

Data Path : Z:\HPCHEM1\BNA G\DATA\BG110716\  
 Data File : BG024746.D  
 Acq On : 8 Nov 2016 2:11  
 Operator : UM/SJ  
 Sample : H5543-10  
 Misc :  
 ALS Vial : 16 Sample Multiplier: 1

Instrument :  
 BNA\_G  
 ClientSampleId :  
 SB-113-16.5-17.0

Quant Time: Nov 08 02:50:33 2016  
 Quant Method : Z:\HPCHEM1\BNA G\METHODS\8270-BG102516.M  
 Quant Title : ASP BNA STANDARDS FOR 5 POINT CALIBRATION  
 QLast Update : Wed Oct 26 11:14:13 2016  
 Response via : Initial Calibration

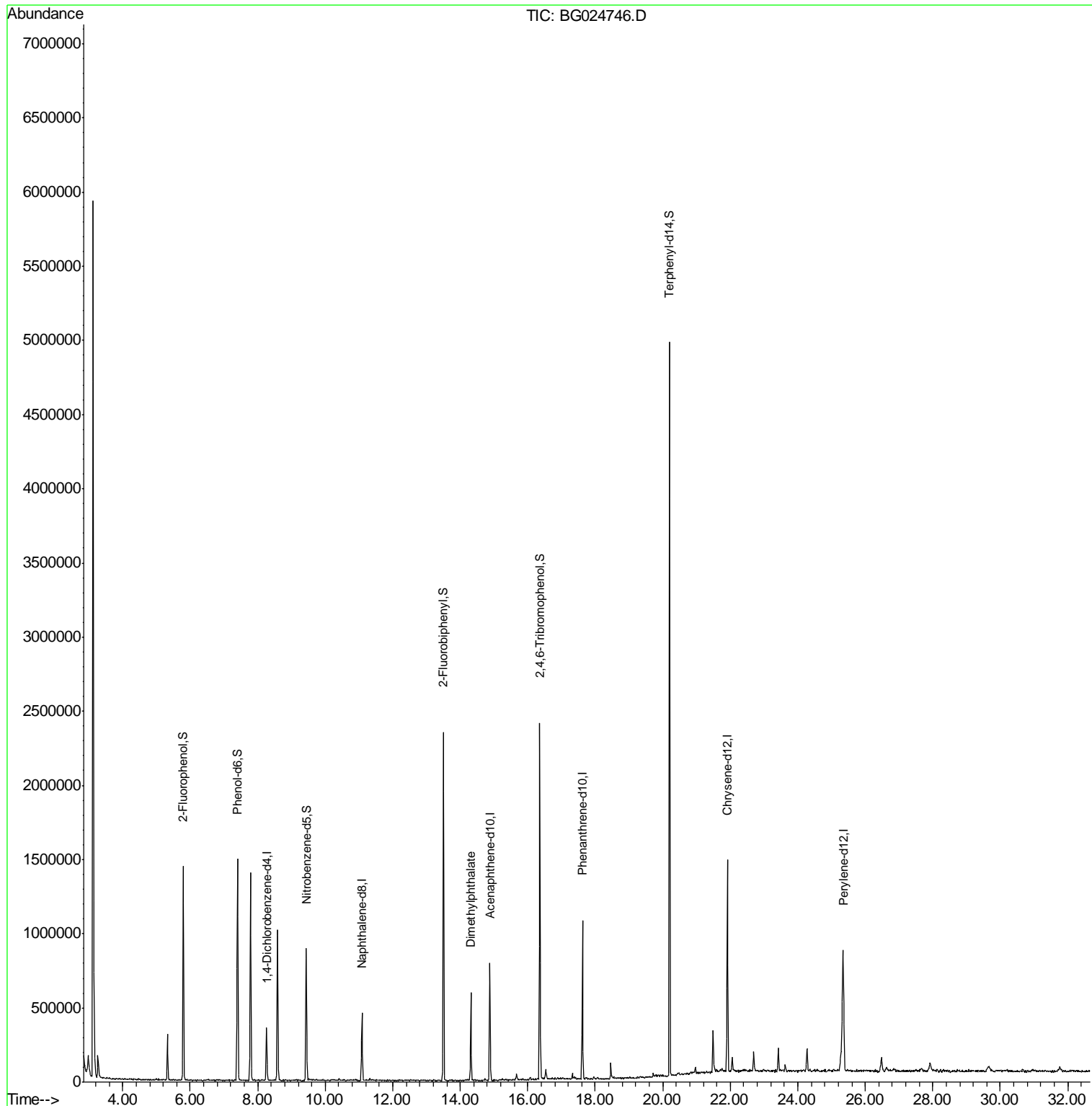
Internal Standards	R.T.	QIon	Response	Conc	Units	Dev(Min)
1) 1,4-Dichlorobenzene-d4	8.26	152	93905	20.00	ng	0.00
21) Naphthalene-d8	11.09	136	363435	20.00	ng	-0.02
38) Acenaphthene-d10	14.88	164	289419	20.00	ng	-0.02
63) Phenanthrene-d10	17.62	188	661489	20.00	ng	0.00
75) Chrysene-d12	21.91	240	982178	20.00	ng	-0.02
86) Perylene-d12	25.34	264	1043255	20.00	ng	-0.03
System Monitoring Compounds						
5) 2-Fluorophenol	5.79	112	569775	99.45	ng	0.00
7) Phenol-d6	7.40	99	824537	104.91	ng	0.00
23) Nitrobenzene-d5	9.44	82	557290	69.81	ng	-0.02
41) 2,4,6-Tribromophenol	16.36	330	494473	114.36	ng	0.00
44) 2-Fluorobiphenyl	13.50	172	1176114	67.54	ng	-0.02
78) Terphenyl-d14	20.20	244	2077783	63.21	ng	-0.02
Target Compounds						Qvalue
49) Dimethylphthalate	14.31	163	370880	18.05	ng	97

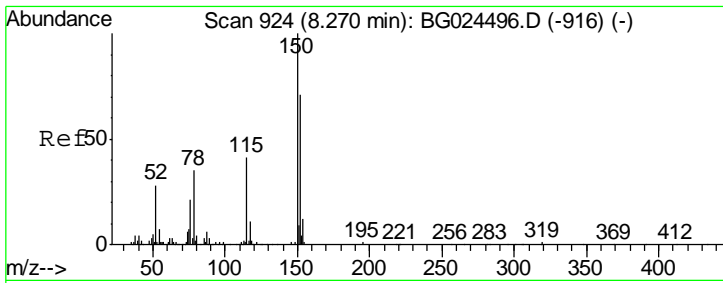
(#) = qualifier out of range (m) = manual integration (+) = signals summed

Data Path : Z:\HPCHEM1\BNA G\DATA\BG110716\  
 Data File : BG024746.D  
 Acq On : 8 Nov 2016 2:11  
 Operator : UM/SJ  
 Sample : H5543-10  
 Misc :  
 ALS Vial : 16 Sample Multiplier: 1

Instrument :  
 BNA\_G  
 ClientSampleId :  
 SB-113-16.5-17.0

Quant Time: Nov 08 02:50:33 2016  
 Quant Method : Z:\HPCHEM1\BNA G\METHODS\8270-BG102516.M  
 Quant Title : ASP BNA STANDARDS FOR 5 POINT CALIBRATION  
 QLast Update : Wed Oct 26 11:14:13 2016  
 Response via : Initial Calibration

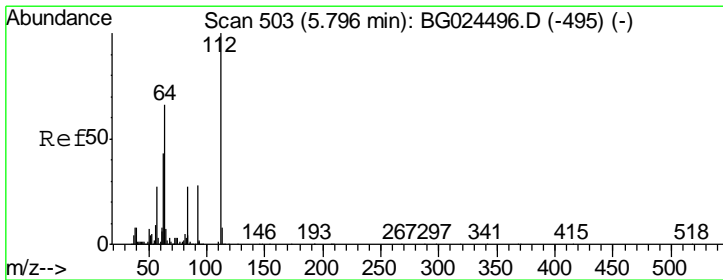
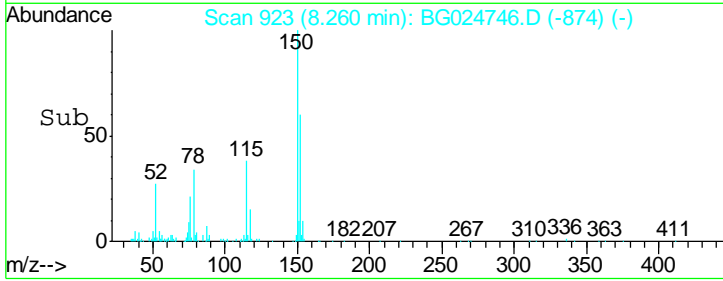
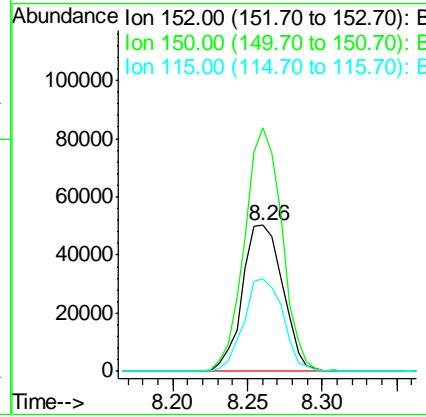
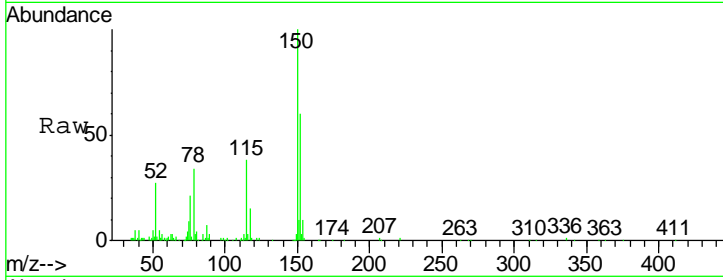




#1  
 1,4-Dichlorobenzene-d4  
 Concen: 20.00 ng  
 RT: 8.26 min Scan# 923  
 Delta R.T. -0.01 min  
 Lab File: BG024746.D  
 Acq: 8 Nov 2016 2:11

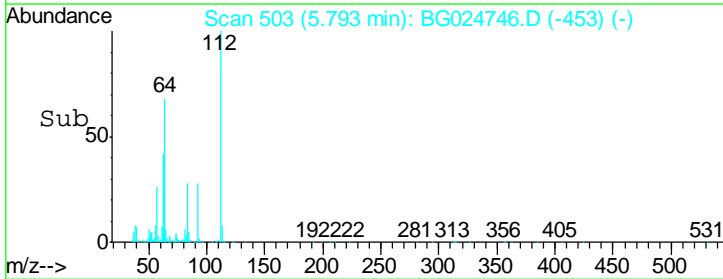
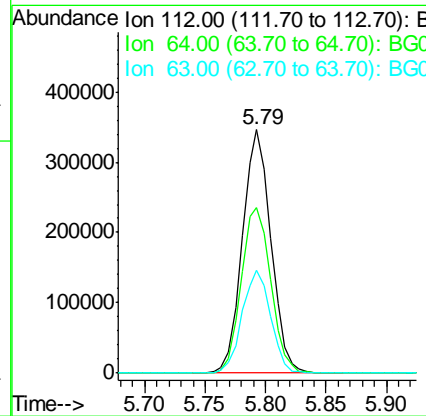
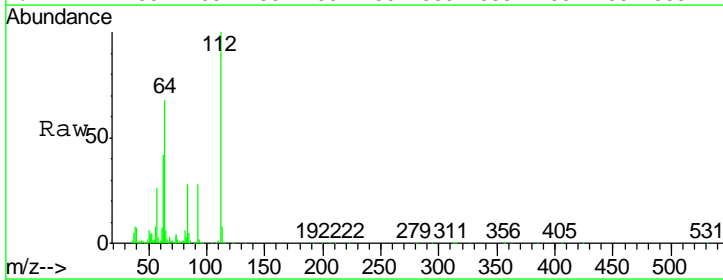
**Instrument :**  
 BNA\_G  
**ClientSampleId :**  
 SB-113-16.5-17.0

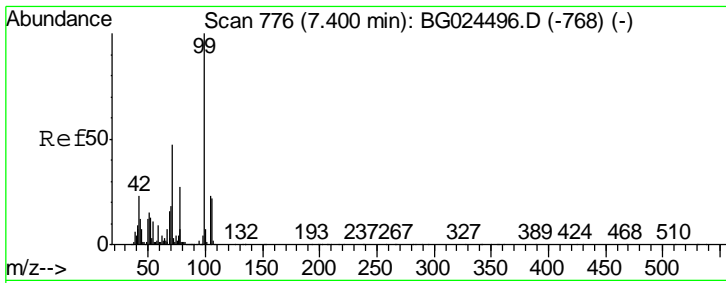
Tgt Ion	Resp	Lower	Upper
152	93905		
150	166.7	114.0	171.0
115	63.5	48.1	72.1



#5  
 2-Fluorophenol  
 Concen: 99.45 ng  
 RT: 5.79 min Scan# 503  
 Delta R.T. -0.00 min  
 Lab File: BG024746.D  
 Acq: 8 Nov 2016 2:11

Tgt Ion	Resp	Lower	Upper
112	569775		
64	67.9	61.8	92.6
63	42.3	37.2	55.8

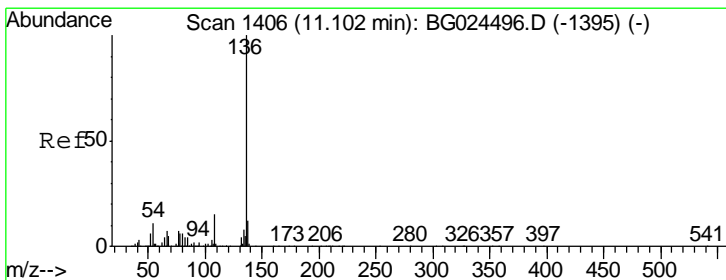
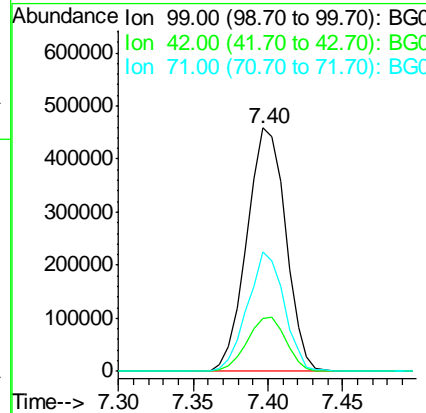
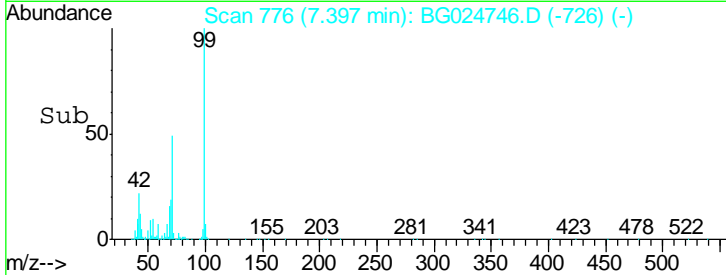
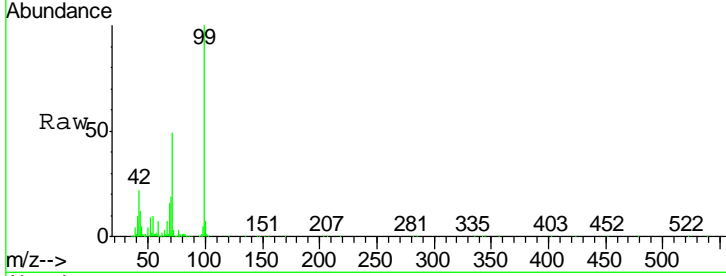




#7  
 Phenol-d6  
 Concen: 104.91 ng  
 RT: 7.40 min Scan# 776  
 Delta R.T. -0.00 min  
 Lab File: BG024746.D  
 Acq: 8 Nov 2016 2:11

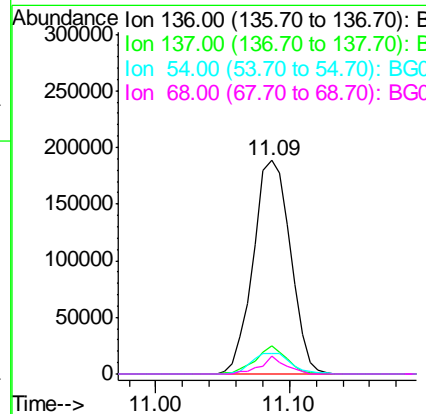
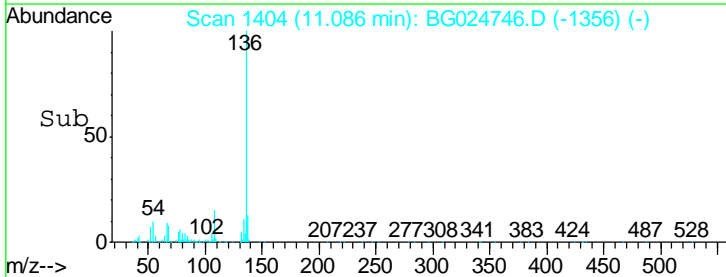
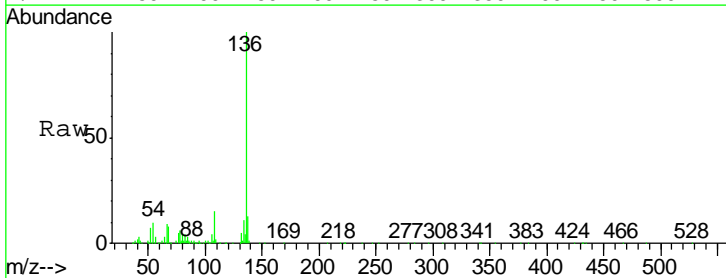
Instrument :  
 BNA\_G  
 ClientSampleId :  
 SB-113-16.5-17.0

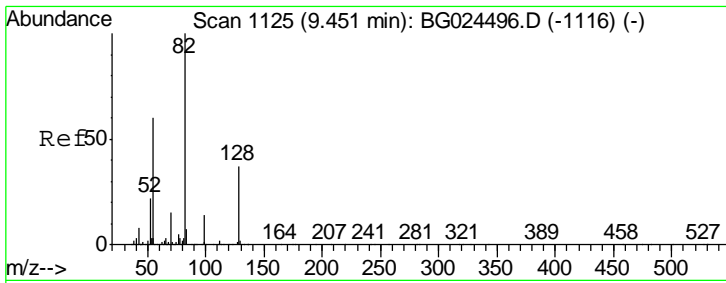
Tgt Ion	Resp	Lower	Upper
99	100		
42	22.0	20.5	30.7
71	49.1	37.6	56.4



#21  
 Naphthalene-d8  
 Concen: 20.00 ng  
 RT: 11.09 min Scan# 1404  
 Delta R.T. -0.02 min  
 Lab File: BG024746.D  
 Acq: 8 Nov 2016 2:11

Tgt Ion	Resp	Lower	Upper
136	100		
137	13.1	8.9	13.3
54	9.7	9.3	13.9
68	8.2	5.1	7.7#

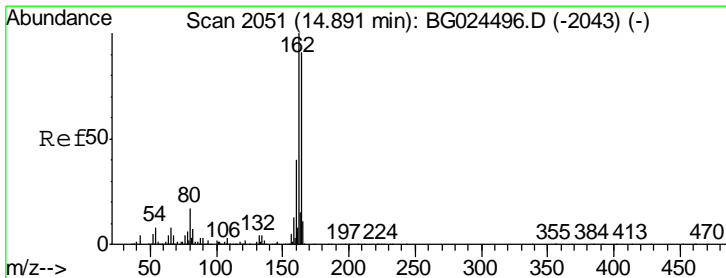
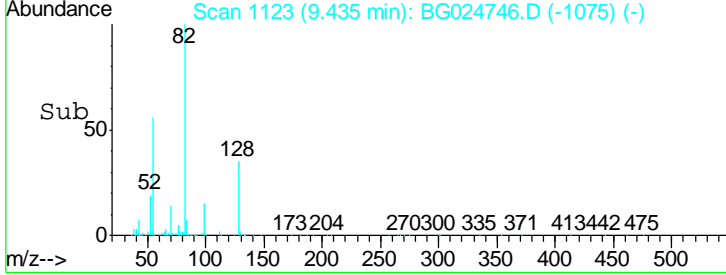
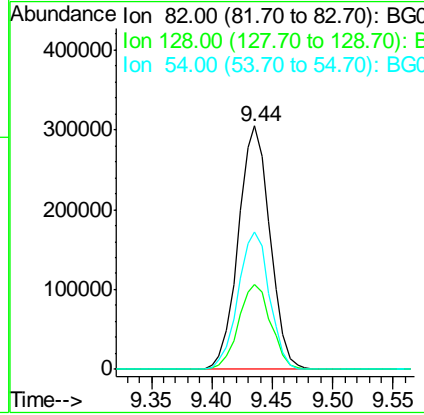
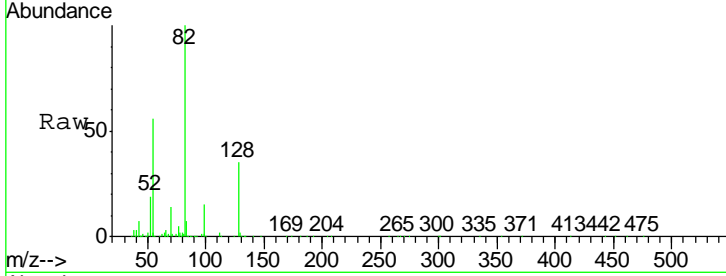




#23  
 Nitrobenzene-d5  
 Concen: 69.81 ng  
 RT: 9.44 min Scan# 1123  
 Delta R.T. -0.02 min  
 Lab File: BG024746.D  
 Acq: 8 Nov 2016 2:11

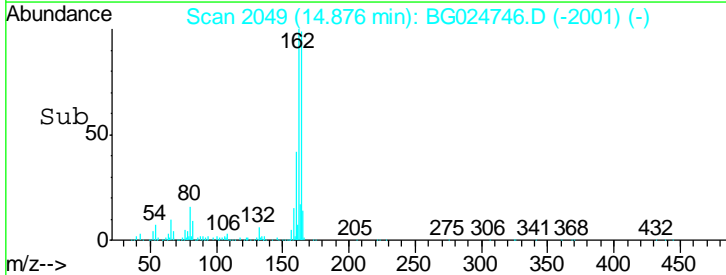
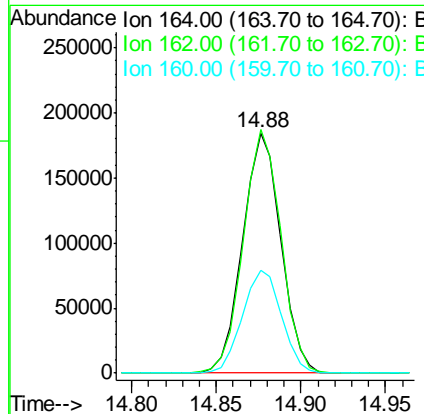
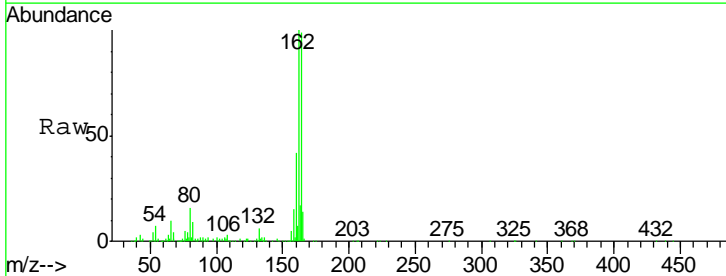
Instrument :  
 BNA\_G  
 ClientSampleId :  
 SB-113-16.5-17.0

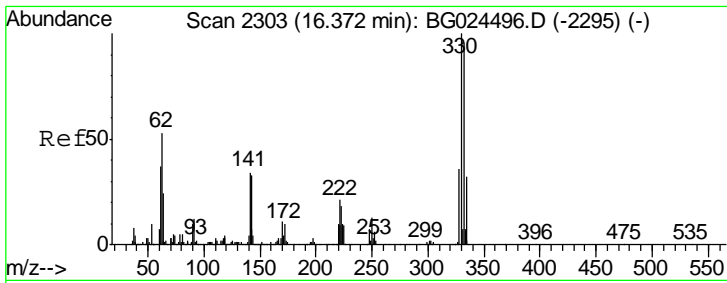
Tgt Ion	Resp	Lower	Upper
82	557290		
128	34.6	26.4	39.6
54	56.3	49.4	74.2



#38  
 Acenaphthene-d10  
 Concen: 20.00 ng  
 RT: 14.88 min Scan# 2049  
 Delta R.T. -0.02 min  
 Lab File: BG024746.D  
 Acq: 8 Nov 2016 2:11

Tgt Ion	Resp	Lower	Upper
164	289419		
162	101.3	85.1	127.7
160	42.8	34.7	52.1

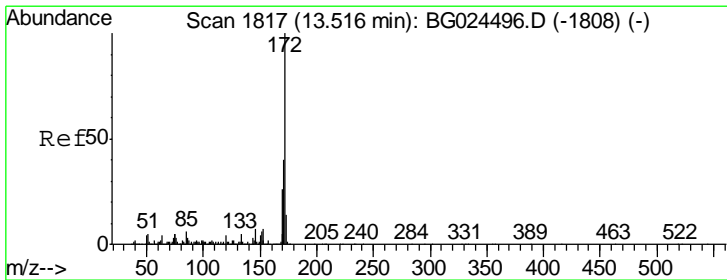
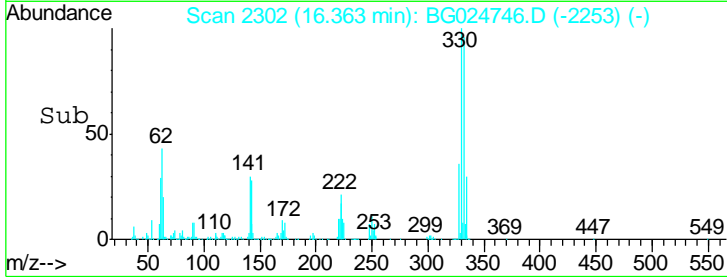
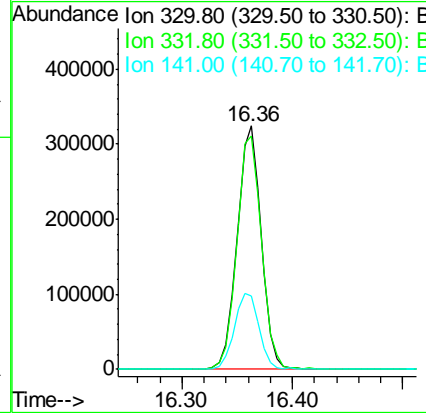
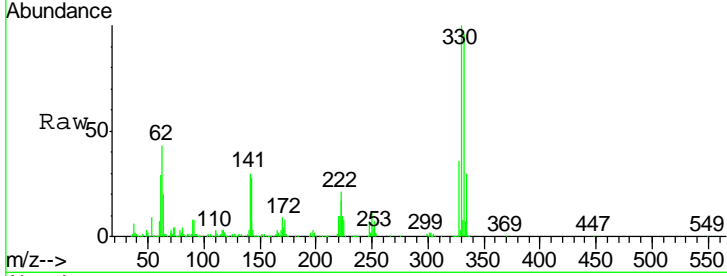




#41  
 2,4,6-Tribromophenol  
 Concen: 114.36 ng  
 RT: 16.36 min Scan# 2302  
 Delta R.T. -0.01 min  
 Lab File: BG024746.D  
 Acq: 8 Nov 2016 2:11

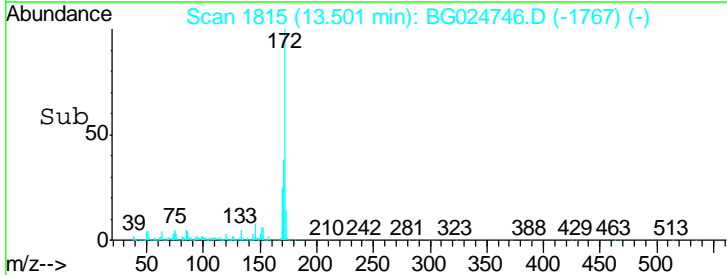
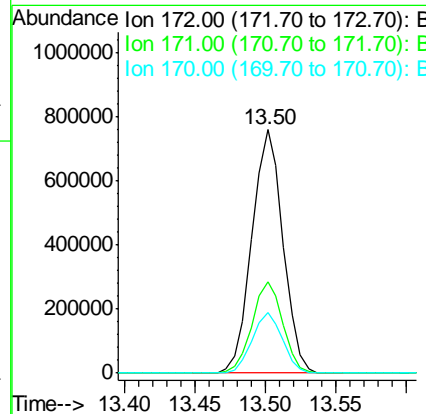
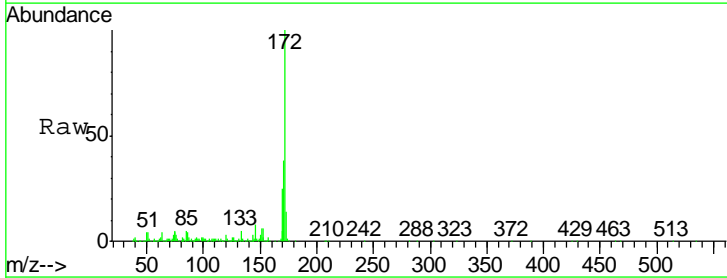
Instrument :  
 BNA\_G  
 ClientSampleId :  
 SB-113-16.5-17.0

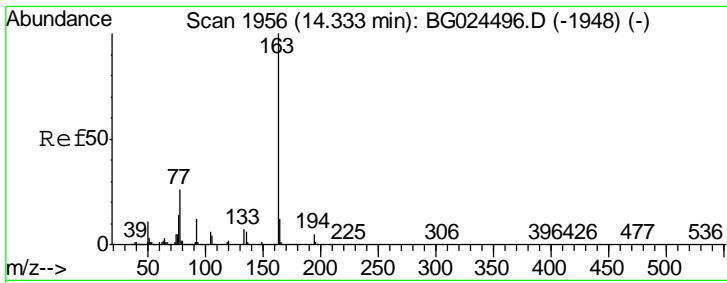
Tgt Ion	Resp	Lower	Upper
330	494473		
332	98.4	77.3	115.9
141	32.2	32.1	48.1



#44  
 2-Fluorobiphenyl  
 Concen: 67.54 ng  
 RT: 13.50 min Scan# 1815  
 Delta R.T. -0.02 min  
 Lab File: BG024746.D  
 Acq: 8 Nov 2016 2:11

Tgt Ion	Resp	Lower	Upper
172	1176114		
171	37.7	32.2	48.2
170	25.1	21.8	32.6

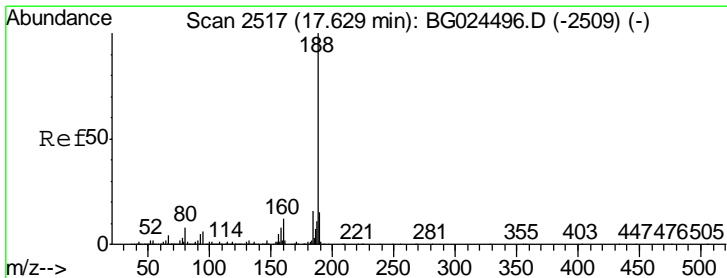
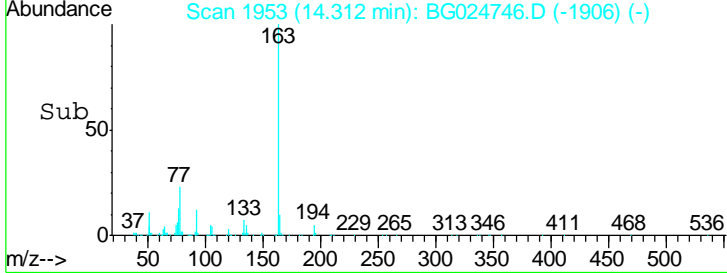
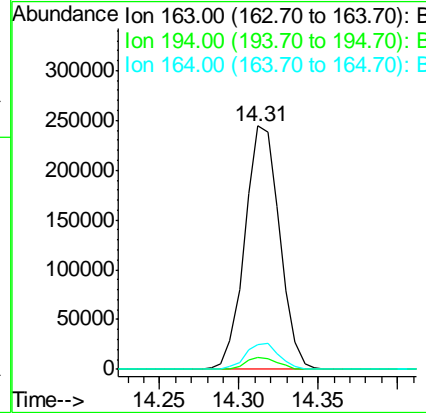
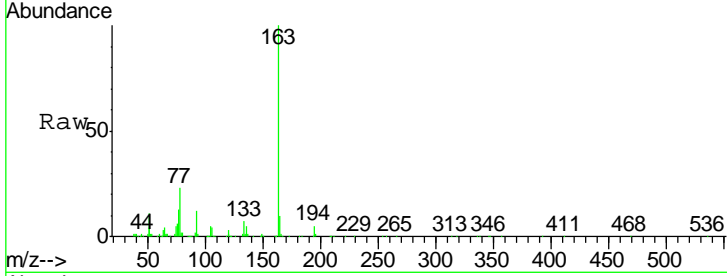




#49  
 Dimethylphthalate  
 Concen: 18.05 ng  
 RT: 14.31 min Scan# 1953  
 Delta R.T. -0.02 min  
 Lab File: BG024746.D  
 Acq: 8 Nov 2016 2:11

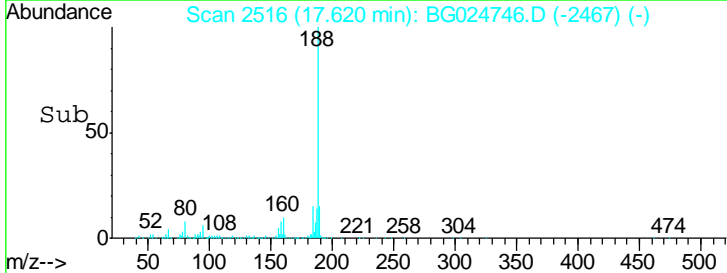
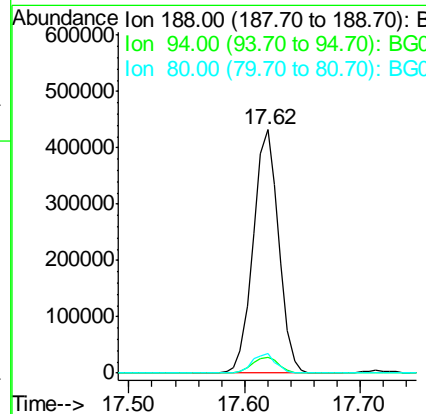
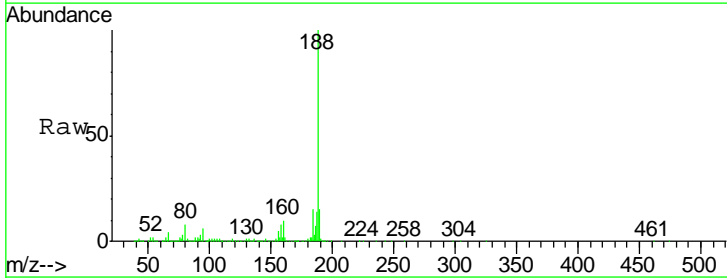
Instrument :  
 BNA\_G  
 ClientSampleId :  
 SB-113-16.5-17.0

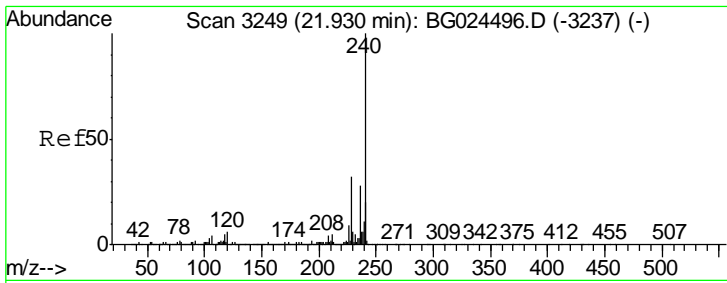
Tgt Ion	Resp	Lower	Upper
163	370880		
194	4.8	3.8	5.6
164	10.1	9.3	13.9



#63  
 Phenanthrene-d10  
 Concen: 20.00 ng  
 RT: 17.62 min Scan# 2516  
 Delta R.T. -0.01 min  
 Lab File: BG024746.D  
 Acq: 8 Nov 2016 2:11

Tgt Ion	Resp	Lower	Upper
188	661489		
94	6.4	5.8	8.8
80	7.9	7.5	11.3

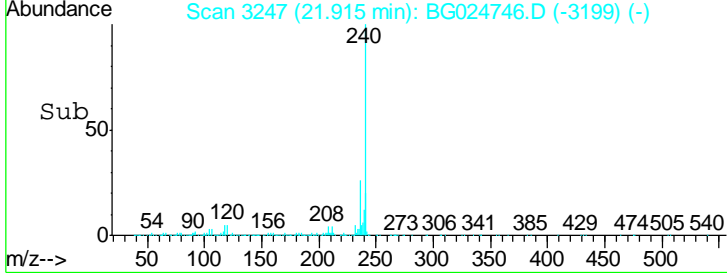
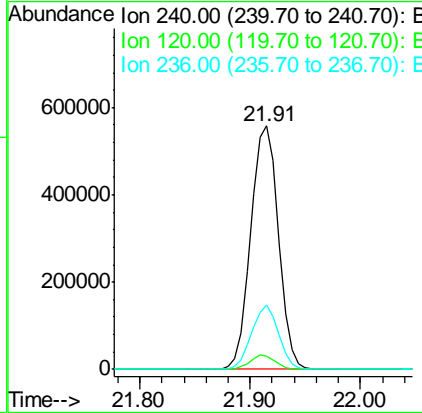
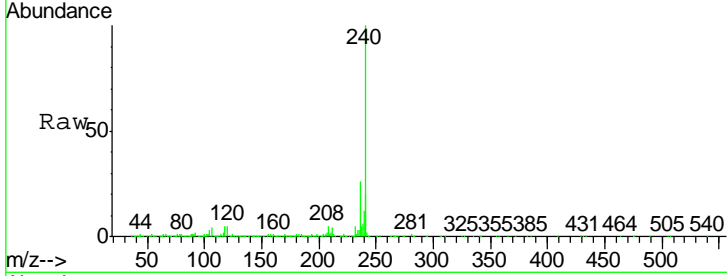




#75  
 Chrysene-d12  
 Concen: 20.00 ng  
 RT: 21.91 min Scan# 3247  
 Delta R.T. -0.02 min  
 Lab File: BG024746.D  
 Acq: 8 Nov 2016 2:11

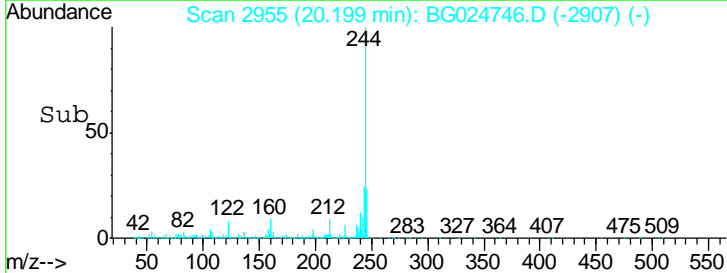
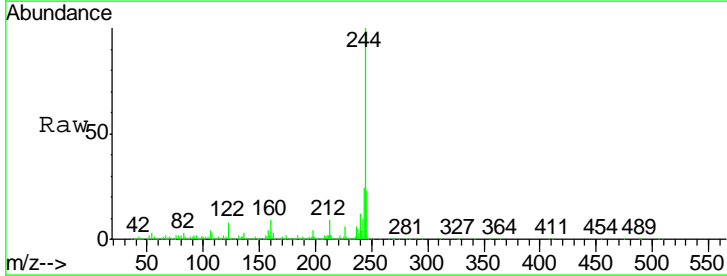
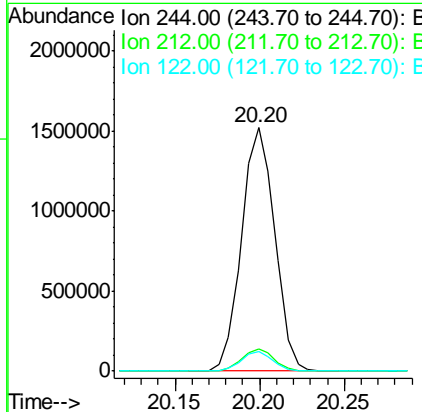
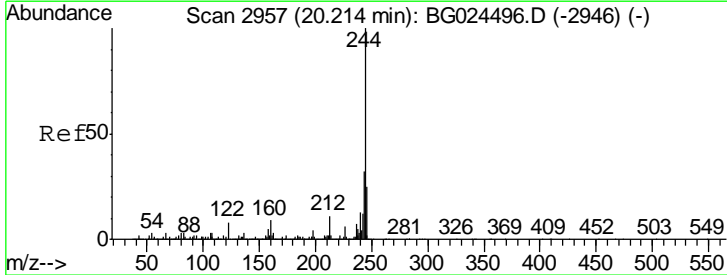
Instrument :  
 BNA\_G  
 ClientSampled :  
 SB-113-16.5-17.0

Tgt Ion	Resp	Lower	Upper
240	100		
120	5.2	5.7	8.5#
236	26.5	22.2	33.4

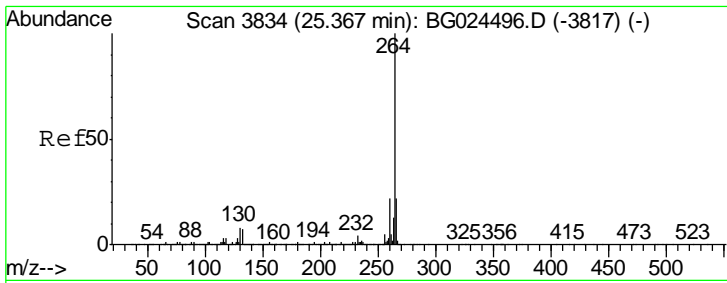


#78  
 Terphenyl-d14  
 Concen: 63.21 ng  
 RT: 20.20 min Scan# 2955  
 Delta R.T. -0.02 min  
 Lab File: BG024746.D  
 Acq: 8 Nov 2016 2:11

Tgt Ion	Resp	Lower	Upper
244	100		
212	9.4	10.0	15.0#
122	7.9	8.6	12.8#







#86  
 Perylene-d12  
 Concen: 20.00 ng  
 RT: 25.34 min Scan# 3830  
 Delta R.T. -0.03 min  
 Lab File: BG024746.D  
 Acq: 8 Nov 2016 2:11

Instrument :  
 BNA\_G  
 ClientSampled :  
 SB-113-16.5-17.0

Tot Ion: 264 Resp: 1043255

Ion	Ratio	Lower	Upper
264	100		
260	23.9	21.8	32.8
265	22.1	18.2	27.4

