

Data Path : Z:\svoasrv\HPCHEM1\BNA\_G\Data\BG110824\  
 Data File : BG063240.D  
 Acq On : 8 Nov 2024 22:25  
 Operator : RC/JU  
 Sample : P4627-12  
 Misc :  
 ALS Vial : 16 Sample Multiplier: 1

Instrument :  
 BNA\_G  
 ClientSampleId :  
 COCD1

Integration Parameters: LSCINT.P

Integrator: RTE  
 Smoothing : OFF Filtering: 5  
 Sampling : 1 Min Area: 0.1 % of largest Peak  
 Start Thrs: 0.2 Max Peaks: 100  
 Stop Thrs : 0 Peak Location: TOP

If leading or trailing edge < 100 prefer < Baseline drop else tangent >  
 Peak separation: 5

Method : Z:\svoasrv\HPCHEM1\BNA\_G\Methods\SFAM-EPA-BG110624.MA.M  
 Title : SVOA CALIBRATION

Signal : TIC: BG063240.D\data.ms

peak #	R.T. min	first scan	max scan	last scan	PK TY	peak height	corr. area	corr. % max.	% of total
1	3.305	32	37	40	rBV5	18397	30343	0.57%	0.066%
2	3.434	57	59	62	rBV3	6433	7577	0.14%	0.017%
3	3.711	101	106	115	rBV	100918	178751	3.39%	0.390%
4	3.963	147	149	153	rVB3	4860	7670	0.15%	0.017%
5	4.040	158	162	167	rVB2	6737	13645	0.26%	0.030%
6	4.298	204	206	211	rVB5	4566	7585	0.14%	0.017%
7	4.733	277	280	285	rBV5	4733	8230	0.16%	0.018%
8	4.956	316	318	322	rVB4	9100	9772	0.19%	0.021%
9	5.238	362	366	368	rVB2	5445	8593	0.16%	0.019%
10	7.013	661	668	677	rBV	169243	304996	5.78%	0.666%
11	7.165	685	694	703	rBV	372138	596575	11.30%	1.303%
12	7.371	721	729	736	rBV	443442	733463	13.90%	1.602%
13	7.835	801	808	815	rBV2	415060	678785	12.86%	1.483%
14	8.540	919	928	937	rBV	494673	846507	16.04%	1.849%
15	8.987	996	1004	1016	rBV	515285	911778	17.28%	1.992%
16	9.375	1065	1070	1071	rBV4	5302	8549	0.16%	0.019%
17	9.709	1117	1127	1134	rBV	517105	896063	16.98%	1.957%
18	10.250	1209	1219	1229	rBV	753077	1337033	25.34%	2.921%
19	10.397	1241	1244	1246	rBV3	9022	10290	0.19%	0.022%
20	10.626	1274	1283	1291	rBV	656394	1117122	21.17%	2.440%
21	10.761	1298	1306	1318	rBV	574474	1052037	19.94%	2.298%
22	11.449	1418	1423	1424	rBV5	10079	10625	0.20%	0.023%
23	12.218	1549	1554	1557	rBV6	11206	16946	0.32%	0.037%
24	12.477	1594	1598	1600	rVB2	5429	7375	0.14%	0.016%
25	13.440	1759	1762	1765	rVB2	6217	7874	0.15%	0.017%
26	13.881	1829	1837	1843	rBV	1630541	2364111	44.80%	5.164%
27	13.928	1843	1845	1849	rVV3	9835	14119	0.27%	0.031%
28	13.987	1849	1855	1856	rVV3	6446	11455	0.22%	0.025%
29	14.163	1872	1885	1894	rVV	1655859	2602134	49.31%	5.684%
30	14.474	1929	1938	1945	rBV	1171799	1820753	34.50%	3.977%
31	14.686	1968	1974	1984	rBV	124972	231932	4.40%	0.507%
32	14.774	1987	1989	1993	rVV3	6560	7910	0.15%	0.017%
33	14.903	2006	2011	2018	rVB7	11887	22883	0.43%	0.050%
34	15.273	2071	2074	2075	rBV2	7796	7171	0.14%	0.016%
35	15.467	2099	2107	2114	rBV	2431901	3637458	68.93%	7.946%
36	15.514	2114	2115	2119	rVB3	18521	16914	0.32%	0.037%

Data Path : Z:\svoasrv\HPCHEM1\BNA\_G\Data\BG110824\  
 Data File : BG063240.D  
 Acq On : 8 Nov 2024 22:25  
 Operator : RC/JU  
 Sample : P4627-12  
 Misc :  
 ALS Vial : 16 Sample Multiplier: 1

Instrument :  
 BNA\_G  
 ClientSampleId :  
 COCD1

Integration Parameters: LSCINT.P

Integrator: RTE  
 Smoothing : OFF Filtering: 5  
 Sampling : 1 Min Area: 0.1 % of largest Peak  
 Start Thrs: 0.2 Max Peaks: 100  
 Stop Thrs : 0 Peak Location: TOP

If leading or trailing edge < 100 prefer < Baseline drop else tangent >  
 Peak separation: 5

Method : Z:\svoasrv\HPCHEM1\BNA\_G\Methods\SFAM-EPA-BG110624.MA.M  
 Title : SVOA CALIBRATION

37	15.591	2121	2128	2138	rBV	847311	1260465	23.89%	2.753%
38	15.714	2144	2149	2151	rBV5	9410	12414	0.24%	0.027%
39	16.167	2220	2226	2233	rBV5	12635	27267	0.52%	0.060%
40	16.249	2236	2240	2245	rVB3	8253	16759	0.32%	0.037%
41	16.372	2256	2261	2265	rBV5	5667	10212	0.19%	0.022%
42	17.224	2398	2406	2413	rBV	1697864	2450220	46.43%	5.352%
43	17.324	2416	2423	2431	rBV	2985495	4375036	82.91%	9.557%
44	17.512	2451	2455	2459	rVB	9747	14223	0.27%	0.031%
45	17.583	2462	2467	2476	rBV	135435	220071	4.17%	0.481%
46	17.888	2514	2519	2524	rVB6	13746	18146	0.34%	0.040%
47	17.994	2534	2537	2539	rBV4	6885	7208	0.14%	0.016%
48	18.070	2549	2550	2555	rVB5	6319	7319	0.14%	0.016%
49	18.123	2555	2559	2566	rBV8	24216	49934	0.95%	0.109%
50	18.194	2568	2571	2573	rVB	17506	17247	0.33%	0.038%
51	18.552	2630	2632	2637	rVB5	7206	9562	0.18%	0.021%
52	18.734	2661	2663	2666	rVV3	10564	9244	0.18%	0.020%
53	18.764	2666	2668	2671	rVB4	7664	7711	0.15%	0.017%
54	18.840	2679	2681	2685	rBV5	8013	9443	0.18%	0.021%
55	19.051	2716	2717	2720	rVV3	7923	7327	0.14%	0.016%
56	19.187	2733	2740	2745	rBV2	49702	80780	1.53%	0.176%
57	19.257	2747	2752	2758	rBV	46571	80096	1.52%	0.175%
58	19.498	2788	2793	2798	rBV	183197	289983	5.50%	0.633%
59	19.621	2808	2814	2823	rBV	3739888	5277163	100.00%	11.528%
60	19.686	2823	2825	2827	rVB3	10574	8317	0.16%	0.018%
61	19.709	2827	2829	2834	rVB6	10056	11613	0.22%	0.025%
62	19.921	2861	2865	2866	rBV4	7434	7501	0.14%	0.016%
63	19.968	2871	2873	2875	rBV3	8468	8372	0.16%	0.018%
64	20.050	2883	2887	2890	rBV5	6377	12525	0.24%	0.027%
65	20.227	2915	2917	2919	rBV3	9023	10167	0.19%	0.022%
66	20.285	2924	2927	2930	rBV5	9840	9557	0.18%	0.021%
67	20.538	2968	2970	2972	rBV3	13320	14404	0.27%	0.031%
68	20.597	2978	2980	2981	rBV2	11604	7793	0.15%	0.017%
69	20.861	3021	3025	3027	rBV5	21916	27889	0.53%	0.061%
70	20.908	3031	3033	3036	rBV4	10499	15026	0.28%	0.033%
71	20.990	3044	3047	3054	rVB2	63744	102422	1.94%	0.224%
72	21.149	3071	3074	3079	rVB6	35140	42202	0.80%	0.092%
73	21.478	3123	3130	3140	rBV2	1789897	2835986	53.74%	6.195%
74	21.666	3158	3162	3166	rBV4	40899	63844	1.21%	0.139%
75	22.242	3257	3260	3265	rBV5	41589	49319	0.93%	0.108%
76	22.353	3278	3279	3281	rBV2	11486	8040	0.15%	0.018%

Data Path : Z:\svoasrv\HPCHEM1\BNA\_G\Data\BG110824\  
 Data File : BG063240.D  
 Acq On : 8 Nov 2024 22:25  
 Operator : RC/JU  
 Sample : P4627-12  
 Misc :  
 ALS Vial : 16 Sample Multiplier: 1

Instrument :  
 BNA\_G  
 ClientSampleId :  
 C0CD1

Integration Parameters: LSCINT.P

Integrator: RTE  
 Smoothing : OFF Filtering: 5  
 Sampling : 1 Min Area: 0.1 % of largest Peak  
 Start Thrs: 0.2 Max Peaks: 100  
 Stop Thrs : 0 Peak Location: TOP

If leading or trailing edge < 100 prefer < Baseline drop else tangent >  
 Peak separation: 5

Method : Z:\svoasrv\HPCHEM1\BNA\_G\Methods\SFAM-EPA-BG110624.MA.M  
 Title : SVOA CALIBRATION

77	22.894	3367	3371	3375	rVB6	35772	47853	0.91%	0.105%
78	22.982	3382	3386	3393	rVV6	41318	74674	1.42%	0.163%
79	23.070	3395	3401	3409	rVB	121590	249141	4.72%	0.544%
80	23.317	3441	3443	3444	rBV2	15158	11686	0.22%	0.026%
81	23.593	3488	3490	3492	rBV3	12668	8037	0.15%	0.018%
82	23.611	3492	3493	3495	rBV2	13719	12743	0.24%	0.028%
83	23.640	3495	3498	3504	rVB7	29459	62873	1.19%	0.137%
84	24.304	3599	3611	3625	rBV	1993586	5201523	98.57%	11.362%
85	24.516	3636	3647	3656	rBV	1080474	2861586	54.23%	6.251%
86	25.561	3822	3825	3830	rBV6	20109	34325	0.65%	0.075%
87	26.807	4035	4037	4038	rBV2	22668	14042	0.27%	0.031%
88	27.383	4133	4135	4136	rBV2	15393	12773	0.24%	0.028%
89	27.682	4184	4186	4187	rBV2	12618	10870	0.21%	0.024%
90	28.017	4241	4243	4248	rVB6	12086	10312	0.20%	0.023%
91	28.611	4343	4344	4347	rBV3	11281	11406	0.22%	0.025%
92	28.946	4400	4401	4404	rBV3	10198	9594	0.18%	0.021%
93	29.234	4448	4450	4452	rBV3	11079	9708	0.18%	0.021%
94	29.639	4517	4519	4522	rVB3	14481	13271	0.25%	0.029%
95	30.091	4592	4596	4598	rBV5	15093	22995	0.44%	0.050%
96	30.902	4733	4734	4738	rVB4	16183	13378	0.25%	0.029%
97	31.173	4778	4780	4783	rBV4	11018	11661	0.22%	0.025%
98	31.272	4795	4797	4799	rBV3	12259	10881	0.21%	0.024%
99	31.402	4817	4819	4822	rVB4	16407	12933	0.25%	0.028%
100	31.637	4858	4859	4861	rBV2	14007	12258	0.23%	0.027%

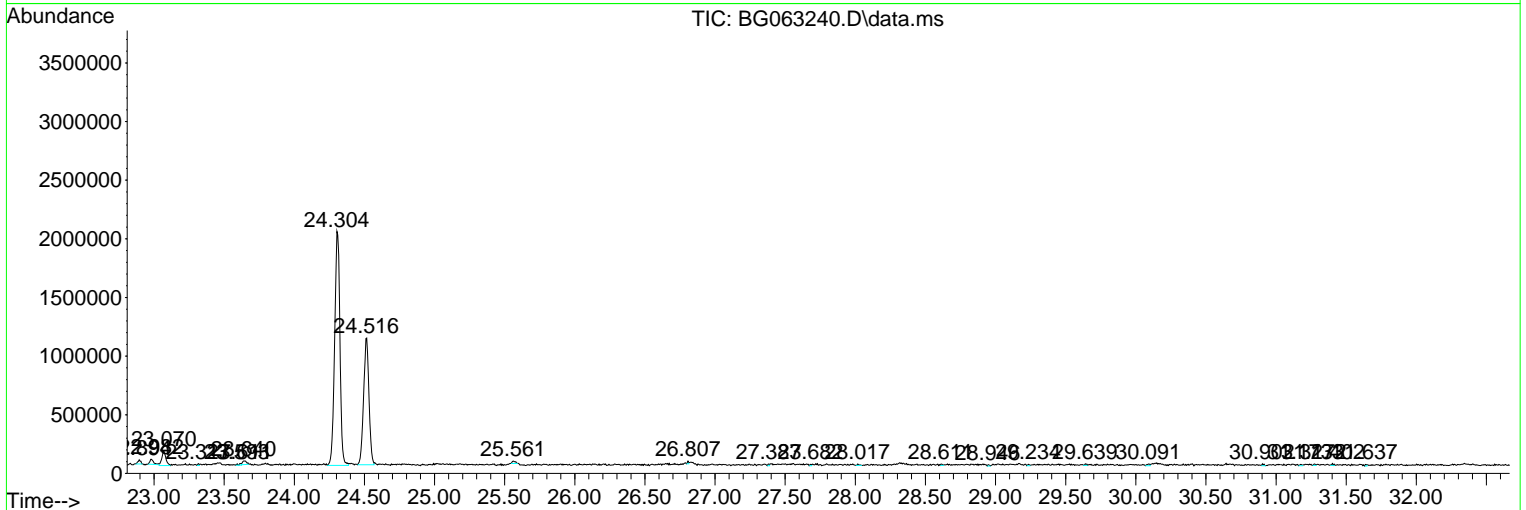
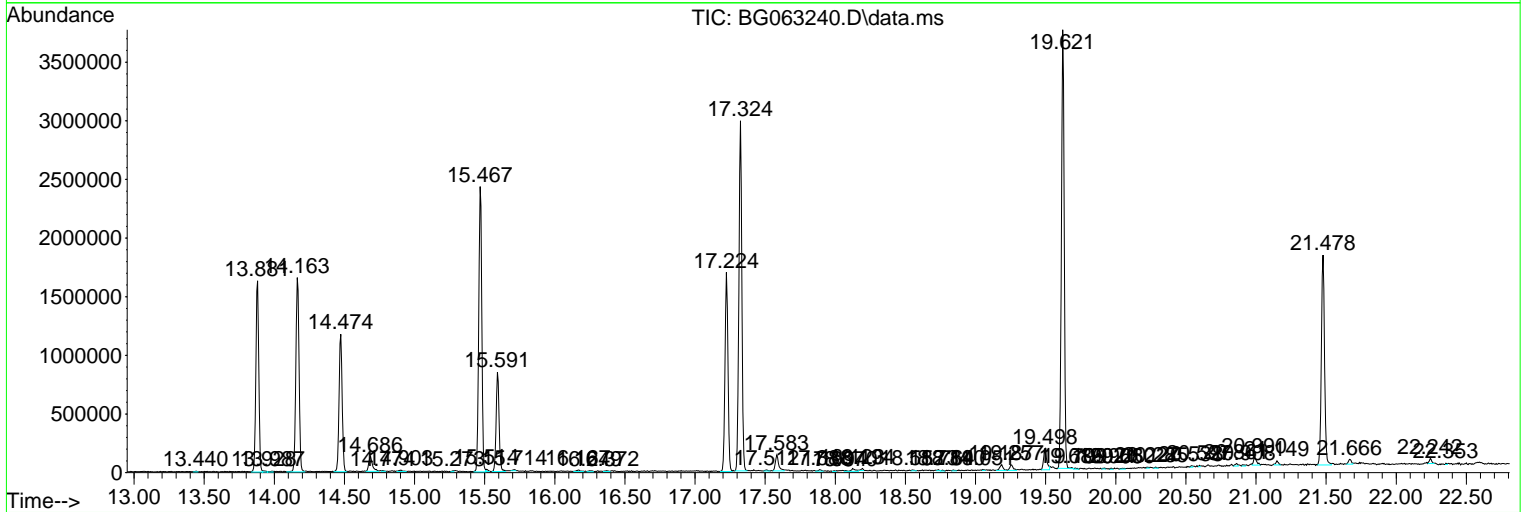
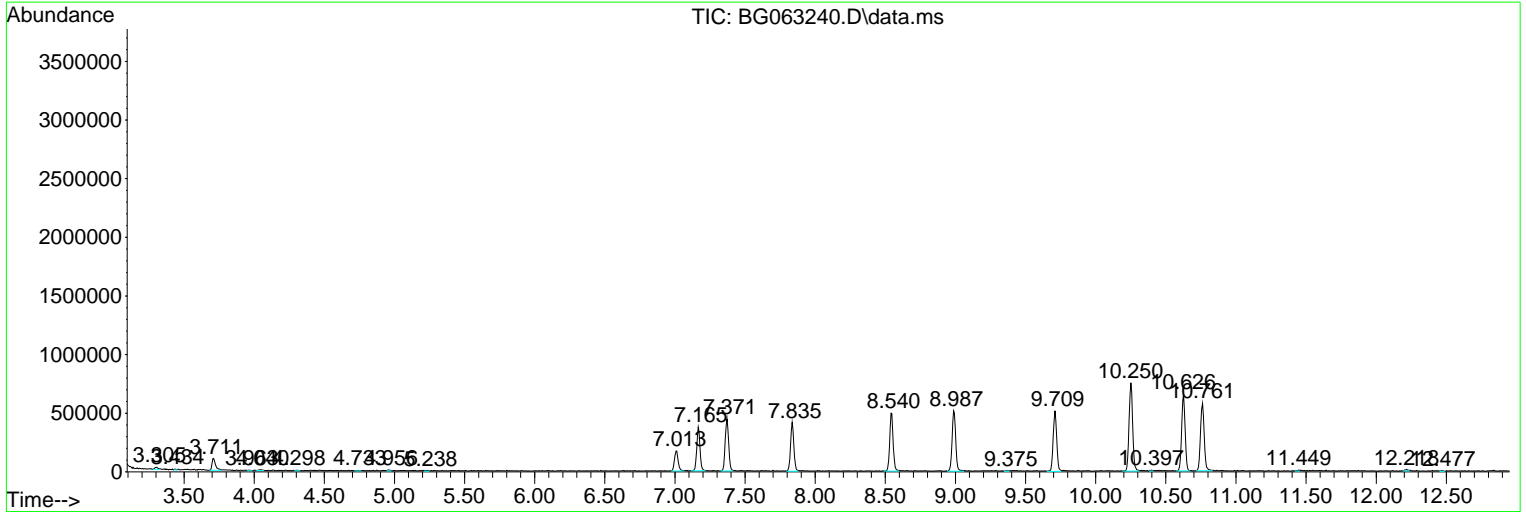
Sum of corrected areas: 45778354

Data Path : Z:\svoasrv\HPCHEM1\BNA\_G\Data\BG110824\  
 Data File : BG063240.D  
 Acq On : 8 Nov 2024 22:25  
 Operator : RC/JU  
 Sample : P4627-12  
 Misc :  
 ALS Vial : 16 Sample Multiplier: 1

Instrument :  
 BNA\_G  
 ClientSampleId :  
 C0CD1

Quant Method : Z:\svoasrv\HPCHEM1\BNA\_G\Methods\SFAM-EPA-BG110624.MA.M  
 Quant Title : SVOA CALIBRATION

TIC Library : C:\DATABASE\NIST20.L  
 TIC Integration Parameters: LSCINT.P



Data Path : Z:\svoasrv\HPCHEM1\BNA\_G\Data\BG110824\  
 Data File : BG063240.D  
 Acq On : 8 Nov 2024 22:25  
 Operator : RC/JU  
 Sample : P4627-12  
 Misc :  
 ALS Vial : 16 Sample Multiplier: 1

Instrument :  
 BNA\_G  
 ClientSampleId :  
 C0CD1

Quant Method : Z:\svoasrv\HPCHEM1\BNA\_G\Methods\SFAM-EPA-BG110624.MA.M  
 Quant Title : SVOA CALIBRATION

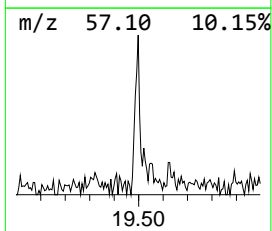
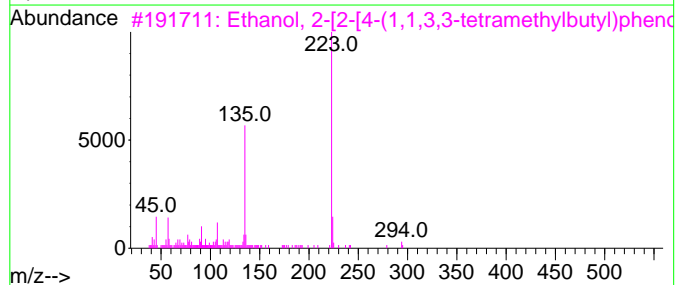
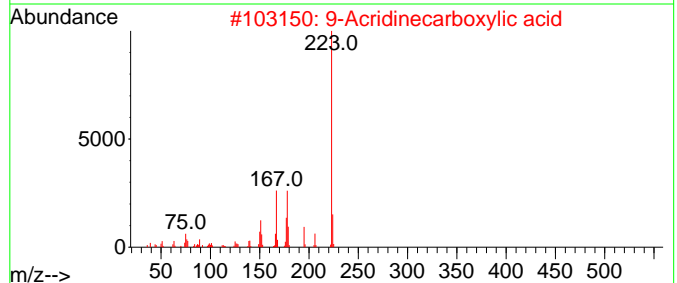
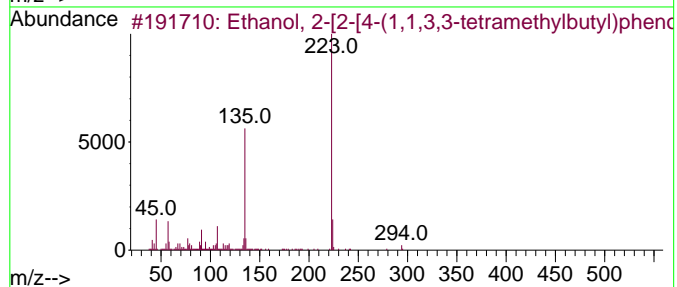
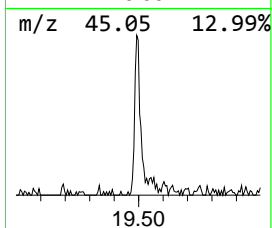
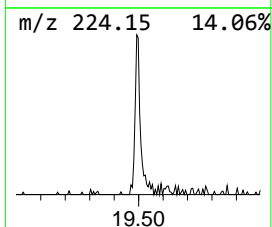
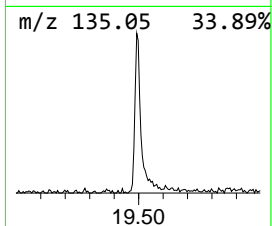
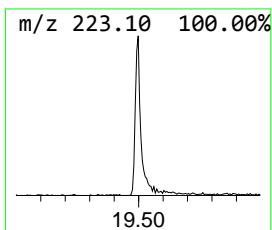
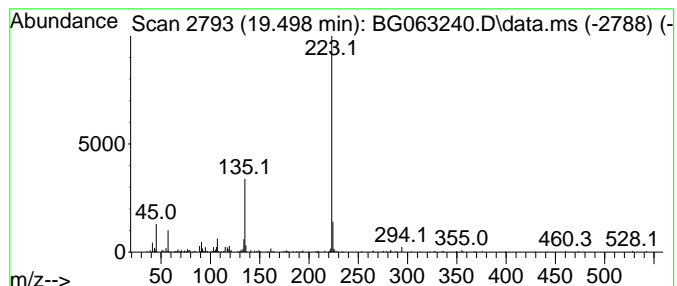
TIC Library : C:\DATABASE\NIST20.L  
 TIC Integration Parameters: LSCINT.P

\*\*\*\*\*  
 Peak Number 1 Ethanol, 2-[2-[4-(1,1,3,3-t... Concentration Rank 1

R.T.	EstConc	Area	Relative to ISTD	R.T.
19.498	2.05 ng/ul	289983	Chrysene-d12	21.478

Hit#	of 5	Tentative ID	MW	MolForm	CAS#	Qual
1		Ethanol, 2-[2-[4-(1,1,3,3-tetram...	294	C18H30O3	002315-61-9	87
2		9-Acridinecarboxylic acid	223	C14H9NO2	005336-90-3	53
3		Ethanol, 2-[2-[4-(1,1,3,3-tetram...	294	C18H30O3	002315-61-9	49
4		5-Methyl-2-(4-methylphenyl)-1,3-...	223	C15H13NO	016155-94-5	42
5		9-Acridinecarboxylic acid	223	C14H9NO2	005336-90-3	42



Data Path : Z:\svoasrv\HPCHEM1\BNA\_G\Data\BG110824\  
Data File : BG063240.D  
Acq On : 8 Nov 2024 22:25  
Operator : RC/JU  
Sample : P4627-12  
Misc :  
ALS Vial : 16 Sample Multiplier: 1

Instrument :  
BNA\_G  
ClientSampleId :  
C0CD1

Quant Method : Z:\svoasrv\HPCHEM1\BNA\_G\Methods\SFAM-EPA-BG110624.MA.M  
Quant Title : SVOA CALIBRATION

TIC Library : C:\DATABASE\NIST20.L  
TIC Integration Parameters: LSCINT.P

TIC Top Hit name	RT	EstConc	Units	Response	--Internal Standard--			
					#	RT	Resp	Conc
Ethanol, 2-[2-[...	19.498	2.0	ng/u1	289983	5	21.478	2835990	20.0