

Data Path : \\74.0.250.170\SVOASRV\HPCHEM1\BNA G\DATA\BG111117\
 Data File : BG030935.D
 Acq On : 11 Nov 2017 9:37
 Operator : SJ/JU
 Sample : I6413-01
 Misc :
 ALS Vial : 20 Sample Multiplier: 1

Instrument :
 BNA_G
 ClientSampleId :

Quant Time: Nov 13 03:19:04 2017
 Quant Method : Z:\HPCHEM1\BNA G\METHODS\8270-BG111017.M
 Quant Title : ASP BNA STANDARDS FOR 5 POINT CALIBRATION
 QLast Update : Fri Nov 10 15:38:25 2017
 Response via : Initial Calibration

Internal Standards	R.T.	QIon	Response	Conc	Units	Dev(Min)
1) 1,4-Dichlorobenzene-d4	8.14	152	41004	20.00	ng	-0.01
21) Naphthalene-d8	10.96	136	179342	20.00	ng	-0.01
38) Acenaphthene-d10	14.76	164	133625	20.00	ng	-0.01
63) Phenanthrene-d10	17.50	188	351138	20.00	ng	-0.01
75) Chrysene-d12	21.77	240	414555	20.00	ng	-0.01
86) Perylene-d12	25.08	264	418615	20.00	ng	-0.01

System Monitoring Compounds	R.T.	QIon	Response	Conc	Units	Dev(Min)
5) 2-Fluorophenol	5.70	112	40723	17.03	ng	0.00
7) Phenol-d6	7.31	99	35008	10.87	ng	0.00
23) Nitrobenzene-d5	9.30	82	114828	37.94	ng	-0.02
41) 2,4,6-Tribromophenol	16.24	330	76542	35.41	ng	-0.01
44) 2-Fluorobiphenyl	13.38	172	364202	39.16	ng	-0.02
78) Terphenyl-d14	20.09	244	715689	38.12	ng	0.00

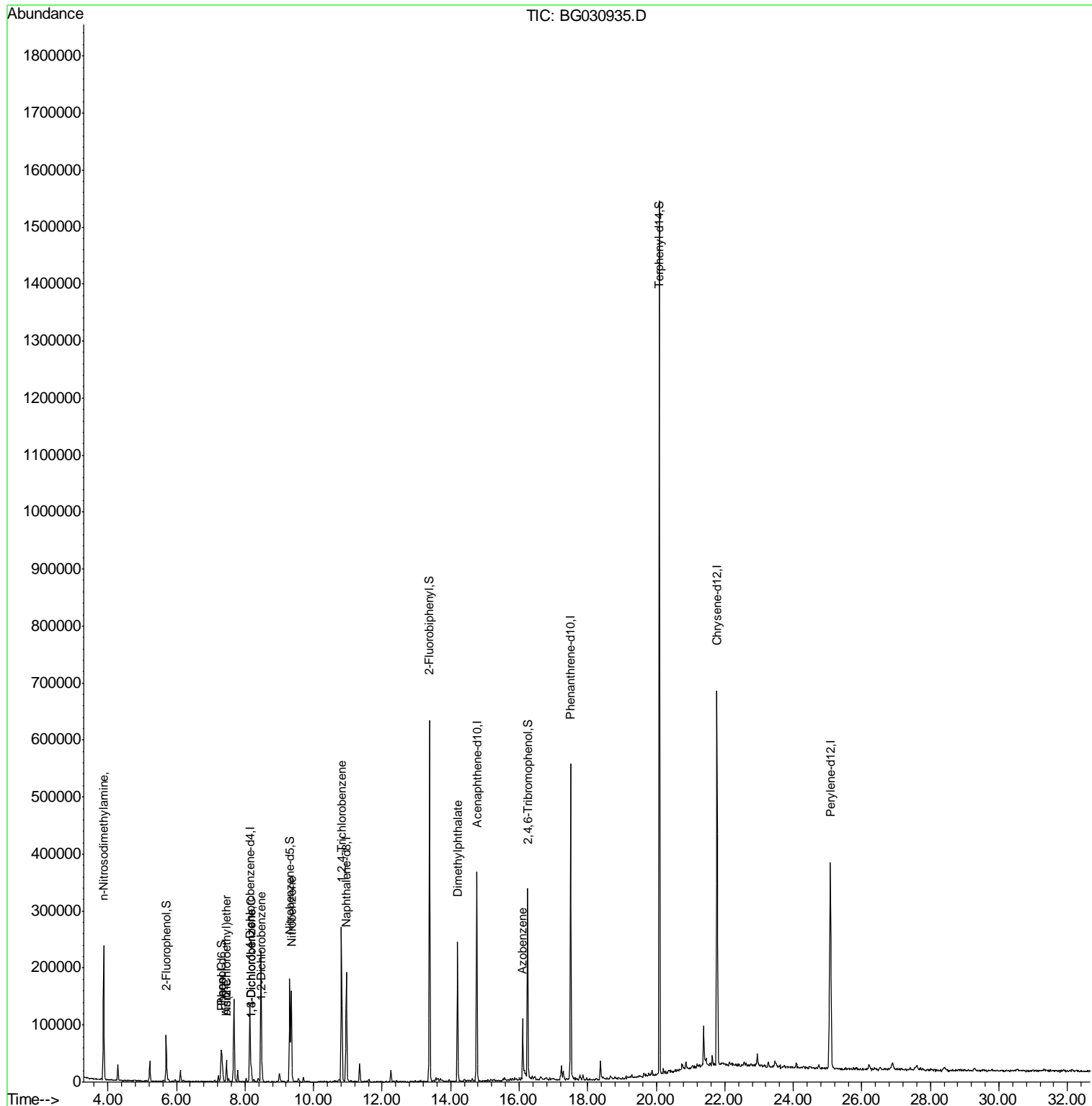
Target Compounds	R.T.	QIon	Response	Conc	Units	Qvalue
4) n-Nitrosodimethylamine	3.87	42	9494	7.111	ng	# 3
6) Aniline	7.46	93	25497	6.014	ng	99
10) Phenol	7.33	94	23794	7.112	ng	96
11) bis(2-Chloroethyl)ether	7.46	93	25497	9.545	ng	# 20
12) 1,3-Dichlorobenzene	8.18	146	13219	4.270	ng	92
13) 1,4-Dichlorobenzene	8.18	146	13219	4.213	ng	89
14) 1,2-Dichlorobenzene	8.49	146	7252	2.408	ng	94
24) Nitrobenzene	9.35	77	98944	32.004	ng	92
30) 1,2,4-Trichlorobenzene	10.82	180	109963	32.060	ng	98
49) Dimethylphthalate	14.21	163	187614	16.238	ng	98
62) Azobenzene	16.10	77	29805	3.330	ng	# 1

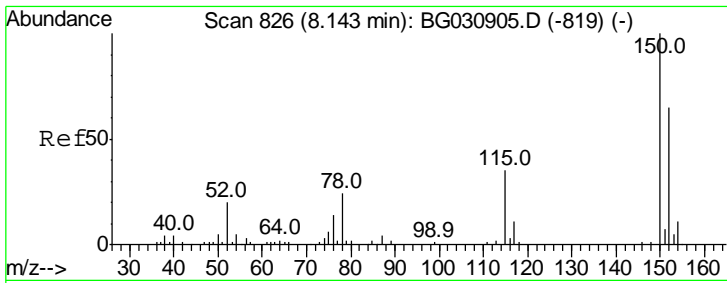
(#) = qualifier out of range (m) = manual integration (+) = signals summed

Data Path : \\74.0.250.170\SVOASRV\HPCHEM1\BNA G\DATA\BG111117\
 Data File : BG030935.D
 Acq On : 11 Nov 2017 9:37
 Operator : SJ/JU
 Sample : I6413-01
 Misc :
 ALS Vial : 20 Sample Multiplier: 1

Instrument :
 BNA_G
 ClientSampled :

Quant Time: Nov 13 03:19:04 2017
 Quant Method : Z:\HPCHEM1\BNA G\METHODS\8270-BG111017.M
 Quant Title : ASP BNA STANDARDS FOR 5 POINT CALIBRATION
 QLast Update : Fri Nov 10 15:38:25 2017
 Response via : Initial Calibration



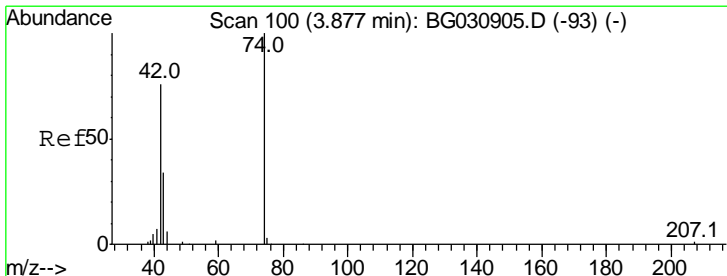
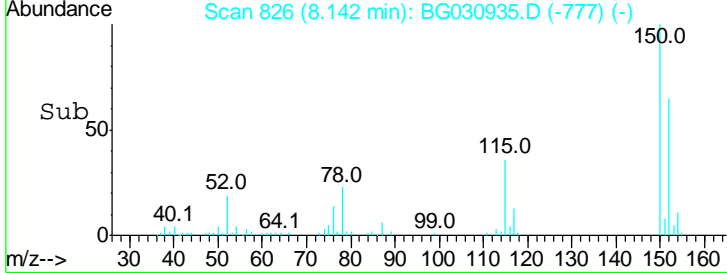
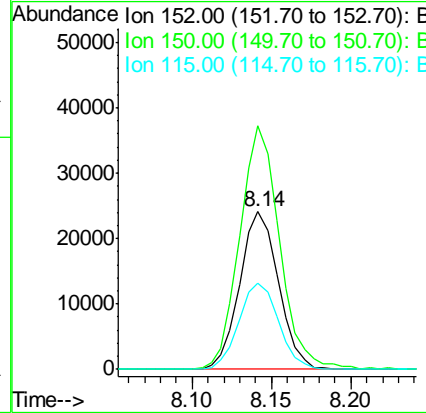
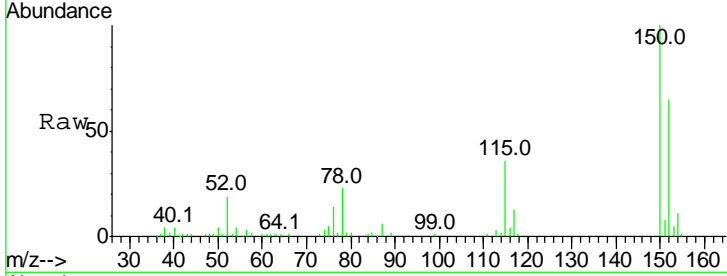


#1
 1,4-Dichlorobenzene-d4
 Concen: 20.000 ng
 RT: 8.14 min Scan# 826
 Delta R.T. -0.01 min
 Lab File: BG030935.D
 Acq: 11 Nov 2017 9:37

Instrument :
 BNA_G
 ClientSampled :

Tgt Ion: 152 Resp: 41004

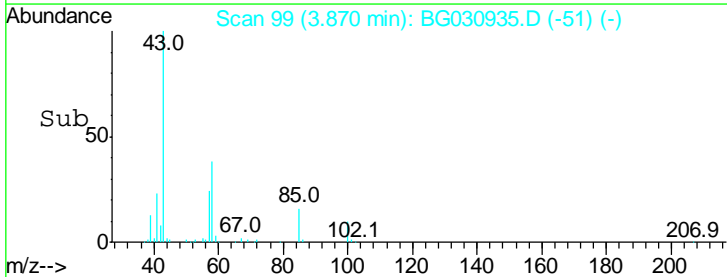
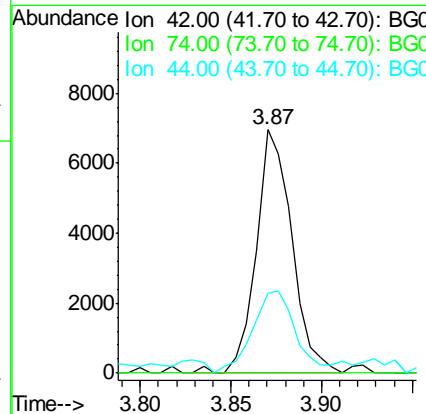
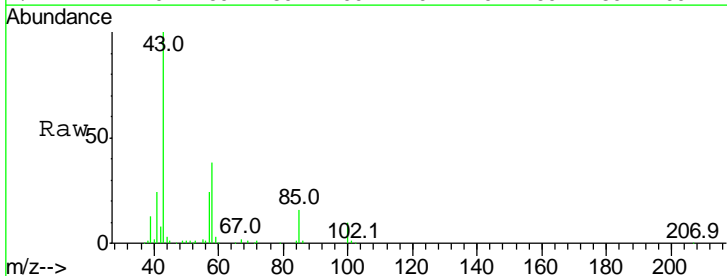
Ion	Ratio	Lower	Upper
152	100		
150	154.4	126.6	189.8
115	54.8	53.0	79.4

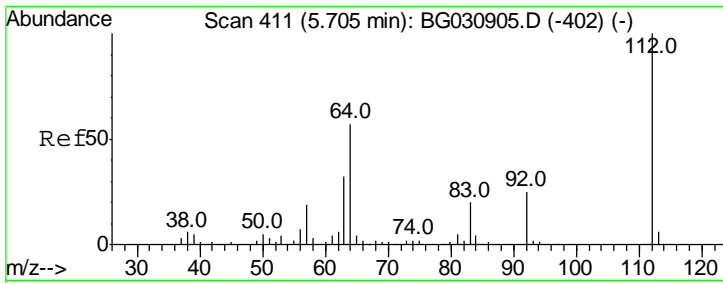


#4
 n-Nitrosodimethylamine
 Concen: 7.111 ng
 RT: 3.87 min Scan# 99
 Delta R.T. -0.02 min
 Lab File: BG030935.D
 Acq: 11 Nov 2017 9:37

Tgt Ion: 42 Resp: 9494

Ion	Ratio	Lower	Upper
42	100		
74	0.0	102.5	153.7#
44	32.9	18.9	28.3#

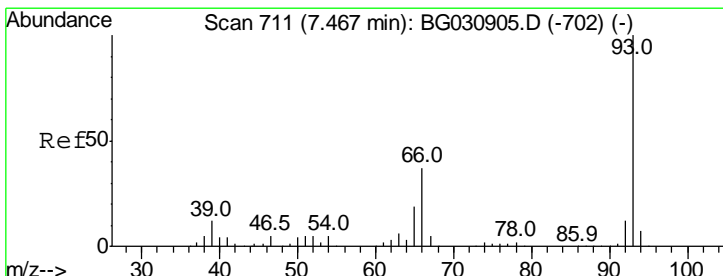
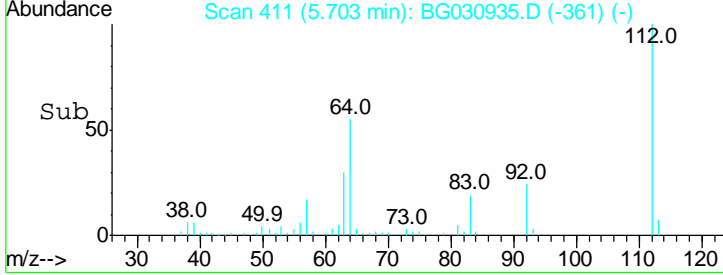
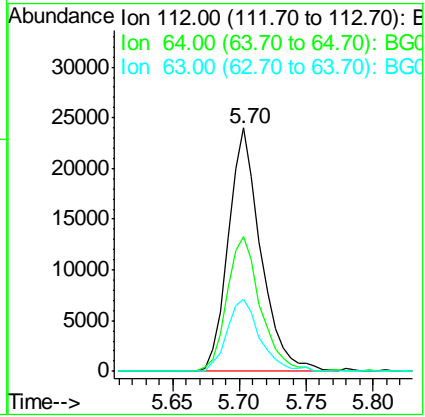
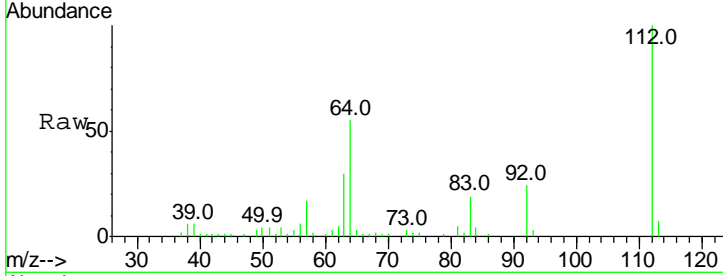




#5
 2-Fluorophenol
 Concen: 17.030 ng
 RT: 5.70 min Scan# 411
 Delta R.T. -0.00 min
 Lab File: BG030935.D
 Acq: 11 Nov 2017 9:37

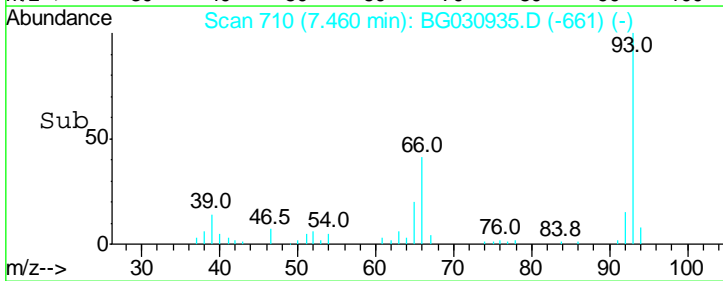
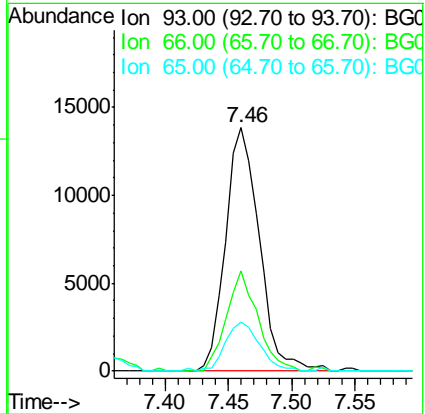
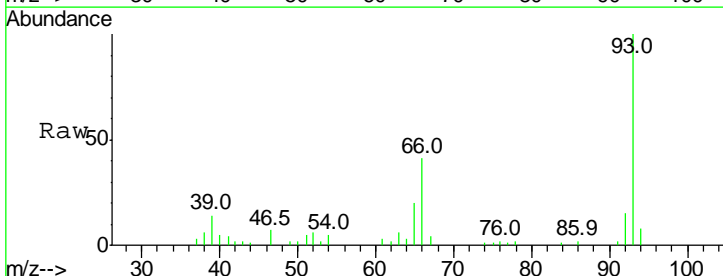
Instrument :
 BNA_G
 ClientSampled :

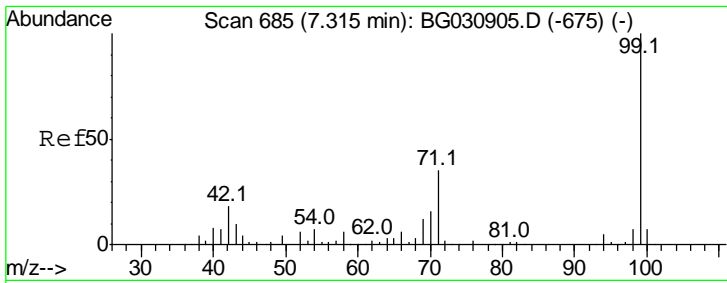
Tgt Ion	Resp	Lower	Upper
112	100		
64	55.3	56.3	84.5#
63	29.7	30.1	45.1#



#6
 Aniline
 Concen: 6.014 ng
 RT: 7.46 min Scan# 710
 Delta R.T. -0.01 min
 Lab File: BG030935.D
 Acq: 11 Nov 2017 9:37

Tgt Ion	Resp	Lower	Upper
93	100		
66	41.1	33.7	50.5
65	20.1	16.1	24.1

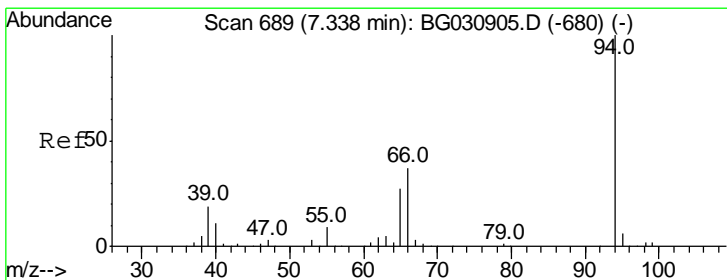
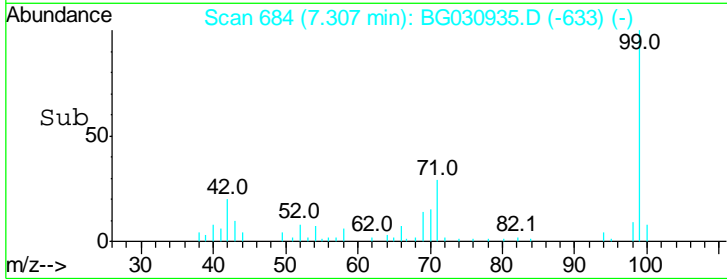
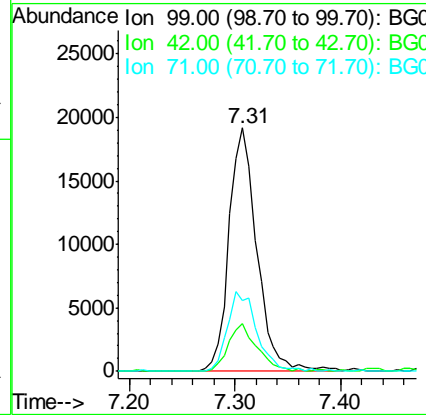
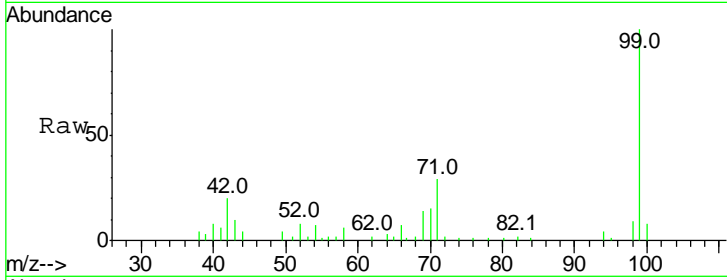




#7
 Phenol-d6
 Concen: 10.867 ng
 RT: 7.31 min Scan# 684
 Delta R.T. 0.00 min
 Lab File: BG030935.D
 Acq: 11 Nov 2017 9:37

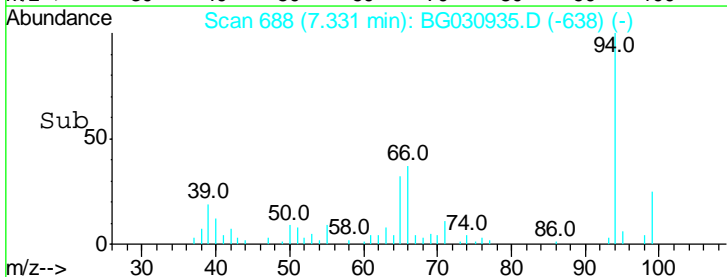
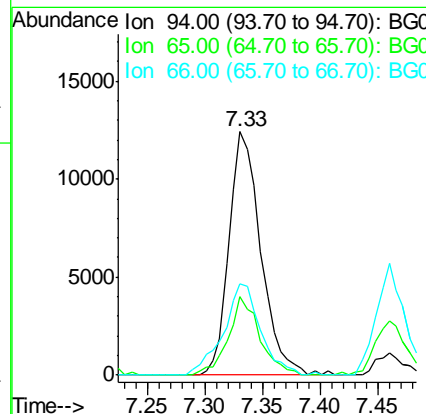
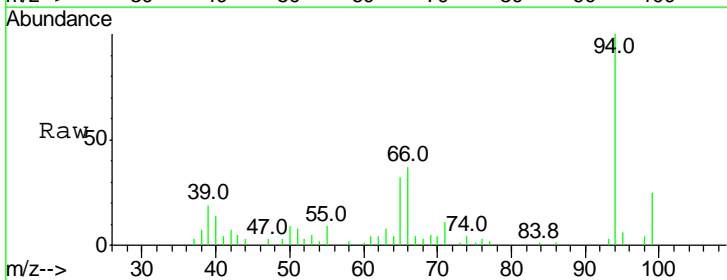
Instrument :
 BNA_G
 ClientSampled :

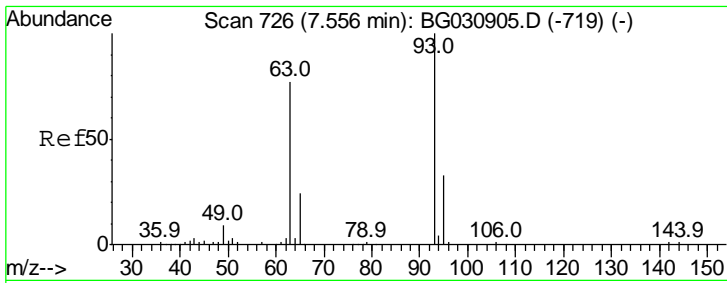
Tgt Ion	Resp	Lower	Upper
99	35008		
99	100		
42	19.7	14.1	21.1
71	29.0	26.1	39.1



#10
 Phenol
 Concen: 7.112 ng
 RT: 7.33 min Scan# 688
 Delta R.T. -0.01 min
 Lab File: BG030935.D
 Acq: 11 Nov 2017 9:37

Tgt Ion	Resp	Lower	Upper
94	23794		
94	100		
65	32.2	11.9	51.9
66	37.5	22.2	62.2

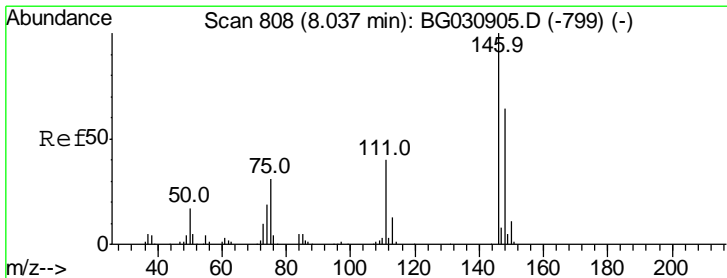
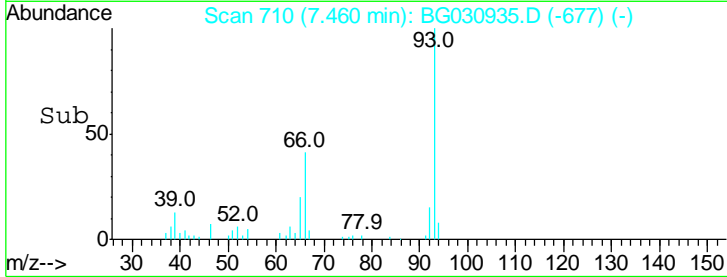
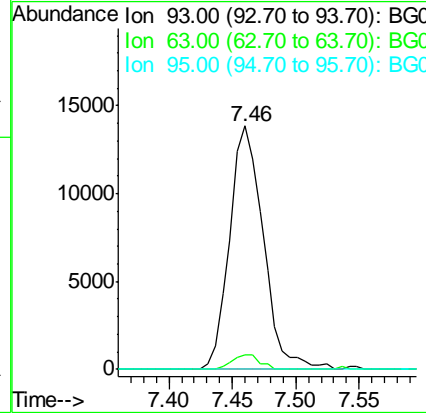
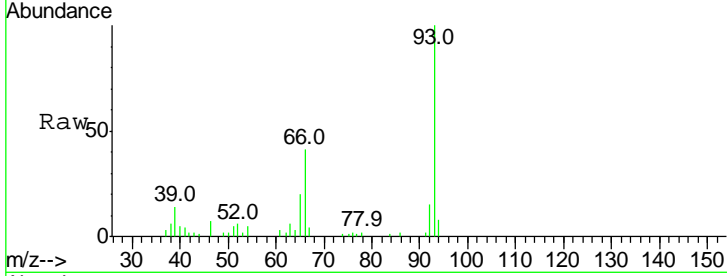




#11
 bis(2-Chloroethyl)ether
 Concen: 9.545 ng
 RT: 7.46 min Scan# 710
 Delta R.T. -0.11 min
 Lab File: BG030935.D
 Acq: 11 Nov 2017 9:37

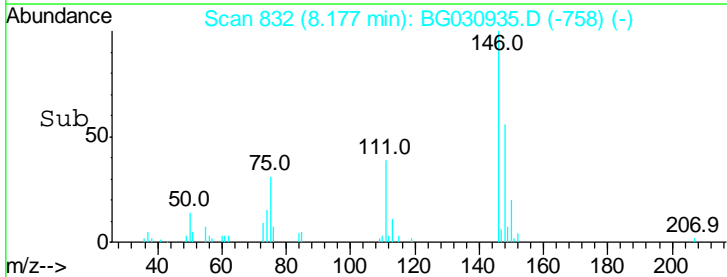
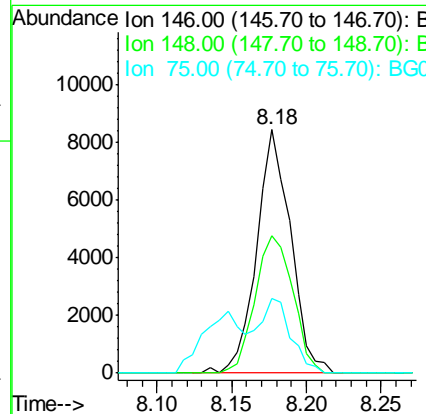
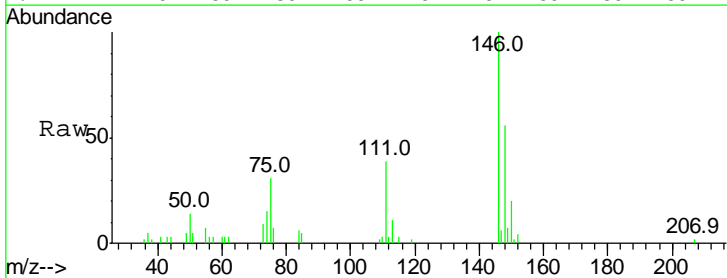
Instrument :
 BNA_G
 ClientSampled :

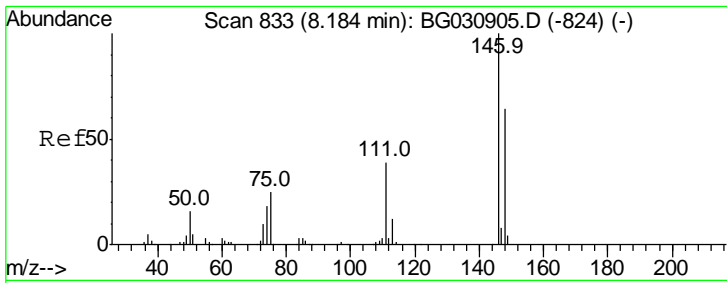
Tgt Ion	Resp	Lower	Upper
93	100		
63	6.0	67.1	107.1#
95	0.0	11.5	51.5#



#12
 1,3-Dichlorobenzene
 Concen: 4.270 ng
 RT: 8.18 min Scan# 832
 Delta R.T. 0.14 min
 Lab File: BG030935.D
 Acq: 11 Nov 2017 9:37

Tgt Ion	Resp	Lower	Upper
146	100		
148	56.5	51.4	77.2
75	30.9	26.6	39.8

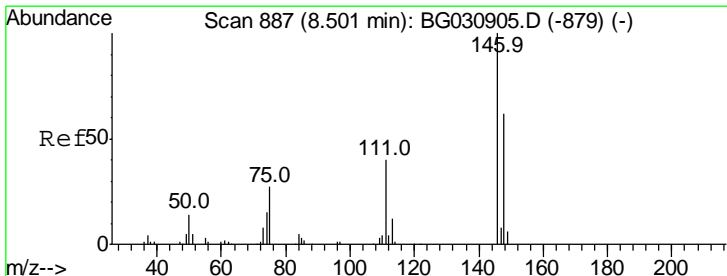
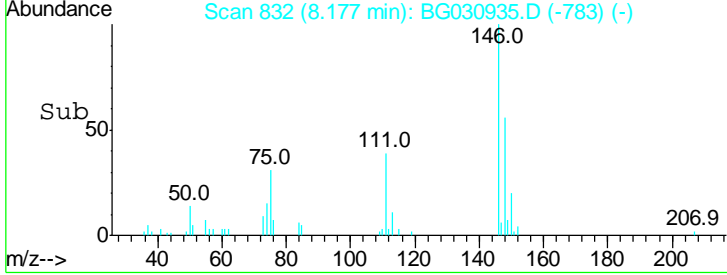
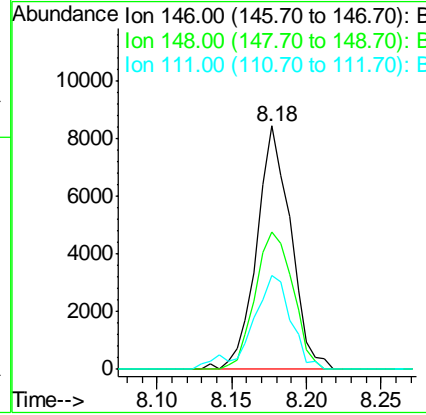
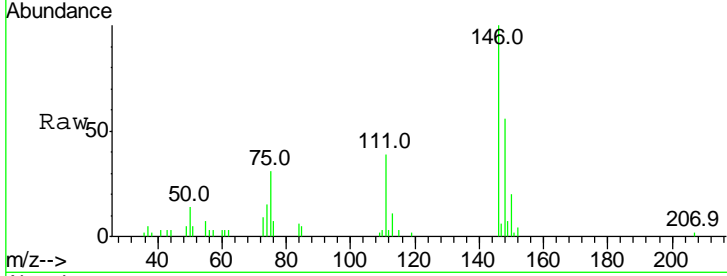




#13
 1,4-Dichlorobenzene
 Concen: 4.213 ng
 RT: 8.18 min Scan# 832
 Delta R.T. -0.01 min
 Lab File: BG030935.D
 Acq: 11 Nov 2017 9:37

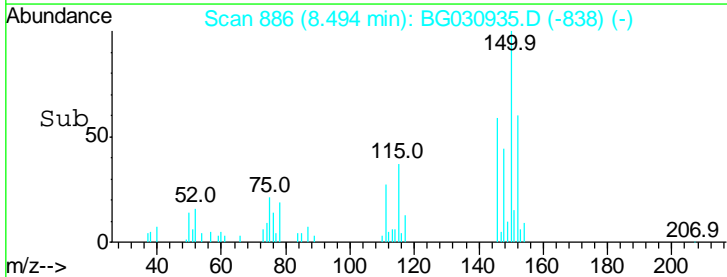
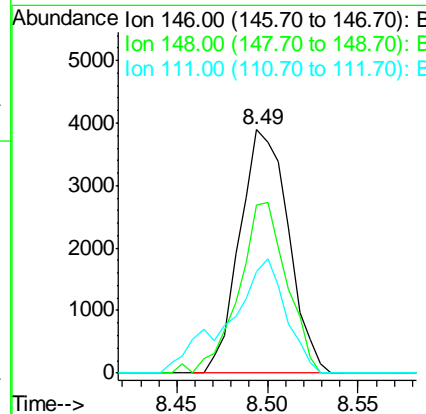
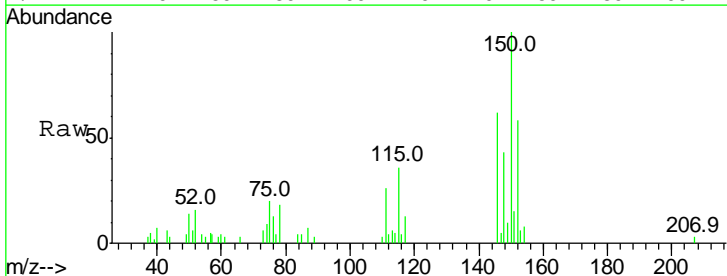
Instrument :
 BNA_G
 ClientSampled :

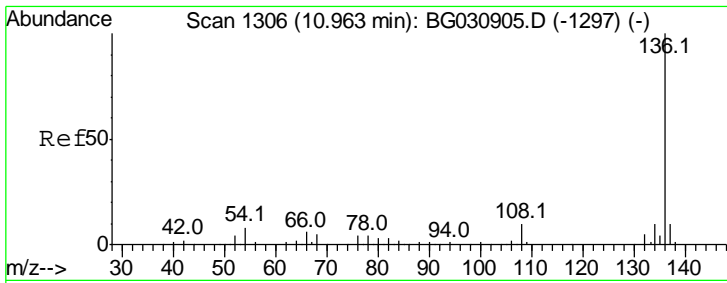
Tgt Ion	Ratio	Lower	Upper
146	100		
148	56.5	53.7	80.5
111	38.6	35.2	52.8



#14
 1,2-Dichlorobenzene
 Concen: 2.408 ng
 RT: 8.49 min Scan# 886
 Delta R.T. -0.02 min
 Lab File: BG030935.D
 Acq: 11 Nov 2017 9:37

Tgt Ion	Ratio	Lower	Upper
146	100		
148	68.8	49.3	73.9
111	41.8	34.3	51.5



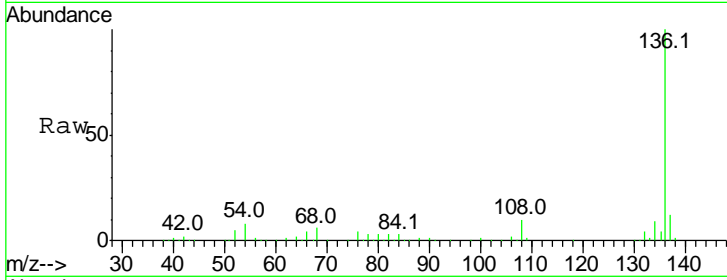


#21
 Naphthalene-d8
 Concen: 20.000 ng
 RT: 10.96 min Scan# 1305
 Delta R.T. -0.01 min
 Lab File: BG030935.D
 Acq: 11 Nov 2017 9:37

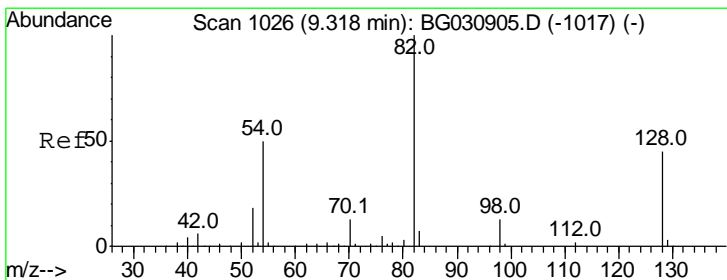
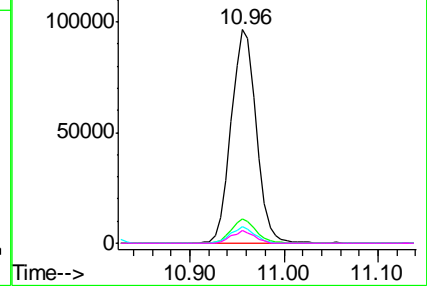
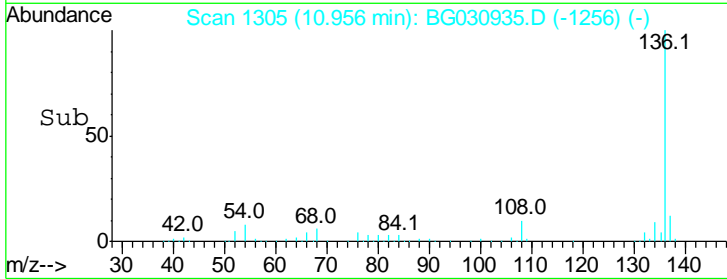
Instrument :
 BNA_G
 ClientSampled :

Tgt Ion: 136 Resp: 179342

Ion	Ratio	Lower	Upper
136	100		
137	11.7	9.2	13.8
54	8.0	10.3	15.5#
68	5.7	4.5	6.7



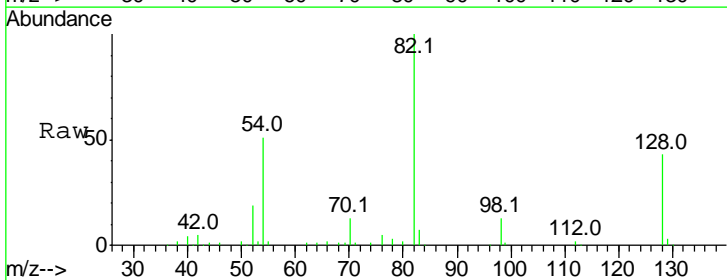
Abundance Ion 136.00 (135.70 to 136.70): BGC
 Ion 137.00 (136.70 to 137.70): BGC
 Ion 54.00 (53.70 to 54.70): BGC
 Ion 68.00 (67.70 to 68.70): BGC



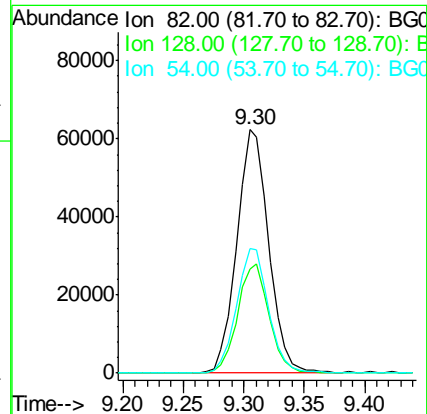
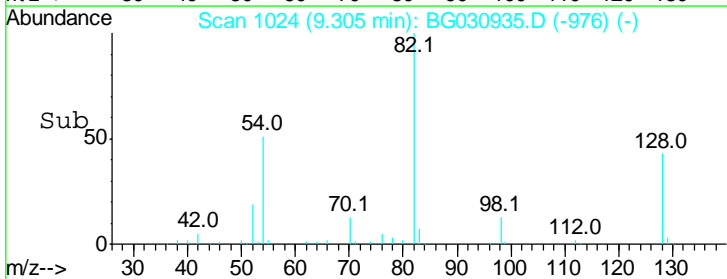
#23
 Nitrobenzene-d5
 Concen: 37.940 ng
 RT: 9.30 min Scan# 1024
 Delta R.T. -0.02 min
 Lab File: BG030935.D
 Acq: 11 Nov 2017 9:37

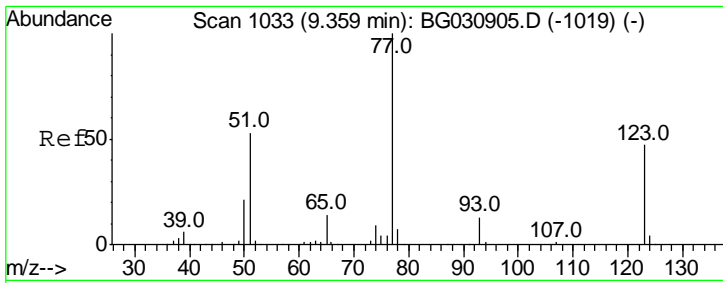
Tgt Ion: 82 Resp: 114828

Ion	Ratio	Lower	Upper
82	100		
128	42.5	29.7	44.5
54	51.1	43.1	64.7



Abundance Ion 82.00 (81.70 to 82.70): BGC
 Ion 128.00 (127.70 to 128.70): BGC
 Ion 54.00 (53.70 to 54.70): BGC

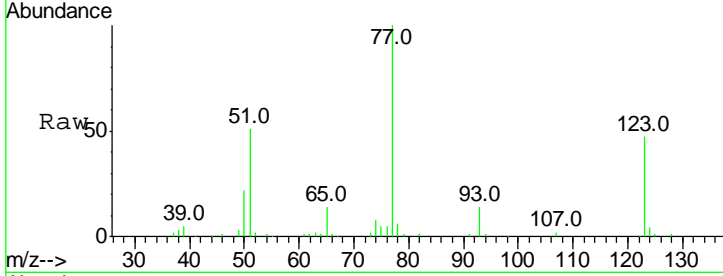




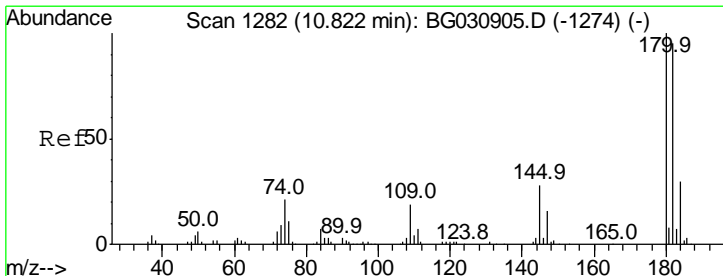
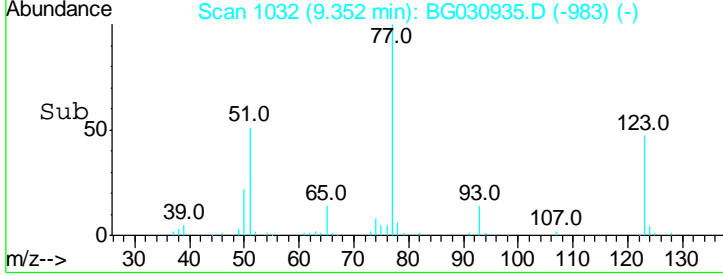
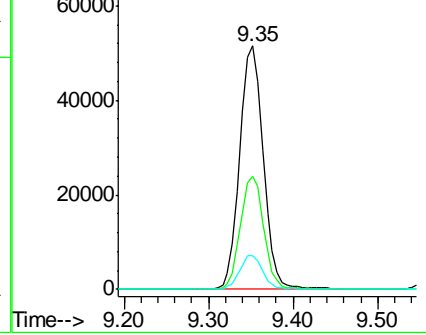
#24
 Nitrobenzene
 Concen: 32.004 ng
 RT: 9.35 min Scan# 1032
 Delta R.T. -0.01 min
 Lab File: BG030935.D
 Acq: 11 Nov 2017 9:37

Instrument :
 BNA_G
 ClientSampled :

Tgt Ion	Resp	Lower	Upper
77	100		
123	46.5	33.0	49.6
65	13.9	13.0	19.6

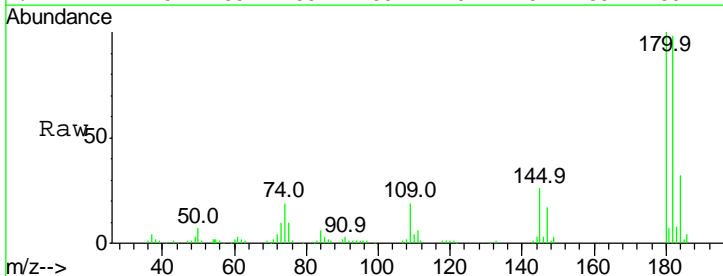


Abundance Ion 77.00 (76.70 to 77.70): BGC
 Ion 123.00 (122.70 to 123.70): BGC
 Ion 65.00 (64.70 to 65.70): BGC

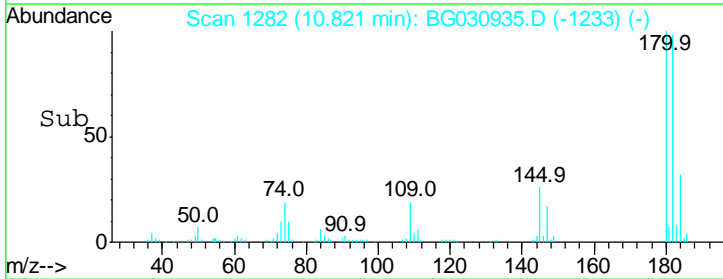
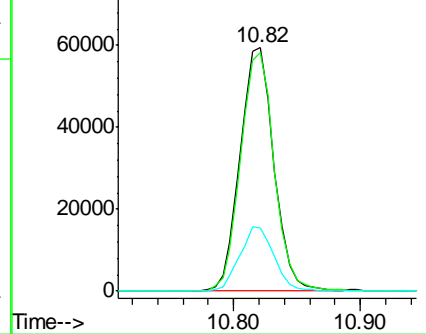


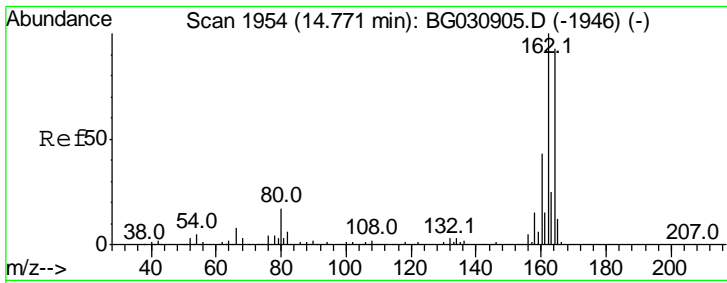
#30
 1,2,4-Trichlorobenzene
 Concen: 32.060 ng
 RT: 10.82 min Scan# 1282
 Delta R.T. -0.01 min
 Lab File: BG030935.D
 Acq: 11 Nov 2017 9:37

Tgt Ion	Resp	Lower	Upper
180	100		
182	97.9	77.5	116.3
145	26.0	23.4	35.2



Abundance Ion 180.00 (179.70 to 180.70): BGC
 Ion 182.00 (181.70 to 182.70): BGC
 Ion 145.00 (144.70 to 145.70): BGC

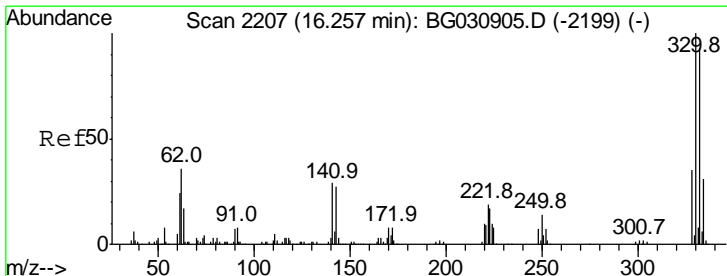
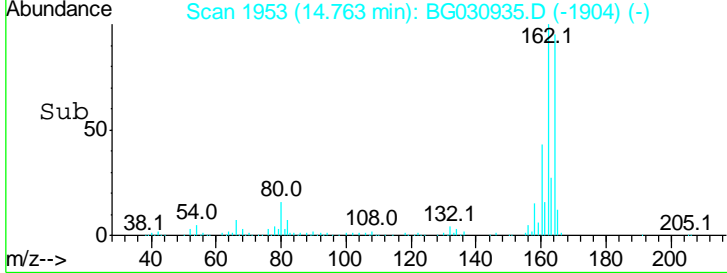
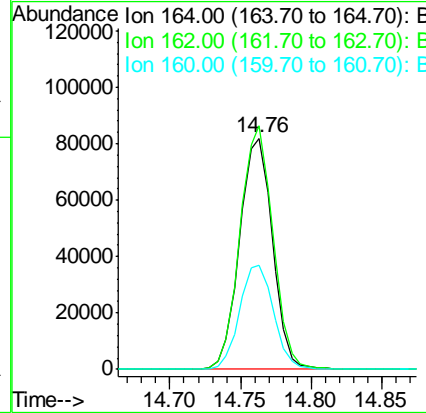
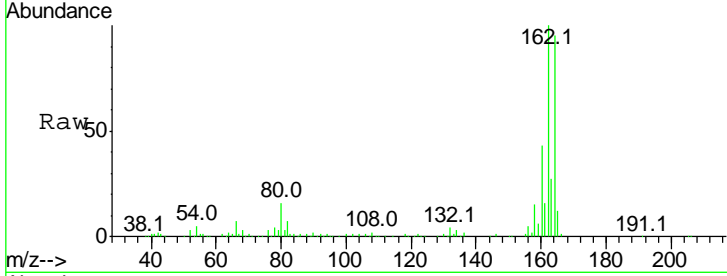




#38
 Acenaphthene-d10
 Concen: 20.000 ng
 RT: 14.76 min Scan# 1953
 Delta R.T. -0.01 min
 Lab File: BG030935.D
 Acq: 11 Nov 2017 9:37

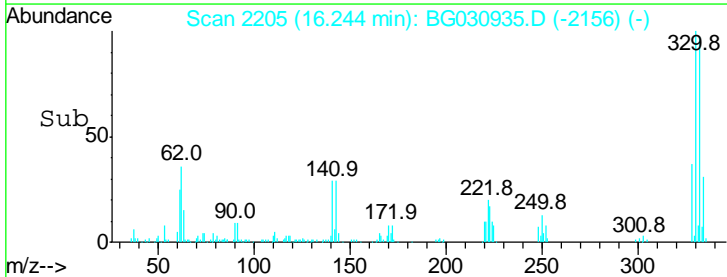
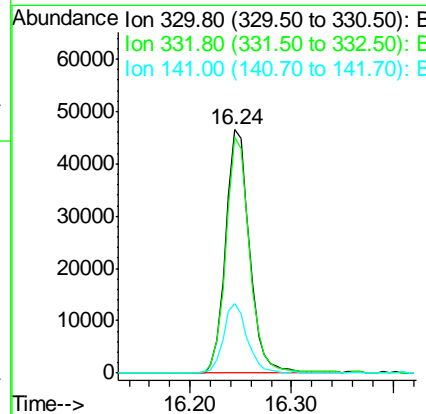
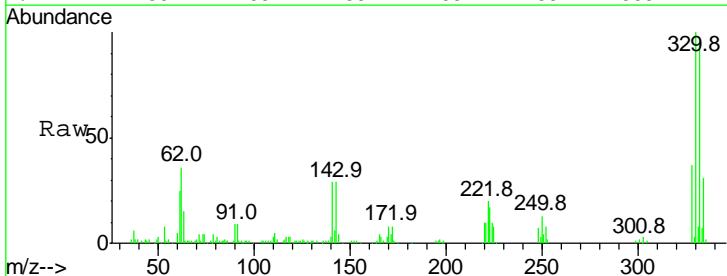
Instrument :
 BNA_G
 ClientSampled :

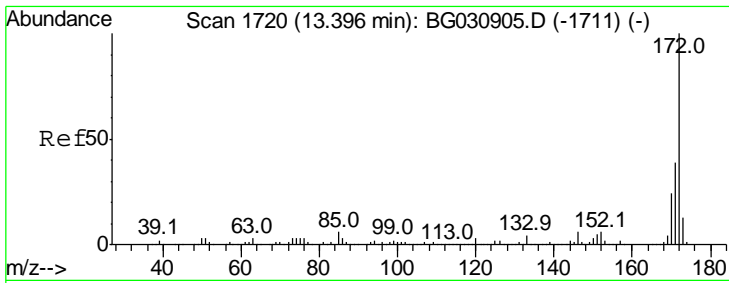
Tgt Ion	Resp	Lower	Upper
164	100		
162	105.3	78.8	118.2
160	45.1	35.4	53.0



#41
 2,4,6-Tribromophenol
 Concen: 35.410 ng
 RT: 16.24 min Scan# 2205
 Delta R.T. -0.01 min
 Lab File: BG030935.D
 Acq: 11 Nov 2017 9:37

Tgt Ion	Resp	Lower	Upper
330	100		
332	95.2	77.0	115.6
141	28.1	25.2	37.8

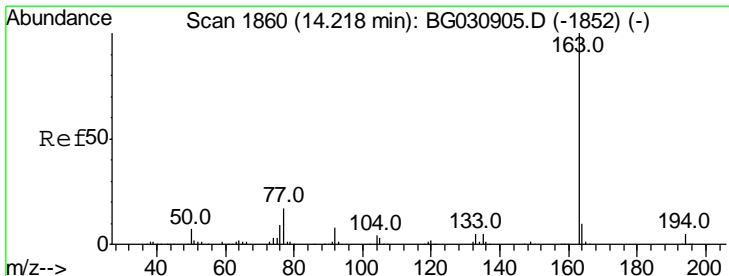
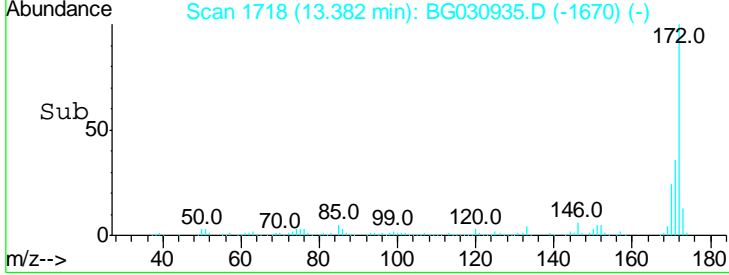
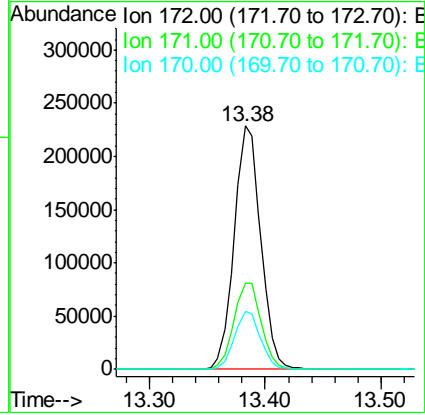
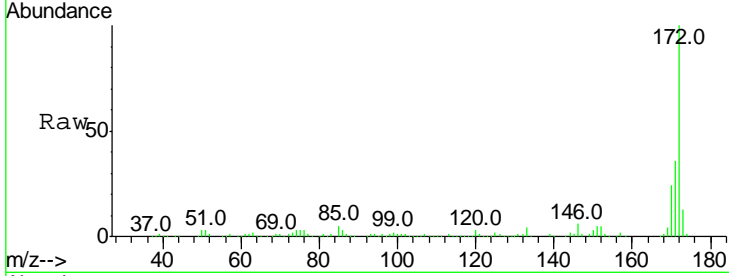




#44
 2-Fluorobiphenyl
 Concen: 39.163 ng
 RT: 13.38 min Scan# 1718
 Delta R.T. -0.02 min
 Lab File: BG030935.D
 Acq: 11 Nov 2017 9:37

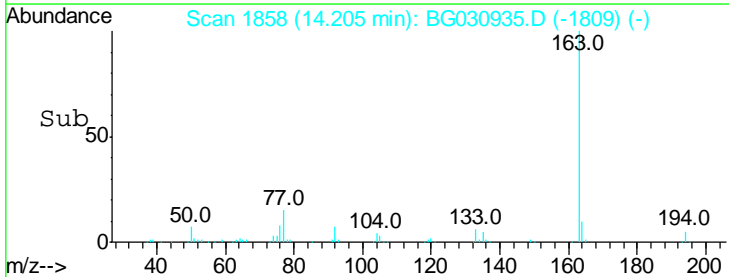
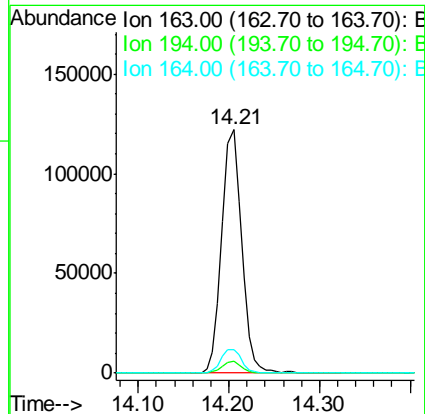
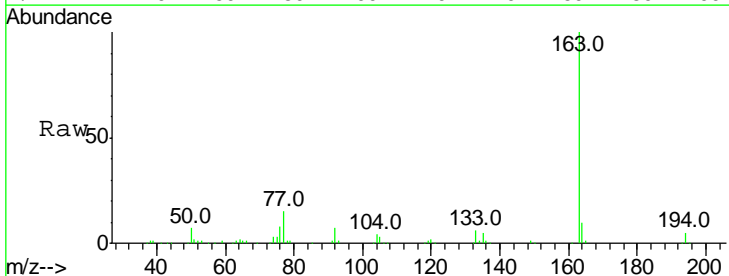
Instrument :
 BNA_G
 ClientSampled :

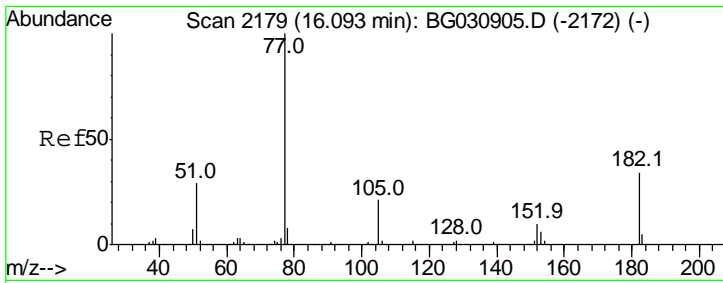
Tgt Ion	Resp	Lower	Upper
172	100		
171	35.6	30.0	45.0
170	23.6	19.5	29.3



#49
 Dimethylphthalate
 Concen: 16.238 ng
 RT: 14.21 min Scan# 1858
 Delta R.T. -0.01 min
 Lab File: BG030935.D
 Acq: 11 Nov 2017 9:37

Tgt Ion	Resp	Lower	Upper
163	100		
194	4.8	3.4	5.2
164	9.5	8.2	12.4

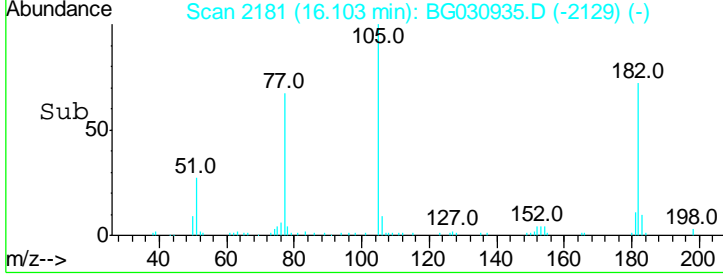
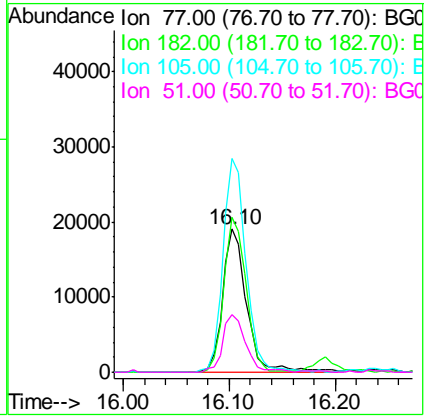
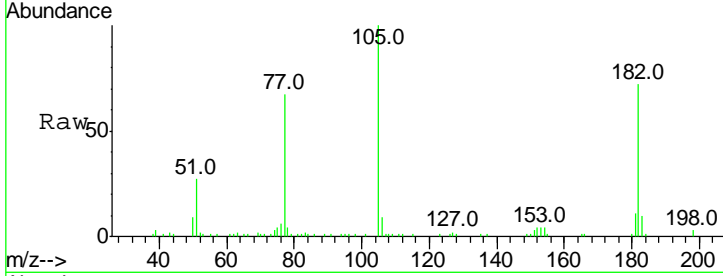




#62
 Azobenzene
 Concen: 3.330 ng
 RT: 16.10 min Scan# 2181
 Delta R.T. 0.01 min
 Lab File: BG030935.D
 Acq: 11 Nov 2017 9:37

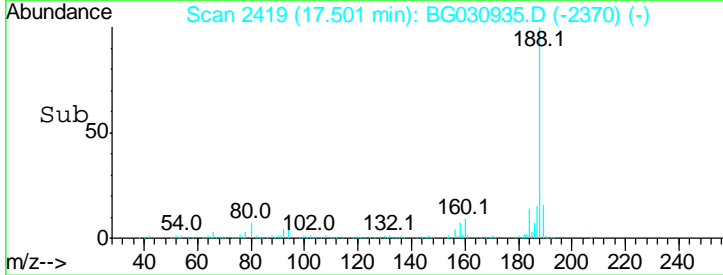
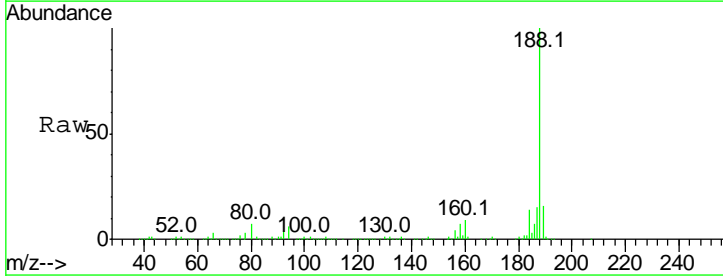
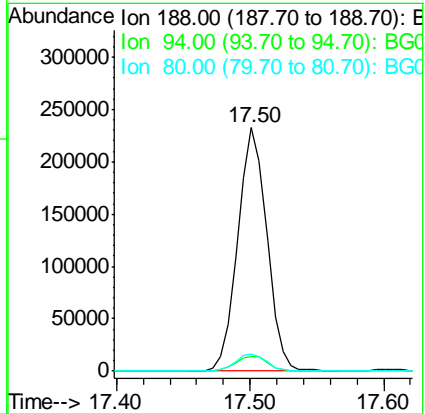
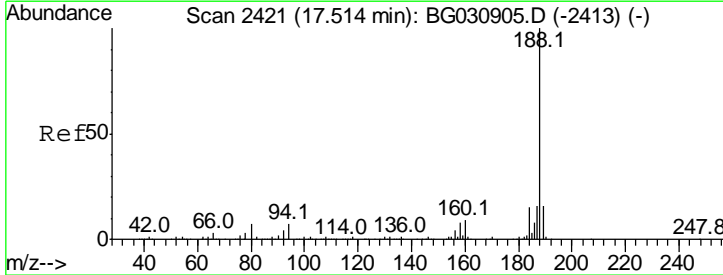
Instrument :
 BNA_G
 ClientSampled :

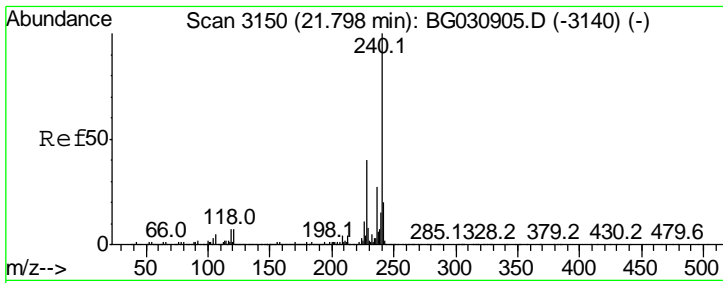
Tgt Ion	Resp	Lower	Upper
77	100		
182	107.9	7.4	47.4#
105	149.1	0.3	40.3#
51	39.8	11.6	51.6



#63
 Phenanthrene-d10
 Concen: 20.000 ng
 RT: 17.50 min Scan# 2419
 Delta R.T. -0.01 min
 Lab File: BG030935.D
 Acq: 11 Nov 2017 9:37

Tgt Ion	Resp	Lower	Upper
188	100		
94	6.1	6.9	10.3#
80	7.0	7.7	11.5#

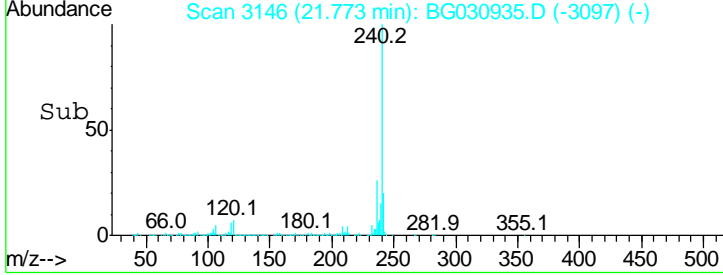
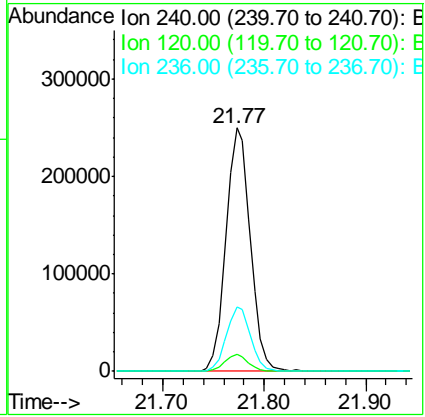
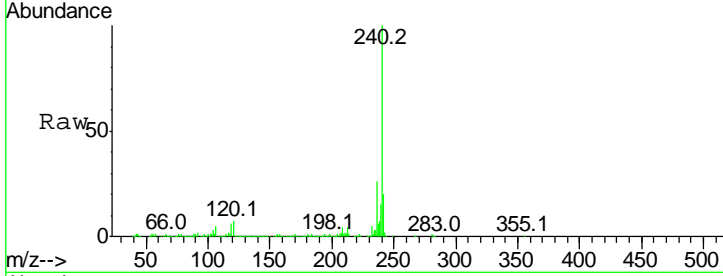




#75
 Chrysene-d12
 Concen: 20.000 ng
 RT: 21.77 min Scan# 3146
 Delta R.T. -0.01 min
 Lab File: BG030935.D
 Acq: 11 Nov 2017 9:37

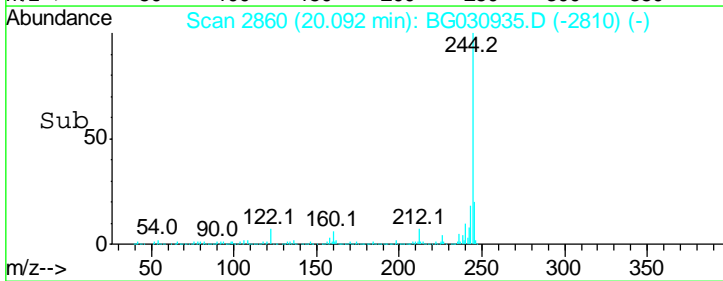
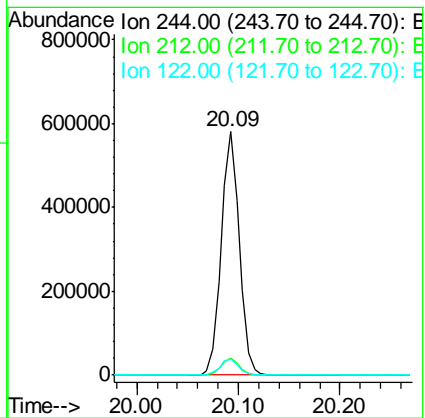
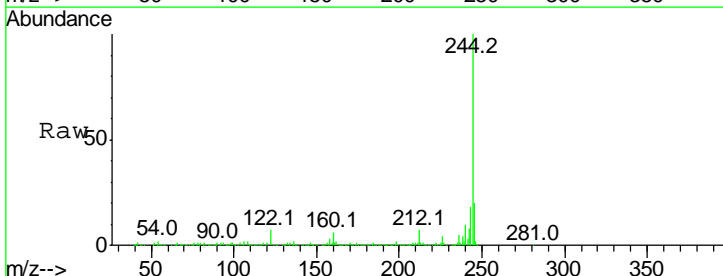
Instrument :
 BNA_G
 ClientSampled :

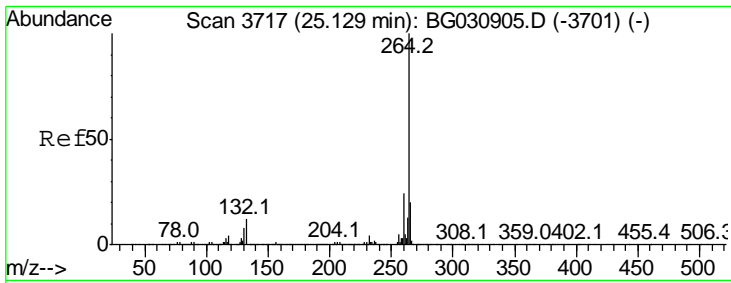
Tgt Ion	Resp	Lower	Upper
240	100		
120	7.0	6.8	10.2
236	26.4	20.9	31.3



#78
 Terphenyl-d14
 Concen: 38.120 ng
 RT: 20.09 min Scan# 2860
 Delta R.T. -0.01 min
 Lab File: BG030935.D
 Acq: 11 Nov 2017 9:37

Tgt Ion	Resp	Lower	Upper
244	100		
212	7.0	5.8	8.8
122	6.5	7.0	10.4#





#86
 Perylene-d12
 Concen: 20.000 ng
 RT: 25.08 min Scan# 3709
 Delta R.T. -0.01 min
 Lab File: BG030935.D
 Acq: 11 Nov 2017 9:37

Instrument :
 BNA_G
 ClientSampled :

Tot Ion: 264 Resp: 418615

Ion	Ratio	Lower	Upper
264	100		
260	24.7	17.4	26.0
265	21.4	17.7	26.5

