

Data Path : Z:\svoasrv\HPCHEM1\BNA_G\Data\BG111122\
 Data File : BG055561.D
 Acq On : 11 Nov 2022 10:53
 Operator : CG/JU
 Sample : N5360-02RE
 Misc :
 ALS Vial : 4 Sample Multiplier: 1

Instrument :
 BNA_G
 ClientSampleId :
 20221113-COMP-12

Quant Time: Nov 11 16:30:33 2022
 Quant Method : Z:\svoasrv\HPCHEM1\BNA_G\Methods\8270-BG110922.M
 Quant Title : ASP BNA STANDARDS FOR 5 POINT CALIBRATION
 QLast Update : Thu Nov 10 03:39:46 2022
 Response via : Initial Calibration

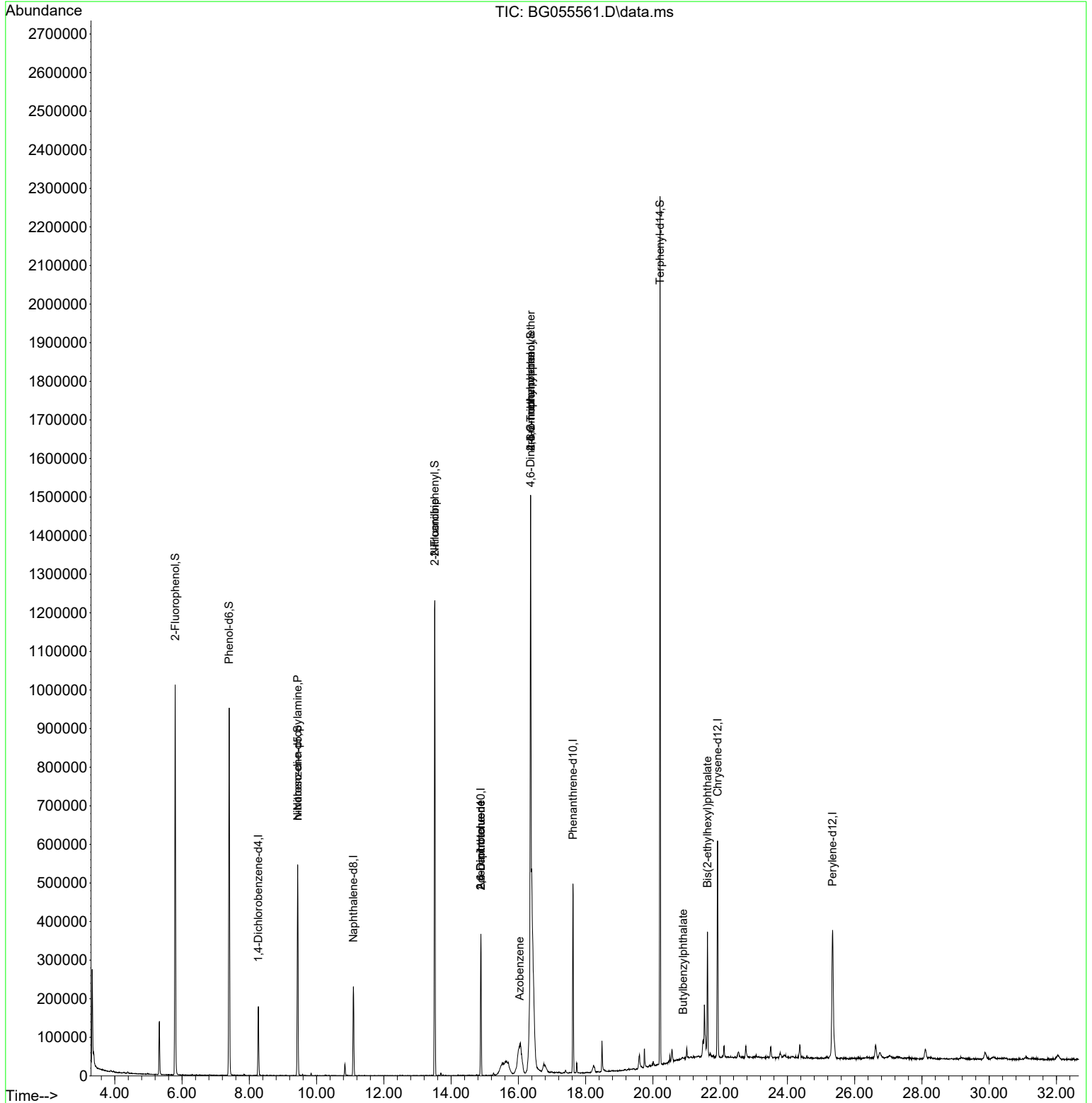
Compound	R.T.	QIon	Response	Conc	Units	Dev(Min)
Internal Standards						
1) 1,4-Dichlorobenzene-d4	8.270	152	51685	20.000	ng	0.00
21) Naphthalene-d8	11.096	136	198596	20.000	ng	0.00
39) Acenaphthene-d10	14.886	164	132023	20.000	ng	0.00
64) Phenanthrene-d10	17.624	188	317829	20.000	ng	0.00
76) Chrysene-d12	21.925	240	358924	20.000	ng	0.00
86) Perylene-d12	25.344	264	388631	20.000	ng	0.00
System Monitoring Compounds						
5) 2-Fluorophenol	5.796	112	429301	158.208	ng	0.00
7) Phenol-d6	7.400	99	533981	142.461	ng	0.00
23) Nitrobenzene-d5	9.439	82	319346	109.010	ng	0.00
42) 2,4,6-Tribromophenol	16.366	330	228544	177.420	ng	0.00
45) 2-Fluorobiphenyl	13.517	172	651464	74.431	ng	0.00
79) Terphenyl-d14	20.215	244	1102890	61.718	ng	0.00
Target Compounds						
19) n-Nitroso-di-n-propyla...	9.439	70	43298	13.977	ng	# 78
48) 2-Nitroaniline	13.511	65	1206	4.365	ng	# 1
51) 2,6-Dinitrotoluene	14.886	165	17406	12.374	ng	# 21
57) 2,4-Dinitrotoluene	14.886	165	17406	10.531	ng	# 22
63) Azobenzene	16.043	77	79665	8.053	ng	# 1
65) 4,6-Dinitro-2-methylph...	16.360	198	569	2.636	ng	# 1
67) 4-Bromophenyl-phenylether	16.366	248	15002	4.627	ng	# 1
80) Butylbenzylphthalate	20.902	149	620	3.427	ng	# 42
84) Bis(2-ethylhexyl)phtha...	21.625	149	147402	12.023	ng	# 53

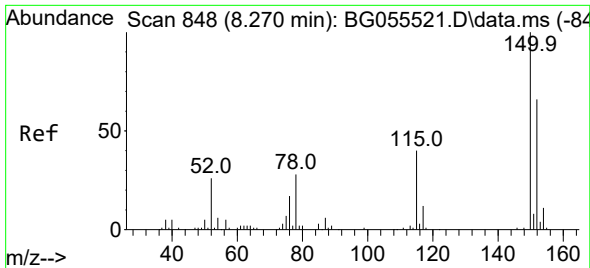
(#) = qualifier out of range (m) = manual integration (+) = signals summed

Data Path : Z:\svoasrv\HPCHEM1\BNA_G\Data\BG111122\
 Data File : BG055561.D
 Acq On : 11 Nov 2022 10:53
 Operator : CG/JU
 Sample : N5360-02RE
 Misc :
 ALS Vial : 4 Sample Multiplier: 1

Instrument :
 BNA_G
 ClientSampleId :
 20221113-COMP-12

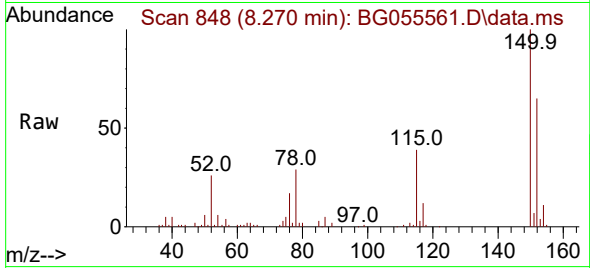
Quant Time: Nov 11 16:30:33 2022
 Quant Method : Z:\svoasrv\HPCHEM1\BNA_G\Methods\8270-BG110922.M
 Quant Title : ASP BNA STANDARDS FOR 5 POINT CALIBRATION
 QLast Update : Thu Nov 10 03:39:46 2022
 Response via : Initial Calibration



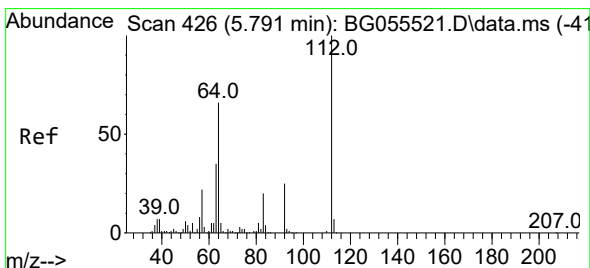
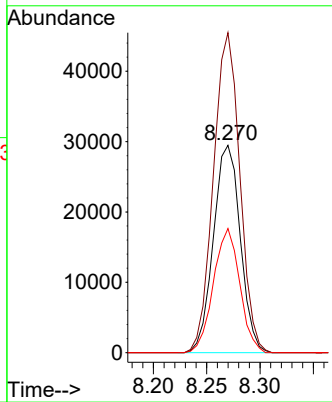
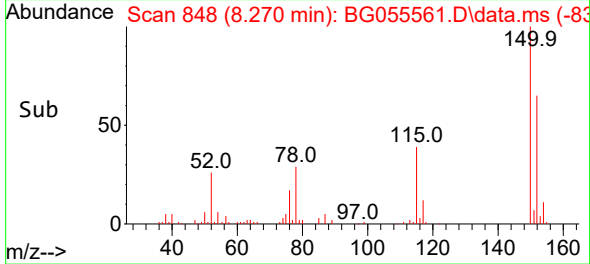


#1
 1,4-Dichlorobenzene-d4
 Concen: 20.000 ng
 RT: 8.270 min Scan# 84
 Delta R.T. -0.000 min
 Lab File: BG055561.D
 Acq: 11 Nov 2022 10:53

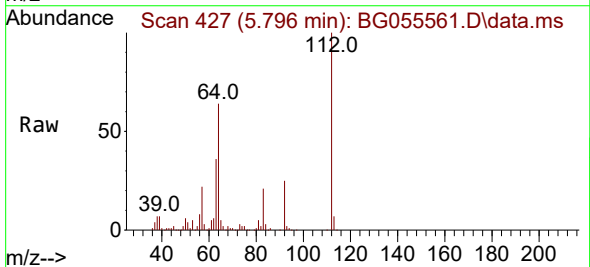
Instrument :
 BNA_G
 ClientSampleId :
 20221113-COMP-12



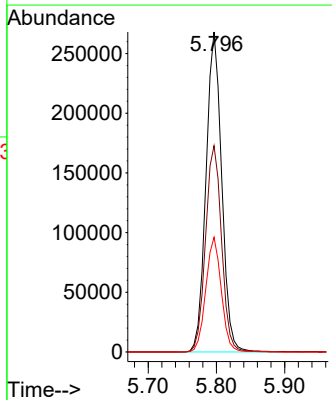
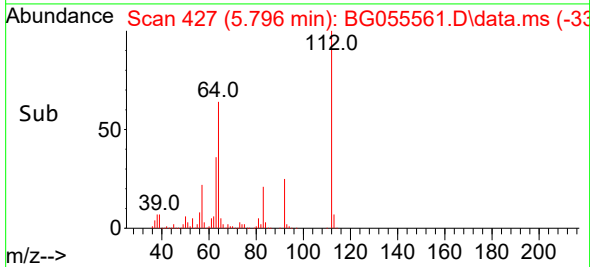
Tgt Ion:152 Resp: 51685
 Ion Ratio Lower Upper
 152 100
 150 154.3 121.0 181.4
 115 59.9 47.8 71.8

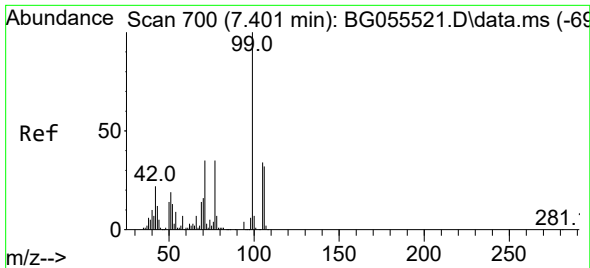


#5
 2-Fluorophenol
 Concen: 158.208 ng
 RT: 5.796 min Scan# 427
 Delta R.T. 0.005 min
 Lab File: BG055561.D
 Acq: 11 Nov 2022 10:53



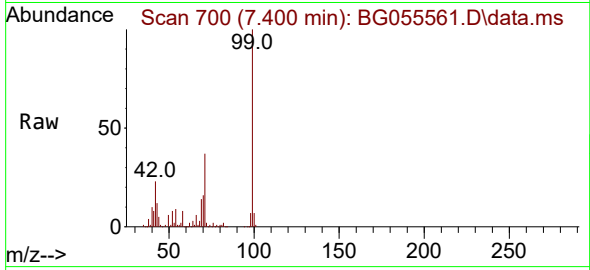
Tgt Ion:112 Resp: 429301
 Ion Ratio Lower Upper
 112 100
 64 64.4 52.6 78.8
 63 35.9 28.3 42.5





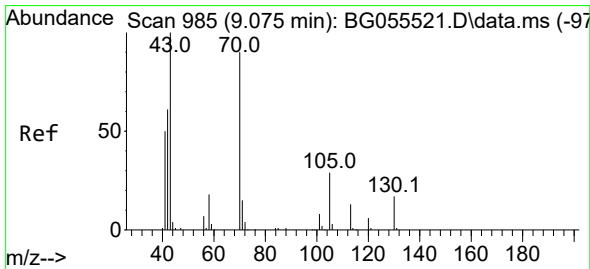
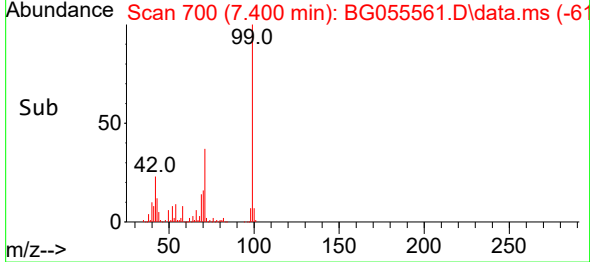
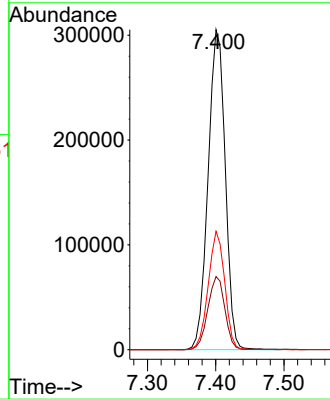
#7
 Phenol-d6
 Concen: 142.461 ng
 RT: 7.400 min Scan# 700
 Delta R.T. -0.001 min
 Lab File: BG055561.D
 Acq: 11 Nov 2022 10:53

Instrument : BNA_G
 ClientSampleId : 20221113-COMP-12



Tgt Ion: 99 Resp: 533981

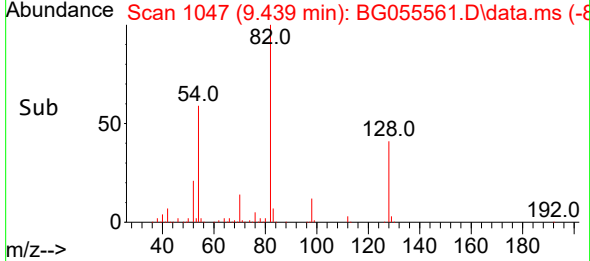
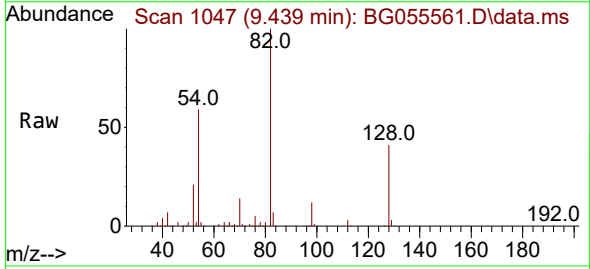
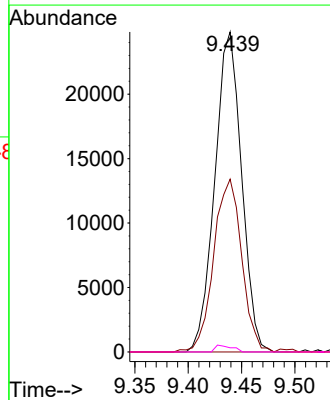
Ion	Ratio	Lower	Upper
99	100		
42	22.8	17.5	26.3
71	37.0	28.3	42.5

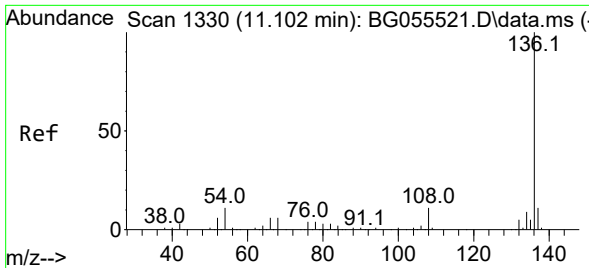


#19
 n-Nitroso-di-n-propylamine
 Concen: 13.977 ng
 RT: 9.439 min Scan# 1047
 Delta R.T. 0.364 min
 Lab File: BG055561.D
 Acq: 11 Nov 2022 10:53

Tgt Ion: 70 Resp: 43298

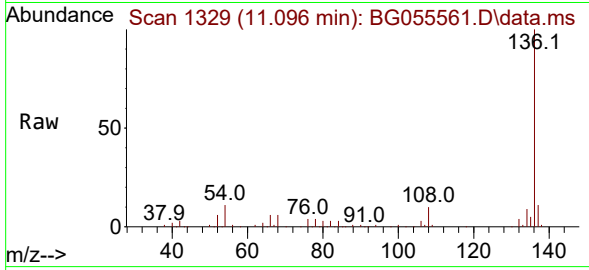
Ion	Ratio	Lower	Upper
70	100		
42	54.0	54.8	82.2#
101	0.0	6.8	10.2#
130	1.3	14.9	22.3#



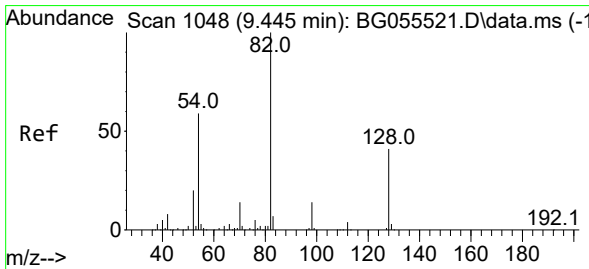
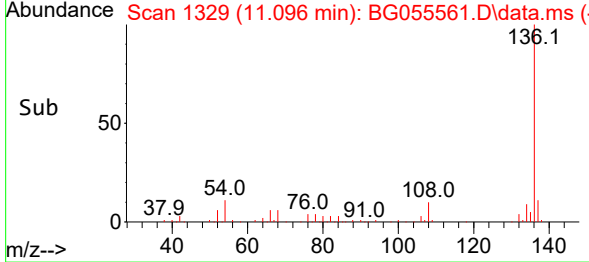
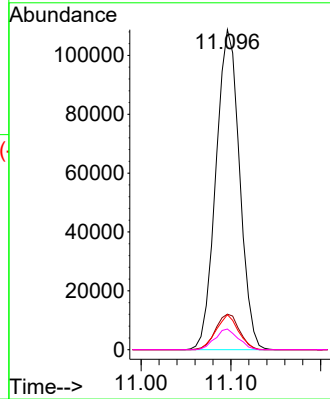


#21
 Naphthalene-d8
 Concen: 20.000 ng
 RT: 11.096 min Scan# 11
 Delta R.T. -0.006 min
 Lab File: BG055561.D
 Acq: 11 Nov 2022 10:53

Instrument :
 BNA_G
 ClientSampleId :
 20221113-COMP-12

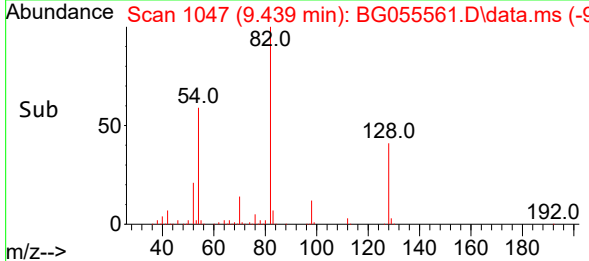
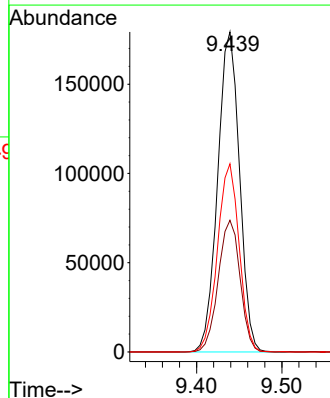
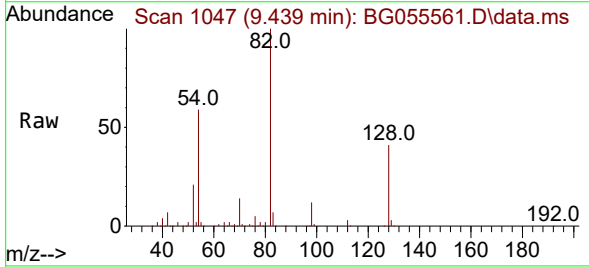


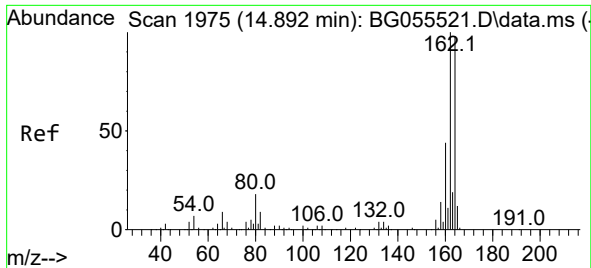
Tgt Ion:136 Resp: 198596
 Ion Ratio Lower Upper
 136 100
 137 11.1 8.6 12.8
 54 10.9 8.6 12.8
 68 6.5 4.6 6.8



#23
 Nitrobenzene-d5
 Concen: 109.010 ng
 RT: 9.439 min Scan# 1047
 Delta R.T. -0.006 min
 Lab File: BG055561.D
 Acq: 11 Nov 2022 10:53

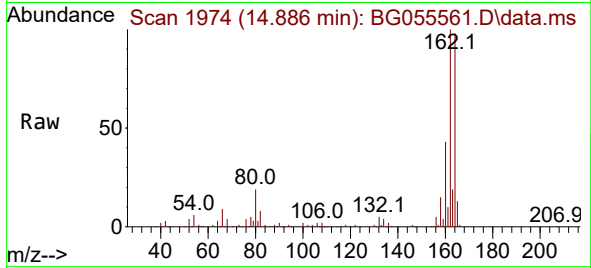
Tgt Ion: 82 Resp: 319346
 Ion Ratio Lower Upper
 82 100
 128 41.1 32.6 49.0
 54 58.8 47.3 70.9



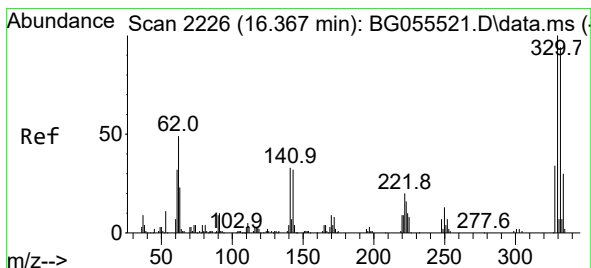
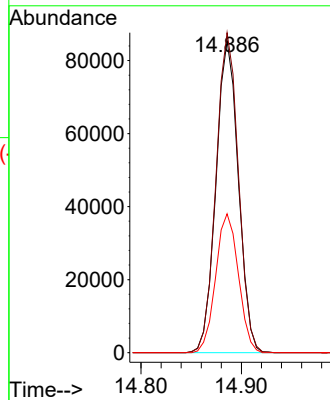
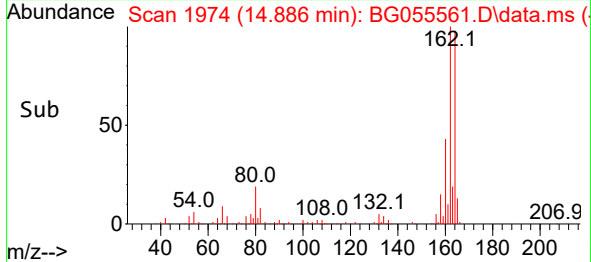


#39
 Acenaphthene-d10
 Concen: 20.000 ng
 RT: 14.886 min Scan# 1974
 Delta R.T. -0.006 min
 Lab File: BG055561.D
 Acq: 11 Nov 2022 10:53

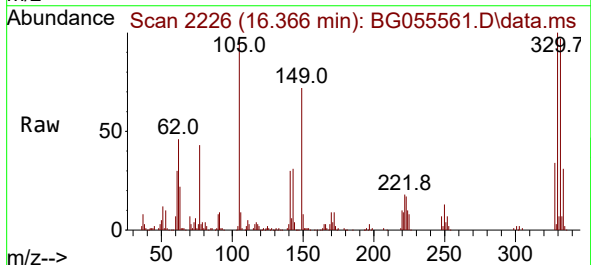
Instrument :
 BNA_G
 ClientSampleId :
 20221113-COMP-12



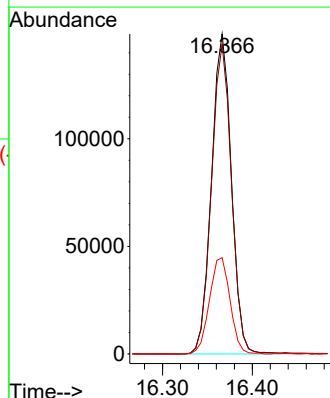
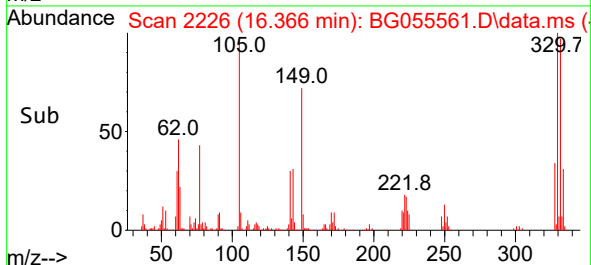
Tgt Ion:164 Resp: 132023
 Ion Ratio Lower Upper
 164 100
 162 102.5 81.3 121.9
 160 44.5 35.9 53.9

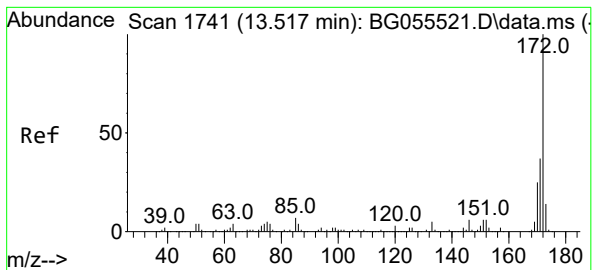


#42
 2,4,6-Tribromophenol
 Concen: 177.420 ng
 RT: 16.366 min Scan# 2226
 Delta R.T. -0.001 min
 Lab File: BG055561.D
 Acq: 11 Nov 2022 10:53



Tgt Ion:330 Resp: 228544
 Ion Ratio Lower Upper
 330 100
 332 97.4 77.4 116.2
 141 31.2 25.4 38.2



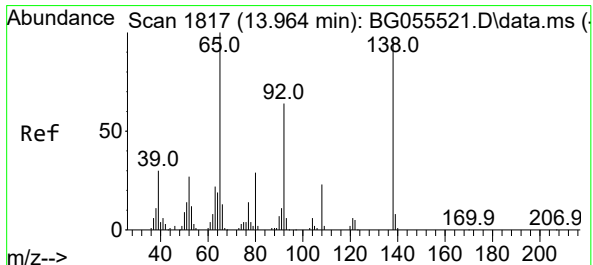
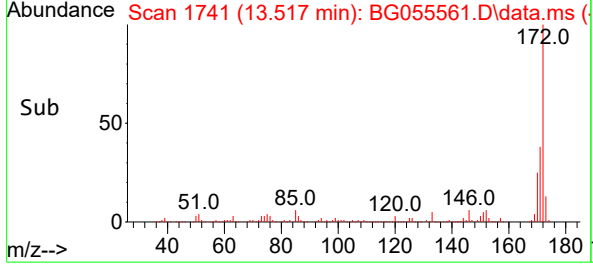
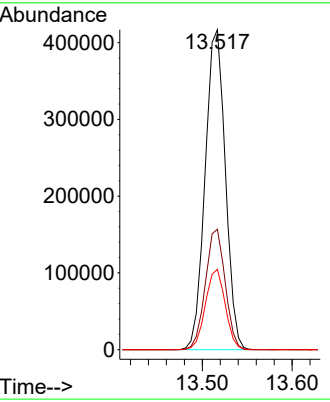
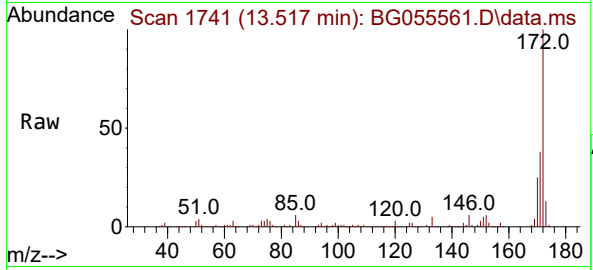


#45
 2-Fluorobiphenyl
 Concen: 74.431 ng
 RT: 13.517 min Scan# 11
 Delta R.T. -0.000 min
 Lab File: BG055561.D
 Acq: 11 Nov 2022 10:53

Instrument : BNA_G
 ClientSampleId : 20221113-COMP-12

Tgt Ion:172 Resp: 651464

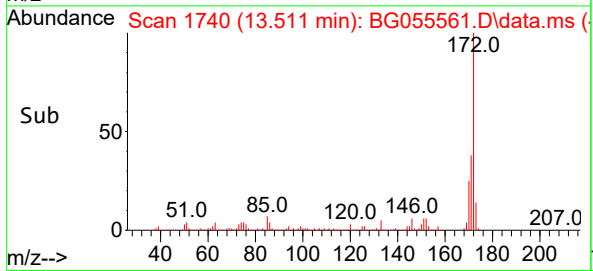
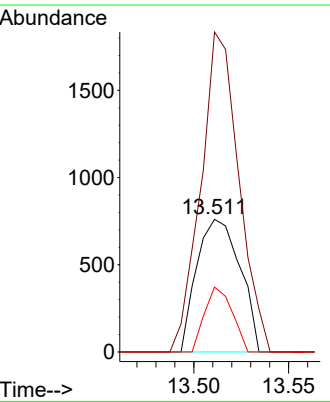
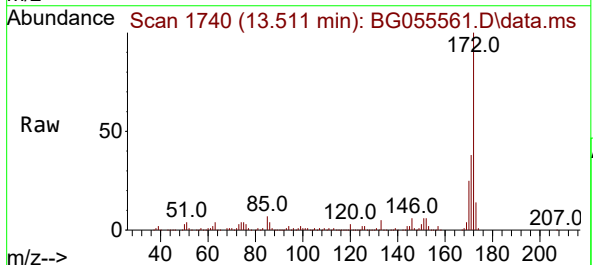
Ion	Ratio	Lower	Upper
172	100		
171	37.7	29.7	44.5
170	25.1	19.8	29.6

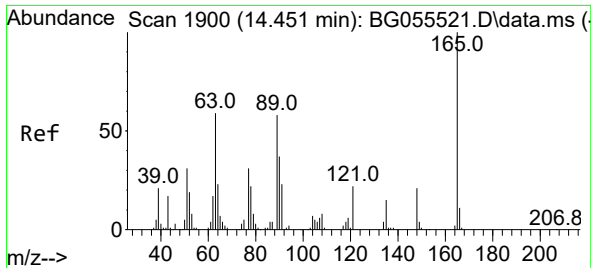


#48
 2-Nitroaniline
 Concen: 4.365 ng
 RT: 13.511 min Scan# 1740
 Delta R.T. -0.453 min
 Lab File: BG055561.D
 Acq: 11 Nov 2022 10:53

Tgt Ion: 65 Resp: 1206

Ion	Ratio	Lower	Upper
65	100		
92	241.1	51.6	77.4#
138	49.0	77.0	115.4#

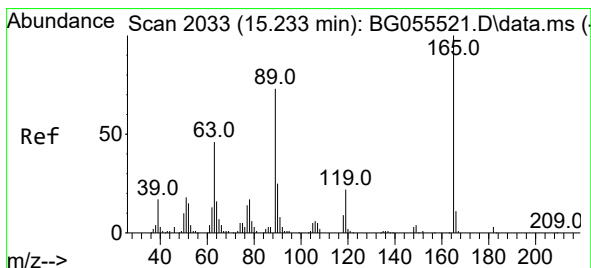
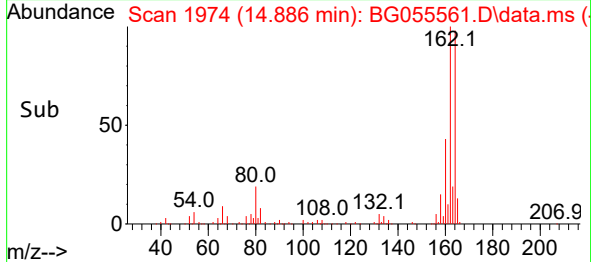
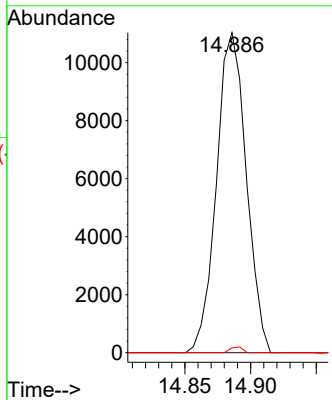
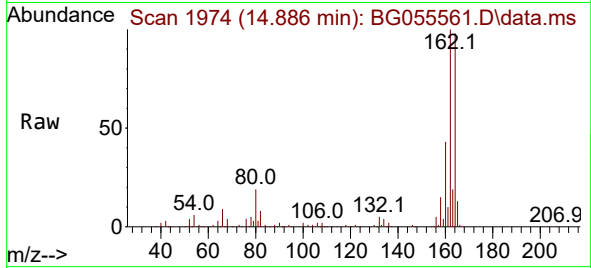




#51
 2,6-Dinitrotoluene
 Concen: 12.374 ng
 RT: 14.886 min Scan# 1974
 Delta R.T. 0.435 min
 Lab File: BG055561.D
 Acq: 11 Nov 2022 10:53

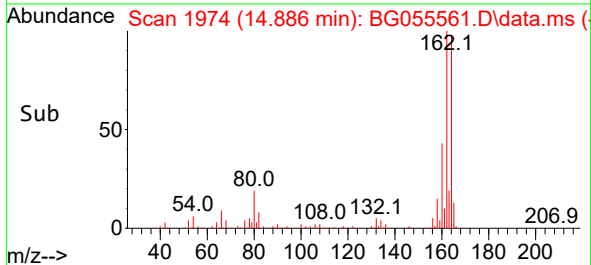
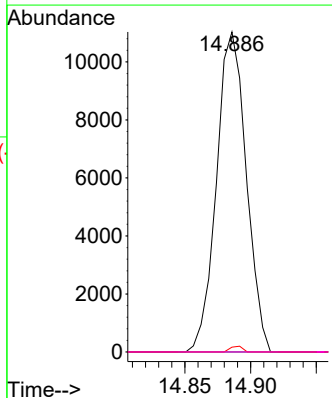
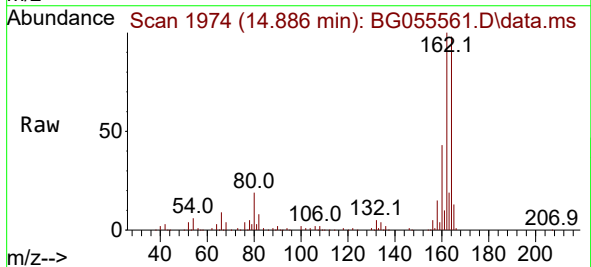
Instrument :
 BNA_G
 ClientSampleId :
 20221113-COMP-12

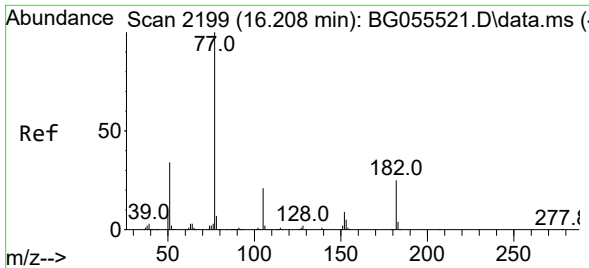
Tgt Ion	Resp	Lower	Upper
165	17406		
165	100		
63	0.0	50.1	75.1#
89	1.5	46.5	69.7#



#57
 2,4-Dinitrotoluene
 Concen: 10.531 ng
 RT: 14.886 min Scan# 1974
 Delta R.T. -0.347 min
 Lab File: BG055561.D
 Acq: 11 Nov 2022 10:53

Tgt Ion	Resp	Lower	Upper
165	17406		
165	100		
63	0.0	37.0	55.4#
89	1.5	58.6	87.8#
182	0.0	2.2	3.2#



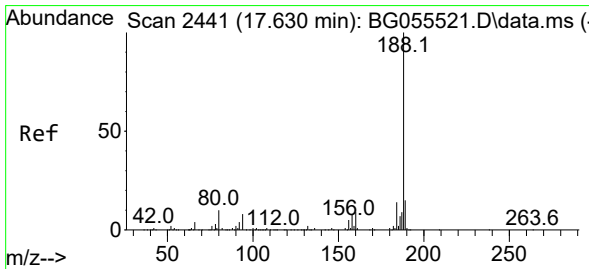
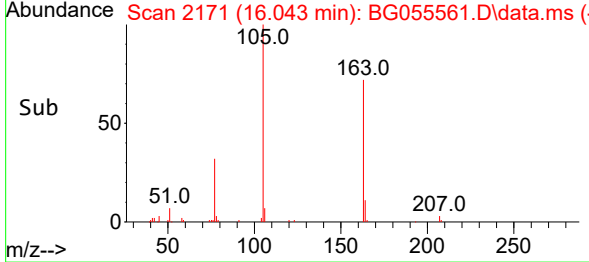
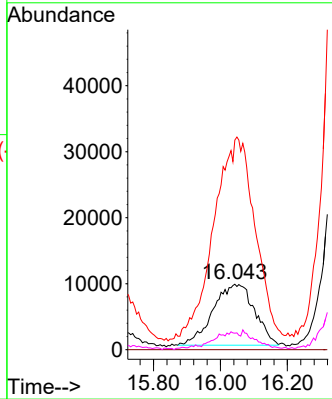
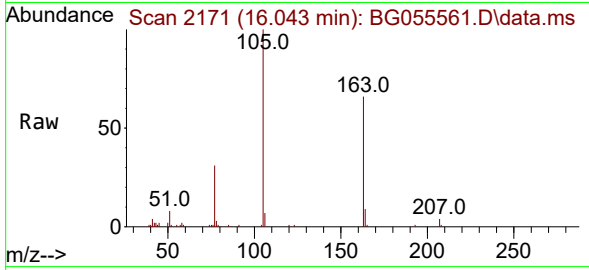


#63
 Azobenzene
 Concen: 8.053 ng
 RT: 16.043 min Scan# 21
 Delta R.T. -0.165 min
 Lab File: BG055561.D
 Acq: 11 Nov 2022 10:53

Instrument : BNA_G
 ClientSampleId : 20221113-COMP-12

Tgt Ion: 77 Resp: 79665

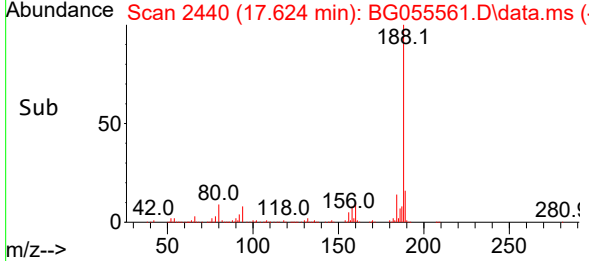
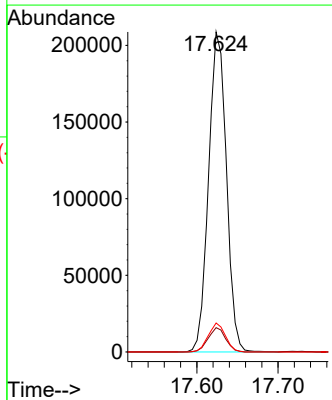
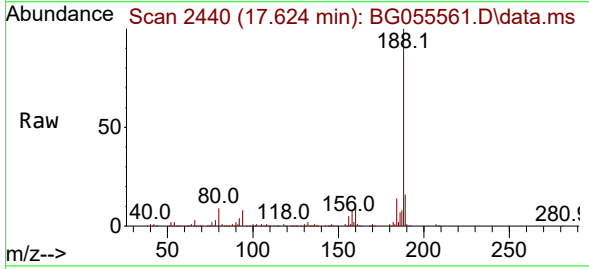
Ion	Ratio	Lower	Upper
77	100		
182	0.0	4.6	44.6#
105	320.1	1.2	41.2#
51	25.3	14.0	54.0

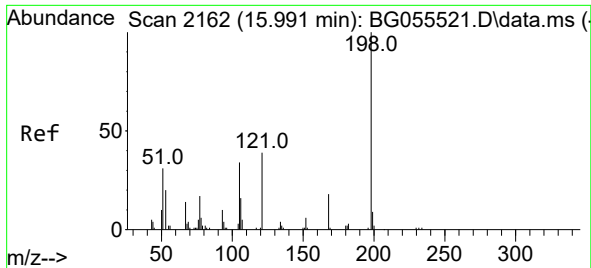


#64
 Phenanthrene-d10
 Concen: 20.000 ng
 RT: 17.624 min Scan# 2440
 Delta R.T. -0.006 min
 Lab File: BG055561.D
 Acq: 11 Nov 2022 10:53

Tgt Ion: 188 Resp: 317829

Ion	Ratio	Lower	Upper
188	100		
94	7.6	6.4	9.6
80	9.1	7.6	11.4

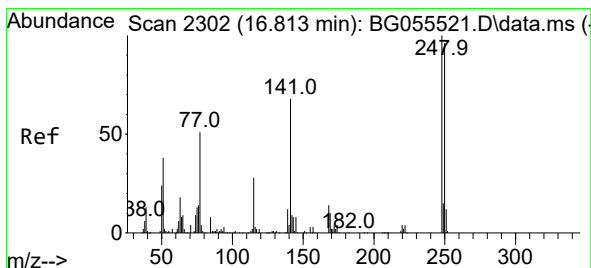
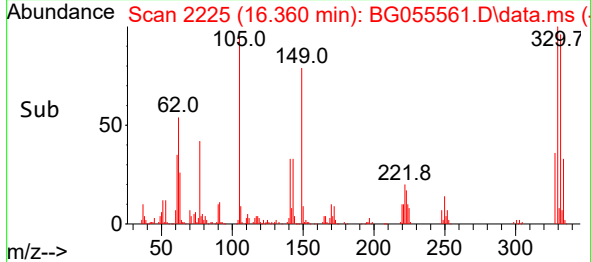
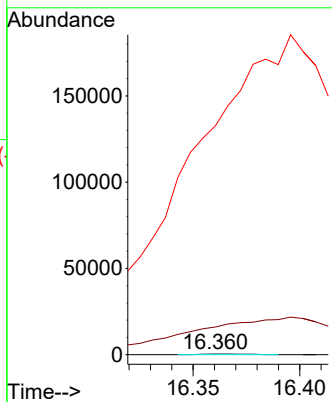
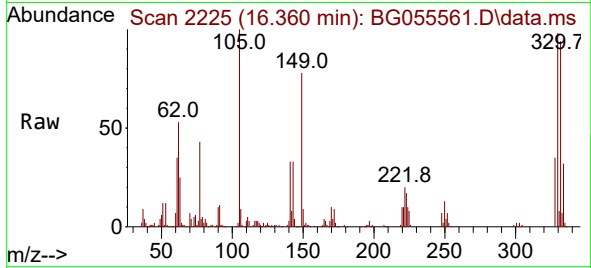




#65
 4,6-Dinitro-2-methylphenol
 Concen: 2.636 ng
 RT: 16.360 min Scan# 2162
 Delta R.T. 0.369 min
 Lab File: BG055561.D
 Acq: 11 Nov 2022 10:53

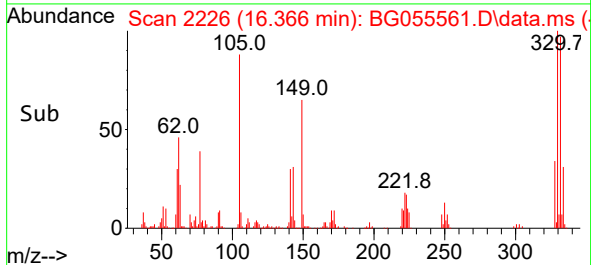
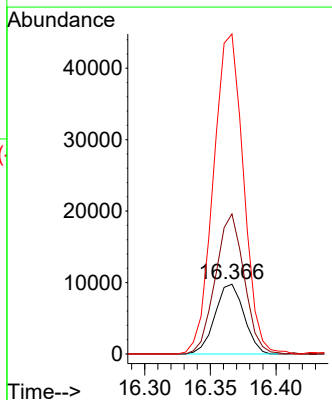
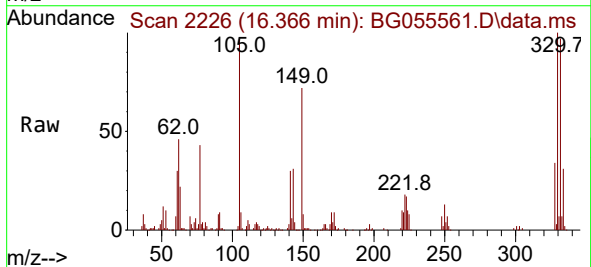
Instrument : BNA_G
 ClientSampleId : 20221113-COMP-12

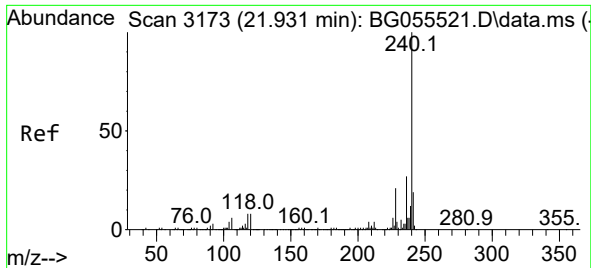
Tgt Ion:198 Resp: 569
 Ion Ratio Lower Upper
 198 100
 51 4016.5 24.7 64.7#
 105 33184.0 17.6 57.6#



#67
 4-Bromophenyl-phenylether
 Concen: 4.627 ng
 RT: 16.366 min Scan# 2226
 Delta R.T. -0.447 min
 Lab File: BG055561.D
 Acq: 11 Nov 2022 10:53

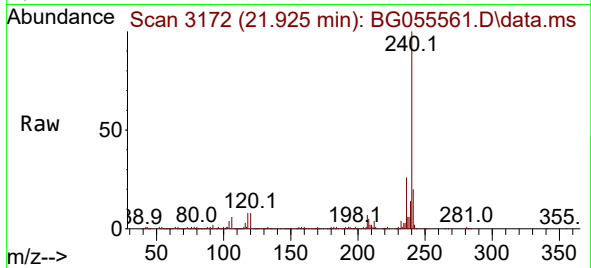
Tgt Ion:248 Resp: 15002
 Ion Ratio Lower Upper
 248 100
 250 200.8 76.9 115.3#
 141 459.1 54.3 81.5#



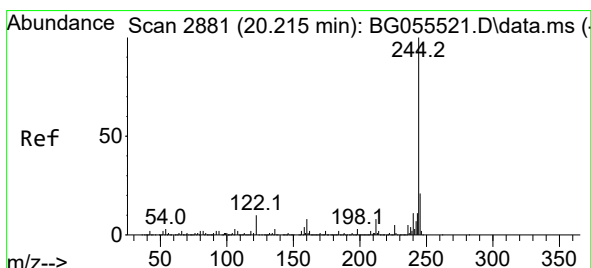
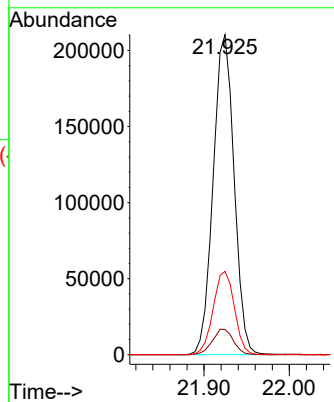
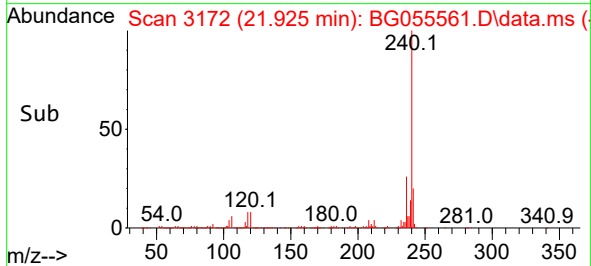


#76
 Chrysene-d12
 Concen: 20.000 ng
 RT: 21.925 min Scan# 31
 Delta R.T. -0.006 min
 Lab File: BG055561.D
 Acq: 11 Nov 2022 10:53

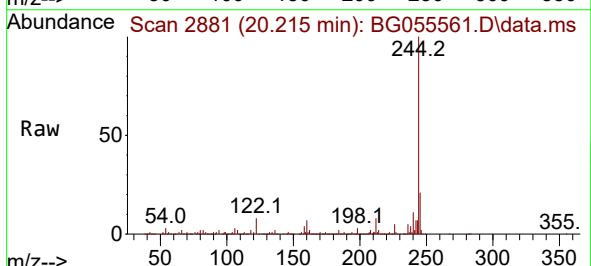
Instrument :
 BNA_G
 ClientSampleId :
 20221113-COMP-12



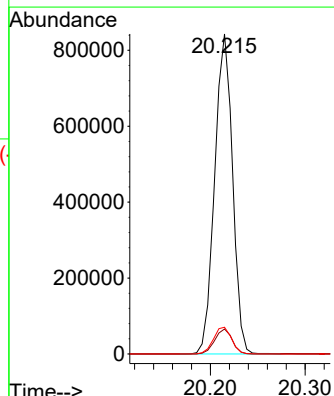
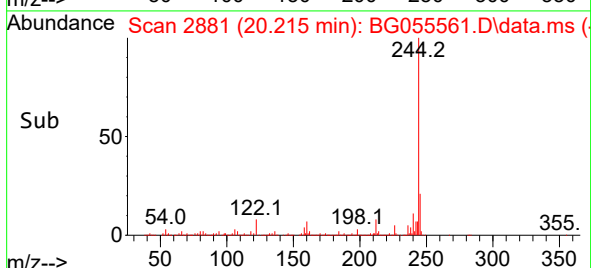
Tgt Ion:240 Resp: 358924
 Ion Ratio Lower Upper
 240 100
 120 7.9 6.1 9.1
 236 26.0 21.4 32.0

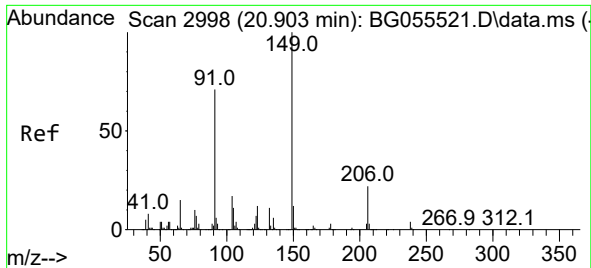


#79
 Terphenyl-d14
 Concen: 61.718 ng
 RT: 20.215 min Scan# 2881
 Delta R.T. -0.000 min
 Lab File: BG055561.D
 Acq: 11 Nov 2022 10:53



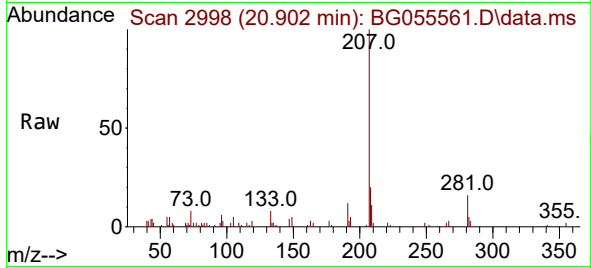
Tgt Ion:244 Resp: 1102890
 Ion Ratio Lower Upper
 244 100
 212 7.8 6.5 9.7
 122 8.4 7.7 11.5



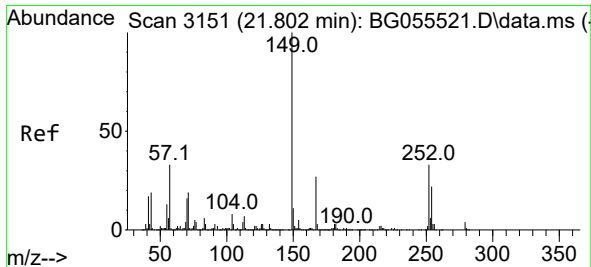
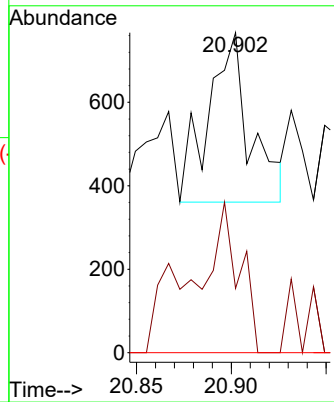
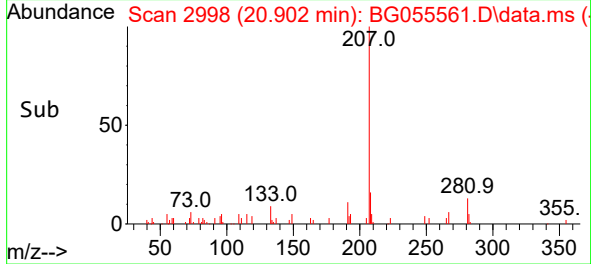


#80
 Butylbenzylphthalate
 Concen: 3.427 ng
 RT: 20.902 min Scan# 2998
 Delta R.T. -0.001 min
 Lab File: BG055561.D
 Acq: 11 Nov 2022 10:53

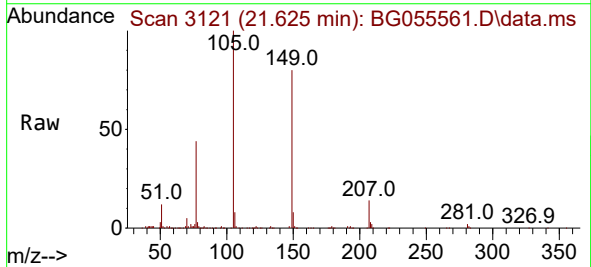
Instrument :
 BNA_G
 ClientSampleId :
 20221113-COMP-12



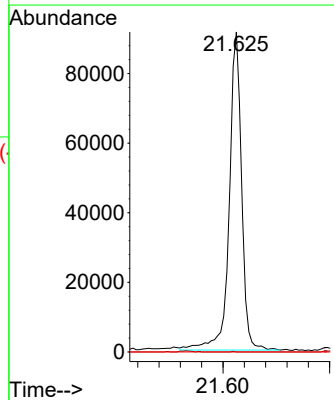
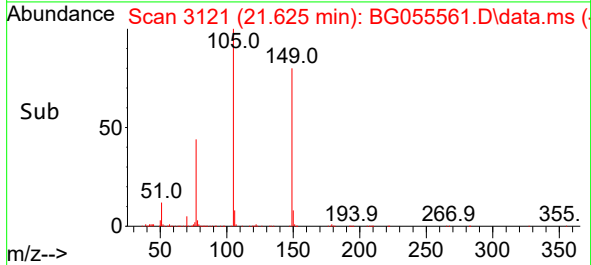
Tgt Ion:149 Resp: 620
 Ion Ratio Lower Upper
 149 100
 91 20.1 56.8 85.2#
 206 0.0 17.3 25.9#

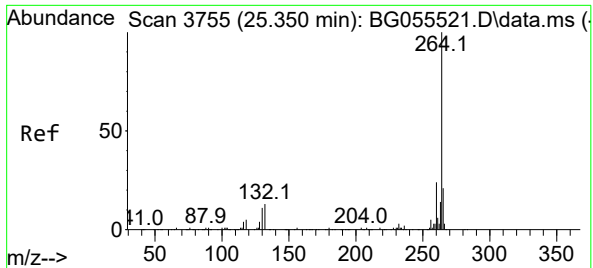


#84
 Bis(2-ethylhexyl)phthalate
 Concen: 12.023 ng
 RT: 21.625 min Scan# 3121
 Delta R.T. -0.177 min
 Lab File: BG055561.D
 Acq: 11 Nov 2022 10:53



Tgt Ion:149 Resp: 147402
 Ion Ratio Lower Upper
 149 100
 167 0.0 21.4 32.2#
 279 0.0 3.4 5.2#





#86
 Perylene-d12
 Concen: 20.000 ng
 RT: 25.344 min Scan# 31
 Delta R.T. -0.006 min
 Lab File: BG055561.D
 Acq: 11 Nov 2022 10:53

Instrument :
 BNA_G
 ClientSampleId :
 20221113-COMP-12

Tgt Ion:264 Resp: 388631

Ion	Ratio	Lower	Upper
264	100		
260	24.1	19.4	29.2
265	22.0	17.1	25.7

