

Data Path : Z:\HPCHEM1\BNA G\DATA\BG111315\  
 Data File : BG019594.D  
 Acq On : 13 Nov 2015 16:27  
 Operator : UM/NP  
 Sample : G4342-07MS  
 Misc :  
 ALS Vial : 6 Sample Multiplier: 1

Instrument :  
 BNA\_G  
 ClientSampleId :  
 D9KP7MS

Quant Time: Nov 14 00:24:34 2015  
 Quant Method : Z:\HPCHEM1\BNA G\METHODS\SOM02.2-EPA-BG102815.M  
 Quant Title : SVOA CALIBRATION  
 QLast Update : Sat Nov 14 00:06:36 2015  
 Response via : Initial Calibration

Internal Standards	R.T.	QIon	Response	Conc	Units	Dev(Min)
1) 1,4-Dichlorobenzene-d4	8.16	152	22741	20.00	ng/ul	0.00
18) Naphthalene-d8	10.99	136	95791	20.00	ng/ul	0.00
36) Acenaphthene-d10	14.79	164	74880	20.00	ng/ul	0.00
62) Phenanthrene-d10	17.53	188	211768	20.00	ng/ul	0.00
78) Chrysene-d12	21.81	240	279838	20.00	ng/ul	0.00
86) Perylene-d12	25.14	264	265583	20.00	ng/ul	-0.01

## System Monitoring Compounds

3) 1,4-Dioxane-d8	3.45	96	2661	5.60	ng/uL	0.00
5) Phenol-d5	7.30	99	59814	28.65	ng/ul	0.00
7) Bis-(2-Chloroethyl)ether-d	7.47	67	41594	31.43	ng/ul	0.00
9) 2-Chlorophenol-d4	7.69	132	37357	28.67	ng/ul	0.00
13) 4-Methylphenol-d8	8.87	113	47072	28.31	ng/ul	0.00
19) Nitrobenzene-d5	9.33	128	20558	29.20	ng/ul	0.00
22) 2-Nitrophenol-d4	10.06	143	22524	26.95	ng/ul	0.00
26) 2,4-Dichlorophenol-d3	10.60	165	46949	25.90	ng/ul	0.00
29) 4-Chloroaniline-d4	11.12	131	55499	30.26	ng/ul	0.00
44) Dimethylphthalate-d6	14.19	166	204322	33.09	ng/ul	0.00
47) Acenaphthylene-d8	14.49	160	195618	28.61	ng/ul	0.00
52) 4-Nitrophenol-d4	14.98	143	33183	33.83	ng/ul	0.00
58) Fluorene-d10	15.78	176	161215	28.23	ng/ul	0.00
63) 4,6-Dinitro-2-methylphenol	15.89	200	38484	28.08	ng/ul	0.00
71) Anthracene-d10	17.63	188	309240	32.03	ng/ul	0.00
79) Pyrene-d10	19.91	212	388545	31.73	ng/ul	0.00
90) Benzo(a)pyrene-d12	24.91	264	425491	31.93	ng/ul	-0.01

## Target Compounds

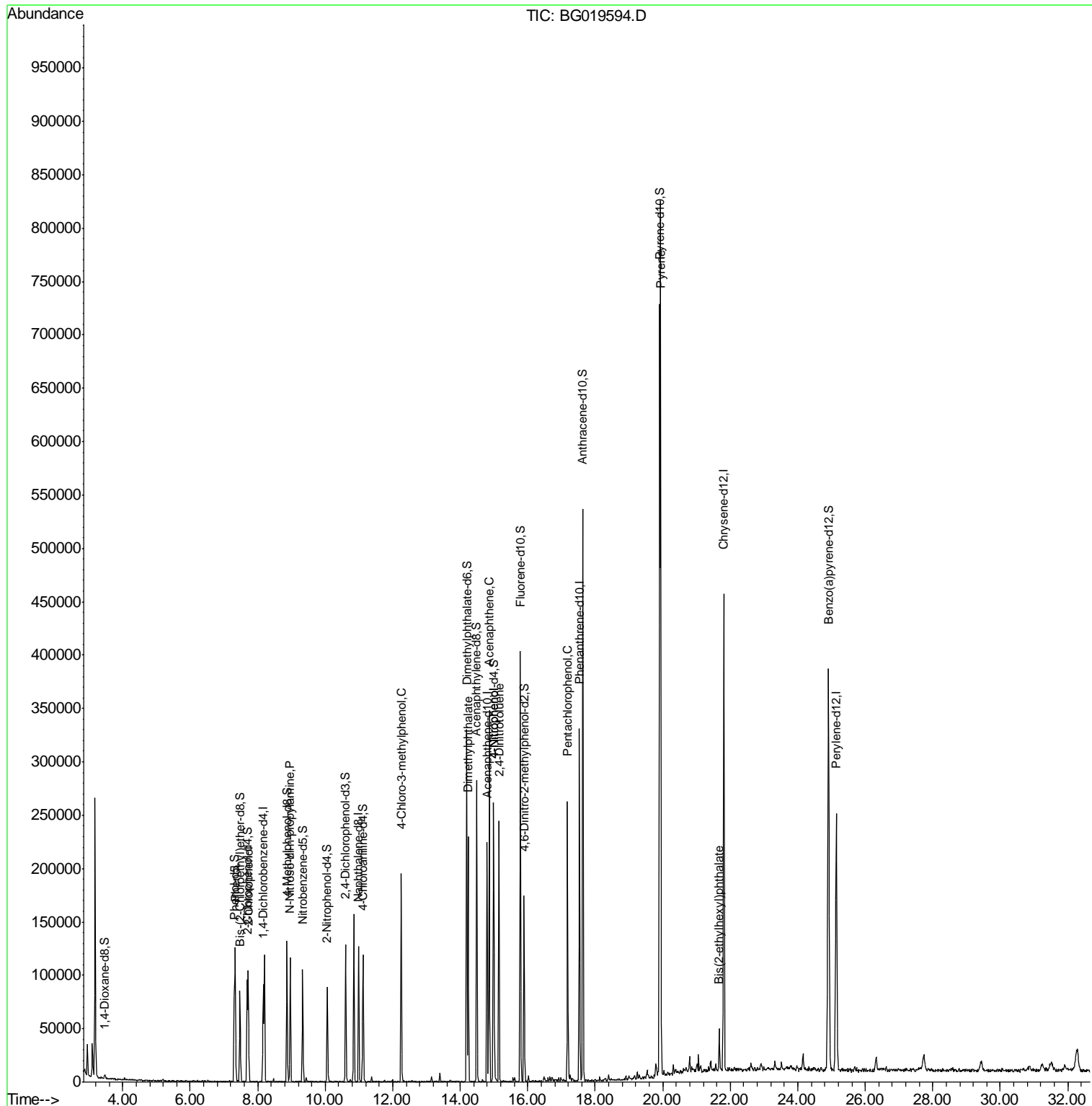
Target Compounds	R.T.	QIon	Response	Conc	Units	Ovalue
6) Phenol	7.33	94	68512	30.81	ng/ul	87
10) 2-Chlorophenol	7.72	128	38486	28.69	ng/ul	97
15) N-Nitroso-di-n-propylamine	8.97	70	57088	31.20	ng/ul#	90
33) 4-Chloro-3-methylphenol	12.25	107	68738	29.55	ng/ul	92
45) Dimethylphthalate	14.24	163	132432	20.97	ng/ul	98
50) Acenaphthene	14.86	153	139234	29.44	ng/ul	98
53) 4-Nitrophenol	14.99	109	42234	27.61	ng/ul#	61
55) 2,4-Dinitrotoluene	15.15	165	60844	30.14	ng/ul#	84
69) Pentachlorophenol	17.18	266	45659	28.96	ng/ul	97
80) Pyrene	19.93	202	501728	31.95	ng/ul#	90
84) Bis(2-ethylhexyl)phthalate	21.67	149	15646	2.16	ng/ul#	97

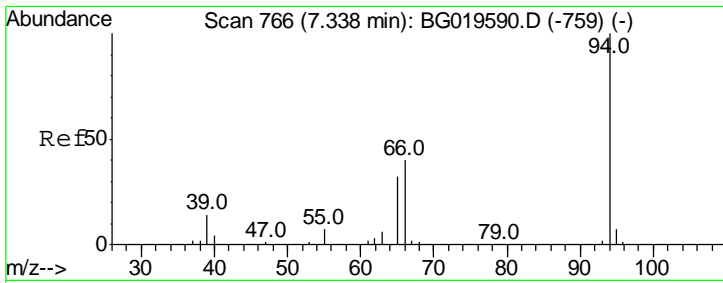
(#) = qualifier out of range (m) = manual integration (+) = signals summed

Data Path : Z:\HPCHEM1\BNA G\DATA\BG111315\  
 Data File : BG019594.D  
 Acq On : 13 Nov 2015 16:27  
 Operator : UM/NP  
 Sample : G4342-07MS  
 Misc :  
 ALS Vial : 6 Sample Multiplier: 1

Instrument :  
 BNA\_G  
 ClientSampleId :  
 D9KP7MS

Quant Time: Nov 14 00:24:34 2015  
 Quant Method : Z:\HPCHEM1\BNA G\METHODS\SOM02.2-EPA-BG102815.M  
 Quant Title : SVOA CALIBRATION  
 QLast Update : Sat Nov 14 00:06:36 2015  
 Response via : Initial Calibration

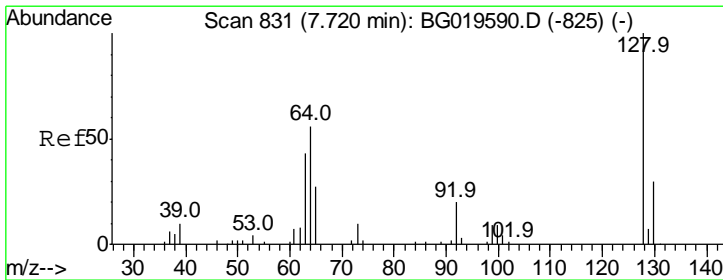
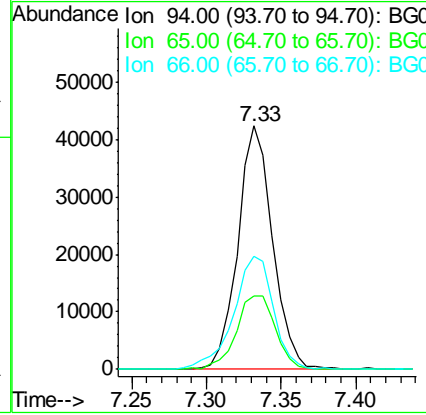
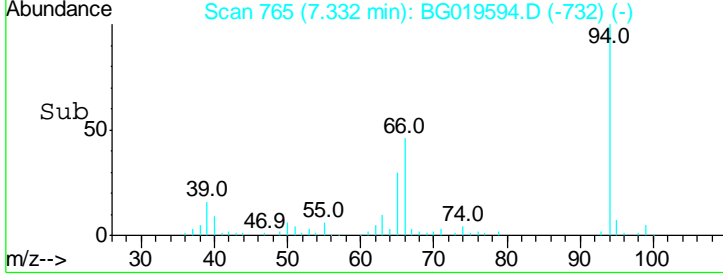
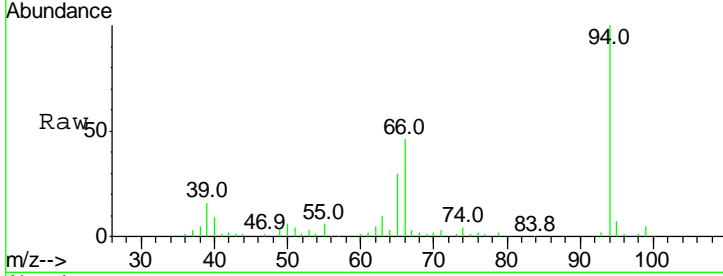




#6  
 Phenol  
 Concen: 30.81 ng/ul  
 RT: 7.33 min Scan# 765  
 Delta R.T. -0.01 min  
 Lab File: BG019594.D  
 Acq: 13 Nov 2015 16:27

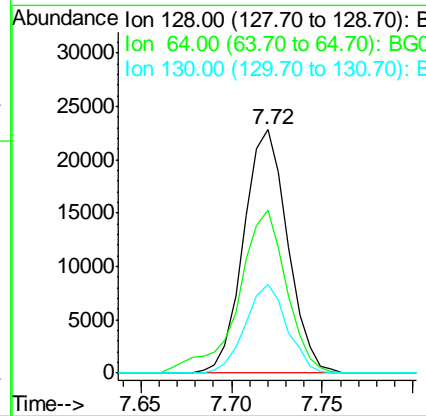
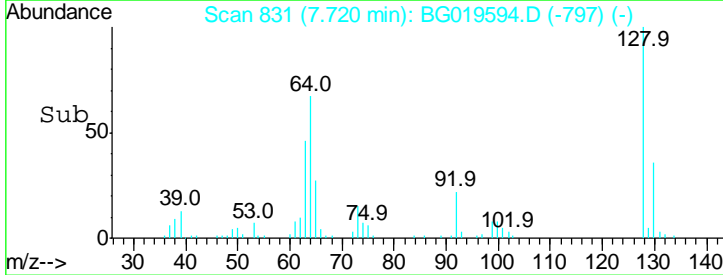
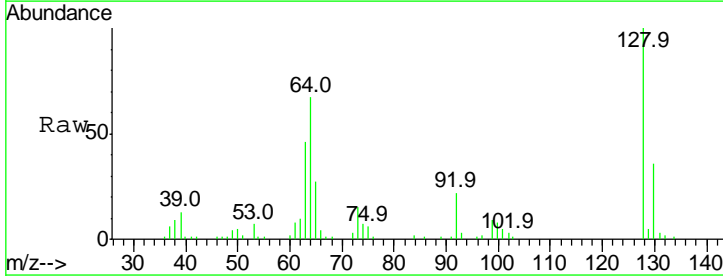
Instrument :  
 BNA\_G  
 ClientSampled :  
 D9KP7MS

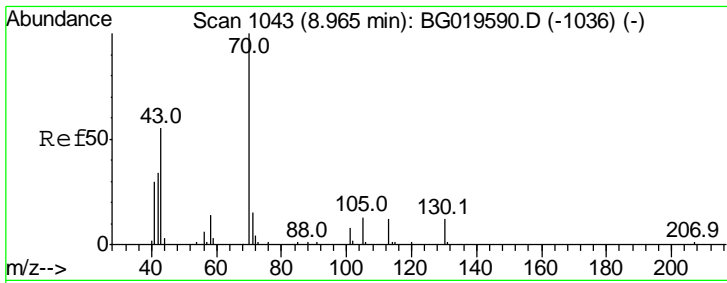
Tgt Ion	Resp	Lower	Upper
94	68512		
65	30.2	29.3	43.9
66	46.2	45.0	67.6



#10  
 2-Chlorophenol  
 Concen: 28.69 ng/ul  
 RT: 7.72 min Scan# 831  
 Delta R.T. 0.00 min  
 Lab File: BG019594.D  
 Acq: 13 Nov 2015 16:27

Tgt Ion	Resp	Lower	Upper
128	38486		
64	67.1	53.2	79.8
130	36.4	25.9	38.9

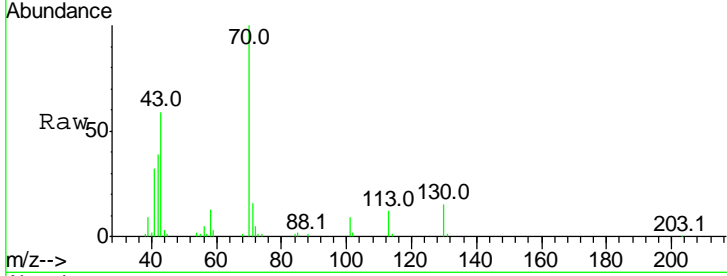




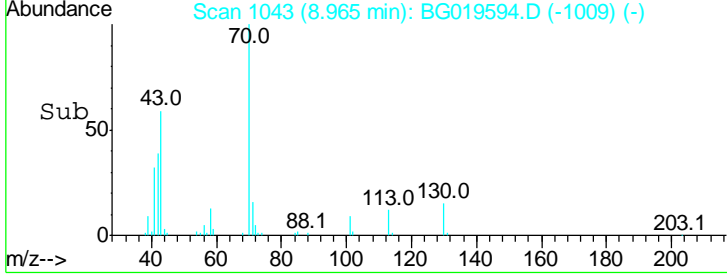
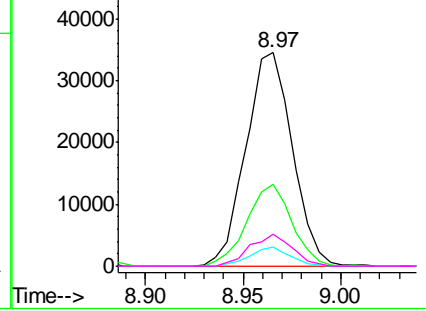
#15  
 N-Nitroso-di-n-propylamine  
 Concen: 31.20 ng/ul  
 RT: 8.97 min Scan# 1043  
 Delta R.T. 0.00 min  
 Lab File: BG019594.D  
 Acq: 13 Nov 2015 16:27

**Instrument :**  
 BNA\_G  
**ClientSampled :**  
 D9KP7MS

Tgt Ion	Resp	Lower	Upper
70	100		
42	38.5	36.6	55.0
101	9.2	5.8	8.8#
130	14.7	14.6	22.0

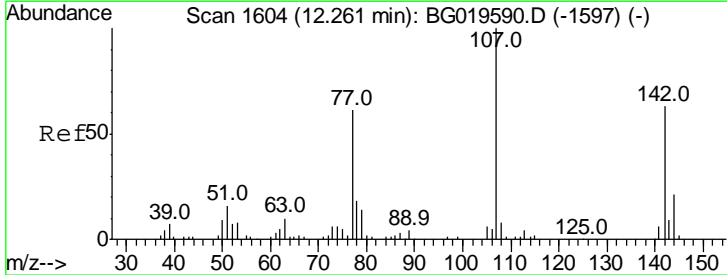


Abundance Ion 70.00 (69.70 to 70.70): BGC  
 Ion 42.00 (41.70 to 42.70): BGC  
 Ion 101.00 (100.70 to 101.70): BGC  
 Ion 130.00 (129.70 to 130.70): BGC

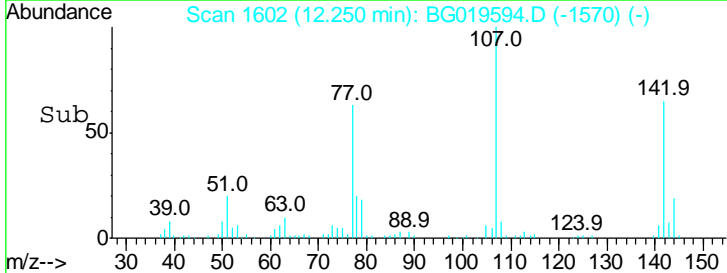
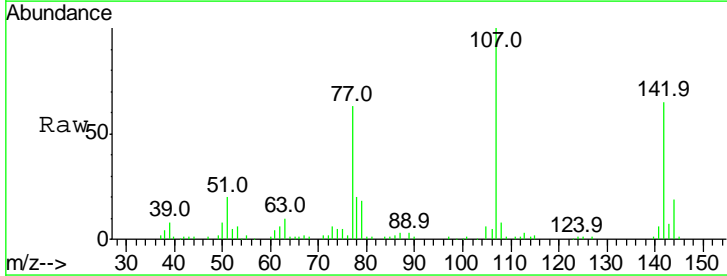
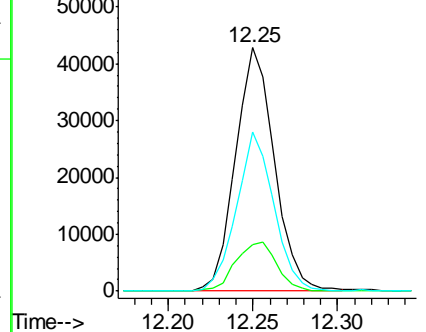


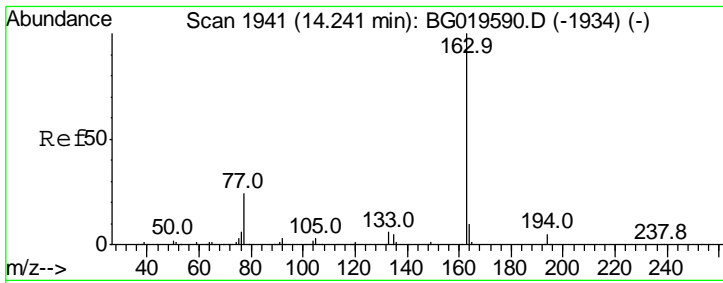
#33  
 4-Chloro-3-methylphenol  
 Concen: 29.55 ng/ul  
 RT: 12.25 min Scan# 1602  
 Delta R.T. -0.01 min  
 Lab File: BG019594.D  
 Acq: 13 Nov 2015 16:27

Tgt Ion	Resp	Lower	Upper
107	100		
144	19.1	13.0	19.6
142	65.3	47.0	70.6



Abundance Ion 107.00 (106.70 to 107.70): BGC  
 Ion 144.00 (143.70 to 144.70): BGC  
 Ion 142.00 (141.70 to 142.70): BGC



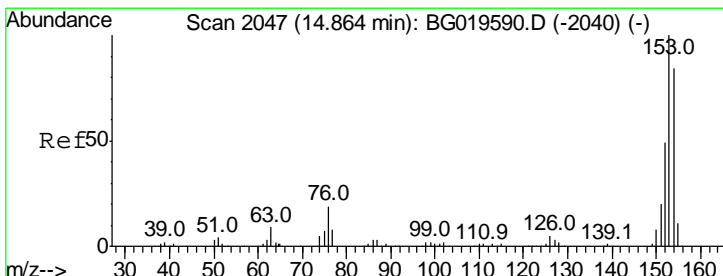
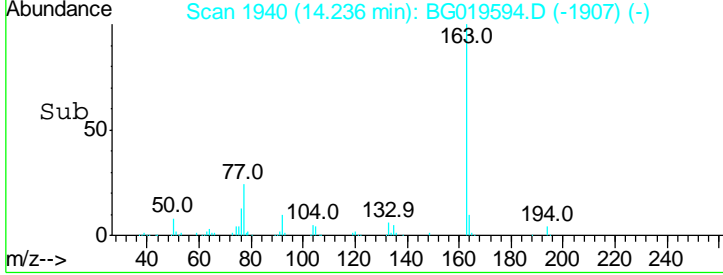
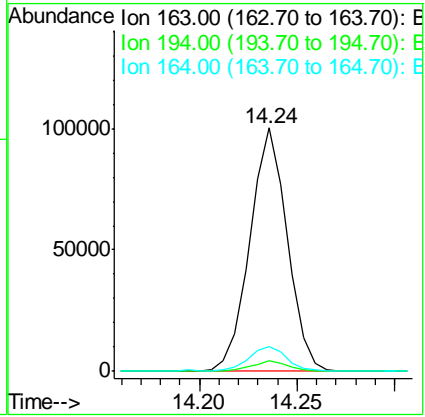
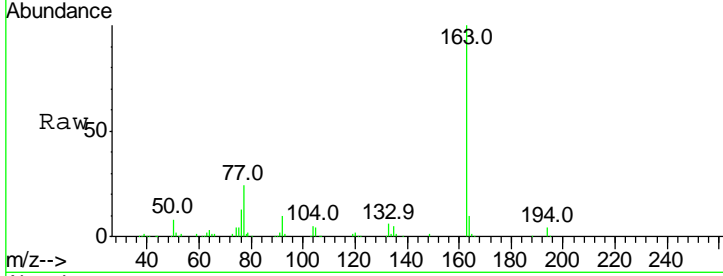


#45  
 Dimethylphthalate  
 Concen: 20.97 ng/ul  
 RT: 14.24 min Scan# 1940  
 Delta R.T. -0.01 min  
 Lab File: BG019594.D  
 Acq: 13 Nov 2015 16:27

Instrument :  
 BNA\_G  
 ClientSampled :  
 D9KP7MS

Tgt Ion: 163 Resp: 132432

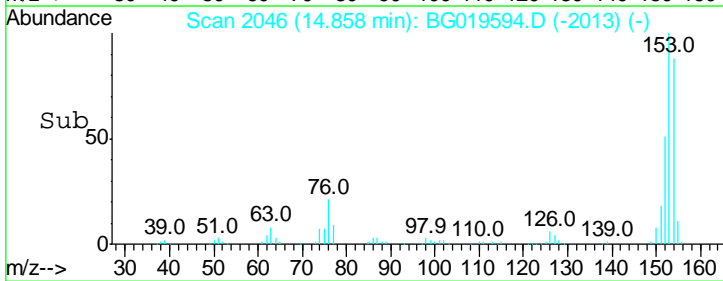
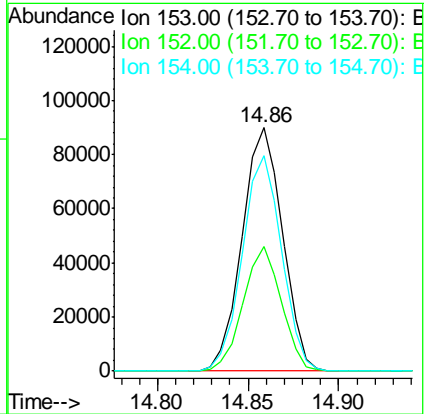
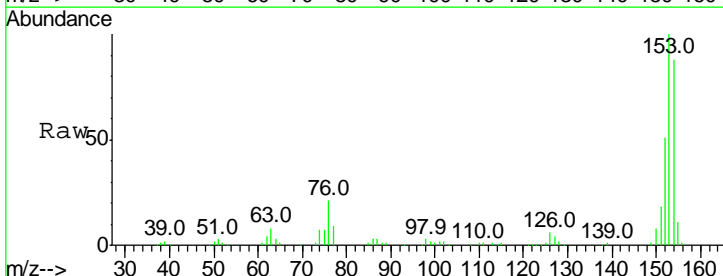
Ion	Ratio	Lower	Upper
163	100		
194	4.4	4.3	6.5
164	9.9	7.5	11.3

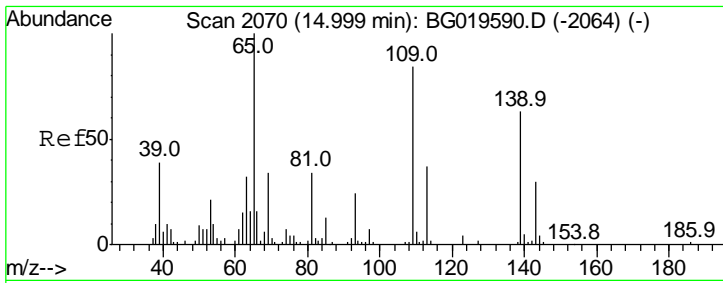


#50  
 Acenaphthene  
 Concen: 29.44 ng/ul  
 RT: 14.86 min Scan# 2046  
 Delta R.T. -0.01 min  
 Lab File: BG019594.D  
 Acq: 13 Nov 2015 16:27

Tgt Ion: 153 Resp: 139234

Ion	Ratio	Lower	Upper
153	100		
152	51.0	38.8	58.2
154	88.4	71.5	107.3

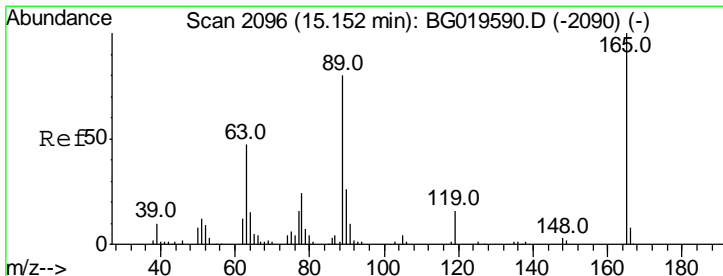
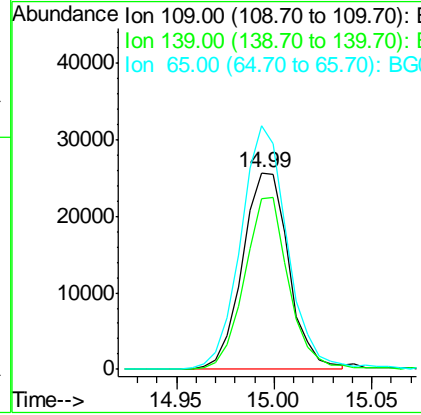
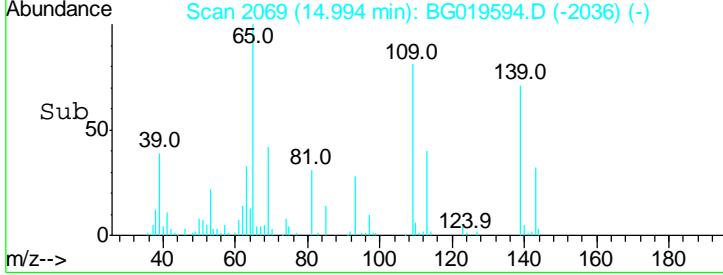
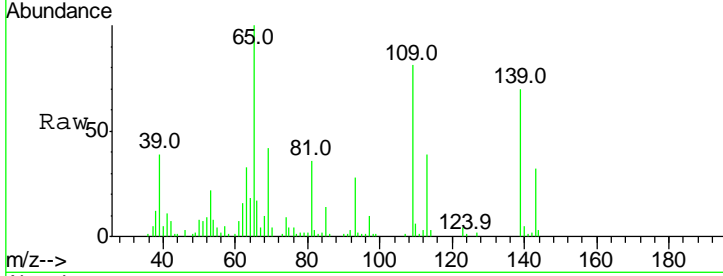




#53  
 4-Nitrophenol  
 Concen: 27.61 ng/ul  
 RT: 14.99 min Scan# 2069  
 Delta R.T. -0.01 min  
 Lab File: BG019594.D  
 Acq: 13 Nov 2015 16:27

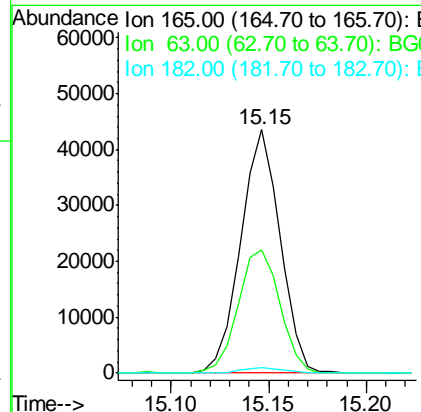
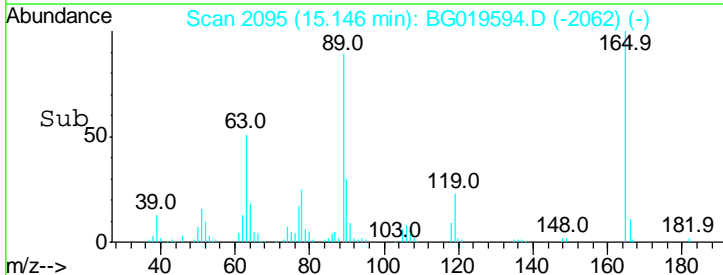
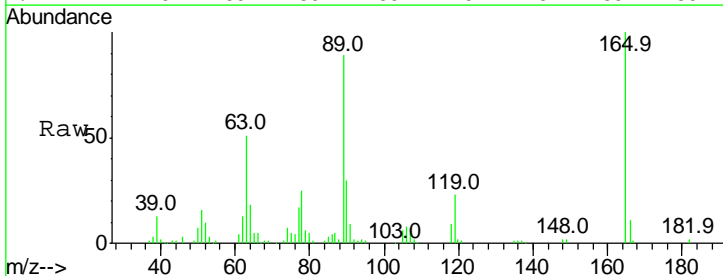
**Instrument :**  
 BNA\_G  
**ClientSampled :**  
 D9KP7MS

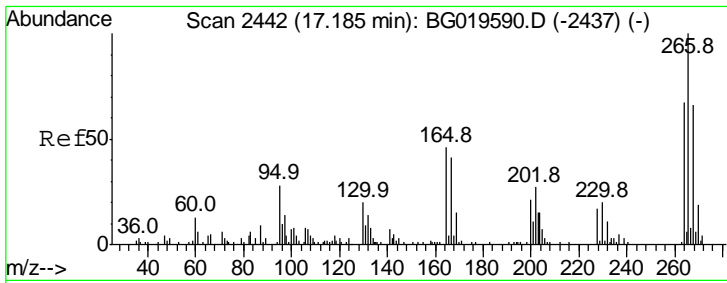
Tgt Ion	Resp	Lower	Upper
109	42234		
109	100		
139	86.6	41.5	62.3#
65	123.7	73.7	110.5#



#55  
 2,4-Dinitrotoluene  
 Concen: 30.14 ng/ul  
 RT: 15.15 min Scan# 2095  
 Delta R.T. -0.01 min  
 Lab File: BG019594.D  
 Acq: 13 Nov 2015 16:27

Tgt Ion	Resp	Lower	Upper
165	60844		
165	100		
63	50.7	51.1	76.7#
182	2.1	3.3	4.9#

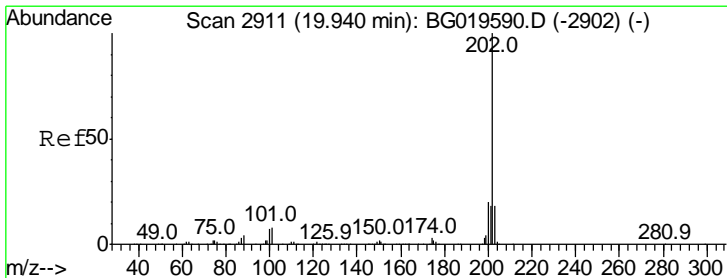
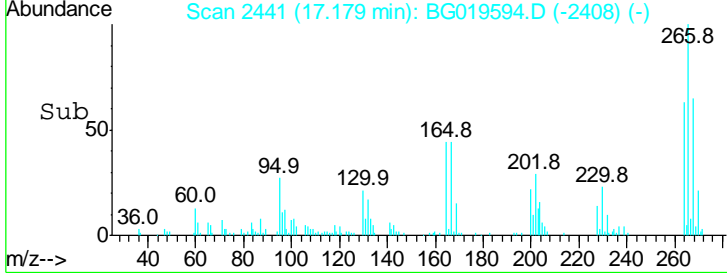
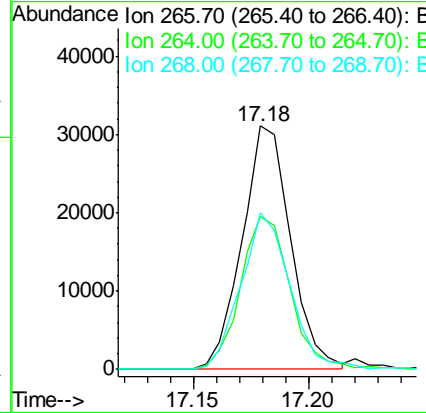
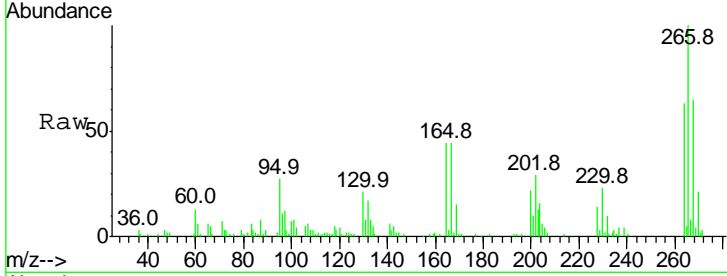




#69  
 Pentachlorophenol  
 Concen: 28.96 ng/ul  
 RT: 17.18 min Scan# 2441  
 Delta R.T. -0.01 min  
 Lab File: BG019594.D  
 Acq: 13 Nov 2015 16:27

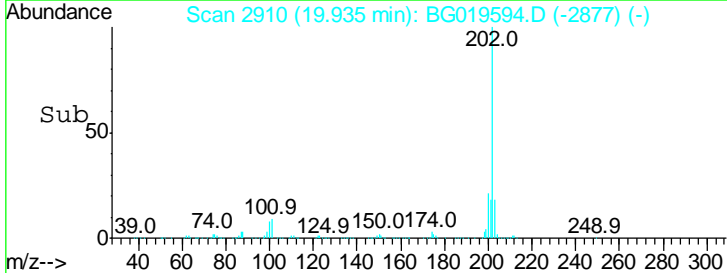
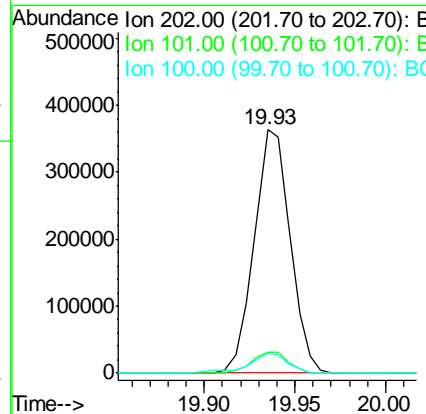
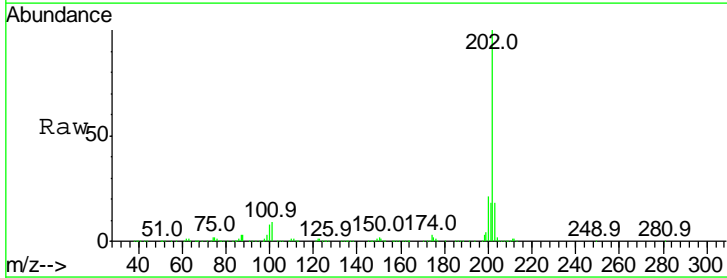
Instrument :  
 BNA\_G  
 ClientSampled :  
 D9KP7MS

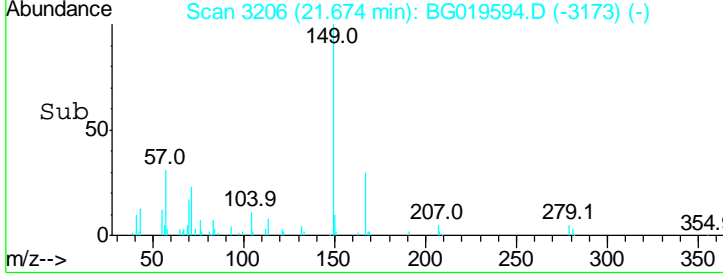
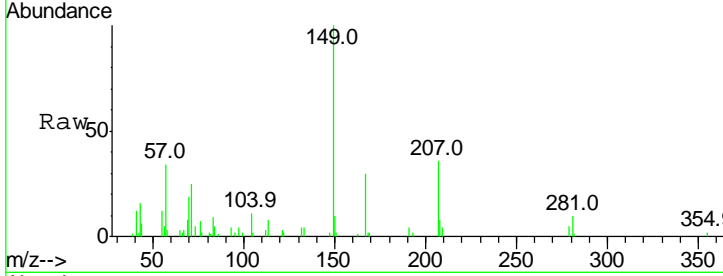
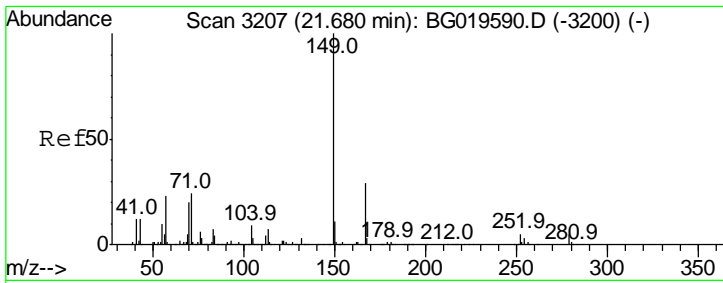
Tgt Ion	Resp	Lower	Upper
266	100		
264	62.5	49.5	74.3
268	64.5	48.7	73.1



#80  
 Pyrene  
 Concen: 31.95 ng/ul  
 RT: 19.93 min Scan# 2910  
 Delta R.T. -0.01 min  
 Lab File: BG019594.D  
 Acq: 13 Nov 2015 16:27

Tgt Ion	Resp	Lower	Upper
202	100		
101	8.8	4.3	6.5#
100	7.8	3.6	5.4#





#84  
 Bis(2-ethylhexyl)phthalate  
 Concen: 2.16 ng/ul  
 RT: 21.67 min Scan# 3206  
 Delta R.T. -0.01 min  
 Lab File: BG019594.D  
 Acq: 13 Nov 2015 16:27

Instrument :  
 BNA\_G  
 ClientSampleId :  
 D9KP7MS

Tot Ion	Ratio	Lower	Upper
149	100		
167	30.4	23.2	34.8
279	4.5	5.0	7.4#

