

Data Path : Z:\HPCHEM1\BNA G\DATA\BG111515\
 Data File : BG019613.D
 Acq On : 15 Nov 2015 13:56
 Operator : UM/NP
 Sample : G4401-04
 Misc :
 ALS Vial : 7 Sample Multiplier: 1

Instrument :
 BNA_G
 ClientSampleId :

Quant Time: Nov 16 02:29:13 2015
 Quant Method : Z:\HPCHEM1\BNA G\METHODS\SOM02.2-EPA-BG102815.M
 Quant Title : SVOA CALIBRATION
 QLast Update : Mon Nov 16 02:26:38 2015
 Response via : Initial Calibration

Internal Standards	R.T.	QIon	Response	Conc	Units	Dev(Min)
1) 1,4-Dichlorobenzene-d4	8.16	152	25651	20.00	ng/ul	0.00
18) Naphthalene-d8	10.99	136	104820	20.00	ng/ul	0.00
36) Acenaphthene-d10	14.79	164	85825	20.00	ng/ul	0.00
62) Phenanthrene-d10	17.53	188	238038	20.00	ng/ul	0.00
78) Chrysene-d12	21.80	240	302398	20.00	ng/ul	0.00
86) Perylene-d12	25.14	264	280285	20.00	ng/ul	0.00

System Monitoring Compounds

3) 1,4-Dioxane-d8	3.45	96	2682	5.01	ng/uL	0.00
5) Phenol-d5	7.30	99	63671	27.04	ng/ul	0.00
7) Bis-(2-Chloroethyl)ether-d	7.47	67	43604	29.21	ng/ul	0.00
9) 2-Chlorophenol-d4	7.69	132	39692	27.00	ng/ul	0.00
13) 4-Methylphenol-d8	8.86	113	52032	27.74	ng/ul	0.00
19) Nitrobenzene-d5	9.33	128	21966	28.51	ng/ul	0.00
22) 2-Nitrophenol-d4	10.06	143	24392	26.67	ng/ul	0.00
26) 2,4-Dichlorophenol-d3	10.60	165	51944	26.18	ng/ul	0.00
29) 4-Chloroaniline-d4	11.12	131	57352	28.58	ng/ul	0.00
44) Dimethylphthalate-d6	14.18	166	206322	29.16	ng/ul	0.00
47) Acenaphthylene-d8	14.49	160	195010	24.88	ng/ul	0.00
52) 4-Nitrophenol-d4	14.98	143	27290	24.28	ng/ul	0.00
58) Fluorene-d10	15.78	176	151405	23.13	ng/ul	0.00
63) 4,6-Dinitro-2-methylphenol	15.89	200	28400	18.43	ng/ul	0.00
71) Anthracene-d10	17.63	188	258533	23.83	ng/ul	0.00
79) Pyrene-d10	19.91	212	258481	19.53	ng/ul	0.00
90) Benzo(a)pyrene-d12	24.89	264	235663	16.75	ng/ul	0.00

Target Compounds

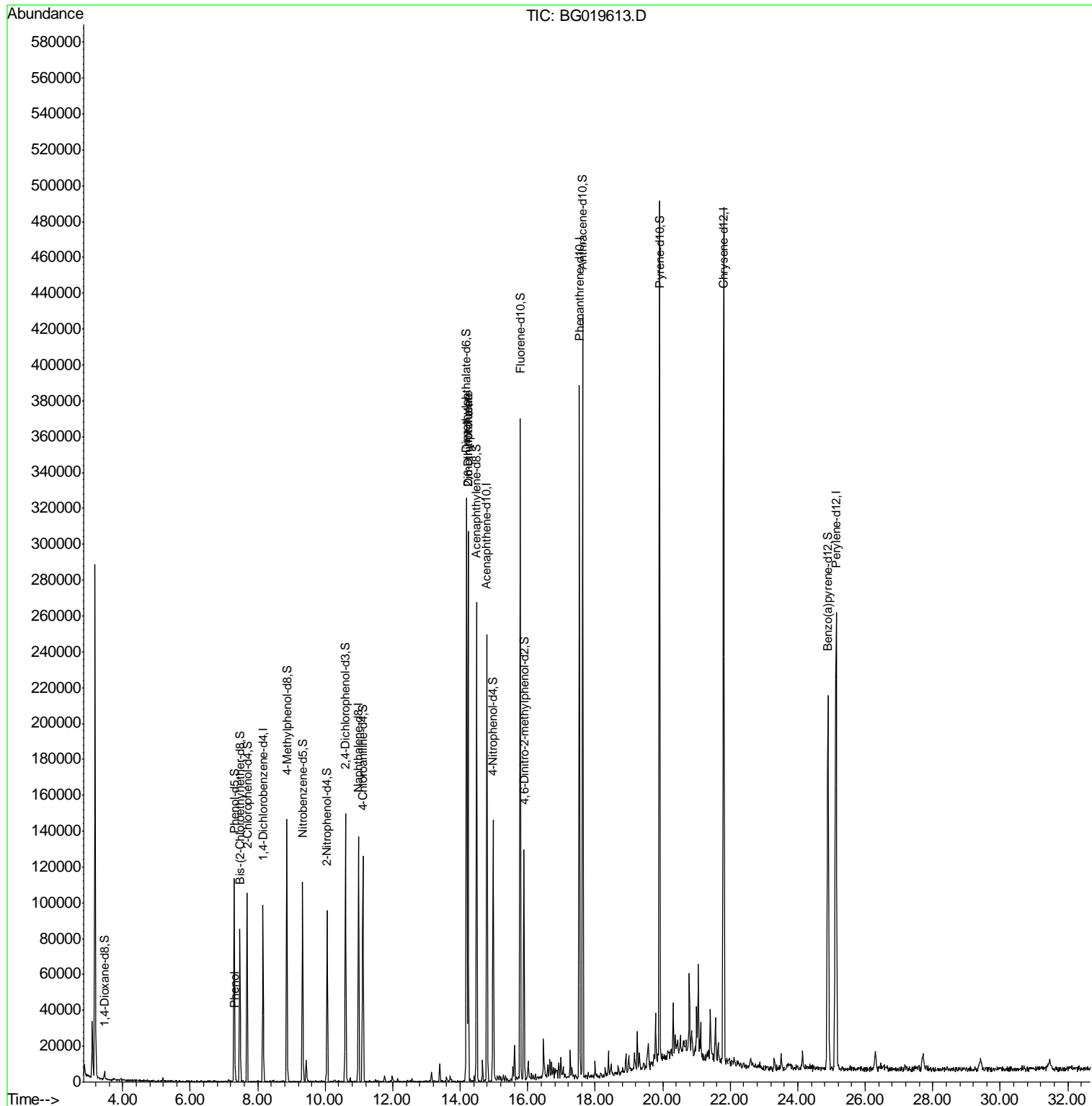
					Ovalue
6) Phenol	7.33	94	3439	1.37	ng/ul 96
45) Dimethylphthalate	14.23	163	180203	24.90	ng/ul# 99
46) 2,6-Dinitrotoluene	14.23	165	1971	1.35	ng/ul# 37

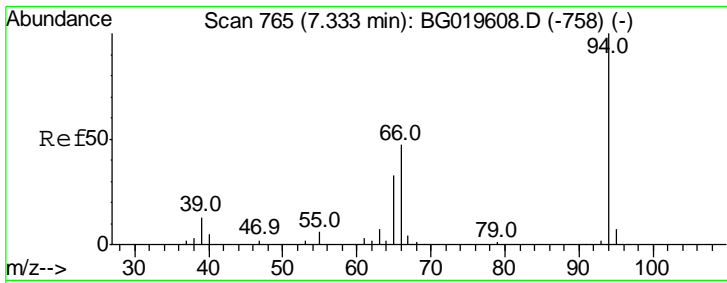
(#) = qualifier out of range (m) = manual integration (+) = signals summed

Data Path : Z:\HPCHEM1\BNA G\DATA\BG111515\
 Data File : BG019613.D
 Acq On : 15 Nov 2015 13:56
 Operator : UM/NP
 Sample : G4401-04
 Misc :
 ALS Vial : 7 Sample Multiplier: 1

Instrument :
 BNA_G
 Client Sampled :

Quant Time: Nov 16 02:29:13 2015
 Quant Method : Z:\HPCHEM1\BNA G\METHODS\SOM02.2-EPA-BG102815.M
 Quant Title : SVOA CALIBRATION
 QLast Update : Mon Nov 16 02:26:38 2015
 Response via : Initial Calibration

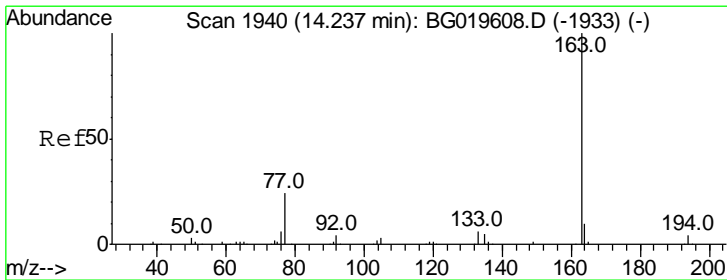
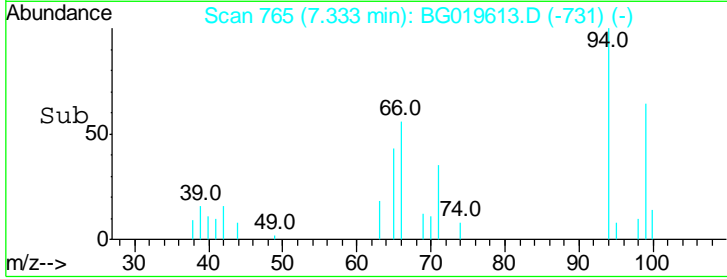
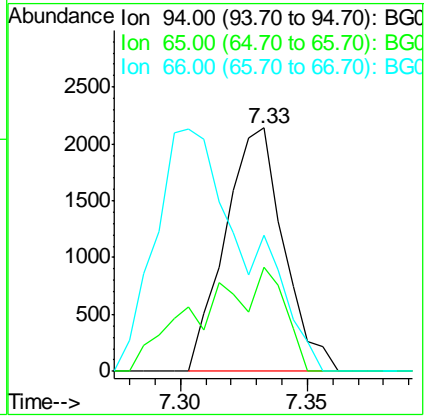
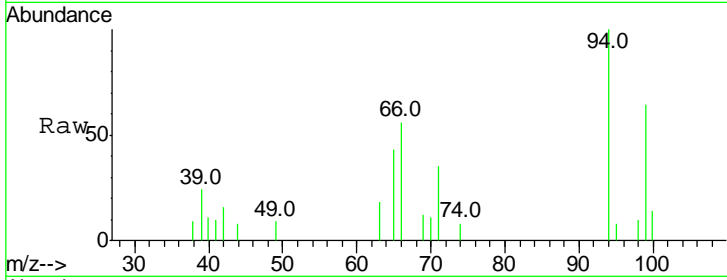




#6
 Phenol
 Concen: 1.37 ng/ul
 RT: 7.33 min Scan# 765
 Delta R.T. -0.00 min
 Lab File: BG019613.D
 Acq: 15 Nov 2015 13:56

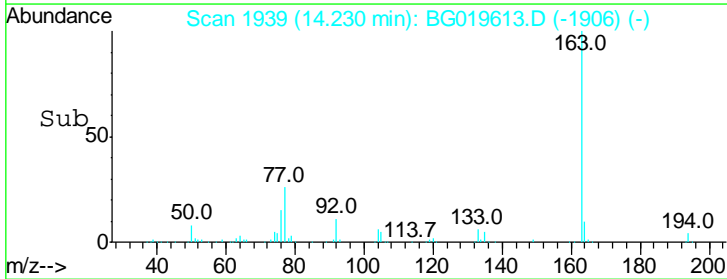
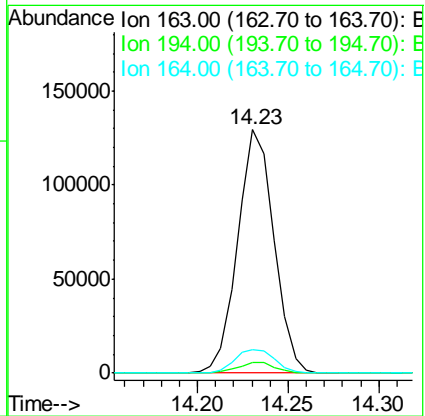
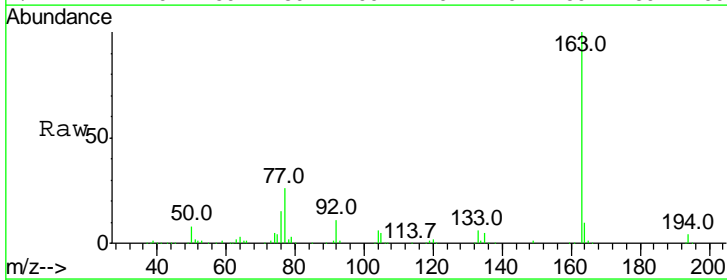
Instrument :
 BNA_G
 ClientSampled :

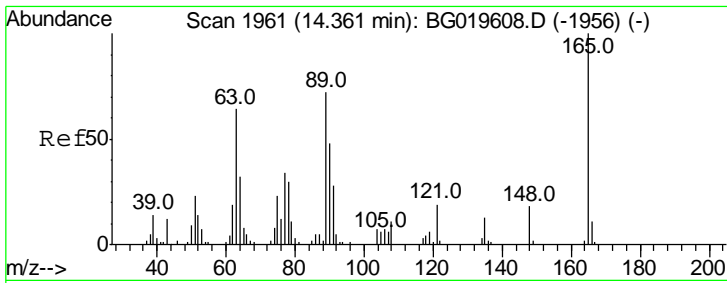
Tgt Ion	Resp	Lower	Upper
94	100		
65	42.8	29.3	43.9
66	56.0	45.0	67.6



#45
 Dimethylphthalate
 Concen: 24.90 ng/ul
 RT: 14.23 min Scan# 1939
 Delta R.T. -0.01 min
 Lab File: BG019613.D
 Acq: 15 Nov 2015 13:56

Tgt Ion	Resp	Lower	Upper
163	100		
194	4.3	4.3	6.5#
164	9.5	7.5	11.3





#46
 2,6-Dinitrotoluene
 Concen: 1.35 ng/ul
 RT: 14.23 min Scan# 1939
 Delta R.T. -0.13 min
 Lab File: BG019613.D
 Acq: 15 Nov 2015 13:56

Instrument :
 BNA_G
 ClientSampled :

Tot Ion	Ratio	Lower	Upper
165	100		
89	12.0	66.7	100.1#
121	20.4	17.0	25.4

