

Data Path : Z:\HPCHEM1\BNA_G\DATA\BG111515\
 Data File : BG019609.D
 Acq On : 15 Nov 2015 11:23
 Operator : UM/NP
 Sample : PB86650BL
 Misc :
 ALS Vial : 3 Sample Multiplier: 1

Instrument :
 BNA_G
 ClientSampleId :
 SBLK50

Integration Parameters: LSCINT.P

Integrator: RTE
 Smoothing : OFF
 Sampling : 1
 Start Thrs: 0.2
 Stop Thrs : 0

Filtering: 5
 Min Area: 0.1 % of largest Peak
 Max Peaks: 100
 Peak Location: TOP

If leading or trailing edge < 100 prefer < Baseline drop else tangent >
 Peak separation: 5

Method : Z:\HPCHEM1\BNA_G\METHODS\SOM02.2-EPA-BG102815.M
 Title : SVOA CALIBRATION

Signal : TIC

peak #	R.T. min	first scan	max scan	last scan	PK TY	peak height	corr. area	corr. % max.	% of total
1	2.950	16	19	21	rBV2	2668	2728	0.26%	0.028%
2	3.097	39	44	51	rBV3	17923	33641	3.27%	0.343%
3	3.179	53	58	68	rVB	73104	103098	10.01%	1.052%
4	3.455	101	105	109	rBV2	6229	7050	0.68%	0.072%
5	4.225	233	236	240	rVB2	841	1548	0.15%	0.016%
6	4.507	278	284	286	rBV2	847	1737	0.17%	0.018%
7	7.304	750	760	767	rBV	116103	192324	18.68%	1.962%
8	7.468	781	788	796	rBV	93975	150458	14.61%	1.535%
9	7.685	817	825	832	rVB	106730	182209	17.69%	1.858%
10	8.156	898	905	913	rBB	100379	167680	16.28%	1.710%
11	8.861	1018	1025	1034	rBB2	145459	244081	23.70%	2.489%
12	9.331	1098	1105	1114	rBB	115150	202143	19.63%	2.062%
13	10.059	1222	1229	1236	rBV	96618	174201	16.92%	1.777%
14	10.600	1315	1321	1332	rVB	148297	253077	24.57%	2.581%
15	10.987	1379	1387	1394	rBV	144638	252647	24.53%	2.577%
16	11.117	1402	1409	1423	rVB	146023	254558	24.72%	2.596%
17	12.556	1651	1654	1655	rBV	1708	1398	0.14%	0.014%
18	14.184	1925	1931	1938	rVB	323181	455780	44.26%	4.649%
19	14.489	1976	1983	1992	rVB	315497	484826	47.08%	4.945%
20	14.795	2026	2035	2043	rBV2	251108	417325	40.52%	4.256%
21	14.977	2060	2066	2079	rBV	160810	255602	24.82%	2.607%
22	15.776	2196	2202	2210	rVB	442726	656541	63.75%	6.696%
23	15.888	2215	2221	2230	rVV	162026	233025	22.63%	2.377%
24	16.017	2237	2243	2248	rVB2	4499	6182	0.60%	0.063%
25	17.309	2459	2463	2467	rVB2	1764	2395	0.23%	0.024%
26	17.533	2494	2501	2510	rVB	394869	602492	58.50%	6.145%
27	17.627	2510	2517	2524	rBV2	522903	798368	77.52%	8.143%
28	18.467	2657	2660	2666	rBV3	2639	3682	0.36%	0.038%
29	18.984	2743	2748	2749	rBV2	1052	1410	0.14%	0.014%
30	19.536	2838	2842	2847	rVB	6739	7345	0.71%	0.075%
31	19.795	2882	2886	2889	rVB2	5271	6443	0.63%	0.066%
32	19.906	2898	2905	2911	rBV	724330	1029825	100.00%	10.503%
33	20.294	2966	2971	2973	rBV3	1146	2084	0.20%	0.021%
34	20.329	2973	2977	2978	rBV2	1558	1569	0.15%	0.016%

Data Path : Z:\HPCHEM1\BNA_G\DATA\BG111515\
 Data File : BG019609.D
 Acq On : 15 Nov 2015 11:23
 Operator : UM/NP
 Sample : PB86650BL
 Misc :
 ALS Vial : 3 Sample Multiplier: 1

Instrument :
 BNA_G
 ClientSampleId :
 SBLK50

Integration Parameters: LSCINT.P
 Integrator: RTE
 Smoothing : OFF Filtering: 5
 Sampling : 1 Min Area: 0.1 % of largest Peak
 Start Thrs: 0.2 Max Peaks: 100
 Stop Thrs : 0 Peak Location: TOP

If leading or trailing edge < 100 prefer < Baseline drop else tangent >
 Peak separation: 5

Method : Z:\HPCHEM1\BNA_G\METHODS\SOM02.2-EPA-BG102815.M
 Title : SVOA CALIBRATION

35	20.447	2995	2997	3001	rBV4	1352	1714	0.17%	0.017%
36	20.482	3001	3003	3006	rBV4	1820	2020	0.20%	0.021%
37	20.541	3009	3013	3014	rBV3	3280	3507	0.34%	0.036%
38	20.570	3014	3018	3021	rVV5	3949	6166	0.60%	0.063%
39	20.635	3025	3029	3033	rVB7	7409	12814	1.24%	0.131%
40	20.782	3053	3054	3056	rBV2	2104	1771	0.17%	0.018%
41	21.698	3208	3210	3211	rBV2	2378	1695	0.16%	0.017%
42	21.804	3221	3228	3236	rBV	482951	793836	77.08%	8.097%
43	23.972	3591	3597	3604	rVB6	5427	13337	1.30%	0.136%
44	24.248	3642	3644	3649	rVB6	2877	5113	0.50%	0.052%
45	24.901	3743	3755	3766	rBV	369158	1017794	98.83%	10.381%
46	25.130	3784	3794	3810	rVB	262214	747759	72.61%	7.627%
47	27.045	4118	4120	4122	rBV3	2233	2082	0.20%	0.021%
48	28.232	4316	4322	4323	rBV3	2643	3784	0.37%	0.039%
49	31.969	4956	4958	4961	rBV4	2541	1754	0.17%	0.018%

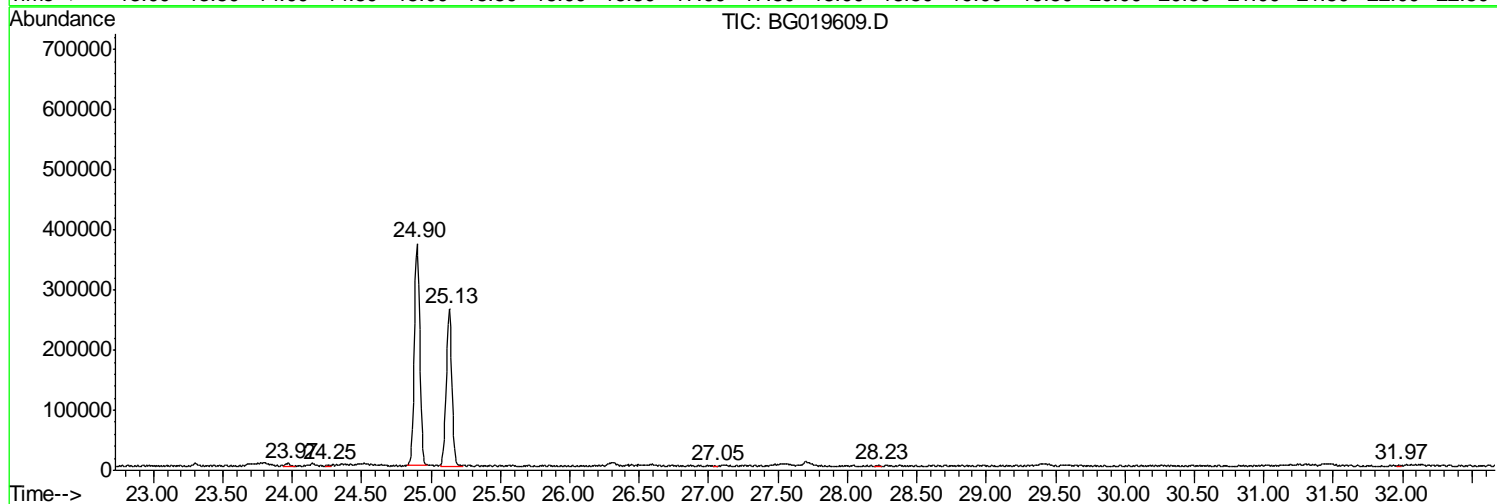
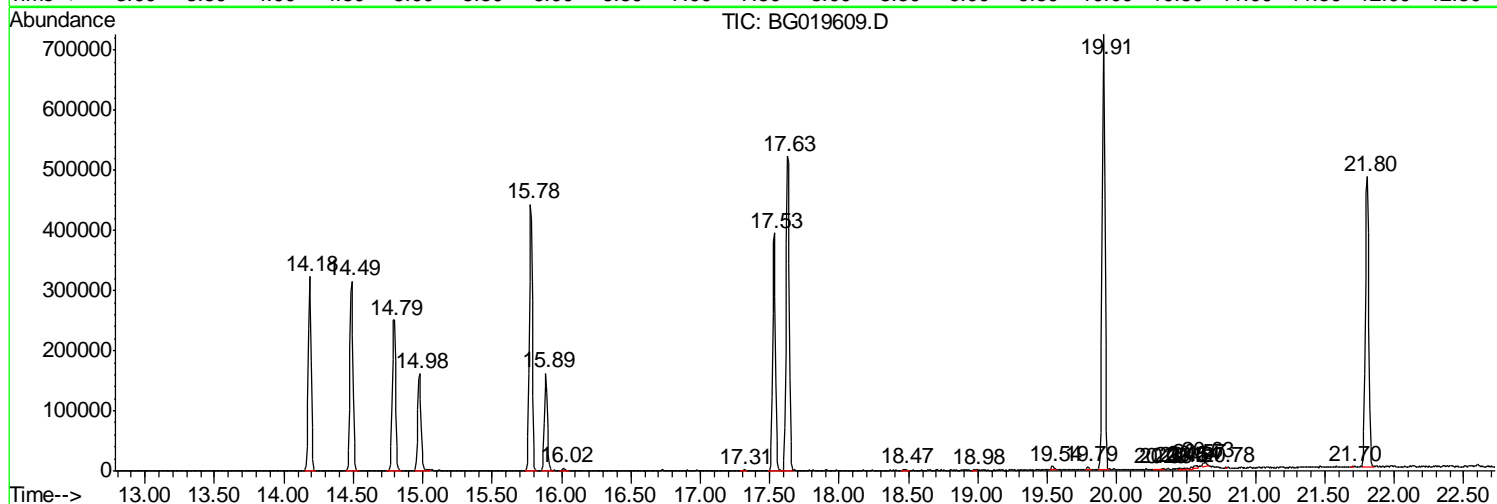
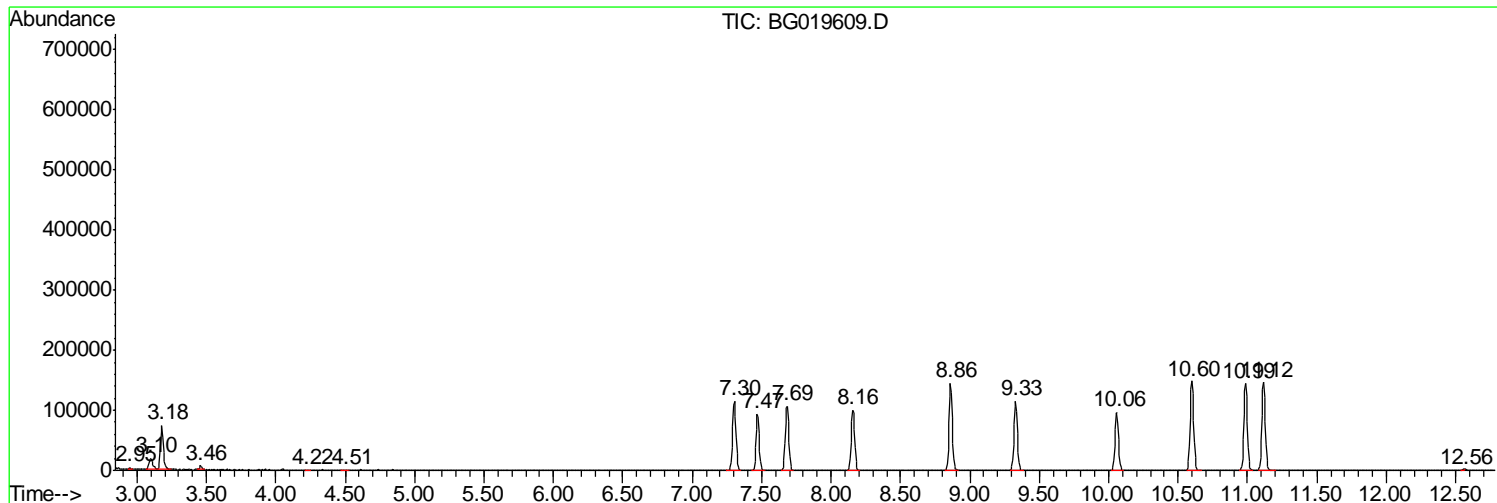
Sum of corrected areas: 9804618

Data Path : Z:\HPCHEM1\BNA_G\DATA\BG111515\
 Data File : BG019609.D
 Acq On : 15 Nov 2015 11:23
 Operator : UM/NP
 Sample : PB86650BL
 Misc :
 ALS Vial : 3 Sample Multiplier: 1

Instrument :
 BNA_G
 ClientSampleId :
 SBLK50

Quant Method : Z:\HPCHEM1\BNA_G\METHODS\SOM02.2-EPA-BG102815.M
 Quant Title : SVOA CALIBRATION

TIC Library : C:\DATABASE\NIST02.L
 TIC Integration Parameters: LSCINT.P



Data Path : Z:\HPCHEM1\BNA_G\DATA\BG111515\
 Data File : BG019609.D
 Acq On : 15 Nov 2015 11:23
 Operator : UM/NP
 Sample : PB86650BL
 Misc :
 ALS Vial : 3 Sample Multiplier: 1

Instrument :
 BNA_G
 ClientSampleID :
 SBLK50

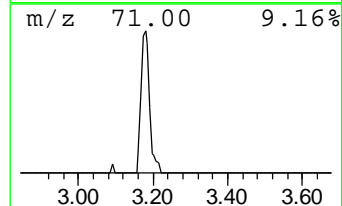
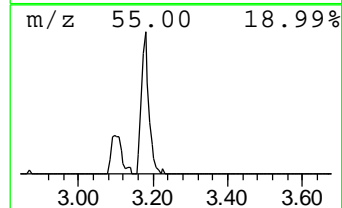
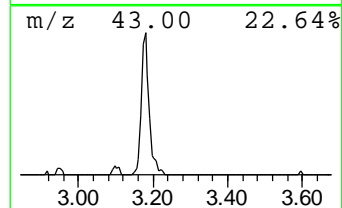
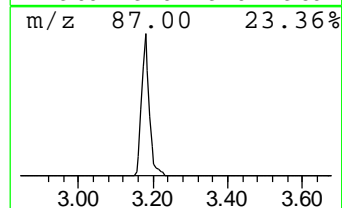
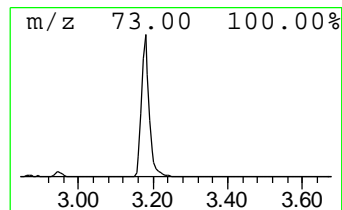
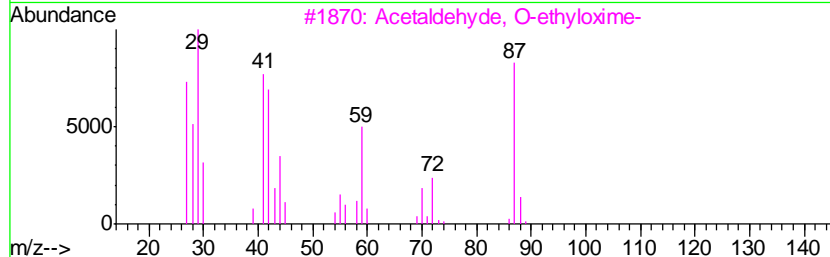
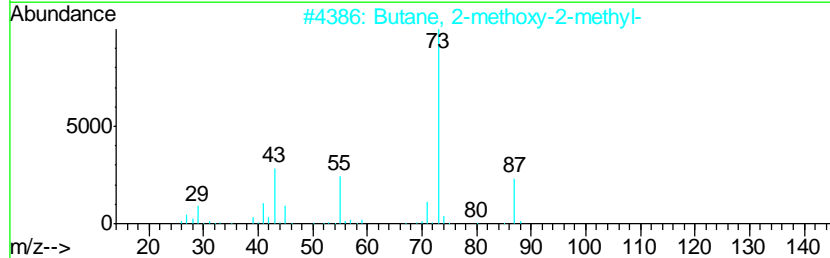
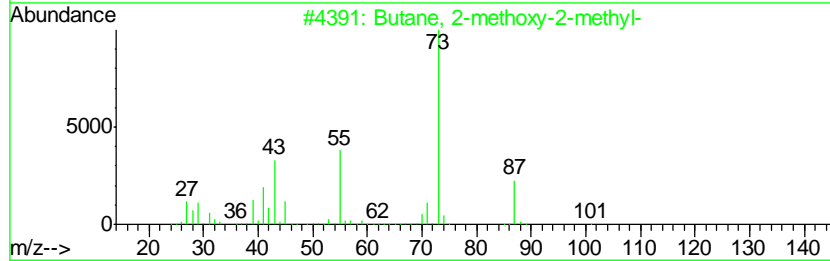
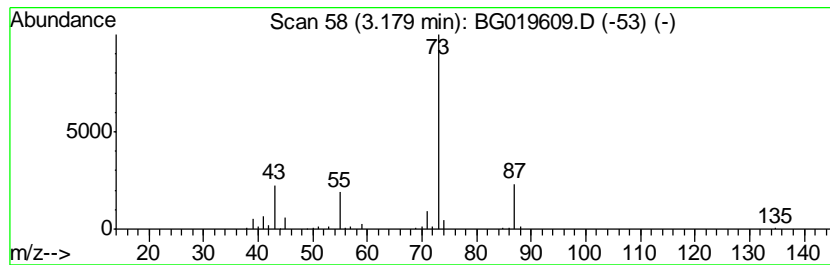
Quant Method : Z:\HPCHEM1\BNA_G\METHODS\SOM02.2-EPA-BG102815.M
 Quant Title : SVOA CALIBRATION

TIC Library : C:\DATABASE\NIST02.L
 TIC Integration Parameters: LSCINT.P

 Peak Number 2 Butane, 2-methoxy-2-methyl- Concentration Rank 1

R.T.	EstConc	Area	Relative to ISTD	R.T.
3.18	12.30 ng/ul	103098	1,4-Dichlorobenzene-d4	8.16

Hit#	of	Tentative ID	MW	MolForm	CAS#	Qual
1	5	Butane, 2-methoxy-2-methyl-	102	C6H14O	000994-05-8	64
2		Butane, 2-methoxy-2-methyl-	102	C6H14O	000994-05-8	47
3		Acetaldehyde, O-ethyloxime-	87	C4H9NO	1000288-34-6	16
4		N-Ethylformamide	73	C3H7NO	000627-45-2	9
5		2,2,4-Trimethyl-3-pentanol	130	C8H18O	005162-48-1	9



Data Path : Z:\HPCHEM1\BNA_G\DATA\BG111515\
Data File : BG019609.D
Acq On : 15 Nov 2015 11:23
Operator : UM/NP
Sample : PB86650BL
Misc :
ALS Vial : 3 Sample Multiplier: 1

Instrument :
BNA_G
ClientSampleId :
SBLK50

Quant Method : Z:\HPCHEM1\BNA_G\METHODS\SOM02.2-EPA-BG102815.M
Quant Title : SVOA CALIBRATION

TIC Library : C:\DATABASE\NIST02.L
TIC Integration Parameters: LSCINT.P

TIC Top Hit name	RT	EstConc	Units	Response	--Internal Standard--			
					#	RT	Resp	Conc
Butane, 2-methoxy...	3.18	12.3	ng/ul	103098	1	8.16	167680	20.0