

Data Path : Z:\HPCHEM1\BNA_G\DATA\BG111516\
 Data File : BG024794.D
 Acq On : 15 Nov 2016 13:11
 Operator : UM/SJ
 Sample : SSTDCCC020
 Misc :
 ALS Vial : 2 Sample Multiplier: 1

Instrument :
 BNA_G
 ClientSampleId :
 SSTD02011

Quant Time: Nov 15 16:43:38 2016
 Quant Method : Z:\HPCHEM1\BNA_G\METHODS\SOM02.2-EPA-BG111416.M
 Quant Title : SVOA CALIBRATION
 QLast Update : Tue Nov 15 15:42:09 2016
 Response via : Initial Calibration

Internal Standards	R.T.	QIon	Response	Conc	Units	Dev(Min)
1) 1,4-Dichlorobenzene-d4	8.26	152	142727	20.00	ng/ul	0.00
18) Naphthalene-d8	11.10	136	581809	20.00	ng/ul	0.01
35) Acenaphthene-d10	14.88	164	491825	20.00	ng/ul	0.00
61) Phenanthrene-d10	17.62	188	1098745	20.00	ng/ul	0.00
75) Chrysene-d12	21.92	240	1389745	20.00	ng/ul	0.00
83) Perylene-d12	25.36	264	1476079	20.00	ng/ul	0.01

System Monitoring Compounds

3) 1,4-Dioxane-d8	3.62	96	24845	9.02	ng/uL	0.00
5) Phenol-d5	7.40	99	247751	20.26	ng/ul	0.00
7) Bis-(2-Chloroethyl)ether-d	7.58	67	158392	20.59	ng/ul	0.00
9) 2-Chlorophenol-d4	7.79	132	181719	20.72	ng/ul	0.00
13) 4-Methylphenol-d8	8.96	113	201582	19.63	ng/ul	0.00
19) Nitrobenzene-d5	9.44	128	91842	20.85	ng/ul	0.00
22) 2-Nitrophenol-d4	10.16	143	108345	20.60	ng/ul	0.00
26) 2,4-Dichlorophenol-d3	10.70	165	211539	20.21	ng/ul	0.00
29) 4-Chloroaniline-d4	11.22	131	254237	21.74	ng/ul	0.00
43) Dimethylphthalate-d6	14.27	166	695652	19.40	ng/ul	0.00
46) Acenaphthylene-d8	14.58	160	780250	19.97	ng/ul	0.00
51) 4-Nitrophenol-d4	15.06	143	118749	18.61	ng/ul	0.00
57) Fluorene-d10	15.87	176	649042	19.23	ng/ul	0.00
62) 4,6-Dinitro-2-methylphenol	15.98	200	157035	20.79	ng/ul	0.00
70) Anthracene-d10	17.72	188	980773	20.21	ng/ul	0.00
76) Pyrene-d10	19.99	212	1243283	20.63	ng/ul	0.00
87) Benzo(a)pyrene-d12	25.11	264	1325208	20.51	ng/ul	0.01

Target Compounds

Target Compounds	R.T.	QIon	Response	Conc	Units	Qvalue
2) 1,4-Dioxane	3.65	88	27090	7.85	ng/uL	91
4) Benzaldehyde	7.39	77	184831	23.47	ng/ul	91
6) Phenol	7.43	94	255848	20.03	ng/ul	92
8) Bis(2-Chloroethyl)ether	7.67	93	182771	20.10	ng/ul	94
10) 2-Chlorophenol	7.82	128	174219	20.54	ng/ul	100
11) 2-Methylphenol	8.69	108	190270	20.33	ng/ul	90
12) 2,2'-oxybis(1-Chloropropan	8.79	45	319500	20.70	ng/ul	98
14) Acetophenone	9.09	105	308478	19.95	ng/ul#	89
15) N-Nitroso-di-n-propylamine	9.06	70	175934	20.02	ng/ul	90
16) 4-Methylphenol	9.02	108	203162	20.07	ng/ul	94
17) Hexachloroethane	9.35	117	81147	20.90	ng/ul	93
20) Nitrobenzene	9.49	77	270900	20.71	ng/ul	92
21) Isophorone	10.00	82	494899	20.29	ng/ul	97
23) 2-Nitrophenol	10.20	139	107734	20.28	ng/ul	88
24) 2,4-Dimethylphenol	10.23	107	260493	20.65	ng/ul	97
25) Bis(2-Chloroethoxy)methane	10.47	93	259134	20.23	ng/ul	95
27) 2,4-Dichlorophenol	10.73	162	203529	20.29	ng/ul	94
28) Naphthalene	11.14	128	577850	20.71	ng/ul	97
30) 4-Chloroaniline	11.25	127	247553	21.95	ng/ul	91
31) Hexachlorobutadiene	11.41	225	182002	20.67	ng/ul	95
32) Caprolactam	12.01	113	72396	18.31	ng/ul	76
33) 4-Chloro-3-methylphenol	12.34	107	246137	20.26	ng/ul	98
34) 2-Methylnaphthalene	12.72	142	447815	20.39	ng/ul	91

Data Path : Z:\HPCHEM1\BNA_G\DATA\BG111516\
 Data File : BG024794.D
 Acq On : 15 Nov 2016 13:11
 Operator : UM/SJ
 Sample : SSTDCCC020
 Misc :
 ALS Vial : 2 Sample Multiplier: 1

Instrument :
 BNA_G
 ClientSampleId :
 SSTD02011

Quant Time: Nov 15 16:43:38 2016
 Quant Method : Z:\HPCHEM1\BNA_G\METHODS\SOM02.2-EPA-BG111416.M
 Quant Title : SVOA CALIBRATION
 QLast Update : Tue Nov 15 15:42:09 2016
 Response via : Initial Calibration

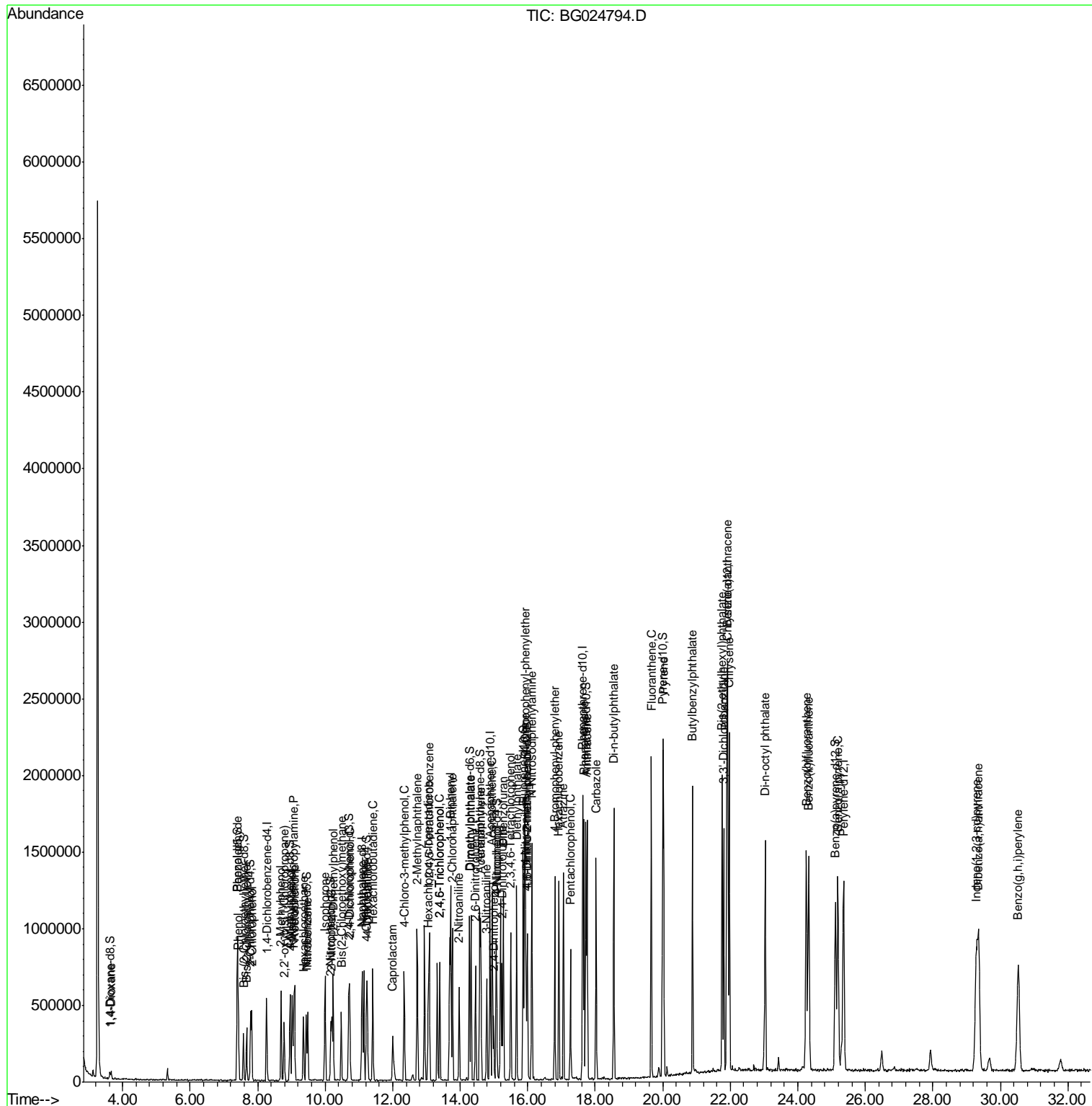
Internal Standards	R.T.	QIon	Response	Conc	Units	Dev(Min)
36) 1,2,4,5-Tetrachlorobenzene	13.08	216	323699	20.28	ng/ul#	93
37) Hexachlorocyclopentadiene	13.06	237	210147	20.43	ng/ul	96
38) 2,4,6-Trichlorophenol	13.39	196	210735	21.71	ng/ul	87
39) 2,4,5-Trichlorophenol	13.39	196	210735	19.98	ng/ul	96
40) 1,1'-Biphenyl	13.72	154	635356	20.07	ng/ul	97
41) 2-Chloronaphthalene	13.77	162	497197	20.22	ng/ul	97
42) 2-Nitroaniline	13.97	65	185358	19.00	ng/ul	96
44) Dimethylphthalate	14.32	163	676524	19.66	ng/ul	97
45) 2,6-Dinitrotoluene	14.45	165	144927	20.04	ng/ul#	93
47) Acenaphthylene	14.61	152	748972	19.80	ng/ul	99
48) 3-Nitroaniline	14.79	138	135178	20.23	ng/ul#	86
49) Acenaphthene	14.94	153	514499	19.21	ng/ul	96
50) 2,4-Dinitrophenol	14.99	184	88589	17.12	ng/ul#	79
52) 4-Nitrophenol	15.07	109	147383	19.29	ng/ul	95
53) Dibenzofuran	15.27	168	790575	19.30	ng/ul	98
54) 2,4-Dinitrotoluene	15.23	165	215919	19.74	ng/ul#	86
55) 2,3,4,6-Tetrachlorophenol	15.50	232	214340	19.53	ng/ul#	99
56) Diethylphthalate	15.67	149	693948	18.99	ng/ul	95
58) Fluorene	15.93	166	648770	19.51	ng/ul	98
59) 4-Chlorophenyl-phenylether	15.91	204	364468	19.38	ng/ul	91
60) 4-Nitroaniline	15.94	138	145606	19.16	ng/ul	96
63) 4,6-Dinitro-2-methylphenol	16.00	198	150500	19.65	ng/ul#	90
64) N-Nitrosodiphenylamine	16.12	169	585217	19.71	ng/ul	95
65) 4-Bromophenyl-phenylether	16.80	248	272251	20.38	ng/ul	97
66) Hexachlorobenzene	16.92	284	308084	20.84	ng/ul#	89
67) Atrazine	17.06	200	285864	20.54	ng/ul	95
68) Pentachlorophenol	17.27	266	165719	18.98	ng/ul	95
69) Phenanthrene	17.67	178	1114779	20.35	ng/ul	99
71) Anthracene	17.76	178	1124791	19.85	ng/ul	98
72) Carbazole	18.03	167	978913	21.06	ng/ul	98
73) Di-n-butylphthalate	18.55	149	1171204	20.00	ng/ul	99
74) Fluoranthene	19.66	202	1410532	22.17	ng/ul	97
77) Pyrene	20.02	202	1417900	20.76	ng/ul	97
78) Butylbenzylphthalate	20.88	149	570706	20.41	ng/ul	96
79) 3,3'-Dichlorobenzidine	21.81	252	585789	21.92	ng/ul	92
80) Benzo(a)anthracene	21.90	228	1556904	20.59	ng/ul	98
81) Bis(2-ethylhexyl)phthalate	21.75	149	789937	20.65	ng/ul	98
82) Chrysene	21.97	228	1467778	20.70	ng/ul	95
84) Di-n-octyl phthalate	23.03	149	1367915	21.89	ng/ul	100
85) Benzo(b)fluoranthene	24.25	252	1585044	20.38	ng/ul	97
86) Benzo(k)fluoranthene	24.33	252	1523965	20.63	ng/ul	99
88) Benzo(a)pyrene	25.19	252	1542160	20.49	ng/ul#	95
89) Indeno(1,2,3-cd)pyrene	29.29	276	1952004	20.74	ng/ul	97
90) Dibenzo(a,h)anthracene	29.36	278	1589184	20.27	ng/ul	99
91) Benzo(g,h,i)perylene	30.53	276	1586307	20.47	ng/ul	100

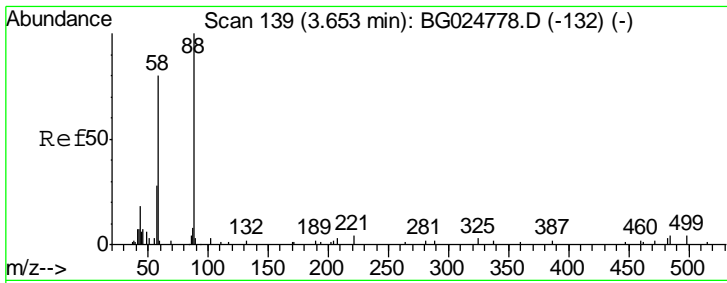
(#) = qualifier out of range (m) = manual integration (+) = signals summed

Data Path : Z:\HPCHEM1\BNA_G\DATA\BG111516\
 Data File : BG024794.D
 Acq On : 15 Nov 2016 13:11
 Operator : UM/SJ
 Sample : SSTDCCC020
 Misc :
 ALS Vial : 2 Sample Multiplier: 1

Instrument :
 BNA_G
 Client Sampled :
 SSTD02011

Quant Time: Nov 15 16:43:38 2016
 Quant Method : Z:\HPCHEM1\BNA_G\METHODS\SOM02.2-EPA-BG111416.M
 Quant Title : SVOA CALIBRATION
 QLast Update : Tue Nov 15 15:42:09 2016
 Response via : Initial Calibration

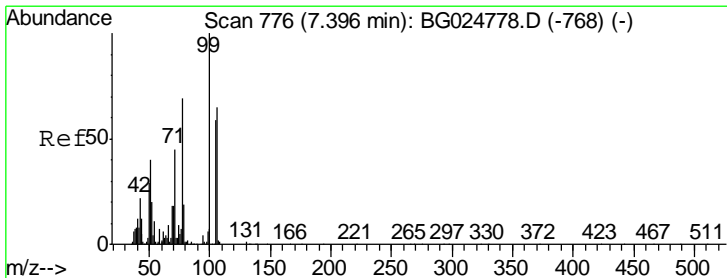
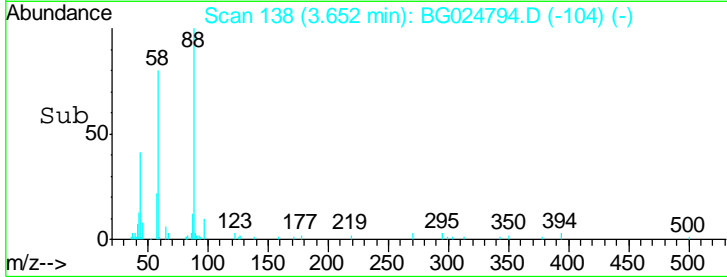
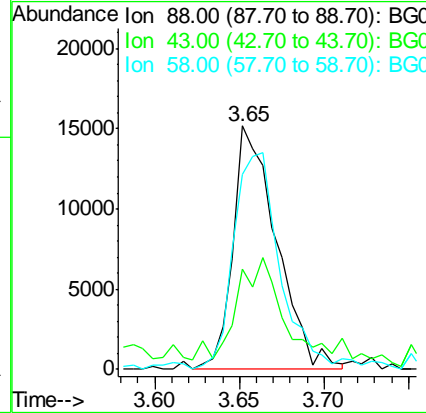
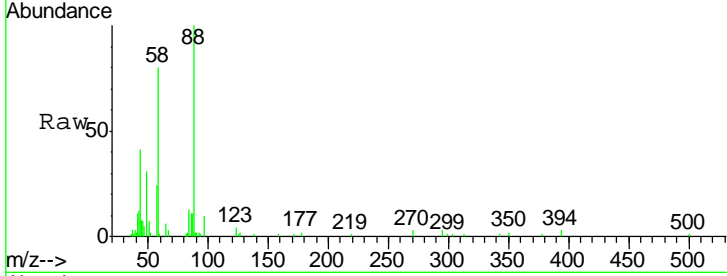




#2
 1,4-Dioxane
 Concen: 7.85 ng/uL
 RT: 3.65 min Scan# 138
 Delta R.T. -0.00 min
 Lab File: BG024794.D
 Acq: 15 Nov 2016 13:11

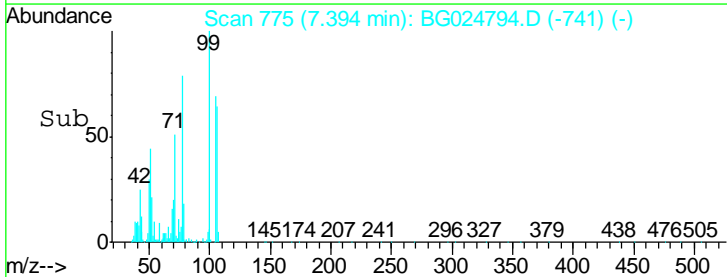
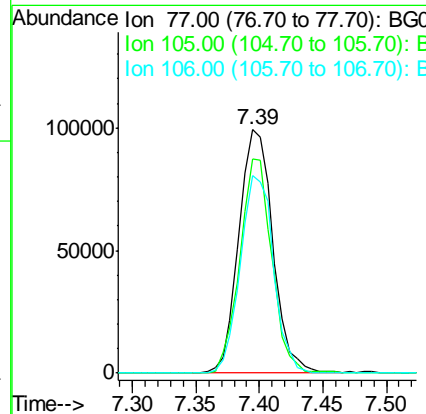
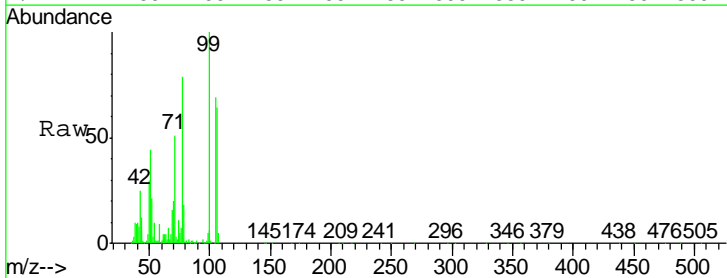
Instrument :
 BNA_G
 ClientSampleId :
 SSTD02011

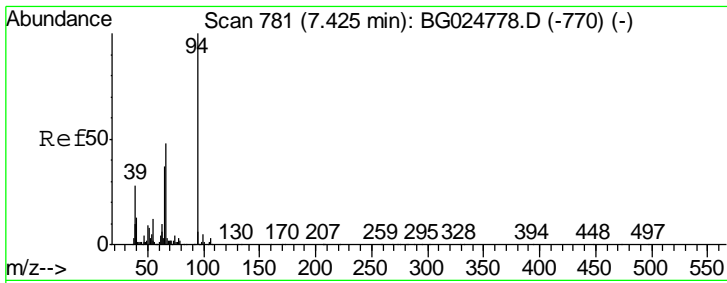
Tgt Ion	Resp	Lower	Upper
88	27090		
88	100		
43	41.3	39.2	58.8
58	80.0	69.4	104.0



#4
 Benzaldehyde
 Concen: 23.47 ng/ul
 RT: 7.39 min Scan# 775
 Delta R.T. -0.00 min
 Lab File: BG024794.D
 Acq: 15 Nov 2016 13:11

Tgt Ion	Resp	Lower	Upper
77	184831		
77	100		
105	87.9	62.0	93.0
106	80.9	60.2	90.4

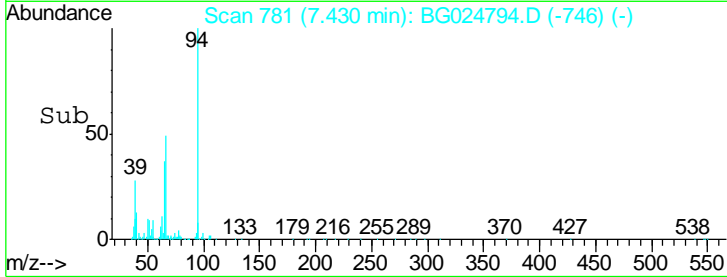
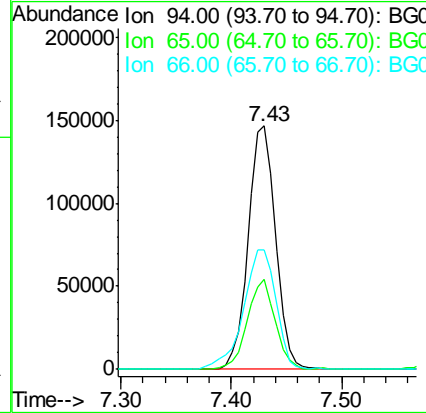
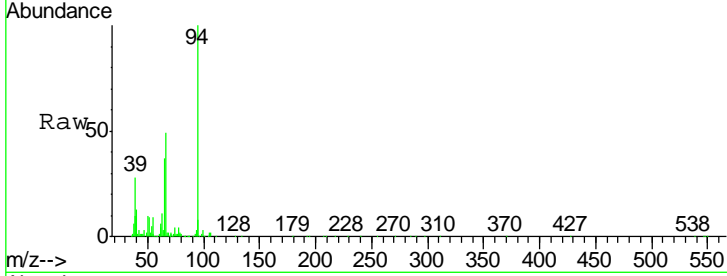




#6
 Phenol
 Concen: 20.03 ng/ul
 RT: 7.43 min Scan# 781
 Delta R.T. 0.00 min
 Lab File: BG024794.D
 Acq: 15 Nov 2016 13:11

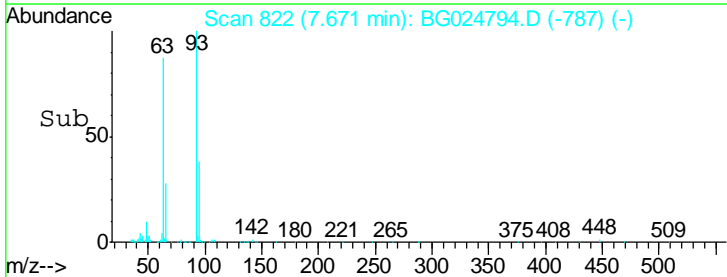
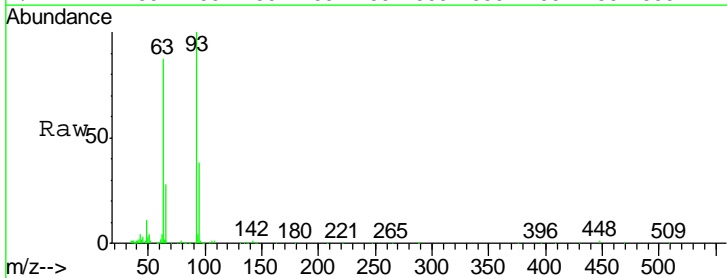
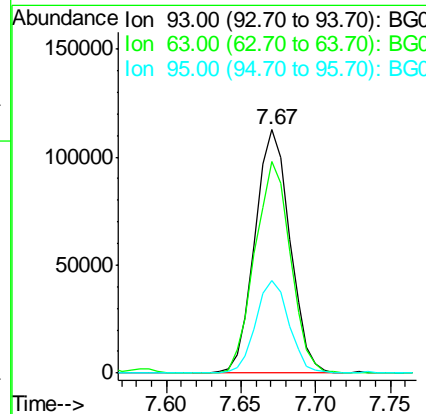
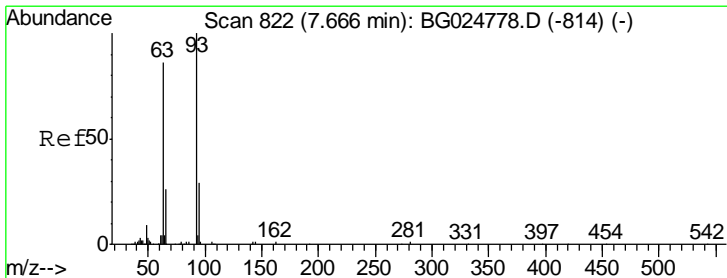
Instrument :
 BNA_G
 ClientSampled :
 SSTD02011

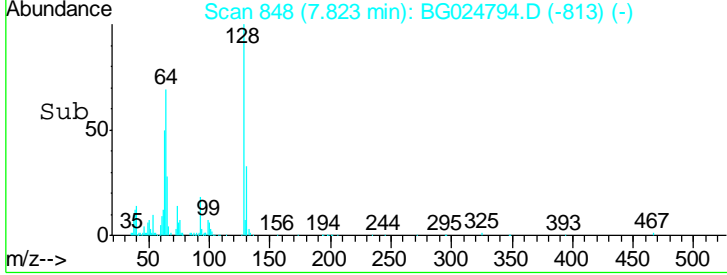
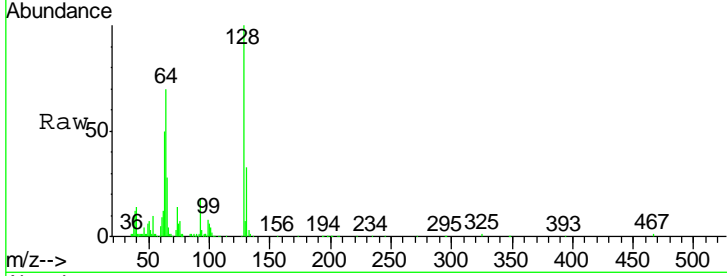
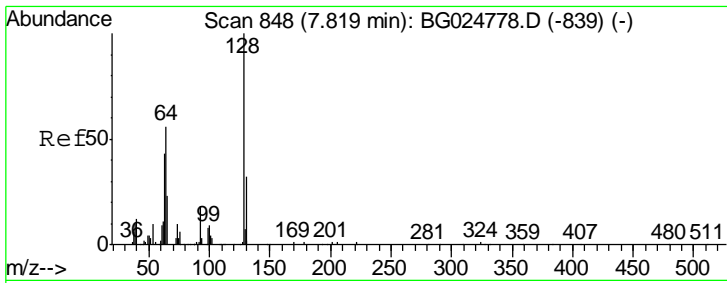
Tgt Ion	Resp	Lower	Upper
94	100		
65	36.9	26.8	40.2
66	49.1	44.4	66.6



#8
 Bis(2-Chloroethyl)ether
 Concen: 20.10 ng/ul
 RT: 7.67 min Scan# 822
 Delta R.T. 0.00 min
 Lab File: BG024794.D
 Acq: 15 Nov 2016 13:11

Tgt Ion	Resp	Lower	Upper
93	100		
63	86.7	75.5	113.3
95	37.8	29.2	43.8

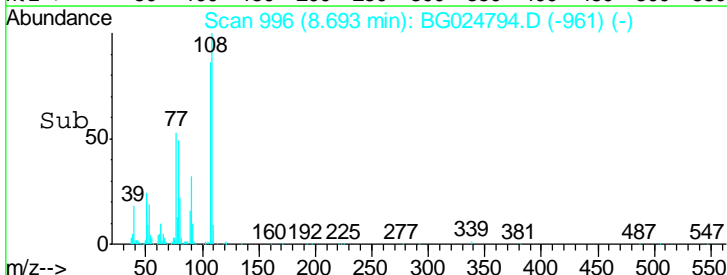
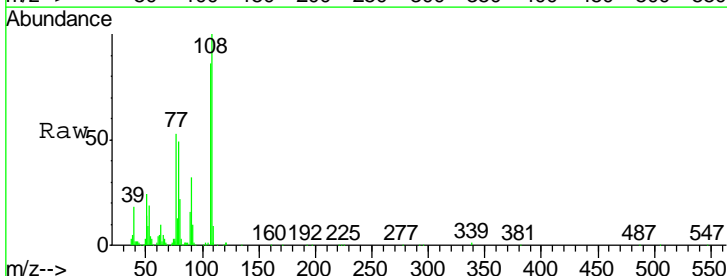
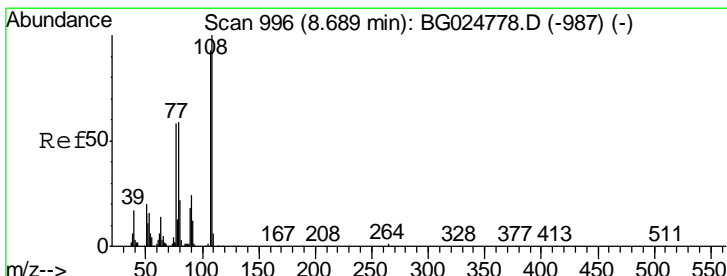
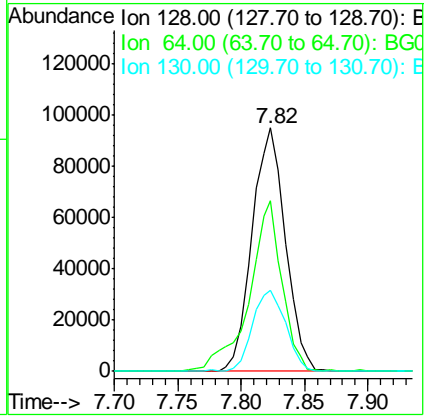




#10
 2-Chlorophenol
 Concen: 20.54 ng/ul
 RT: 7.82 min Scan# 848
 Delta R.T. 0.00 min
 Lab File: BG024794.D
 Acq: 15 Nov 2016 13:11

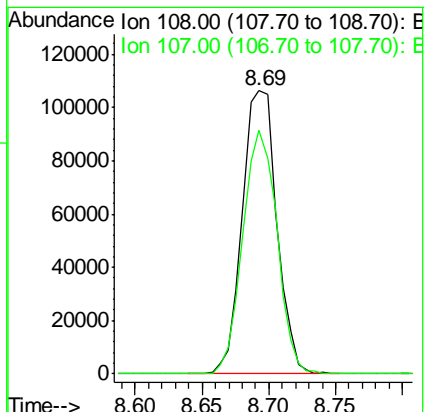
Instrument :
 BNA_G
ClientSampled :
 SSTD02011

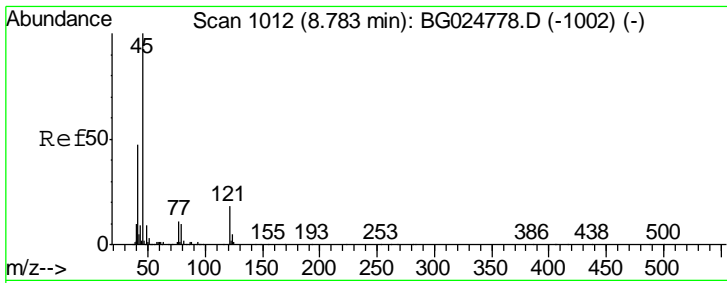
Tgt Ion	Resp	Lower	Upper
128	174219		
64	69.9	56.3	84.5
130	33.3	26.7	40.1



#11
 2-Methylphenol
 Concen: 20.33 ng/ul
 RT: 8.69 min Scan# 996
 Delta R.T. 0.00 min
 Lab File: BG024794.D
 Acq: 15 Nov 2016 13:11

Tgt Ion	Resp	Lower	Upper
108	190270		
107	86.0	76.7	115.1

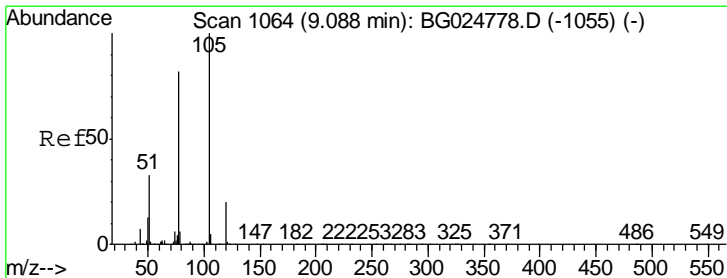
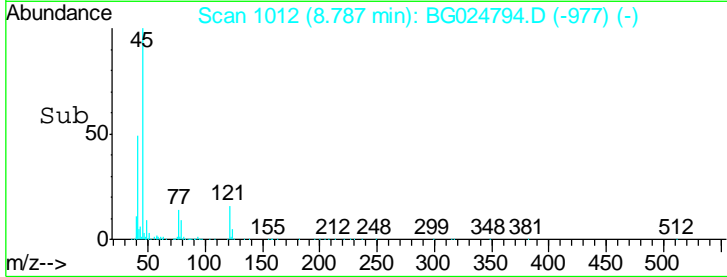
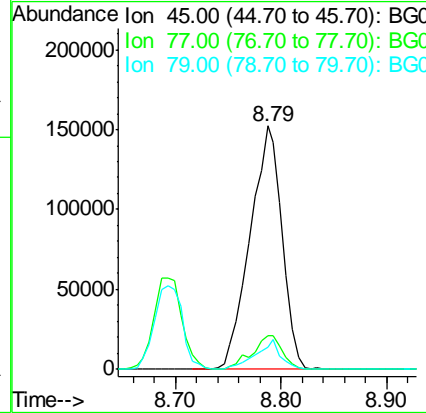
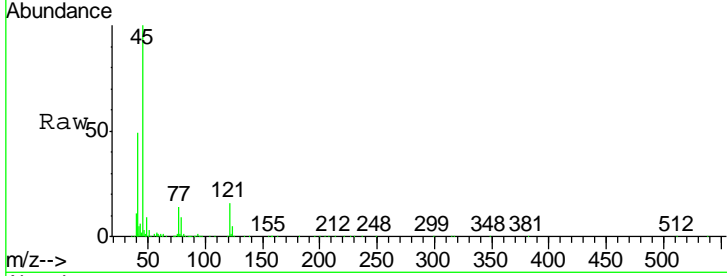




#12
 2,2'-oxybis(1-Chloropropane)
 Concen: 20.70 ng/ul
 RT: 8.79 min Scan# 1012
 Delta R.T. 0.00 min
 Lab File: BG024794.D
 Acq: 15 Nov 2016 13:11

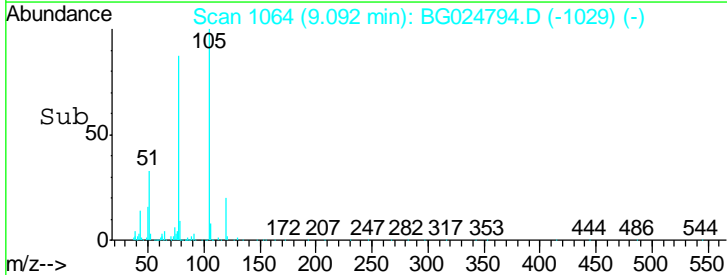
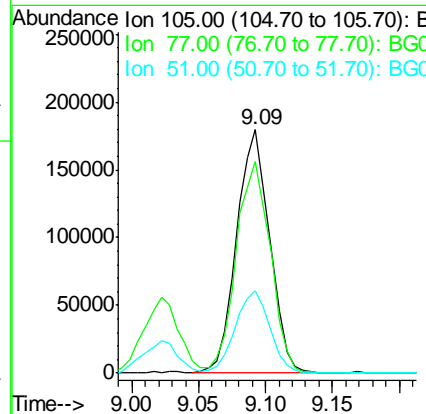
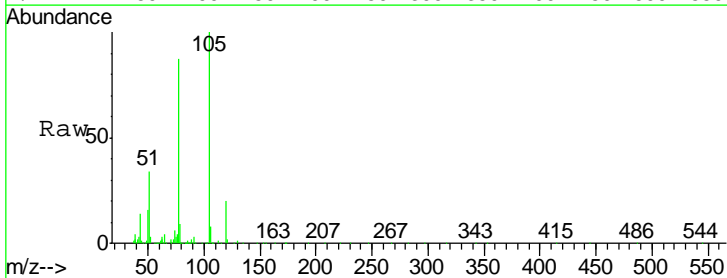
Instrument :
 BNA_G
 ClientSampleId :
 SSTD02011

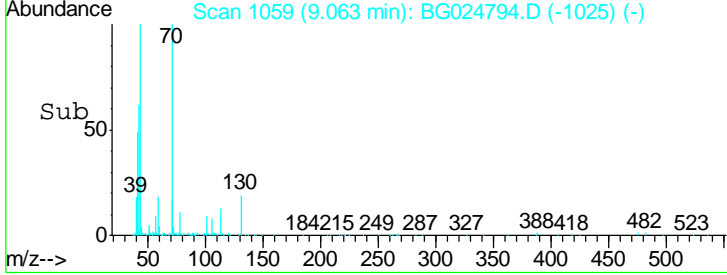
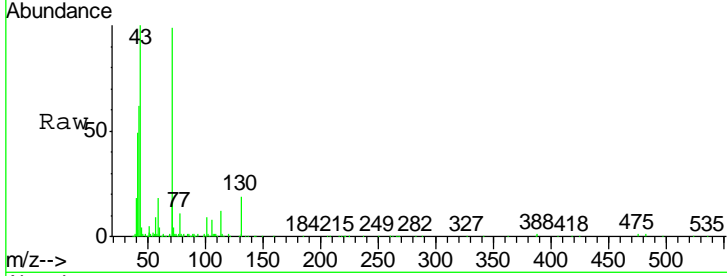
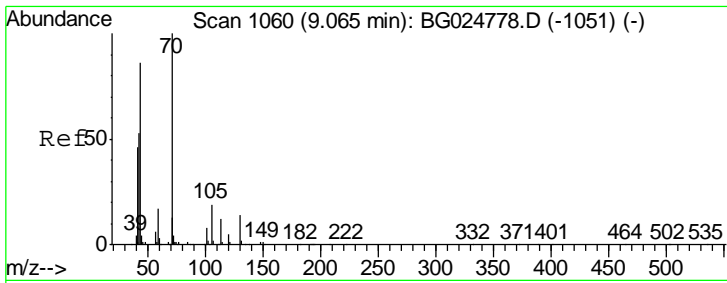
Tgt Ion	Resp	Lower	Upper
45	319500		
77	14.0	10.0	15.0
79	8.9	7.3	10.9



#14
 Acetophenone
 Concen: 19.95 ng/ul
 RT: 9.09 min Scan# 1064
 Delta R.T. 0.00 min
 Lab File: BG024794.D
 Acq: 15 Nov 2016 13:11

Tgt Ion	Resp	Lower	Upper
105	308478		
77	86.9	76.0	114.0
51	33.7	34.8	52.2#

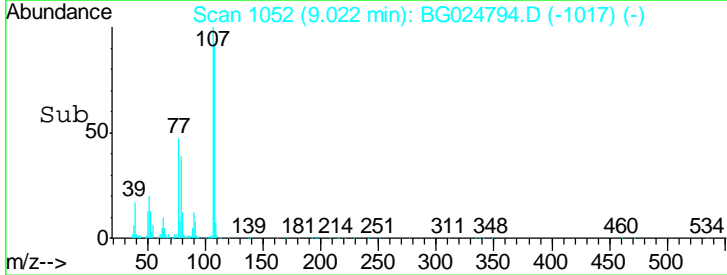
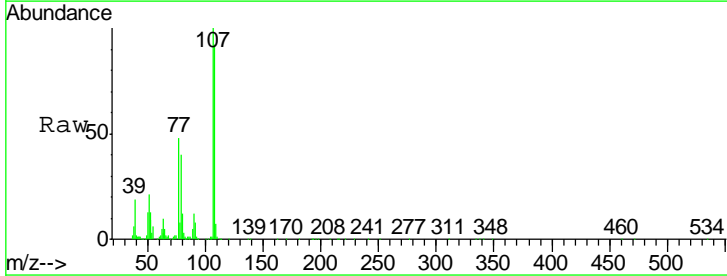
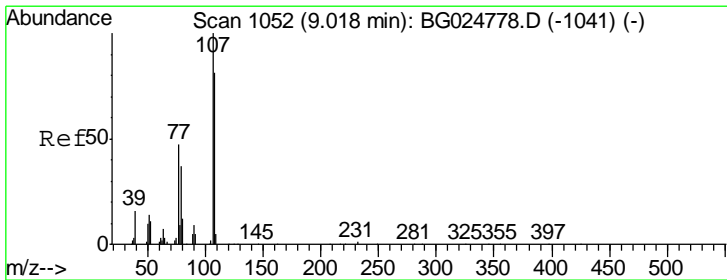
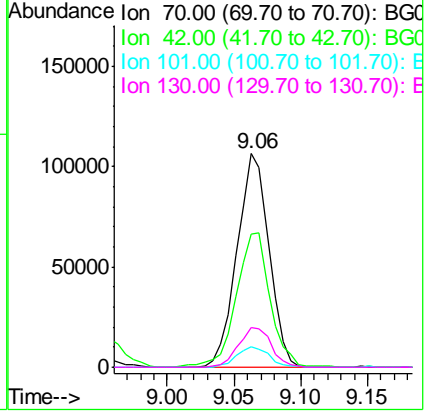




#15
 N-Nitroso-di-n-propylamine
 Concen: 20.02 ng/ul
 RT: 9.06 min Scan# 1059
 Delta R.T. -0.00 min
 Lab File: BG024794.D
 Acq: 15 Nov 2016 13:11

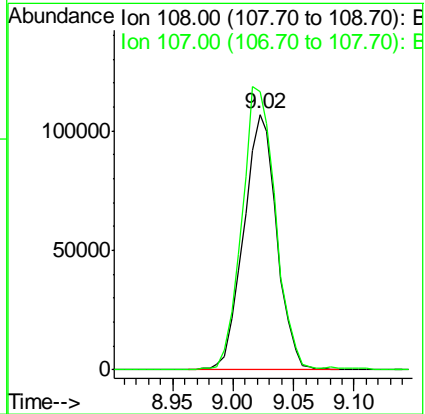
Instrument :
 BNA_G
ClientSampled :
 SSTD02011

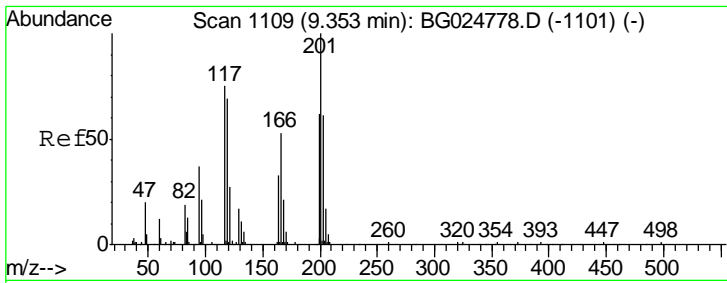
Tgt Ion	Resp	Lower	Upper
70	175934		
42	62.3	59.0	88.6
101	9.3	6.6	9.8
130	18.7	15.6	23.4



#16
 4-Methylphenol
 Concen: 20.07 ng/ul
 RT: 9.02 min Scan# 1052
 Delta R.T. 0.00 min
 Lab File: BG024794.D
 Acq: 15 Nov 2016 13:11

Tgt Ion	Resp	Lower	Upper
108	203162		
107	108.5	91.7	137.5

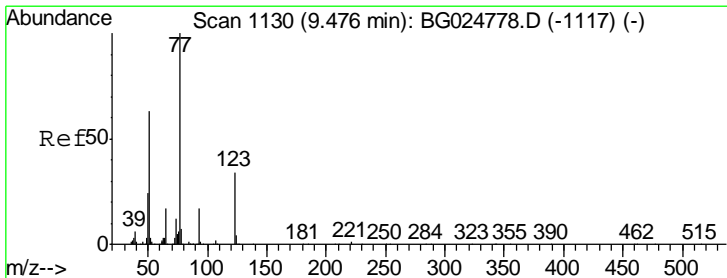
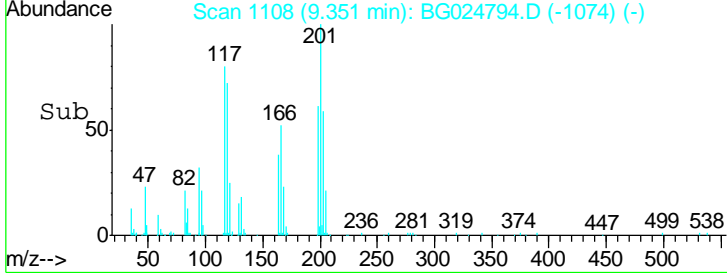
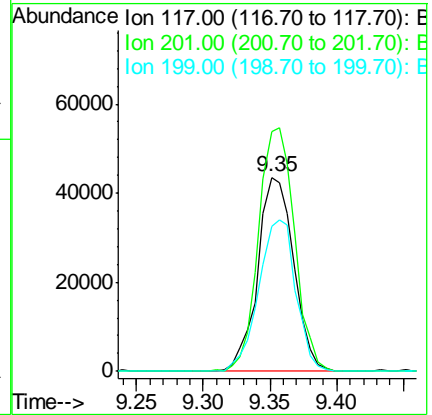
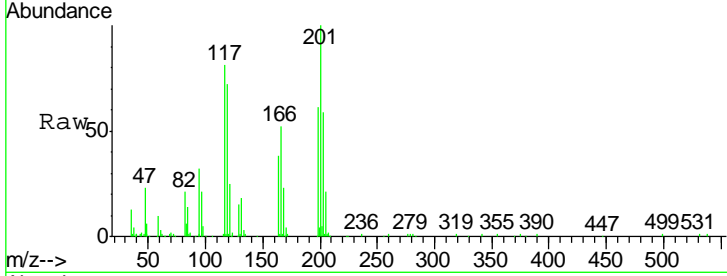




#17
 Hexachloroethane
 Concen: 20.90 ng/ul
 RT: 9.35 min Scan# 1108
 Delta R.T. -0.00 min
 Lab File: BG024794.D
 Acq: 15 Nov 2016 13:11

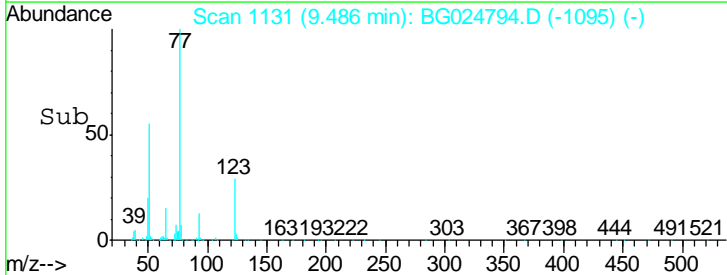
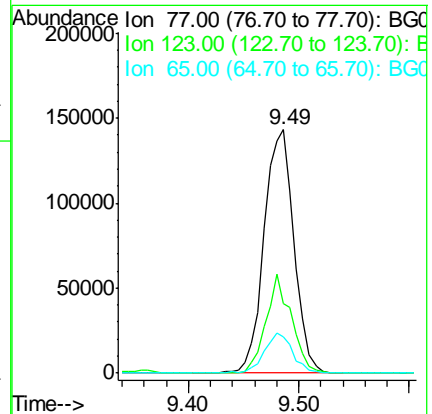
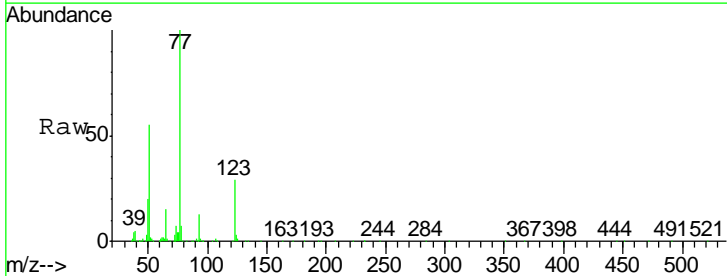
Instrument :
 BNA_G
 ClientSampled :
 SSTD02011

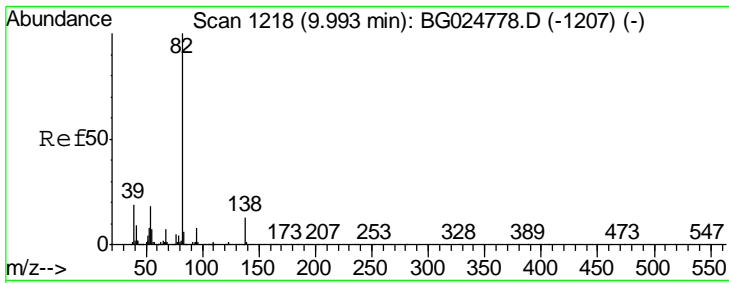
Tgt Ion	Resp	Lower	Upper
117	100		
201	123.2	91.9	137.9
199	74.8	64.3	96.5



#20
 Nitrobenzene
 Concen: 20.71 ng/ul
 RT: 9.49 min Scan# 1131
 Delta R.T. 0.01 min
 Lab File: BG024794.D
 Acq: 15 Nov 2016 13:11

Tgt Ion	Resp	Lower	Upper
77	100		
123	28.8	27.4	41.0
65	14.7	13.3	19.9

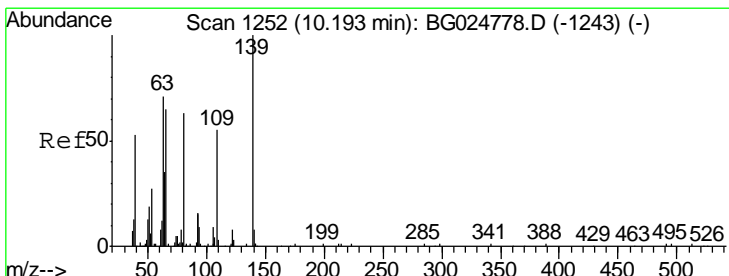
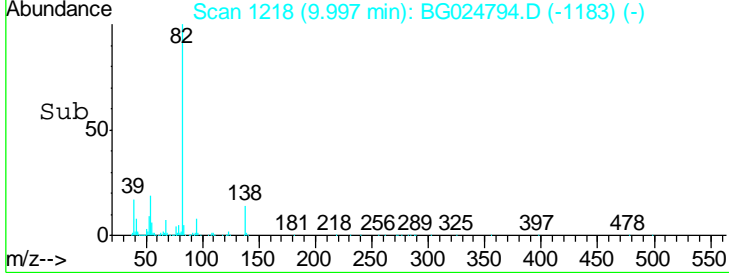
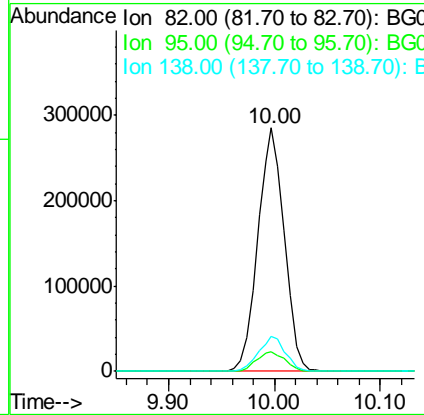
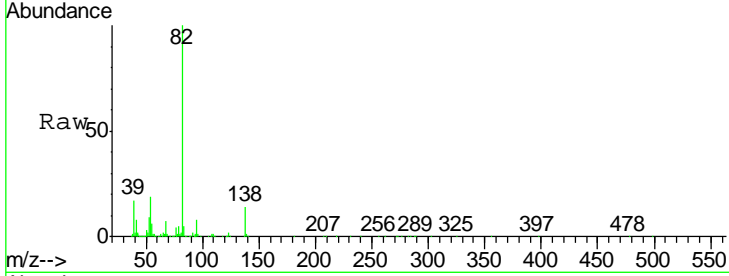




#21
 Isophorone
 Concen: 20.29 ng/ul
 RT: 10.00 min Scan# 1218
 Delta R.T. 0.00 min
 Lab File: BG024794.D
 Acq: 15 Nov 2016 13:11

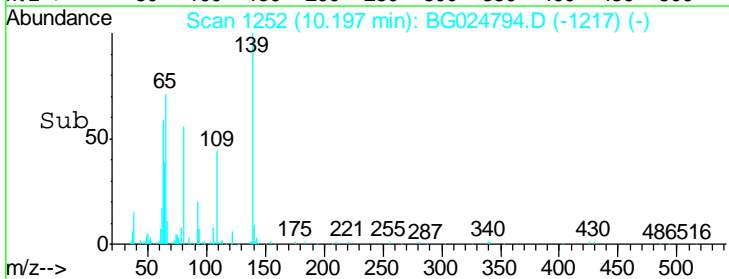
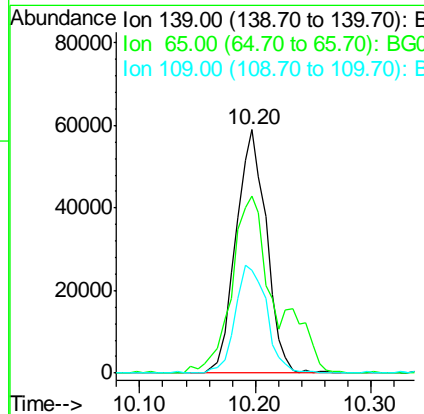
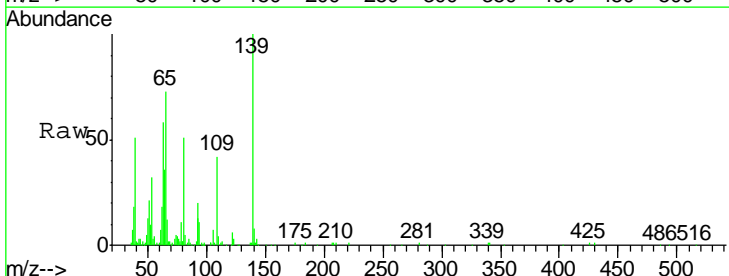
Instrument :
 BNA_G
 ClientSampled :
 SSTD02011

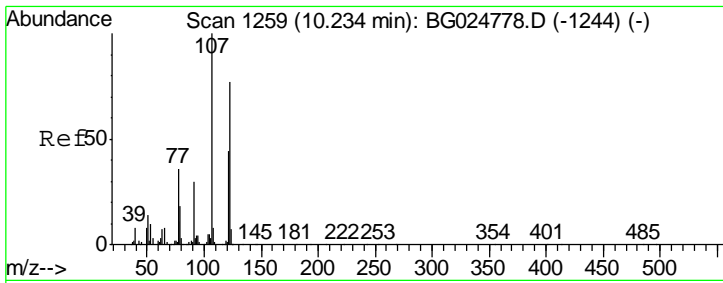
Tgt Ion	Resp	Lower	Upper
82	494899		
95	8.1	7.8	11.6
138	14.3	12.2	18.2



#23
 2-Nitrophenol
 Concen: 20.28 ng/ul
 RT: 10.20 min Scan# 1252
 Delta R.T. 0.00 min
 Lab File: BG024794.D
 Acq: 15 Nov 2016 13:11

Tgt Ion	Resp	Lower	Upper
139	107734		
65	72.6	67.0	100.6
109	42.3	39.6	59.4

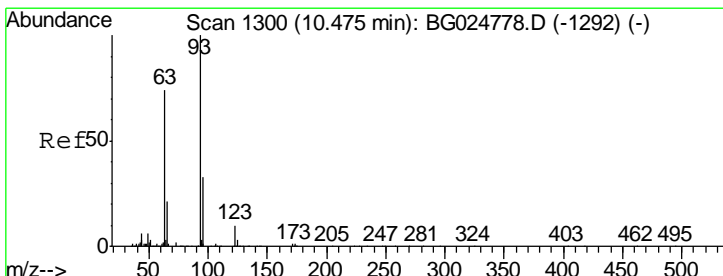
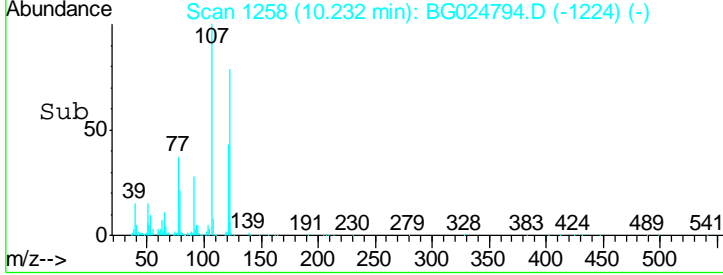
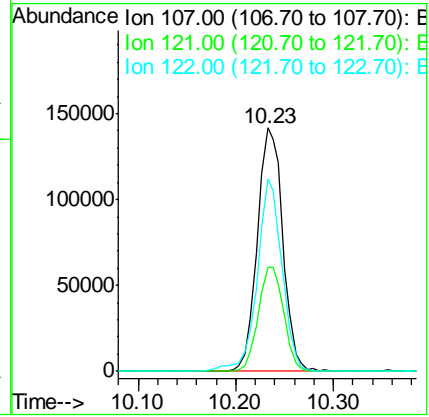
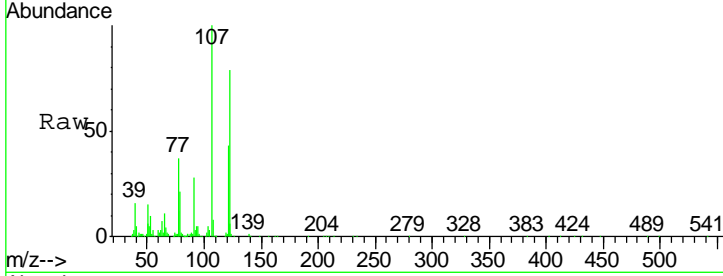




#24
 2,4-Dimethylphenol
 Concen: 20.65 ng/ul
 RT: 10.23 min Scan# 1258
 Delta R.T. -0.00 min
 Lab File: BG024794.D
 Acq: 15 Nov 2016 13:11

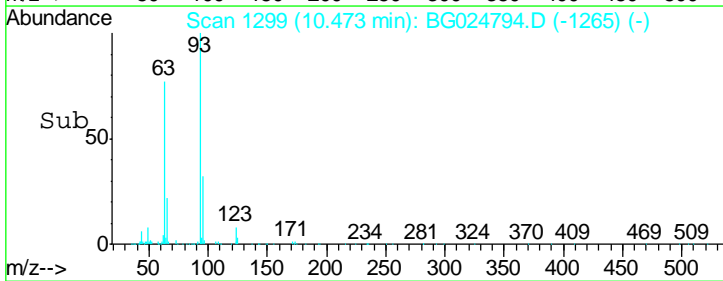
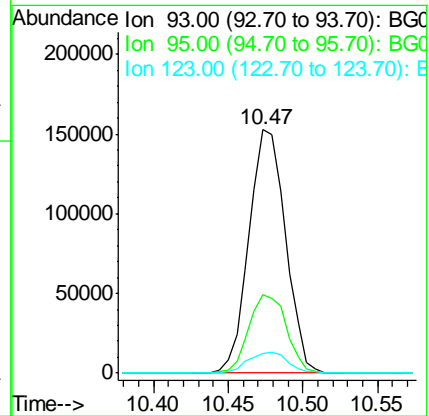
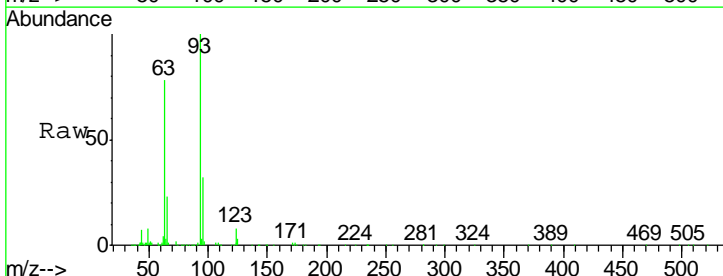
Instrument :
 BNA_G
 ClientSampled :
 SSTD02011

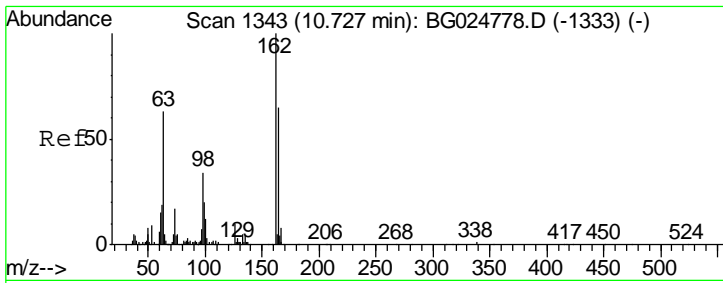
Tgt Ion	Resp	Lower	Upper
107	260493		
121	42.5	32.3	48.5
122	78.9	61.2	91.8



#25
 Bis(2-Chloroethoxy)methane
 Concen: 20.23 ng/ul
 RT: 10.47 min Scan# 1299
 Delta R.T. -0.00 min
 Lab File: BG024794.D
 Acq: 15 Nov 2016 13:11

Tgt Ion	Resp	Lower	Upper
93	259134		
95	32.1	23.4	35.0
123	8.3	7.8	11.6

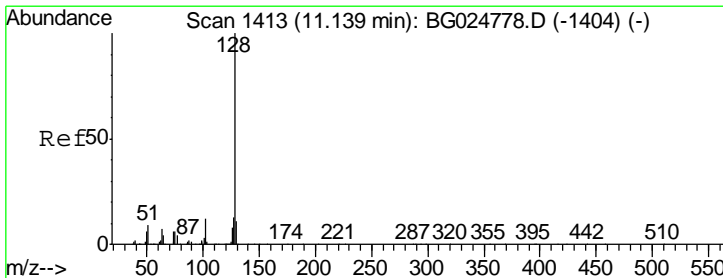
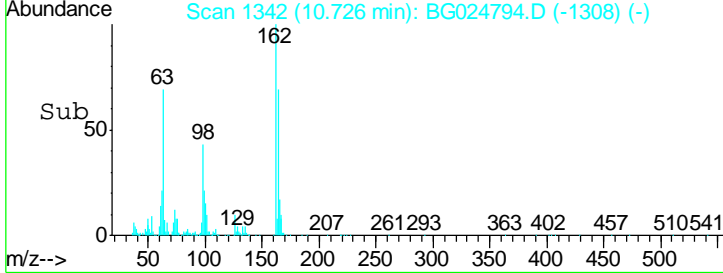
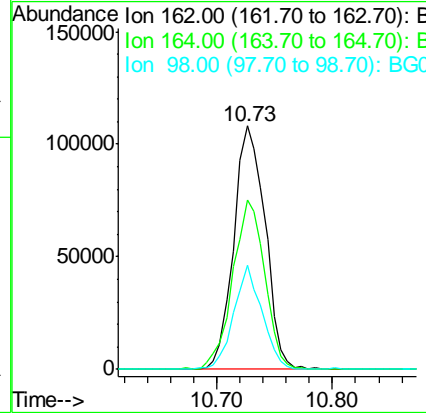
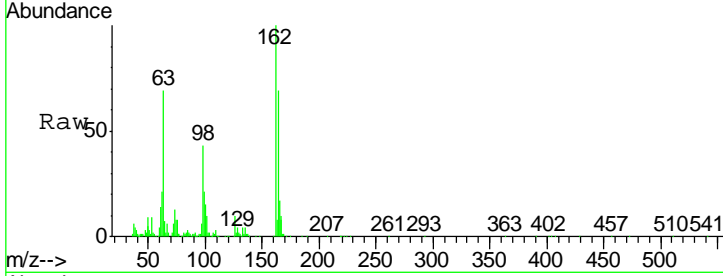




#27
 2,4-Dichlorophenol
 Concen: 20.29 ng/ul
 RT: 10.73 min Scan# 1342
 Delta R.T. -0.00 min
 Lab File: BG024794.D
 Acq: 15 Nov 2016 13:11

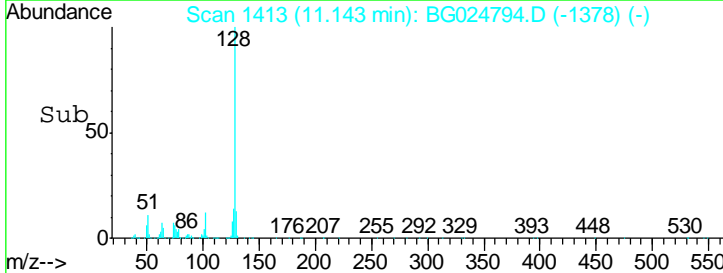
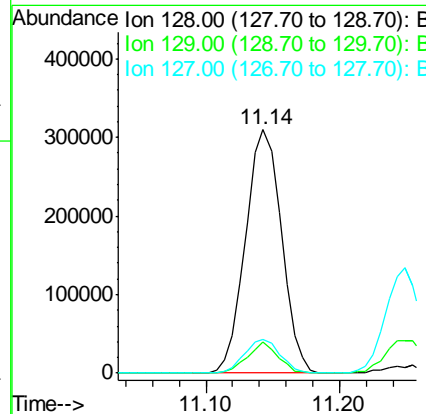
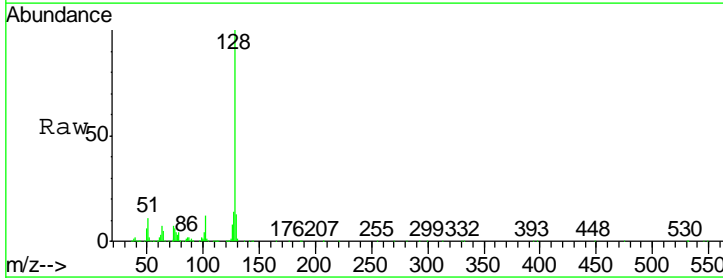
Instrument :
 BNA_G
 ClientSampleID :
 SSTD02011

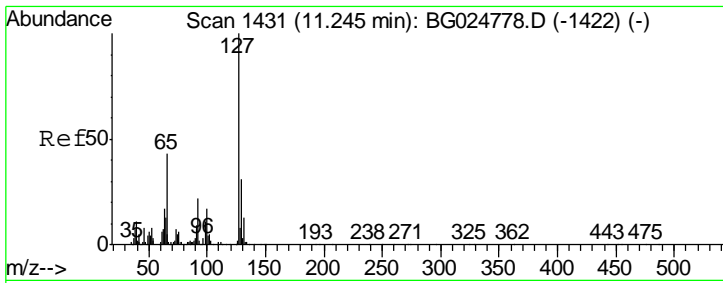
Tgt Ion	Resp	Lower	Upper
162	100		
164	69.3	50.8	76.2
98	42.7	32.1	48.1



#28
 Naphthalene
 Concen: 20.71 ng/ul
 RT: 11.14 min Scan# 1413
 Delta R.T. 0.00 min
 Lab File: BG024794.D
 Acq: 15 Nov 2016 13:11

Tgt Ion	Resp	Lower	Upper
128	100		
129	12.7	9.4	14.2
127	14.0	10.3	15.5

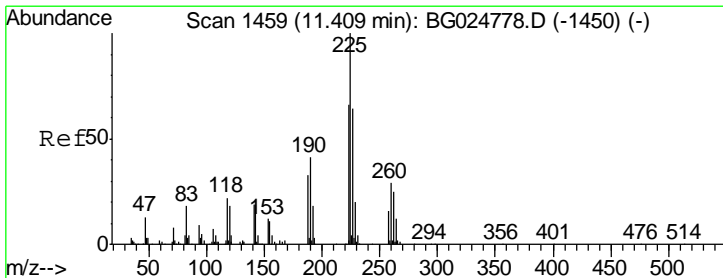
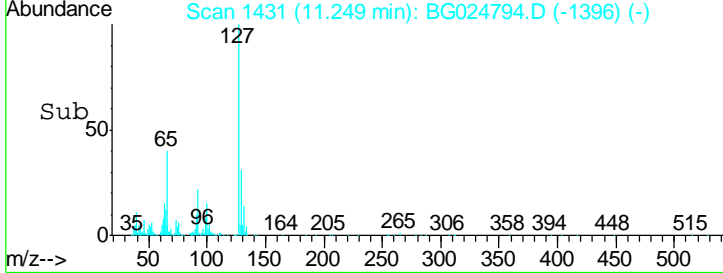
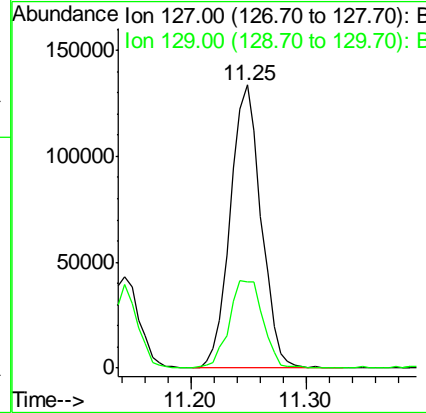
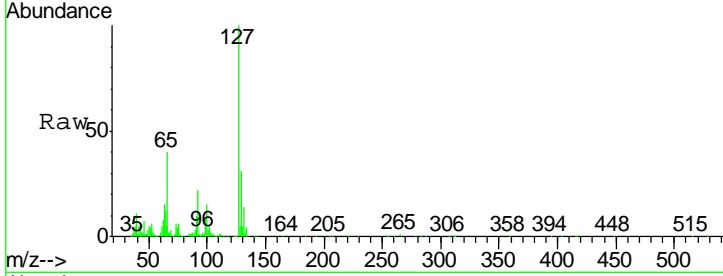




#30
 4-Chloroaniline
 Concen: 21.95 ng/ul
 RT: 11.25 min Scan# 1431
 Delta R.T. 0.00 min
 Lab File: BG024794.D
 Acq: 15 Nov 2016 13:11

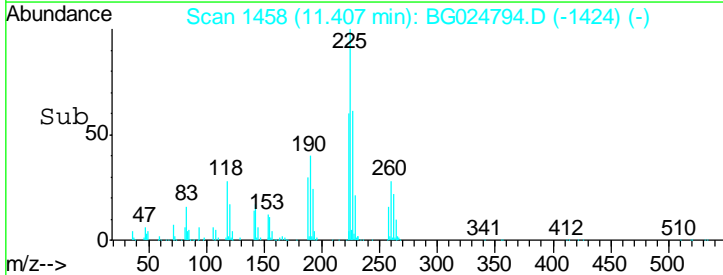
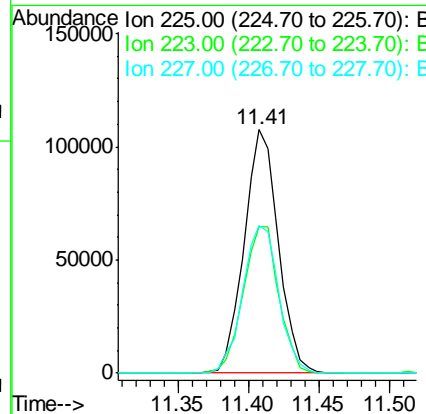
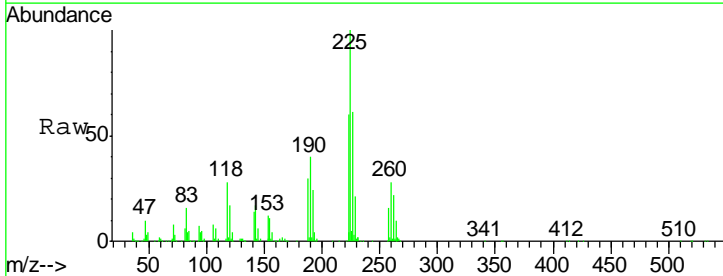
Instrument :
 BNA_G
 ClientSampled :
 SST02011

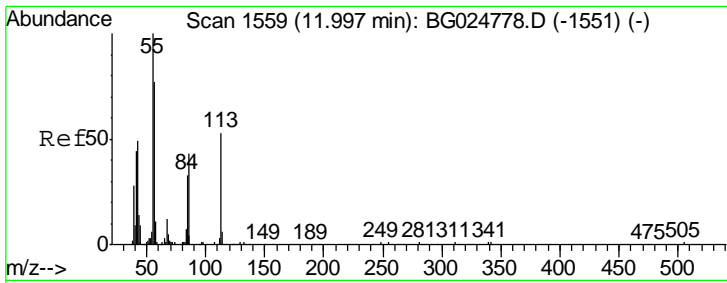
Tgt Ion	Resp	Lower	Upper
127	247553		
129	30.6	28.9	43.3



#31
 Hexachlorobutadiene
 Concen: 20.67 ng/ul
 RT: 11.41 min Scan# 1458
 Delta R.T. -0.00 min
 Lab File: BG024794.D
 Acq: 15 Nov 2016 13:11

Tgt Ion	Resp	Lower	Upper
225	182002		
223	60.0	45.9	68.9
227	60.8	44.7	67.1

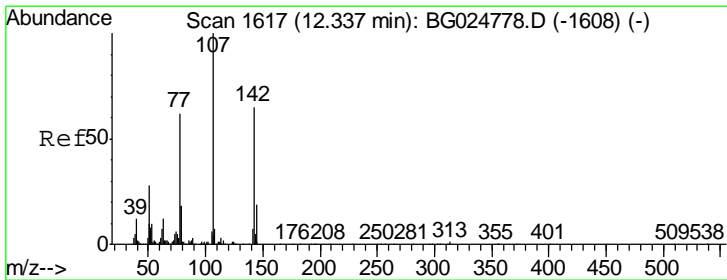
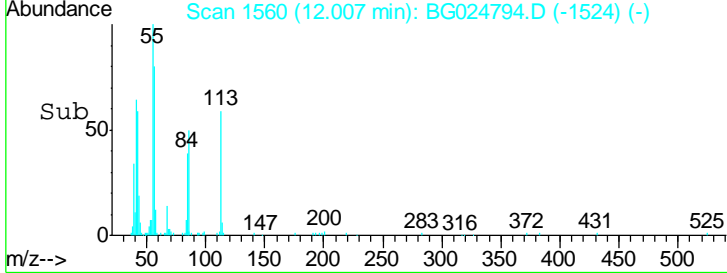
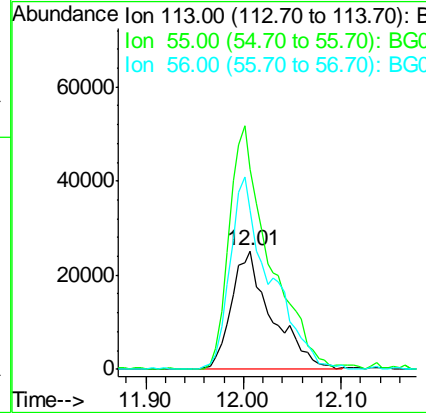
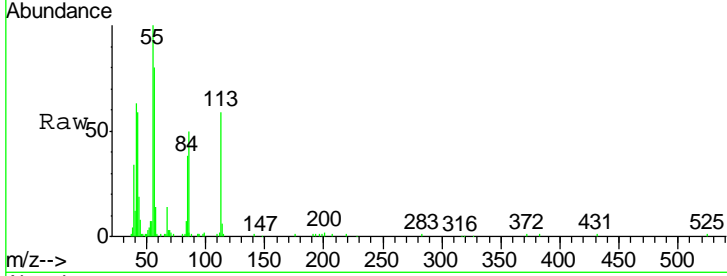




#32
 Caprolactam
 Concen: 18.31 ng/ul
 RT: 12.01 min Scan# 1560
 Delta R.T. 0.01 min
 Lab File: BG024794.D
 Acq: 15 Nov 2016 13:11

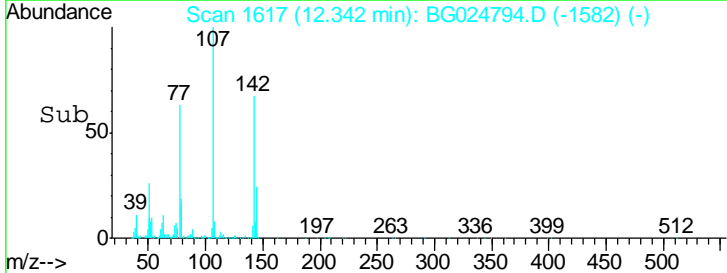
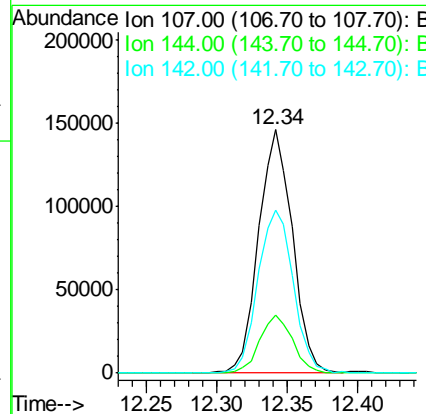
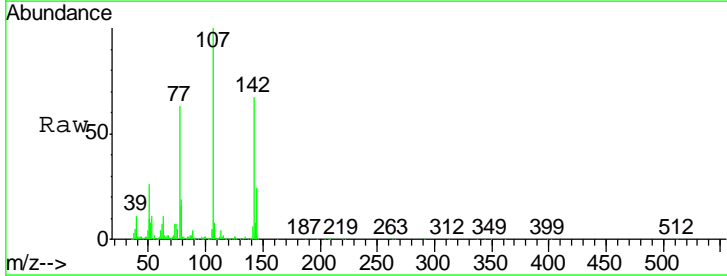
Instrument :
 BNA_G
 ClientSampled :
 SSTD02011

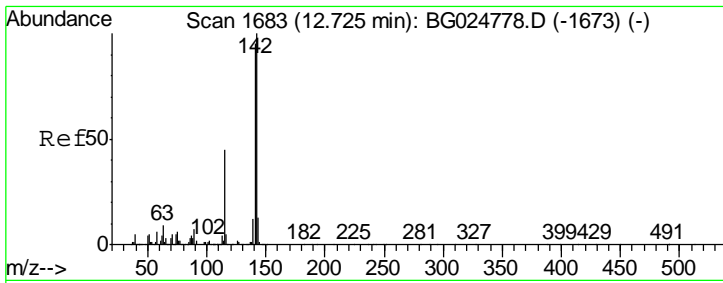
Tgt Ion	Resp	Lower	Upper
113	72396		
55	169.1	168.6	252.8
56	134.6	128.5	192.7



#33
 4-Chloro-3-methylphenol
 Concen: 20.26 ng/ul
 RT: 12.34 min Scan# 1617
 Delta R.T. 0.00 min
 Lab File: BG024794.D
 Acq: 15 Nov 2016 13:11

Tgt Ion	Resp	Lower	Upper
107	246137		
144	23.8	18.2	27.4
142	66.9	55.0	82.4

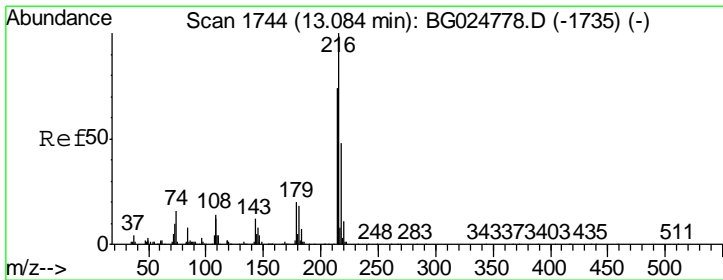
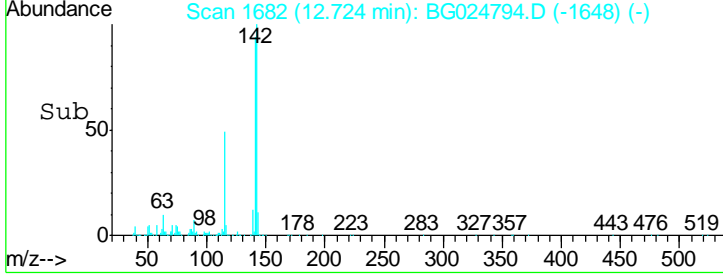
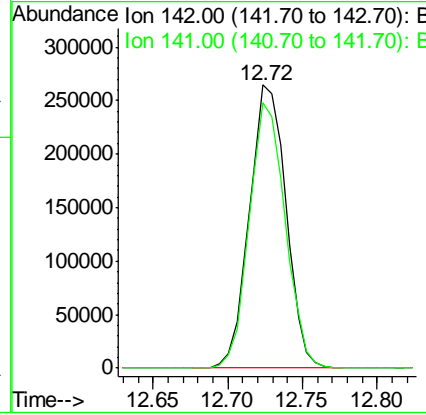
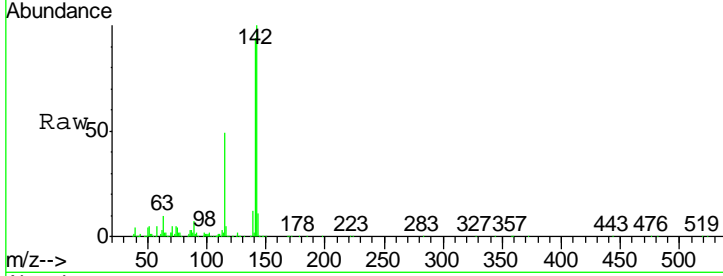




#34
 2-Methylnaphthalene
 Concen: 20.39 ng/ul
 RT: 12.72 min Scan# 1682
 Delta R.T. -0.00 min
 Lab File: BG024794.D
 Acq: 15 Nov 2016 13:11

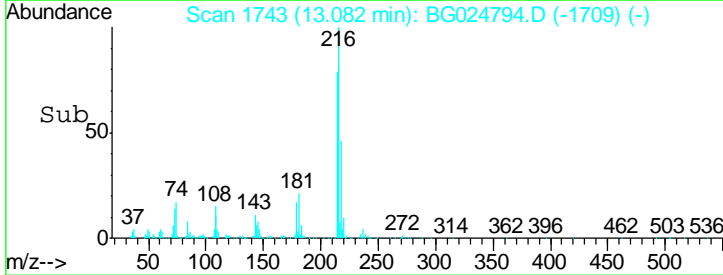
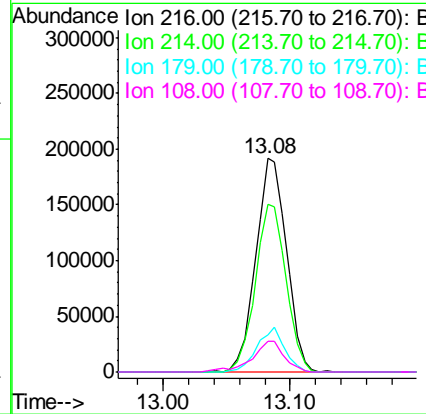
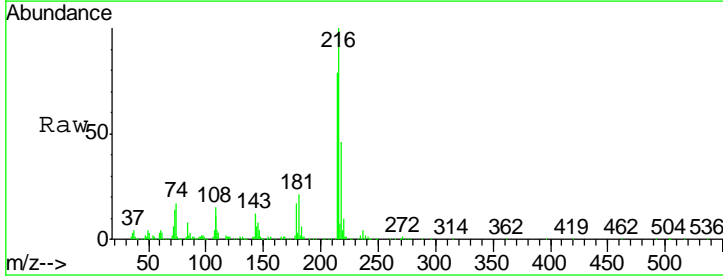
Instrument :
 BNA_G
 ClientSampleID :
 SSTD02011

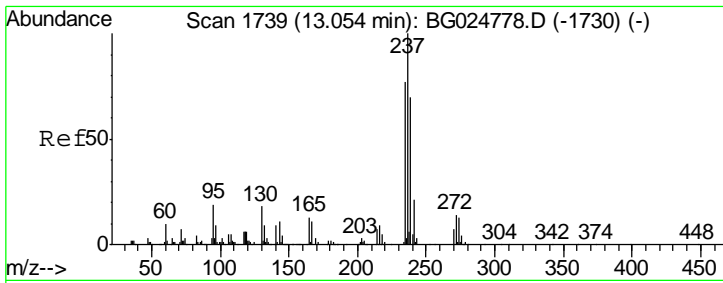
Tgt Ion: 142 Resp: 447815
 Ion Ratio Lower Upper
 142 100
 141 93.7 68.6 102.8



#36
 1,2,4,5-Tetrachlorobenzene
 Concen: 20.28 ng/ul
 RT: 13.08 min Scan# 1743
 Delta R.T. -0.00 min
 Lab File: BG024794.D
 Acq: 15 Nov 2016 13:11

Tgt Ion: 216 Resp: 323699
 Ion Ratio Lower Upper
 216 100
 214 78.8 67.0 100.6
 179 17.2 18.1 27.1#
 108 14.6 14.1 21.1

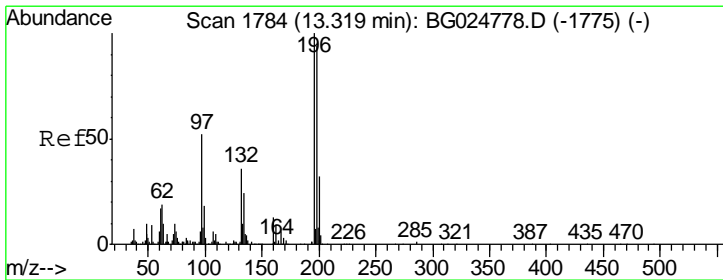
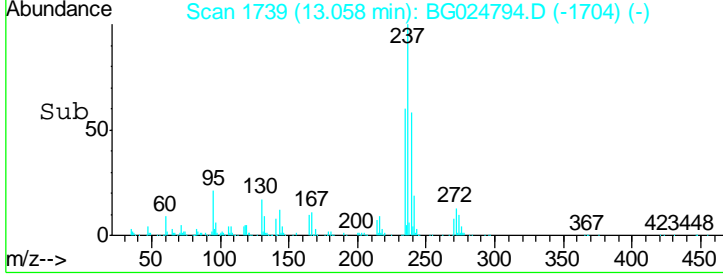
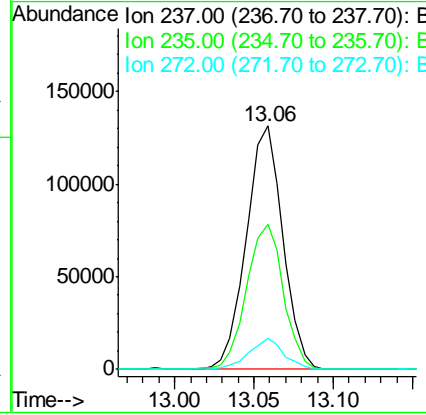
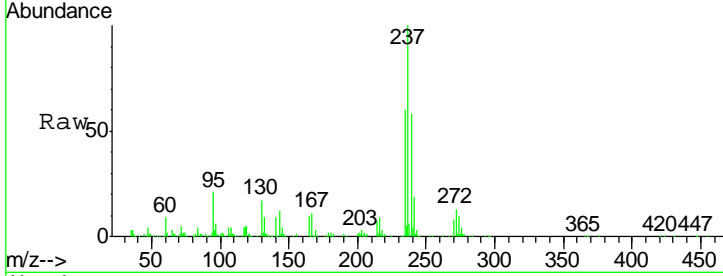




#37
 Hexachlorocyclopentadiene
 Concen: 20.43 ng/ul
 RT: 13.06 min Scan# 1739
 Delta R.T. 0.00 min
 Lab File: BG024794.D
 Acq: 15 Nov 2016 13:11

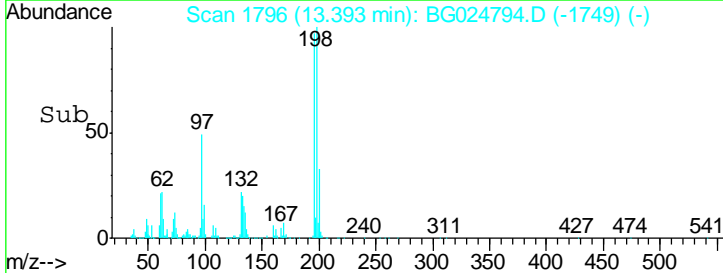
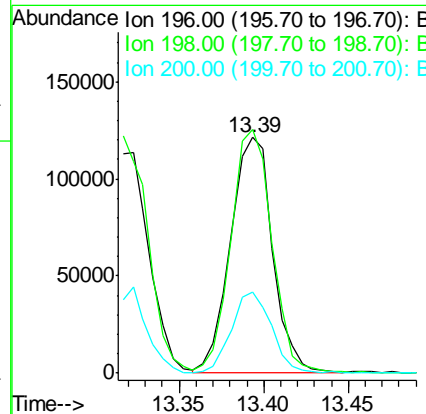
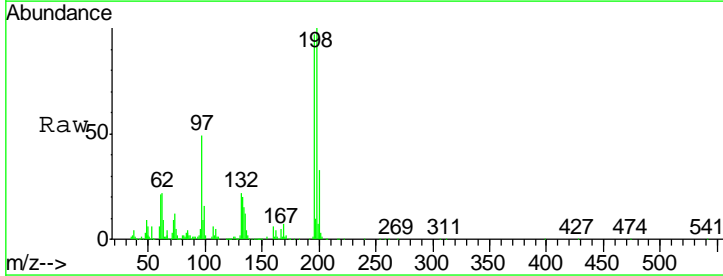
Instrument :
 BNA_G
 ClientSampled :
 SST02011

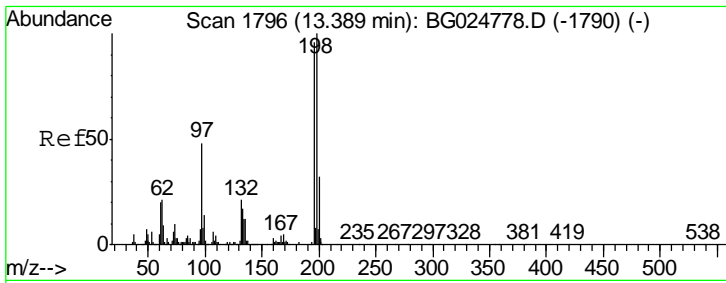
Tgt Ion	Resp	Lower	Upper
237	100		
235	59.5	50.2	75.4
272	12.8	10.6	16.0



#38
 2,4,6-Trichlorophenol
 Concen: 21.71 ng/ul
 RT: 13.39 min Scan# 1796
 Delta R.T. 0.07 min
 Lab File: BG024794.D
 Acq: 15 Nov 2016 13:11

Tgt Ion	Resp	Lower	Upper
196	100		
198	103.5	71.4	107.2
200	34.4	24.6	37.0

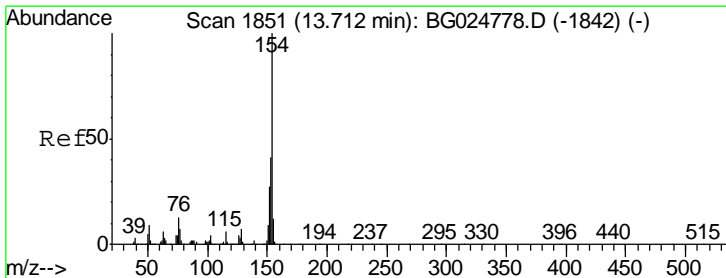
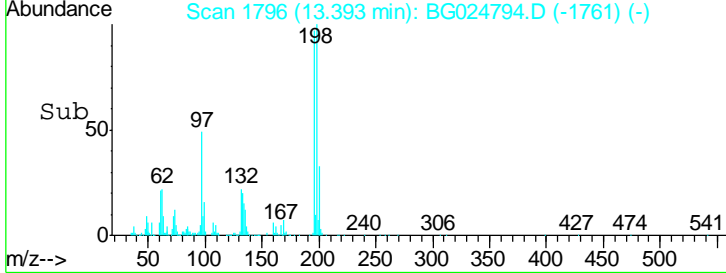
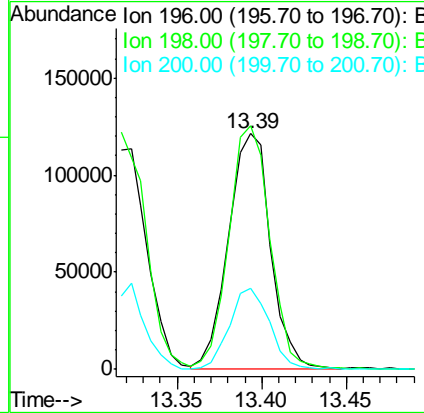
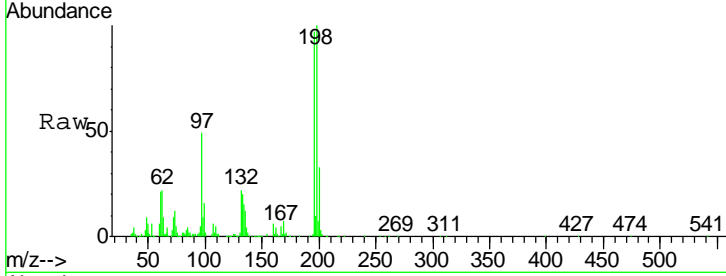




#39
 2,4,5-Trichlorophenol
 Concen: 19.98 ng/ul
 RT: 13.39 min Scan# 1796
 Delta R.T. 0.00 min
 Lab File: BG024794.D
 Acq: 15 Nov 2016 13:11

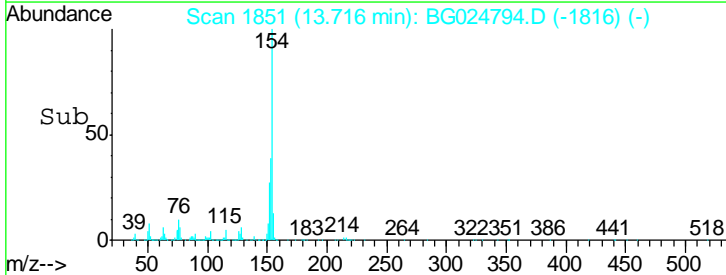
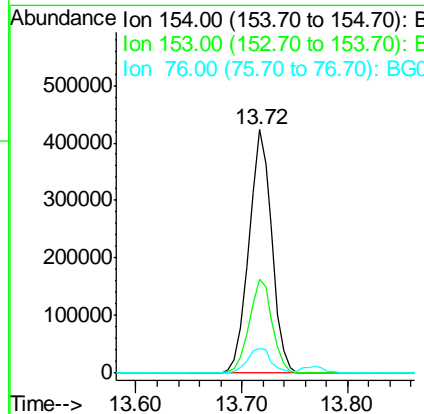
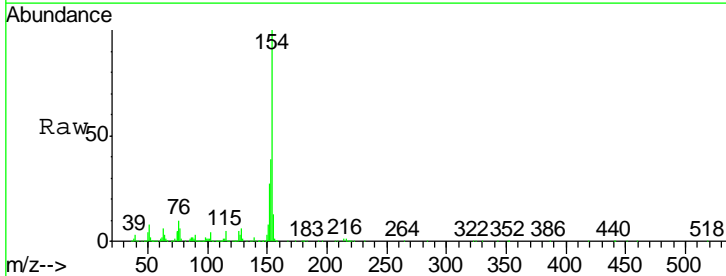
Instrument :
 BNA_G
 ClientSampled :
 SSTD02011

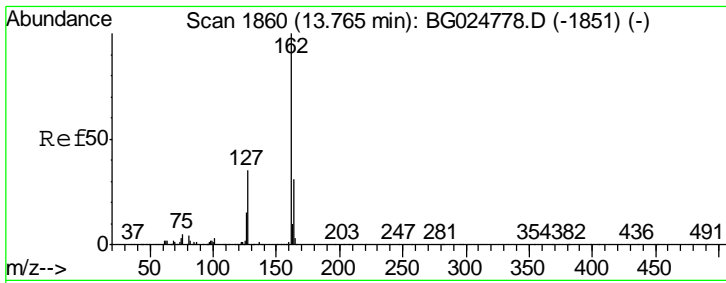
Tgt Ion	Resp	Lower	Upper
196	100		
198	103.5	78.6	118.0
200	34.4	27.3	40.9



#40
 1,1'-Biphenyl
 Concen: 20.07 ng/ul
 RT: 13.72 min Scan# 1851
 Delta R.T. 0.00 min
 Lab File: BG024794.D
 Acq: 15 Nov 2016 13:11

Tgt Ion	Resp	Lower	Upper
154	100		
153	38.6	32.2	48.2
76	10.1	9.6	14.4

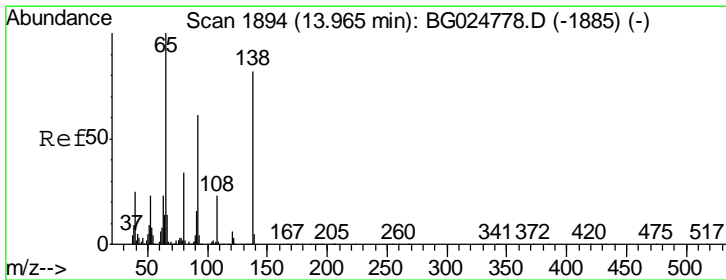
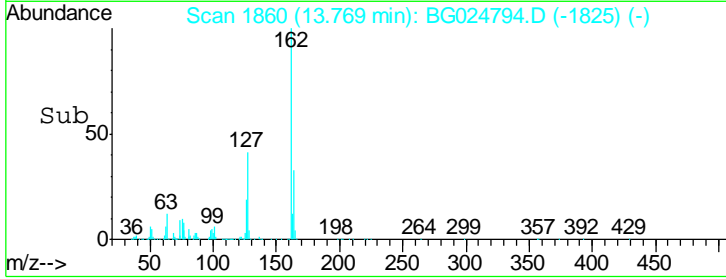
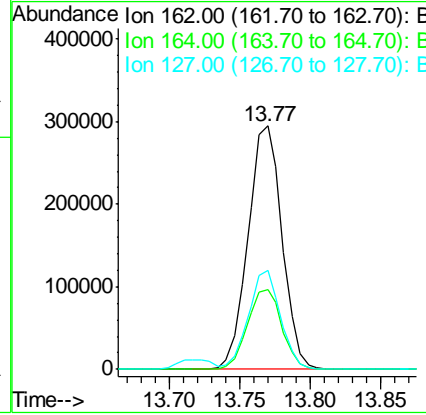
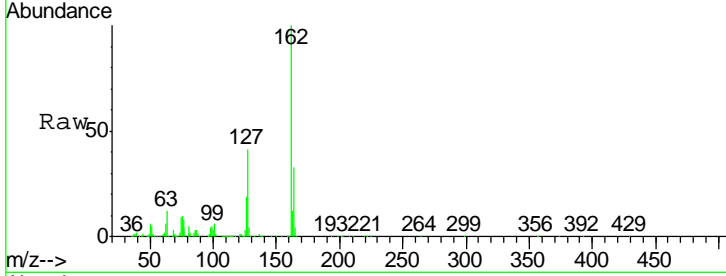




#41
 2-Chloronaphthalene
 Concen: 20.22 ng/ul
 RT: 13.77 min Scan# 1860
 Delta R.T. 0.00 min
 Lab File: BG024794.D
 Acq: 15 Nov 2016 13:11

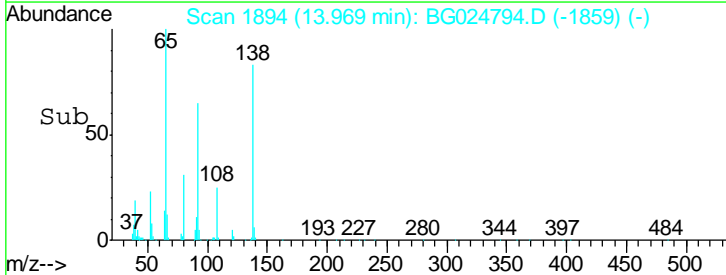
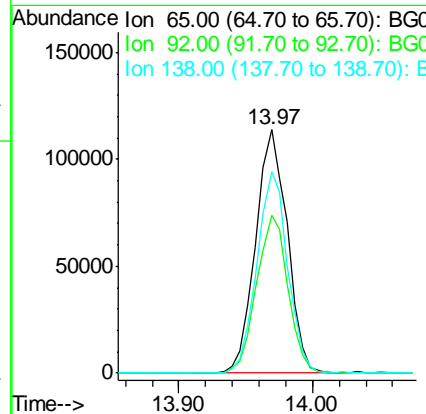
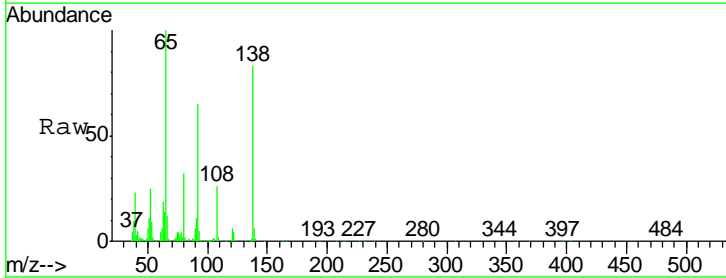
Instrument :
 BNA_G
 ClientSampled :
 SSTD02011

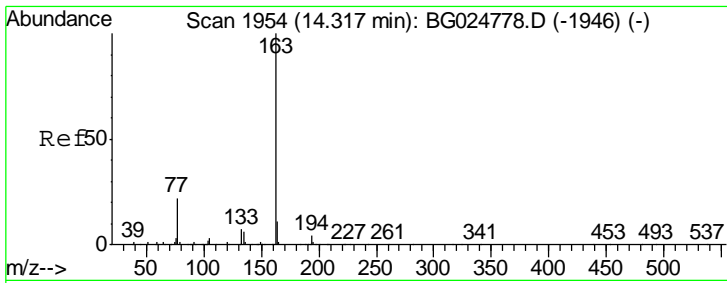
Tgt Ion	Resp	Lower	Upper
162	100		
164	32.7	25.0	37.6
127	40.9	30.7	46.1



#42
 2-Nitroaniline
 Concen: 19.00 ng/ul
 RT: 13.97 min Scan# 1894
 Delta R.T. 0.00 min
 Lab File: BG024794.D
 Acq: 15 Nov 2016 13:11

Tgt Ion	Resp	Lower	Upper
65	100		
92	65.1	50.9	76.3
138	82.9	61.8	92.6

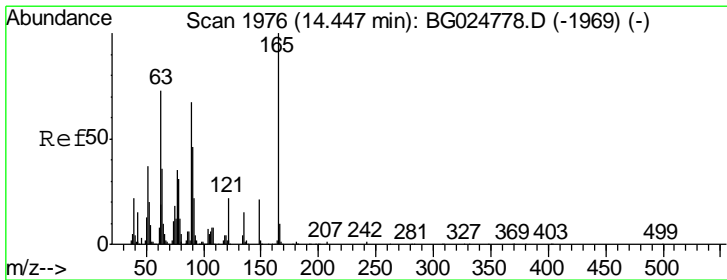
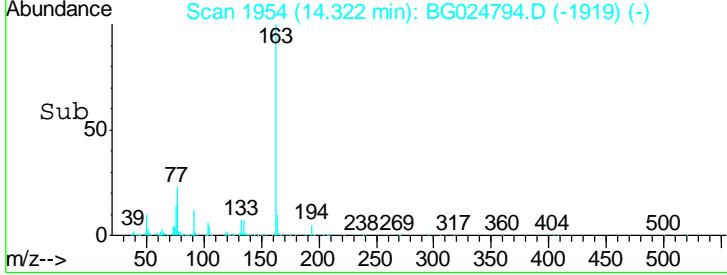
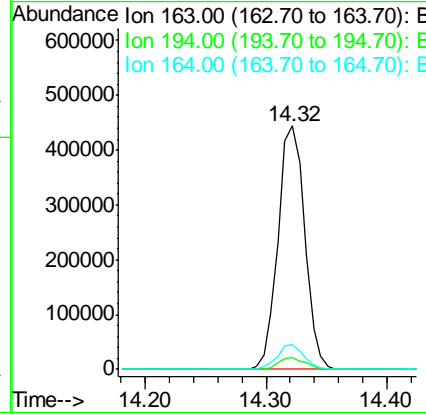
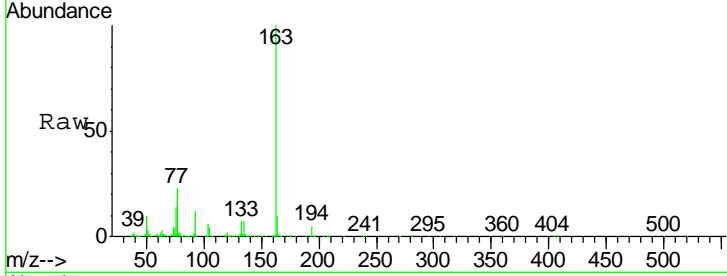




#44
 Dimethylphthalate
 Concen: 19.66 ng/ul
 RT: 14.32 min Scan# 1954
 Delta R.T. 0.00 min
 Lab File: BG024794.D
 Acq: 15 Nov 2016 13:11

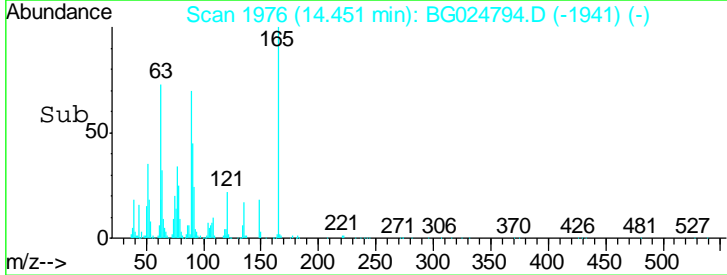
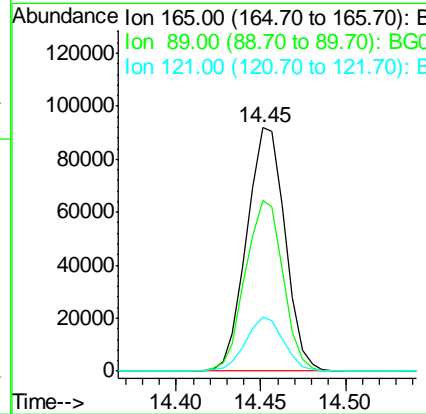
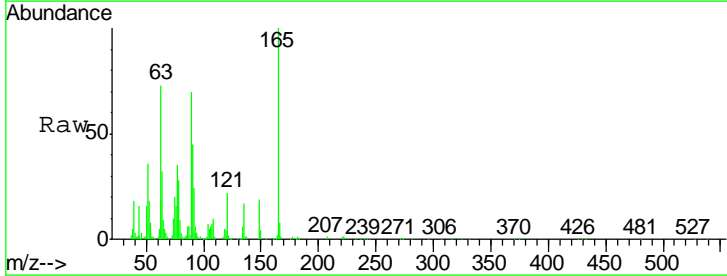
Instrument :
 BNA_G
 ClientSampleId :
 SST02011

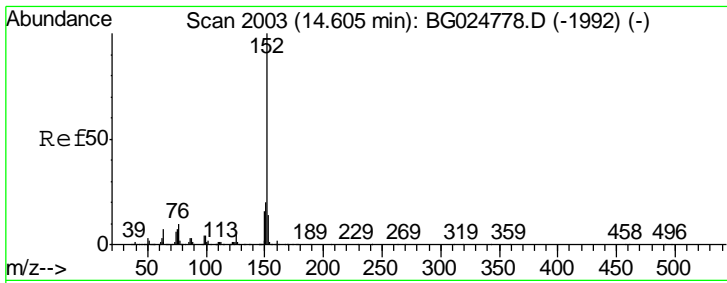
Tgt Ion	Resp	Lower	Upper
163	100		
194	5.0	3.4	5.0
164	10.2	9.0	13.4



#45
 2,6-Dinitrotoluene
 Concen: 20.04 ng/ul
 RT: 14.45 min Scan# 1976
 Delta R.T. 0.00 min
 Lab File: BG024794.D
 Acq: 15 Nov 2016 13:11

Tgt Ion	Resp	Lower	Upper
165	100		
89	69.8	52.9	79.3
121	22.1	22.2	33.4#

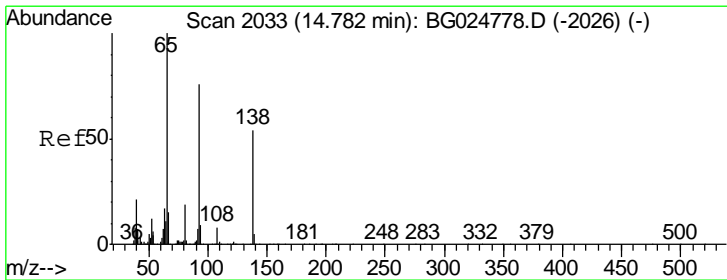
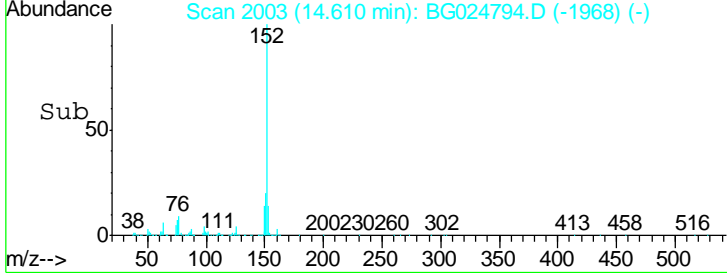
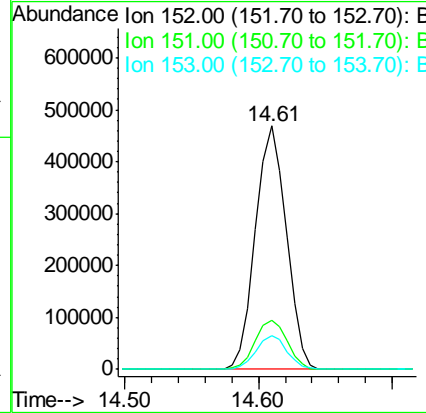
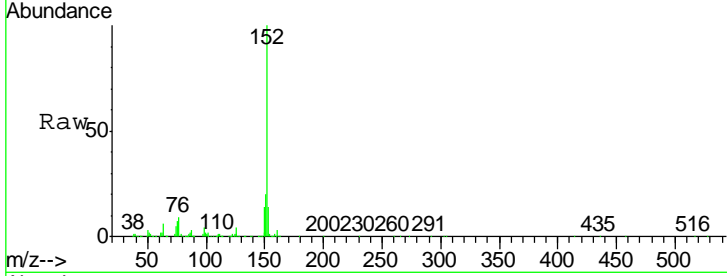




#47
 Acenaphthylene
 Concen: 19.80 ng/ul
 RT: 14.61 min Scan# 2003
 Delta R.T. 0.00 min
 Lab File: BG024794.D
 Acq: 15 Nov 2016 13:11

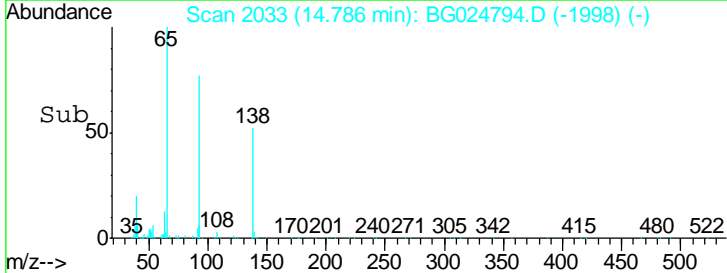
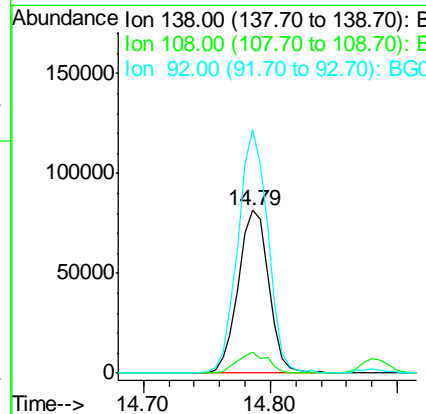
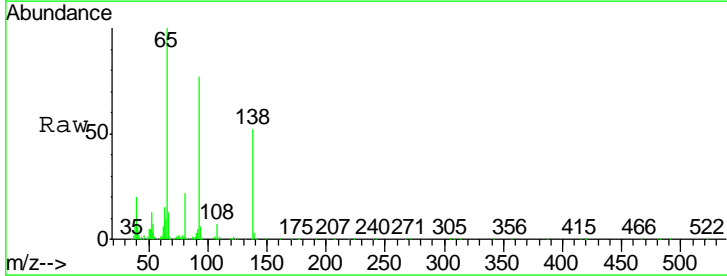
Instrument :
 BNA_G
 ClientSampled :
 SST02011

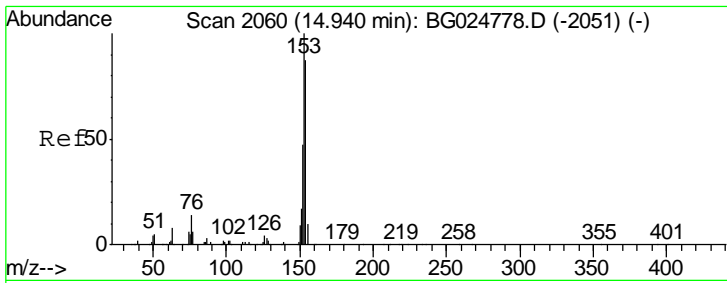
Tgt Ion	Resp	Lower	Upper
152	748972		
151	20.3	16.7	25.1
153	13.9	11.4	17.2



#48
 3-Nitroaniline
 Concen: 20.23 ng/ul
 RT: 14.79 min Scan# 2033
 Delta R.T. 0.00 min
 Lab File: BG024794.D
 Acq: 15 Nov 2016 13:11

Tgt Ion	Resp	Lower	Upper
138	135178		
108	13.0	6.3	9.5#
92	149.9	106.4	159.6

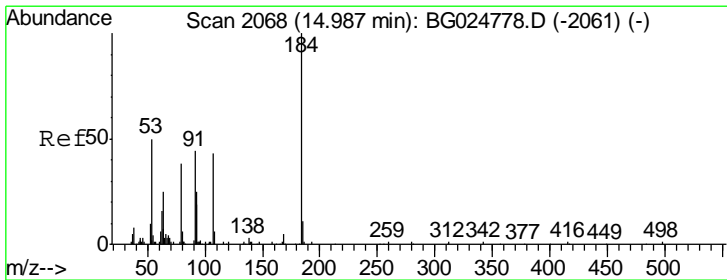
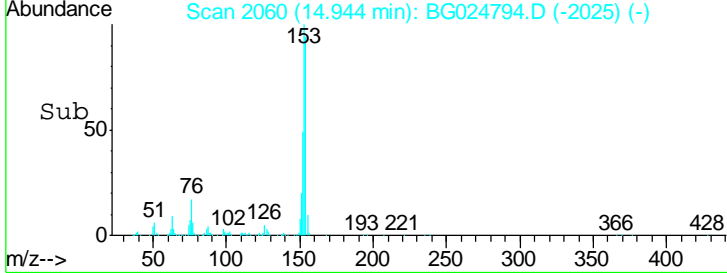
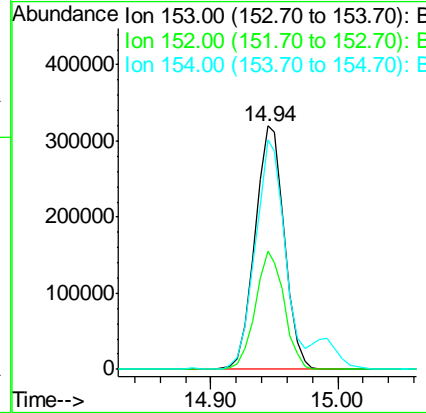
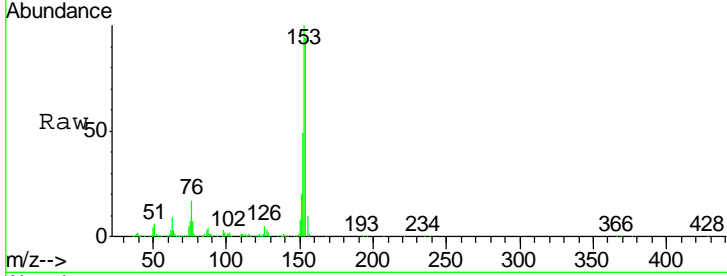




#49
 Acenaphthene
 Concen: 19.21 ng/ul
 RT: 14.94 min Scan# 2060
 Delta R.T. 0.00 min
 Lab File: BG024794.D
 Acq: 15 Nov 2016 13:11

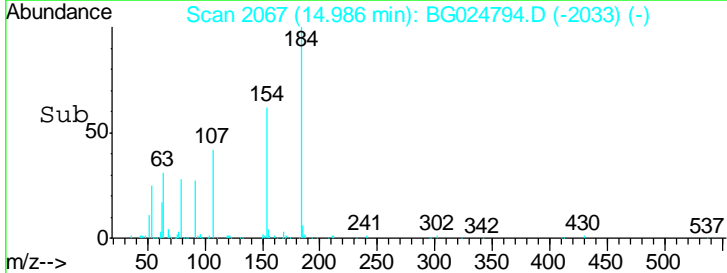
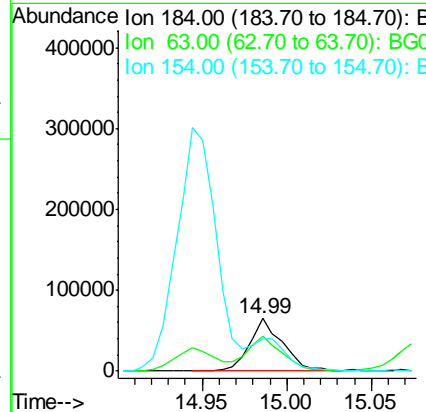
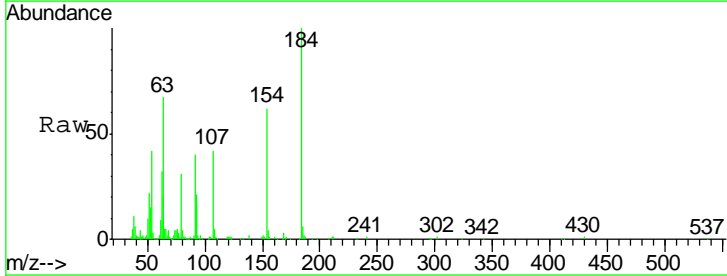
Instrument :
 BNA_G
 ClientSampled :
 SSTD02011

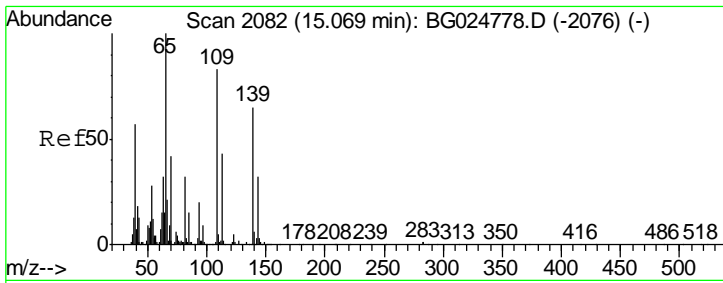
Tgt Ion	Resp	Lower	Upper
153	514499		
152	48.7	36.5	54.7
154	94.1	72.3	108.5



#50
 2,4-Dinitrophenol
 Concen: 17.12 ng/ul
 RT: 14.99 min Scan# 2067
 Delta R.T. -0.00 min
 Lab File: BG024794.D
 Acq: 15 Nov 2016 13:11

Tgt Ion	Resp	Lower	Upper
184	88589		
63	66.8	65.1	97.7
154	61.7	68.2	102.4#

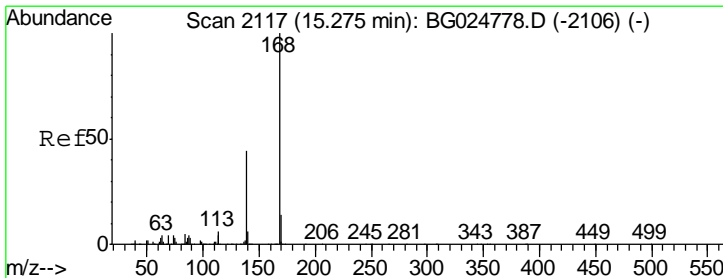
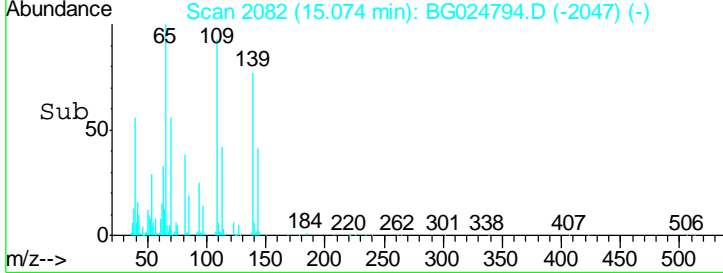
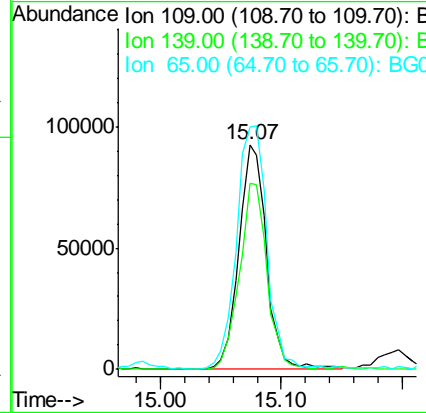
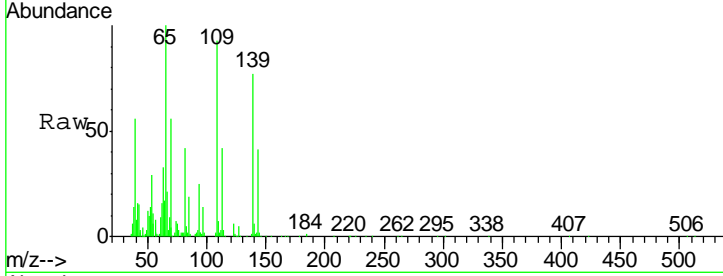




#52
 4-Nitrophenol
 Concen: 19.29 ng/ul
 RT: 15.07 min Scan# 2082
 Delta R.T. 0.00 min
 Lab File: BG024794.D
 Acq: 15 Nov 2016 13:11

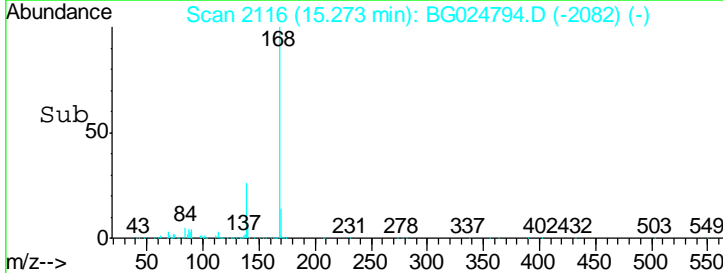
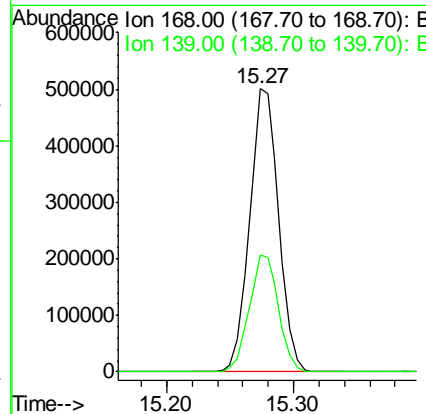
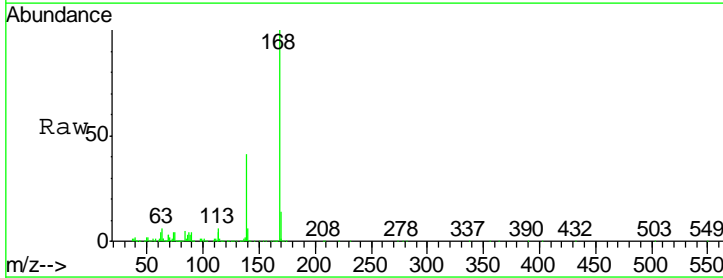
Instrument :
 BNA_G
 ClientSampled :
 SSTD02011

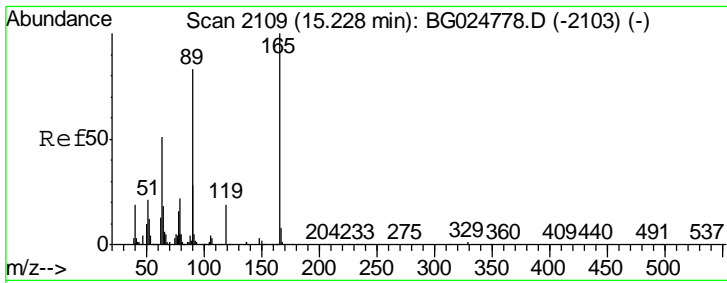
Tgt Ion	Resp	Lower	Upper
109	147383		
109	100		
139	82.4	62.6	93.8
65	107.7	90.4	135.6



#53
 Dibenzofuran
 Concen: 19.30 ng/ul
 RT: 15.27 min Scan# 2116
 Delta R.T. -0.00 min
 Lab File: BG024794.D
 Acq: 15 Nov 2016 13:11

Tgt Ion	Resp	Lower	Upper
168	790575		
168	100		
139	41.3	33.8	50.8

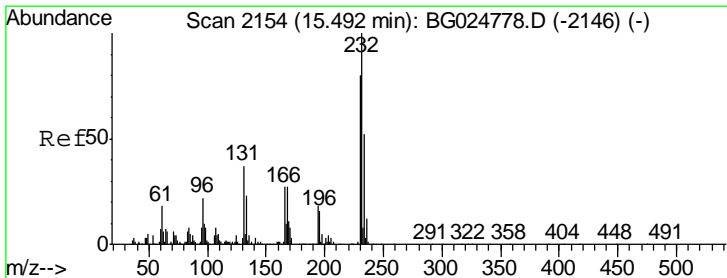
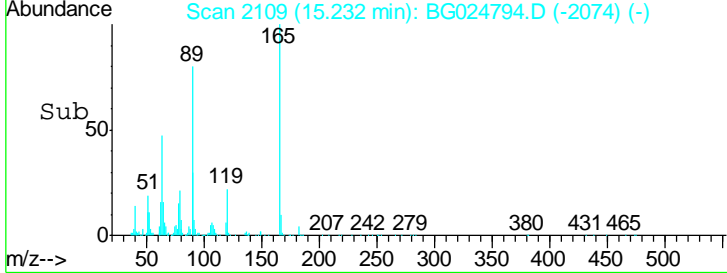
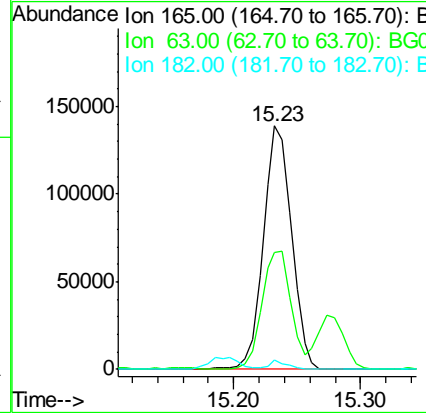
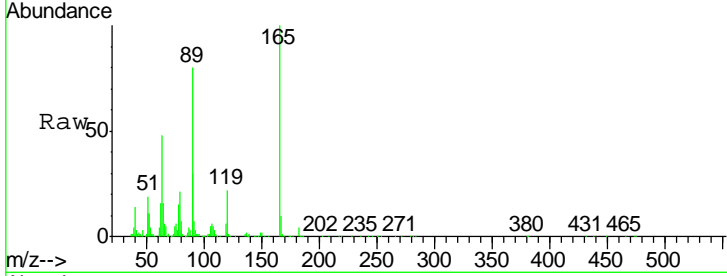




#54
 2,4-Dinitrotoluene
 Concen: 19.74 ng/ul
 RT: 15.23 min Scan# 2109
 Delta R.T. 0.00 min
 Lab File: BG024794.D
 Acq: 15 Nov 2016 13:11

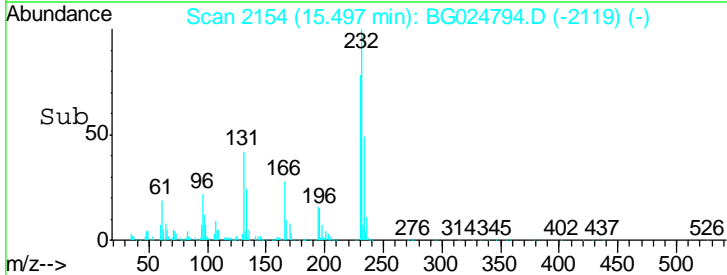
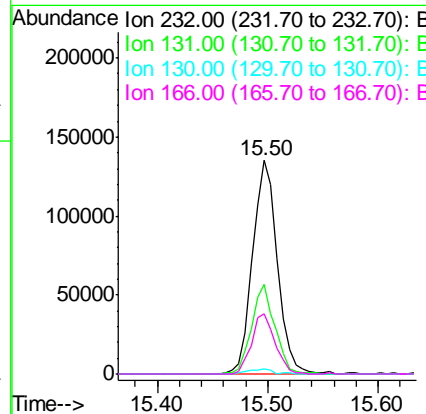
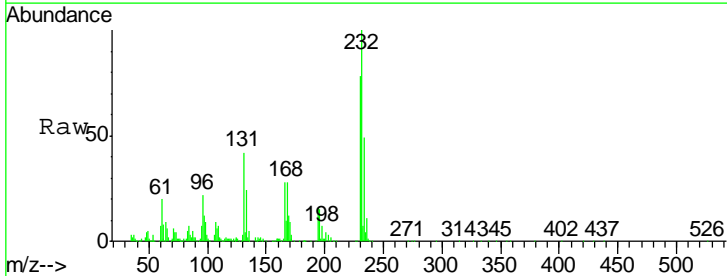
Instrument :
 BNA_G
 ClientSampled :
 SSTD02011

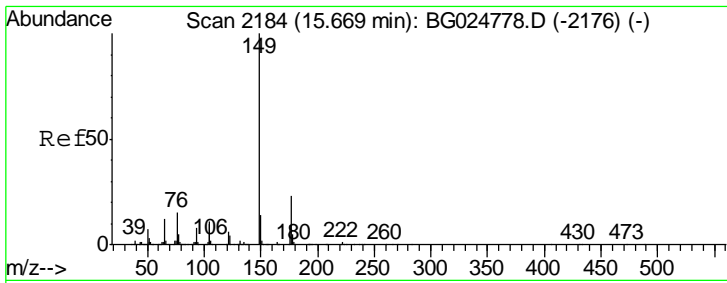
Tgt Ion	Resp	Lower	Upper
165	100		
63	47.9	46.8	70.2
182	3.9	1.8	2.6#



#55
 2,3,4,6-Tetrachlorophenol
 Concen: 19.53 ng/ul
 RT: 15.50 min Scan# 2154
 Delta R.T. 0.00 min
 Lab File: BG024794.D
 Acq: 15 Nov 2016 13:11

Tgt Ion	Resp	Lower	Upper
232	100		
131	41.7	33.3	49.9
130	2.7	1.8	2.6#
166	28.4	21.9	32.9

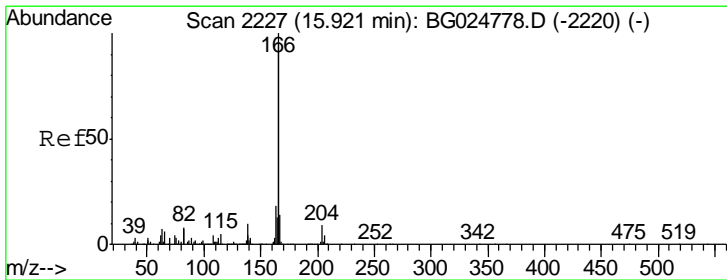
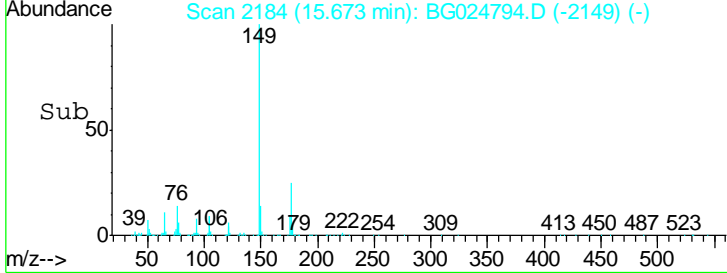
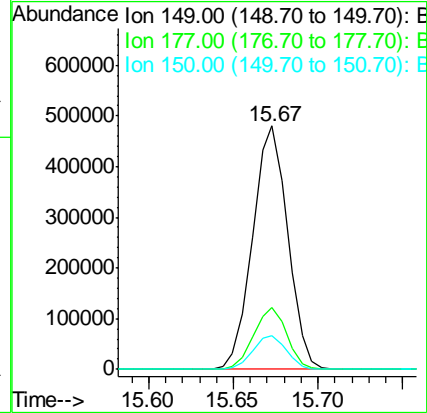
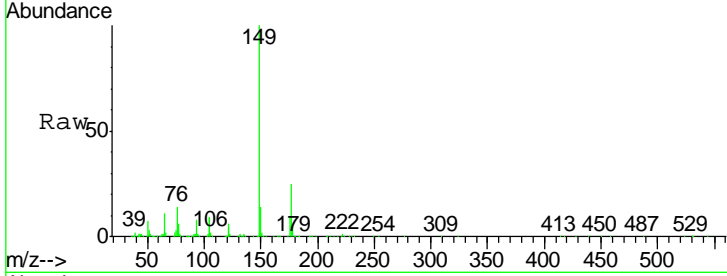




#56
 Diethylphthalate
 Concen: 18.99 ng/ul
 RT: 15.67 min Scan# 2184
 Delta R.T. 0.00 min
 Lab File: BG024794.D
 Acq: 15 Nov 2016 13:11

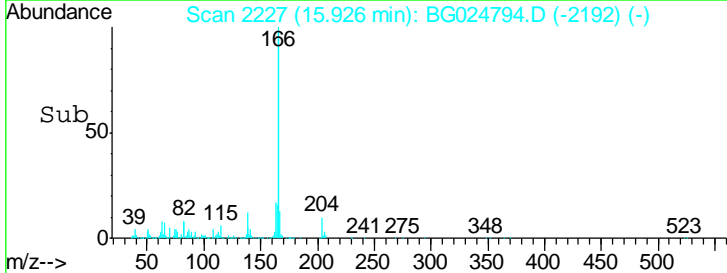
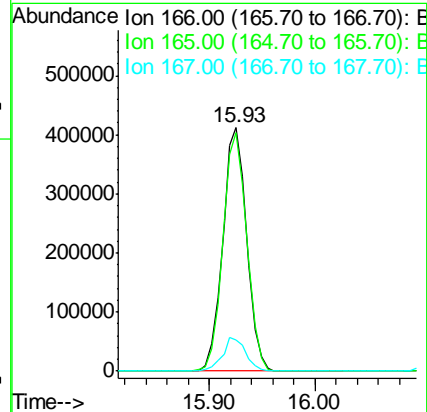
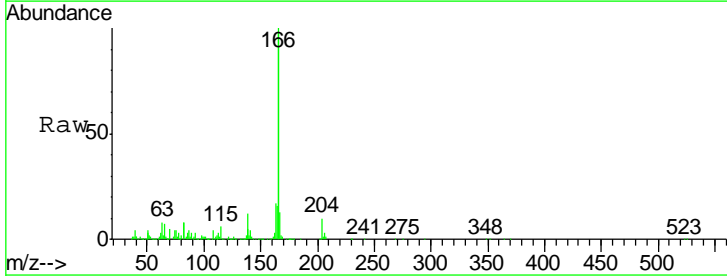
Instrument :
 BNA_G
 ClientSampled :
 SST02011

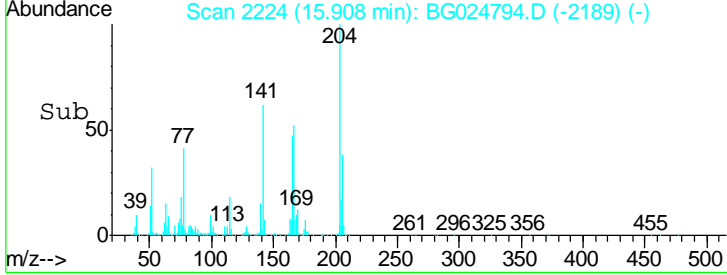
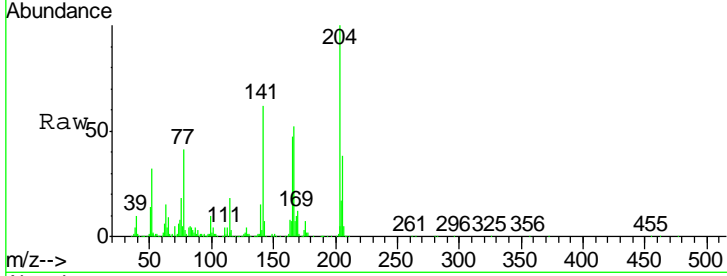
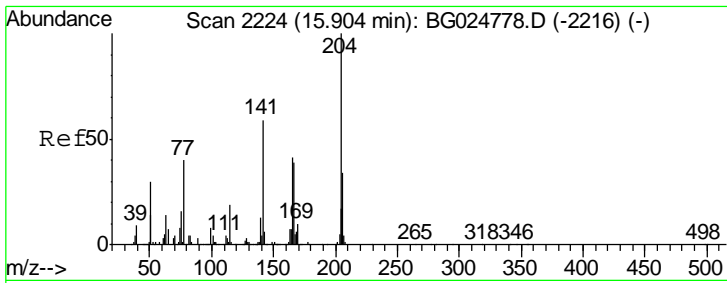
Tgt Ion	Resp	Lower	Upper
149	100		
177	25.3	17.8	26.8
150	13.7	10.2	15.4



#58
 Fluorene
 Concen: 19.51 ng/ul
 RT: 15.93 min Scan# 2227
 Delta R.T. 0.00 min
 Lab File: BG024794.D
 Acq: 15 Nov 2016 13:11

Tgt Ion	Resp	Lower	Upper
166	100		
165	98.1	79.7	119.5
167	12.9	11.4	17.2

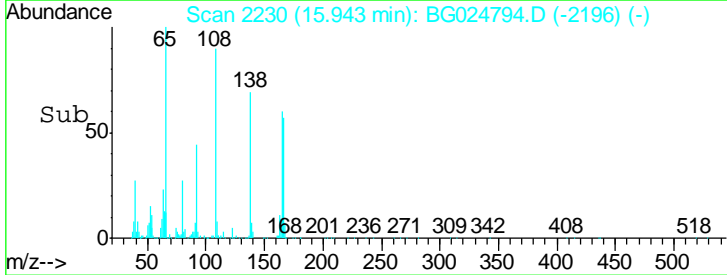
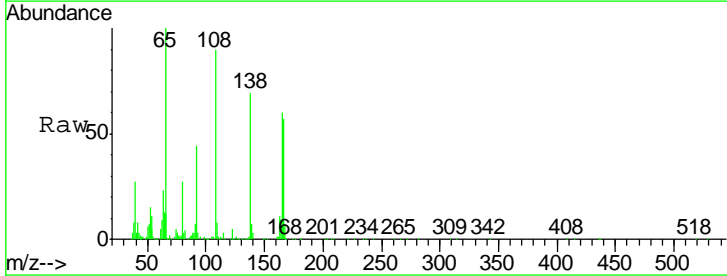
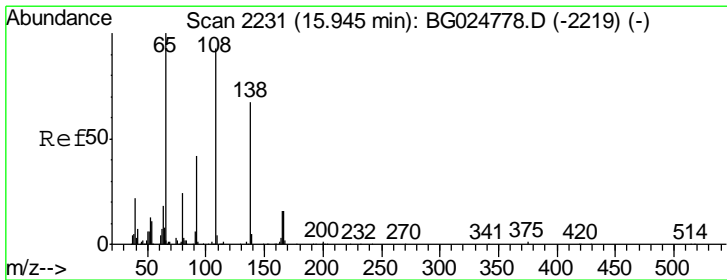
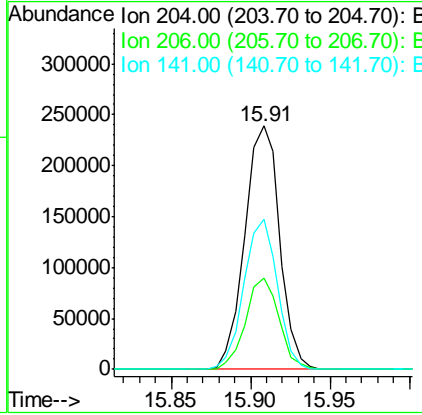




#59
 4-Chlorophenyl-phenylether
 Concen: 19.38 ng/ul
 RT: 15.91 min Scan# 2224
 Delta R.T. 0.00 min
 Lab File: BG024794.D
 Acq: 15 Nov 2016 13:11

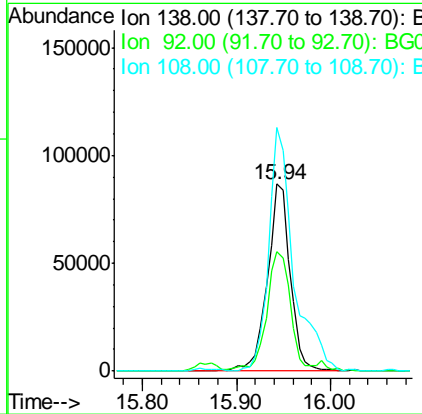
Instrument :
 BNA_G
 ClientSampled :
 SSTD02011

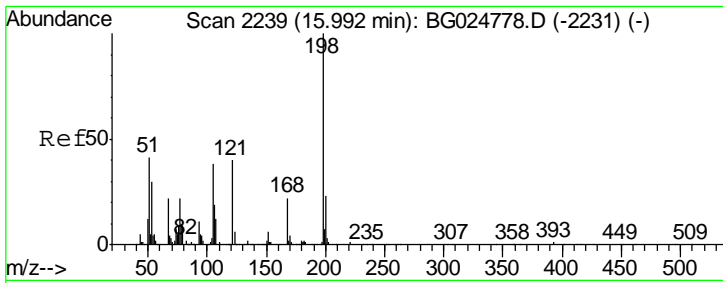
Tgt Ion	Resp	Lower	Upper
204	364468		
206	37.6	32.3	48.5
141	61.7	57.5	86.3



#60
 4-Nitroaniline
 Concen: 19.16 ng/ul
 RT: 15.94 min Scan# 2230
 Delta R.T. -0.00 min
 Lab File: BG024794.D
 Acq: 15 Nov 2016 13:11

Tgt Ion	Resp	Lower	Upper
138	145606		
92	63.6	56.9	85.3
108	130.1	104.9	157.3

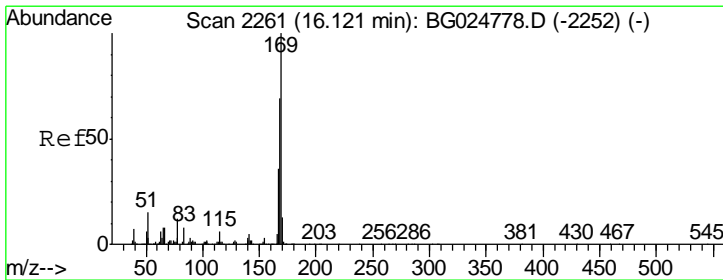
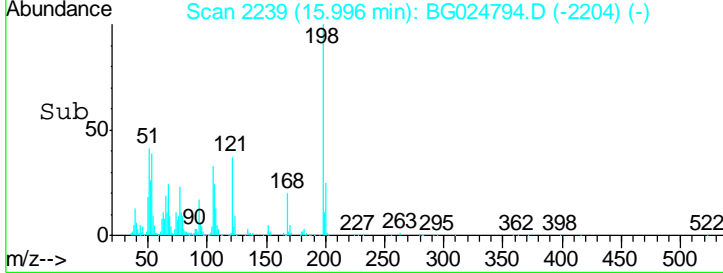
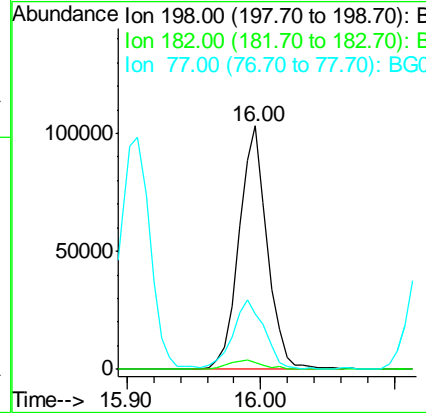
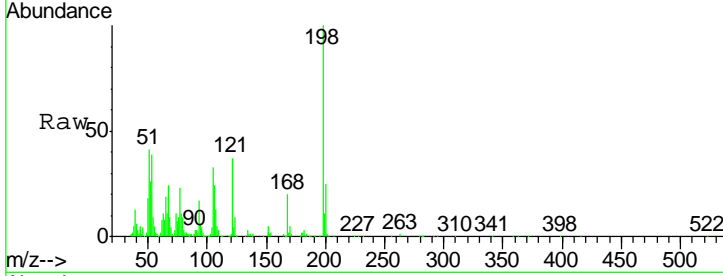




#63
 4,6-Dinitro-2-methylphenol
 Concen: 19.65 ng/ul
 RT: 16.00 min Scan# 2239
 Delta R.T. 0.00 min
 Lab File: BG024794.D
 Acq: 15 Nov 2016 13:11

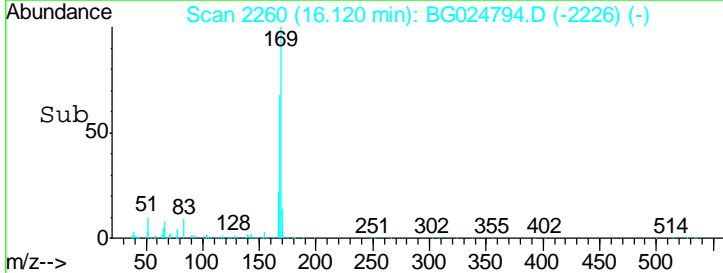
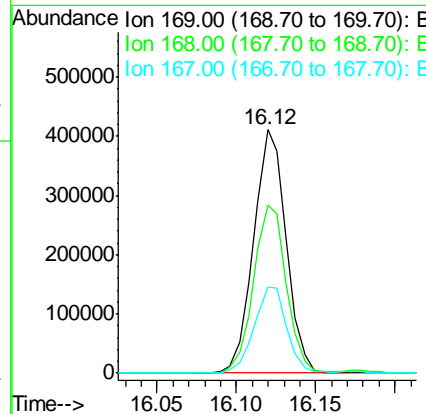
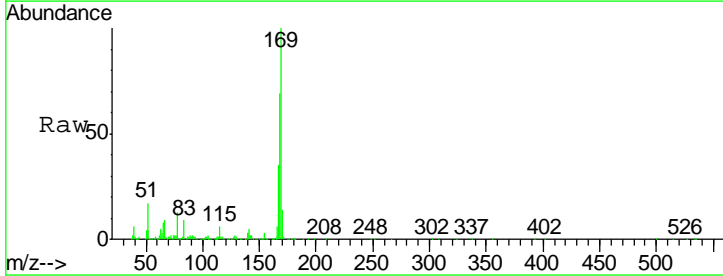
Instrument :
 BNA_G
 ClientSampled :
 SSTD02011

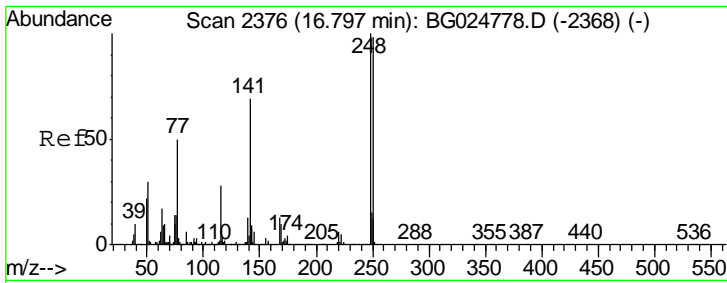
Tgt Ion	Resp	Lower	Upper
198	100		
182	2.6	5.8	6.4#
77	22.5	22.1	33.9



#64
 N-Nitrosodiphenylamine
 Concen: 19.71 ng/ul
 RT: 16.12 min Scan# 2260
 Delta R.T. -0.00 min
 Lab File: BG024794.D
 Acq: 15 Nov 2016 13:11

Tgt Ion	Resp	Lower	Upper
169	100		
168	69.0	59.1	88.7
167	35.4	29.7	44.5

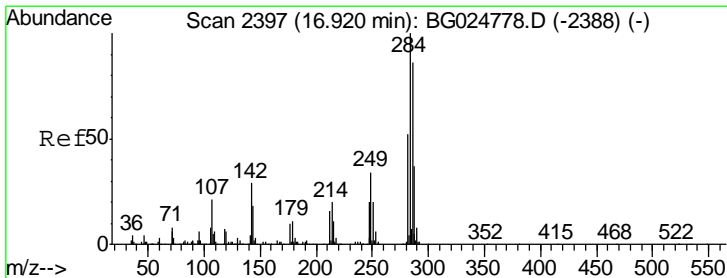
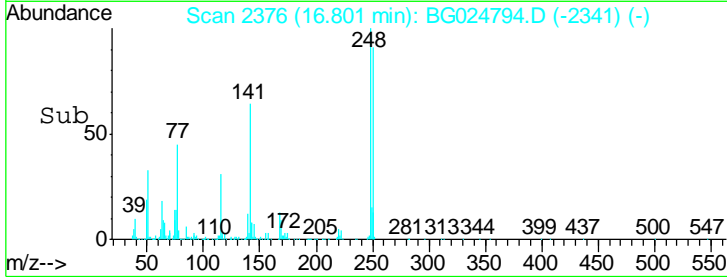
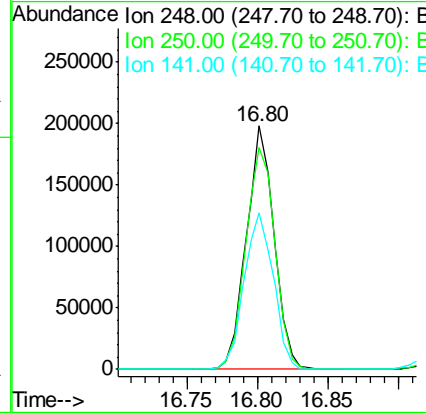
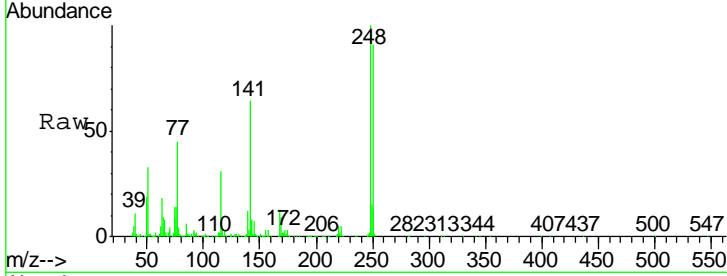




#65
 4-Bromophenyl-phenylether
 Concen: 20.38 ng/ul
 RT: 16.80 min Scan# 2376
 Delta R.T. 0.00 min
 Lab File: BG024794.D
 Acq: 15 Nov 2016 13:11

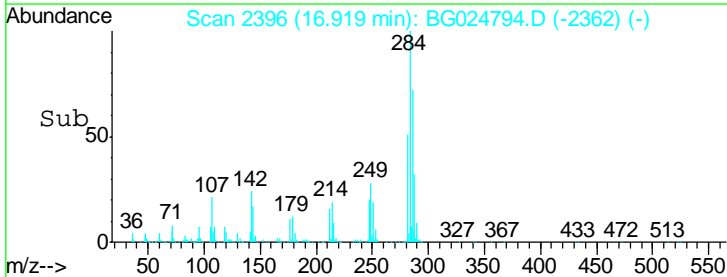
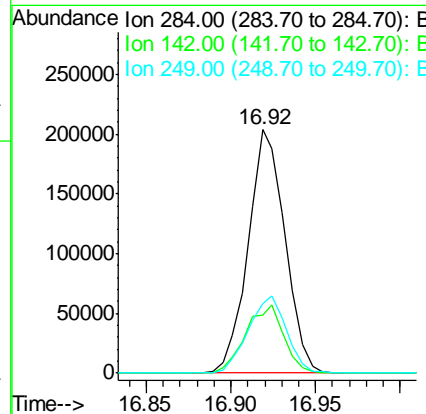
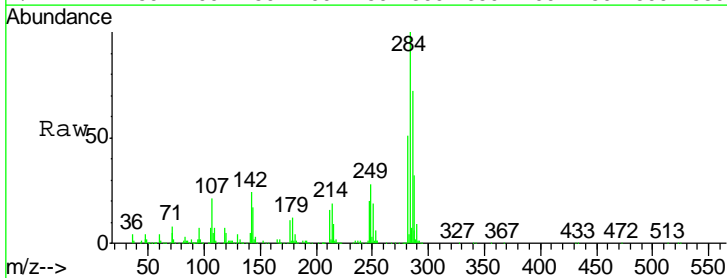
Instrument :
 BNA_G
 ClientSampled :
 SSTD02011

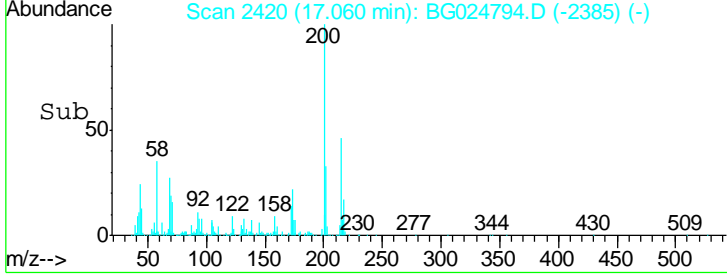
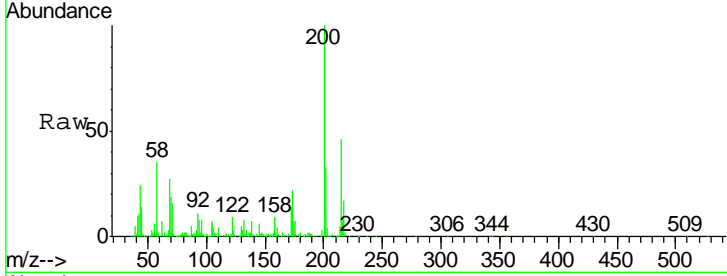
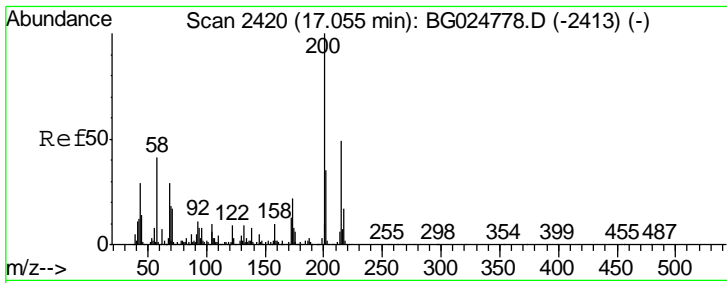
Tgt Ion	Resp	Lower	Upper
248	100		
250	91.4	71.9	107.9
141	64.2	53.8	80.8



#66
 Hexachlorobenzene
 Concen: 20.84 ng/ul
 RT: 16.92 min Scan# 2396
 Delta R.T. -0.00 min
 Lab File: BG024794.D
 Acq: 15 Nov 2016 13:11

Tgt Ion	Resp	Lower	Upper
284	100		
142	23.7	26.1	39.1#
249	28.4	25.9	38.9

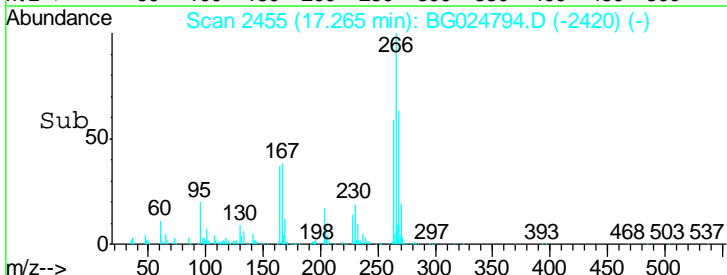
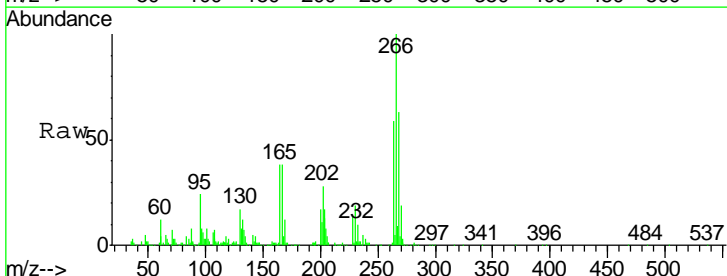
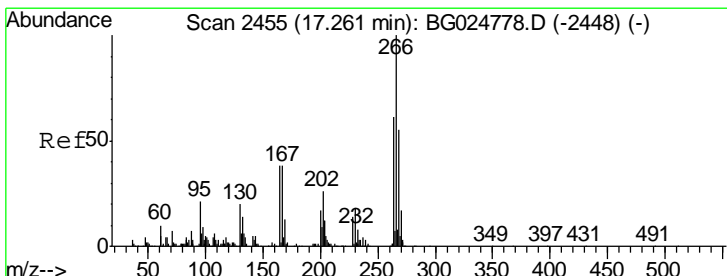
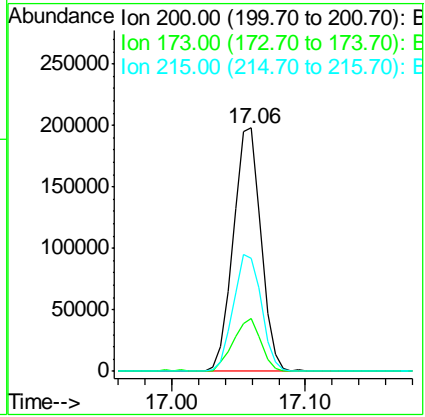




#67
 Atrazine
 Concen: 20.54 ng/ul
 RT: 17.06 min Scan# 2420
 Delta R.T. 0.00 min
 Lab File: BG024794.D
 Acq: 15 Nov 2016 13:11

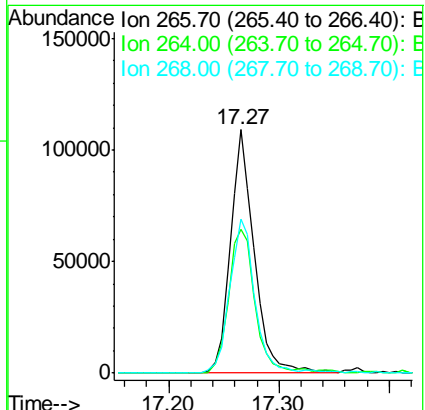
Instrument :
 BNA_G
 ClientSampled :
 SSTD02011

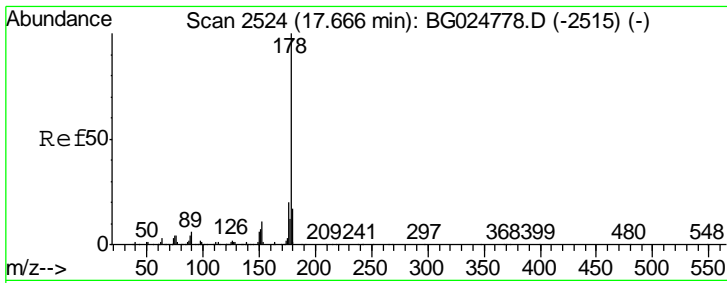
Tgt Ion	Resp	Lower	Upper
200	285864		
173	21.7	19.2	28.8
215	46.5	40.3	60.5



#68
 Pentachlorophenol
 Concen: 18.98 ng/ul
 RT: 17.27 min Scan# 2455
 Delta R.T. 0.00 min
 Lab File: BG024794.D
 Acq: 15 Nov 2016 13:11

Tgt Ion	Resp	Lower	Upper
266	165719		
264	59.3	47.1	70.7
268	63.5	56.2	84.4



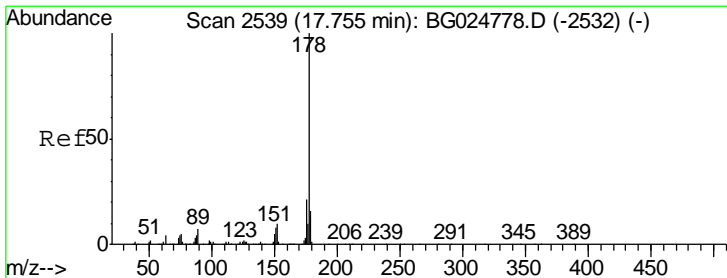
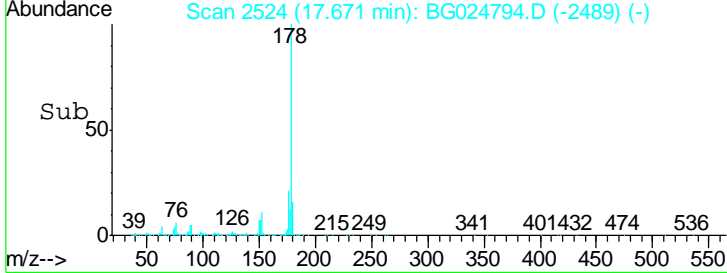
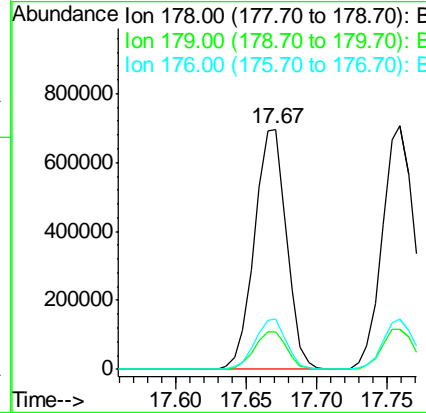
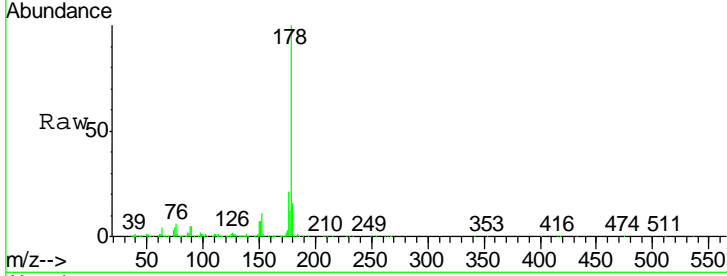


#69
 Phenanthrene
 Concen: 20.35 ng/ul
 RT: 17.67 min Scan# 2524
 Delta R.T. 0.00 min
 Lab File: BG024794.D
 Acq: 15 Nov 2016 13:11

Instrument :
 BNA_G
 ClientSampled :
 SSTD02011

Tgt Ion:178 Resp: 1114779

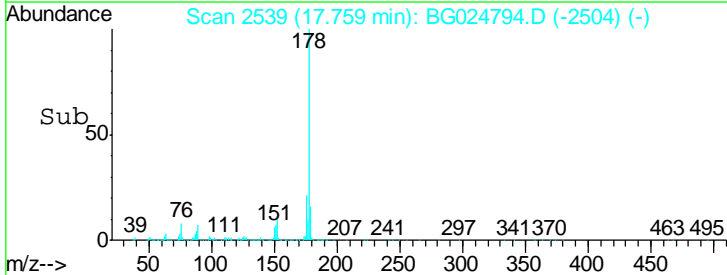
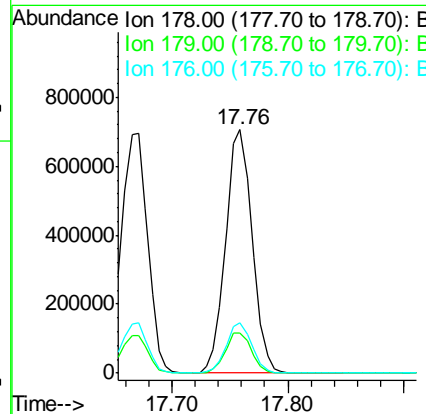
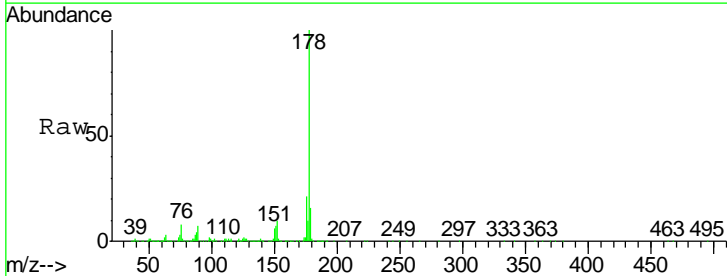
Ion	Ratio	Lower	Upper
178	100		
179	15.8	12.4	18.6
176	21.2	16.5	24.7

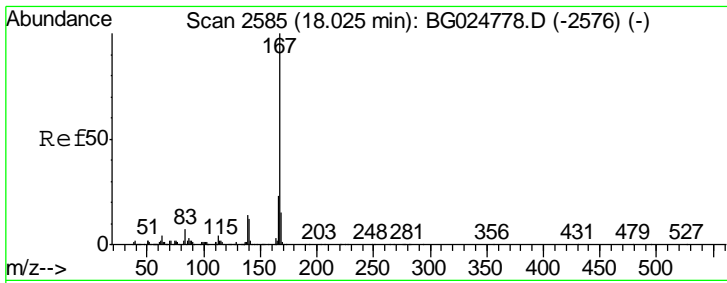


#71
 Anthracene
 Concen: 19.85 ng/ul
 RT: 17.76 min Scan# 2539
 Delta R.T. 0.00 min
 Lab File: BG024794.D
 Acq: 15 Nov 2016 13:11

Tgt Ion:178 Resp: 1124791

Ion	Ratio	Lower	Upper
178	100		
179	16.5	12.6	19.0
176	20.7	15.9	23.9

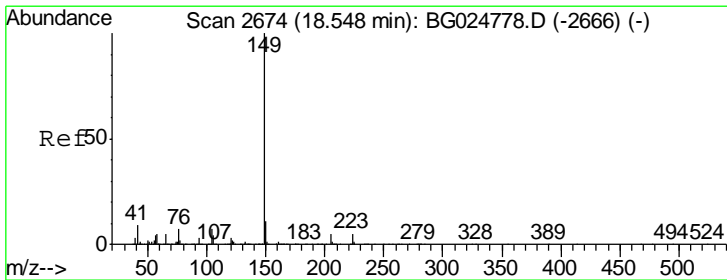
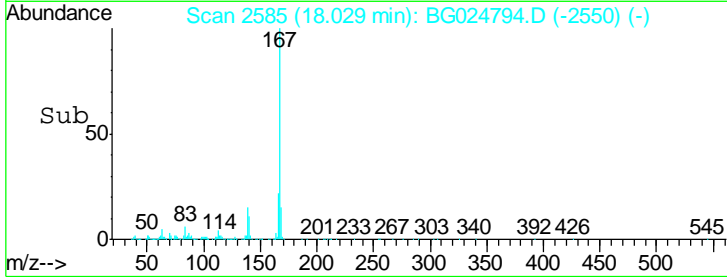
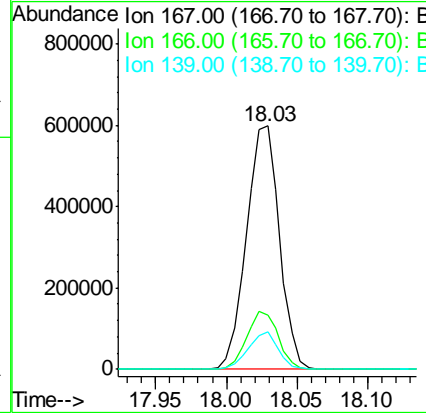
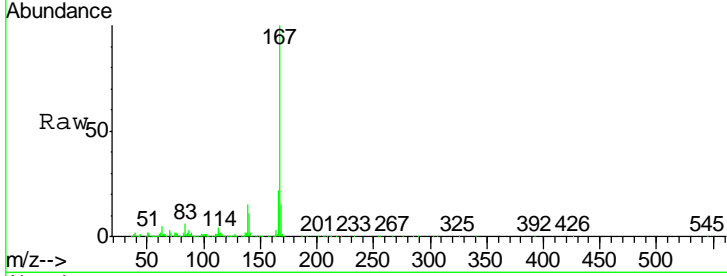




#72
 Carbazole
 Concen: 21.06 ng/ul
 RT: 18.03 min Scan# 2585
 Delta R.T. 0.00 min
 Lab File: BG024794.D
 Acq: 15 Nov 2016 13:11

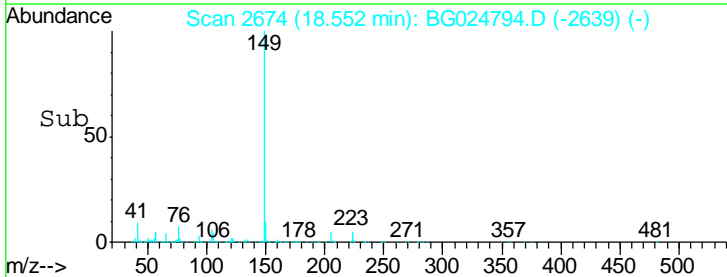
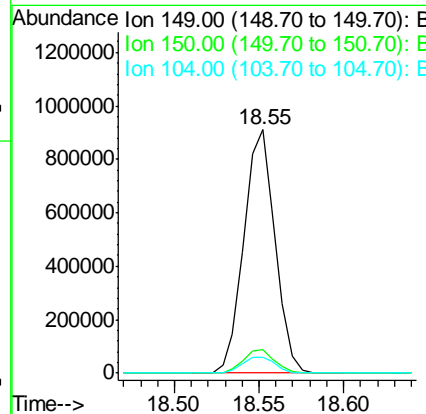
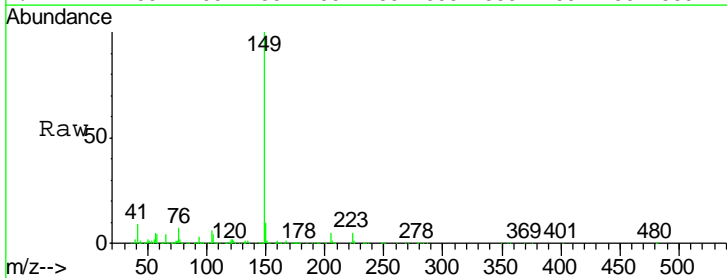
Instrument :
 BNA_G
 ClientSampled :
 SSTD02011

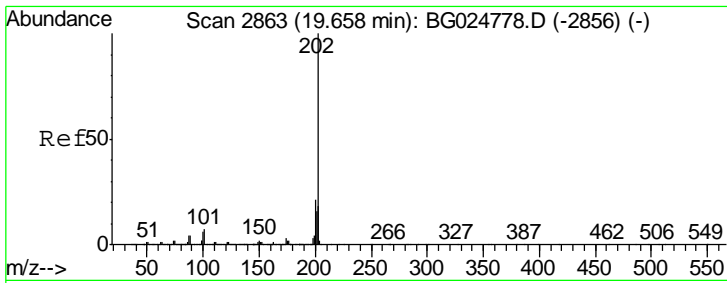
Tgt Ion	Resp	Lower	Upper
167	978913		
166	22.3	17.9	26.9
139	15.2	10.5	15.7



#73
 Di-n-butylphthalate
 Concen: 20.00 ng/ul
 RT: 18.55 min Scan# 2674
 Delta R.T. 0.00 min
 Lab File: BG024794.D
 Acq: 15 Nov 2016 13:11

Tgt Ion	Resp	Lower	Upper
149	1171204		
150	9.9	7.9	11.9
104	6.4	5.8	8.8



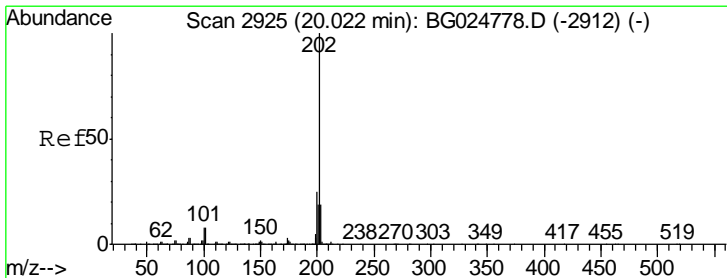
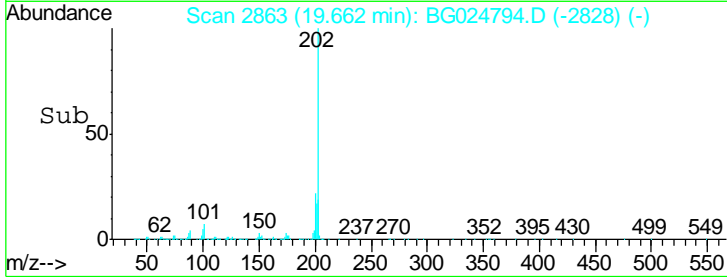
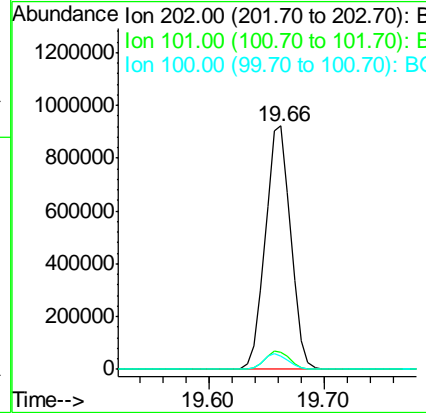
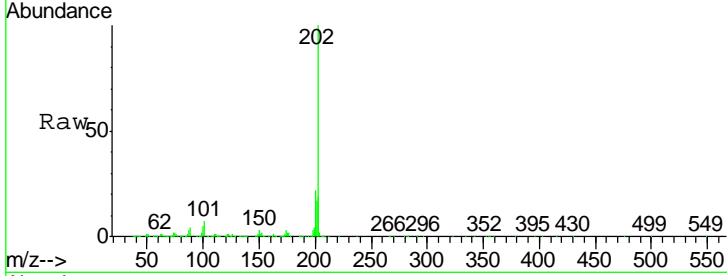


#74
 Fluoranthene
 Concen: 22.17 ng/ul
 RT: 19.66 min Scan# 2863
 Delta R.T. 0.00 min
 Lab File: BG024794.D
 Acq: 15 Nov 2016 13:11

Instrument :
 BNA_G
 ClientSampled :
 SST02011

Tgt Ion: 202 Resp: 1410532

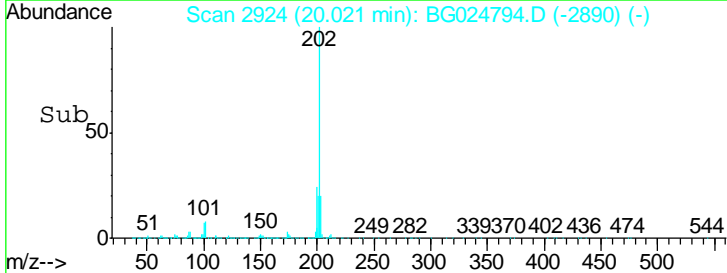
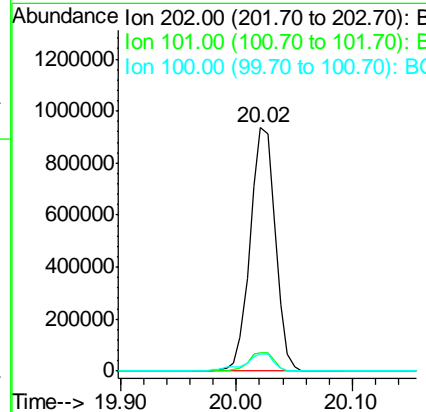
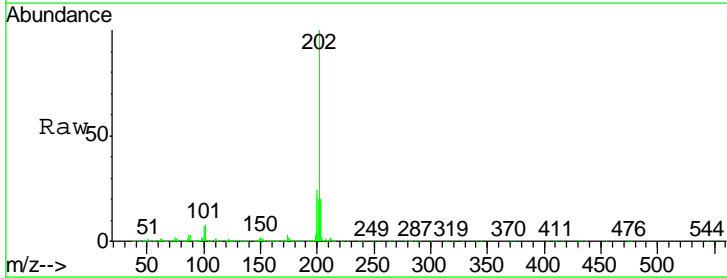
Ion	Ratio	Lower	Upper
202	100		
101	7.0	6.2	9.2
100	5.4	5.2	7.8

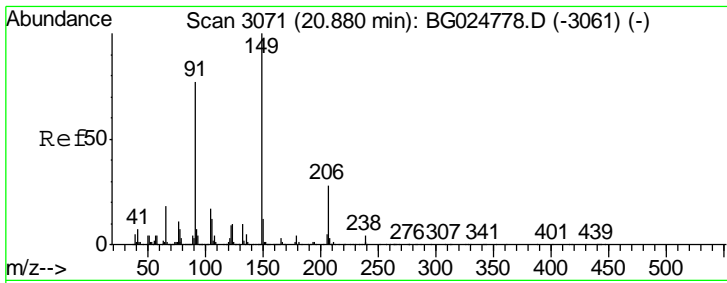


#77
 Pyrene
 Concen: 20.76 ng/ul
 RT: 20.02 min Scan# 2924
 Delta R.T. -0.00 min
 Lab File: BG024794.D
 Acq: 15 Nov 2016 13:11

Tgt Ion: 202 Resp: 1417900

Ion	Ratio	Lower	Upper
202	100		
101	7.7	6.9	10.3
100	7.0	6.6	10.0

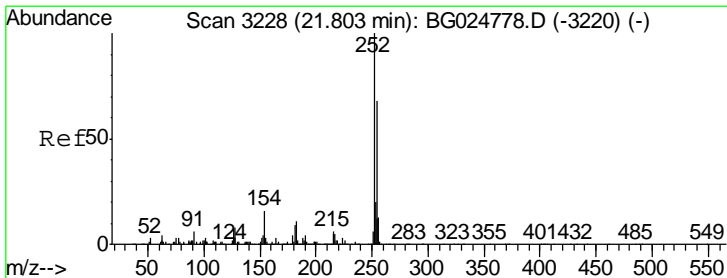
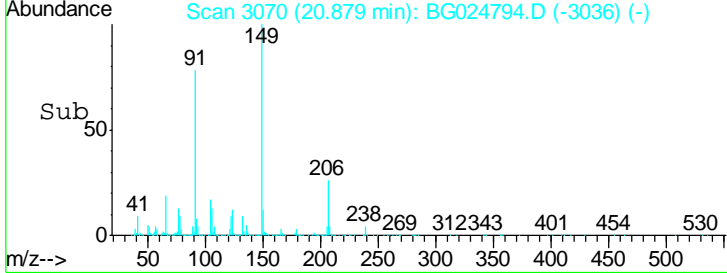
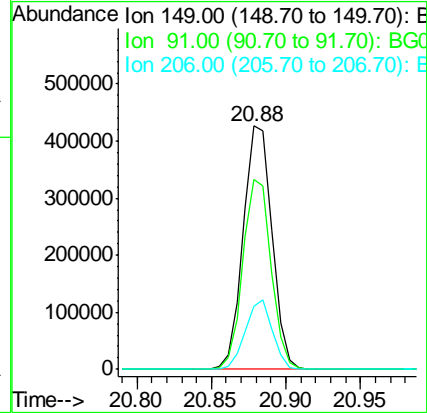
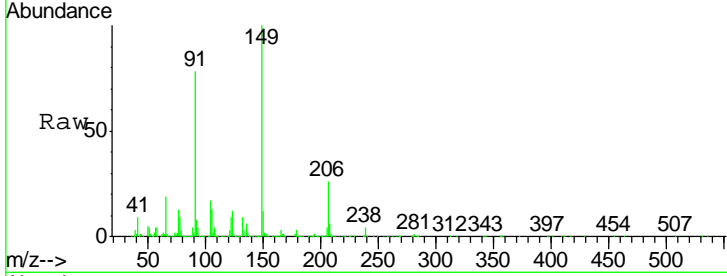




#78
 Butylbenzylphthalate
 Concen: 20.41 ng/ul
 RT: 20.88 min Scan# 3070
 Delta R.T. -0.00 min
 Lab File: BG024794.D
 Acq: 15 Nov 2016 13:11

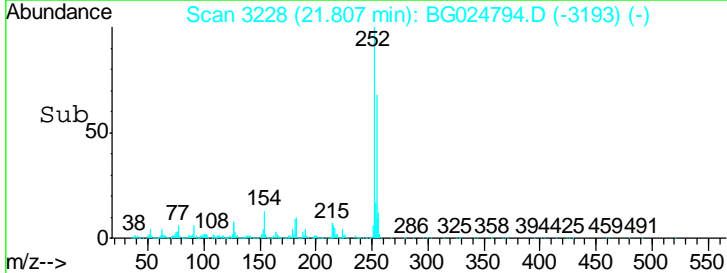
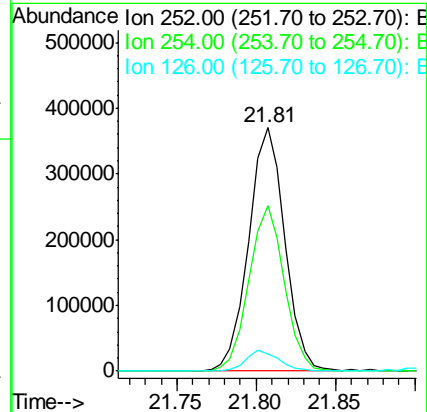
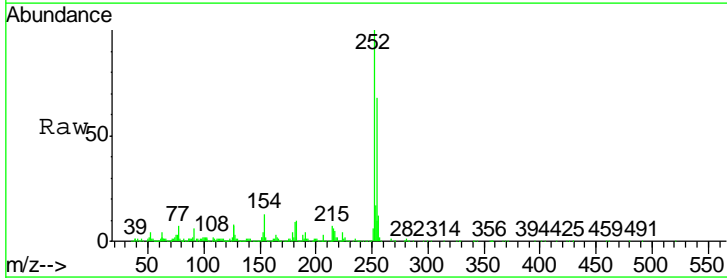
Instrument :
 BNA_G
 ClientSampled :
 SST02011

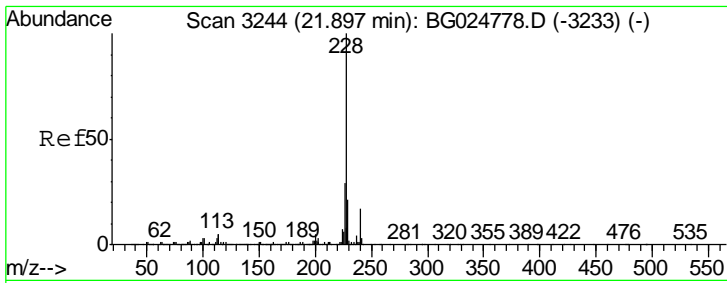
Tgt Ion	Resp	Lower	Upper
149	100		
91	78.2	65.8	98.6
206	25.9	20.1	30.1



#79
 3,3'-Dichlorobenzidine
 Concen: 21.92 ng/ul
 RT: 21.81 min Scan# 3228
 Delta R.T. 0.00 min
 Lab File: BG024794.D
 Acq: 15 Nov 2016 13:11

Tgt Ion	Resp	Lower	Upper
252	100		
254	68.0	49.0	73.6
126	7.0	5.1	7.7

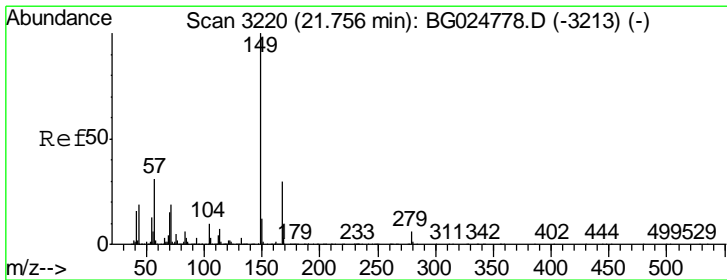
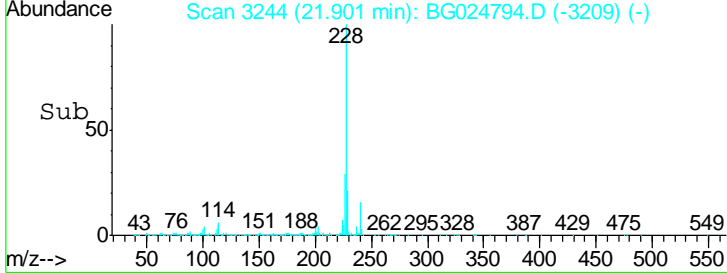
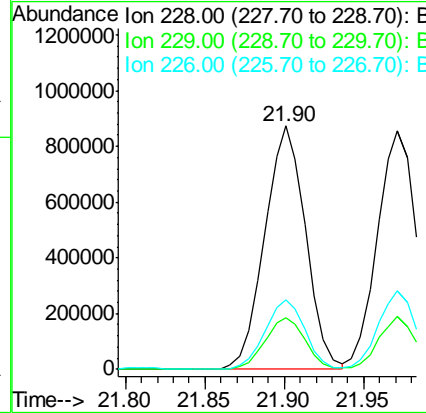
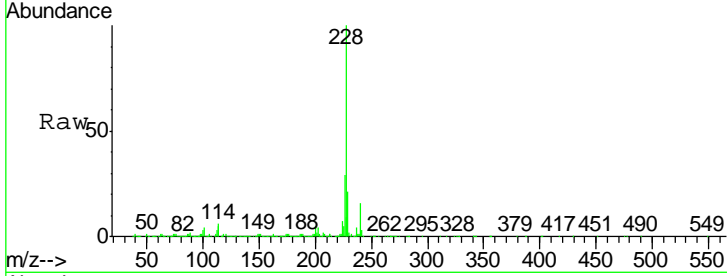




#80
 Benzo(a)anthracene
 Concen: 20.59 ng/ul
 RT: 21.90 min Scan# 3244
 Delta R.T. 0.00 min
 Lab File: BG024794.D
 Acq: 15 Nov 2016 13:11

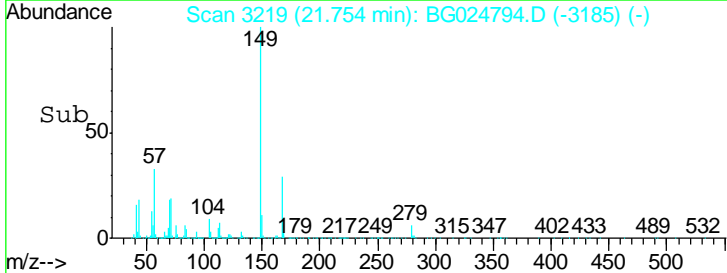
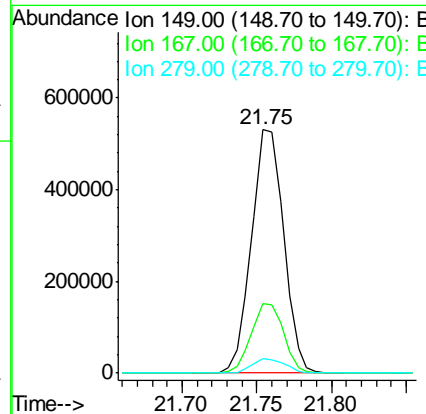
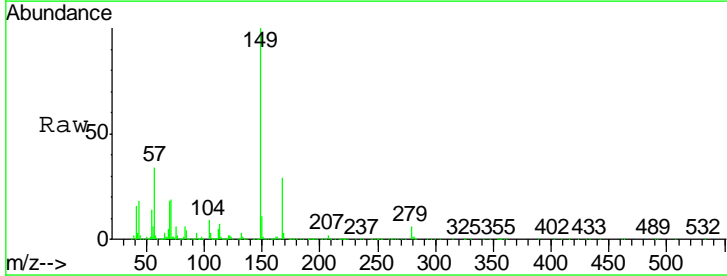
Instrument :
 BNA_G
 ClientSampleID :
 SSTD02011

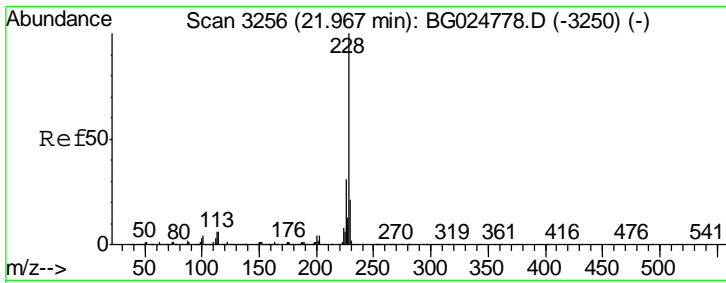
Tgt Ion	Resp	Lower	Upper
228	1556904		
229	21.0	16.3	24.5
226	28.6	21.9	32.9



#81
 Bis(2-ethylhexyl)phthalate
 Concen: 20.65 ng/ul
 RT: 21.75 min Scan# 3219
 Delta R.T. -0.00 min
 Lab File: BG024794.D
 Acq: 15 Nov 2016 13:11

Tgt Ion	Resp	Lower	Upper
149	789937		
167	28.6	21.8	32.8
279	6.0	4.5	6.7



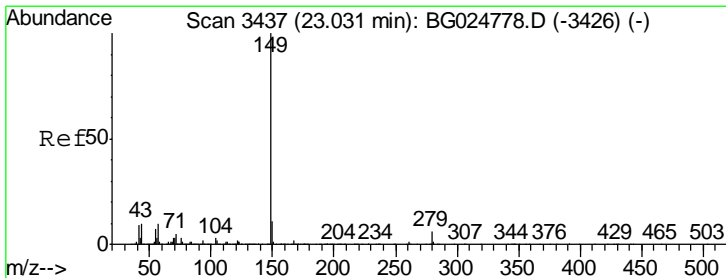
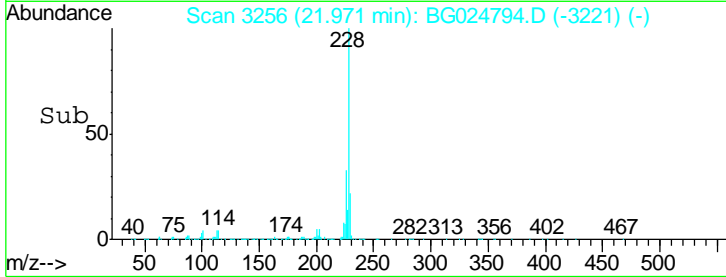
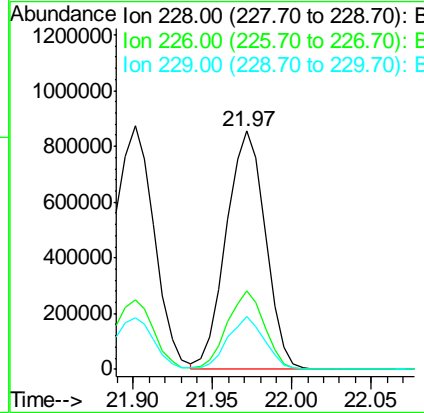
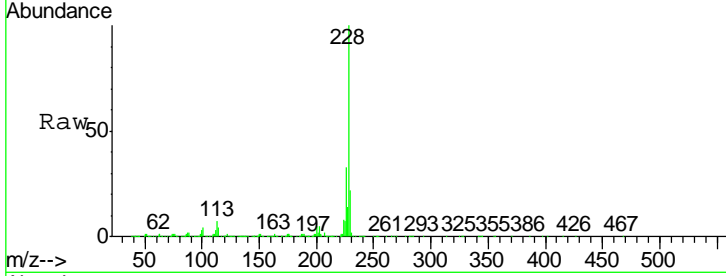


#82
 Chrysene
 Concen: 20.70 ng/ul
 RT: 21.97 min Scan# 3256
 Delta R.T. 0.00 min
 Lab File: BG024794.D
 Acq: 15 Nov 2016 13:11

Instrument :
 BNA_G
 ClientSampled :
 SST02011

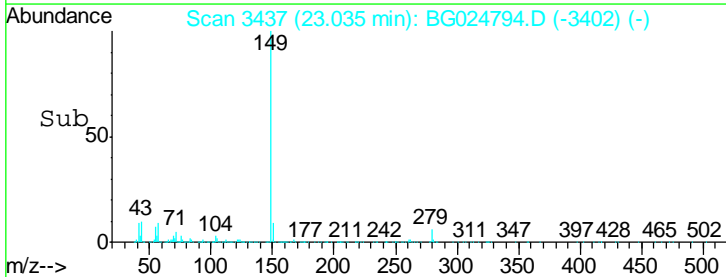
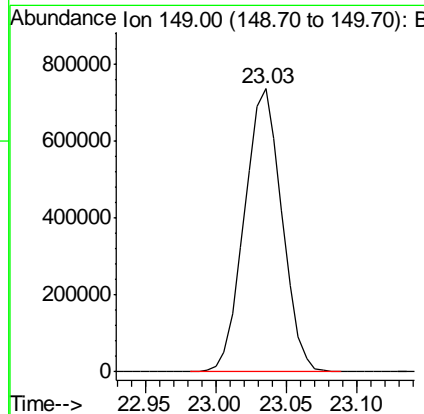
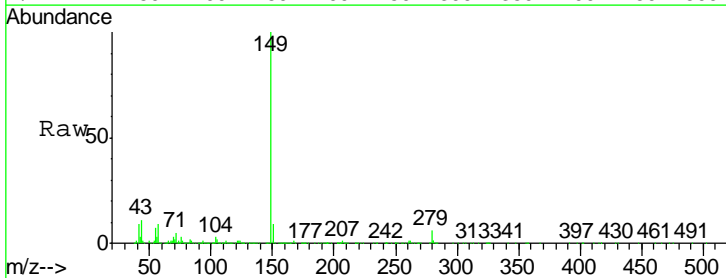
Tgt Ion: 228 Resp: 1467778

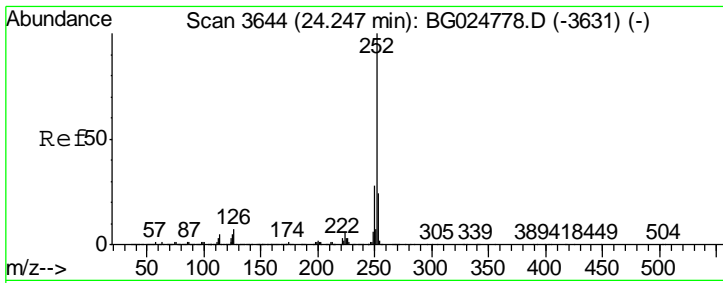
Ion	Ratio	Lower	Upper
228	100		
226	33.2	24.0	36.0
229	22.4	16.9	25.3



#84
 Di-n-octyl phthalate
 Concen: 21.89 ng/ul
 RT: 23.03 min Scan# 3437
 Delta R.T. 0.00 min
 Lab File: BG024794.D
 Acq: 15 Nov 2016 13:11

Tgt Ion: 149 Resp: 1367915



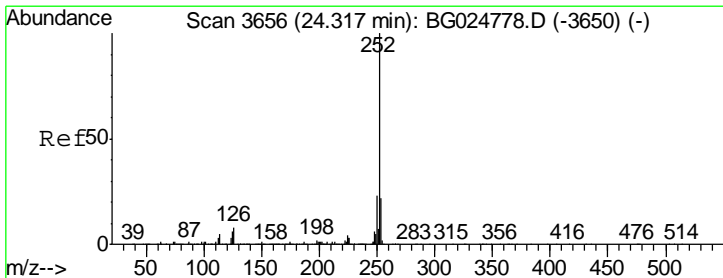
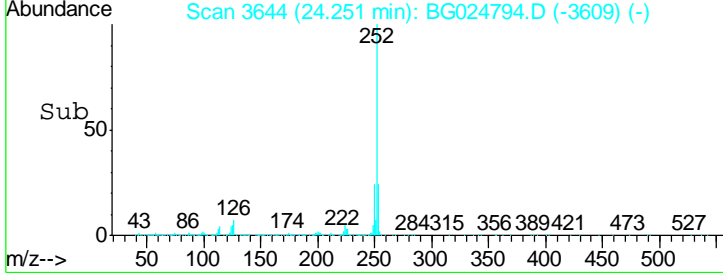
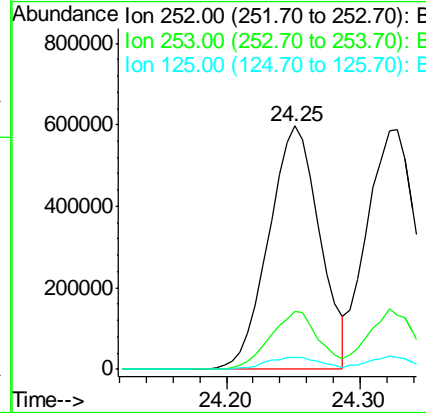
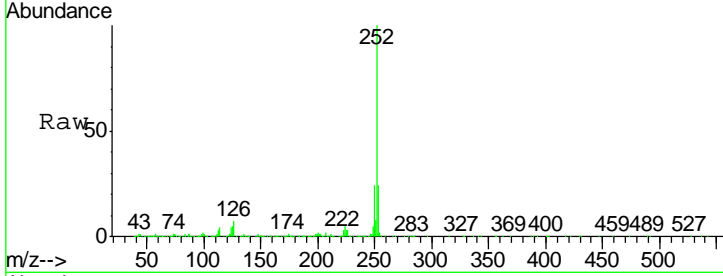


#85
 Benzo(b)fluoranthene
 Concen: 20.38 ng/ul
 RT: 24.25 min Scan# 3644
 Delta R.T. 0.00 min
 Lab File: BG024794.D
 Acq: 15 Nov 2016 13:11

Instrument :
 BNA_G
 ClientSampled :
 SSTD02011

Tgt Ion: 252 Resp: 1585044

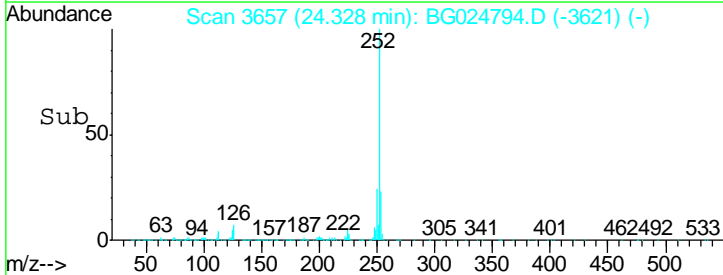
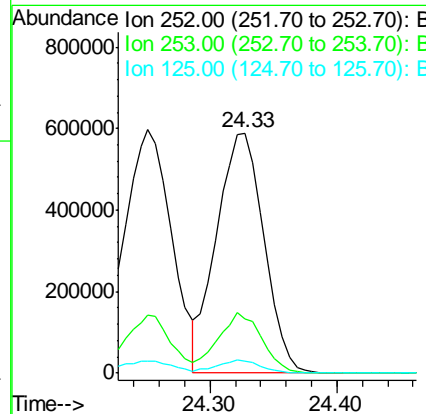
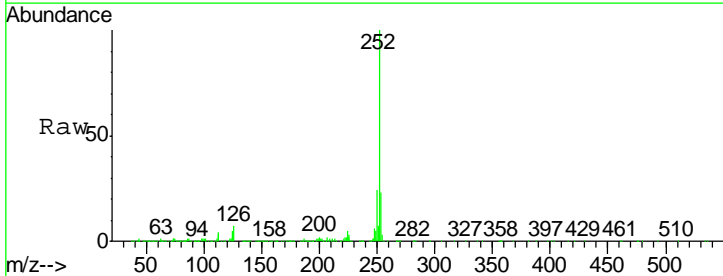
Ion	Ratio	Lower	Upper
252	100		
253	23.9	17.7	26.5
125	4.7	4.0	6.0

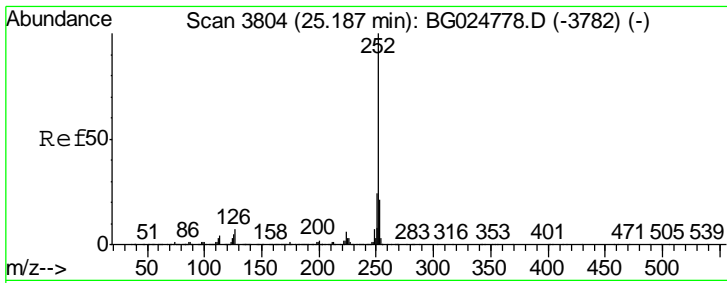


#86
 Benzo(k)fluoranthene
 Concen: 20.63 ng/ul
 RT: 24.33 min Scan# 3657
 Delta R.T. 0.01 min
 Lab File: BG024794.D
 Acq: 15 Nov 2016 13:11

Tgt Ion: 252 Resp: 1523965

Ion	Ratio	Lower	Upper
252	100		
253	22.8	18.5	27.7
125	4.8	4.1	6.1

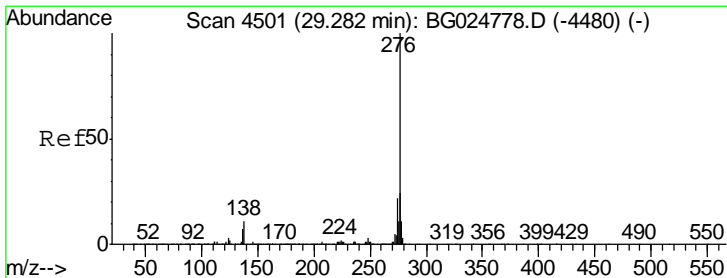
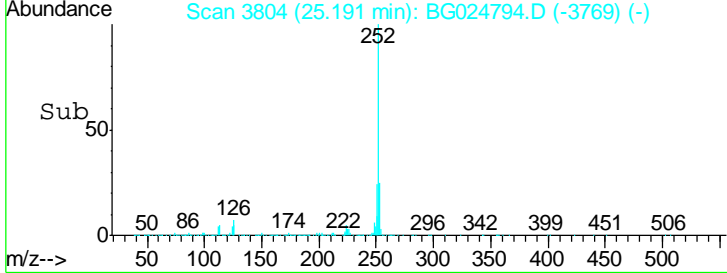
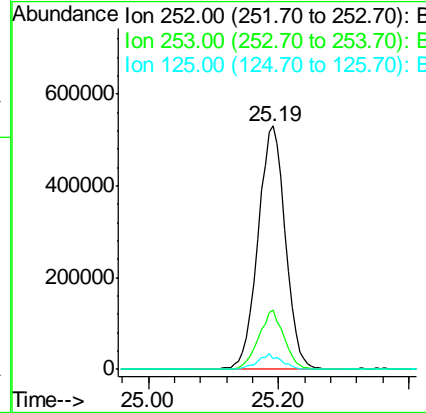
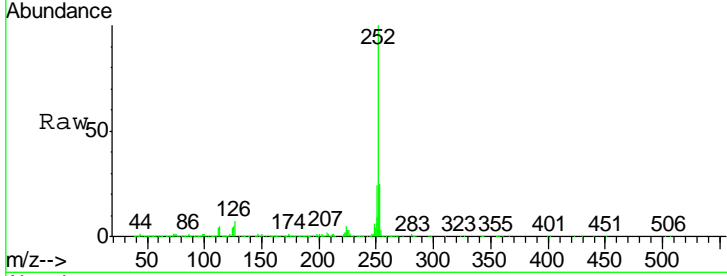




#88
 Benzo(a)pyrene
 Concen: 20.49 ng/ul
 RT: 25.19 min Scan# 3804
 Delta R.T. 0.00 min
 Lab File: BG024794.D
 Acq: 15 Nov 2016 13:11

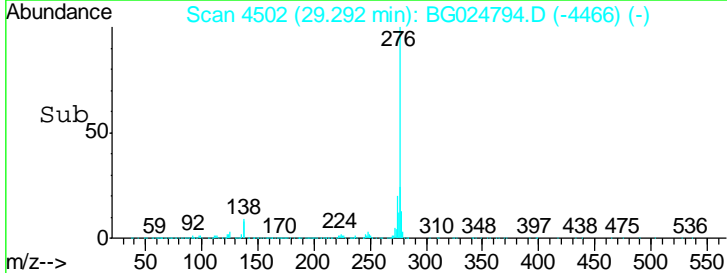
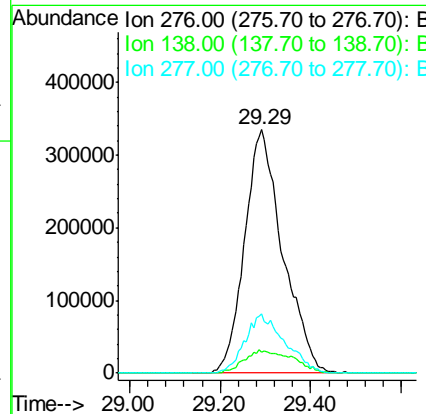
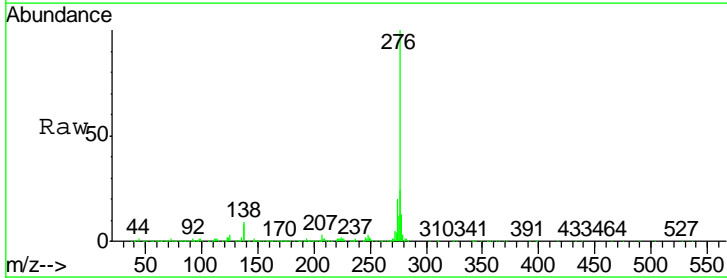
Instrument :
 BNA_G
 ClientSampled :
 SST02011

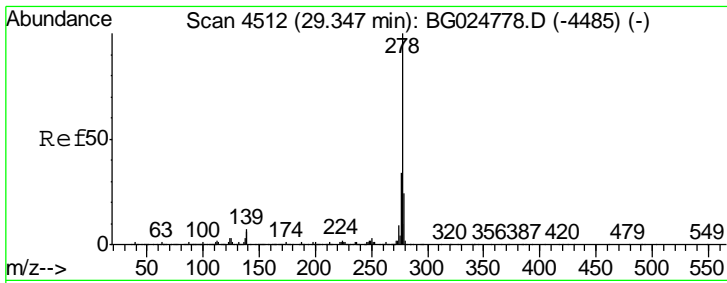
Tgt Ion	Resp	Lower	Upper
252	1542160		
253	24.6	17.8	26.6
125	4.5	5.4	8.0#



#89
 Indeno(1,2,3-cd)pyrene
 Concen: 20.74 ng/ul
 RT: 29.29 min Scan# 4502
 Delta R.T. 0.01 min
 Lab File: BG024794.D
 Acq: 15 Nov 2016 13:11

Tgt Ion	Resp	Lower	Upper
276	1952004		
138	8.6	8.2	12.4
277	24.3	18.6	28.0



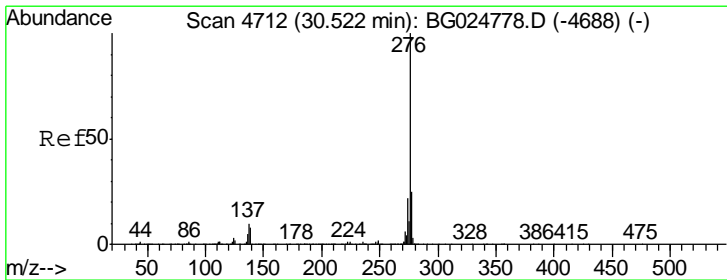
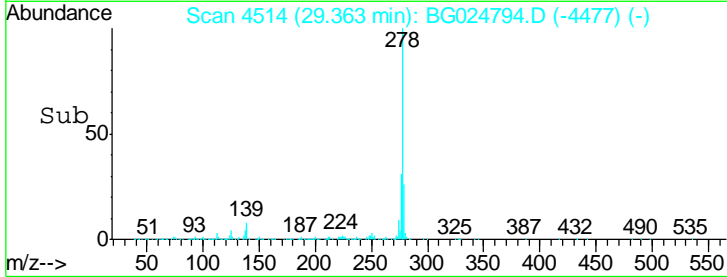
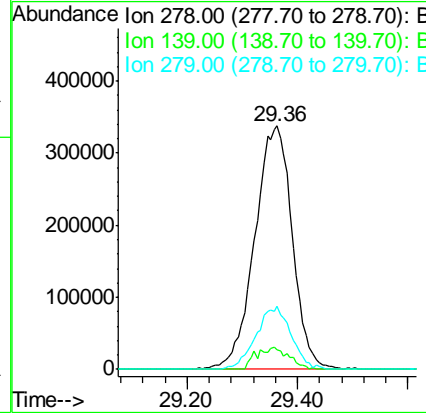
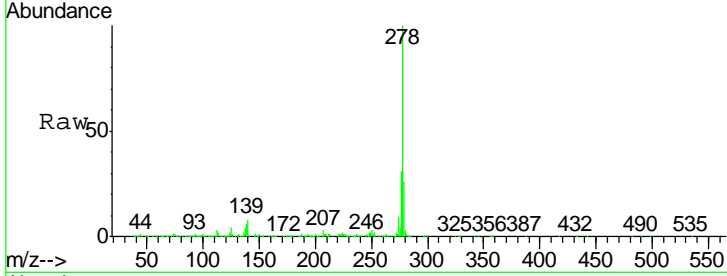


#90
 Dibenzo(a,h)anthracene
 Concen: 20.27 ng/ul
 RT: 29.36 min Scan# 4514
 Delta R.T. 0.02 min
 Lab File: BG024794.D
 Acq: 15 Nov 2016 13:11

Instrument :
 BNA_G
 ClientSampled :
 SSTD02011

Tgt Ion: 278 Resp: 1589184

Ion	Ratio	Lower	Upper
278	100		
139	7.8	6.7	10.1
279	25.7	20.9	31.3



#91
 Benzo(g,h,i)perylene
 Concen: 20.47 ng/ul
 RT: 30.53 min Scan# 4713
 Delta R.T. 0.01 min
 Lab File: BG024794.D
 Acq: 15 Nov 2016 13:11

Tgt Ion: 276 Resp: 1586307

Ion	Ratio	Lower	Upper
276	100		
138	10.8	8.6	12.8
277	22.2	17.6	26.4

