

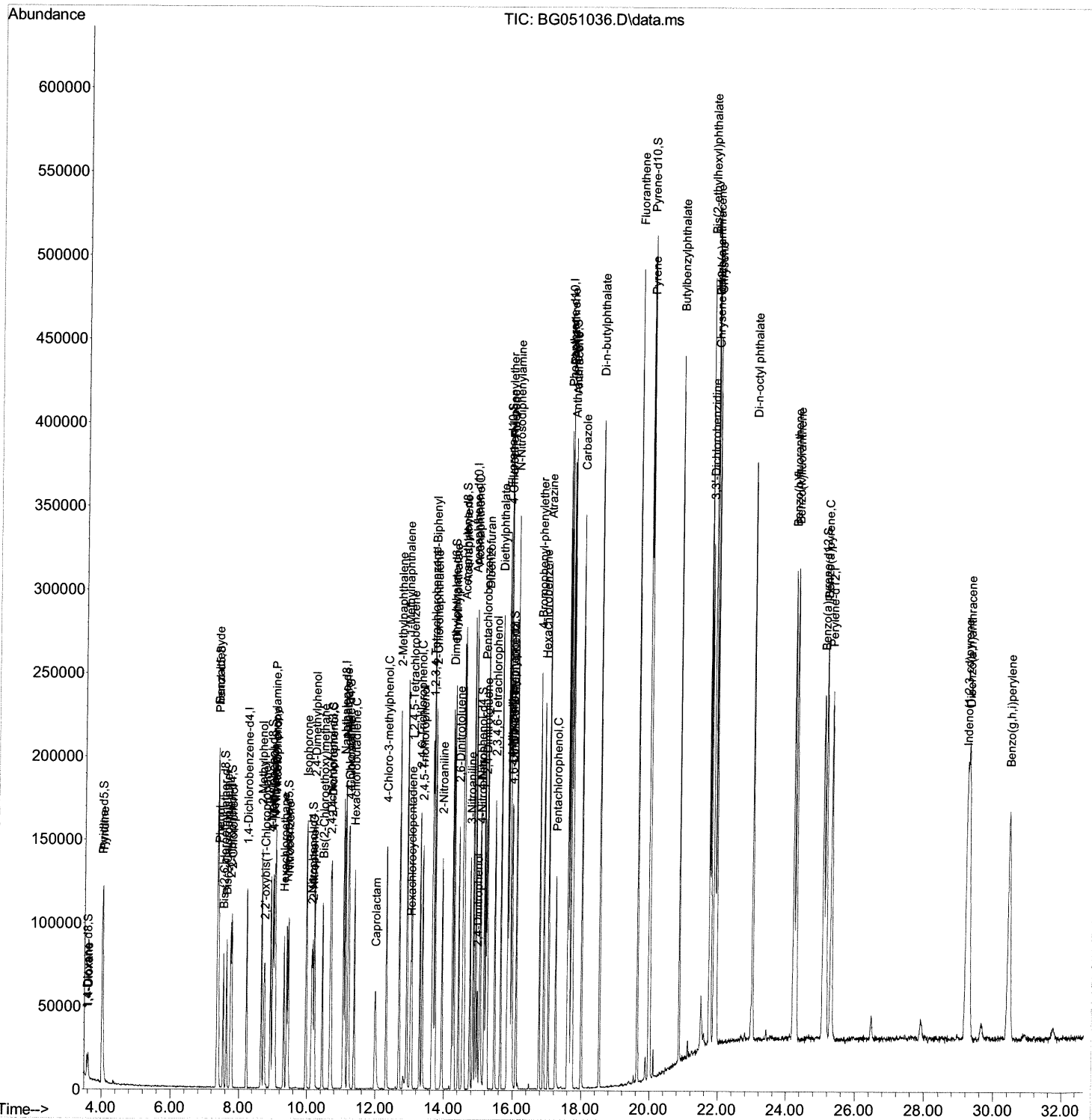
Data Path : Z:\svoasrv\HPCHEM1\BNA_G\Data\BG111521\
 Data File : BG051036.D
 Acq On : 15 Nov 2021 10:25
 Operator : CG/JU
 Sample : SSTDCCC020
 Misc :
 ALS Vial : 2 Sample Multiplier: 1

Instrument :
 BNA_G
 LabSampleId :
 SSTDCCC020

Manual IntegrationsAPPROVED

Quant Time: Nov 15 12:03:24 2021
 Quant Method : Z:\svoasrv\HPCHEM1\BNA_G\Methods\SFAM-EPA-BG110321.M
 Quant Title : SVOA CALIBRATION
 QLast Update : Mon Nov 15 12:03:08 2021
 Response via : Initial Calibration

Reviewed By :Jagrut Upadhyay 11/15/2021
 Supervised By :mohammad ahmed 11/17/2021



Quantitation Report (Qedit)

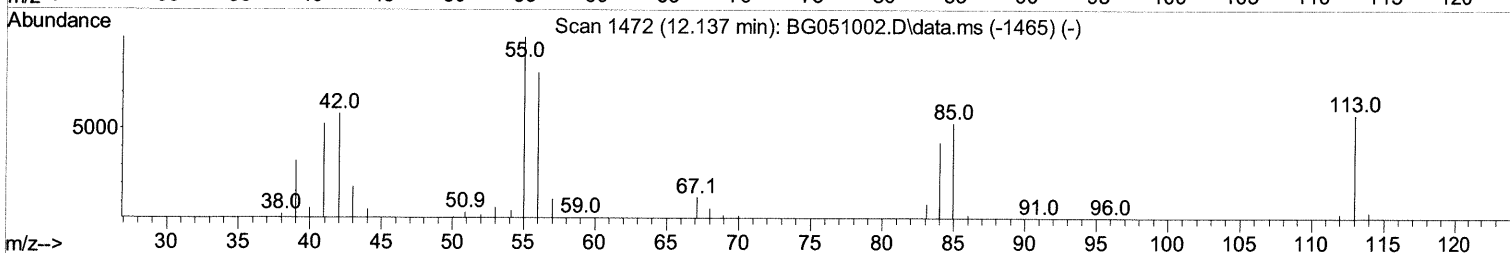
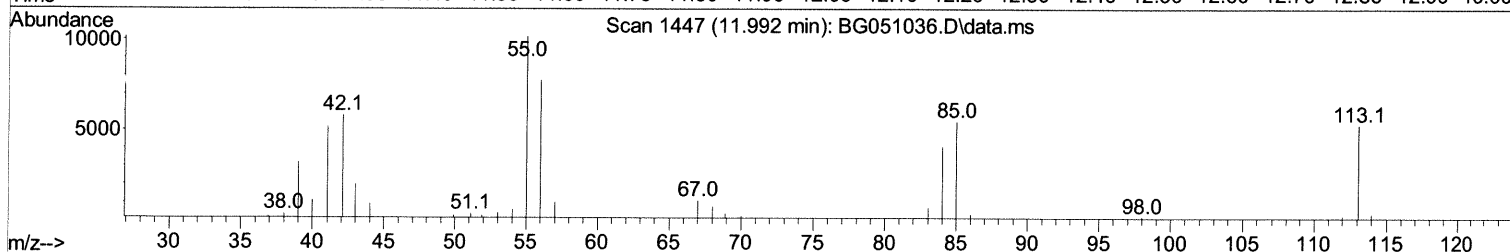
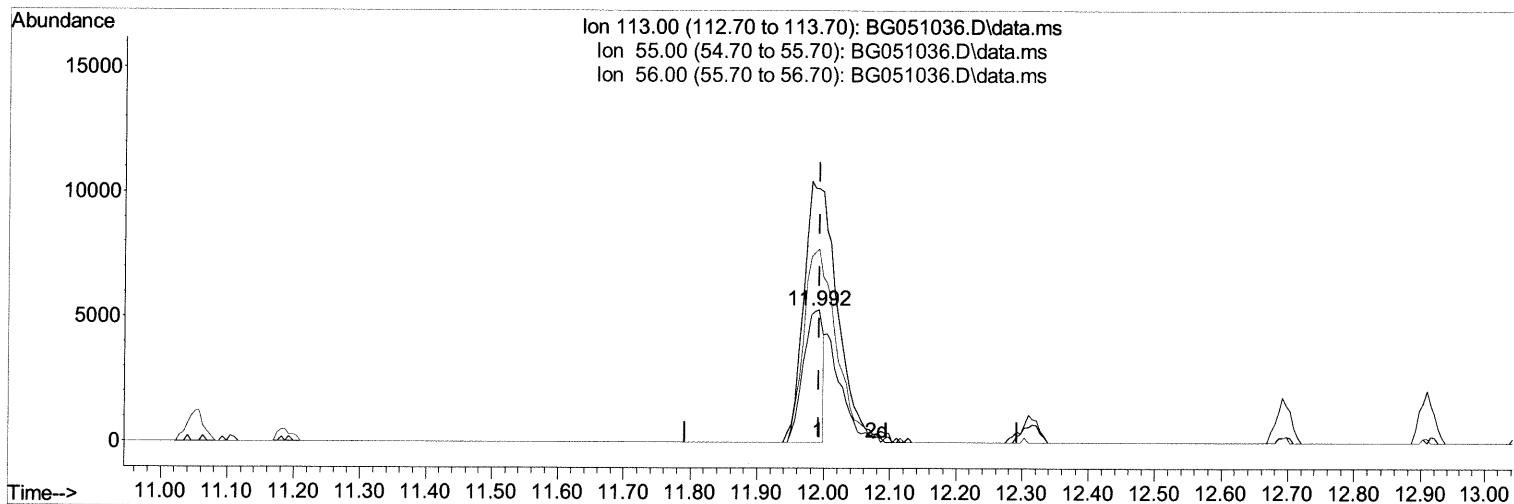
Data Path : Z:\svoasrv\HPCHEM1\BNA_G\Data\BG111521\
 Data File : BG051036.D
 Acq On : 15 Nov 2021 10:25
 Operator : CG/JU
 Sample : SSTDCCC020
 Misc :
 ALS Vial : 2 Sample Multiplier: 1

Instrument :
 BNA_G
 LabSampleId :
 SSTDCCC020

Manual IntegrationsAPPROVED

Quant Time: Nov 15 12:03:24 2021
 Quant Method : Z:\svoasrv\HPCHEM1\BNA_G\Methods\SFAM-EPA-BG110321.M
 Quant Title : SVOA CALIBRATION
 QLast Update : Mon Nov 15 12:03:08 2021
 Response via : Initial Calibration

Reviewed By :Jagrut Upadhyay 11/15/2021
 Supervised By :mohammad ahmed 11/17/2021



TIC: BG051036.D\data.ms

(34) Caprolactam

11.992min (0.000) 10.98 ng/ul

response 10733

Ion	Exp%	Act%
113.00	100.00	100.00
55.00	183.80	191.74
56.00	136.50	146.17
0.00	0.00	0.00

Quantitation Report (Qedit)

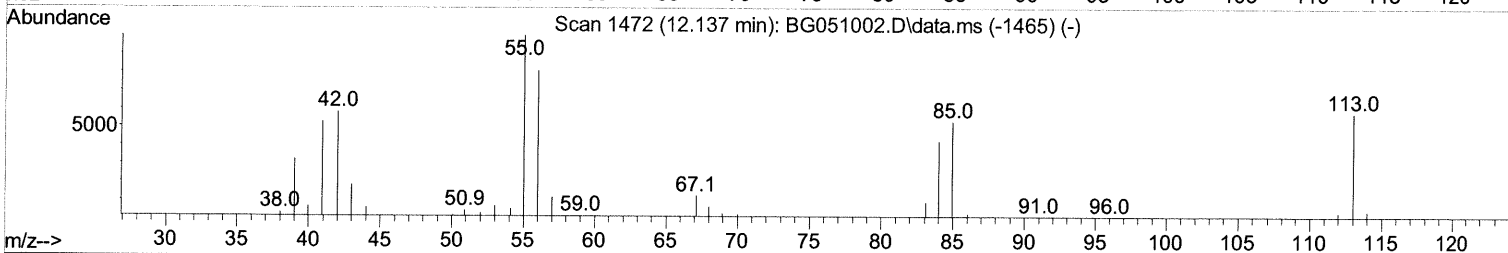
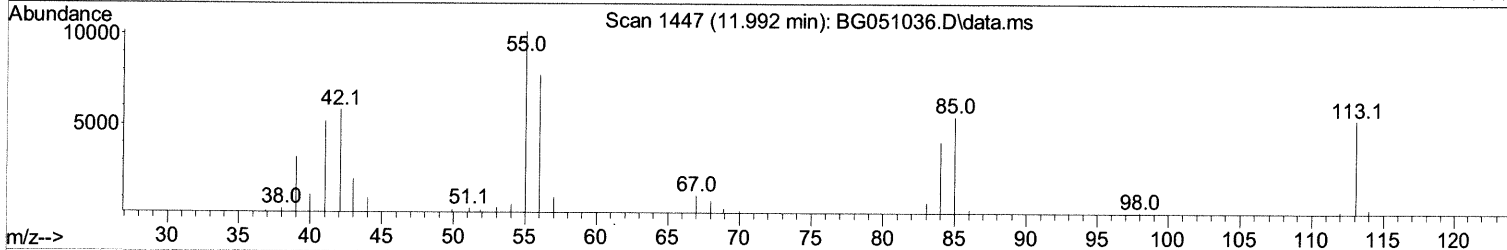
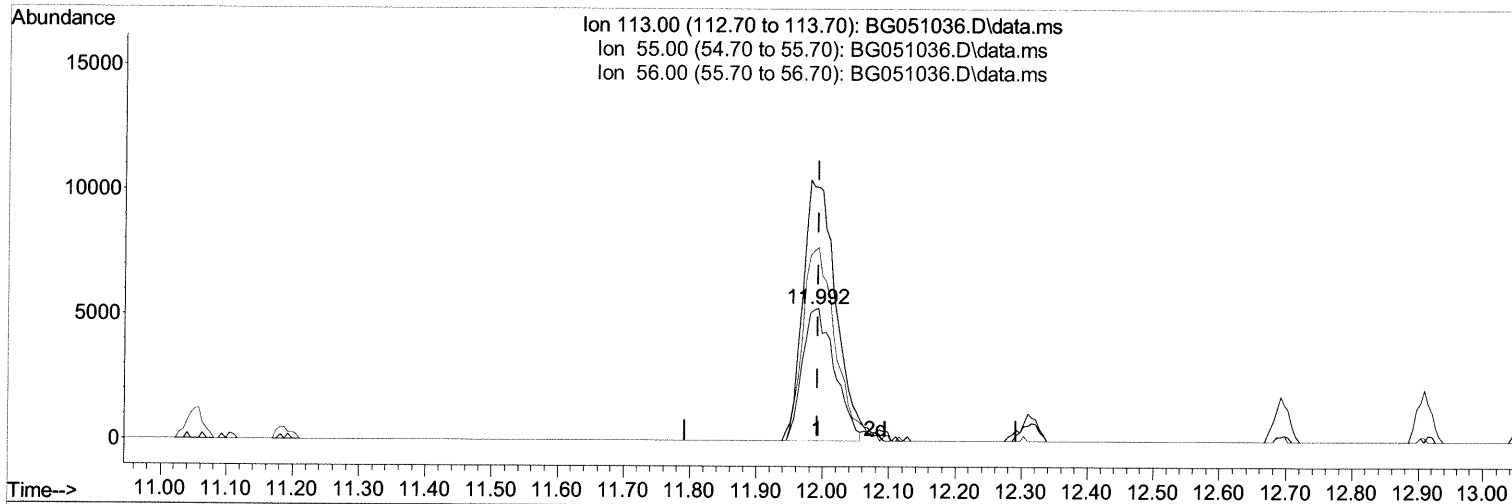
Data Path : Z:\svoasrv\HPCHEM1\BNA_G\Data\BG111521\
 Data File : BG051036.D
 Acq On : 15 Nov 2021 10:25
 Operator : CG/JU
 Sample : SSTDCCC020
 Misc :
 ALS Vial : 2 Sample Multiplier: 1

Instrument :
 BNA_G
 LabSampleId :
 SSTDCCC020

Manual IntegrationsAPPROVED

Quant Time: Nov 15 12:03:24 2021
 Quant Method : Z:\svoasrv\HPCHEM1\BNA_G\Methods\SFAM-EPA-BG110321.M
 Quant Title : SVOA CALIBRATION
 QLast Update : Mon Nov 15 12:03:08 2021
 Response via : Initial Calibration

Reviewed By :Jagrut Upadhyay 11/15/2021
 Supervised By :mohammad ahmed 11/17/2021



TIC: BG051036.D\data.ms

(34) Caprolactam

11.992min (0.000) 18.30 ng/ul m 11/17/21 JU

response 17884

Ion	Exp%	Act%
113.00	100.00	100.00
55.00	183.80	191.74
56.00	136.50	146.17
0.00	0.00	0.00

Data Path : Z:\svoasrv\HPCHEM1\BNA_G\Data\BG111521\
 Data File : BG051036.D
 Acq On : 15 Nov 2021 10:25
 Operator : CG/JU
 Sample : SSTDCCC020
 Misc :
 ALS Vial : 2 Sample Multiplier: 1

Instrument :
 BNA_G
 LabSampleId :
 SSTDCCC020

Manual IntegrationsAPPROVED

Quant Time: Nov 15 12:03:24 2021
 Quant Method : Z:\svoasrv\HPCHEM1\BNA_G\Methods\SFAM-EPA-BG110321.M
 Quant Title : SVOA CALIBRATION
 QLast Update : Mon Nov 15 12:03:08 2021
 Response via : Initial Calibration

Reviewed By :Jagrut Upadhyay 11/15/2021
 Supervised By :mohammad ahmed 11/17/2021

Compound	R.T.	QIon	Response	Conc Units	Dev(Min)
Internal Standards					
1) 1,4-Dichlorobenzene-d4	8.226	152	32701	20.000 ng/ul	0.00
20) Naphthalene-d8	11.052	136	148293	20.000 ng/ul	0.00
38) Acenaphthene-d10	14.853	164	98093	20.000 ng/ul	0.00
64) Phenanthrene-d10	17.597	188	234796	20.000 ng/ul	0.00
79) Chrysene-d12	21.898	240	214086	20.000 ng/ul	0.00
88) Perylene-d12	25.300	264	219556	20.000 ng/ul	0.00

System Monitoring Compounds					
3) 1,4-Dioxane-d8	3.578	96	7505	7.407 ng/uL	0.00
4) Pyridine-d5	4.013	84	55390	18.274 ng/ul	0.00
7) Phenol-d5	7.368	99	62184	17.825 ng/ul	0.00
9) Bis-(2-Chloroethyl)eth...	7.538	67	40625	18.027 ng/ul	0.00
11) 2-Chlorophenol-d4	7.750	132	44442	18.382 ng/ul	0.00
15) 4-Methylphenol-d8	8.925	113	49686	18.091 ng/ul	0.00
21) Nitrobenzene-d5	9.401	128	23114	18.341 ng/ul	0.00
24) 2-Nitrophenol-d4	10.123	143	26644	19.015 ng/ul	0.00
28) 2,4-Dichlorophenol-d3	10.664	165	45322	19.201 ng/ul	0.00
31) 4-Chloroaniline-d4	11.187	131	67519	18.889 ng/ul	0.00
46) Dimethylphthalate-d6	14.242	166	152628	20.338 ng/ul	0.00
49) Acenaphthylene-d8	14.548	160	190106	20.332 ng/ul	0.00
54) 4-Nitrophenol-d4	15.041	143	27386	20.126 ng/ul	0.00
60) Fluorene-d10	15.840	176	133820	20.129 ng/ul	0.00
65) 4,6-Dinitro-2-methylph...	15.958	200	26265	18.451 ng/ul	0.00
73) Anthracene-d10	17.697	188	219210	19.747 ng/ul	0.00
81) Pyrene-d10	19.971	212	260753	18.858 ng/ul	0.00
92) Benzo(a)pyrene-d12	25.065	264	225406	18.571 ng/ul	0.00

Target Compounds					Qvalue
2) 1,4-Dioxane	3.613	88	8665	7.786 ng/uL	98
5) Pyridine	4.031	79	58847	18.756 ng/ul	98
6) Benzaldehyde	7.362	77	47657	21.659 ng/ul	98
8) Phenol	7.397	94	65976	18.282 ng/ul	98
10) Bis(2-Chloroethyl)ether	7.632	93	50509	18.699 ng/ul	99
12) 2-Chlorophenol	7.785	128	44982	18.324 ng/ul	97
13) 2-Methylphenol	8.660	108	47876	17.948 ng/ul	97
14) 2,2'-oxybis(1-Chloropr...	8.743	45	78112	18.359 ng/ul	99
16) Acetophenone	9.054	105	78127	18.312 ng/ul	97
17) N-Nitroso-di-n-propyla...	9.031	70	46291	17.983 ng/ul	96
18) 4-Methylphenol	8.989	108	52315	18.420 ng/ul	94
19) Hexachloroethane	9.313	117	19029	18.541 ng/ul	96
22) Nitrobenzene	9.442	77	65546	18.649 ng/ul	97
23) Isophorone	9.965	82	124391	18.236 ng/ul	98
25) 2-Nitrophenol	10.159	139	27257	19.389 ng/ul	98
26) 2,4-Dimethylphenol	10.200	107	59969	19.383 ng/ul	99
27) Bis(2-Chloroethoxy)met...	10.441	93	69222	18.834 ng/ul	98
29) 2,4-Dichlorophenol	10.693	162	44702	19.416 ng/ul	93
30) Naphthalene	11.105	128	158805	19.584 ng/ul	98
32) 4-Chloroaniline	11.210	127	68168	19.206 ng/ul	100
33) Hexachlorobutadiene	11.369	225	29522	19.536 ng/ul	95
34) Caprolactam	11.992	113	17884m	18.296 ng/ul	> 111/7/21 JU
35) 4-Chloro-3-methylphenol	12.309	107	55355	18.821 ng/ul	99

Data Path : Z:\svoasrv\HPCHEM1\BNA_G\Data\BG111521\
 Data File : BG051036.D
 Acq On : 15 Nov 2021 10:25
 Operator : CG/JU
 Sample : SSTDCCC020
 Misc :
 ALS Vial : 2 Sample Multiplier: 1

Instrument :
 BNA_G
 LabSampleId :
 SSTDCCC020

Manual IntegrationsAPPROVED

Reviewed By :Jagrut Upadhyay 11/15/2021
 Supervised By :mohammad ahmed 11/17/2021

Quant Time: Nov 15 12:03:24 2021
 Quant Method : Z:\svoasrv\HPCHEM1\BNA_G\Methods\SFAM-EPA-BG110321.M
 Quant Title : SVOA CALIBRATION
 QLast Update : Mon Nov 15 12:03:08 2021
 Response via : Initial Calibration

Compound	R.T.	QIon	Response	Conc	Units	Dev(Min)
36) 2-Methylnaphthalene	12.691	142	104968	19.001	ng/ul	99
37) 1-Methylnaphthalene	12.908	142	108088	19.310	ng/ul	99
39) 1,2,4,5-Tetrachloroben...	13.055	216	58605	20.504	ng/ul	99
40) Hexachlorocyclopentadiene	13.026	237	19413	14.144	ng/ul	97
41) 2,4,6-Trichlorophenol	13.290	196	39687	21.220	ng/ul	94
42) 2,4,5-Trichlorophenol	13.367	196	41302	20.570	ng/ul	99
43) 1,1'-Biphenyl	13.684	154	146556	20.440	ng/ul	96
44) 2-Chloronaphthalene	13.737	162	114622	20.400	ng/ul	100
45) 2-Nitroaniline	13.937	65	43453	19.465	ng/ul	97
47) Dimethylphthalate	14.289	163	153809	20.497	ng/ul	99
48) 2,6-Dinitrotoluene	14.424	165	31670	20.165	ng/ul	92
50) Acenaphthylene	14.577	152	192077	20.497	ng/ul	98
51) 3-Nitroaniline	14.759	138	34088	20.985	ng/ul	99
52) Acenaphthene	14.912	153	123515	20.045	ng/ul	98
53) 2,4-Dinitrophenol	14.971	184	13932	16.080	ng/ul	94
55) 4-Nitrophenol	15.059	109	24760	19.841	ng/ul	92
56) Dibenzofuran	15.247	168	178074	20.190	ng/ul	98
57) 2,4-Dinitrotoluene	15.212	165	46858	20.906	ng/ul	88
58) 2,3,4,6-Tetrachlorophenol	15.470	232	34666	21.969	ng/ul#	96
59) Diethylphthalate	15.646	149	164010	20.419	ng/ul	99
61) Fluorene	15.899	166	144936	20.762	ng/ul	99
62) 4-Chlorophenyl-phenyle...	15.876	204	75444	20.754	ng/ul	97
63) 4-Nitroaniline	15.917	138	36430	22.607	ng/ul	98
66) 4,6-Dinitro-2-methylph...	15.970	198	25031	18.031	ng/ul	94
67) N-Nitrosodiphenylamine	16.093	169	128023	19.506	ng/ul	97
68) 4-Bromophenyl-phenylether	16.774	248	46365	19.852	ng/ul	95
69) Hexachlorobenzene	16.898	284	47749	19.886	ng/ul	98
70) Atrazine	17.033	200	54464	19.569	ng/ul	98
71) Pentachlorophenol	17.245	266	24404	22.138	ng/ul	97
72) Phenanthrene	17.638	178	251033	20.029	ng/ul	99
74) Anthracene	17.732	178	254586	20.245	ng/ul	98
75) 1,2,3,4-Tetrachloroben...	13.655	216	62283	19.482	ng/ul	96
76) Pentachlorobenzene	15.165	250	58246	19.663	ng/ul	98
77) Carbazole	18.002	167	232672	20.643	ng/ul	99
78) Di-n-butylphthalate	18.531	149	291243	19.664	ng/ul	99
80) Fluoranthene	19.642	202	313796	18.909	ng/ul	98
82) Pyrene	20.000	202	307924	18.991	ng/ul	99
83) Butylbenzylphthalate	20.864	149	124230	17.817	ng/ul	99
84) 3,3'-Dichlorobenzidine	21.780	252	102929	19.742	ng/ul	100
85) Benzo(a)anthracene	21.874	228	279987	18.891	ng/ul	98
86) Bis(2-ethylhexyl)phtha...	21.739	149	181874	18.172	ng/ul	99
87) Chrysene	21.945	228	271345	19.165	ng/ul	99
89) Di-n-octyl phthalate	23.008	149	309189	17.298	ng/ul	100
90) Benzo(b)fluoranthene	24.207	252	284056	18.161	ng/ul	99
91) Benzo(k)fluoranthene	24.277	252	270869	18.455	ng/ul	98
93) Benzo(a)pyrene	25.141	252	272552	18.296	ng/ul	98
94) Indeno(1,2,3-cd)pyrene	29.207	276	326283	19.676	ng/ul	96
95) Dibenzo(a,h)anthracene	29.277	278	276215	19.686	ng/ul	98
96) Benzo(g,h,i)perylene	30.441	276	277921	20.021	ng/ul	97

(#) = qualifier out of range (m) = manual integration (+) = signals summed