

Data Path : U:\HPCHEM1\BNA G\DATA\BG111615\
 Data File : BG019648.D
 Acq On : 16 Nov 2015 23:46
 Operator : UM/NP
 Sample : G4323-04
 Misc :
 ALS Vial : 10 Sample Multiplier: 1

Instrument :
 BNA_G
 ClientSampleId :

Quant Time: Nov 17 01:20:26 2015
 Quant Method : Z:\HPCHEM1\BNA G\METHODS\SOM02.2-EPA-BG111615.M
 Quant Title : SVOA CALIBRATION
 QLast Update : Tue Nov 17 01:14:52 2015
 Response via : Initial Calibration

Internal Standards	R.T.	QIon	Response	Conc	Units	Dev(Min)
1) 1,4-Dichlorobenzene-d4	8.15	152	25102	20.00	ng/ul	0.00
18) Naphthalene-d8	10.98	136	109114	20.00	ng/ul	0.00
36) Acenaphthene-d10	14.78	164	93687	20.00	ng/ul	0.00
62) Phenanthrene-d10	17.52	188	284099	20.00	ng/ul	0.00
78) Chrysene-d12	21.79	240	403022	20.00	ng/ul	0.00
86) Perylene-d12	25.11	264	385314	20.00	ng/ul	0.00

System Monitoring Compounds

3) 1,4-Dioxane-d8	3.44	96	3064	5.21	ng/uL	0.00
5) Phenol-d5	7.29	99	68846	26.78	ng/ul	0.00
7) Bis-(2-Chloroethyl)ether-d	7.46	67	50383	29.90	ng/ul	0.00
9) 2-Chlorophenol-d4	7.67	132	43886	26.61	ng/ul	0.00
13) 4-Methylphenol-d8	8.85	113	50490	23.71	ng/ul	0.00
19) Nitrobenzene-d5	9.32	128	26232	29.28	ng/ul	0.00
22) 2-Nitrophenol-d4	10.05	143	29166	28.93	ng/ul	0.00
26) 2,4-Dichlorophenol-d3	10.59	165	56809	26.06	ng/ul	0.00
29) 4-Chloroaniline-d4	11.11	131	61007	29.48	ng/ul	0.00
44) Dimethylphthalate-d6	14.18	166	244938	28.91	ng/ul	0.00
47) Acenaphthylene-d8	14.48	160	252002	27.44	ng/ul	0.00
52) 4-Nitrophenol-d4	14.97	143	39056	29.26	ng/ul	0.00
58) Fluorene-d10	15.77	176	214711	28.32	ng/ul	0.00
63) 4,6-Dinitro-2-methylphenol	15.88	200	47271	25.76	ng/ul	0.00
71) Anthracene-d10	17.62	188	385068	27.92	ng/ul	0.00
79) Pyrene-d10	19.89	212	481416	26.22	ng/ul	0.00
90) Benzo(a)pyrene-d12	24.88	264	518704	25.79	ng/ul	0.00

Target Compounds

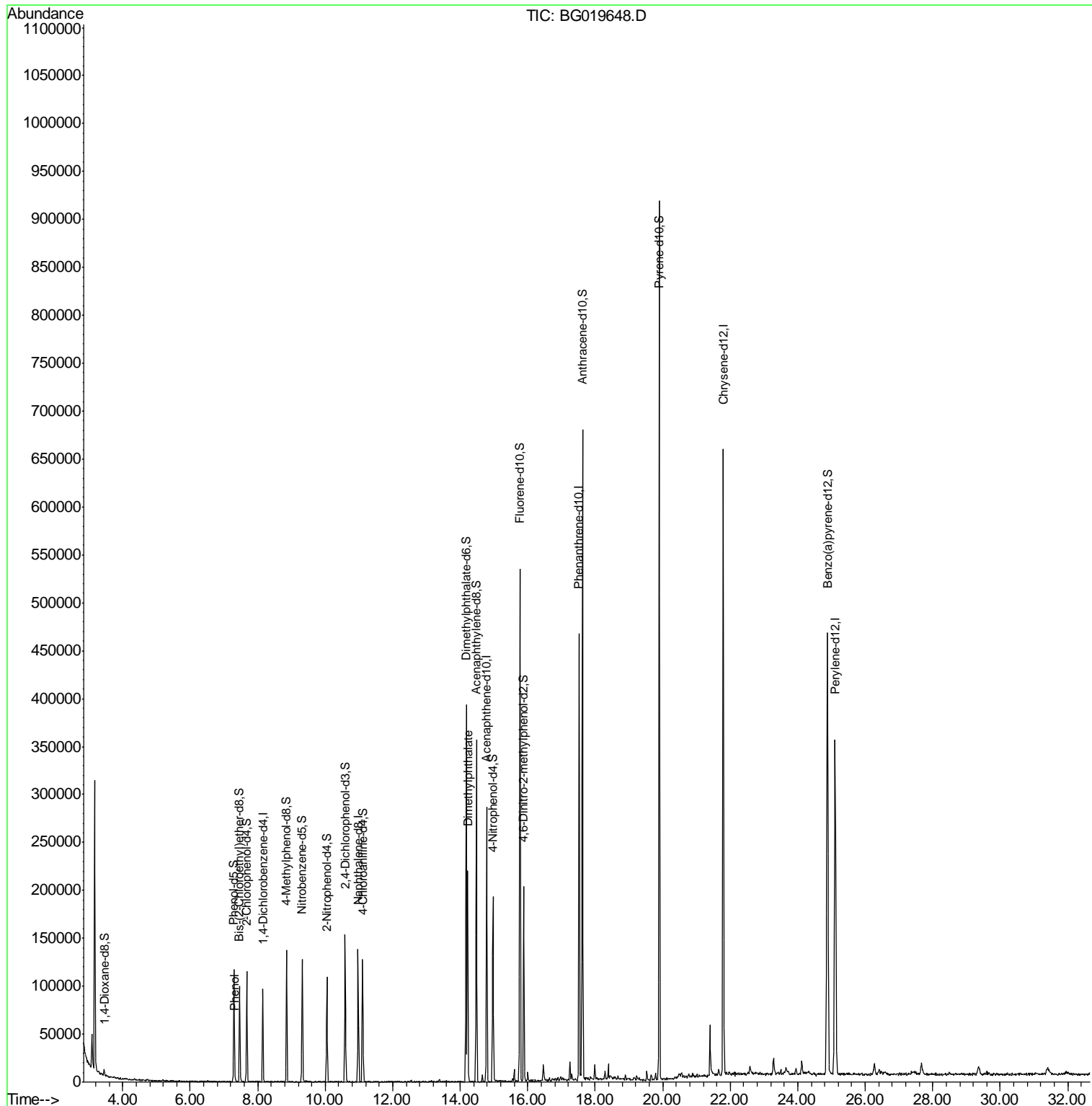
					Ovalue
6) Phenol	7.32	94	3882	1.40	ng/ul 95
45) Dimethylphthalate	14.22	163	134779	16.04	ng/ul 99

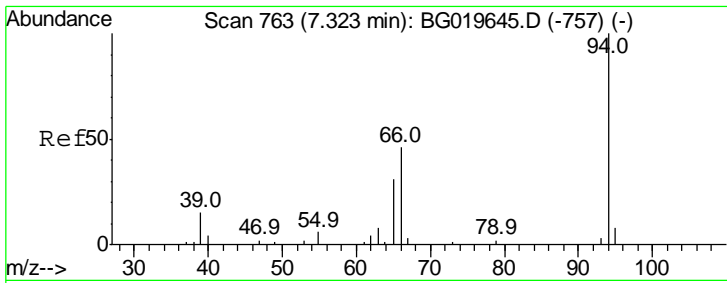
(#) = qualifier out of range (m) = manual integration (+) = signals summed

Data Path : U:\HPCHEM1\BNA G\DATA\BG111615\
 Data File : BG019648.D
 Acq On : 16 Nov 2015 23:46
 Operator : UM/NP
 Sample : G4323-04
 Misc :
 ALS Vial : 10 Sample Multiplier: 1

Instrument :
 BNA_G
 ClientSampled :

Quant Time: Nov 17 01:20:26 2015
 Quant Method : Z:\HPCHEM1\BNA G\METHODS\SOM02.2-EPA-BG111615.M
 Quant Title : SVOA CALIBRATION
 QLast Update : Tue Nov 17 01:14:52 2015
 Response via : Initial Calibration

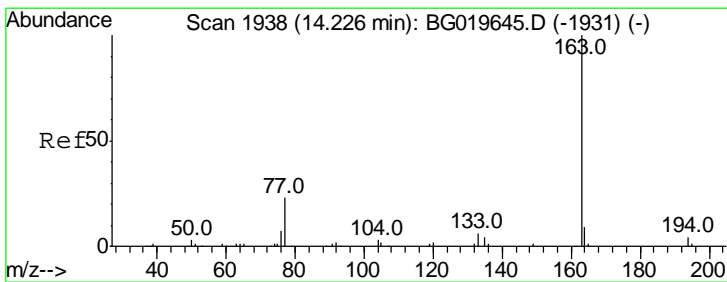
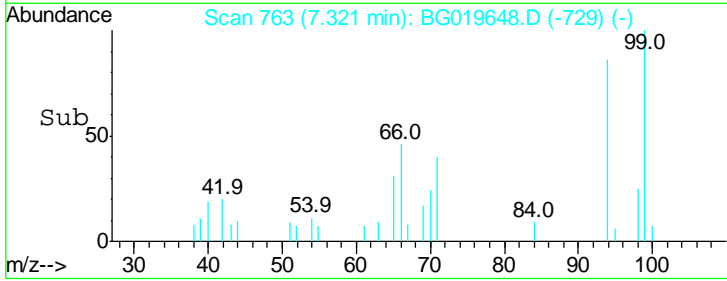
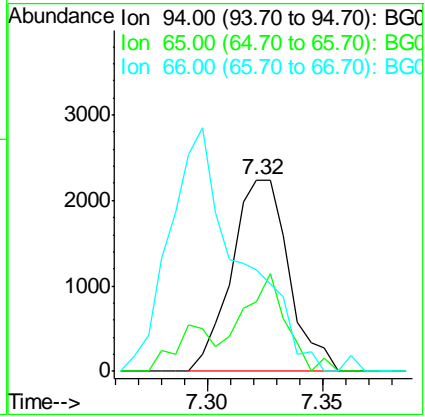
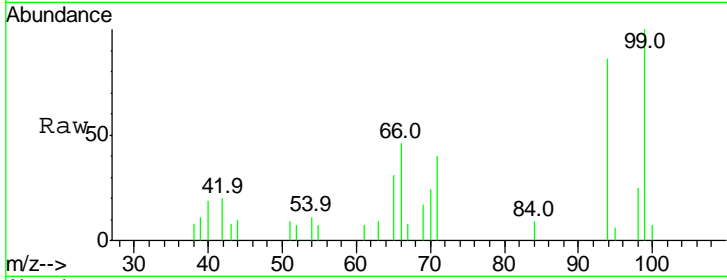




#6
 Phenol
 Concen: 1.40 ng/ul
 RT: 7.32 min Scan# 763
 Delta R.T. -0.00 min
 Lab File: BG019648.D
 Acq: 16 Nov 2015 23:46

Instrument :
 BNA_G
 ClientSampled :

Tgt Ion	Resp	Lower	Upper
94	100		
65	36.1	27.4	41.0
66	52.8	39.0	58.6



#45
 Dimethylphthalate
 Concen: 16.04 ng/ul
 RT: 14.22 min Scan# 1938
 Delta R.T. -0.00 min
 Lab File: BG019648.D
 Acq: 16 Nov 2015 23:46

Tgt Ion	Resp	Lower	Upper
163	100		
194	4.2	3.5	5.3
164	10.1	8.3	12.5

