

Data Path : Z:\HPCHEM1\BNA_G\Data\BG111617\
 Data File : BG031074.D
 Acq On : 17 Nov 2017 9:45
 Operator : SJ/JU
 Sample : I6385-09
 Misc :
 ALS Vial : 32 Sample Multiplier: 1

Instrument :
 BNA_G
 ClientSampleId :
 B0FJ6

Quant Time: Nov 17 11:05:29 2017
 Quant Method : Z:\HPCHEM1\BNA_G\METHODS\SOM-EPA-BG111617-PAH.M
 Quant Title : SVOA CALIBRATION
 QLast Update : Fri Nov 17 04:52:45 2017
 Response via : Initial Calibration

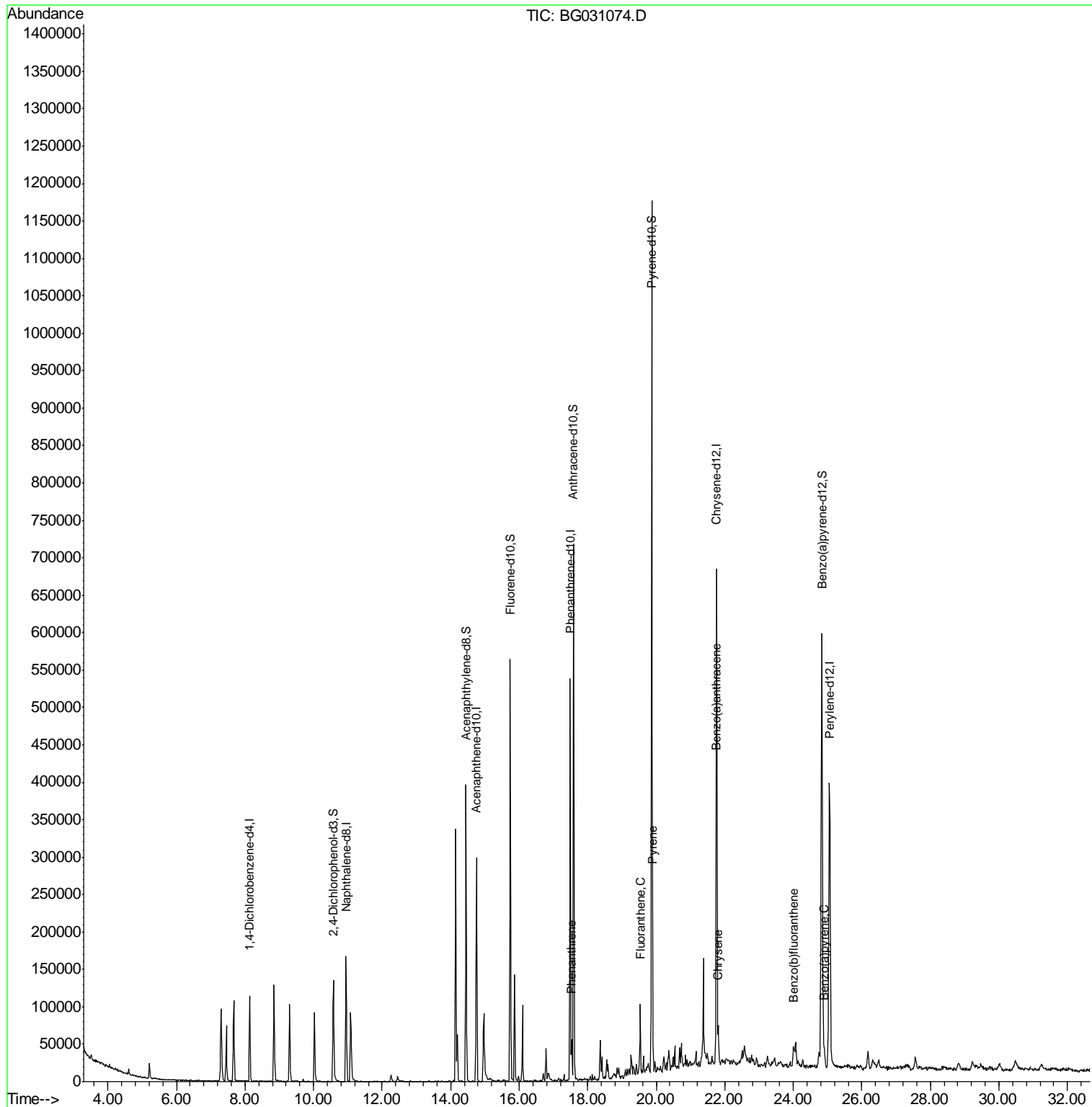
Internal Standards	R.T.	QIon	Response	Conc	Units	Dev(Min)
1) 1,4-Dichlorobenzene-d4	8.14	152	35467	20.00	ng/ul	0.00
2) Naphthalene-d8	10.95	136	153519	20.00	ng/ul	0.00
6) Acenaphthene-d10	14.75	164	114340	20.00	ng/ul	0.00
12) Phenanthrene-d10	17.49	188	350154	20.00	ng/ul	0.00
18) Chrysene-d12	21.76	240	451781	20.00	ng/ul	0.00
23) Perylene-d12	25.06	264	453137	20.00	ng/ul	0.00
System Monitoring Compounds						
3) 2,4-Dichlorophenol-d3	10.57	165	69162	23.88	ng/uL	0.00
7) Acenaphthylene-d8	14.45	160	329439	27.70	ng/ul	0.00
10) Fluorene-d10	15.74	176	266930	27.95	ng/ul	0.00
15) Anthracene-d10	17.59	188	455613	26.00	ng/ul	0.00
19) Pyrene-d10	19.87	212	651801	31.58	ng/ul	0.00
26) Benzo(a)pyrene-d12	24.83	264	641260	28.60	ng/ul	0.00
Target Compounds						
14) Phenanthrene	17.53	178	38354	2.041	ng/ul	95
17) Fluoranthene	19.53	202	61183	2.340	ng/ul#	84
20) Pyrene	19.89	202	76308	3.182	ng/ul#	83
21) Benzo(a)anthracene	21.74	228	31343	1.139	ng/ul	96
22) Chrysene	21.81	228	38410	1.467	ng/ul	100
24) Benzo(b)fluoranthene	24.01	252	37854	1.383	ng/ul#	92
27) Benzo(a)pyrene	24.90	252	29743	1.133	ng/ul#	90

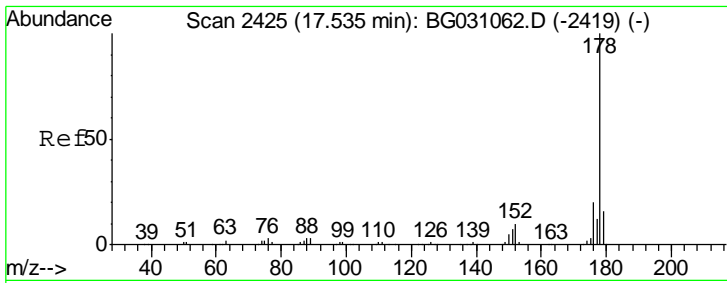
(#) = qualifier out of range (m) = manual integration (+) = signals summed

Data Path : Z:\HPCHEM1\BNA_G\Data\BG111617\
 Data File : BG031074.D
 Acq On : 17 Nov 2017 9:45
 Operator : SJ/JU
 Sample : I6385-09
 Misc :
 ALS Vial : 32 Sample Multiplier: 1

Instrument :
 BNA_G
 ClientSampleId :
 B0FJ6

Quant Time: Nov 17 11:05:29 2017
 Quant Method : Z:\HPCHEM1\BNA_G\METHODS\SOM-EPA-BG111617-PAH.M
 Quant Title : SVOA CALIBRATION
 QLast Update : Fri Nov 17 04:52:45 2017
 Response via : Initial Calibration

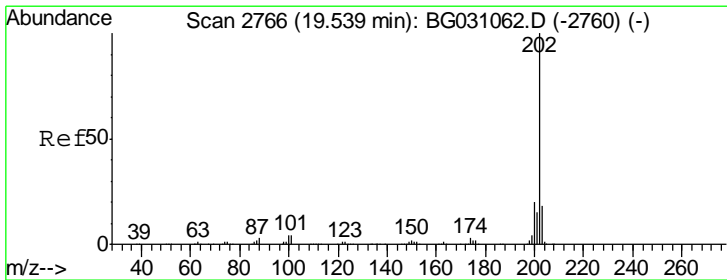
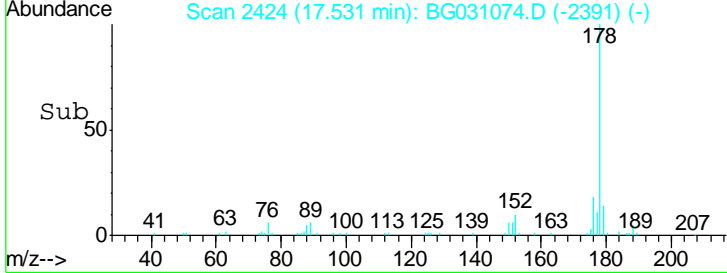
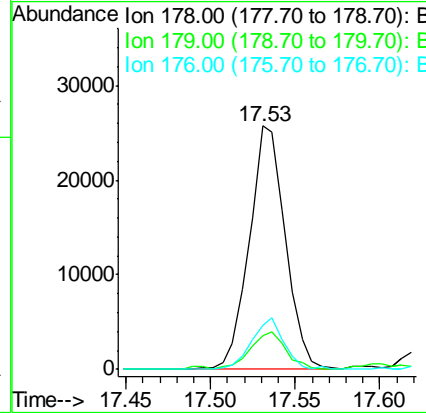
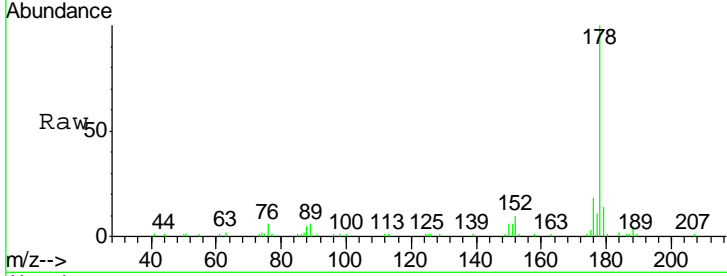




#14
 Phenanthrene
 Concen: 2.041 ng/ul
 RT: 17.53 min Scan# 2424
 Delta R.T. -0.00 min
 Lab File: BG031074.D
 Acq: 17 Nov 2017 9:45

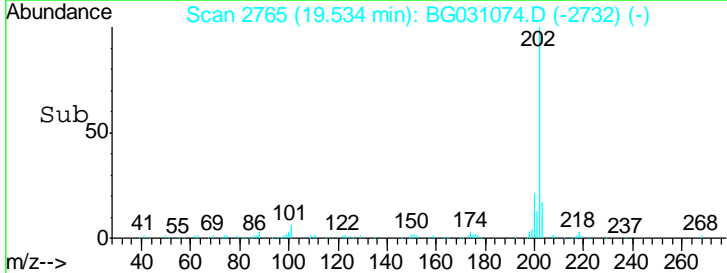
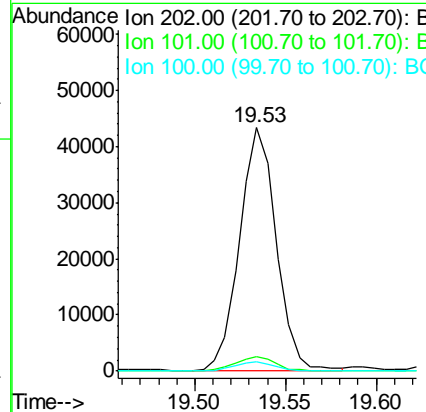
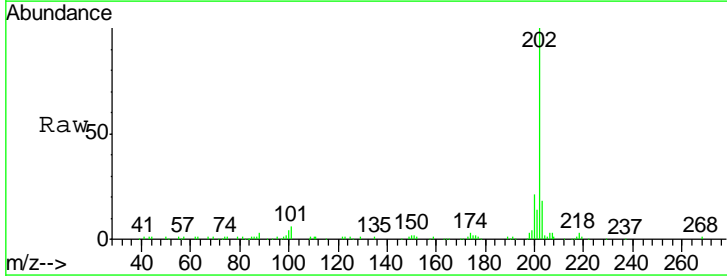
Instrument :
 BNA_G
 ClientSampled :
 B0FJ6

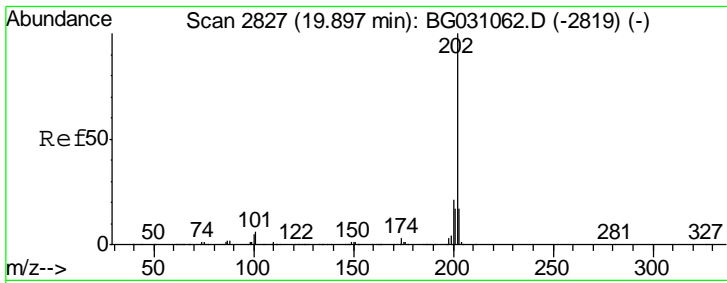
Tgt Ion	Resp	Lower	Upper
178	100		
179	13.7	12.2	18.4
176	18.1	16.4	24.6



#17
 Fluoranthene
 Concen: 2.340 ng/ul
 RT: 19.53 min Scan# 2765
 Delta R.T. -0.00 min
 Lab File: BG031074.D
 Acq: 17 Nov 2017 9:45

Tgt Ion	Resp	Lower	Upper
202	100		
101	6.0	9.8	14.8#
100	4.0	7.5	11.3#

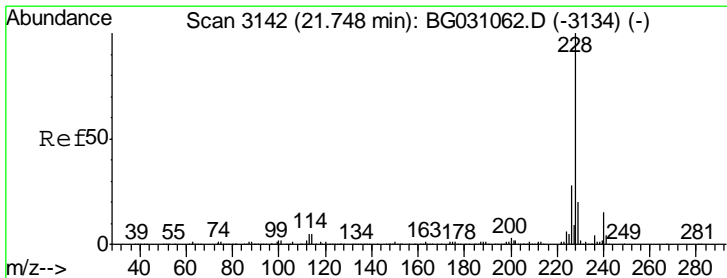
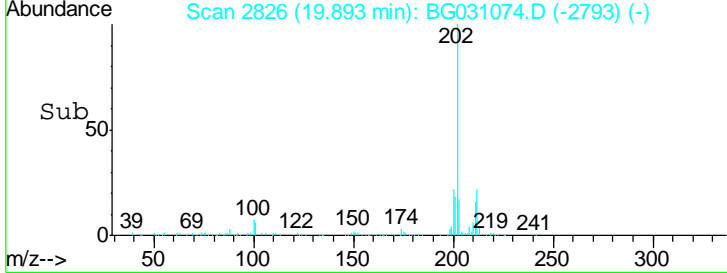
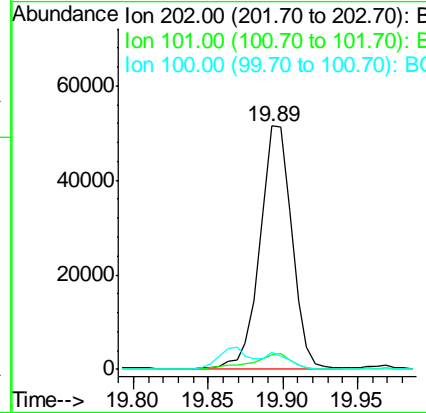
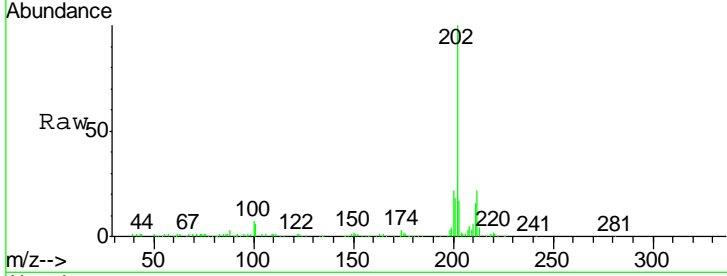




#20
 Pyrene
 Concen: 3.182 ng/ul
 RT: 19.89 min Scan# 2826
 Delta R.T. -0.00 min
 Lab File: BG031074.D
 Acq: 17 Nov 2017 9:45

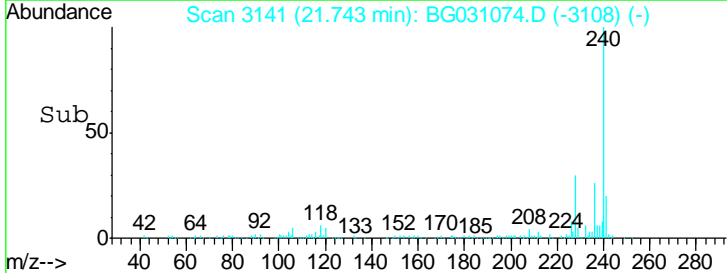
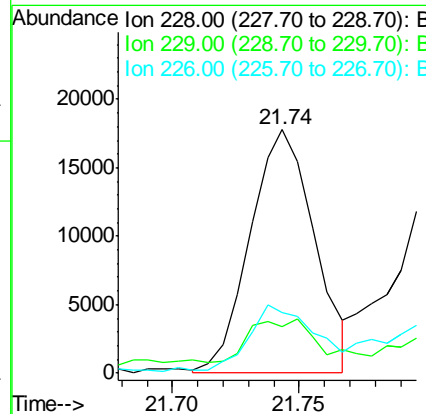
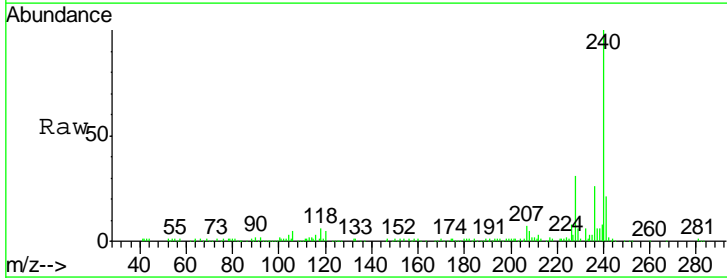
Instrument :
 BNA_G
 ClientSampled :
 B0FJ6

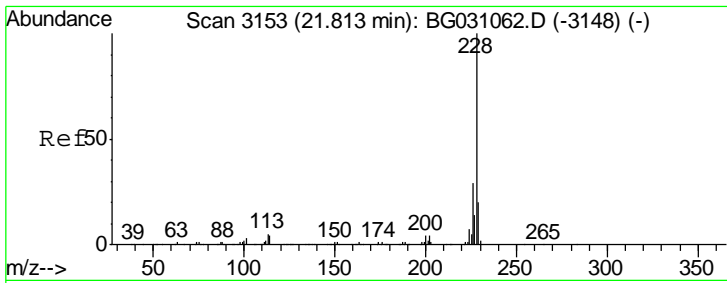
Tgt Ion	Ratio	Lower	Upper
202	100		
101	6.1	11.2	16.8#
100	6.7	9.8	14.6#



#21
 Benzo(a)anthracene
 Concen: 1.139 ng/ul
 RT: 21.74 min Scan# 3141
 Delta R.T. -0.00 min
 Lab File: BG031074.D
 Acq: 17 Nov 2017 9:45

Tgt Ion	Ratio	Lower	Upper
228	100		
229	19.0	15.9	23.9
226	24.7	22.1	33.1

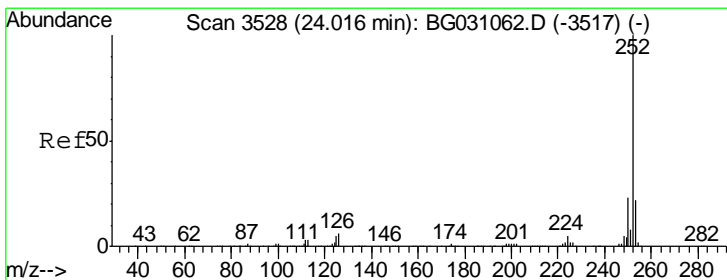
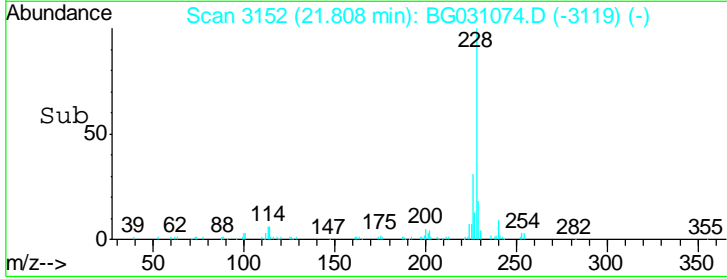
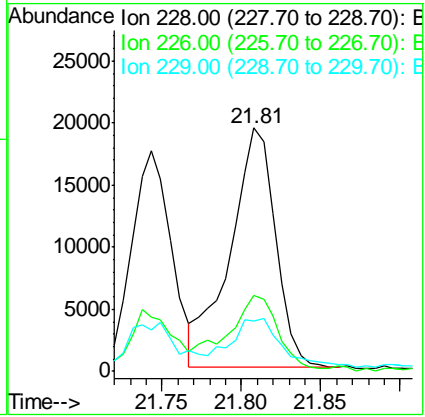
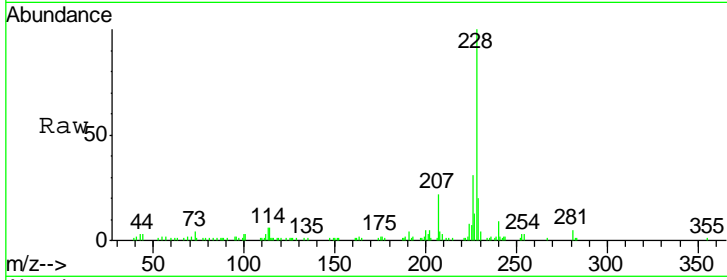




#22
 Chrysene
 Concen: 1.467 ng/ul
 RT: 21.81 min Scan# 3152
 Delta R.T. -0.00 min
 Lab File: BG031074.D
 Acq: 17 Nov 2017 9:45

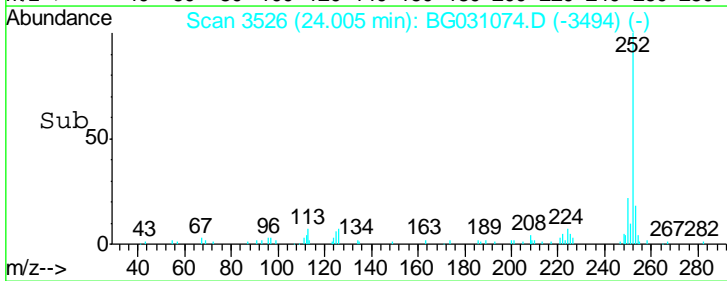
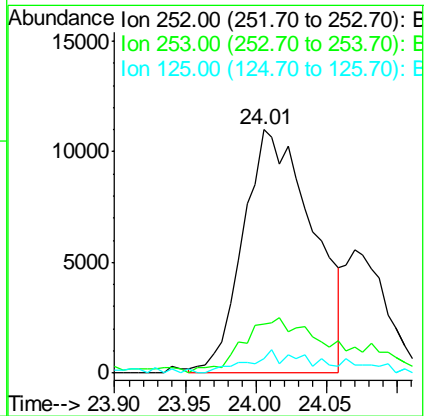
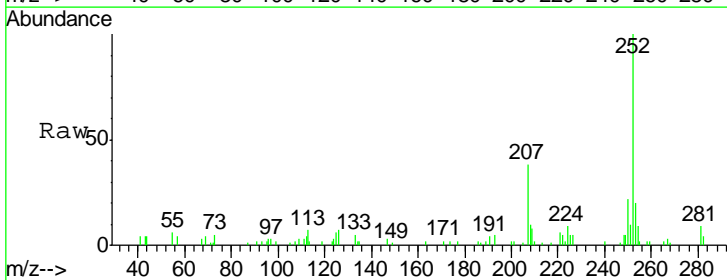
Instrument :
 BNA_G
 ClientSampled :
 B0FJ6

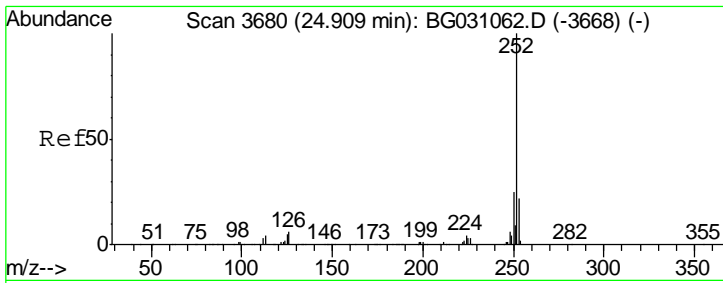
Tgt Ion	Resp	Lower	Upper
228	38410		
226	31.2	25.0	37.6
229	20.5	16.6	25.0



#24
 Benzo(b)fluoranthene
 Concen: 1.383 ng/ul
 RT: 24.01 min Scan# 3526
 Delta R.T. -0.01 min
 Lab File: BG031074.D
 Acq: 17 Nov 2017 9:45

Tgt Ion	Resp	Lower	Upper
252	37854		
253	20.0	17.8	26.6
125	5.9	9.4	14.0





#27
 Benzo(a)pyrene
 Concen: 1.133 ng/ul
 RT: 24.90 min Scan# 3678
 Delta R.T. -0.01 min
 Lab File: BG031074.D
 Acq: 17 Nov 2017 9:45

Instrument :
 BNA_G
 ClientSampleId :
 B0FJ6

Tgt Ion: 252 Resp: 29743

Ion	Ratio	Lower	Upper
252	100		
253	25.4	17.1	25.7
125	6.4	9.4	14.2#

