

Data Path : Z:\svoasrv\HPCHEM1\BNA_G\Data\BG111621\
 Data File : BG051057.D
 Acq On : 16 Nov 2021 1:33
 Operator : CG/JU
 Sample : M4657-01
 Misc :
 ALS Vial : 17 Sample Multiplier: 1

Instrument :
 BNA_G
 ClientSampleId :
 VWE-B31-111121-0-10

Quant Time: Nov 16 02:24:26 2021
 Quant Method : Z:\svoasrv\HPCHEM1\BNA_G\Methods\8270-BG111321.M
 Quant Title : ASP BNA STANDARDS FOR 5 POINT CALIBRATION
 QLast Update : Mon Nov 15 03:55:35 2021
 Response via : Initial Calibration

Compound	R.T.	QIon	Response	Conc	Units	Dev(Min)

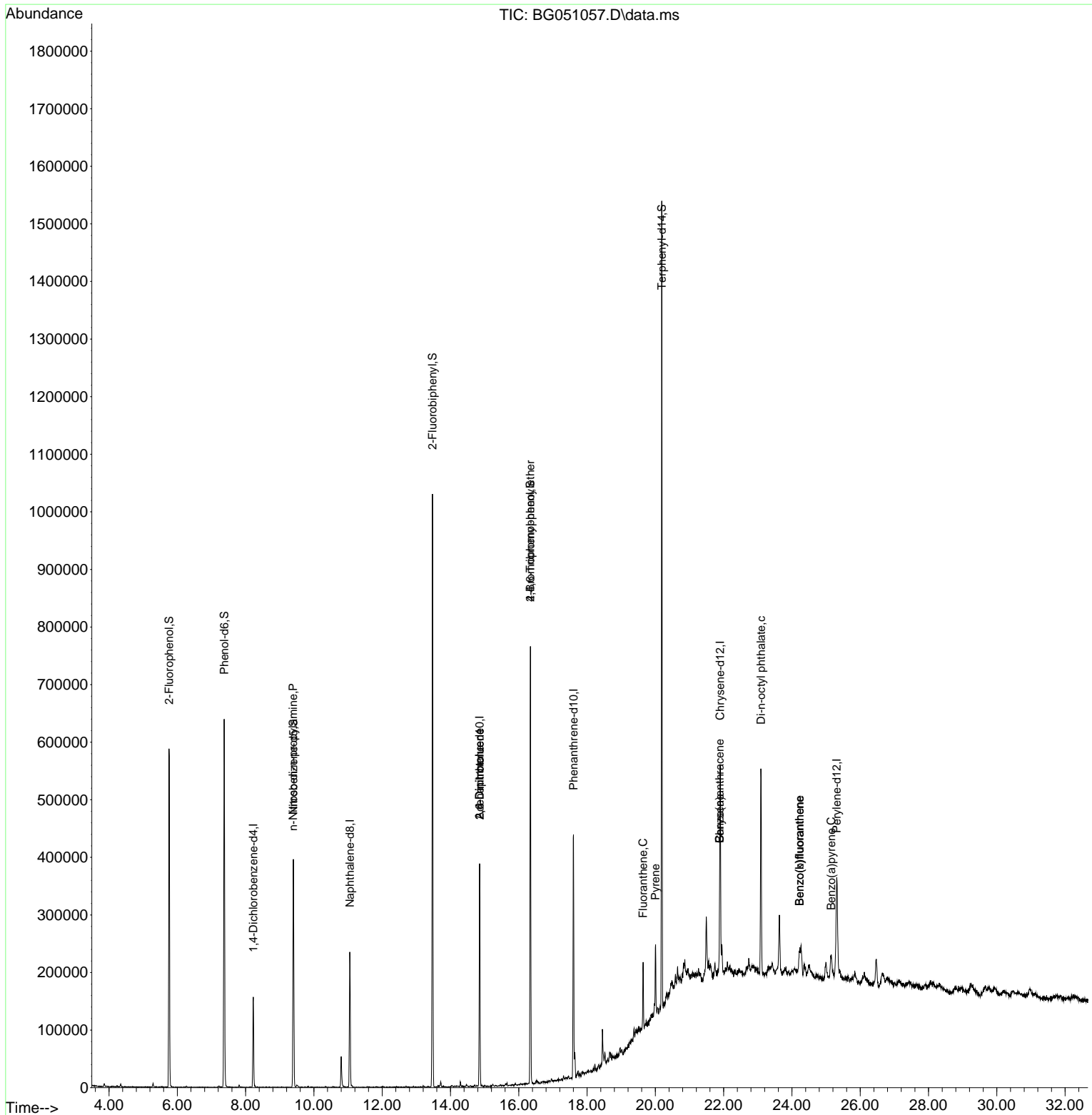
Internal Standards						
1) 1,4-Dichlorobenzene-d4	8.226	152	43894	20.000	ng	0.00
21) Naphthalene-d8	11.052	136	201583	20.000	ng	# 0.00
39) Acenaphthene-d10	14.854	164	134740	20.000	ng	0.00
64) Phenanthrene-d10	17.603	188	262162	20.000	ng	# 0.00
76) Chrysene-d12	21.898	240	209156	20.000	ng	# 0.00
86) Perylene-d12	25.312	264	211140	20.000	ng	0.00
System Monitoring Compounds						
5) 2-Fluorophenol	5.758	112	257811	87.862	ng	0.00
7) Phenol-d6	7.374	99	370246	89.397	ng	0.00
23) Nitrobenzene-d5	9.401	82	259632	57.014	ng	0.00
42) 2,4,6-Tribromophenol	16.340	330	119453	88.590	ng	0.00
45) 2-Fluorobiphenyl	13.473	172	531303	62.303	ng	0.00
79) Terphenyl-d14	20.188	244	635623	55.607	ng	0.00
Target Compounds						
						Qvalue
19) n-Nitroso-di-n-propyla...	9.395	70	35595	11.630	ng	# 69
51) 2,6-Dinitrotoluene	14.854	165	17774	8.146	ng	# 11
57) 2,4-Dinitrotoluene	14.854	165	17774	5.741	ng	# 16
67) 4-Bromophenyl-phenylether	16.340	248	9338	3.400	ng	# 1
75) Fluoranthene	19.642	202	75507	4.401	ng	95
78) Pyrene	20.006	202	77105	4.914	ng	99
81) Benzo(a)anthracene	21.881	228	43630	3.038	ng	97
83) Chrysene	21.881	228	43630	3.220	ng	95
85) Di-n-octyl phthalate	23.091	149	65445	4.094	ng	# 45
88) Benzo(b)fluoranthene	24.225	252	61643	4.638	ng	# 85
89) Benzo(k)fluoranthene	24.225	252	61643	4.650	ng	# 89
90) Benzo(a)pyrene	25.153	252	42812	3.773	ng	# 85

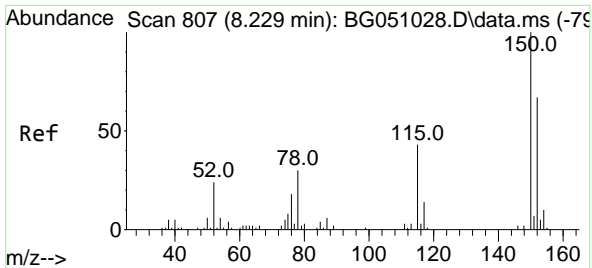
(#) = qualifier out of range (m) = manual integration (+) = signals summed

Data Path : Z:\svoasrv\HPCHEM1\BNA_G\Data\BG111621\
 Data File : BG051057.D
 Acq On : 16 Nov 2021 1:33
 Operator : CG/JU
 Sample : M4657-01
 Misc :
 ALS Vial : 17 Sample Multiplier: 1

Instrument :
 BNA_G
 ClientSampleId :
 VWE-B31-111121-0-10

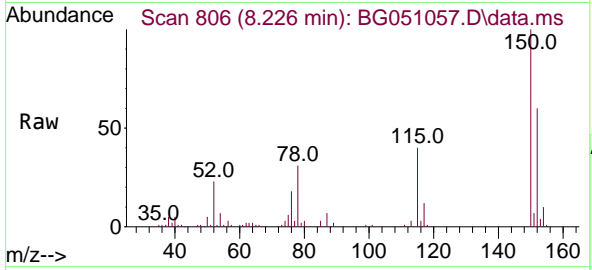
Quant Time: Nov 16 02:24:26 2021
 Quant Method : Z:\svoasrv\HPCHEM1\BNA_G\Methods\8270-BG111321.M
 Quant Title : ASP BNA STANDARDS FOR 5 POINT CALIBRATION
 QLast Update : Mon Nov 15 03:55:35 2021
 Response via : Initial Calibration



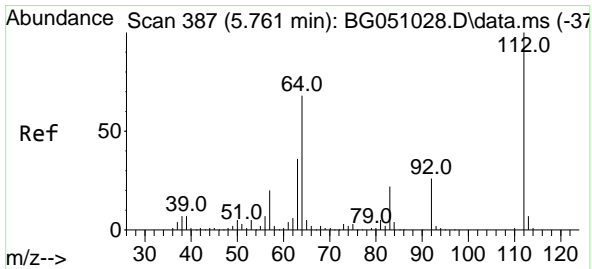
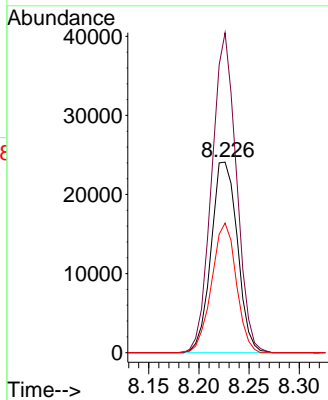
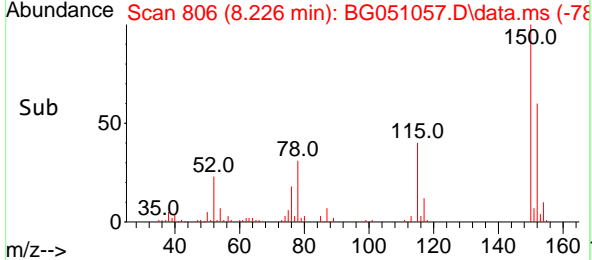


#1
 1,4-Dichlorobenzene-d4
 Concen: 20.000 ng
 RT: 8.226 min Scan# 80
 Delta R.T. -0.003 min
 Lab File: BG051057.D
 Acq: 16 Nov 2021 1:33

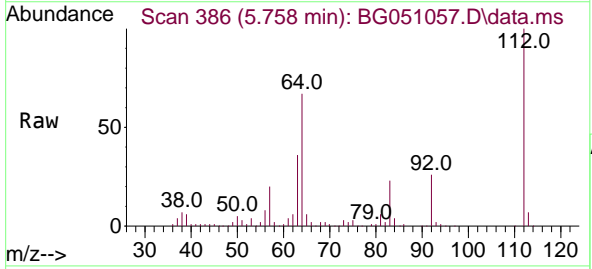
Instrument :
 BNA_G
 ClientSampleId :
 VWE-B31-111121-0-10



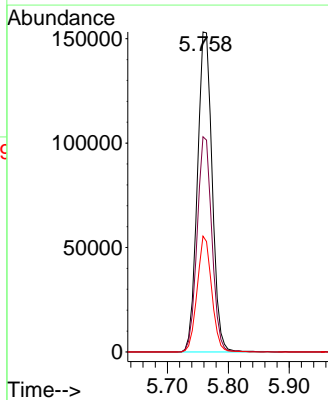
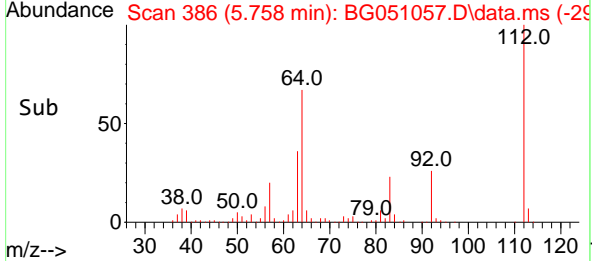
Tgt Ion:152 Resp: 43894
 Ion Ratio Lower Upper
 152 100
 150 167.9 119.4 179.0
 115 68.0 60.2 90.4

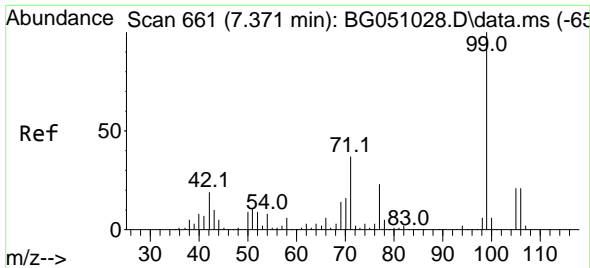


#5
 2-Fluorophenol
 Concen: 87.862 ng
 RT: 5.758 min Scan# 386
 Delta R.T. -0.003 min
 Lab File: BG051057.D
 Acq: 16 Nov 2021 1:33



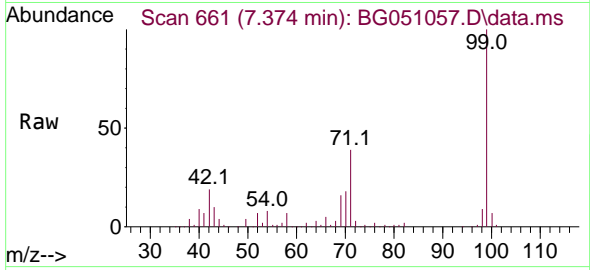
Tgt Ion:112 Resp: 257811
 Ion Ratio Lower Upper
 112 100
 64 67.2 46.7 70.1
 63 36.2 35.3 52.9



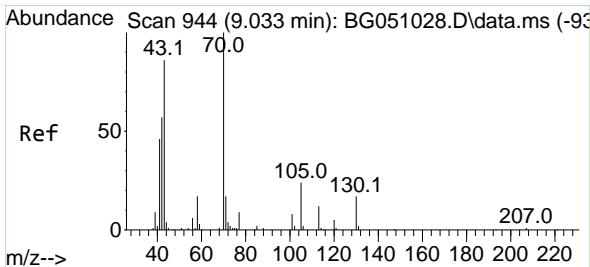
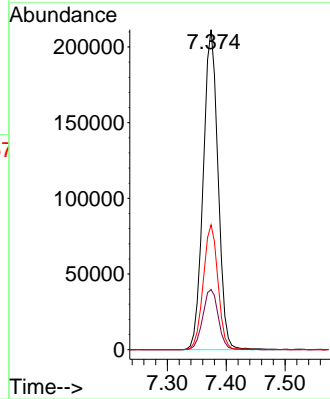
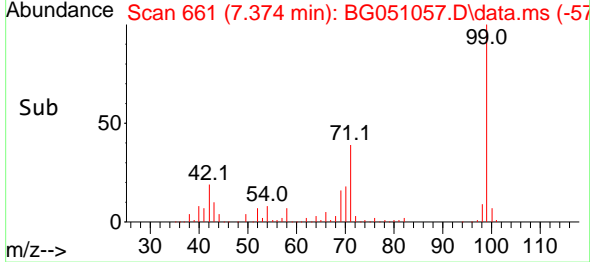


#7
 Phenol-d6
 Concen: 89.397 ng
 RT: 7.374 min Scan# 60
 Delta R.T. 0.003 min
 Lab File: BG051057.D
 Acq: 16 Nov 2021 1:33

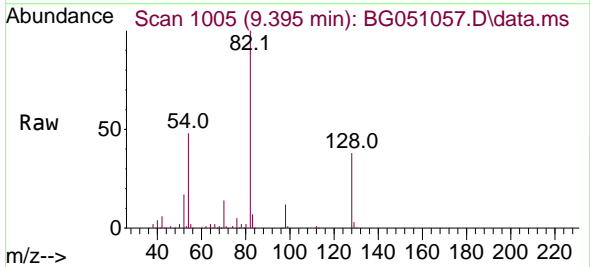
Instrument :
 BNA_G
 ClientSampleId :
 VWE-B31-111121-0-10



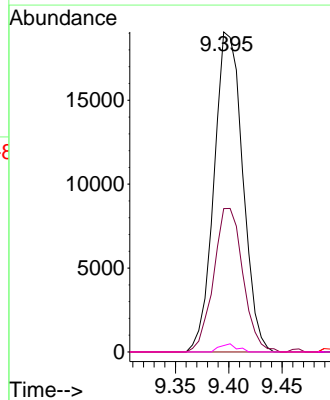
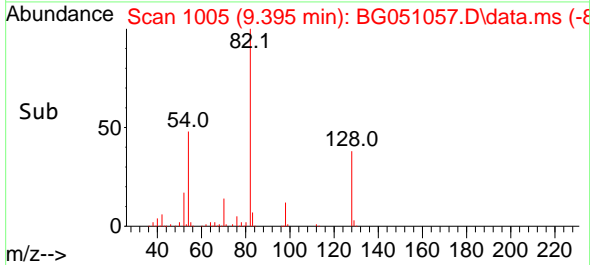
Tgt Ion: 99 Resp: 370246
 Ion Ratio Lower Upper
 99 100
 42 18.8 20.5 30.7#
 71 39.0 41.5 62.3#

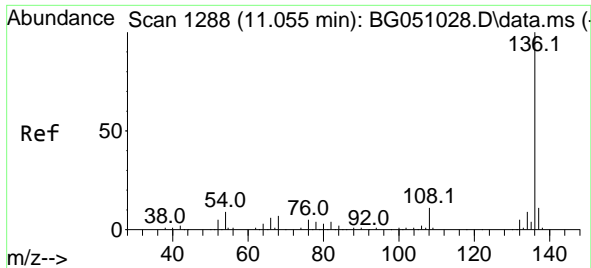


#19
 n-Nitroso-di-n-propylamine
 Concen: 11.630 ng
 RT: 9.395 min Scan# 1005
 Delta R.T. 0.362 min
 Lab File: BG051057.D
 Acq: 16 Nov 2021 1:33



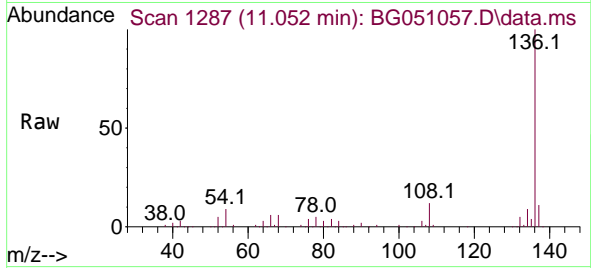
Tgt Ion: 70 Resp: 35595
 Ion Ratio Lower Upper
 70 100
 42 44.8 54.5 81.7#
 101 0.0 9.0 13.6#
 130 2.0 17.0 25.6#



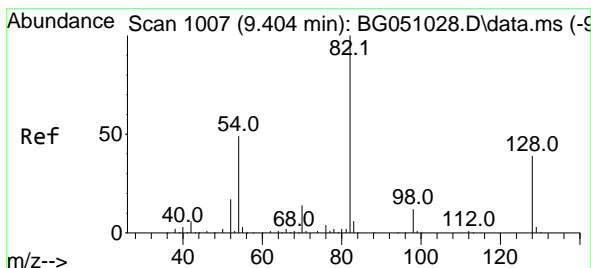
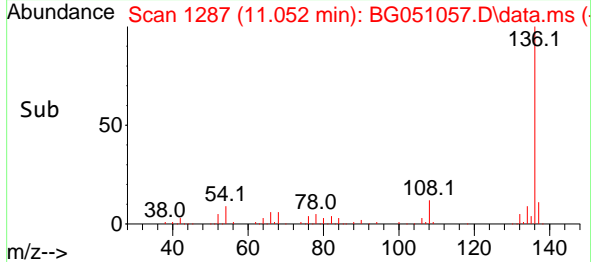
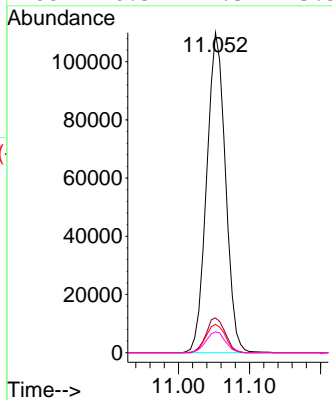


#21
 Naphthalene-d8
 Concen: 20.000 ng
 RT: 11.052 min Scan# 1106
 Delta R.T. -0.002 min
 Lab File: BG051057.D
 Acq: 16 Nov 2021 1:33

Instrument :
 BNA_G
 ClientSampleId :
 VWE-B31-111121-0-10

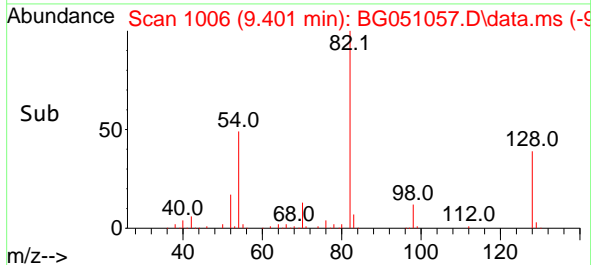
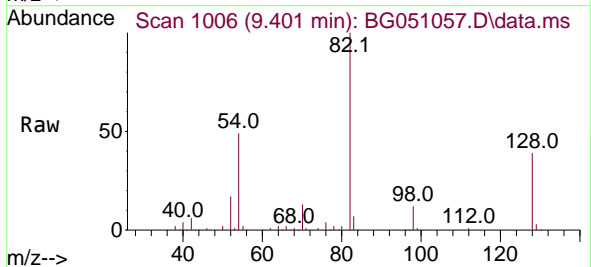
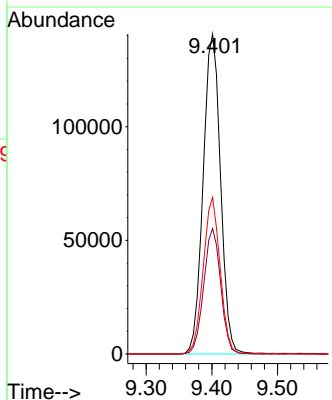


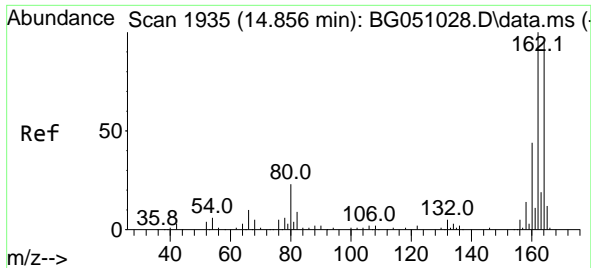
Tgt Ion:136 Resp: 201583
 Ion Ratio Lower Upper
 136 100
 137 10.8 8.2 12.2
 54 8.9 5.5 8.3#
 68 6.5 2.3 3.5#



#23
 Nitrobenzene-d5
 Concen: 57.014 ng
 RT: 9.401 min Scan# 1006
 Delta R.T. -0.003 min
 Lab File: BG051057.D
 Acq: 16 Nov 2021 1:33

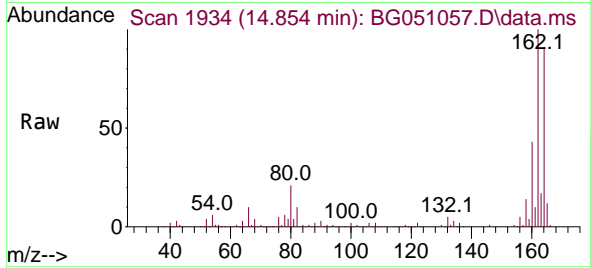
Tgt Ion: 82 Resp: 259632
 Ion Ratio Lower Upper
 82 100
 128 39.2 29.8 44.6
 54 48.9 45.8 68.8



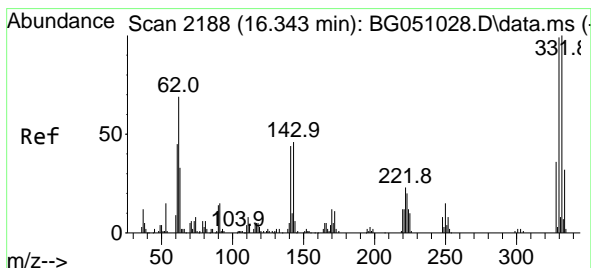
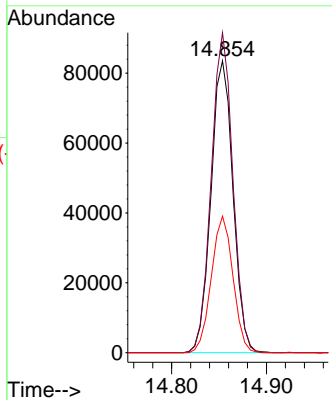
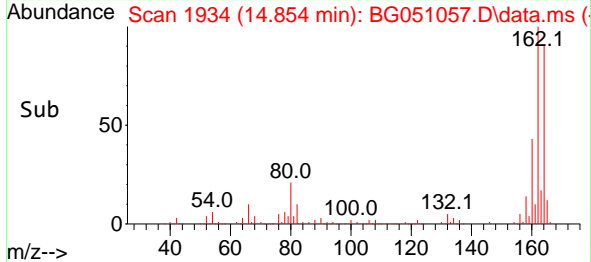


#39
 Acenaphthene-d10
 Concen: 20.000 ng
 RT: 14.854 min Scan# 1934
 Delta R.T. -0.002 min
 Lab File: BG051057.D
 Acq: 16 Nov 2021 1:33

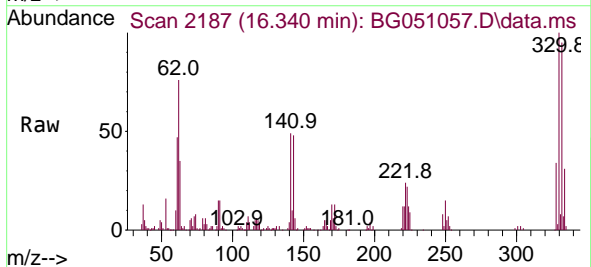
Instrument :
 BNA_G
 ClientSampleId :
 VWE-B31-111121-0-10



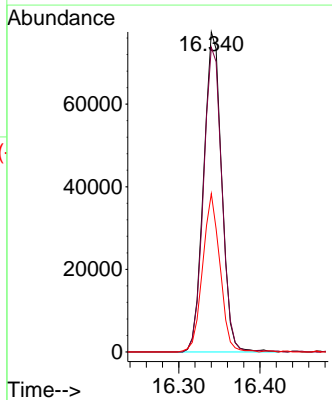
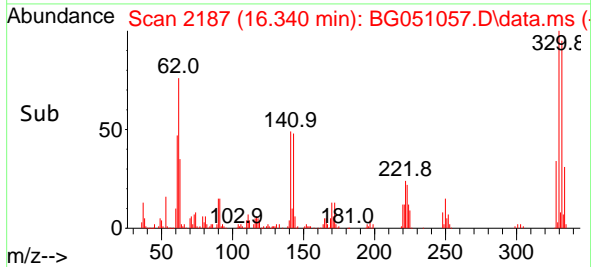
Tgt Ion:164 Resp: 134740
 Ion Ratio Lower Upper
 164 100
 162 109.7 81.4 122.0
 160 46.8 34.9 52.3

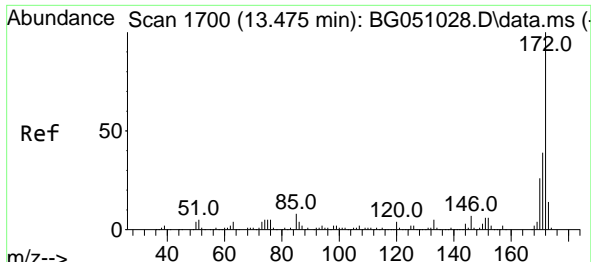


#42
 2,4,6-Tribromophenol
 Concen: 88.590 ng
 RT: 16.340 min Scan# 2187
 Delta R.T. -0.003 min
 Lab File: BG051057.D
 Acq: 16 Nov 2021 1:33



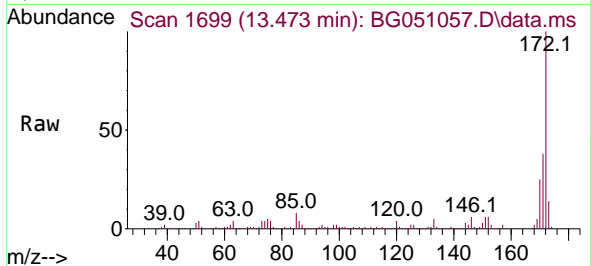
Tgt Ion:330 Resp: 119453
 Ion Ratio Lower Upper
 330 100
 332 96.8 77.3 115.9
 141 47.3 35.6 53.4



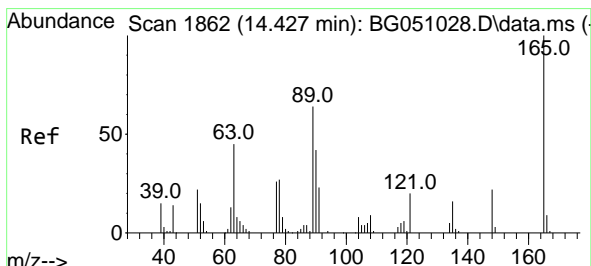
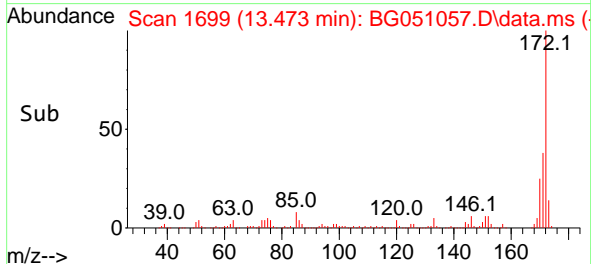
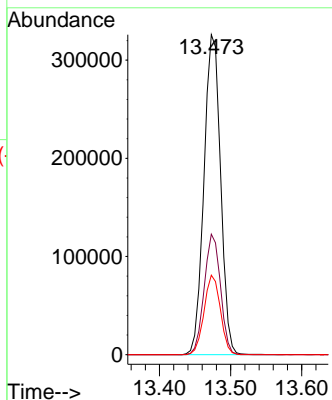


#45
 2-Fluorobiphenyl
 Concen: 62.303 ng
 RT: 13.473 min Scan# 1
 Delta R.T. -0.002 min
 Lab File: BG051057.D
 Acq: 16 Nov 2021 1:33

Instrument :
 BNA_G
 ClientSampleId :
 VWE-B31-111121-0-10

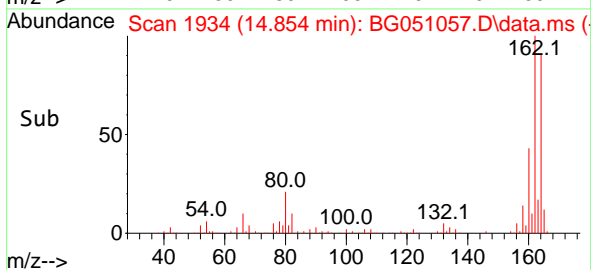
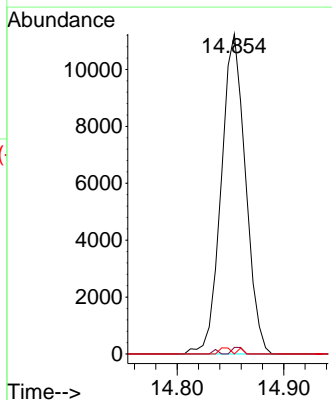
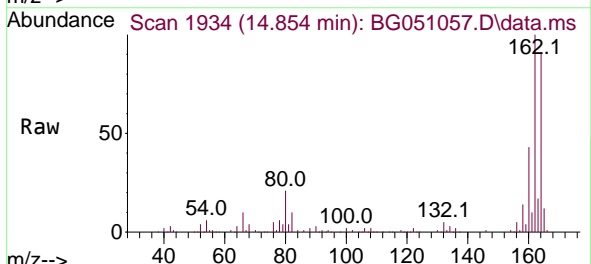


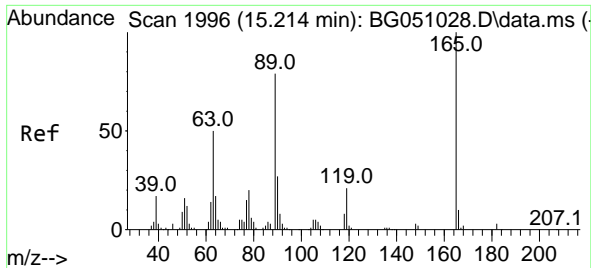
Tgt Ion:172 Resp: 531303
 Ion Ratio Lower Upper
 172 100
 171 37.7 28.6 43.0
 170 24.9 18.6 27.8



#51
 2,6-Dinitrotoluene
 Concen: 8.146 ng
 RT: 14.854 min Scan# 1934
 Delta R.T. 0.427 min
 Lab File: BG051057.D
 Acq: 16 Nov 2021 1:33

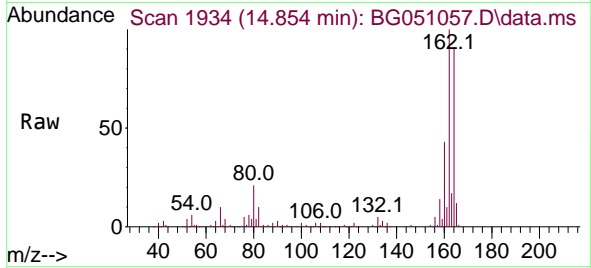
Tgt Ion:165 Resp: 17774
 Ion Ratio Lower Upper
 165 100
 63 2.1 63.3 94.9#
 89 0.0 63.4 95.0#





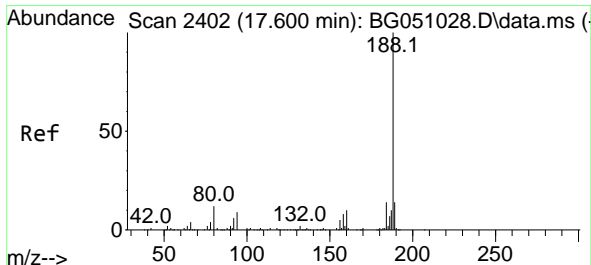
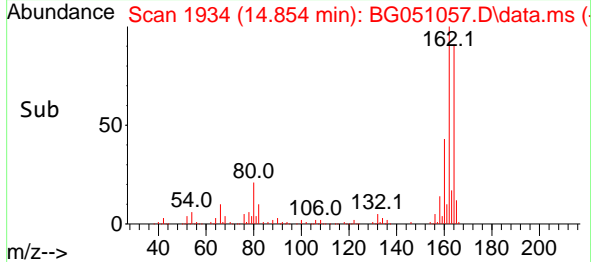
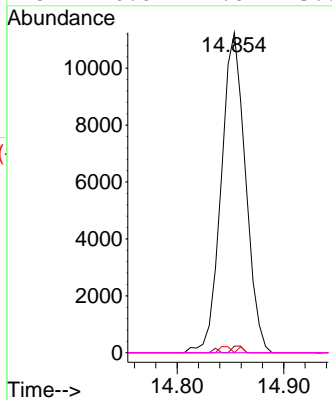
#57
 2,4-Dinitrotoluene
 Concen: 5.741 ng
 RT: 14.854 min Scan# 1934
 Delta R.T. -0.361 min
 Lab File: BG051057.D
 Acq: 16 Nov 2021 1:33

Instrument :
 BNA_G
 ClientSampleId :
 VWE-B31-111121-0-10



Tgt Ion:165 Resp: 17774

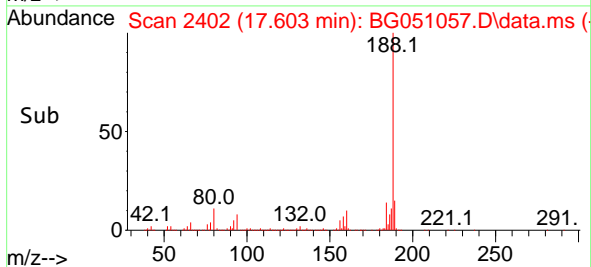
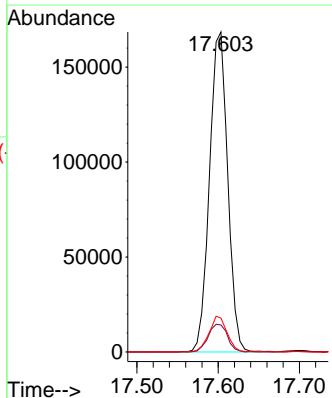
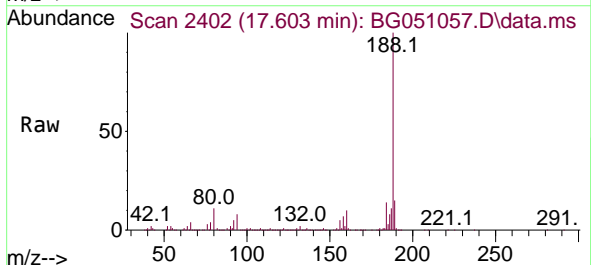
Ion	Ratio	Lower	Upper
165	100		
63	2.1	48.0	72.0#
89	0.0	65.4	98.0#
182	0.0	2.0	3.0#

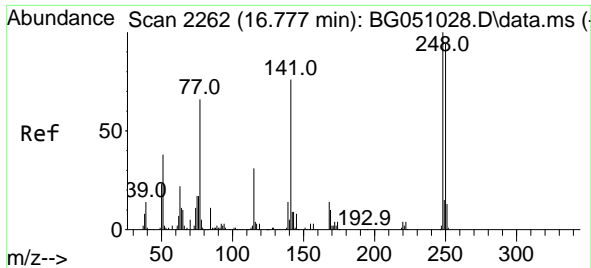


#64
 Phenanthrene-d10
 Concen: 20.000 ng
 RT: 17.603 min Scan# 2402
 Delta R.T. 0.003 min
 Lab File: BG051057.D
 Acq: 16 Nov 2021 1:33

Tgt Ion:188 Resp: 262162

Ion	Ratio	Lower	Upper
188	100		
94	8.4	5.4	8.0#
80	10.6	3.7	5.5#

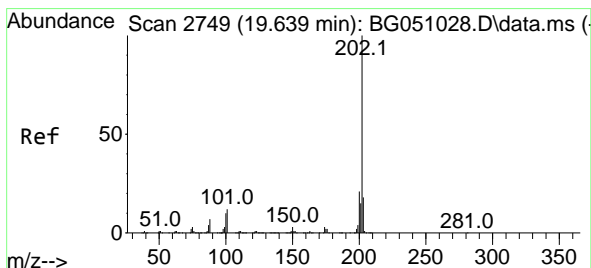
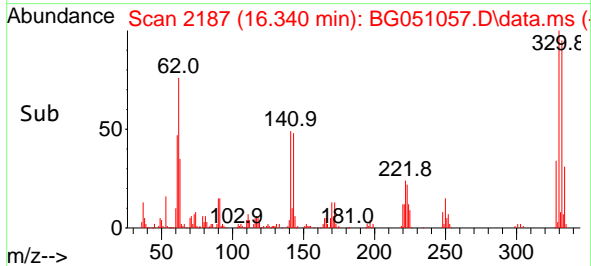
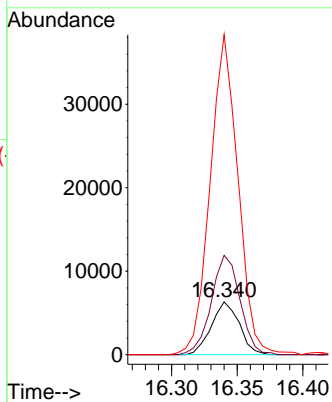
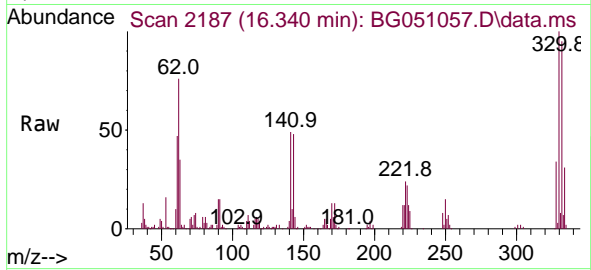




#67
 4-Bromophenyl-phenylether
 Concen: 3.400 ng
 RT: 16.340 min Scan# 2187
 Delta R.T. -0.437 min
 Lab File: BG051057.D
 Acq: 16 Nov 2021 1:33

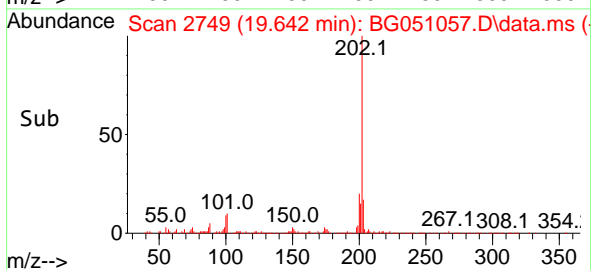
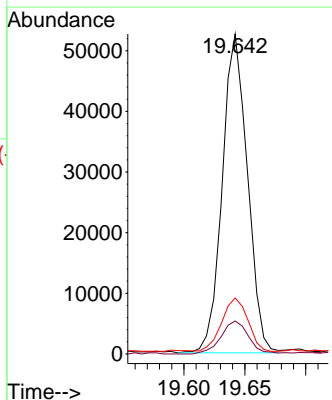
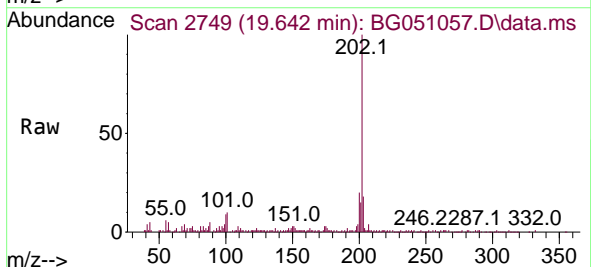
Instrument :
 BNA_G
 ClientSampleId :
 VWE-B31-111121-0-10

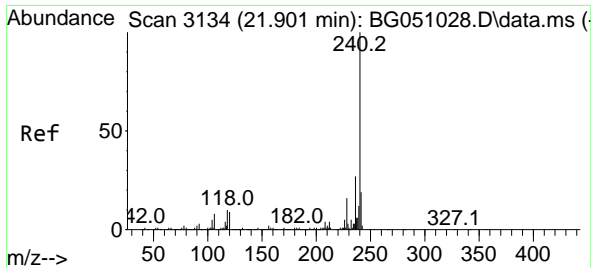
Tgt Ion	Resp	Lower	Upper
248	100		
250	188.2	76.1	114.1#
141	606.6	65.4	98.2#



#75
 Fluoranthene
 Concen: 4.401 ng
 RT: 19.642 min Scan# 2749
 Delta R.T. 0.003 min
 Lab File: BG051057.D
 Acq: 16 Nov 2021 1:33

Tgt Ion	Resp	Lower	Upper
202	100		
101	10.3	0.0	24.7
203	17.5	0.0	38.5

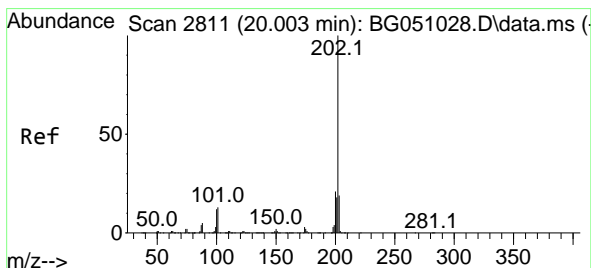
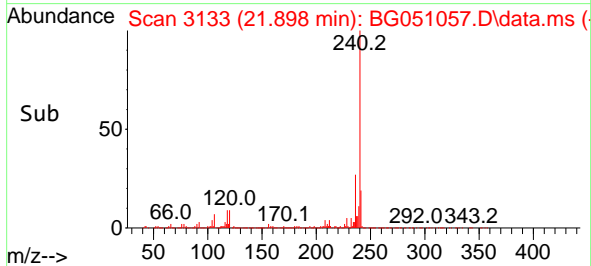
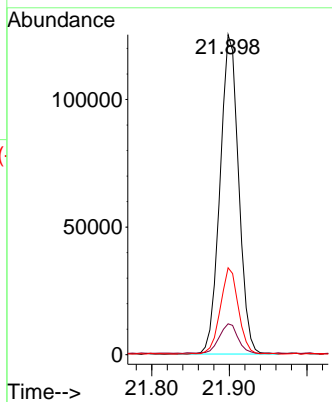
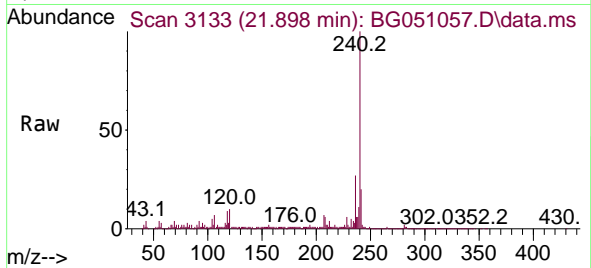




#76
 Chrysene-d12
 Concen: 20.000 ng
 RT: 21.898 min Scan# 3133
 Delta R.T. -0.002 min
 Lab File: BG051057.D
 Acq: 16 Nov 2021 1:33

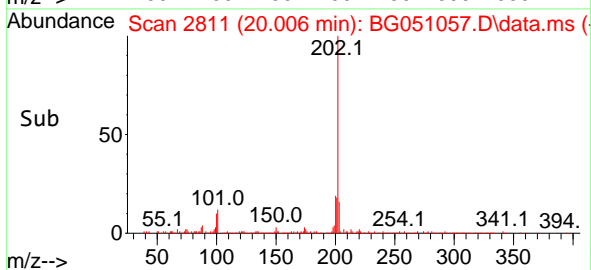
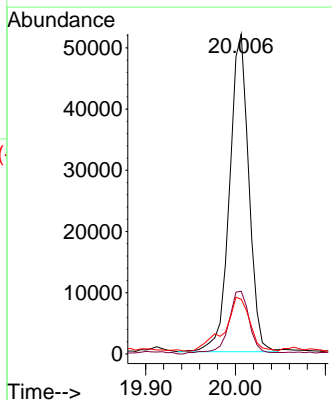
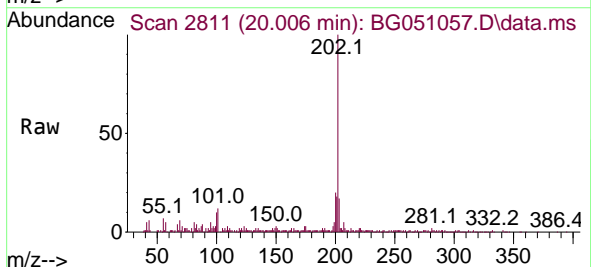
Instrument :
 BNA_G
 ClientSampleId :
 VWE-B31-111121-0-10

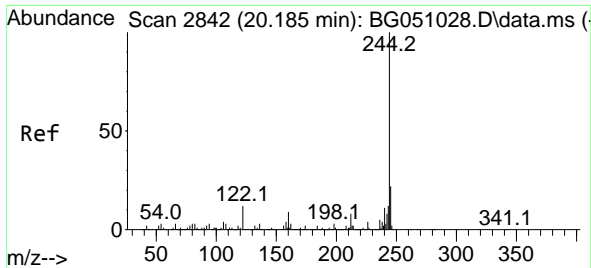
Tgt Ion	Resp	Lower	Upper
240	100		
120	9.7	4.2	6.2#
236	27.2	21.8	32.6



#78
 Pyrene
 Concen: 4.914 ng
 RT: 20.006 min Scan# 2811
 Delta R.T. 0.003 min
 Lab File: BG051057.D
 Acq: 16 Nov 2021 1:33

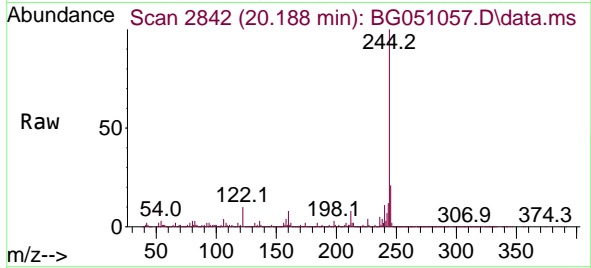
Tgt Ion	Resp	Lower	Upper
202	100		
200	19.6	15.8	23.8
203	17.1	14.6	21.8



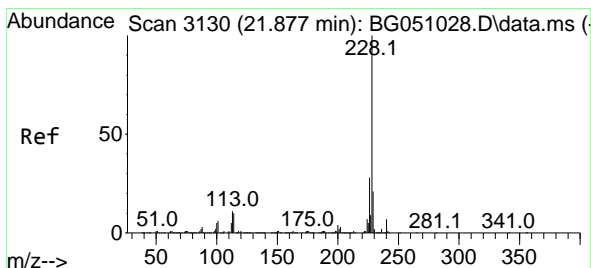
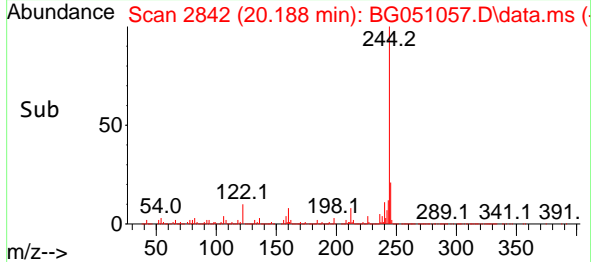
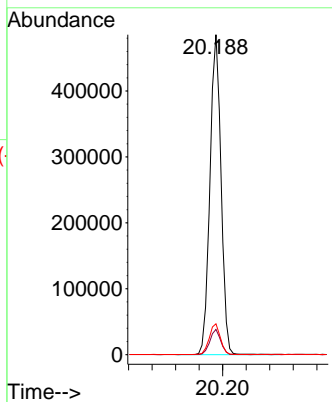


#79
 Terphenyl-d14
 Concen: 55.607 ng
 RT: 20.188 min Scan# 21
 Delta R.T. 0.003 min
 Lab File: BG051057.D
 Acq: 16 Nov 2021 1:33

Instrument :
 BNA_G
 ClientSampleId :
 VWE-B31-111121-0-10

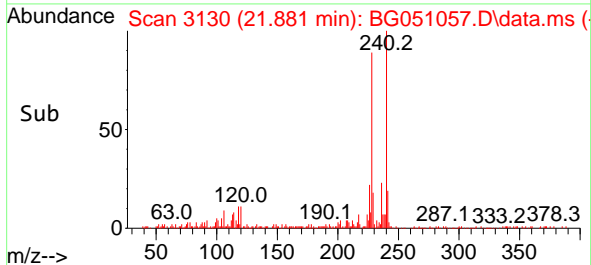
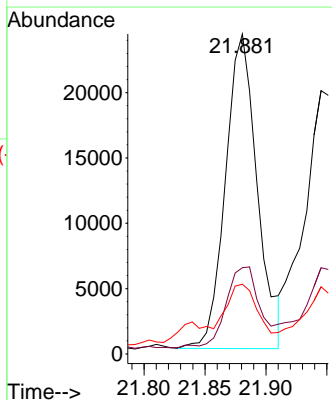
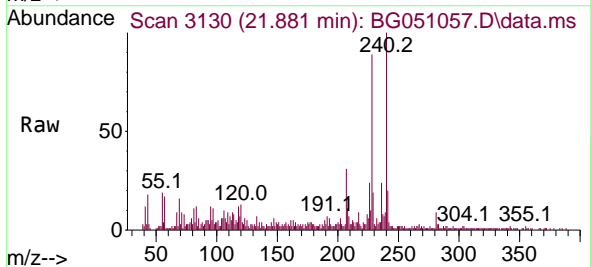


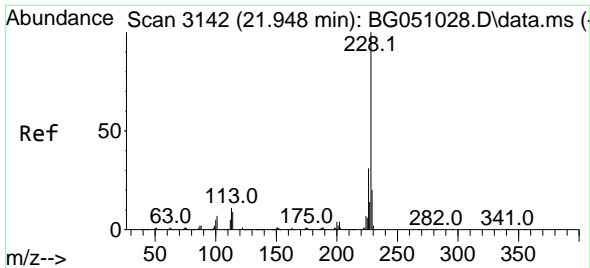
Tgt Ion:244 Resp: 635623
 Ion Ratio Lower Upper
 244 100
 212 7.9 6.9 10.3
 122 9.6 5.0 7.6#



#81
 Benzo(a)anthracene
 Concen: 3.038 ng
 RT: 21.881 min Scan# 3130
 Delta R.T. 0.003 min
 Lab File: BG051057.D
 Acq: 16 Nov 2021 1:33

Tgt Ion:228 Resp: 43630
 Ion Ratio Lower Upper
 228 100
 226 26.9 22.7 34.1
 229 21.8 16.0 24.0

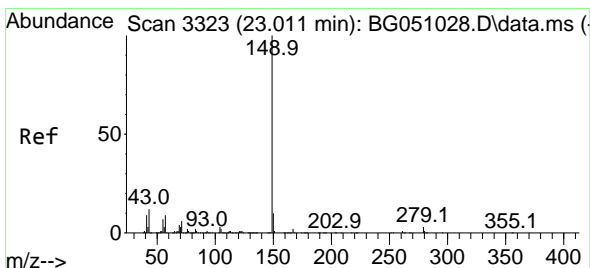
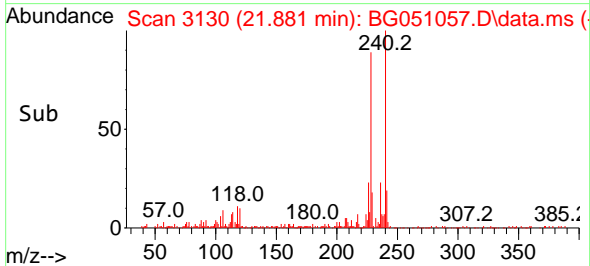
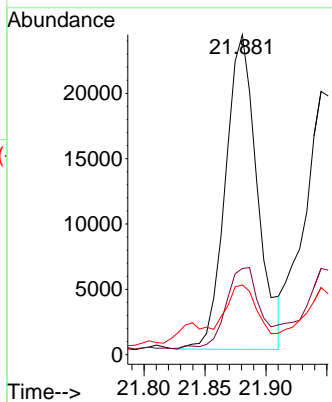
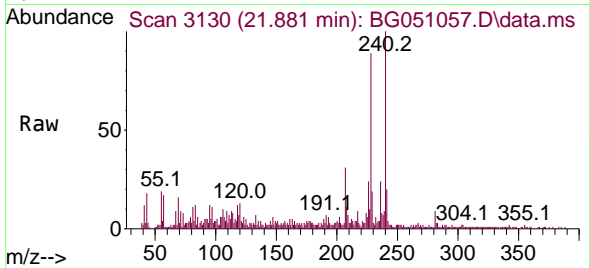




#83
 Chrysene
 Concen: 3.220 ng
 RT: 21.881 min Scan# 3142
 Delta R.T. -0.067 min
 Lab File: BG051057.D
 Acq: 16 Nov 2021 1:33

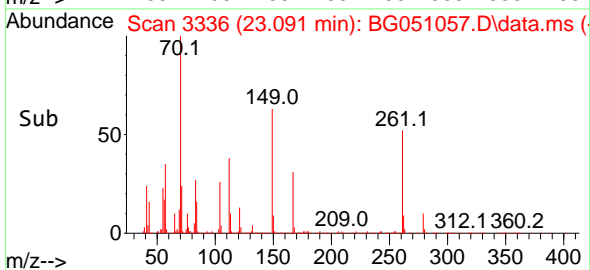
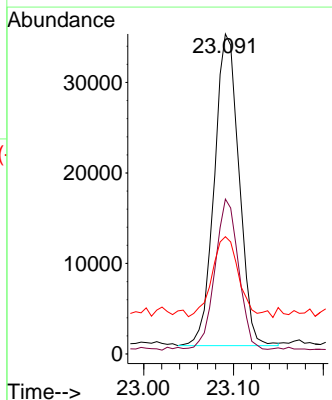
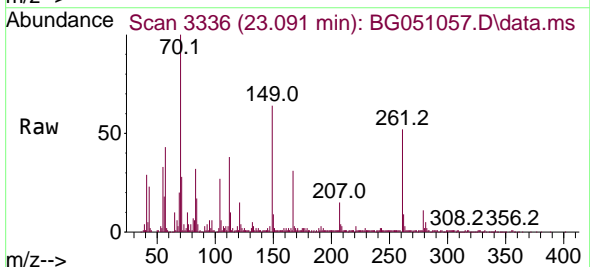
Instrument : BNA_G
 ClientSampleId : VWE-B31-111121-0-10

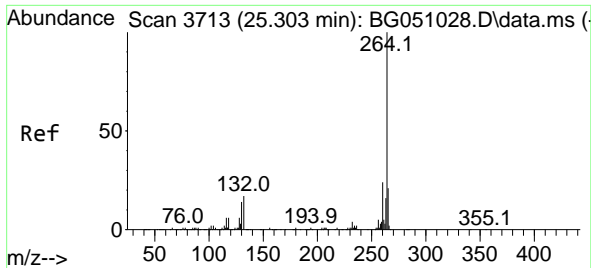
Tgt Ion	Resp	Lower	Upper
228	43630	100	100
226	26.9	23.1	34.7
229	21.8	15.3	22.9



#85
 Di-n-octyl phthalate
 Concen: 4.094 ng
 RT: 23.091 min Scan# 3336
 Delta R.T. 0.080 min
 Lab File: BG051057.D
 Acq: 16 Nov 2021 1:33

Tgt Ion	Resp	Lower	Upper
149	65445	100	100
167	46.1	1.4	2.2#
43	27.3	8.6	12.8#



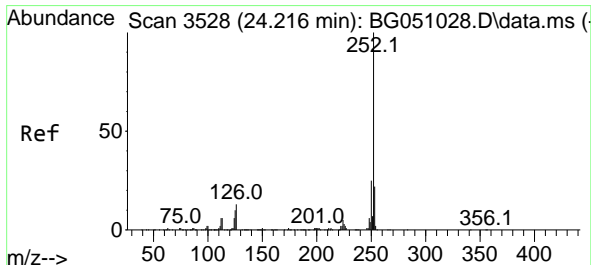
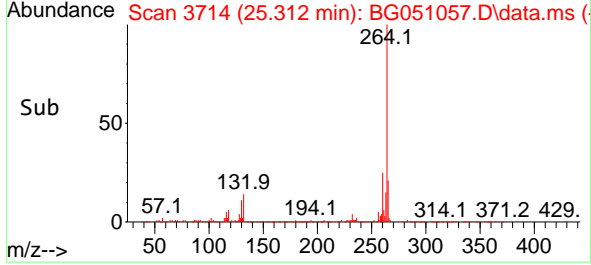
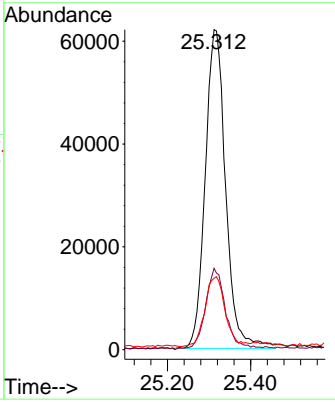
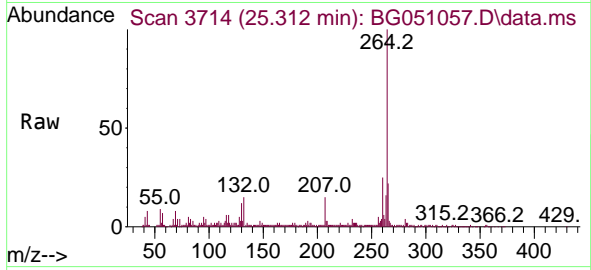


#86
 Perylene-d12
 Concen: 20.000 ng
 RT: 25.312 min Scan# 31
 Delta R.T. 0.009 min
 Lab File: BG051057.D
 Acq: 16 Nov 2021 1:33

Instrument :
 BNA_G
 ClientSampleId :
 VWE-B31-111121-0-10

Tgt Ion:264 Resp: 211140

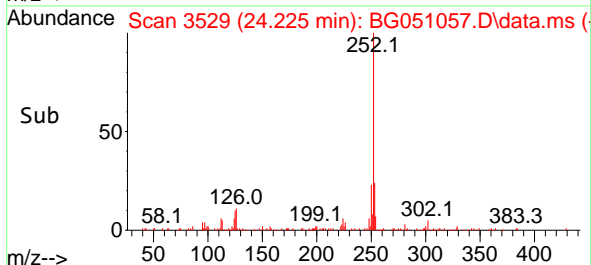
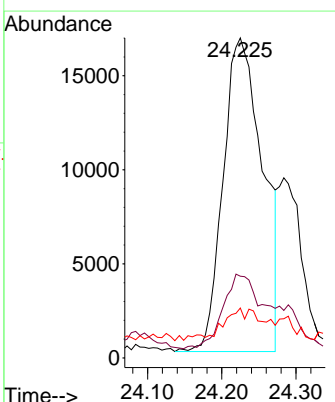
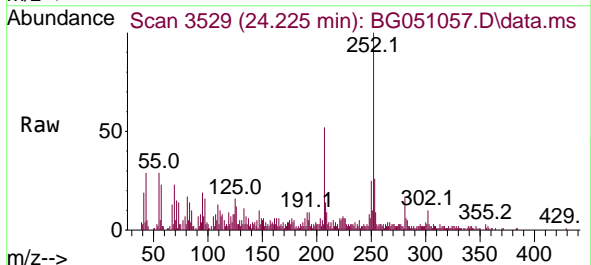
Ion	Ratio	Lower	Upper
264	100		
260	25.4	19.4	29.2
265	22.3	16.9	25.3

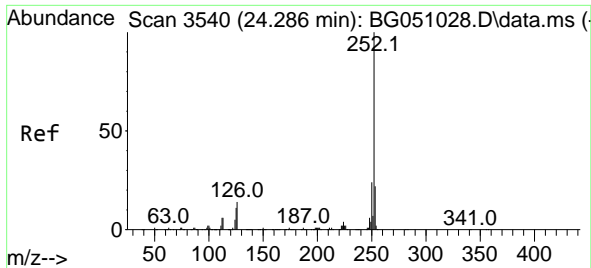


#88
 Benzo(b)fluoranthene
 Concen: 4.638 ng
 RT: 24.225 min Scan# 3529
 Delta R.T. 0.009 min
 Lab File: BG051057.D
 Acq: 16 Nov 2021 1:33

Tgt Ion:252 Resp: 61643

Ion	Ratio	Lower	Upper
252	100		
253	25.5	16.2	24.4#
125	15.6	3.0	4.4#

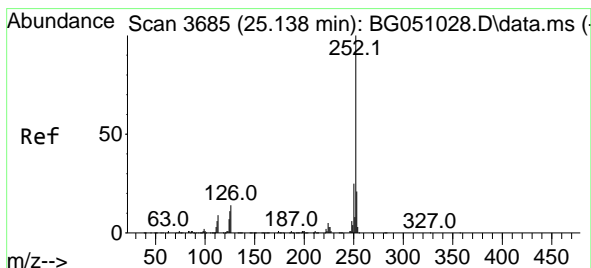
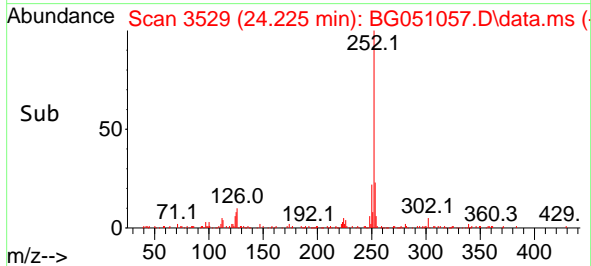
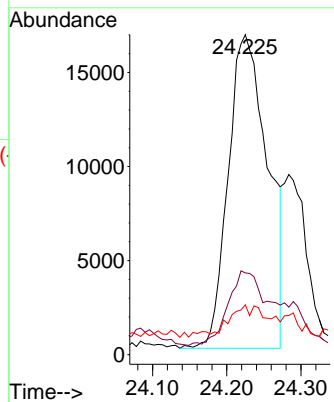
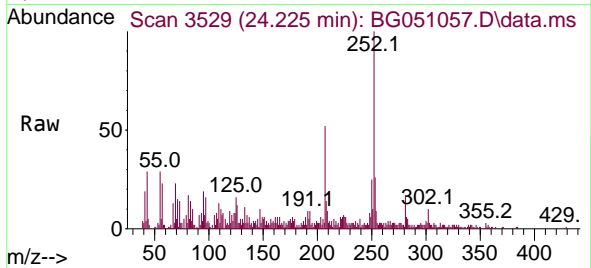




#89
 Benzo(k)fluoranthene
 Concen: 4.650 ng
 RT: 24.225 min Scan# 31
 Delta R.T. -0.061 min
 Lab File: BG051057.D
 Acq: 16 Nov 2021 1:33

Instrument :
 BNA_G
 ClientSampleId :
 VWE-B31-111121-0-10

Tgt Ion:252 Resp: 61643
 Ion Ratio Lower Upper
 252 100
 253 25.5 18.0 27.0
 125 15.6 3.1 4.7#



#90
 Benzo(a)pyrene
 Concen: 3.773 ng
 RT: 25.153 min Scan# 3687
 Delta R.T. 0.015 min
 Lab File: BG051057.D
 Acq: 16 Nov 2021 1:33

Tgt Ion:252 Resp: 42812
 Ion Ratio Lower Upper
 252 100
 253 25.7 16.6 25.0#
 125 17.3 3.5 5.3#

