

Data Path : Z:\svoasrv\HPCHEM1\BNA_G\Data\BG111622\
 Data File : BG055655.D
 Acq On : 16 Nov 2022 20:23
 Operator : CG/JU
 Sample : N5619-01
 Misc :
 ALS Vial : 16 Sample Multiplier: 1

Instrument :
 BNA_G
 ClientSampleId :
 OR-02-111422

Integration Parameters: rteint.p
 Integrator: RTE
 Smoothing : ON
 Sampling : 1
 Start Thrs : 0.2
 Stop Thrs : 0
 Filtering: 5
 Min Area: 3 % of largest Peak
 Max Peaks: 100
 Peak Location: TOP

If leading or trailing edge < 100 prefer < Baseline drop else tangent >
 Peak separation: 5

Method : Z:\svoasrv\HPCHEM1\BNA_G\Methods\8270-BG111622.M
 Title : ASP BNA STANDARDS FOR 5 POINT CALIBRATION

Signal : TIC: BG055655.D\data.ms

peak #	R.T. min	first scan	max scan	last scan	PK TY	peak height	corr. area	corr. % max.	% of total
1	3.861	92	97	103	rBV	17478	28773	1.06%	0.121%
2	5.307	337	343	352	rBV	116986	181782	6.70%	0.764%
3	5.783	416	424	436	rVB	841437	1353841	49.90%	5.692%
4	7.392	687	698	711	rBV	866372	1494637	55.09%	6.284%
5	8.250	832	844	851	rBV	182979	319633	11.78%	1.344%
6	9.425	1036	1044	1050	rBV	514044	881613	32.50%	3.707%
7	10.824	1276	1282	1297	rVB	212923	373969	13.78%	1.572%
8	11.082	1319	1326	1332	rVV	265700	487071	17.95%	2.048%
9	11.135	1332	1335	1340	rVV	29588	48736	1.80%	0.205%
10	11.217	1344	1349	1355	rVB	23763	38548	1.42%	0.162%
11	11.770	1431	1443	1448	rBV10	14786	41785	1.54%	0.176%
12	12.069	1489	1494	1499	rBV	26336	43213	1.59%	0.182%
13	12.457	1555	1560	1565	rBV4	17378	30455	1.12%	0.128%
14	12.721	1600	1605	1610	rVB	25124	44863	1.65%	0.189%
15	12.933	1637	1641	1652	rVB3	26310	59871	2.21%	0.252%
16	13.397	1715	1720	1729	rVB	39503	66171	2.44%	0.278%
17	13.503	1730	1738	1748	rVB	1276021	2020897	74.49%	8.496%
18	13.679	1763	1768	1776	rBV7	20715	55842	2.06%	0.235%
19	13.750	1776	1780	1785	rVV	38267	60078	2.21%	0.253%
20	14.055	1825	1832	1839	rVB6	19260	52297	1.93%	0.220%
21	14.196	1851	1856	1860	rVB2	30718	48620	1.79%	0.204%
22	14.249	1860	1865	1869	rVB3	29604	45780	1.69%	0.192%
23	14.302	1870	1874	1876	rBV4	22200	34303	1.26%	0.144%
24	14.331	1876	1879	1883	rVB3	48616	62945	2.32%	0.265%
25	14.443	1893	1898	1903	rVB4	16406	34910	1.29%	0.147%
26	14.602	1920	1925	1935	rBV3	21770	52194	1.92%	0.219%
27	14.872	1960	1971	1977	rBV	390522	655141	24.15%	2.754%
28	14.936	1977	1982	1988	rVB	57142	92162	3.40%	0.387%
29	15.266	2031	2038	2046	rVB2	59972	126600	4.67%	0.532%
30	15.342	2046	2051	2053	rBV2	18045	28742	1.06%	0.121%
31	15.483	2070	2075	2080	rBV5	19814	36775	1.36%	0.155%
32	15.653	2097	2104	2107	rBV7	16521	38879	1.43%	0.163%
33	15.818	2124	2132	2137	rVB7	10720	27823	1.03%	0.117%
34	15.912	2142	2148	2156	rVV	109292	177275	6.53%	0.745%
35	16.088	2172	2178	2188	rVB3	29329	72124	2.66%	0.303%
36	16.200	2195	2197	2203	rVB2	21047	31206	1.15%	0.131%

Data Path : Z:\svoasrv\HPCHEM1\BNA_G\Data\BG111622\
 Data File : BG055655.D
 Acq On : 16 Nov 2022 20:23
 Operator : CG/JU
 Sample : N5619-01
 Misc :
 ALS Vial : 16 Sample Multiplier: 1

Instrument :
 BNA_G
 ClientSampleId :
 OR-02-111422

Integration Parameters: rteint.p
 Integrator: RTE
 Smoothing : ON
 Sampling : 1
 Start Thrs: 0.2
 Stop Thrs : 0
 Filtering: 5
 Min Area: 3 % of largest Peak
 Max Peaks: 100
 Peak Location: TOP

If leading or trailing edge < 100 prefer < Baseline drop else tangent >
 Peak separation: 5

Method : Z:\svoasrv\HPCHEM1\BNA_G\Methods\8270-BG111622.M
 Title : ASP BNA STANDARDS FOR 5 POINT CALIBRATION

37	16.352	2217	2223	2232	rVB	1047412	1618910	59.67%	6.806%
38	16.576	2253	2261	2267	rBV2	46376	92589	3.41%	0.389%
39	16.911	2312	2318	2322	rBV3	22630	47696	1.76%	0.201%
40	16.958	2323	2326	2332	rVB4	18443	31496	1.16%	0.132%
41	17.063	2340	2344	2349	rVB3	18848	30664	1.13%	0.129%
42	17.340	2387	2391	2395	rVV2	19740	29255	1.08%	0.123%
43	17.392	2396	2400	2403	rVV2	25765	40149	1.48%	0.169%
44	17.434	2403	2407	2413	rVB	45393	73590	2.71%	0.309%
45	17.616	2431	2438	2441	rBV	465810	747309	27.55%	3.142%
46	17.657	2441	2445	2452	rVV	603496	888811	32.76%	3.737%
47	17.745	2455	2460	2465	rVV	139110	214817	7.92%	0.903%
48	17.804	2466	2470	2474	rVB	20855	37899	1.40%	0.159%
49	18.009	2500	2505	2511	rBV	46746	81190	2.99%	0.341%
50	18.191	2533	2536	2543	rVB	21849	31656	1.17%	0.133%
51	18.256	2543	2547	2556	rVB	46362	66584	2.45%	0.280%
52	18.338	2557	2561	2567	rBV4	16956	39527	1.46%	0.166%
53	18.474	2579	2584	2590	rBV2	174255	329889	12.16%	1.387%
54	18.532	2590	2594	2600	rVB	128520	192371	7.09%	0.809%
55	18.615	2604	2608	2613	rVB2	38242	56002	2.06%	0.235%
56	18.679	2613	2619	2623	rBV3	144005	287832	10.61%	1.210%
57	18.973	2665	2669	2673	rBV	60857	85137	3.14%	0.358%
58	19.014	2673	2676	2684	rVB4	29866	60218	2.22%	0.253%
59	19.267	2716	2719	2723	rBV	33103	43402	1.60%	0.182%
60	19.384	2735	2739	2742	rBV	94530	151609	5.59%	0.637%
61	19.543	2760	2766	2769	rBV5	46799	98073	3.61%	0.412%
62	19.654	2779	2785	2790	rBV	788748	1136666	41.90%	4.779%
63	19.701	2790	2793	2796	rVV4	52441	64305	2.37%	0.270%
64	19.737	2796	2799	2805	rVB4	66494	98068	3.61%	0.412%
65	19.978	2835	2840	2842	rBV2	116187	185545	6.84%	0.780%
66	20.013	2842	2846	2854	rVV	703908	1064932	39.25%	4.477%
67	20.083	2854	2858	2863	rVB2	56506	83496	3.08%	0.351%
68	20.201	2873	2878	2883	rVB	2067074	2712982	100.00%	11.406%
69	20.330	2896	2900	2907	rVB3	48420	112725	4.16%	0.474%
70	20.501	2924	2929	2936	rVB	167668	277023	10.21%	1.165%
71	20.600	2942	2946	2950	rBV2	137351	167024	6.16%	0.702%
72	20.659	2953	2956	2960	rVB	77003	100348	3.70%	0.422%
73	20.800	2977	2980	2983	rBV	59659	70312	2.59%	0.296%
74	21.517	3099	3102	3107	rBV4	88539	134212	4.95%	0.564%
75	21.911	3161	3169	3174	rBV2	534402	1413499	52.10%	5.943%
76	21.964	3174	3178	3188	rVB	290185	523817	19.31%	2.202%

Data Path : Z:\svoasrv\HPCHEM1\BNA_G\Data\BG111622\
Data File : BG055655.D
Acq On : 16 Nov 2022 20:23
Operator : CG/JU
Sample : N5619-01
Misc :
ALS Vial : 16 Sample Multiplier: 1

Instrument :
BNA_G
ClientSampleId :
OR-02-111422

Integration Parameters: rteint.p
Integrator: RTE
Smoothing : ON Filtering: 5
Sampling : 1 Min Area: 3 % of largest Peak
Start Thrs: 0.2 Max Peaks: 100
Stop Thrs : 0 Peak Location: TOP

If leading or trailing edge < 100 prefer < Baseline drop else tangent >
Peak separation: 5

Method : Z:\svoasrv\HPCHEM1\BNA_G\Methods\8270-BG111622.M
Title : ASP BNA STANDARDS FOR 5 POINT CALIBRATION

77	24.237	3560	3565	3573	rBV2	146443	446189	16.45%	1.876%
78	25.336	3746	3752	3761	rVB2	213855	567730	20.93%	2.387%

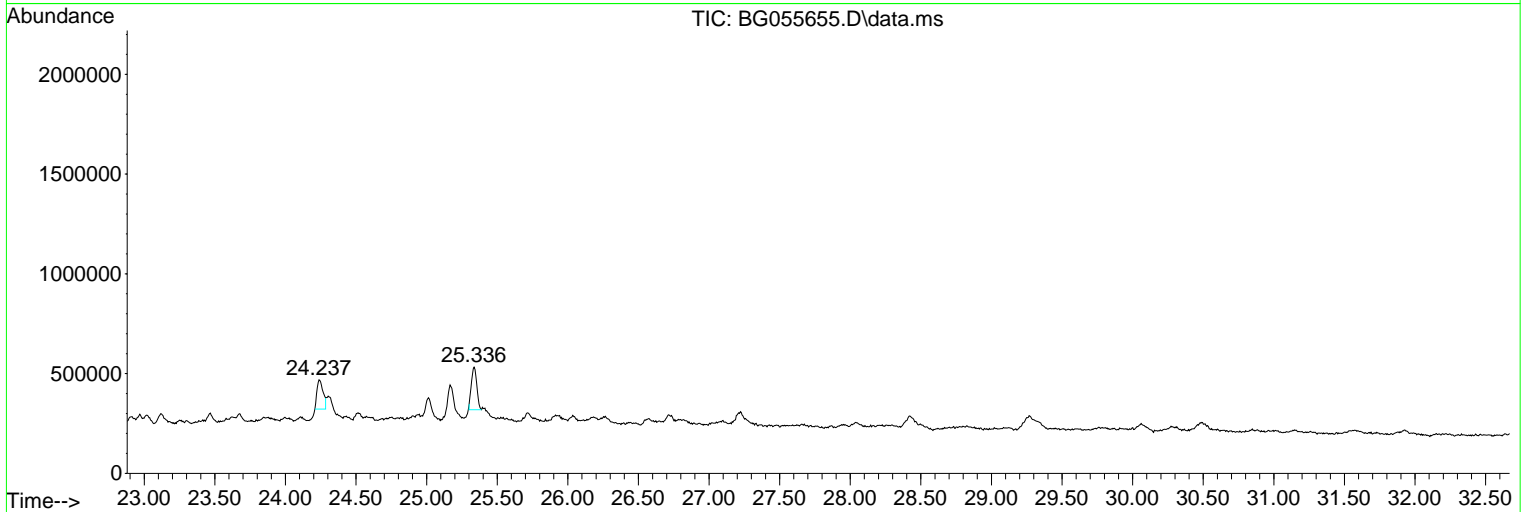
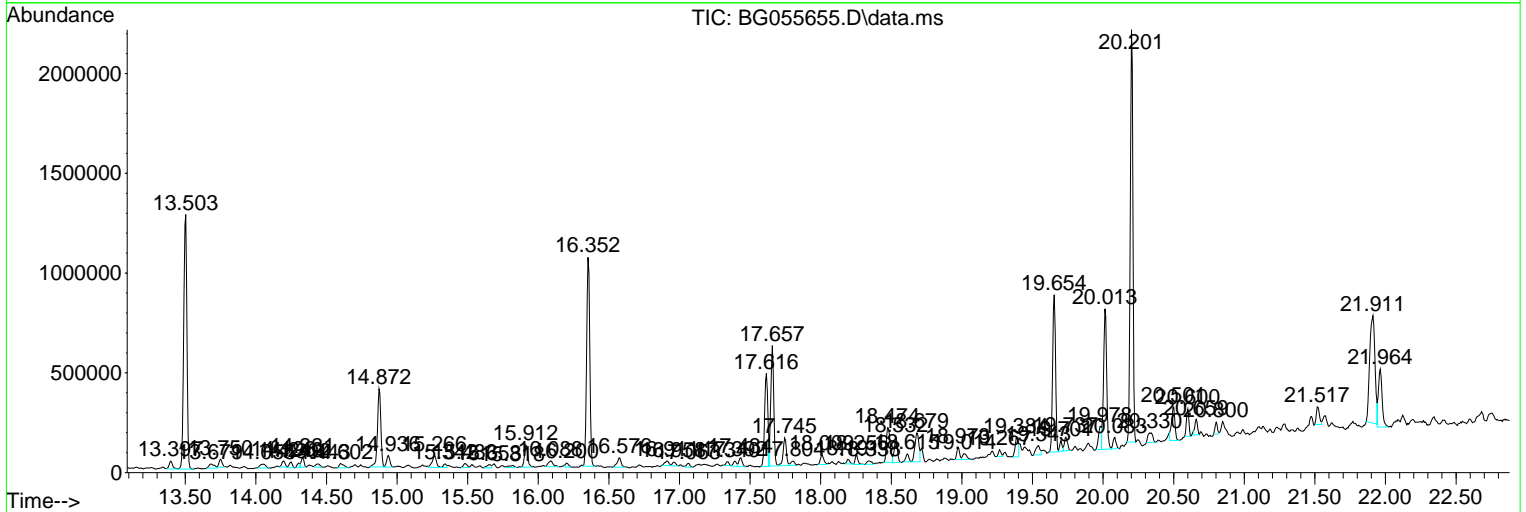
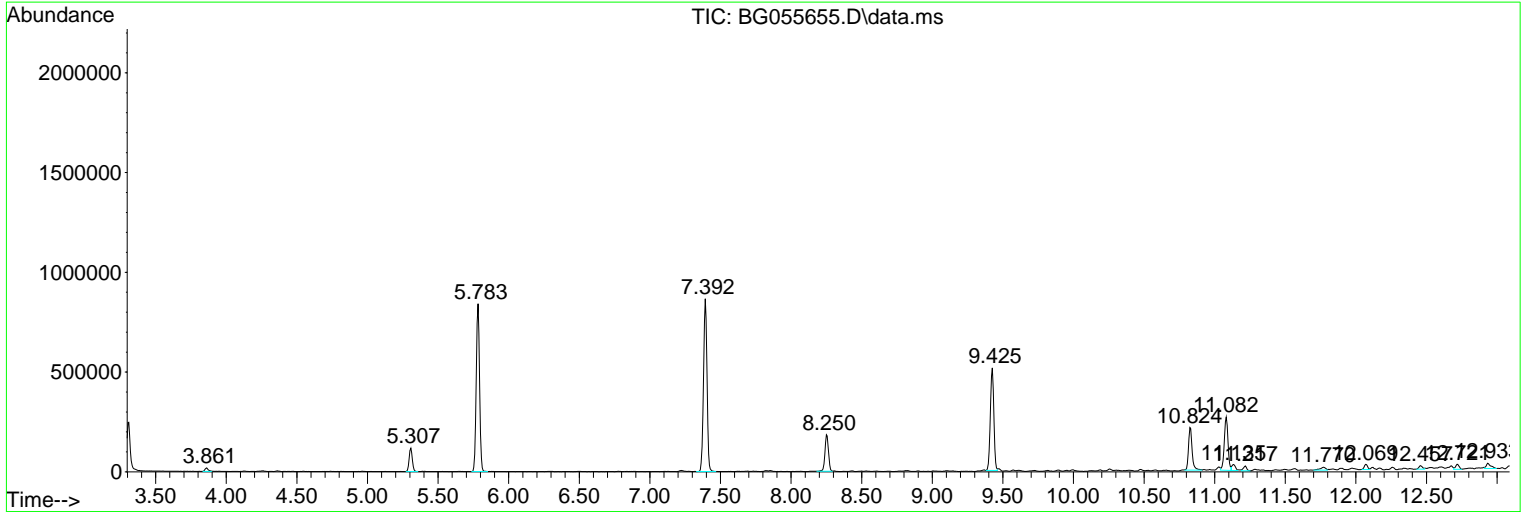
Sum of corrected areas: 23785102

Data Path : Z:\svoasrv\HPCHEM1\BNA_G\Data\BG111622\
 Data File : BG055655.D
 Acq On : 16 Nov 2022 20:23
 Operator : CG/JU
 Sample : N5619-01
 Misc :
 ALS Vial : 16 Sample Multiplier: 1

Instrument :
 BNA_G
ClientSampleId :
 OR-02-111422

Quant Method : Z:\svoasrv\HPCHEM1\BNA_G\Methods\8270-BG111622.M
 Quant Title : ASP BNA STANDARDS FOR 5 POINT CALIBRATION

TIC Library : C:\Database\NIST20.L
 TIC Integration Parameters: LSCINT.P



Data Path : Z:\svoasrv\HPCHEM1\BNA_G\Data\BG111622\
 Data File : BG055655.D
 Acq On : 16 Nov 2022 20:23
 Operator : CG/JU
 Sample : N5619-01
 Misc :
 ALS Vial : 16 Sample Multiplier: 1

Instrument :
 BNA_G
 ClientSampleId :
 OR-02-111422

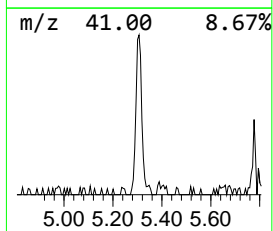
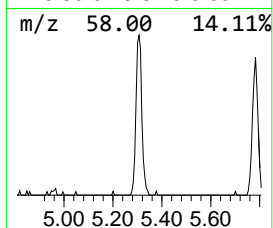
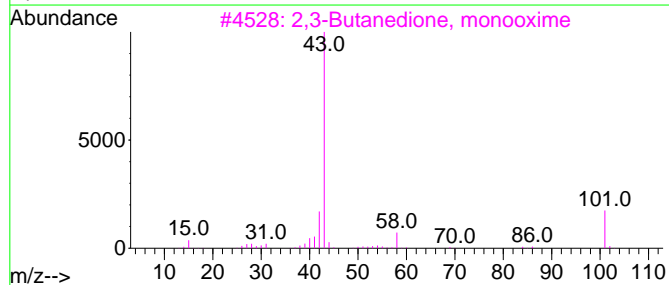
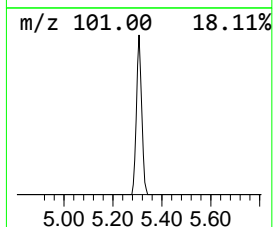
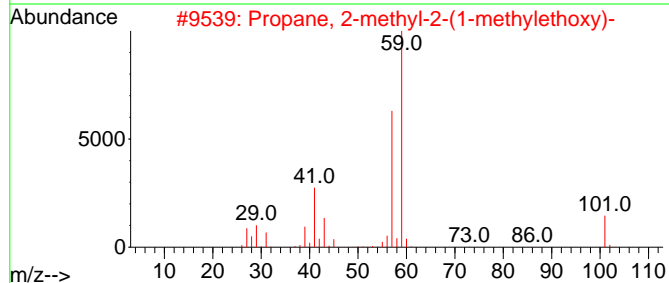
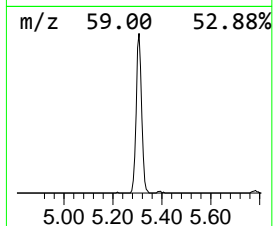
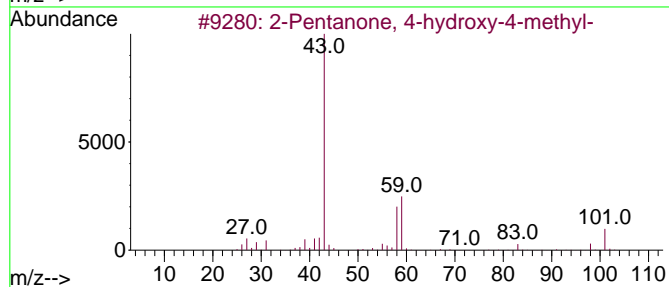
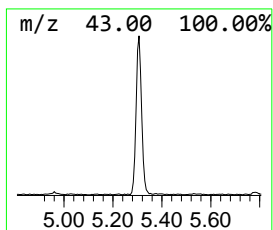
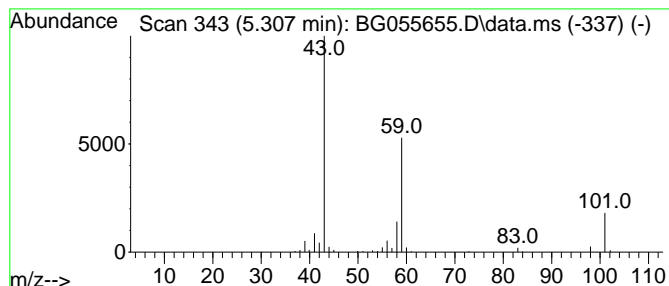
Quant Method : Z:\svoasrv\HPCHEM1\BNA_G\Methods\8270-BG111622.M
 Quant Title : ASP BNA STANDARDS FOR 5 POINT CALIBRATION

TIC Library : C:\Database\NIST20.L
 TIC Integration Parameters: LSCINT.P

 Peak Number 1 2-Pentanone, 4-hydroxy-4-me... Concentration Rank 2

R.T.	EstConc	Area	Relative to ISTD	R.T.
5.307	11.37 ng	181782	1,4-Dichlorobenzene-d4	8.250

Hit#	of 5	Tentative ID	MW	MolForm	CAS#	Qual
1		2-Pentanone, 4-hydroxy-4-methyl-	116	C6H12O2	000123-42-2	45
2		Propane, 2-methyl-2-(1-methyleth...	116	C7H16O	017348-59-3	33
3		2,3-Butanedione, monooxime	101	C4H7NO2	000057-71-6	27
4		Acetic acid, cyano-, 1,1-dimethy...	141	C7H11NO2	001116-98-9	25
5		1-Propen-2-ol, acetate	100	C5H8O2	000108-22-5	12



Data Path : Z:\svoasrv\HPCHEM1\BNA_G\Data\BG111622\
 Data File : BG055655.D
 Acq On : 16 Nov 2022 20:23
 Operator : CG/JU
 Sample : N5619-01
 Misc :
 ALS Vial : 16 Sample Multiplier: 1

Instrument :
 BNA_G
 ClientSampleId :
 OR-02-111422

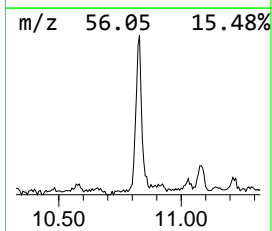
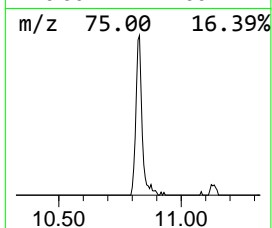
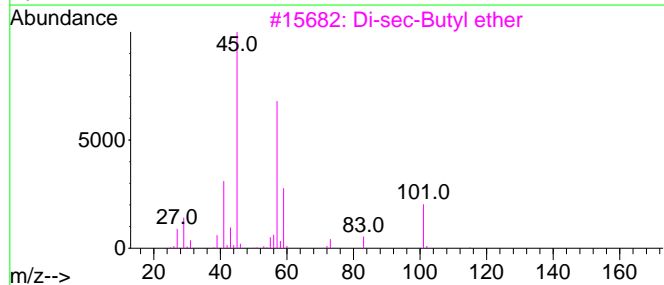
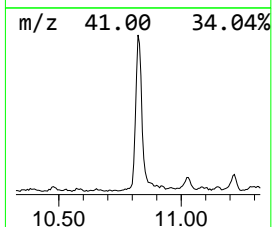
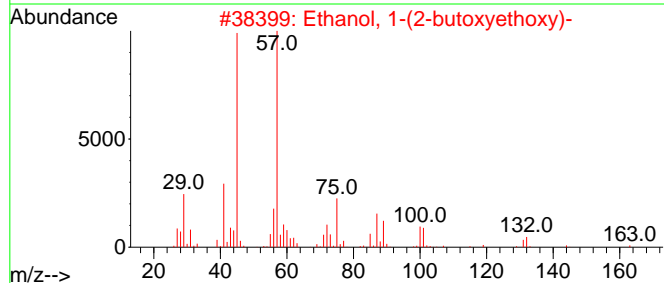
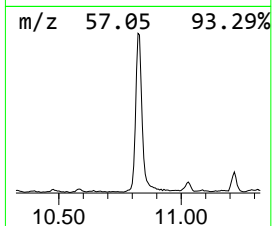
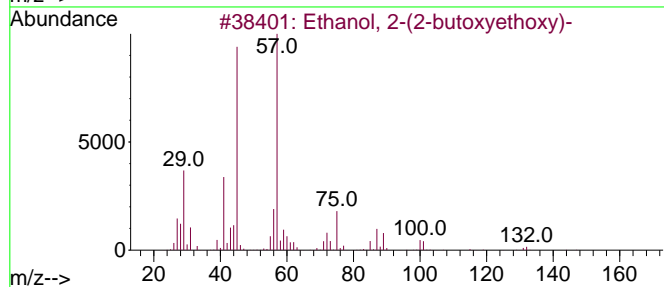
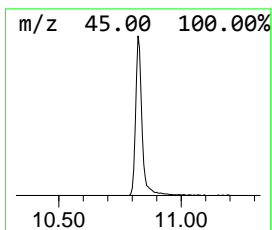
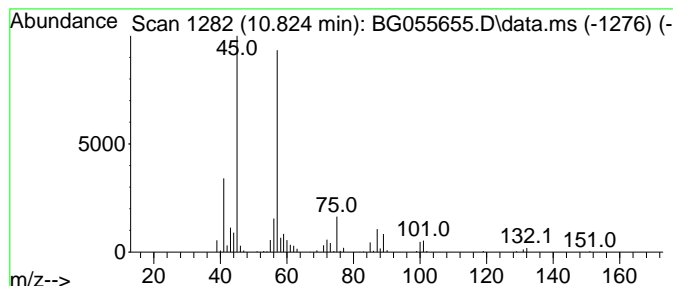
Quant Method : Z:\svoasrv\HPCHEM1\BNA_G\Methods\8270-BG111622.M
 Quant Title : ASP BNA STANDARDS FOR 5 POINT CALIBRATION

TIC Library : C:\Database\NIST20.L
 TIC Integration Parameters: LSCINT.P

 Peak Number 2 Ethanol, 2-(2-butoxyethoxy)- Concentration Rank 1

R.T.	EstConc	Area	Relative to ISTD	R.T.
10.824	15.36 ng	373969	Naphthalene-d8	11.082

Hit#	of	5	Tentative ID	MW	MolForm	CAS#	Qual
1			Ethanol, 2-(2-butoxyethoxy)-	162	C8H18O3	000112-34-5	90
2			Ethanol, 1-(2-butoxyethoxy)-	162	C8H18O3	054446-78-5	83
3			Di-sec-Butyl ether	130	C8H18O	006863-58-7	53
4			Methoxyacetic acid, 2-butyl ester	146	C7H14O3	070159-90-9	53
5			Butyl lactate	146	C7H14O3	000138-22-7	50



Data Path : Z:\svoasrv\HPCHEM1\BNA_G\Data\BG111622\
 Data File : BG055655.D
 Acq On : 16 Nov 2022 20:23
 Operator : CG/JU
 Sample : N5619-01
 Misc :
 ALS Vial : 16 Sample Multiplier: 1

Instrument :
 BNA_G
 ClientSampleId :
 OR-02-111422

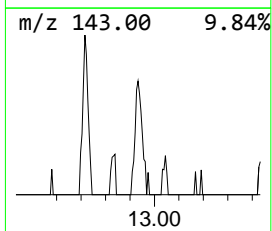
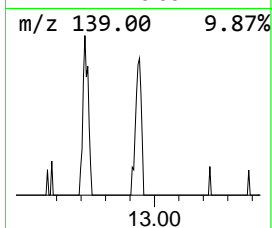
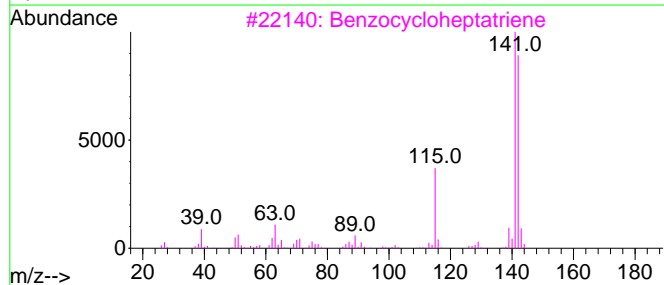
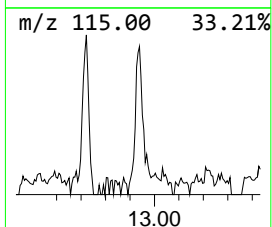
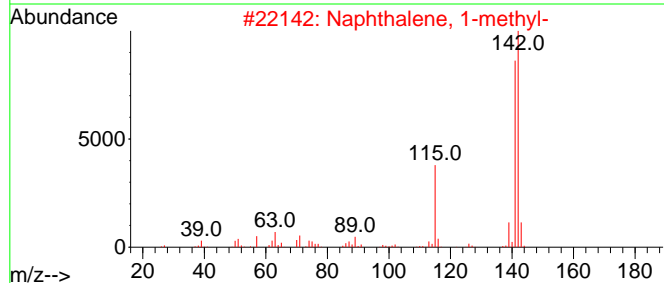
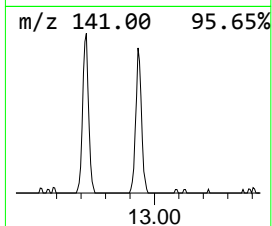
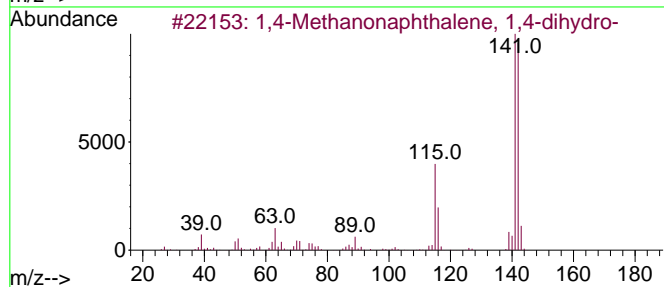
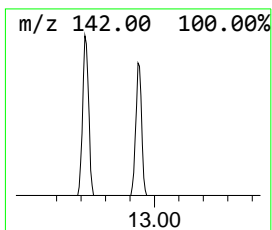
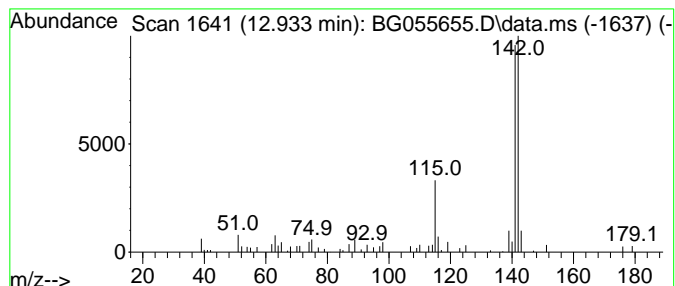
Quant Method : Z:\svoasrv\HPCHEM1\BNA_G\Methods\8270-BG111622.M
 Quant Title : ASP BNA STANDARDS FOR 5 POINT CALIBRATION

TIC Library : C:\Database\NIST20.L
 TIC Integration Parameters: LSCINT.P

 Peak Number 4 1,4-Methanonaphthalene, 1,4... Concentration Rank 11

R.T.	EstConc	Area	Relative to ISTD	R.T.
12.933	2.46 ng	59871	Naphthalene-d8	11.082

Hit#	of 5	Tentative ID	MW	MolForm	CAS#	Qual
1		1,4-Methanonaphthalene, 1,4-dihy...	142	C11H10	004453-90-1	93
2		Naphthalene, 1-methyl-	142	C11H10	000090-12-0	91
3		Benzocycloheptatriene	142	C11H10	000264-09-5	91
4		Naphthalene, 2-methyl-	142	C11H10	000091-57-6	91
5		1H-Indene, 1-ethylidene-	142	C11H10	002471-83-2	87



Data Path : Z:\svoasrv\HPCHEM1\BNA_G\Data\BG111622\
 Data File : BG055655.D
 Acq On : 16 Nov 2022 20:23
 Operator : CG/JU
 Sample : N5619-01
 Misc :
 ALS Vial : 16 Sample Multiplier: 1

Instrument :
 BNA_G
 ClientSampleId :
 OR-02-111422

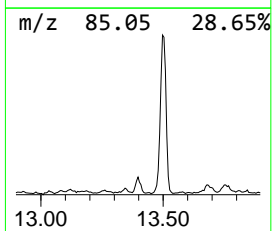
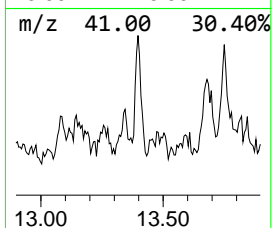
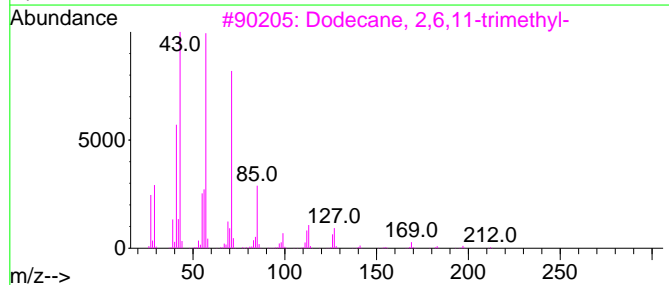
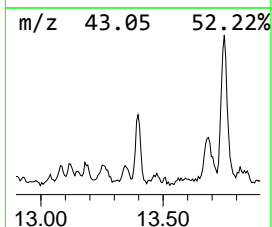
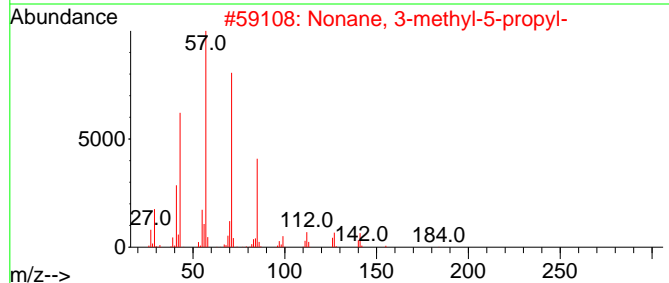
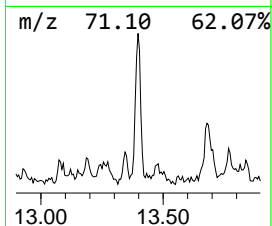
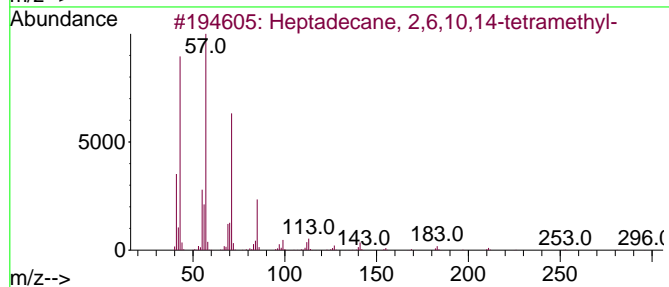
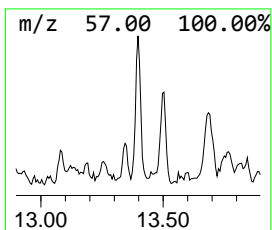
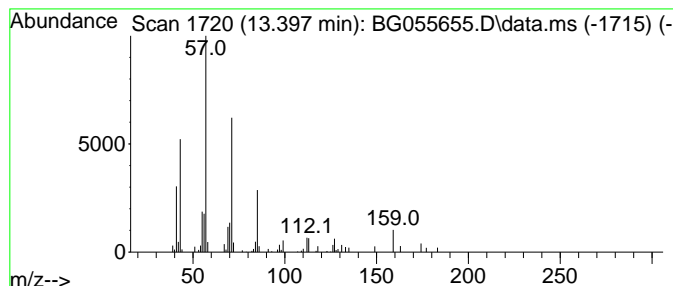
Quant Method : Z:\svoasrv\HPCHEM1\BNA_G\Methods\8270-BG111622.M
 Quant Title : ASP BNA STANDARDS FOR 5 POINT CALIBRATION

TIC Library : C:\Database\NIST20.L
 TIC Integration Parameters: LSCINT.P

 Peak Number 5 Heptadecane, 2,6,10,14-tetr... Concentration Rank 16

R.T.	EstConc	Area	Relative to ISTD	R.T.
13.397	2.02 ng	66171	Acenaphthene-d10	14.872

Hit#	of	5	Tentative ID	MW	MolForm	CAS#	Qual
1			Heptadecane, 2,6,10,14-tetramethyl-	296	C21H44	018344-37-1	80
2			Nonane, 3-methyl-5-propyl-	184	C13H28	031081-18-2	72
3			Dodecane, 2,6,11-trimethyl-	212	C15H32	031295-56-4	64
4			Tetracosane	338	C24H50	000646-31-1	64
5			Sulfurous acid, butyl nonyl ester	264	C13H28O3S	1000309-17-6	64



Data Path : Z:\svoasrv\HPCHEM1\BNA_G\Data\BG111622\
 Data File : BG055655.D
 Acq On : 16 Nov 2022 20:23
 Operator : CG/JU
 Sample : N5619-01
 Misc :
 ALS Vial : 16 Sample Multiplier: 1

Instrument :
 BNA_G
 ClientSampleId :
 OR-02-111422

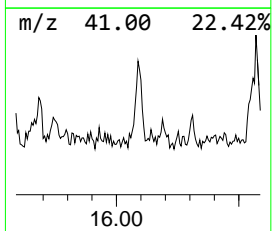
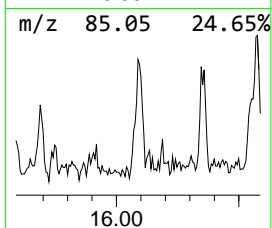
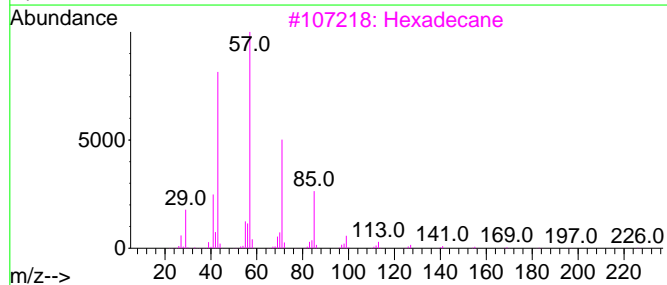
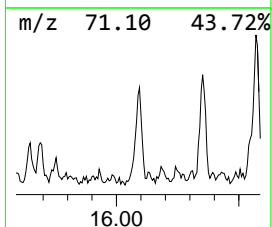
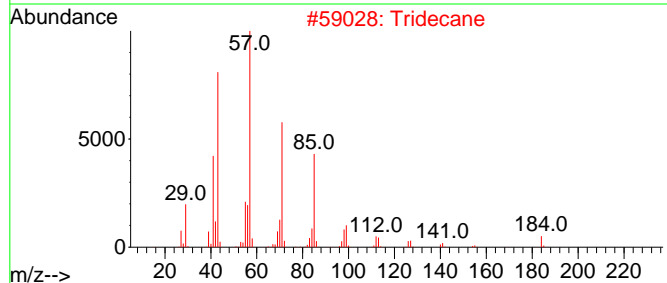
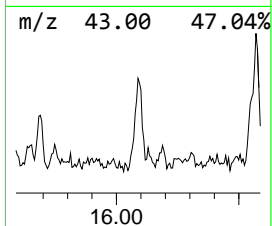
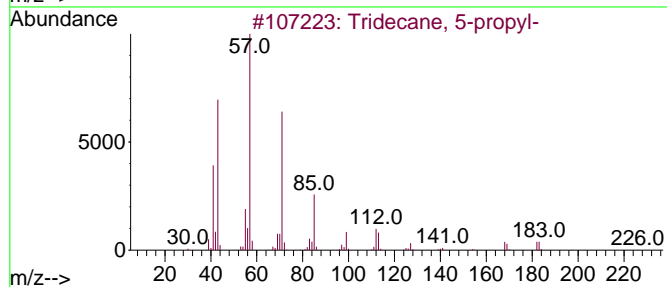
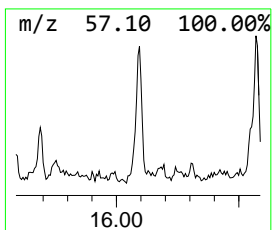
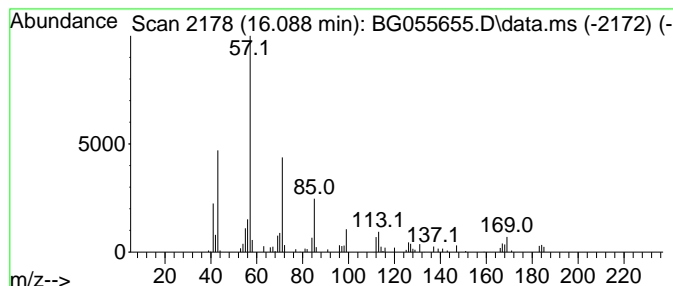
Quant Method : Z:\svoasrv\HPCHEM1\BNA_G\Methods\8270-BG111622.M
 Quant Title : ASP BNA STANDARDS FOR 5 POINT CALIBRATION

TIC Library : C:\Database\NIST20.L
 TIC Integration Parameters: LSCINT.P

 Peak Number 6 Tridecane, 5-propyl- Concentration Rank 14

R.T.	EstConc	Area	Relative to ISTD	R.T.
16.088	2.20 ng	72124	Acenaphthene-d10	14.872

Hit#	of 5	Tentative ID	MW	MolForm	CAS#	Qual
1		Tridecane, 5-propyl-	226	C16H34	055045-11-9	80
2		Tridecane	184	C13H28	000629-50-5	70
3		Hexadecane	226	C16H34	000544-76-3	59
4		Dodecane, 2,6,11-trimethyl-	212	C15H32	031295-56-4	53
5		Tetracosane	338	C24H50	000646-31-1	53



Data Path : Z:\svoasrv\HPCHEM1\BNA_G\Data\BG111622\
 Data File : BG055655.D
 Acq On : 16 Nov 2022 20:23
 Operator : CG/JU
 Sample : N5619-01
 Misc :
 ALS Vial : 16 Sample Multiplier: 1

Instrument :
 BNA_G
 ClientSampleId :
 OR-02-111422

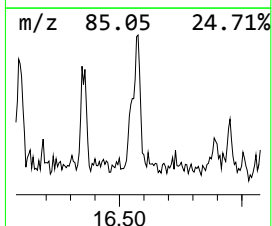
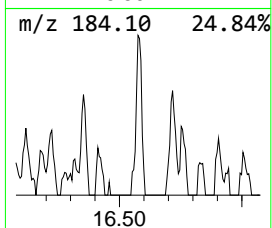
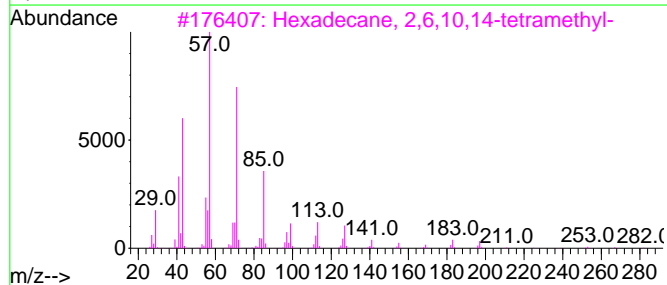
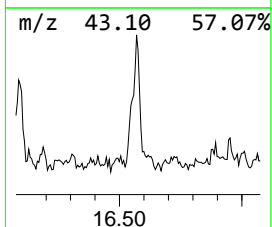
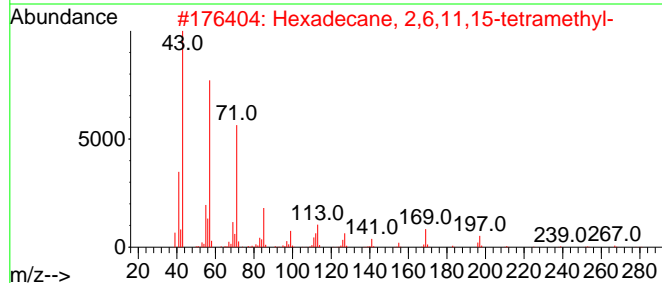
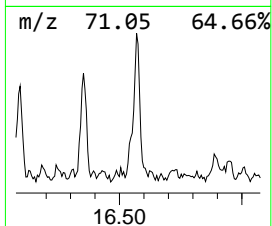
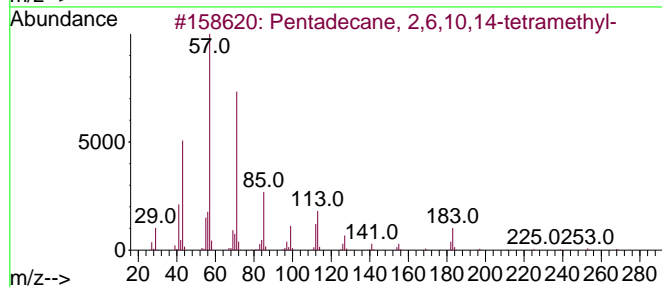
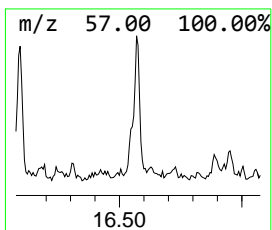
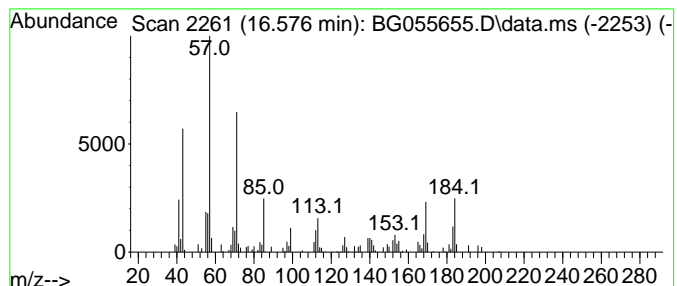
Quant Method : Z:\svoasrv\HPCHEM1\BNA_G\Methods\8270-BG111622.M
 Quant Title : ASP BNA STANDARDS FOR 5 POINT CALIBRATION

TIC Library : C:\Database\NIST20.L
 TIC Integration Parameters: LSCINT.P

 Peak Number 7 Pentadecane, 2,6,10,14-tetr... Concentration Rank 10

R.T.	EstConc	Area	Relative to ISTD	R.T.
16.576	2.48 ng	92589	Phenanthrene-d10	17.616

Hit#	of 5	Tentative ID	MW	MolForm	CAS#	Qual
1		Pentadecane, 2,6,10,14-tetramethyl-	268	C19H40	001921-70-6	68
2		Hexadecane, 2,6,11,15-tetramethyl-	282	C20H42	000504-44-9	58
3		Hexadecane, 2,6,10,14-tetramethyl-	282	C20H42	000638-36-8	49
4		Sulfurous acid, decyl 2-ethylhex...	334	C18H38O3S	1000309-19-3	49
5		Sulfurous acid, 2-ethylhexyl und...	348	C19H40O3S	1000309-19-4	49



Data Path : Z:\svoasrv\HPCHEM1\BNA_G\Data\BG111622\
 Data File : BG055655.D
 Acq On : 16 Nov 2022 20:23
 Operator : CG/JU
 Sample : N5619-01
 Misc :
 ALS Vial : 16 Sample Multiplier: 1

Instrument :
 BNA_G
 ClientSampleId :
 OR-02-111422

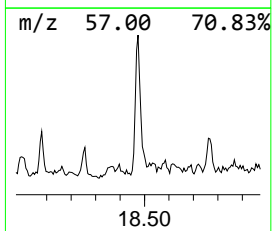
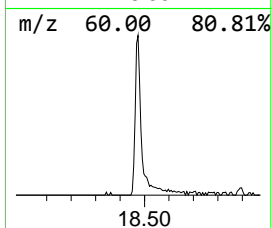
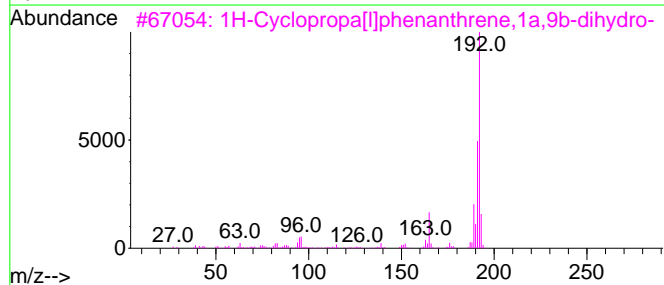
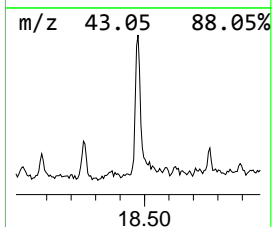
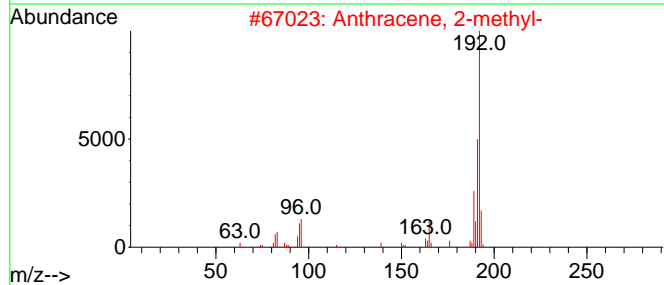
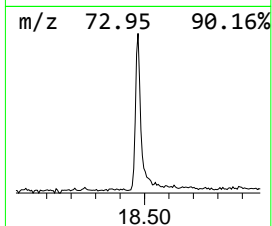
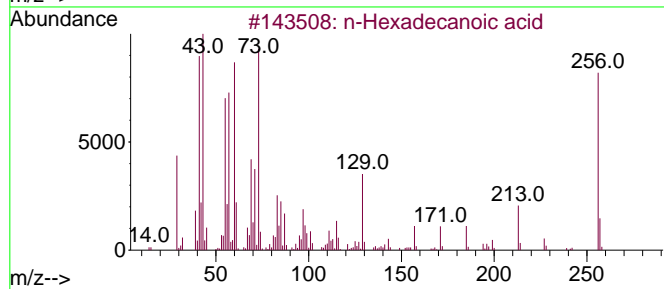
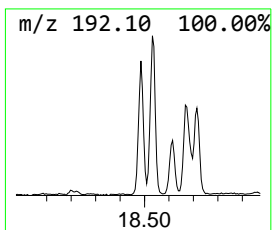
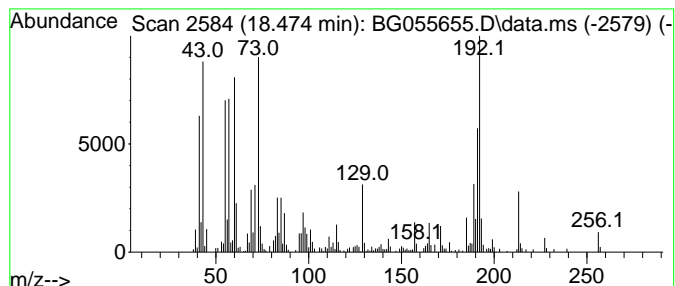
Quant Method : Z:\svoasrv\HPCHEM1\BNA_G\Methods\8270-BG111622.M
 Quant Title : ASP BNA STANDARDS FOR 5 POINT CALIBRATION

TIC Library : C:\Database\NIST20.L
 TIC Integration Parameters: LSCINT.P

 Peak Number 9 n-Hexadecanoic acid Concentration Rank 3

R.T.	EstConc	Area	Relative to ISTD	R.T.
18.474	8.83 ng	329889	Phenanthrene-d10	17.616

Hit#	of 5	Tentative ID	MW	MolForm	CAS#	Qual
1		n-Hexadecanoic acid	256	C16H32O2	000057-10-3	96
2		Anthracene, 2-methyl-	192	C15H12	000613-12-7	64
3		1H-Cyclopropa[1]phenanthrene,1a,...	192	C15H12	000949-41-7	52
4		Phenanthrene, 2-methyl-	192	C15H12	002531-84-2	52
5		Phenanthrene, 1-methyl-	192	C15H12	000832-69-9	52



Data Path : Z:\svoasrv\HPCHEM1\BNA_G\Data\BG111622\
 Data File : BG055655.D
 Acq On : 16 Nov 2022 20:23
 Operator : CG/JU
 Sample : N5619-01
 Misc :
 ALS Vial : 16 Sample Multiplier: 1

Instrument :
 BNA_G
 ClientSampleId :
 OR-02-111422

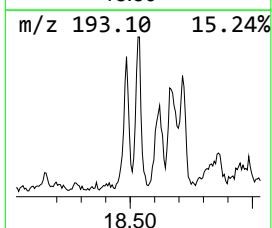
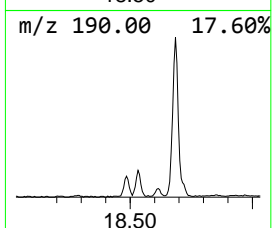
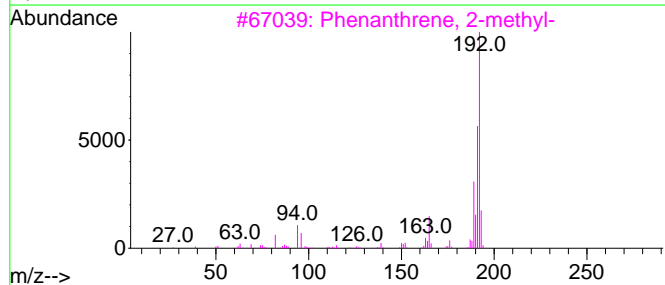
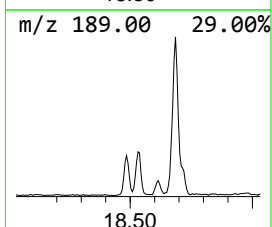
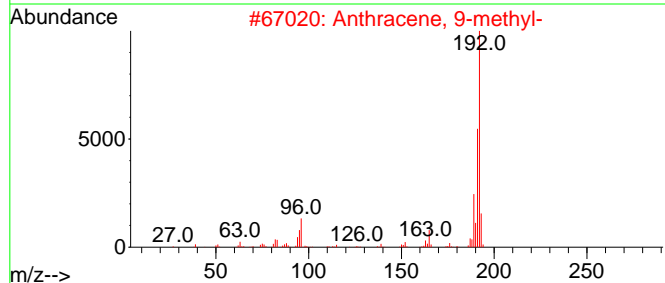
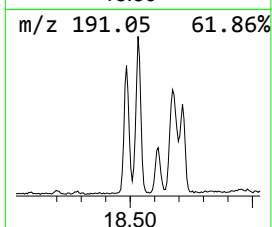
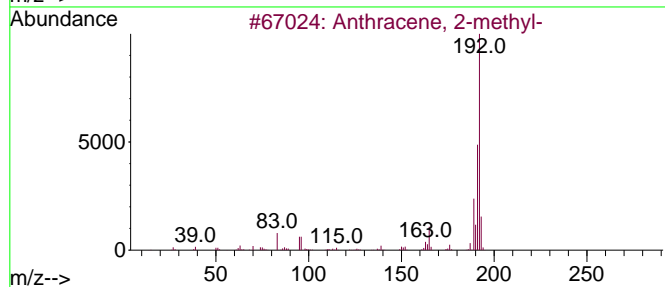
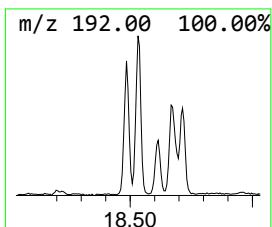
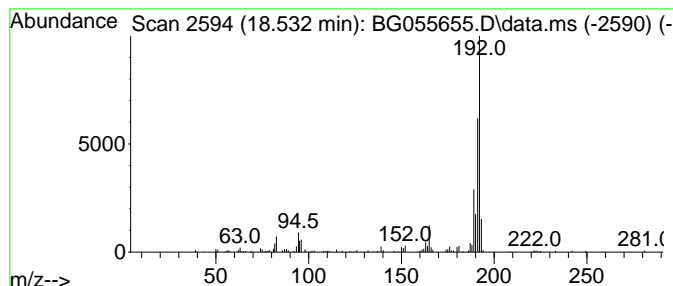
Quant Method : Z:\svoasrv\HPCHEM1\BNA_G\Methods\8270-BG111622.M
 Quant Title : ASP BNA STANDARDS FOR 5 POINT CALIBRATION

TIC Library : C:\Database\NIST20.L
 TIC Integration Parameters: LSCINT.P

 Peak Number 10 Anthracene, 2-methyl- Concentration Rank 5

R.T.	EstConc	Area	Relative to ISTD	R.T.
18.532	5.15 ng	192371	Phenanthrene-d10	17.616

Hit#	of 5	Tentative ID	MW	MolForm	CAS#	Qual
1		Anthracene, 2-methyl-	192	C15H12	000613-12-7	95
2		Anthracene, 9-methyl-	192	C15H12	000779-02-2	93
3		Phenanthrene, 2-methyl-	192	C15H12	002531-84-2	93
4		Phenanthrene, 1-methyl-	192	C15H12	000832-69-9	93
5		Anthracene, 1-methyl-	192	C15H12	000610-48-0	91



Data Path : Z:\svoasrv\HPCHEM1\BNA_G\Data\BG111622\
 Data File : BG055655.D
 Acq On : 16 Nov 2022 20:23
 Operator : CG/JU
 Sample : N5619-01
 Misc :
 ALS Vial : 16 Sample Multiplier: 1

Instrument :
 BNA_G
 ClientSampleId :
 OR-02-111422

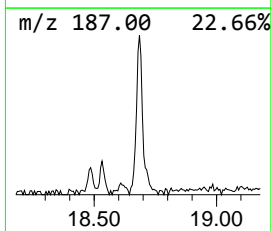
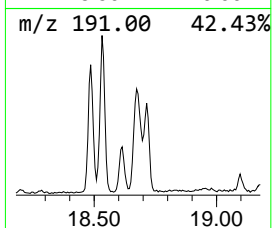
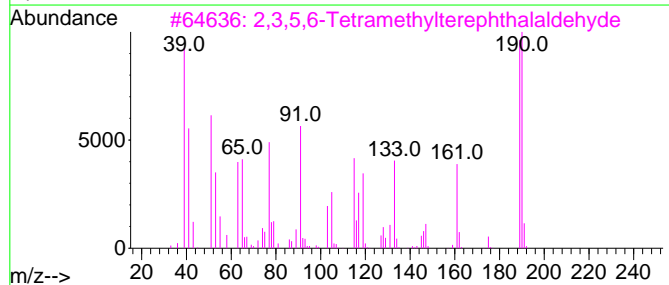
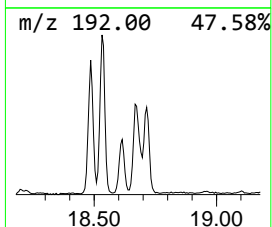
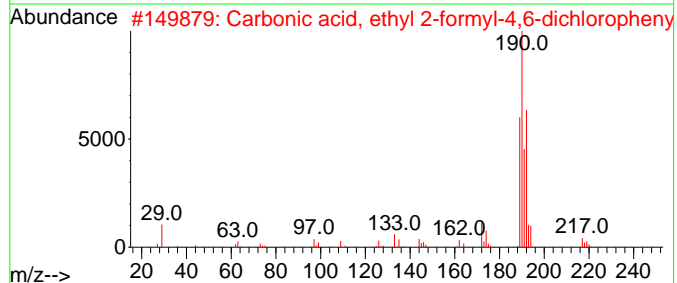
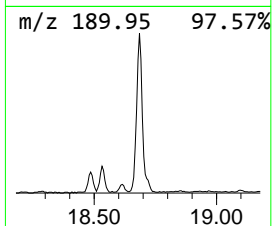
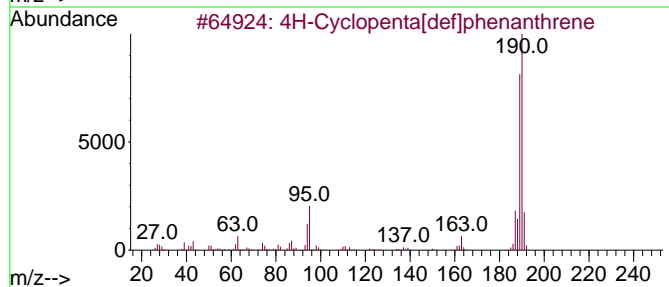
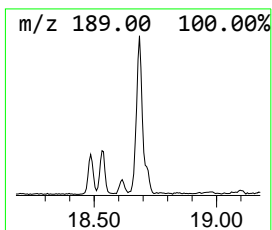
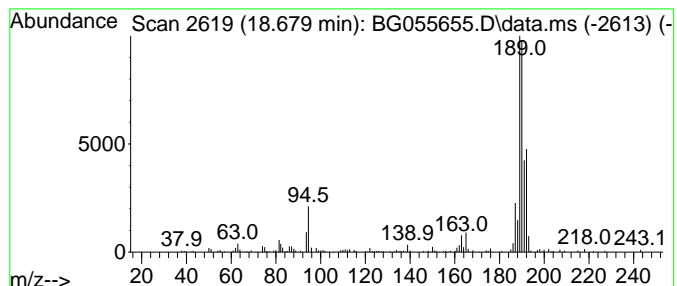
Quant Method : Z:\svoasrv\HPCHEM1\BNA_G\Methods\8270-BG111622.M
 Quant Title : ASP BNA STANDARDS FOR 5 POINT CALIBRATION

TIC Library : C:\Database\NIST20.L
 TIC Integration Parameters: LSCINT.P

 Peak Number 11 4H-Cyclopenta[def]phenanthrene Concentration Rank 4

R.T.	EstConc	Area	Relative to ISTD	R.T.
18.679	7.70 ng	287832	Phenanthrene-d10	17.616

Hit#	of 5	Tentative ID	MW	MolForm	CAS#	Qual
1		4H-Cyclopenta[def]phenanthrene	190	C15H10	000203-64-5	64
2		Carbonic acid, ethyl 2-formyl-4,...	262	C10H8Cl2O4	1000331-34-4	50
3		2,3,5,6-Tetramethylterephthalald...	190	C12H14O2	007072-01-7	43
4		2,2'-Bis(4,5-dimethylimidazole)	190	C10H14N4	069286-06-2	40
5		6H-Cyclobuta[jk]phenanthrene	190	C15H10	083469-43-6	40



Data Path : Z:\svoasrv\HPCHEM1\BNA_G\Data\BG111622\
 Data File : BG055655.D
 Acq On : 16 Nov 2022 20:23
 Operator : CG/JU
 Sample : N5619-01
 Misc :
 ALS Vial : 16 Sample Multiplier: 1

Instrument :
 BNA_G
 ClientSampleId :
 OR-02-111422

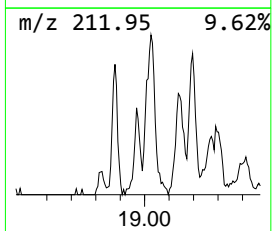
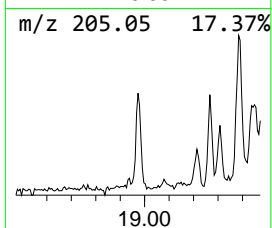
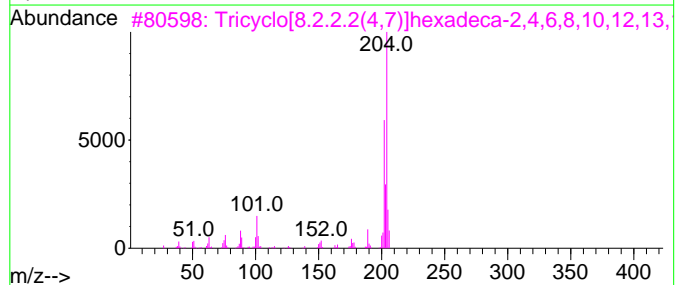
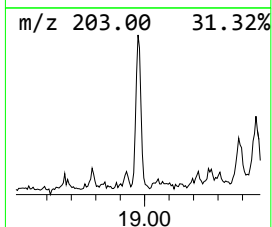
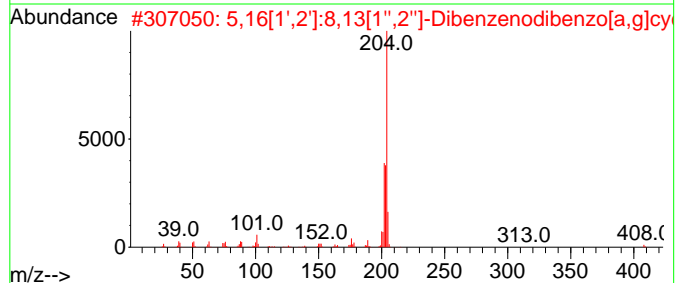
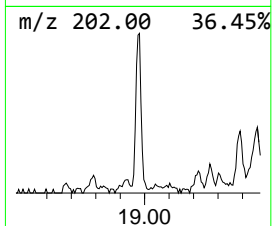
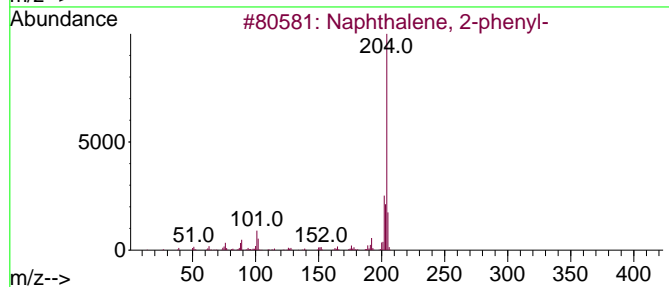
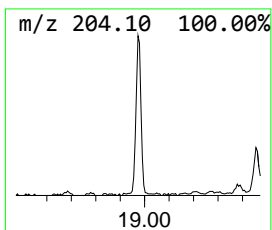
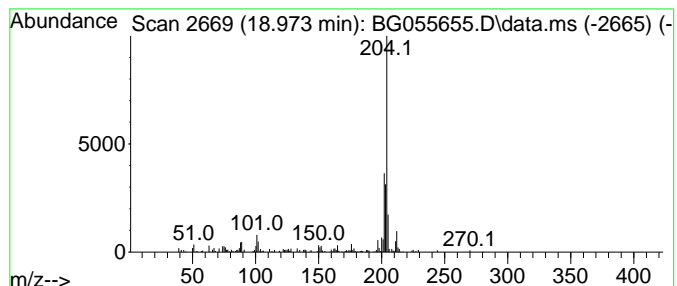
Quant Method : Z:\svoasrv\HPCHEM1\BNA_G\Methods\8270-BG111622.M
 Quant Title : ASP BNA STANDARDS FOR 5 POINT CALIBRATION

TIC Library : C:\Database\NIST20.L
 TIC Integration Parameters: LSCINT.P

 Peak Number 12 Naphthalene, 2-phenyl- Concentration Rank 13

R.T.	EstConc	Area	Relative to ISTD	R.T.
18.973	2.28 ng	85137	Phenanthrene-d10	17.616

Hit#	of 5	Tentative ID	MW	MolForm	CAS#	Qual
1		Naphthalene, 2-phenyl-	204	C16H12	000612-94-2	91
2		5,16[1',2']:8,13[1'',2'']-Dibenz...	408	C32H24	005672-97-9	80
3		Tricyclo[8.2.2.2(4,7)]hexadeca-2...	204	C16H12	006572-60-7	70
4		Naphthalene, 1-phenyl-	204	C16H12	000605-02-7	60
5		Pyrazol-5-ol, 3-(3,4-methylenedi...	204	C10H8N2O3	1000271-76-1	53



Data Path : Z:\svoasrv\HPCHEM1\BNA_G\Data\BG111622\
 Data File : BG055655.D
 Acq On : 16 Nov 2022 20:23
 Operator : CG/JU
 Sample : N5619-01
 Misc :
 ALS Vial : 16 Sample Multiplier: 1

Instrument :
 BNA_G
 ClientSampleId :
 OR-02-111422

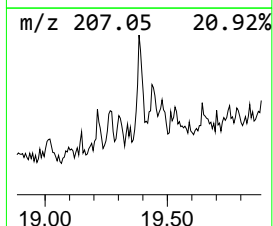
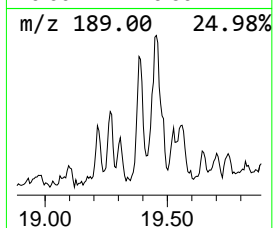
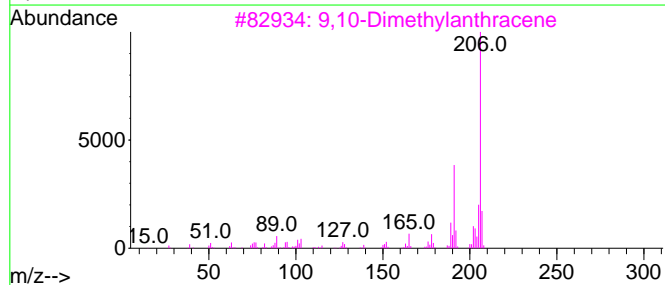
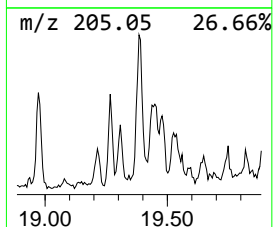
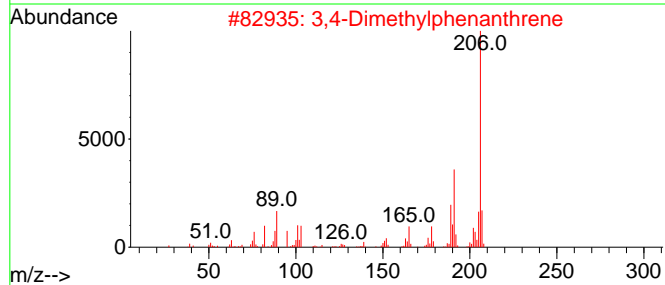
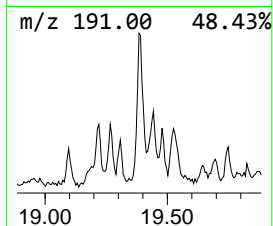
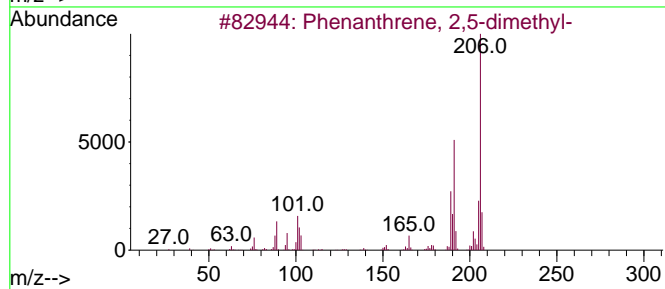
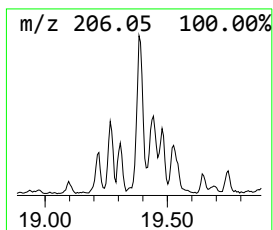
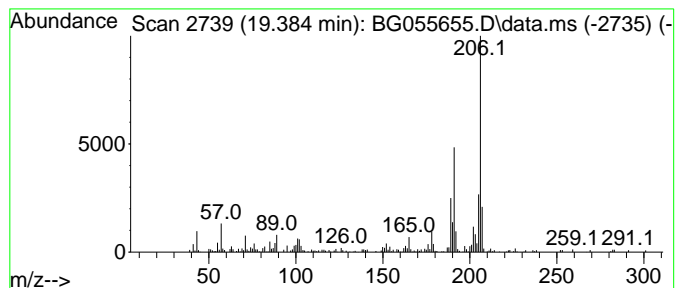
Quant Method : Z:\svoasrv\HPCHEM1\BNA_G\Methods\8270-BG111622.M
 Quant Title : ASP BNA STANDARDS FOR 5 POINT CALIBRATION

TIC Library : C:\Database\NIST20.L
 TIC Integration Parameters: LSCINT.P

 Peak Number 13 Phenanthrene, 2,5-dimethyl- Concentration Rank 6

R.T.	EstConc	Area	Relative to ISTD	R.T.
19.384	4.06 ng	151609	Phenanthrene-d10	17.616

Hit#	of 5	Tentative ID	MW	MolForm	CAS#	Qual
1		Phenanthrene, 2,5-dimethyl-	206	C16H14	003674-66-6	94
2		3,4-Dimethylphenanthrene	206	C16H14	1000452-24-5	93
3		9,10-Dimethylanthracene	206	C16H14	000781-43-1	91
4		di-p-Tolylacetylene	206	C16H14	002789-88-0	90
5		Naphthalene, 1,2-dihydro-4-phenyl-	206	C16H14	007469-40-1	90



Data Path : Z:\svoasrv\HPCHEM1\BNA_G\Data\BG111622\
 Data File : BG055655.D
 Acq On : 16 Nov 2022 20:23
 Operator : CG/JU
 Sample : N5619-01
 Misc :
 ALS Vial : 16 Sample Multiplier: 1

Instrument :
 BNA_G
 ClientSampleId :
 OR-02-111422

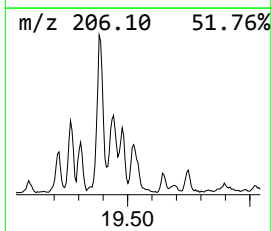
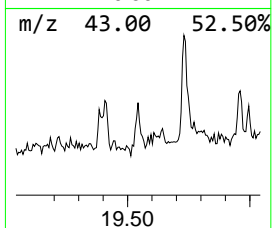
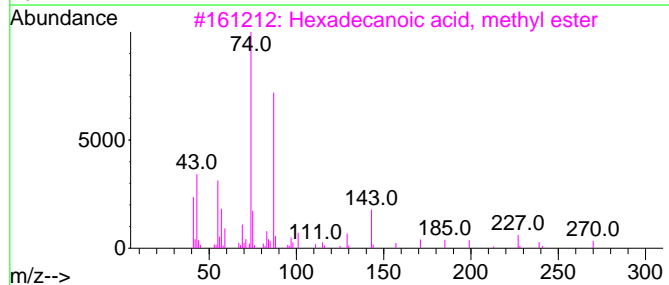
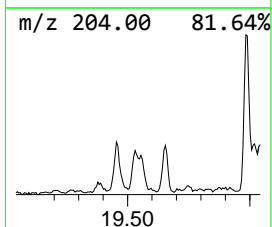
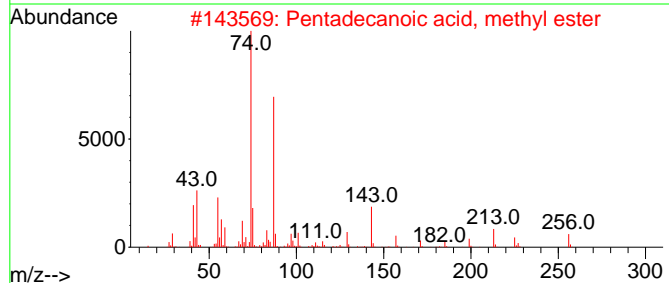
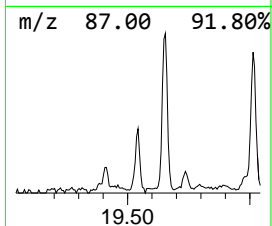
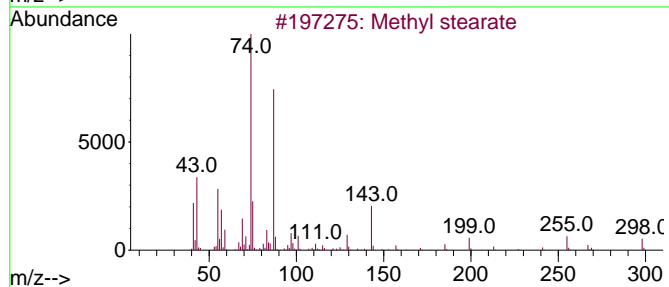
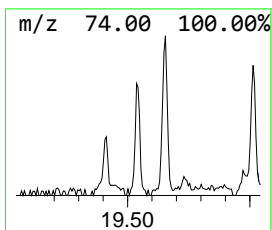
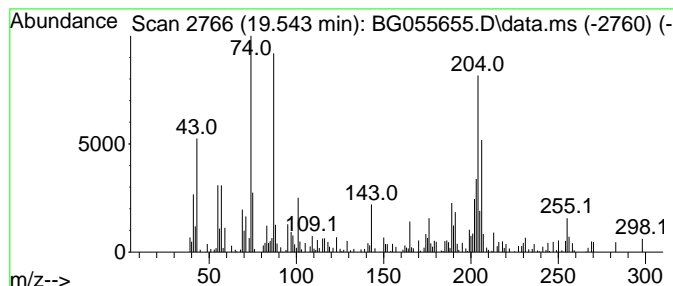
Quant Method : Z:\svoasrv\HPCHEM1\BNA_G\Methods\8270-BG111622.M
 Quant Title : ASP BNA STANDARDS FOR 5 POINT CALIBRATION

TIC Library : C:\Database\NIST20.L
 TIC Integration Parameters: LSCINT.P

 Peak Number 14 Methyl stearate Concentration Rank 8

R.T.	EstConc	Area	Relative to ISTD	R.T.
19.543	2.62 ng	98073	Phenanthrene-d10	17.616

Hit#	of 5	Tentative ID	MW	MolForm	CAS#	Qual
1		Methyl stearate	298	C19H38O2	000112-61-8	66
2		Pentadecanoic acid, methyl ester	256	C16H32O2	007132-64-1	46
3		Hexadecanoic acid, methyl ester	270	C17H34O2	000112-39-0	41
4		Tricyclo[8.2.2.2(4,7)]hexadeca-2...	204	C16H12	006572-60-7	38
5		Cyclopenta(def)phenanthrenone	204	C15H8O	005737-13-3	35



Data Path : Z:\svoasrv\HPCHEM1\BNA_G\Data\BG111622\
 Data File : BG055655.D
 Acq On : 16 Nov 2022 20:23
 Operator : CG/JU
 Sample : N5619-01
 Misc :
 ALS Vial : 16 Sample Multiplier: 1

Instrument :
 BNA_G
 ClientSampleId :
 OR-02-111422

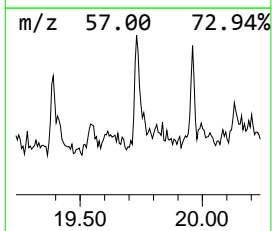
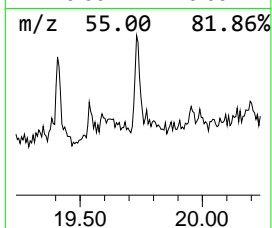
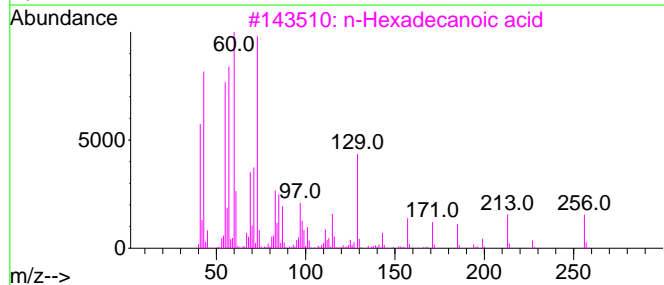
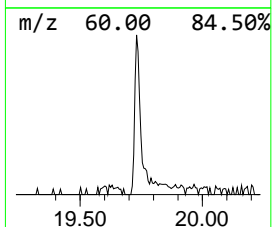
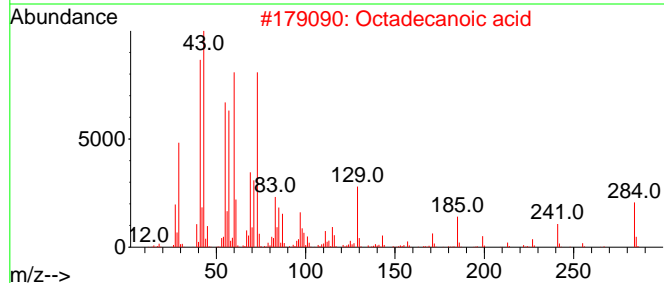
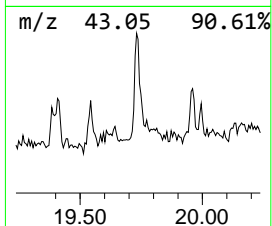
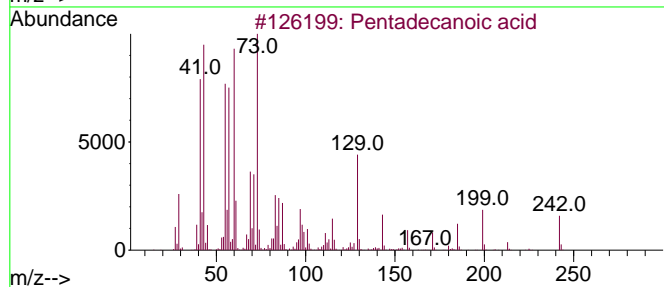
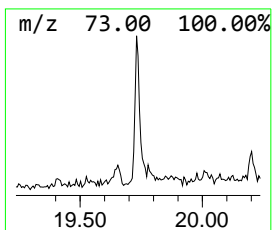
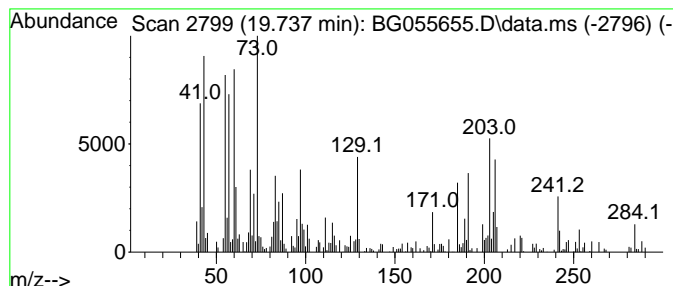
Quant Method : Z:\svoasrv\HPCHEM1\BNA_G\Methods\8270-BG111622.M
 Quant Title : ASP BNA STANDARDS FOR 5 POINT CALIBRATION

TIC Library : C:\Database\NIST20.L
 TIC Integration Parameters: LSCINT.P

 Peak Number 15 Pentadecanoic acid Concentration Rank 9

R.T.	EstConc	Area	Relative to ISTD	R.T.
19.737	2.62 ng	98068	Phenanthrene-d10	17.616

Hit#	of 5	Tentative ID	MW	MolForm	CAS#	Qual
1		Pentadecanoic acid	242	C15H30O2	001002-84-2	83
2		Octadecanoic acid	284	C18H36O2	000057-11-4	78
3		n-Hexadecanoic acid	256	C16H32O2	000057-10-3	64
4		Tetradecanoic acid	228	C14H28O2	000544-63-8	38
5		n-Decanoic acid	172	C10H20O2	000334-48-5	38



Data Path : Z:\svoasrv\HPCHEM1\BNA_G\Data\BG111622\
 Data File : BG055655.D
 Acq On : 16 Nov 2022 20:23
 Operator : CG/JU
 Sample : N5619-01
 Misc :
 ALS Vial : 16 Sample Multiplier: 1

Instrument :
 BNA_G
 ClientSampleId :
 OR-02-111422

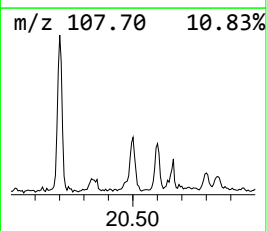
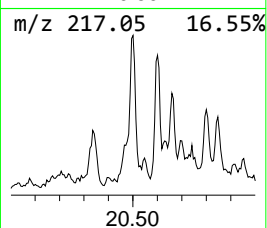
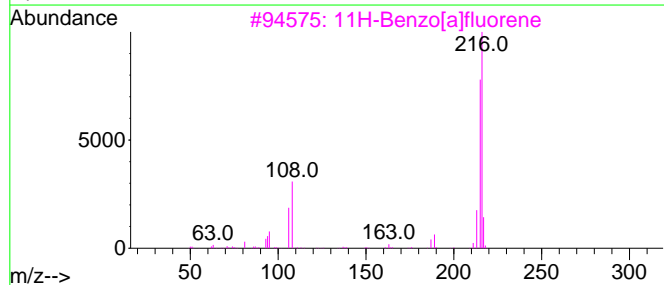
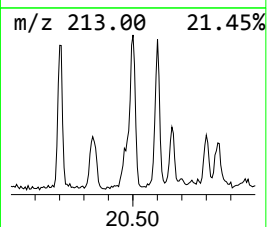
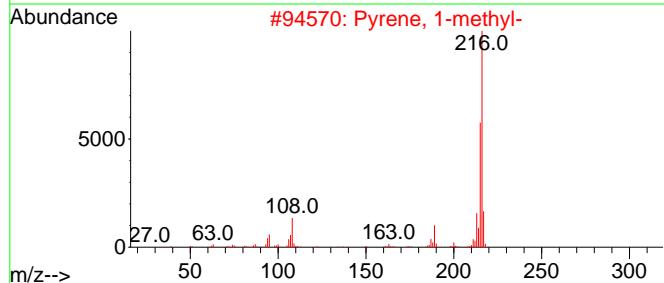
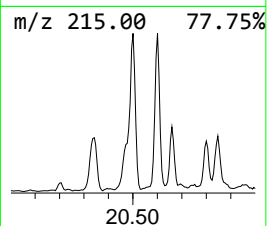
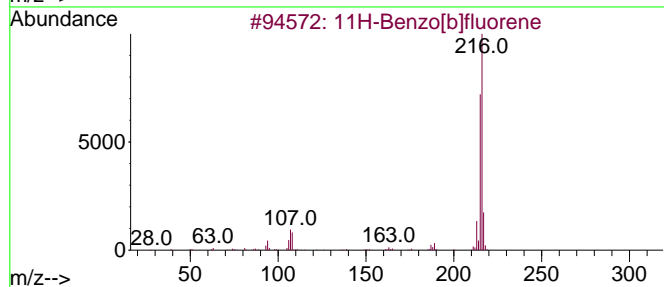
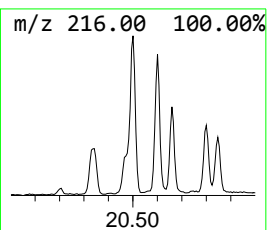
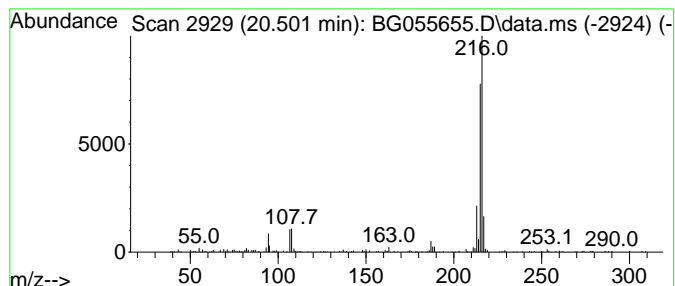
Quant Method : Z:\svoasrv\HPCHEM1\BNA_G\Methods\8270-BG111622.M
 Quant Title : ASP BNA STANDARDS FOR 5 POINT CALIBRATION

TIC Library : C:\Database\NIST20.L
 TIC Integration Parameters: LSCINT.P

 Peak Number 16 11H-Benzo[b]fluorene Concentration Rank 7

R.T.	EstConc	Area	Relative to ISTD	R.T.
20.500	3.92 ng	277023	Chrysene-d12	21.916

Hit#	of 5	Tentative ID	MW	MolForm	CAS#	Qual
1		11H-Benzo[b]fluorene	216	C17H12	000243-17-4	94
2		Pyrene, 1-methyl-	216	C17H12	002381-21-7	90
3		11H-Benzo[a]fluorene	216	C17H12	000238-84-6	87
4		Fluoranthene, 2-methyl-	216	C17H12	033543-31-6	80
5		Pyrene, 4-methyl-	216	C17H12	003353-12-6	60



Data Path : Z:\svoasrv\HPCHEM1\BNA_G\Data\BG111622\
 Data File : BG055655.D
 Acq On : 16 Nov 2022 20:23
 Operator : CG/JU
 Sample : N5619-01
 Misc :
 ALS Vial : 16 Sample Multiplier: 1

Instrument :
 BNA_G
 ClientSampleId :
 OR-02-111422

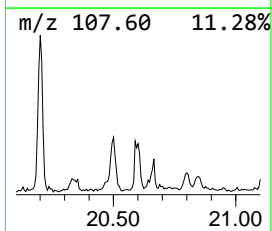
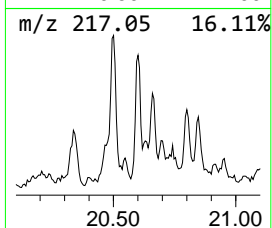
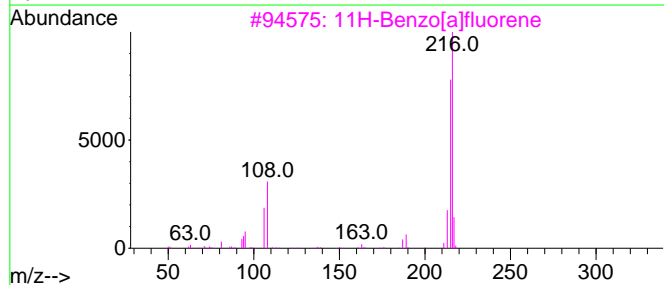
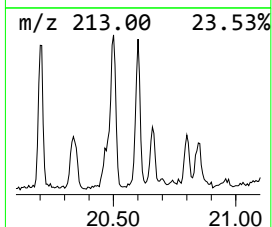
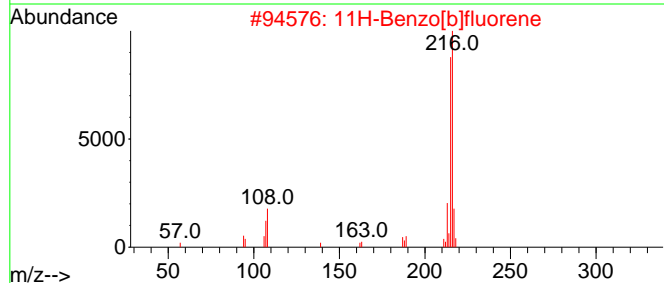
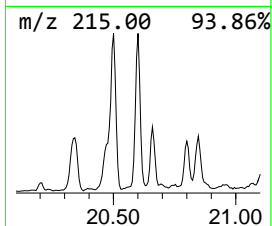
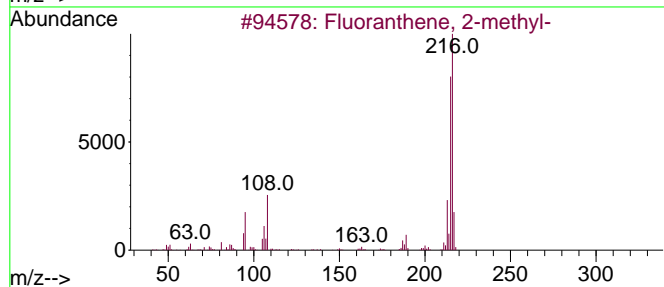
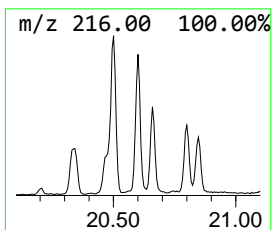
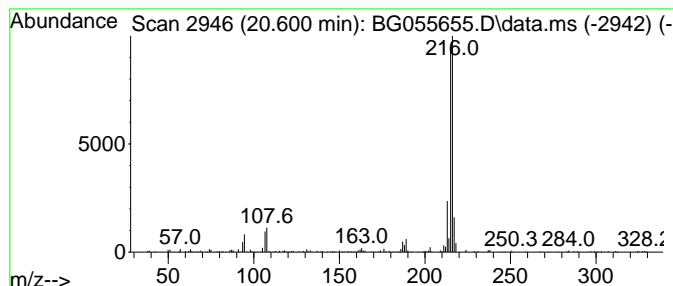
Quant Method : Z:\svoasrv\HPCHEM1\BNA_G\Methods\8270-BG111622.M
 Quant Title : ASP BNA STANDARDS FOR 5 POINT CALIBRATION

TIC Library : C:\Database\NIST20.L
 TIC Integration Parameters: LSCINT.P

 Peak Number 17 Fluoranthene, 2-methyl- Concentration Rank 12

R.T.	EstConc	Area	Relative to ISTD	R.T.
20.600	2.36 ng	167024	Chrysene-d12	21.916

Hit#	of 5	Tentative ID	MW	MolForm	CAS#	Qual
1		Fluoranthene, 2-methyl-	216	C17H12	033543-31-6	94
2		11H-Benzo[b]fluorene	216	C17H12	000243-17-4	93
3		11H-Benzo[a]fluorene	216	C17H12	000238-84-6	81
4		Pyrene, 1-methyl-	216	C17H12	002381-21-7	70
5		4-Trifluoromethylcinnamic acid	216	C10H7F3O2	002062-26-2	59



Data Path : Z:\svoasrv\HPCHEM1\BNA_G\Data\BG111622\
 Data File : BG055655.D
 Acq On : 16 Nov 2022 20:23
 Operator : CG/JU
 Sample : N5619-01
 Misc :
 ALS Vial : 16 Sample Multiplier: 1

Instrument :
 BNA_G
 ClientSampleId :
 OR-02-111422

Quant Method : Z:\svoasrv\HPCHEM1\BNA_G\Methods\8270-BG111622.M
 Quant Title : ASP BNA STANDARDS FOR 5 POINT CALIBRATION

TIC Library : C:\Database\NIST0.L
 TIC Integration Parameters: LSCINT.P

TIC Top Hit name	RT	EstConc	Units	Response	--Internal Standard--			
					#	RT	Resp	Conc
2-Pentanone, 4-...	5.307	11.4	ng	181782	1	8.250	319633	20.0
Ethanol, 2-(2-b...	10.824	15.4	ng	373969	2	11.082	487071	20.0
1,4-Methanonaph...	12.933	2.5	ng	59871	2	11.082	487071	20.0
Heptadecane, 2,...	13.397	2.0	ng	66171	3	14.872	655141	20.0
Tridecane, 5-pr...	16.088	2.2	ng	72124	3	14.872	655141	20.0
Pentadecane, 2,...	16.576	2.5	ng	92589	4	17.616	747309	20.0
n-Hexadecanoic ...	18.474	8.8	ng	329889	4	17.616	747309	20.0
Anthracene, 2-m...	18.532	5.2	ng	192371	4	17.616	747309	20.0
4H-Cyclopenta[d...	18.679	7.7	ng	287832	4	17.616	747309	20.0
Naphthalene, 2-...	18.973	2.3	ng	85137	4	17.616	747309	20.0
Phenanthrene, 2...	19.384	4.1	ng	151609	4	17.616	747309	20.0
Methyl stearate	19.543	2.6	ng	98073	4	17.616	747309	20.0
Pentadecanoic acid	19.737	2.6	ng	98068	4	17.616	747309	20.0
11H-Benzo[b]flu...	20.500	3.9	ng	277023	5	21.916	1413500	20.0
Fluoranthene, 2...	20.600	2.4	ng	167024	5	21.916	1413500	20.0