

Data Path : Z:\svoasrv\HPCHEM1\BNA_G\Data\BG111721\
 Data File : BG051091.D
 Acq On : 17 Nov 2021 14:15
 Operator : CG/JU
 Sample : M4666-01
 Misc :
 ALS Vial : 7 Sample Multiplier: 1

Instrument :
 BNA_G
 ClientSampleId :
 CONCRETE

Quant Time: Nov 17 14:49:45 2021
 Quant Method : Z:\svoasrv\HPCHEM1\BNA_G\Methods\8270-BG111321.M
 Quant Title : ASP BNA STANDARDS FOR 5 POINT CALIBRATION
 QLast Update : Mon Nov 15 03:55:35 2021
 Response via : Initial Calibration

Compound	R.T.	QIon	Response	Conc	Units	Dev(Min)
Internal Standards						
1) 1,4-Dichlorobenzene-d4	8.223	152	26512	20.000	ng	# 0.00
21) Naphthalene-d8	11.055	136	110581	20.000	ng	# 0.00
39) Acenaphthene-d10	14.851	164	77080	20.000	ng	0.00
64) Phenanthrene-d10	17.600	188	182369	20.000	ng	# 0.00
76) Chrysene-d12	21.901	240	156668	20.000	ng	# 0.00
86) Perylene-d12	25.315	264	160614	20.000	ng	0.01
System Monitoring Compounds						
5) 2-Fluorophenol	5.767	112	12979	7.323	ng	0.00
7) Phenol-d6	7.371	99	92100	36.818	ng	0.00
23) Nitrobenzene-d5	9.398	82	124994	50.036	ng	0.00
42) 2,4,6-Tribromophenol	16.343	330	1412	1.831	ng	0.00
45) 2-Fluorobiphenyl	13.476	172	255045	52.281	ng	0.00
79) Terphenyl-d14	20.186	244	434118	50.702	ng	0.00

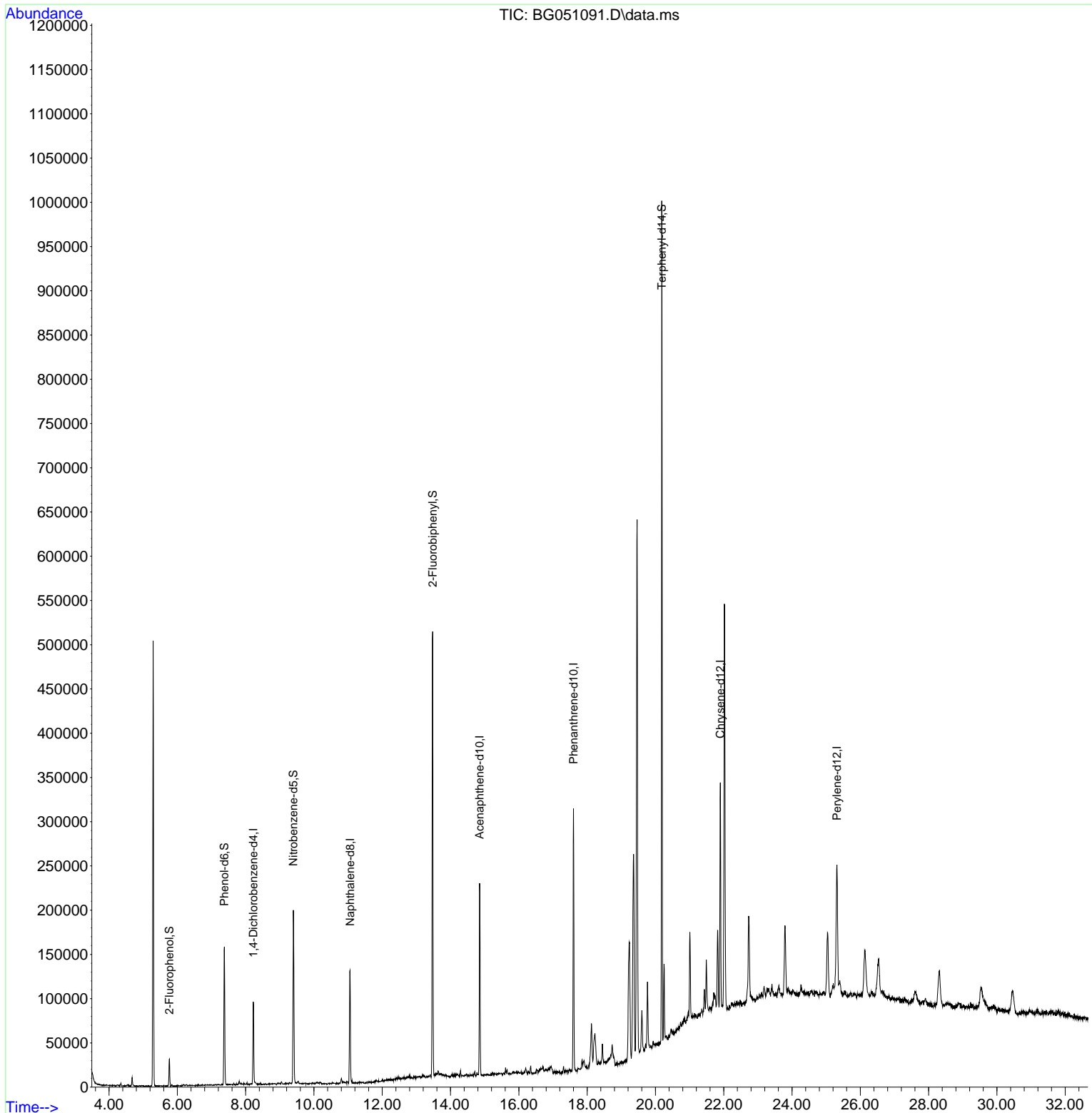
Target Compounds Qvalue

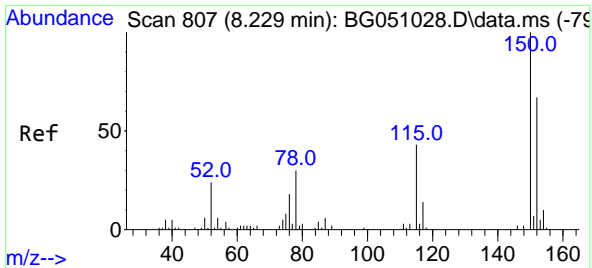
(#) = qualifier out of range (m) = manual integration (+) = signals summed

Data Path : Z:\svoasrv\HPCHEM1\BNA_G\Data\BG111721\
 Data File : BG051091.D
 Acq On : 17 Nov 2021 14:15
 Operator : CG/JU
 Sample : M4666-01
 Misc :
 ALS Vial : 7 Sample Multiplier: 1

Instrument :
 BNA_G
 ClientSampleId :
 CONCRETE

Quant Time: Nov 17 14:49:45 2021
 Quant Method : Z:\svoasrv\HPCHEM1\BNA_G\Methods\8270-BG111321.M
 Quant Title : ASP BNA STANDARDS FOR 5 POINT CALIBRATION
 QLast Update : Mon Nov 15 03:55:35 2021
 Response via : Initial Calibration

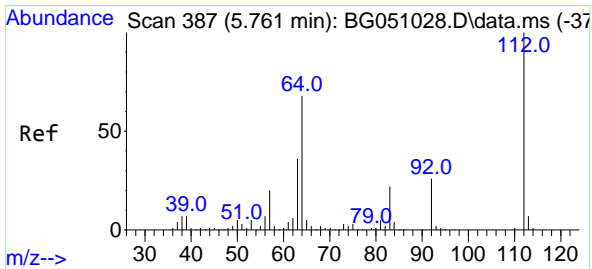
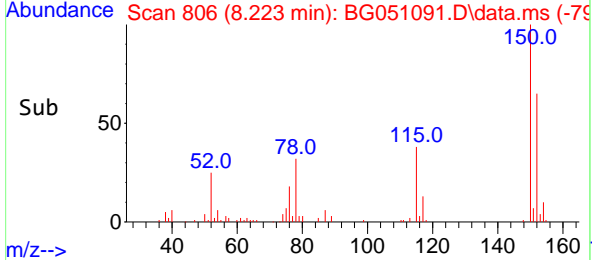
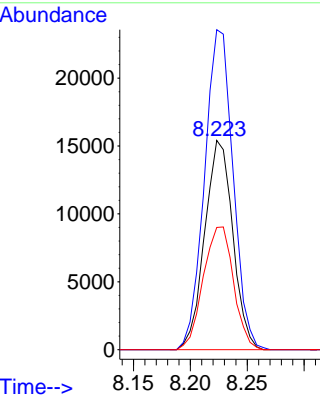
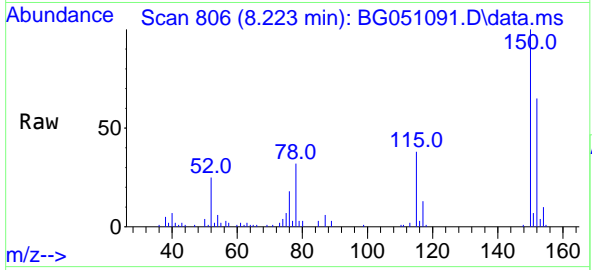




#1
 1,4-Dichlorobenzene-d4
 Concen: 20.000 ng
 RT: 8.223 min Scan# 80
 Delta R.T. -0.006 min
 Lab File: BG051091.D
 Acq: 17 Nov 2021 14:15

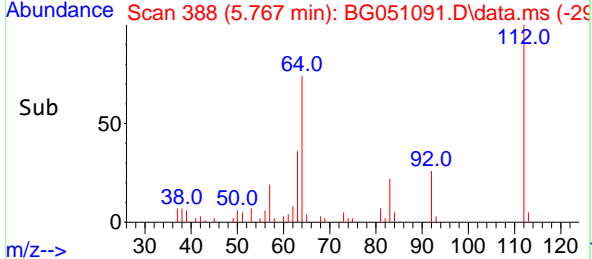
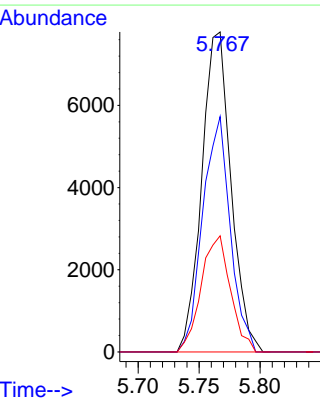
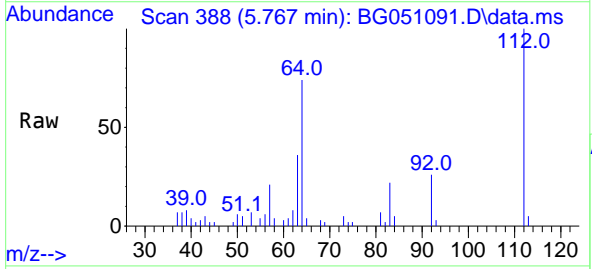
Instrument : BNA_G
 ClientSampleId : CONCRETE

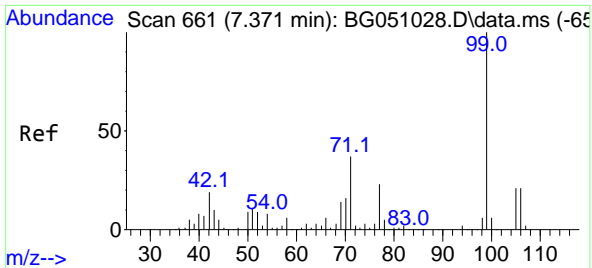
Tgt Ion:152 Resp: 26512
 Ion Ratio Lower Upper
 152 100
 150 152.9 119.4 179.0
 115 58.4 60.2 90.4#



#5
 2-Fluorophenol
 Concen: 7.323 ng
 RT: 5.767 min Scan# 388
 Delta R.T. 0.006 min
 Lab File: BG051091.D
 Acq: 17 Nov 2021 14:15

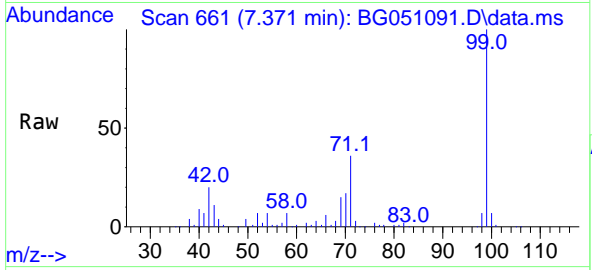
Tgt Ion:112 Resp: 12979
 Ion Ratio Lower Upper
 112 100
 64 73.6 46.7 70.1#
 63 36.3 35.3 52.9





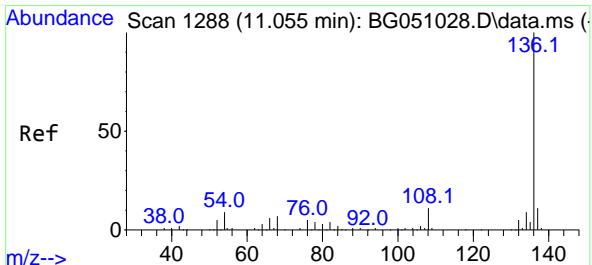
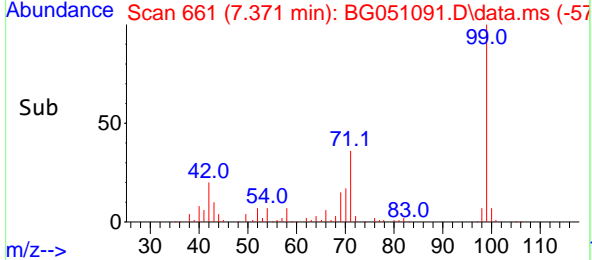
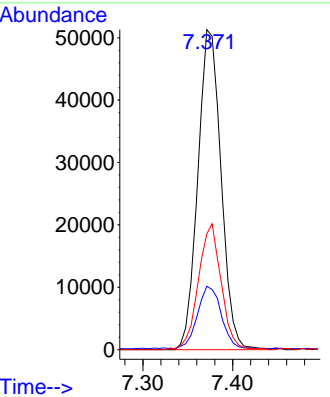
#7
 Phenol-d6
 Concen: 36.818 ng
 RT: 7.371 min Scan# 60
 Delta R.T. 0.000 min
 Lab File: BG051091.D
 Acq: 17 Nov 2021 14:15

Instrument : BNA_G
 ClientSampleId : CONCRETE

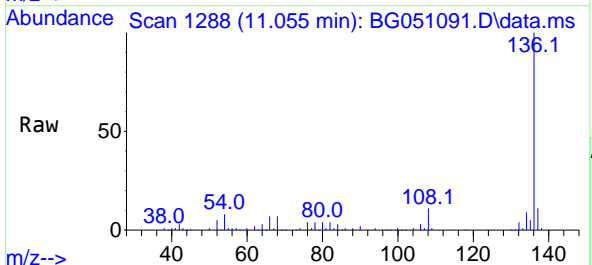


Tgt Ion: 99 Resp: 92100

Ion	Ratio	Lower	Upper
99	100		
42	19.8	20.5	30.7#
71	36.2	41.5	62.3#

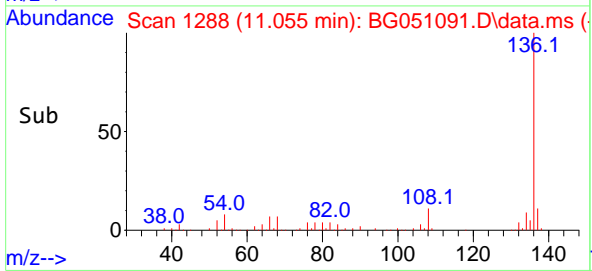
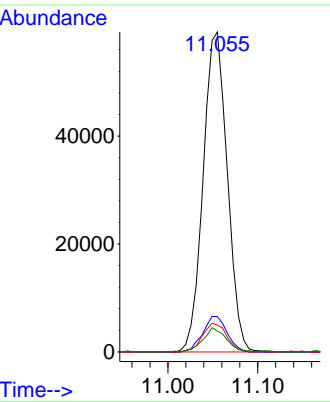


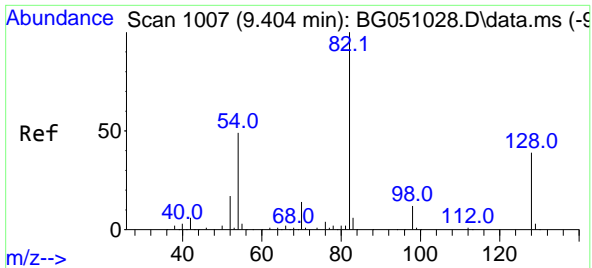
#21
 Naphthalene-d8
 Concen: 20.000 ng
 RT: 11.055 min Scan# 1288
 Delta R.T. 0.000 min
 Lab File: BG051091.D
 Acq: 17 Nov 2021 14:15



Tgt Ion: 136 Resp: 110581

Ion	Ratio	Lower	Upper
136	100		
137	11.0	8.2	12.2
54	8.4	5.5	8.3#
68	6.6	2.3	3.5#



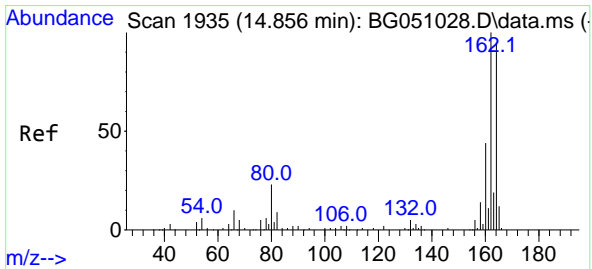
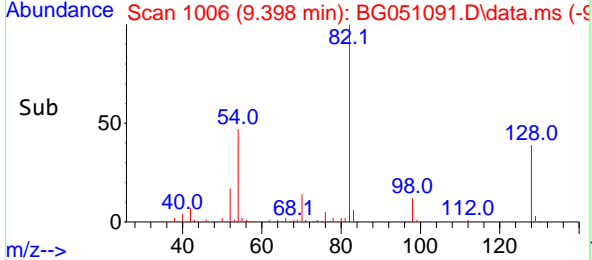
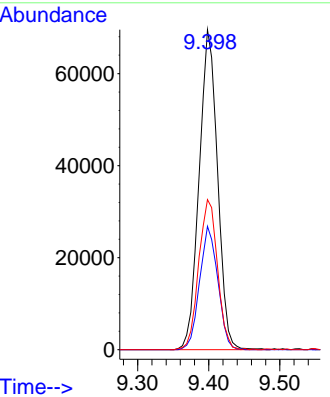
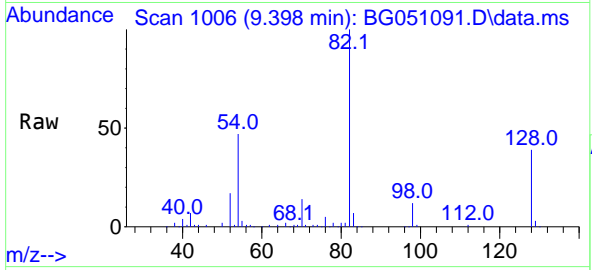


#23
 Nitrobenzene-d5
 Concen: 50.036 ng
 RT: 9.398 min Scan# 10
 Delta R.T. -0.006 min
 Lab File: BG051091.D
 Acq: 17 Nov 2021 14:15

Instrument : BNA_G
 ClientSampleId : CONCRETE

Tgt Ion: 82 Resp: 124994

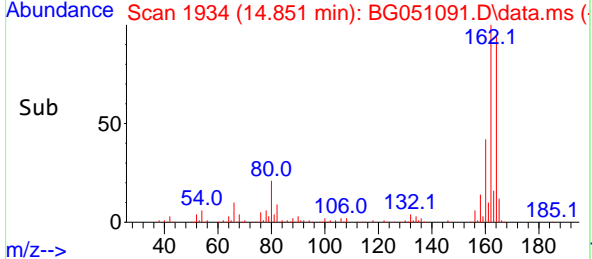
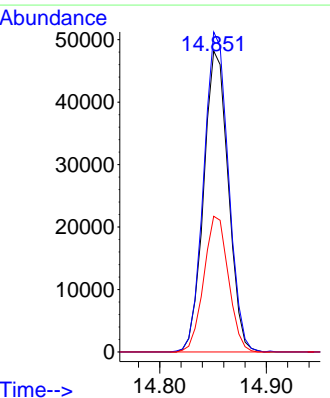
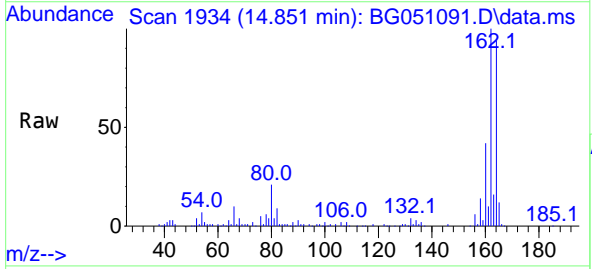
Ion	Ratio	Lower	Upper
82	100		
128	38.5	29.8	44.6
54	46.9	45.8	68.8

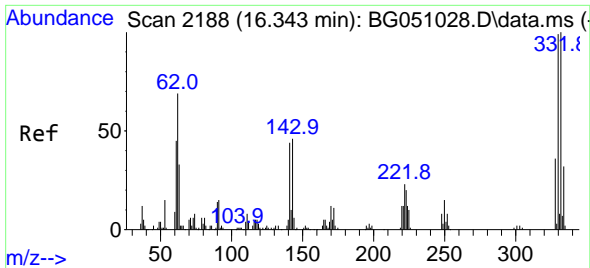


#39
 Acenaphthene-d10
 Concen: 20.000 ng
 RT: 14.851 min Scan# 1934
 Delta R.T. -0.005 min
 Lab File: BG051091.D
 Acq: 17 Nov 2021 14:15

Tgt Ion: 164 Resp: 77080

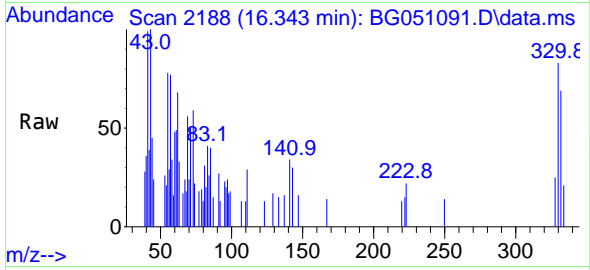
Ion	Ratio	Lower	Upper
164	100		
162	106.3	81.4	122.0
160	45.1	34.9	52.3



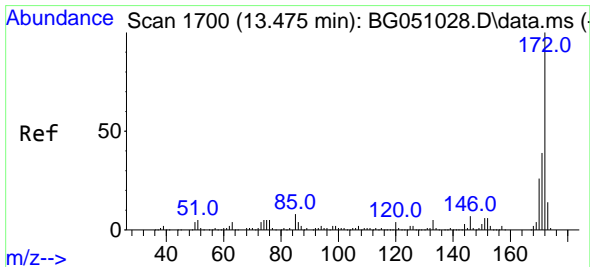
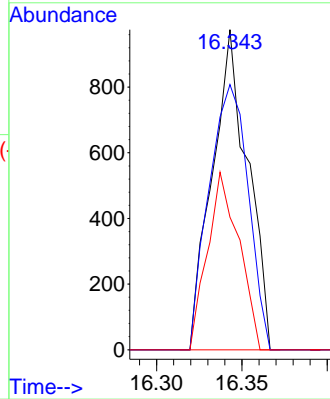
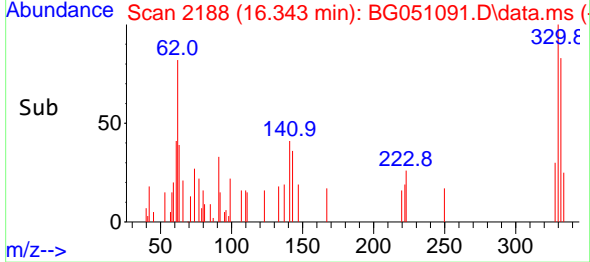


#42
 2,4,6-Tribromophenol
 Concen: 1.831 ng
 RT: 16.343 min Scan# 21
 Delta R.T. 0.000 min
 Lab File: BG051091.D
 Acq: 17 Nov 2021 14:15

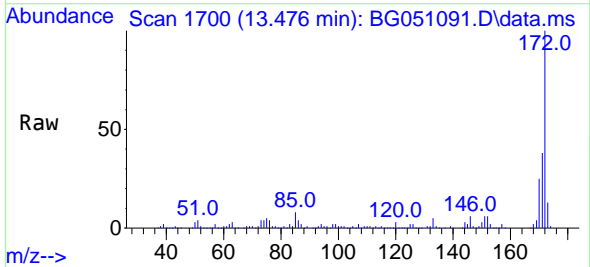
Instrument :
 BNA_G
 ClientSampleId :
 CONCRETE



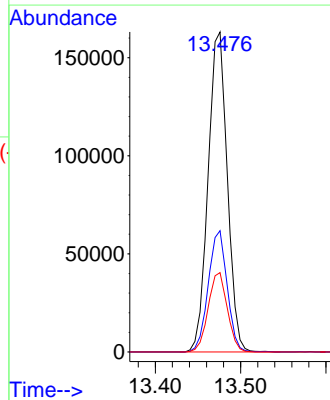
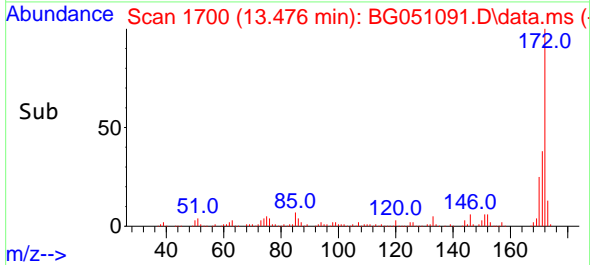
Tgt Ion:330 Resp: 1412
 Ion Ratio Lower Upper
 330 100
 332 91.4 77.3 115.9
 141 49.2 35.6 53.4

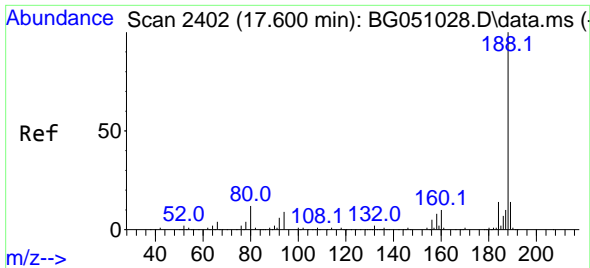


#45
 2-Fluorobiphenyl
 Concen: 52.281 ng
 RT: 13.476 min Scan# 1700
 Delta R.T. 0.001 min
 Lab File: BG051091.D
 Acq: 17 Nov 2021 14:15



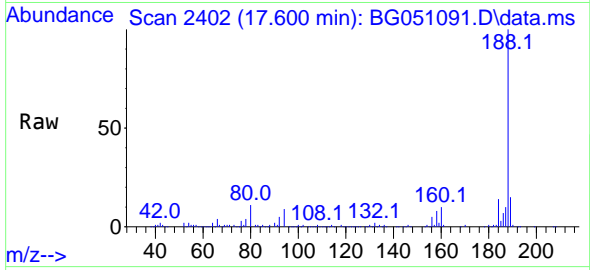
Tgt Ion:172 Resp: 255045
 Ion Ratio Lower Upper
 172 100
 171 37.9 28.6 43.0
 170 24.8 18.6 27.8



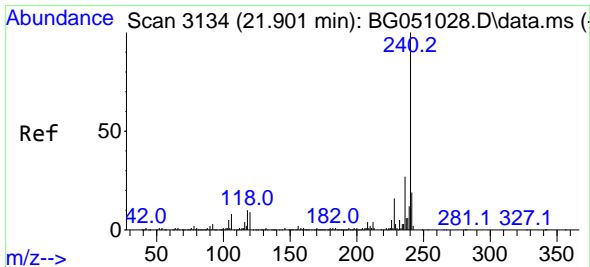
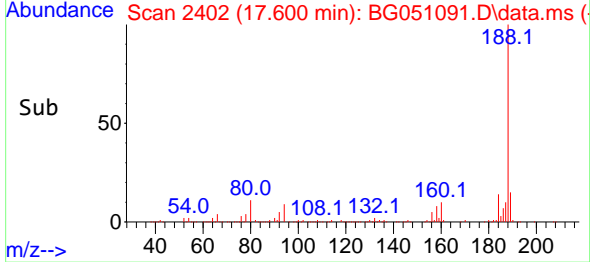
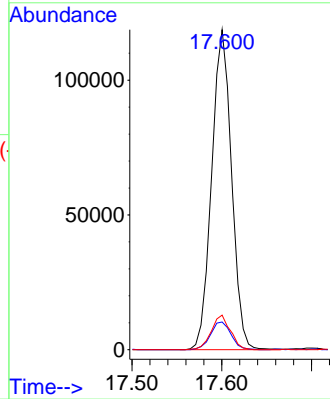


#64
 Phenanthrene-d10
 Concen: 20.000 ng
 RT: 17.600 min Scan# 2402
 Delta R.T. 0.001 min
 Lab File: BG051091.D
 Acq: 17 Nov 2021 14:15

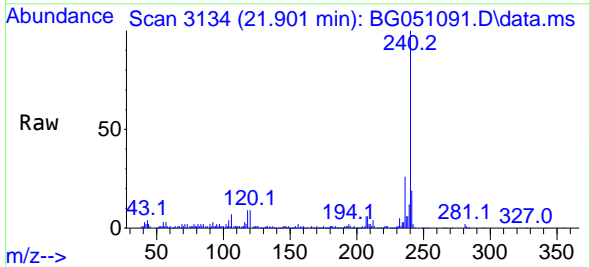
Instrument :
 BNA_G
 ClientSampleId :
 CONCRETE



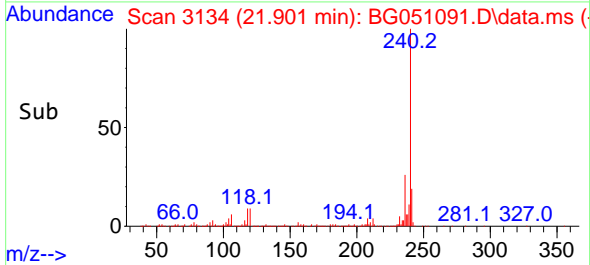
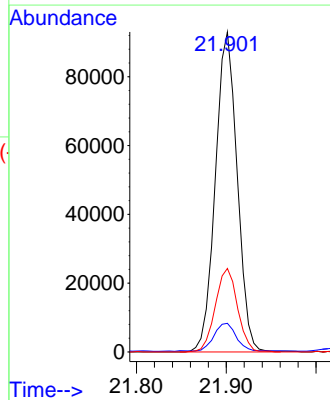
Tgt Ion:188 Resp: 182369
 Ion Ratio Lower Upper
 188 100
 94 8.7 5.4 8.0#
 80 10.8 3.7 5.5#

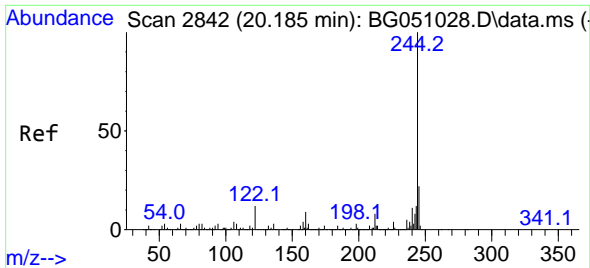


#76
 Chrysene-d12
 Concen: 20.000 ng
 RT: 21.901 min Scan# 3134
 Delta R.T. 0.001 min
 Lab File: BG051091.D
 Acq: 17 Nov 2021 14:15



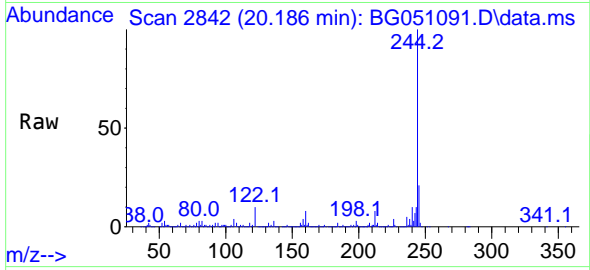
Tgt Ion:240 Resp: 156668
 Ion Ratio Lower Upper
 240 100
 120 9.0 4.2 6.2#
 236 26.1 21.8 32.6



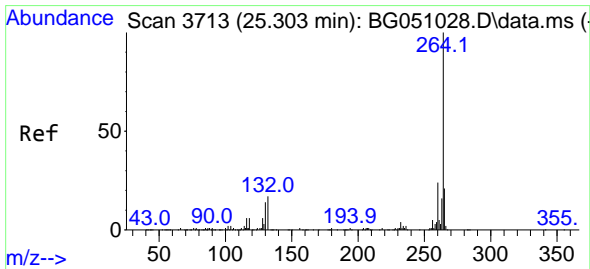
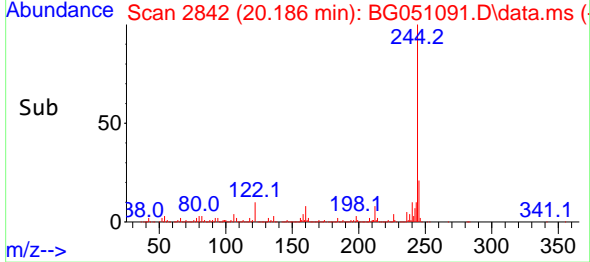
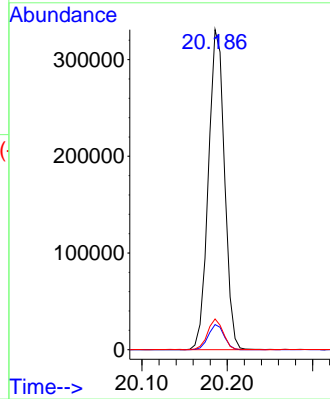


#79
 Terphenyl-d14
 Concen: 50.702 ng
 RT: 20.186 min Scan# 21
 Delta R.T. 0.001 min
 Lab File: BG051091.D
 Acq: 17 Nov 2021 14:15

Instrument :
 BNA_G
 ClientSampleId :
 CONCRETE



Tgt Ion:244 Resp: 434118
 Ion Ratio Lower Upper
 244 100
 212 7.9 6.9 10.3
 122 9.6 5.0 7.6#



#86
 Perylene-d12
 Concen: 20.000 ng
 RT: 25.315 min Scan# 3715
 Delta R.T. 0.012 min
 Lab File: BG051091.D
 Acq: 17 Nov 2021 14:15

Tgt Ion:264 Resp: 160614
 Ion Ratio Lower Upper
 264 100
 260 24.4 19.4 29.2
 265 21.5 16.9 25.3

