

Data Path : Z:\HPCHEM1\BNA_G\DATA\BG111816\
 Data File : BG024849.D
 Acq On : 19 Nov 2016 6:43
 Operator : UM/SJ
 Sample : H5695-14
 Misc :
 ALS Vial : 23 Sample Multiplier: 1

Instrument :
 BNA_G
 ClientSampleId :
 JHSW0

Quant Time: Nov 20 23:35:48 2016
 Quant Method : Z:\HPCHEM1\BNA_G\METHODS\SOM02.2-EPA-BG111416.M
 Quant Title : SVOA CALIBRATION
 QLast Update : Sun Nov 20 23:33:22 2016
 Response via : Initial Calibration

Internal Standards	R.T.	QIon	Response	Conc	Units	Dev(Min)
1) 1,4-Dichlorobenzene-d4	8.26	152	125202	20.00	ng/ul	0.00
18) Naphthalene-d8	11.09	136	569958	20.00	ng/ul	0.00
35) Acenaphthene-d10	14.88	164	480079	20.00	ng/ul	0.00
61) Phenanthrene-d10	17.62	188	987523	20.00	ng/ul	0.00
75) Chrysene-d12	21.92	240	1229283	20.00	ng/ul	0.00
83) Perylene-d12	25.34	264	1316225	20.00	ng/ul	0.00

System Monitoring Compounds

3) 1,4-Dioxane-d8	3.62	96	9034	3.74	ng/uL	0.00
5) Phenol-d5	7.39	99	240173	22.39	ng/ul	0.00
7) Bis-(2-Chloroethyl)ether-d	7.58	67	158550	23.50	ng/ul	0.00
9) 2-Chlorophenol-d4	7.79	132	183879	23.91	ng/ul	0.00
13) 4-Methylphenol-d8	8.95	113	211018	23.43	ng/ul	0.00
19) Nitrobenzene-d5	9.43	128	93554	21.68	ng/ul	0.00
22) 2-Nitrophenol-d4	10.15	143	116377	22.59	ng/ul	0.00
26) 2,4-Dichlorophenol-d3	10.70	165	222873	21.73	ng/ul	0.00
29) 4-Chloroaniline-d4	11.22	131	272779	23.81	ng/ul	0.00
43) Dimethylphthalate-d6	14.27	166	770521	22.01	ng/ul	0.00
46) Acenaphthylene-d8	14.57	160	903150	23.68	ng/ul	0.00
51) 4-Nitrophenol-d4	15.06	143	116549	18.71	ng/ul	0.00
57) Fluorene-d10	15.87	176	715079	21.70	ng/ul	0.00
62) 4,6-Dinitro-2-methylphenol	15.97	200	116288	17.13	ng/ul	0.00
70) Anthracene-d10	17.72	188	1071158	24.56	ng/ul	0.00
76) Pyrene-d10	19.99	212	1273247	23.89	ng/ul	0.00
87) Benzo(a)pyrene-d12	25.11	264	1383494	24.01	ng/ul	0.00

Target Compounds

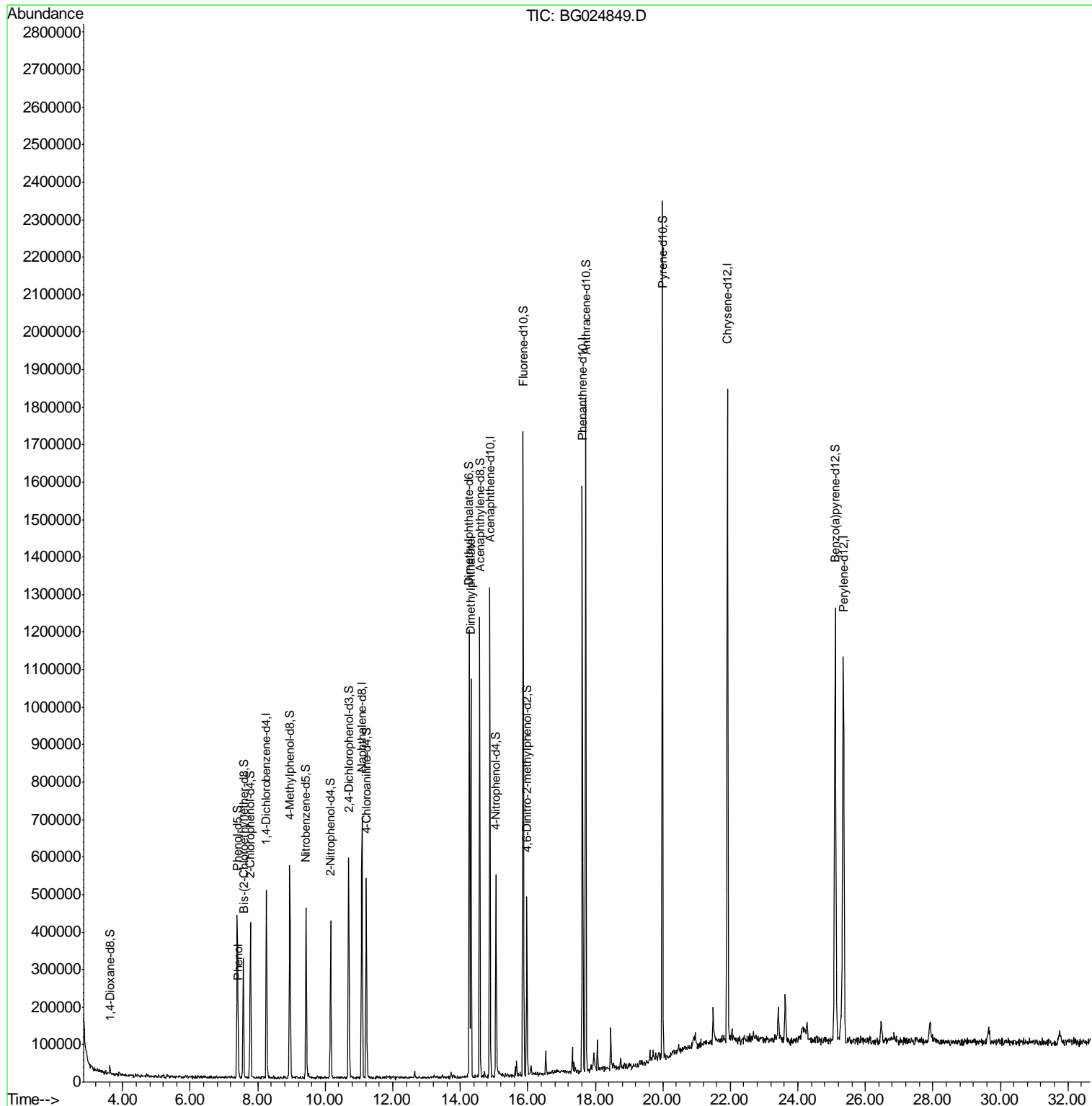
					Qvalue
6) Phenol	7.42	94	27517	2.46	ng/ul# 73
44) Dimethylphthalate	14.31	163	635440	18.92	ng/ul 99

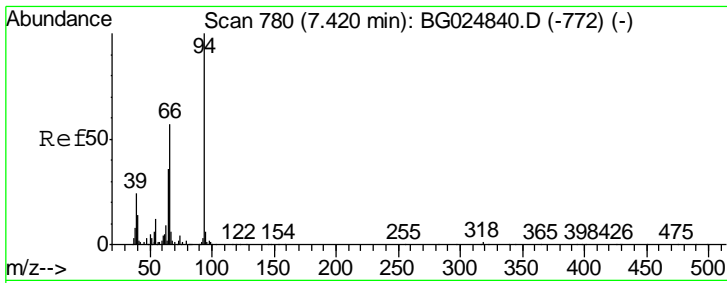
(#) = qualifier out of range (m) = manual integration (+) = signals summed

Data Path : Z:\HPCHEM1\BNA_G\DATA\BG111816\
 Data File : BG024849.D
 Acq On : 19 Nov 2016 6:43
 Operator : UM/SJ
 Sample : H5695-14
 Misc :
 ALS Vial : 23 Sample Multiplier: 1

Instrument :
 BNA_G
 ClientSampled :
 JHSW0

Quant Time: Nov 20 23:35:48 2016
 Quant Method : Z:\HPCHEM1\BNA_G\METHODS\SOM02.2-EPA-BG111416.M
 Quant Title : SVOA CALIBRATION
 QLast Update : Sun Nov 20 23:33:22 2016
 Response via : Initial Calibration

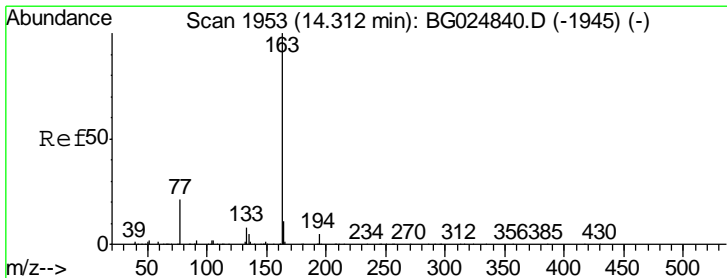
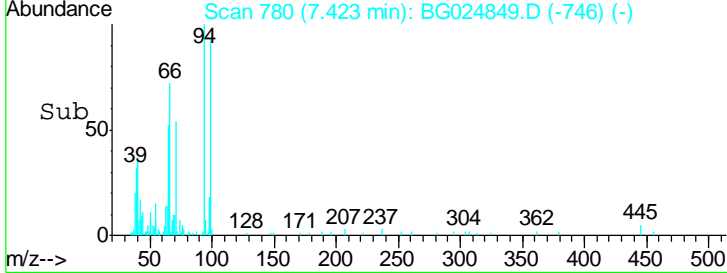
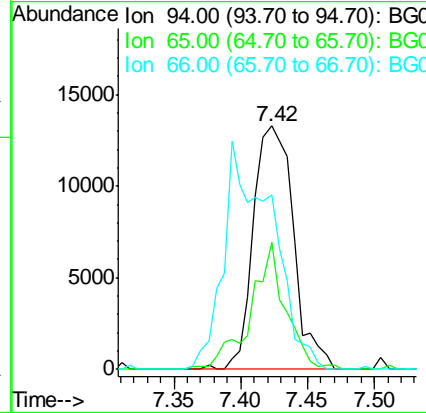
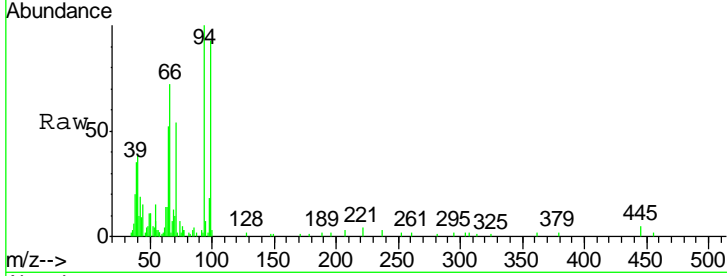




#6
 Phenol
 Concen: 2.46 ng/ul
 RT: 7.42 min Scan# 780
 Delta R.T. 0.00 min
 Lab File: BG024849.D
 Acq: 19 Nov 2016 6:43

Instrument :
 BNA_G
 ClientSampled :
 JHSW0

Tgt Ion	Resp	Lower	Upper
94	27517		
65	52.5	26.8	40.2#
66	71.9	44.4	66.6#



#44
 Dimethylphthalate
 Concen: 18.92 ng/ul
 RT: 14.31 min Scan# 1953
 Delta R.T. 0.00 min
 Lab File: BG024849.D
 Acq: 19 Nov 2016 6:43

Tgt Ion	Resp	Lower	Upper
163	635440		
194	4.8	3.4	5.0
164	11.2	9.0	13.4

