

Data Path : Z:\HPCHEM1\BNA_G\DATA\BG111816\
 Data File : BG024853.D
 Acq On : 19 Nov 2016 9:18
 Operator : UM/SJ
 Sample : SSTDCCC020EC
 Misc :
 ALS Vial : 2 Sample Multiplier: 1

Instrument :
 BNA_G
 ClientSampleId :
 SSTD02019

Quant Time: Nov 20 23:38:24 2016
 Quant Method : Z:\HPCHEM1\BNA_G\METHODS\SOM02.2-EPA-BG111416.M
 Quant Title : SVOA CALIBRATION
 QLast Update : Sun Nov 20 23:33:22 2016
 Response via : Initial Calibration

Internal Standards	R.T.	QIon	Response	Conc	Units	Dev(Min)
1) 1,4-Dichlorobenzene-d4	8.26	152	112841	20.00	ng/ul	0.00
18) Naphthalene-d8	11.09	136	484197	20.00	ng/ul	0.00
35) Acenaphthene-d10	14.88	164	384854	20.00	ng/ul	0.00
61) Phenanthrene-d10	17.62	188	779992	20.00	ng/ul	0.00
75) Chrysene-d12	21.92	240	949071	20.00	ng/ul	0.00
83) Perylene-d12	25.36	264	1014631	20.00	ng/ul	0.02

System Monitoring Compounds

3) 1,4-Dioxane-d8	3.62	96	15735	7.23	ng/uL	0.00
5) Phenol-d5	7.40	99	205152	21.22	ng/ul	0.00
7) Bis-(2-Chloroethyl)ether-d	7.58	67	118275	19.45	ng/ul	0.00
9) 2-Chlorophenol-d4	7.79	132	141419	20.40	ng/ul	0.00
13) 4-Methylphenol-d8	8.96	113	167012	20.57	ng/ul	0.00
19) Nitrobenzene-d5	9.44	128	73803	20.13	ng/ul	0.00
22) 2-Nitrophenol-d4	10.16	143	90246	20.62	ng/ul	0.00
26) 2,4-Dichlorophenol-d3	10.70	165	186145	21.37	ng/ul	0.00
29) 4-Chloroaniline-d4	11.22	131	207354	21.31	ng/ul	0.00
43) Dimethylphthalate-d6	14.27	166	565333	20.15	ng/ul	0.00
46) Acenaphthylene-d8	14.58	160	669491	21.89	ng/ul	0.00
51) 4-Nitrophenol-d4	15.06	143	89773	17.98	ng/ul	0.00
57) Fluorene-d10	15.87	176	539894	20.44	ng/ul	0.00
62) 4,6-Dinitro-2-methylphenol	15.98	200	92668	17.28	ng/ul	0.00
70) Anthracene-d10	17.72	188	747346	21.69	ng/ul	0.00
76) Pyrene-d10	19.99	212	860408	20.91	ng/ul	0.00
87) Benzo(a)pyrene-d12	25.11	264	922955	20.78	ng/ul	0.01

Target Compounds

Target Compounds	R.T.	QIon	Response	Conc	Units	Qvalue
2) 1,4-Dioxane	3.66	88	19807	7.26	ng/uL	91
4) Benzaldehyde	7.40	77	151896	24.39	ng/ul	92
6) Phenol	7.43	94	204135	20.22	ng/ul	93
8) Bis(2-Chloroethyl)ether	7.67	93	149083	20.74	ng/ul	96
10) 2-Chlorophenol	7.82	128	137352	20.48	ng/ul	89
11) 2-Methylphenol	8.69	108	153451	20.74	ng/ul	100
12) 2,2'-oxybis(1-Chloropropan	8.79	45	255552	20.94	ng/ul	98
14) Acetophenone	9.09	105	253909	20.77	ng/ul	94
15) N-Nitroso-di-n-propylamine	9.06	70	146775	21.13	ng/ul#	81
16) 4-Methylphenol	9.02	108	167182	20.89	ng/ul	97
17) Hexachloroethane	9.35	117	65244	21.26	ng/ul	94
20) Nitrobenzene	9.48	77	218034	20.03	ng/ul	98
21) Isophorone	10.00	82	405555	19.98	ng/ul#	94
23) 2-Nitrophenol	10.20	139	93813	21.22	ng/ul#	80
24) 2,4-Dimethylphenol	10.23	107	213610	20.34	ng/ul	95
25) Bis(2-Chloroethoxy)methane	10.47	93	210013	19.70	ng/ul#	88
27) 2,4-Dichlorophenol	10.73	162	172515	20.67	ng/ul	95
28) Naphthalene	11.14	128	494927	21.31	ng/ul	99
30) 4-Chloroaniline	11.25	127	206703	22.02	ng/ul	94
31) Hexachlorobutadiene	11.41	225	152038	20.75	ng/ul	93
32) Caprolactam	12.00	113	58471	17.77	ng/ul#	74
33) 4-Chloro-3-methylphenol	12.34	107	206483	20.43	ng/ul	94
34) 2-Methylnaphthalene	12.72	142	387637	21.21	ng/ul	93

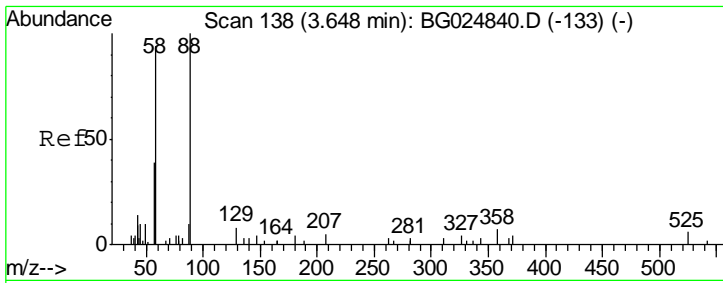
Data Path : Z:\HPCHEM1\BNA_G\DATA\BG111816\
 Data File : BG024853.D
 Acq On : 19 Nov 2016 9:18
 Operator : UM/SJ
 Sample : SSTDCCC020EC
 Misc :
 ALS Vial : 2 Sample Multiplier: 1

Instrument :
 BNA_G
 ClientSampleId :
 SSTD02019

Quant Time: Nov 20 23:38:24 2016
 Quant Method : Z:\HPCHEM1\BNA_G\METHODS\SOM02.2-EPA-BG111416.M
 Quant Title : SVOA CALIBRATION
 QLast Update : Sun Nov 20 23:33:22 2016
 Response via : Initial Calibration

Internal Standards	R.T.	QIon	Response	Conc	Units	Dev(Min)
36) 1,2,4,5-Tetrachlorobenzene	13.08	216	284254	22.76	ng/ul	94
37) Hexachlorocyclopentadiene	13.05	237	145085	18.03	ng/ul	98
38) 2,4,6-Trichlorophenol	13.32	196	164561	21.66	ng/ul	90
39) 2,4,5-Trichlorophenol	13.39	196	175178	21.22	ng/ul	96
40) 1,1'-Biphenyl	13.72	154	541405	21.86	ng/ul	98
41) 2-Chloronaphthalene	13.77	162	430264	22.36	ng/ul	98
42) 2-Nitroaniline	13.97	65	158165	20.72	ng/ul	99
44) Dimethylphthalate	14.32	163	546856	20.31	ng/ul	95
45) 2,6-Dinitrotoluene	14.46	165	117829	20.82	ng/ul	96
47) Acenaphthylene	14.61	152	645213	21.80	ng/ul	99
48) 3-Nitroaniline	14.79	138	108262	20.70	ng/ul#	98
49) Acenaphthene	14.94	153	444557	21.22	ng/ul	100
50) 2,4-Dinitrophenol	14.99	184	57502	14.20	ng/ul	91
52) 4-Nitrophenol	15.08	109	100458	16.80	ng/ul	87
53) Dibenzofuran	15.27	168	673106	21.00	ng/ul	98
54) 2,4-Dinitrotoluene	15.24	165	171858	20.08	ng/ul#	88
55) 2,3,4,6-Tetrachlorophenol	15.50	232	171659	19.99	ng/ul#	99
56) Diethylphthalate	15.67	149	543632	19.01	ng/ul	96
58) Fluorene	15.92	166	524324	20.15	ng/ul	97
59) 4-Chlorophenyl-phenylether	15.90	204	297096	20.19	ng/ul#	84
60) 4-Nitroaniline	15.94	138	114784	19.30	ng/ul	95
63) 4,6-Dinitro-2-methylphenol	16.00	198	89436	16.45	ng/ul#	91
64) N-Nitrosodiphenylamine	16.12	169	472535	22.42	ng/ul	93
65) 4-Bromophenyl-phenylether	16.80	248	209715	22.11	ng/ul	92
66) Hexachlorobenzene	16.92	284	233770	22.27	ng/ul#	94
67) Atrazine	17.05	200	208568	21.11	ng/ul	96
68) Pentachlorophenol	17.26	266	126344	20.39	ng/ul	90
69) Phenanthrene	17.66	178	830080	21.35	ng/ul	98
71) Anthracene	17.76	178	865779	21.53	ng/ul	98
72) Carbazole	18.03	167	722298	21.89	ng/ul	98
73) Di-n-butylphthalate	18.55	149	865543	20.82	ng/ul	98
74) Fluoranthene	19.66	202	980193	21.70	ng/ul	96
77) Pyrene	20.02	202	974891	20.90	ng/ul	98
78) Butylbenzylphthalate	20.88	149	399700	20.93	ng/ul	96
79) 3,3'-Dichlorobenzidine	21.81	252	405635	22.23	ng/ul#	93
80) Benzo(a)anthracene	21.90	228	1094161	21.19	ng/ul	97
81) Bis(2-ethylhexyl)phthalate	21.75	149	565560	21.65	ng/ul	96
82) Chrysene	21.97	228	1045456	21.59	ng/ul	96
84) Di-n-octyl phthalate	23.03	149	974165	22.68	ng/ul	100
85) Benzo(b)fluoranthene	24.25	252	1086071	20.32	ng/ul	98
86) Benzo(k)fluoranthene	24.33	252	1076315	21.20	ng/ul	97
88) Benzo(a)pyrene	25.19	252	1087542	21.02	ng/ul	96
89) Indeno(1,2,3-cd)pyrene	29.31	276	1277925	19.76	ng/ul	99
90) Dibenzo(a,h)anthracene	29.37	278	1107797	20.55	ng/ul	99
91) Benzo(g,h,i)perylene	30.54	276	1054716	19.80	ng/ul	97

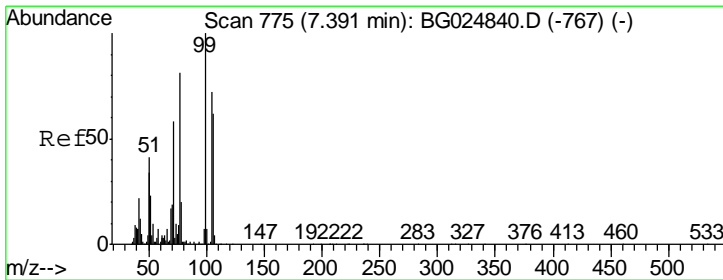
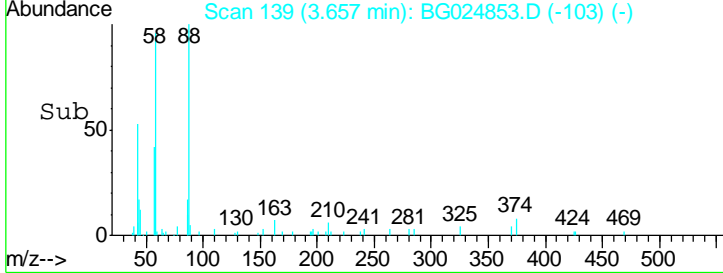
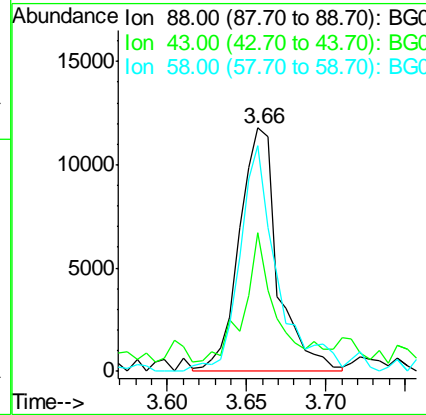
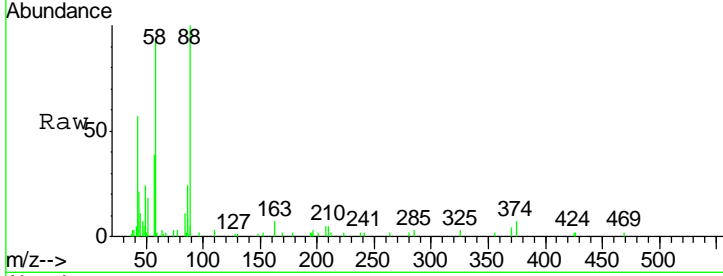
(#) = qualifier out of range (m) = manual integration (+) = signals summed



#2
 1,4-Dioxane
 Concen: 7.26 ng/uL
 RT: 3.66 min Scan# 139
 Delta R.T. 0.01 min
 Lab File: BG024853.D
 Acq: 19 Nov 2016 9:18

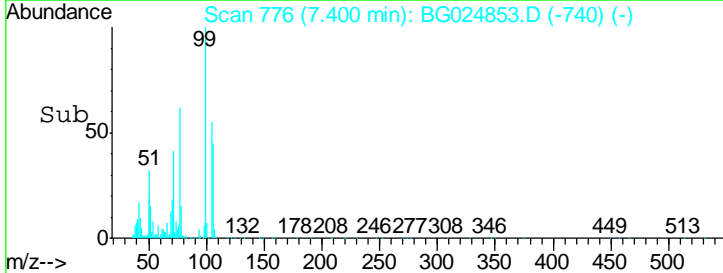
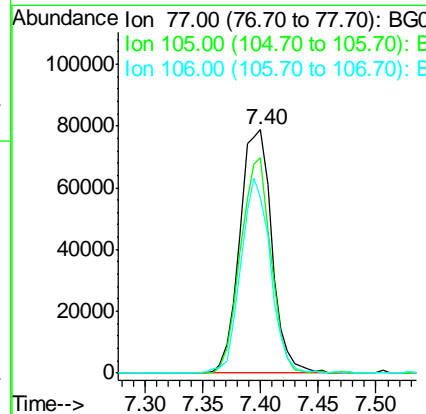
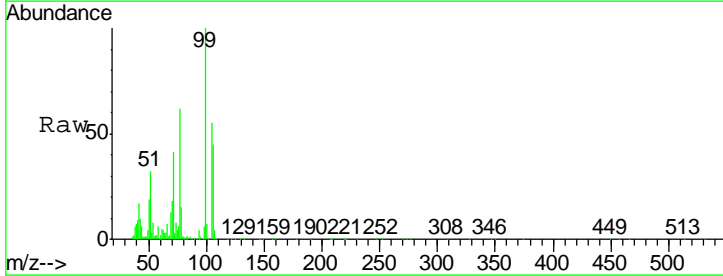
Instrument :
 BNA_G
 ClientSampleID :
 SSTD02019

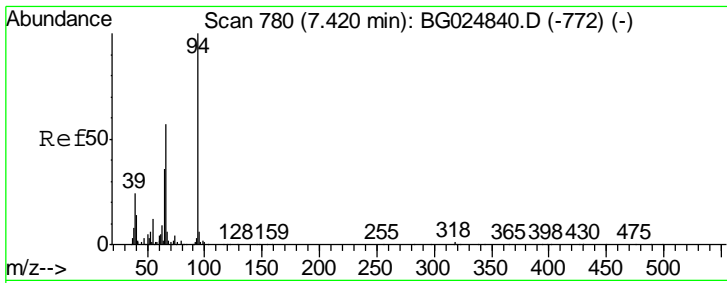
Tgt Ion	Resp	Lower	Upper
88	19807		
88	100		
43	57.2	39.2	58.8
58	92.9	69.4	104.0



#4
 Benzaldehyde
 Concen: 24.39 ng/ul
 RT: 7.40 min Scan# 776
 Delta R.T. 0.01 min
 Lab File: BG024853.D
 Acq: 19 Nov 2016 9:18

Tgt Ion	Resp	Lower	Upper
77	151896		
77	100		
105	88.7	62.0	93.0
106	72.3	60.2	90.4

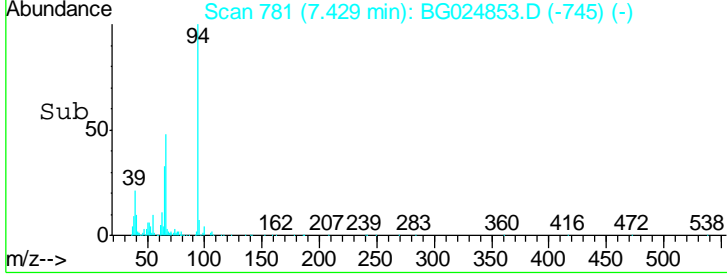
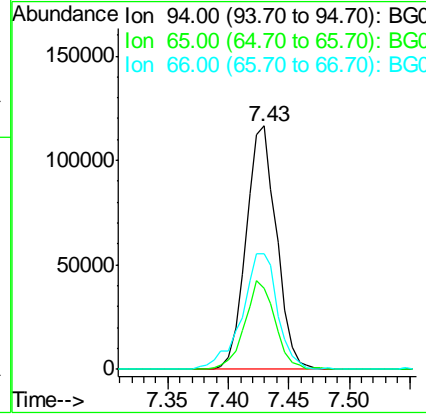
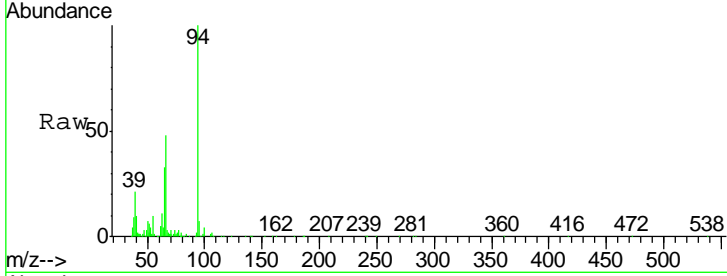




#6
 Phenol
 Concen: 20.22 ng/ul
 RT: 7.43 min Scan# 781
 Delta R.T. 0.01 min
 Lab File: BG024853.D
 Acq: 19 Nov 2016 9:18

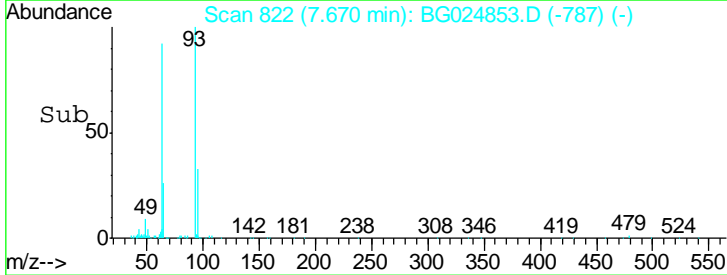
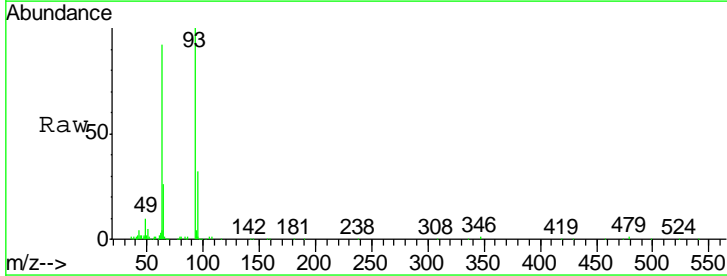
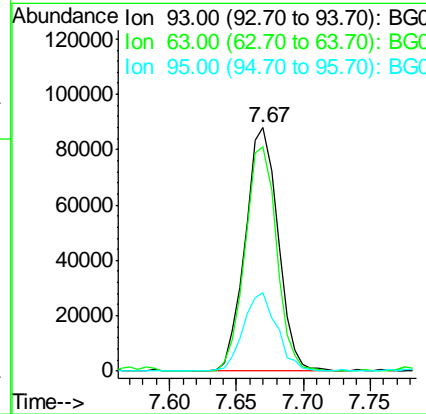
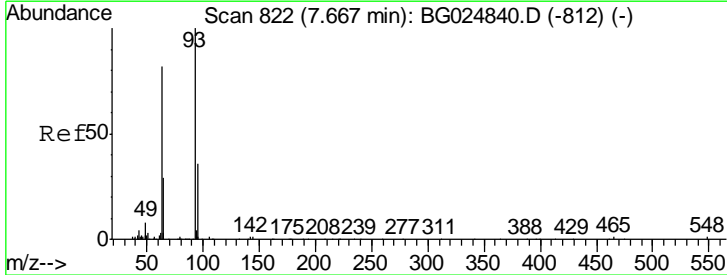
Instrument :
 BNA_G
 ClientSampleId :
 SSTD02019

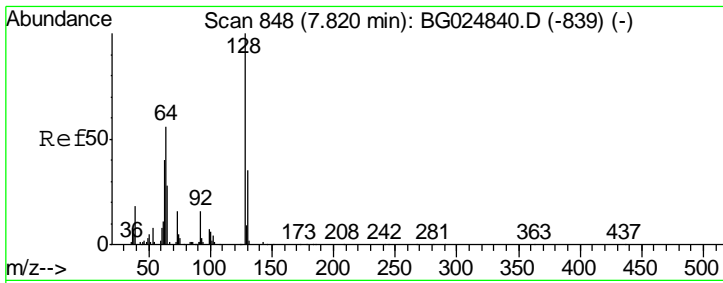
Tgt Ion	Resp	Lower	Upper
94	204135		
65	33.1	26.8	40.2
66	47.6	44.4	66.6



#8
 Bis(2-Chloroethyl)ether
 Concen: 20.74 ng/ul
 RT: 7.67 min Scan# 822
 Delta R.T. 0.00 min
 Lab File: BG024853.D
 Acq: 19 Nov 2016 9:18

Tgt Ion	Resp	Lower	Upper
93	149083		
63	91.9	75.5	113.3
95	32.5	29.2	43.8

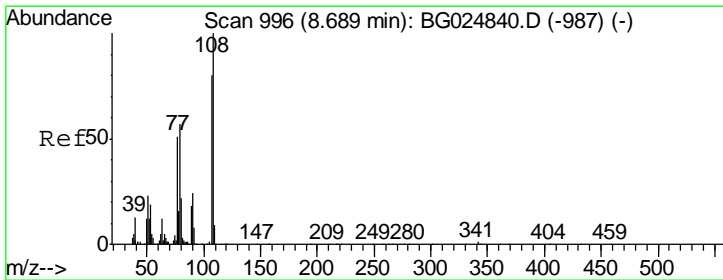
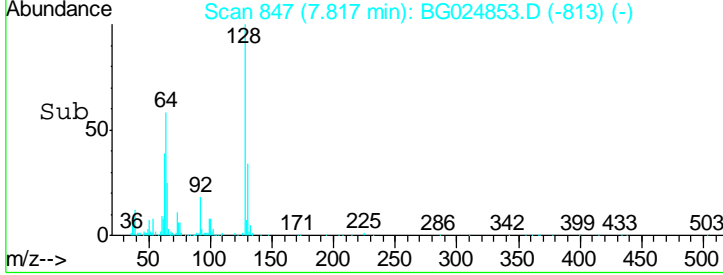
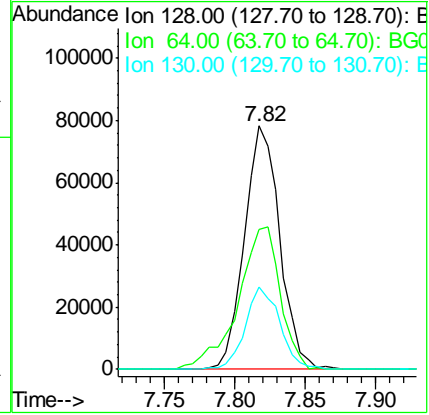
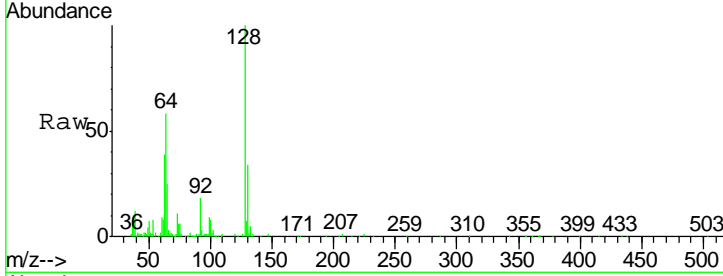




#10
 2-Chlorophenol
 Concen: 20.48 ng/ul
 RT: 7.82 min Scan# 847
 Delta R.T. -0.00 min
 Lab File: BG024853.D
 Acq: 19 Nov 2016 9:18

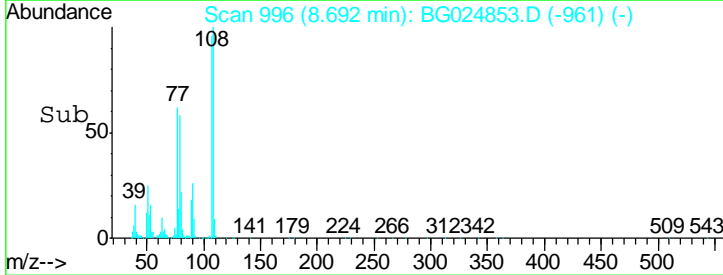
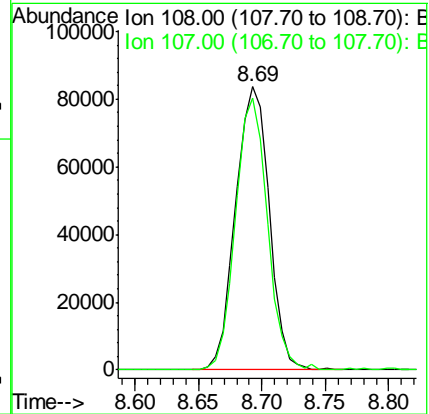
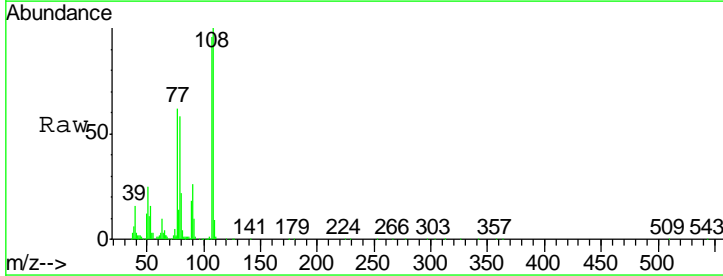
Instrument :
 BNA_G
 ClientSampleID :
 SSTD02019

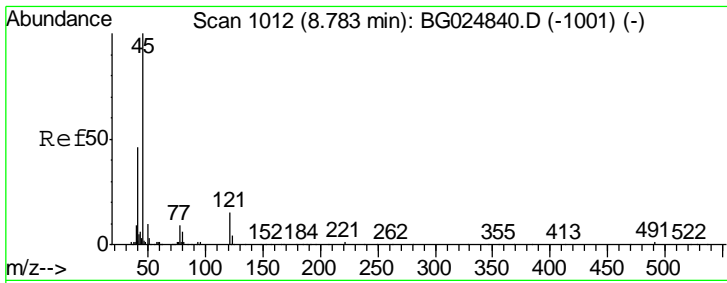
Tgt Ion	Resp	Lower	Upper
128	137352		
64	57.7	56.3	84.5
130	34.1	26.7	40.1



#11
 2-Methylphenol
 Concen: 20.74 ng/ul
 RT: 8.69 min Scan# 996
 Delta R.T. 0.00 min
 Lab File: BG024853.D
 Acq: 19 Nov 2016 9:18

Tgt Ion	Resp	Lower	Upper
108	153451		
107	95.9	76.7	115.1

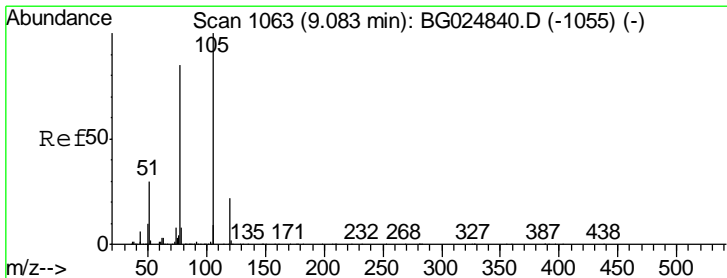
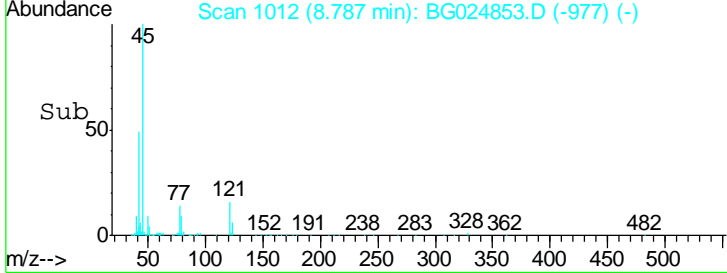
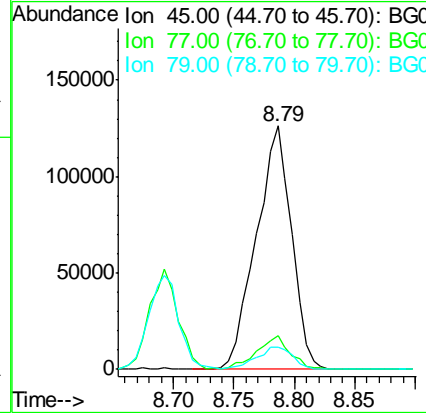
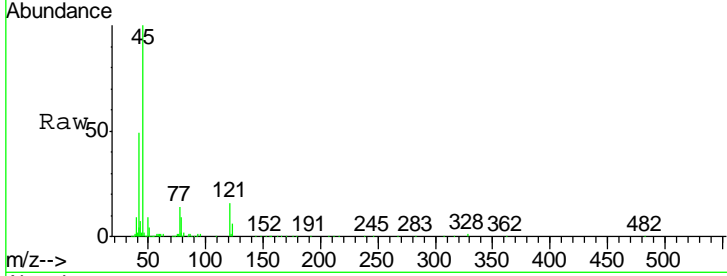




#12
 2,2'-oxybis(1-Chloropropane)
 Concen: 20.94 ng/ul
 RT: 8.79 min Scan# 1012
 Delta R.T. 0.00 min
 Lab File: BG024853.D
 Acq: 19 Nov 2016 9:18

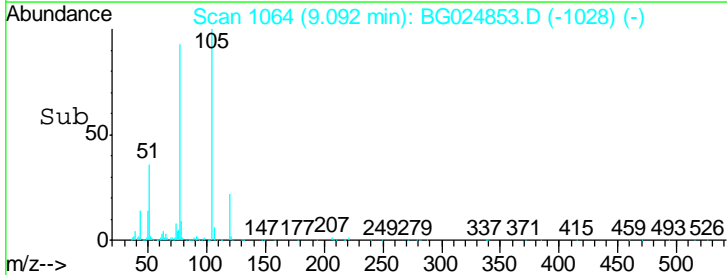
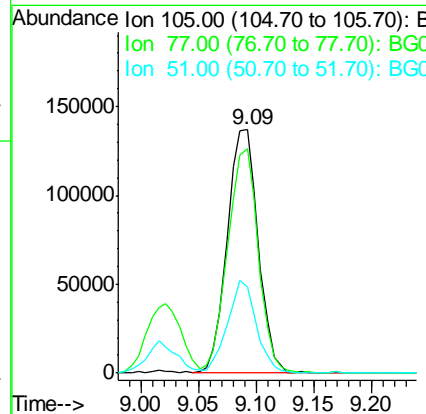
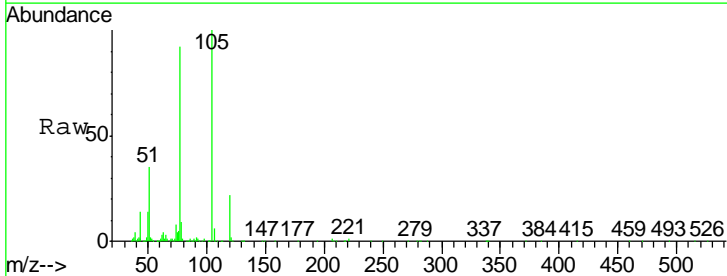
Instrument :
 BNA_G
 ClientSampled :
 SSTD02019

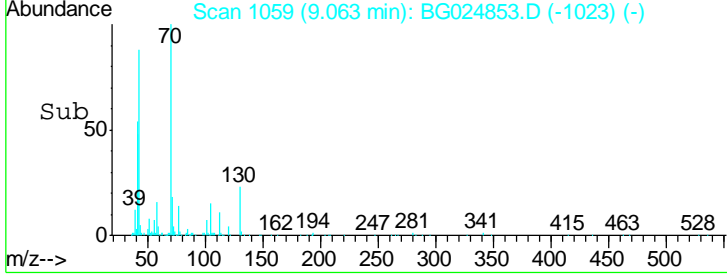
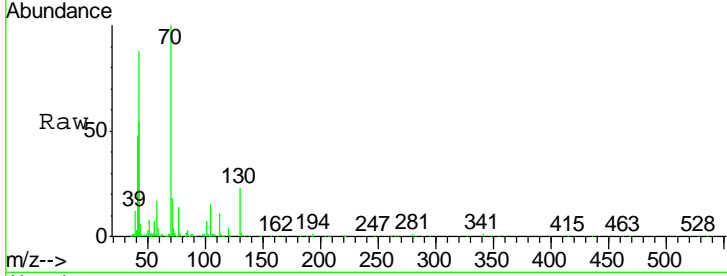
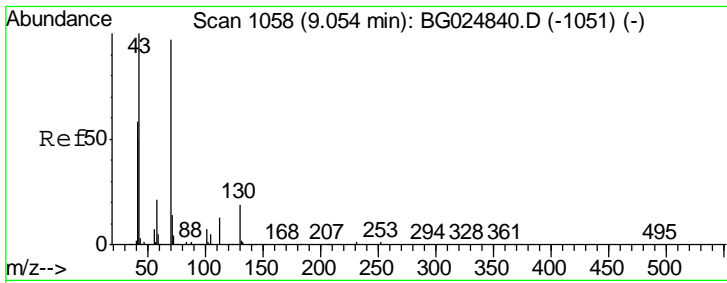
Tgt Ion	Resp	Lower	Upper
45	100		
77	13.9	10.0	15.0
79	9.2	7.3	10.9



#14
 Acetophenone
 Concen: 20.77 ng/ul
 RT: 9.09 min Scan# 1064
 Delta R.T. 0.01 min
 Lab File: BG024853.D
 Acq: 19 Nov 2016 9:18

Tgt Ion	Resp	Lower	Upper
105	100		
77	92.3	76.0	114.0
51	35.5	34.8	52.2

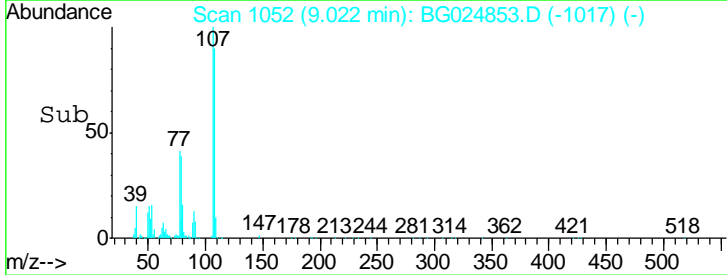
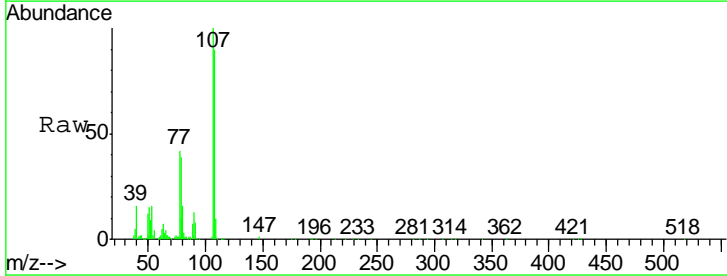
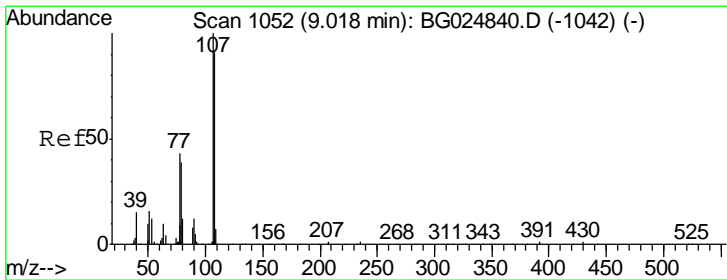
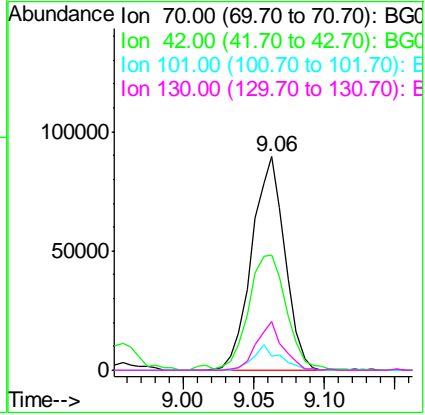




#15
 N-Nitroso-di-n-propylamine
 Concen: 21.13 ng/ul
 RT: 9.06 min Scan# 1059
 Delta R.T. 0.01 min
 Lab File: BG024853.D
 Acq: 19 Nov 2016 9:18

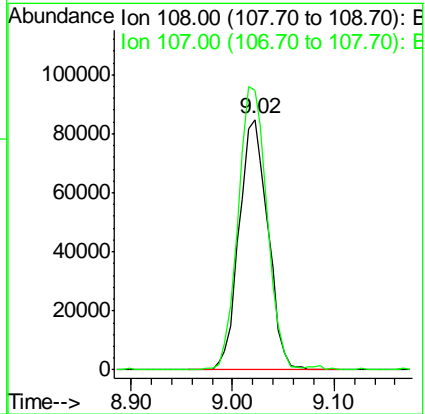
Instrument :
 BNA_G
ClientSampled :
 SST02019

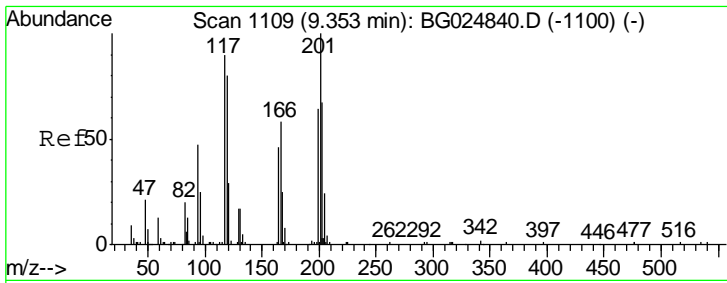
Tgt Ion	Resp	Lower	Upper
70	100		
42	54.2	59.0	88.6#
101	6.5	6.6	9.8#
130	22.8	15.6	23.4



#16
 4-Methylphenol
 Concen: 20.89 ng/ul
 RT: 9.02 min Scan# 1052
 Delta R.T. 0.00 min
 Lab File: BG024853.D
 Acq: 19 Nov 2016 9:18

Tgt Ion	Resp	Lower	Upper
108	100		
107	111.4	91.7	137.5

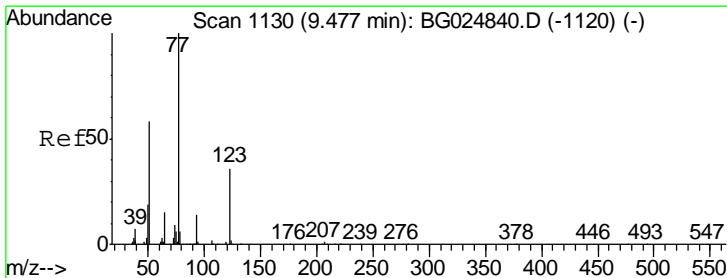
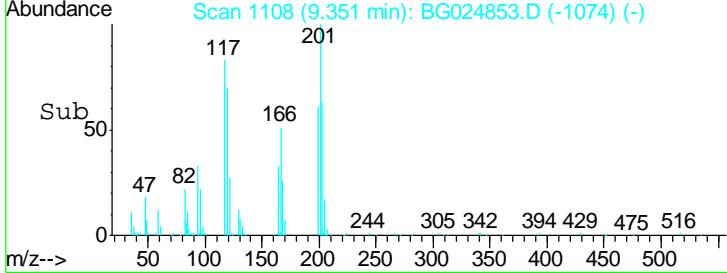
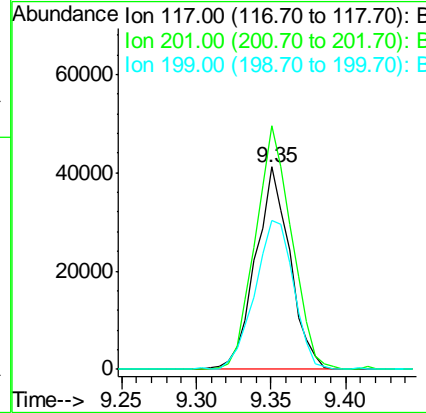
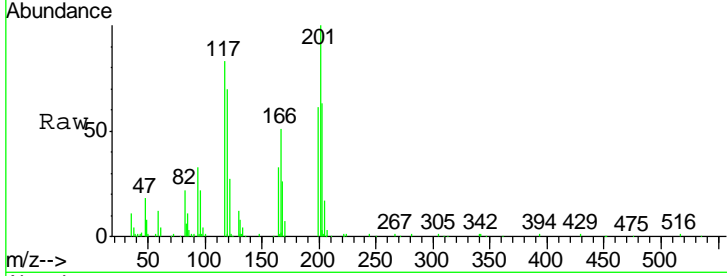




#17
 Hexachloroethane
 Concen: 21.26 ng/ul
 RT: 9.35 min Scan# 1108
 Delta R.T. -0.00 min
 Lab File: BG024853.D
 Acq: 19 Nov 2016 9:18

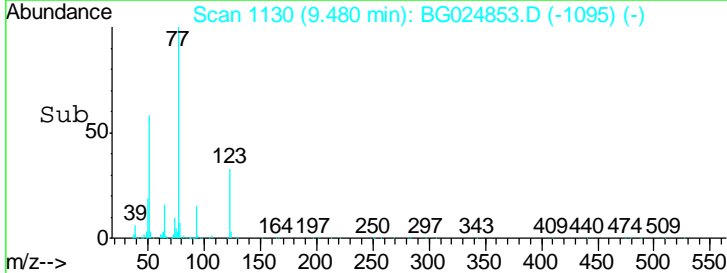
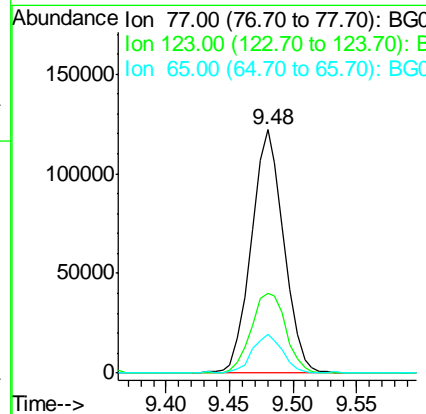
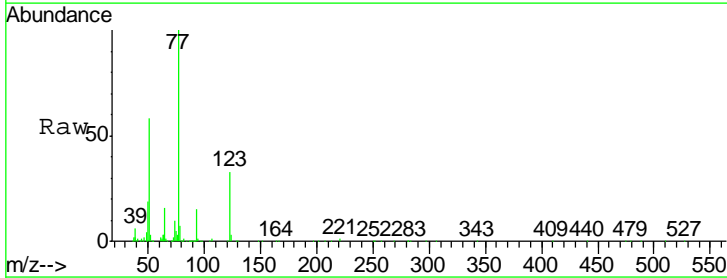
Instrument :
 BNA_G
 ClientSampled :
 SST02019

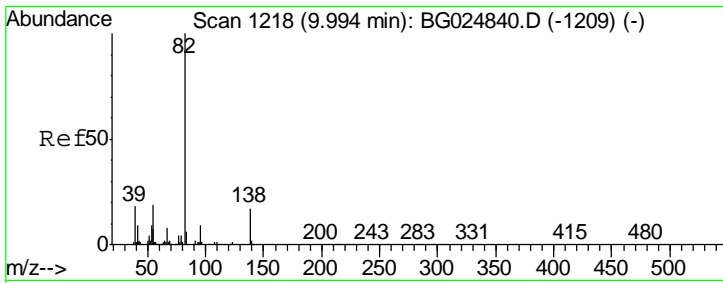
Tgt Ion	Resp	Lower	Upper
117	65244		
117	100		
201	120.4	91.9	137.9
199	73.7	64.3	96.5



#20
 Nitrobenzene
 Concen: 20.03 ng/ul
 RT: 9.48 min Scan# 1130
 Delta R.T. 0.00 min
 Lab File: BG024853.D
 Acq: 19 Nov 2016 9:18

Tgt Ion	Resp	Lower	Upper
77	218034		
77	100		
123	33.0	27.4	41.0
65	16.1	13.3	19.9

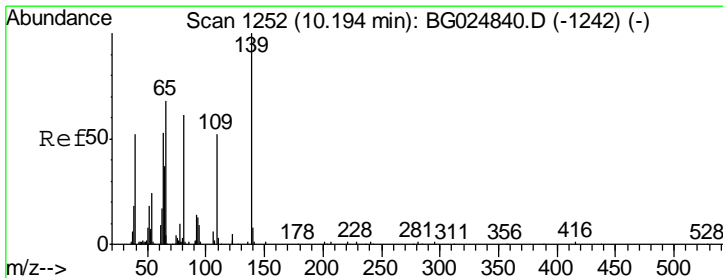
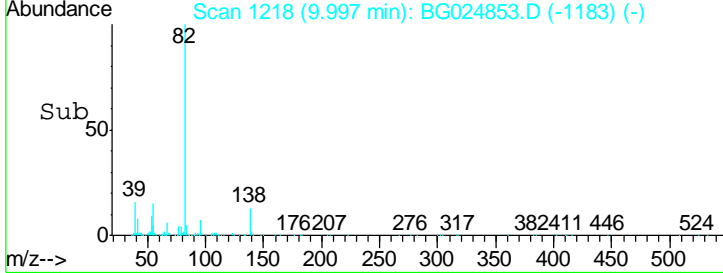
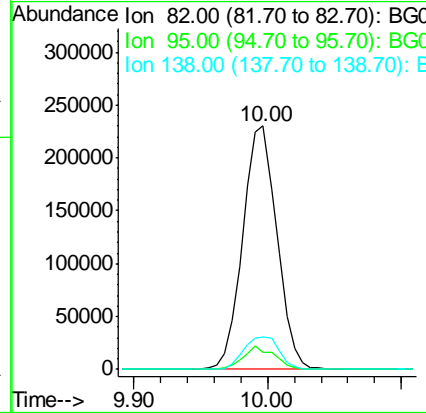
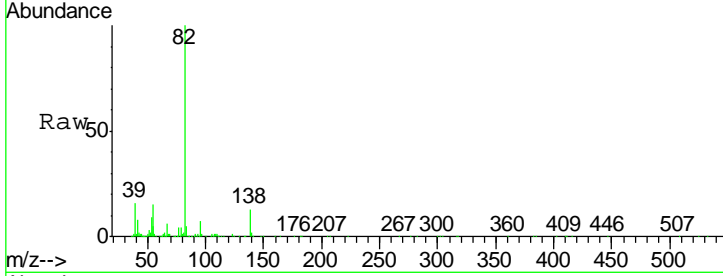




#21
 Isophorone
 Concen: 19.98 ng/ul
 RT: 10.00 min Scan# 1218
 Delta R.T. 0.00 min
 Lab File: BG024853.D
 Acq: 19 Nov 2016 9:18

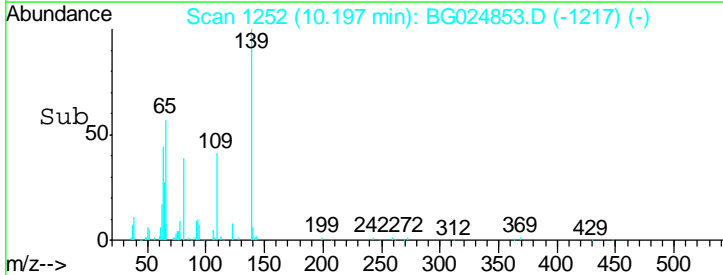
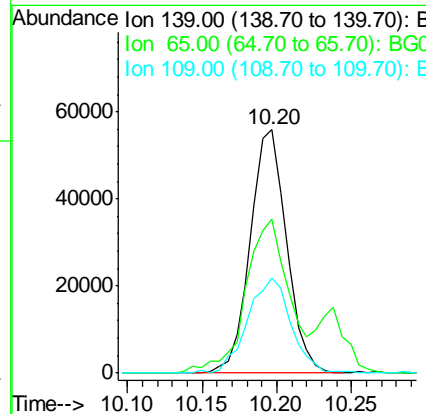
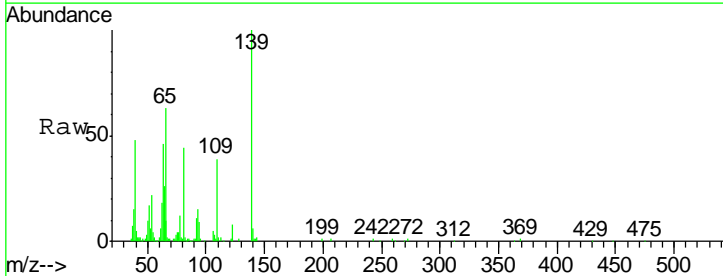
Instrument :
 BNA_G
 ClientSampled :
 SSTD02019

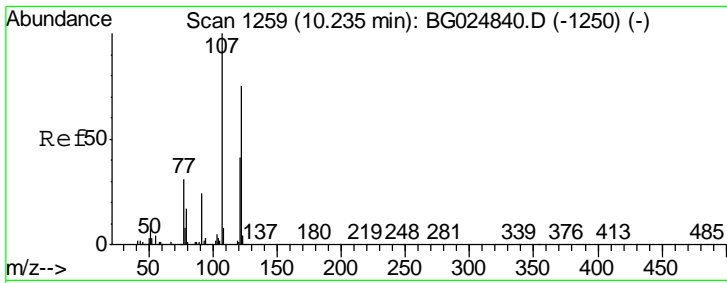
Tgt Ion	Resp	Lower	Upper
82	405555		
95	6.8	7.8	11.6#
138	13.4	12.2	18.2



#23
 2-Nitrophenol
 Concen: 21.22 ng/ul
 RT: 10.20 min Scan# 1252
 Delta R.T. 0.00 min
 Lab File: BG024853.D
 Acq: 19 Nov 2016 9:18

Tgt Ion	Resp	Lower	Upper
139	93813		
65	63.1	67.0	100.6#
109	39.2	39.6	59.4#

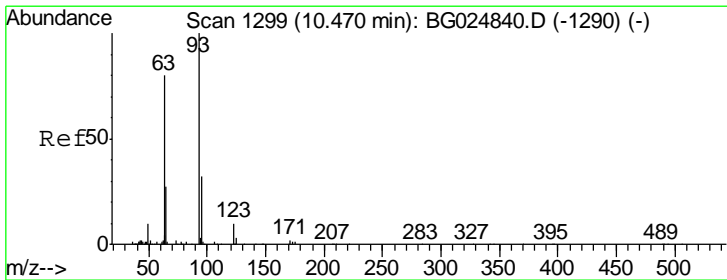
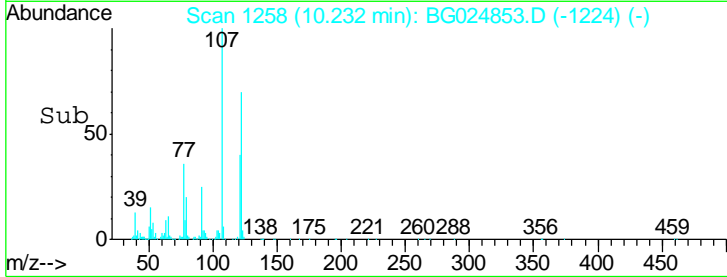
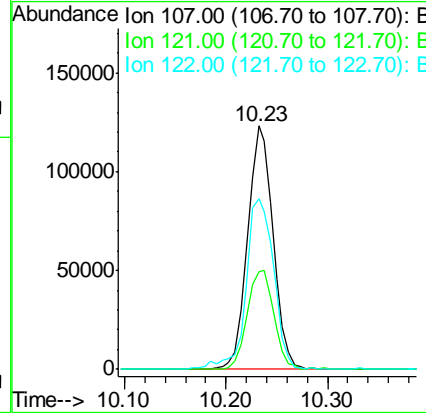
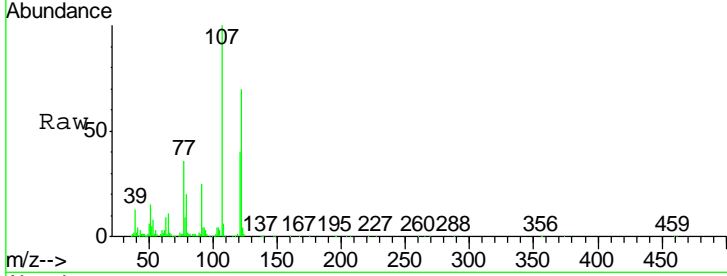




#24
 2,4-Dimethylphenol
 Concen: 20.34 ng/ul
 RT: 10.23 min Scan# 1258
 Delta R.T. -0.00 min
 Lab File: BG024853.D
 Acq: 19 Nov 2016 9:18

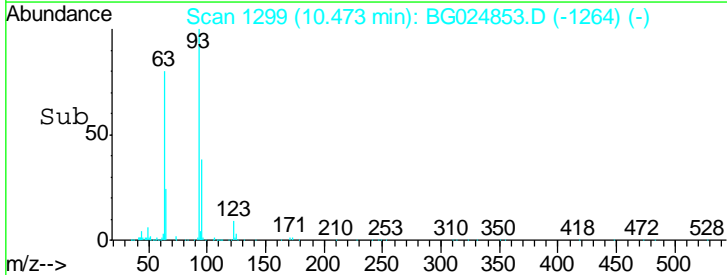
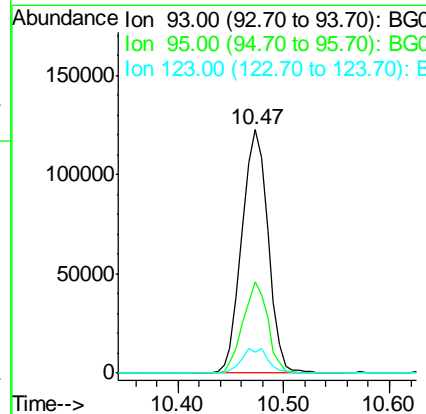
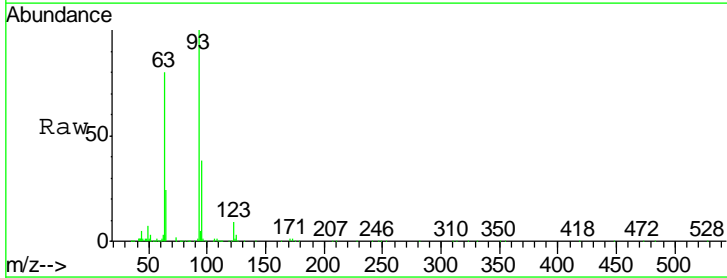
Instrument :
 BNA_G
 ClientSampled :
 SSTD02019

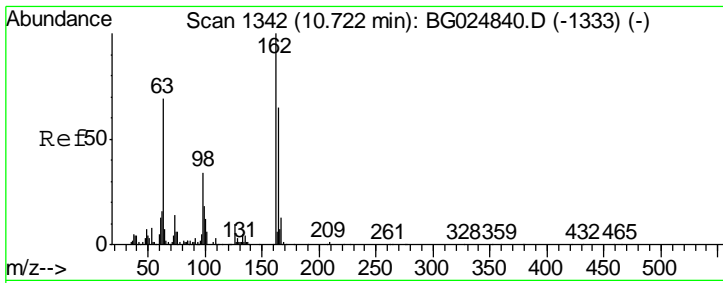
Tgt Ion	Resp	Lower	Upper
107	213610		
121	40.2	32.3	48.5
122	69.9	61.2	91.8



#25
 Bis(2-Chloroethoxy)methane
 Concen: 19.70 ng/ul
 RT: 10.47 min Scan# 1299
 Delta R.T. 0.00 min
 Lab File: BG024853.D
 Acq: 19 Nov 2016 9:18

Tgt Ion	Resp	Lower	Upper
93	210013		
95	37.6	23.4	35.0#
123	8.7	7.8	11.6

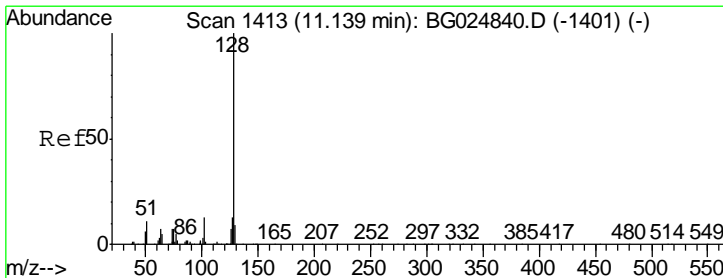
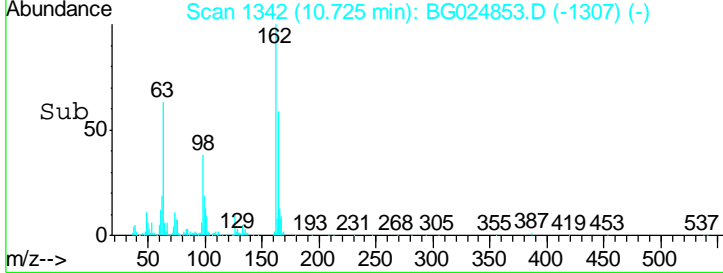
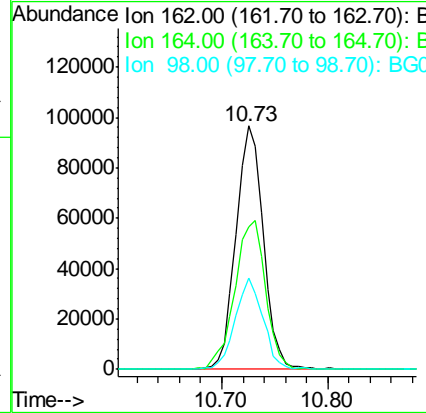
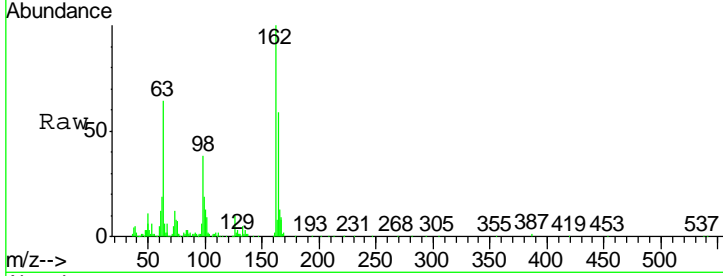




#27
 2,4-Dichlorophenol
 Concen: 20.67 ng/ul
 RT: 10.73 min Scan# 1342
 Delta R.T. 0.00 min
 Lab File: BG024853.D
 Acq: 19 Nov 2016 9:18

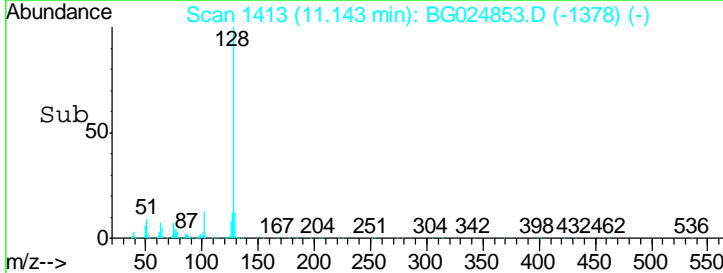
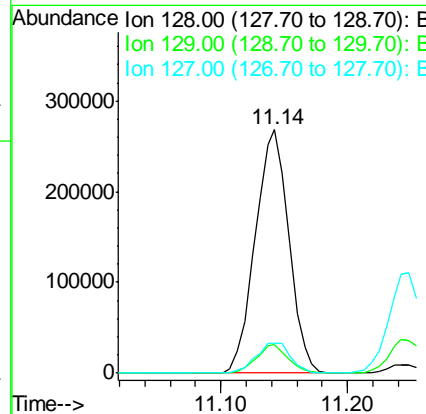
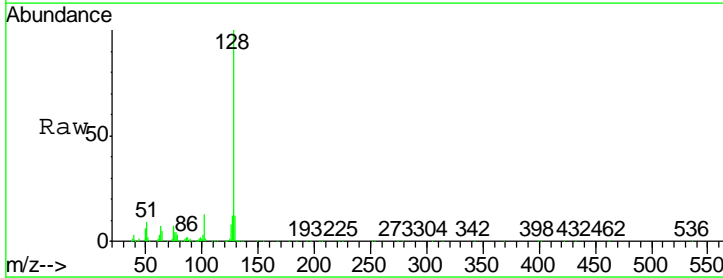
Instrument :
 BNA_G
 ClientSampleId :
 SSTD02019

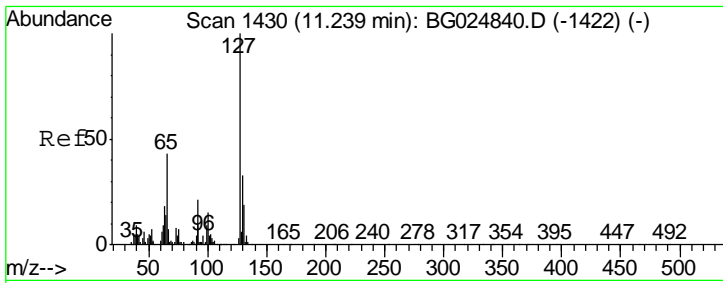
Tgt Ion	Resp	Lower	Upper
162	172515		
164	58.6	50.8	76.2
98	37.5	32.1	48.1



#28
 Naphthalene
 Concen: 21.31 ng/ul
 RT: 11.14 min Scan# 1413
 Delta R.T. 0.00 min
 Lab File: BG024853.D
 Acq: 19 Nov 2016 9:18

Tgt Ion	Resp	Lower	Upper
128	494927		
129	11.5	9.4	14.2
127	12.4	10.3	15.5

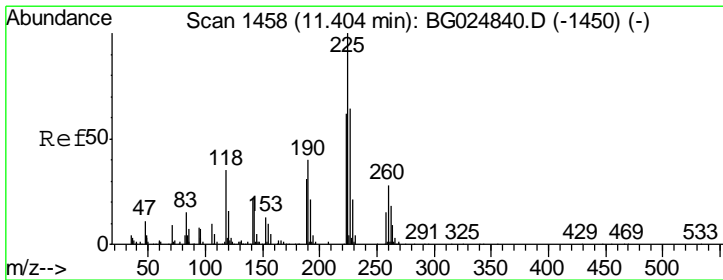
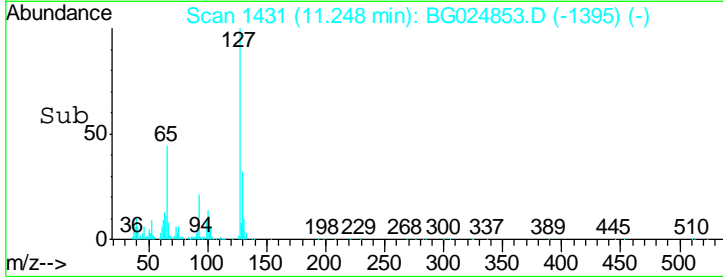
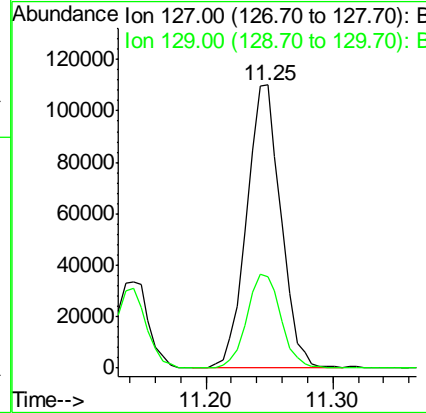
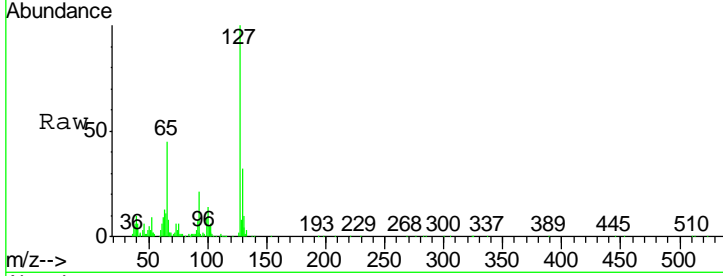




#30
 4-Chloroaniline
 Concen: 22.02 ng/ul
 RT: 11.25 min Scan# 1431
 Delta R.T. 0.01 min
 Lab File: BG024853.D
 Acq: 19 Nov 2016 9:18

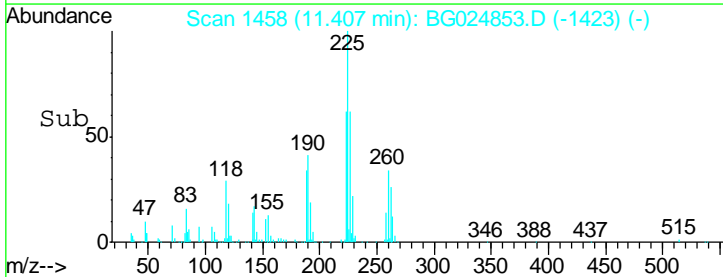
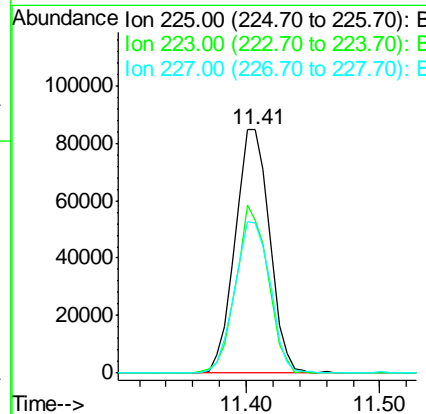
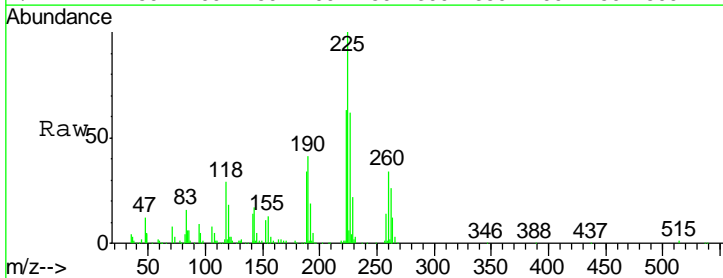
Instrument :
 BNA_G
 ClientSampled :
 SSTD02019

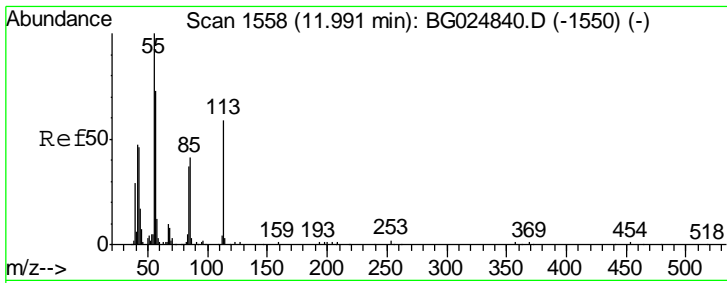
Tgt Ion: 127 Resp: 206703
 Ion Ratio Lower Upper
 127 100
 129 32.5 28.9 43.3



#31
 Hexachlorobutadiene
 Concen: 20.75 ng/ul
 RT: 11.41 min Scan# 1458
 Delta R.T. 0.00 min
 Lab File: BG024853.D
 Acq: 19 Nov 2016 9:18

Tgt Ion: 225 Resp: 152038
 Ion Ratio Lower Upper
 225 100
 223 62.6 45.9 68.9
 227 61.6 44.7 67.1

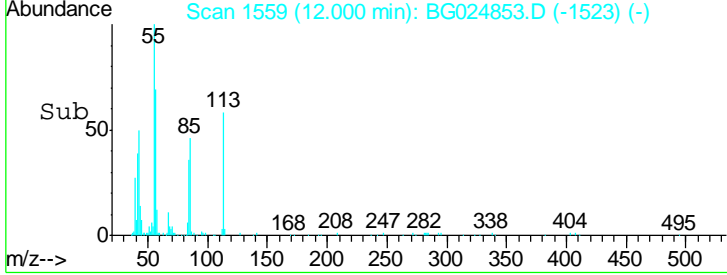
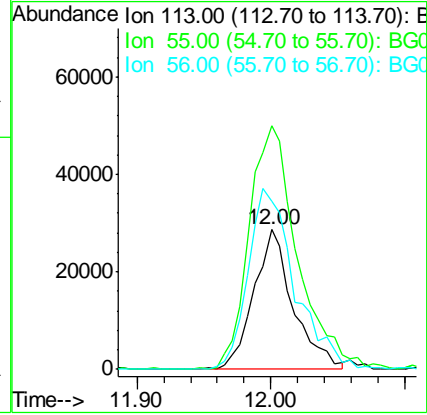
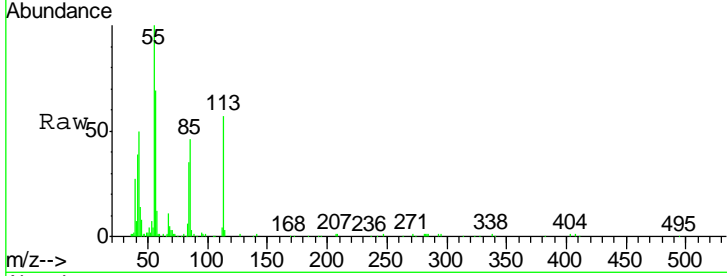




#32
 Caprolactam
 Concen: 17.77 ng/ul
 RT: 12.00 min Scan# 1559
 Delta R.T. 0.01 min
 Lab File: BG024853.D
 Acq: 19 Nov 2016 9:18

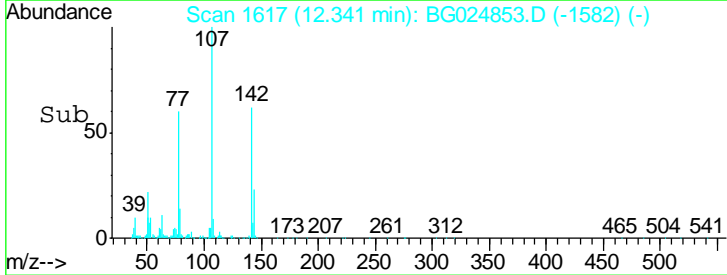
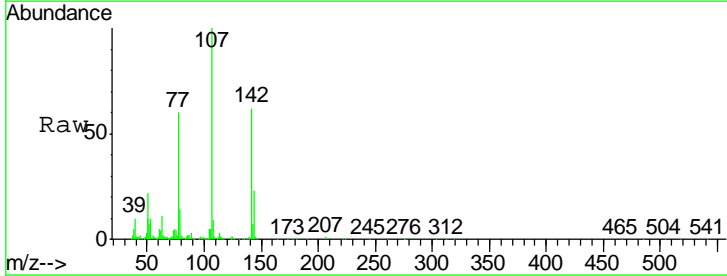
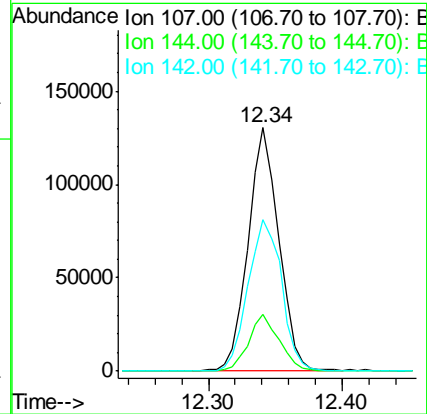
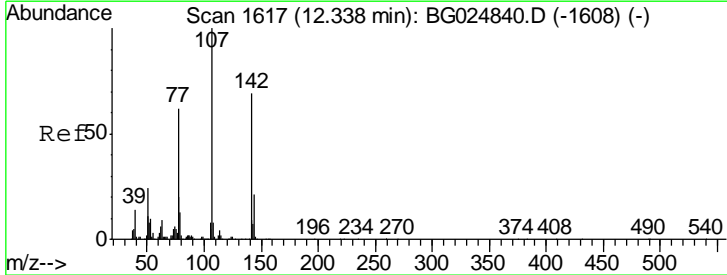
Instrument :
 BNA_G
 ClientSampleId :
 SSTD02019

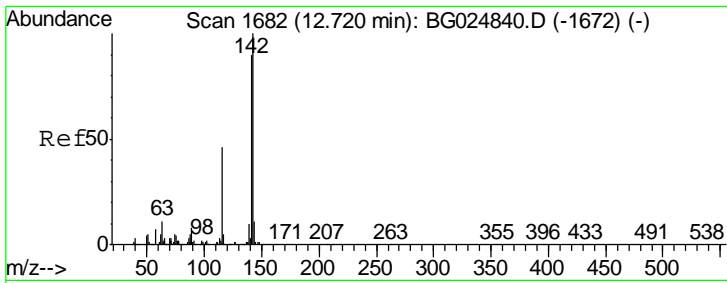
Tgt Ion	Resp	Lower	Upper
113	58471		
113	100		
55	174.5	168.6	252.8
56	120.6	128.5	192.7#



#33
 4-Chloro-3-methylphenol
 Concen: 20.43 ng/ul
 RT: 12.34 min Scan# 1617
 Delta R.T. 0.00 min
 Lab File: BG024853.D
 Acq: 19 Nov 2016 9:18

Tgt Ion	Resp	Lower	Upper
107	206483		
107	100		
144	23.2	18.2	27.4
142	62.1	55.0	82.4

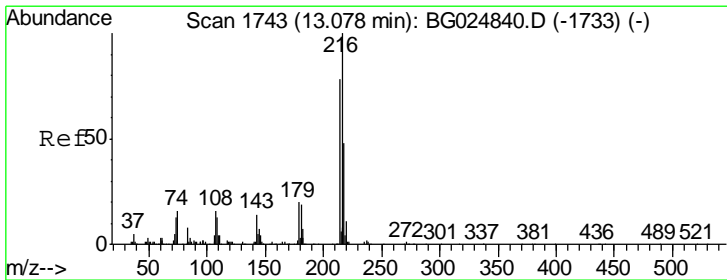
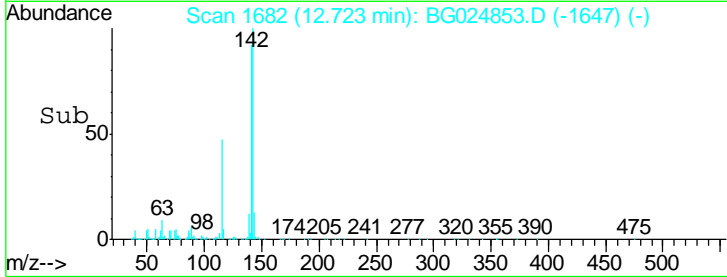
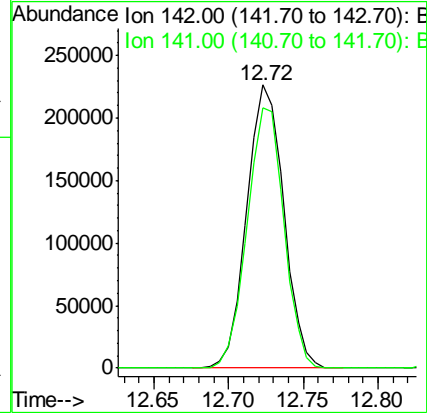
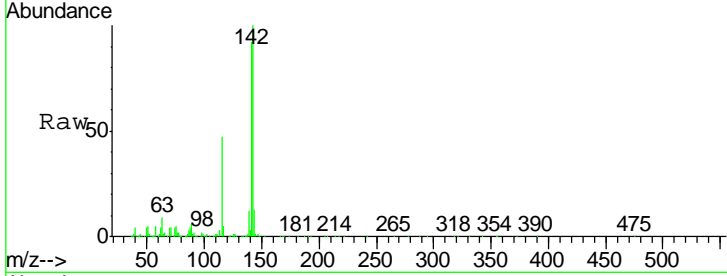




#34
 2-Methylnaphthalene
 Concen: 21.21 ng/ul
 RT: 12.72 min Scan# 1682
 Delta R.T. 0.00 min
 Lab File: BG024853.D
 Acq: 19 Nov 2016 9:18

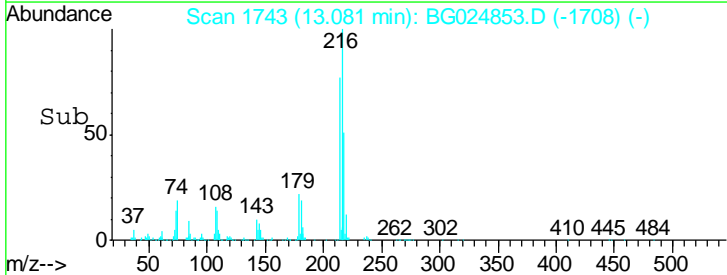
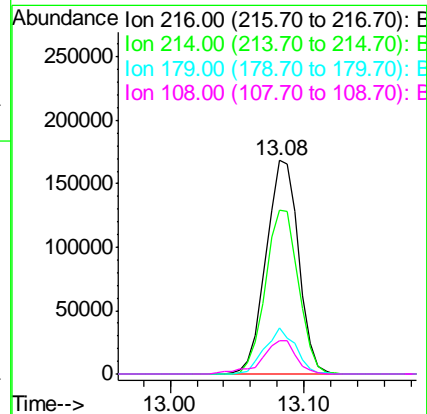
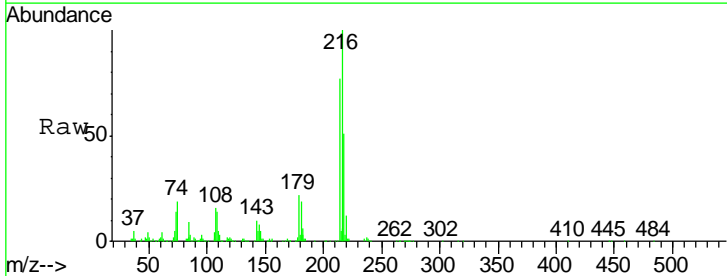
Instrument :
 BNA_G
 ClientSampled :
 SST02019

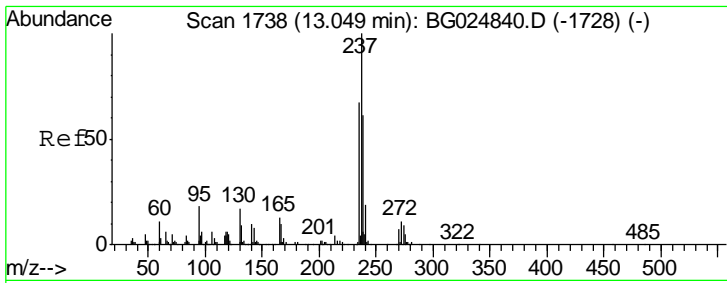
Tgt Ion:142 Resp: 387637
 Ion Ratio Lower Upper
 142 100
 141 92.1 68.6 102.8



#36
 1,2,4,5-Tetrachlorobenzene
 Concen: 22.76 ng/ul
 RT: 13.08 min Scan# 1743
 Delta R.T. 0.00 min
 Lab File: BG024853.D
 Acq: 19 Nov 2016 9:18

Tgt Ion:216 Resp: 284254
 Ion Ratio Lower Upper
 216 100
 214 76.9 67.0 100.6
 179 21.9 18.1 27.1
 108 15.6 14.1 21.1

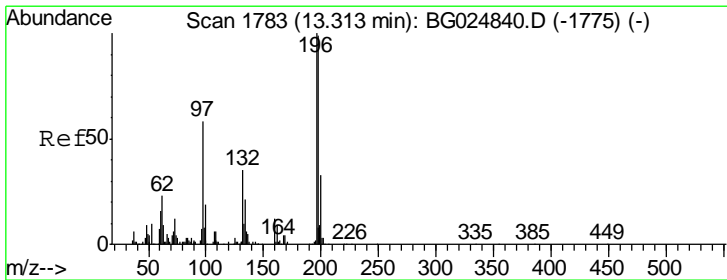
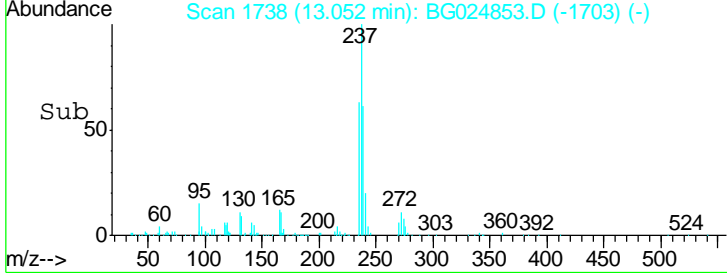
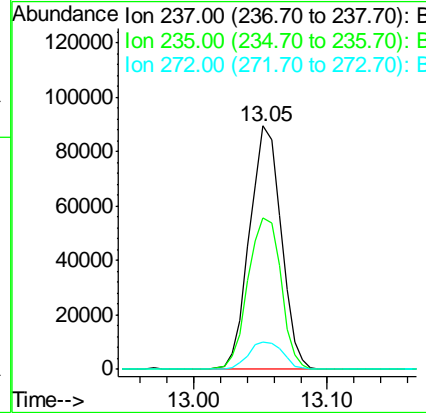
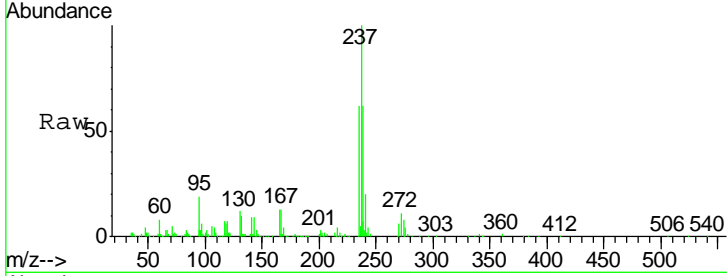




#37
 Hexachlorocyclopentadiene
 Concen: 18.03 ng/ul
 RT: 13.05 min Scan# 1738
 Delta R.T. 0.00 min
 Lab File: BG024853.D
 Acq: 19 Nov 2016 9:18

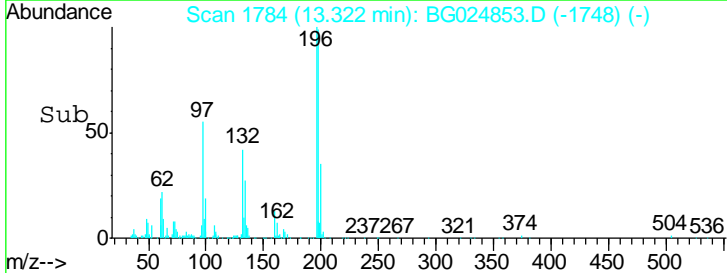
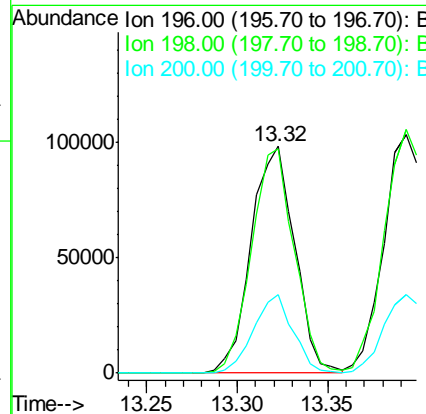
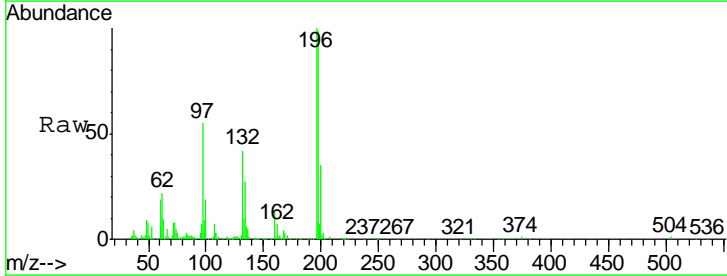
Instrument :
 BNA_G
 ClientSampleId :
 SSTD02019

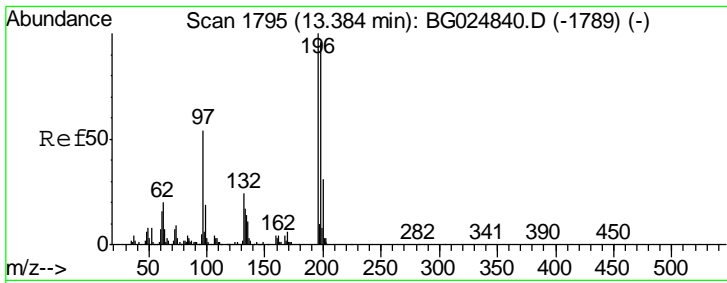
Tgt Ion	Resp	Lower	Upper
237	145085		
235	62.2	50.2	75.4
272	11.2	10.6	16.0



#38
 2,4,6-Trichlorophenol
 Concen: 21.66 ng/ul
 RT: 13.32 min Scan# 1784
 Delta R.T. 0.01 min
 Lab File: BG024853.D
 Acq: 19 Nov 2016 9:18

Tgt Ion	Resp	Lower	Upper
196	164561		
198	98.9	71.4	107.2
200	34.9	24.6	37.0

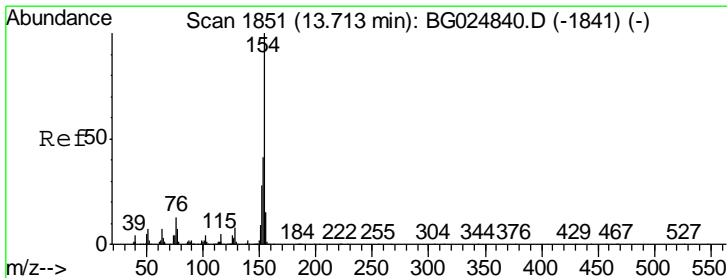
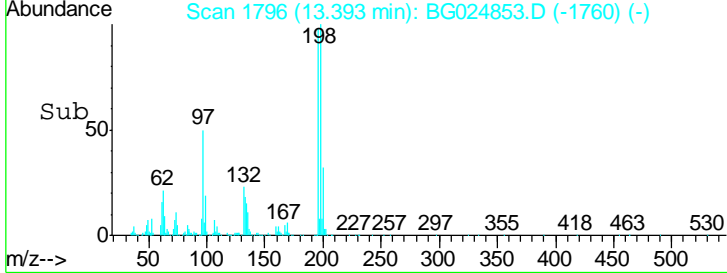
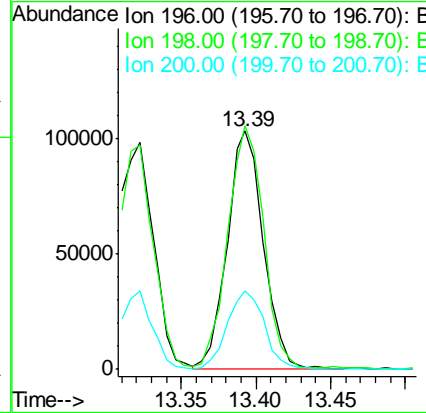
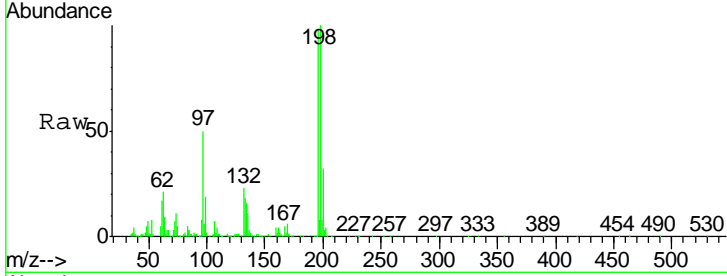




#39
 2,4,5-Trichlorophenol
 Concen: 21.22 ng/ul
 RT: 13.39 min Scan# 1796
 Delta R.T. 0.01 min
 Lab File: BG024853.D
 Acq: 19 Nov 2016 9:18

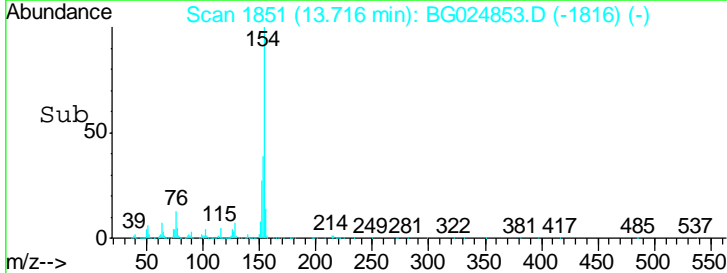
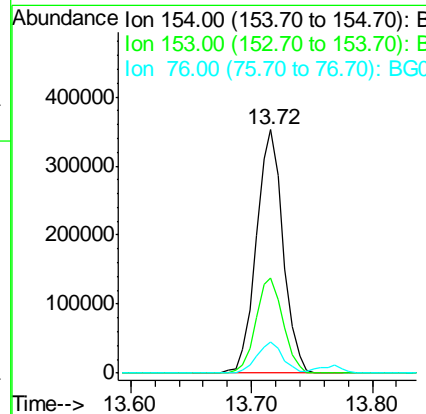
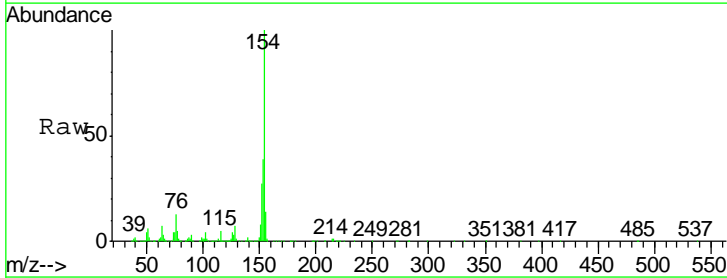
Instrument :
 BNA_G
 ClientSampled :
 SSTD02019

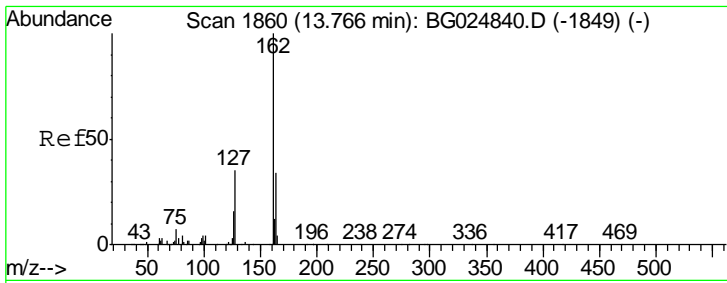
Tgt Ion	Resp	Lower	Upper
196	175178		
196	100		
198	102.3	78.6	118.0
200	32.8	27.3	40.9



#40
 1,1'-Biphenyl
 Concen: 21.86 ng/ul
 RT: 13.72 min Scan# 1851
 Delta R.T. 0.00 min
 Lab File: BG024853.D
 Acq: 19 Nov 2016 9:18

Tgt Ion	Resp	Lower	Upper
154	541405		
154	100		
153	39.2	32.2	48.2
76	12.8	9.6	14.4

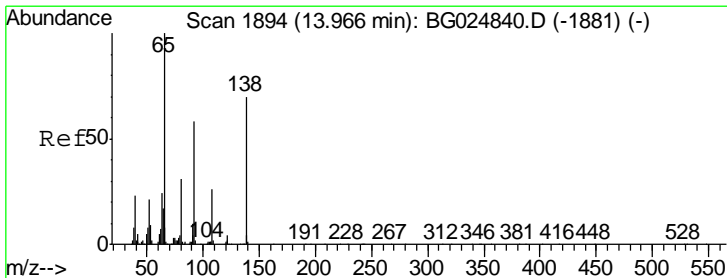
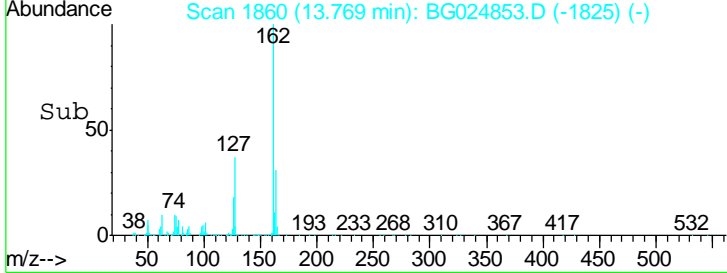
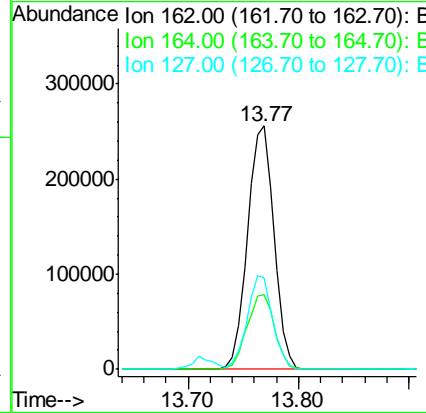
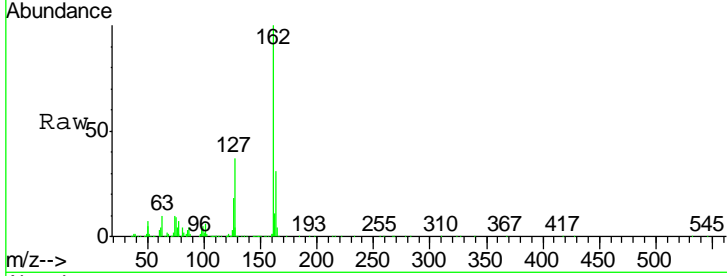




#41
 2-Chloronaphthalene
 Concen: 22.36 ng/ul
 RT: 13.77 min Scan# 1860
 Delta R.T. 0.00 min
 Lab File: BG024853.D
 Acq: 19 Nov 2016 9:18

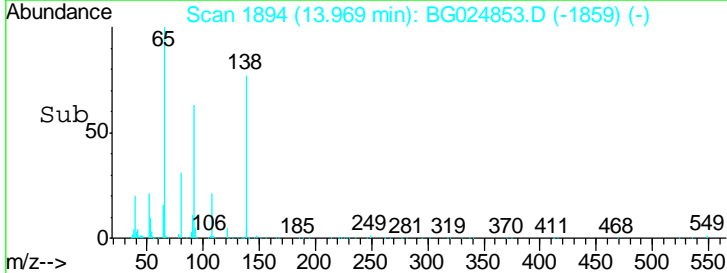
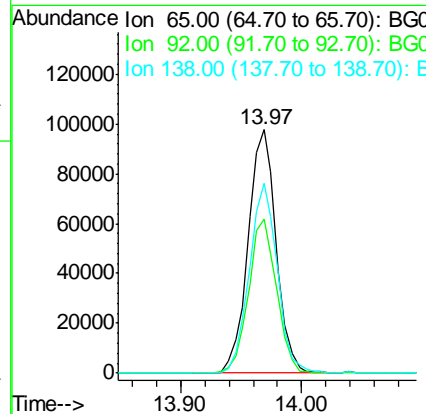
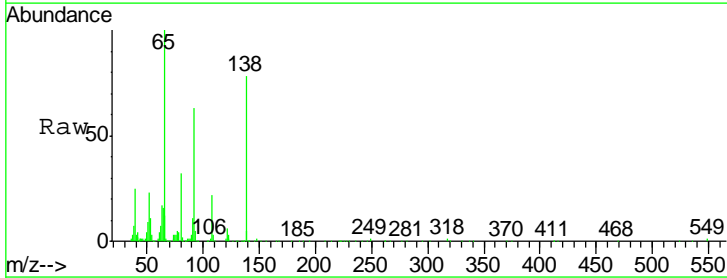
Instrument :
 BNA_G
 ClientSampled :
 SSTD02019

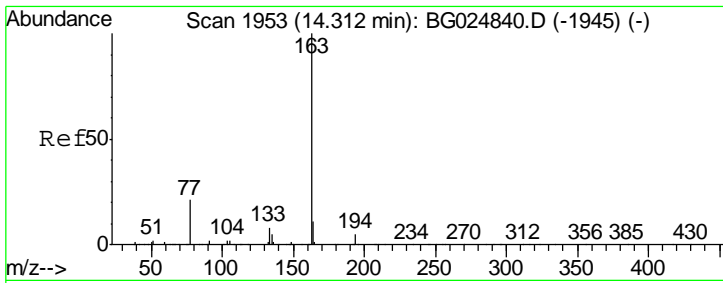
Tgt Ion	Resp	Lower	Upper
162	430264		
164	30.7	25.0	37.6
127	37.3	30.7	46.1



#42
 2-Nitroaniline
 Concen: 20.72 ng/ul
 RT: 13.97 min Scan# 1894
 Delta R.T. 0.00 min
 Lab File: BG024853.D
 Acq: 19 Nov 2016 9:18

Tgt Ion	Resp	Lower	Upper
65	158165		
92	63.2	50.9	76.3
138	77.9	61.8	92.6

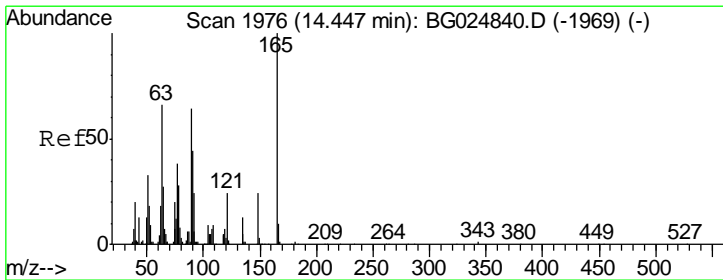
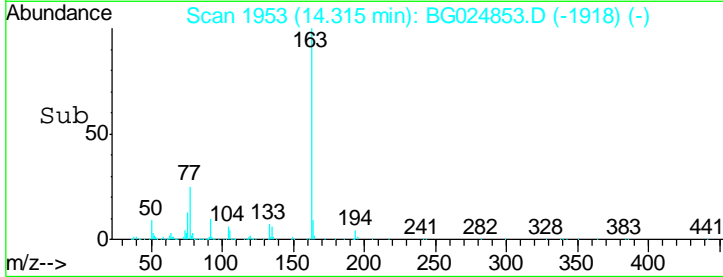
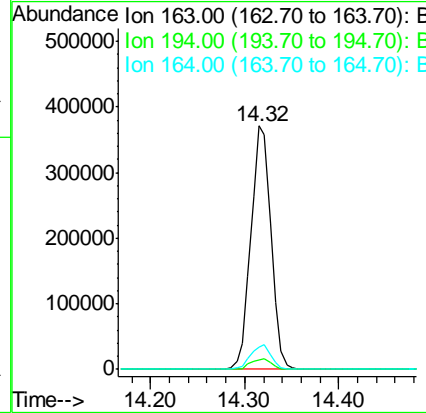
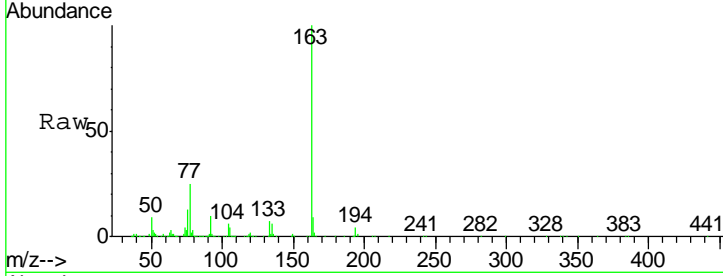




#44
 Dimethylphthalate
 Concen: 20.31 ng/ul
 RT: 14.32 min Scan# 1953
 Delta R.T. 0.00 min
 Lab File: BG024853.D
 Acq: 19 Nov 2016 9:18

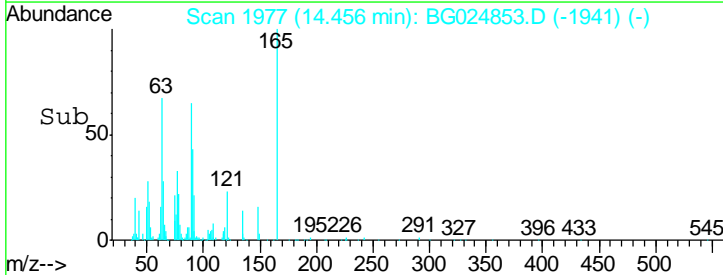
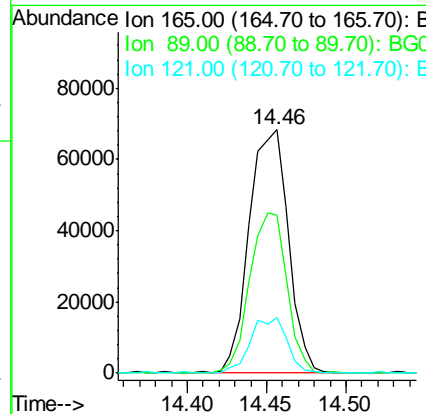
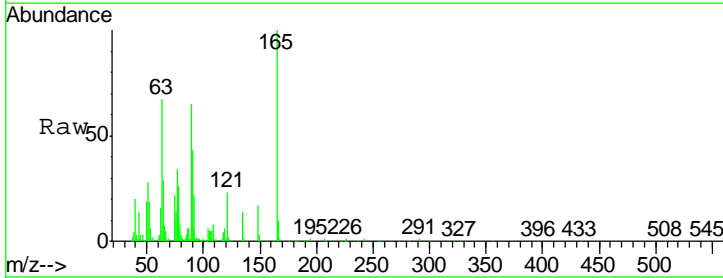
Instrument :
 BNA_G
 ClientSampleId :
 SST02019

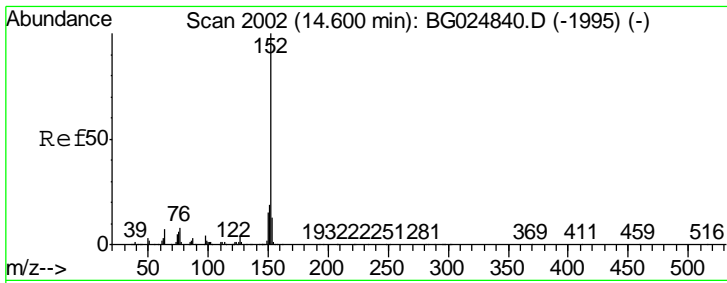
Tgt Ion	Resp	Lower	Upper
163	100		
194	3.7	3.4	5.0
164	9.0	9.0	13.4



#45
 2,6-Dinitrotoluene
 Concen: 20.82 ng/ul
 RT: 14.46 min Scan# 1977
 Delta R.T. 0.01 min
 Lab File: BG024853.D
 Acq: 19 Nov 2016 9:18

Tgt Ion	Resp	Lower	Upper
165	100		
89	64.9	52.9	79.3
121	22.8	22.2	33.4

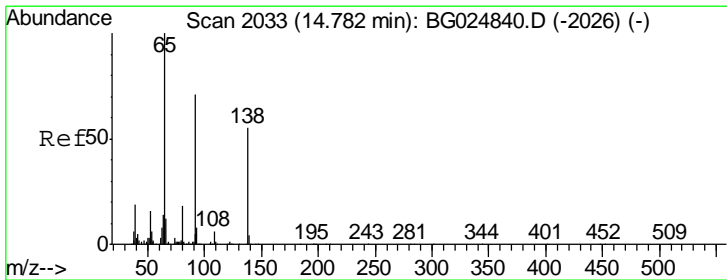
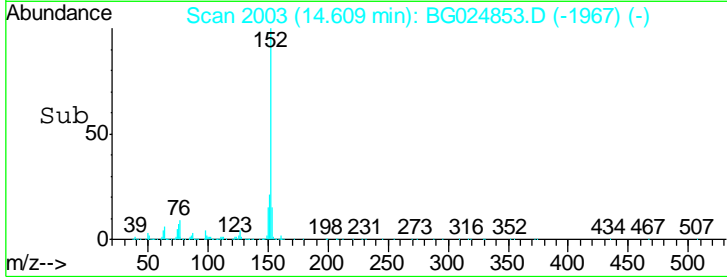
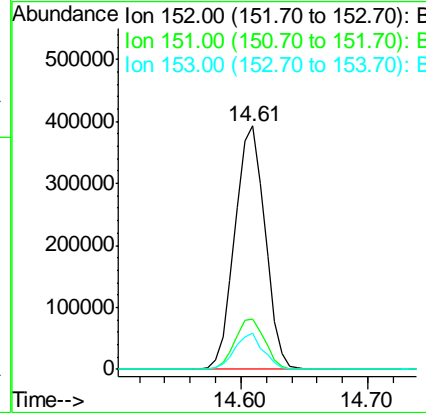
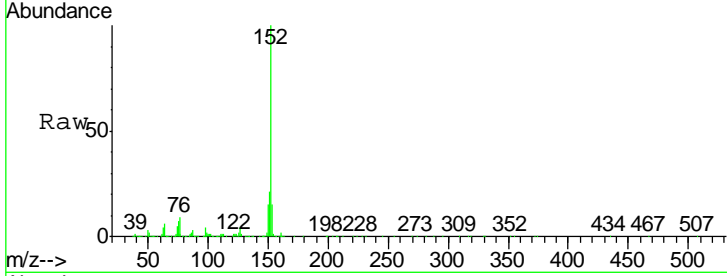




#47
 Acenaphthylene
 Concen: 21.80 ng/ul
 RT: 14.61 min Scan# 2003
 Delta R.T. 0.01 min
 Lab File: BG024853.D
 Acq: 19 Nov 2016 9:18

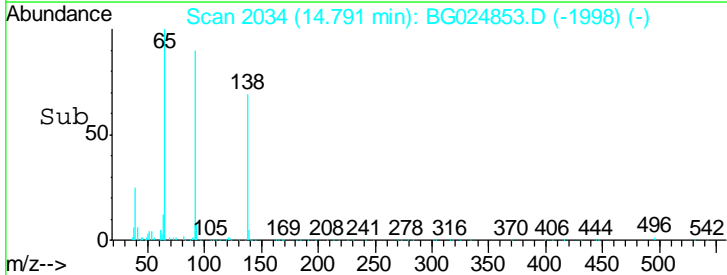
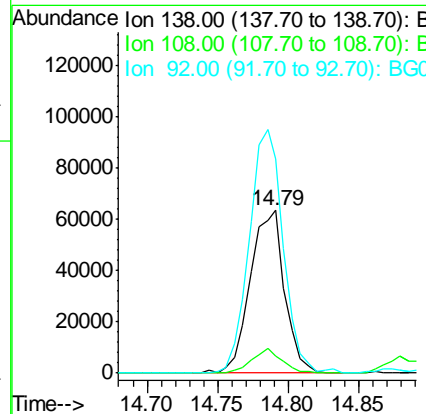
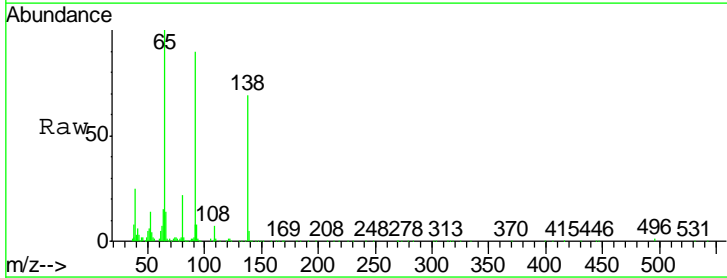
Instrument :
 BNA_G
 ClientSampled :
 SST02019

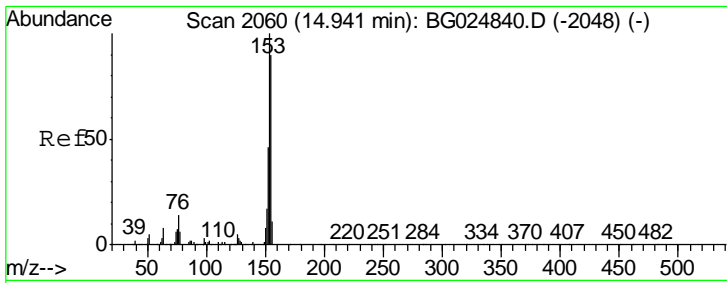
Tgt Ion	Resp	Lower	Upper
152	100		
151	20.6	16.7	25.1
153	15.0	11.4	17.2



#48
 3-Nitroaniline
 Concen: 20.70 ng/ul
 RT: 14.79 min Scan# 2034
 Delta R.T. 0.01 min
 Lab File: BG024853.D
 Acq: 19 Nov 2016 9:18

Tgt Ion	Resp	Lower	Upper
138	100		
108	10.5	6.3	9.5#
92	131.4	106.4	159.6

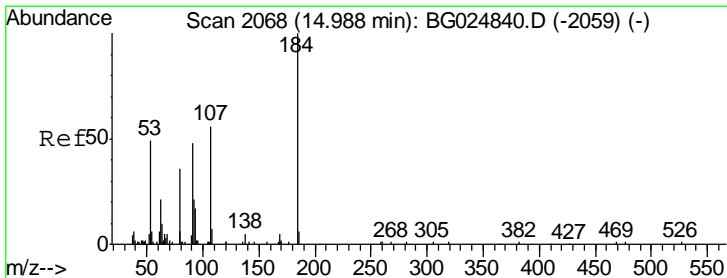
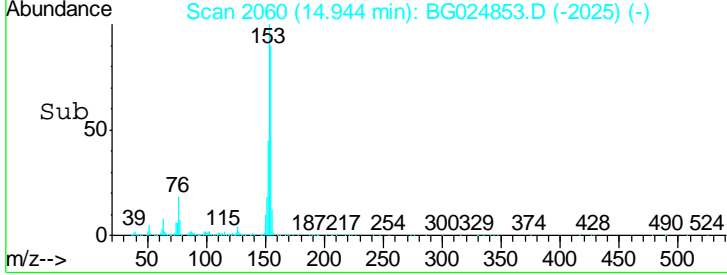
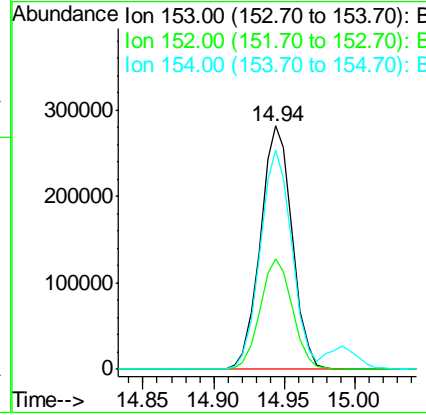
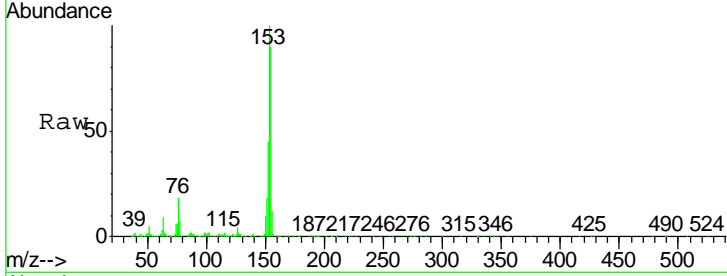




#49
 Acenaphthene
 Concen: 21.22 ng/ul
 RT: 14.94 min Scan# 2060
 Delta R.T. 0.00 min
 Lab File: BG024853.D
 Acq: 19 Nov 2016 9:18

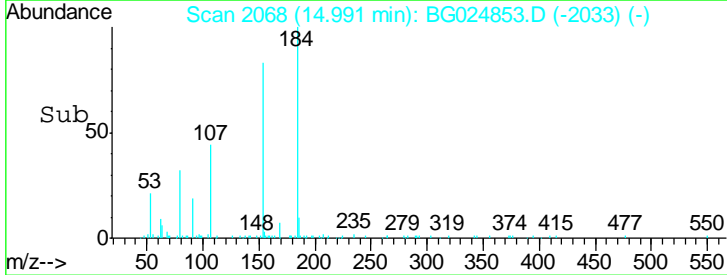
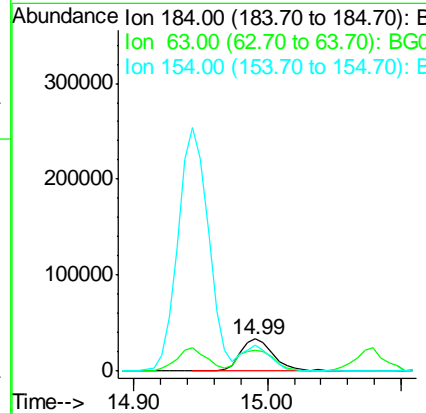
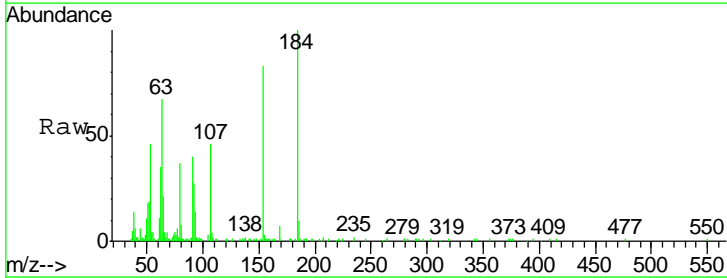
Instrument :
 BNA_G
 ClientSampled :
 SSTD02019

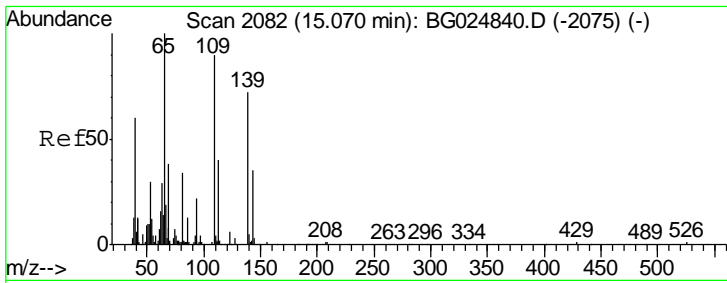
Tgt Ion	Resp	Lower	Upper
153	444557		
152	45.3	36.5	54.7
154	90.1	72.3	108.5



#50
 2,4-Dinitrophenol
 Concen: 14.20 ng/ul
 RT: 14.99 min Scan# 2068
 Delta R.T. 0.00 min
 Lab File: BG024853.D
 Acq: 19 Nov 2016 9:18

Tgt Ion	Resp	Lower	Upper
184	57502		
63	66.6	65.1	97.7
154	83.2	68.2	102.4

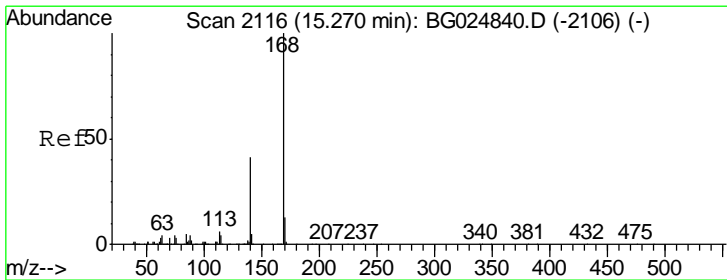
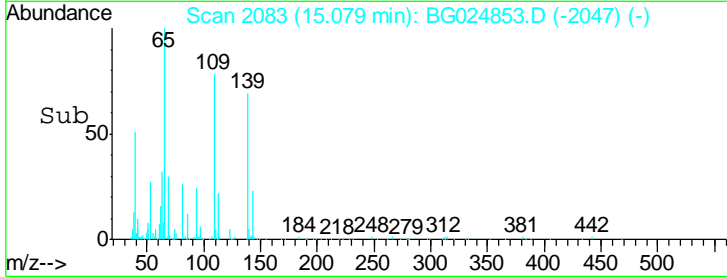
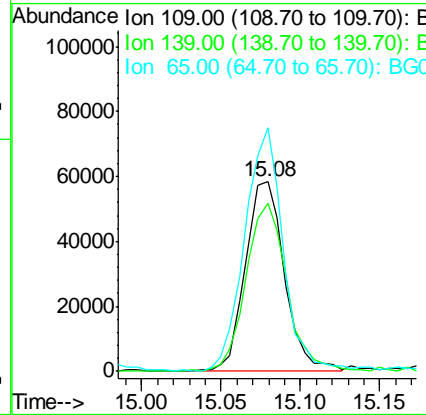
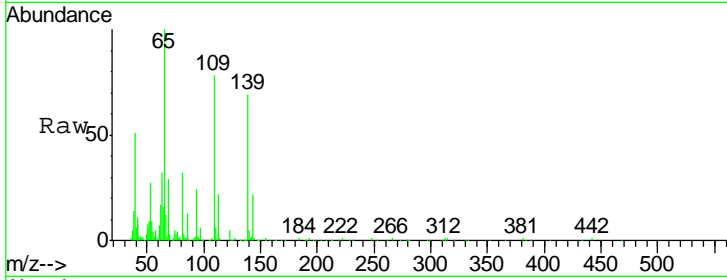




#52
 4-Nitrophenol
 Concen: 16.80 ng/ul
 RT: 15.08 min Scan# 2083
 Delta R.T. 0.01 min
 Lab File: BG024853.D
 Acq: 19 Nov 2016 9:18

Instrument :
 BNA_G
 ClientSampled :
 SSTD02019

Tgt Ion	Resp	Lower	Upper
109	100458		
109	100		
139	88.3	62.6	93.8
65	128.4	90.4	135.6



#53
 Dibenzofuran
 Concen: 21.00 ng/ul
 RT: 15.27 min Scan# 2116
 Delta R.T. 0.00 min
 Lab File: BG024853.D
 Acq: 19 Nov 2016 9:18

Tgt Ion	Resp	Lower	Upper
168	673106		
168	100		
139	40.7	33.8	50.8

