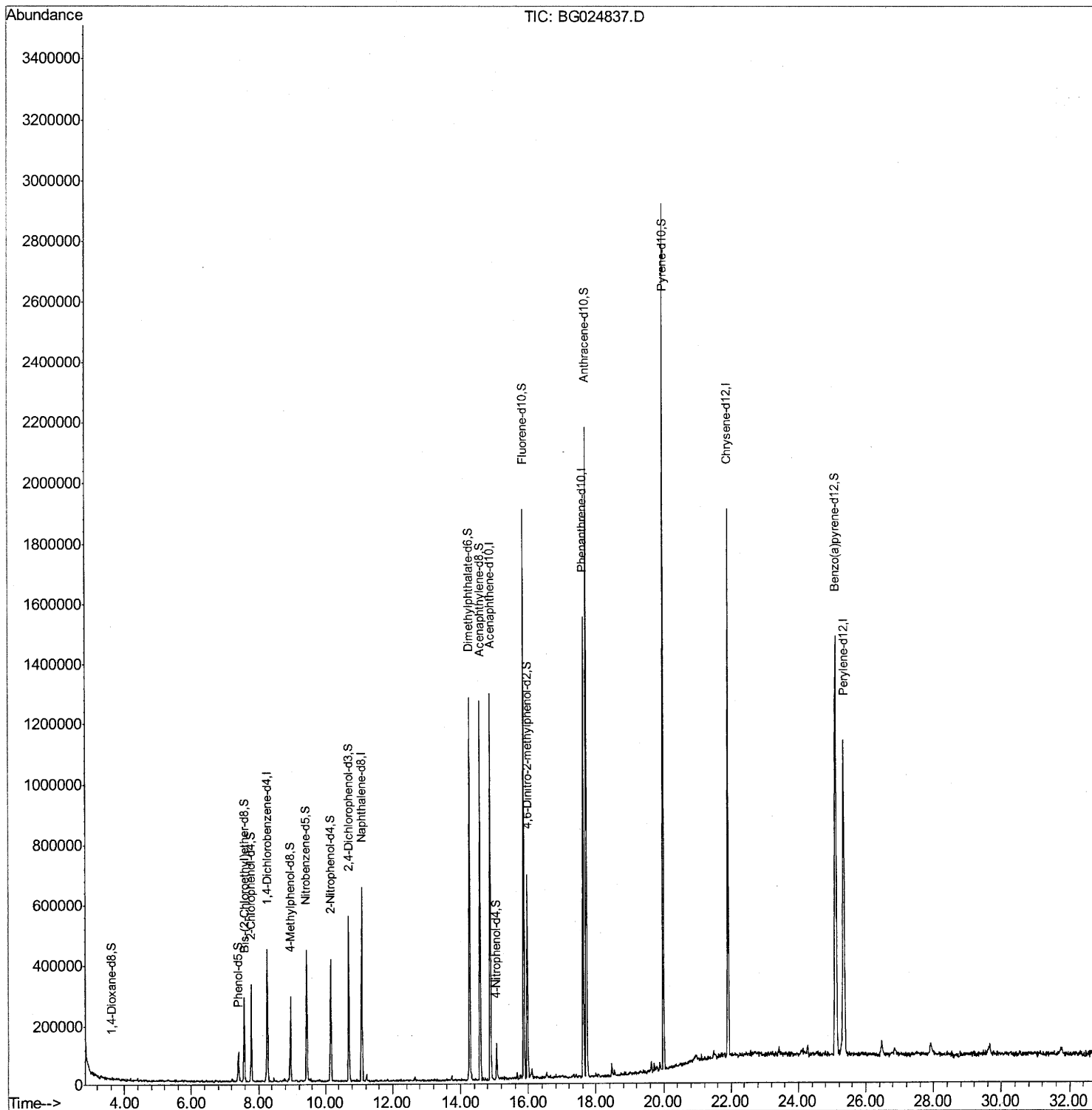


Data Path : Z:\HPCHEM1\BNA\_G\DATA\BG111816\  
 Data File : BG024837.D  
 Acq On : 18 Nov 2016 22:58  
 Operator : UM/SJ  
 Sample : H5699-15  
 Misc :  
 ALS Vial : 12 Sample Multiplier: 1

Instrument :  
 BNA\_G  
 Client Sampled :  
 A4WE0

Manual Integrations  
 APPROVED  
 sohil  
 11/21/2016 3:41:50 PM

Quant Time: Nov 19 00:43:58 2016  
 Quant Method : Z:\HPCHEM1\BNA\_G\METHODS\SOM02.2-EPA-BG111416.M  
 Quant Title : SVOA CALIBRATION  
 QLast Update : Sat Nov 19 00:07:29 2016  
 Response via : Initial Calibration



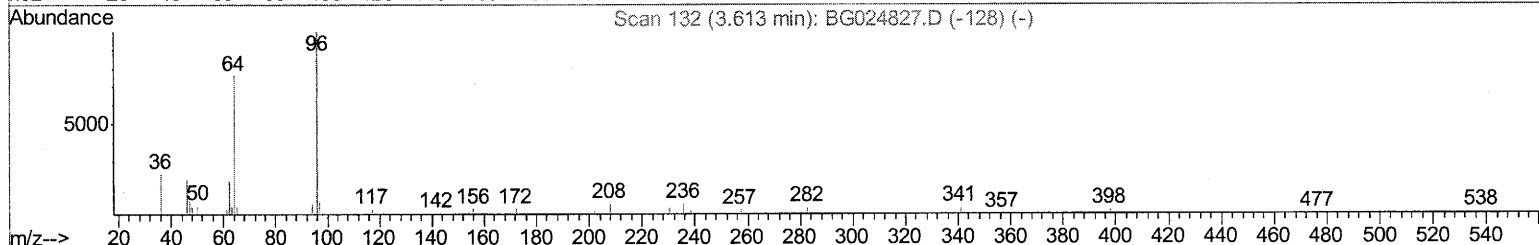
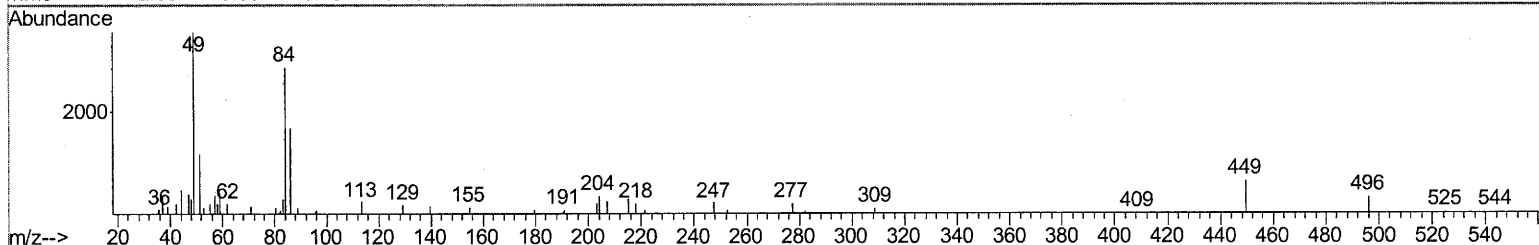
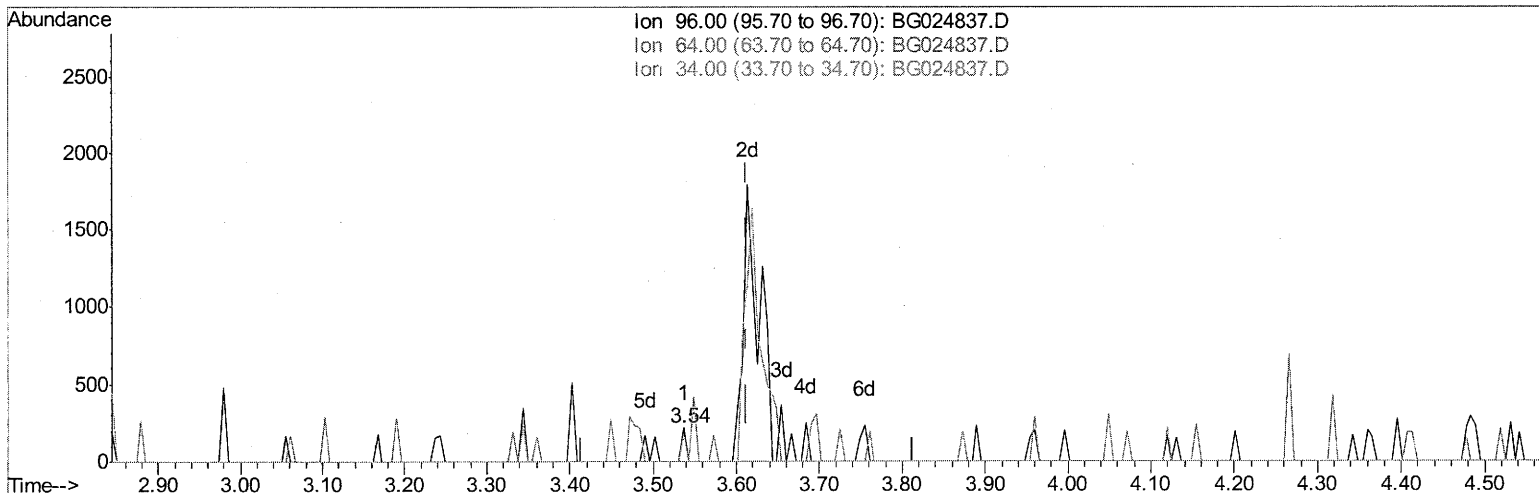
Data Path : Z:\HPCHEM1\BNA\_G\DATA\BG111816\  
 Data File : BG024837.D  
 Acq On : 18 Nov 2016 22:58  
 Operator : UM/SJ  
 Sample : H5699-15  
 Misc :  
 ALS Vial : 12 Sample Multiplier: 1

Instrument :  
 BNA\_G  
 Client Sample ID :  
 A4WE0

Manual Integrations  
 APPROVED

sohil  
 11/21/2016 3:41:50 PM

Quant Time: Nov 19 00:10:40 2016  
 Quant Method : Z:\HPCHEM1\BNA\_G\METHODS\SOM02.2-EPA-BG111416.M  
 Quant Title : SVOA CALIBRATION  
 QLast Update : Sat Nov 19 00:07:29 2016  
 Response via : Initial Calibration



TIC: BG024837.D

(3) 1,4-Dioxane-d8 (S)

3.537min (-0.076) 0.03ng/uL

response 76

Ion	Exp%	Act%
96.00	100	100
64.00	88.90	79.72
34.00	0.00	0.00
0.00	0.00	0.00

Quantitation Report (Qedit)

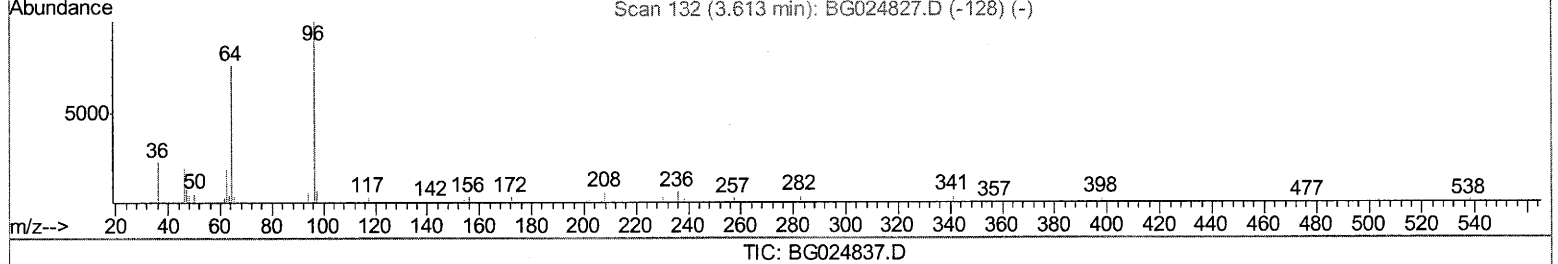
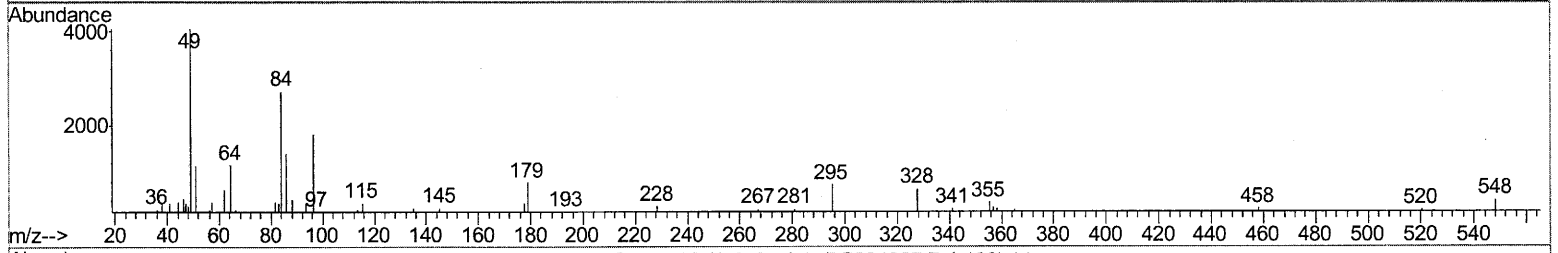
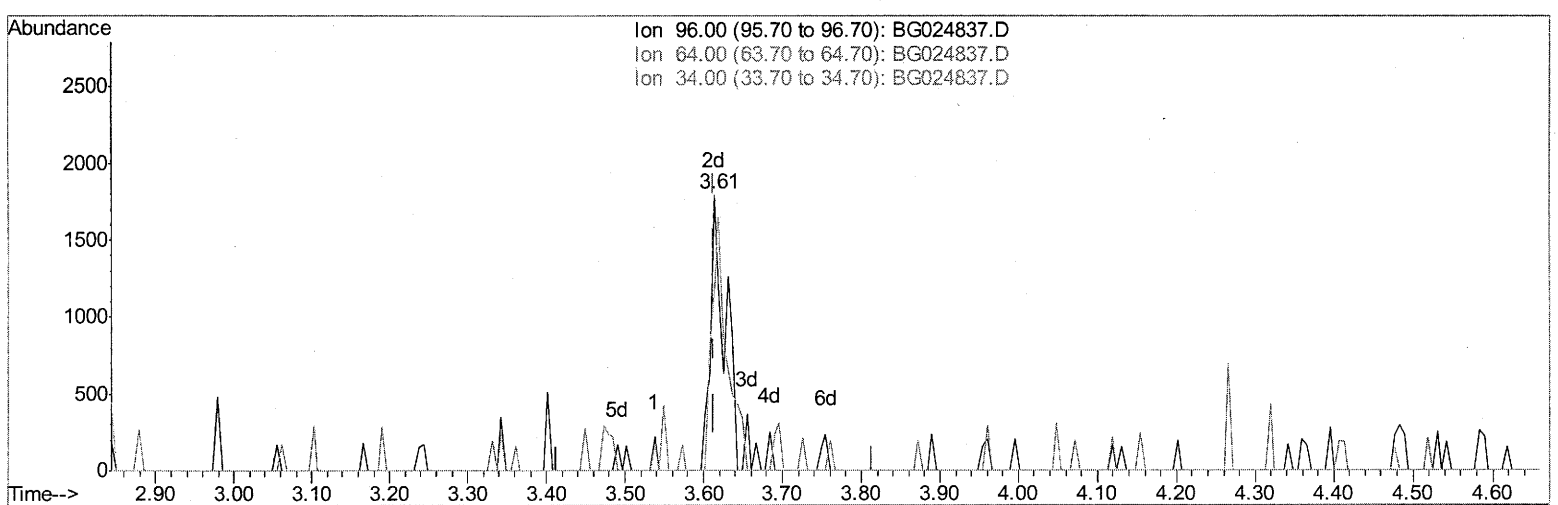
Data Path : Z:\HPCHEM1\BNA\_G\DATA\BG111816\  
 Data File : BG024837.D  
 Acq On : 18 Nov 2016 22:58  
 Operator : UM/SJ  
 Sample : H5699-15  
 Misc :  
 ALS Vial : 12 Sample Multiplier: 1

Instrument :  
 BNA\_G  
 Client Sampled :  
 A4WE0

Manual Integrations  
 APPROVED

sohil  
 11/21/2016 3:41:50 PM

Quant Time: Nov 19 00:10:40 2016  
 Quant Method : Z:\HPCHEM1\BNA\_G\METHODS\SOM02.2-EPA-BG111416.M  
 Quant Title : SVOA CALIBRATION  
 QLast Update : Sat Nov 19 00:07:29 2016  
 Response via : Initial Calibration



(3) 1,4-Dioxane-d8 (S)

3.614min (+0.000) 1.11ng/uL m UM

response 2517 11/21/16

Ion	Exp%	Act%
96.00	100	100
64.00	88.90	64.68#
34.00	0.00	0.00
0.00	0.00	0.00

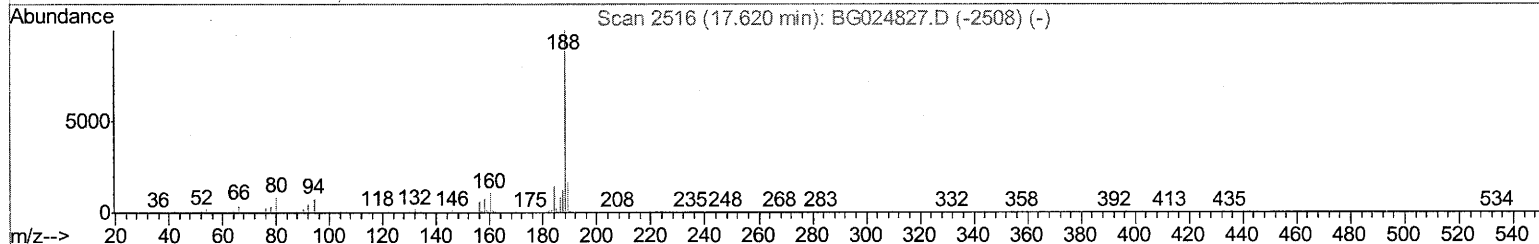
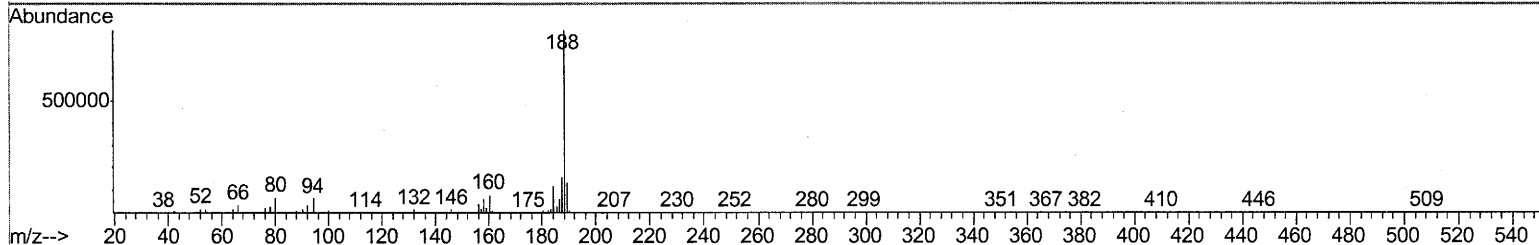
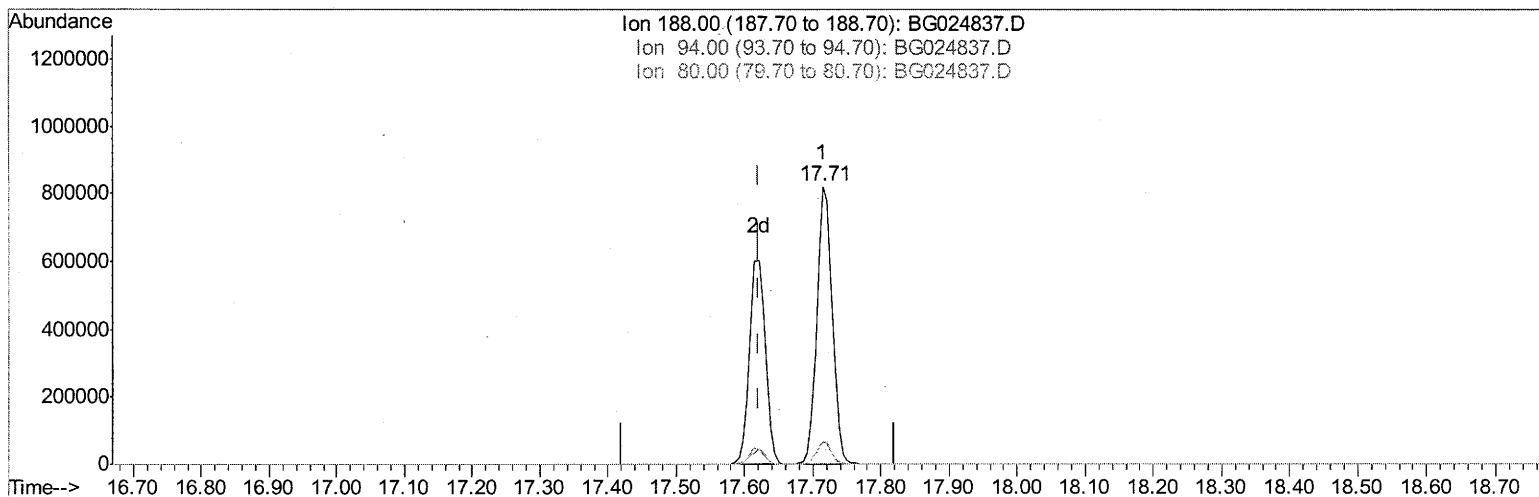
Data Path : Z:\HPCHEM1\BNA\_G\DATA\BG111816\  
 Data File : BG024837.D  
 Acq On : 18 Nov 2016 22:58  
 Operator : UM/SJ  
 Sample : H5699-15  
 Misc :  
 ALS Vial : 12 Sample Multiplier: 1

Instrument :  
 BNA\_G  
 ClientSampleID :  
 A4WE0

Manual Integrations  
 APPROVED

sohil  
 11/21/2016 3:41:50 PM

Quant Time: Nov 19 00:10:40 2016  
 Quant Method : Z:\HPCHEM1\BNA\_G\METHODS\SOM02.2-EPA-BG111416.M  
 Quant Title : SVOA CALIBRATION  
 QLast Update : Sat Nov 19 00:07:29 2016  
 Response via : Initial Calibration



TIC: BG024837.D

(61) Phenanthrene-d10 (I)  
 17.715min (+0.094) 20.00ng/ul  
 response 1299934

Ion	Exp%	Act%
188.00	100	100
94.00	8.80	7.99
80.00	9.50	8.33
0.00	0.00	0.00

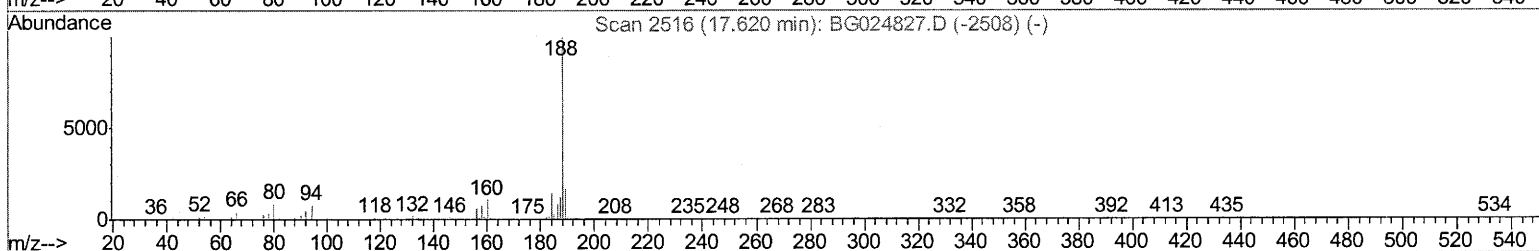
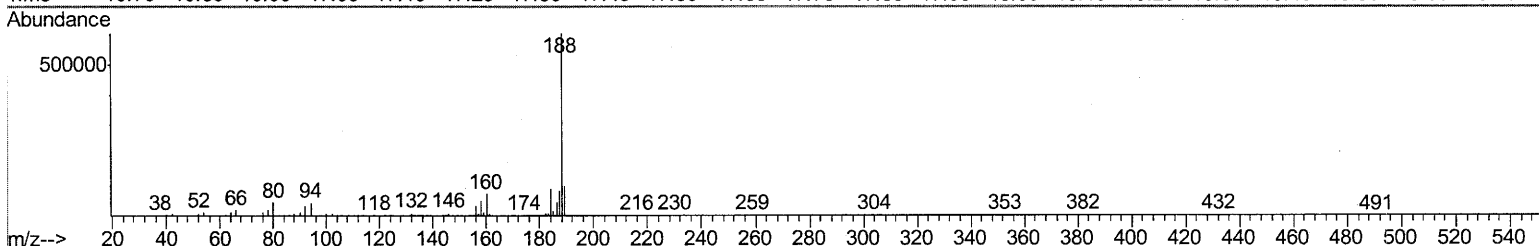
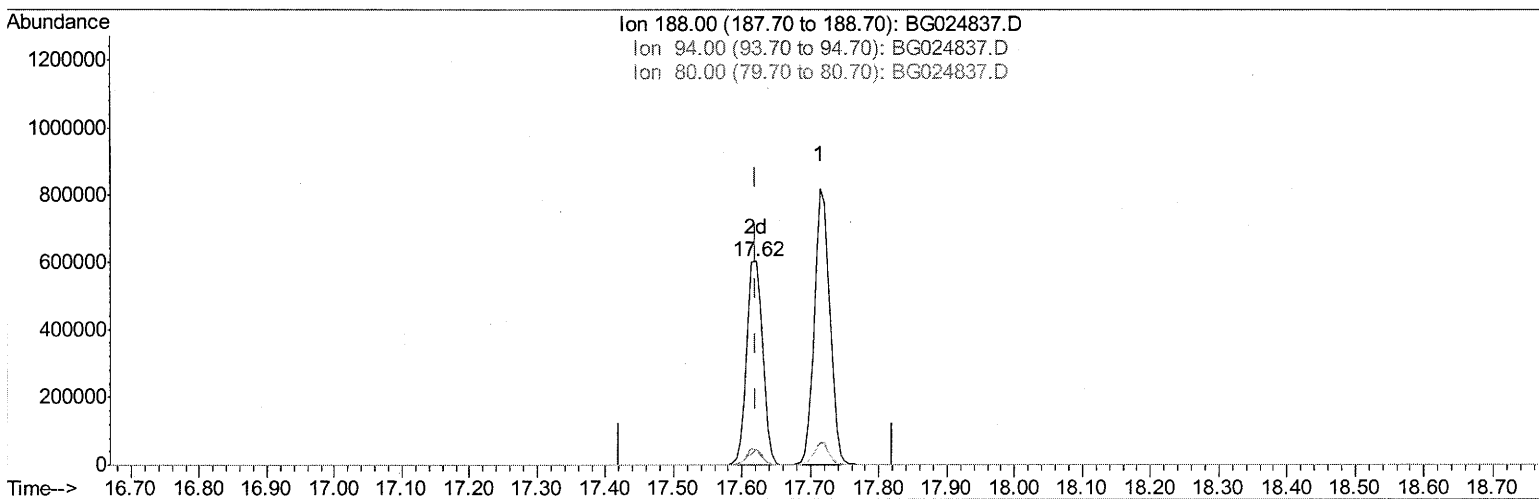
Data Path : Z:\HPCHEM1\BNA\_G\DATA\BG111816\  
 Data File : BG024837.D  
 Acq On : 18 Nov 2016 22:58  
 Operator : UM/SJ  
 Sample : H5699-15  
 Misc :  
 ALS Vial : 12 Sample Multiplier: 1

Instrument :  
 BNA\_G  
 ClientSampled :  
 A4WE0

Manual Integrations  
 APPROVED

sohil  
 11/21/2016 3:41:50 PM

Quant Time: Nov 19 00:10:40 2016  
 Quant Method : Z:\HPCHEM1\BNA\_G\METHODS\SOM02.2-EPA-BG111416.M  
 Quant Title : SVOA CALIBRATION  
 QLast Update : Sat Nov 19 00:07:29 2016  
 Response via : Initial Calibration



(61) Phenanthrene-d10 (l)

17.621min (+0.000) 20.00ng/ul m UM

response 983897 11/21/16

Ion	Exp%	Act%
188.00	100	100
94.00	8.80	7.14
80.00	9.50	7.34#
0.00	0.00	0.00

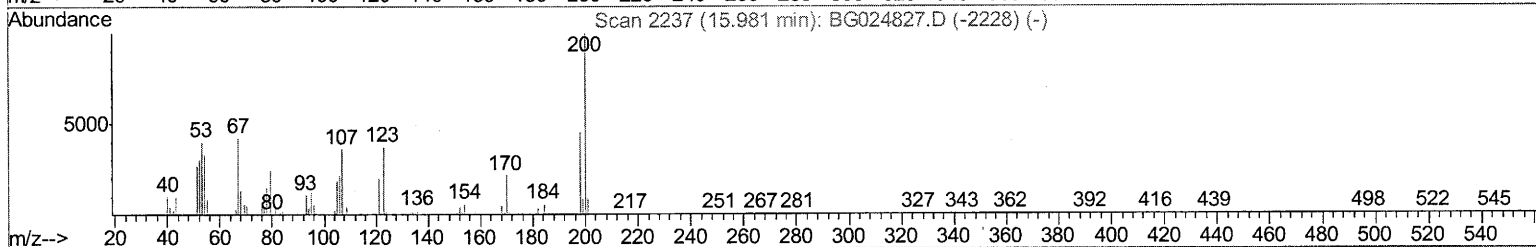
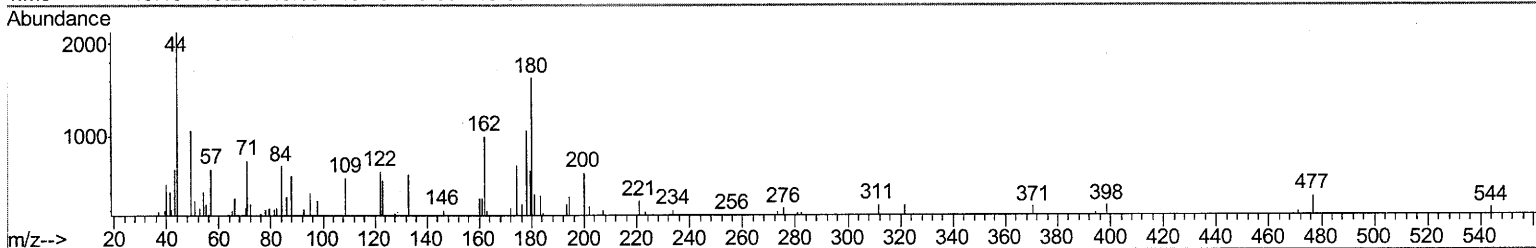
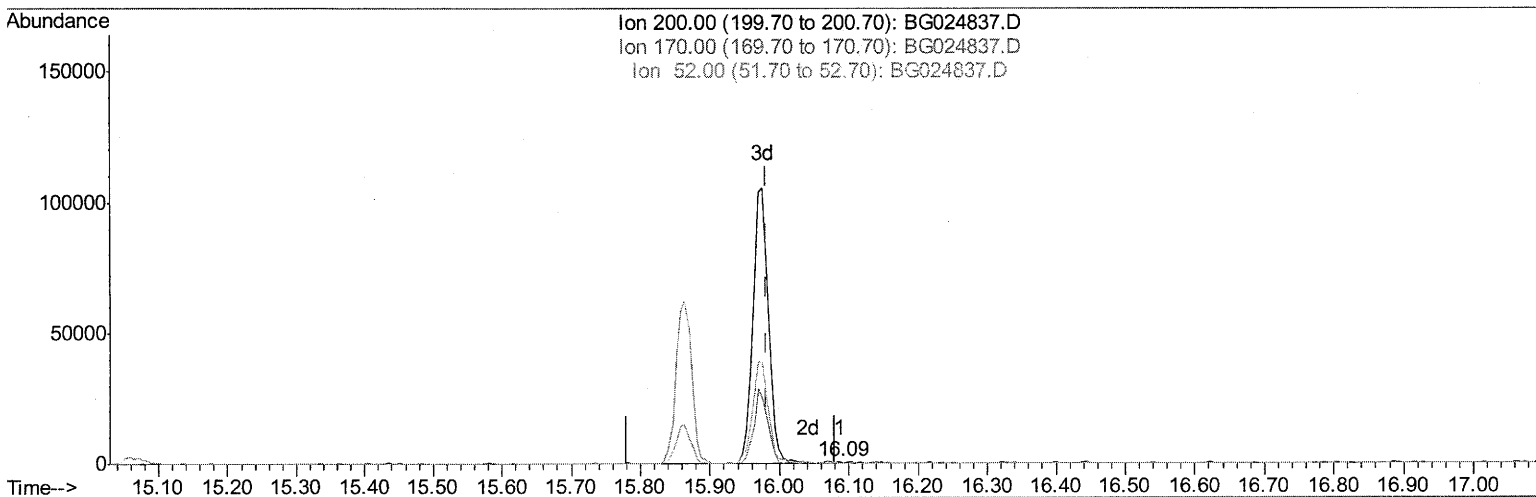
Data Path : Z:\HPCHEM1\BNA\_G\DATA\BG111816\  
 Data File : BG024837.D  
 Acq On : 18 Nov 2016 22:58  
 Operator : UM/SJ  
 Sample : H5699-15  
 Misc :  
 ALS Vial : 12 Sample Multiplier: 1

Instrument :  
 BNA\_G  
 Client Sample ID :  
 A4WE0

Manual Integrations  
 APPROVED

sohil  
 11/21/2016 3:41:50 PM

Quant Time: Nov 19 00:43:35 2016  
 Quant Method : Z:\HPCHEM1\BNA\_G\METHODS\SOM02.2-EPA-BG111416.M  
 Quant Title : SVOA CALIBRATION  
 QLast Update : Sat Nov 19 00:07:29 2016  
 Response via : Initial Calibration



TIC: BG024837.D

(62) 4,6-Dinitro-2-methylphenol-d2 (S)

16.087min (+0.106) 0.07ng/ul

response 487

Ion	Exp%	Act%
200.00	100	100
170.00	23.20	0.00#
52.00	47.20	0.00#
0.00	0.00	0.00

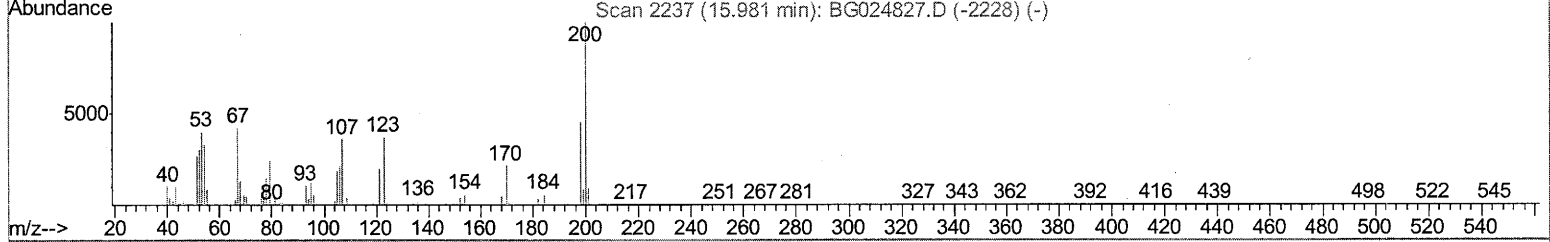
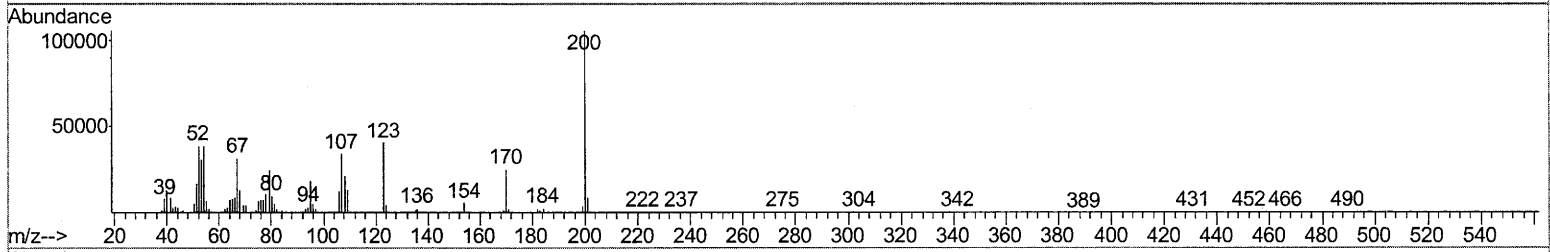
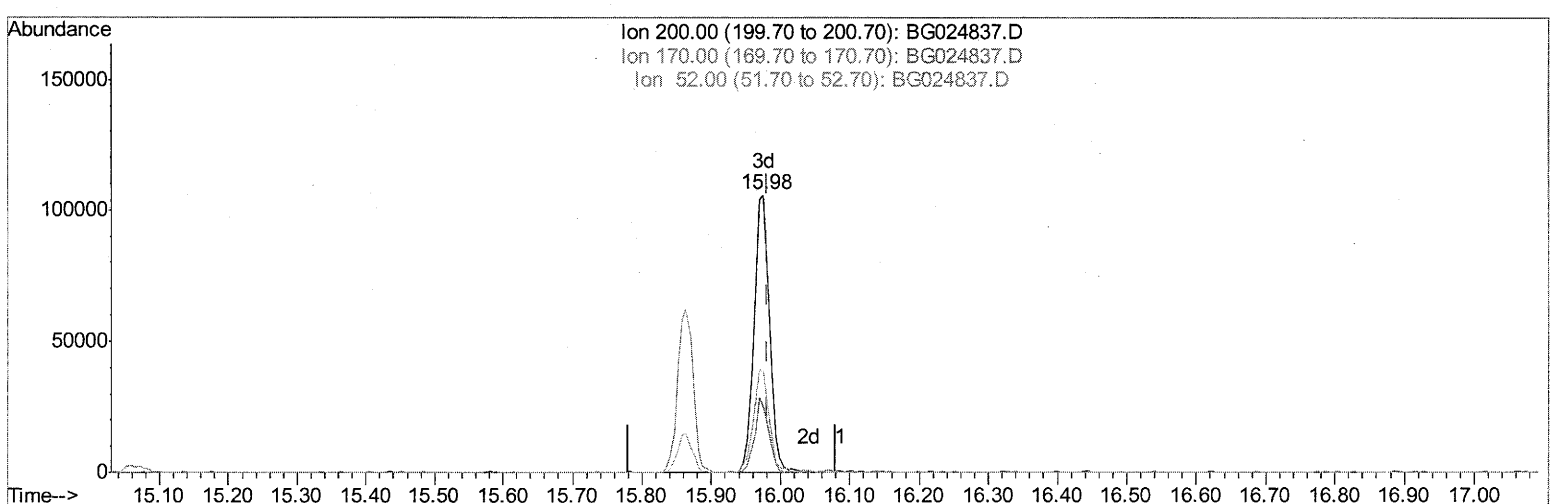
Quantitation Report (Qedit)

Data Path : Z:\HPCHEM1\BNA\_G\DATA\BG111816\  
 Data File : BG024837.D  
 Acq On : 18 Nov 2016 22:58  
 Operator : UM/SJ  
 Sample : H5699-15  
 Misc :  
 ALS Vial : 12 Sample Multiplier: 1

Instrument :  
 BNA\_G  
 ClientSampleId :  
 A4WE0

Manual Integrations  
 APPROVED  
 sohil  
 11/21/2016 3:41:50 PM

Quant Time: Nov 19 00:43:35 2016  
 Quant Method : Z:\HPCHEM1\BNA\_G\METHODS\SOM02.2-EPA-BG111416.M  
 Quant Title : SVOA CALIBRATION  
 QLast Update : Sat Nov 19 00:07:29 2016  
 Response via : Initial Calibration



TIC: BG024837.D

(62) 4,6-Dinitro-2-methylphenol-d2 (S)  
 15.976min (-0.006) 24.27ng/ul m UM  
 response 164141 11/21/16

Ion	Exp%	Act%
200.00	100	100
170.00	23.20	23.75
52.00	47.20	36.50#
0.00	0.00	0.00

Data Path : Z:\HPCHEM1\BNA\_G\DATA\BG111816\  
 Data File : BG024837.D  
 Acq On : 18 Nov 2016 22:58  
 Operator : UM/SJ  
 Sample : H5699-15  
 Misc :  
 ALS Vial : 12 Sample Multiplier: 1

Instrument :  
 BNA\_G  
 ClientSampleID :  
 A4WE0

Manual Integrations  
 APPROVED

sohil  
 11/21/2016 3:41:50 PM

Quant Time: Nov 19 00:43:58 2016  
 Quant Method : Z:\HPCHEM1\BNA\_G\METHODS\SOM02.2-EPA-BG111416.M  
 Quant Title : SVOA CALIBRATION  
 QLast Update : Sat Nov 19 00:07:29 2016  
 Response via : Initial Calibration

Internal Standards	R.T.	QIon	Response	Conc	Units	Dev(Min)
1) 1,4-Dichlorobenzene-d4	8.26	152	117957	20.00	ng/ul	0.00
18) Naphthalene-d8	11.09	136	532678	20.00	ng/ul	0.00
35) Acenaphthene-d10	14.88	164	466359	20.00	ng/ul	0.00
61) Phenanthrene-d10	17.62	188	983897m	20.00	ng/ul	0.00
75) Chrysene-d12	21.92	240	1238053	20.00	ng/ul	0.00
83) Perylene-d12	25.35	264	1263898	20.00	ng/ul	0.00
System Monitoring Compounds						
3) 1,4-Dioxane-d8	3.61	96	2517m	1.11	ng/uL	0.00
5) Phenol-d5	7.40	99	53184	5.26	ng/ul	0.00
7) Bis-(2-Chloroethyl)ether-d	7.57	67	145150	22.83	ng/ul	0.00
9) 2-Chlorophenol-d4	7.79	132	138334	19.09	ng/ul	0.00
13) 4-Methylphenol-d8	8.95	113	106942	12.60	ng/ul	-0.01
19) Nitrobenzene-d5	9.44	128	91578	22.70	ng/ul	0.00
22) 2-Nitrophenol-d4	10.15	143	113671	23.61	ng/ul	-0.01
26) 2,4-Dichlorophenol-d3	10.70	165	208281	21.73	ng/ul	0.00
29) 4-Chloroaniline-d4	11.22	131	8302	0.78	ng/ul	0.00
43) Dimethylphthalate-d6	14.27	166	843983	24.82	ng/ul	0.00
46) Acenaphthylene-d8	14.58	160	943470	25.46	ng/ul	0.00
51) 4-Nitrophenol-d4	15.06	143	30351	5.02	ng/ul	0.00
57) Fluorene-d10	15.86	176	815322	25.47	ng/ul	0.00
62) 4,6-Dinitro-2-methylphenol	15.98	200	164141m	24.27	ng/ul	0.00
70) Anthracene-d10	17.71	188	1299934	29.91	ng/ul	0.00
76) Pyrene-d10	19.99	212	1560702	29.07	ng/ul	0.00
87) Benzo(a)pyrene-d12	25.11	264	1712687	30.96	ng/ul	0.00

} UM  
 11/21/16

UM 11/21/16

Target Compounds Qvalue

(#) = qualifier out of range (m) = manual integration (+) = signals summed