

Data Path : Z:\HPCHEM1\BNA\_G\DATA\BG111816\  
 Data File : BG024833.D  
 Acq On : 18 Nov 2016 20:23  
 Operator : UM/SJ  
 Sample : H5699-11  
 Misc :  
 ALS Vial : 8 Sample Multiplier: 1

Instrument :  
 BNA\_G  
 ClientSampleId :  
 A4WD6

## Integration Parameters: LSCINT.P

Integrator: RTE  
 Smoothing : ON  
 Sampling : 1  
 Start Thrs: 0.1  
 Stop Thrs : 0

Filtering: 5  
 Min Area: 0.1 % of largest Peak  
 Max Peaks: 100  
 Peak Location: TOP

If leading or trailing edge < 100 prefer < Baseline drop else tangent >  
 Peak separation: 1

Method : Z:\HPCHEM1\BNA\_G\METHODS\SOM02.2-EPA-BG111416.M  
 Title : SVOA CALIBRATION

Signal : TIC

peak #	R.T. min	first scan	max scan	last scan	PK TY	peak height	corr. area	corr. % max.	% of total
1	3.619	129	133	138	rBV7	8245	13946	0.33%	0.036%
2	3.754	153	156	159	rVB3	9296	9931	0.24%	0.025%
3	3.954	186	190	194	rBV6	8962	15567	0.37%	0.040%
4	3.995	194	197	202	rVB4	5936	8329	0.20%	0.021%
5	4.048	202	206	208	rBV3	7161	7538	0.18%	0.019%
6	4.154	223	224	230	rVB5	6118	7649	0.18%	0.020%
7	4.400	263	266	269	rVB4	10795	10327	0.24%	0.026%
8	4.483	277	280	284	rVB4	4998	7405	0.18%	0.019%
9	4.818	333	337	339	rVB4	7601	9373	0.22%	0.024%
10	5.188	396	400	403	rBV4	6052	8069	0.19%	0.021%
11	5.317	418	422	431	rVB3	16436	31687	0.75%	0.081%
12	5.658	479	480	484	rBV3	6930	7883	0.19%	0.020%
13	5.775	498	500	506	rVB4	7374	13040	0.31%	0.033%
14	5.957	530	531	538	rVB4	6212	7760	0.18%	0.020%
15	7.397	769	776	783	rBV3	116697	215074	5.10%	0.549%
16	7.497	789	793	795	rVB4	9109	11999	0.28%	0.031%
17	7.573	795	806	814	rBV	332476	600911	14.25%	1.533%
18	7.785	831	842	853	rBV2	376142	679742	16.12%	1.734%
19	8.043	881	886	889	rVB4	7607	8967	0.21%	0.023%
20	8.108	893	897	899	rBV4	5083	8018	0.19%	0.020%
21	8.208	907	914	915	rBV5	11995	16092	0.38%	0.041%
22	8.261	915	923	932	rVB	446531	798137	18.92%	2.036%
23	8.460	954	957	962	rBV6	15160	25760	0.61%	0.066%
24	8.543	968	971	974	rBV	5606	8223	0.19%	0.021%
25	8.784	1005	1012	1020	rBV9	10430	27657	0.66%	0.071%
26	8.901	1028	1032	1034	rBV3	9193	14922	0.35%	0.038%
27	8.948	1034	1040	1051	rVB2	316550	582650	13.82%	1.486%
28	9.113	1067	1068	1073	rBV3	7240	7446	0.18%	0.019%
29	9.436	1113	1123	1132	rBV2	498194	919394	21.80%	2.345%
30	9.559	1141	1144	1147	rVB4	7963	7578	0.18%	0.019%
31	9.812	1184	1187	1191	rBV3	6323	8294	0.20%	0.021%
32	9.982	1211	1216	1218	rBV3	7059	7587	0.18%	0.019%
33	10.035	1224	1225	1232	rVB4	4813	7390	0.18%	0.019%
34	10.158	1232	1246	1260	rBV	452224	851101	20.18%	2.171%

Data Path : Z:\HPCHEM1\BNA\_G\DATA\BG111816\  
 Data File : BG024833.D  
 Acq On : 18 Nov 2016 20:23  
 Operator : UM/SJ  
 Sample : H5699-11  
 Misc :  
 ALS Vial : 8 Sample Multiplier: 1

Instrument :  
 BNA\_G  
 ClientSampleId :  
 A4WD6

## Integration Parameters: LSCINT.P

Integrator: RTE  
 Smoothing : ON  
 Sampling : 1  
 Start Thrs: 0.1  
 Stop Thrs : 0

Filtering: 5  
 Min Area: 0.1 % of largest Peak  
 Max Peaks: 100  
 Peak Location: TOP

If leading or trailing edge < 100 prefer < Baseline drop else tangent >  
 Peak separation: 1

Method : Z:\HPCHEM1\BNA\_G\METHODS\SOM02.2-EPA-BG111416.M  
 Title : SVOA CALIBRATION

35	10.452	1288	1296	1301	rVB9	6766	14690	0.35%	0.037%
36	10.693	1328	1337	1350	rBV	587680	1147730	27.21%	2.927%
37	11.087	1397	1404	1414	rBV	677818	1207293	28.63%	3.079%
38	11.222	1420	1427	1435	rVB4	21490	44677	1.06%	0.114%
39	11.592	1484	1490	1495	rBV5	6610	10945	0.26%	0.028%
40	12.062	1564	1570	1574	rVB5	4508	9509	0.23%	0.024%
41	12.227	1592	1598	1600	rBV4	4619	8551	0.20%	0.022%
42	12.415	1622	1630	1632	rVB3	4910	10188	0.24%	0.026%
43	12.450	1632	1636	1639	rBV3	6528	9649	0.23%	0.025%
44	12.655	1662	1671	1675	rBV5	14762	33514	0.79%	0.085%
45	12.785	1687	1693	1699	rBV5	8862	15366	0.36%	0.039%
46	13.296	1778	1780	1786	rVB4	5104	8972	0.21%	0.023%
47	13.654	1840	1841	1845	rVB2	7736	7366	0.17%	0.019%
48	13.731	1849	1854	1865	rVB6	22550	54452	1.29%	0.139%
49	13.819	1865	1869	1871	rBV3	5569	10280	0.24%	0.026%
50	13.901	1880	1883	1889	rVB2	5423	8006	0.19%	0.020%
51	13.960	1889	1893	1898	rVB4	6360	10818	0.26%	0.028%
52	14.042	1898	1907	1909	rBV2	6706	15688	0.37%	0.040%
53	14.177	1922	1930	1932	rBV4	6549	7793	0.18%	0.020%
54	14.218	1932	1937	1939	rBV3	9732	11668	0.28%	0.030%
55	14.265	1939	1945	1954	rVB	1308828	1983118	47.02%	5.058%
56	14.577	1990	1998	2007	rVV	1305044	2188776	51.90%	5.583%
57	14.653	2007	2011	2016	rVB5	6028	10800	0.26%	0.028%
58	14.876	2036	2049	2057	rBV	1231016	1937556	45.94%	4.942%
59	14.959	2061	2063	2067	rVB4	5746	7718	0.18%	0.020%
60	15.000	2067	2070	2073	rVB2	8705	7866	0.19%	0.020%
61	15.059	2073	2080	2090	rBV2	128284	276514	6.56%	0.705%
62	15.252	2108	2113	2118	rBV5	6293	11341	0.27%	0.029%
63	15.323	2121	2125	2127	rVB3	8395	9697	0.23%	0.025%
64	15.764	2196	2200	2207	rBV7	12413	23217	0.55%	0.059%
65	15.863	2207	2217	2226	rVV	1956216	3036534	72.00%	7.745%
66	15.975	2228	2236	2249	rVB	730171	1139858	27.03%	2.907%
67	16.104	2250	2258	2263	rVB8	27083	50084	1.19%	0.128%
68	16.251	2279	2283	2286	rVB6	6350	8604	0.20%	0.022%
69	16.275	2286	2287	2290	rVB2	9220	7489	0.18%	0.019%
70	16.381	2304	2305	2309	rVB4	7648	7778	0.18%	0.020%
71	16.422	2309	2312	2313	rBV	8322	9097	0.22%	0.023%

Data Path : Z:\HPCHEM1\BNA\_G\DATA\BG111816\  
 Data File : BG024833.D  
 Acq On : 18 Nov 2016 20:23  
 Operator : UM/SJ  
 Sample : H5699-11  
 Misc :  
 ALS Vial : 8 Sample Multiplier: 1

Instrument :  
 BNA\_G  
 ClientSampleId :  
 A4WD6

## Integration Parameters: LSCINT.P

Integrator: RTE  
 Smoothing : ON  
 Sampling : 1  
 Start Thrs: 0.1  
 Stop Thrs : 0

Filtering: 5  
 Min Area: 0.1 % of largest Peak  
 Max Peaks: 100  
 Peak Location: TOP

If leading or trailing edge < 100 prefer < Baseline drop else tangent >  
 Peak separation: 1

Method : Z:\HPCHEM1\BNA\_G\METHODS\SOM02.2-EPA-BG111416.M  
 Title : SVOA CALIBRATION

72	16.645	2347	2350	2355	rVB7	6240	9777	0.23%	0.025%
73	16.815	2376	2379	2384	rVB6	6857	10378	0.25%	0.026%
74	17.015	2410	2413	2417	rVB4	15890	19286	0.46%	0.049%
75	17.227	2445	2449	2451	rBV4	6314	7385	0.18%	0.019%
76	17.409	2474	2480	2487	rVB6	18107	43348	1.03%	0.111%
77	17.467	2487	2490	2496	rBV7	8809	18691	0.44%	0.048%
78	17.620	2507	2516	2524	rBV2	1515478	2401110	56.93%	6.124%
79	17.720	2524	2533	2541	rVB	2185610	3452290	81.86%	8.806%
80	17.808	2547	2548	2553	rVB2	5795	7563	0.18%	0.019%
81	17.891	2556	2562	2567	rBV7	8007	19189	0.45%	0.049%
82	17.932	2568	2569	2575	rVB4	8537	9543	0.23%	0.024%
83	17.990	2575	2579	2585	rBV8	7324	15875	0.38%	0.040%
84	18.090	2589	2596	2601	rBV9	14992	28420	0.67%	0.072%
85	18.255	2619	2624	2628	rVB8	10453	23304	0.55%	0.059%
86	18.455	2654	2658	2662	rBV6	12490	19305	0.46%	0.049%
87	18.660	2690	2693	2696	rVB4	11713	16243	0.39%	0.041%
88	18.690	2696	2698	2700	rBV2	7533	8493	0.20%	0.022%
89	18.836	2722	2723	2726	rVB3	13955	11714	0.28%	0.030%
90	19.459	2826	2829	2835	rBV8	11848	26929	0.64%	0.069%
91	19.624	2853	2857	2863	rVB3	30103	46259	1.10%	0.118%
92	19.718	2871	2873	2878	rBV6	11150	10931	0.26%	0.028%
93	19.882	2896	2901	2905	rVB3	27275	43849	1.04%	0.112%
94	19.988	2913	2919	2928	rBV	2791694	4103988	97.31%	10.468%
95	20.200	2950	2955	2959	rBV6	26871	32922	0.78%	0.084%
96	21.122	3109	3112	3116	rBV6	23534	35629	0.84%	0.091%
97	21.915	3239	3247	3254	rBV	1731980	3090322	73.28%	7.882%
98	23.408	3500	3501	3507	rBV6	25617	35906	0.85%	0.092%
99	25.106	3778	3790	3804	rBV	1473814	4217430	100.00%	10.757%
100	25.346	3821	3831	3847	rVB3	995193	3110641	73.76%	7.934%

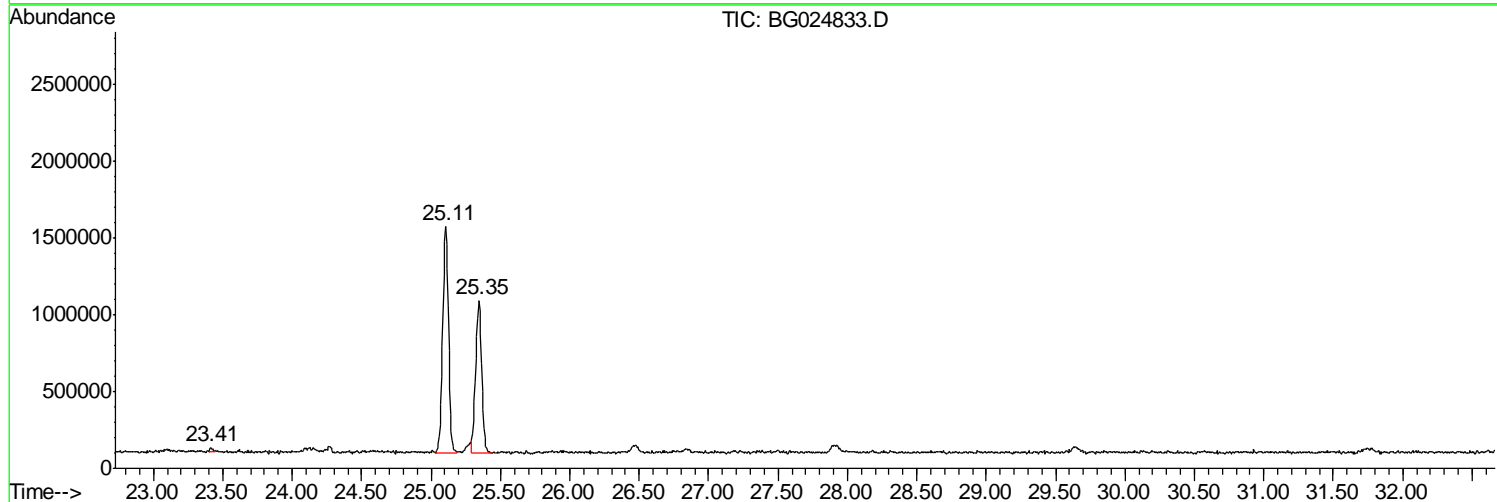
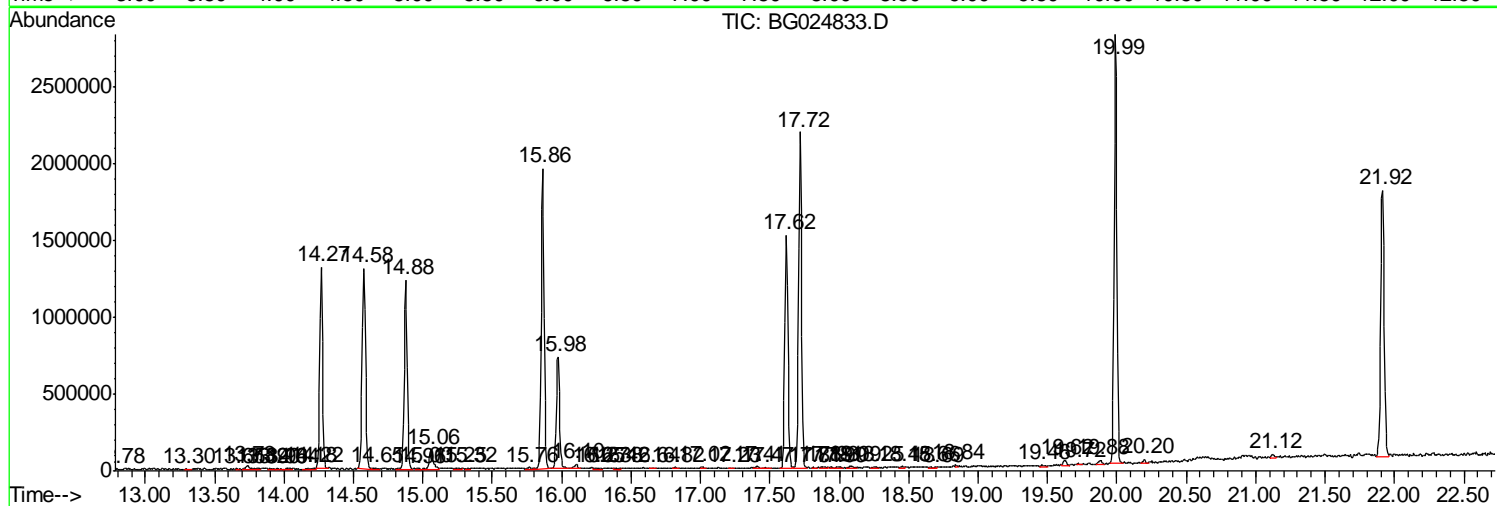
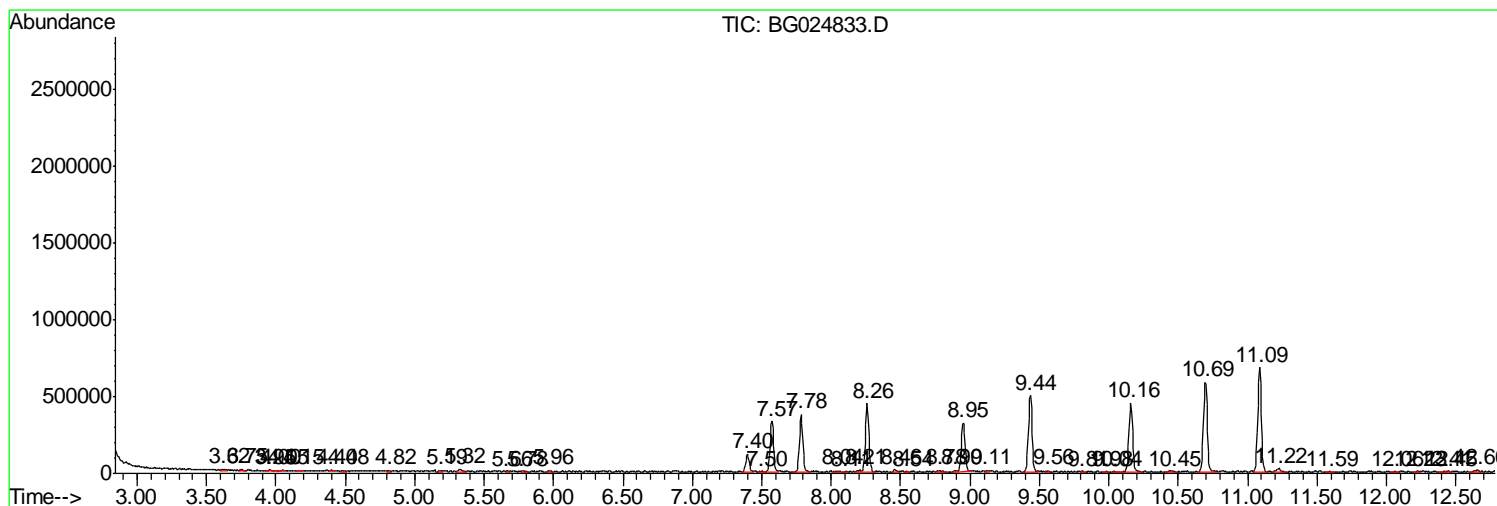
Sum of corrected areas: 39205368

Data Path : Z:\HPCHEM1\BNA\_G\DATA\BG111816\  
 Data File : BG024833.D  
 Acq On : 18 Nov 2016 20:23  
 Operator : UM/SJ  
 Sample : H5699-11  
 Misc :  
 ALS Vial : 8 Sample Multiplier: 1

Instrument :  
 BNA\_G  
 ClientSampleId :  
 A4WD6

Quant Method : Z:\HPCHEM1\BNA\_G\METHODS\SOM02.2-EPA-BG111416.M  
 Quant Title : SVOA CALIBRATION

TIC Library : C:\DATABASE\NIST11.L  
 TIC Integration Parameters: LSCINT.P



Data Path : Z:\HPCHEM1\BNA\_G\DATA\BG111816\  
Data File : BG024833.D  
Acq On : 18 Nov 2016 20:23  
Operator : UM/SJ  
Sample : H5699-11  
Misc :  
ALS Vial : 8 Sample Multiplier: 1

Instrument :  
BNA\_G  
ClientSampleId :  
A4WD6

Quant Method : Z:\HPCHEM1\BNA\_G\METHODS\SOM02.2-EPA-BG111416.M  
Quant Title : SVOA CALIBRATION

TIC Library : C:\DATABASE\NIST11.L  
TIC Integration Parameters: LSCINT.P

No Library Search Compounds Detected

\*\*\*\*\*

Data Path : Z:\HPCHEM1\BNA\_G\DATA\BG111816\  
Data File : BG024833.D  
Acq On : 18 Nov 2016 20:23  
Operator : UM/SJ  
Sample : H5699-11  
Misc :  
ALS Vial : 8 Sample Multiplier: 1

Instrument :  
BNA\_G  
ClientSampleId :  
A4WD6

Quant Method : Z:\HPCHEM1\BNA\_G\METHODS\SOM02.2-EPA-BG111416.M  
Quant Title : SVOA CALIBRATION

TIC Library : C:\DATABASE\NIST11.L  
TIC Integration Parameters: LSCINT.P

TIC Top Hit name	RT	EstConc	Units	Response	--Internal Standard--			
					#	RT	Resp	Conc

---