

Data Path : Z:\HPCHEM1\BNA G\DATA\BG111915\
 Data File : BG019719.D
 Acq On : 20 Nov 2015 00:02
 Operator : UM/NP
 Sample : G4310-15
 Misc :
 ALS Vial : 21 Sample Multiplier: 1

Instrument :
 BNA_G
 ClientSampleId :
 D9KN0

Quant Time: Nov 20 04:21:59 2015
 Quant Method : Z:\HPCHEM1\BNA G\METHODS\SOM02.2-EPA-BG111615.M
 Quant Title : SVOA CALIBRATION
 QLast Update : Fri Nov 20 01:13:44 2015
 Response via : Initial Calibration

Internal Standards	R.T.	QIon	Response	Conc	Units	Dev(Min)
1) 1,4-Dichlorobenzene-d4	8.15	152	31676	20.00	ng/ul	0.00
18) Naphthalene-d8	10.98	136	137697	20.00	ng/ul	0.00
36) Acenaphthene-d10	14.78	164	114971	20.00	ng/ul	0.00
62) Phenanthrene-d10	17.52	188	312401	20.00	ng/ul	0.00
78) Chrysene-d12	21.79	240	381209	20.00	ng/ul	0.00
86) Perylene-d12	25.11	264	365013	20.00	ng/ul	0.00

System Monitoring Compounds

3) 1,4-Dioxane-d8	3.44	96	4257	5.74	ng/uL	0.00
5) Phenol-d5	7.30	99	107870	33.25	ng/ul	0.00
7) Bis-(2-Chloroethyl)ether-d	7.46	67	66850	31.44	ng/ul	0.00
9) 2-Chlorophenol-d4	7.68	132	66436	31.93	ng/ul	0.00
13) 4-Methylphenol-d8	8.86	113	90410	33.65	ng/ul	0.00
19) Nitrobenzene-d5	9.33	128	36464	32.25	ng/ul	0.00
22) 2-Nitrophenol-d4	10.05	143	35362	27.79	ng/ul	0.00
26) 2,4-Dichlorophenol-d3	10.60	165	94875	34.48	ng/ul	0.00
29) 4-Chloroaniline-d4	11.11	131	106927	40.94	ng/ul	0.00
44) Dimethylphthalate-d6	14.18	166	327994	31.54	ng/ul	0.00
47) Acenaphthylene-d8	14.48	160	378880	33.62	ng/ul	0.00
52) 4-Nitrophenol-d4	14.97	143	51116	31.20	ng/ul	0.00
58) Fluorene-d10	15.77	176	309804	33.30	ng/ul	0.00
63) 4,6-Dinitro-2-methylphenol	15.88	200	6791	3.37	ng/ul	0.00
71) Anthracene-d10	17.62	188	510699	33.67	ng/ul	0.00
79) Pyrene-d10	19.90	212	593490	34.17	ng/ul	0.00
90) Benzo(a)pyrene-d12	24.90	264	671115	35.22	ng/ul	0.02

Target Compounds

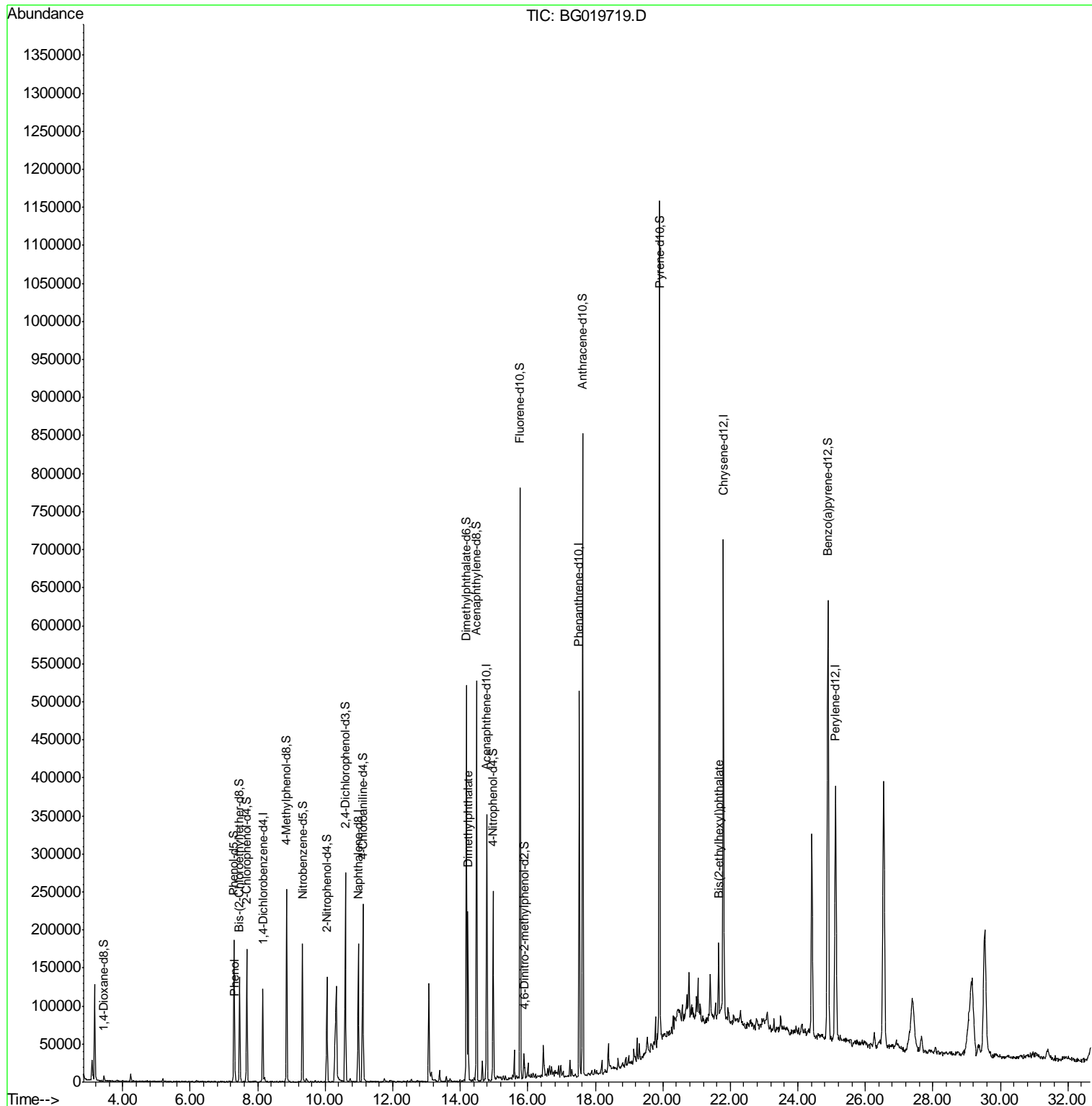
Target Compounds	R.T.	QIon	Response	Conc	Units	Ovalue
6) Phenol	7.32	94	6477	1.85	ng/ul	89
45) Dimethylphthalate	14.23	163	133334	12.93	ng/ul	99
84) Bis(2-ethylhexyl)phthalate	21.65	149	38487	3.58	ng/ul	96

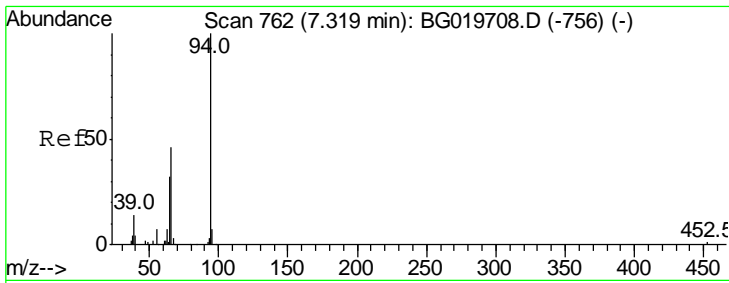
(#) = qualifier out of range (m) = manual integration (+) = signals summed

Data Path : Z:\HPCHEM1\BNA G\DATA\BG111915\
 Data File : BG019719.D
 Acq On : 20 Nov 2015 00:02
 Operator : UM/NP
 Sample : G4310-15
 Misc :
 ALS Vial : 21 Sample Multiplier: 1

Instrument :
 BNA_G
 ClientSampled :
 D9KN0

Quant Time: Nov 20 04:21:59 2015
 Quant Method : Z:\HPCHEM1\BNA G\METHODS\SOM02.2-EPA-BG111615.M
 Quant Title : SVOA CALIBRATION
 QLast Update : Fri Nov 20 01:13:44 2015
 Response via : Initial Calibration

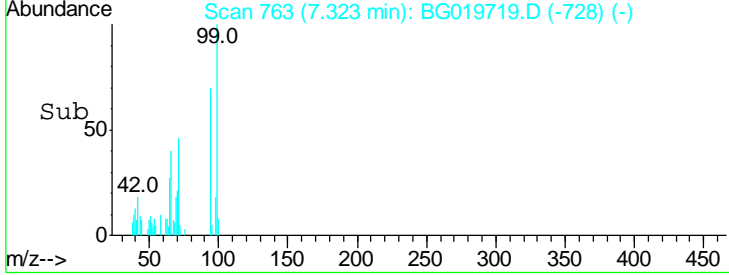
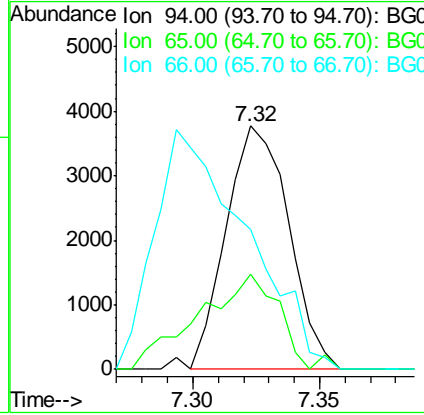
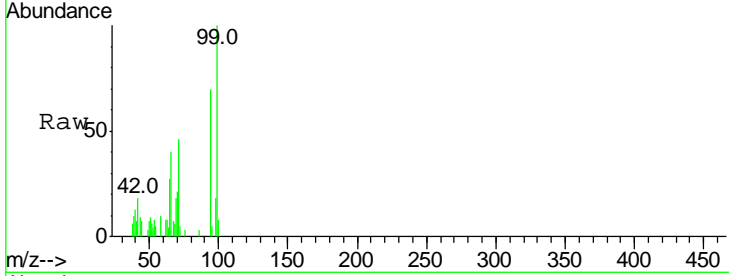




#6
 Phenol
 Concen: 1.85 ng/ul
 RT: 7.32 min Scan# 763
 Delta R.T. 0.00 min
 Lab File: BG019719.D
 Acq: 20 Nov 2015 00:02

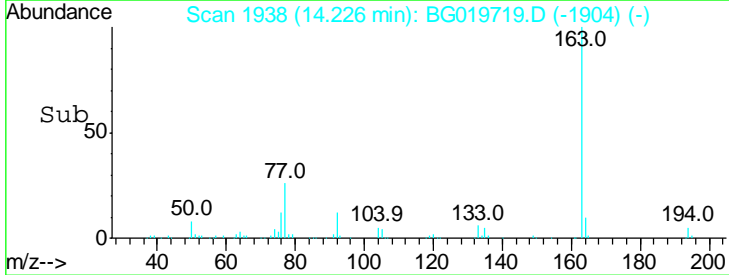
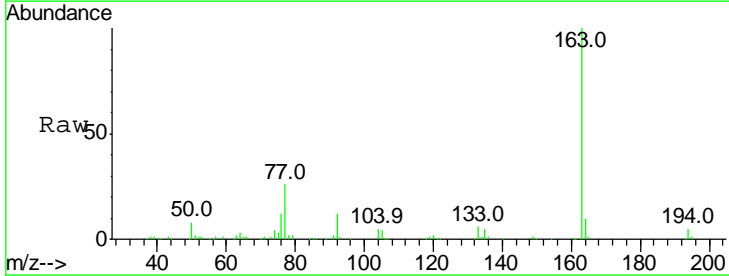
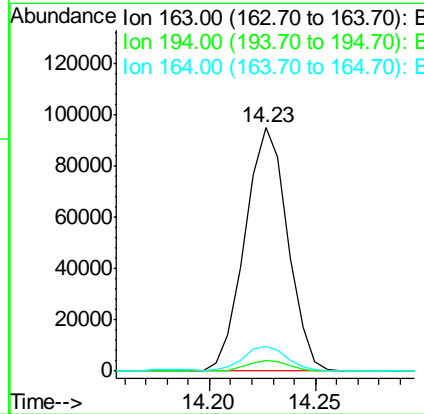
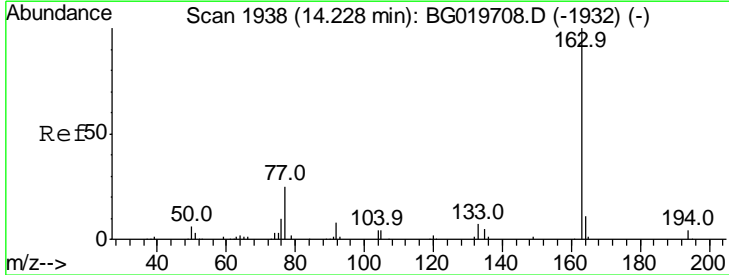
Instrument :
 BNA_G
 ClientSampled :
 D9KN0

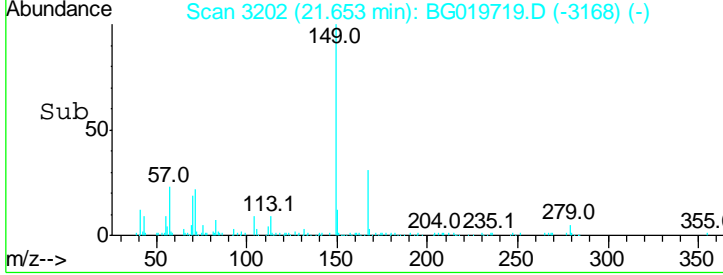
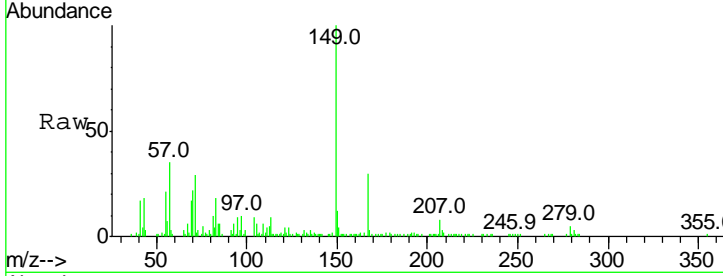
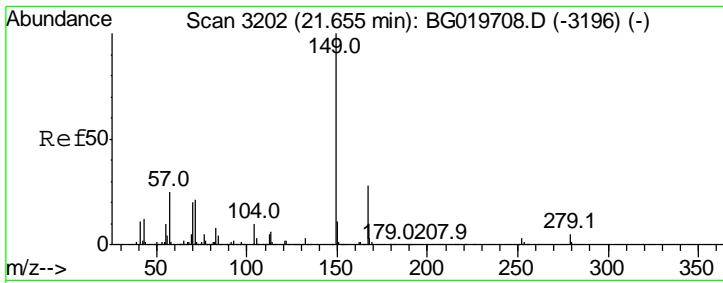
Tgt Ion	Resp	Lower	Upper
94	100		
65	39.0	27.4	41.0
66	57.7	39.0	58.6



#45
 Dimethylphthalate
 Concen: 12.93 ng/ul
 RT: 14.23 min Scan# 1938
 Delta R.T. -0.00 min
 Lab File: BG019719.D
 Acq: 20 Nov 2015 00:02

Tgt Ion	Resp	Lower	Upper
163	100		
194	4.6	3.5	5.3
164	10.2	8.3	12.5





#84
 Bis(2-ethylhexyl)phthalate
 Concen: 3.58 ng/ul
 RT: 21.65 min Scan# 3202
 Delta R.T. -0.00 min
 Lab File: BG019719.D
 Acq: 20 Nov 2015 00:02

Instrument :
 BNA_G
 ClientSampleId :
 D9KN0

Tot Ion:149 Resp: 38487

Ion	Ratio	Lower	Upper
149	100		
167	30.3	22.4	33.6
279	4.7	3.6	5.4

