

Data Path : Z:\svoasrv\HPCHEM1\BNA_G\Data\BG112021\
 Data File : BG051155.D
 Acq On : 20 Nov 2021 19:58
 Operator : CG/JU
 Sample : M4758-33
 Misc :
 ALS Vial : 10 Sample Multiplier: 1

Instrument :
 BNA_G
ClientSampleId :
 TP17

Quant Time: Nov 22 01:26:08 2021
 Quant Method : Z:\svoasrv\HPCHEM1\BNA_G\Methods\8270-BG111921.M
 Quant Title : ASP BNA STANDARDS FOR 5 POINT CALIBRATION
 QLast Update : Fri Nov 19 16:26:22 2021
 Response via : Initial Calibration

Compound	R. T.	QI on	Response	Conc	Units	Dev(Min)	

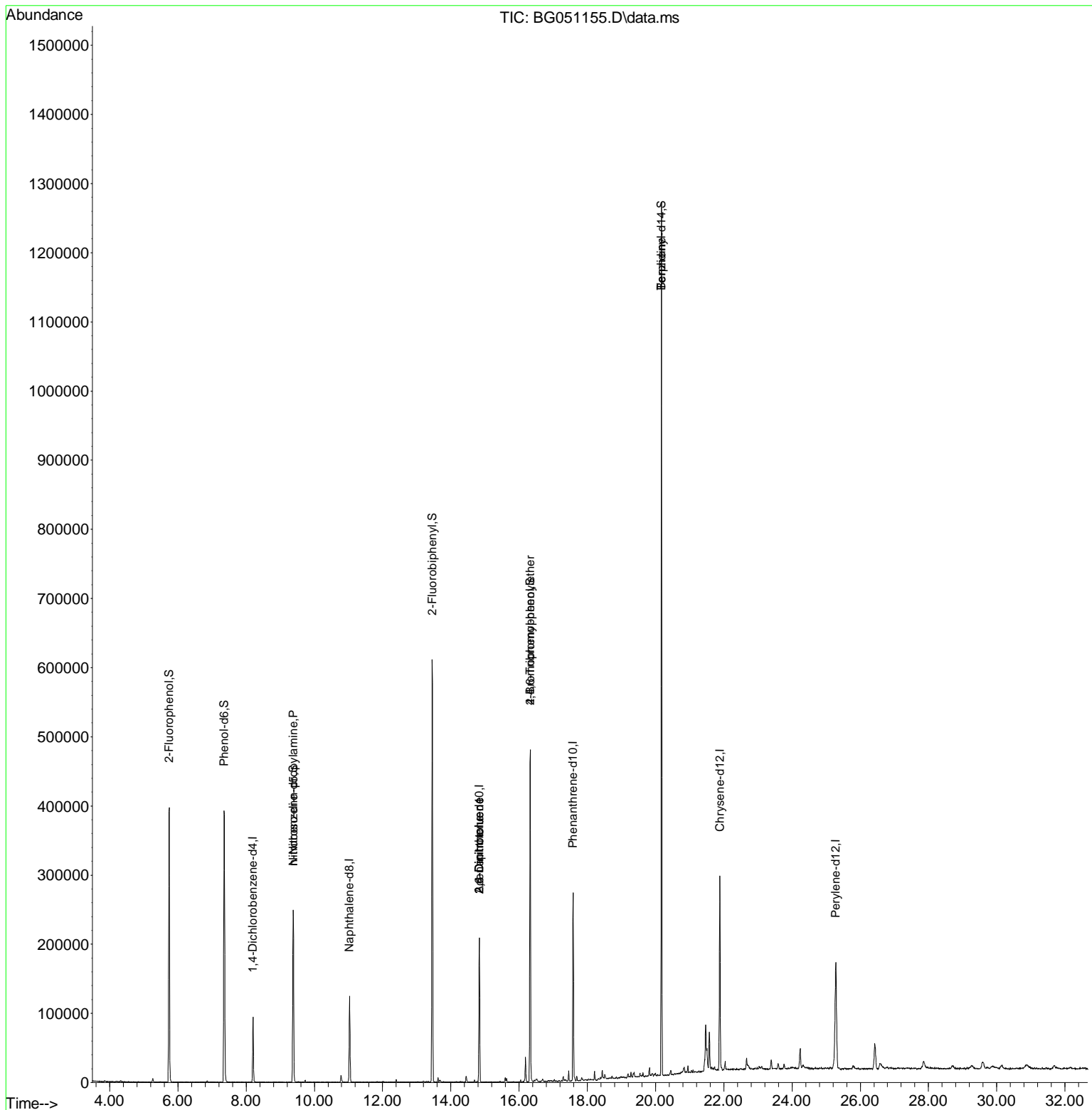
Internal Standards							
1) 1,4-Dichlorobenzene-d4	8.200	152	26707	20.00	ng	#-0.01	
21) Naphthalene-d8	11.032	136	109645	20.00	ng	# 0.00	
39) Acenaphthene-d10	14.833	164	72488	20.00	ng	0.00	
64) Phenanthrene-d10	17.583	188	169084	20.00	ng	# 0.00	
76) Chrysene-d12	21.884	240	171347	20.00	ng	# 0.00	
86) Perylene-d12	25.280	264	167729	20.00	ng	0.00	
System Monitoring Compounds							
5) 2-Fluorophenol	5.744	112	180446	104.45	ng	0.00	
7) Phenol-d6	7.354	99	238369	97.96	ng	-0.01	
23) Nitrobenzene-d5	9.381	82	168464	70.14	ng	0.00	
42) 2,4,6-Tribromophenol	16.325	330	81832	106.21	ng	0.00	
45) 2-Fluorobiphenyl	13.452	172	317646	66.12	ng	0.00	
79) Terphenyl-d14	20.174	244	582202	62.12	ng	0.00	
Target Compounds							
19) n-Nitrosodiphenylamine	9.381	70	23456	13.06	ng	# 66	
51) 2,6-Dinitrotoluene	14.833	165	9374	8.04	ng	# 10	
57) 2,4-Dinitrotoluene	14.833	165	9374	5.61	ng	# 15	
67) 4-Bromophenyl phenyl ether	16.325	248	6150	3.36	ng	# 1	
77) Benzidine	20.174	184	9709	3.45	ng	# 90	

(#) = qualifier out of range (m) = manual integration (+) = signals summed

Data Path : Z:\svoasrv\HPCHEM1\BNA_G\Data\BG112021\
 Data File : BG051155.D
 Acq On : 20 Nov 2021 19:58
 Operator : CG/JU
 Sample : M4758-33
 Misc :
 ALS Vial : 10 Sample Multiplier: 1

Instrument :
 BNA_G
 ClientSampleId :
 TP17

Quant Time: Nov 22 01:26:08 2021
 Quant Method : Z:\svoasrv\HPCHEM1\BNA_G\Methods\8270-BG111921.M
 Quant Title : ASP BNA STANDARDS FOR 5 POINT CALIBRATION
 QLast Update : Fri Nov 19 16:26:22 2021
 Response via : Initial Calibration



Abundance Scan 804 (8.211 min): BG051122.D\data.ms (-796)#(4)

1, 4-Di chlorobenzene-d4

Concen: 20.00 ng

RT: 8.200 min Scan# 8

Delta R.T. -0.011 min

Lab File: BG051155.D

Acq: 20 Nov 2021 19:58

Instrument :

BNA_G

ClientSampleId :

TP17

Ref



m/z-->

Tgt Ion: 152 Resp: 26707

Ion Ratio Lower Upper

152 100

150 156.4 119.4 179.0

115 59.7 60.2 90.4#

Abundance Scan 802 (8.200 min): BG051155.D\data.ms



m/z-->

Raw

Abundance



8.200

Time-->

Abundance Scan 802 (8.200 min): BG051155.D\data.ms (-787) (-)



m/z-->

Sub

Abundance Scan 384 (5.743 min): BG051122.D\data.ms (-377)#(5)

2-Fluorophenol

Concen: 104.45 ng

RT: 5.744 min Scan# 384

Delta R.T. 0.000 min

Lab File: BG051155.D

Acq: 20 Nov 2021 19:58

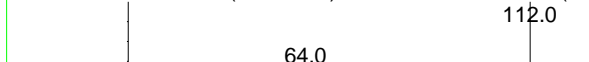
Tgt Ion: 112 Resp: 180446

Ion Ratio Lower Upper

112 100

64 63.4 46.7 70.1

63 34.5 35.3 52.9#

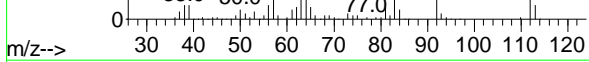


Ref

m/z-->

Raw

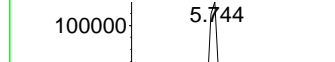
Abundance Scan 384 (5.744 min): BG051155.D\data.ms



m/z-->

Sub

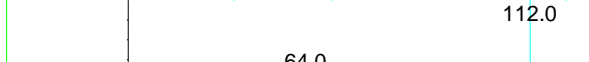
Abundance



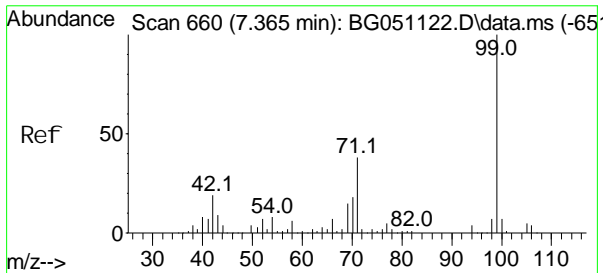
5.744

Time-->

Abundance Scan 384 (5.744 min): BG051155.D\data.ms (-294) (-)



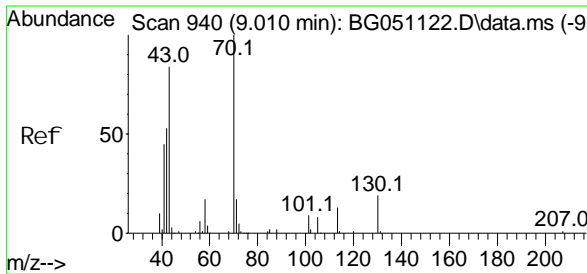
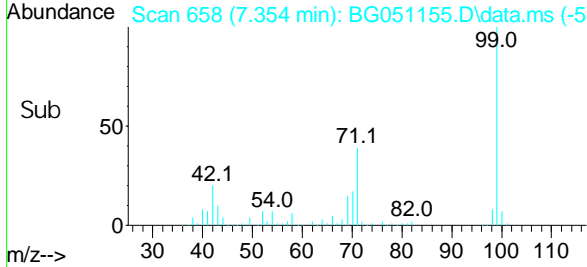
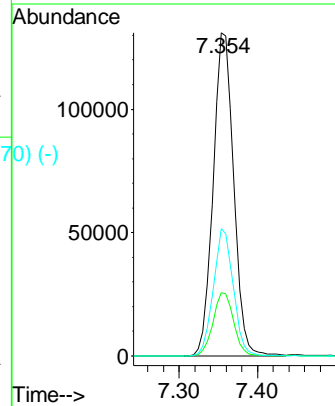
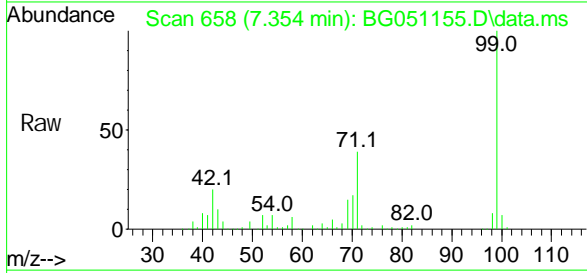
m/z-->



Phenol -d6
 Concen: 97.96 ng
 RT: 7.354 min Scan# 1000
 Delta R.T. -0.011 min
 Lab File: BG051155.D
 Acq: 20 Nov 2021 19:58

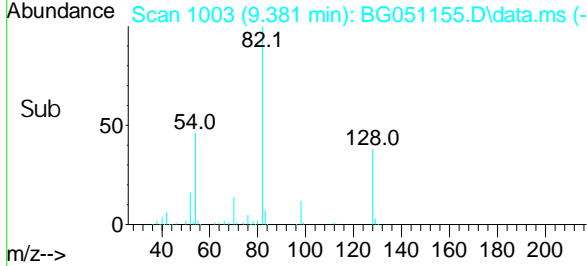
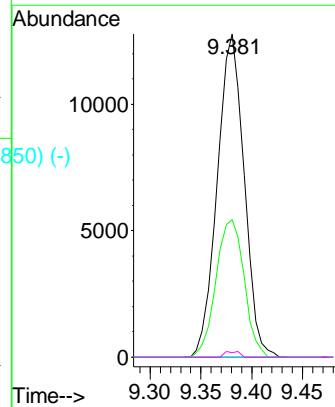
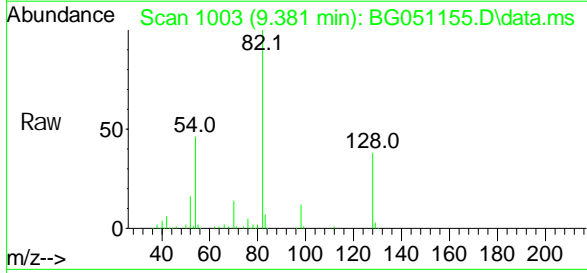
Instrument :
 BNA_G
ClientSampleId :
 TP17

Tgt Ion	Resp	Lower	Upper
99	100		
42	19.6	20.5	30.7#
71	39.3	41.5	62.3#

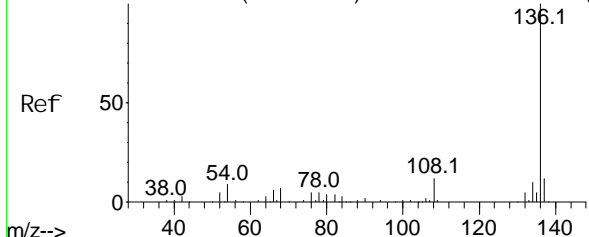


n-Nitrosodipropylamine
 Concen: 13.06 ng
 RT: 9.381 min Scan# 1003
 Delta R.T. 0.371 min
 Lab File: BG051155.D
 Acq: 20 Nov 2021 19:58

Tgt Ion	Resp	Lower	Upper
70	100		
42	42.6	54.5	81.7#
101	0.0	9.0	13.6#
130	1.4	17.0	25.6#

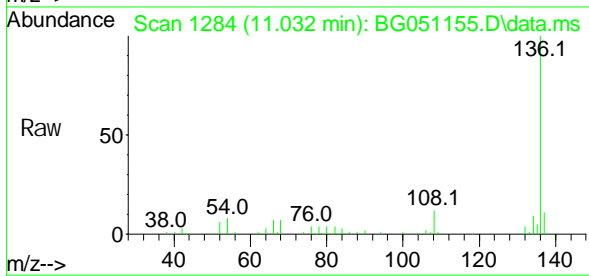


Abundance Scan 1285 (11.037 min): BG051122.D\data.ms (-1225) (-)



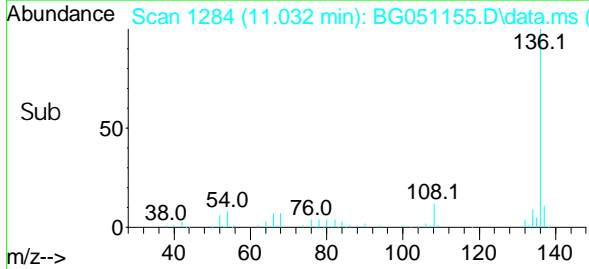
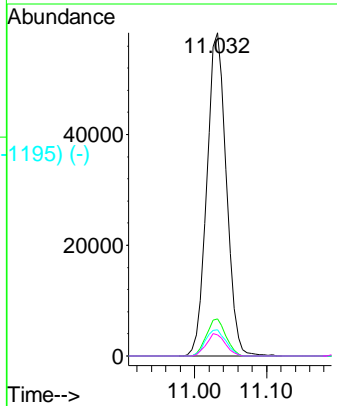
Naphthalene-d8
Concen: 20.00 ng
RT: 11.032 min Scan#
Delta R.T. -0.005 min
Lab File: BG051155.D
Acq: 20 Nov 2021 19:58

Instrument :
BNA_G
ClientSampleId :
TP17

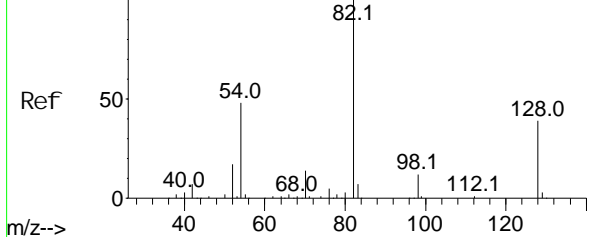


Tgt Ion: 136 Resp: 109645

Ion	Ratio	Lower	Upper
136	100		
137	11.4	8.2	12.2
54	8.1	5.5	8.3
68	6.5	2.3	3.5#



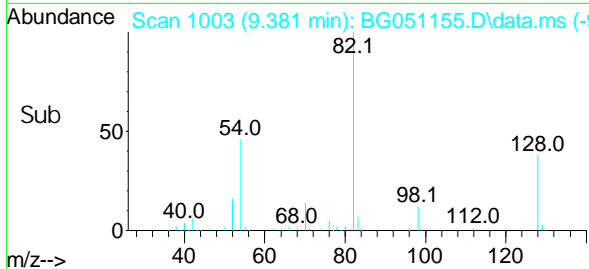
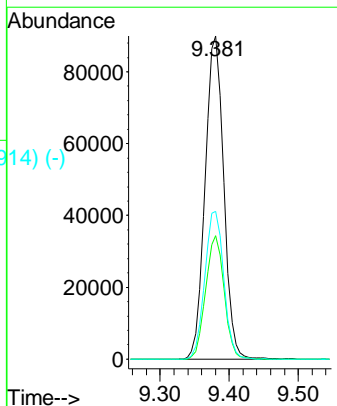
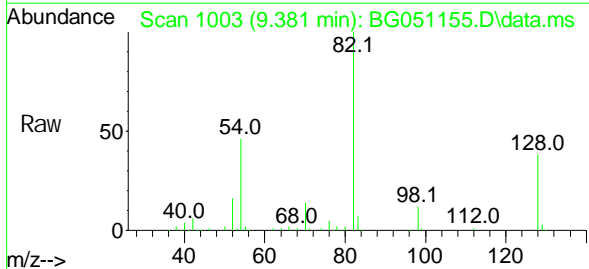
Abundance Scan 1004 (9.386 min): BG051122.D\data.ms (-996) (-)



Nitrobenzene-d5
Concen: 70.14 ng
RT: 9.381 min Scan# 1003
Delta R.T. -0.005 min
Lab File: BG051155.D
Acq: 20 Nov 2021 19:58

Tgt Ion: 82 Resp: 168464

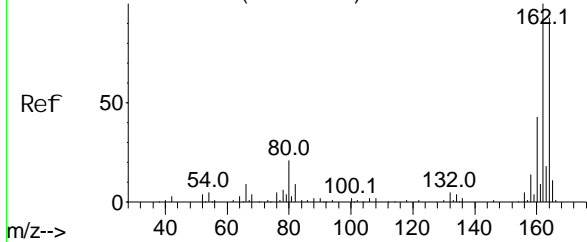
Ion	Ratio	Lower	Upper
82	100		
128	38.2	29.8	44.6
54	45.8	45.8	68.8#



Abundance Scan 1932 (14.838 min): BG051122.D\data.ms (-1926) (-)

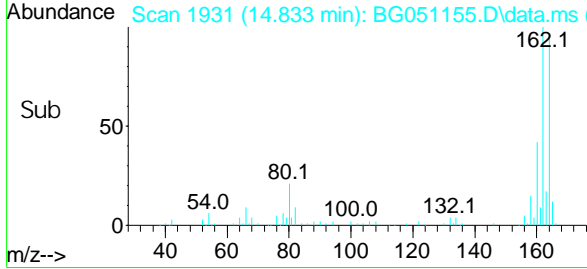
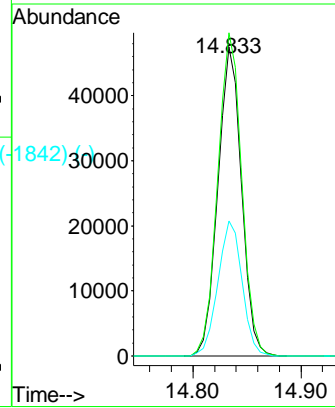
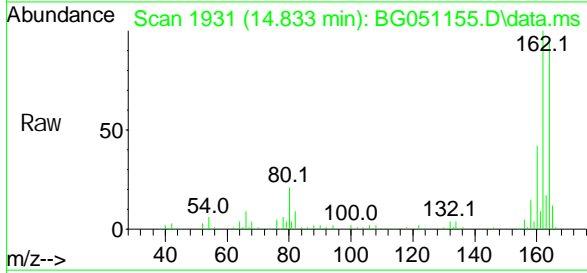
Acenaphthene-d10
Concen: 20.00 ng
RT: 14.833 min Scan#
Delta R.T. -0.005 min
Lab File: BG051155.D
Acq: 20 Nov 2021 19:58

Instrument :
BNA_G
ClientSampleId :
TP17



Tgt Ion: 164 Resp: 72488

Ion	Ratio	Lower	Upper
164	100		
162	104.5	81.4	122.0
160	43.7	34.9	52.3

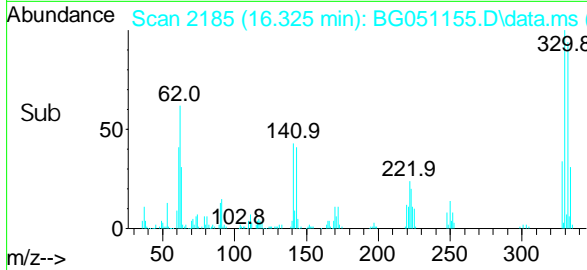
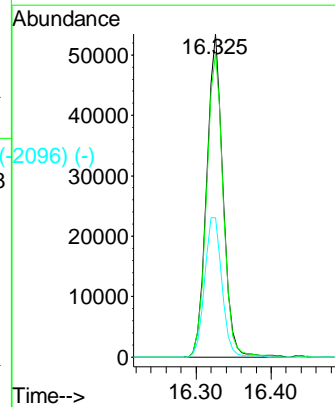
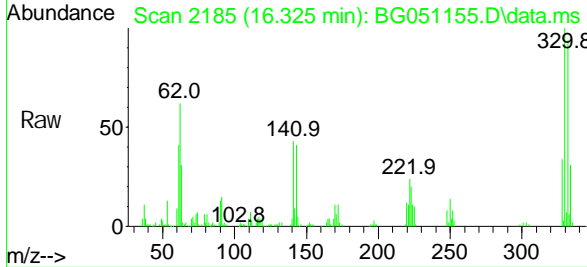
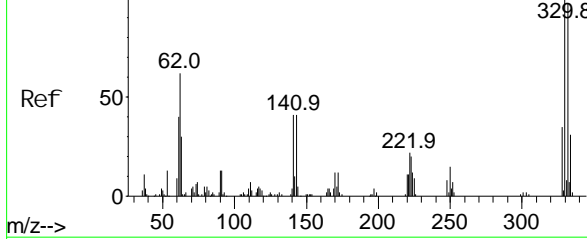


Abundance Scan 2186 (16.331 min): BG051122.D\data.ms (-2176) (-)

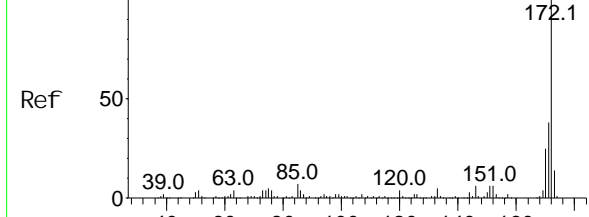
2,4,6-Tri bromophenol
Concen: 106.21 ng
RT: 16.325 min Scan# 2185
Delta R.T. -0.005 min
Lab File: BG051155.D
Acq: 20 Nov 2021 19:58

Tgt Ion: 330 Resp: 81832

Ion	Ratio	Lower	Upper
330	100		
332	96.0	77.3	115.9
141	45.8	35.6	53.4



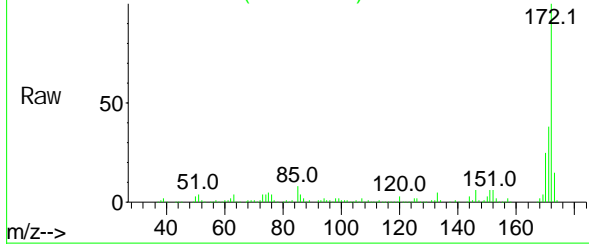
Abundance Scan 1697 (13.458 min): BG051122.D\data.ms (-1695) (-)



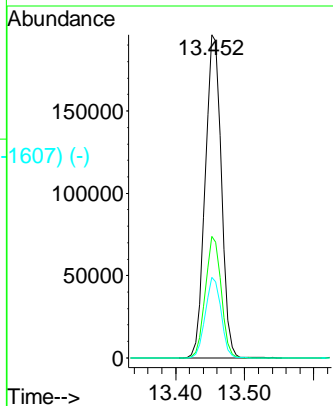
2-Fluorophenyl
Concn: 66.12 ng
RT: 13.452 min Scan#
Delta R.T. -0.005 min
Lab File: BG051155.D
Acq: 20 Nov 2021 19:58

Instrument :
BNA_G
ClientSampleId :
TP17

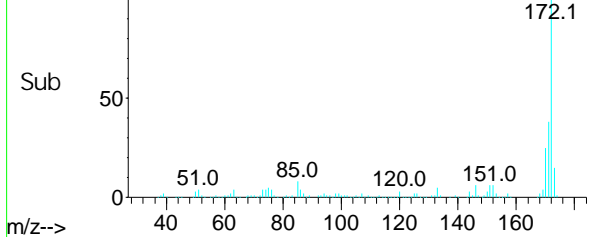
Abundance Scan 1696 (13.452 min): BG051155.D\data.ms



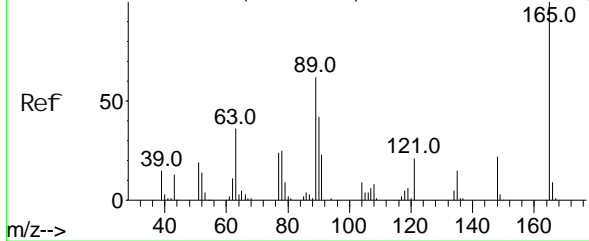
Tgt Ion: 172 Resp: 317646
Ion Ratio Lower Upper
172 100
171 37.6 28.6 43.0
170 24.9 18.6 27.8



Abundance Scan 1696 (13.452 min): BG051155.D\data.ms (-1607) (-)



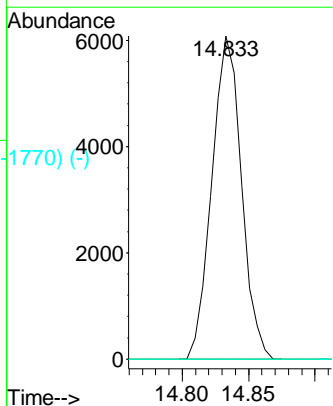
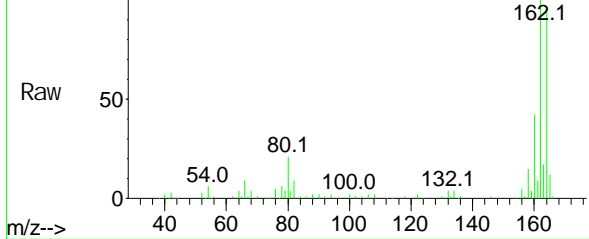
Abundance Scan 1860 (14.415 min): BG051122.D\data.ms (-1850) (-)



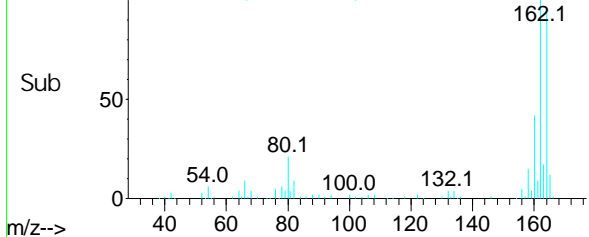
2,6-Dinitrotoluene
Concn: 8.04 ng
RT: 14.833 min Scan# 1931
Delta R.T. 0.418 min
Lab File: BG051155.D
Acq: 20 Nov 2021 19:58

Tgt Ion: 165 Resp: 9374
Ion Ratio Lower Upper
165 100
63 0.0 63.3 94.9#
89 0.0 63.4 95.0#

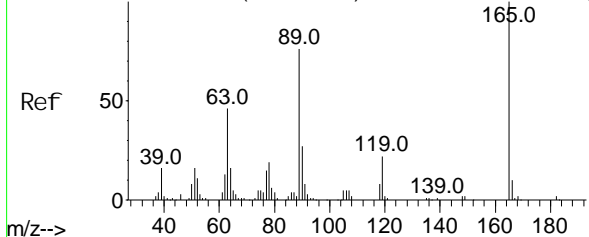
Abundance Scan 1931 (14.833 min): BG051155.D\data.ms



Abundance Scan 1931 (14.833 min): BG051155.D\data.ms (-1770) (-)



Abundance Scan 1994 (15.203 min): BG051122.D\data.ms (-1957) (-)



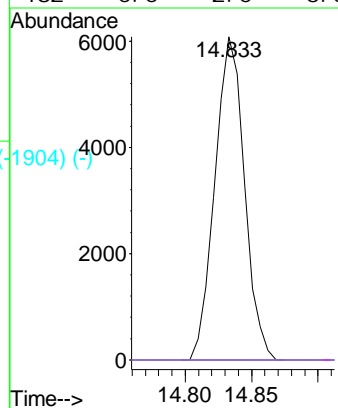
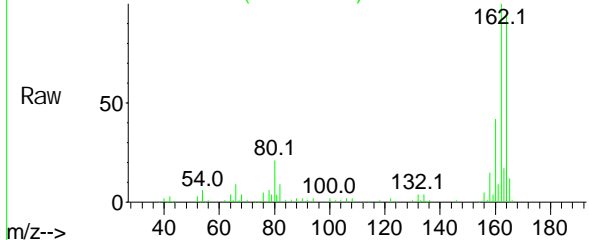
2, 4-Di ni troto l uene
Concen: 5. 61 ng
RT: 14. 833 mi n Scan#
Del ta R. T. -0. 370 mi n
Lab Fi le: BG051155. D
Acq: 20 Nov 2021 19: 58

Instrument :
BNA_G
ClientSampleId :
TP17

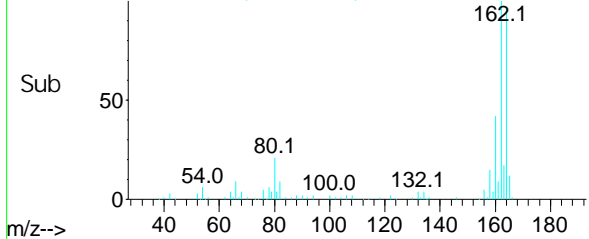
Tgt Ion: 165 Resp: 9374

Ion	Ratio	Lower	Upper
165	100		
63	0.0	48.0	72.0#
89	0.0	65.4	98.0#
182	0.0	2.0	3.0#

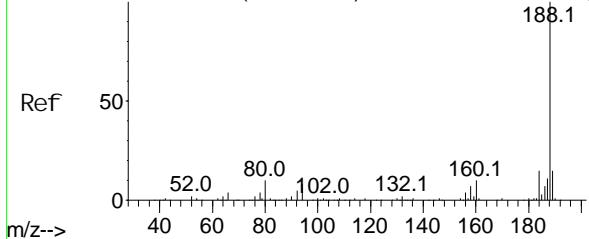
Abundance Scan 1931 (14.833 min): BG051155.D\data.ms



Abundance Scan 1931 (14.833 min): BG051155.D\data.ms (-1904) (-)



Abundance Scan 2400 (17.588 min): BG051122.D\data.ms (-2362) (-)

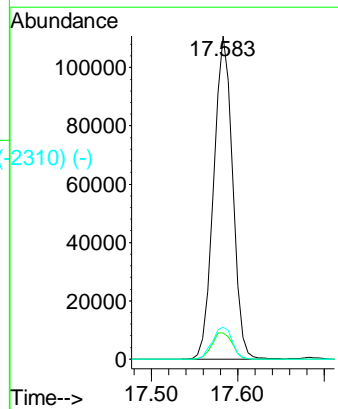
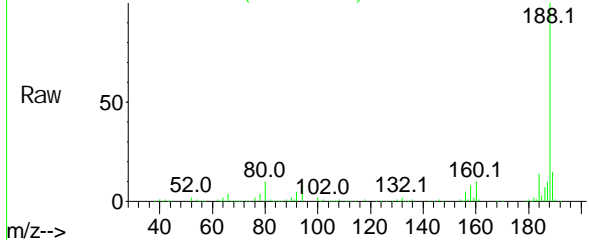


Phenanthrene-d10
Concen: 20.00 ng
RT: 17. 583 mi n Scan# 2399
Del ta R. T. -0. 005 mi n
Lab Fi le: BG051155. D
Acq: 20 Nov 2021 19: 58

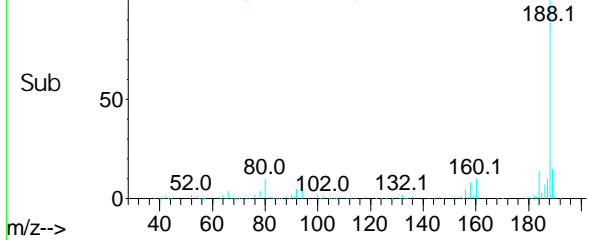
Tgt Ion: 188 Resp: 169084

Ion	Ratio	Lower	Upper
188	100		
94	8.2	5.4	8.0#
80	9.8	3.7	5.5#

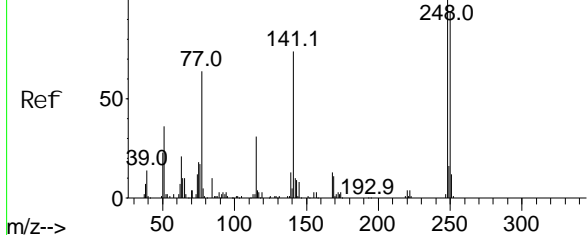
Abundance Scan 2399 (17.583 min): BG051155.D\data.ms



Abundance Scan 2399 (17.583 min): BG051155.D\data.ms (-2310) (-)



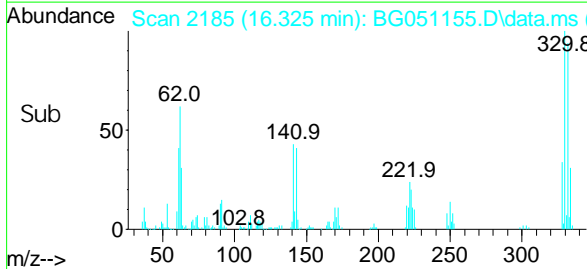
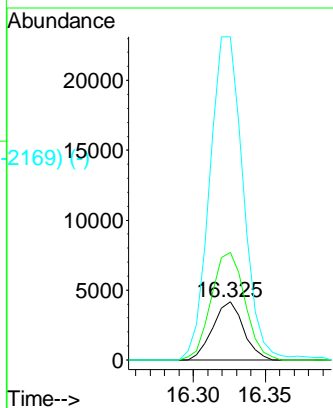
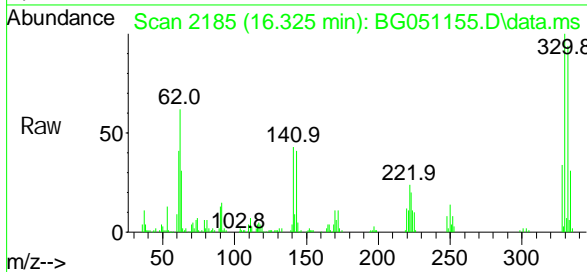
Abundance Scan 2259 (16.760 min): BG051122.D\data.ms (-2259) (-)



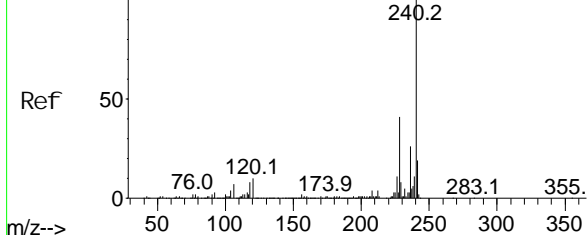
4-Bromophenyl -phenyl ether
Concen: 3.36 ng
RT: 16.325 min Scan# 2185
Delta R.T. -0.434 min
Lab File: BG051155.D
Acq: 20 Nov 2021 19:58

Instrument :
BNA_G
ClientSampleId :
TP17

Tgt Ion: 248 Resp: 6150
Ion Ratio Lower Upper
248 100
250 185.5 76.1 114.1#
141 557.1 65.4 98.2#

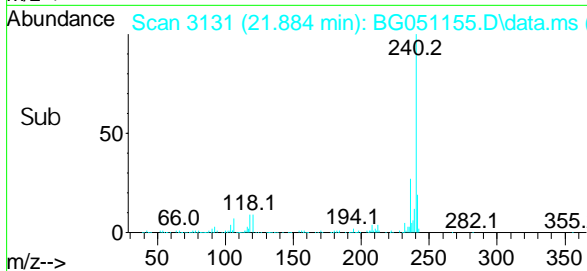
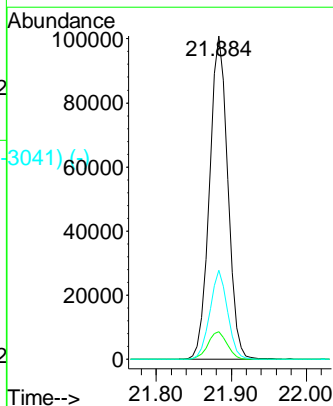
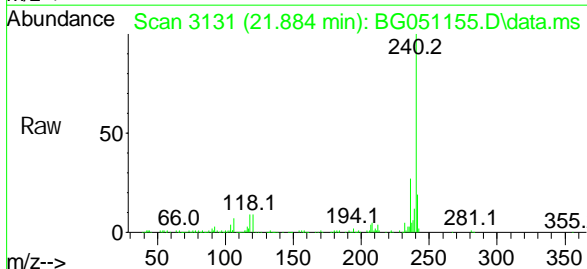


Abundance Scan 3131 (21.883 min): BG051122.D\data.ms (-3131) (-)

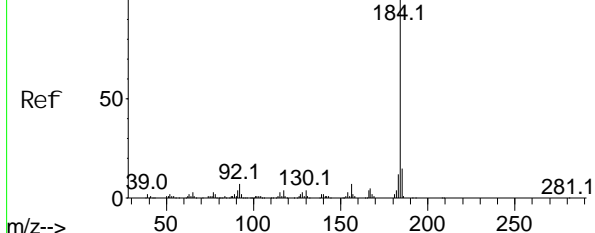


Chrysene-d12
Concen: 20.00 ng
RT: 21.884 min Scan# 3131
Delta R.T. 0.000 min
Lab File: BG051155.D
Acq: 20 Nov 2021 19:58

Tgt Ion: 240 Resp: 171347
Ion Ratio Lower Upper
240 100
120 8.6 4.2 6.2#
236 27.5 21.8 32.6



Abundance Scan 2777 (19.803 min): BG051122.D\data.ms (-2770) (-)



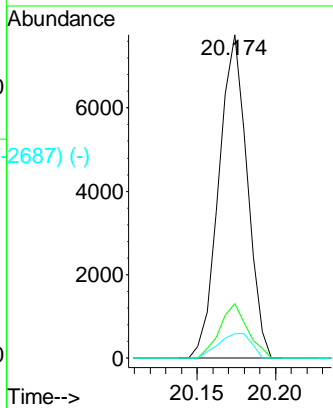
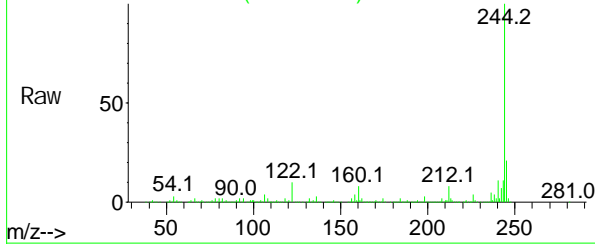
Benzi di ne
Concen: 3.45 ng
RT: 20.174 min Scan# 2770
Del ta R.T. 0.371 min
Lab Fi le: BG051155.D
Acq: 20 Nov 2021 19:58

Instrument :
BNA_G
ClientSampleId :
TP17

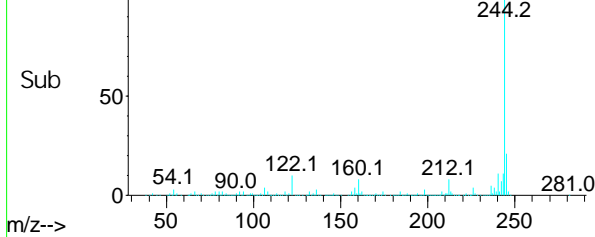
Tgt Ion: 184 Resp: 9709

Ion	Ratio	Lower	Upper
184	100		
185	16.7	10.7	16.1#
183	7.5	9.4	14.0#

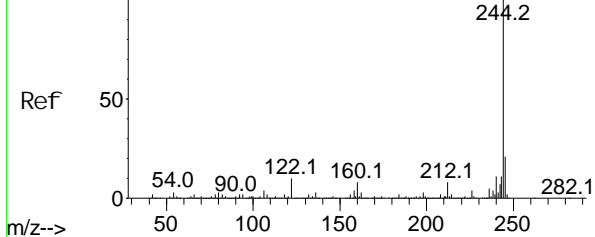
Abundance Scan 2840 (20.174 min): BG051155.D\data.ms



Abundance Scan 2840 (20.174 min): BG051155.D\data.ms (-2687) (-)



Abundance Scan 2840 (20.173 min): BG051122.D\data.ms (-2639) (-)

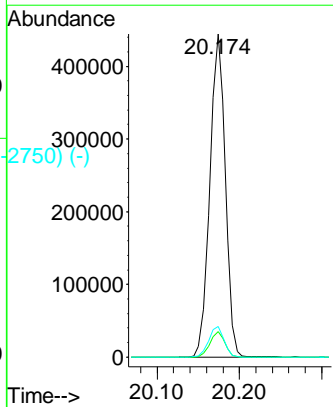
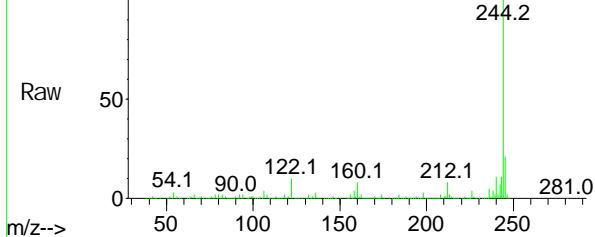


Terphenyl -d14
Concen: 62.12 ng
RT: 20.174 min Scan# 2840
Del ta R.T. 0.000 min
Lab Fi le: BG051155.D
Acq: 20 Nov 2021 19:58

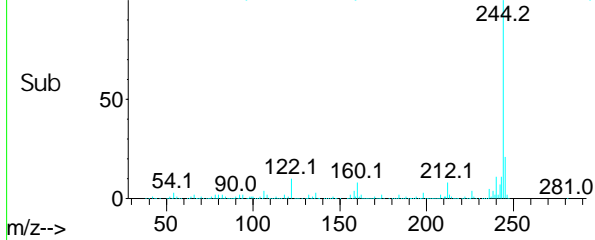
Tgt Ion: 244 Resp: 582202

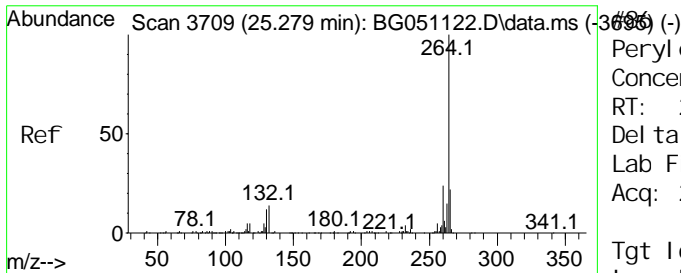
Ion	Ratio	Lower	Upper
244	100		
212	7.8	6.9	10.3
122	9.5	5.0	7.6#

Abundance Scan 2840 (20.174 min): BG051155.D\data.ms



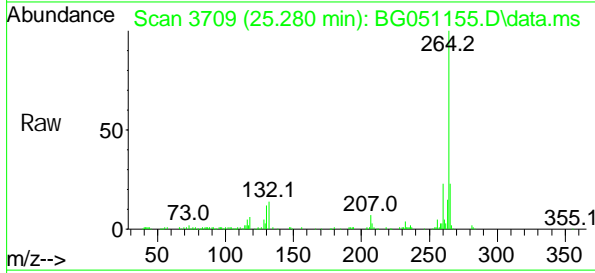
Abundance Scan 2840 (20.174 min): BG051155.D\data.ms (-2750) (-)





Perylene-d12
 Concen: 20.00 ng
 RT: 25.280 min Scan# 1
 Delta R.T. 0.000 min
 Lab File: BG051155.D
 Acq: 20 Nov 2021 19:58

Instrument :
 BNA_G
 ClientSampleId :
 TP17



Tgt Ion: 264 Resp: 167729

Ion	Ratio	Lower	Upper
264	100		
260	23.0	19.4	29.2
265	22.6	16.9	25.3

