

Data Path : Z:\HPCHEM1\BNA_G\DATA\BG112216\
 Data File : BG024898.D
 Acq On : 22 Nov 2016 21:11
 Operator : UM/SJ
 Sample : H5699-23
 Misc :
 ALS Vial : 14 Sample Multiplier: 1

Instrument :
 BNA_G
 ClientSampleId :
 A4WF1

Integration Parameters: LSCINT.P

Integrator: RTE
 Smoothing : ON
 Sampling : 1
 Start Thrs: 0.1
 Stop Thrs : 0

Filtering: 5
 Min Area: 0.1 % of largest Peak
 Max Peaks: 100
 Peak Location: TOP

If leading or trailing edge < 100 prefer < Baseline drop else tangent >
 Peak separation: 1

Method : Z:\HPCHEM1\BNA_G\METHODS\SOM02.2-EPA-BG111416.M
 Title : SVOA CALIBRATION

Signal : TIC

peak #	R.T. min	first scan	max scan	last scan	PK TY	peak height	corr. area	corr. % max.	% of total
1	3.297	77	78	80	rBV2	8590	8181	0.25%	0.028%
2	3.609	129	131	141	rVB5	10292	21264	0.64%	0.074%
3	3.685	141	144	148	rBV3	7327	8903	0.27%	0.031%
4	4.373	256	261	265	rBV5	6693	13446	0.41%	0.046%
5	4.960	359	361	366	rVB4	6807	7499	0.23%	0.026%
6	5.036	366	374	376	rBV6	5475	12222	0.37%	0.042%
7	5.236	402	408	409	rBV5	5727	9596	0.29%	0.033%
8	5.577	463	466	471	rVB5	9155	10271	0.31%	0.036%
9	5.642	473	477	479	rVB2	4296	6625	0.20%	0.023%
10	5.700	482	487	490	rBV7	4087	8032	0.24%	0.028%
11	6.035	541	544	548	rBV4	6842	8428	0.25%	0.029%
12	6.394	602	605	608	rBV4	4542	7964	0.24%	0.028%
13	6.582	634	637	641	rBV4	5973	9956	0.30%	0.034%
14	7.028	708	713	716	rBV4	4635	6596	0.20%	0.023%
15	7.075	717	721	724	rVV4	4130	7549	0.23%	0.026%
16	7.105	724	726	728	rVB3	8431	7463	0.23%	0.026%
17	7.140	728	732	734	rBV4	8201	10259	0.31%	0.035%
18	7.234	744	748	750	rBV3	4723	7220	0.22%	0.025%
19	7.387	767	774	782	rVB2	76042	144720	4.37%	0.500%
20	7.563	796	804	816	rVB	240786	413362	12.47%	1.429%
21	7.663	816	821	822	rBV3	5138	7824	0.24%	0.027%
22	7.774	831	840	852	rVV	262908	477260	14.40%	1.650%
23	7.863	852	855	861	rVB5	6117	11030	0.33%	0.038%
24	8.250	913	921	930	rBV2	284213	508268	15.33%	1.757%
25	8.321	930	933	935	rBV3	4941	7041	0.21%	0.024%
26	8.350	936	938	942	rVV4	5249	7104	0.21%	0.025%
27	8.509	961	965	969	rVV3	4894	7702	0.23%	0.027%
28	8.944	1032	1039	1048	rBV2	231612	407234	12.29%	1.408%
29	9.120	1062	1069	1070	rVB5	6418	9936	0.30%	0.034%
30	9.261	1088	1093	1095	rVB2	6044	8315	0.25%	0.029%
31	9.425	1112	1121	1131	rBV2	344633	639340	19.29%	2.210%
32	9.549	1137	1142	1149	rVB6	7919	20127	0.61%	0.070%
33	9.766	1175	1179	1184	rVB5	9063	11591	0.35%	0.040%
34	9.895	1193	1201	1205	rBV7	5074	13443	0.41%	0.046%

Data Path : Z:\HPCHEM1\BNA_G\DATA\BG112216\
 Data File : BG024898.D
 Acq On : 22 Nov 2016 21:11
 Operator : UM/SJ
 Sample : H5699-23
 Misc :
 ALS Vial : 14 Sample Multiplier: 1

Instrument :
 BNA_G
 ClientSampleId :
 A4WF1

Integration Parameters: LSCINT.P

Integrator: RTE
 Smoothing : ON
 Sampling : 1
 Start Thrs: 0.1
 Stop Thrs : 0

Filtering: 5
 Min Area: 0.1 % of largest Peak
 Max Peaks: 100
 Peak Location: TOP

If leading or trailing edge < 100 prefer < Baseline drop else tangent >
 Peak separation: 1

Method : Z:\HPCHEM1\BNA_G\METHODS\SOM02.2-EPA-BG111416.M
 Title : SVOA CALIBRATION

35	10.013	1218	1221	1224	rVB4	6448	7188	0.22%	0.025%
36	10.154	1237	1245	1254	rVV	302989	581749	17.55%	2.011%
37	10.225	1254	1257	1265	rVB6	5691	12154	0.37%	0.042%
38	10.689	1328	1336	1345	rBV	423201	790297	23.84%	2.732%
39	10.947	1379	1380	1385	rVB3	5896	6581	0.20%	0.023%
40	11.076	1391	1402	1410	rBV	391189	743264	22.42%	2.570%
41	11.147	1410	1414	1418	rVB4	4482	7551	0.23%	0.026%
42	11.223	1420	1427	1431	rBV7	5305	9425	0.28%	0.033%
43	11.335	1444	1446	1450	rVB3	6114	6554	0.20%	0.023%
44	11.429	1457	1462	1464	rBV4	4710	7088	0.21%	0.025%
45	11.564	1479	1485	1487	rBV4	7173	11462	0.35%	0.040%
46	11.693	1506	1507	1516	rBV4	4100	9683	0.29%	0.033%
47	11.811	1526	1527	1532	rVB5	5977	7823	0.24%	0.027%
48	12.052	1564	1568	1573	rBV7	5937	6858	0.21%	0.024%
49	12.240	1593	1600	1602	rBV5	7743	8741	0.26%	0.030%
50	12.316	1610	1613	1619	rBV5	4323	7903	0.24%	0.027%
51	12.381	1619	1624	1630	rBV6	5522	10251	0.31%	0.035%
52	12.639	1663	1668	1678	rVB5	12107	23707	0.72%	0.082%
53	12.857	1702	1705	1710	rBV5	5014	7931	0.24%	0.027%
54	13.209	1762	1765	1771	rVB8	8099	10462	0.32%	0.036%
55	13.297	1778	1780	1784	rBV5	5736	8010	0.24%	0.028%
56	13.462	1804	1808	1813	rVB6	9548	11388	0.34%	0.039%
57	13.732	1847	1854	1860	rVB5	22643	45208	1.36%	0.156%
58	13.785	1860	1863	1866	rBV3	5374	7576	0.23%	0.026%
59	14.261	1937	1944	1957	rVB	1039995	1563843	47.18%	5.407%
60	14.490	1976	1983	1986	rBV6	6261	14358	0.43%	0.050%
61	14.566	1988	1996	2004	rBV	947307	1597347	48.19%	5.523%
62	14.872	2036	2048	2055	rBV	751460	1237391	37.33%	4.278%
63	15.054	2072	2079	2095	rVB2	102383	213959	6.46%	0.740%
64	15.160	2095	2097	2101	rBV4	6167	7903	0.24%	0.027%
65	15.195	2101	2103	2107	rBV3	5054	7148	0.22%	0.025%
66	15.266	2113	2115	2120	rVB4	6824	8132	0.25%	0.028%
67	15.653	2179	2181	2185	rVB4	7830	11002	0.33%	0.038%
68	15.759	2196	2199	2204	rBV4	11883	13739	0.41%	0.048%
69	15.859	2204	2216	2226	rBV	1412915	2244267	67.71%	7.759%
70	15.971	2226	2235	2243	rBV	618688	972517	29.34%	3.362%
71	16.094	2249	2256	2264	rVB10	22015	43835	1.32%	0.152%

Data Path : Z:\HPCHEM1\BNA_G\DATA\BG112216\
 Data File : BG024898.D
 Acq On : 22 Nov 2016 21:11
 Operator : UM/SJ
 Sample : H5699-23
 Misc :
 ALS Vial : 14 Sample Multiplier: 1

Instrument :
 BNA_G
 ClientSampleId :
 A4WF1

Integration Parameters: LSCINT.P

Integrator: RTE
 Smoothing : ON Filtering: 5
 Sampling : 1 Min Area: 0.1 % of largest Peak
 Start Thrs: 0.1 Max Peaks: 100
 Stop Thrs : 0 Peak Location: TOP

If leading or trailing edge < 100 prefer < Baseline drop else tangent >
 Peak separation: 1

Method : Z:\HPCHEM1\BNA_G\METHODS\SOM02.2-EPA-BG111416.M
 Title : SVOA CALIBRATION

72	16.717	2357	2362	2367	rBV5	6245	12015	0.36%	0.042%
73	16.805	2372	2377	2380	rBV6	8065	13609	0.41%	0.047%
74	17.005	2406	2411	2415	rBV7	10489	19067	0.58%	0.066%
75	17.075	2421	2423	2429	rVB6	6727	11248	0.34%	0.039%
76	17.134	2430	2433	2438	rVB6	7487	11459	0.35%	0.040%
77	17.210	2443	2446	2449	rVB5	7052	6899	0.21%	0.024%
78	17.263	2452	2455	2457	rVB3	8476	8051	0.24%	0.028%
79	17.404	2477	2479	2484	rVB5	15031	18513	0.56%	0.064%
80	17.457	2484	2488	2489	rBV4	6063	8223	0.25%	0.028%
81	17.504	2495	2496	2501	rBV4	5898	7325	0.22%	0.025%
82	17.610	2506	2514	2524	rBV	1098724	1798203	54.25%	6.217%
83	17.710	2524	2531	2541	rBV	1682276	2697896	81.40%	9.328%
84	17.868	2551	2558	2561	rVB6	7718	12352	0.37%	0.043%
85	18.057	2589	2590	2592	rBV2	8025	7122	0.21%	0.025%
86	18.380	2642	2645	2648	rBV4	8318	7065	0.21%	0.024%
87	18.450	2654	2657	2660	rVB5	11099	7089	0.21%	0.025%
88	18.538	2667	2672	2678	rBV4	14664	27890	0.84%	0.096%
89	18.809	2714	2718	2719	rBV3	8981	10697	0.32%	0.037%
90	18.979	2746	2747	2750	rBV3	9364	7190	0.22%	0.025%
91	19.102	2765	2768	2772	rBV6	11799	14969	0.45%	0.052%
92	19.143	2772	2775	2781	rVB7	14348	24946	0.75%	0.086%
93	19.185	2781	2782	2784	rBV2	10747	8118	0.24%	0.028%
94	19.619	2852	2856	2861	rBV2	35694	47548	1.43%	0.164%
95	19.790	2882	2885	2888	rVB5	15907	16847	0.51%	0.058%
96	19.878	2895	2900	2907	rVB5	22684	41755	1.26%	0.144%
97	19.984	2911	2918	2925	rBV	2226220	3314470	100.00%	11.459%
98	21.905	3238	3245	3255	rVB	1275679	2209871	66.67%	7.640%
99	25.089	3776	3787	3805	rBV2	1033265	3193241	96.34%	11.040%
100	25.330	3818	3828	3843	rVB2	717564	2210342	66.69%	7.642%

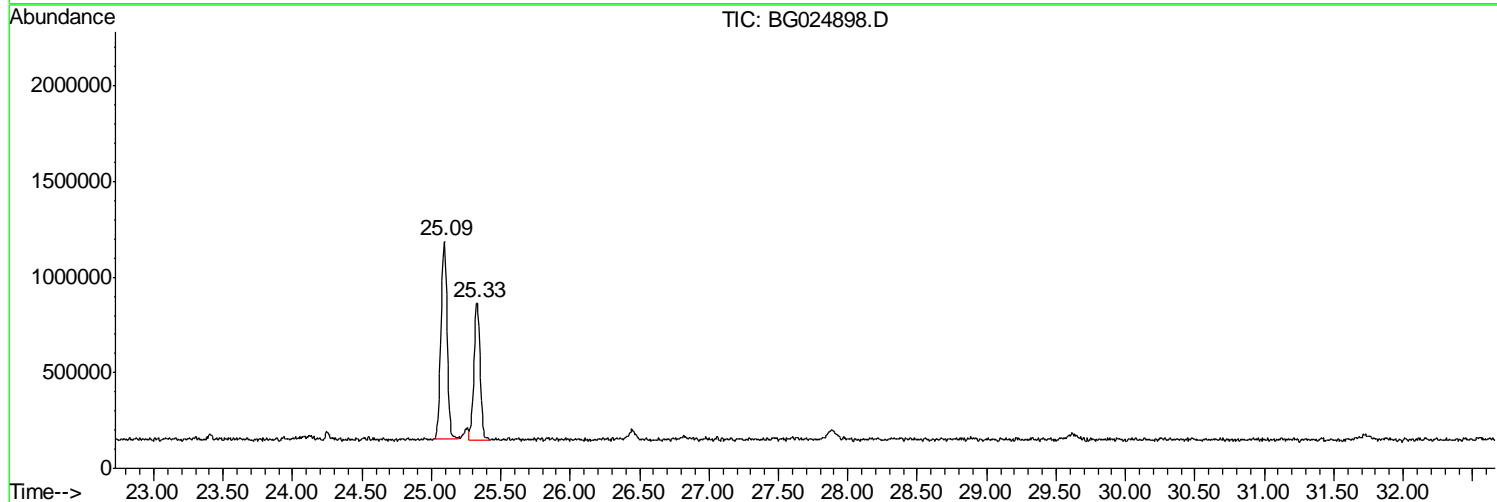
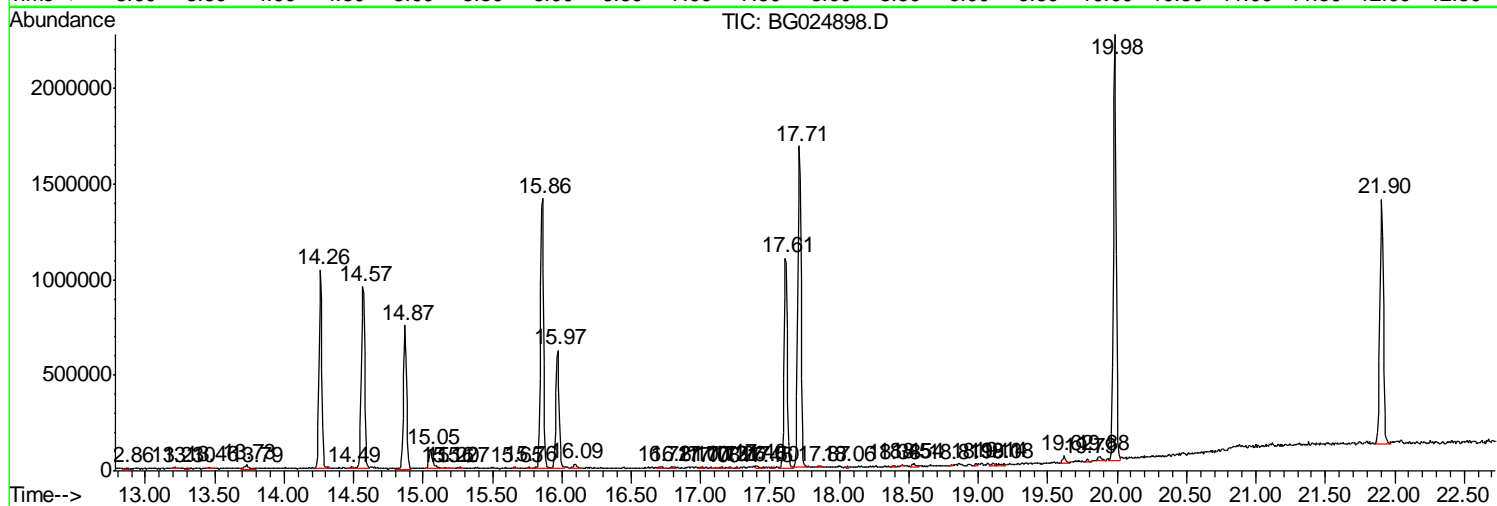
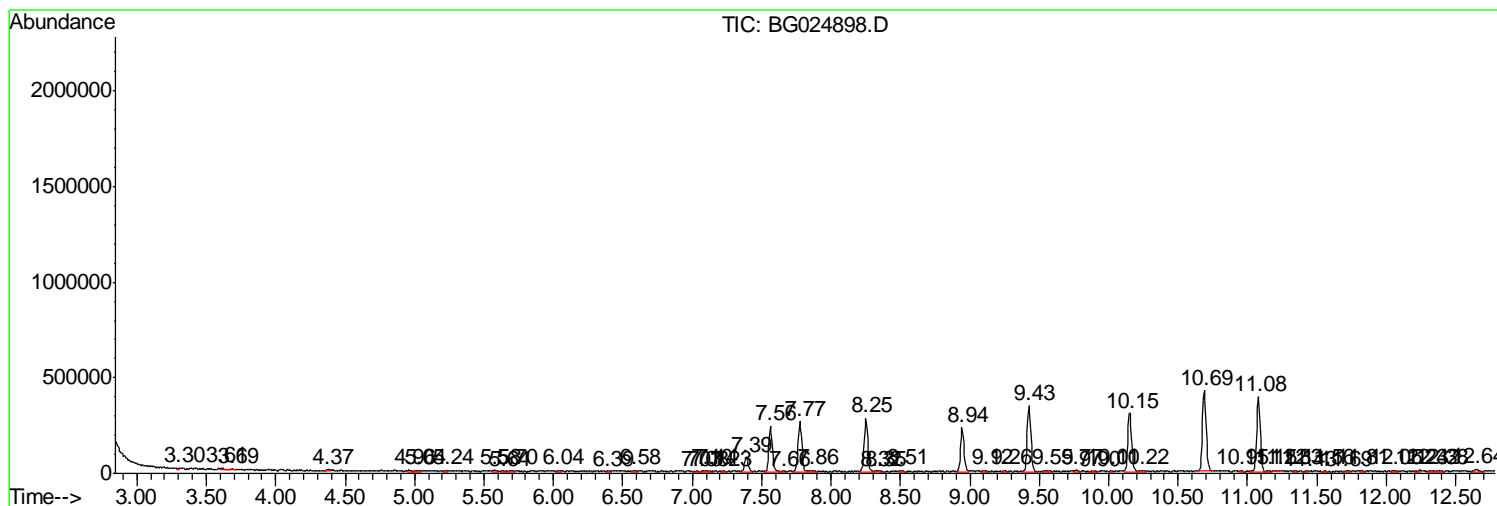
Sum of corrected areas: 28924086

Data Path : Z:\HPCHEM1\BNA_G\DATA\BG112216\
 Data File : BG024898.D
 Acq On : 22 Nov 2016 21:11
 Operator : UM/SJ
 Sample : H5699-23
 Misc :
 ALS Vial : 14 Sample Multiplier: 1

Instrument :
 BNA_G
 ClientSampleId :
 A4WF1

Quant Method : Z:\HPCHEM1\BNA_G\METHODS\SOM02.2-EPA-BG111416.M
 Quant Title : SVOA CALIBRATION

TIC Library : C:\DATABASE\NIST11.L
 TIC Integration Parameters: LSCINT.P



Data Path : Z:\HPCHEM1\BNA_G\DATA\BG112216\
Data File : BG024898.D
Acq On : 22 Nov 2016 21:11
Operator : UM/SJ
Sample : H5699-23
Misc :
ALS Vial : 14 Sample Multiplier: 1

Instrument :
BNA_G
ClientSampleId :
A4WF1

Quant Method : Z:\HPCHEM1\BNA_G\METHODS\SOM02.2-EPA-BG111416.M
Quant Title : SVOA CALIBRATION

TIC Library : C:\DATABASE\NIST11.L
TIC Integration Parameters: LSCINT.P

No Library Search Compounds Detected

Data Path : Z:\HPCHEM1\BNA_G\DATA\BG112216\
Data File : BG024898.D
Acq On : 22 Nov 2016 21:11
Operator : UM/SJ
Sample : H5699-23
Misc :
ALS Vial : 14 Sample Multiplier: 1

Instrument :
BNA_G
ClientSampleId :
A4WF1

Quant Method : Z:\HPCHEM1\BNA_G\METHODS\SOM02.2-EPA-BG111416.M
Quant Title : SVOA CALIBRATION

TIC Library : C:\DATABASE\NIST11.L
TIC Integration Parameters: LSCINT.P

TIC Top Hit name	RT	EstConc	Units	Response	--Internal Standard--			
					#	RT	Resp	Conc
