

Data Path : Z:\svoasrv\HPCHEM1\BNA_G\Data\BG112224\
 Data File : BG063523.D
 Acq On : 22 Nov 2024 17:07
 Operator : RC/JU
 Sample : P4943-04
 Misc :
 ALS Vial : 13 Sample Multiplier: 1

Instrument :
 BNA_G
 ClientSampleId :
 C0TD7

Integration Parameters: LSCINT.P

Integrator: RTE
 Smoothing : OFF Filtering: 5
 Sampling : 1 Min Area: 0.1 % of largest Peak
 Start Thrs: 0.2 Max Peaks: 100
 Stop Thrs : 0 Peak Location: TOP

If leading or trailing edge < 100 prefer < Baseline drop else tangent >
 Peak separation: 5

Method : Z:\svoasrv\HPCHEM1\BNA_G\Methods\SFAM-EPA-BG112024.MA.M
 Title : SVOA CALIBRATION

Signal : TIC: BG063523.D\data.ms

peak #	R.T. min	first scan	max scan	last scan	PK TY	peak height	corr. area	corr. % max.	% of total
1	3.295	33	35	41	rVB3	18432	22121	0.81%	0.080%
2	3.559	78	80	82	rBV2	5533	4727	0.17%	0.017%
3	3.712	103	106	111	rBV2	20611	33056	1.21%	0.119%
4	4.041	160	162	168	rVB5	8402	11761	0.43%	0.042%
5	4.470	233	235	240	rBV4	7775	9564	0.35%	0.034%
6	4.582	250	254	257	rBV6	3886	5723	0.21%	0.021%
7	4.822	292	295	296	rBV3	4982	4285	0.16%	0.015%
8	5.586	423	425	427	rBV2	5839	5708	0.21%	0.021%
9	7.008	659	667	680	rVB	286640	523570	19.21%	1.886%
10	7.161	687	693	703	rVB	221950	363776	13.35%	1.310%
11	7.366	720	728	737	rVV	280561	488203	17.92%	1.758%
12	7.531	753	756	758	rBV2	6353	4487	0.16%	0.016%
13	7.601	764	768	770	rBV2	3566	6045	0.22%	0.022%
14	7.831	800	807	817	rBV	356741	624781	22.93%	2.250%
15	8.101	852	853	857	rVB3	4764	4744	0.17%	0.017%
16	8.542	922	928	938	rBV	383785	649629	23.84%	2.340%
17	8.683	948	952	954	rBV2	5227	5985	0.22%	0.022%
18	8.759	963	965	967	rBV2	5287	5475	0.20%	0.020%
19	8.982	994	1003	1012	rBV	292099	527190	19.35%	1.899%
20	9.111	1022	1025	1028	rVB4	5228	6178	0.23%	0.022%
21	9.411	1072	1076	1080	rVB4	7777	11235	0.41%	0.040%
22	9.546	1095	1099	1104	rBV3	17988	32302	1.19%	0.116%
23	9.705	1118	1126	1135	rBV2	246822	462495	16.97%	1.666%
24	9.828	1145	1147	1150	rVB	4204	4800	0.18%	0.017%
25	10.046	1181	1184	1187	rVB2	4765	6545	0.24%	0.024%
26	10.251	1211	1219	1228	rBV	363742	689124	25.29%	2.482%
27	10.398	1241	1244	1246	rBV3	4343	4616	0.17%	0.017%
28	10.616	1274	1281	1289	rBV	492080	893952	32.81%	3.219%
29	10.757	1299	1305	1314	rBV	286005	540636	19.84%	1.947%
30	10.915	1328	1332	1333	rBV2	4201	4549	0.17%	0.016%
31	10.998	1343	1346	1348	rBV2	3457	4408	0.16%	0.016%
32	11.174	1374	1376	1379	rBV3	5378	5893	0.22%	0.021%
33	11.415	1414	1417	1420	rBV3	3785	5090	0.19%	0.018%
34	11.591	1444	1447	1448	rVB2	4274	4297	0.16%	0.015%
35	11.632	1453	1454	1458	rVB2	5060	5106	0.19%	0.018%
36	12.032	1520	1522	1525	rBV2	3862	4692	0.17%	0.017%

Data Path : Z:\svoasrv\HPCHEM1\BNA_G\Data\BG112224\
 Data File : BG063523.D
 Acq On : 22 Nov 2024 17:07
 Operator : RC/JU
 Sample : P4943-04
 Misc :
 ALS Vial : 13 Sample Multiplier: 1

Instrument :
 BNA_G
 ClientSampleId :
 C0TD7

Integration Parameters: LSCINT.P

Integrator: RTE
 Smoothing : OFF Filtering: 5
 Sampling : 1 Min Area: 0.1 % of largest Peak
 Start Thrs: 0.2 Max Peaks: 100
 Stop Thrs : 0 Peak Location: TOP

If leading or trailing edge < 100 prefer < Baseline drop else tangent >
 Peak separation: 5

Method : Z:\svoasrv\HPCHEM1\BNA_G\Methods\SFAM-EPA-BG112024.MA.M
 Title : SVOA CALIBRATION

37	12.208	1550	1552	1553	rBV2	5744	4632	0.17%	0.017%
38	12.225	1553	1555	1561	rVB2	7746	9568	0.35%	0.034%
39	12.455	1590	1594	1595	rVB2	6143	4822	0.18%	0.017%
40	12.490	1599	1600	1605	rVB	3172	4482	0.16%	0.016%
41	12.555	1609	1611	1614	rBV2	4127	4300	0.16%	0.015%
42	12.678	1629	1632	1635	rBV	4029	4416	0.16%	0.016%
43	12.737	1639	1642	1646	rVB3	4229	6631	0.24%	0.024%
44	13.077	1698	1700	1702	rVB3	5467	4583	0.17%	0.017%
45	13.295	1733	1737	1744	rBV5	6395	11041	0.41%	0.040%
46	13.782	1816	1820	1821	rBV	5180	5932	0.22%	0.021%
47	13.876	1830	1836	1844	rBV	817108	1153001	42.31%	4.152%
48	14.164	1877	1885	1894	rBV	843877	1353400	49.67%	4.874%
49	14.300	1905	1908	1910	rBV3	3702	4759	0.17%	0.017%
50	14.382	1919	1922	1924	rBV3	3830	4268	0.16%	0.015%
51	14.429	1927	1930	1931	rBV2	3970	4365	0.16%	0.016%
52	14.470	1931	1937	1945	rVB2	893048	1347211	49.44%	4.852%
53	14.593	1956	1958	1961	rBV4	6623	7823	0.29%	0.028%
54	14.687	1969	1974	1988	rBV	199335	432572	15.87%	1.558%
55	14.899	2006	2010	2016	rVB6	9142	13047	0.48%	0.047%
56	15.122	2042	2048	2049	rBV3	5432	7662	0.28%	0.028%
57	15.269	2071	2073	2081	rBV5	6928	12754	0.47%	0.046%
58	15.328	2081	2083	2086	rVB3	5175	4707	0.17%	0.017%
59	15.469	2100	2107	2114	rBV	1190620	1786428	65.56%	6.433%
60	15.598	2121	2129	2143	rBV	284934	486104	17.84%	1.751%
61	15.710	2145	2148	2151	rVB4	9520	13275	0.49%	0.048%
62	15.833	2164	2169	2176	rVB	306392	442295	16.23%	1.593%
63	15.880	2176	2177	2180	rBV3	4701	4938	0.18%	0.018%
64	16.150	2220	2223	2224	rBV3	6665	6257	0.23%	0.023%
65	16.855	2341	2343	2348	rVB2	6223	8171	0.30%	0.029%
66	16.902	2348	2351	2352	rBV	6171	6605	0.24%	0.024%
67	16.979	2361	2364	2365	rBV3	6357	5673	0.21%	0.020%
68	17.085	2379	2382	2384	rBV3	3949	5425	0.20%	0.020%
69	17.137	2388	2391	2392	rBV2	6424	4938	0.18%	0.018%
70	17.226	2399	2406	2414	rBV	1218429	1808260	66.36%	6.512%
71	17.325	2417	2423	2431	rVV	1437059	2109493	77.42%	7.597%
72	17.425	2438	2440	2444	rVB4	11563	13611	0.50%	0.049%
73	17.613	2467	2472	2476	rBV5	9343	16385	0.60%	0.059%
74	17.895	2518	2520	2523	rVB4	6968	7417	0.27%	0.027%
75	18.048	2544	2546	2549	rVB3	5704	4979	0.18%	0.018%
76	18.130	2556	2560	2567	rBV4	61892	121352	4.45%	0.437%

Data Path : Z:\svoasrv\HPCHEM1\BNA_G\Data\BG112224\
 Data File : BG063523.D
 Acq On : 22 Nov 2024 17:07
 Operator : RC/JU
 Sample : P4943-04
 Misc :
 ALS Vial : 13 Sample Multiplier: 1

Instrument :
 BNA_G
 ClientSampleId :
 C0TD7

Integration Parameters: LSCINT.P

Integrator: RTE
 Smoothing : OFF Filtering: 5
 Sampling : 1 Min Area: 0.1 % of largest Peak
 Start Thrs: 0.2 Max Peaks: 100
 Stop Thrs : 0 Peak Location: TOP

If leading or trailing edge < 100 prefer < Baseline drop else tangent >
 Peak separation: 5

Method : Z:\svoasrv\HPCHEM1\BNA_G\Methods\SFAM-EPA-BG112024.MA.M
 Title : SVOA CALIBRATION

77	18.430	2605	2611	2613	rBV7	14420	18916	0.69%	0.068%
78	18.506	2623	2624	2628	rBV4	6904	7935	0.29%	0.029%
79	18.547	2629	2631	2636	rVV4	9804	14030	0.51%	0.051%
80	18.659	2648	2650	2652	rBV3	6811	5926	0.22%	0.021%
81	18.689	2652	2655	2657	rVV3	4924	5426	0.20%	0.020%
82	18.741	2663	2664	2666	rBV2	5648	4992	0.18%	0.018%
83	18.971	2700	2703	2709	rVB5	17142	31537	1.16%	0.114%
84	19.188	2736	2740	2744	rBV5	19004	29205	1.07%	0.105%
85	19.264	2748	2753	2759	rBV2	21981	37717	1.38%	0.136%
86	19.417	2774	2779	2780	rBV3	10764	18507	0.68%	0.067%
87	19.546	2799	2801	2803	rBV3	6181	6502	0.24%	0.023%
88	19.623	2806	2814	2820	rBV	1913647	2724871	100.00%	9.813%
89	19.928	2863	2866	2867	rBV3	6145	7368	0.27%	0.027%
90	20.069	2888	2890	2893	rBV4	6575	7068	0.26%	0.025%
91	20.140	2900	2902	2903	rBV	10216	8505	0.31%	0.031%
92	20.169	2905	2907	2912	rVB5	20708	21670	0.80%	0.078%
93	20.404	2946	2947	2950	rBV3	10715	6321	0.23%	0.023%
94	20.669	2988	2992	2997	rBV4	31205	35999	1.32%	0.130%
95	21.150	3069	3074	3079	rBV	217360	325876	11.96%	1.174%
96	21.485	3125	3131	3138	rBV2	1367731	2119758	77.79%	7.634%
97	21.673	3160	3163	3170	rVB4	51908	65798	2.41%	0.237%
98	22.249	3258	3261	3268	rVB4	44001	66248	2.43%	0.239%
99	24.317	3603	3613	3622	rBV	1037493	2635315	96.71%	9.491%
100	24.529	3640	3649	3662	rVB	885326	2317853	85.06%	8.347%

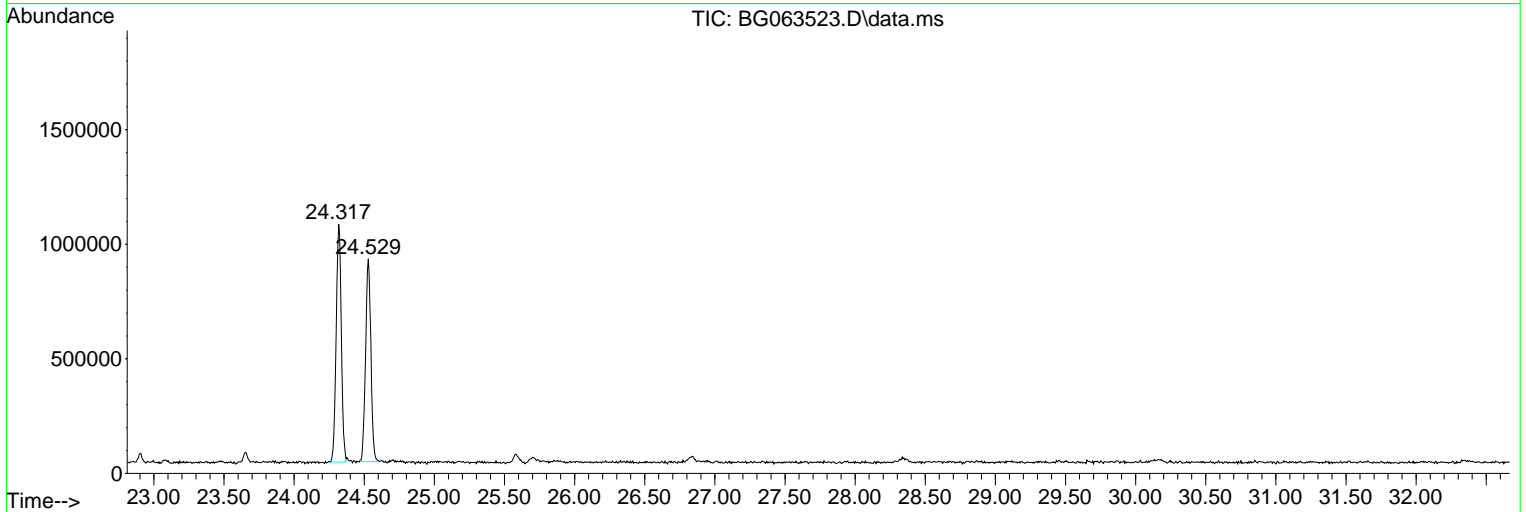
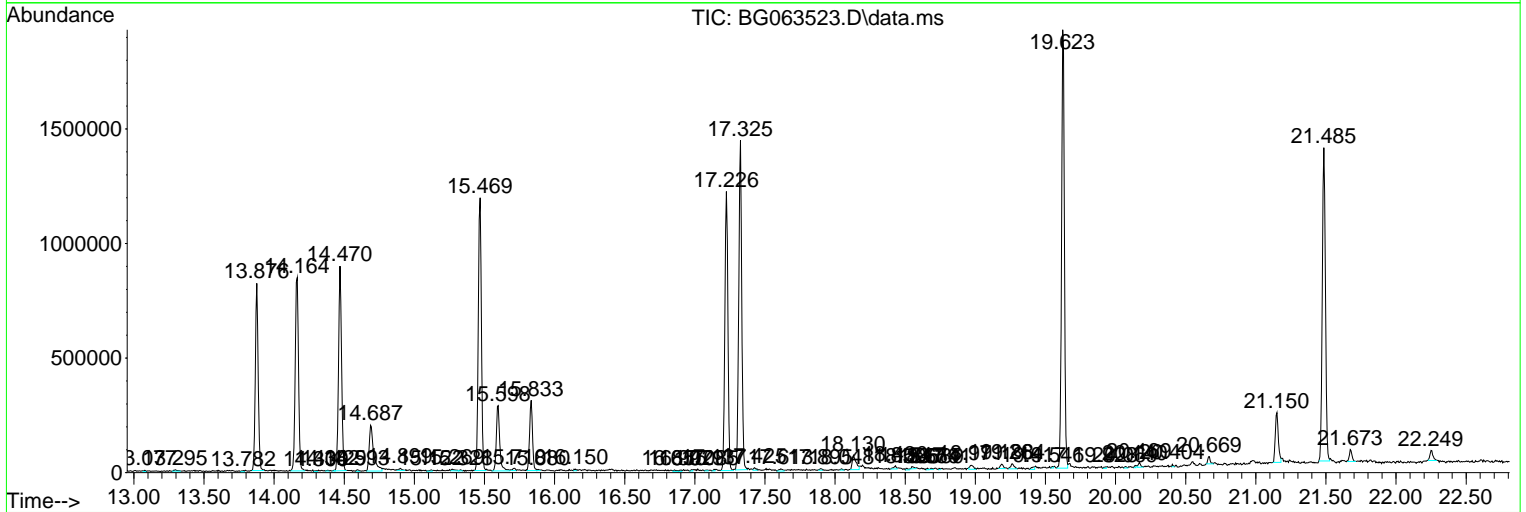
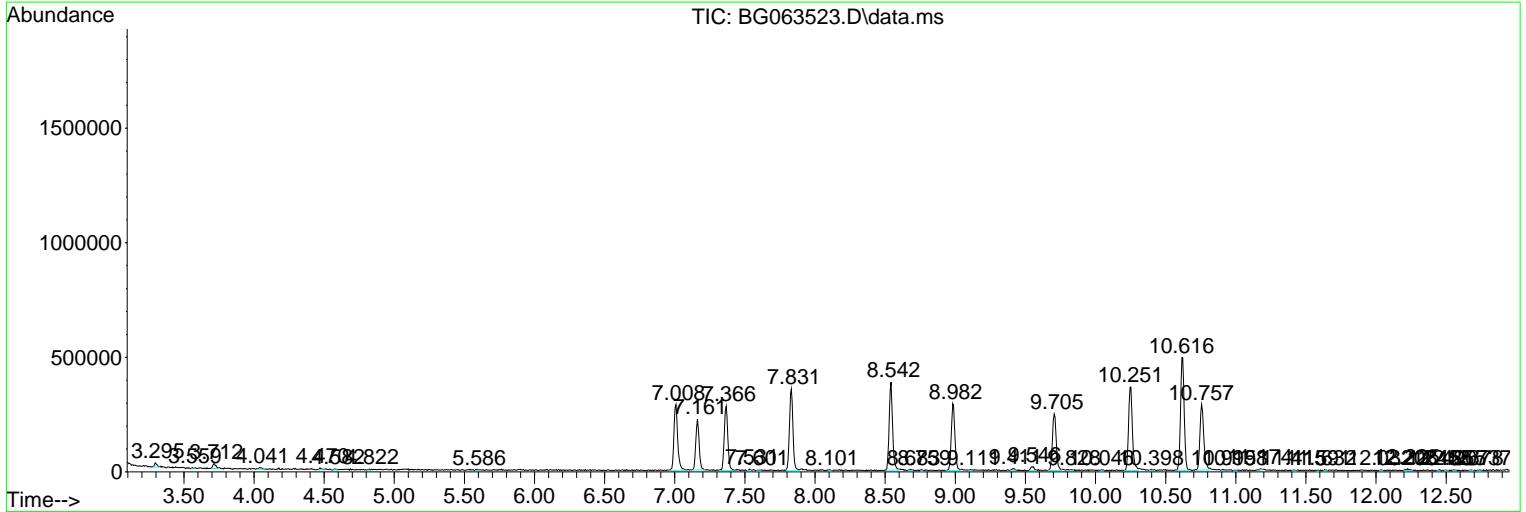
Sum of corrected areas: 27767673

Data Path : Z:\svoasrv\HPCHEM1\BNA_G\Data\BG112224\
 Data File : BG063523.D
 Acq On : 22 Nov 2024 17:07
 Operator : RC/JU
 Sample : P4943-04
 Misc :
 ALS Vial : 13 Sample Multiplier: 1

Instrument :
 BNA_G
ClientSampleId :
 C0TD7

Quant Method : Z:\svoasrv\HPCHEM1\BNA_G\Methods\SFAM-EPA-BG112024.MA.M
 Quant Title : SVOA CALIBRATION

TIC Library : C:\DATABASE\NIST20.L
 TIC Integration Parameters: LSCINT.P



Data Path : Z:\svoasrv\HPCHEM1\BNA_G\Data\BG112224\
 Data File : BG063523.D
 Acq On : 22 Nov 2024 17:07
 Operator : RC/JU
 Sample : P4943-04
 Misc :
 ALS Vial : 13 Sample Multiplier: 1

Instrument :
 BNA_G
 ClientSampleId :
 C0TD7

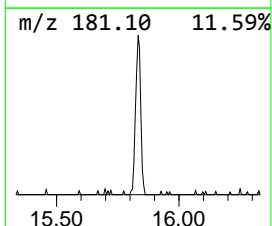
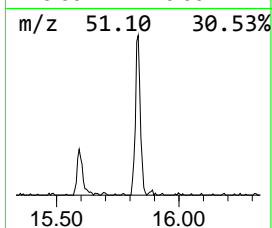
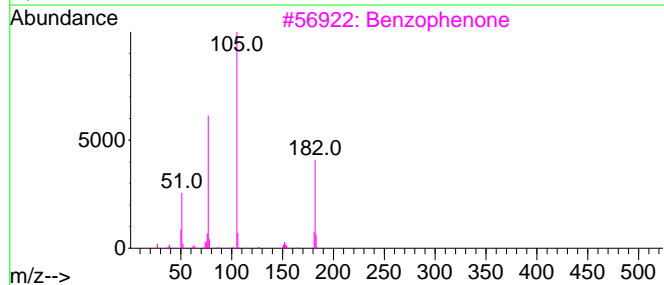
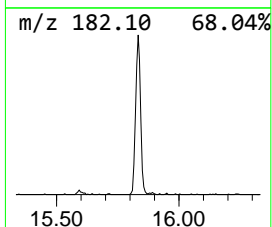
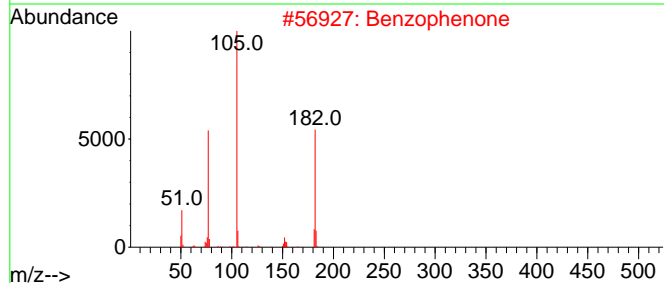
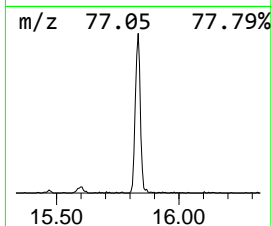
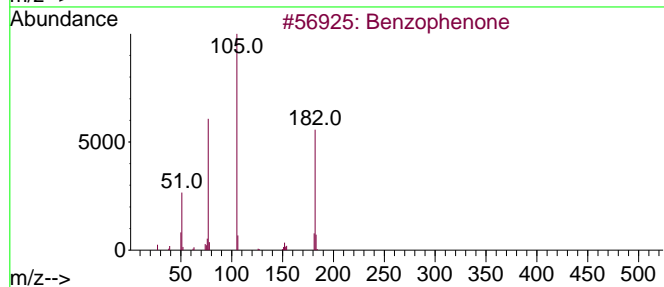
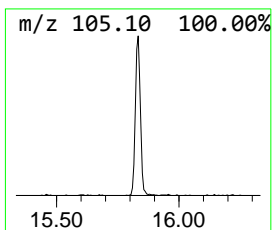
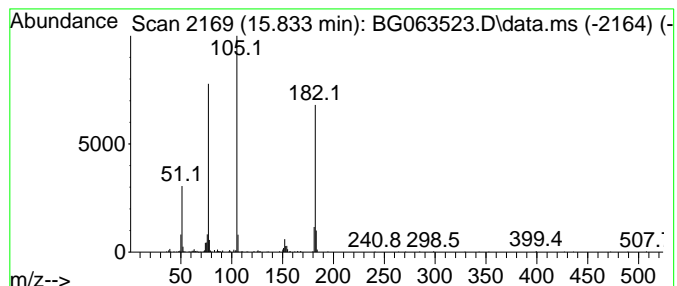
Quant Method : Z:\svoasrv\HPCHEM1\BNA_G\Methods\SFAM-EPA-BG112024.MA.M
 Quant Title : SVOA CALIBRATION

TIC Library : C:\DATABASE\NIST20.L
 TIC Integration Parameters: LSCINT.P

 Peak Number 1 Benzophenone Concentration Rank 1

R.T.	EstConc	Area	Relative to ISTD	R.T.
15.833	6.57 ng/ul	442295	Acenaphthene-d10	14.470

Hit#	of	5	Tentative ID	MW	MolForm	CAS#	Qual
1			Benzophenone	182	C13H10O	000119-61-9	96
2			Benzophenone	182	C13H10O	000119-61-9	95
3			Benzophenone	182	C13H10O	000119-61-9	91
4			Benzophenone	182	C13H10O	000119-61-9	91
5			Azobenzene	182	C12H10N2	000103-33-3	72



Data Path : Z:\svoasrv\HPCHEM1\BNA_G\Data\BG112224\
 Data File : BG063523.D
 Acq On : 22 Nov 2024 17:07
 Operator : RC/JU
 Sample : P4943-04
 Misc :
 ALS Vial : 13 Sample Multiplier: 1

Instrument :
 BNA_G
 ClientSampleId :
 C0TD7

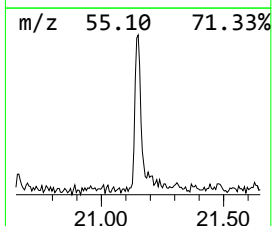
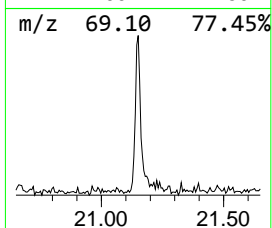
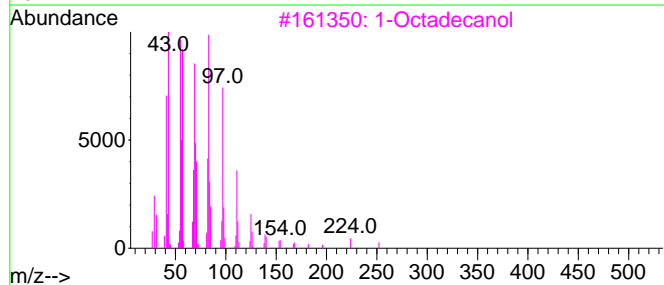
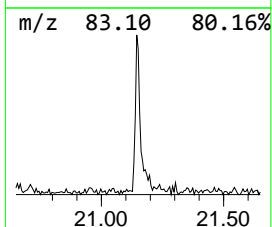
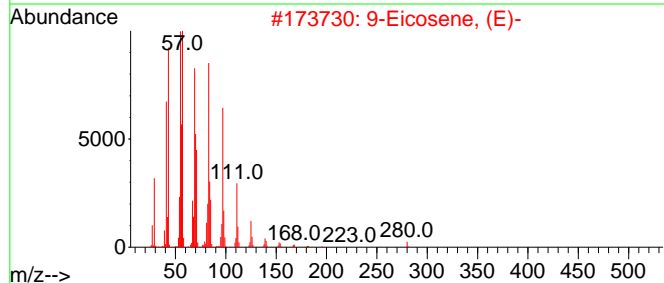
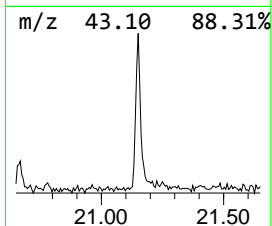
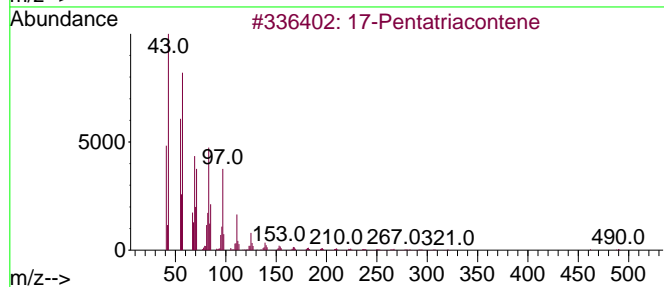
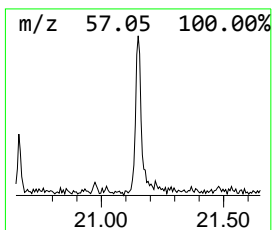
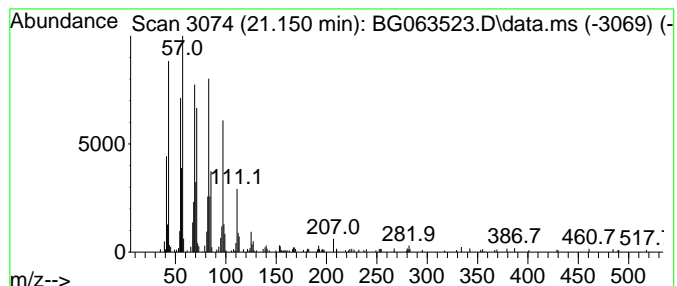
Quant Method : Z:\svoasrv\HPCHEM1\BNA_G\Methods\SFAM-EPA-BG112024.MA.M
 Quant Title : SVOA CALIBRATION

TIC Library : C:\DATABASE\NIST20.L
 TIC Integration Parameters: LSCINT.P

 Peak Number 2 (DEL) Alkane: Straight-Chai... Concentration Rank 2

R.T.	EstConc	Area	Relative to ISTD	R.T.
21.150	3.07 ng/ul	325876	Chrysene-d12	21.485

Hit#	of 5	Tentative ID	MW	MolForm	CAS#	Qual
1		17-Pentatriacontene	491	C35H70	006971-40-0	94
2		9-Eicosene, (E)-	280	C20H40	074685-29-3	91
3		1-Octadecanol	270	C18H38O	000112-92-5	90
4		Cyclopropane, 1-(1,2-dimethylpro...)	252	C18H36	041977-42-8	89
5		3-Octadecene, (E)-	252	C18H36	007206-19-1	89



Data Path : Z:\svoasrv\HPCHEM1\BNA_G\Data\BG112224\
Data File : BG063523.D
Acq On : 22 Nov 2024 17:07
Operator : RC/JU
Sample : P4943-04
Misc :
ALS Vial : 13 Sample Multiplier: 1

Instrument :
BNA_G
ClientSampleId :
C0TD7

Quant Method : Z:\svoasrv\HPCHEM1\BNA_G\Methods\SFAM-EPA-BG112024.MA.M
Quant Title : SVOA CALIBRATION

TIC Library : C:\DATABASE\NIST20.L
TIC Integration Parameters: LSCINT.P

TIC Top Hit name	RT	EstConc	Units	Response	--Internal Standard--			
					#	RT	Resp	Conc
Benzophenone	15.833	6.6	ng/u1	442295	3	14.470	1347210	20.0
(DEL) Alkane: S...	21.150	3.1	ng/u1	325876	5	21.485	2119760	20.0