

Data Path : Z:\SVOASRV\HPCHEM1\BNA G\DATA\BG112818\
 Data File : BG038224.D
 Acq On : 29 Nov 2018 7:53
 Operator : JU/SJ
 Sample : J6069-12
 Misc :
 ALS Vial : 21 Sample Multiplier: 1

Instrument :
 BNA_G
 ClientSampleId :
 112318-CHDE-E-D-M

Quant Time: Nov 29 10:43:01 2018
 Quant Method : Z:\SVOASRV\HPCHEM1\BNA G\METHODS\8270-BG111318.M
 Quant Title : ASP BNA STANDARDS FOR 5 POINT CALIBRATION
 QLast Update : Tue Nov 13 16:39:28 2018
 Response via : Initial Calibration

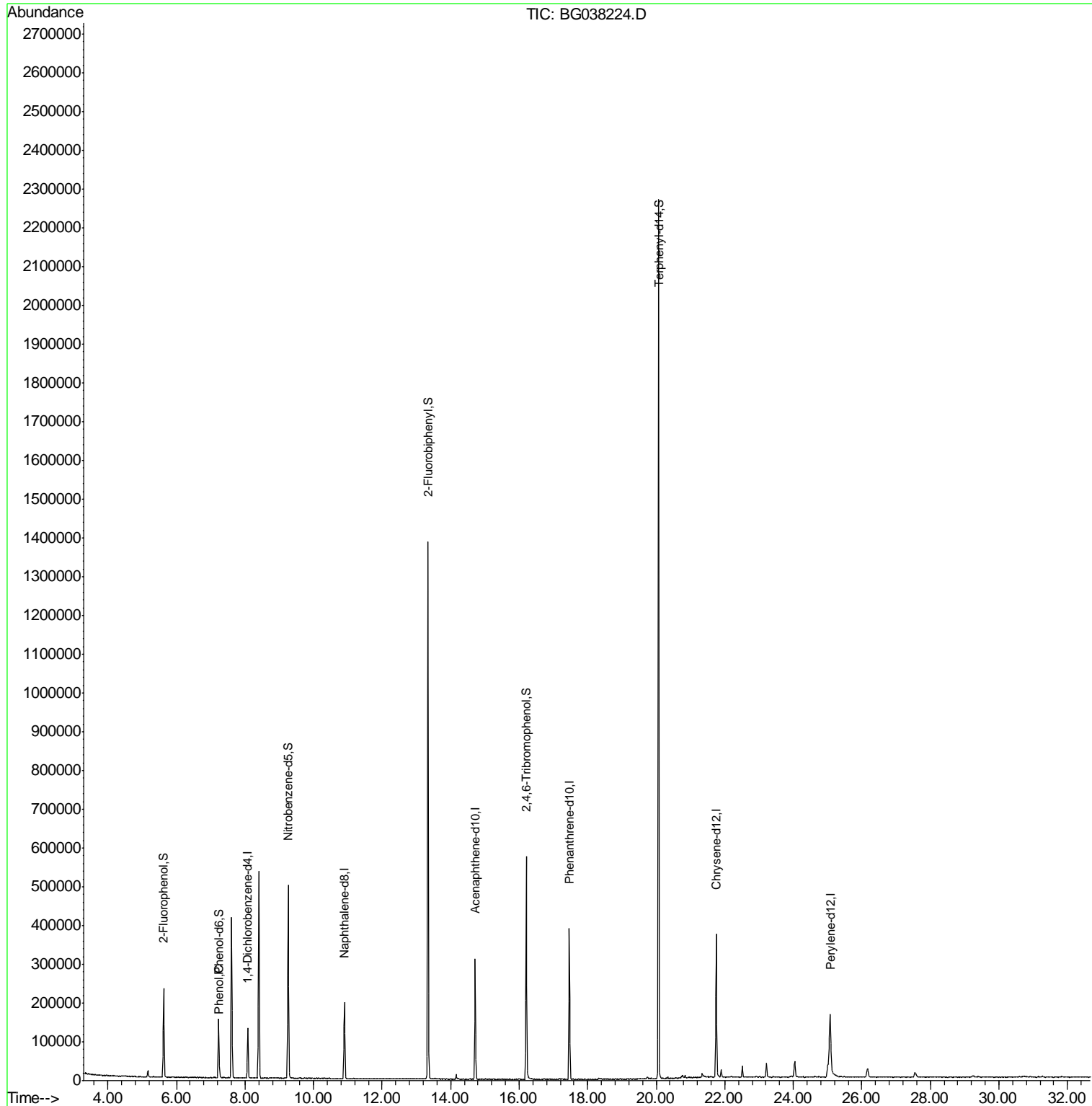
Internal Standards	R.T.	QIon	Response	Conc	Units	Dev(Min)
1) 1,4-Dichlorobenzene-d4	8.08	152	37166	20.00	ng	0.00
21) Naphthalene-d8	10.90	136	175005	20.00	ng	0.00
39) Acenaphthene-d10	14.72	164	111585	20.00	ng	0.00
64) Phenanthrene-d10	17.47	188	248480	20.00	ng	0.00
76) Chrysene-d12	21.75	240	241554	20.00	ng	0.00
87) Perylene-d12	25.07	264	227035	20.00	ng	0.00
System Monitoring Compounds						
5) 2-Fluorophenol	5.63	112	103123	47.91	ng	0.00
7) Phenol-d6	7.23	99	92776	30.19	ng	0.00
23) Nitrobenzene-d5	9.26	82	315306	96.45	ng	0.00
42) 2,4,6-Tribromophenol	16.21	330	113988	89.57	ng	0.00
45) 2-Fluorobiphenyl	13.34	172	731735	95.54	ng	0.00
79) Terphenyl-d14	20.07	244	1045066	101.80	ng	0.00
Target Compounds						Qvalue
10) Phenol	7.25	94	8633	2.652	ng	89

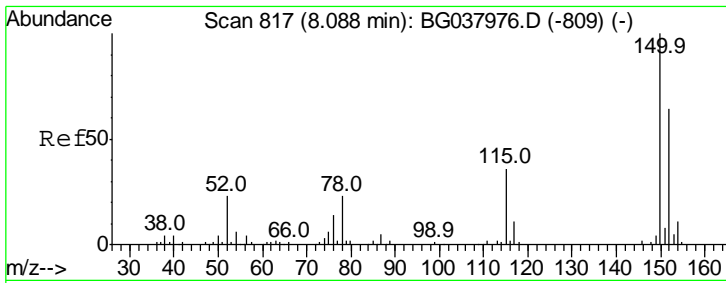
(#) = qualifier out of range (m) = manual integration (+) = signals summed

Data Path : Z:\SVOASRV\HPCHEM1\BNA G\DATA\BG112818\
 Data File : BG038224.D
 Acq On : 29 Nov 2018 7:53
 Operator : JU/SJ
 Sample : J6069-12
 Misc :
 ALS Vial : 21 Sample Multiplier: 1

Instrument :
 BNA_G
 ClientSampleId :
 112318-CHDE-E-D-M

Quant Time: Nov 29 10:43:01 2018
 Quant Method : Z:\SVOASRV\HPCHEM1\BNA G\METHODS\8270-BG111318.M
 Quant Title : ASP BNA STANDARDS FOR 5 POINT CALIBRATION
 QLast Update : Tue Nov 13 16:39:28 2018
 Response via : Initial Calibration

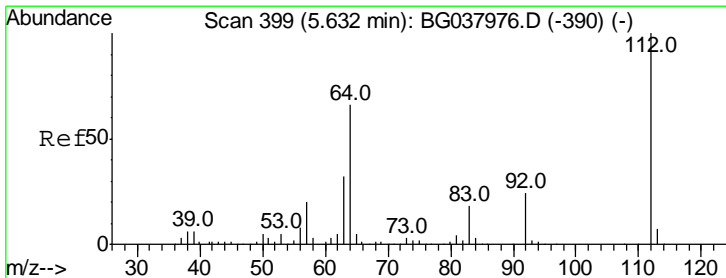
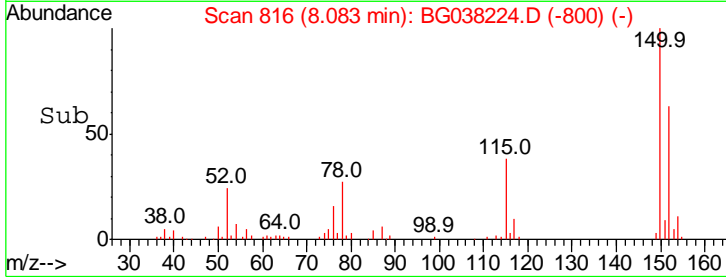
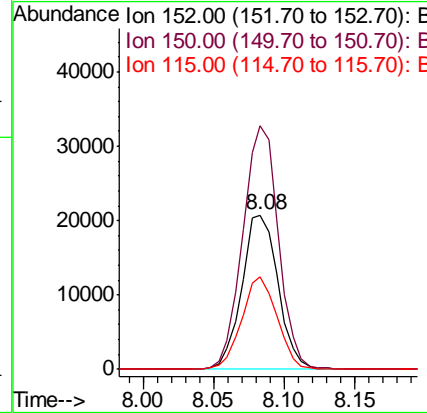
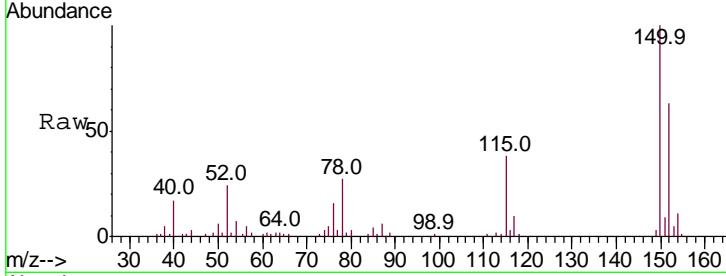




#1
 1,4-Dichlorobenzene-d4
 Concen: 20.000 ng
 RT: 8.08 min Scan# 816
 Delta R.T. -0.01 min
 Lab File: BG038224.D
 Acq: 29 Nov 2018 7:53

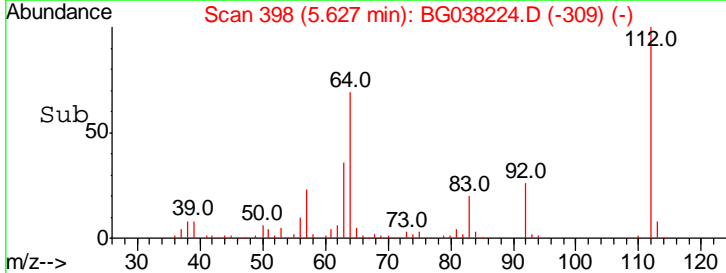
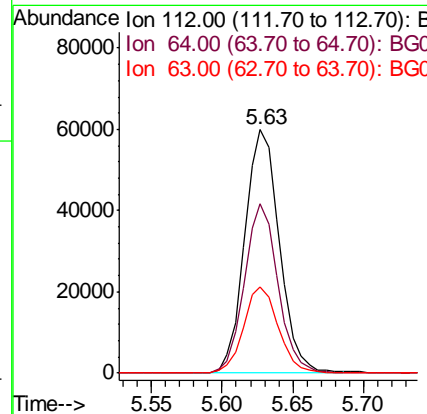
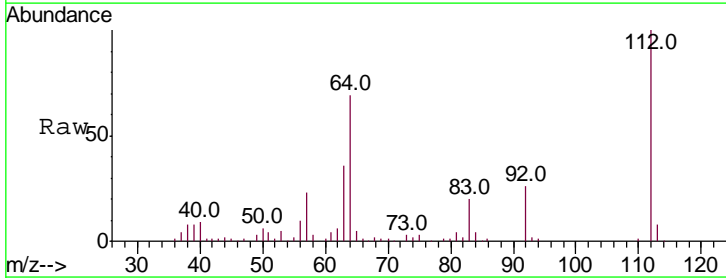
Instrument :
 BNA_G
 ClientSampleId :
 112318-CHDE-E-D-M

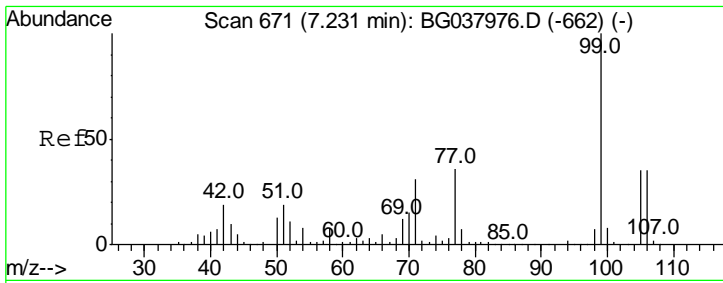
Tgt Ion	Resp	Lower	Upper
152	37166		
152	100		
150	157.6	126.0	189.0
115	60.0	45.5	68.3



#5
 2-Fluorophenol
 Concen: 47.906 ng
 RT: 5.63 min Scan# 398
 Delta R.T. -0.01 min
 Lab File: BG038224.D
 Acq: 29 Nov 2018 7:53

Tgt Ion	Resp	Lower	Upper
112	103123		
112	100		
64	69.4	53.1	79.7
63	35.6	27.3	40.9

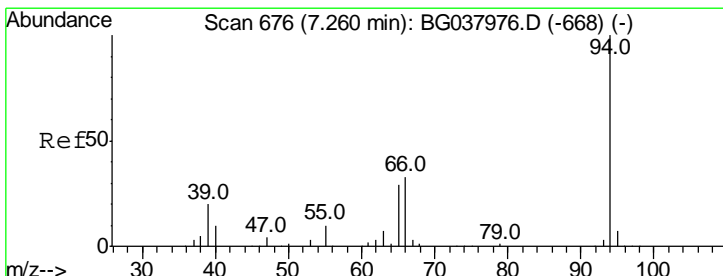
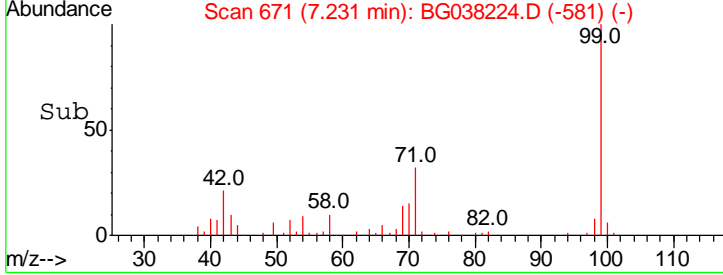
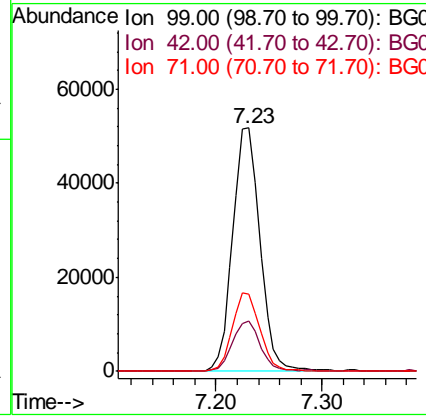
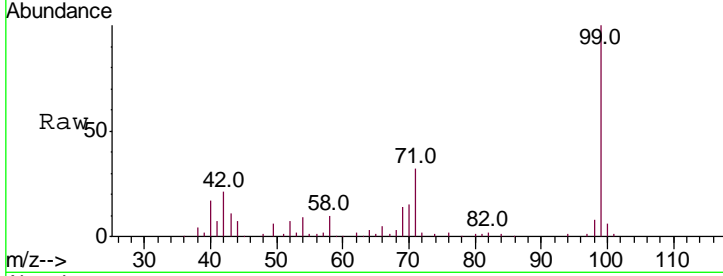




#7
 Phenol-d6
 Concen: 30.194 ng
 RT: 7.23 min Scan# 671
 Delta R.T. 0.00 min
 Lab File: BG038224.D
 Acq: 29 Nov 2018 7:53

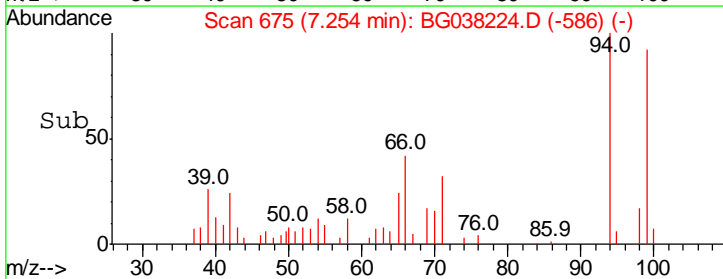
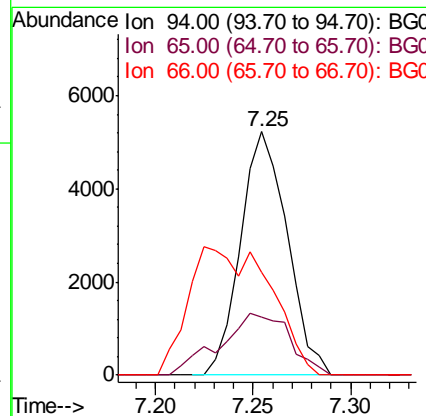
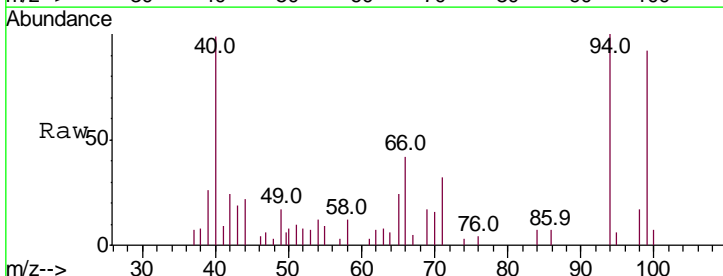
Instrument :
 BNA_G
ClientSampleId :
 112318-CHDE-E-D-M

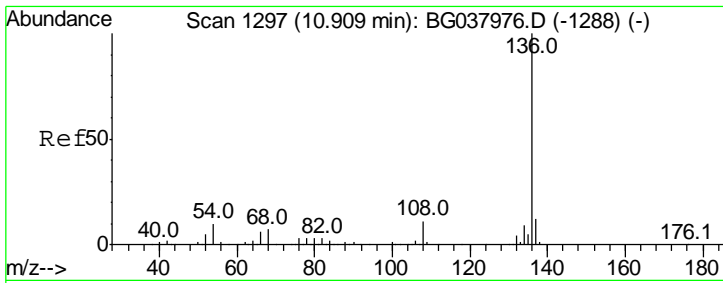
Tgt Ion	Resp	Lower	Upper
99	100		
42	20.5	15.0	22.4
71	31.8	25.5	38.3



#10
 Phenol
 Concen: 2.652 ng
 RT: 7.25 min Scan# 675
 Delta R.T. -0.01 min
 Lab File: BG038224.D
 Acq: 29 Nov 2018 7:53

Tgt Ion	Resp	Lower	Upper
94	100		
65	23.8	9.7	49.7
66	42.3	15.9	55.9

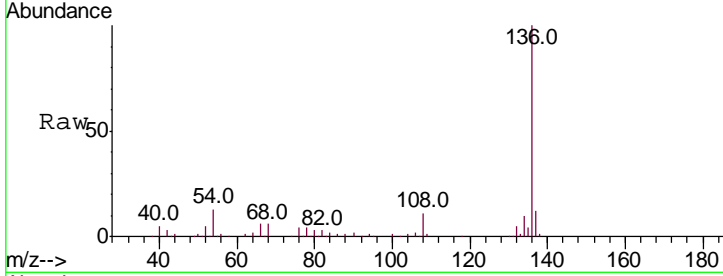




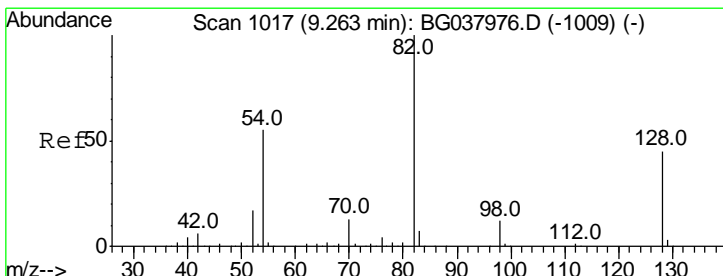
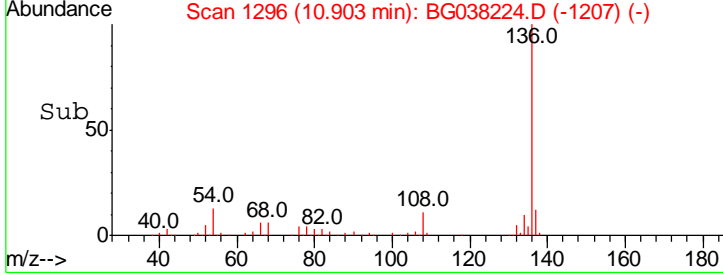
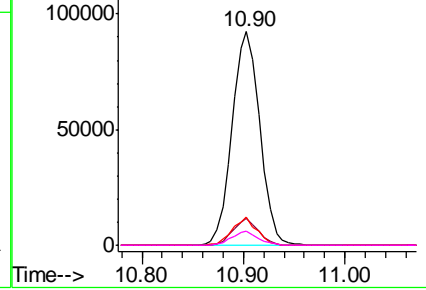
#21
 Naphthalene-d8
 Concen: 20.000 ng
 RT: 10.90 min Scan# 1296
 Delta R.T. -0.01 min
 Lab File: BG038224.D
 Acq: 29 Nov 2018 7:53

Instrument :
 BNA_G
 ClientSampled :
 112318-CHDE-E-D-M

Tgt Ion	Resp	Lower	Upper
136	175005		
137	12.4	9.6	14.4
54	12.9	7.9	11.9#
68	6.5	4.8	7.2

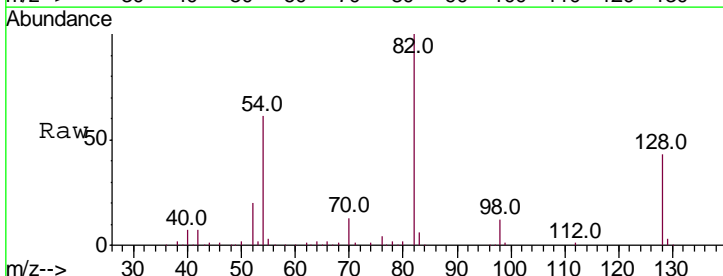


Abundance Ion 136.00 (135.70 to 136.70): E
 Ion 137.00 (136.70 to 137.70): E
 Ion 54.00 (53.70 to 54.70): BGC
 Ion 68.00 (67.70 to 68.70): BGC

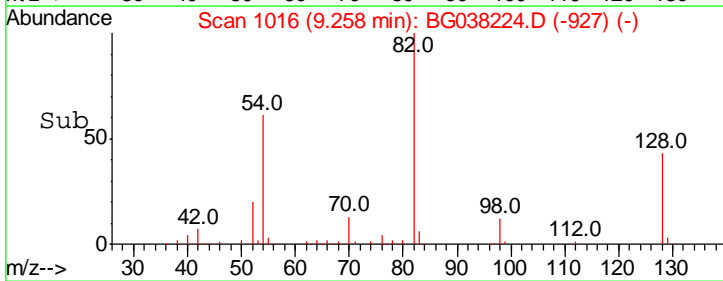
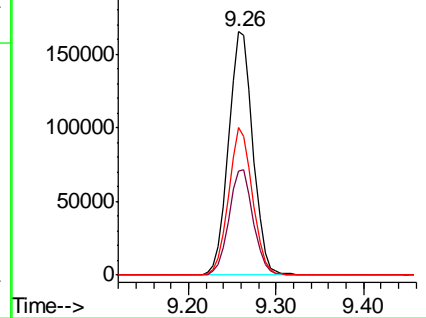


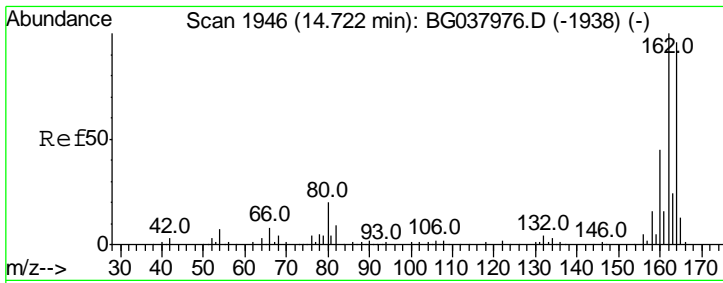
#23
 Nitrobenzene-d5
 Concen: 96.445 ng
 RT: 9.26 min Scan# 1016
 Delta R.T. -0.01 min
 Lab File: BG038224.D
 Acq: 29 Nov 2018 7:53

Tgt Ion	Resp	Lower	Upper
82	315306		
128	42.7	34.6	51.8
54	60.6	45.3	67.9



Abundance Ion 82.00 (81.70 to 82.70): BGC
 Ion 128.00 (127.70 to 128.70): E
 Ion 54.00 (53.70 to 54.70): BGC

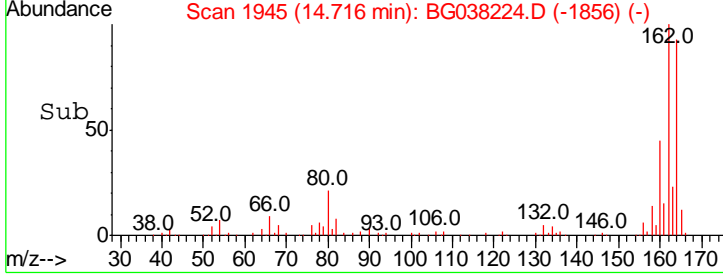
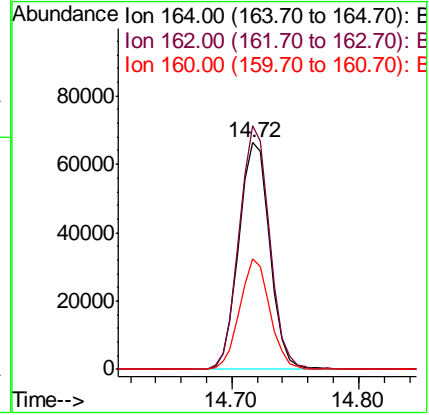
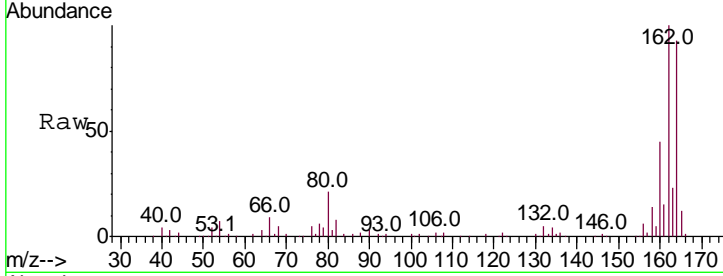




#39
 Acenaphthene-d10
 Concen: 20.000 ng
 RT: 14.72 min Scan# 1945
 Delta R.T. -0.01 min
 Lab File: BG038224.D
 Acq: 29 Nov 2018 7:53

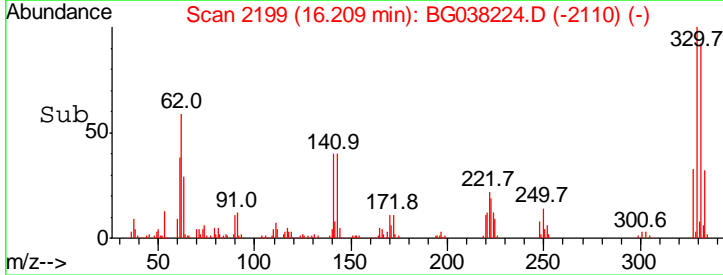
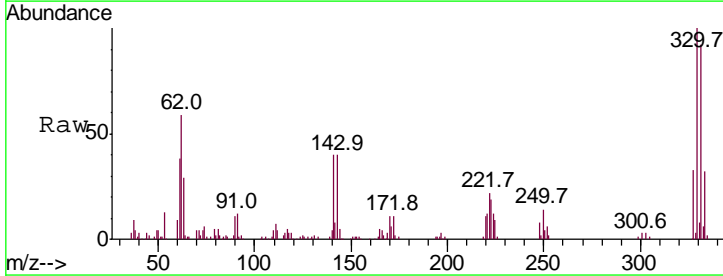
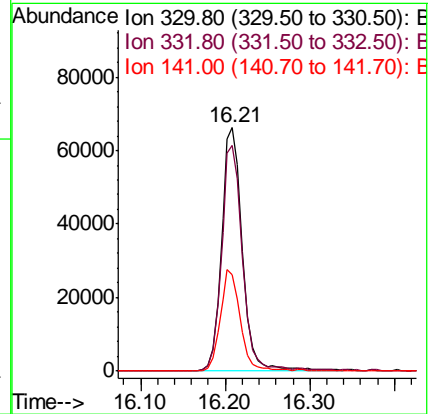
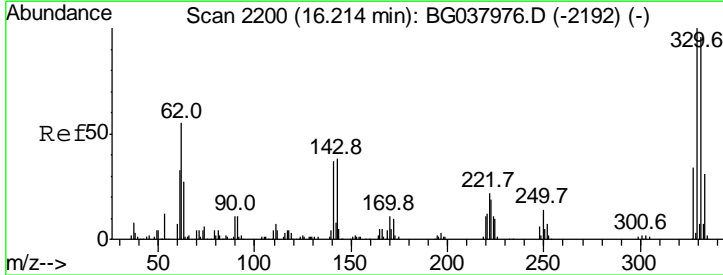
Instrument :
 BNA_G
ClientSampleId :
 112318-CHDE-E-D-M

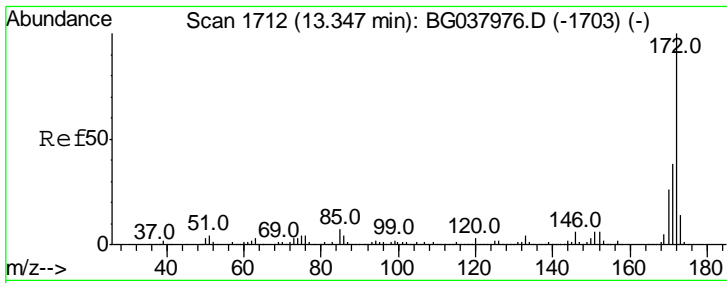
Tgt Ion	Resp	Lower	Upper
164	100		
162	107.5	81.3	121.9
160	48.8	36.3	54.5



#42
 2,4,6-Tribromophenol
 Concen: 89.571 ng
 RT: 16.21 min Scan# 2199
 Delta R.T. -0.01 min
 Lab File: BG038224.D
 Acq: 29 Nov 2018 7:53

Tgt Ion	Resp	Lower	Upper
330	100		
332	93.2	78.4	117.6
141	40.3	32.2	48.2

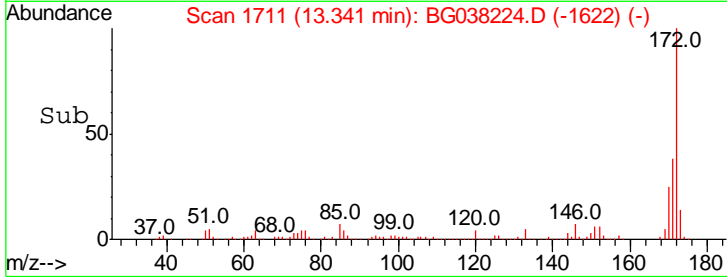
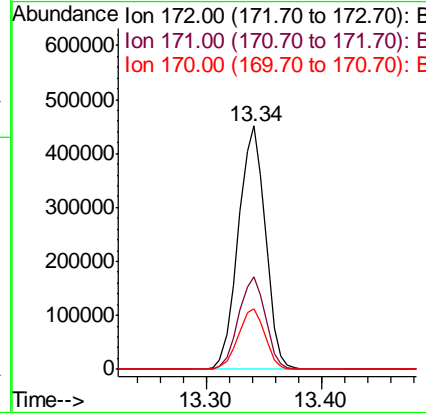
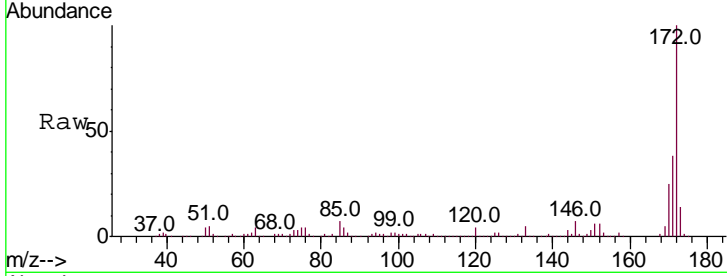




#45
 2-Fluorobiphenyl
 Concen: 95.535 ng
 RT: 13.34 min Scan# 1711
 Delta R.T. -0.01 min
 Lab File: BG038224.D
 Acq: 29 Nov 2018 7:53

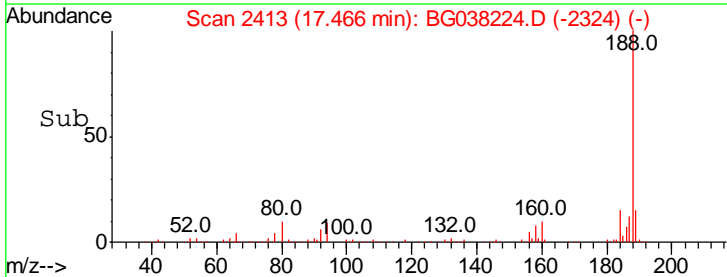
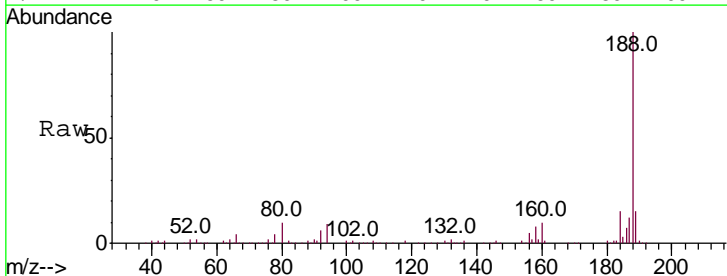
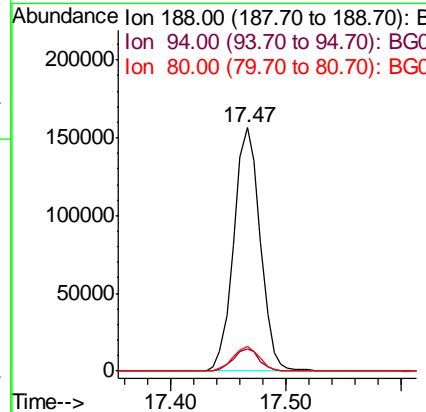
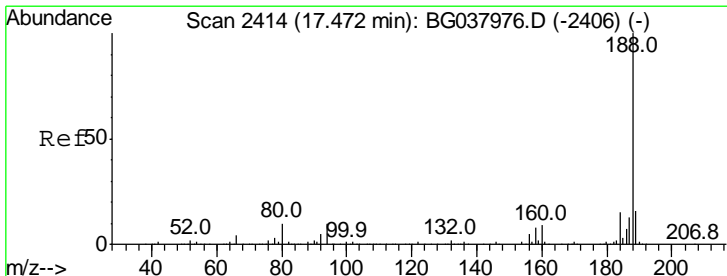
Instrument :
 BNA_G
 ClientSampleId :
 112318-CHDE-E-D-M

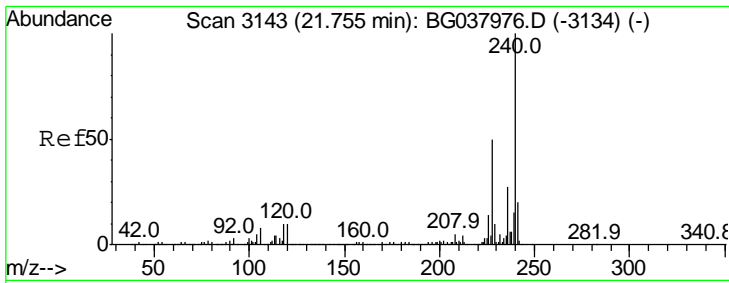
Tgt Ion	Resp	Lower	Upper
172	100		
171	38.1	31.0	46.4
170	25.0	20.2	30.2



#64
 Phenanthrene-d10
 Concen: 20.000 ng
 RT: 17.47 min Scan# 2413
 Delta R.T. -0.01 min
 Lab File: BG038224.D
 Acq: 29 Nov 2018 7:53

Tgt Ion	Resp	Lower	Upper
188	100		
94	9.2	7.2	10.8
80	10.1	7.7	11.5

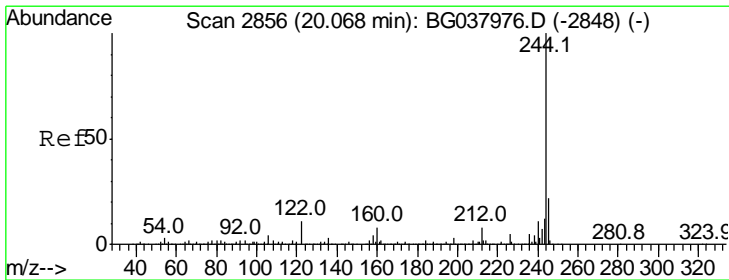
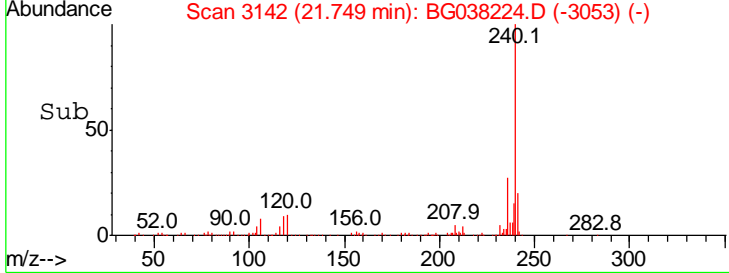
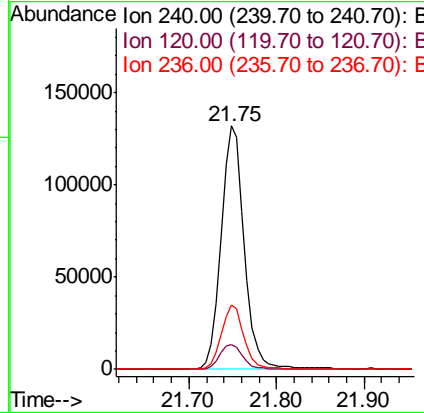
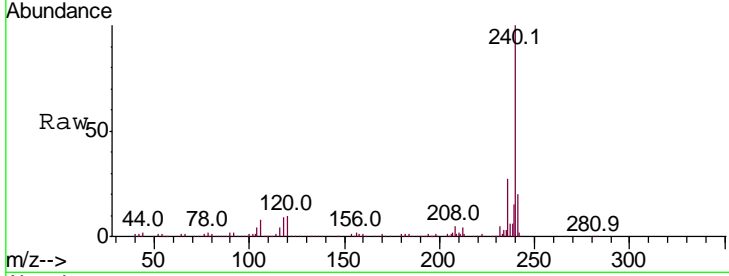




#76
 Chrysene-d12
 Concen: 20.000 ng
 RT: 21.75 min Scan# 3142
 Delta R.T. -0.01 min
 Lab File: BG038224.D
 Acq: 29 Nov 2018 7:53

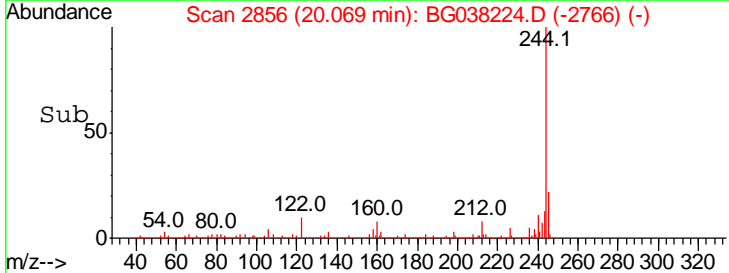
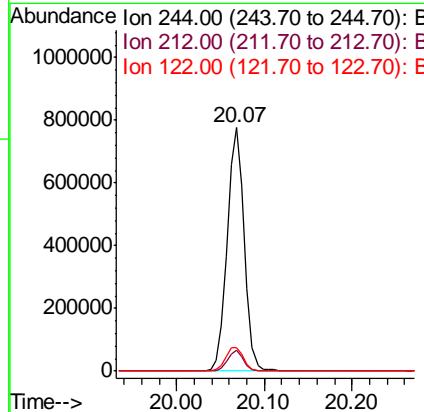
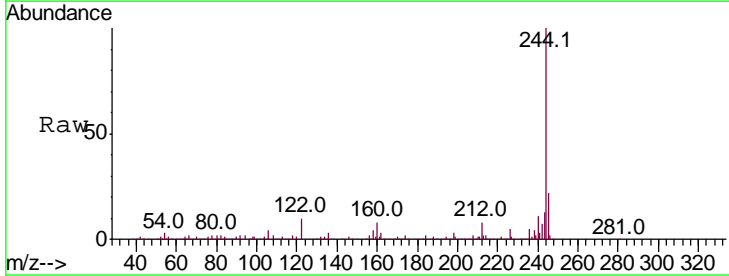
Instrument :
 BNA_G
 ClientSampleId :
 112318-CHDE-E-D-M

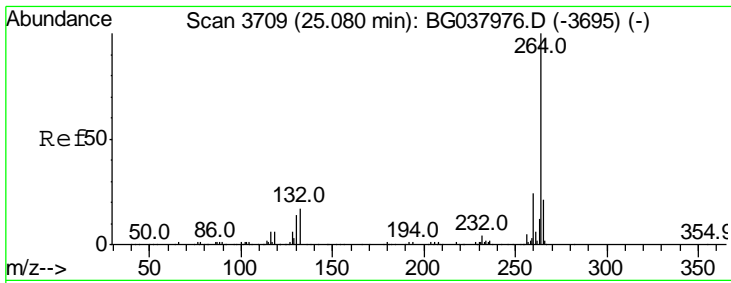
Tgt Ion	Resp	Lower	Upper
240	100		
120	10.0	8.1	12.1
236	26.7	21.4	32.0



#79
 Terphenyl-d14
 Concen: 101.801 ng
 RT: 20.07 min Scan# 2856
 Delta R.T. 0.00 min
 Lab File: BG038224.D
 Acq: 29 Nov 2018 7:53

Tgt Ion	Resp	Lower	Upper
244	100		
212	8.4	6.5	9.7
122	9.6	9.0	13.4





#87
 Perylene-d12
 Concen: 20.000 ng
 RT: 25.07 min Scan# 3708
 Delta R.T. -0.01 min
 Lab File: BG038224.D
 Acq: 29 Nov 2018 7:53

Instrument :
 BNA_G
 ClientSampleId :
 112318-CHDE-E-D-M

Ion	Ratio	Lower	Upper
264	100		
260	23.9	18.2	27.4
265	21.0	17.9	26.9

