

Data Path : Z:\HPCHEM1\BNA_G\DATA\BG120215\
 Data File : BG019849.D
 Acq On : 3 Dec 2015 00:31
 Operator : UM/NP
 Sample : G4585-14
 Misc :
 ALS Vial : 16 Sample Multiplier: 1

Instrument :
 BNA_G
 ClientSampleId :
 SB-P3WC-18(0-4)

Integration Parameters: rteint.p
 Integrator: RTE
 Smoothing : ON Filtering: 5
 Sampling : 1 Min Area: 3 % of largest Peak
 Start Thrs: 0.2 Max Peaks: 100
 Stop Thrs : 0 Peak Location: TOP

If leading or trailing edge < 100 prefer < Baseline drop else tangent >
 Peak separation: 5

Method : Z:\HPCHEM1\BNA_G\METHODS\8270-BG120215.M
 Title : ASP BNA STANDARDS FOR 5 POINT CALIBRATION

Signal : TIC

peak #	R.T. min	first scan	max scan	last scan	PK TY	peak height	corr. area	corr. % max.	% of total
1	2.878	5	7	9	rVB	2606297	1825430	66.00%	14.041%
2	3.143	46	52	63	rBV2	57353	121492	4.39%	0.934%
3	3.237	63	68	78	rVB	197565	295529	10.69%	2.273%
4	4.594	293	299	305	rBV	24930	37079	1.34%	0.285%
5	5.205	398	403	412	rVB	115398	170922	6.18%	1.315%
6	5.669	475	482	493	rBV	415062	638914	23.10%	4.914%
7	7.273	746	755	762	rBV	389986	647649	23.42%	4.981%
8	7.655	813	820	828	rBV	451339	750682	27.14%	5.774%
9	8.131	894	901	908	rVB	82799	138666	5.01%	1.067%
10	8.454	947	956	966	rBV	348102	581731	21.03%	4.474%
11	9.294	1091	1099	1107	rBV	289028	503056	18.19%	3.869%
12	10.945	1374	1380	1386	rBV	109269	193289	6.99%	1.487%
13	13.390	1788	1796	1802	rBV	794344	1240107	44.84%	9.538%
14	14.759	2022	2029	2037	rBV2	181224	293659	10.62%	2.259%
15	16.239	2275	2281	2288	rBV	807656	1192215	43.11%	9.170%
16	17.502	2490	2496	2501	rBV	303520	449985	16.27%	3.461%
17	20.111	2934	2940	2945	rBV	2107259	2765826	100.00%	21.274%
18	21.786	3218	3225	3231	rBV	379733	636669	23.02%	4.897%
19	25.082	3778	3786	3799	rVB3	181122	518206	18.74%	3.986%

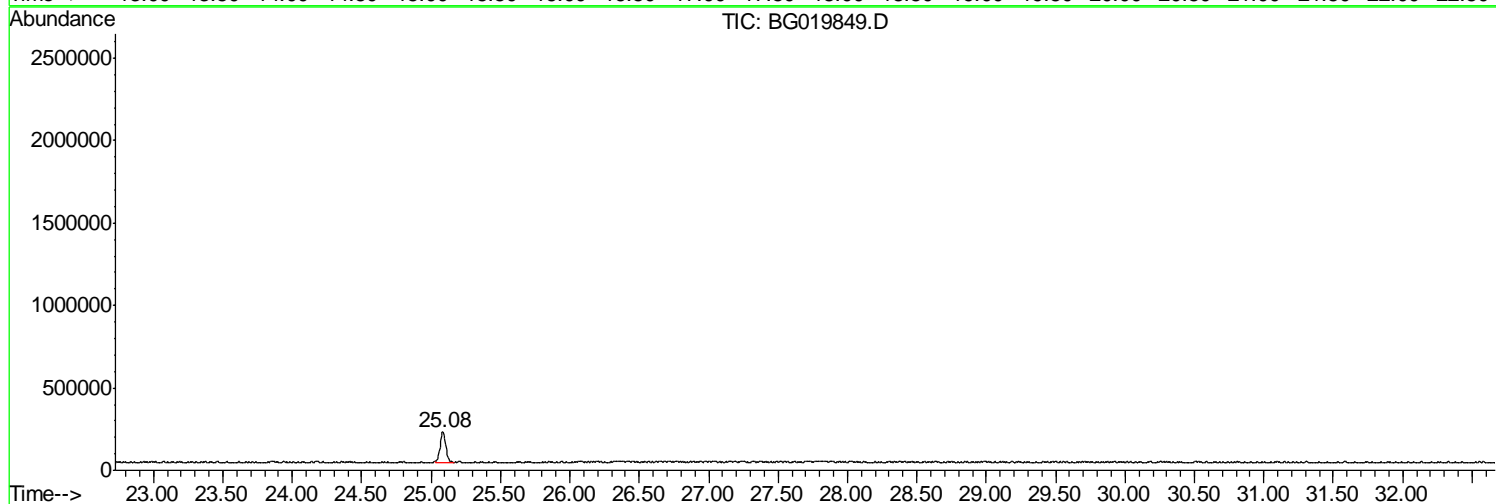
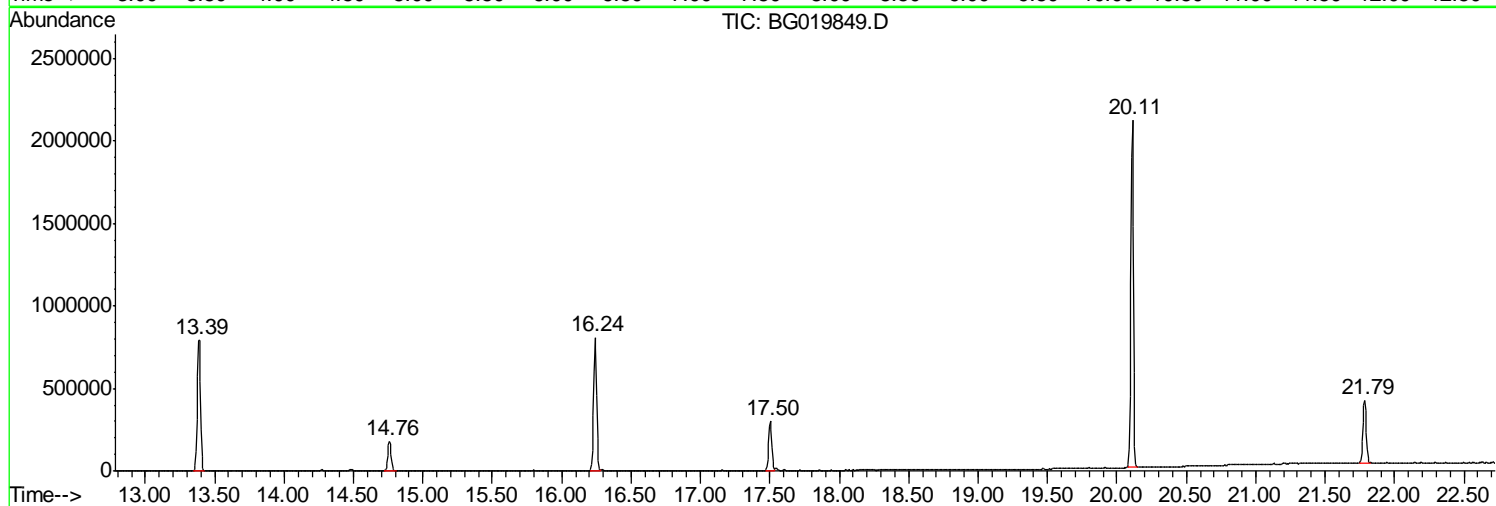
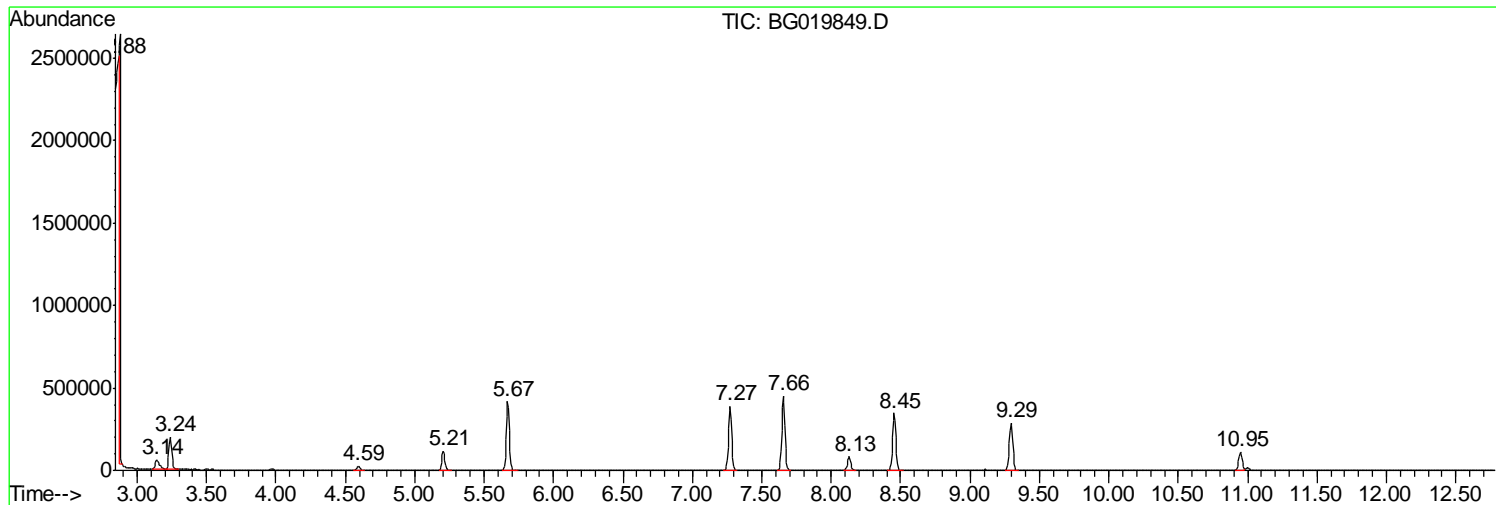
Sum of corrected areas: 13001106

Data Path : Z:\HPCHEM1\BNA_G\DATA\BG120215\
Data File : BG019849.D
Acq On : 3 Dec 2015 00:31
Operator : UM/NP
Sample : G4585-14
Misc :
ALS Vial : 16 Sample Multiplier: 1

Instrument :
BNA_G
ClientSampleId :
SB-P3WC-18(0-4)

Quant Method : Z:\HPCHEM1\BNA_G\METHODS\8270-BG120215.M
Quant Title : ASP BNA STANDARDS FOR 5 POINT CALIBRATION

TIC Library : C:\DATABASE\NIST02.L
TIC Integration Parameters: LSCINT.P



Data Path : Z:\HPCHEM1\BNA_G\DATA\BG120215\
 Data File : BG019849.D
 Acq On : 3 Dec 2015 00:31
 Operator : UM/NP
 Sample : G4585-14
 Misc :
 ALS Vial : 16 Sample Multiplier: 1

Instrument :
 BNA_G
 ClientSampleId :
 SB-P3WC-18(0-4)

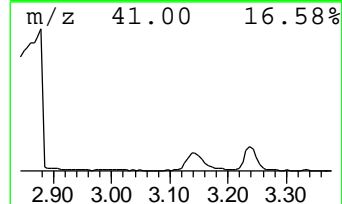
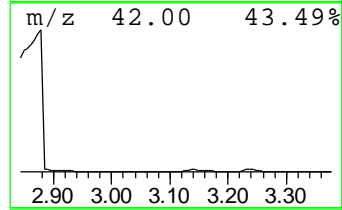
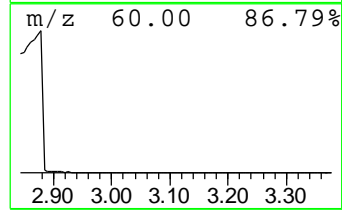
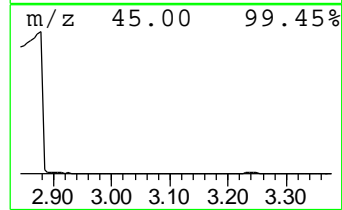
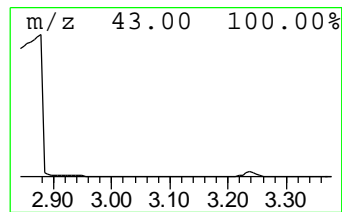
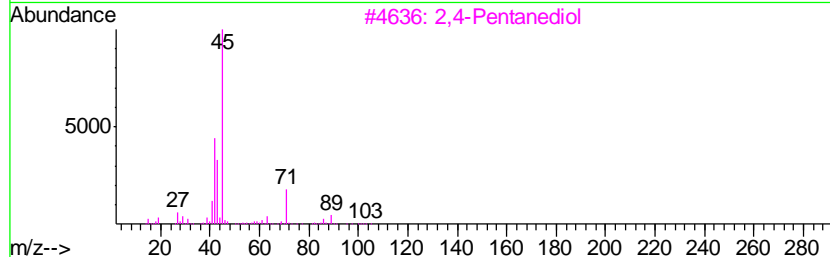
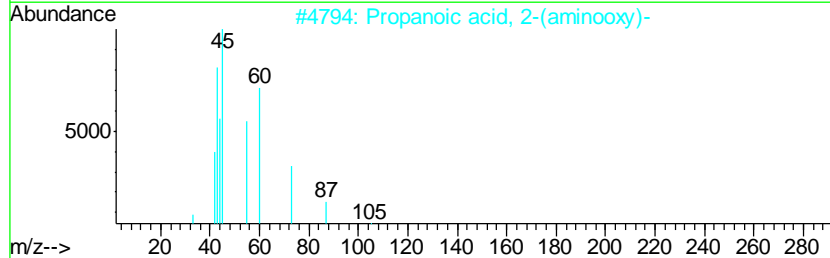
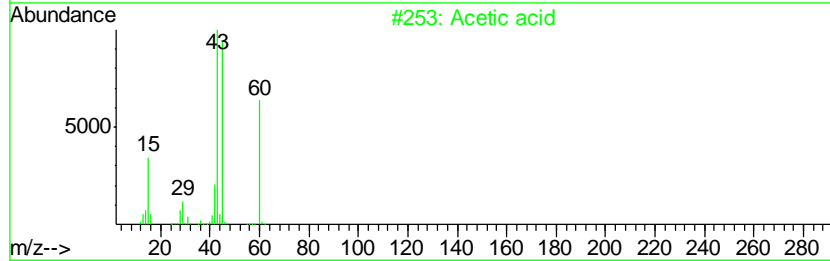
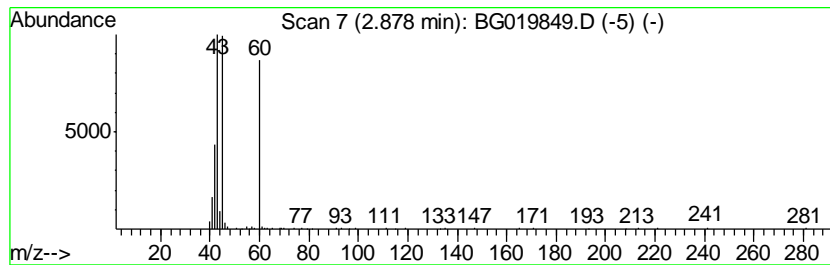
Quant Method : Z:\HPCHEM1\BNA_G\METHODS\8270-BG120215.M
 Quant Title : ASP BNA STANDARDS FOR 5 POINT CALIBRATION

TIC Library : C:\DATABASE\NIST02.L
 TIC Integration Parameters: LSCINT.P

 Peak Number 1 Acetic acid Concentration Rank 1

R.T.	EstConc	Area	Relative to ISTD	R.T.
2.88	263.28 ng	1825430	1,4-Dichlorobenzene-d4	8.13

Hit#	of	Tentative ID	MW	MolForm	CAS#	Qual
1	5	Acetic acid	60	C2H4O2	000064-19-7	72
2		Propanoic acid, 2-(aminooxy)-	105	C3H7NO3	002786-22-3	43
3		2,4-Pentanediol	104	C5H12O2	000625-69-4	32
4		Hydrazine, 1,1-dimethyl-	60	C2H8N2	000057-14-7	25
5		Hydrazine, 1,2-dimethyl-	60	C2H8N2	000540-73-8	9



Data Path : Z:\HPCHEM1\BNA_G\DATA\BG120215\
 Data File : BG019849.D
 Acq On : 3 Dec 2015 00:31
 Operator : UM/NP
 Sample : G4585-14
 Misc :
 ALS Vial : 16 Sample Multiplier: 1

Instrument :
 BNA_G
 ClientSampleID :
 SB-P3WC-18(0-4)

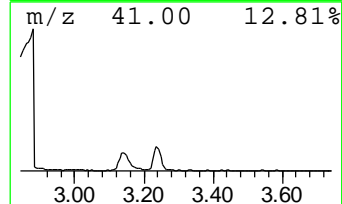
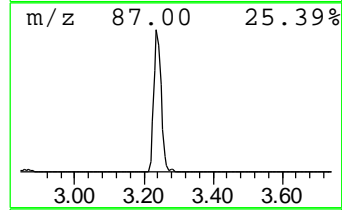
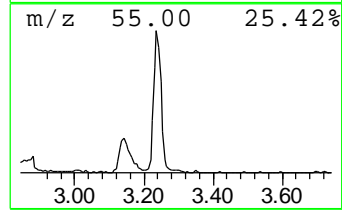
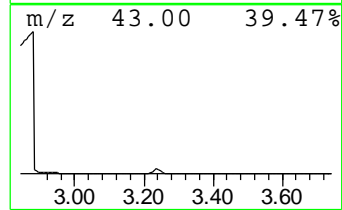
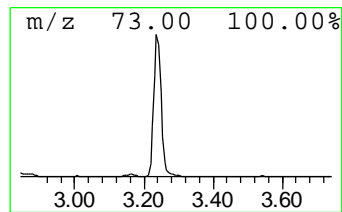
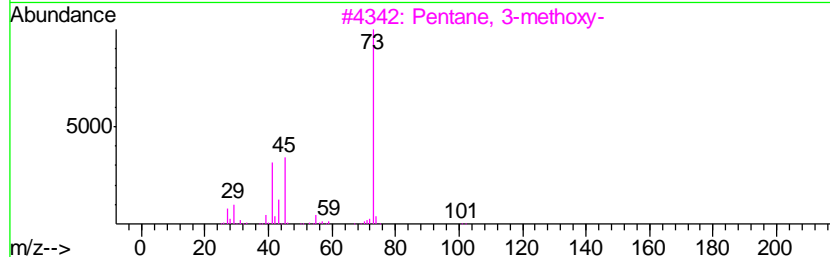
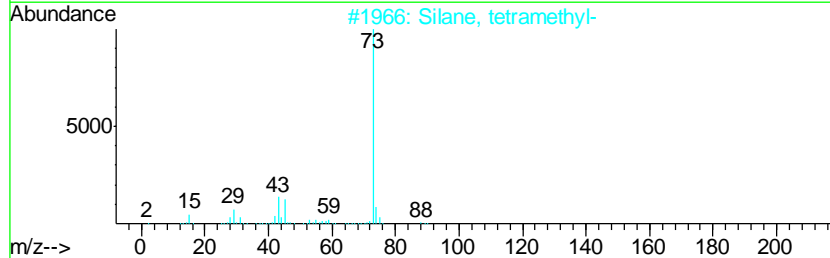
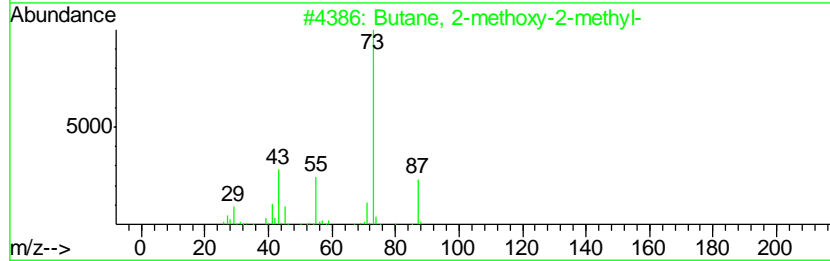
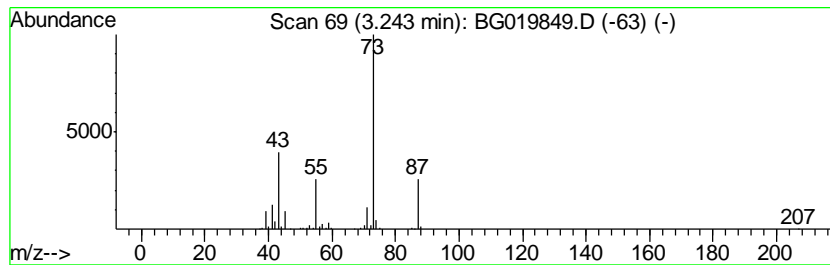
Quant Method : Z:\HPCHEM1\BNA_G\METHODS\8270-BG120215.M
 Quant Title : ASP BNA STANDARDS FOR 5 POINT CALIBRATION

TIC Library : C:\DATABASE\NIST02.L
 TIC Integration Parameters: LSCINT.P

 Peak Number 3 Butane, 2-methoxy-2-methyl- Concentration Rank 4

R.T.	EstConc	Area	Relative to ISTD	R.T.
3.24	42.62 ng	295529	1,4-Dichlorobenzene-d4	8.13

Hit#	of	Tentative ID	MW	MolForm	CAS#	Qual
1	5	Butane, 2-methoxy-2-methyl-	102	C6H14O	000994-05-8	83
2		Silane, tetramethyl-	88	C4H12Si	000075-76-3	16
3		Pentane, 3-methoxy-	102	C6H14O	036839-67-5	12
4		N-Ethylformamide	73	C3H7NO	000627-45-2	9
5		1,3-Dioxolane, 2-methyl-	88	C4H8O2	000497-26-7	9



Data Path : Z:\HPCHEM1\BNA_G\DATA\BG120215\
 Data File : BG019849.D
 Acq On : 3 Dec 2015 00:31
 Operator : UM/NP
 Sample : G4585-14
 Misc :
 ALS Vial : 16 Sample Multiplier: 1

Instrument :
 BNA_G
 ClientSampleId :
 SB-P3WC-18(0-4)

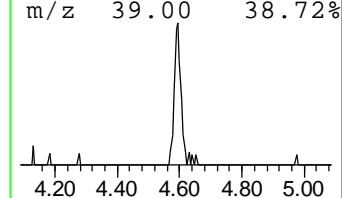
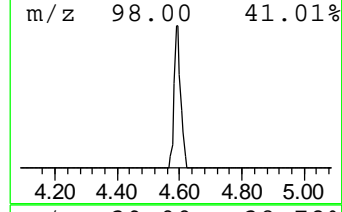
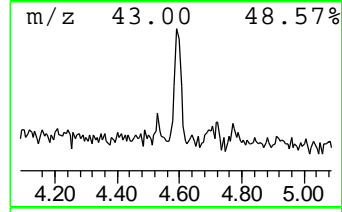
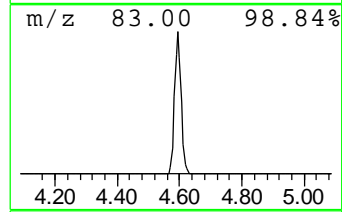
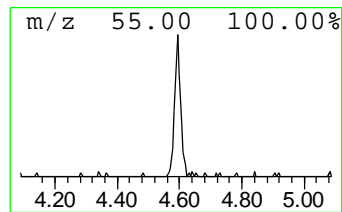
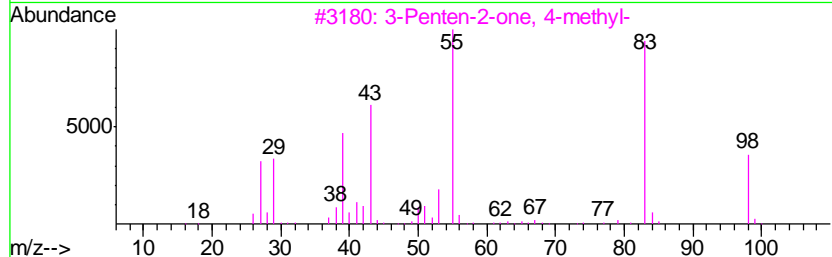
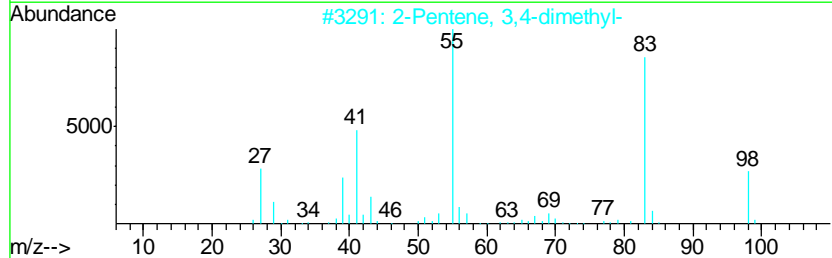
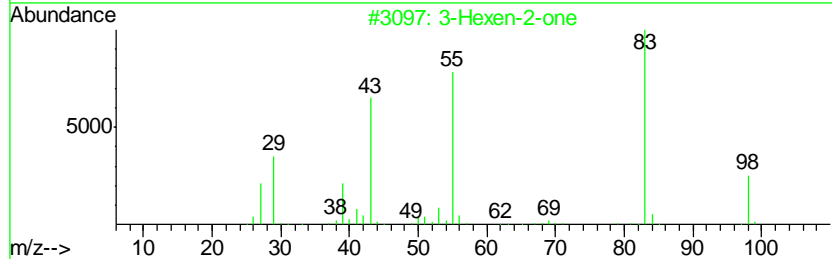
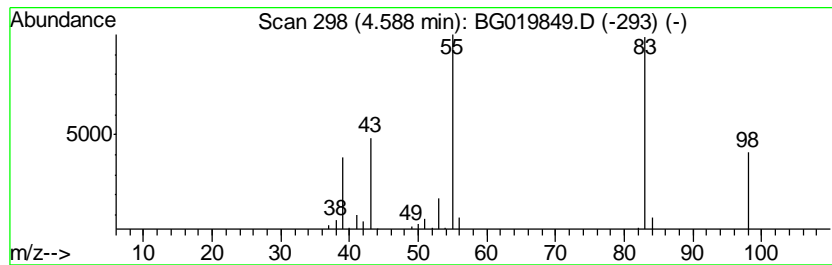
Quant Method : Z:\HPCHEM1\BNA_G\METHODS\8270-BG120215.M
 Quant Title : ASP BNA STANDARDS FOR 5 POINT CALIBRATION

TIC Library : C:\DATABASE\NIST02.L
 TIC Integration Parameters: LSCINT.P

 Peak Number 4 3-Hexen-2-one Concentration Rank 7

R.T.	EstConc	Area	Relative to ISTD	R.T.
4.59	5.35 ng	37079	1,4-Dichlorobenzene-d4	8.13

Hit#	of	Tentative ID	MW	MolForm	CAS#	Qual
1	5	3-Hexen-2-one	98	C6H10O	000763-93-9	86
2		2-Pentene, 3,4-dimethyl-	98	C7H14	024910-63-2	86
3		3-Penten-2-one, 4-methyl-	98	C6H10O	000141-79-7	80
4		2-Pentene, 2,4-dimethyl-	98	C7H14	000625-65-0	80
5		2-Pentene, 3,4-dimethyl-, (Z)-	98	C7H14	004914-91-4	72



Data Path : Z:\HPCHEM1\BNA_G\DATA\BG120215\
 Data File : BG019849.D
 Acq On : 3 Dec 2015 00:31
 Operator : UM/NP
 Sample : G4585-14
 Misc :
 ALS Vial : 16 Sample Multiplier: 1

Instrument :
 BNA_G
 ClientSampleId :
 SB-P3WC-18(0-4)

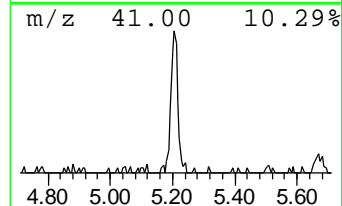
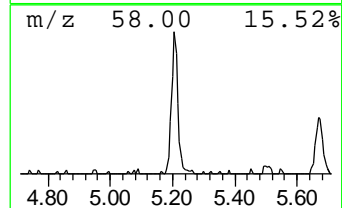
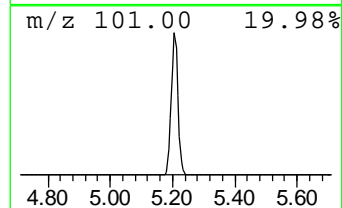
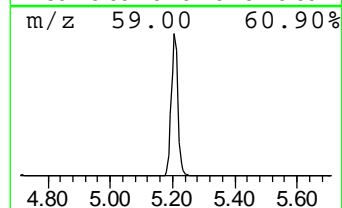
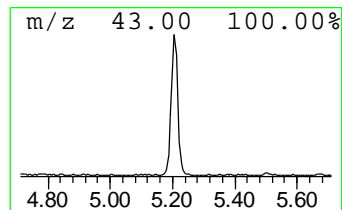
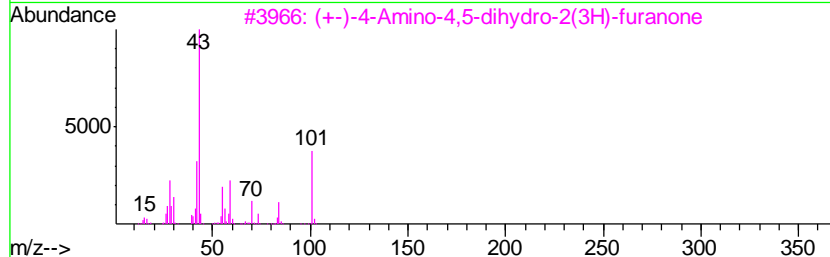
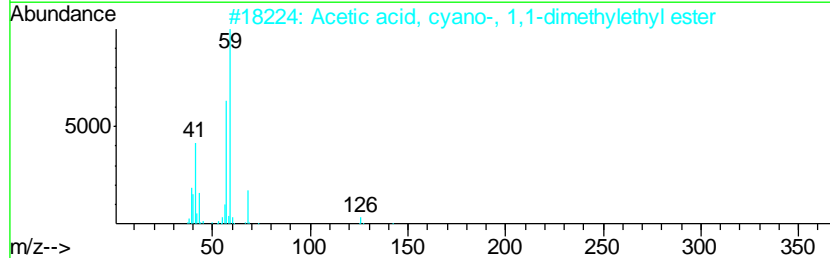
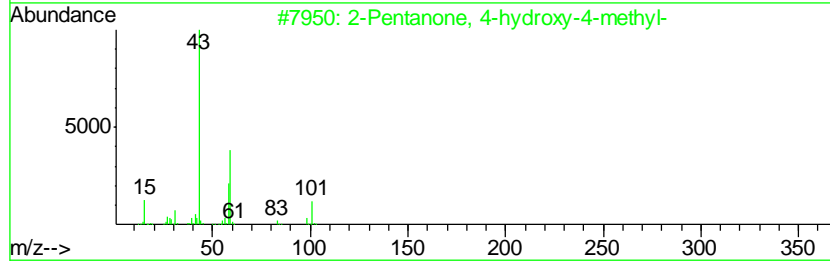
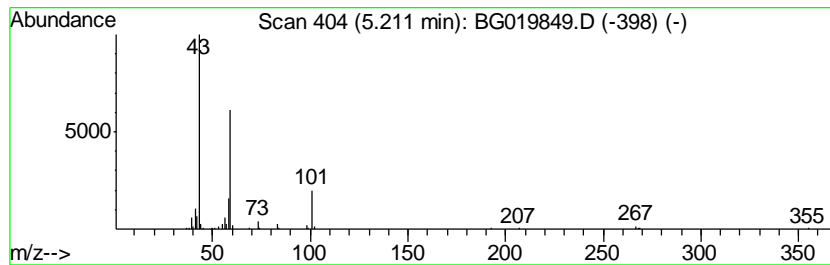
Quant Method : Z:\HPCHEM1\BNA_G\METHODS\8270-BG120215.M
 Quant Title : ASP BNA STANDARDS FOR 5 POINT CALIBRATION

TIC Library : C:\DATABASE\NIST02.L
 TIC Integration Parameters: LSCINT.P

 Peak Number 5 2-Pentanone, 4-hydroxy-4-me... Concentration Rank 5

R.T.	EstConc	Area	Relative to ISTD	R.T.
5.21	24.65 ng	170922	1,4-Dichlorobenzene-d4	8.13

Hit#	of	Tentative ID	MW	MolForm	CAS#	Qual
1	5	2-Pentanone, 4-hydroxy-4-methyl-	116	C6H12O2	000123-42-2	56
2		Acetic acid, cyano-, 1,1-dimethy...	141	C7H11NO2	001116-98-9	23
3		(+)-4-Amino-4,5-dihydro-2(3H)-f...	101	C4H7NO2	016504-58-8	9
4		Morpholine, 4-methyl-	101	C5H11NO	000109-02-4	9
5		2-Propyn-1-ol, acetate	98	C5H6O2	000627-09-8	9



Data Path : Z:\HPCHEM1\BNA_G\DATA\BG120215\
 Data File : BG019849.D
 Acq On : 3 Dec 2015 00:31
 Operator : UM/NP
 Sample : G4585-14
 Misc :
 ALS Vial : 16 Sample Multiplier: 1

Instrument :
 BNA_G
 ClientSampleId :
 SB-P3WC-18(0-4)

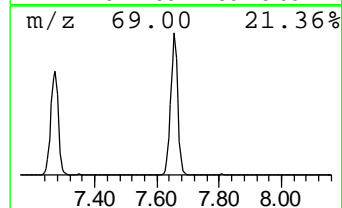
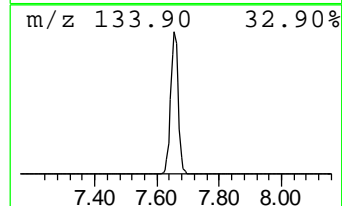
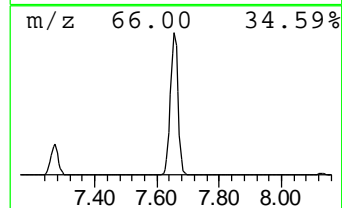
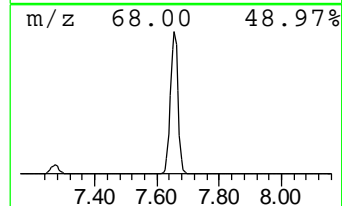
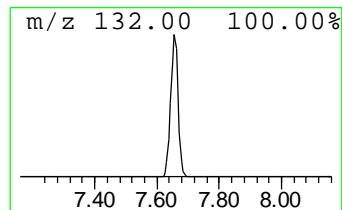
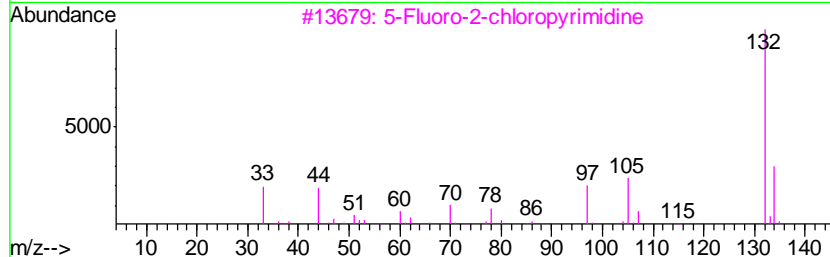
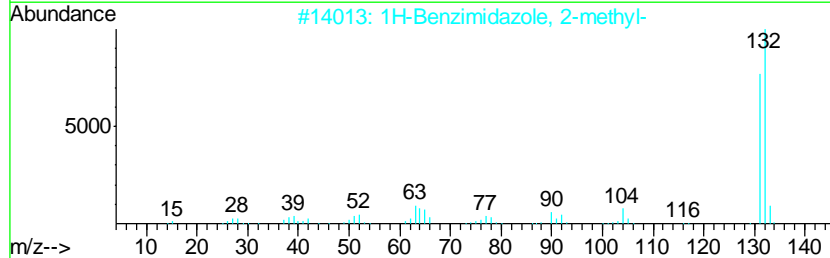
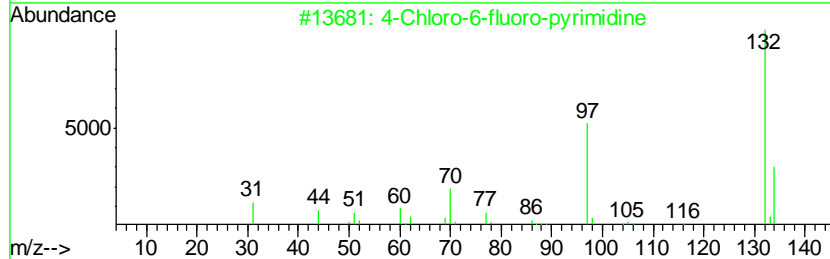
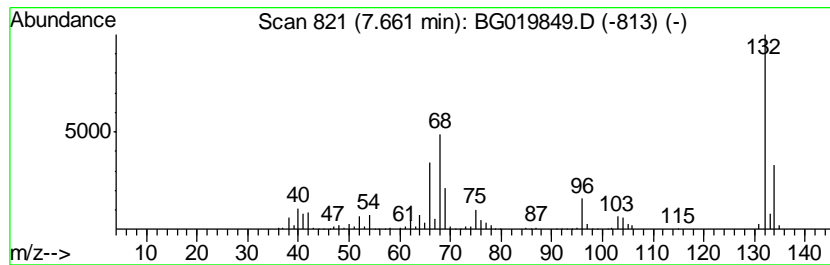
Quant Method : Z:\HPCHEM1\BNA_G\METHODS\8270-BG120215.M
 Quant Title : ASP BNA STANDARDS FOR 5 POINT CALIBRATION

TIC Library : C:\DATABASE\NIST02.L
 TIC Integration Parameters: LSCINT.P

 Peak Number 6 unknown7.66 Concentration Rank 2

R.T.	EstConc	Area	Relative to ISTD	R.T.
7.66	108.27 ng	750682	1,4-Dichlorobenzene-d4	8.13

Hit#	of	Tentative ID	MW	MolForm	CAS#	Qual
1	5	4-Chloro-6-fluoro-pyrimidine	132	C4H2ClFN2	051422-01-6	27
2		1H-Benzimidazole, 2-methyl-	132	C8H8N2	000615-15-6	22
3		5-Fluoro-2-chloropyrimidine	132	C4H2ClFN2	062802-42-0	16
4		2H-Cyclopenta[d]pyridazine, 2-me...	132	C8H8N2	022291-85-6	16
5		3-Chloro-6-fluoro-pyrazine	132	C4H2ClFN2	1000146-10-7	16



Data Path : Z:\HPCHEM1\BNA_G\DATA\BG120215\
Data File : BG019849.D
Acq On : 3 Dec 2015 00:31
Operator : UM/NP
Sample : G4585-14
Misc :
ALS Vial : 16 Sample Multiplier: 1

Instrument :
BNA_G
ClientSampleId :
SB-P3WC-18(0-4)

Quant Method : Z:\HPCHEM1\BNA_G\METHODS\8270-BG120215.M
Quant Title : ASP BNA STANDARDS FOR 5 POINT CALIBRATION

TIC Library : C:\DATABASE\NIST02.L
TIC Integration Parameters: LSCINT.P

TIC Top Hit name	RT	EstConc	Units	Response	--Internal Standard--			
					#	RT	Resp	Conc
Acetic acid	2.88	263.3	ng	1825430	1	8.13	138666	20.0
Butane, 2-methoxy...	3.24	42.6	ng	295529	1	8.13	138666	20.0
3-Hexen-2-one	4.59	5.3	ng	37079	1	8.13	138666	20.0
2-Pentanone, 4-hy...	5.21	24.6	ng	170922	1	8.13	138666	20.0
unknown7.66	7.66	108.3	ng	750682	1	8.13	138666	20.0