

Data Path : Z:\HPCHEM1\BNA\_G\DATA\BG120415\  
 Data File : BG019922.D  
 Acq On : 5 Dec 2015 2:14  
 Operator : UM/NP  
 Sample : G4630-08  
 Misc :  
 ALS Vial : 15 Sample Multiplier: 1

Instrument :  
 BNA\_G  
 ClientSampleId :  
 MW-19

Quant Time: Dec 05 04:24:26 2015  
 Quant Method : Z:\HPCHEM1\BNA\_G\METHODS\8270-BG120215.M  
 Quant Title : ASP BNA STANDARDS FOR 5 POINT CALIBRATION  
 QLast Update : Wed Dec 02 18:50:01 2015  
 Response via : Initial Calibration

Internal Standards	R.T.	QIon	Response	Conc	Units	Dev(Min)
1) 1,4-Dichlorobenzene-d4	8.11	152	30679	20.00	ng	-0.02
21) Naphthalene-d8	10.94	136	134000	20.00	ng	-0.02
38) Acenaphthene-d10	14.74	164	94524	20.00	ng	-0.02
63) Phenanthrene-d10	17.49	188	236861	20.00	ng	-0.02
75) Chrysene-d12	21.76	240	287993	20.00	ng	-0.03
86) Perylene-d12	25.04	264	275777	20.00	ng	-0.05
System Monitoring Compounds						
5) 2-Fluorophenol	5.66	112	109966	64.78	ng	-0.01
7) Phenol-d6	7.26	99	98928	38.60	ng	-0.01
23) Nitrobenzene-d5	9.28	82	259550	98.85	ng	-0.02
41) 2,4,6-Tribromophenol	16.23	330	198603	137.32	ng	-0.02
44) 2-Fluorobiphenyl	13.37	172	637250	92.05	ng	-0.02
78) Terphenyl-d14	20.09	244	1063625	90.08	ng	-0.02

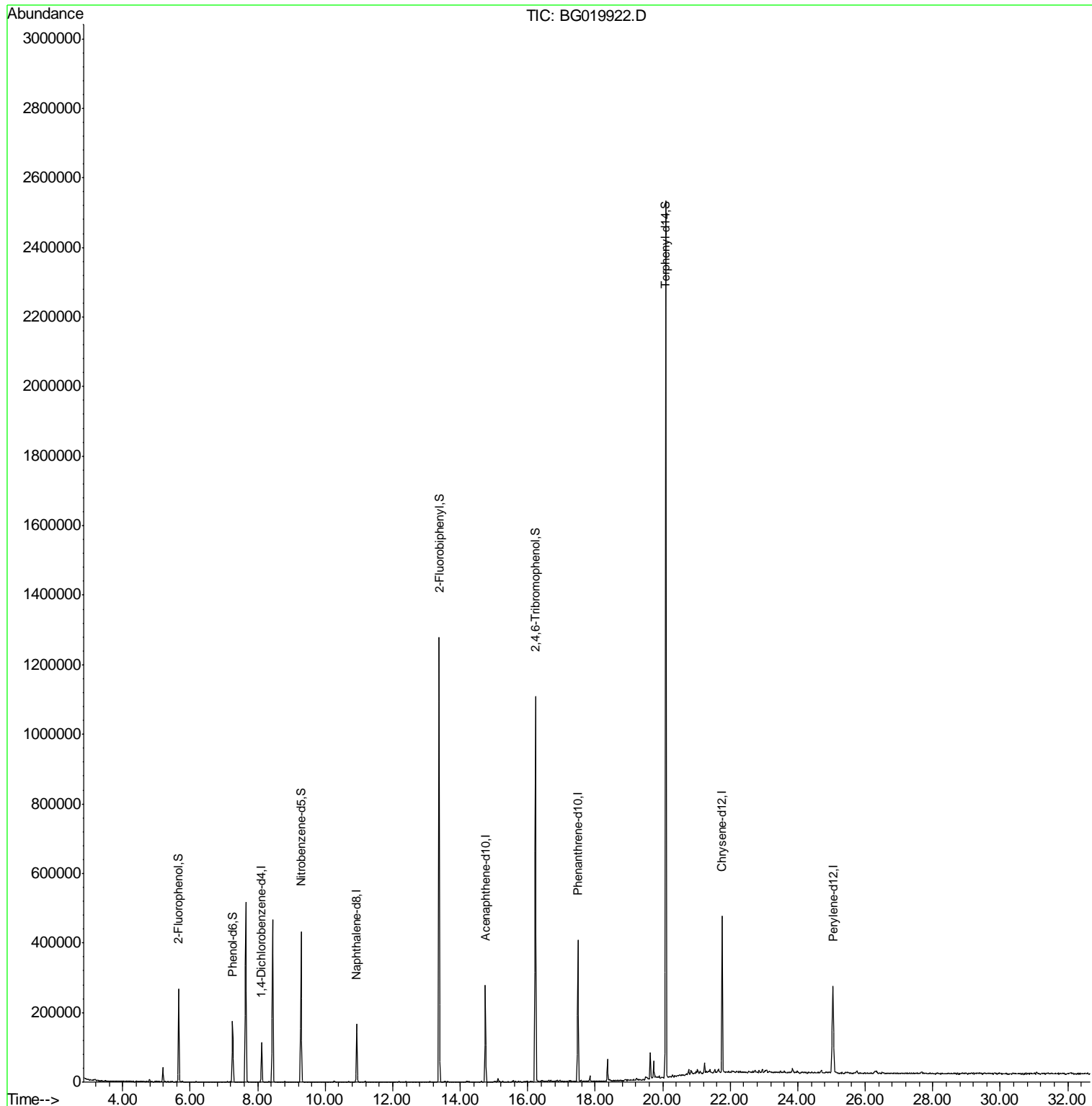
Target Compounds Qvalue

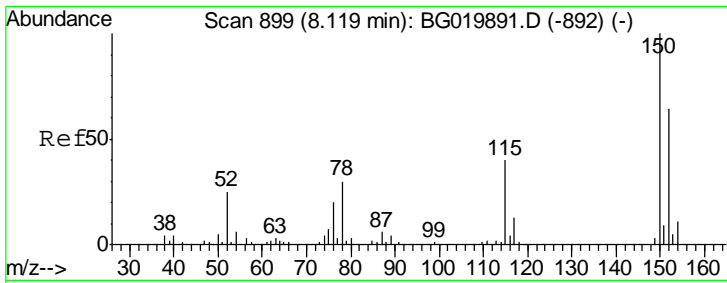
(#) = qualifier out of range (m) = manual integration (+) = signals summed

Data Path : Z:\HPCHEM1\BNA\_G\DATA\BG120415\  
 Data File : BG019922.D  
 Acq On : 5 Dec 2015 2:14  
 Operator : UM/NP  
 Sample : G4630-08  
 Misc :  
 ALS Vial : 15 Sample Multiplier: 1

Instrument :  
 BNA\_G  
 ClientSampleId :  
 MW-19

Quant Time: Dec 05 04:24:26 2015  
 Quant Method : Z:\HPCHEM1\BNA\_G\METHODS\8270-BG120215.M  
 Quant Title : ASP BNA STANDARDS FOR 5 POINT CALIBRATION  
 QLast Update : Wed Dec 02 18:50:01 2015  
 Response via : Initial Calibration

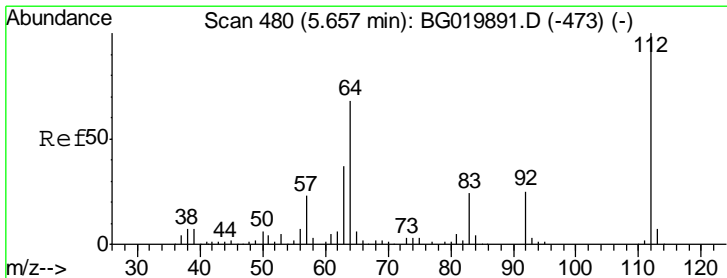
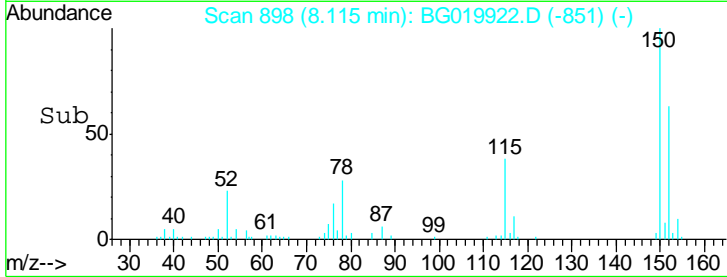
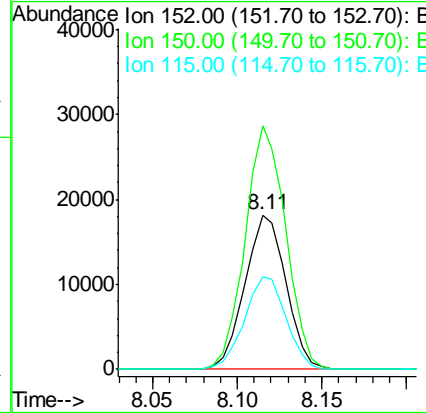
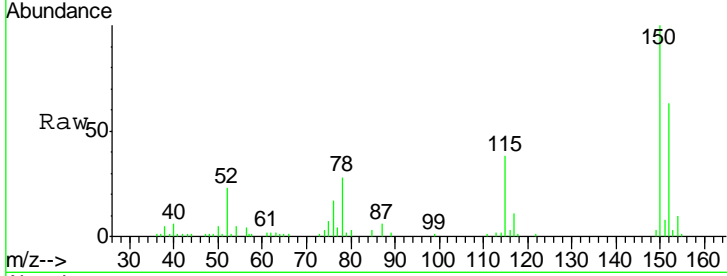




#1  
 1,4-Dichlorobenzene-d4  
 Concen: 20.00 ng  
 RT: 8.11 min Scan# 898  
 Delta R.T. -0.02 min  
 Lab File: BG019922.D  
 Acq: 5 Dec 2015 2:14

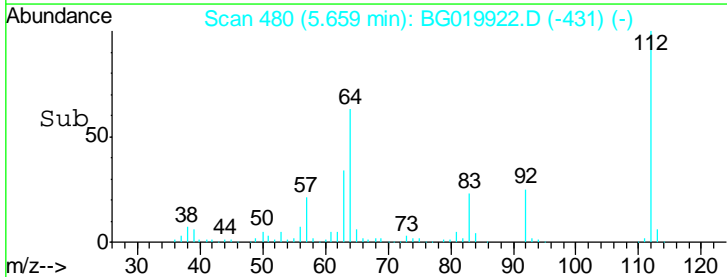
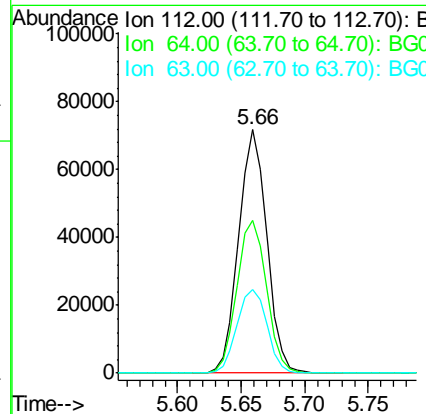
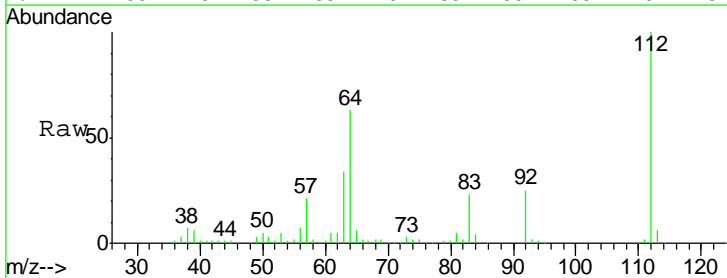
Instrument :  
 BNA\_G  
 ClientSampled :  
 MW-19

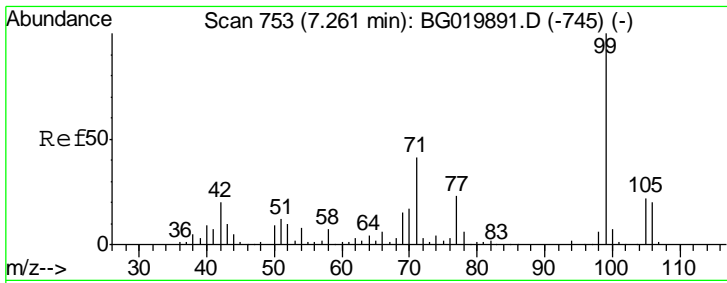
Tgt Ion	Resp	Lower	Upper
152	30679		
150	157.6	115.0	172.4
115	60.2	43.9	65.9



#5  
 2-Fluorophenol  
 Concen: 64.78 ng  
 RT: 5.66 min Scan# 480  
 Delta R.T. -0.01 min  
 Lab File: BG019922.D  
 Acq: 5 Dec 2015 2:14

Tgt Ion	Resp	Lower	Upper
112	109966		
64	62.6	43.7	65.5
63	34.3	24.0	36.0

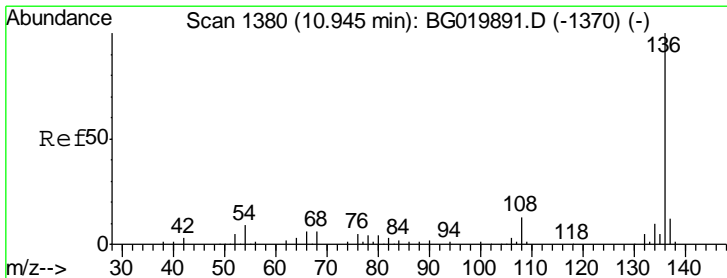
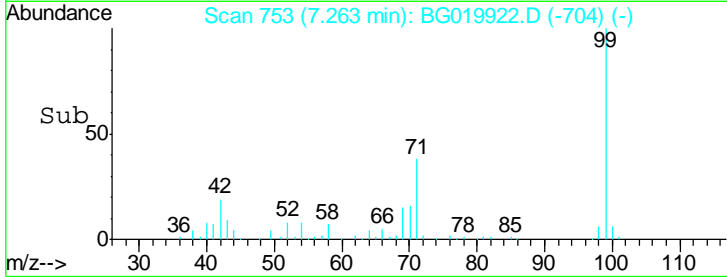
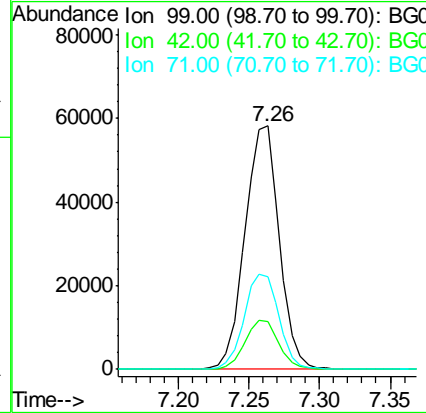
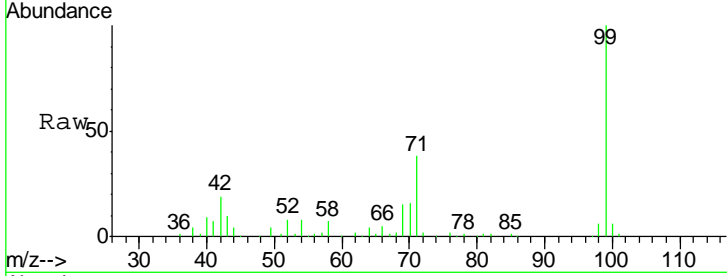




#7  
 Phenol-d6  
 Concen: 38.60 ng  
 RT: 7.26 min Scan# 753  
 Delta R.T. -0.01 min  
 Lab File: BG019922.D  
 Acq: 5 Dec 2015 2:14

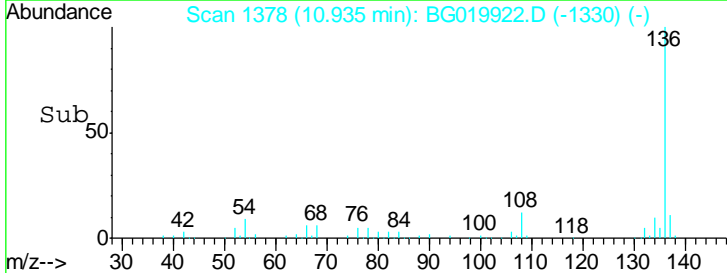
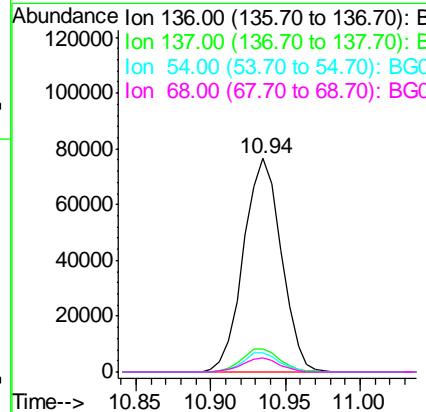
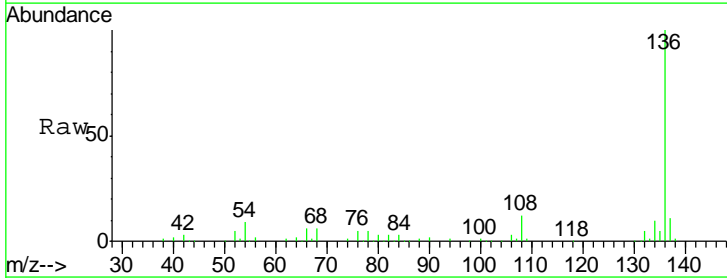
Instrument :  
 BNA\_G  
 ClientSampled :  
 MW-19

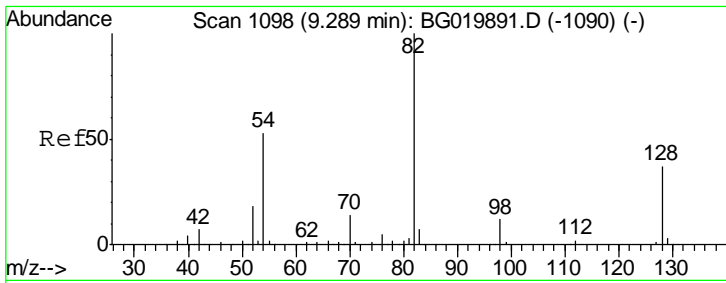
Tgt Ion	Resp	Lower	Upper
99	100		
42	19.5	11.5	17.3#
71	38.3	22.6	34.0#



#21  
 Naphthalene-d8  
 Concen: 20.00 ng  
 RT: 10.94 min Scan# 1378  
 Delta R.T. -0.02 min  
 Lab File: BG019922.D  
 Acq: 5 Dec 2015 2:14

Tgt Ion	Resp	Lower	Upper
136	100		
137	10.9	8.6	12.8
54	9.0	5.4	8.2#
68	6.5	5.3	7.9

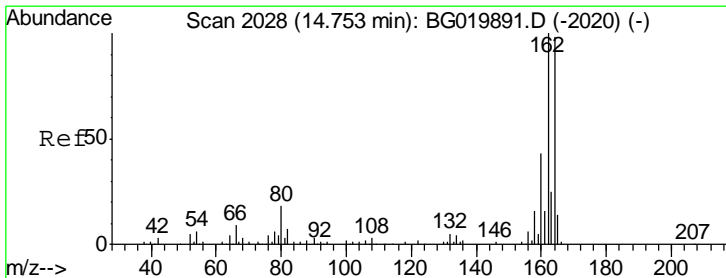
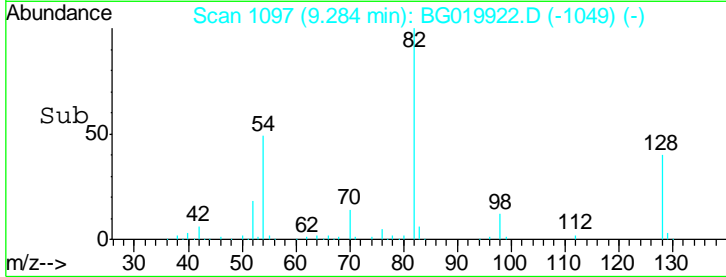
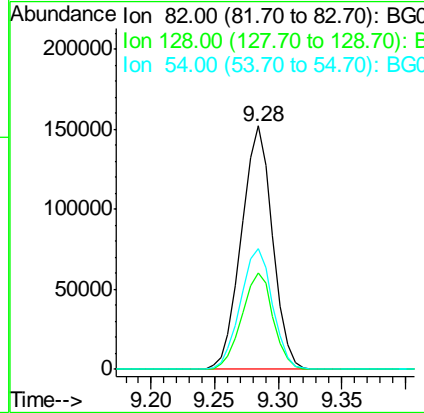
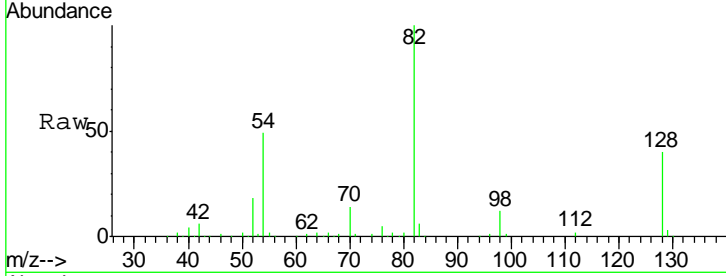




#23  
 Nitrobenzene-d5  
 Concen: 98.85 ng  
 RT: 9.28 min Scan# 1097  
 Delta R.T. -0.02 min  
 Lab File: BG019922.D  
 Acq: 5 Dec 2015 2:14

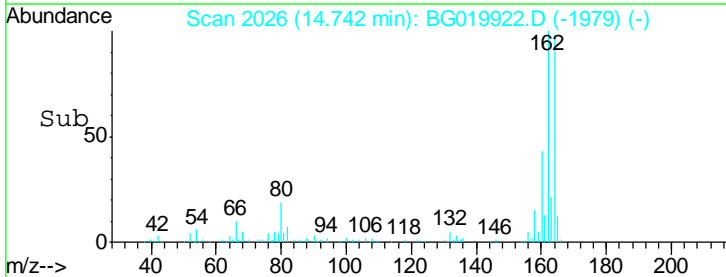
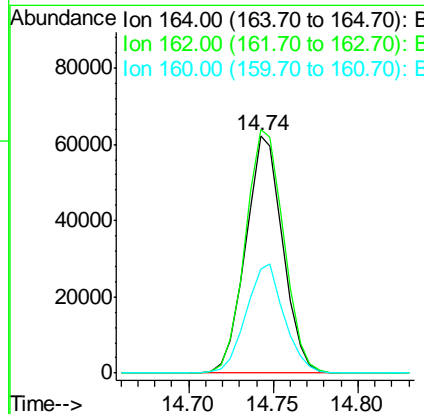
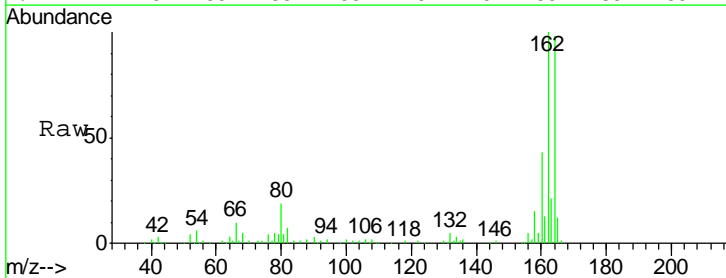
Instrument :  
 BNA\_G  
 ClientSampled :  
 MW-19

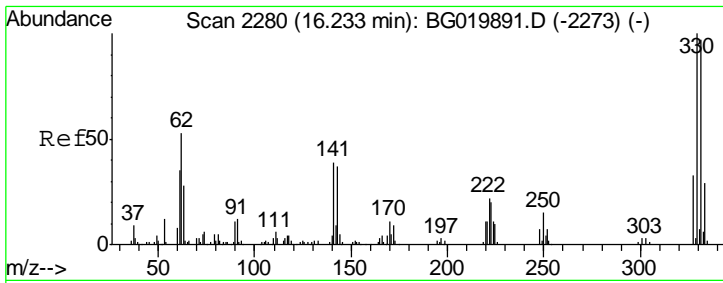
Tgt Ion	Resp	Lower	Upper
82	100		
128	39.6	36.7	55.1
54	49.5	33.8	50.8



#38  
 Acenaphthene-d10  
 Concen: 20.00 ng  
 RT: 14.74 min Scan# 2026  
 Delta R.T. -0.02 min  
 Lab File: BG019922.D  
 Acq: 5 Dec 2015 2:14

Tgt Ion	Resp	Lower	Upper
164	100		
162	102.5	78.8	118.2
160	43.7	36.4	54.6

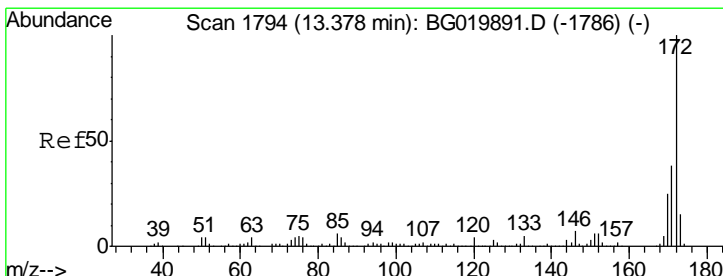
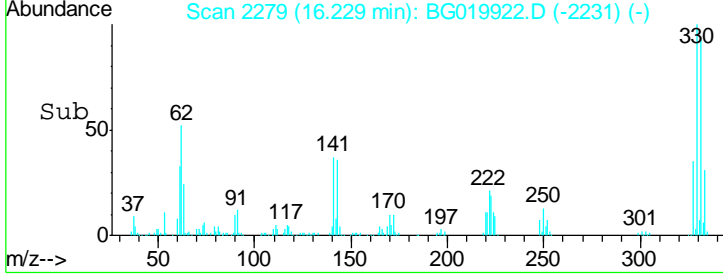
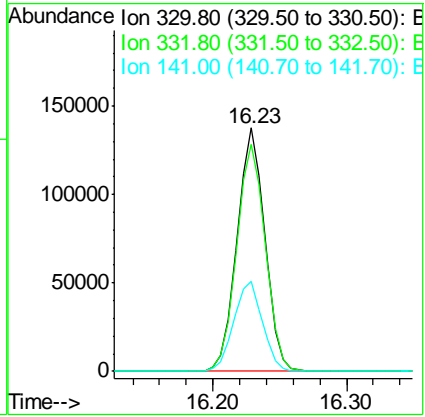
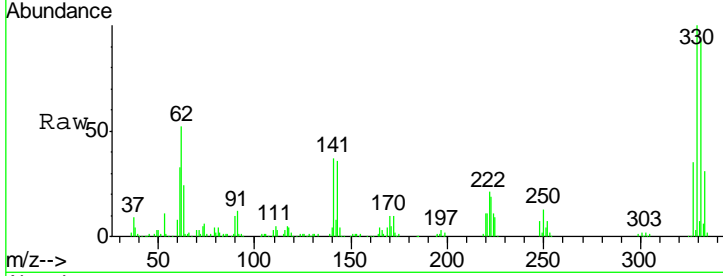




#41  
 2,4,6-Tribromophenol  
 Concen: 137.32 ng  
 RT: 16.23 min Scan# 2279  
 Delta R.T. -0.02 min  
 Lab File: BG019922.D  
 Acq: 5 Dec 2015 2:14

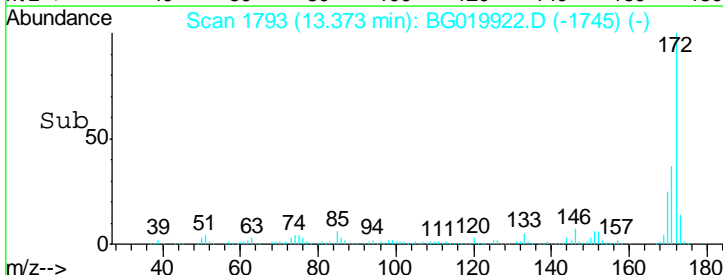
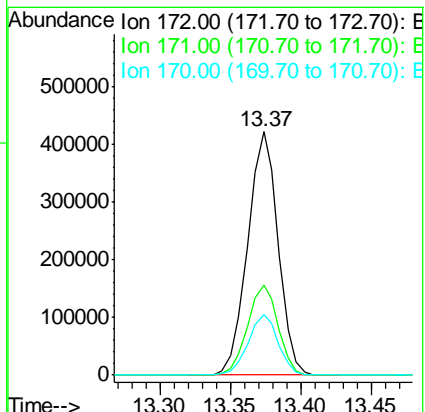
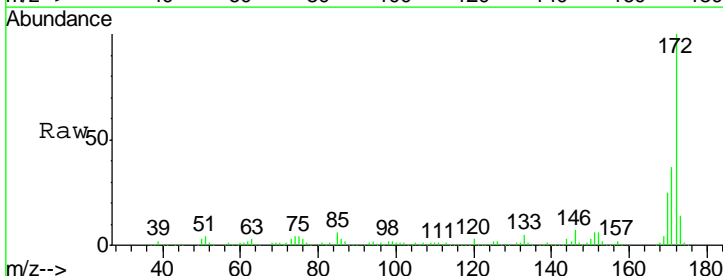
Instrument :  
 BNA\_G  
 ClientSampleId :  
 MW-19

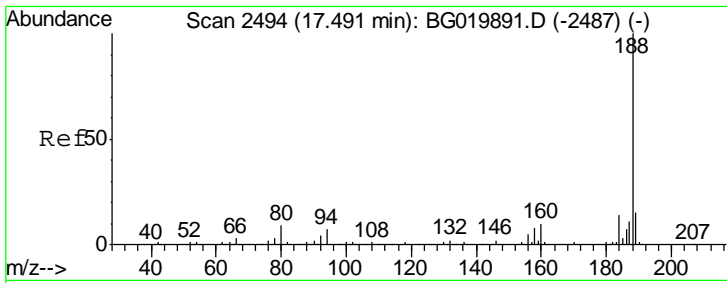
Tgt Ion	Resp	Lower	Upper
330	198603		
332	96.3	78.1	117.1
141	38.3	28.2	42.2



#44  
 2-Fluorobiphenyl  
 Concen: 92.05 ng  
 RT: 13.37 min Scan# 1793  
 Delta R.T. -0.02 min  
 Lab File: BG019922.D  
 Acq: 5 Dec 2015 2:14

Tgt Ion	Resp	Lower	Upper
172	637250		
171	37.2	29.0	43.6
170	24.6	19.9	29.9

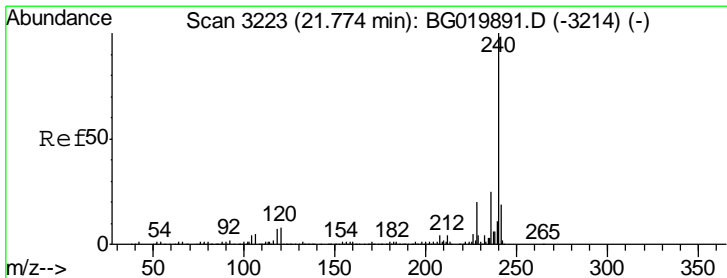
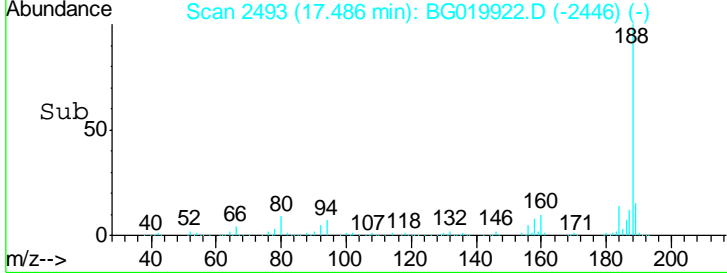
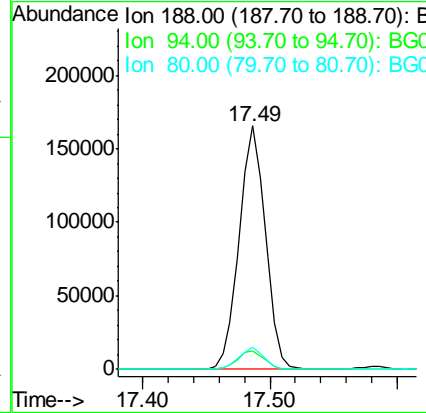
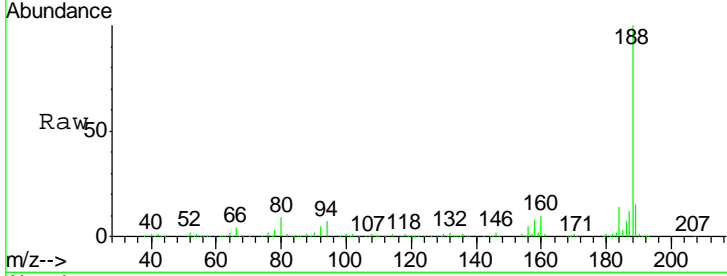




#63  
 Phenanthrene-d10  
 Concen: 20.00 ng  
 RT: 17.49 min Scan# 2493  
 Delta R.T. -0.02 min  
 Lab File: BG019922.D  
 Acq: 5 Dec 2015 2:14

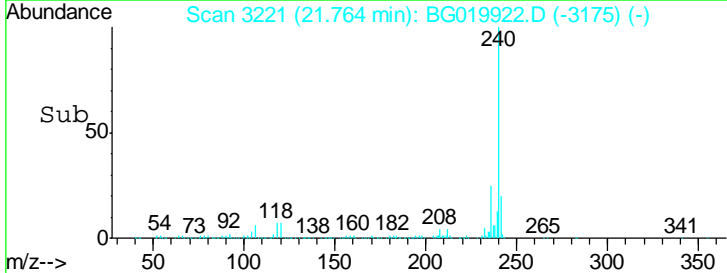
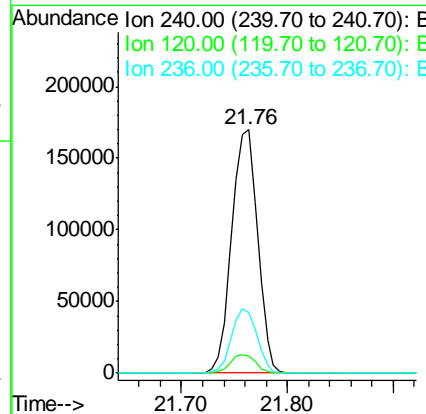
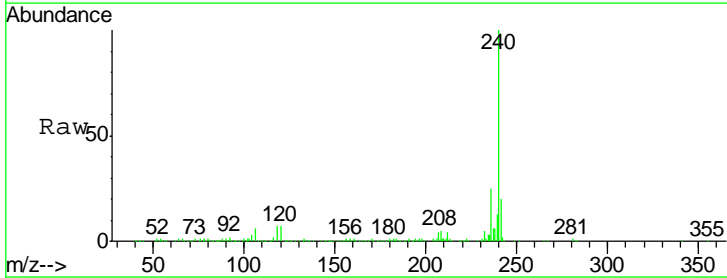
Instrument :  
 BNA\_G  
 ClientSampled :  
 MW-19

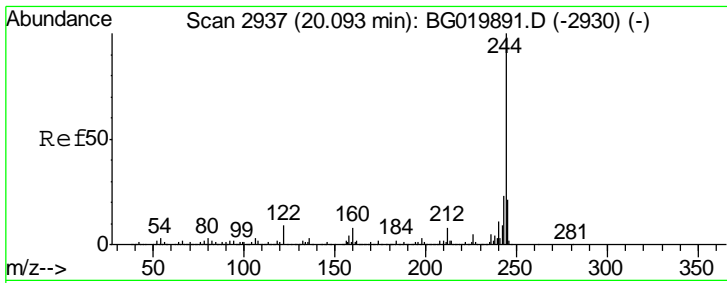
Tgt Ion	Resp	Lower	Upper
188	100		
94	7.5	7.7	11.5#
80	9.0	7.8	11.8



#75  
 Chrysene-d12  
 Concen: 20.00 ng  
 RT: 21.76 min Scan# 3221  
 Delta R.T. -0.03 min  
 Lab File: BG019922.D  
 Acq: 5 Dec 2015 2:14

Tgt Ion	Resp	Lower	Upper
240	100		
120	6.9	7.4	11.0#
236	24.9	20.7	31.1



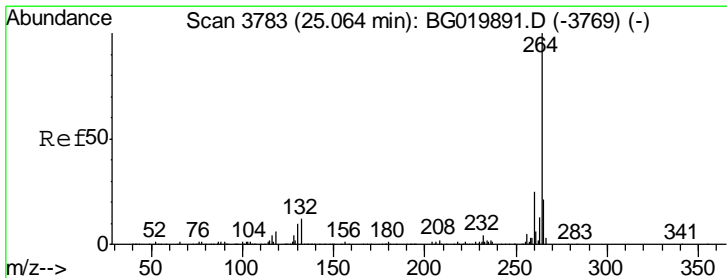
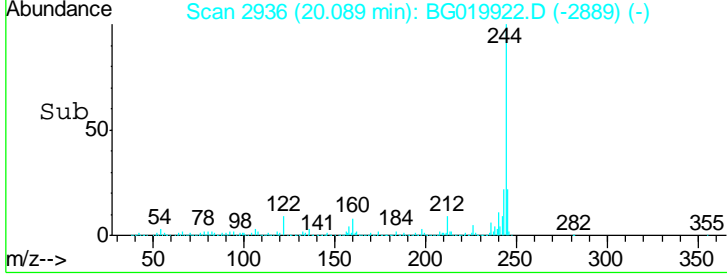
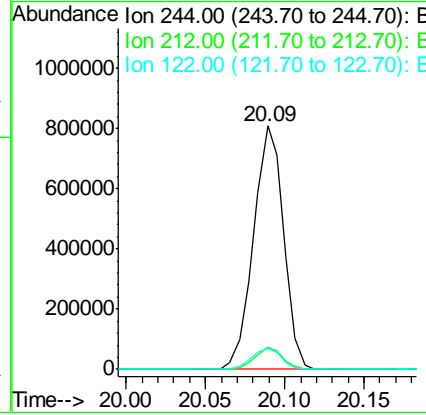
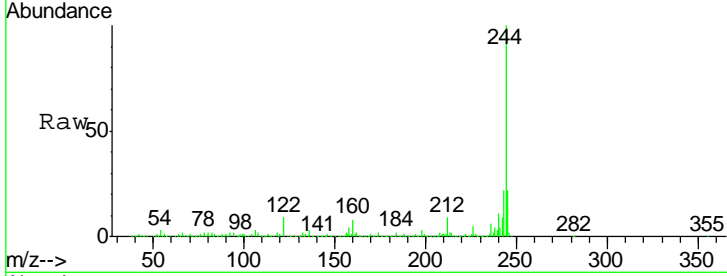


#78  
 Terphenyl-d14  
 Concen: 90.08 ng  
 RT: 20.09 min Scan# 2936  
 Delta R.T. -0.02 min  
 Lab File: BG019922.D  
 Acq: 5 Dec 2015 2:14

Instrument :  
 BNA\_G  
 ClientSampled :  
 MW-19

Tgt Ion: 244 Resp: 1063625

Ion	Ratio	Lower	Upper
244	100		
212	9.0	6.9	10.3
122	8.8	10.2	15.2#



#86  
 Perylene-d12  
 Concen: 20.00 ng  
 RT: 25.04 min Scan# 3779  
 Delta R.T. -0.05 min  
 Lab File: BG019922.D  
 Acq: 5 Dec 2015 2:14

Tgt Ion: 264 Resp: 275777

Ion	Ratio	Lower	Upper
264	100		
260	24.1	18.5	27.7
265	21.2	17.2	25.8

