

Data Path : \\74.0.250.170\SVOASRV\HPCHEM1\BNA G\DATA\BG120417\
 Data File : BG031362.D
 Acq On : 5 Dec 2017 00:53
 Operator : SJ/JU
 Sample : I6645-02
 Misc :
 ALS Vial : 15 Sample Multiplier: 1

Instrument :
 BNA_G
 ClientSampleId :
 BSC-SB-02

Quant Time: Dec 05 04:21:12 2017
 Quant Method : Z:\HPCHEM1\BNA G\METHODS\8270-BG111017.M
 Quant Title : ASP BNA STANDARDS FOR 5 POINT CALIBRATION
 QLast Update : Fri Nov 10 15:38:25 2017
 Response via : Initial Calibration

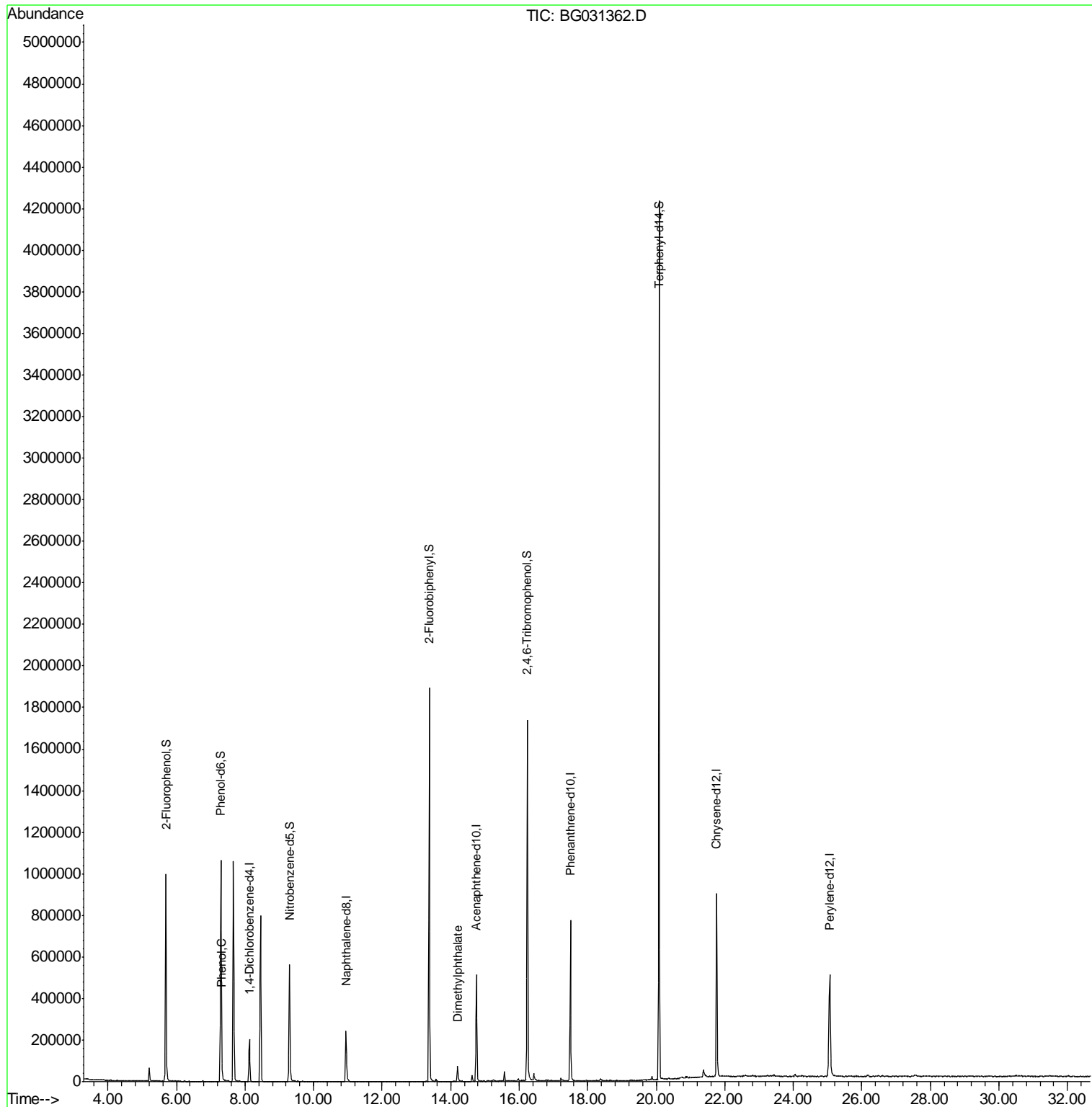
Internal Standards	R.T.	QIon	Response	Conc	Units	Dev(Min)
1) 1,4-Dichlorobenzene-d4	8.13	152	62235	20.00	ng	-0.02
21) Naphthalene-d8	10.94	136	280262	20.00	ng	-0.02
38) Acenaphthene-d10	14.75	164	197650	20.00	ng	-0.02
63) Phenanthrene-d10	17.49	188	541631	20.00	ng	-0.02
75) Chrysene-d12	21.76	240	613047	20.00	ng	-0.02
86) Perylene-d12	25.06	264	596883	20.00	ng	-0.04
System Monitoring Compounds						
5) 2-Fluorophenol	5.69	112	529955	146.02	ng	-0.02
7) Phenol-d6	7.29	99	689366	140.99	ng	-0.01
23) Nitrobenzene-d5	9.30	82	400893	84.76	ng	-0.02
41) 2,4,6-Tribromophenol	16.24	330	371971	116.34	ng	-0.02
44) 2-Fluorobiphenyl	13.38	172	1135284	82.53	ng	-0.02
78) Terphenyl-d14	20.08	244	2069093	74.53	ng	-0.02
Target Compounds						
10) Phenol	7.32	94	28477	5.608	ng	98
49) Dimethylphthalate	14.20	163	70085	4.101	ng	# 97

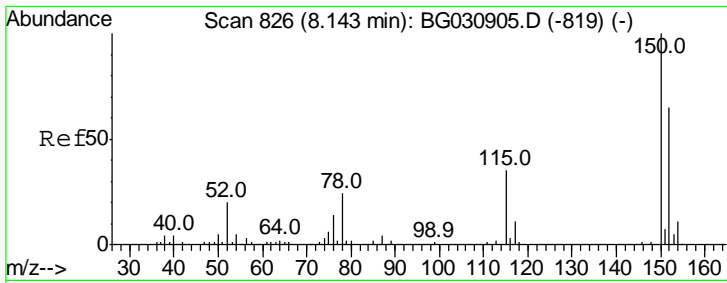
(#) = qualifier out of range (m) = manual integration (+) = signals summed

Data Path : \\74.0.250.170\SVOASRV\HPCHEM1\BNA G\DATA\BG120417\
 Data File : BG031362.D
 Acq On : 5 Dec 2017 00:53
 Operator : SJ/JU
 Sample : I6645-02
 Misc :
 ALS Vial : 15 Sample Multiplier: 1

Instrument :
 BNA_G
 ClientSampleId :
 BSC-SB-02

Quant Time: Dec 05 04:21:12 2017
 Quant Method : Z:\HPCHEM1\BNA G\METHODS\8270-BG111017.M
 Quant Title : ASP BNA STANDARDS FOR 5 POINT CALIBRATION
 QLast Update : Fri Nov 10 15:38:25 2017
 Response via : Initial Calibration

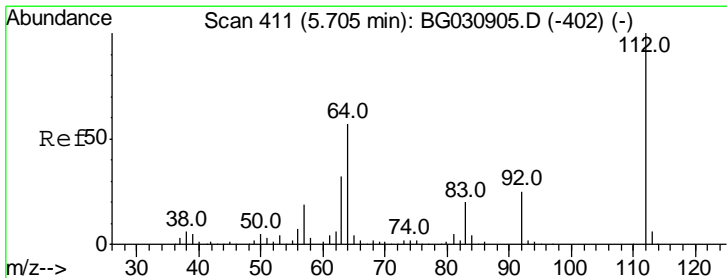
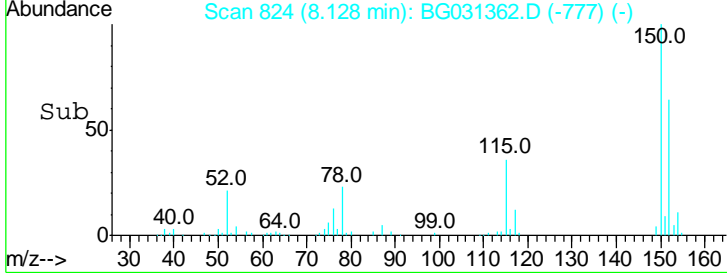
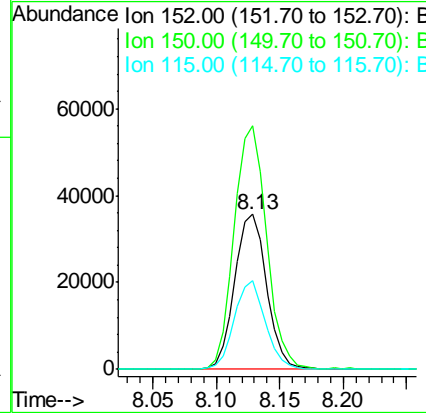
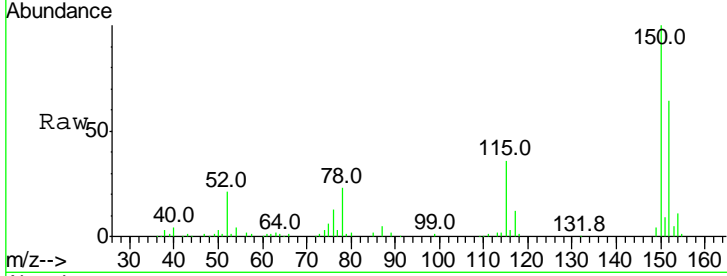




#1
 1,4-Dichlorobenzene-d4
 Concen: 20.000 ng
 RT: 8.13 min Scan# 824
 Delta R.T. -0.02 min
 Lab File: BG031362.D
 Acq: 5 Dec 2017 00:53

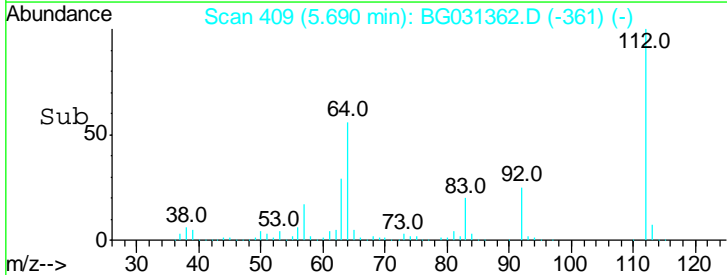
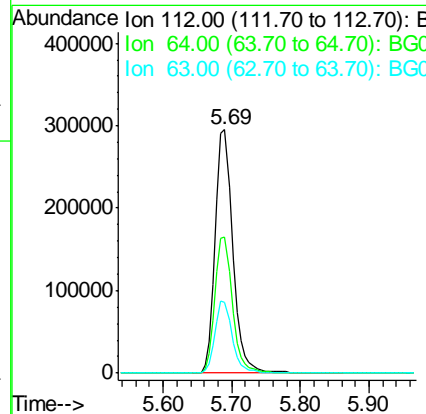
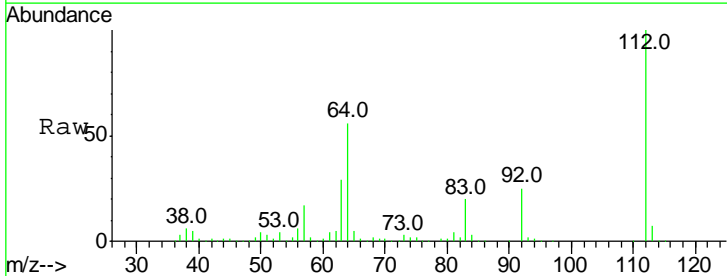
Instrument :
 BNA_G
 ClientSampled :
 BSC-SB-02

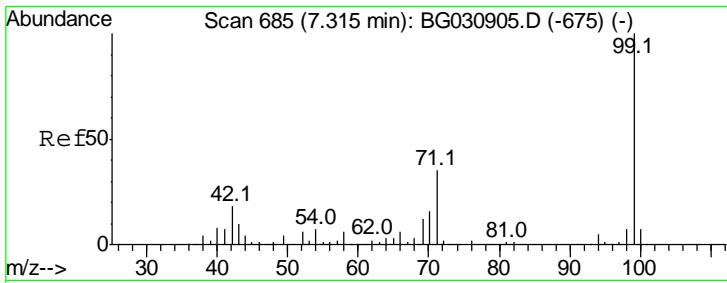
Tgt Ion	Resp	Lower	Upper
152	62235		
150	157.3	126.6	189.8
115	57.3	53.0	79.4



#5
 2-Fluorophenol
 Concen: 146.018 ng
 RT: 5.69 min Scan# 409
 Delta R.T. -0.02 min
 Lab File: BG031362.D
 Acq: 5 Dec 2017 00:53

Tgt Ion	Resp	Lower	Upper
112	529955		
64	55.8	56.3	84.5#
63	29.3	30.1	45.1#

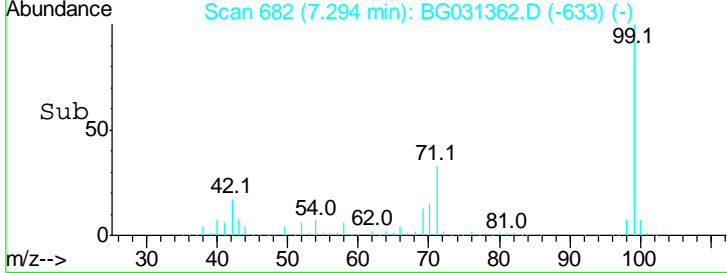
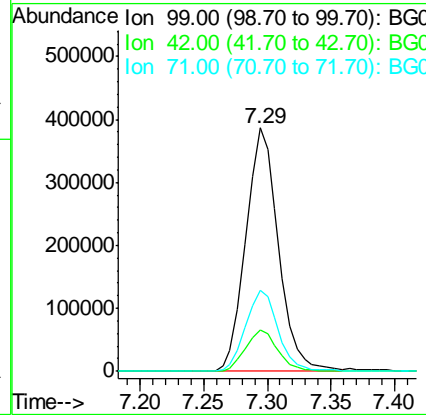
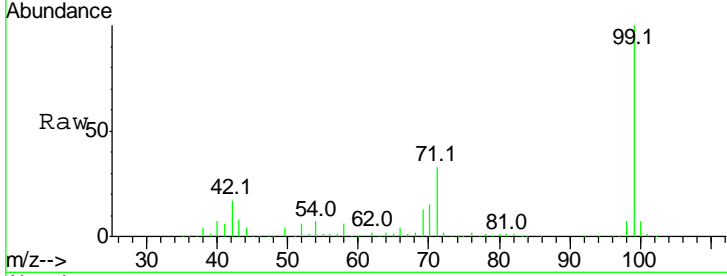




#7
 Phenol-d6
 Concen: 140.988 ng
 RT: 7.29 min Scan# 682
 Delta R.T. -0.01 min
 Lab File: BG031362.D
 Acq: 5 Dec 2017 00:53

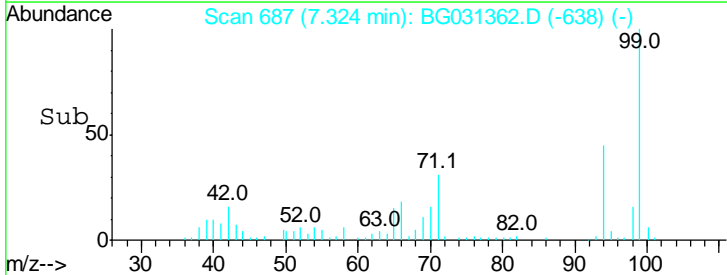
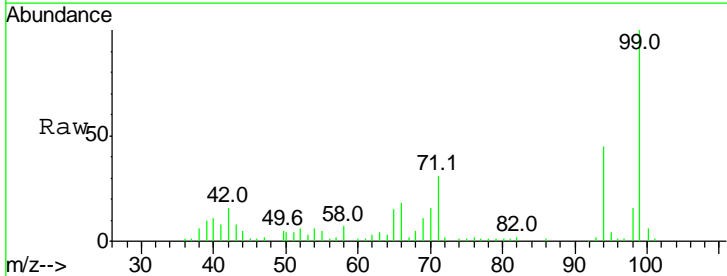
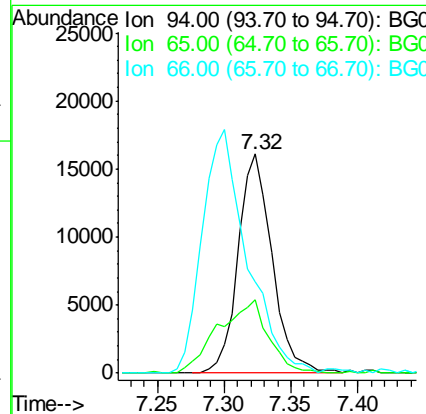
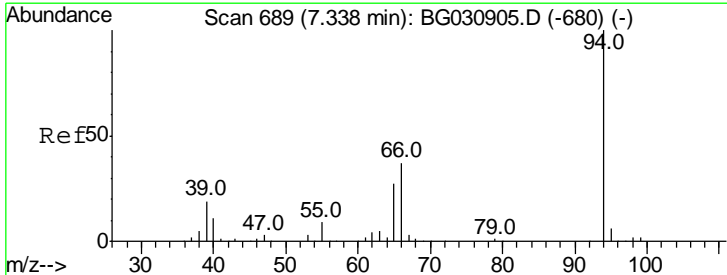
Instrument :
 BNA_G
ClientSampled :
 BSC-SB-02

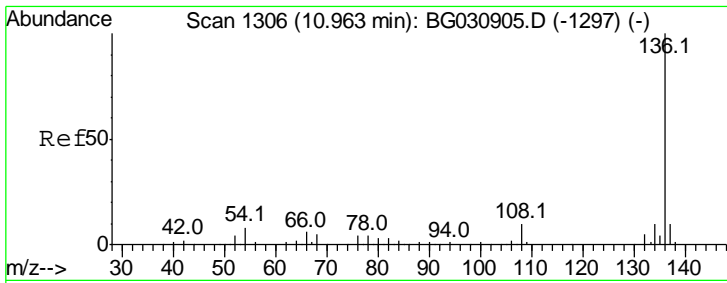
Tgt Ion	Resp	Lower	Upper
99	689366		
99	100		
42	16.9	14.1	21.1
71	33.3	26.1	39.1



#10
 Phenol
 Concen: 5.608 ng
 RT: 7.32 min Scan# 687
 Delta R.T. -0.01 min
 Lab File: BG031362.D
 Acq: 5 Dec 2017 00:53

Tgt Ion	Resp	Lower	Upper
94	28477		
94	100		
65	33.7	11.9	51.9
66	41.4	22.2	62.2



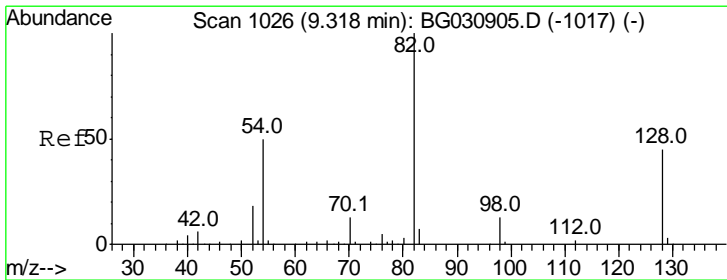
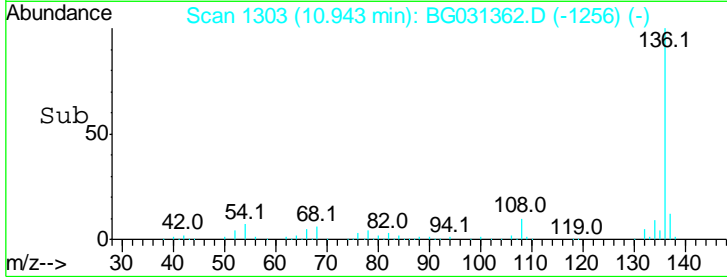
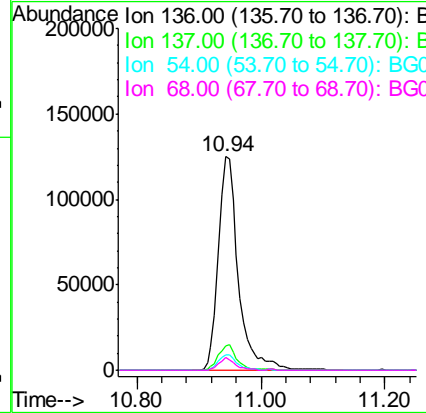
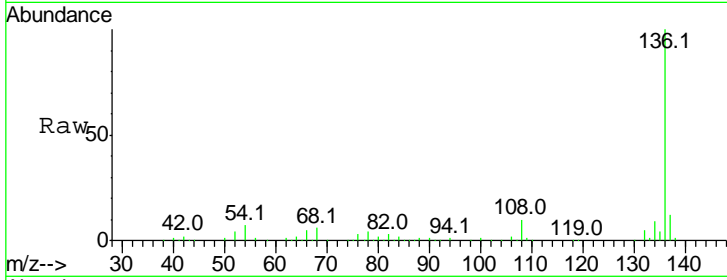


#21
 Naphthalene-d8
 Concen: 20.000 ng
 RT: 10.94 min Scan# 1303
 Delta R.T. -0.02 min
 Lab File: BG031362.D
 Acq: 5 Dec 2017 00:53

Instrument :
 BNA_G
 ClientSampled :
 BSC-SB-02

Tgt Ion: 136 Resp: 280262

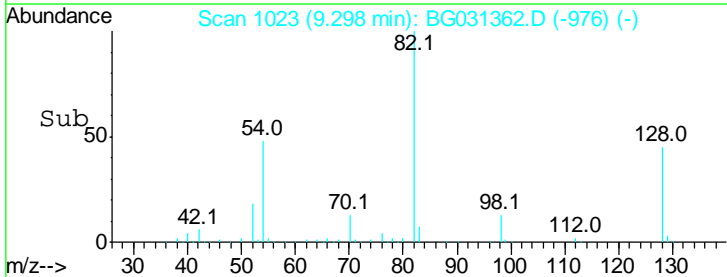
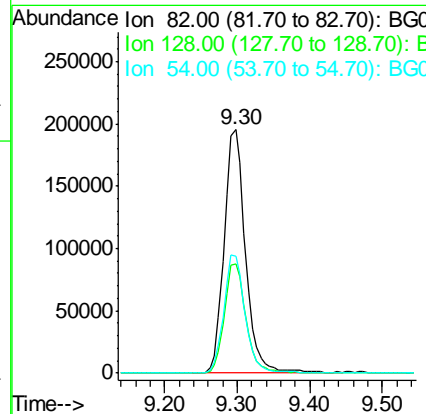
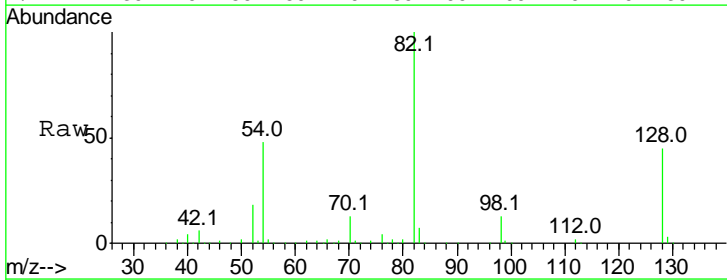
Ion	Ratio	Lower	Upper
136	100		
137	11.7	9.2	13.8
54	7.5	10.3	15.5#
68	6.1	4.5	6.7

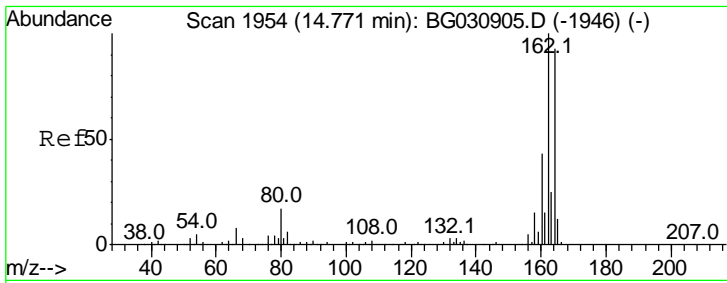


#23
 Nitrobenzene-d5
 Concen: 84.761 ng
 RT: 9.30 min Scan# 1023
 Delta R.T. -0.02 min
 Lab File: BG031362.D
 Acq: 5 Dec 2017 00:53

Tgt Ion: 82 Resp: 400893

Ion	Ratio	Lower	Upper
82	100		
128	44.9	29.7	44.5#
54	48.2	43.1	64.7

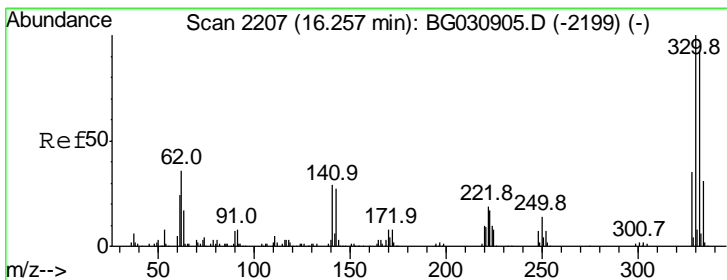
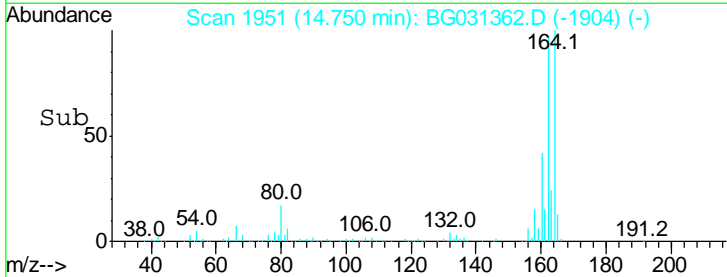
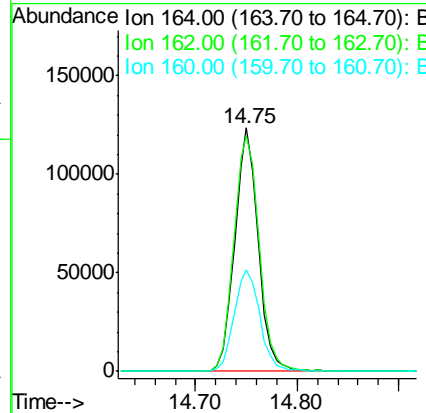
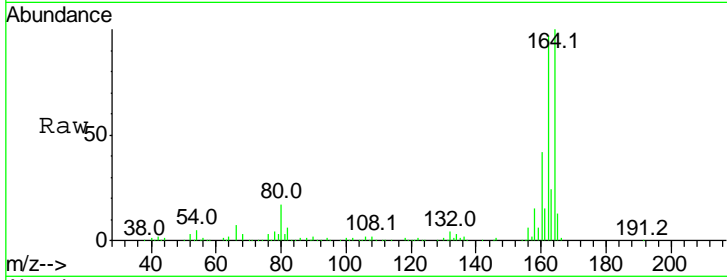




#38
 Acenaphthene-d10
 Concen: 20.000 ng
 RT: 14.75 min Scan# 1951
 Delta R.T. -0.02 min
 Lab File: BG031362.D
 Acq: 5 Dec 2017 00:53

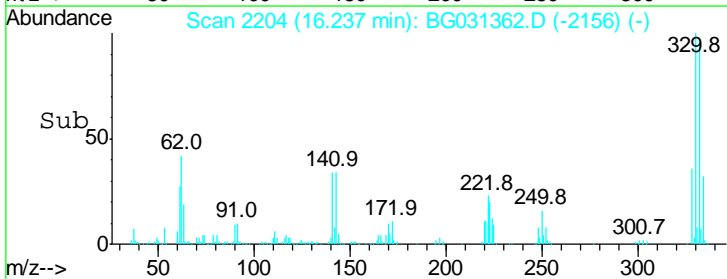
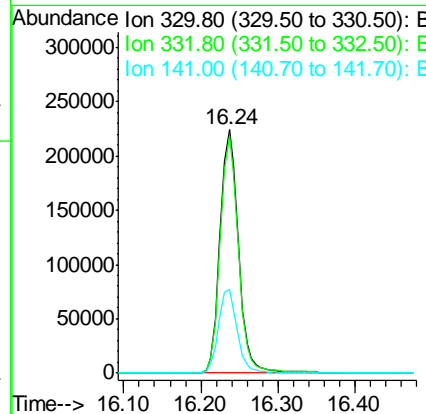
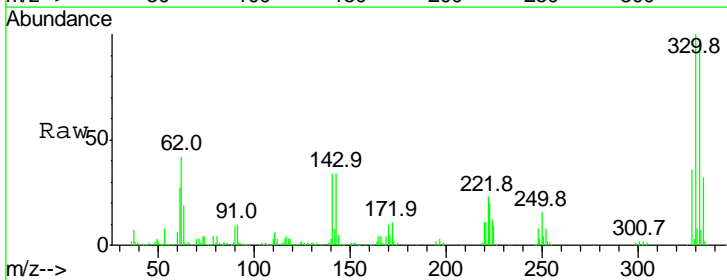
Instrument :
 BNA_G
 ClientSampled :
 BSC-SB-02

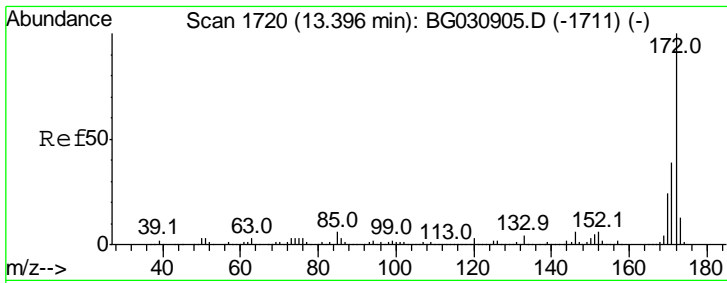
Tgt Ion	Resp	Lower	Upper
164	100		
162	97.2	78.8	118.2
160	41.8	35.4	53.0



#41
 2,4,6-Tribromophenol
 Concen: 116.338 ng
 RT: 16.24 min Scan# 2204
 Delta R.T. -0.02 min
 Lab File: BG031362.D
 Acq: 5 Dec 2017 00:53

Tgt Ion	Resp	Lower	Upper
330	100		
332	96.6	77.0	115.6
141	34.6	25.2	37.8



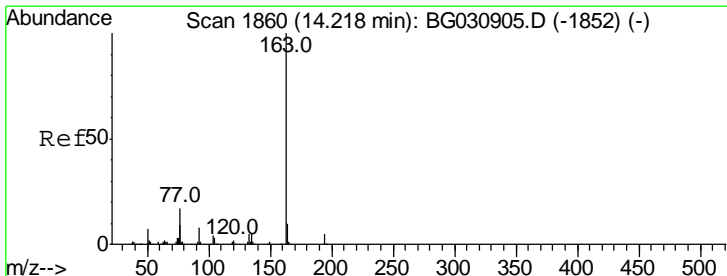
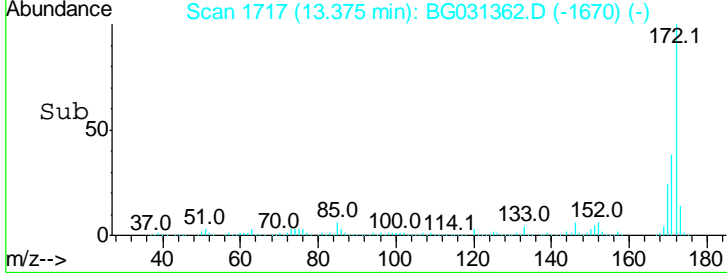
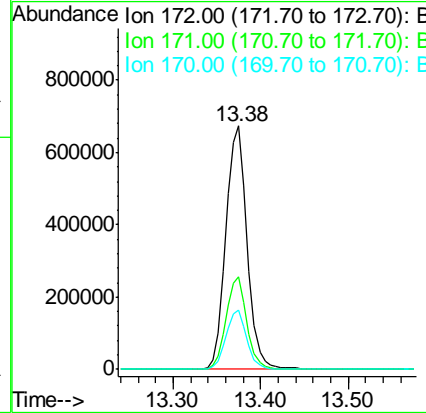
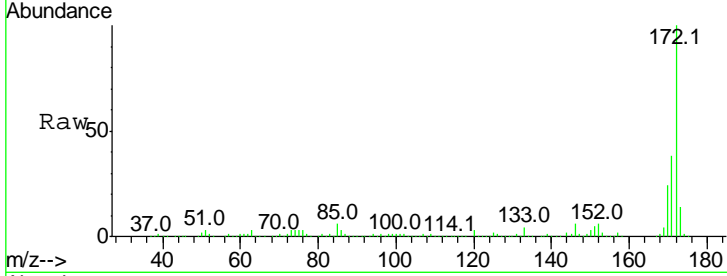


#44
 2-Fluorobiphenyl
 Concen: 82.534 ng
 RT: 13.38 min Scan# 1717
 Delta R.T. -0.02 min
 Lab File: BG031362.D
 Acq: 5 Dec 2017 00:53

Instrument :
 BNA_G
 ClientSampleId :
 BSC-SB-02

Tgt Ion:172 Resp: 1135284

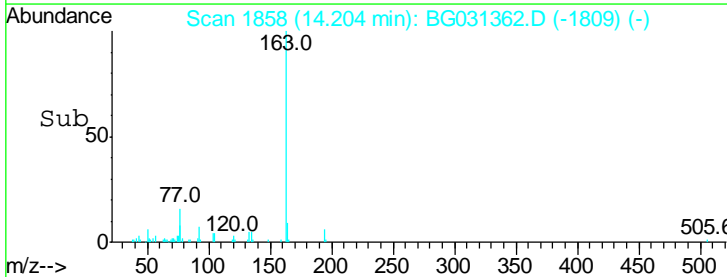
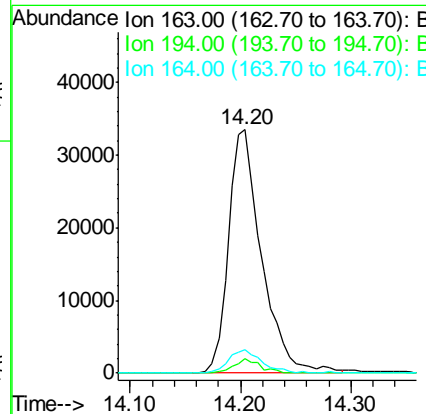
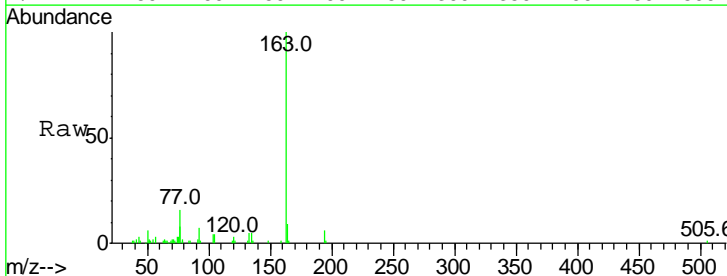
Ion	Ratio	Lower	Upper
172	100		
171	37.8	30.0	45.0
170	24.4	19.5	29.3

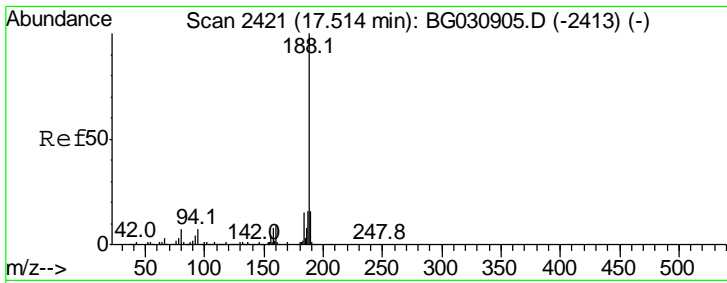


#49
 Dimethylphthalate
 Concen: 4.101 ng
 RT: 14.20 min Scan# 1858
 Delta R.T. -0.01 min
 Lab File: BG031362.D
 Acq: 5 Dec 2017 00:53

Tgt Ion:163 Resp: 70085

Ion	Ratio	Lower	Upper
163	100		
194	6.0	3.4	5.2#
164	9.4	8.2	12.4

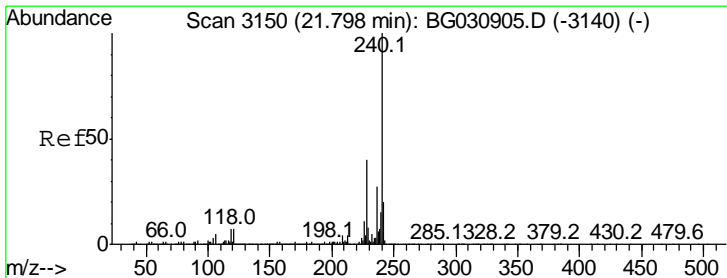
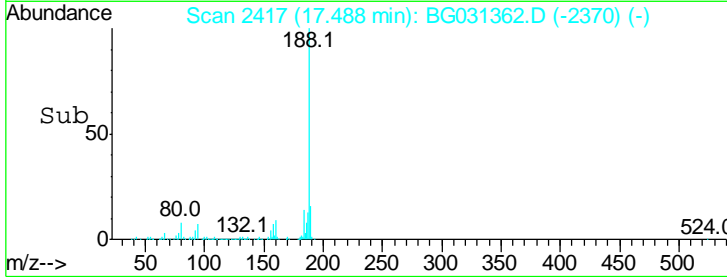
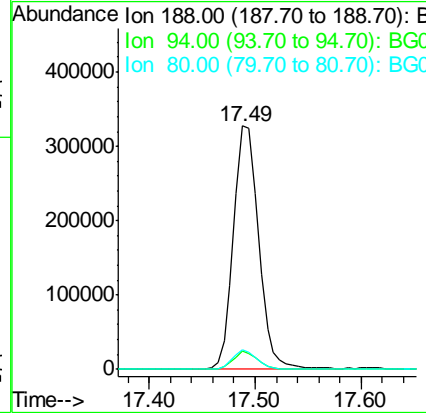
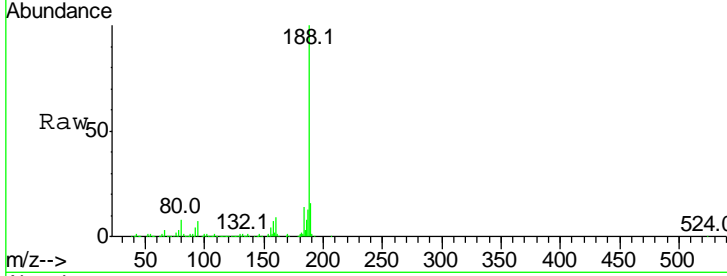




#63
 Phenanthrene-d10
 Concen: 20.000 ng
 RT: 17.49 min Scan# 2417
 Delta R.T. -0.02 min
 Lab File: BG031362.D
 Acq: 5 Dec 2017 00:53

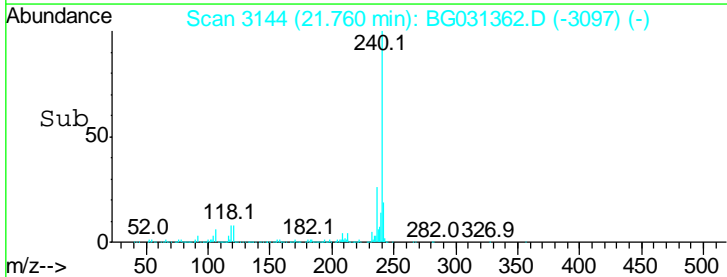
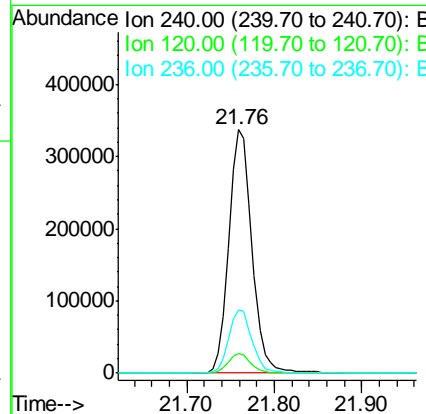
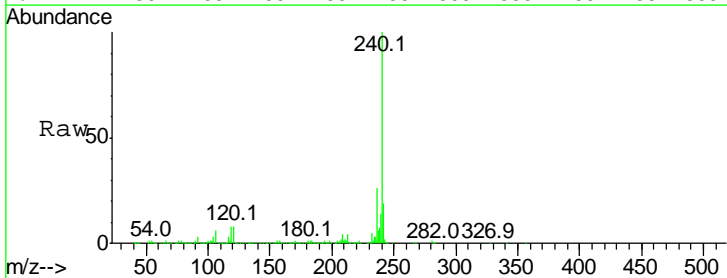
Instrument :
 BNA_G
 ClientSampled :
 BSC-SB-02

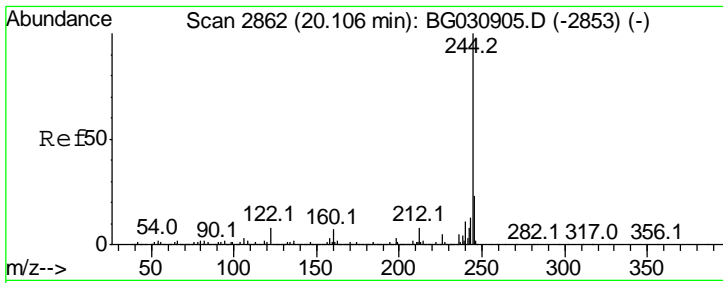
Tgt Ion	Resp	Lower	Upper
188	100		
94	7.4	6.9	10.3
80	7.9	7.7	11.5



#75
 Chrysene-d12
 Concen: 20.000 ng
 RT: 21.76 min Scan# 3144
 Delta R.T. -0.02 min
 Lab File: BG031362.D
 Acq: 5 Dec 2017 00:53

Tgt Ion	Resp	Lower	Upper
240	100		
120	8.2	6.8	10.2
236	26.1	20.9	31.3



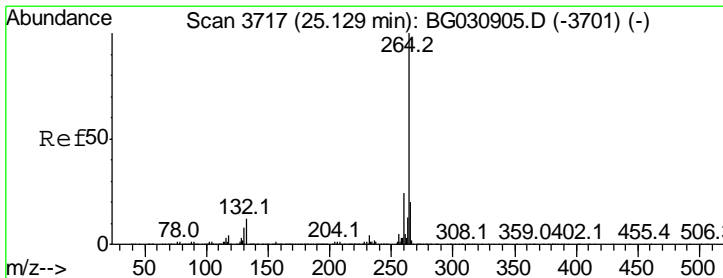
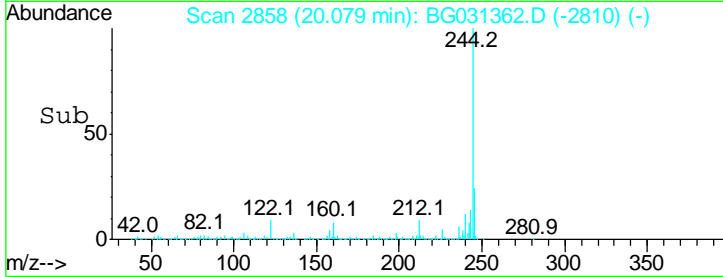
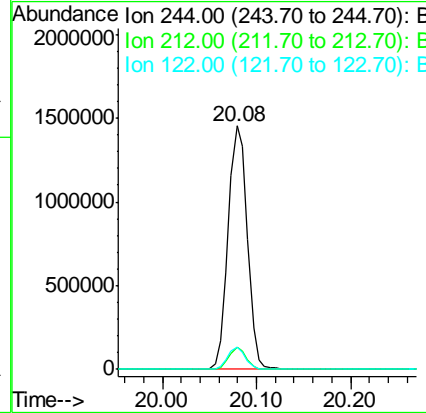
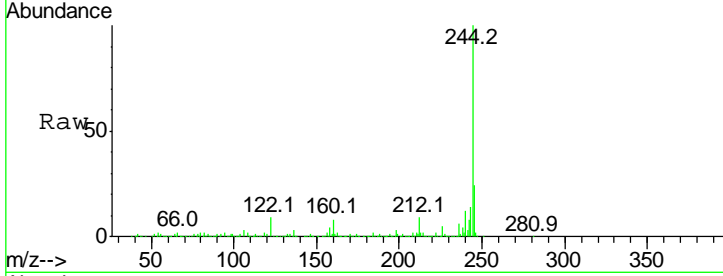


#78
 Terphenyl-d14
 Concen: 74.525 ng
 RT: 20.08 min Scan# 2858
 Delta R.T. -0.02 min
 Lab File: BG031362.D
 Acq: 5 Dec 2017 00:53

Instrument :
 BNA_G
ClientSampled :
 BSC-SB-02

Tgt Ion: 244 Resp: 2069093

Ion	Ratio	Lower	Upper
244	100		
212	9.0	5.8	8.8#
122	9.3	7.0	10.4



#86
 Perylene-d12
 Concen: 20.000 ng
 RT: 25.06 min Scan# 3705
 Delta R.T. -0.04 min
 Lab File: BG031362.D
 Acq: 5 Dec 2017 00:53

Tgt Ion: 264 Resp: 596883

Ion	Ratio	Lower	Upper
264	100		
260	23.6	17.4	26.0
265	22.0	17.7	26.5

