

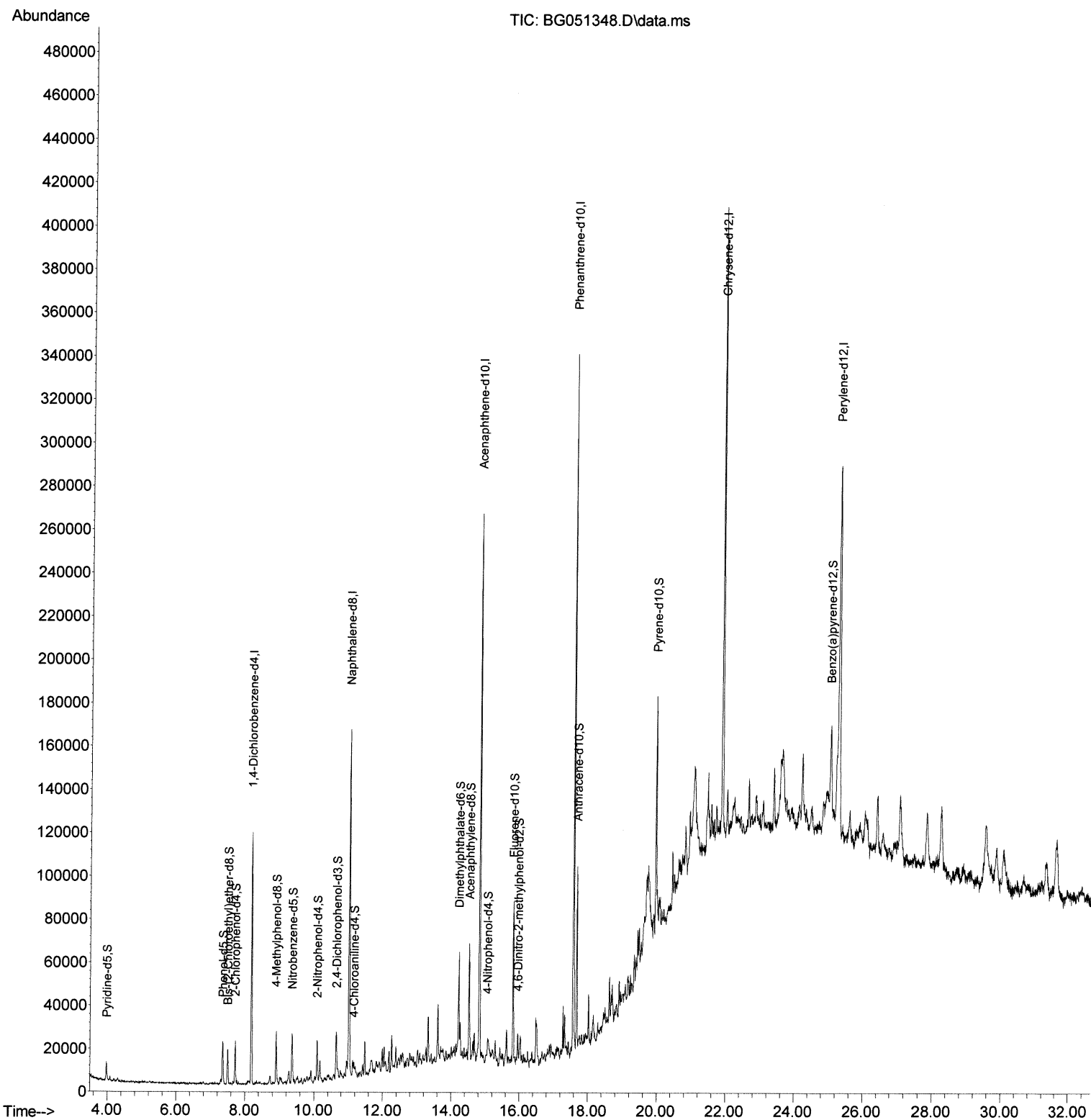
Data Path : Z:\svoasrv\HPCHEM1\BNA_G\Data\BG120621\
Data File : BG051348.D
Acq On : 6 Dec 2021 13:22
Operator : CG/JU
Sample : M4833-11 5X
Misc :
ALS Vial : 5 Sample Multiplier: 1

Instrument :
BNA_G
ClientSampleId :
ESQM9

Quant Time: Dec 06 13:58:00 2021
Quant Method : Z:\svoasrv\HPCHEM1\BNA_G\Methods\SFAM-EPA-BG112321.M
Quant Title : SVOA CALIBRATION
QLast Update : Fri Dec 03 15:23:09 2021
Response via : Initial Calibration

Manual IntegrationsAPPROVED

Reviewed By :Jagrut Upadhyay 12/06/2021
Supervised By :mohammad ahmed 12/07/2021



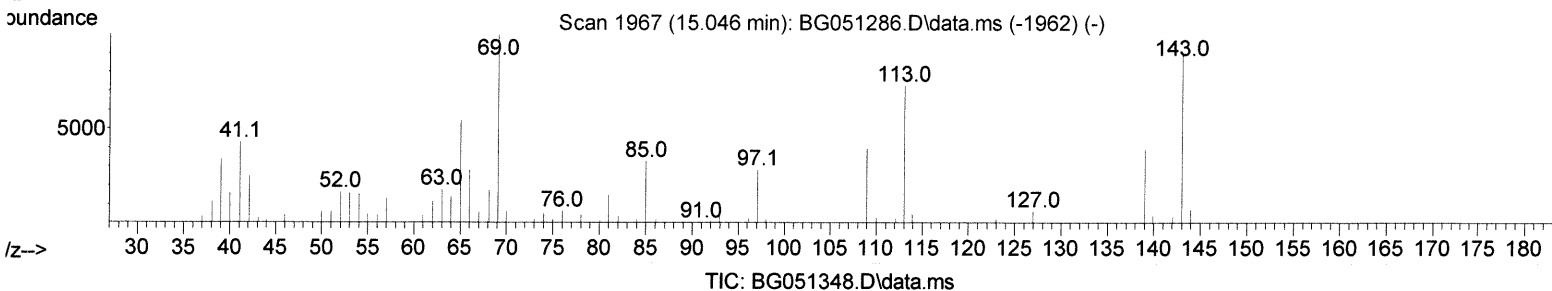
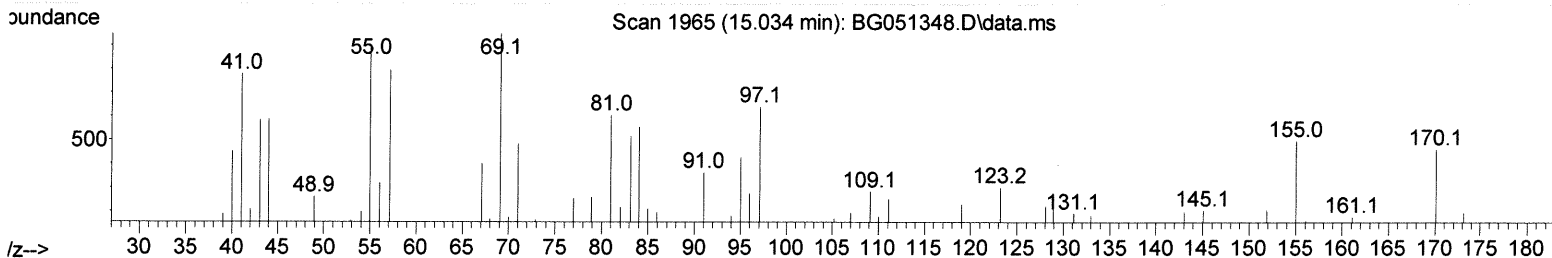
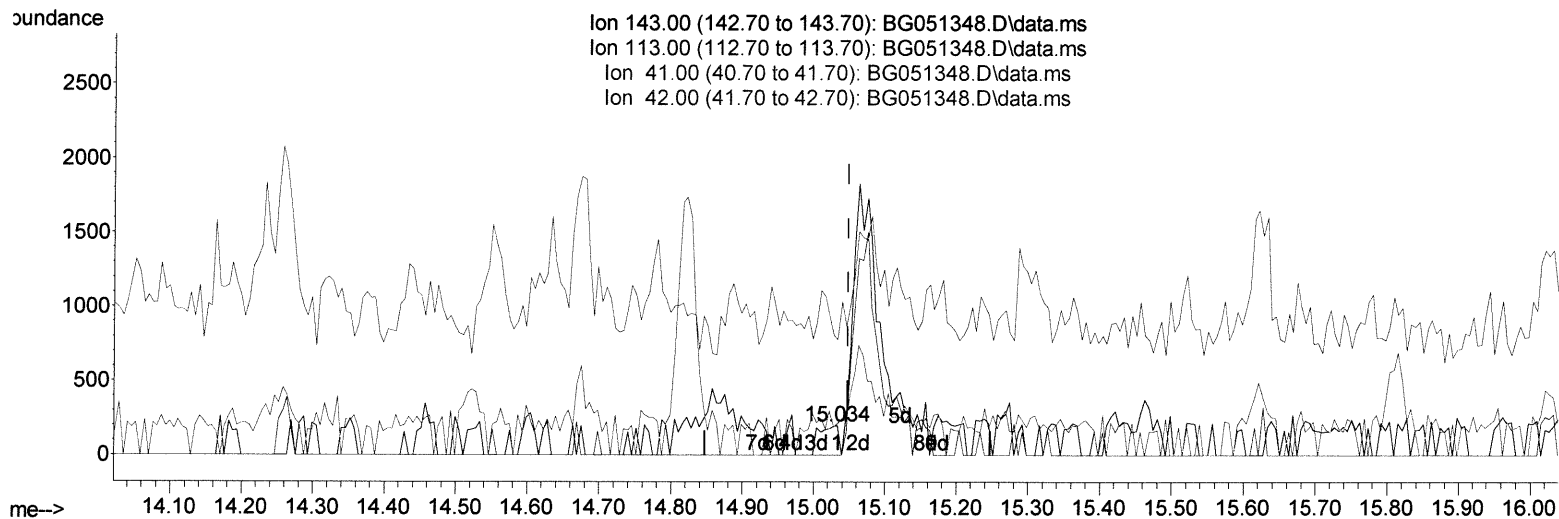
Data Path : Z:\svoasrv\HPCHEM1\BNA_G\Data\BG120621\
 Data File : BG051348.D
 Acq On : 6 Dec 2021 13:22
 Operator : CG/JU
 Sample : M4833-11 5X
 Misc :
 ALS Vial : 5 Sample Multiplier: 1

Instrument :
 BNA_G
 ClientSampleId :
 ESQM9

Quant Time: Dec 06 13:58:00 2021
 Quant Method : Z:\svoasrv\HPCHEM1\BNA_G\Methods\SFAM-EPA-BG112321.M
 Quant Title : SVOA CALIBRATION
 QLast Update : Fri Dec 03 15:23:09 2021
 Response via : Initial Calibration

Manual IntegrationsAPPROVED

Reviewed By :Jagrut Upadhyay 12/06/2021
 Supervised By :mohammad ahmed 12/07/2021



(54) 4-Nitrophenol-d4 (S)

15.034min (-0.014) 0.13 ng/ul

response 136

Ion	Exp%	Act%
143.00	100.00	100.00
113.00	80.30	0.00#
41.00	44.40	398.97#
42.00	29.70	106.15#

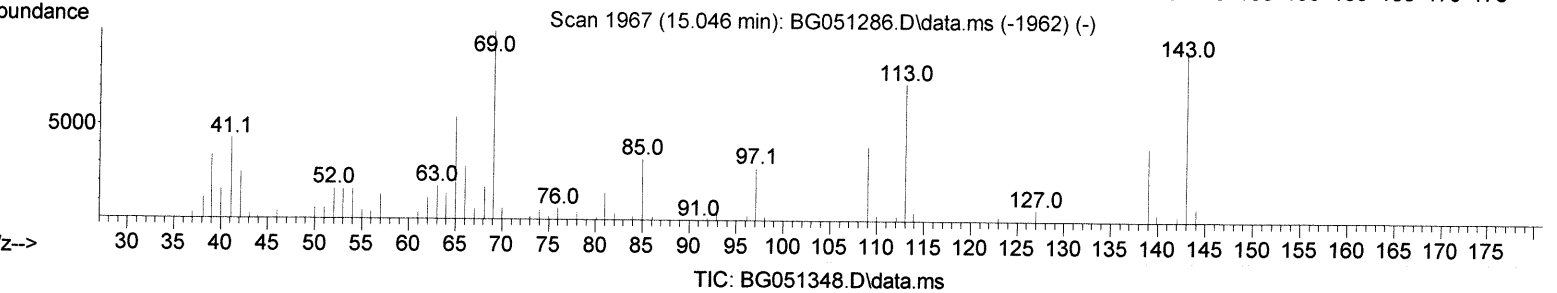
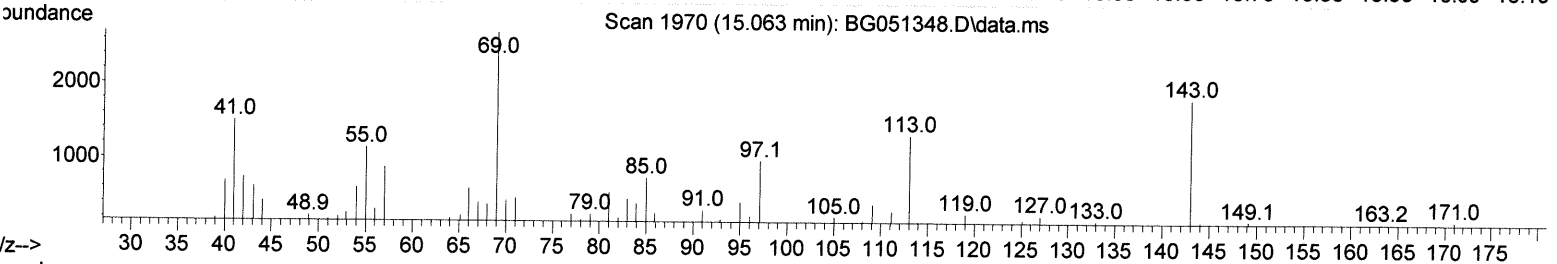
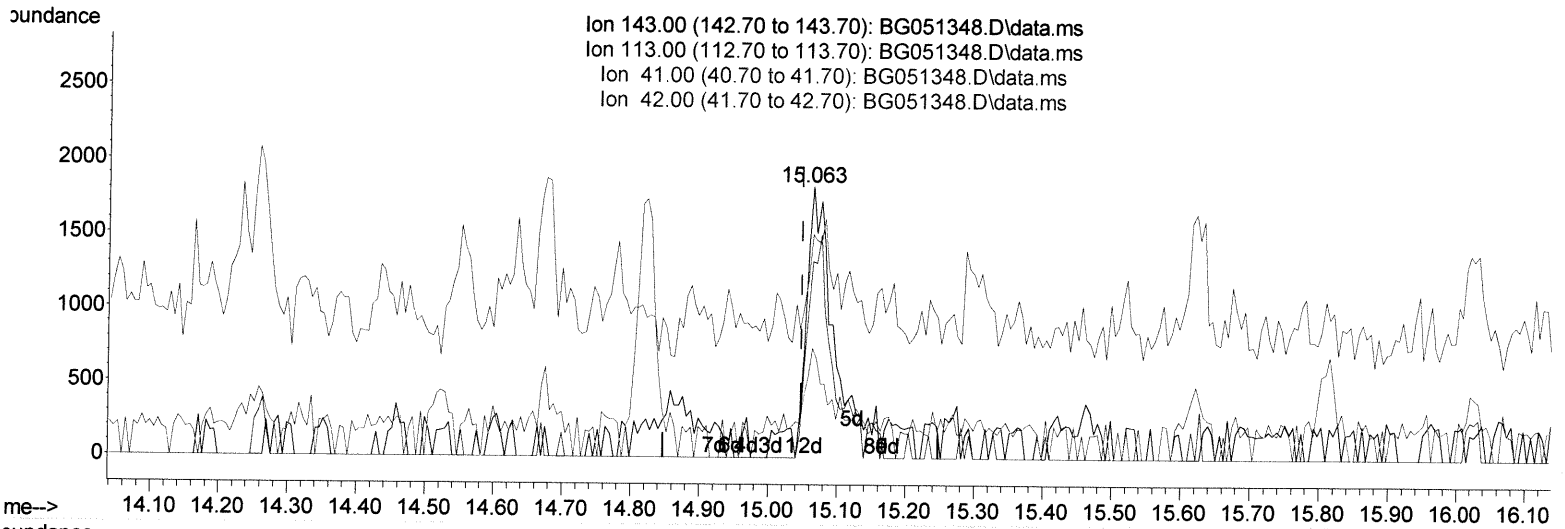
Data Path : Z:\svoasrv\HPCHEM1\BNA_G\Data\BG120621\
 Data File : BG051348.D
 Acq On : 6 Dec 2021 13:22
 Operator : CG/JU
 Sample : M4833-11 5X
 Misc :
 ALS Vial : 5 Sample Multiplier: 1

Instrument :
 BNA_G
 ClientSampleId :
 ESQM9

Manual IntegrationsAPPROVED

Reviewed By :Jagrut Upadhyay 12/06/2021
 Supervised By :mohammad ahmed 12/07/2021

Quant Time: Dec 06 13:58:00 2021
 Quant Method : Z:\svoasrv\HPCHEM1\BNA_G\Methods\SFAM-EPA-BG112321.M
 Quant Title : SVOA CALIBRATION
 QLast Update : Fri Dec 03 15:23:09 2021
 Response via : Initial Calibration



(54) 4-Nitrophenol-d4 (S)

15.063min (+ 0.015) 4.68 ng/ul m

response 4862

Ion	Exp%	Act%
143.00	100.00	100.00
113.00	80.30	72.60
41.00	44.40	82.30#
42.00	29.70	40.44#

J912/07/21

Data Path : Z:\svoasrv\HPCHEM1\BNA_G\Data\BG120621\
 Data File : BG051348.D
 Acq On : 6 Dec 2021 13:22
 Operator : CG/JU
 Sample : M4833-11 5X
 Misc :
 ALS Vial : 5 Sample Multiplier: 1

Instrument :
 BNA_G
 ClientSampleId :
 ESQM9

Manual IntegrationsAPPROVED

Reviewed By :Jagrut Upadhyay 12/06/2021
 Supervised By :mohammad ahmed 12/07/2021

Quant Time: Dec 06 13:58:00 2021
 Quant Method : Z:\svoasrv\HPCHEM1\BNA_G\Methods\SFAM-EPA-BG112321.M
 Quant Title : SVOA CALIBRATION
 Last Update : Fri Dec 03 15:23:09 2021
 Response via : Initial Calibration

Compound	R.T.	QIon	Response	Conc	Units	Dev(Min)
Internal Standards						
1) 1,4-Dichlorobenzene-d4	8.189	152	32212	20.000	ng/ul	-0.01
20) Naphthalene-d8	11.015	136	130864	20.000	ng/ul	-0.01
38) Acenaphthene-d10	14.822	164	83472	20.000	ng/ul	0.00
64) Phenanthrene-d10	17.572	188	195376	20.000	ng/ul	0.00
79) Chrysene-d12	21.873	240	181931	20.000	ng/ul	0.00
88) Perylene-d12	25.269	264	181807	20.000	ng/ul	-0.01
System Monitoring Compounds						
3) 1,4-Dioxane-d8	3.535	96	566	0.611	ng/uL	0.00
4) Pyridine-d5	3.976	84	6097	2.242	ng/ul	0.00
7) Phenol-d5	7.354	99	12488	3.923	ng/ul	0.00
9) Bis-(2-Chloroethyl)eth...	7.507	67	8408	4.205	ng/ul	0.00
11) 2-Chlorophenol-d4	7.724	132	9578	4.178	ng/ul	0.00
15) 4-Methylphenol-d8	8.905	113	9836	3.829	ng/ul	0.00
21) Nitrobenzene-d5	9.370	128	5220	4.725	ng/ul	0.00
24) 2-Nitrophenol-d4	10.098	143	5590	4.486	ng/ul	0.00
28) 2,4-Dichlorophenol-d3	10.650	165	9188	4.346	ng/ul	0.00
31) 4-Chloroaniline-d4	11.167	131	4859	1.571	ng/ul	0.00
46) Dimethylphthalate-d6	14.217	166	29876	4.652	ng/ul	0.00
49) Acenaphthylene-d8	14.522	160	40341	4.981	ng/ul	0.00
54) 4-Nitrophenol-d4	15.063	143	4862m	4.677	ng/ul	0.01
60) Fluorene-d10	15.809	176	29575	5.114	ng/ul	-0.01
65) 4,6-Dinitro-2-methylph...	15.956	200	3145	2.609	ng/ul	0.00
73) Anthracene-d10	17.672	188	50119	5.364	ng/ul	0.00
81) Pyrene-d10	19.951	212	55044	5.000	ng/ul	0.00
92) Benzo(a)pyrene-d12	25.028	264	49051	5.052	ng/ul	-0.01

5/11/21

Target Compounds Qvalue

(#) = qualifier out of range (m) = manual integration (+) = signals summed