

Data Path : Z:\svoasrv\HPCHEM1\BNA_G\Data\BG120621\
Data File : BG051368.D
Acq On : 7 Dec 2021 3:19
Operator : CG/JU
Sample : M4942-05
Misc :
ALS Vial : 25 Sample Multiplier: 1

Instrument :

BNA_G

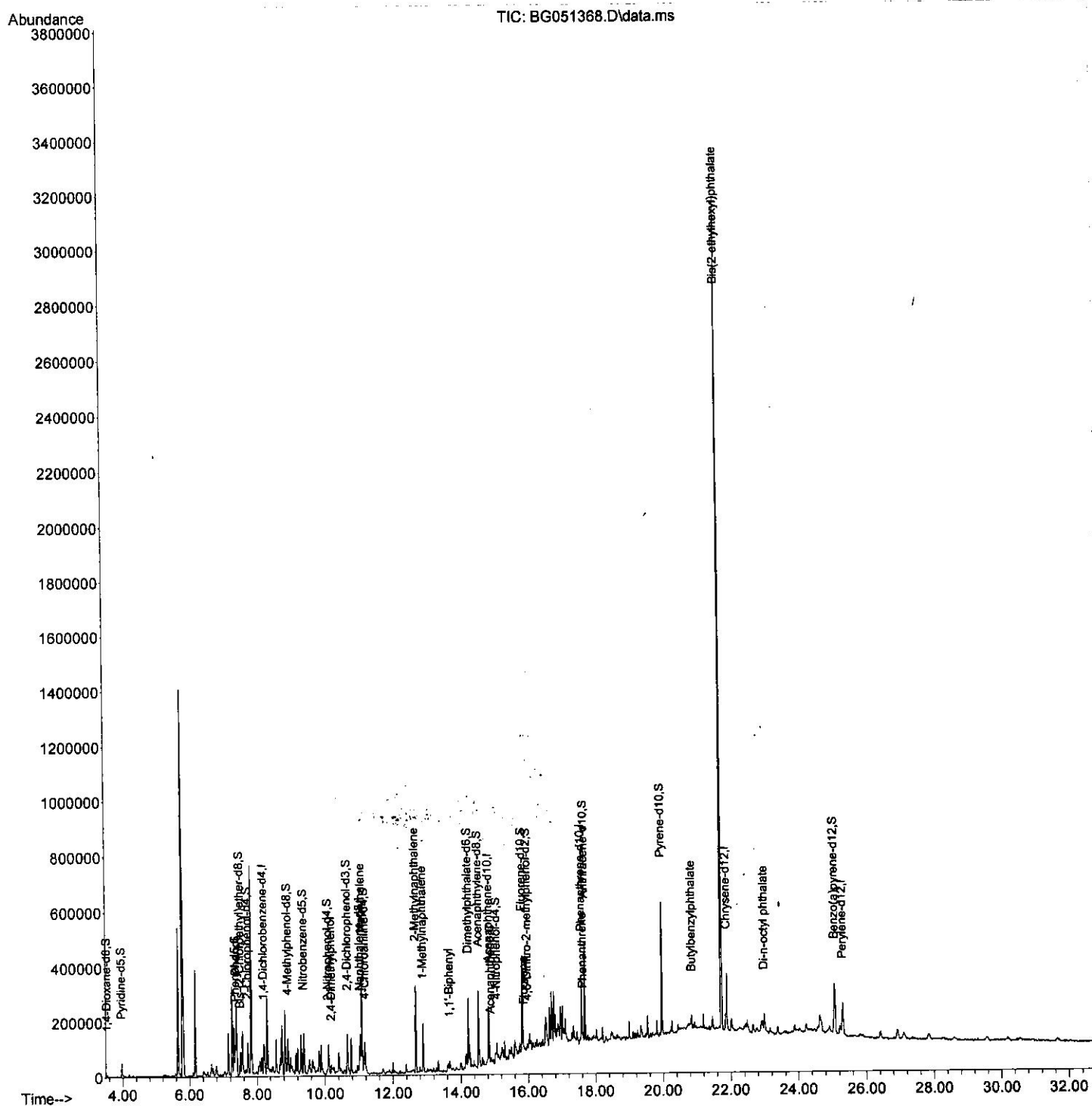
Client Sampled :

BGKQ5

Quant Time: Dec 07 03:53:46 2021
Quant Method : Z:\svoasrv\HPCHEM1\BNA_G\Methods\SFAM-EPA-BG112321.M
Quant Title : SVOA CALIBRATION
QLast Update : Fri Dec 03 15:23:09 2021
Response via : Initial Calibration

Manual Integrations APPROVED

Reviewed By : Jagrut Upadhyay 12/07/2021
Supervised By : mohammad ahmed 12/07/2021



Quantitation Report (Qedit)

Data Path : Z:\svoasrv\HPCHEM1\BNA_G\Data\BG120621\
 Data File : BG051368.D
 Acq On : 7 Dec 2021 3:19
 Operator : CG/JU
 Sample : M4942-05
 Misc :
 ALS Vial : 25 Sample Multiplier: 1

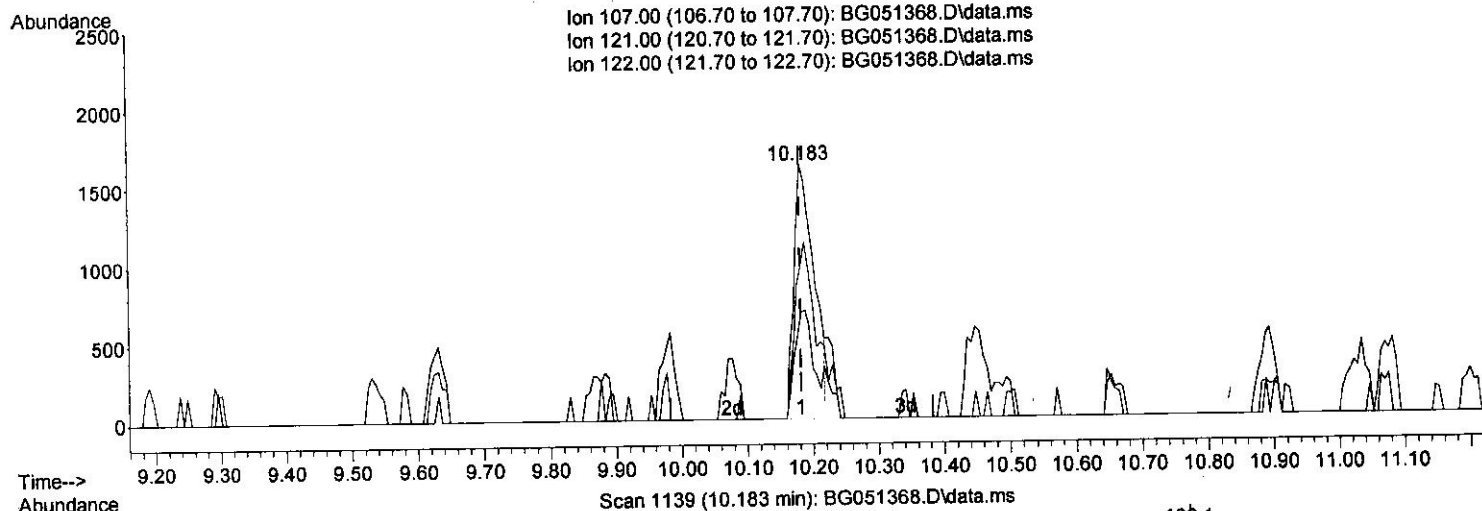
Instrument :
 BNA_G
 Client Sampled :
 BGKQ5

Quant Time: Dec 07 03:53:46 2021
 Quant Method : Z:\svoasrv\HPCHEM1\BNA_G\Methods\SFAM-EPA-BG112321.M
 Quant Title : SVOA CALIBRATION
 QLast Update : Fri Dec 03 15:23:09 2021
 Response via : Initial Calibration

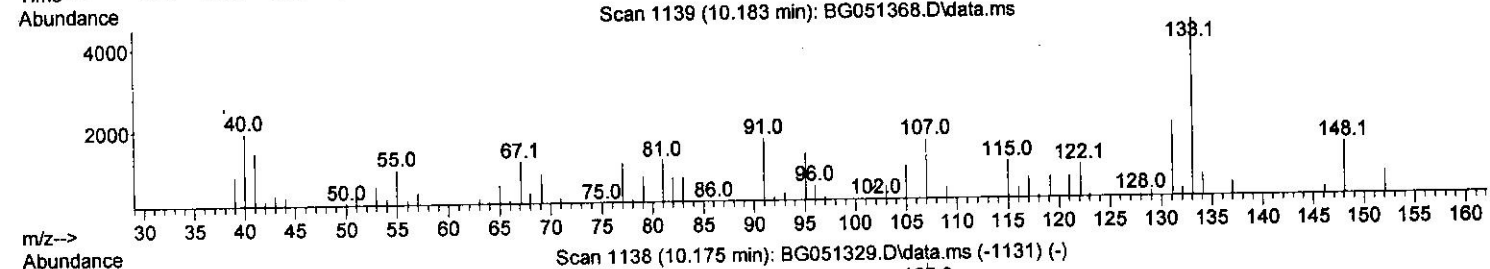
Manual Integrations APPROVED

Reviewed By : Jagrut Upadhyay 12/07/2021
 Supervised By : mohammad ahmed 12/07/2021

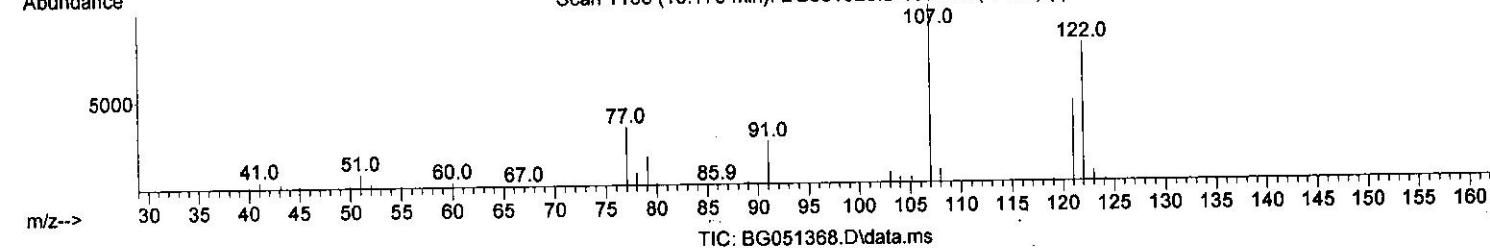
Ion 107.00 (106.70 to 107.70): BG051368.D\data.ms
 Ion 121.00 (120.70 to 121.70): BG051368.D\data.ms
 Ion 122.00 (121.70 to 122.70): BG051368.D\data.ms



Scan 1139 (10.183 min): BG051368.D\data.ms



Scan 1138 (10.175 min): BG051329.D\data.ms (-1131) (-)



TIC: BG051368.D\data.ms

(26) 2,4-Dimethylphenol

10.183min (-0.000) 1.50 ng/ul

response 3487

Ion	Exp%	Act%
107.00	100.00	100.00
121.00	49.10	42.14
122.00	79.60	60.64#
0.00	0.00	0.00

Quantitation Report (Qedit)

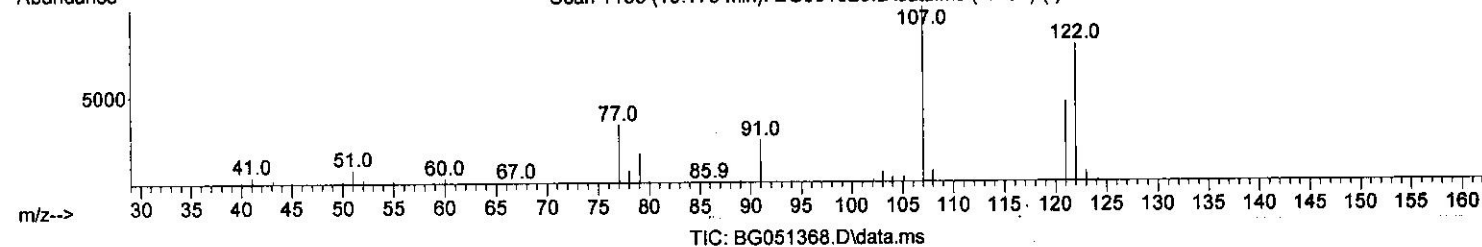
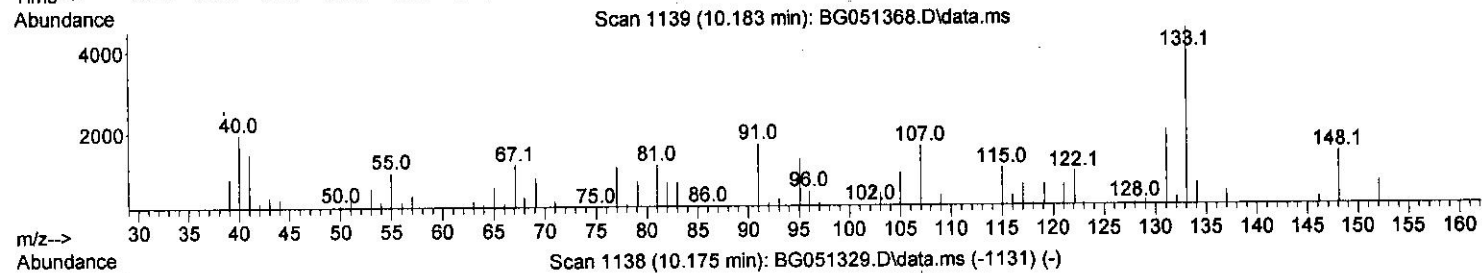
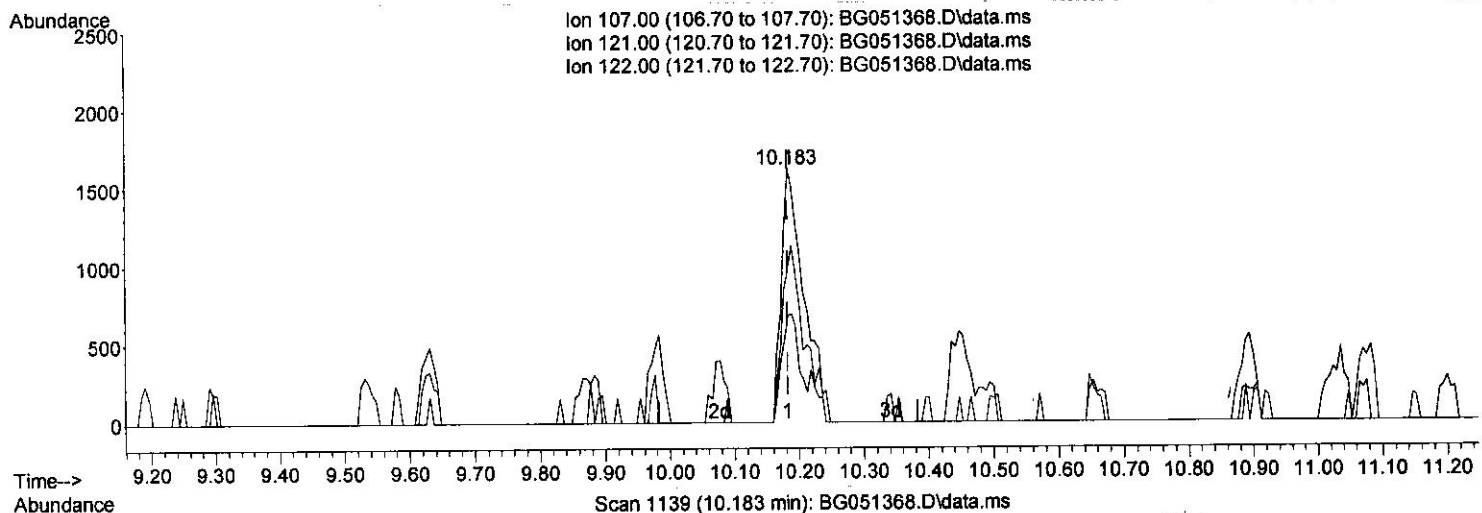
Data Path : Z:\svoasrv\HPCHEM1\BNA_G\Data\BG120621\
 Data File : BG051368.D
 Acq On : 7 Dec 2021 3:19
 Operator : CG/JU
 Sample : M4942-05
 Misc :
 ALS Vial : 25 Sample Multiplier: 1

Instrument :
 BNA_G
 Client Sampled :
 BGKQ5

Quant Time: Dec 07 03:53:46 2021
 Quant Method : Z:\svoasrv\HPCHEM1\BNA_G\Methods\SFAM-EPA-BG112321.M
 Quant Title : SVOA CALIBRATION
 QLast Update : Fri Dec 03 15:23:09 2021
 Response via : Initial Calibration

Manual Integrations APPROVED

Reviewed By : Jagrut Upadhyay 12/07/2021
 Supervised By : mohammad ahmed 12/07/2021



(26) 2,4-Dimethylphenol

10.183min (-0.000) 1.71 ng/ul m

response 3967

Ion	Exp%	Act%
107.00	100.00	100.00
121.00	49.10	42.14
122.00	79.60	60.64#
0.00	0.00	0.00

Quantitation Report (Qedit)

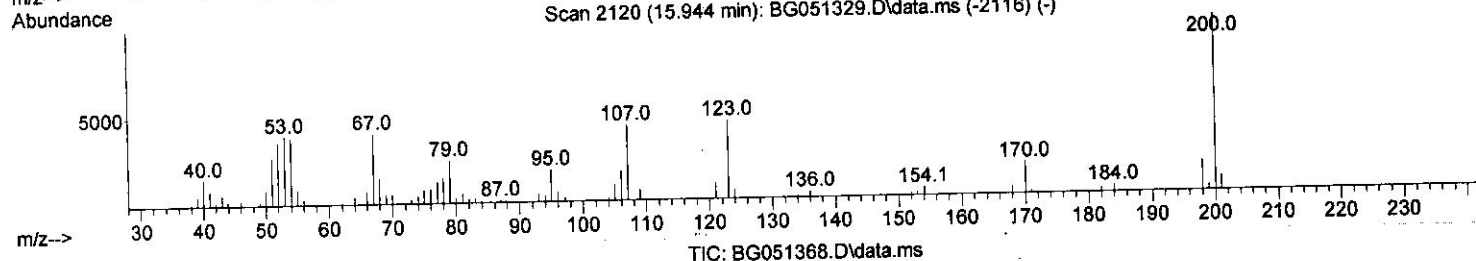
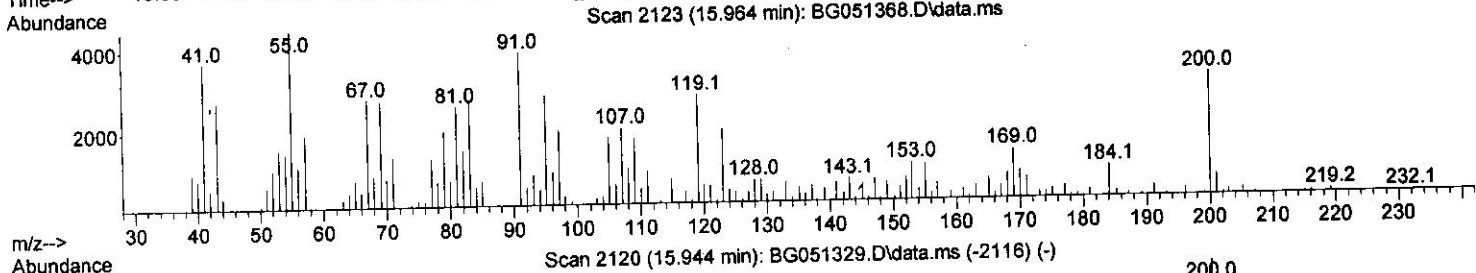
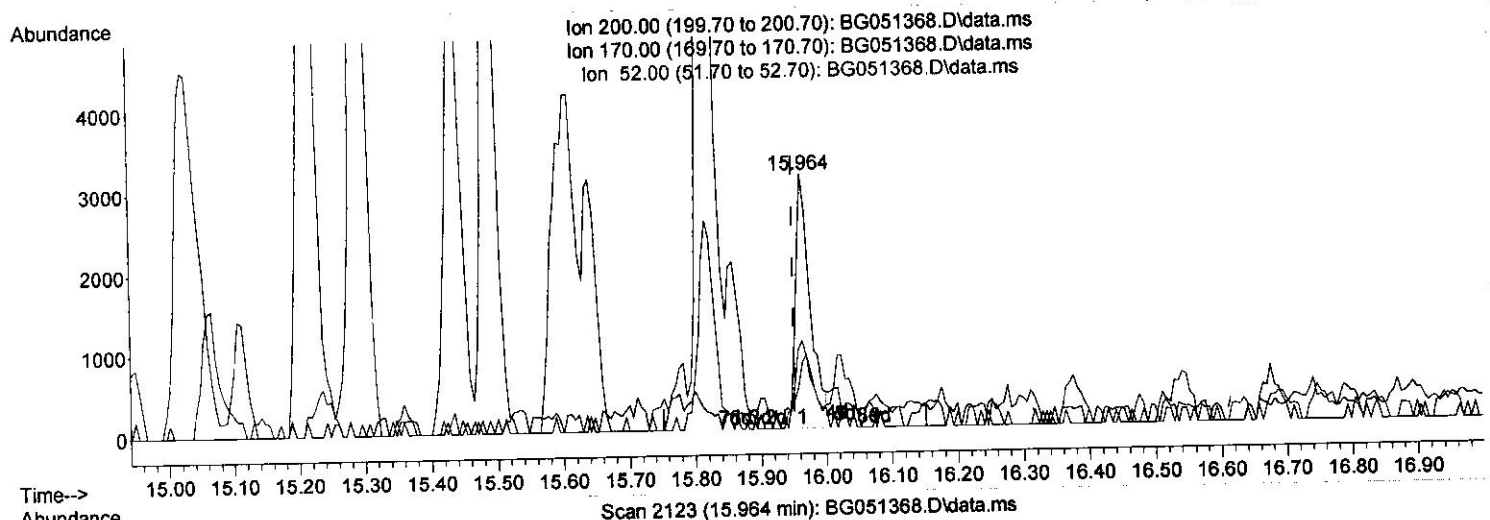
Data Path : Z:\svoasrv\HPCHEM1\BNA_G\Data\BG120621\
 Data File : BG051368.D
 Acq On : 7 Dec 2021 3:19
 Operator : CG/JU
 Sample : M4942-05
 Misc :
 ALS Vial : 25 Sample Multiplier: 1

Instrument :
 BNA_G
 Client Sampled :
 BGKQ5

Manual Integrations APPROVED

Quant Time: Dec 07 03:53:46 2021
 Quant Method : Z:\svoasrv\HPCHEM1\BNA_G\Methods\SFAM-EPA-BG112321.M
 Quant Title : SVOA CALIBRATION
 QLast Update : Fri Dec 03 15:23:09 2021
 Response via : Initial Calibration

Reviewed By : Jagrut Upadhyay 12/07/2021
 Supervised By : mohammad ahmed 12/07/2021



(65) 4,6-Dinitro-2-methylphenol-d2 (8)

15.964min (+ 0.011) 5.46 ng/ul

response 4892

Ion	Exp%	Act%
200.00	100.00	100.00
170.00	19.80	26.11#
52.00	47.40	34.56#
0.00	0.00	0.00

Quantitation Report (Qedit)

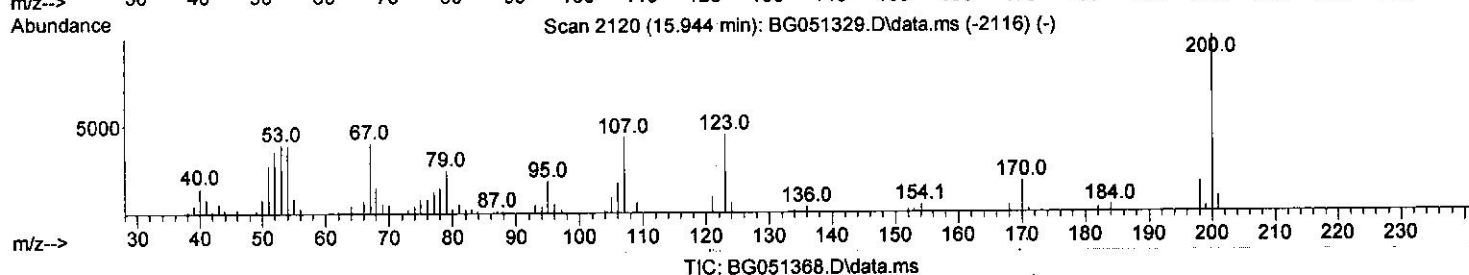
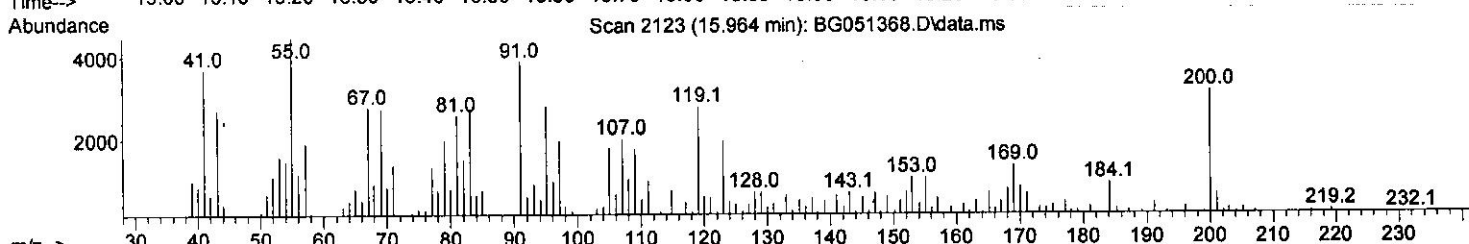
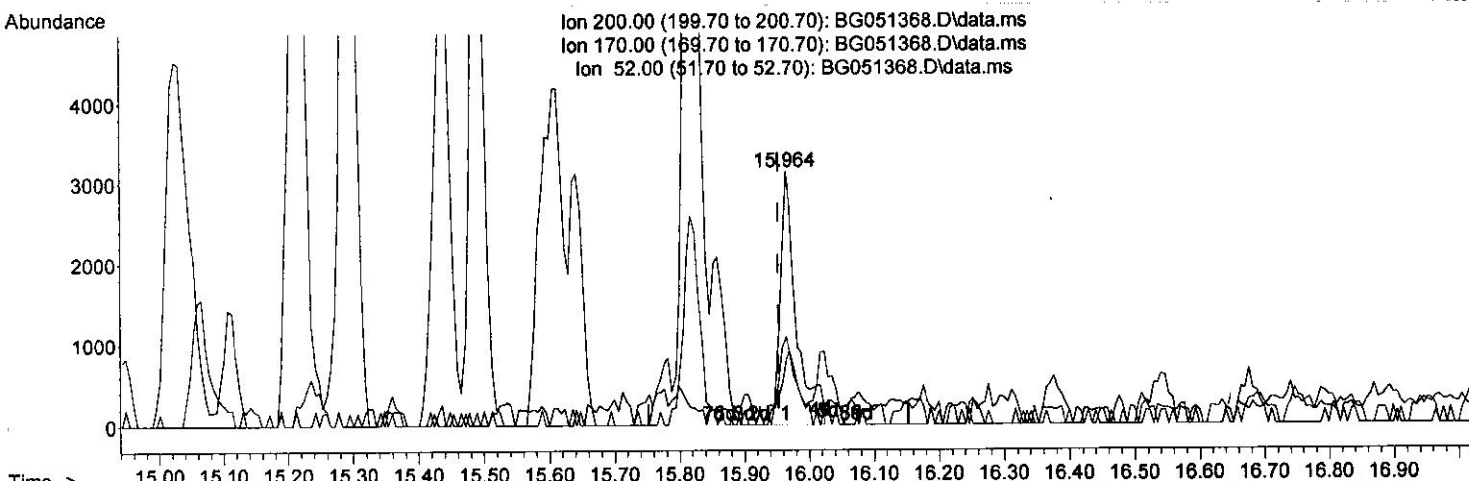
Data Path : Z:\svoasrv\HPCHEM1\BNA_G\Data\BG120621\
 Data File : BG051368.D
 Acq On : 7 Dec 2021 3:19
 Operator : CG/JU
 Sample : M4942-05
 Misc :
 ALS Vial : 25 Sample Multiplier: 1

Instrument :
 BNA_G
 Client Sampled :
 BGKQ5

Quant Time: Dec 07 03:53:46 2021
 Quant Method : Z:\svoasrv\HPCHEM1\BNA_G\Methods\SFAM-EPA-BG112321.M
 Quant Title : SVOA CALIBRATION
 QLast Update : Fri Dec 03 15:23:09 2021
 Response via : Initial Calibration

Manual Integrations APPROVED

Reviewed By : Jagrut Upadhyay 12/07/2021
 Supervised By : mohammad ahmed 12/07/2021



(65) 4,6-Dinitro-2-methylphenol-d2 (S)

15.964min (+ 0.011) 6.10 ng/ul m

response 5463

Ion	Exp%	Act%
200.00	100.00	100.00
170.00	19.80	26.11#
52.00	47.40	34.56#
0.00	0.00	0.00

Quantitation Report (LSC Reviewed)

Data Path : Z:\svoasrv\HPCHEM1\BNA_G\Data\BG120621\
 Data File : BG051368.D
 Acq On : 7 Dec 2021 3:19
 Operator : CG/JU
 Sample : M4942-05
 Misc :
 ALS Vial : 25 Sample Multiplier: 1

Instrument :
 BNA_G
 Client Sampled :
 BGKQ5

Manual Integrations APPROVED

Reviewed By : Jagrut Upadhyay 12/07/2021
 Supervised By : mohammad ahmed 12/07/2021

Quant Time: Dec 07 03:53:46 2021
 Quant Method : Z:\svoasrv\HPCHEM1\BNA_G\Methods\SFAM-EPA-BG112321.M
 Quant Title : SVOA CALIBRATION
 QLast Update : Fri Dec 03 15:23:09 2021
 Response via : Initial Calibration

Compound	R.T.	QIon	Response	Conc	Units	Dev(Min)
Internal Standards						
1) 1,4-Dichlorobenzene-d4	8.197	152	26127	20.000	ng/ul	0.00
20) Naphthalene-d8	11.023	136	115036	20.000	ng/ul	0.00
38) Acenaphthene-d10	14.830	164	75850	20.000	ng/ul	0.00
64) Phenanthrene-d10	17.580	188	145229	20.000	ng/ul	0.00
79) Chrysene-d12	21.881	240	126733	20.000	ng/ul	0.00
88) Perylene-d12	25.294	264	129028	20.000	ng/ul	0.01
System Monitoring Compounds						
3) 1,4-Dioxane-d8	3.532	96	3168	4.214	ng/uL	-0.01
4) Pyridine-d5	3.966	84	33371	15.126	ng/ul	-0.01
7) Phenol-d5	7.357	99	63085	24.430	ng/ul	0.00
9) Bis-(2-Chloroethyl)eth...	7.503	67	42615	26.277	ng/ul	-0.01
11) 2-Chlorophenol-d4	7.727	132	49088	26.399	ng/ul	0.00
15) 4-Methylphenol-d8	8.908	113	51919	24.916	ng/ul	0.00
21) Nitrobenzene-d5	9.372	128	26930	27.732	ng/ul	0.00
24) 2-Nitrophenol-d4	10.100	143	30156	27.529	ng/ul	0.00
28) 2,4-Dichlorophenol-d3	10.653	165	49102	26.419	ng/ul	0.00
31) 4-Chloroaniline-d4	11.164	131	66427	24.427	ng/ul	0.00
46) Dimethylphthalate-d6	14.219	166	163343	27.988	ng/ul	0.00
49) Acenaphthylene-d8	14.525	160	205923	27.981	ng/ul	0.00
54) 4-Nitrophenol-d4	15.059	143	18888	19.994	ng/ul	0.01
60) Fluorene-d10	15.823	176	143947	27.390	ng/ul	0.00
65) 4,6-Dinitro-2-methylph...	15.964	200	5463m	6.096	ng/ul	0.01
73) Anthracene-d10	17.680	188	213653	30.760	ng/ul	0.00
81) Pyrene-d10	19.959	212	223887	29.196	ng/ul	0.00
92) Benzo(a)pyrene-d12	25.059	264	197363	28.641	ng/ul	0.02
Target Compounds						
8) Phenol	7.386	94	2869	1.073	ng/ul#	1
26) 2,4-Dimethylphenol	10.183	107	3967m	1.710	ng/ul	
30) Naphthalene	11.076	128	293910	46.955	ng/ul	98
36) 2-Methylnaphthalene	12.668	142	147773	34.709	ng/ul	97
37) 1-Methylnaphthalene	12.885	142	83427	19.046	ng/ul	99
43) 1,1'-Biphenyl	13.661	154	17244	3.044	ng/ul	93
52) Acenaphthene	14.889	153	6184	1.290	ng/ul	95
61) Fluorene	15.876	166	6025	1.088	ng/ul#	89
72) Phenanthrene	17.621	178	19323	2.410	ng/ul#	95
83) Butylbenzylphthalate	20.847	149	15417	4.025	ng/ul	98
86) Bis(2-ethylhexyl)phtha...	21.722	149	1189560	215.828	ng/ul#	95
89) Di-n-octyl phthalate	22.985	149	81759	8.746	ng/ul	100

(#) = qualifier out of range (m) = manual integration (+) = signals summed