

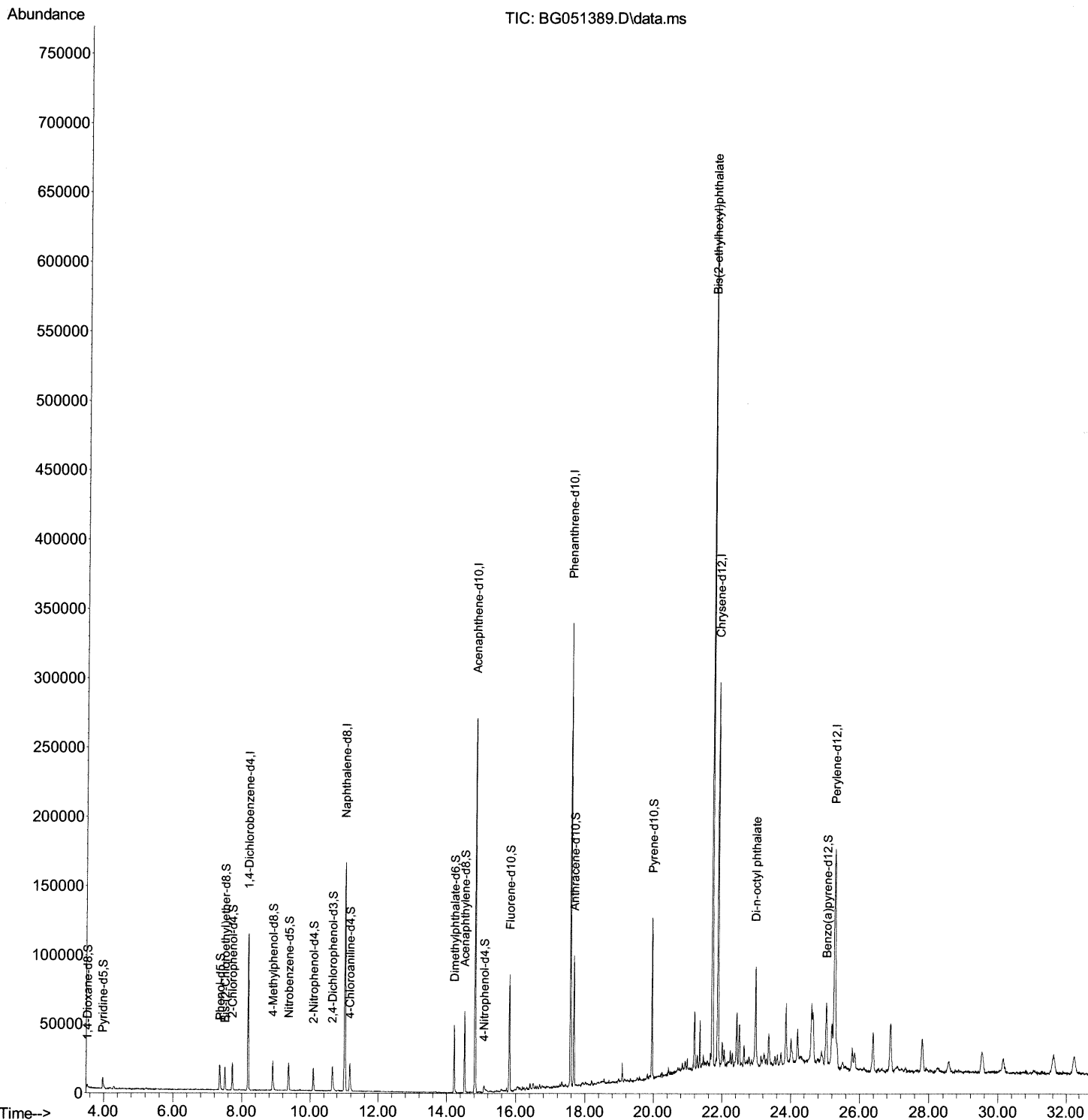
Data Path : Z:\svoasrv\HPCHEM1\BNA\_G\Data\BG120621\  
Data File : BG051389.D  
Acq On : 7 Dec 2021 19:21  
Operator : CG/JU  
Sample : M4868-06MEDL 5X  
Misc :  
ALS Vial : 47 Sample Multiplier: 1

Instrument :  
BNA\_G  
ClientSampleId :  
BGKP1MEDL

Manual IntegrationsAPPROVED

Quant Time: Dec 08 02:23:02 2021  
Quant Method : Z:\svoasrv\HPCHEM1\BNA\_G\Methods\SFAM-EPA-BG112321.M  
Quant Title : SVOA CALIBRATION  
QLast Update : Fri Dec 03 15:23:09 2021  
Response via : Initial Calibration

Reviewed By :Jagrut Upadhyay 12/08/2021  
Supervised By :mohammad ahmed 12/15/2021



## Quantitation Report (Qedit)

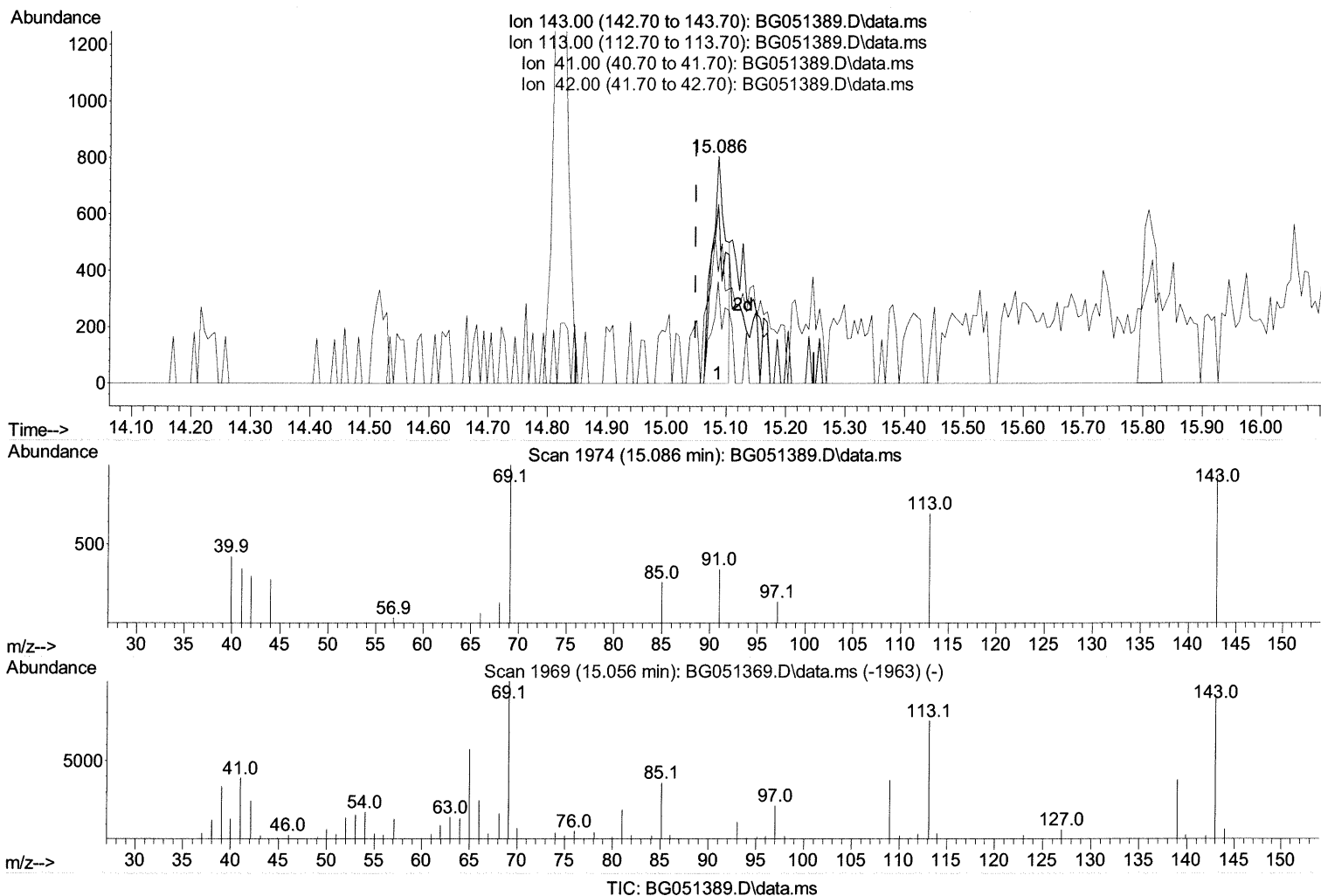
Data Path : Z:\svoasrv\HPCHEM1\BNA\_G\Data\BG120621\  
Data File : BG051389.D  
Acq On : 7 Dec 2021 19:21  
Operator : CG/JU  
Sample : M4868-06MEDL 5X  
Misc :  
ALS Vial : 47 Sample Multiplier: 1

Instrument :  
BNA\_G  
ClientSampleId :  
BGKP1MEDL

Manual IntegrationsAPPROVED

Quant Time: Dec 08 08:31:51 2021  
Quant Method : Z:\svoasrv\HPCHEM1\BNA\_G\Methods\SFAM-EPA-BG112321.M  
Quant Title : SVOA CALIBRATION  
QLast Update : Fri Dec 03 15:23:09 2021  
Response via : Initial Calibration

Reviewed By :Jagrut Upadhyay 12/08/2021  
Supervised By :mohammad ahmed 12/15/2021



(54) 4-Nitrophenol-d4 (S)

15.086min (+ 0.038) 1.09 ng/ul

response 1279

Ion	Exp%	Act%
143.00	100.00	100.00
113.00	80.30	78.88
41.00	44.40	49.07
42.00	29.70	44.84#

# Quantitation Report (Qedit)

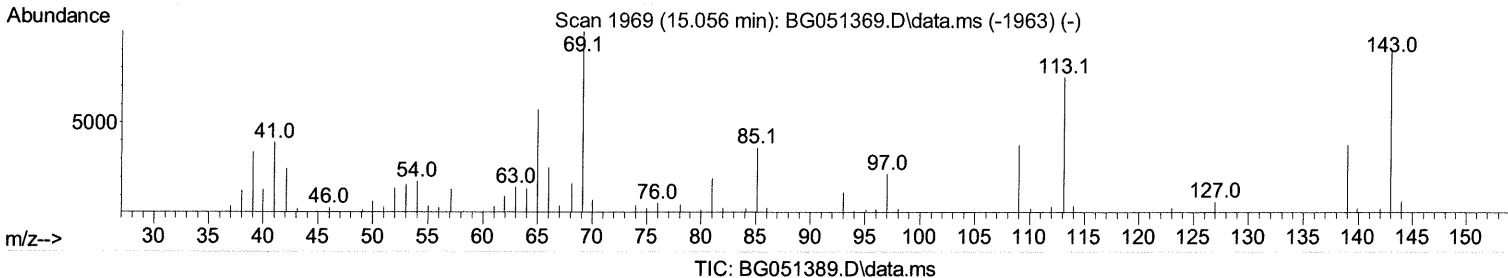
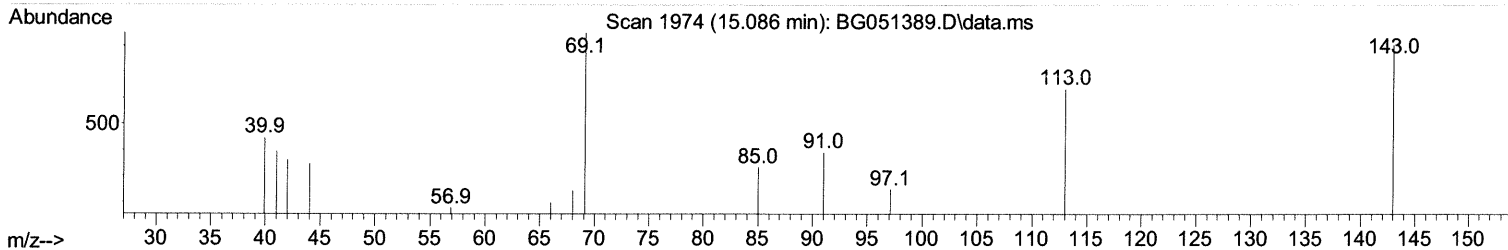
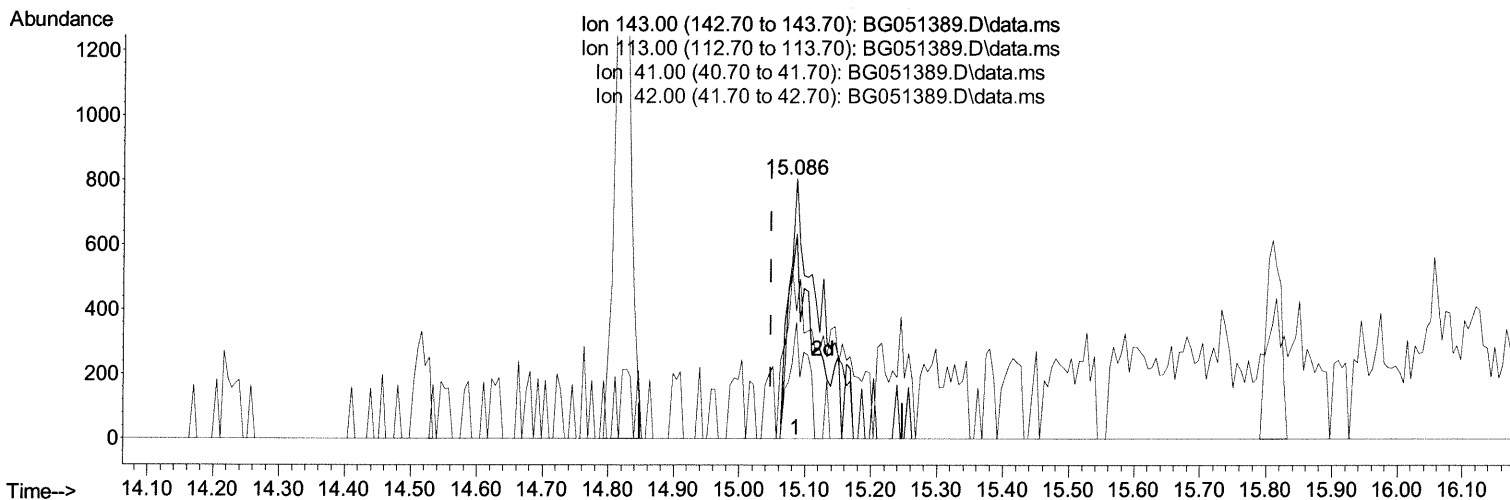
Data Path : Z:\svoasrv\HPCHEM1\BNA\_G\Data\BG120621\  
 Data File : BG051389.D  
 Acq On : 7 Dec 2021 19:21  
 Operator : CG/JU  
 Sample : M4868-06MEDL 5X  
 Misc :  
 ALS Vial : 47 Sample Multiplier: 1

Instrument :  
 BNA\_G  
 ClientSampleId :  
 BGKP1MEDL

Manual IntegrationsAPPROVED

Quant Time: Dec 08 02:23:02 2021  
 Quant Method : Z:\svoasrv\HPCHEM1\BNA\_G\Methods\SFAM-EPA-BG112321.M  
 Quant Title : SVOA CALIBRATION  
 Qlast Update : Fri Dec 03 15:23:09 2021  
 Response via : Initial Calibration

Reviewed By :Jagrut Upadhyay 12/08/2021  
 Supervised By :mohammad ahmed 12/15/2021



(54) 4-Nitrophenol-d4 (S)

15.086min (+ 0.038) 2.12 ng/ul m 12/11/2021

response 2502

Ion	Exp%	Act%
143.00	100.00	100.00
113.00	80.30	78.88
41.00	44.40	49.07
42.00	29.70	44.84#

Data Path : Z:\svoasrv\HPCHEM1\BNA\_G\Data\BG120621\  
 Data File : BG051389.D  
 Acq On : 7 Dec 2021 19:21  
 Operator : CG/JU  
 Sample : M4868-06MEDL 5X  
 Misc :  
 ALS Vial : 47 Sample Multiplier: 1

Instrument :  
 BNA\_G  
 ClientSampleId :  
 BGKP1MEDL

## Manual IntegrationsAPPROVED

Reviewed By :Jagrut Upadhyay 12/08/2021  
 Supervised By :mohammad ahmed 12/15/2021

Quant Time: Dec 08 02:23:02 2021  
 Quant Method : Z:\svoasrv\HPCHEM1\BNA\_G\Methods\SFAM-EPA-BG112321.M  
 Quant Title : SVOA CALIBRATION  
 QLast Update : Fri Dec 03 15:23:09 2021  
 Response via : Initial Calibration

Compound	R.T.	QIon	Response	Conc	Units	Dev(Min)
Internal Standards						
1) 1,4-Dichlorobenzene-d4	8.188	152	31319	20.000	ng/ul	-0.01
20) Naphthalene-d8	11.014	136	139574	20.000	ng/ul	-0.01
38) Acenaphthene-d10	14.822	164	94536	20.000	ng/ul	0.00
64) Phenanthrene-d10	17.571	188	205113	20.000	ng/ul	0.00
79) Chrysene-d12	21.872	240	170749	20.000	ng/ul	0.00
88) Perylene-d12	25.268	264	169908	20.000	ng/ul	-0.01
System Monitoring Compounds						
3) 1,4-Dioxane-d8	3.529	96	1119	1.242	ng/ul	-0.02
4) Pyridine-d5	3.970	84	6003	2.270	ng/ul	0.00
7) Phenol-d5	7.354	99	13344	4.311	ng/ul	0.00
9) Bis-(2-Chloroethyl)eth...	7.507	67	9173	4.719	ng/ul	0.00
11) 2-Chlorophenol-d4	7.724	132	10174	4.564	ng/ul	0.00
15) 4-Methylphenol-d8	8.911	113	10777	4.314	ng/ul	0.00
21) Nitrobenzene-d5	9.369	128	5641	4.788	ng/ul	0.00
24) 2-Nitrophenol-d4	10.098	143	5831	4.387	ng/ul	0.00
28) 2,4-Dichlorophenol-d3	10.650	165	9807	4.349	ng/ul	0.00
31) 4-Chloroaniline-d4	11.161	131	13895	4.211	ng/ul	0.00
46) Dimethylphthalate-d6	14.216	166	35192	4.838	ng/ul	0.00
49) Acenaphthylene-d8	14.516	160	46735	5.095	ng/ul	-0.01
54) 4-Nitrophenol-d4	15.086	143	2502m >	2.125	ng/ul >	0.04 12/16/21JU
60) Fluorene-d10	15.815	176	34316	5.239	ng/ul	0.00
65) 4,6-Dinitro-2-methylph...	0.000	200	0d	0.000	ng/ul	
73) Anthracene-d10	17.671	188	56016	5.710	ng/ul	0.00
81) Pyrene-d10	19.951	212	61657	5.968	ng/ul	0.00
92) Benzo(a)pyrene-d12	25.033	264	49229	5.425	ng/ul	0.00
Target Compounds						
86) Bis(2-ethylhexyl)phtha...	21.708	149	287764	38.752	ng/ul	99
89) Di-n-octyl phthalate	22.977	149	77014	6.257	ng/ul	100

(#) = qualifier out of range (m) = manual integration (+) = signals summed