

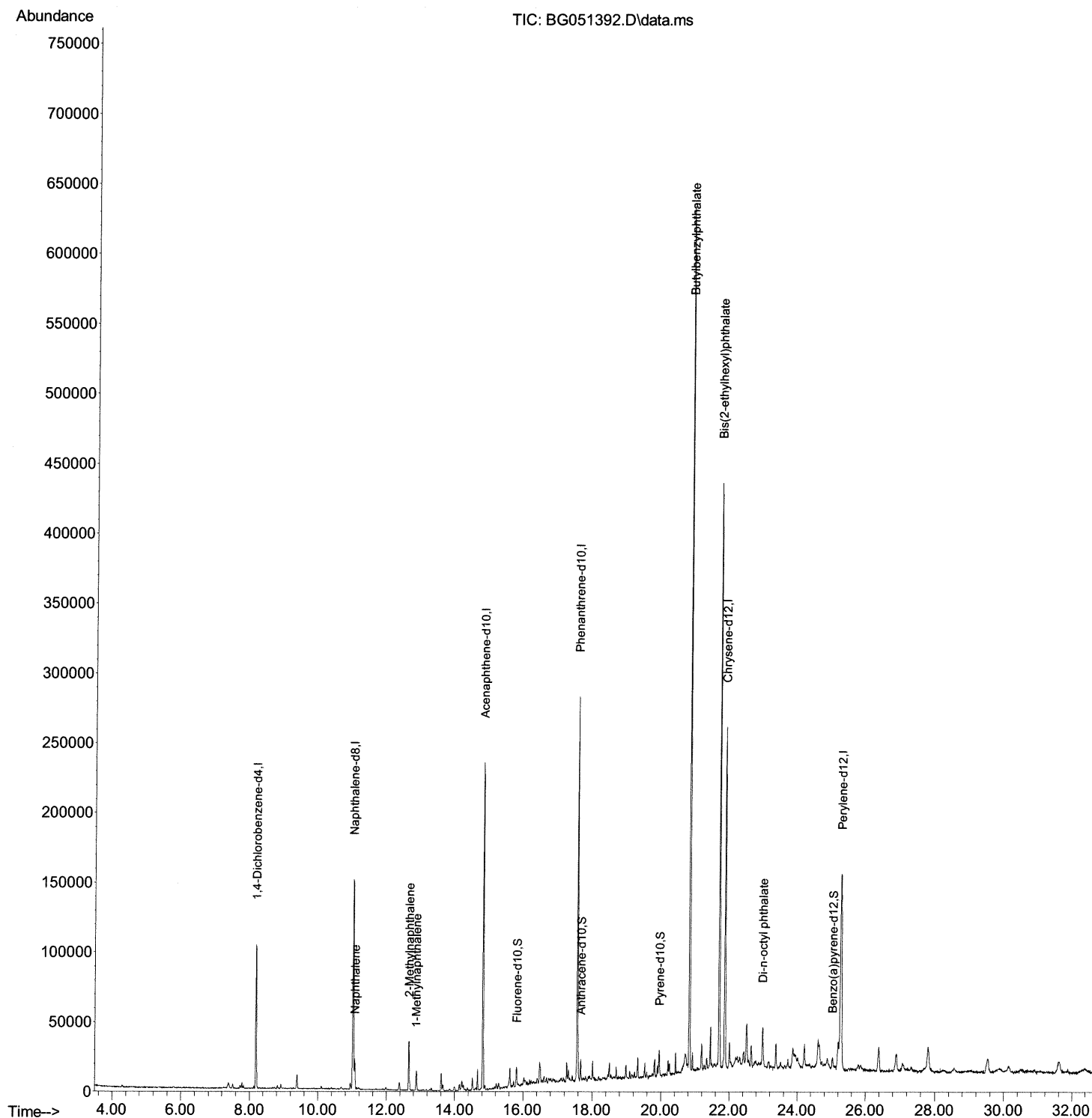
Data Path : Z:\svoasrv\HPCHEM1\BNA\_G\Data\BG120621\  
Data File : BG051392.D  
Acq On : 7 Dec 2021 21:23  
Operator : CG/JU  
Sample : M4868-11MEDL2 25X  
Misc :  
ALS Vial : 50 Sample Multiplier: 1

Instrument :  
BNA\_G  
ClientSampleId :  
BGKP6MEDL2

Manual IntegrationsAPPROVED

Quant Time: Dec 08 02:23:42 2021  
Quant Method : Z:\svoasrv\HPCHEM1\BNA\_G\Methods\SFAM-EPA-BG112321.M  
Quant Title : SVOA CALIBRATION  
QLast Update : Fri Dec 03 15:23:09 2021  
Response via : Initial Calibration

Reviewed By :Jagrut Upadhyay 12/08/2021  
Supervised By :mohammad ahmed 12/15/2021



# Quantitation Report (Qedit)

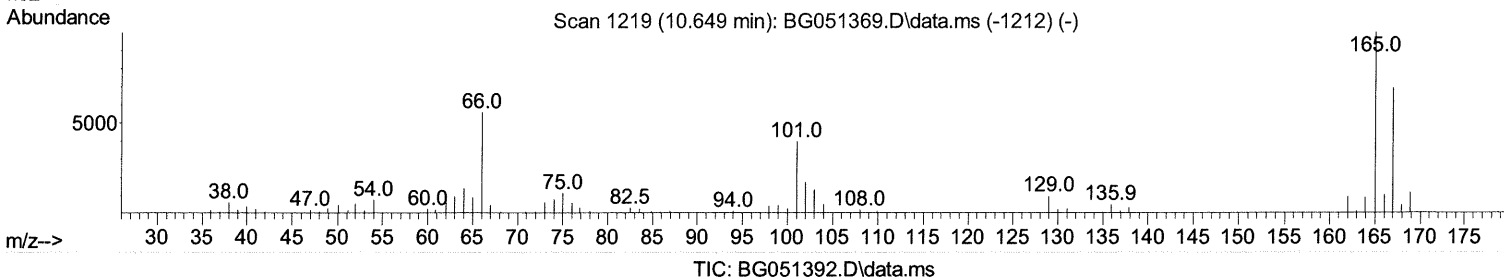
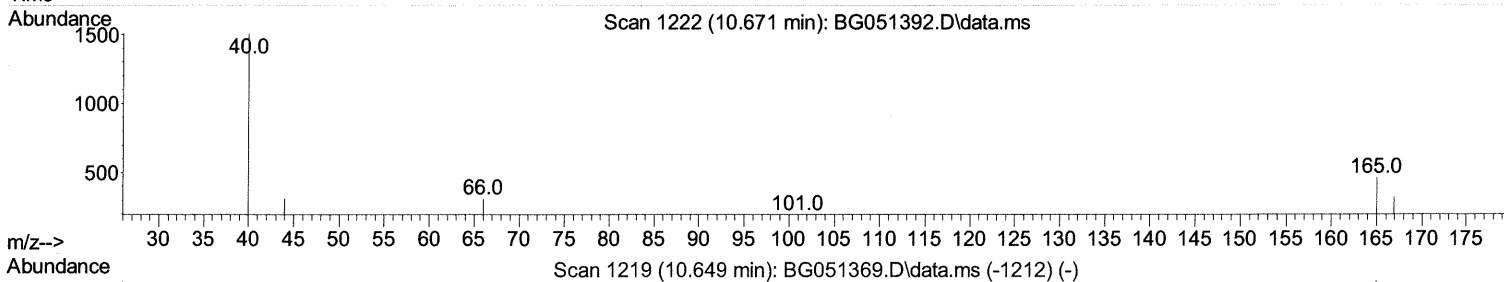
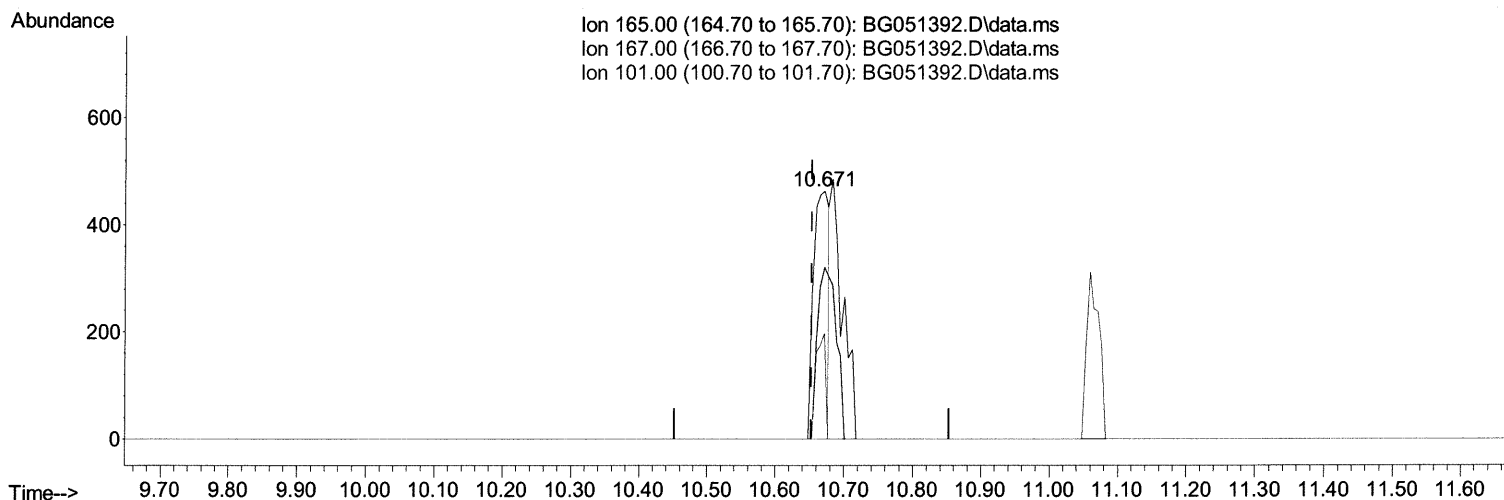
Data Path : Z:\svoasrv\HPCHEM1\BNA\_G\Data\BG120621\  
 Data File : BG051392.D  
 Acq On : 7 Dec 2021 21:23  
 Operator : CG/JU  
 Sample : M4868-11MEDL2 25X  
 Misc :  
 ALS Vial : 50 Sample Multiplier: 1

Instrument :  
 BNA\_G  
 ClientSampleId :  
 BGKP6MEDL2

Manual IntegrationsAPPROVED

Quant Time: Dec 08 08:38:38 2021  
 Quant Method : Z:\svoasrv\HPCHEM1\BNA\_G\Methods\SFAM-EPA-BG112321.M  
 Quant Title : SVOA CALIBRATION  
 QLast Update : Fri Dec 03 15:23:09 2021  
 Response via : Initial Calibration

Reviewed By :Jagrut Upadhyay 12/08/2021  
 Supervised By :mohammad ahmed 12/15/2021



(28) 2,4-Dichlorophenol-d3 (S)

10.671min (+ 0.018) 0.35 ng/ul

response 726

Ion	Exp%	Act%
165.00	100.00	100.00
167.00	64.30	69.33
101.00	34.40	42.55#
0.00	0.00	0.00

# Quantitation Report (Qedit)

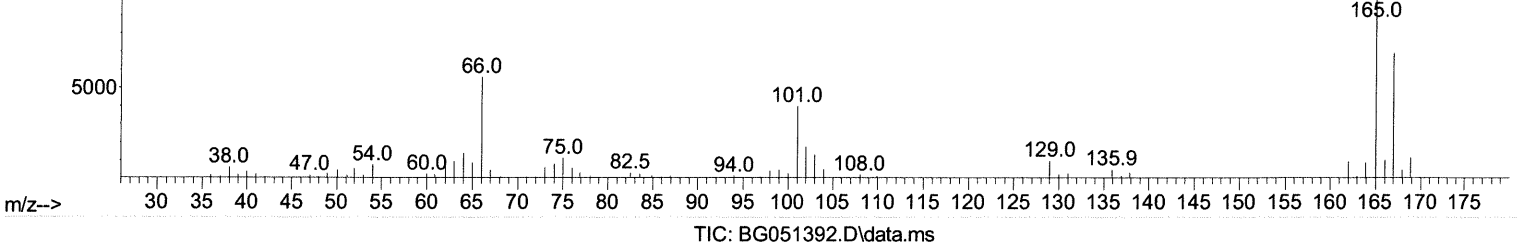
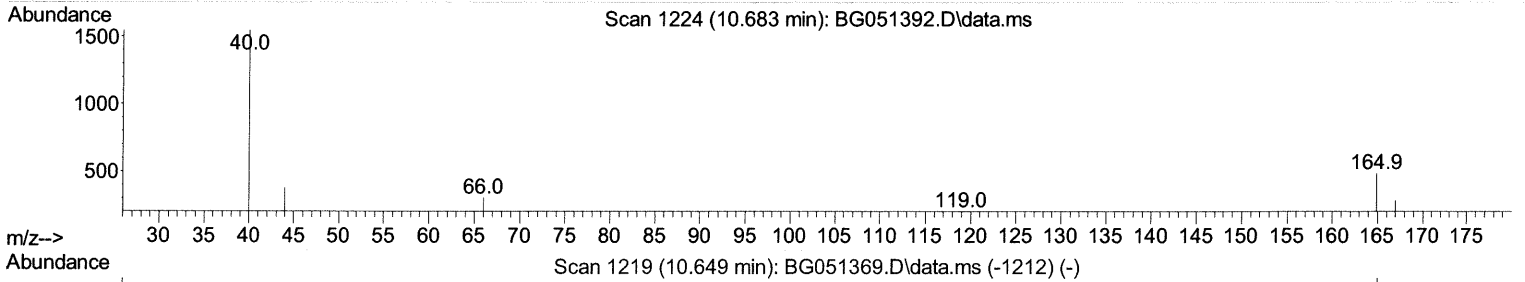
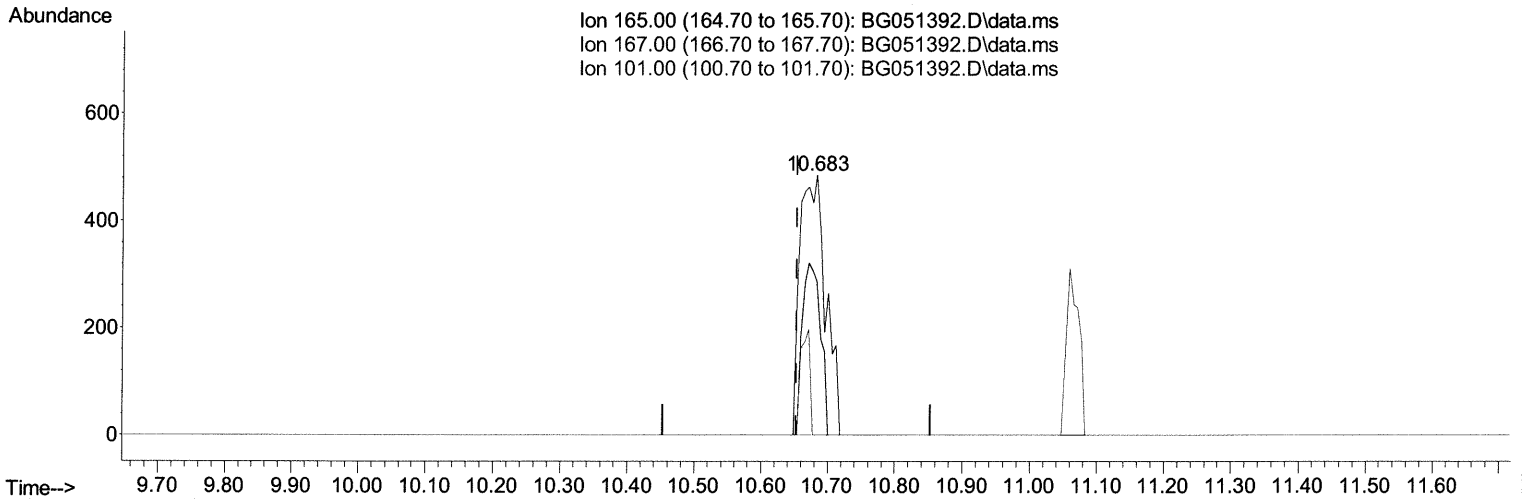
Data Path : Z:\svoasrv\HPCHEM1\BNA\_G\Data\BG120621\  
 Data File : BG051392.D  
 Acq On : 7 Dec 2021 21:23  
 Operator : CG/JU  
 Sample : M4868-11MEDL2 25X  
 Misc :  
 ALS Vial : 50 Sample Multiplier: 1

Instrument :  
 BNA\_G  
 ClientSampleId :  
 BGKP6MEDL2

Manual IntegrationsAPPROVED

Quant Time: Dec 08 02:23:42 2021  
 Quant Method : Z:\svoasrv\HPCHEM1\BNA\_G\Methods\SFAM-EPA-BG112321.M  
 Quant Title : SVOA CALIBRATION  
 QLast Update : Fri Dec 03 15:23:09 2021  
 Response via : Initial Calibration

Reviewed By :Jagrut Upadhyay 12/08/2021  
 Supervised By :mohammad ahmed 12/15/2021



(28) 2,4-Dichlorophenol-d3 (S)

10.683min (+ 0.030) 0.62 ng/ul m 12/16/21JU

response 1300

Ion	Exp%	Act%
165.00	100.00	100.00
167.00	64.30	59.38
101.00	34.40	0.00#
0.00	0.00	0.00

# Quantitation Report (Qedit)

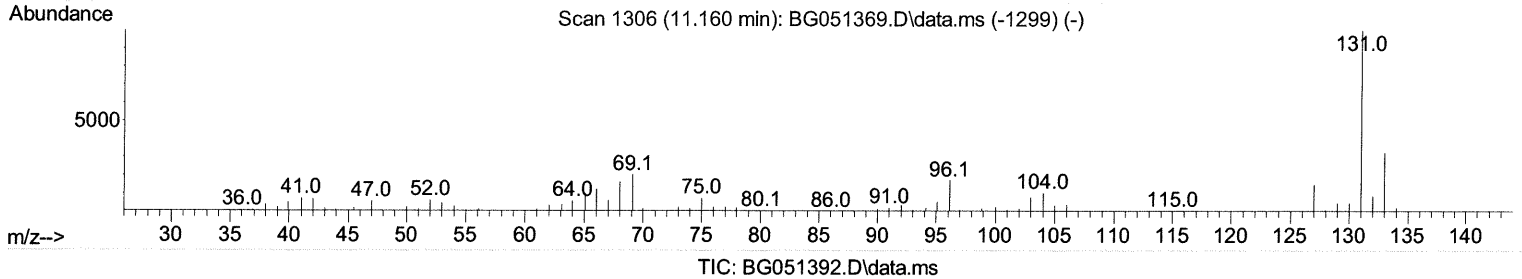
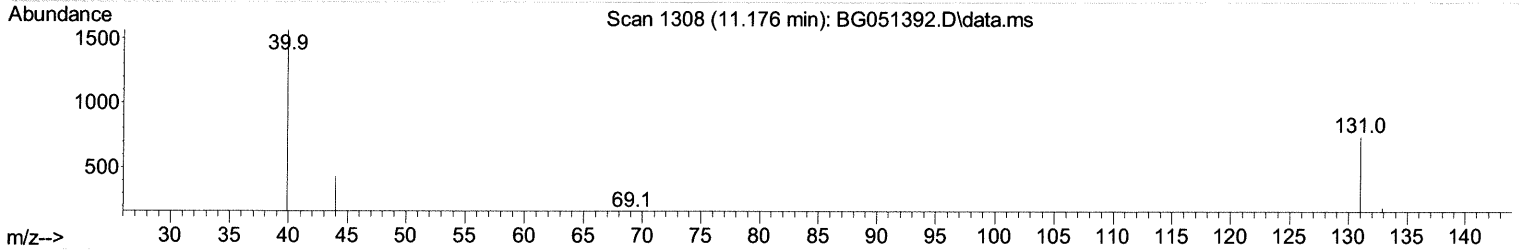
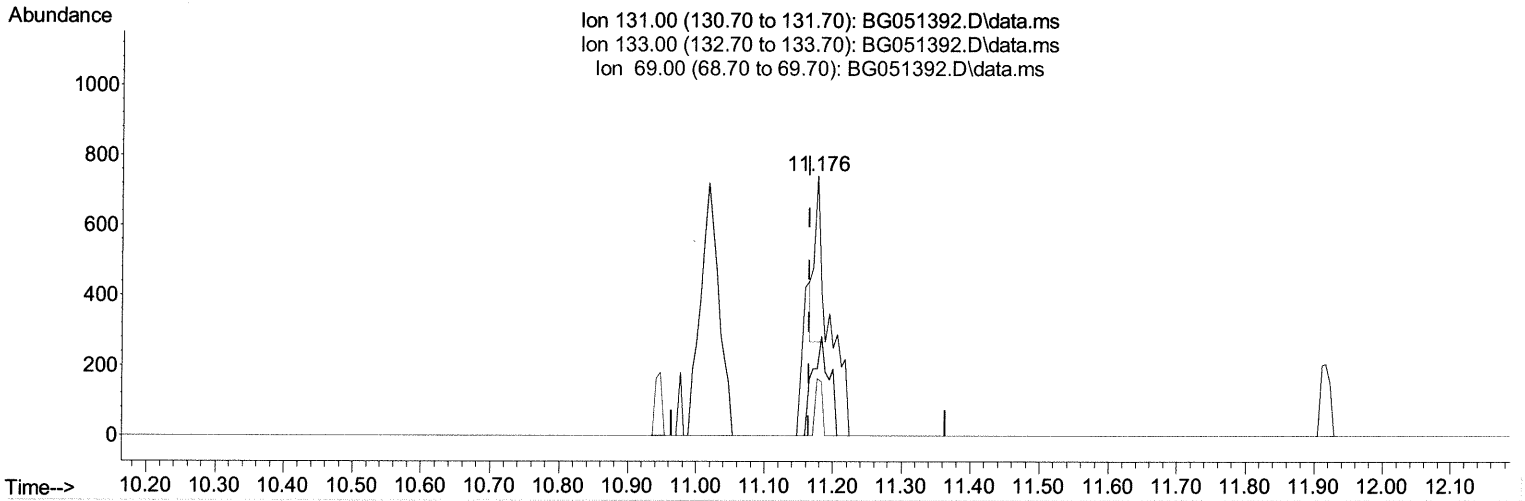
Data Path : Z:\svoasrv\HPCHEM1\BNA\_G\Data\BG120621\  
 Data File : BG051392.D  
 Acq On : 7 Dec 2021 21:23  
 Operator : CG/JU  
 Sample : M4868-11MEDL2 25X  
 Misc :  
 ALS Vial : 50 Sample Multiplier: 1

Instrument :  
 BNA\_G  
 ClientSampleId :  
 BGKP6MEDL2

Manual IntegrationsAPPROVED

Reviewed By :Jagrut Upadhyay 12/08/2021  
 Supervised By :mohammad ahmed 12/15/2021

Quant Time: Dec 08 08:38:38 2021  
 Quant Method : Z:\svoasrv\HPCHEM1\BNA\_G\Methods\SFAM-EPA-BG112321.M  
 Quant Title : SVOA CALIBRATION  
 QLast Update : Fri Dec 03 15:23:09 2021  
 Response via : Initial Calibration



(31) 4-Chloroaniline-d4 (S)

11.176min (+ 0.012) 0.10 ng/ul

response 293

Ion	Exp%	Act%
131.00	100.00	100.00
133.00	33.20	25.71#
69.00	21.30	21.80
0.00	0.00	0.00

# Quantitation Report (Qedit)

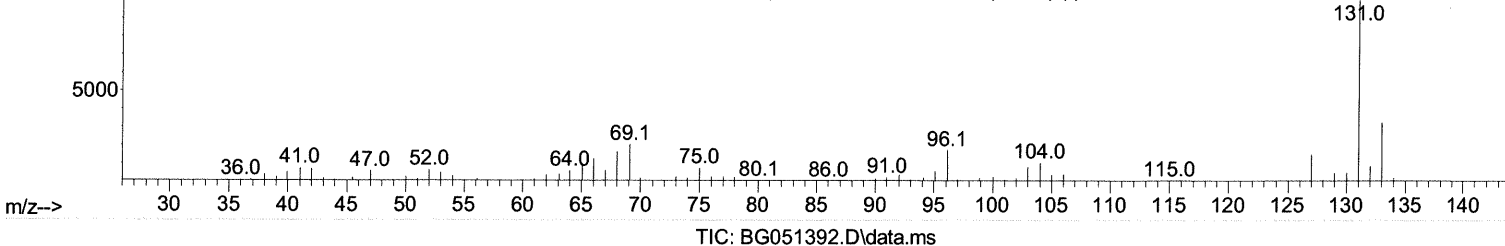
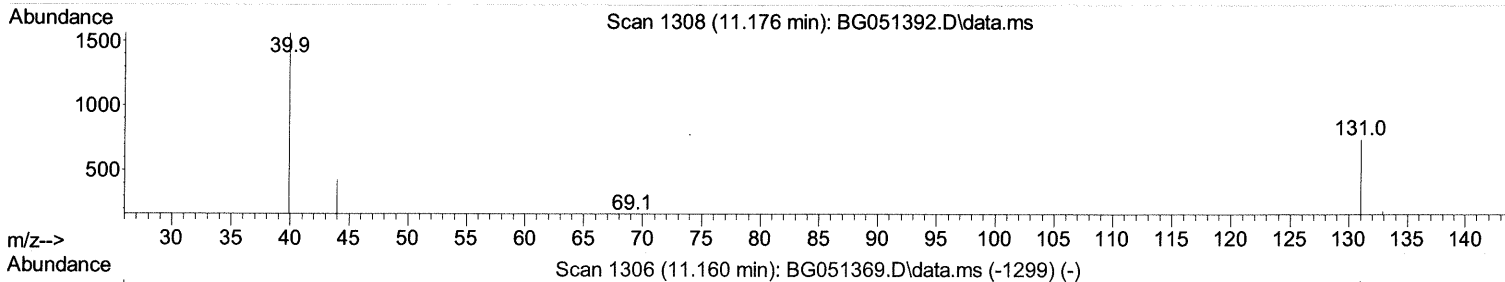
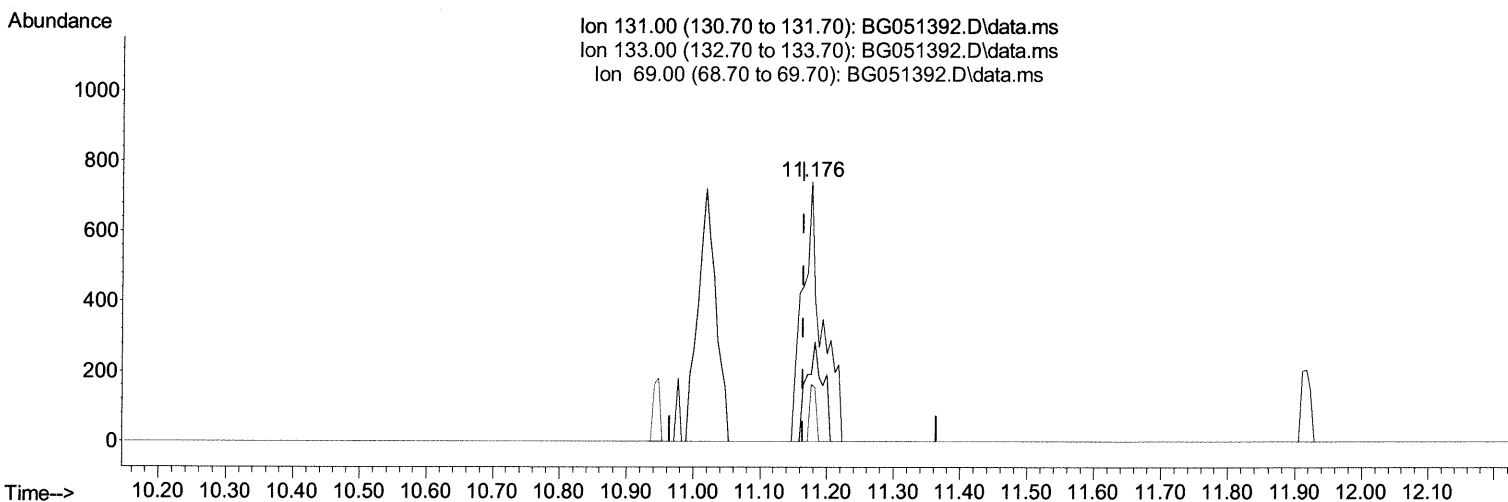
Data Path : Z:\svoasrv\HPCHEM1\BNA\_G\Data\BG120621\  
 Data File : BG051392.D  
 Acq On : 7 Dec 2021 21:23  
 Operator : CG/JU  
 Sample : M4868-11MEDL2 25X  
 Misc :  
 ALS Vial : 50 Sample Multiplier: 1

Instrument :  
 BNA\_G  
 ClientSampleId :  
 BGKP6MEDL2

Manual IntegrationsAPPROVED

Quant Time: Dec 08 02:23:42 2021  
 Quant Method : Z:\svoasrv\HPCHEM1\BNA\_G\Methods\SFAM-EPA-BG112321.M  
 Quant Title : SVOA CALIBRATION  
 QLast Update : Fri Dec 03 15:23:09 2021  
 Response via : Initial Calibration

Reviewed By :Jagrut Upadhyay 12/08/2021  
 Supervised By :mohammad ahmed 12/15/2021



(31) 4-Chloroaniline-d4 (S)

11.176min (+ 0.012) 0.49 ng/ul m 12/16/21JU

response 1507

Ion	Exp%	Act%
131.00	100.00	100.00
133.00	33.20	25.71#
69.00	21.30	21.80
0.00	0.00	0.00

Data Path : Z:\svoasrv\HPCHEM1\BNA\_G\Data\BG120621\  
 Data File : BG051392.D  
 Acq On : 7 Dec 2021 21:23  
 Operator : CG/JU  
 Sample : M4868-11MEDL2 25X  
 Misc :  
 ALS Vial : 50 Sample Multiplier: 1

Instrument :  
 BNA\_G  
 ClientSampleId :  
 BGKP6MEDL2

Manual IntegrationsAPPROVED

Reviewed By :Jagrut Upadhyay 12/08/2021  
 Supervised By :mohammad ahmed 12/15/2021

Quant Time: Dec 08 02:23:42 2021  
 Quant Method : Z:\svoasrv\HPCHEM1\BNA\_G\Methods\SFAM-EPA-BG112321.M  
 Quant Title : SVOA CALIBRATION  
 QLast Update : Fri Dec 03 15:23:09 2021  
 Response via : Initial Calibration

Compound	R.T.	QIon	Response	Conc	Units	Dev(Min)
Internal Standards						
1) 1,4-Dichlorobenzene-d4	8.186	152	29640	20.000	ng/ul	-0.02
20) Naphthalene-d8	11.012	136	129887	20.000	ng/ul	-0.02
38) Acenaphthene-d10	14.819	164	84621	20.000	ng/ul	-0.01
64) Phenanthrene-d10	17.569	188	173828	20.000	ng/ul	-0.01
79) Chrysene-d12	21.870	240	151896	20.000	ng/ul	-0.01
88) Perylene-d12	25.266	264	150502	20.000	ng/ul	-0.02
System Monitoring Compounds						
3) 1,4-Dioxane-d8	0.000	96	0	0.000	ng/ul	
4) Pyridine-d5	0.000	84	0d	0.000	ng/ul	
7) Phenol-d5	7.357	99	2017	0.689	ng/ul	0.00
9) Bis-(2-Chloroethyl)eth...	7.510	67	1577	0.857	ng/ul	0.00
11) 2-Chlorophenol-d4	7.728	132	1702	0.807	ng/ul	0.00
15) 4-Methylphenol-d8	8.920	113	1231	0.521	ng/ul	0.00
21) Nitrobenzene-d5	9.379	128	692	0.631	ng/ul	0.00
24) 2-Nitrophenol-d4	10.101	143	753	0.609	ng/ul	0.00
28) 2,4-Dichlorophenol-d3	10.683	165	1300m	0.619	ng/ul	0.03
31) 4-Chloroaniline-d4	11.176	131	1507m	0.491	ng/ul	0.01
46) Dimethylphthalate-d6	14.214	166	5914	0.908	ng/ul	-0.01
49) Acenaphthylene-d8	14.520	160	8124	0.989	ng/ul	-0.01
54) 4-Nitrophenol-d4	0.000	143	0	0.000	ng/ul	
60) Fluorene-d10	15.818	176	6163	1.051	ng/ul	0.00
65) 4,6-Dinitro-2-methylph...	0.000	200	0	0.000	ng/ul	
73) Anthracene-d10	17.675	188	9892	1.190	ng/ul	0.00
81) Pyrene-d10	19.954	212	10556	1.149	ng/ul	0.00
92) Benzo(a)pyrene-d12	25.031	264	8632	1.074	ng/ul	-0.01
Target Compounds						
30) Naphthalene	11.065	128	18563	2.627	ng/ul	99
36) 2-Methylnaphthalene	12.663	142	17596	3.660	ng/ul	99
37) 1-Methylnaphthalene	12.874	142	7167	1.449	ng/ul#	89
83) Butylbenzylphthalate	20.836	149	187471	40.837	ng/ul	99
86) Bis(2-ethylhexyl)phtha...	21.705	149	184724	27.963	ng/ul	99
89) Di-n-octyl phthalate	22.974	149	33204	3.045	ng/ul	100

(#) = qualifier out of range (m) = manual integration (+) = signals summed