

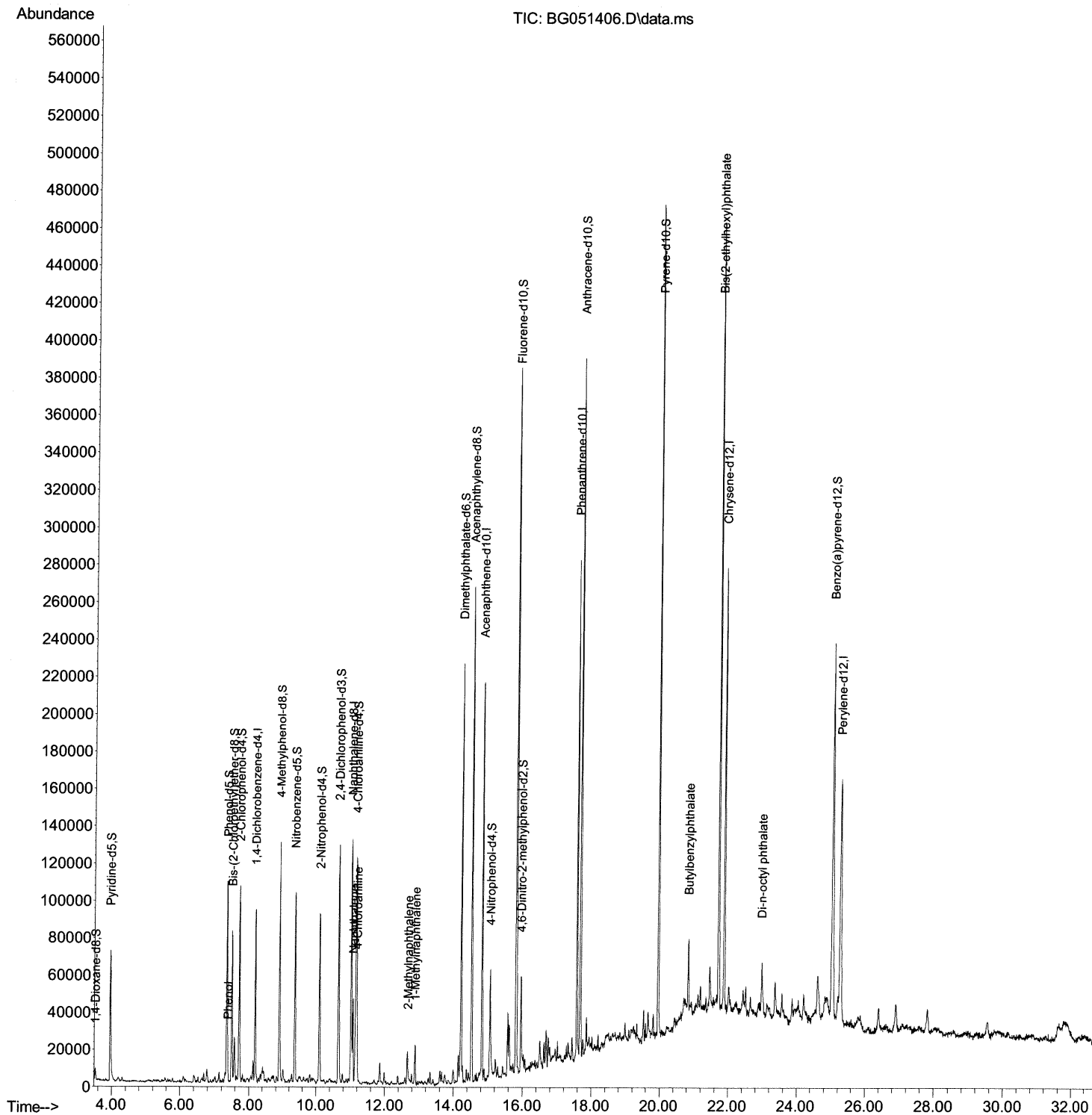
Data Path : Z:\svoasrv\HPCHEM1\BNA_G\Data\BG120621\
Data File : BG051406.D
Acq On : 8 Dec 2021 13:14
Operator : CG/JU
Sample : M4960-05
Misc :
ALS Vial : 64 Sample Multiplier: 1

Instrument :
BNA_G
ClientSampleId :
BGKS0

Manual IntegrationsAPPROVED

Quant Time: Dec 09 04:04:57 2021
Quant Method : Z:\svoasrv\HPCHEM1\BNA_G\Methods\SFAM-EPA-BG112321.M
Quant Title : SVOA CALIBRATION
QLast Update : Fri Dec 03 15:23:09 2021
Response via : Initial Calibration

Reviewed By :Jagrut Upadhyay 12/09/2021
Supervised By :mohammad ahmed 12/15/2021



Quantitation Report (Qedit)

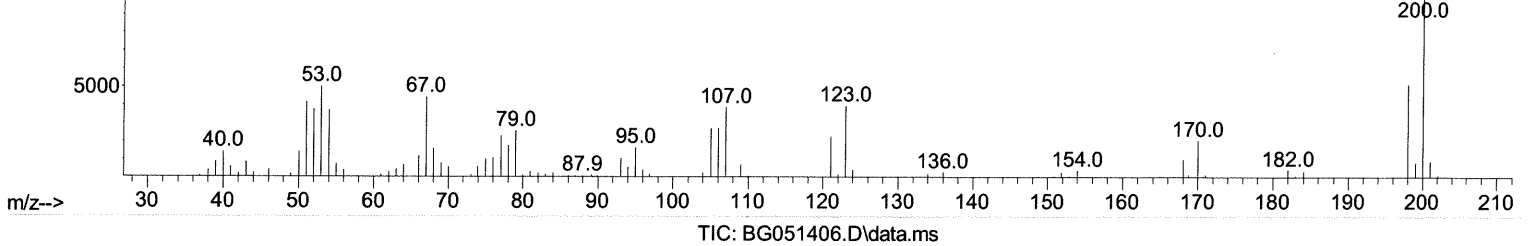
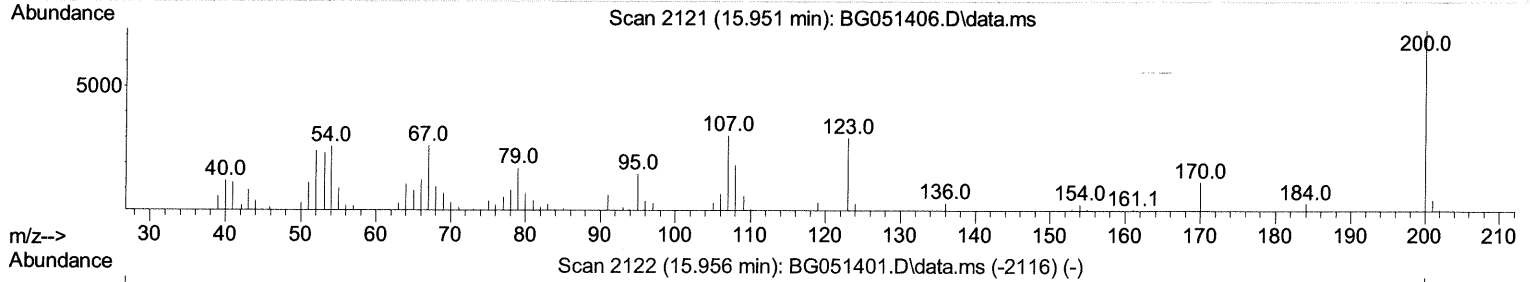
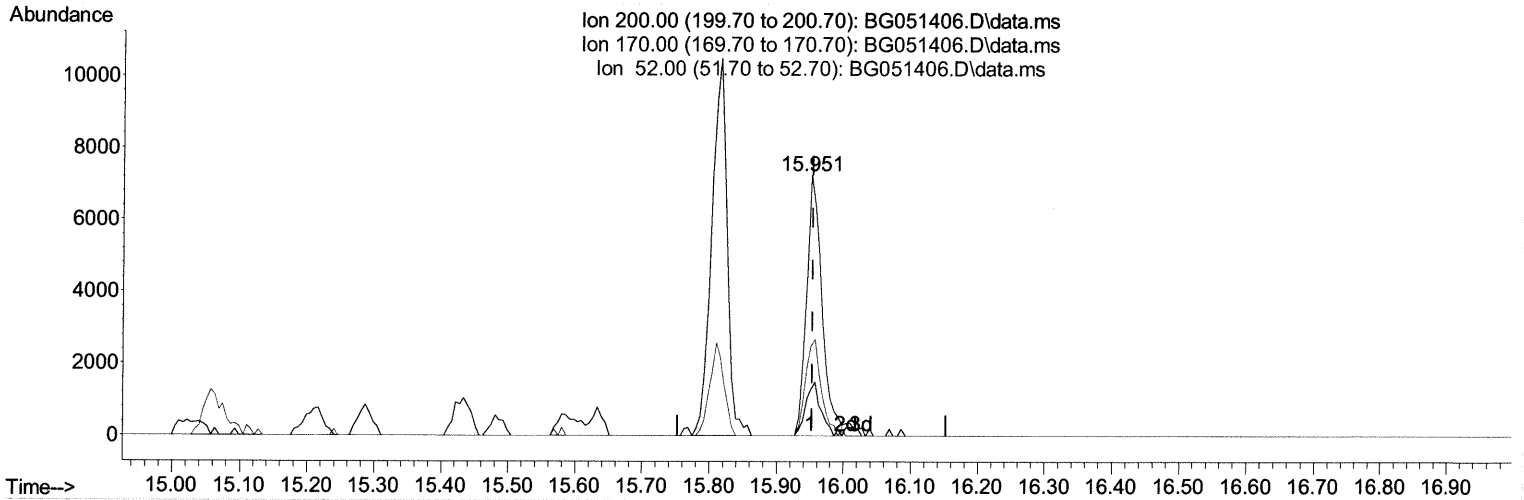
Data Path : Z:\svoasrv\HPCHEM1\BNA_G\Data\BG120621\
 Data File : BG051406.D
 Acq On : 8 Dec 2021 13:14
 Operator : CG/JU
 Sample : M4960-05
 Misc :
 ALS Vial : 64 Sample Multiplier: 1

Instrument :
 BNA_G
 ClientSampleId :
 BGKS0

Manual IntegrationsAPPROVED

Quant Time: Dec 09 04:04:57 2021
 Quant Method : Z:\svoasrv\HPCHEM1\BNA_G\Methods\SFAM-EPA-BG112321.M
 Quant Title : SVOA CALIBRATION
 QLast Update : Fri Dec 03 15:23:09 2021
 Response via : Initial Calibration

Reviewed By :Jagrut Upadhyay 12/09/2021
 Supervised By :mohammad ahmed 12/15/2021



(65) 4,6-Dinitro-2-methylphenol-d2 (S)

15.951min (-0.002) 11.83 ng/ul

response 11686

Ion	Exp%	Act%
200.00	100.00	100.00
170.00	19.80	17.69
52.00	47.40	34.29#
0.00	0.00	0.00

Quantitation Report (Qedit)

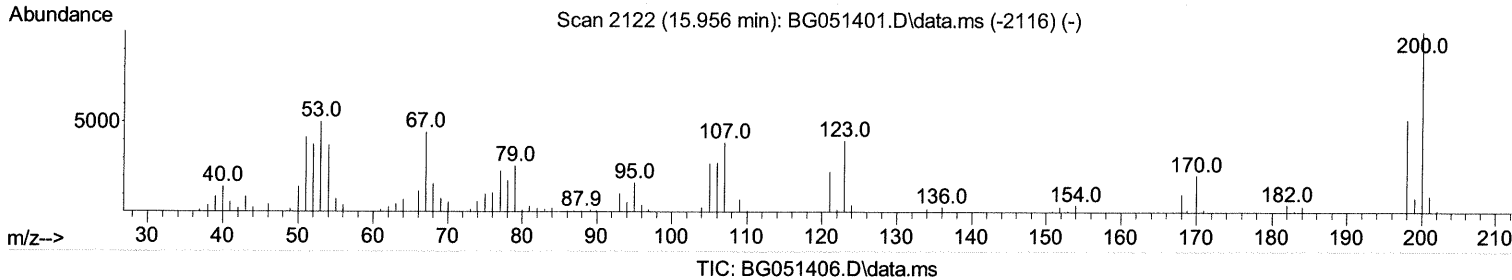
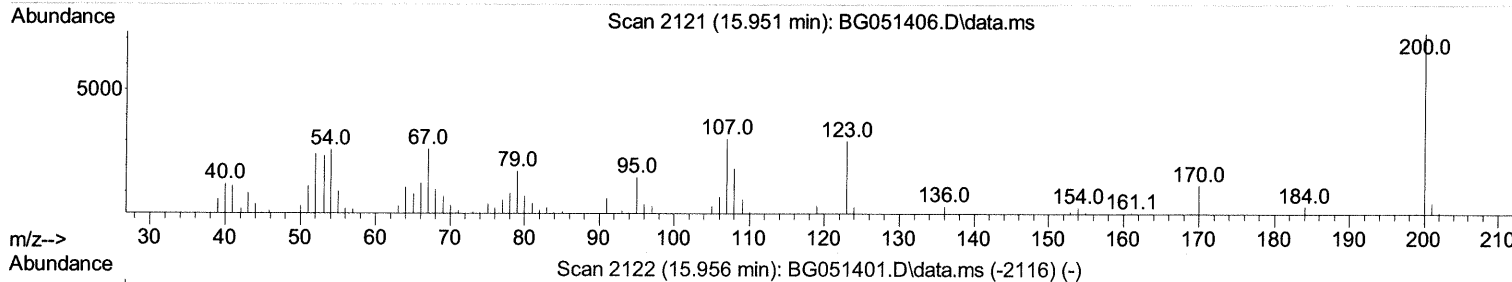
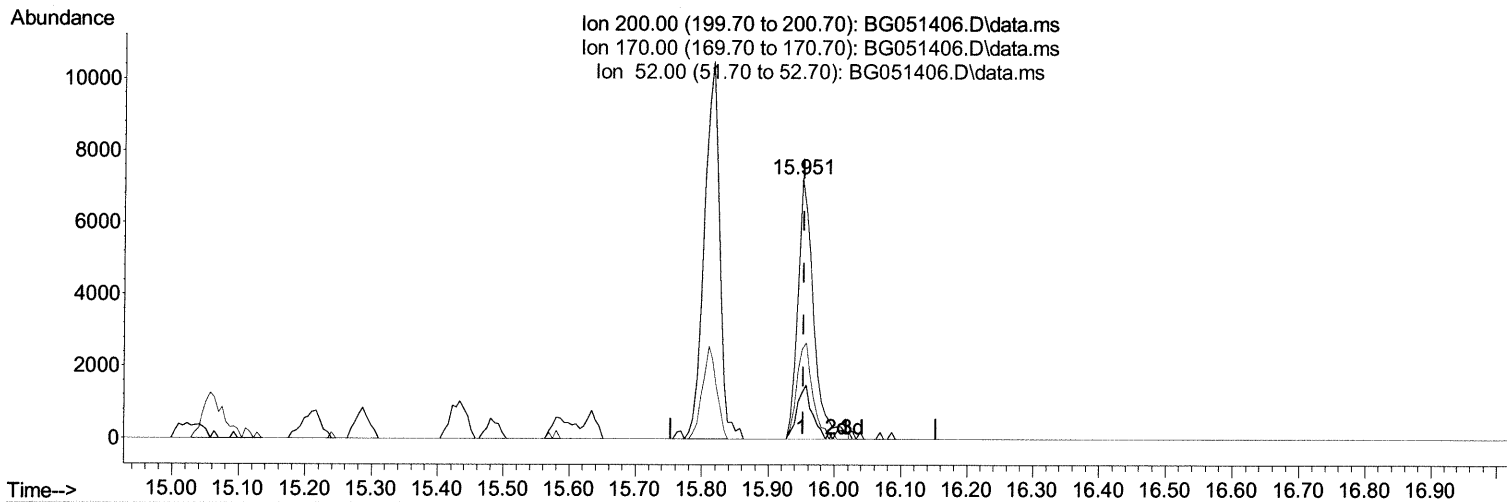
Data Path : Z:\svoasrv\HPCHEM1\BNA_G\Data\BG120621\
 Data File : BG051406.D
 Acq On : 8 Dec 2021 13:14
 Operator : CG/JU
 Sample : M4960-05
 Misc :
 ALS Vial : 64 Sample Multiplier: 1

Instrument :
 BNA_G
 ClientSampleId :
 BGKS0

Manual IntegrationsAPPROVED

Quant Time: Dec 09 04:04:57 2021
 Quant Method : Z:\svoasrv\HPCHEM1\BNA_G\Methods\SFAM-EPA-BG112321.M
 Quant Title : SVOA CALIBRATION
 QLast Update : Fri Dec 03 15:23:09 2021
 Response via : Initial Calibration

Reviewed By :Jagrut Upadhyay 12/09/2021
 Supervised By :mohammad ahmed 12/15/2021



TIC: BG051406.D\data.ms

(65) 4,6-Dinitro-2-methylphenol-d2 (S)

15.951min (-0.002) 12.21 ng/ul m 12/16/21 JU

response 12056

Ion	Exp%	Act%
200.00	100.00	100.00
170.00	19.80	17.69
52.00	47.40	34.29#
0.00	0.00	0.00

Data Path : Z:\svoasrv\HPCHEM1\BNA_G\Data\BG120621\
 Data File : BG051406.D
 Acq On : 8 Dec 2021 13:14
 Operator : CG/JU
 Sample : M4960-05
 Misc :
 ALS Vial : 64 Sample Multiplier: 1

Instrument :
 BNA_G
 ClientSampleId :
 BGKS0

Manual IntegrationsAPPROVED

Reviewed By :Jagrut Upadhyay 12/09/2021
 Supervised By :mohammad ahmed 12/15/2021

Quant Time: Dec 09 04:04:57 2021
 Quant Method : Z:\svoasrv\HPCHEM1\BNA_G\Methods\SFAM-EPA-BG112321.M
 Quant Title : SVOA CALIBRATION
 QLast Update : Fri Dec 03 15:23:09 2021
 Response via : Initial Calibration

Compound	R.T.	QIon	Response	Conc	Units	Dev(Min)

Internal Standards						
1) 1,4-Dichlorobenzene-d4	8.189	152	25475	20.000	ng/ul	-0.01
20) Naphthalene-d8	11.015	136	110353	20.000	ng/ul	-0.01
38) Acenaphthene-d10	14.822	164	73334	20.000	ng/ul	0.00
64) Phenanthrene-d10	17.572	188	160031	20.000	ng/ul	0.00
79) Chrysene-d12	21.873	240	144075	20.000	ng/ul	0.00
88) Perylene-d12	25.269	264	144052	20.000	ng/ul	-0.01
System Monitoring Compounds						
3) 1,4-Dioxane-d8	3.530	96	3580	4.884	ng/ul	-0.01
4) Pyridine-d5	3.959	84	47821	22.231	ng/ul	-0.02
7) Phenol-d5	7.355	99	65121	25.864	ng/ul	0.00
9) Bis-(2-Chloroethyl)eth...	7.502	67	41605	26.311	ng/ul	-0.01
11) 2-Chlorophenol-d4	7.719	132	48502	26.752	ng/ul	-0.01
15) 4-Methylphenol-d8	8.906	113	52597	25.887	ng/ul	0.00
21) Nitrobenzene-d5	9.364	128	25156	27.005	ng/ul	-0.01
24) 2-Nitrophenol-d4	10.093	143	28432	27.057	ng/ul	0.00
28) 2,4-Dichlorophenol-d3	10.645	165	48714	27.323	ng/ul	0.00
31) 4-Chloroaniline-d4	11.156	131	64090	24.567	ng/ul	0.00
46) Dimethylphthalate-d6	14.217	166	148015	26.232	ng/ul	0.00
49) Acenaphthylene-d8	14.517	160	196534	27.621	ng/ul	-0.01
54) 4-Nitrophenol-d4	15.057	143	19781	21.658	ng/ul	0.00
60) Fluorene-d10	15.815	176	132207	26.019	ng/ul	0.00
65) 4,6-Dinitro-2-methylph...	15.951	200	12056m	12.209	ng/ul >	0.00 12/16/21
73) Anthracene-d10	17.672	188	213168	27.852	ng/ul	0.00
81) Pyrene-d10	19.952	212	237820	27.280	ng/ul	0.00
92) Benzo(a)pyrene-d12	25.040	264	204688	26.606	ng/ul	0.00
Target Compounds						
8) Phenol	7.390	94	3683	1.412	ng/ul#	87
30) Naphthalene	11.068	128	36751	6.121	ng/ul	98
32) 4-Chloroaniline	11.186	127	20327	7.761	ng/ul	100
36) 2-Methylnaphthalene	12.666	142	4116	1.008	ng/ul	100
37) 1-Methylnaphthalene	12.878	142	9930	2.363	ng/ul#	97
83) Butylbenzylphthalate	20.839	149	9642	2.214	ng/ul	99
86) Bis(2-ethylhexyl)phtha...	21.709	149	186642	29.787	ng/ul	99
89) Di-n-octyl phthalate	22.978	149	35982	3.448	ng/ul	100

(#) = qualifier out of range (m) = manual integration (+) = signals summed