

Data Path : Z:\svoasrv\HPCHEM1\BNA_G\Data\BG120621\
 Data File : BG051397.D
 Acq On : 8 Dec 2021 00:47
 Operator : CG/JU
 Sample : M4870-05
 Misc :
 ALS Vial : 55 Sample Multiplier: 1

Instrument :
 BNA_G
 ClientSampleId :
 BGKP2

Manual Integrations
 APPROVED

Reviewed By :Jagrut Upadhyay 12/08/2021
 Supervised By :mohammad ahmed 12/15/2021

Quant Time: Dec 08 05:26:43 2021
 Quant Method : Z:\svoasrv\HPCHEM1\BNA_G\Methods\SFAM-EPA-BG112321.M
 Quant Title : SVOA CALIBRATION
 QLast Update : Fri Dec 03 15:23:09 2021
 Response via : Initial Calibration

Compound	R.T.	QIon	Response	Conc	Units	Dev(Min)
Internal Standards						
1) 1,4-Dichlorobenzene-d4	8.189	152	29891	20.000	ng/u1	-0.01
20) Naphthalene-d8	11.015	136	124792	20.000	ng/u1	-0.01
38) Acenaphthene-d10	14.822	164	82076	20.000	ng/u1	0.00
64) Phenanthrene-d10	17.572	188	182558	20.000	ng/u1	0.00
79) Chrysene-d12	21.873	240	172992	20.000	ng/u1	0.00
88) Perylene-d12	25.274	264	171225	20.000	ng/u1	0.00
System Monitoring Compounds						
3) 1,4-Dioxane-d8	3.529	96	4231m	4.919	ng/uL	-0.01
4) Pyridine-d5	3.964	84	14814	5.869	ng/u1	-0.01
7) Phenol-d5	7.354	99	20008	6.773	ng/u1	0.00
9) Bis-(2-Chloroethyl)eth...	7.501	67	51503	27.758	ng/u1	-0.01
11) 2-Chlorophenol-d4	7.724	132	47507	22.332	ng/u1	0.00
15) 4-Methylphenol-d8	8.905	113	35694	14.972	ng/u1	0.00
21) Nitrobenzene-d5	9.364	128	30949	29.379	ng/u1	-0.01
24) 2-Nitrophenol-d4	10.092	143	32997	27.768	ng/u1	0.00
28) 2,4-Dichlorophenol-d3	10.645	165	57011	28.277	ng/u1	0.00
31) 4-Chloroaniline-d4	11.156	131	62611	21.224	ng/u1	0.00
46) Dimethylphthalate-d6	14.217	166	203360	32.201	ng/u1	0.00
49) Acenaphthylene-d8	14.516	160	239394	30.062	ng/u1	-0.01
54) 4-Nitrophenol-d4	15.069	143	7764	7.595	ng/u1	0.02
60) Fluorene-d10	15.809	176	179666	31.593	ng/u1	-0.01
65) 4,6-Dinitro-2-methylph...	15.950	200	28034	24.886	ng/u1	0.00
73) Anthracene-d10	17.672	188	309479	35.446	ng/u1	0.00
81) Pyrene-d10	19.951	212	375944	35.916	ng/u1	0.00
92) Benzo(a)pyrene-d12	25.039	264	328827	35.959	ng/u1	0.00
Target Compounds						
8) Phenol	7.384	94	7303	2.386	ng/u1	97
30) Naphthalene	11.062	128	30008	4.419	ng/u1	97
36) 2-Methylnaphthalene	12.660	142	10977	2.377	ng/u1	95
37) 1-Methylnaphthalene	12.877	142	7980	1.679	ng/u1	96
83) Butylbenzylphthalate	20.838	149	17146	3.279	ng/u1	98

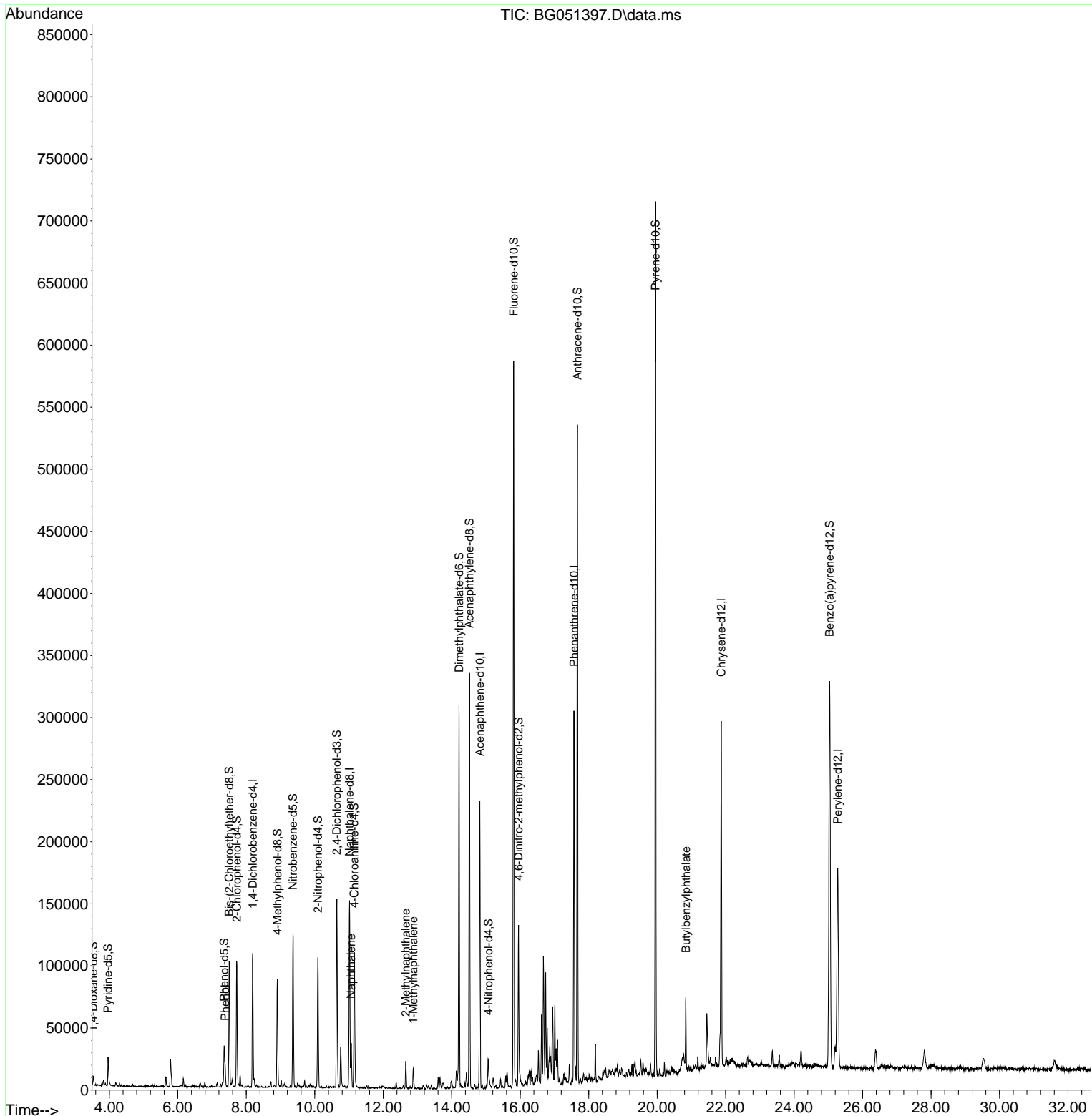
(#) = qualifier out of range (m) = manual integration (+) = signals summed

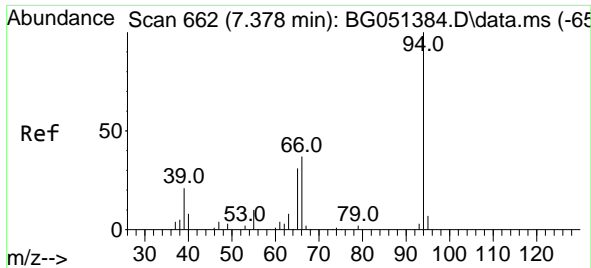
Data Path : Z:\svoasrv\HPCHEM1\BNA_G\Data\BG120621\
 Data File : BG051397.D
 Acq On : 8 Dec 2021 00:47
 Operator : CG/JU
 Sample : M4870-05
 Misc :
 ALS Vial : 55 Sample Multiplier: 1

Instrument :
 BNA_G
ClientSampleId :
 BGKP2

Quant Time: Dec 08 05:26:43 2021
 Quant Method : Z:\svoasrv\HPCHEM1\BNA_G\Methods\SFAM-EPA-BG112321.M
 Quant Title : SVOA CALIBRATION
 QLast Update : Fri Dec 03 15:23:09 2021
 Response via : Initial Calibration

Manual Integrations
APPROVED
 Reviewed By :Jagrut Upadhyay 12/08/2021
 Supervised By :mohammad ahmed 12/15/2021





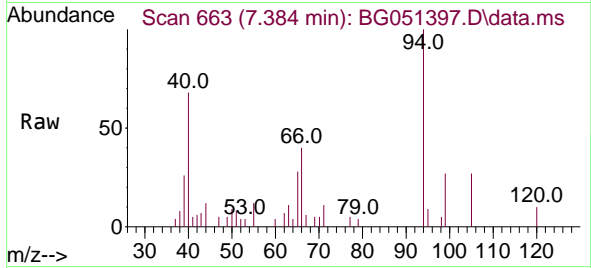
#8
 Phenol
 Concen: 2.386 ng/u1
 RT: 7.384 min Scan# 60
 Delta R.T. -0.003 min
 Lab File: BG051397.D
 Acq: 8 Dec 2021 00:47

Instrument :

BNA_G

ClientSampleId :

BGKP2

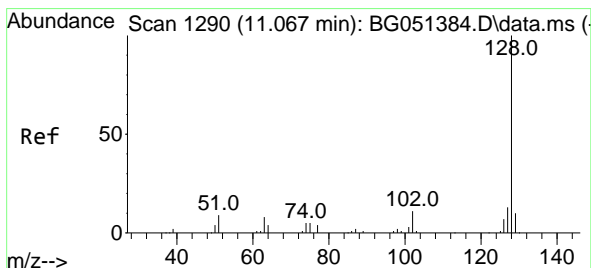
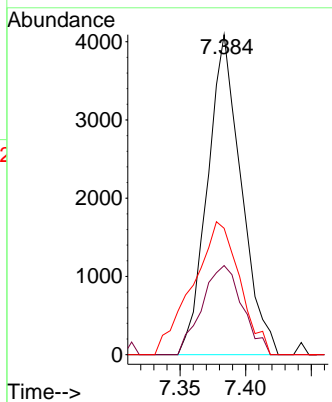
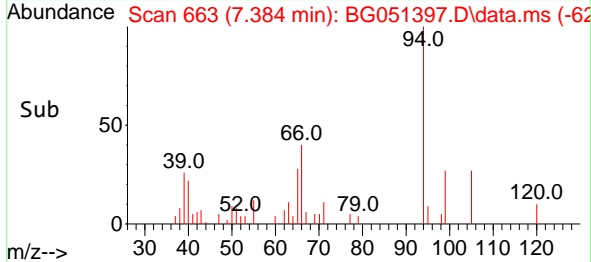


Tgt Ion: 94 Resp: 730
 Ion Ratio Lower Upper
 94 100
 65 27.8 25.1 37.7
 66 39.5 31.6 47.4

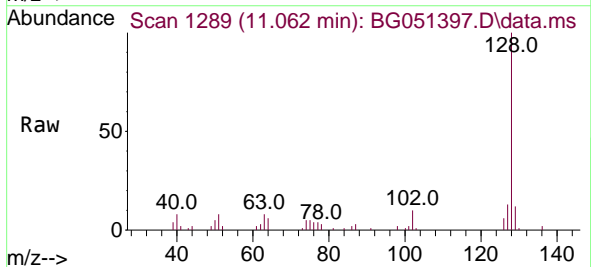
Manual Integrations

APPROVED

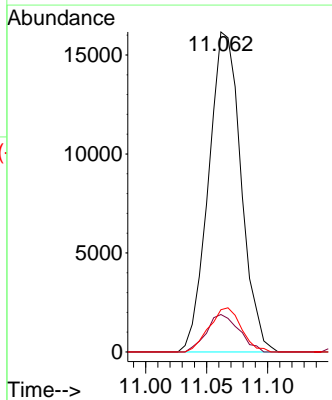
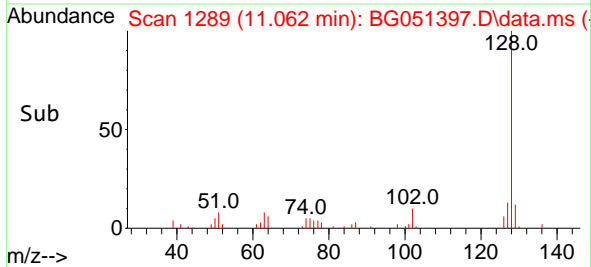
Reviewed By :Jagrut Upadhyay 12/08/2021
 Supervised By :mohammad ahmed 12/15/2021

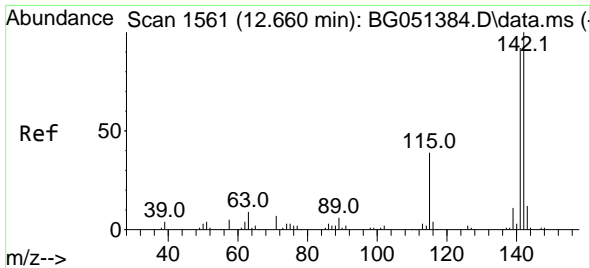


#30
 Naphthalene
 Concen: 4.419 ng/u1
 RT: 11.062 min Scan# 1289
 Delta R.T. -0.014 min
 Lab File: BG051397.D
 Acq: 8 Dec 2021 00:47



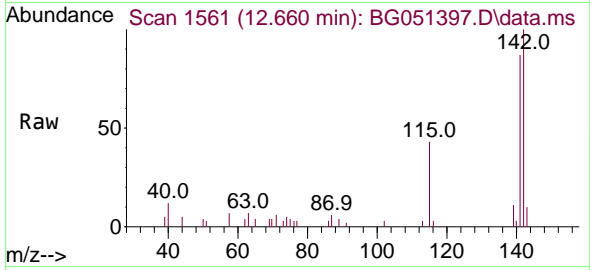
Tgt Ion:128 Resp: 30008
 Ion Ratio Lower Upper
 128 100
 129 11.7 8.5 12.7
 127 13.2 11.8 17.6





#36
 2-Methylnaphthalene
 Concen: 2.377 ng/ul
 RT: 12.660 min Scan# 1561
 Delta R.T. -0.009 min
 Lab File: BG051397.D
 Acq: 8 Dec 2021 00:47

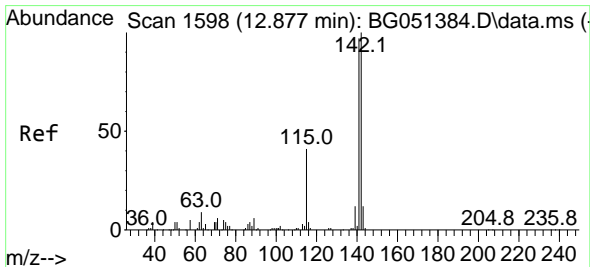
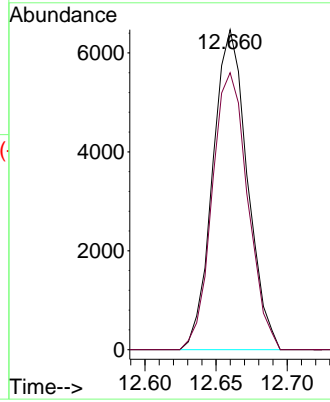
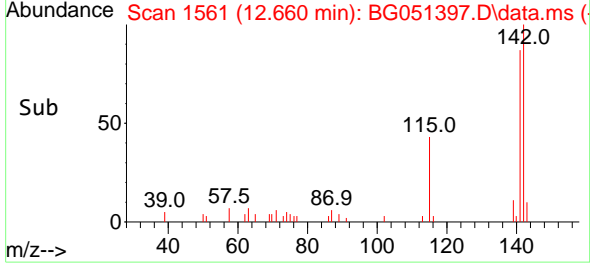
Instrument : BNA_G
 ClientSampleId : BGKP2



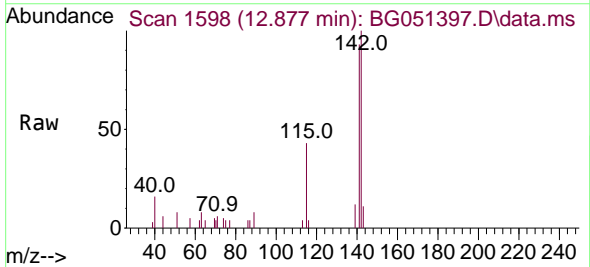
Tgt Ion:142 Resp: 1097
 Ion Ratio Lower Upper
 142 100
 141 86.6 73.3 109.9

Manual Integrations
 APPROVED

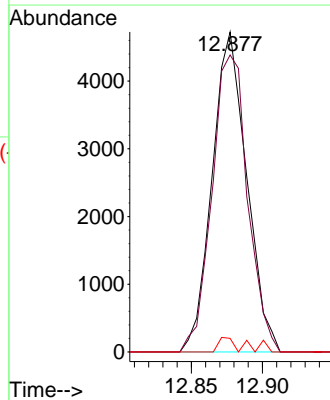
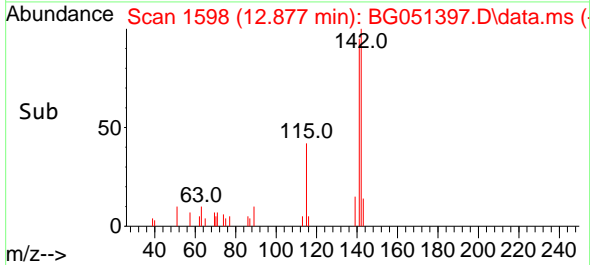
Reviewed By :Jagrut Upadhyay 12/08/2021
 Supervised By :mohammad ahmed 12/15/2021

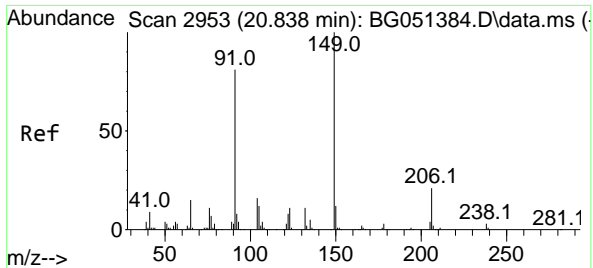


#37
 1-Methylnaphthalene
 Concen: 1.679 ng/ul
 RT: 12.877 min Scan# 1598
 Delta R.T. -0.009 min
 Lab File: BG051397.D
 Acq: 8 Dec 2021 00:47



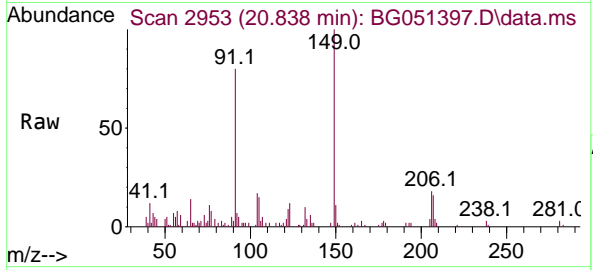
Tgt Ion:142 Resp: 7980
 Ion Ratio Lower Upper
 142 100
 141 92.8 77.8 116.8
 116 4.2 3.3 4.9





#83
 Butylbenzylphthalate
 Concen: 3.279 ng/ul
 RT: 20.838 min Scan# 2953
 Delta R.T. -0.009 min
 Lab File: BG051397.D
 Acq: 8 Dec 2021 00:47

Instrument :
 BNA_G
 ClientSampleId :
 BGKP2



Tgt Ion:149 Resp: 17140

Ion	Ratio	Lower	Upper
149	100		
91	80.2	65.2	97.8
206	18.5	16.2	24.2

Manual Integrations
APPROVED
 Reviewed By :Jagrut Upadhyay 12/08/2021
 Supervised By :mohammad ahmed 12/15/2021

