

Data Path : Z:\HPCHEM1\BNA_G\DATA\BG120715\
 Data File : BG019998.D
 Acq On : 8 Dec 2015 2:03
 Operator : UM/NP
 Sample : G4676-10
 Misc :
 ALS Vial : 21 Sample Multiplier: 1

Instrument :
 BNA_G
 ClientSampleId :
 MW-16

Quant Time: Dec 08 04:45:48 2015
 Quant Method : Z:\HPCHEM1\BNA_G\METHODS\8270-BG120215.M
 Quant Title : ASP BNA STANDARDS FOR 5 POINT CALIBRATION
 QLast Update : Wed Dec 02 18:50:01 2015
 Response via : Initial Calibration

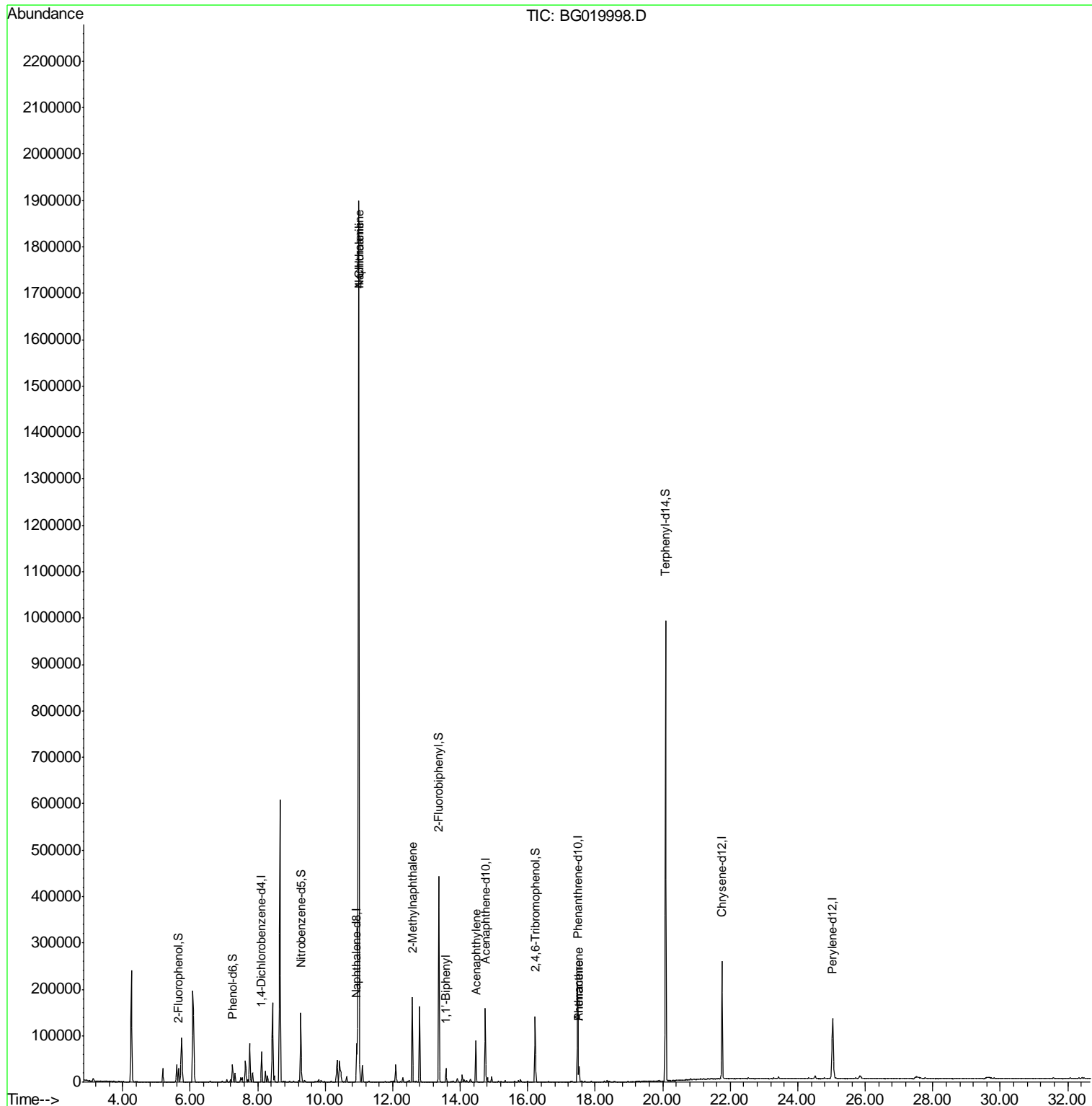
| Internal Standards | R.T. | QIon | Response | Conc | Units | Dev(Min) |
|-----------------------------|-------|------|----------|--------|-------|----------|
| 1) 1,4-Dichlorobenzene-d4 | 8.11 | 152 | 17462 | 20.00 | ng | -0.02 |
| 21) Naphthalene-d8 | 10.93 | 136 | 74545 | 20.00 | ng | -0.02 |
| 38) Acenaphthene-d10 | 14.74 | 164 | 52885 | 20.00 | ng | -0.02 |
| 63) Phenanthrene-d10 | 17.48 | 188 | 134068 | 20.00 | ng | -0.03 |
| 75) Chrysene-d12 | 21.76 | 240 | 163331 | 20.00 | ng | -0.04 |
| 86) Perylene-d12 | 25.04 | 264 | 151268 | 20.00 | ng | -0.06 |
| System Monitoring Compounds | | | | | | |
| 5) 2-Fluorophenol | 5.66 | 112 | 12831 | 13.28 | ng | -0.01 |
| 7) Phenol-d6 | 7.26 | 99 | 15933 | 10.92 | ng | -0.02 |
| 23) Nitrobenzene-d5 | 9.28 | 82 | 91740 | 62.81 | ng | -0.02 |
| 41) 2,4,6-Tribromophenol | 16.22 | 330 | 25814 | 31.90 | ng | -0.02 |
| 44) 2-Fluorobiphenyl | 13.37 | 172 | 227639 | 58.77 | ng | -0.02 |
| 78) Terphenyl-d14 | 20.08 | 244 | 437905 | 65.40 | ng | -0.03 |
| Target Compounds | | | | | | |
| 31) Naphthalene | 10.99 | 128 | 1572260 | 393.71 | ng | # 94 |
| 33) 4-Chloroaniline | 10.99 | 127 | 235217 | 133.67 | ng | # 34 |
| 37) 2-Methylnaphthalene | 12.58 | 142 | 84099 | 28.74 | ng | 97 |
| 45) 1,1'-Biphenyl | 13.58 | 154 | 14585 | 3.36 | ng | 99 |
| 48) Acenaphthylene | 14.47 | 152 | 64232 | 11.27 | ng | 97 |
| 70) Phenanthrene | 17.52 | 178 | 23210 | 3.06 | ng | 97 |
| 71) Anthracene | 17.52 | 178 | 23210 | 3.00 | ng | 97 |

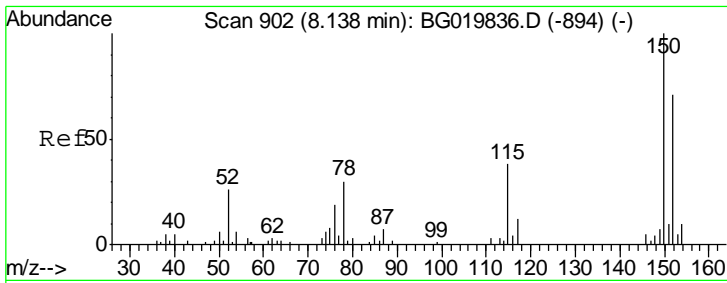
(#) = qualifier out of range (m) = manual integration (+) = signals summed

Data Path : Z:\HPCHEM1\BNA_G\DATA\BG120715\
 Data File : BG019998.D
 Acq On : 8 Dec 2015 2:03
 Operator : UM/NP
 Sample : G4676-10
 Misc :
 ALS Vial : 21 Sample Multiplier: 1

Instrument :
 BNA_G
 ClientSampled :
 MW-16

Quant Time: Dec 08 04:45:48 2015
 Quant Method : Z:\HPCHEM1\BNA_G\METHODS\8270-BG120215.M
 Quant Title : ASP BNA STANDARDS FOR 5 POINT CALIBRATION
 QLast Update : Wed Dec 02 18:50:01 2015
 Response via : Initial Calibration

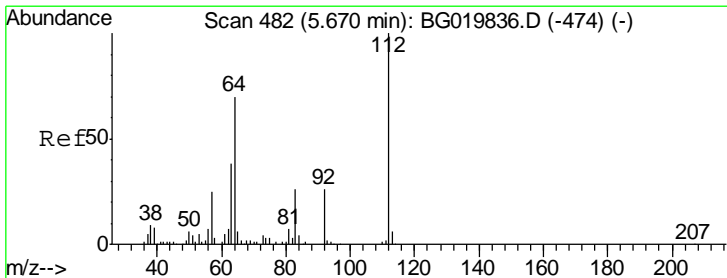
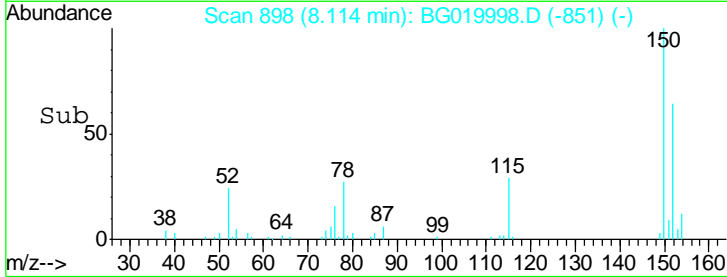
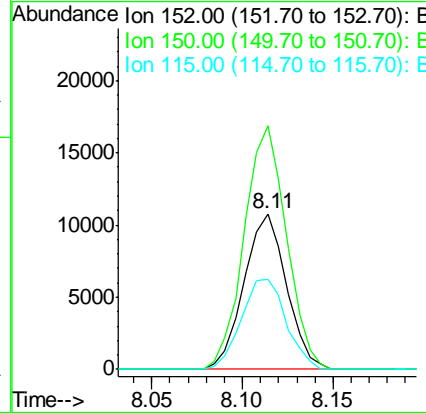
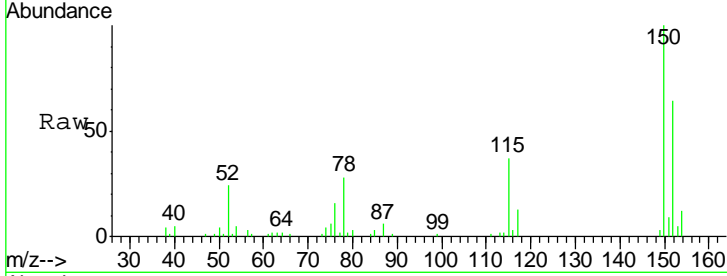




#1
 1,4-Dichlorobenzene-d4
 Concen: 20.00 ng
 RT: 8.11 min Scan# 898
 Delta R.T. -0.02 min
 Lab File: BG019998.D
 Acq: 8 Dec 2015 2:03

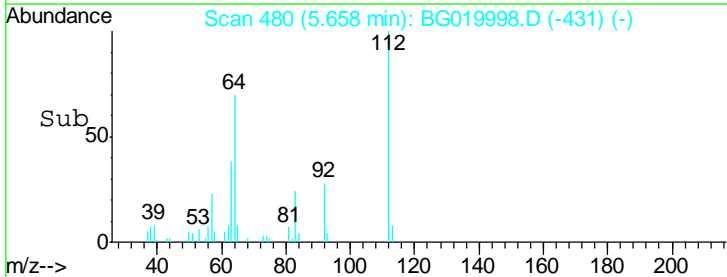
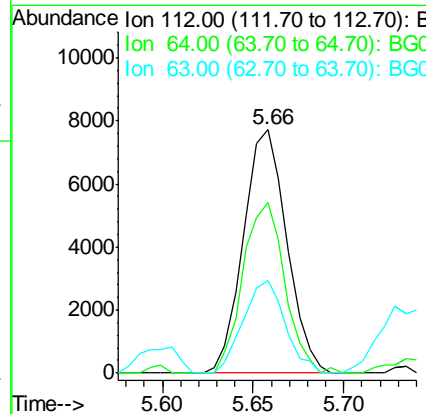
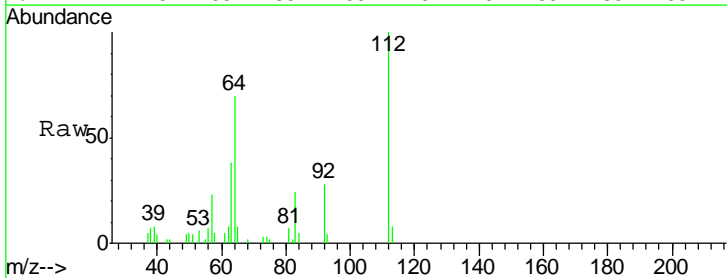
Instrument :
 BNA_G
 ClientSampled :
 MW-16

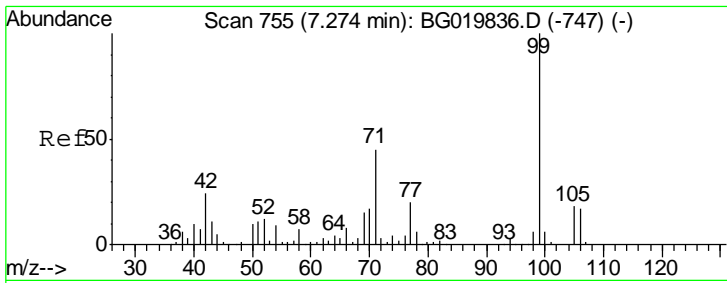
| Tgt Ion | Resp | Lower | Upper |
|---------|-------|-------|-------|
| 152 | 17462 | | |
| 150 | 156.4 | 115.0 | 172.4 |
| 115 | 57.5 | 43.9 | 65.9 |



#5
 2-Fluorophenol
 Concen: 13.28 ng
 RT: 5.66 min Scan# 480
 Delta R.T. -0.01 min
 Lab File: BG019998.D
 Acq: 8 Dec 2015 2:03

| Tgt Ion | Resp | Lower | Upper |
|---------|-------|-------|-------|
| 112 | 12831 | | |
| 64 | 70.4 | 43.7 | 65.5# |
| 63 | 37.8 | 24.0 | 36.0# |

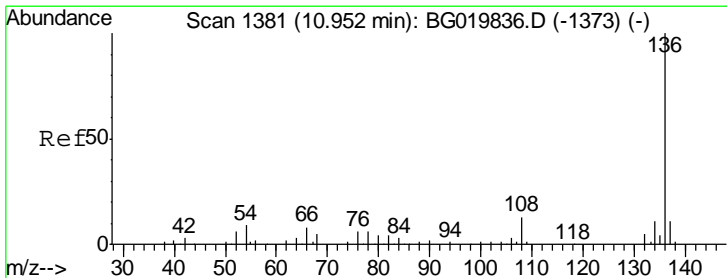
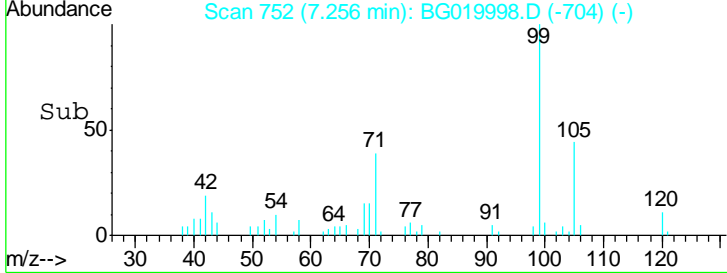
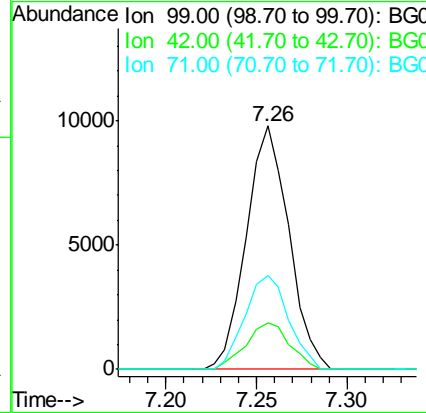
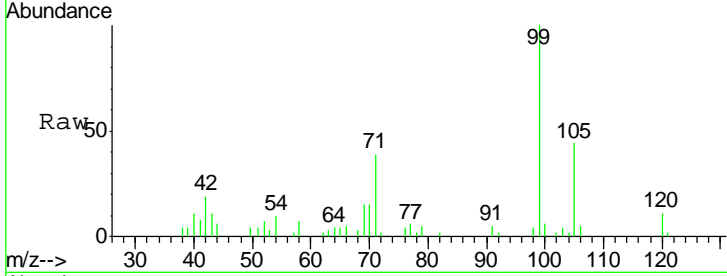




#7
 Phenol-d6
 Concen: 10.92 ng
 RT: 7.26 min Scan# 752
 Delta R.T. -0.02 min
 Lab File: BG019998.D
 Acq: 8 Dec 2015 2:03

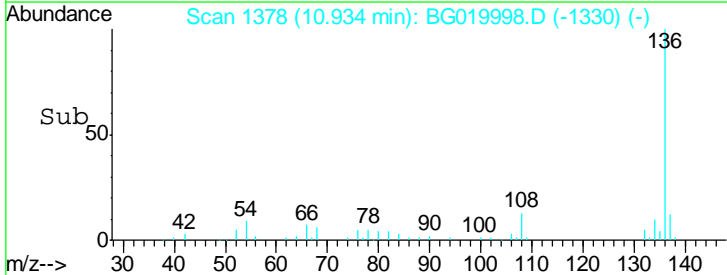
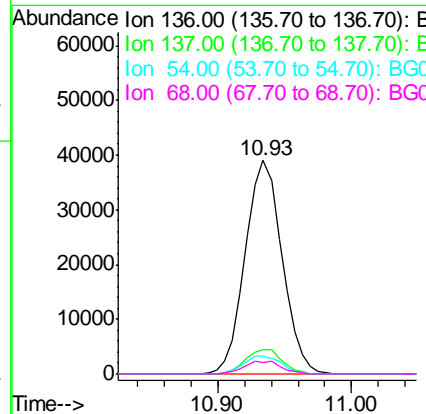
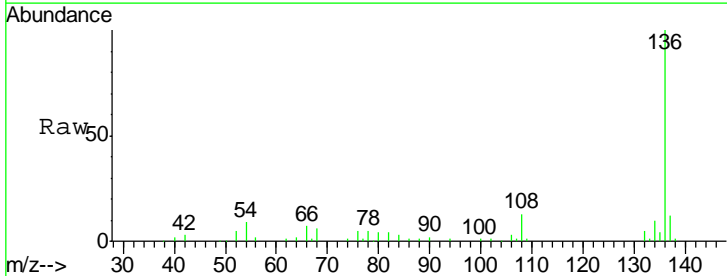
Instrument :
 BNA_G
 ClientSampled :
 MW-16

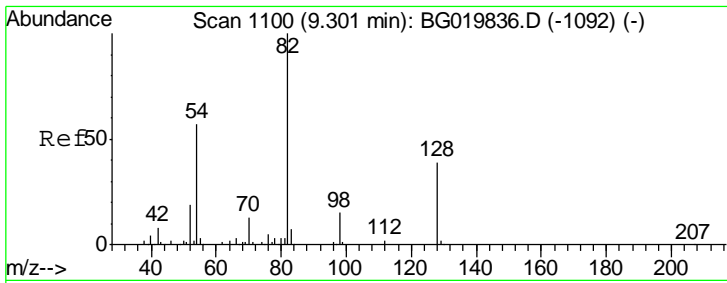
| Tgt Ion | Resp | Lower | Upper |
|---------|-------|-------|-------|
| 99 | 15933 | | |
| 42 | 18.9 | 11.5 | 17.3# |
| 71 | 38.6 | 22.6 | 34.0# |



#21
 Naphthalene-d8
 Concen: 20.00 ng
 RT: 10.93 min Scan# 1378
 Delta R.T. -0.02 min
 Lab File: BG019998.D
 Acq: 8 Dec 2015 2:03

| Tgt Ion | Resp | Lower | Upper |
|---------|-------|-------|-------|
| 136 | 74545 | | |
| 137 | 11.5 | 8.6 | 12.8 |
| 54 | 8.7 | 5.4 | 8.2# |
| 68 | 5.7 | 5.3 | 7.9 |

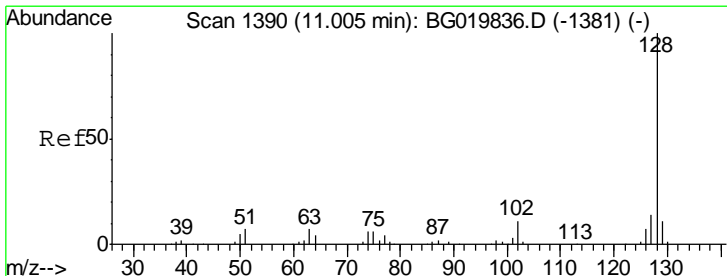
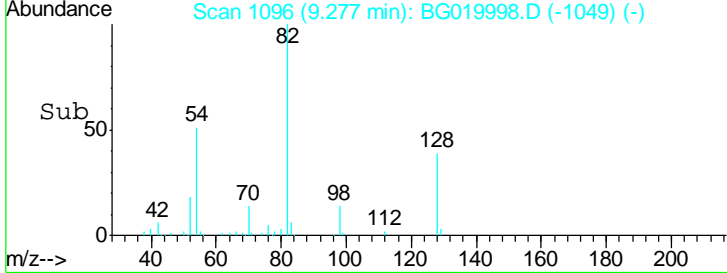
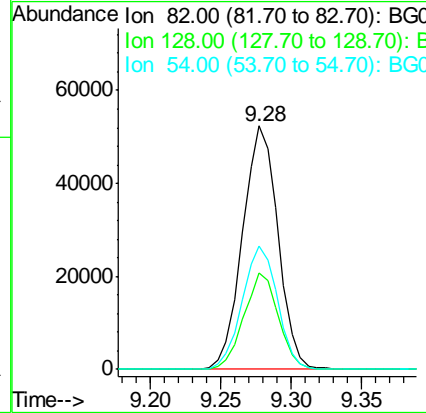
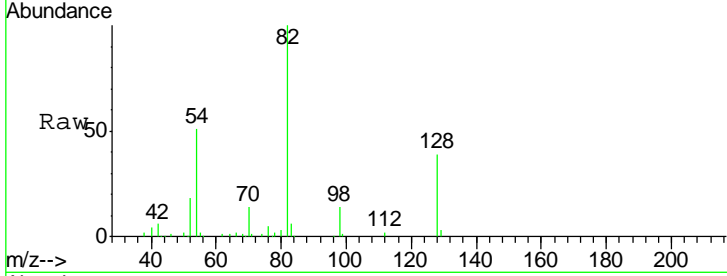




#23
 Nitrobenzene-d5
 Concen: 62.81 ng
 RT: 9.28 min Scan# 1096
 Delta R.T. -0.02 min
 Lab File: BG019998.D
 Acq: 8 Dec 2015 2:03

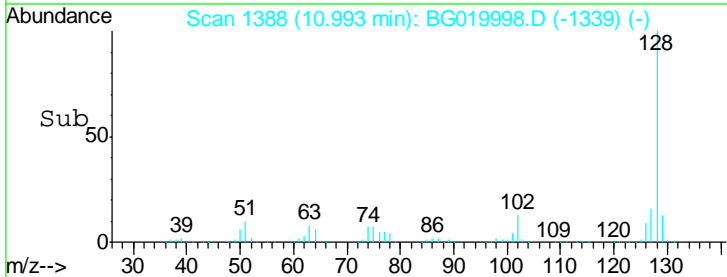
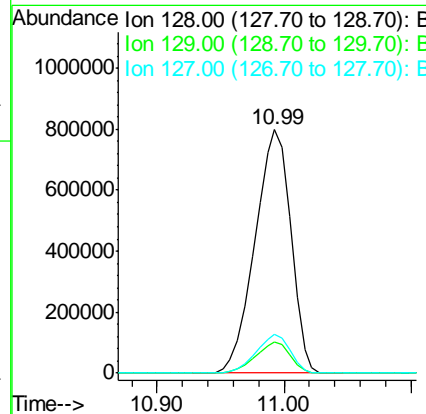
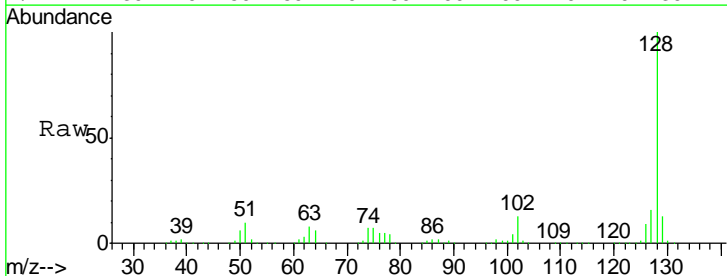
Instrument :
 BNA_G
ClientSampled :
 MW-16

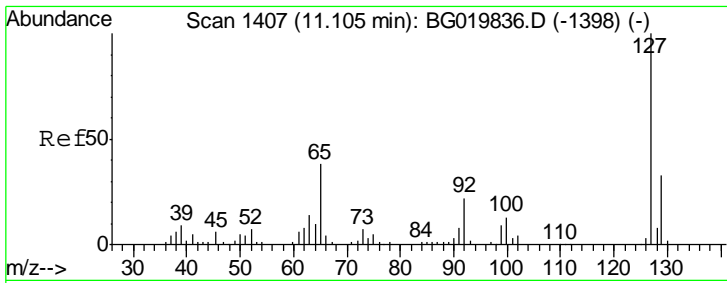
| Tgt Ion | Resp | Lower | Upper |
|---------|------|-------|-------|
| 82 | 100 | | |
| 128 | 39.4 | 36.7 | 55.1 |
| 54 | 50.5 | 33.8 | 50.8 |



#31
 Naphthalene
 Concen: 393.71 ng
 RT: 10.99 min Scan# 1388
 Delta R.T. -0.01 min
 Lab File: BG019998.D
 Acq: 8 Dec 2015 2:03

| Tgt Ion | Resp | Lower | Upper |
|---------|------|-------|-------|
| 128 | 100 | | |
| 129 | 12.9 | 8.5 | 12.7# |
| 127 | 15.7 | 10.6 | 16.0 |

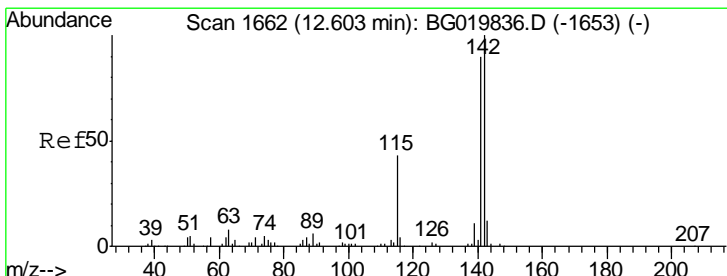
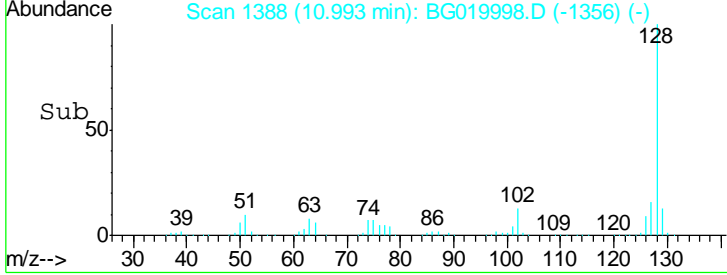
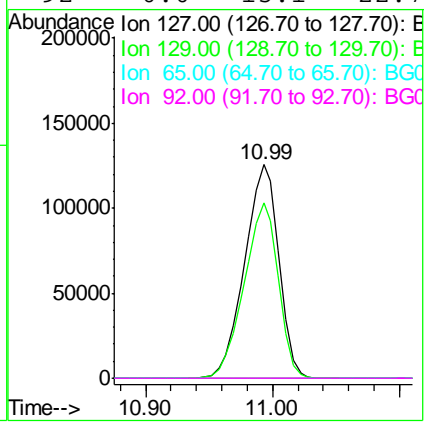
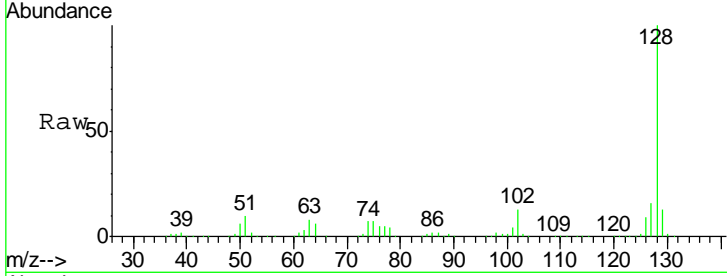




#33
 4-Chloroaniline
 Concen: 133.67 ng
 RT: 10.99 min Scan# 1388
 Delta R.T. -0.11 min
 Lab File: BG019998.D
 Acq: 8 Dec 2015 2:03

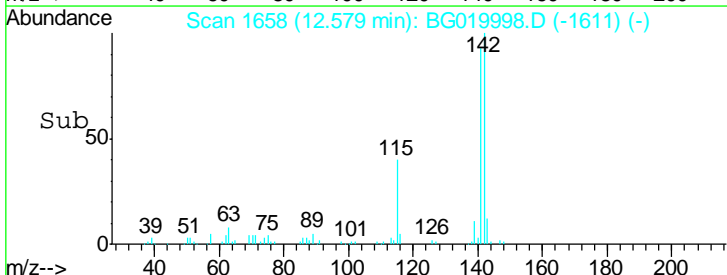
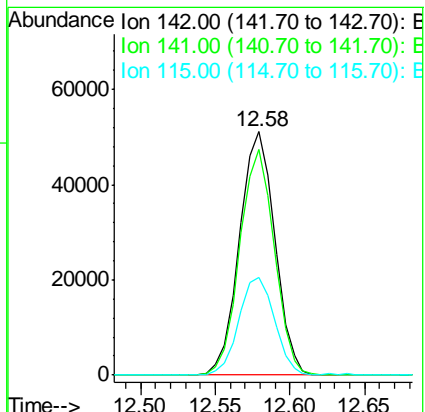
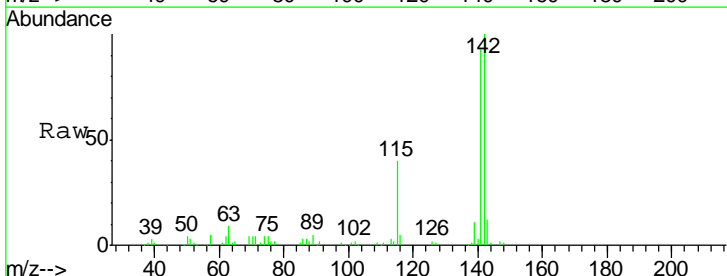
Instrument :
 BNA_G
 ClientSampled :
 MW-16

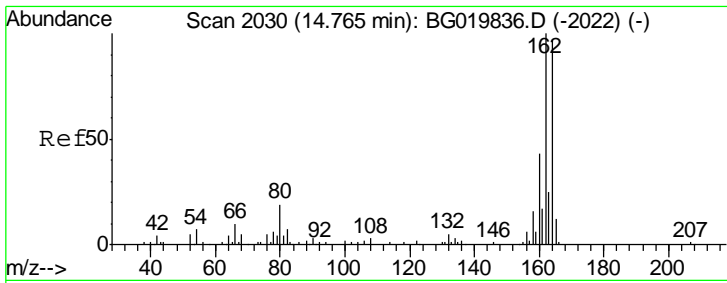
| Tgt Ion | Resp | Lower | Upper |
|---------|------|-------|-------|
| 127 | 100 | | |
| 129 | 81.9 | 24.6 | 37.0# |
| 65 | 0.0 | 22.6 | 33.8# |
| 92 | 0.0 | 15.1 | 22.7# |



#37
 2-Methylnaphthalene
 Concen: 28.74 ng
 RT: 12.58 min Scan# 1658
 Delta R.T. -0.02 min
 Lab File: BG019998.D
 Acq: 8 Dec 2015 2:03

| Tgt Ion | Resp | Lower | Upper |
|---------|------|-------|-------|
| 142 | 100 | | |
| 141 | 92.5 | 74.6 | 112.0 |
| 115 | 40.1 | 27.4 | 41.0 |

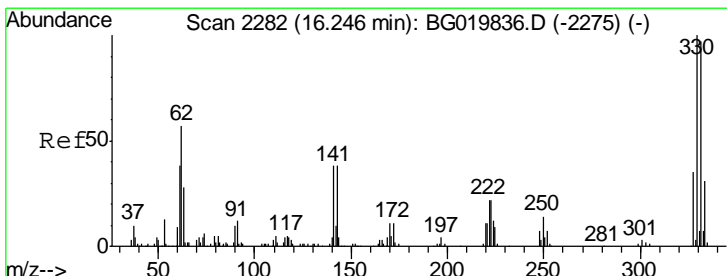
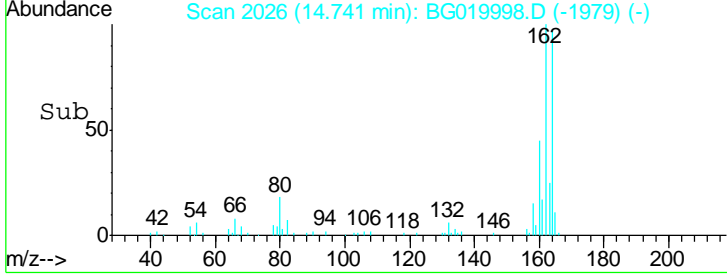
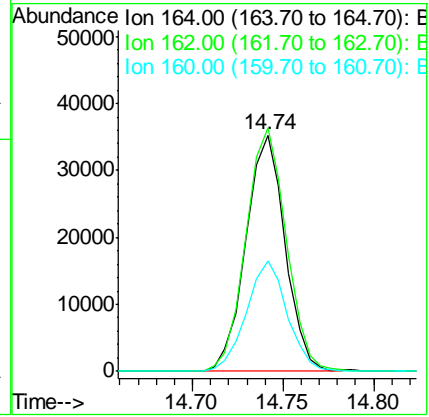
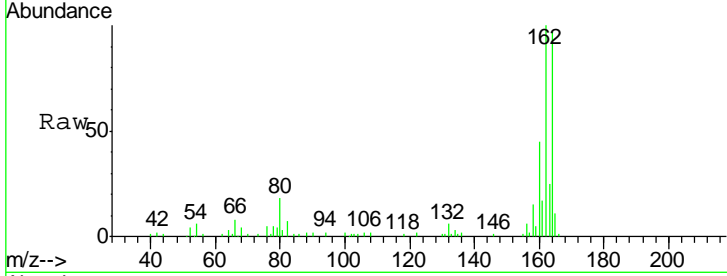




#38
 Acenaphthene-d10
 Concen: 20.00 ng
 RT: 14.74 min Scan# 2026
 Delta R.T. -0.02 min
 Lab File: BG019998.D
 Acq: 8 Dec 2015 2:03

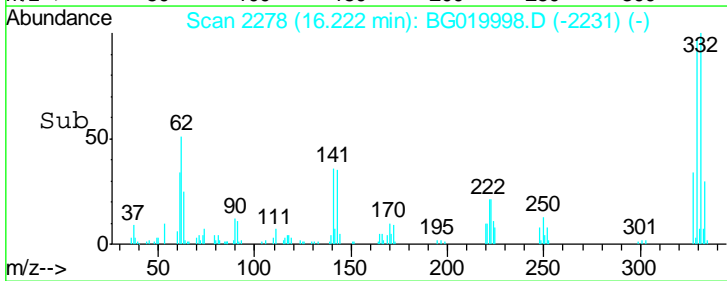
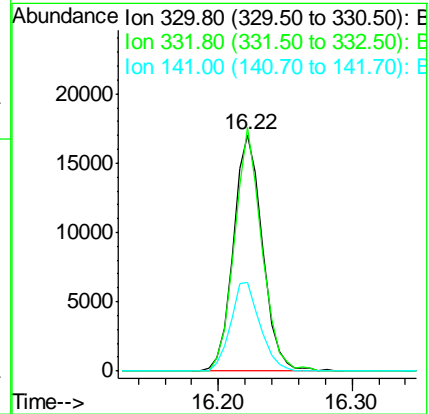
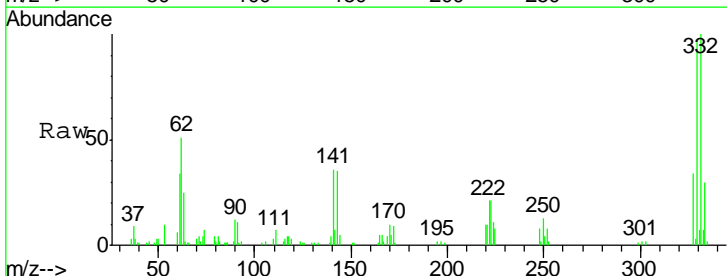
Instrument :
 BNA_G
 ClientSampled :
 MW-16

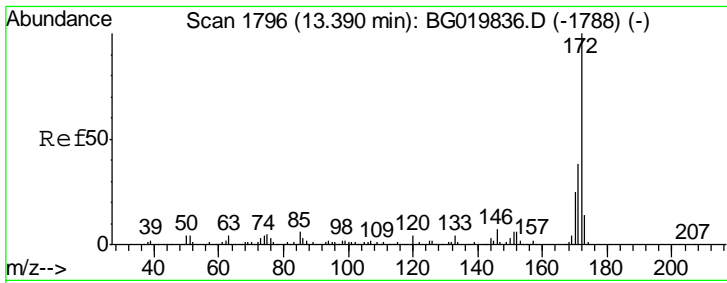
| Tgt Ion | Resp | Lower | Upper |
|---------|-------|-------|-------|
| 164 | 100 | | |
| 162 | 103.2 | 78.8 | 118.2 |
| 160 | 46.6 | 36.4 | 54.6 |



#41
 2,4,6-Tribromophenol
 Concen: 31.90 ng
 RT: 16.22 min Scan# 2278
 Delta R.T. -0.02 min
 Lab File: BG019998.D
 Acq: 8 Dec 2015 2:03

| Tgt Ion | Resp | Lower | Upper |
|---------|------|-------|-------|
| 330 | 100 | | |
| 332 | 97.3 | 78.1 | 117.1 |
| 141 | 38.0 | 28.2 | 42.2 |

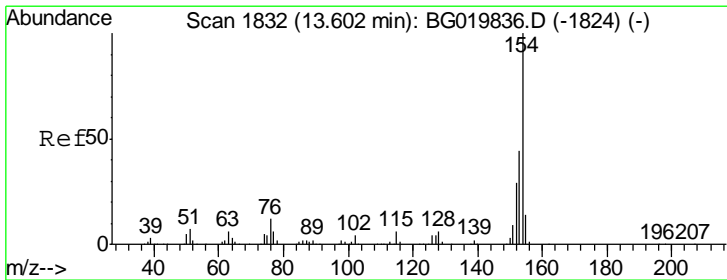
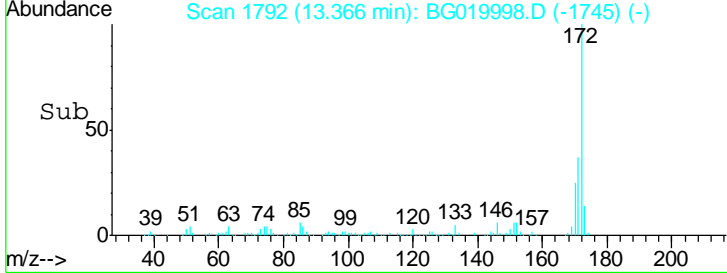
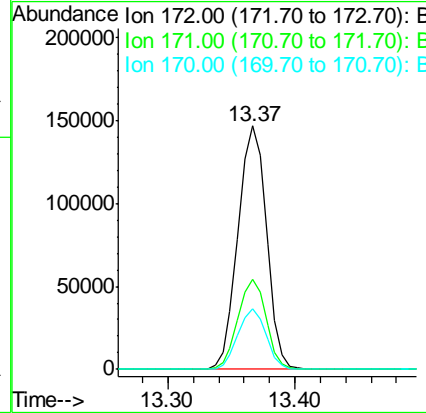
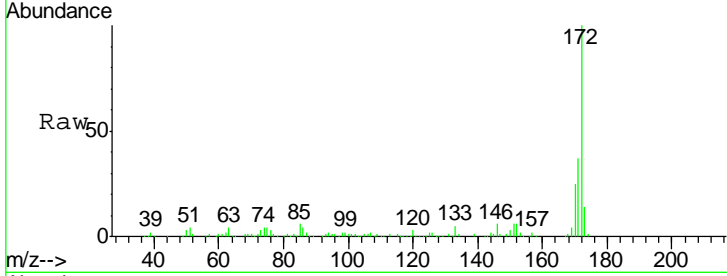




#44
 2-Fluorobiphenyl
 Concen: 58.77 ng
 RT: 13.37 min Scan# 1792
 Delta R.T. -0.02 min
 Lab File: BG019998.D
 Acq: 8 Dec 2015 2:03

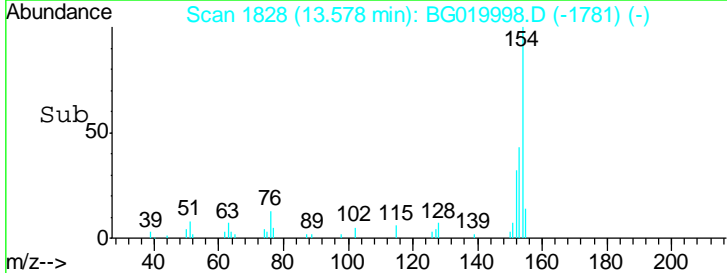
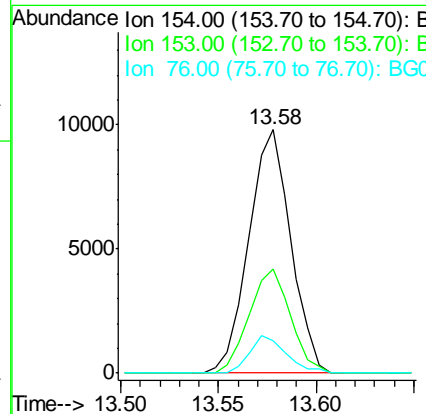
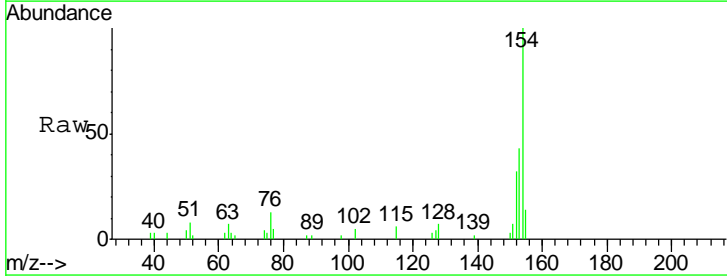
Instrument :
 BNA_G
 ClientSampled :
 MW-16

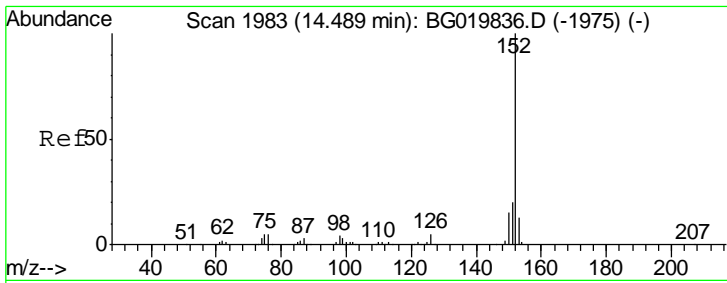
| Tgt Ion | Resp | Lower | Upper |
|---------|------|-------|-------|
| 172 | 100 | | |
| 171 | 37.2 | 29.0 | 43.6 |
| 170 | 24.7 | 19.9 | 29.9 |



#45
 1,1'-Biphenyl
 Concen: 3.36 ng
 RT: 13.58 min Scan# 1828
 Delta R.T. -0.02 min
 Lab File: BG019998.D
 Acq: 8 Dec 2015 2:03

| Tgt Ion | Resp | Lower | Upper |
|---------|------|-------|-------|
| 154 | 100 | | |
| 153 | 43.0 | 21.9 | 61.9 |
| 76 | 13.5 | 0.0 | 33.2 |

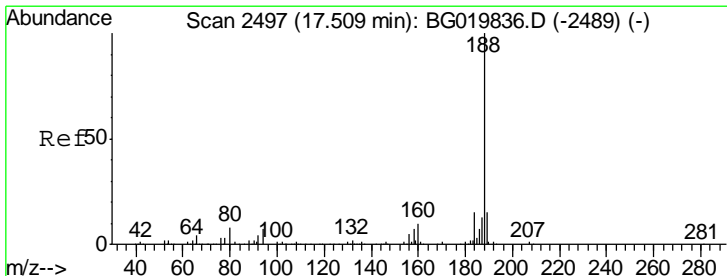
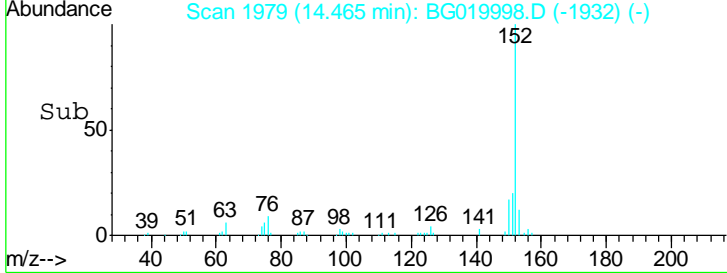
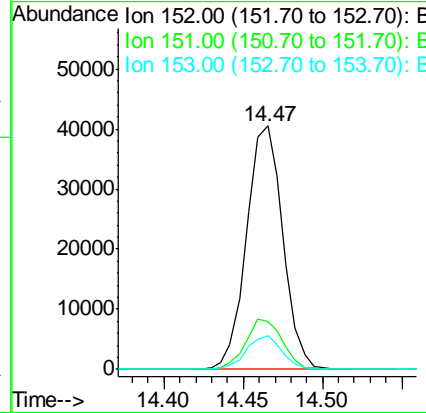
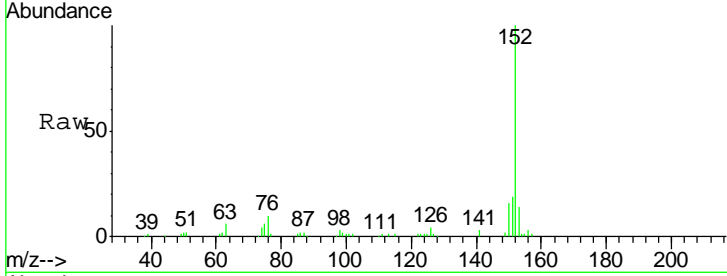




#48
 Acenaphthylene
 Concen: 11.27 ng
 RT: 14.47 min Scan# 1979
 Delta R.T. -0.02 min
 Lab File: BG019998.D
 Acq: 8 Dec 2015 2:03

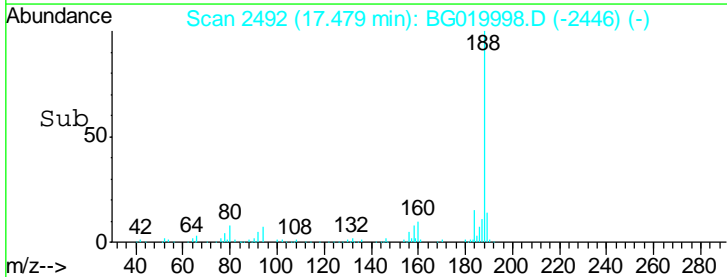
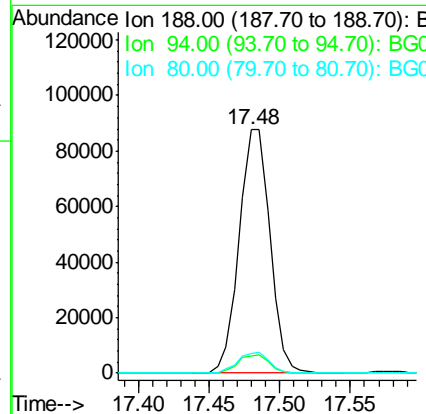
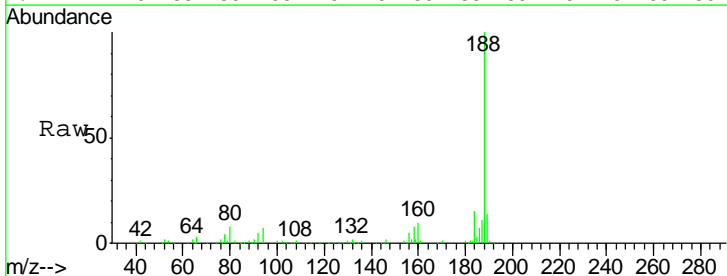
Instrument :
 BNA_G
 ClientSampled :
 MW-16

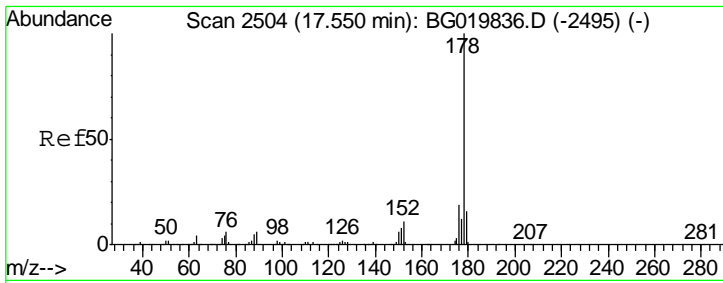
| Tgt Ion | Resp | Lower | Upper |
|---------|-------|-------|-------|
| 152 | 64232 | | |
| 151 | 19.5 | 17.0 | 25.4 |
| 153 | 13.7 | 10.4 | 15.6 |



#63
 Phenanthrene-d10
 Concen: 20.00 ng
 RT: 17.48 min Scan# 2492
 Delta R.T. -0.03 min
 Lab File: BG019998.D
 Acq: 8 Dec 2015 2:03

| Tgt Ion | Resp | Lower | Upper |
|---------|--------|-------|-------|
| 188 | 134068 | | |
| 94 | 7.1 | 7.7 | 11.5# |
| 80 | 8.1 | 7.8 | 11.8 |

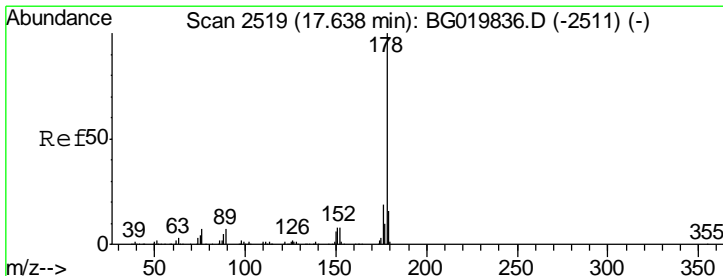
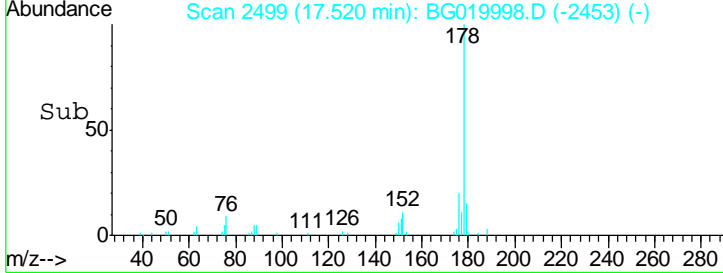
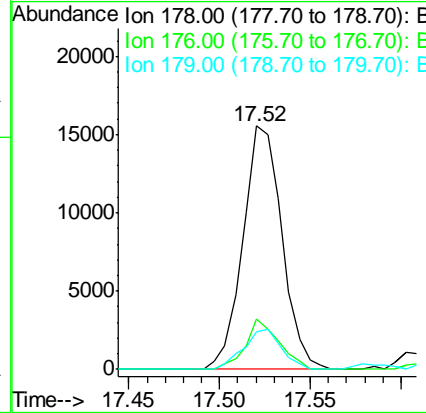
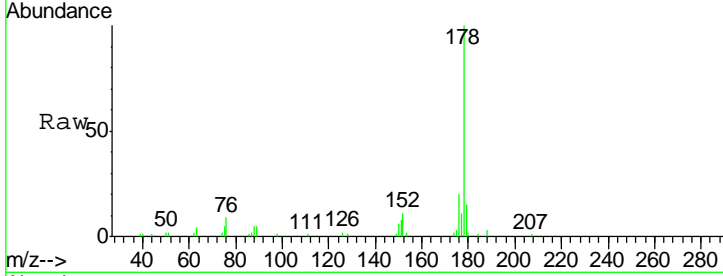




#70
 Phenanthrene
 Concen: 3.06 ng
 RT: 17.52 min Scan# 2499
 Delta R.T. -0.03 min
 Lab File: BG019998.D
 Acq: 8 Dec 2015 2:03

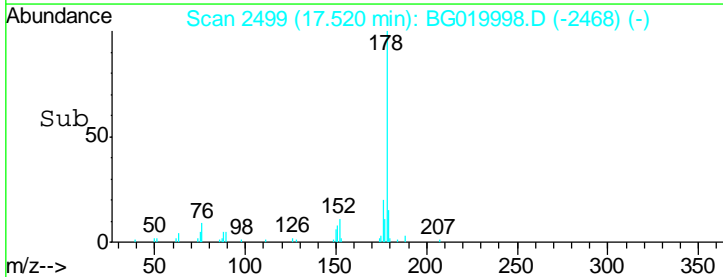
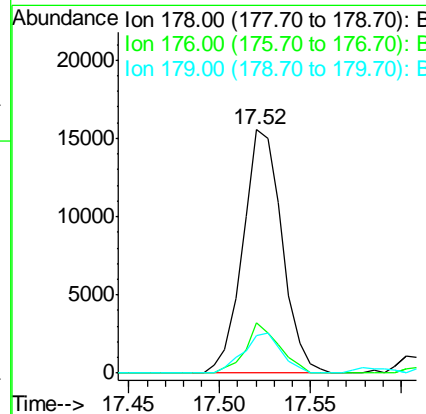
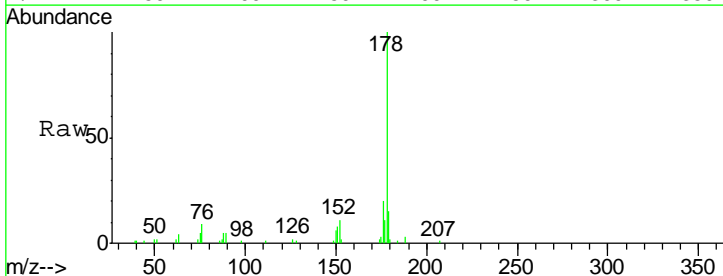
Instrument :
 BNA_G
 ClientSampled :
 MW-16

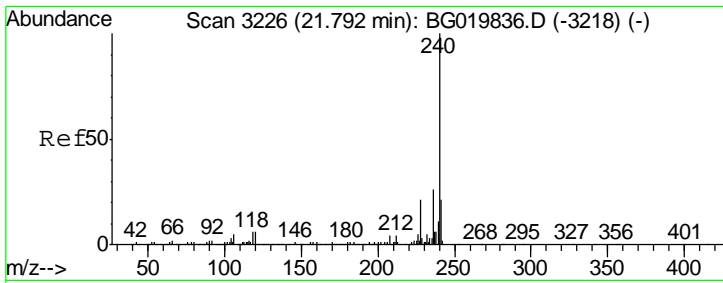
| Tgt Ion | Resp | Lower | Upper |
|---------|-------|-------|-------|
| 178 | 23210 | | |
| 176 | 20.4 | 16.7 | 25.1 |
| 179 | 15.3 | 13.9 | 20.9 |



#71
 Anthracene
 Concen: 3.00 ng
 RT: 17.52 min Scan# 2499
 Delta R.T. -0.12 min
 Lab File: BG019998.D
 Acq: 8 Dec 2015 2:03

| Tgt Ion | Resp | Lower | Upper |
|---------|-------|-------|-------|
| 178 | 23210 | | |
| 176 | 20.4 | 16.8 | 25.2 |
| 179 | 15.3 | 13.9 | 20.9 |

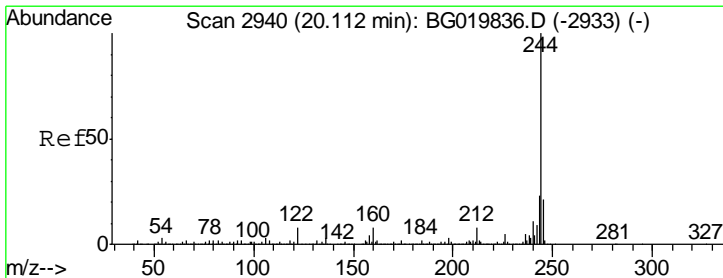
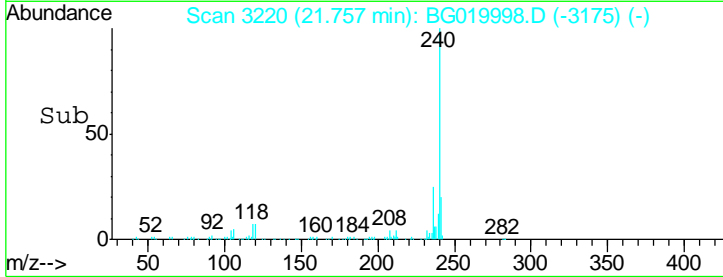
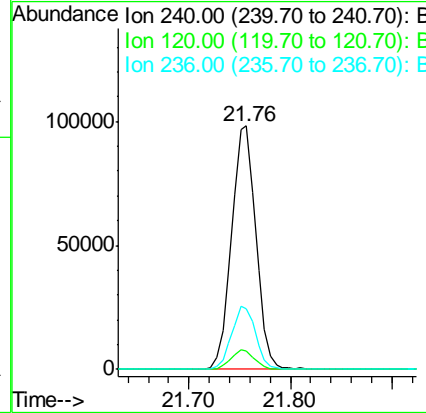
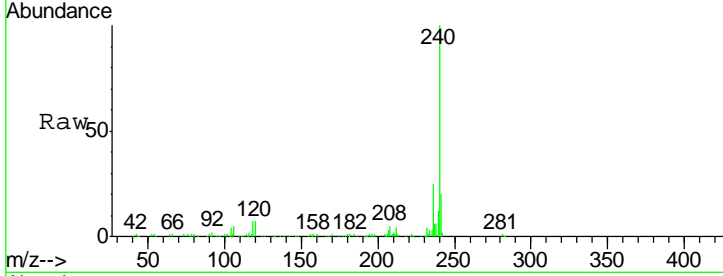




#75
 Chrysene-d12
 Concen: 20.00 ng
 RT: 21.76 min Scan# 3220
 Delta R.T. -0.04 min
 Lab File: BG019998.D
 Acq: 8 Dec 2015 2:03

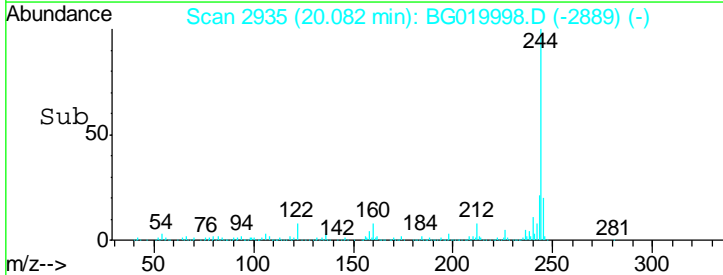
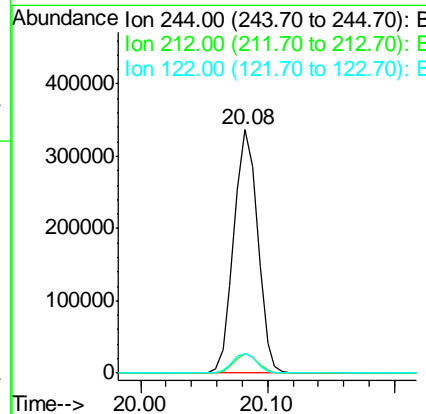
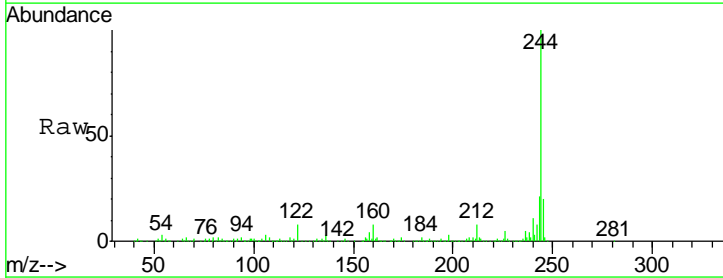
Instrument :
 BNA_G
 ClientSampleID :
 MW-16

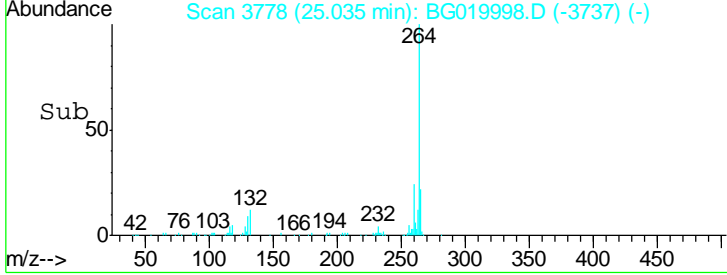
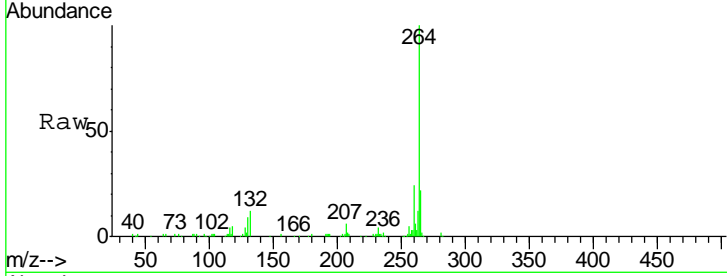
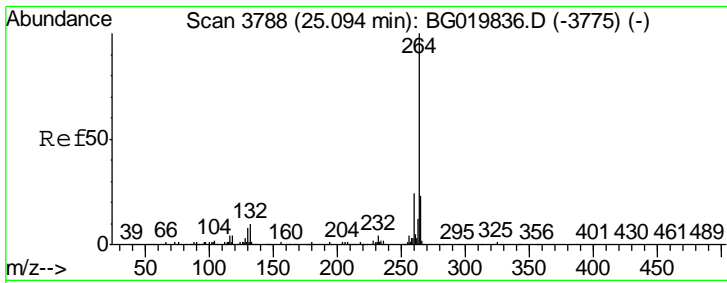
| Tgt Ion | Resp | Lower | Upper |
|---------|--------|-------|-------|
| 240 | 163331 | | |
| 120 | 7.4 | 7.4 | 11.0 |
| 236 | 24.9 | 20.7 | 31.1 |



#78
 Terphenyl-d14
 Concen: 65.40 ng
 RT: 20.08 min Scan# 2935
 Delta R.T. -0.03 min
 Lab File: BG019998.D
 Acq: 8 Dec 2015 2:03

| Tgt Ion | Resp | Lower | Upper |
|---------|--------|-------|-------|
| 244 | 437905 | | |
| 212 | 8.0 | 6.9 | 10.3 |
| 122 | 8.1 | 10.2 | 15.2# |





#86
 Perylene-d12
 Concen: 20.00 ng
 RT: 25.04 min Scan# 3778
 Delta R.T. -0.06 min
 Lab File: BG019998.D
 Acq: 8 Dec 2015 2:03

Instrument :
 BNA_G
 ClientSampleId :
 MW-16

Tgt Ion: 264 Resp: 151268

| Ion | Ratio | Lower | Upper |
|-----|-------|-------|-------|
| 264 | 100 | | |
| 260 | 23.7 | 18.5 | 27.7 |
| 265 | 22.0 | 17.2 | 25.8 |

