

Data Path : Z:\HPCHEM1\BNA G\DATA\BG120715\
 Data File : BG019994.D
 Acq On : 7 Dec 2015 23:28
 Operator : UM/NP
 Sample : G4676-05
 Misc :
 ALS Vial : 17 Sample Multiplier: 1

Instrument :
 BNA_G
 ClientSampleId :
 MW-6

Quant Time: Dec 08 00:46:45 2015
 Quant Method : Z:\HPCHEM1\BNA G\METHODS\8270-BG120215.M
 Quant Title : ASP BNA STANDARDS FOR 5 POINT CALIBRATION
 QLast Update : Wed Dec 02 18:50:01 2015
 Response via : Initial Calibration

Internal Standards	R.T.	QIon	Response	Conc	Units	Dev(Min)
1) 1,4-Dichlorobenzene-d4	8.11	152	16263	20.00	ng	-0.03
21) Naphthalene-d8	10.93	136	71076	20.00	ng	-0.02
38) Acenaphthene-d10	14.74	164	49823	20.00	ng	-0.02
63) Phenanthrene-d10	17.48	188	121779	20.00	ng	-0.03
75) Chrysene-d12	21.75	240	150483	20.00	ng	-0.04
86) Perylene-d12	25.04	264	139743	20.00	ng	-0.06
System Monitoring Compounds						
5) 2-Fluorophenol	5.66	112	70634	78.50	ng	-0.01
7) Phenol-d6	7.26	99	67528	49.70	ng	-0.02
23) Nitrobenzene-d5	9.28	82	143848	103.29	ng	-0.02
41) 2,4,6-Tribromophenol	16.22	330	102502	134.46	ng	-0.02
44) 2-Fluorobiphenyl	13.37	172	344036	94.28	ng	-0.02
78) Terphenyl-d14	20.08	244	551553	89.40	ng	-0.03

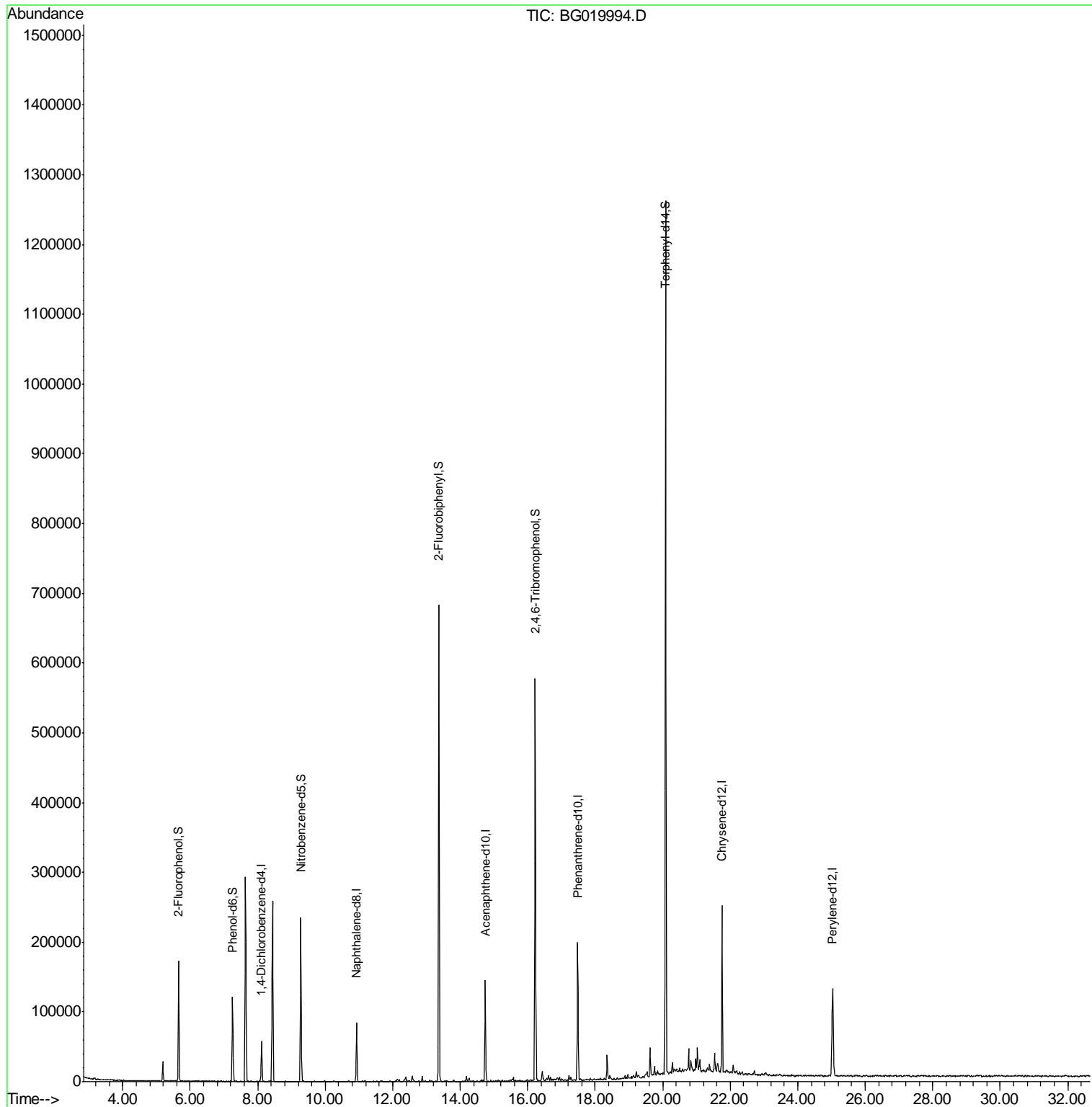
Target Compounds Qvalue

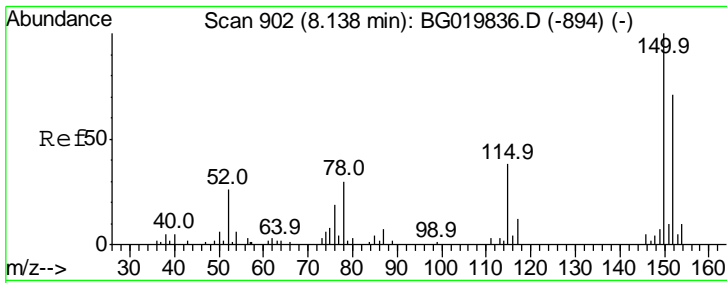
(#) = qualifier out of range (m) = manual integration (+) = signals summed

Data Path : Z:\HPCHEM1\BNA G\DATA\BG120715\
 Data File : BG019994.D
 Acq On : 7 Dec 2015 23:28
 Operator : UM/NP
 Sample : G4676-05
 Misc :
 ALS Vial : 17 Sample Multiplier: 1

Instrument :
 BNA_G
 ClientSampleId :
 MW-6

Quant Time: Dec 08 00:46:45 2015
 Quant Method : Z:\HPCHEM1\BNA G\METHODS\8270-BG120215.M
 Quant Title : ASP BNA STANDARDS FOR 5 POINT CALIBRATION
 QLast Update : Wed Dec 02 18:50:01 2015
 Response via : Initial Calibration

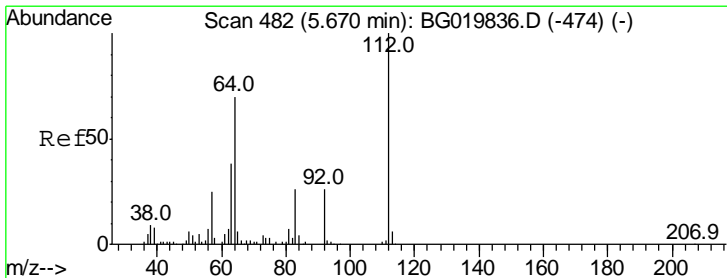
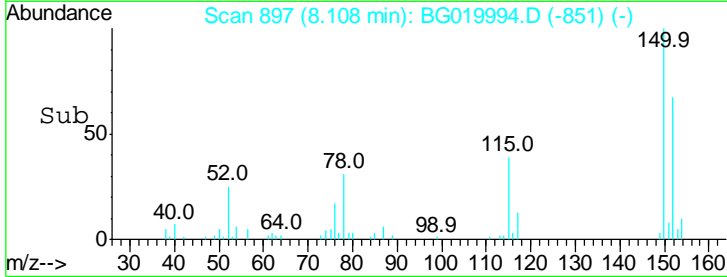
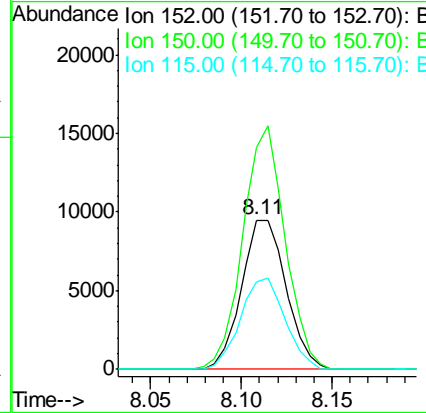
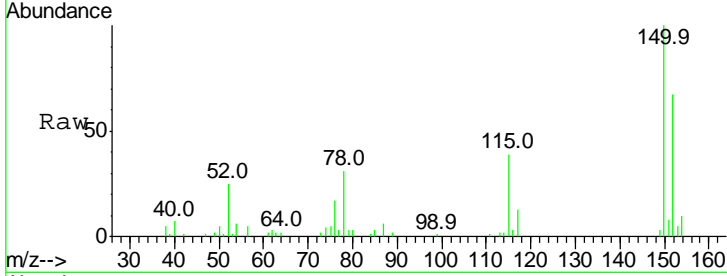




#1
 1,4-Dichlorobenzene-d4
 Concen: 20.00 ng
 RT: 8.11 min Scan# 897
 Delta R.T. -0.03 min
 Lab File: BG019994.D
 Acq: 7 Dec 2015 23:28

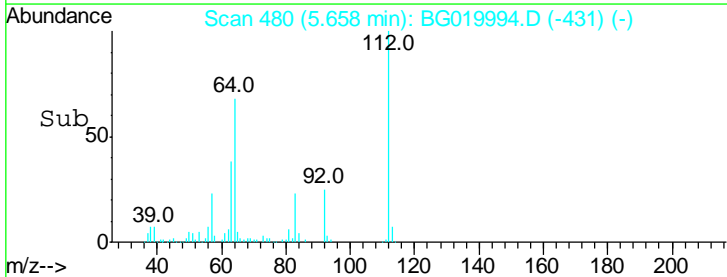
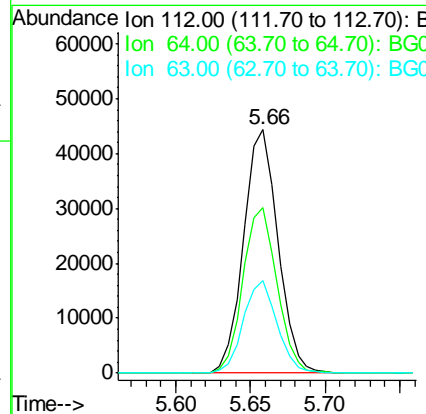
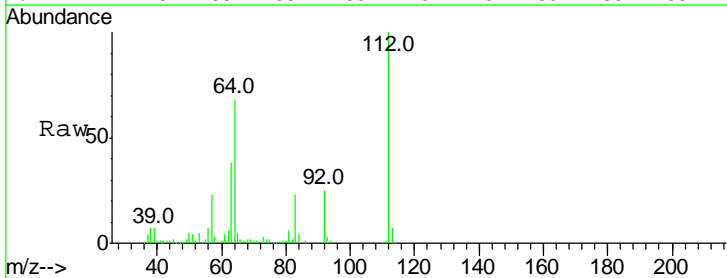
Instrument :
 BNA_G
 ClientSampleID :
 MW-6

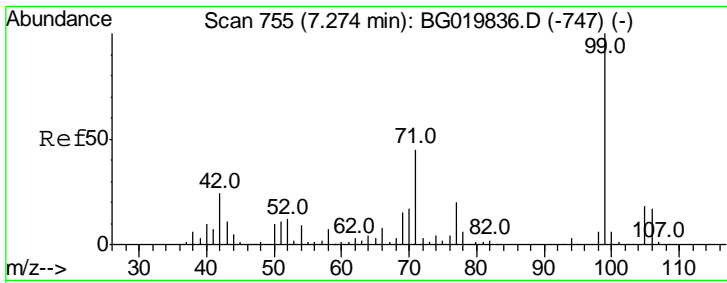
Tgt Ion	Resp	Lower	Upper
152	16263		
150	148.5	115.0	172.4
115	58.2	43.9	65.9



#5
 2-Fluorophenol
 Concen: 78.50 ng
 RT: 5.66 min Scan# 480
 Delta R.T. -0.01 min
 Lab File: BG019994.D
 Acq: 7 Dec 2015 23:28

Tgt Ion	Resp	Lower	Upper
112	70634		
64	67.8	43.7	65.5#
63	37.8	24.0	36.0#

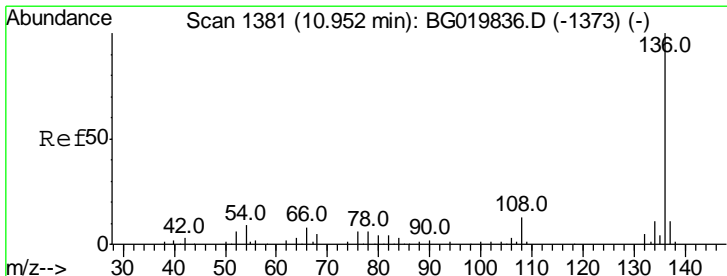
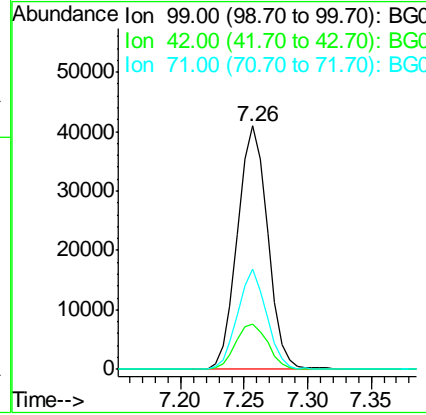
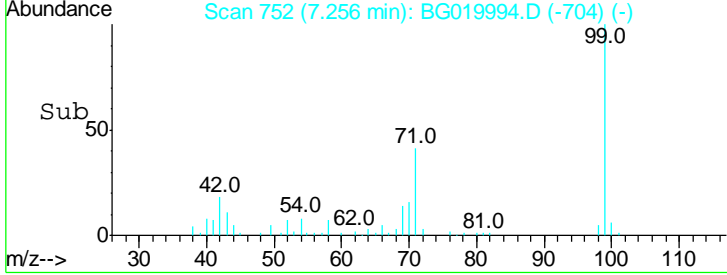
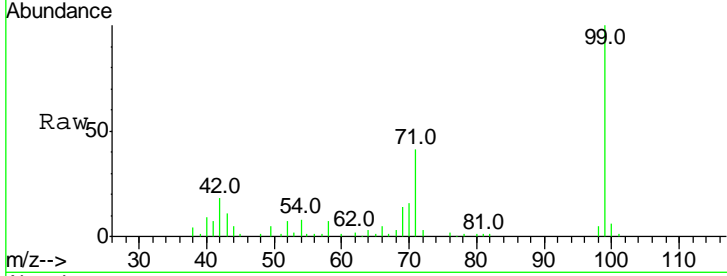




#7
 Phenol-d6
 Concen: 49.70 ng
 RT: 7.26 min Scan# 752
 Delta R.T. -0.02 min
 Lab File: BG019994.D
 Acq: 7 Dec 2015 23:28

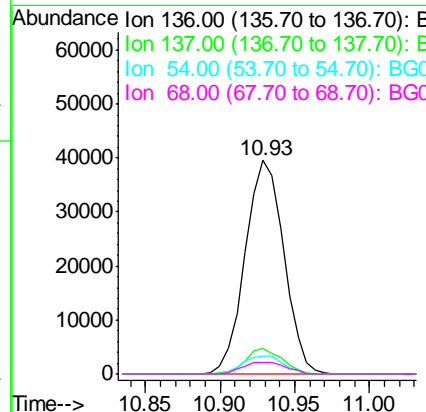
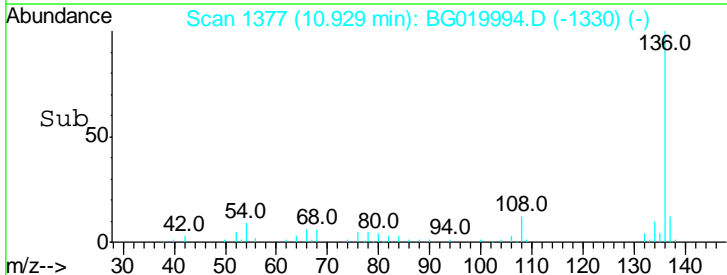
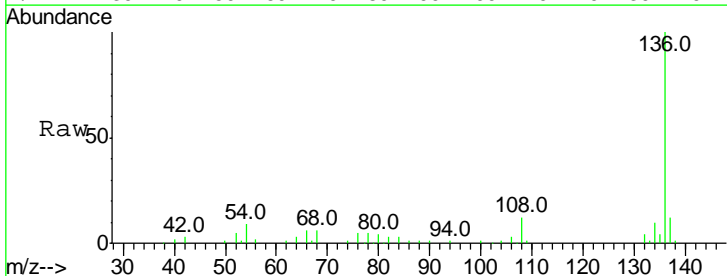
Instrument :
 BNA_G
 ClientSampled :
 MW-6

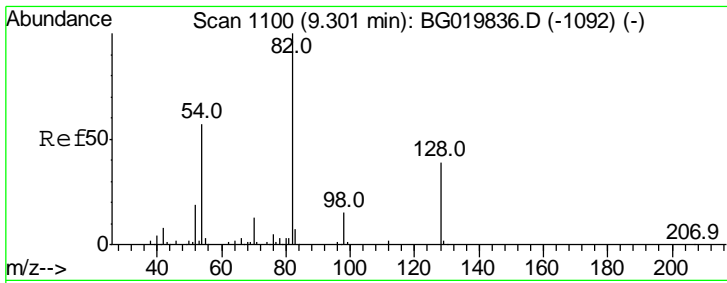
Tgt Ion	Resp	Lower	Upper
99	67528		
99	100		
42	18.4	11.5	17.3#
71	41.1	22.6	34.0#



#21
 Naphthalene-d8
 Concen: 20.00 ng
 RT: 10.93 min Scan# 1377
 Delta R.T. -0.02 min
 Lab File: BG019994.D
 Acq: 7 Dec 2015 23:28

Tgt Ion	Resp	Lower	Upper
136	71076		
136	100		
137	12.1	8.6	12.8
54	8.6	5.4	8.2#
68	5.6	5.3	7.9

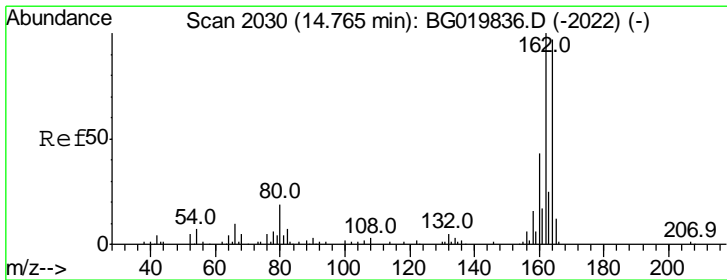
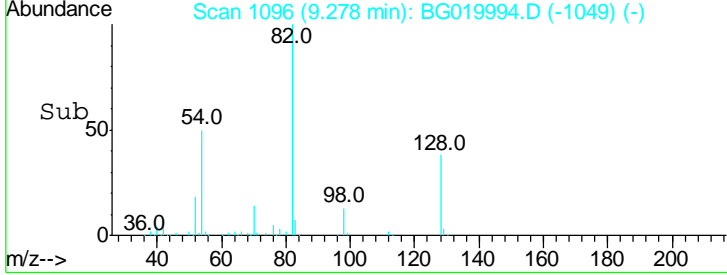
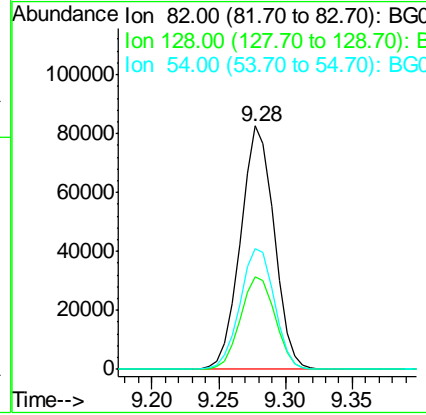
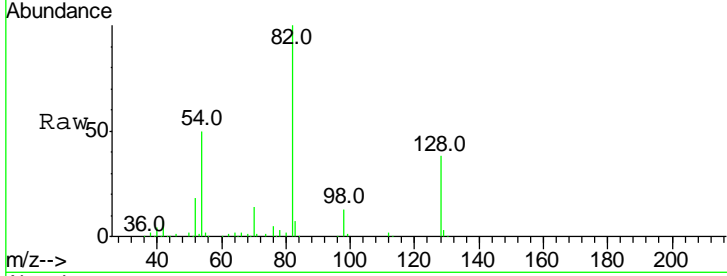




#23
 Nitrobenzene-d5
 Concen: 103.29 ng
 RT: 9.28 min Scan# 1096
 Delta R.T. -0.02 min
 Lab File: BG019994.D
 Acq: 7 Dec 2015 23:28

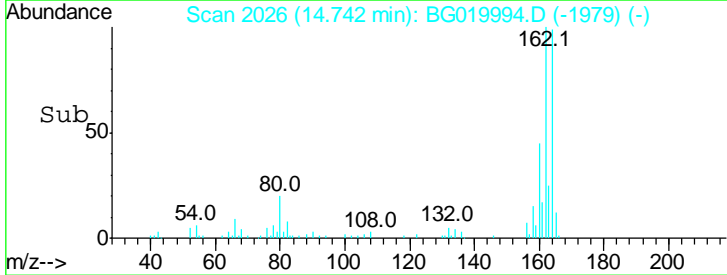
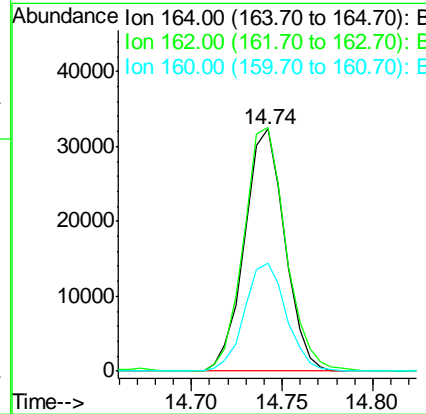
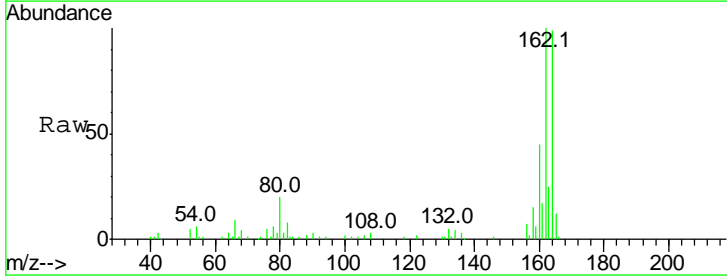
Instrument :
 BNA_G
ClientSampled :
 MW-6

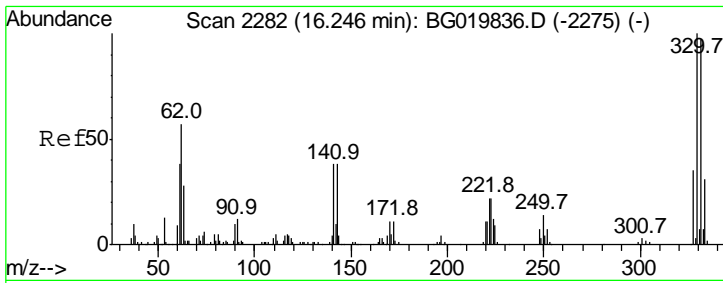
Tgt Ion	Resp	Lower	Upper
82	100		
128	38.2	36.7	55.1
54	49.8	33.8	50.8



#38
 Acenaphthene-d10
 Concen: 20.00 ng
 RT: 14.74 min Scan# 2026
 Delta R.T. -0.02 min
 Lab File: BG019994.D
 Acq: 7 Dec 2015 23:28

Tgt Ion	Resp	Lower	Upper
164	100		
162	100.6	78.8	118.2
160	44.8	36.4	54.6

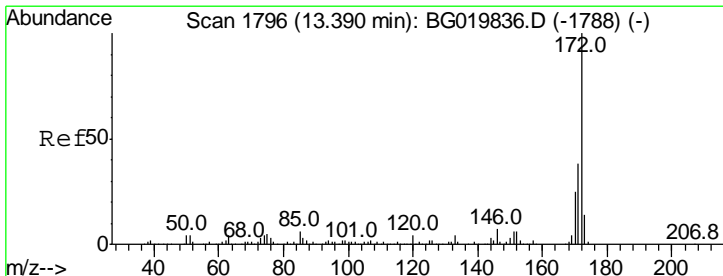
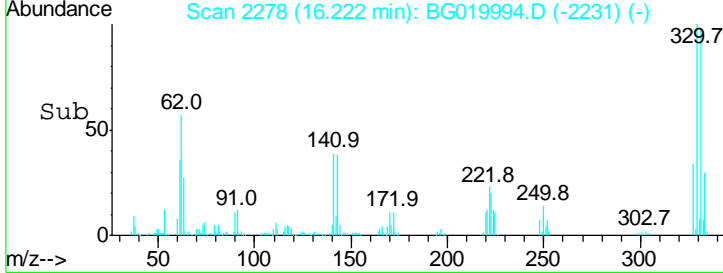
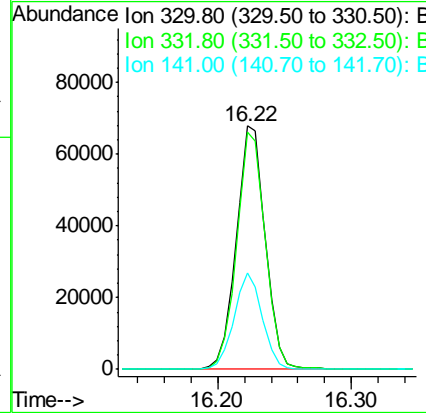
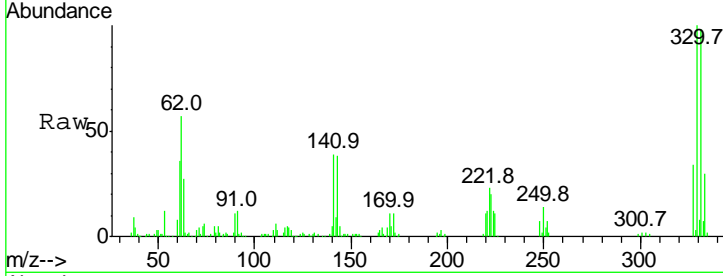




#41
 2,4,6-Tribromophenol
 Concen: 134.46 ng
 RT: 16.22 min Scan# 2278
 Delta R.T. -0.02 min
 Lab File: BG019994.D
 Acq: 7 Dec 2015 23:28

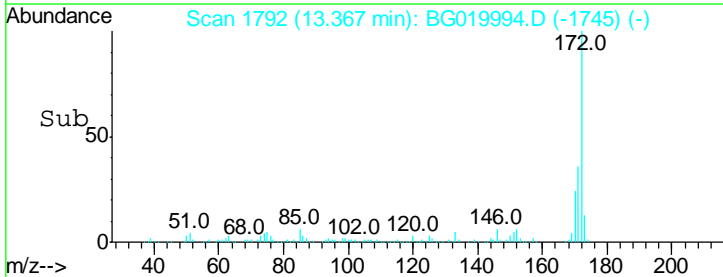
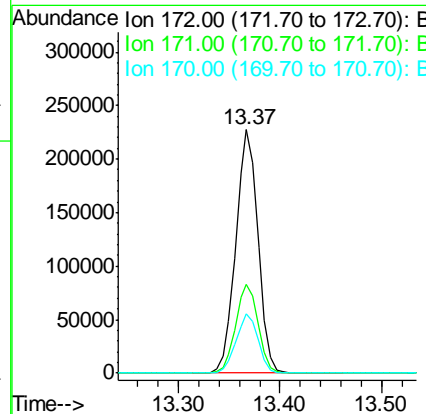
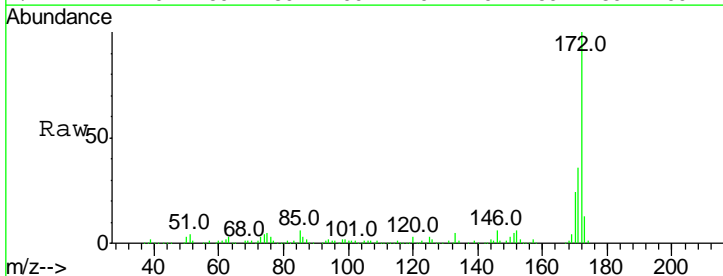
Instrument :
 BNA_G
 ClientSampled :
 MW-6

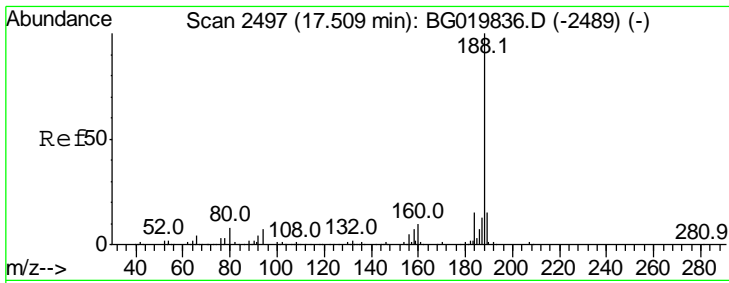
Tgt Ion	Resp	Lower	Upper
330	100		
332	96.7	78.1	117.1
141	38.9	28.2	42.2



#44
 2-Fluorobiphenyl
 Concen: 94.28 ng
 RT: 13.37 min Scan# 1792
 Delta R.T. -0.02 min
 Lab File: BG019994.D
 Acq: 7 Dec 2015 23:28

Tgt Ion	Resp	Lower	Upper
172	100		
171	36.2	29.0	43.6
170	24.3	19.9	29.9

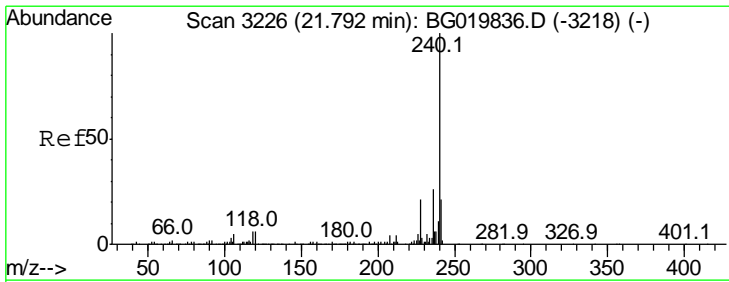
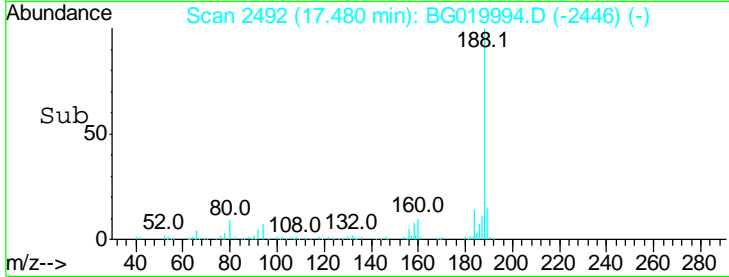
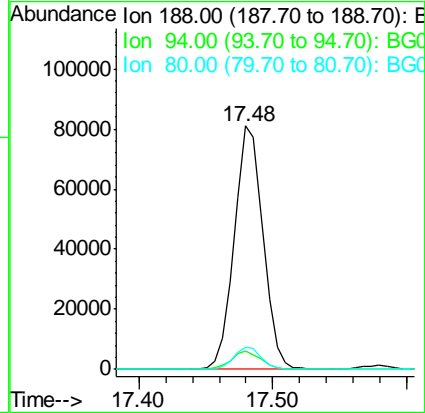
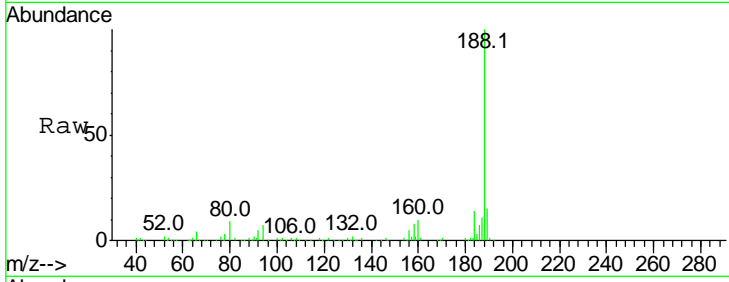




#63
 Phenanthrene-d10
 Concen: 20.00 ng
 RT: 17.48 min Scan# 2492
 Delta R.T. -0.03 min
 Lab File: BG019994.D
 Acq: 7 Dec 2015 23:28

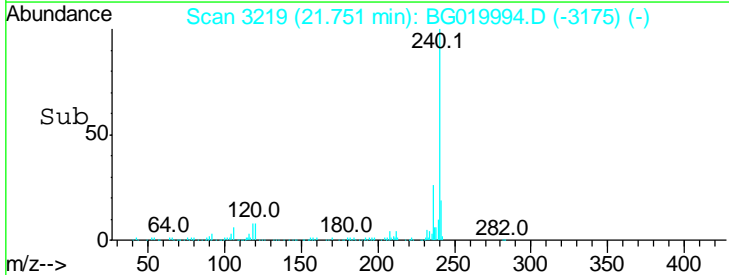
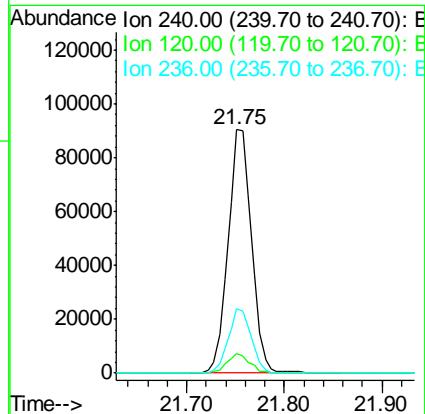
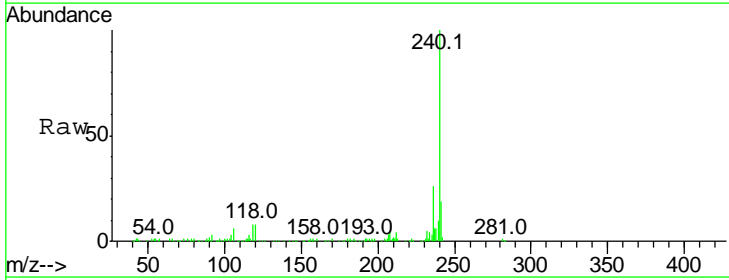
Instrument :
 BNA_G
 ClientSampled :
 MW-6

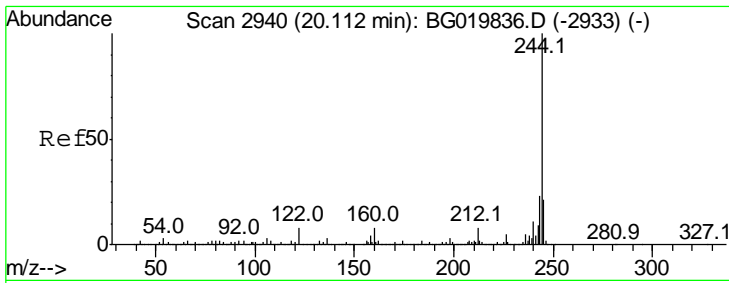
Tgt Ion	Resp	Lower	Upper
188	100		
94	7.5	7.7	11.5#
80	8.9	7.8	11.8



#75
 Chrysene-d12
 Concen: 20.00 ng
 RT: 21.75 min Scan# 3219
 Delta R.T. -0.04 min
 Lab File: BG019994.D
 Acq: 7 Dec 2015 23:28

Tgt Ion	Resp	Lower	Upper
240	100		
120	7.8	7.4	11.0
236	26.3	20.7	31.1

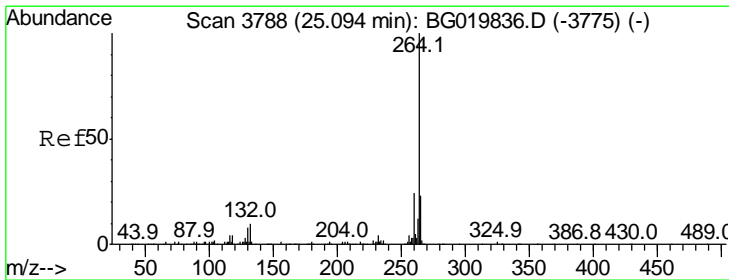
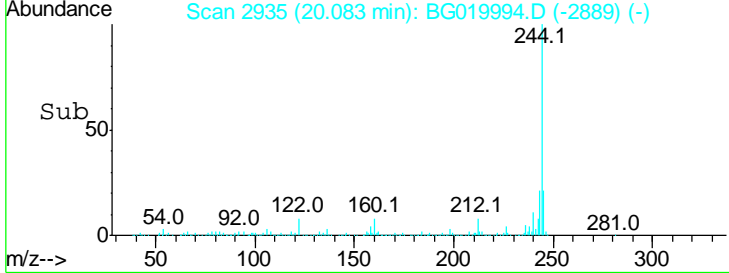
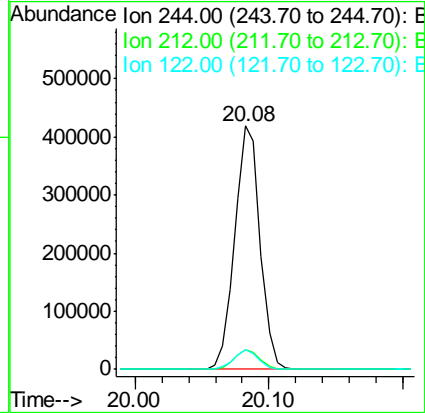
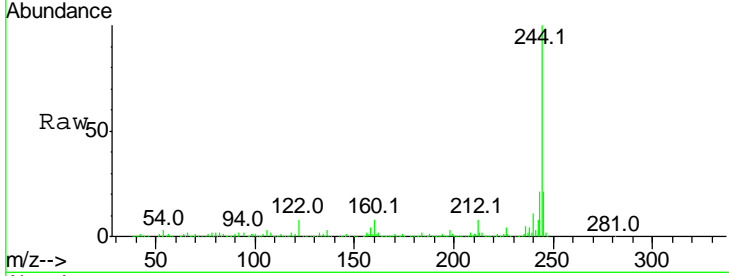




#78
 Terphenyl-d14
 Concen: 89.40 ng
 RT: 20.08 min Scan# 2935
 Delta R.T. -0.03 min
 Lab File: BG019994.D
 Acq: 7 Dec 2015 23:28

Instrument :
 BNA_G
 ClientSampled :
 MW-6

Tgt Ion	Ratio	Lower	Upper
244	100		
212	8.2	6.9	10.3
122	8.2	10.2	15.2#



#86
 Perylene-d12
 Concen: 20.00 ng
 RT: 25.04 min Scan# 3778
 Delta R.T. -0.06 min
 Lab File: BG019994.D
 Acq: 7 Dec 2015 23:28

Tgt Ion	Ratio	Lower	Upper
264	100		
260	24.4	18.5	27.7
265	21.8	17.2	25.8

