

Data Path : Z:\HPCHEM1\BNA\_G\DATA\BG121015\  
 Data File : BG020045.D  
 Acq On : 9 Dec 2015 16:02  
 Operator : UM/SJ  
 Sample : G4556-10  
 Misc :  
 ALS Vial : 15 Sample Multiplier: 1

Instrument :  
 BNA\_G  
 ClientSampleId :  
 ELP-1

Quant Time: Dec 10 00:46:54 2015  
 Quant Method : Z:\HPCHEM1\BNA\_G\METHODS\8270-BG120215.M  
 Quant Title : ASP BNA STANDARDS FOR 5 POINT CALIBRATION  
 QLast Update : Wed Dec 02 18:50:01 2015  
 Response via : Initial Calibration

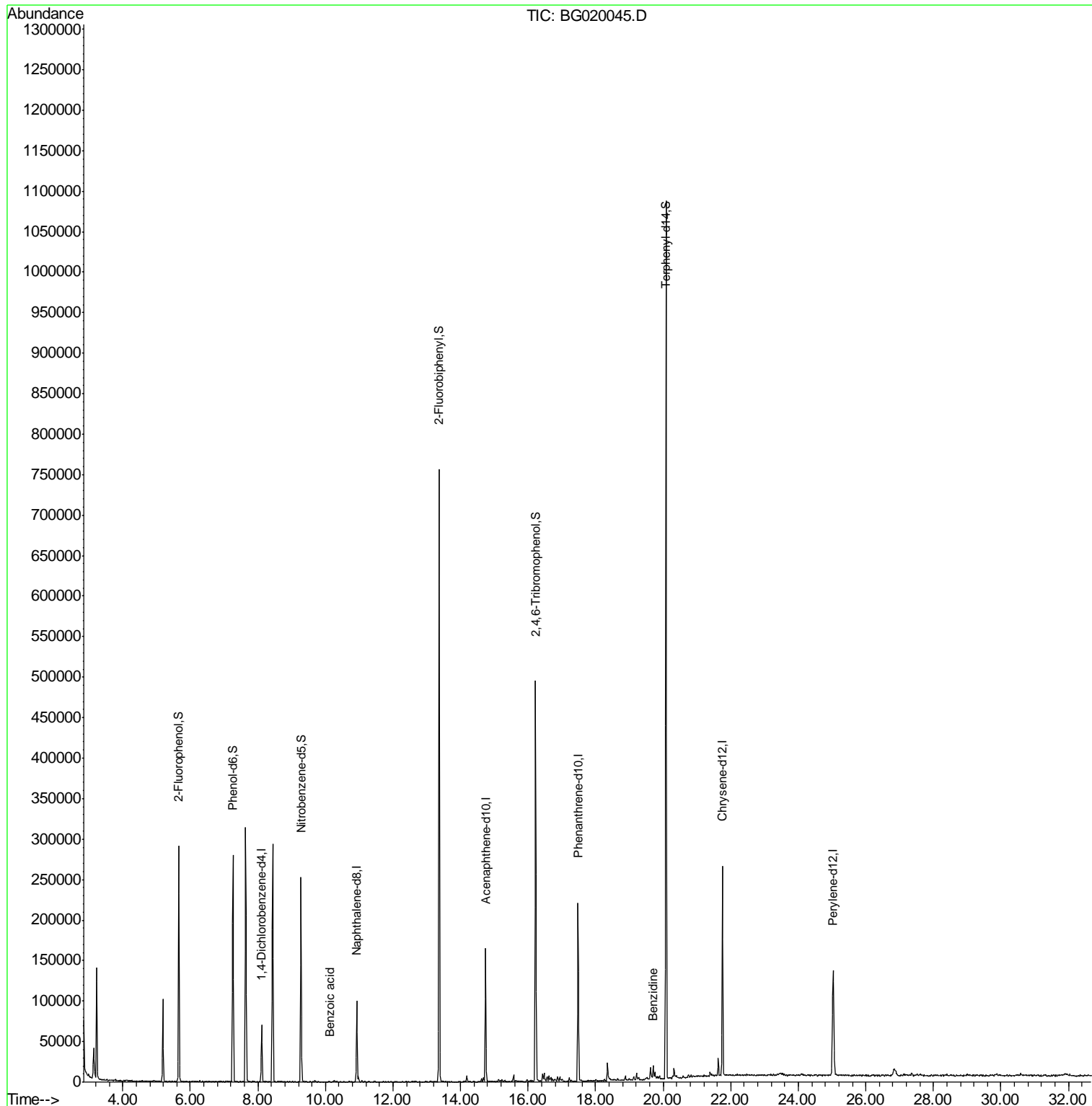
Internal Standards	R.T.	QIon	Response	Conc	Units	Dev(Min)
1) 1,4-Dichlorobenzene-d4	8.11	152	19399	20.00	ng	-0.03
21) Naphthalene-d8	10.93	136	82885	20.00	ng	-0.02
38) Acenaphthene-d10	14.74	164	57406	20.00	ng	-0.02
63) Phenanthrene-d10	17.48	188	137809	20.00	ng	-0.03
75) Chrysene-d12	21.75	240	164616	20.00	ng	-0.04
86) Perylene-d12	25.03	264	153829	20.00	ng	-0.06
System Monitoring Compounds						
5) 2-Fluorophenol	5.66	112	118196	110.12	ng	-0.01
7) Phenol-d6	7.26	99	160370	98.96	ng	-0.01
23) Nitrobenzene-d5	9.28	82	156018	96.07	ng	-0.02
41) 2,4,6-Tribromophenol	16.22	330	91718	104.42	ng	-0.02
44) 2-Fluorobiphenyl	13.37	172	380642	90.54	ng	-0.02
78) Terphenyl-d14	20.08	244	484951	71.86	ng	-0.03
Target Compounds						Qvalue
32) Benzoic acid	10.12	122	54	6.05	ng	# 1
76) Benzidine	19.70	184	12914	2.39	ng	98

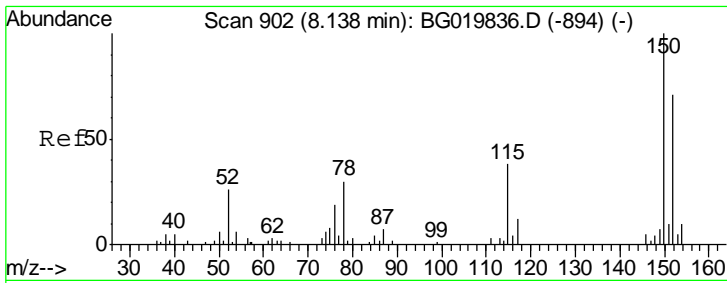
(#) = qualifier out of range (m) = manual integration (+) = signals summed

Data Path : Z:\HPCHEM1\BNA\_G\DATA\BG121015\  
Data File : BG020045.D  
Acq On : 9 Dec 2015 16:02  
Operator : UM/SJ  
Sample : G4556-10  
Misc :  
ALS Vial : 15 Sample Multiplier: 1

Instrument :  
BNA\_G  
ClientSampled :  
ELP-1

Quant Time: Dec 10 00:46:54 2015  
Quant Method : Z:\HPCHEM1\BNA\_G\METHODS\8270-BG120215.M  
Quant Title : ASP BNA STANDARDS FOR 5 POINT CALIBRATION  
QLast Update : Wed Dec 02 18:50:01 2015  
Response via : Initial Calibration

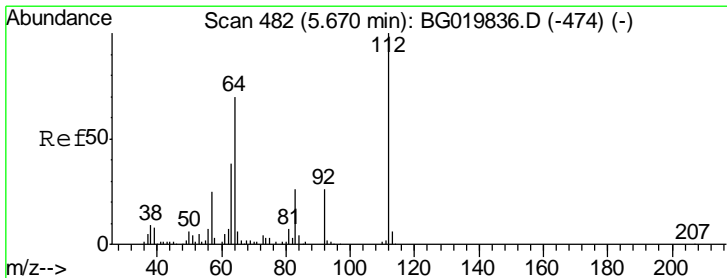
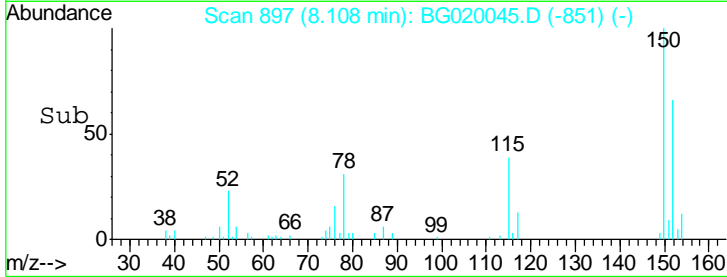
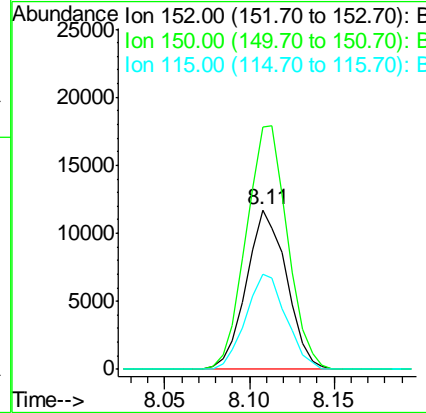
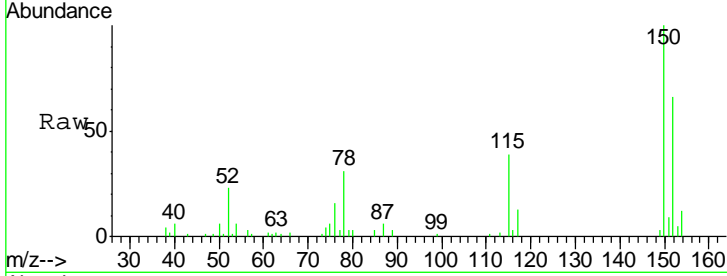




#1  
 1,4-Dichlorobenzene-d4  
 Concen: 20.00 ng  
 RT: 8.11 min Scan# 897  
 Delta R.T. -0.03 min  
 Lab File: BG020045.D  
 Acq: 9 Dec 2015 16:02

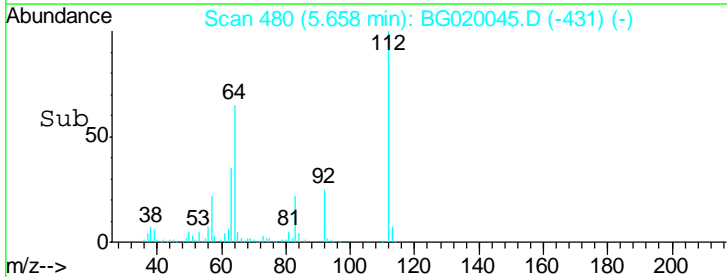
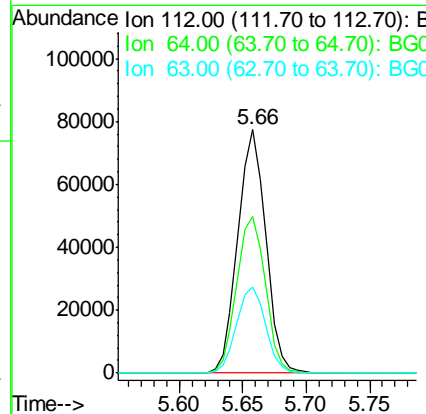
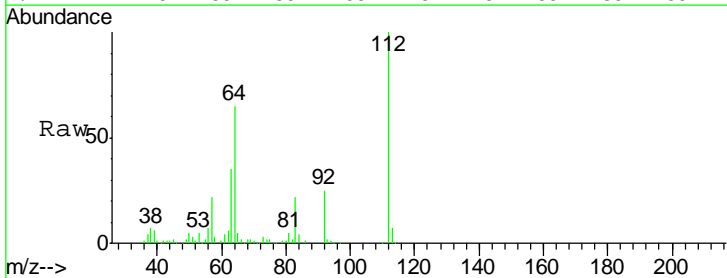
Instrument :  
 BNA\_G  
 ClientSampled :  
 ELP-1

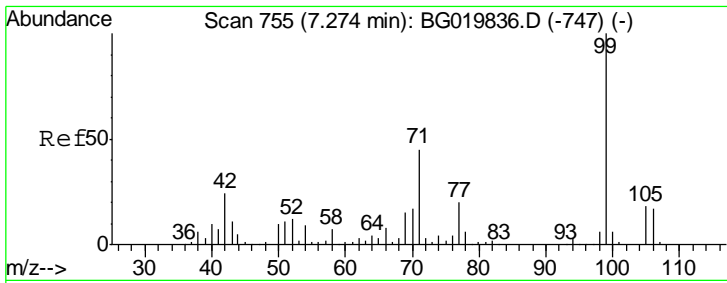
Tgt Ion	Resp	Lower	Upper
152	19399		
150	151.9	115.0	172.4
115	59.7	43.9	65.9



#5  
 2-Fluorophenol  
 Concen: 110.12 ng  
 RT: 5.66 min Scan# 480  
 Delta R.T. -0.01 min  
 Lab File: BG020045.D  
 Acq: 9 Dec 2015 16:02

Tgt Ion	Resp	Lower	Upper
112	118196		
64	64.5	43.7	65.5
63	35.5	24.0	36.0

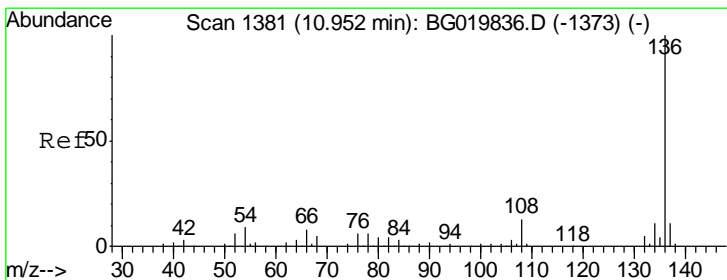
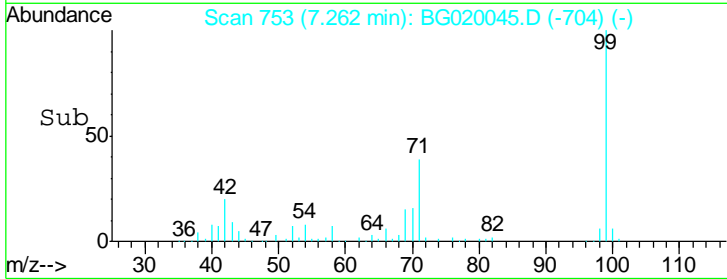
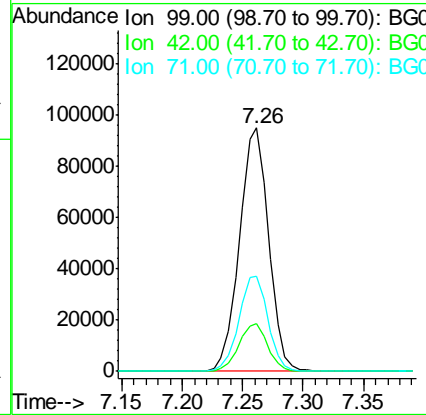
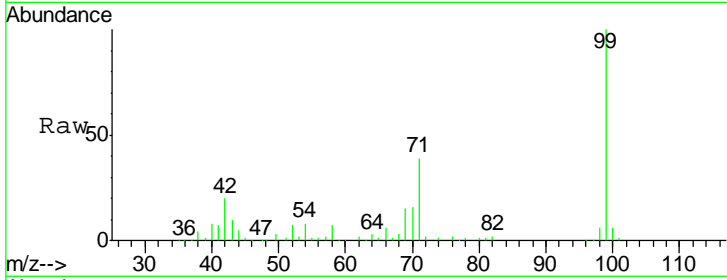




#7  
 Phenol-d6  
 Concen: 98.96 ng  
 RT: 7.26 min Scan# 753  
 Delta R.T. -0.01 min  
 Lab File: BG020045.D  
 Acq: 9 Dec 2015 16:02

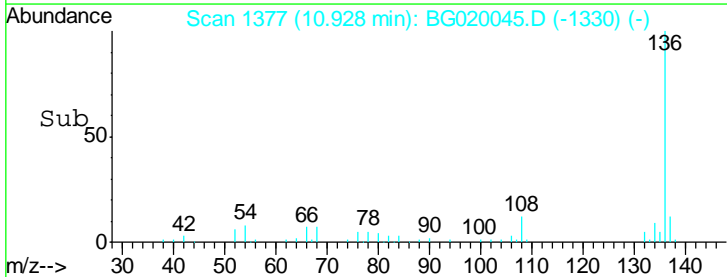
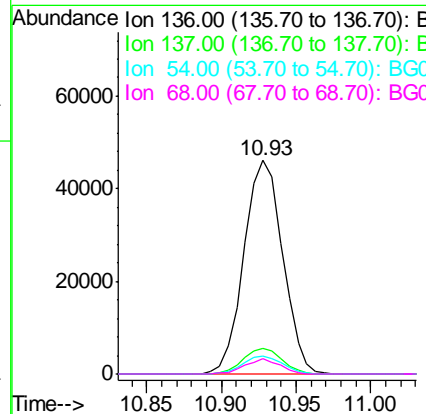
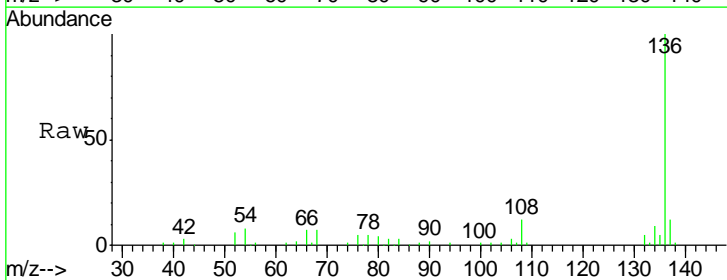
Instrument :  
 BNA\_G  
 ClientSampled :  
 ELP-1

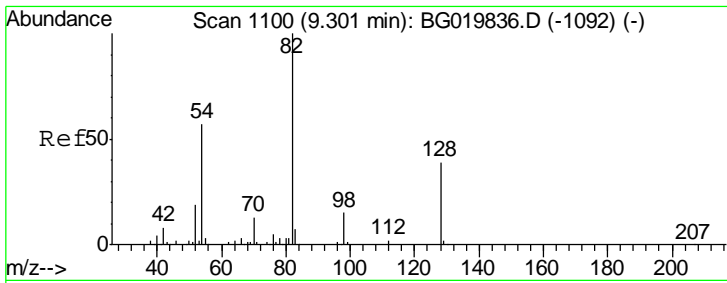
Tgt Ion	Resp	Lower	Upper
99	160370		
42	19.6	11.5	17.3#
71	39.2	22.6	34.0#



#21  
 Naphthalene-d8  
 Concen: 20.00 ng  
 RT: 10.93 min Scan# 1377  
 Delta R.T. -0.02 min  
 Lab File: BG020045.D  
 Acq: 9 Dec 2015 16:02

Tgt Ion	Resp	Lower	Upper
136	82885		
137	12.1	8.6	12.8
54	8.4	5.4	8.2#
68	7.4	5.3	7.9

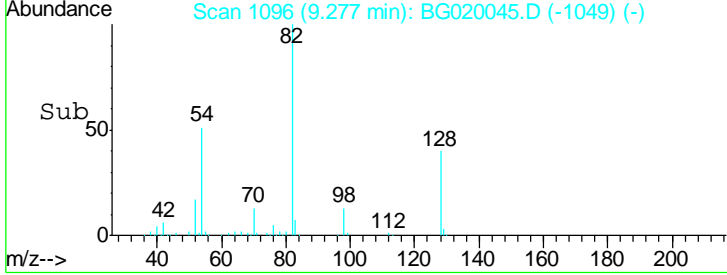
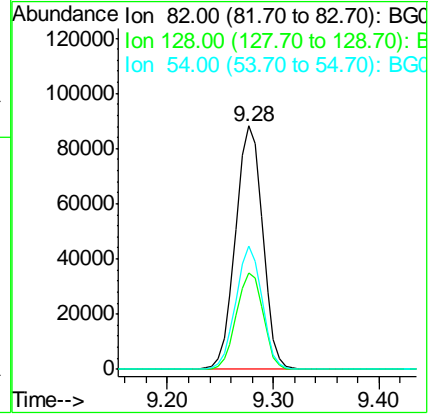
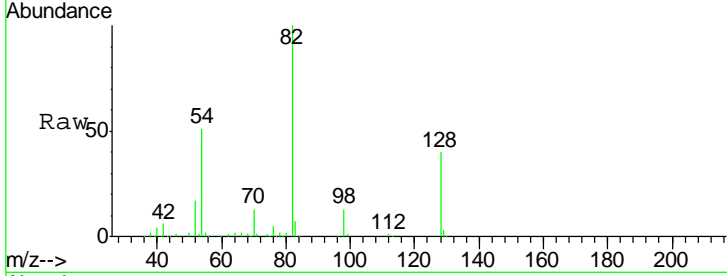




#23  
 Nitrobenzene-d5  
 Concen: 96.07 ng  
 RT: 9.28 min Scan# 1096  
 Delta R.T. -0.02 min  
 Lab File: BG020045.D  
 Acq: 9 Dec 2015 16:02

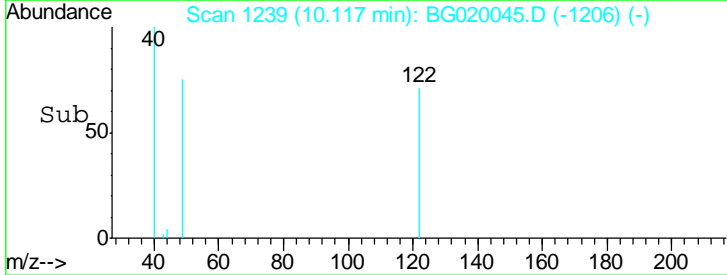
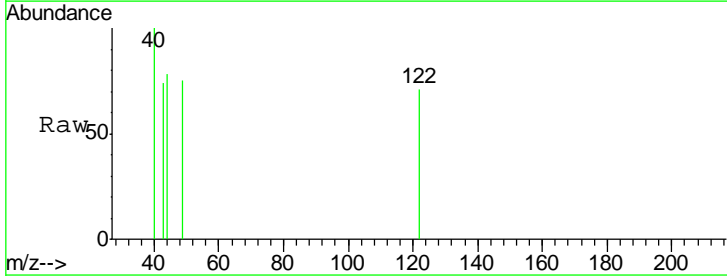
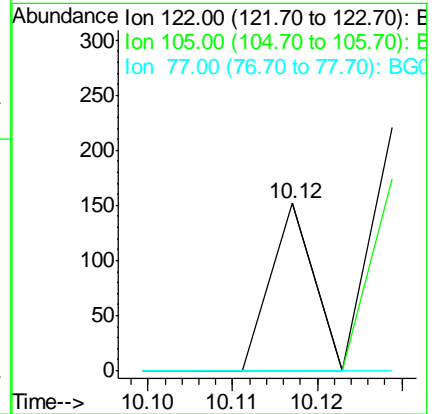
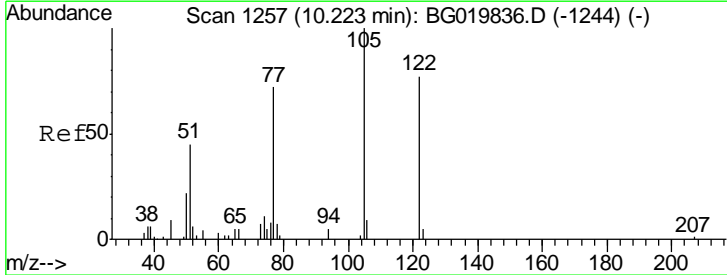
Instrument :  
 BNA\_G  
 ClientSampled :  
 ELP-1

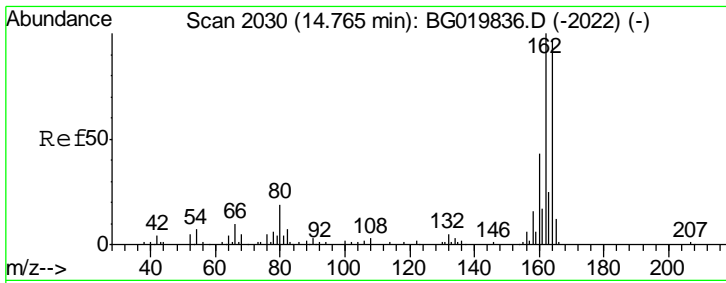
Tgt Ion	Resp	Lower	Upper
82	156018		
128	39.5	36.7	55.1
54	50.6	33.8	50.8



#32  
 Benzoic acid  
 Concen: 6.05 ng  
 RT: 10.12 min Scan# 1239  
 Delta R.T. -0.11 min  
 Lab File: BG020045.D  
 Acq: 9 Dec 2015 16:02

Tgt Ion	Resp	Lower	Upper
122	54		
105	0.0	103.8	143.8#
77	0.0	68.8	108.8#



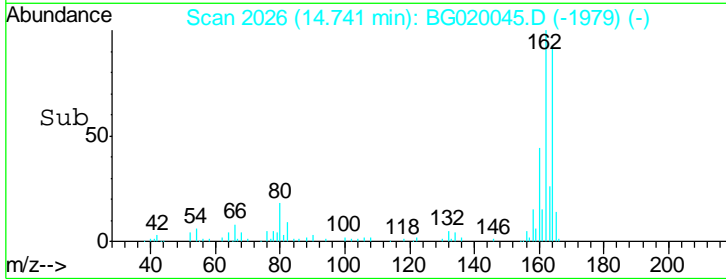
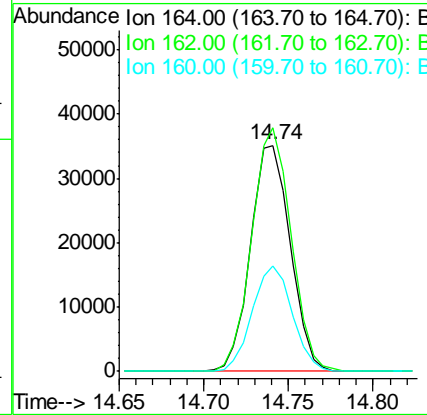
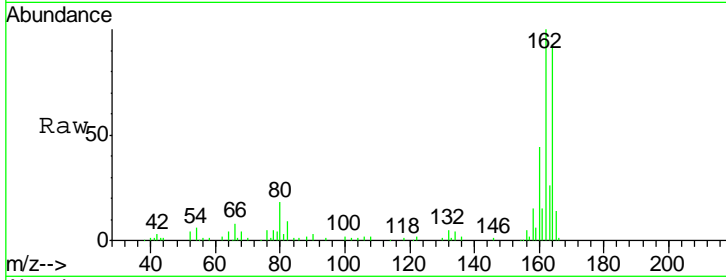


#38  
 Acenaphthene-d10  
 Concen: 20.00 ng  
 RT: 14.74 min Scan# 2026  
 Delta R.T. -0.02 min  
 Lab File: BG020045.D  
 Acq: 9 Dec 2015 16:02

Instrument :  
 BNA\_G  
 ClientSampled :  
 ELP-1

Tgt Ion:164 Resp: 57406

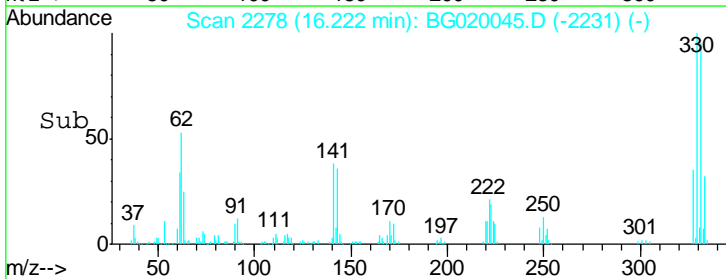
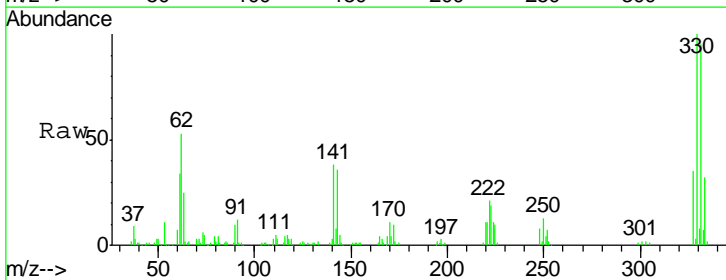
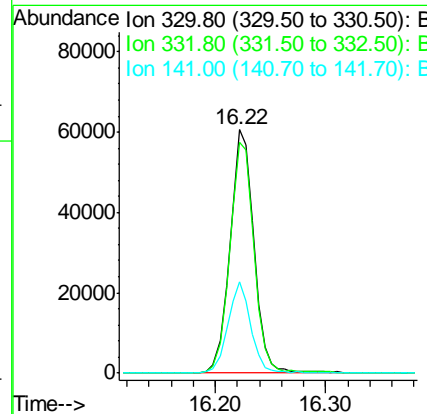
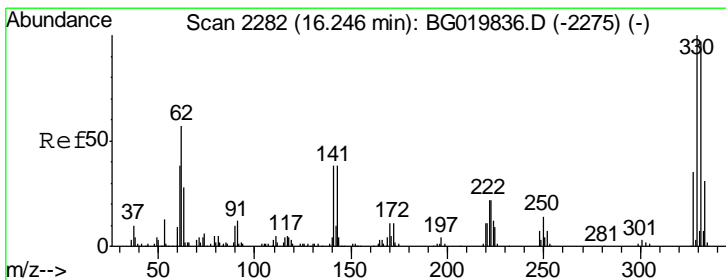
Ion	Ratio	Lower	Upper
164	100		
162	107.7	78.8	118.2
160	46.9	36.4	54.6

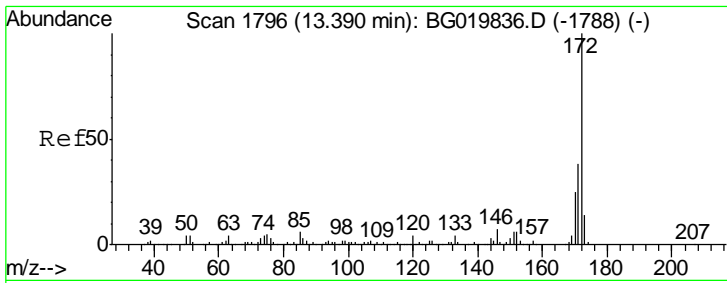


#41  
 2,4,6-Tribromophenol  
 Concen: 104.42 ng  
 RT: 16.22 min Scan# 2278  
 Delta R.T. -0.02 min  
 Lab File: BG020045.D  
 Acq: 9 Dec 2015 16:02

Tgt Ion:330 Resp: 91718

Ion	Ratio	Lower	Upper
330	100		
332	96.4	78.1	117.1
141	35.8	28.2	42.2



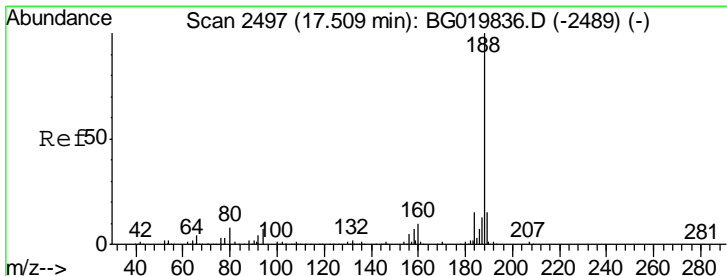
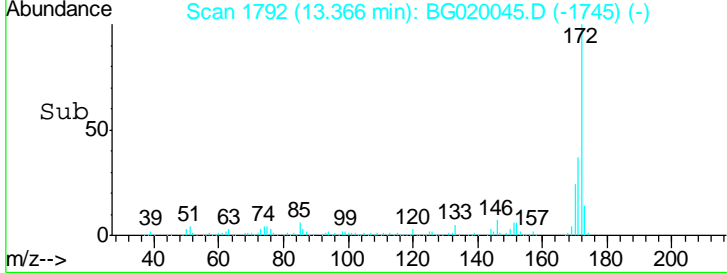
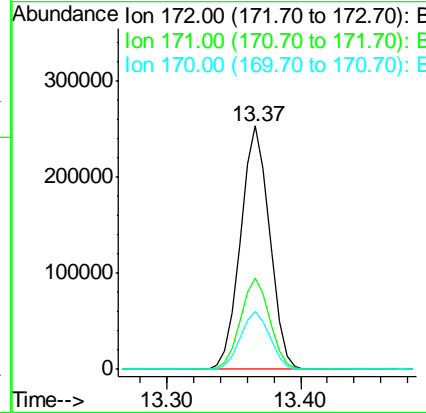
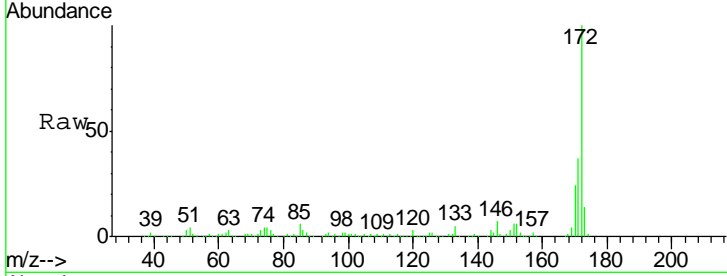


#44  
 2-Fluorobiphenyl  
 Concen: 90.54 ng  
 RT: 13.37 min Scan# 1792  
 Delta R.T. -0.02 min  
 Lab File: BG020045.D  
 Acq: 9 Dec 2015 16:02

Instrument :  
 BNA\_G  
 ClientSampled :  
 ELP-1

Tgt Ion:172 Resp: 380642

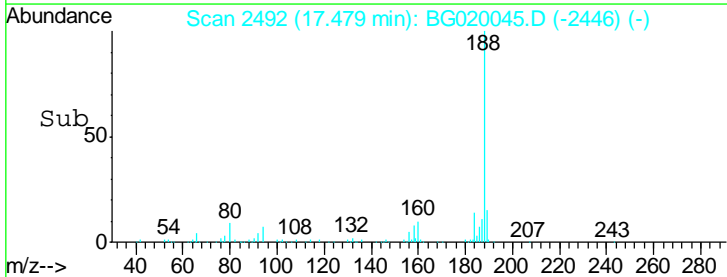
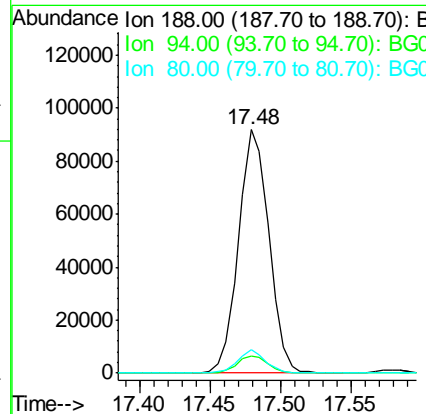
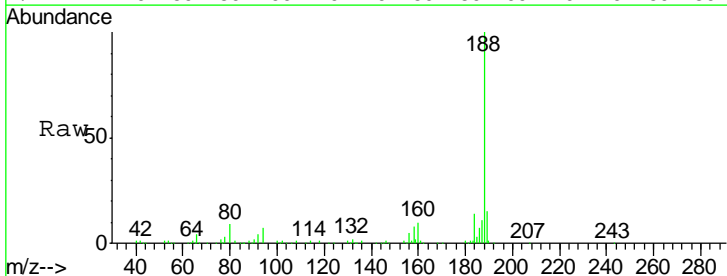
Ion	Ratio	Lower	Upper
172	100		
171	37.5	29.0	43.6
170	24.0	19.9	29.9

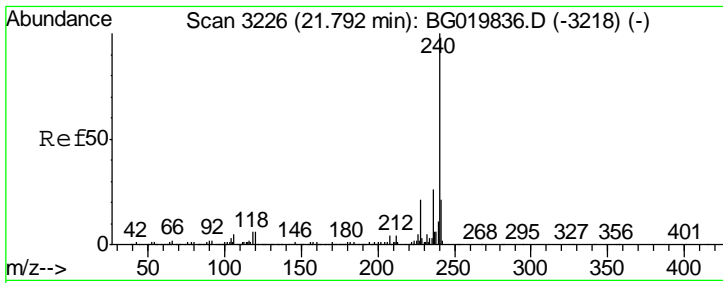


#63  
 Phenanthrene-d10  
 Concen: 20.00 ng  
 RT: 17.48 min Scan# 2492  
 Delta R.T. -0.03 min  
 Lab File: BG020045.D  
 Acq: 9 Dec 2015 16:02

Tgt Ion:188 Resp: 137809

Ion	Ratio	Lower	Upper
188	100		
94	7.2	7.7	11.5#
80	9.5	7.8	11.8



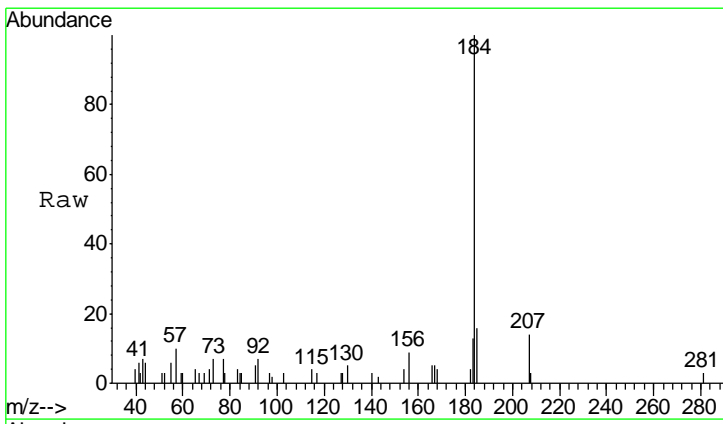
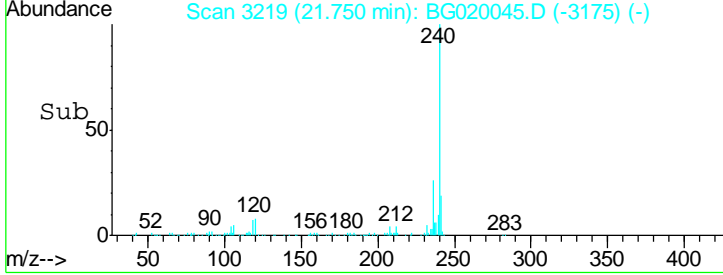
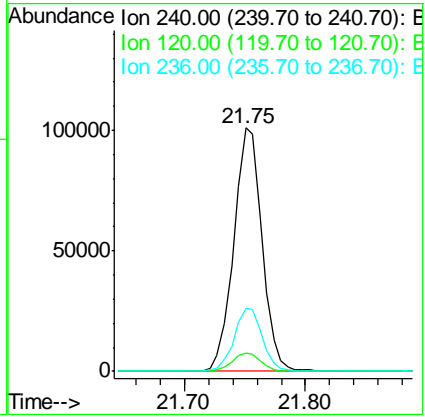
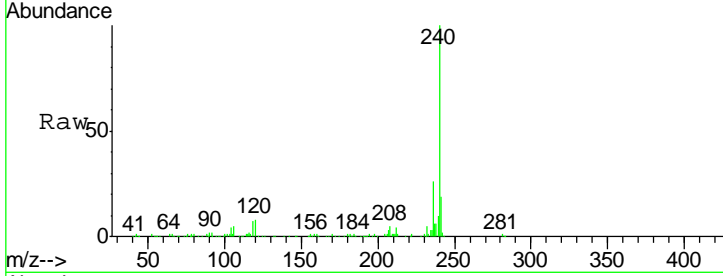


#75  
 Chrysene-d12  
 Concen: 20.00 ng  
 RT: 21.75 min Scan# 3219  
 Delta R.T. -0.04 min  
 Lab File: BG020045.D  
 Acq: 9 Dec 2015 16:02

Instrument :  
 BNA\_G  
 ClientSampled :  
 ELP-1

Tgt Ion: 240 Resp: 164616

Ion	Ratio	Lower	Upper
240	100		
120	7.7	7.4	11.0
236	25.8	20.7	31.1



#76  
 Benzidine  
 Concen: 2.39 ng  
 RT: 19.70 min Scan# 2870  
 Delta R.T. -0.03 min  
 Lab File: BG020045.D  
 Acq: 9 Dec 2015 16:02

Tgt Ion: 184 Resp: 12914

Ion	Ratio	Lower	Upper
184	100		
185	15.6	13.4	20.2
183	12.9	10.1	15.1

