

Data Path : Z:\HPCHEM1\BNA_G\DATA\BG121015\
 Data File : BG020061.D
 Acq On : 10 Dec 2015 2:25
 Operator : UM/SJ
 Sample : G4701-01
 Misc :
 ALS Vial : 31 Sample Multiplier: 1

Instrument :
 BNA_G
 ClientSampleId :
 1511243912

Quant Time: Dec 10 04:07:07 2015
 Quant Method : Z:\HPCHEM1\BNA_G\METHODS\8270-BG120215.M
 Quant Title : ASP BNA STANDARDS FOR 5 POINT CALIBRATION
 QLast Update : Wed Dec 02 18:50:01 2015
 Response via : Initial Calibration

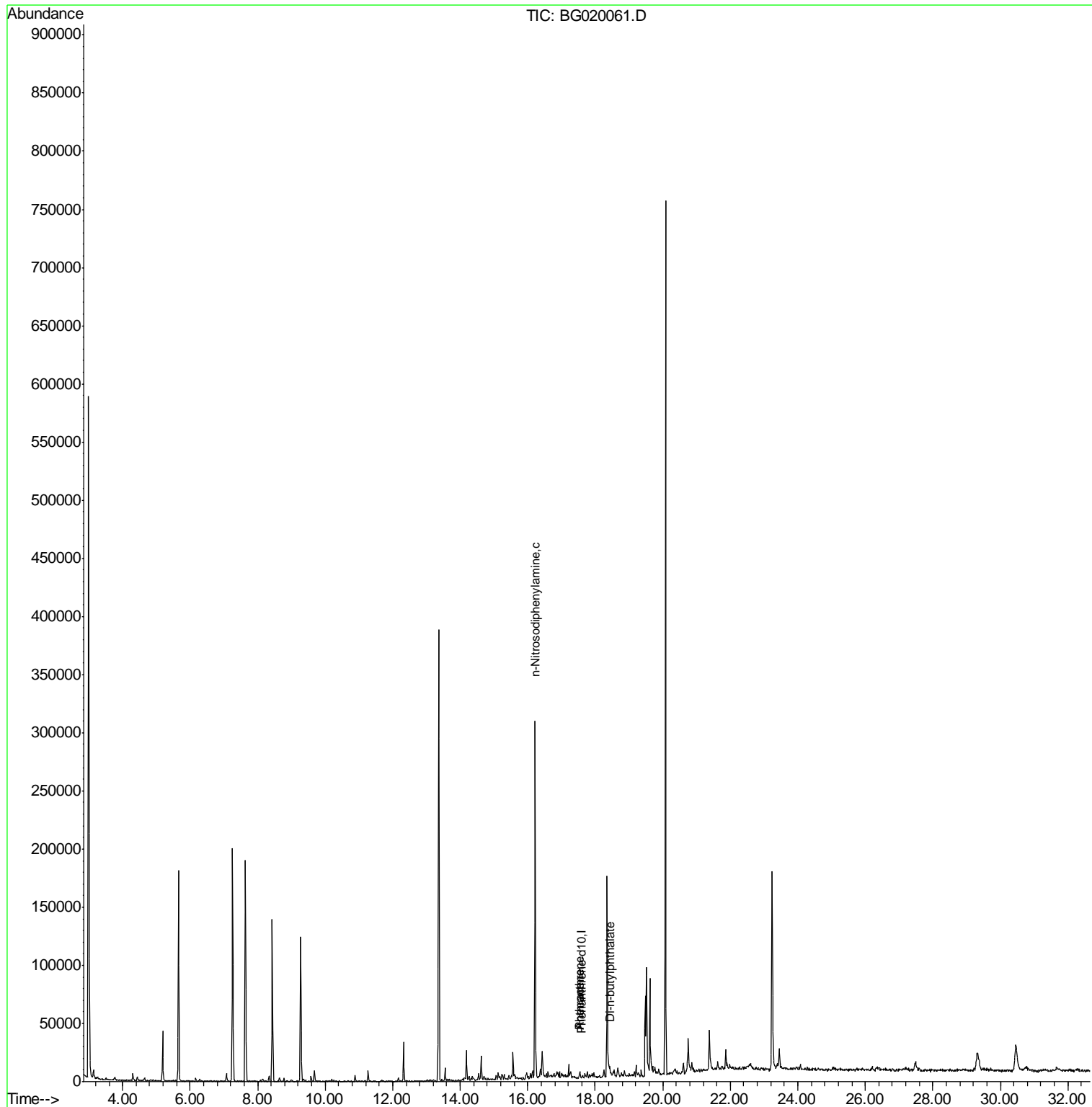
Internal Standards	R.T.	QIon	Response	Conc	Units	Dev(Min)
1) 1,4-Dichlorobenzene-d4	0.00	152	0	0.00	ng	-8.14
21) Naphthalene-d8	0.00	136	0	0.00	ng	-10.95
38) Acenaphthene-d10	0.00	164	0	0.00	ng	-14.77
63) Phenanthrene-d10	17.58	188	476	20.00	ng	0.07
75) Chrysene-d12	0.00	240	0	0.00	ng	-21.79
86) Perylene-d12	0.00	264	0	0.00	ng	-25.09
System Monitoring Compounds						
5) 2-Fluorophenol	5.66	112	74323	0.00	ng	-0.01
7) Phenol-d6	7.26	99	115703	0.00	ng	-0.01
23) Nitrobenzene-d5	9.27	82	76323	0.00	ng	-0.03
41) 2,4,6-Tribromophenol	16.22	330	56909	0.00	ng	-0.03
44) 2-Fluorobiphenyl	13.36	172	190890	0.00	ng	-0.03
78) Terphenyl-d14	20.08	244	324301	0.00	ng	-0.03
Target Compounds						Qvalue
65) n-Nitrosodiphenylamine	16.22	169	1961	142.36	ng	# 40
70) Phenanthrene	17.52	178	250	9.28	ng	# 58
71) Anthracene	17.52	178	250	9.11	ng	# 57
73) Di-n-butylphthalate	18.43	149	1866	63.00	ng	# 91

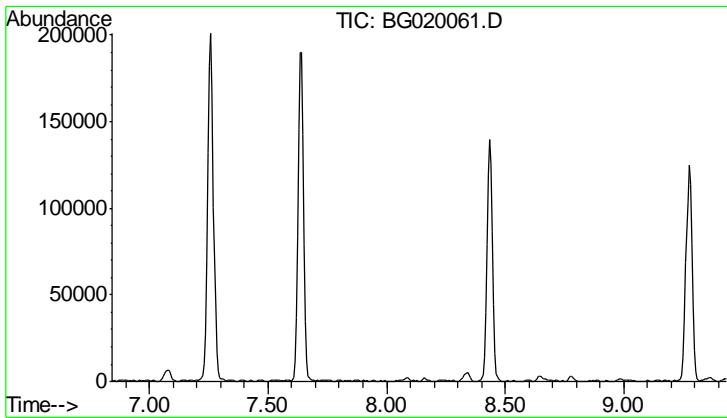
(#) = qualifier out of range (m) = manual integration (+) = signals summed

Data Path : Z:\HPCHEM1\BNA_G\DATA\BG121015\
 Data File : BG020061.D
 Acq On : 10 Dec 2015 2:25
 Operator : UM/SJ
 Sample : G4701-01
 Misc :
 ALS Vial : 31 Sample Multiplier: 1

Instrument :
 BNA_G
 ClientSampleId :
 1511243912

Quant Time: Dec 10 04:07:07 2015
 Quant Method : Z:\HPCHEM1\BNA_G\METHODS\8270-BG120215.M
 Quant Title : ASP BNA STANDARDS FOR 5 POINT CALIBRATION
 QLast Update : Wed Dec 02 18:50:01 2015
 Response via : Initial Calibration

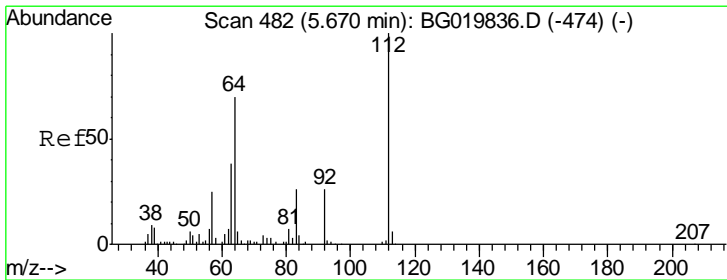
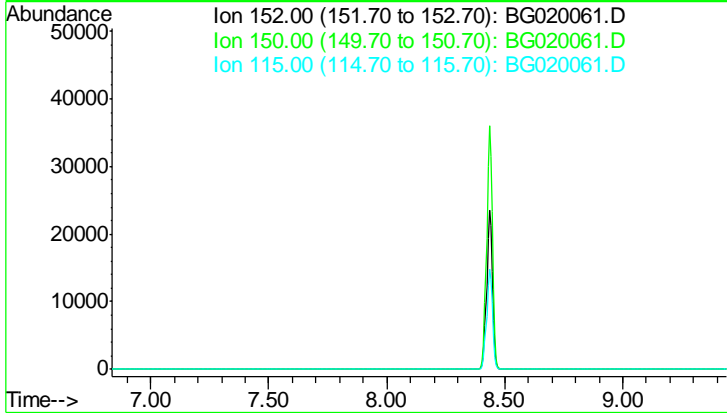




#1
 1,4-Dichlorobenzene-d4
 Concen: 0.00 ng
 Expected RT: 8.14 min
 Lab File: BG020061.D
 Acq: 10 Dec 2015 2:25

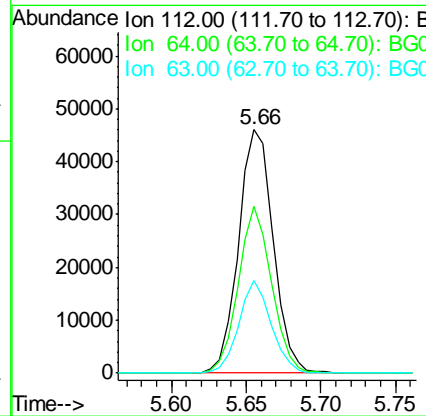
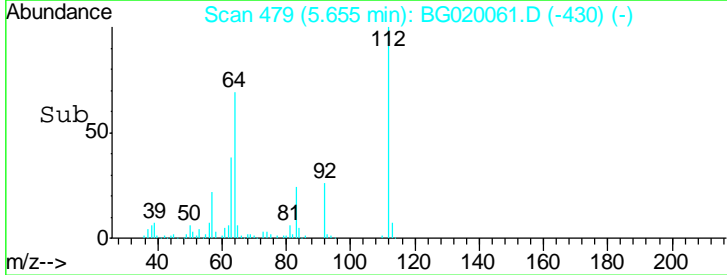
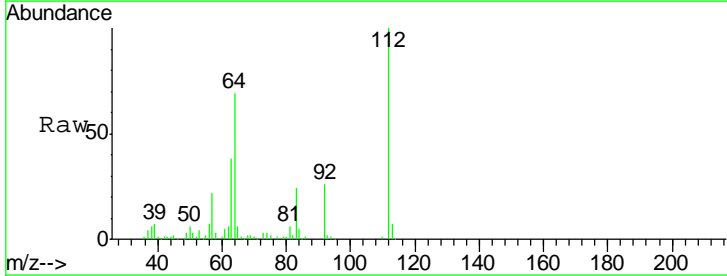
Instrument :
 BNA_G
ClientSampled :
 1511243912

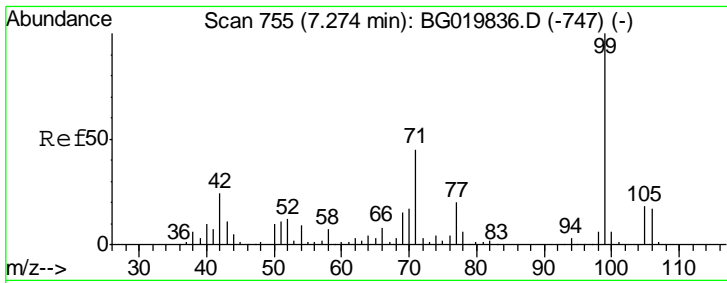
Tgt Ion: 152
 Sig Exp Ratio
 152 100
 150 143.7
 115 54.9



#5
 2-Fluorophenol
 Concen: 0.00 ng
 RT: 5.66 min Scan# 479
 Delta R.T. -0.01 min
 Lab File: BG020061.D
 Acq: 10 Dec 2015 2:25

Tgt Ion: 112 Resp: 74323
 Ion Ratio Lower Upper
 112 100
 64 68.8 43.7 65.5#
 63 38.2 24.0 36.0#

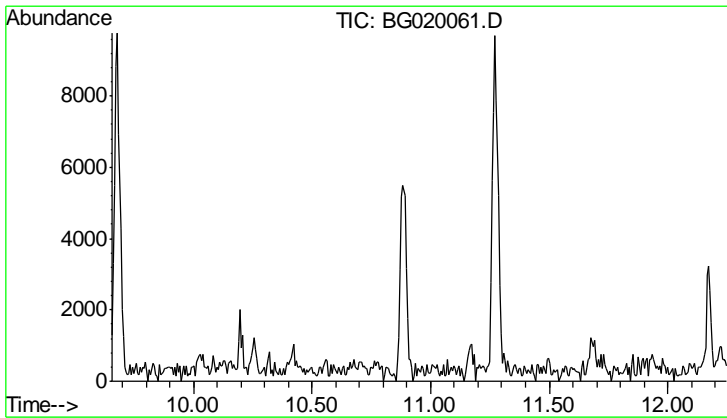
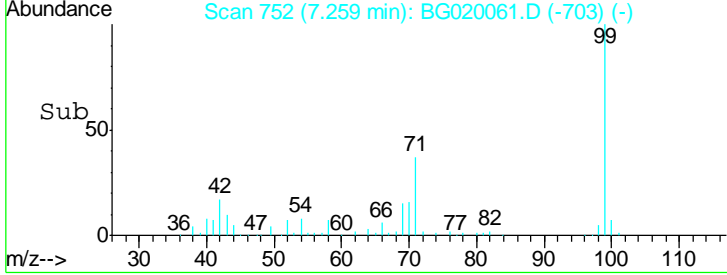
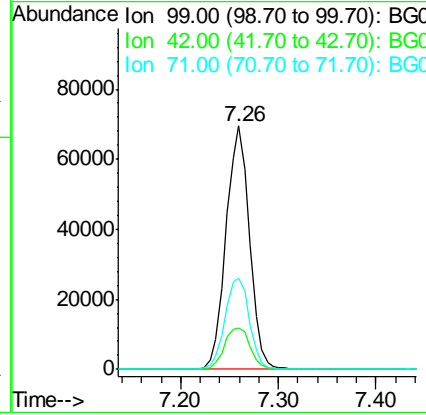
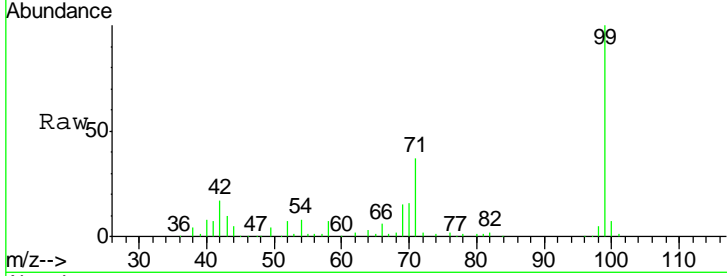




#7
 Phenol-d6
 Concen: 0.00 ng
 RT: 7.26 min Scan# 752
 Delta R.T. -0.01 min
 Lab File: BG020061.D
 Acq: 10 Dec 2015 2:25

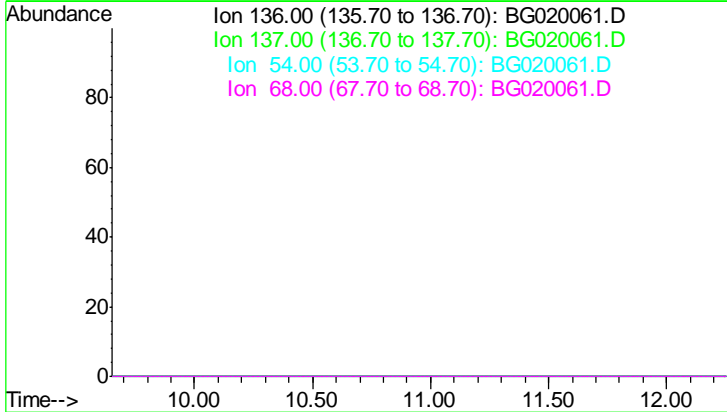
Instrument :
 BNA_G
 ClientSampleID :
 1511243912

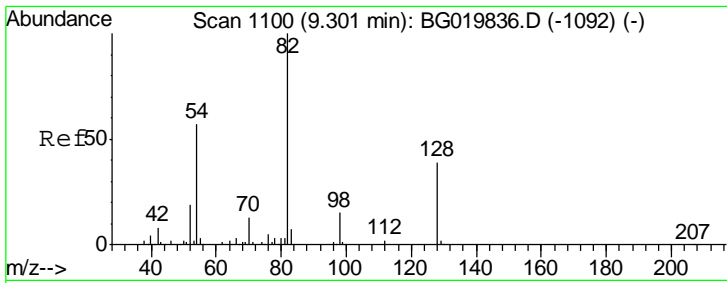
Tgt Ion	Resp	Lower	Upper
99	115703		
42	17.2	11.5	17.3
71	37.3	22.6	34.0



#21
 Naphthalene-d8
 Concen: 0.00 ng
 Expected RT: 10.95 min
 Lab File: BG020061.D
 Acq: 10 Dec 2015 2:25

Tgt Ion	Sig	Exp Ratio
136	100	
137	10.7	
54	6.8	
68	6.6	

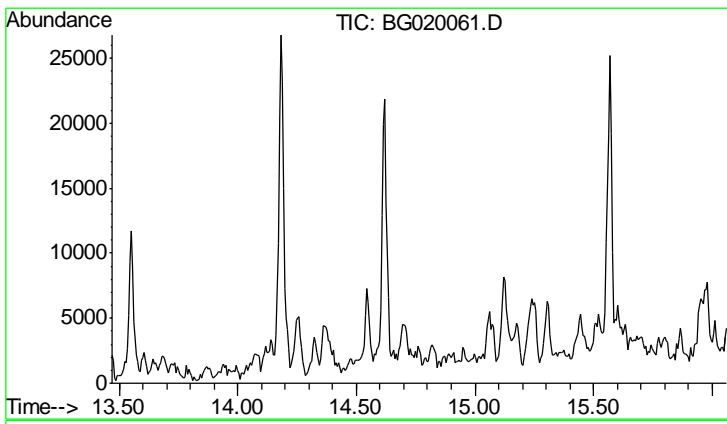
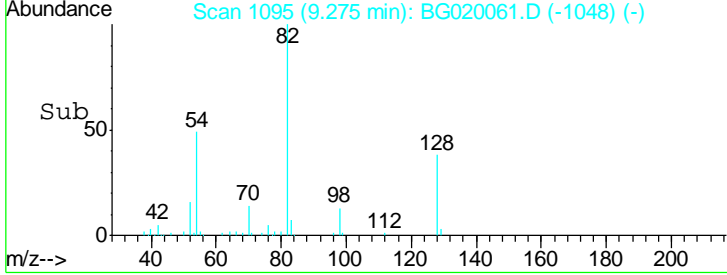
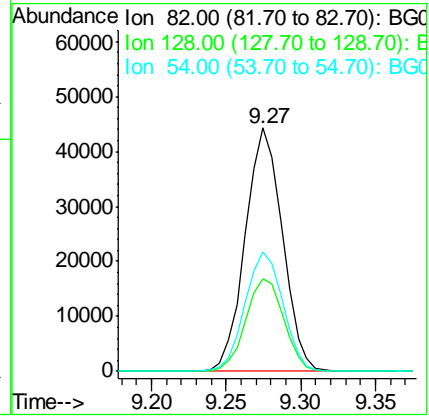
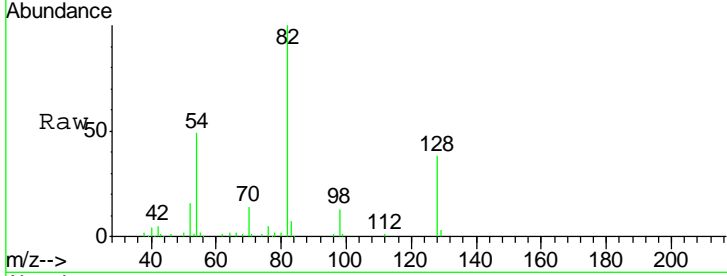




#23
 Nitrobenzene-d5
 Concen: 0.00 ng
 RT: 9.27 min Scan# 1095
 Delta R.T. -0.03 min
 Lab File: BG020061.D
 Acq: 10 Dec 2015 2:25

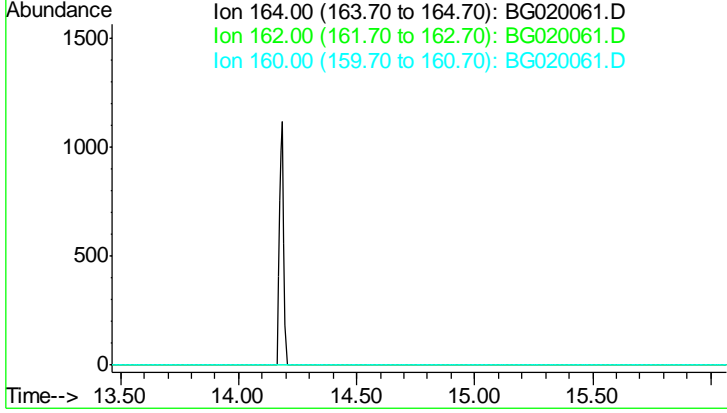
Instrument :
 BNA_G
ClientSampled :
 1511243912

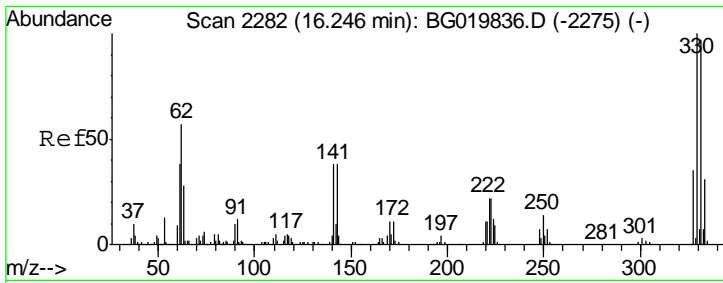
Tgt Ion	Ion	Ratio	Lower	Upper
82	100			
128	38.2	36.7	55.1	
54	49.1	33.8	50.8	



#38
 Acenaphthene-d10
 Concen: 0.00 ng
 Expected RT: 14.77 min
 Lab File: BG020061.D
 Acq: 10 Dec 2015 2:25

Tgt Ion	Sig	Exp Ratio
164	100	
162	98.5	
160	45.5	

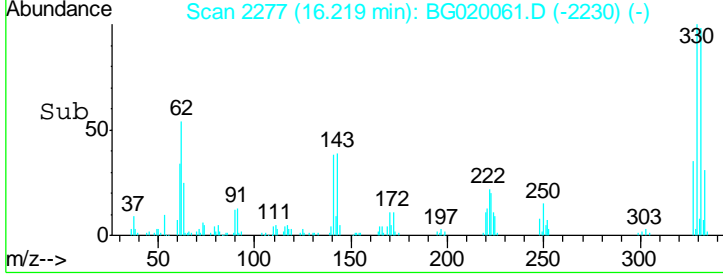
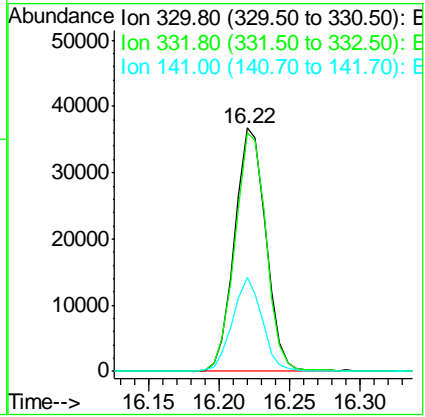
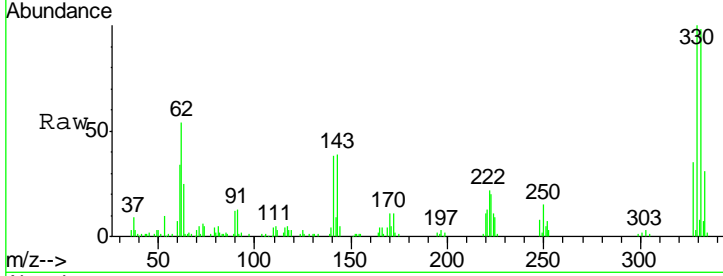




#41
 2,4,6-Tribromophenol
 Concen: 0.00 ng
 RT: 16.22 min Scan# 2277
 Delta R.T. -0.03 min
 Lab File: BG020061.D
 Acq: 10 Dec 2015 2:25

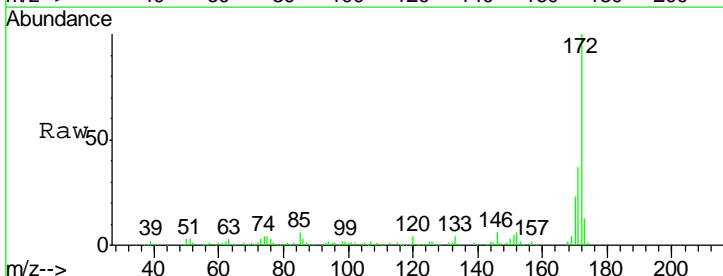
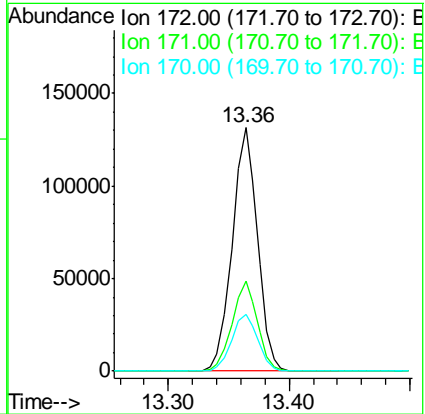
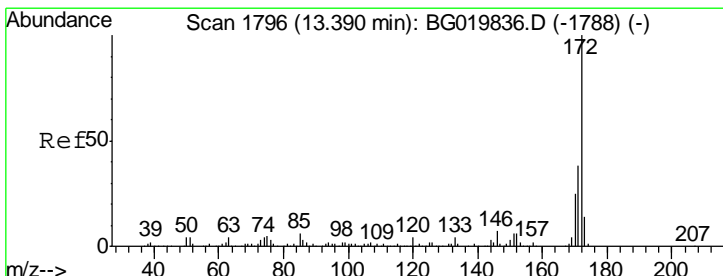
Instrument :
 BNA_G
ClientSampled :
 1511243912

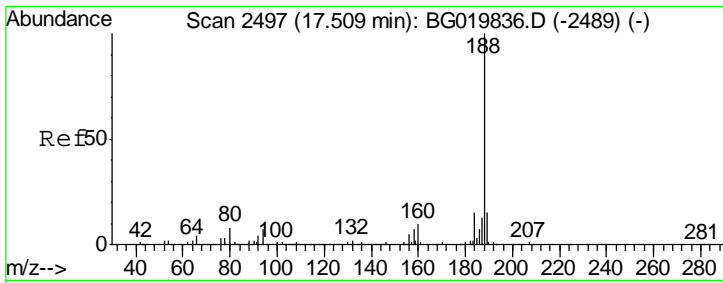
Tgt Ion	Resp	Lower	Upper
330	100		
332	97.3	78.1	117.1
141	36.5	28.2	42.2



#44
 2-Fluorobiphenyl
 Concen: 0.00 ng
 RT: 13.36 min Scan# 1791
 Delta R.T. -0.03 min
 Lab File: BG020061.D
 Acq: 10 Dec 2015 2:25

Tgt Ion	Resp	Lower	Upper
172	100		
171	36.8	29.0	43.6
170	23.5	19.9	29.9

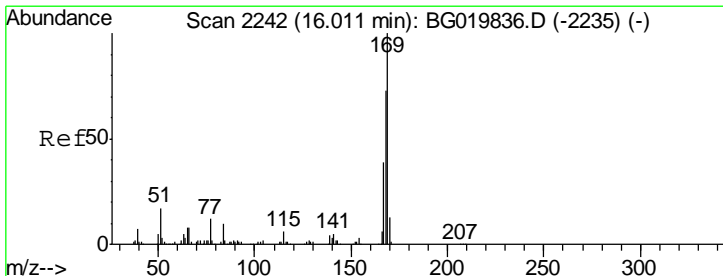
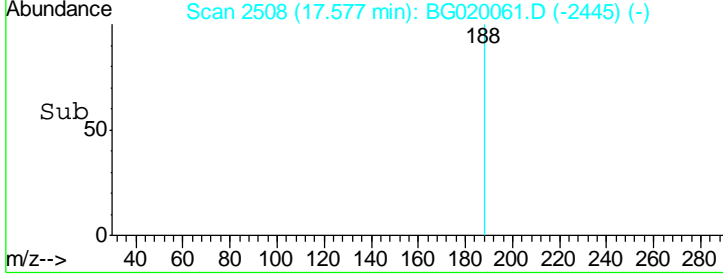
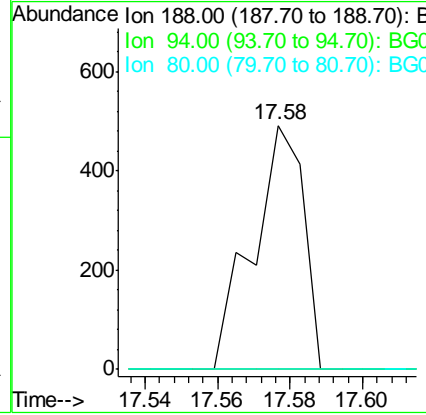
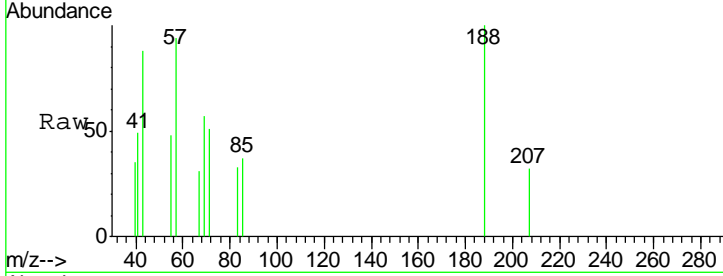




#63
 Phenanthrene-d10
 Concen: 20.00 ng
 RT: 17.58 min Scan# 2508
 Delta R.T. 0.07 min
 Lab File: BG020061.D
 Acq: 10 Dec 2015 2:25

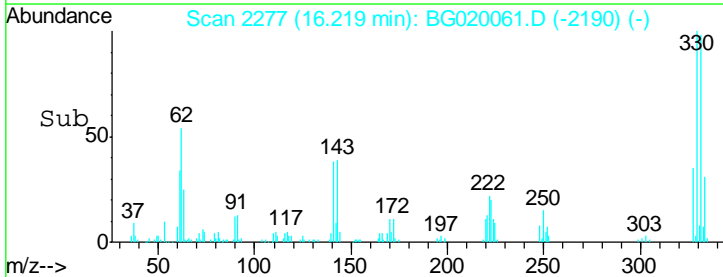
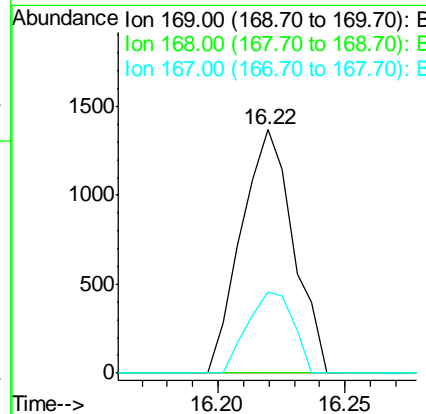
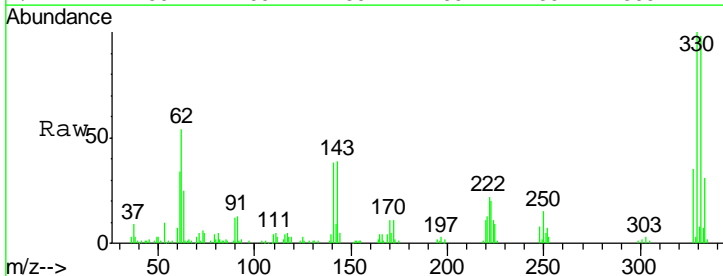
Instrument :
 BNA_G
 ClientSampled :
 1511243912

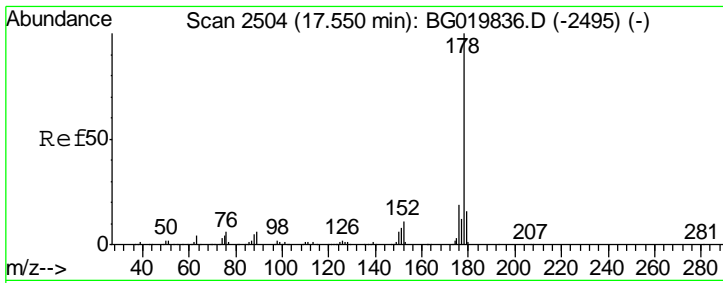
Tgt Ion	Ratio	Lower	Upper
188	100		
94	0.0	7.7	11.5#
80	0.0	7.8	11.8#



#65
 n-Nitrosodiphenylamine
 Concen: 142.36 ng
 RT: 16.22 min Scan# 2277
 Delta R.T. 0.21 min
 Lab File: BG020061.D
 Acq: 10 Dec 2015 2:25

Tgt Ion	Ratio	Lower	Upper
169	100		
168	0.0	58.2	87.2#
167	33.5	32.7	49.1

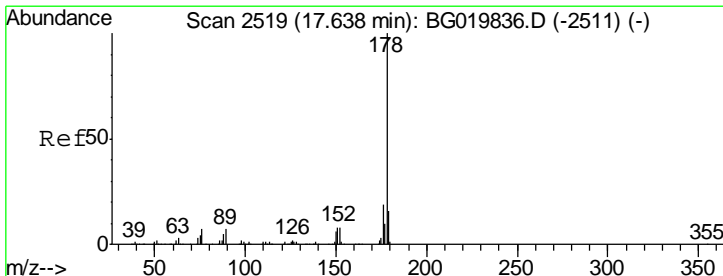
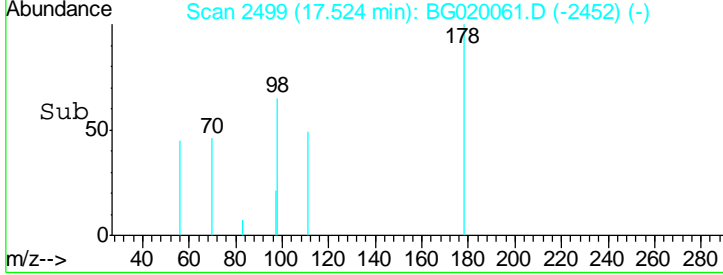
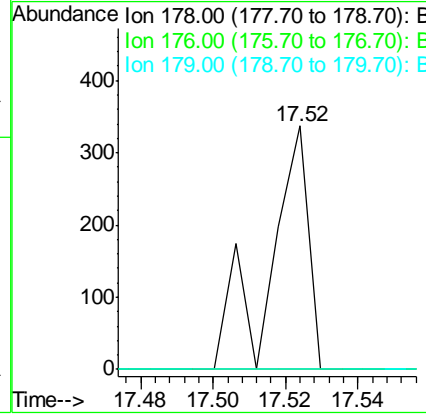
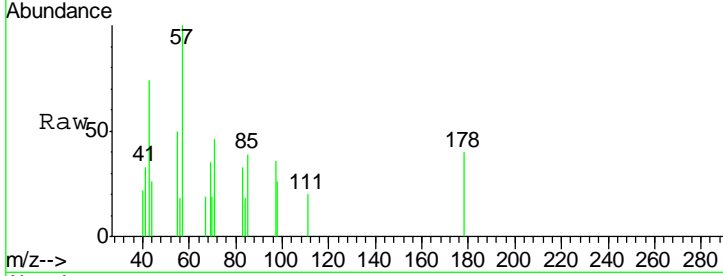




#70
 Phenanthrene
 Concen: 9.28 ng
 RT: 17.52 min Scan# 2499
 Delta R.T. -0.03 min
 Lab File: BG020061.D
 Acq: 10 Dec 2015 2:25

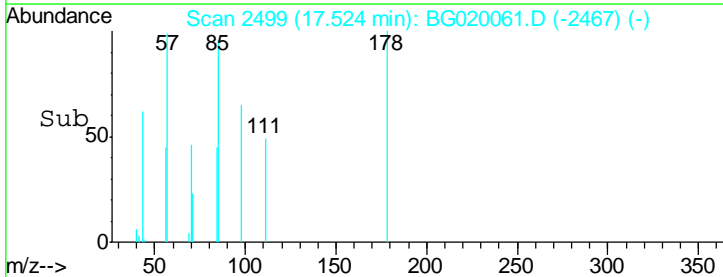
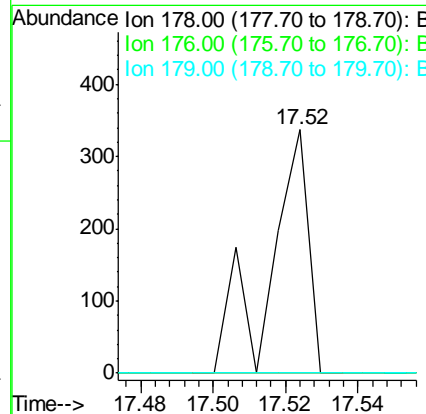
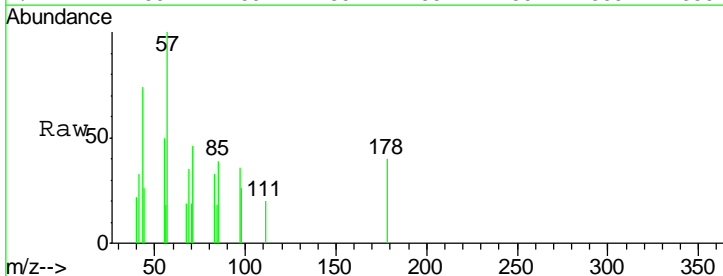
Instrument :
 BNA_G
 ClientSampled :
 1511243912

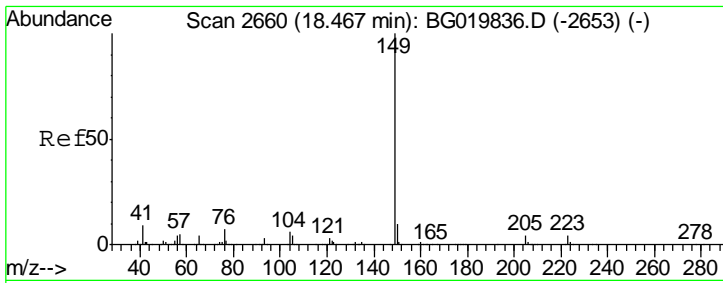
Tgt Ion	Ratio	Lower	Upper
178	100		
176	0.0	16.7	25.1#
179	0.0	13.9	20.9#



#71
 Anthracene
 Concen: 9.11 ng
 RT: 17.52 min Scan# 2499
 Delta R.T. -0.11 min
 Lab File: BG020061.D
 Acq: 10 Dec 2015 2:25

Tgt Ion	Ratio	Lower	Upper
178	100		
176	0.0	16.8	25.2#
179	0.0	13.9	20.9#

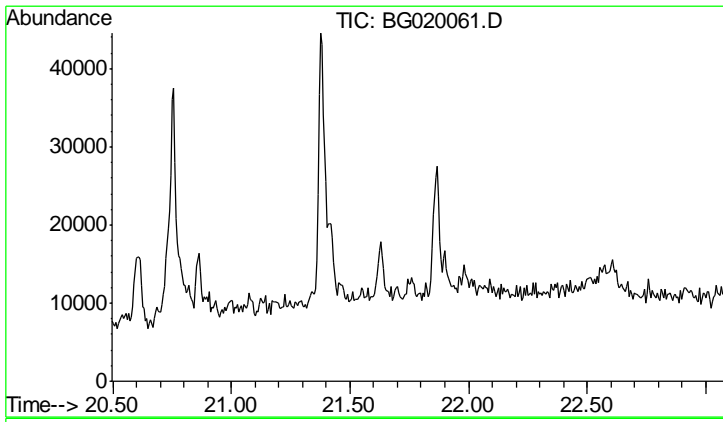
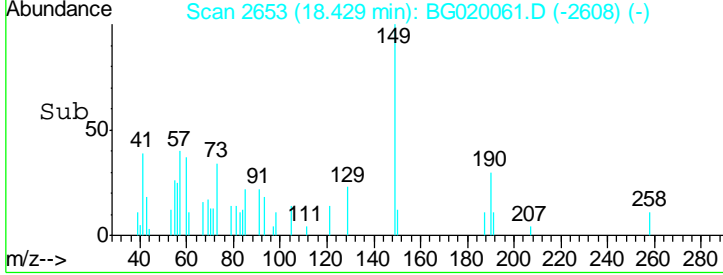
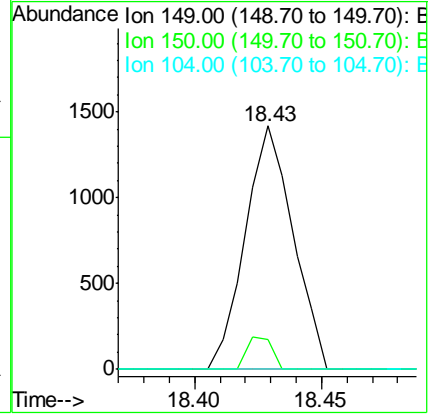
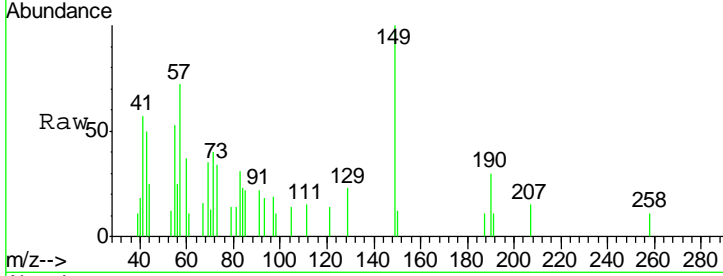




#73
 Di-n-butylphthalate
 Concen: 63.00 ng
 RT: 18.43 min Scan# 2653
 Delta R.T. -0.04 min
 Lab File: BG020061.D
 Acq: 10 Dec 2015 2:25

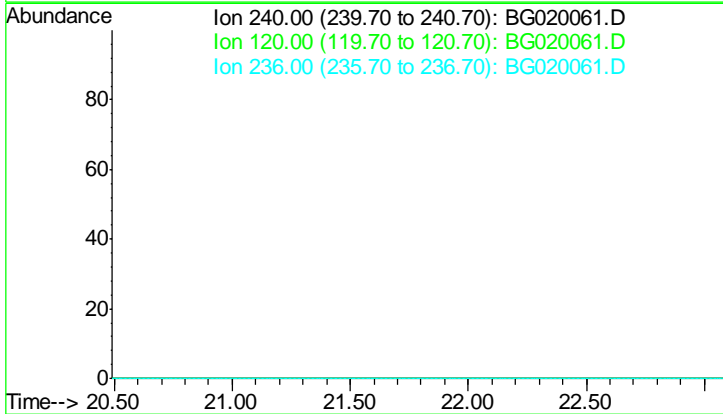
Instrument :
 BNA_G
ClientSampled :
 1511243912

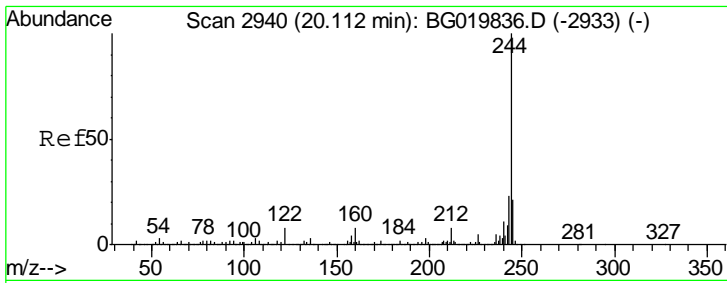
Tgt Ion	Resp	Lower	Upper
149	100		
150	12.1	8.2	12.4
104	0.0	4.4	6.6#



#75
 Chrysene-d12
 Concen: 0.00 ng
 Expected RT: 21.79 min
 Lab File: BG020061.D
 Acq: 10 Dec 2015 2:25

Tgt Ion	Exp Ratio
240	100
120	9.2
236	25.9

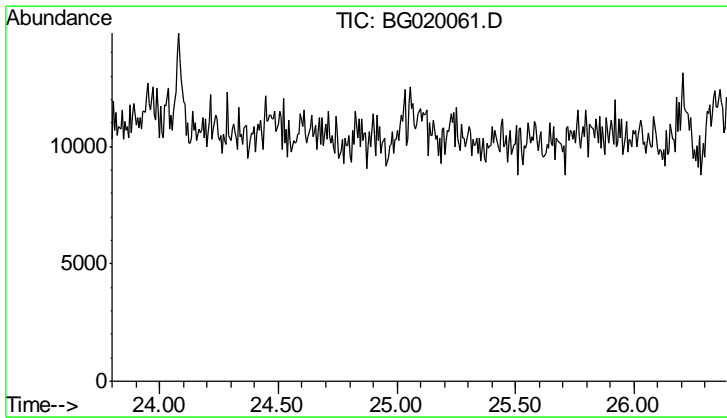
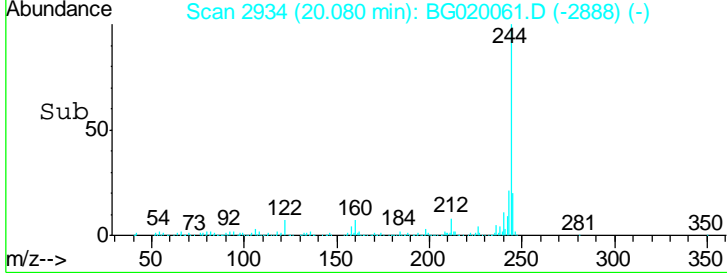
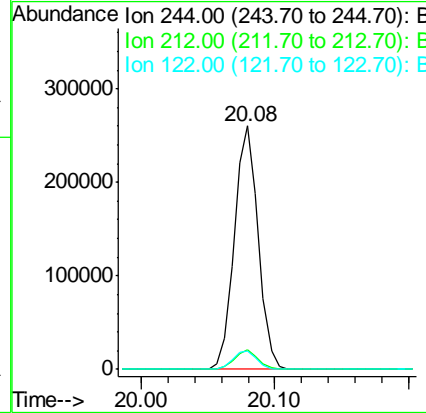
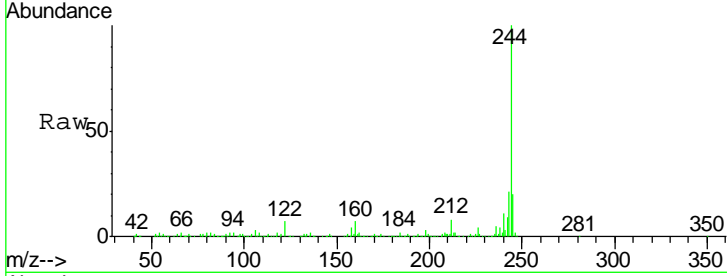




#78
 Terphenyl-d14
 Concen: 0.00 ng
 RT: 20.08 min Scan# 2934
 Delta R.T. -0.03 min
 Lab File: BG020061.D
 Acq: 10 Dec 2015 2:25

Instrument :
 BNA_G
ClientSampled :
 1511243912

Tgt Ion	Resp	Lower	Upper
244	100		
212	7.8	6.9	10.3
122	7.3	10.2	15.2#



#86
 Perylene-d12
 Concen: 0.00 ng
 Expected RT: 25.09 min
 Lab File: BG020061.D
 Acq: 10 Dec 2015 2:25

Tgt Ion	Exp Ratio
264	100
260	23.1
265	21.5

