

Data Path : Z:\HPCHEM1\BNA_G\DATA\BG121016\
 Data File : BG025082.D
 Acq On : 10 Dec 2016 23:51
 Operator : UM/SJ
 Sample : H5905-09
 Misc :
 ALS Vial : 18 Sample Multiplier: 1

Instrument :
 BNA_G
 ClientSampled :
 DA809

Manual Integrations
 APPROVED

Sohil
 12/12/2016 4:29:51 PM

Quant Time: Dec 12 04:52:57 2016
 Quant Method : Z:\HPCHEM1\BNA_G\METHODS\SOM02.2-EPA-BG113016.M
 Quant Title : SVOA CALIBRATION
 QLast Update : Mon Dec 12 04:23:16 2016
 Response via : Initial Calibration

Internal Standards	R.T.	QIon	Response	Conc	Units	Dev(Min)
1) 1,4-Dichlorobenzene-d4	8.24	152	64249	20.00	ng/ul	0.00
18) Naphthalene-d8	11.06	136	314434	20.00	ng/ul	0.00
35) Acenaphthene-d10	14.85	164	268634	20.00	ng/ul	0.00
61) Phenanthrene-d10	17.60	188	612867	20.00	ng/ul	0.00
75) Chrysene-d12	21.89	240	753143	20.00	ng/ul	0.00
83) Perylene-d12	25.29	264	771407	20.00	ng/ul	0.00

System Monitoring Compounds

3) 1,4-Dioxane-d8	3.59	96	5096	4.10	ng/uL	0.00
5) Phenol-d5	7.38	99	121665	21.95	ng/ul	0.00
7) Bis-(2-Chloroethyl)ether-d	7.54	67	95349	27.81	ng/ul	0.00
9) 2-Chlorophenol-d4	7.76	132	91642	23.64	ng/ul	0.00
13) 4-Methylphenol-d8	8.93	113	109378	23.61	ng/ul	0.00
19) Nitrobenzene-d5	9.41	128	50637	22.74	ng/ul	0.00
22) 2-Nitrophenol-d4	10.14	143	59524	21.44	ng/ul	0.00
26) 2,4-Dichlorophenol-d3	10.68	165	114790	21.50	ng/ul	0.00
29) 4-Chloroaniline-d4	11.20	131	104855	19.99	ng/ul	0.00
43) Dimethylphthalate-d6	14.25	166	464276	25.13	ng/ul	0.00
46) Acenaphthylene-d8	14.55	160	471827	23.31	ng/ul	0.00
51) 4-Nitrophenol-d4	15.05	143	54953	17.30	ng/ul	0.00
57) Fluorene-d10	15.84	176	400542	23.03	ng/ul	0.00
62) 4,6-Dinitro-2-methylphenol	15.96	200	84435	22.28	ng/ul	0.00
70) Anthracene-d10	17.70	188	618560	23.91	ng/ul	0.00
76) Pyrene-d10	19.97	212	725420	23.38	ng/ul	0.00
87) Benzo(a)pyrene-d12	25.07	264	720617	23.06	ng/ul	0.00

Target Compounds

Target Compounds	R.T.	QIon	Response	Conc	Units	Qvalue
6) Phenol	7.40	94	28636	5.03	ng/ul#	89
28) Naphthalene	11.11	128	22864	1.56	ng/ul#	95
34) 2-Methylnaphthalene	12.70	142	28361	2.46	ng/ul	90
44) Dimethylphthalate	14.30	163	204255	11.25	ng/ul	99
69) Phenanthrene	17.64	178	67678	2.31	ng/ul#	92
73) Di-n-butylphthalate	18.53	149	271644	8.58	ng/ul	99
74) Fluoranthene	19.64	202	134286	3.86	ng/ul#	96
77) Pyrene	20.00	202	152798	4.22	ng/ul	98
80) Benzo(a)anthracene	21.87	228	158467	4.05	ng/ul	95
81) Bis(2-ethylhexyl)phthalate	21.73	149	3978120	203.90	ng/ul#	70
82) Chrysene	21.94	228	259056	7.08	ng/ul	95
85) Benzo(b)fluoranthene	24.21	252	444077	11.61	ng/ul#	95
88) Benzo(a)pyrene	25.14	252	229193	6.23	ng/ul#	96
89) Indeno(1,2,3-cd)pyrene	29.20	276	231588m	5.07	ng/ul	
91) Benzo(g,h,i)perylene	30.45	276	191977m	5.03	ng/ul	

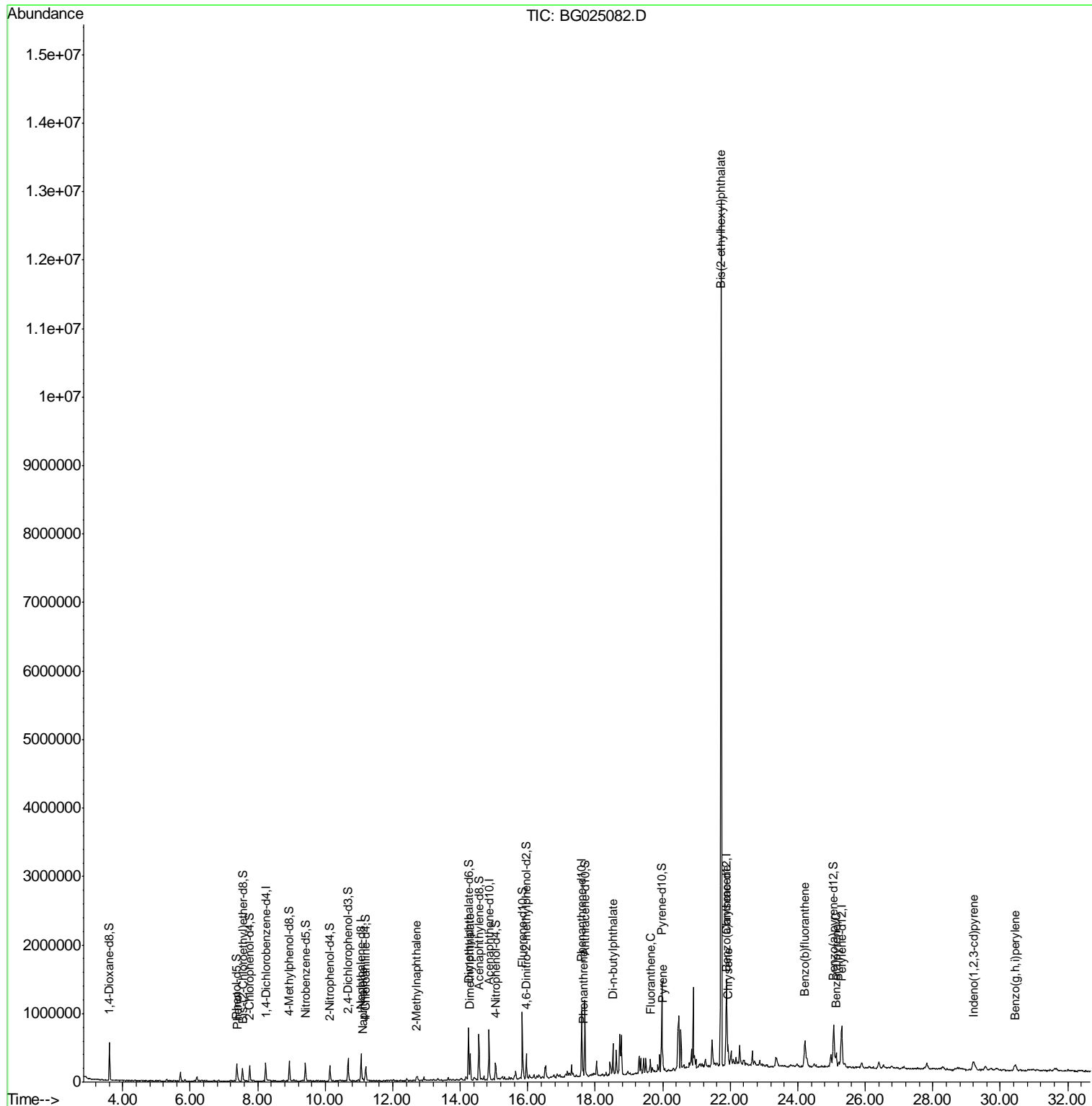
(#) = qualifier out of range (m) = manual integration (+) = signals summed

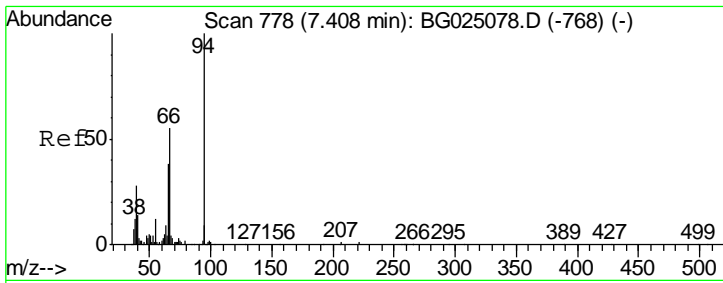
Data Path : Z:\HPCHEM1\BNA_G\DATA\BG121016\
 Data File : BG025082.D
 Acq On : 10 Dec 2016 23:51
 Operator : UM/SJ
 Sample : H5905-09
 Misc :
 ALS Vial : 18 Sample Multiplier: 1

Instrument :
 BNA_G
 ClientSampled :
 DA809

Manual Integrations
 APPROVED
 Sohil
 12/12/2016 4:29:51 PM

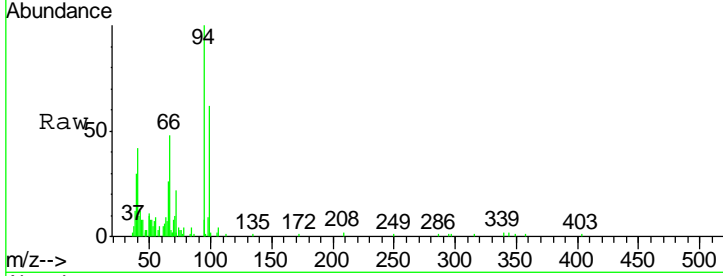
Quant Time: Dec 12 04:52:57 2016
 Quant Method : Z:\HPCHEM1\BNA_G\METHODS\SOM02.2-EPA-BG113016.M
 Quant Title : SVOA CALIBRATION
 QLast Update : Mon Dec 12 04:23:16 2016
 Response via : Initial Calibration





#6
 Phenol
 Concen: 5.03 ng/ul
 RT: 7.40 min Scan# 777
 Delta R.T. -0.00 min
 Lab File: BG025082.D
 Acq: 10 Dec 2016 23:51

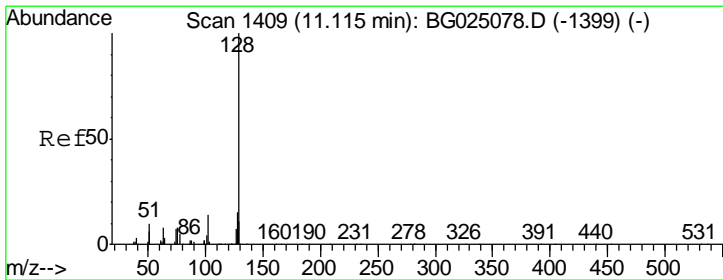
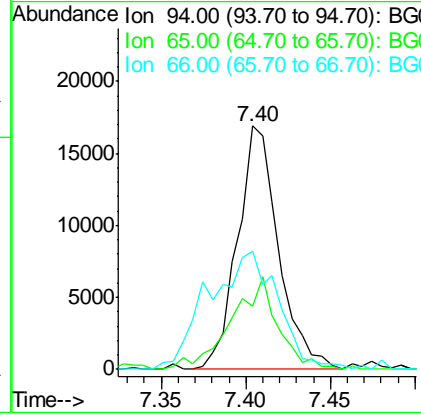
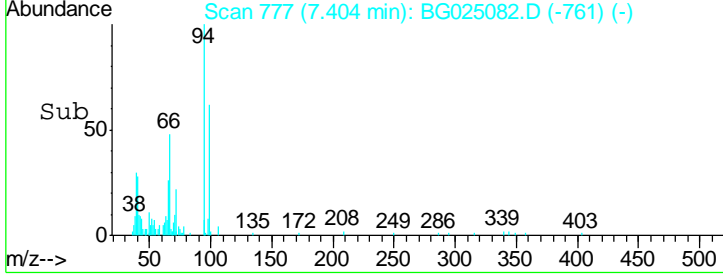
Instrument :
 BNA_G
ClientSampled :
 DA809



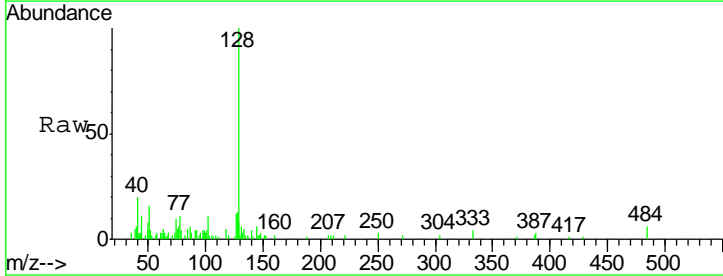
Tgt Ion	Resp	Lower	Upper
94	100		
65	26.2	26.8	40.2#
66	48.4	44.4	66.6

Manual Integrations
APPROVED

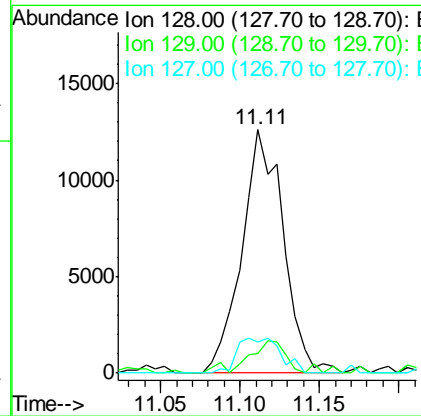
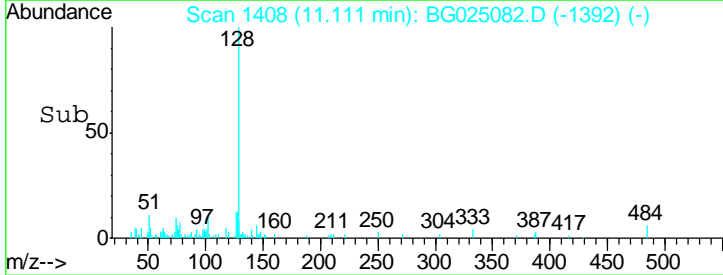
Sohil
 12/12/2016 4:29:51 PM

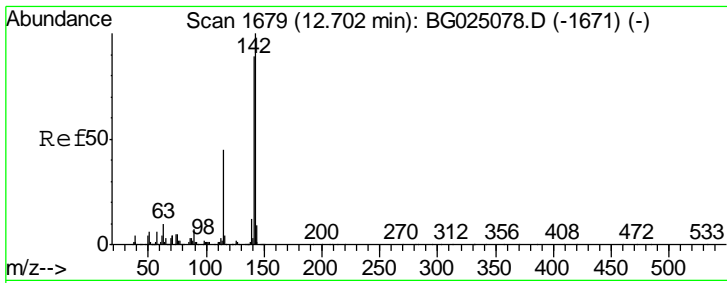


#28
 Naphthalene
 Concen: 1.56 ng/ul
 RT: 11.11 min Scan# 1408
 Delta R.T. -0.00 min
 Lab File: BG025082.D
 Acq: 10 Dec 2016 23:51



Tgt Ion	Resp	Lower	Upper
128	100		
129	8.1	9.4	14.2#
127	12.8	10.3	15.5





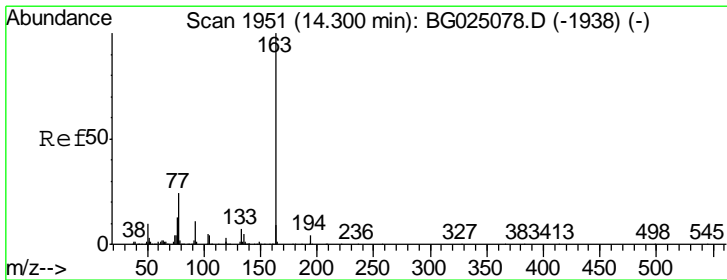
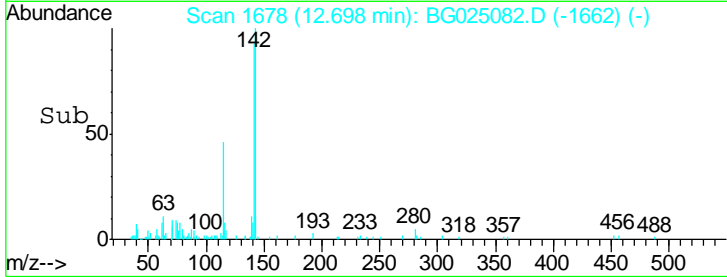
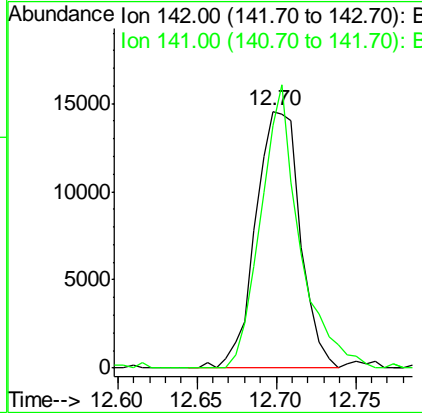
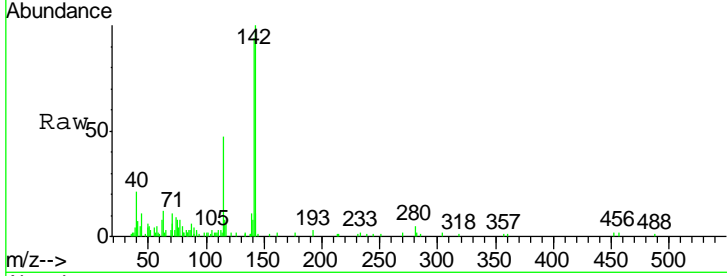
#34
 2-Methylnaphthalene
 Concen: 2.46 ng/ul
 RT: 12.70 min Scan# 1678
 Delta R.T. -0.00 min
 Lab File: BG025082.D
 Acq: 10 Dec 2016 23:51

Instrument :
 BNA_G
 ClientSampled :
 DA809

Tgt Ion	Ratio	Lower	Upper
142	100		
141	94.5	68.6	102.8

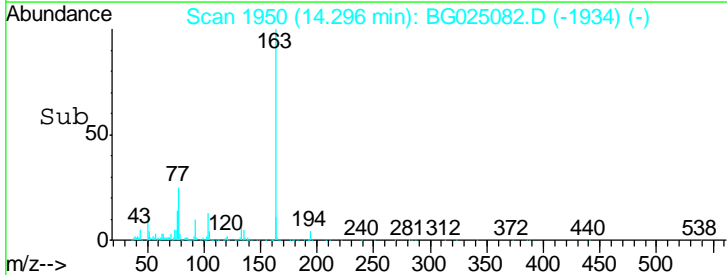
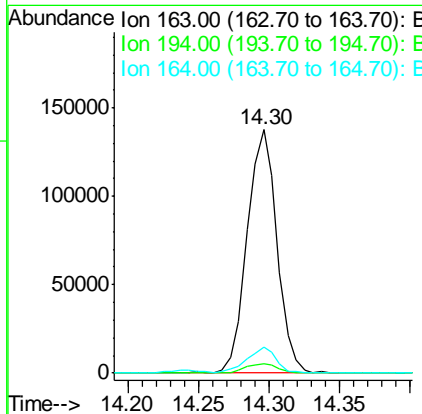
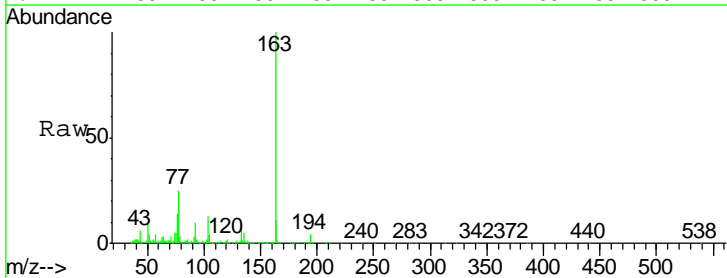
Manual Integrations
 APPROVED

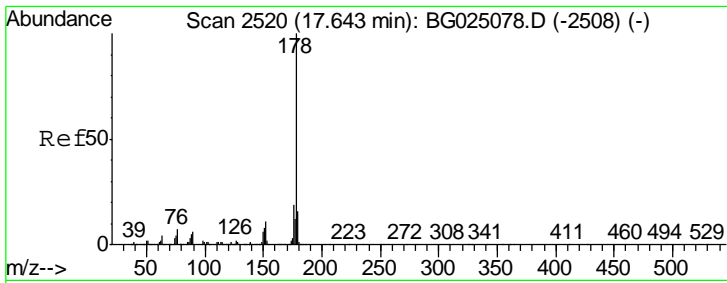
Sohil
 12/12/2016 4:29:51 PM



#44
 Dimethylphthalate
 Concen: 11.25 ng/ul
 RT: 14.30 min Scan# 1950
 Delta R.T. -0.00 min
 Lab File: BG025082.D
 Acq: 10 Dec 2016 23:51

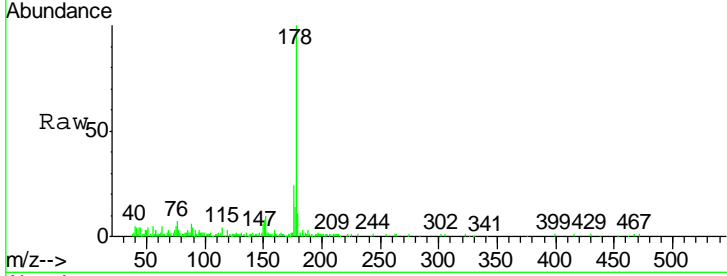
Tgt Ion	Ratio	Lower	Upper
163	100		
194	3.8	3.4	5.0
164	10.9	9.0	13.4





#69
 Phenanthrene
 Concen: 2.31 ng/ul
 RT: 17.64 min Scan# 2520
 Delta R.T. 0.00 min
 Lab File: BG025082.D
 Acq: 10 Dec 2016 23:51

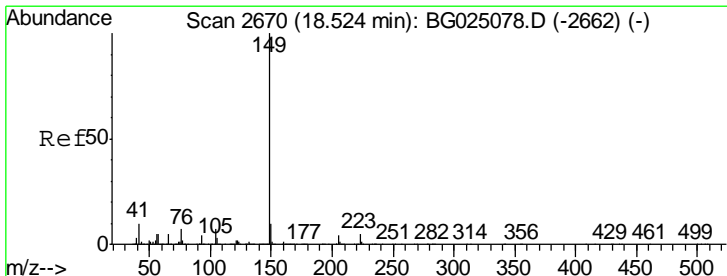
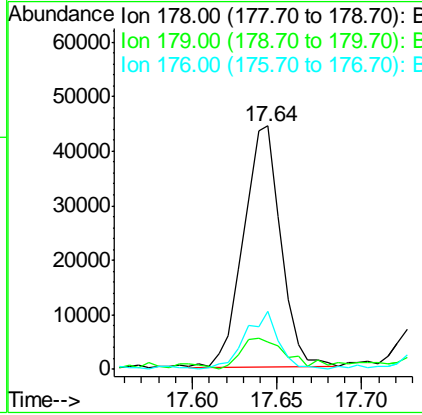
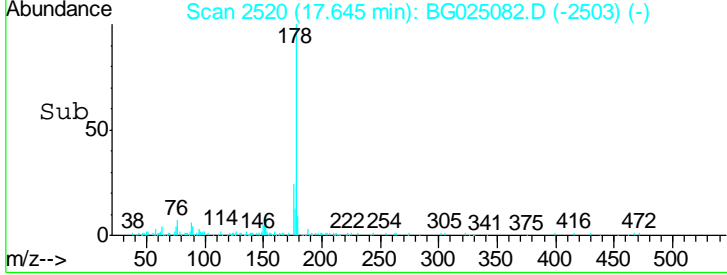
Instrument :
 BNA_G
ClientSampled :
 DA809



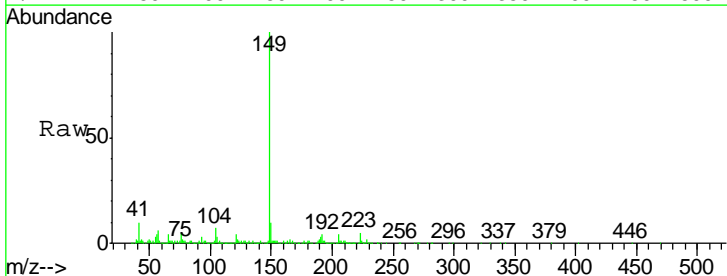
Tgt Ion:178 Resp: 67678

Ion	Ratio	Lower	Upper
178	100		
179	11.4	12.4	18.6#
176	23.8	16.5	24.7

Manual Integrations
APPROVED
 Sohil
 12/12/2016 4:29:51 PM

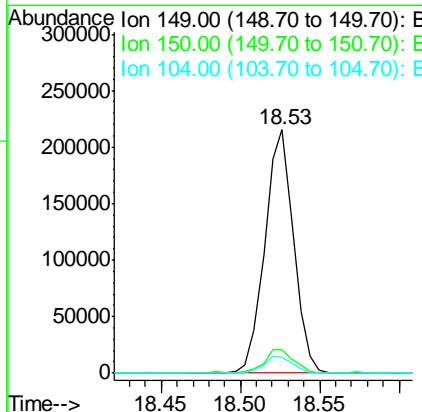
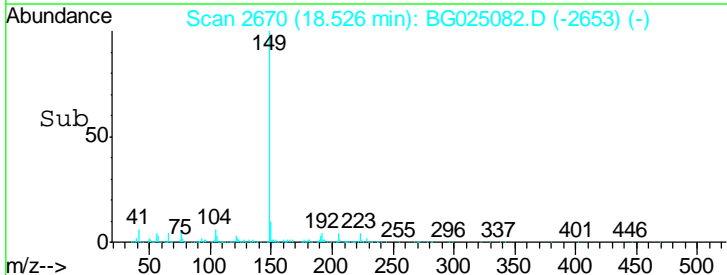


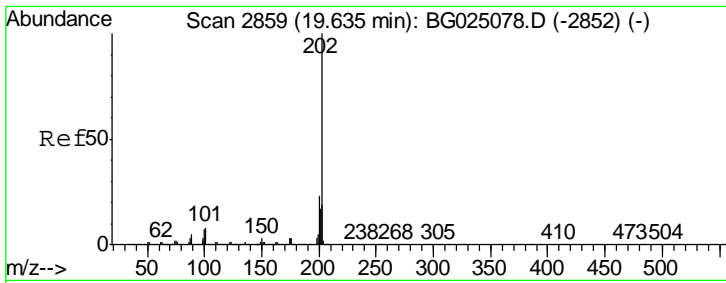
#73
 Di-n-butylphthalate
 Concen: 8.58 ng/ul
 RT: 18.53 min Scan# 2670
 Delta R.T. 0.00 min
 Lab File: BG025082.D
 Acq: 10 Dec 2016 23:51



Tgt Ion:149 Resp: 271644

Ion	Ratio	Lower	Upper
149	100		
150	9.8	7.9	11.9
104	6.6	5.8	8.8





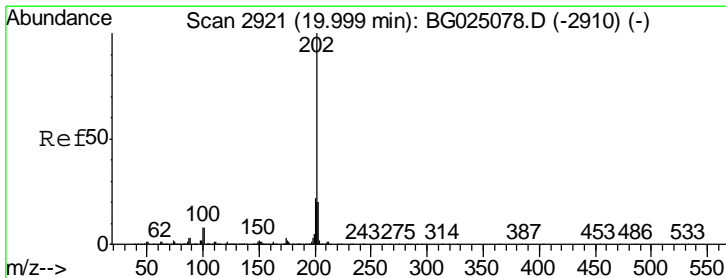
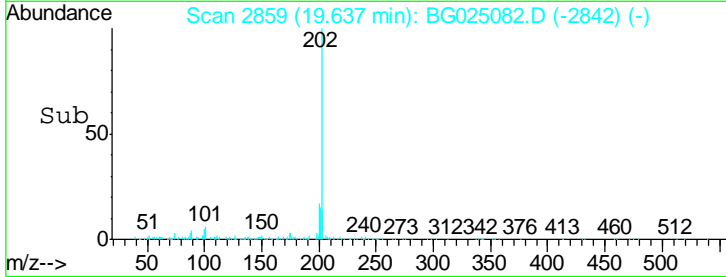
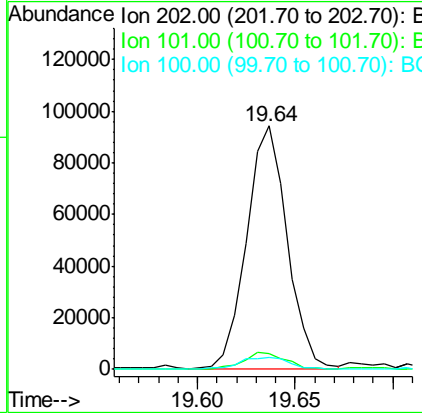
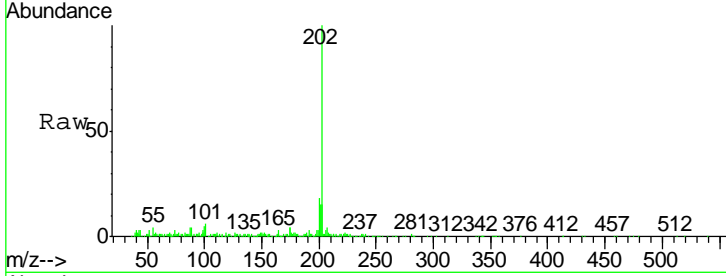
#74
 Fluoranthene
 Concen: 3.86 ng/ul
 RT: 19.64 min Scan# 2859
 Delta R.T. 0.00 min
 Lab File: BG025082.D
 Acq: 10 Dec 2016 23:51

Instrument :
 BNA_G
 ClientSampled :
 DA809

Tgt Ion	Resp	Lower	Upper
202	134286		
101	6.4	6.2	9.2
100	4.7	5.2	7.8

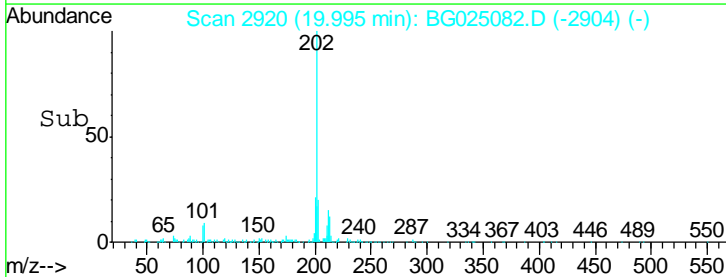
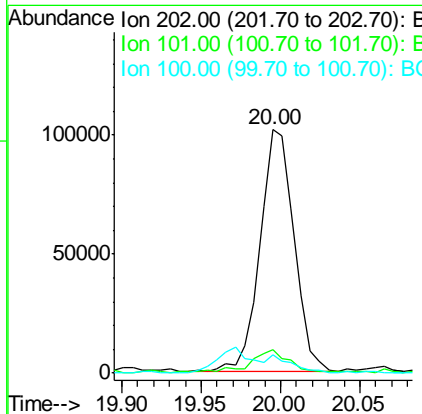
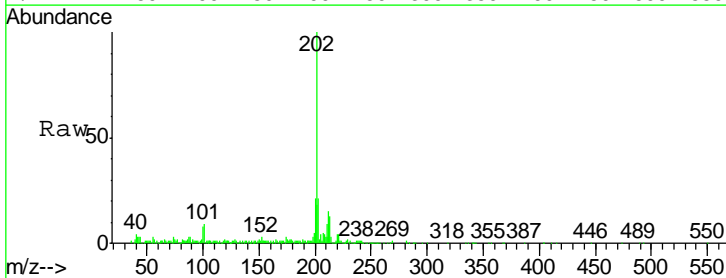
Manual Integrations
 APPROVED

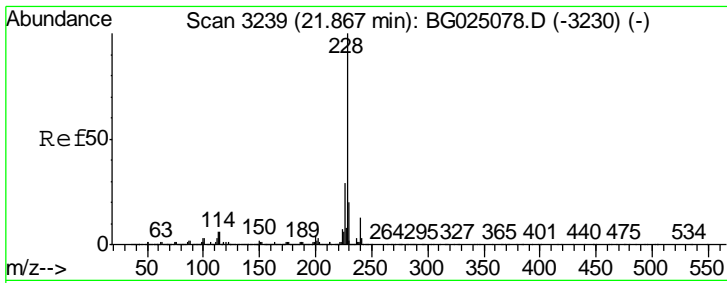
Sohil
 12/12/2016 4:29:51 PM



#77
 Pyrene
 Concen: 4.22 ng/ul
 RT: 20.00 min Scan# 2920
 Delta R.T. -0.00 min
 Lab File: BG025082.D
 Acq: 10 Dec 2016 23:51

Tgt Ion	Resp	Lower	Upper
202	152798		
101	9.5	6.9	10.3
100	7.7	6.6	10.0





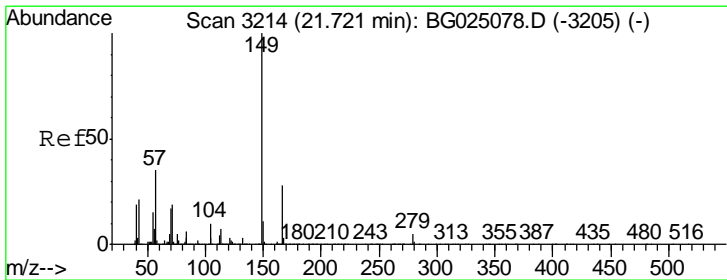
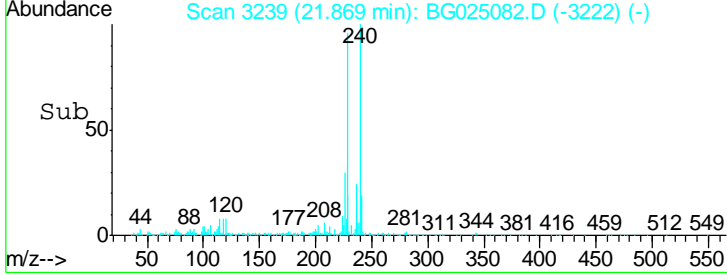
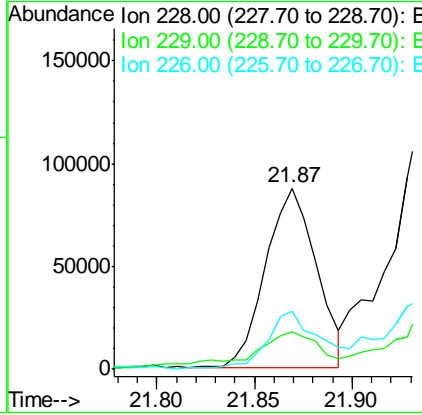
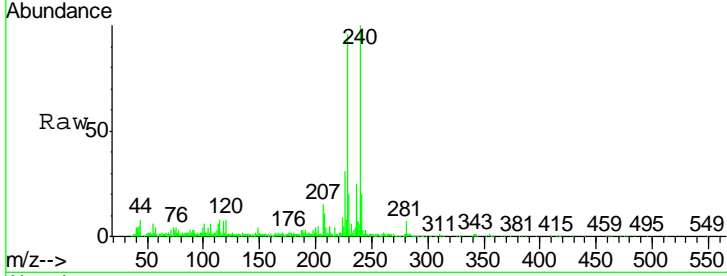
#80
 Benzo(a)anthracene
 Concen: 4.05 ng/ul
 RT: 21.87 min Scan# 3239
 Delta R.T. 0.00 min
 Lab File: BG025082.D
 Acq: 10 Dec 2016 23:51

Instrument :
 BNA_G
 ClientSampled :
 DA809

Tgt Ion	Resp	Lower	Upper
228	100		
229	20.5	16.3	24.5
226	31.8	21.9	32.9

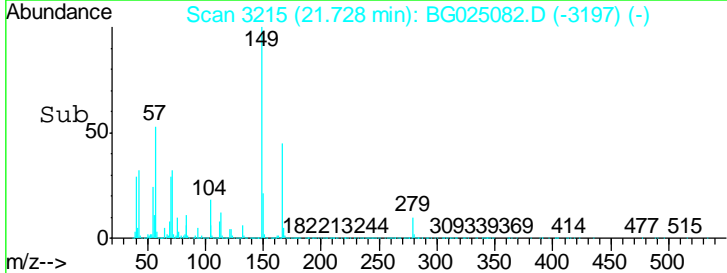
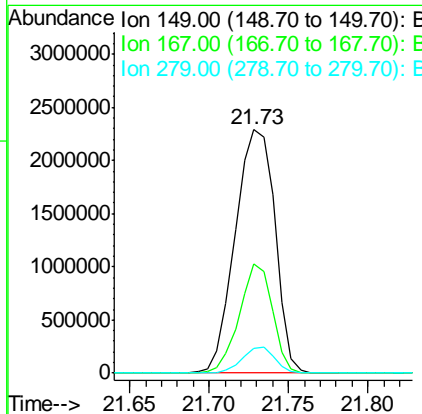
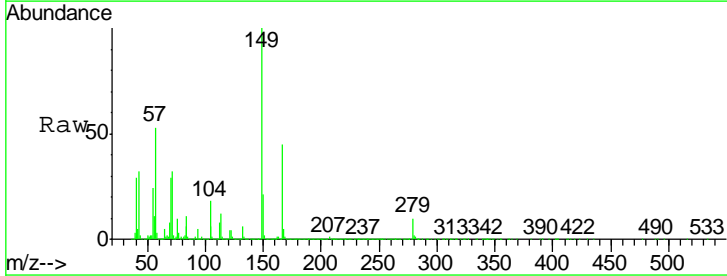
Manual Integrations
 APPROVED

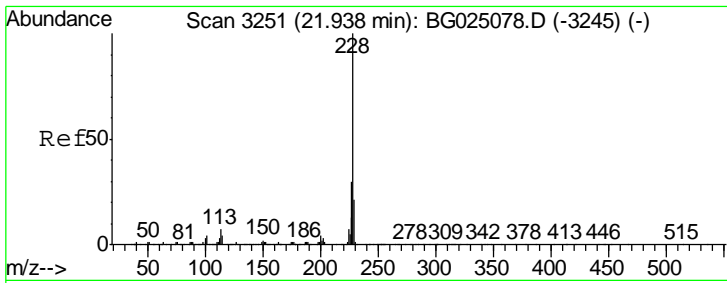
Sohil
 12/12/2016 4:29:51 PM



#81
 Bis(2-ethylhexyl)phthalate
 Concen: 203.90 ng/ul
 RT: 21.73 min Scan# 3215
 Delta R.T. 0.01 min
 Lab File: BG025082.D
 Acq: 10 Dec 2016 23:51

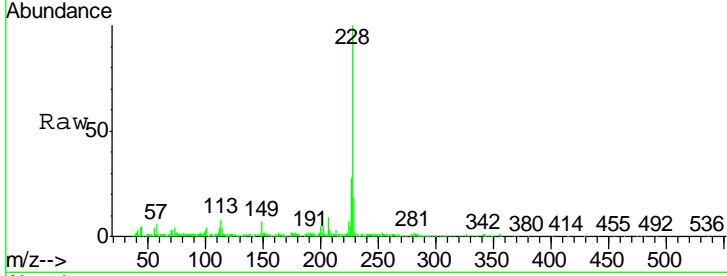
Tgt Ion	Resp	Lower	Upper
149	100		
167	44.6	21.8	32.8#
279	10.3	4.5	6.7#





#82
 Chrysene
 Concen: 7.08 ng/ul
 RT: 21.94 min Scan# 3251
 Delta R.T. 0.00 min
 Lab File: BG025082.D
 Acq: 10 Dec 2016 23:51

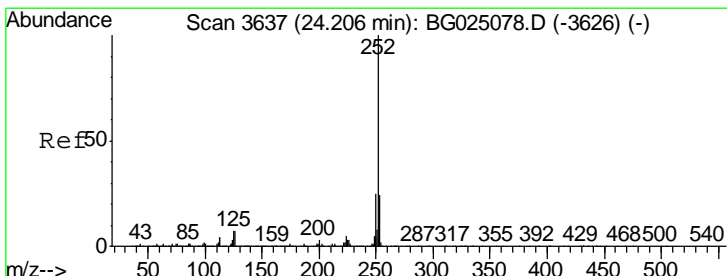
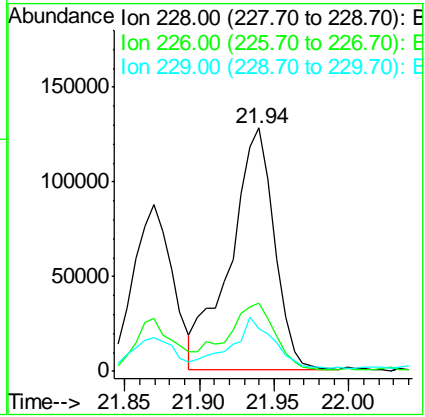
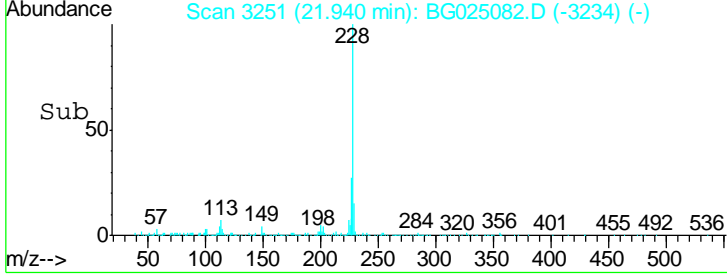
Instrument :
 BNA_G
 ClientSampled :
 DA809



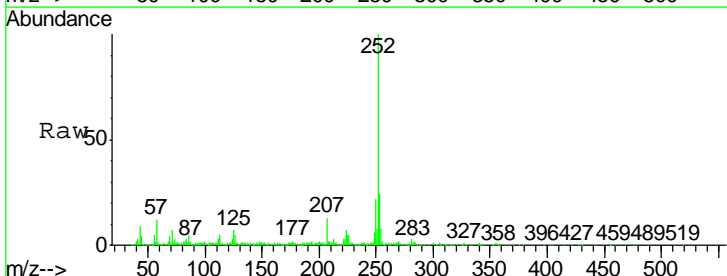
Tgt Ion: 228 Resp: 259056

Ion	Ratio	Lower	Upper
228	100		
226	27.9	24.0	36.0
229	17.6	16.9	25.3

Manual Integrations
 APPROVED
 Sohil
 12/12/2016 4:29:51 PM

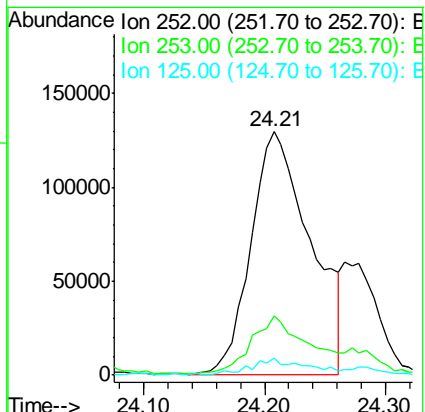
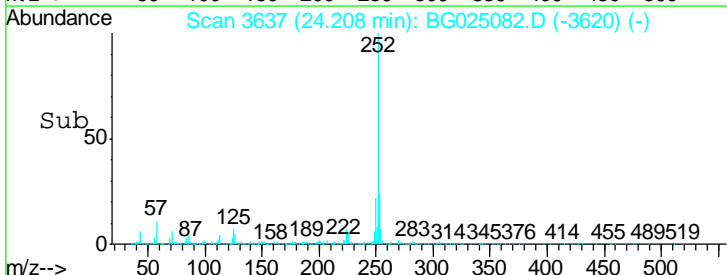


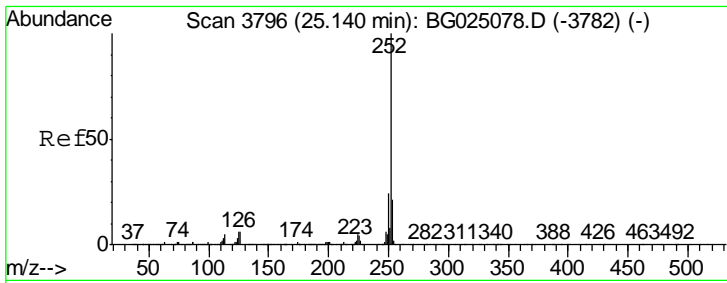
#85
 Benzo(b)fluoranthene
 Concen: 11.61 ng/ul
 RT: 24.21 min Scan# 3637
 Delta R.T. 0.00 min
 Lab File: BG025082.D
 Acq: 10 Dec 2016 23:51



Tgt Ion: 252 Resp: 444077

Ion	Ratio	Lower	Upper
252	100		
253	24.2	17.7	26.5
125	6.8	4.0	6.0#





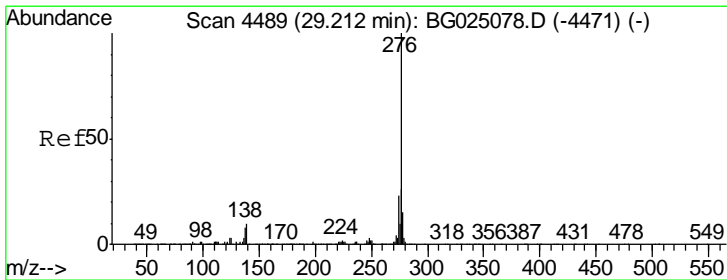
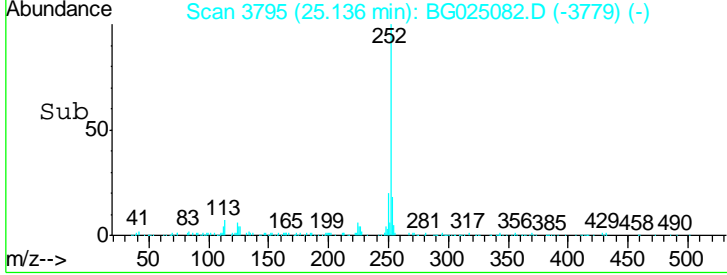
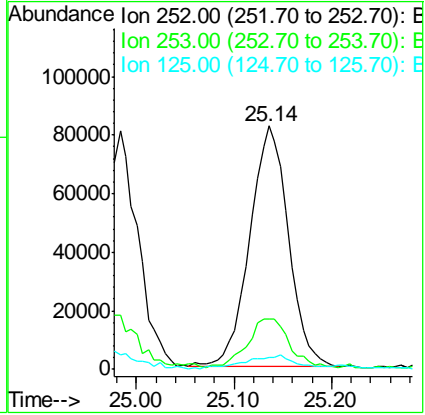
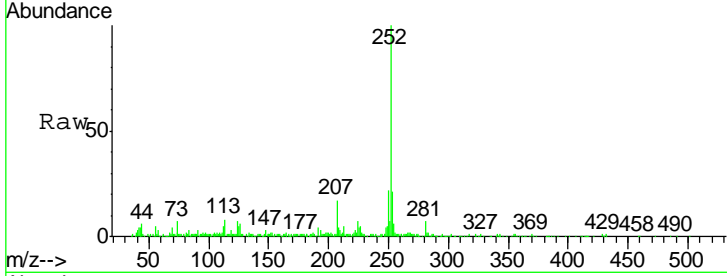
#88
 Benzo(a)pyrene
 Concen: 6.23 ng/ul
 RT: 25.14 min Scan# 3795
 Delta R.T. -0.00 min
 Lab File: BG025082.D
 Acq: 10 Dec 2016 23:51

Instrument : BNA_G
 ClientSampled : DA809

Tgt Ion	Resp	Lower	Upper
252	100		
253	20.7	17.8	26.6
125	4.9	5.4	8.0#

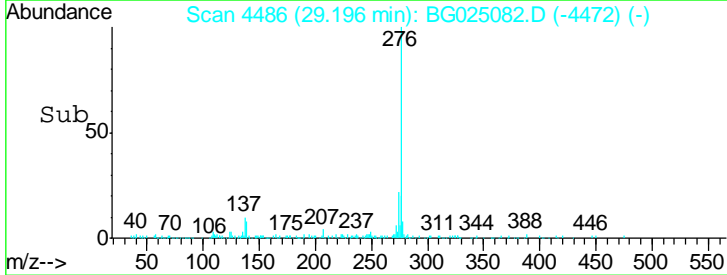
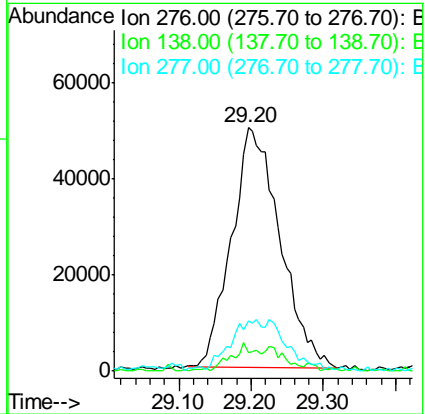
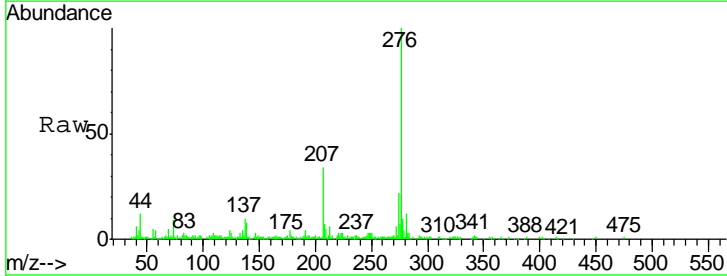
Manual Integrations
 APPROVED

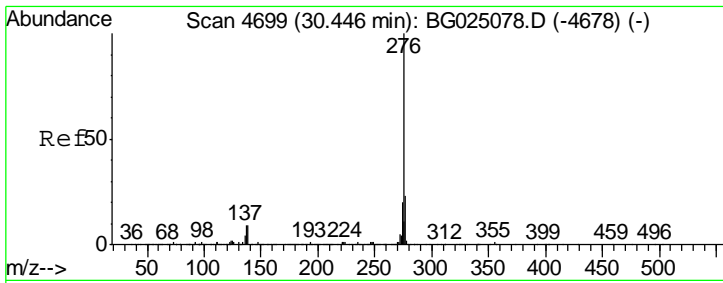
Sohil
 12/12/2016 4:29:51 PM



#89
 Indeno(1,2,3-cd)pyrene
 Concen: 5.07 ng/ul m
 RT: 29.20 min Scan# 4486
 Delta R.T. -0.02 min
 Lab File: BG025082.D
 Acq: 10 Dec 2016 23:51

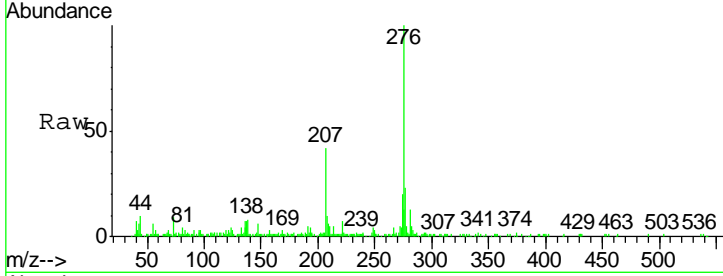
Tgt Ion	Resp	Lower	Upper
276	100		
138	7.7	8.2	12.4#
277	20.7	18.6	28.0





#91
 Benzo(g,h,i)perylene
 Concen: 5.03 ng/ul m
 RT: 30.45 min Scan# 4699
 Delta R.T. 0.00 min
 Lab File: BG025082.D
 Acq: 10 Dec 2016 23:51

Instrument :
 BNA_G
ClientSampled :
 DA809



Tgt Ion: 276 Resp: 191977

Ion	Ratio	Lower	Upper
276	100		
138	8.0	8.6	12.8#
277	23.5	17.6	26.4

Manual Integrations
APPROVED

Sohil
 12/12/2016 4:29:51 PM

