

Data Path : Z:\svoasrv\HPCHEM1\BNA_G\Data\BG121024\
 Data File : BG063643.D
 Acq On : 10 Dec 2024 22:20
 Operator : RC/JU
 Sample : P5109-18
 Misc :
 ALS Vial : 12 Sample Multiplier: 1

Instrument :
 BNA_G
 ClientSampleId :

Quant Time: Dec 10 23:27:37 2024
 Quant Method : Z:\svoasrv\HPCHEM1\BNA_G\Methods\SFAM-EPA-BG120624.MA.M
 Quant Title : SVOA CALIBRATION
 QLast Update : Fri Dec 06 15:14:46 2024
 Response via : Initial Calibration

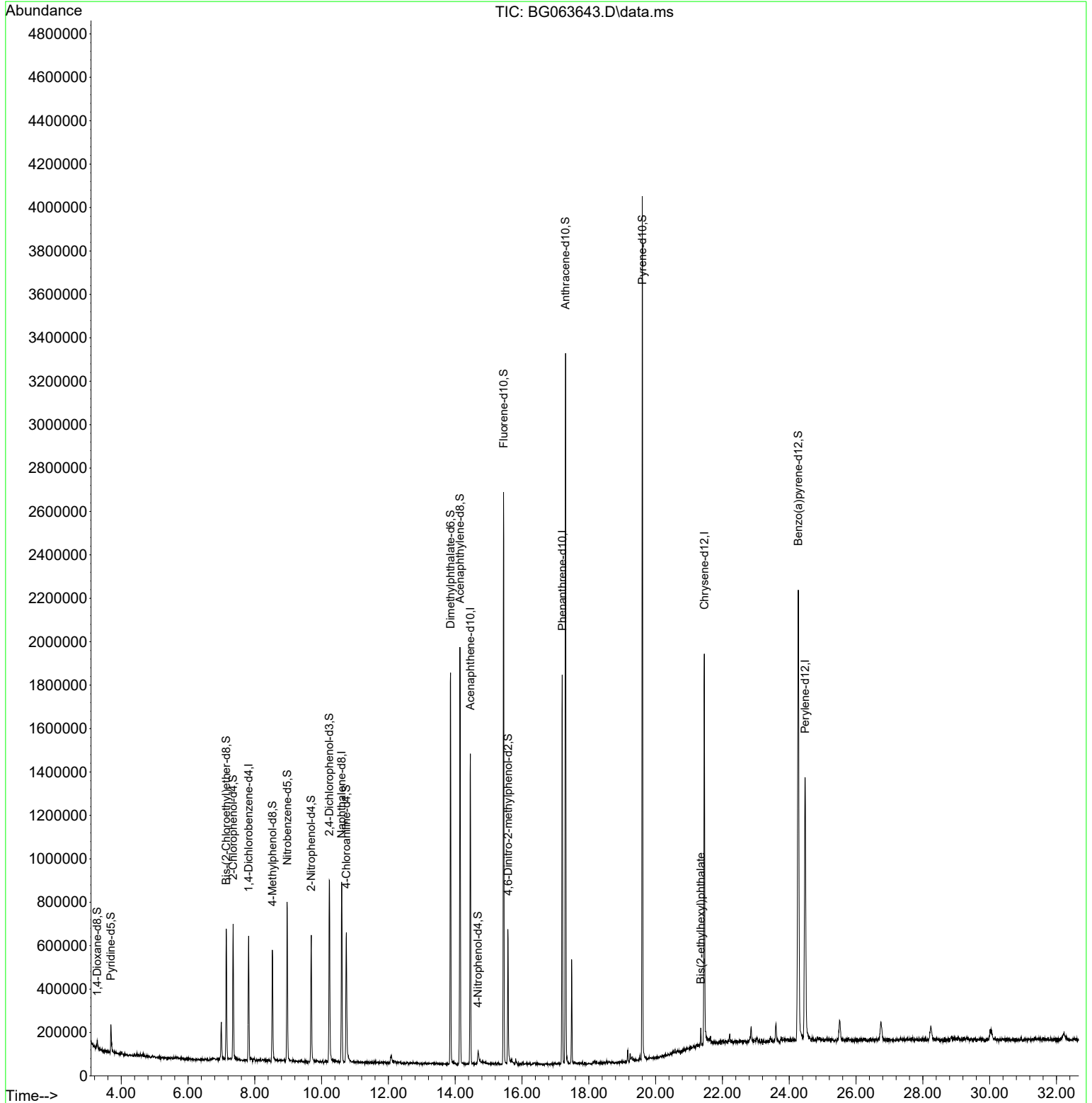
Compound	R.T.	QIon	Response	Conc	Units	Dev(Min)
Internal Standards						
1) 1,4-Dichlorobenzene-d4	7.814	152	153126	20.000	ng/ul	0.00
20) Naphthalene-d8	10.599	136	652951	20.000	ng/ul	-0.01
38) Acenaphthene-d10	14.453	164	489192	20.000	ng/ul	0.00
64) Phenanthrene-d10	17.203	188	1115418	20.000	ng/ul	#-0.01
79) Chrysene-d12	21.457	240	1048621	20.000	ng/ul	#-0.02
88) Perylene-d12	24.477	264	1112498	20.000	ng/ul	-0.03
System Monitoring Compounds						
3) 1,4-Dioxane-d8	3.278	96	18377	5.298	ng/uL	0.00
4) Pyridine-d5	3.689	84	90047	7.018	ng/ul	0.00
7) Phenol-d5	7.050	99	1888	0.125	ng/ul	0.05
9) Bis-(2-Chloroethyl)eth...	7.144	67	298286	29.262	ng/ul	0.00
11) 2-Chlorophenol-d4	7.350	132	245748	27.671	ng/ul	0.00
15) 4-Methylphenol-d8	8.525	113	193282	17.291	ng/ul	0.00
21) Nitrobenzene-d5	8.971	128	145273	31.697	ng/ul	0.00
24) 2-Nitrophenol-d4	9.688	143	164077	31.284	ng/ul	0.00
28) 2,4-Dichlorophenol-d3	10.229	165	316256	28.006	ng/ul	0.00
31) 4-Chloroaniline-d4	10.740	131	316210	23.171	ng/ul	0.00
46) Dimethylphthalate-d6	13.860	166	1167349	32.834	ng/ul	0.00
49) Acenaphthylene-d8	14.142	160	1205756	31.027	ng/ul	-0.01
54) 4-Nitrophenol-d4	14.682	143	17417	3.826	ng/ul	0.00
60) Fluorene-d10	15.446	176	1011622	28.866	ng/ul	-0.01
65) 4,6-Dinitro-2-methylph...	15.581	200	146114	23.188	ng/ul	0.00
73) Anthracene-d10	17.303	188	1927152	37.838	ng/ul	-0.01
81) Pyrene-d10	19.600	212	2232669	38.412	ng/ul	-0.01
92) Benzo(a)pyrene-d12	24.271	264	2188654	39.170	ng/ul	-0.02
Target Compounds						
86) Bis(2-ethylhexyl)phtha...	21.351	149	29606	1.347	ng/ul#	99

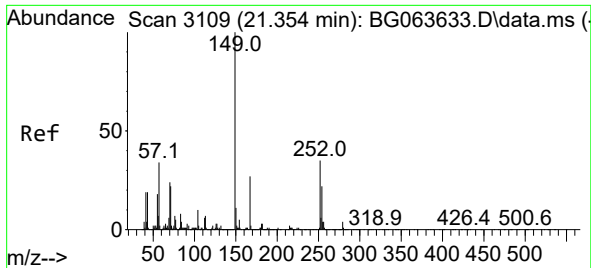
(#) = qualifier out of range (m) = manual integration (+) = signals summed

Data Path : Z:\svoasrv\HPCHEM1\BNA_G\Data\BG121024\
 Data File : BG063643.D
 Acq On : 10 Dec 2024 22:20
 Operator : RC/JU
 Sample : P5109-18
 Misc :
 ALS Vial : 12 Sample Multiplier: 1

Instrument :
 BNA_G
 ClientSampleId :

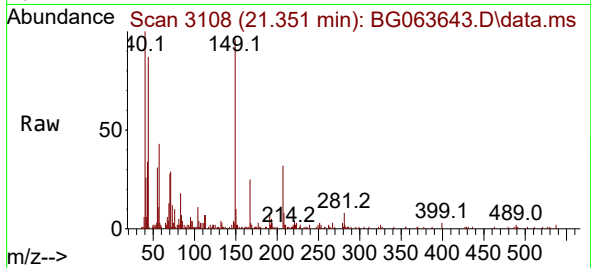
Quant Time: Dec 10 23:27:37 2024
 Quant Method : Z:\svoasrv\HPCHEM1\BNA_G\Methods\SFAM-EPA-BG120624.MA.M
 Quant Title : SVOA CALIBRATION
 QLast Update : Fri Dec 06 15:14:46 2024
 Response via : Initial Calibration





#86
 Bis(2-ethylhexyl)phthalate
 Concen: 1.347 ng/ul
 RT: 21.351 min Scan# 31
 Delta R.T. -0.017 min
 Lab File: BG063643.D
 Acq: 10 Dec 2024 22:20

Instrument :
 BNA_G
 ClientSampleId :



Tgt Ion:149 Resp: 29606

Ion	Ratio	Lower	Upper
149	100		
167	26.3	21.1	31.7
279	3.0	4.1	6.1#

