

Data Path : Z:\svoasrv\HPCHEM1\BNA_G\Data\BG121024\
 Data File : BG063644.D
 Acq On : 10 Dec 2024 22:58
 Operator : RC/JU
 Sample : P5109-19
 Misc :
 ALS Vial : 13 Sample Multiplier: 1

Instrument :
 BNA_G
 ClientSampleId :
 BHJA8

Integration Parameters: LSCINT.P

Integrator: RTE
 Smoothing : OFF
 Sampling : 1
 Start Thrs : 0.2
 Stop Thrs : 0

Filtering: 5
 Min Area: 0.1 % of largest Peak
 Max Peaks: 100
 Peak Location: TOP

If leading or trailing edge < 100 prefer < Baseline drop else tangent >
 Peak separation: 5

Method : Z:\svoasrv\HPCHEM1\BNA_G\Methods\SFAM-EPA-BG120624.MA.M
 Title : SVOA CALIBRATION

Signal : TIC: BG063644.D\data.ms

peak #	R.T. min	first scan	max scan	last scan	PK TY	peak height	corr. area	corr. % max.	% of total
1	3.691	98	102	110	rBV2	128343	221362	3.49%	0.434%
2	4.408	222	224	228	rBV4	14117	18622	0.29%	0.036%
3	4.842	296	298	299	rBV	13241	9385	0.15%	0.018%
4	5.113	342	344	347	rBV3	11638	13589	0.21%	0.027%
5	5.248	365	367	370	rBV2	12663	13291	0.21%	0.026%
6	6.676	607	610	611	rBV	9961	8895	0.14%	0.017%
7	6.811	632	633	636	rBV2	11341	10450	0.16%	0.020%
8	6.993	655	664	673	rBV2	155439	306165	4.83%	0.600%
9	7.146	684	690	702	rBV	619464	1062287	16.77%	2.080%
10	7.351	719	725	732	rVB	599774	1020494	16.11%	1.999%
11	7.733	788	790	792	rBV2	8362	8683	0.14%	0.017%
12	7.815	795	804	810	rBV	522213	868757	13.71%	1.701%
13	8.526	917	925	935	rBV2	516180	932191	14.71%	1.826%
14	8.802	971	972	976	rVB3	9704	9696	0.15%	0.019%
15	8.838	976	978	979	rBV	10812	8592	0.14%	0.017%
16	8.967	993	1000	1014	rBV2	778456	1396931	22.05%	2.736%
17	9.396	1070	1073	1076	rVB3	18962	20040	0.32%	0.039%
18	9.431	1077	1079	1085	rVB3	8603	9020	0.14%	0.018%
19	9.690	1116	1123	1134	rBV2	598688	1103046	17.41%	2.160%
20	9.989	1173	1174	1177	rVB2	14993	10852	0.17%	0.021%
21	10.077	1186	1189	1191	rVB	9306	8916	0.14%	0.017%
22	10.148	1199	1201	1204	rBV2	9319	11892	0.19%	0.023%
23	10.230	1208	1215	1229	rBV	905911	1695312	26.76%	3.320%
24	10.600	1272	1278	1287	rVB	721247	1294657	20.44%	2.536%
25	10.741	1294	1302	1315	rBV	634708	1265587	19.98%	2.479%
26	11.047	1352	1354	1357	rVB2	7910	9290	0.15%	0.018%
27	11.670	1458	1460	1463	rVB	12996	13099	0.21%	0.026%
28	11.881	1494	1496	1500	rVB4	10315	12485	0.20%	0.024%
29	12.198	1546	1550	1551	rBV2	11681	9833	0.16%	0.019%
30	12.633	1623	1624	1628	rVB3	7655	8965	0.14%	0.018%
31	13.186	1715	1718	1722	rVB3	7006	8665	0.14%	0.017%
32	13.280	1732	1734	1739	rVB2	8001	9689	0.15%	0.019%
33	13.368	1746	1749	1751	rVB2	9114	10247	0.16%	0.020%
34	13.403	1751	1755	1758	rBV2	8931	13286	0.21%	0.026%
35	13.597	1786	1788	1790	rBV2	9799	11288	0.18%	0.022%
36	13.656	1793	1798	1804	rVV3	9717	17063	0.27%	0.033%

Data Path : Z:\svoasrv\HPCHEM1\BNA_G\Data\BG121024\
 Data File : BG063644.D
 Acq On : 10 Dec 2024 22:58
 Operator : RC/JU
 Sample : P5109-19
 Misc :
 ALS Vial : 13 Sample Multiplier: 1

Instrument :
 BNA_G
 ClientSampleId :
 BHJA8

Integration Parameters: LSCINT.P

Integrator: RTE
 Smoothing : OFF Filtering: 5
 Sampling : 1 Min Area: 0.1 % of largest Peak
 Start Thrs: 0.2 Max Peaks: 100
 Stop Thrs : 0 Peak Location: TOP

If leading or trailing edge < 100 prefer < Baseline drop else tangent >
 Peak separation: 5

Method : Z:\svoasrv\HPCHEM1\BNA_G\Methods\SFAM-EPA-BG120624.MA.M
 Title : SVOA CALIBRATION

37	13.855	1826	1832	1841	rBV	1905544	2798845	44.18%	5.481%
38	13.979	1850	1853	1855	rBV3	9717	10143	0.16%	0.020%
39	14.143	1875	1881	1890	rBV2	1962985	3110766	49.10%	6.092%
40	14.331	1908	1913	1914	rBV2	8786	10084	0.16%	0.020%
41	14.449	1926	1933	1943	rBV	1244366	1961341	30.96%	3.841%
42	14.690	1968	1974	1981	rBV7	50626	127872	2.02%	0.250%
43	14.860	1998	2003	2004	rBV3	10191	13962	0.22%	0.027%
44	15.265	2068	2072	2073	rBV3	9969	10583	0.17%	0.021%
45	15.307	2076	2079	2083	rVB6	8955	11726	0.19%	0.023%
46	15.448	2096	2103	2112	rBV	2888724	4235049	66.85%	8.294%
47	15.577	2119	2125	2133	rBV	667291	1028208	16.23%	2.014%
48	15.689	2140	2144	2145	rVB3	11907	11928	0.19%	0.023%
49	15.947	2184	2188	2190	rBV2	8847	9664	0.15%	0.019%
50	16.018	2197	2200	2204	rBV2	13401	17286	0.27%	0.034%
51	16.235	2233	2237	2239	rBV3	11094	11802	0.19%	0.023%
52	16.305	2246	2249	2255	rBV2	9745	21126	0.33%	0.041%
53	16.441	2270	2272	2278	rVB2	7697	11263	0.18%	0.022%
54	16.658	2305	2309	2310	rBV3	10005	11376	0.18%	0.022%
55	16.975	2359	2363	2365	rBV2	8466	13426	0.21%	0.026%
56	17.052	2374	2376	2379	rBV4	7497	8731	0.14%	0.017%
57	17.204	2395	2402	2411	rBV	1655497	2483093	39.19%	4.863%
58	17.304	2412	2419	2428	rVV	3414000	5183739	81.82%	10.152%
59	17.492	2450	2451	2456	rVB3	8980	12199	0.19%	0.024%
60	17.592	2464	2468	2471	rBV5	8947	13594	0.21%	0.027%
61	17.768	2496	2498	2502	rVB4	9135	8769	0.14%	0.017%
62	18.074	2546	2550	2551	rVB2	12595	12815	0.20%	0.025%
63	18.109	2551	2556	2557	rBV	10575	12999	0.21%	0.025%
64	18.174	2561	2567	2569	rVV3	10808	14510	0.23%	0.028%
65	18.532	2625	2628	2631	rVB5	10681	11178	0.18%	0.022%
66	19.161	2731	2735	2740	rBV4	46933	74180	1.17%	0.145%
67	19.237	2743	2748	2752	rBV	48216	66523	1.05%	0.130%
68	19.290	2754	2757	2760	rBV5	18998	18118	0.29%	0.035%
69	19.531	2795	2798	2802	rBV5	22568	31167	0.49%	0.061%
70	19.602	2802	2810	2822	rBV	4405093	6335400	100.00%	12.408%
71	19.701	2822	2827	2832	rVV5	71696	109754	1.73%	0.215%
72	19.778	2837	2840	2841	rVB2	10679	9902	0.16%	0.019%
73	19.907	2860	2862	2865	rBV3	11674	15841	0.25%	0.031%
74	20.254	2918	2921	2922	rBV3	12735	12803	0.20%	0.025%
75	20.636	2984	2986	2988	rBV3	16680	14288	0.23%	0.028%
76	21.452	3119	3125	3136	rBV	1624708	2772592	43.76%	5.430%

Data Path : Z:\svoasrv\HPCHEM1\BNA_G\Data\BG121024\
Data File : BG063644.D
Acq On : 10 Dec 2024 22:58
Operator : RC/JU
Sample : P5109-19
Misc :
ALS Vial : 13 Sample Multiplier: 1

Instrument :
BNA_G
ClientSampleId :
BHJA8

Integration Parameters: LSCINT.P
Integrator: RTE
Smoothing : OFF Filtering: 5
Sampling : 1 Min Area: 0.1 % of largest Peak
Start Thrs: 0.2 Max Peaks: 100
Stop Thrs : 0 Peak Location: TOP

If leading or trailing edge < 100 prefer < Baseline drop else tangent >
Peak separation: 5

Method : Z:\svoasrv\HPCHEM1\BNA_G\Methods\SFAM-EPA-BG120624.MA.M
Title : SVOA CALIBRATION

77	24.273	3595	3605	3615	rBV	2252640	5860008	92.50%	11.477%
78	24.472	3631	3639	3656	rVB	1156625	3098960	48.91%	6.069%

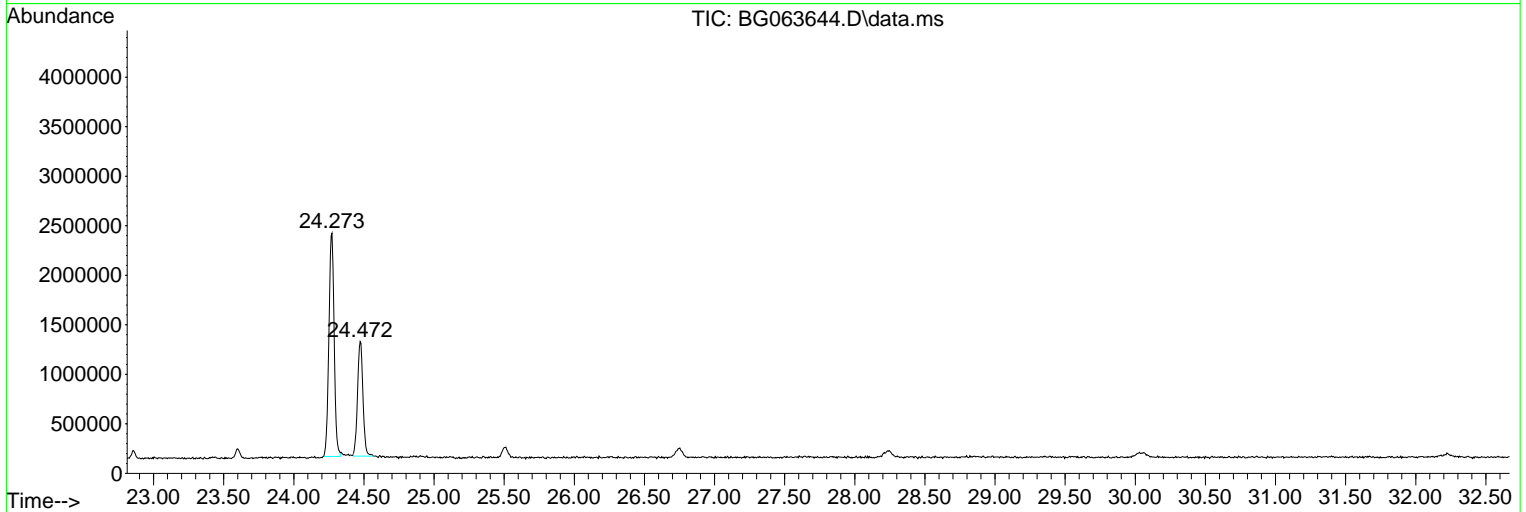
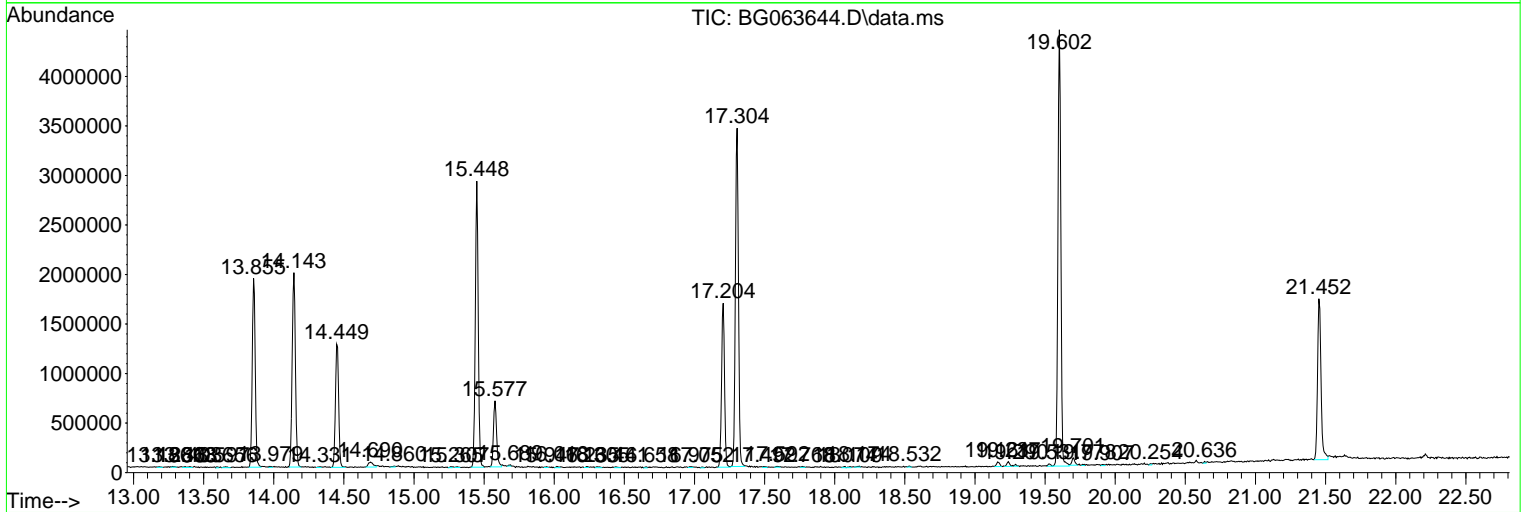
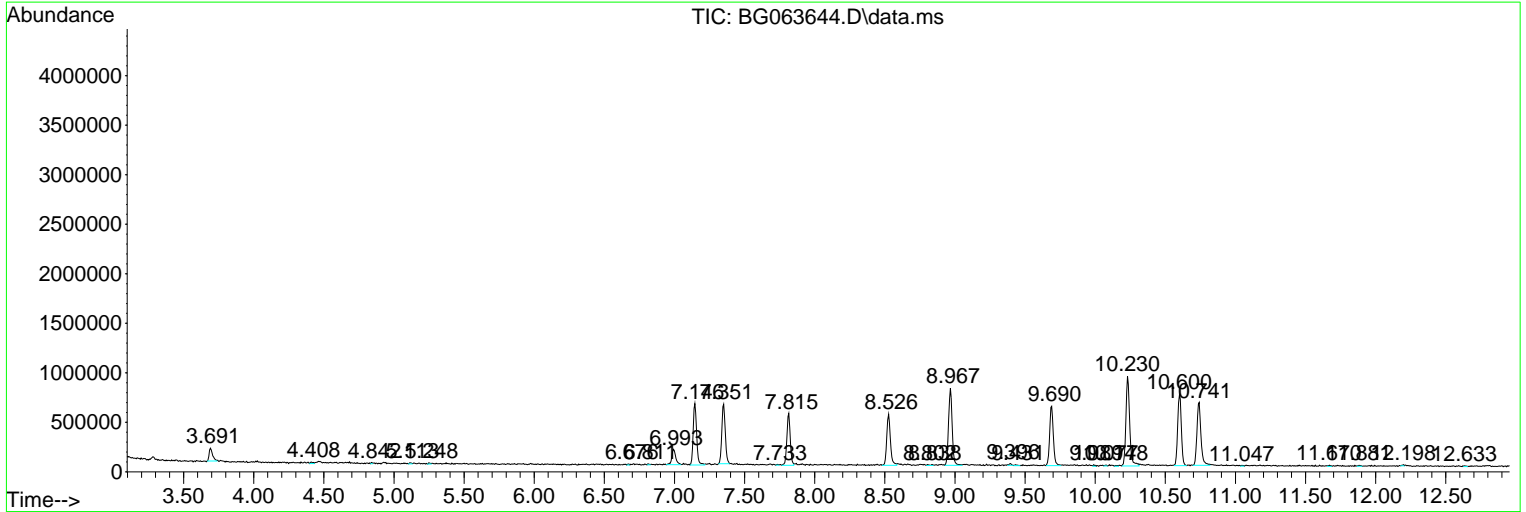
Sum of corrected areas: 51060235

Data Path : Z:\svoasrv\HPCHEM1\BNA_G\Data\BG121024\
 Data File : BG063644.D
 Acq On : 10 Dec 2024 22:58
 Operator : RC/JU
 Sample : P5109-19
 Misc :
 ALS Vial : 13 Sample Multiplier: 1

Instrument :
 BNA_G
ClientSampleId :
 BHJA8

Quant Method : Z:\svoasrv\HPCHEM1\BNA_G\Methods\SFAM-EPA-BG120624.MA.M
 Quant Title : SVOA CALIBRATION

TIC Library : C:\DATABASE\NIST20.L
 TIC Integration Parameters: LSCINT.P



Library Search Compound Report

Data Path : Z:\svoasrv\HPCHEM1\BNA_G\Data\BG121024\
Data File : BG063644.D
Acq On : 10 Dec 2024 22:58
Operator : RC/JU
Sample : P5109-19
Misc :
ALS Vial : 13 Sample Multiplier: 1

Instrument :
BNA_G
ClientSampleId :
BHJA8

Quant Method : Z:\svoasrv\HPCHEM1\BNA_G\Methods\SFAM-EPA-BG120624.MA.M
Quant Title : SVOA CALIBRATION

TIC Library : C:\DATABASE\NIST20.L
TIC Integration Parameters: LSCINT.P

No Library Search Compounds Detected

Data Path : Z:\svoasrv\HPCHEM1\BNA_G\Data\BG121024\
Data File : BG063644.D
Acq On : 10 Dec 2024 22:58
Operator : RC/JU
Sample : P5109-19
Misc :
ALS Vial : 13 Sample Multiplier: 1

Instrument :
BNA_G
ClientSampleId :
BHJA8

Quant Method : Z:\svoasrv\HPCHEM1\BNA_G\Methods\SFAM-EPA-BG120624.MA.M
Quant Title : SVOA CALIBRATION

TIC Library : C:\DATABASE\NIST0.L
TIC Integration Parameters: LSCINT.P

TIC Top Hit name	RT	EstConc	Units	Response	#	RT	Resp	Conc
------------------	----	---------	-------	----------	---	----	------	------
