

Data Path : Z:\HPCHEM1\BNA G\DATA\BG121216\  
 Data File : BG025126.D  
 Acq On : 12 Dec 2016 22:42  
 Operator : UM/SJ  
 Sample : H5990-15  
 Misc :  
 ALS Vial : 10 Sample Multiplier: 1

**Instrument :**  
 BNA\_G  
**ClientSampleId :**  
 P006-SS005-0106-04

**Manual Integrations**  
**APPROVED**  
 sohil  
 12/13/2016 6:07:06 PM

Quant Time: Dec 13 01:29:35 2016  
 Quant Method : Z:\HPCHEM1\BNA G\METHODS\SOM02.2-EPA-BG113016.M  
 Quant Title : SVOA CALIBRATION  
 QLast Update : Tue Dec 13 01:00:05 2016  
 Response via : Initial Calibration

Internal Standards	R.T.	QIon	Response	Conc	Units	Dev(Min)
1) 1,4-Dichlorobenzene-d4	8.24	152	103271	20.00	ng/ul	0.00
18) Naphthalene-d8	11.06	136	486368	20.00	ng/ul	0.00
35) Acenaphthene-d10	14.86	164	376101	20.00	ng/ul	0.00
61) Phenanthrene-d10	17.60	188	803627	20.00	ng/ul	0.00
75) Chrysene-d12	21.89	240	923197	20.00	ng/ul	0.00
83) Perylene-d12	25.32	264	923760	20.00	ng/ul	-0.01

System Monitoring Compounds

3) 1,4-Dioxane-d8	3.59	96	5518	2.76	ng/uL	0.00
5) Phenol-d5	7.38	99	178269	20.01	ng/ul	0.00
7) Bis-(2-Chloroethyl)ether-d	7.56	67	109183	19.81	ng/ul	0.00
9) 2-Chlorophenol-d4	7.77	132	123255	19.78	ng/ul	0.00
13) 4-Methylphenol-d8	8.94	113	157877	21.20	ng/ul	0.00
19) Nitrobenzene-d5	9.42	128	63073	18.31	ng/ul	0.00
22) 2-Nitrophenol-d4	10.14	143	78504	18.28	ng/ul	0.00
26) 2,4-Dichlorophenol-d3	10.68	165	156507	18.95	ng/ul	0.00
29) 4-Chloroaniline-d4	11.20	131	163246	20.12	ng/ul	0.00
43) Dimethylphthalate-d6	14.25	166	505788	19.55	ng/ul	0.00
46) Acenaphthylene-d8	14.56	160	584336	20.62	ng/ul	0.00
51) 4-Nitrophenol-d4	15.06	143	71004	15.97	ng/ul	0.00
57) Fluorene-d10	15.85	176	474260	19.48	ng/ul	0.00
62) 4,6-Dinitro-2-methylphenol	15.96	200	83367	16.78	ng/ul	0.00
70) Anthracene-d10	17.70	188	717583	21.16	ng/ul	0.00
76) Pyrene-d10	19.98	212	824054	21.67	ng/ul	0.00
87) Benzo(a)pyrene-d12	25.08	264	832448	22.24	ng/ul	0.00

Target Compounds

Target Compounds	R.T.	QIon	Response	Conc	Units	Ovalue
6) Phenol	7.41	94	31471	3.44	ng/ul#	94
44) Dimethylphthalate	14.30	163	64826	2.55	ng/ul#	95
69) Phenanthrene	17.64	178	52476	1.37	ng/ul	96
74) Fluoranthene	19.64	202	166203	3.65	ng/ul#	95
77) Pyrene	20.00	202	139916	3.15	ng/ul	98
80) Benzo(a)anthracene	21.87	228	80651	1.68	ng/ul	96
82) Chrysene	21.95	228	97301	2.17	ng/ul	95
85) Benzo(b)fluoranthene	24.22	252	128052	2.80	ng/ul#	99
88) Benzo(a)pyrene	25.15	252	78542	1.78	ng/ul#	91
89) Indeno(1,2,3-cd)pyrene	29.24	276	74156m	1.35	ng/ul	
91) Benzo(g,h,i)perylene	30.48	276	67952m	1.49	ng/ul	

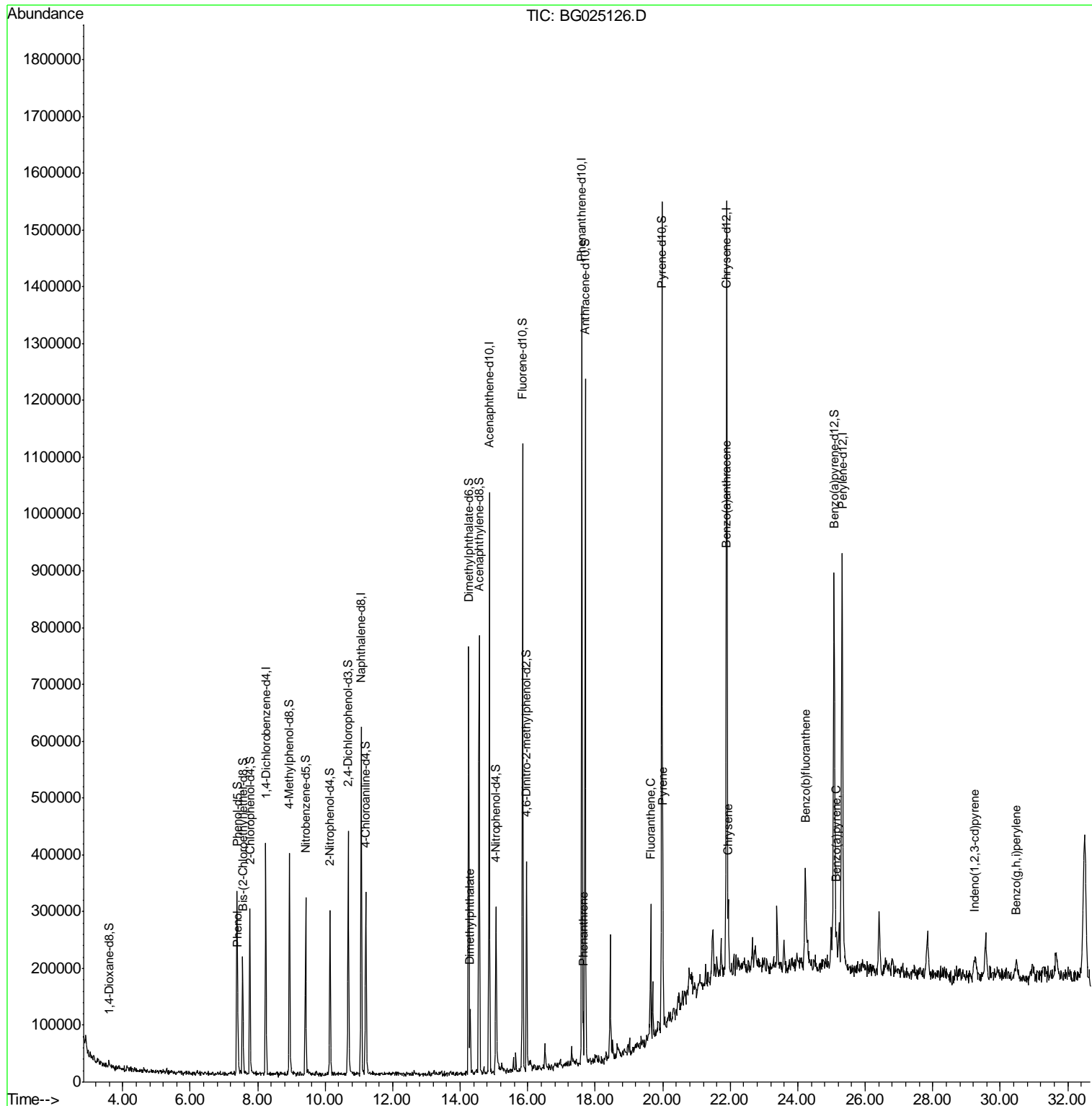
(#) = qualifier out of range (m) = manual integration (+) = signals summed

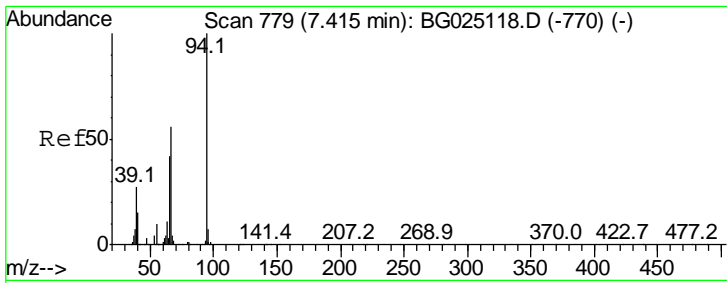
Data Path : Z:\HPCHEM1\BNA G\DATA\BG121216\  
 Data File : BG025126.D  
 Acq On : 12 Dec 2016 22:42  
 Operator : UM/SJ  
 Sample : H5990-15  
 Misc :  
 ALS Vial : 10 Sample Multiplier: 1

Instrument :  
 BNA\_G  
 Client Sampled :  
 P006-SS005-0106-04

Manual Integrations  
 APPROVED  
 sohil  
 12/13/2016 6:07:06 PM

Quant Time: Dec 13 01:29:35 2016  
 Quant Method : Z:\HPCHEM1\BNA G\METHODS\SOM02.2-EPA-BG113016.M  
 Quant Title : SVOA CALIBRATION  
 QLast Update : Tue Dec 13 01:00:05 2016  
 Response via : Initial Calibration





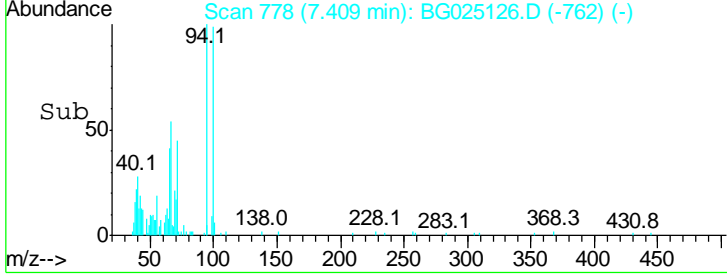
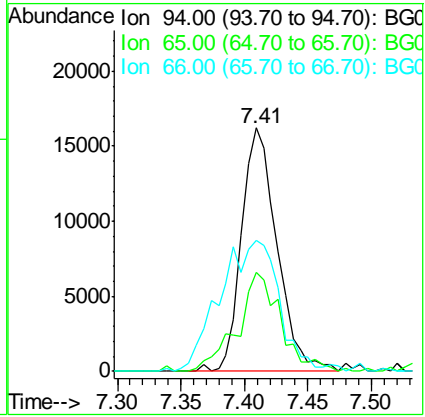
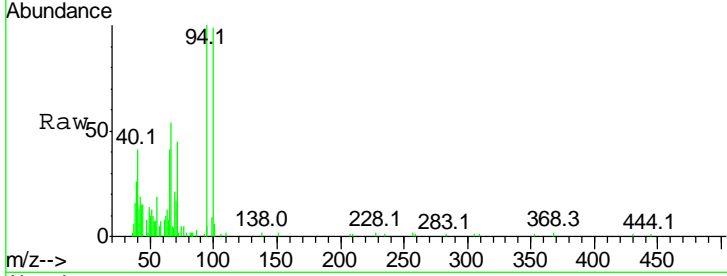
#6  
 Phenol  
 Concen: 3.44 ng/ul  
 RT: 7.41 min Scan# 778  
 Delta R.T. -0.01 min  
 Lab File: BG025126.D  
 Acq: 12 Dec 2016 22:42

**Instrument :**  
 BNA\_G  
**ClientSampled :**  
 P006-SS005-0106-04

Tgt Ion	Ratio	Lower	Upper
94	100		
65	40.6	26.8	40.2#
66	53.6	44.4	66.6

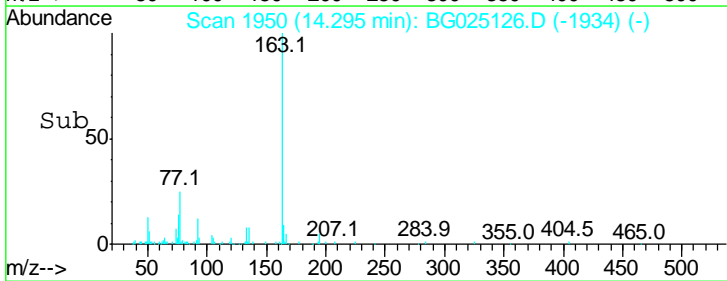
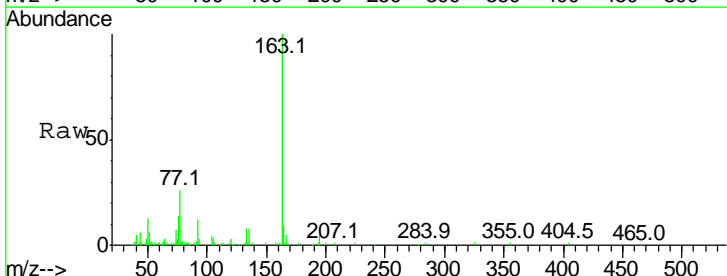
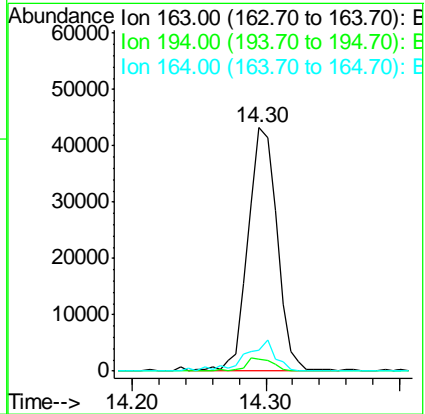
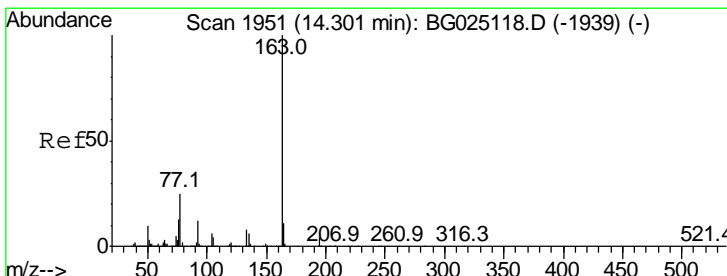
**Manual Integrations**  
**APPROVED**

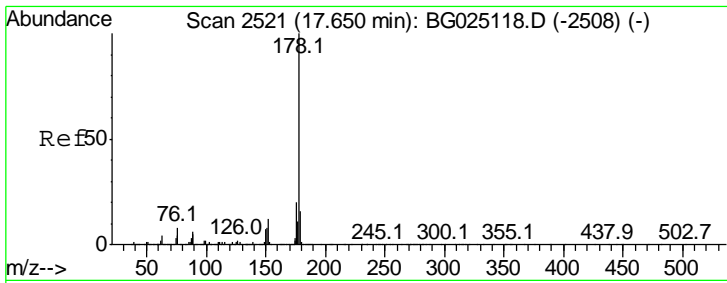
sohil  
 12/13/2016 6:07:06 PM



#44  
 Dimethylphthalate  
 Concen: 2.55 ng/ul  
 RT: 14.30 min Scan# 1950  
 Delta R.T. -0.01 min  
 Lab File: BG025126.D  
 Acq: 12 Dec 2016 22:42

Tgt Ion	Ratio	Lower	Upper
163	100		
194	4.8	3.4	5.0
164	8.8	9.0	13.4#





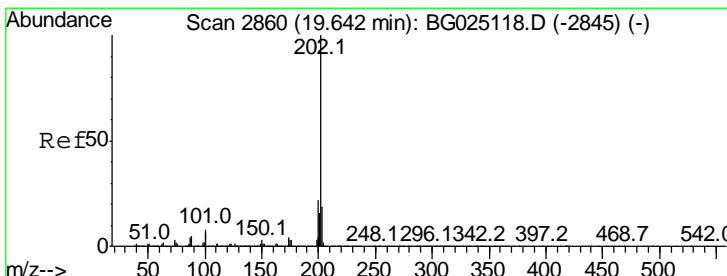
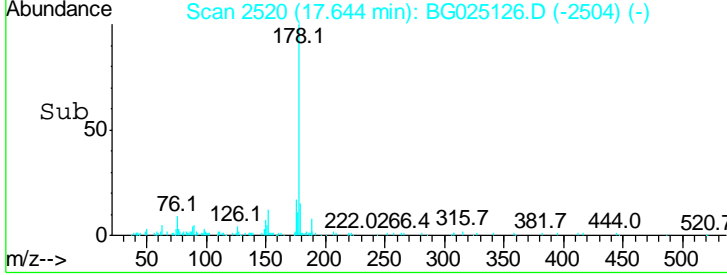
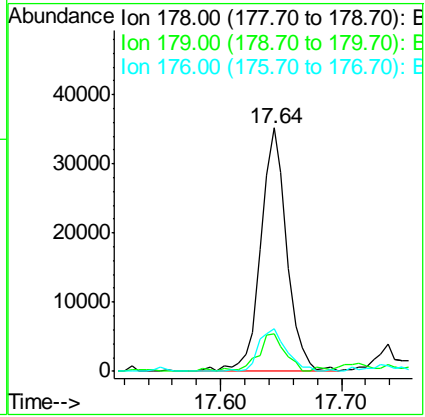
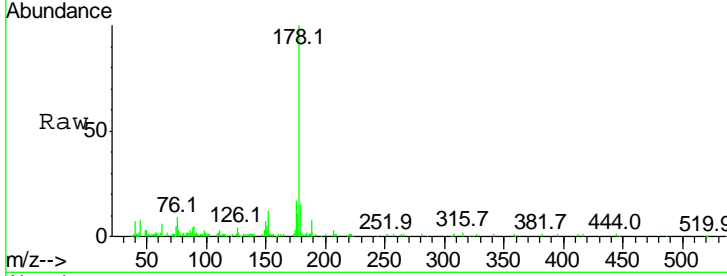
#69  
 Phenanthrene  
 Concen: 1.37 ng/ul  
 RT: 17.64 min Scan# 2520  
 Delta R.T. -0.01 min  
 Lab File: BG025126.D  
 Acq: 12 Dec 2016 22:42

Instrument :  
 BNA\_G  
 ClientSampled :  
 P006-SS005-0106-04

Tgt Ion	Resp	Lower	Upper
178	100		
179	15.5	12.4	18.6
176	17.4	16.5	24.7

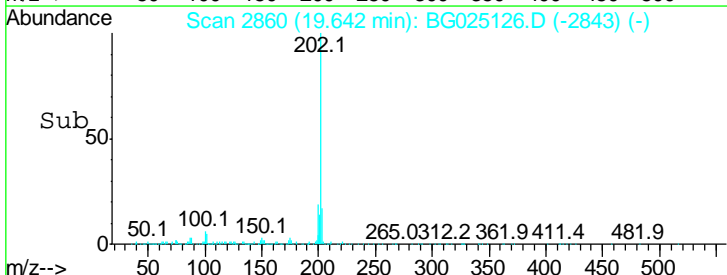
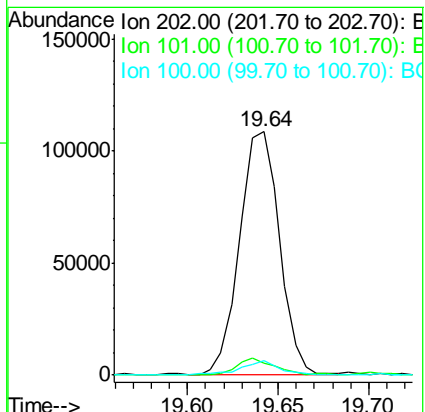
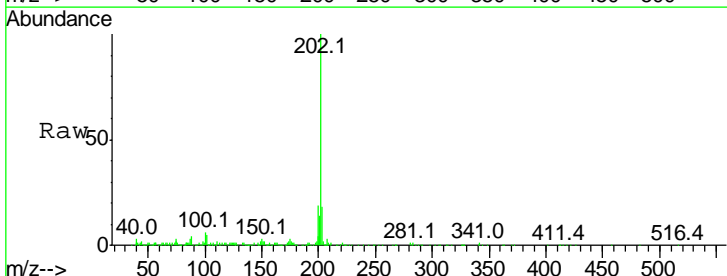
Manual Integrations  
 APPROVED

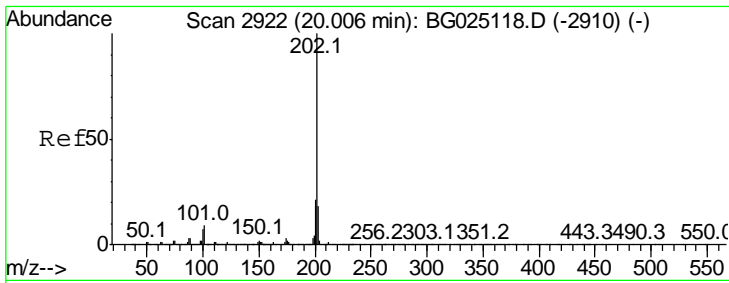
sohil  
 12/13/2016 6:07:06 PM



#74  
 Fluoranthene  
 Concen: 3.65 ng/ul  
 RT: 19.64 min Scan# 2860  
 Delta R.T. -0.00 min  
 Lab File: BG025126.D  
 Acq: 12 Dec 2016 22:42

Tgt Ion	Resp	Lower	Upper
202	100		
101	5.1	6.2	9.2#
100	5.8	5.2	7.8





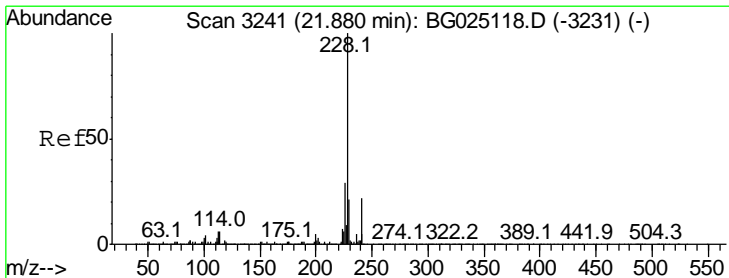
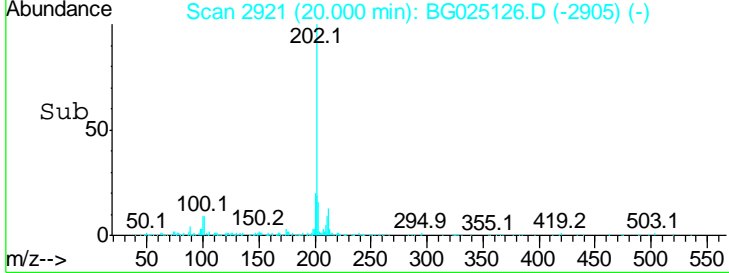
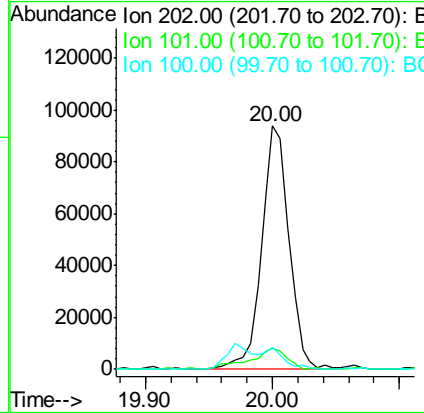
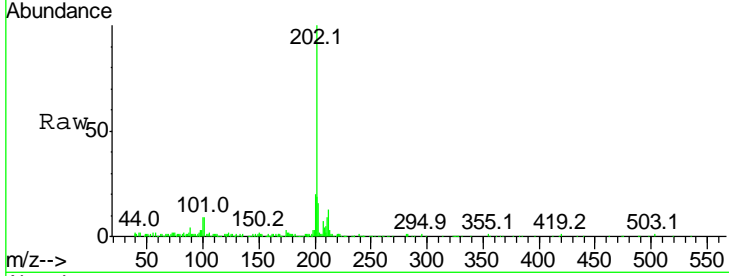
#77  
 Pyrene  
 Concen: 3.15 ng/ul  
 RT: 20.00 min Scan# 2921  
 Delta R.T. -0.01 min  
 Lab File: BG025126.D  
 Acq: 12 Dec 2016 22:42

Instrument :  
 BNA\_G  
 ClientSampled :  
 P006-SS005-0106-04

Tgt Ion	Ratio	Lower	Upper
202	100		
101	8.7	6.9	10.3
100	9.4	6.6	10.0

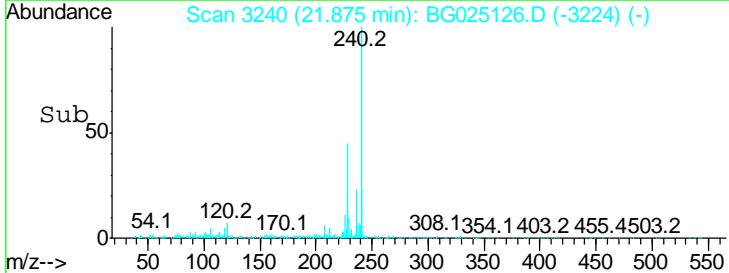
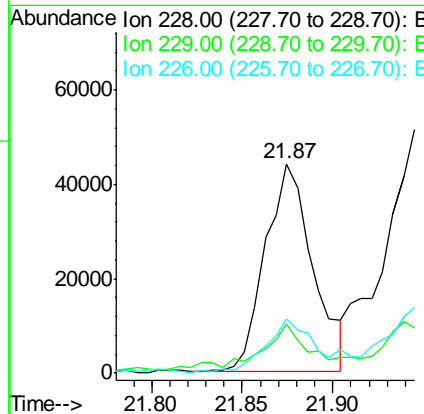
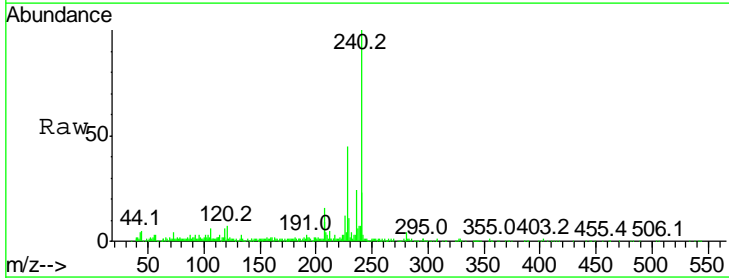
Manual Integrations  
 APPROVED

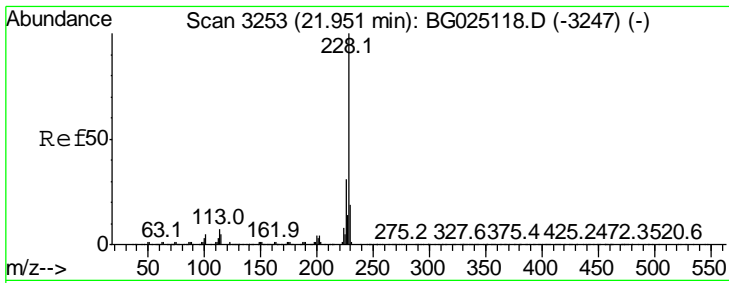
sohil  
 12/13/2016 6:07:06 PM



#80  
 Benzo(a)anthracene  
 Concen: 1.68 ng/ul  
 RT: 21.87 min Scan# 3240  
 Delta R.T. -0.01 min  
 Lab File: BG025126.D  
 Acq: 12 Dec 2016 22:42

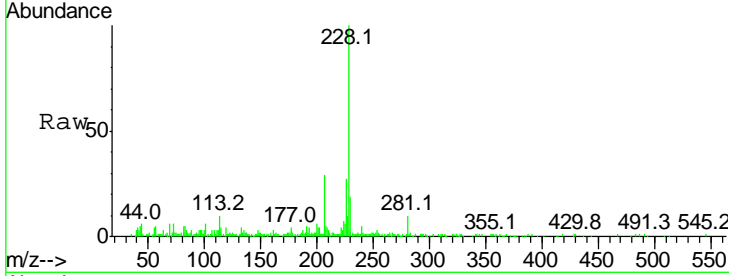
Tgt Ion	Ratio	Lower	Upper
228	100		
229	23.5	16.3	24.5
226	25.9	21.9	32.9





#82  
 Chrysene  
 Concen: 2.17 ng/ul  
 RT: 21.95 min Scan# 3252  
 Delta R.T. -0.01 min  
 Lab File: BG025126.D  
 Acq: 12 Dec 2016 22:42

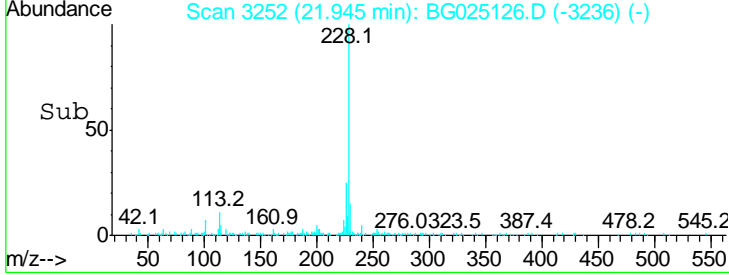
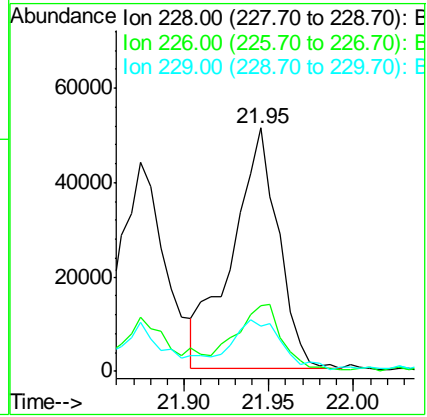
Instrument : BNA\_G  
 Client Sampled : P006-SS005-0106-04



Tgt Ion: 228 Resp: 97301

Ion	Ratio	Lower	Upper
228	100		
226	27.1	24.0	36.0
229	18.5	16.9	25.3

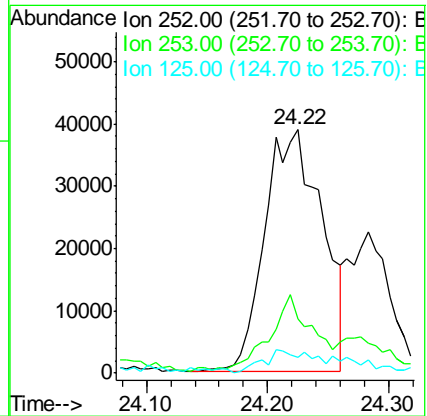
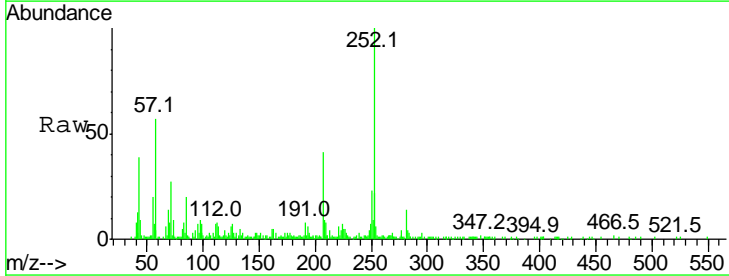
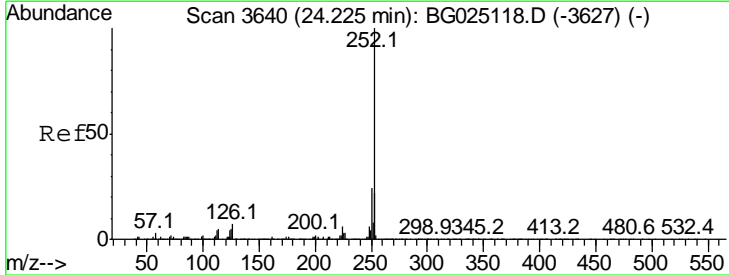
Manual Integrations APPROVED  
 sohil  
 12/13/2016 6:07:06 PM

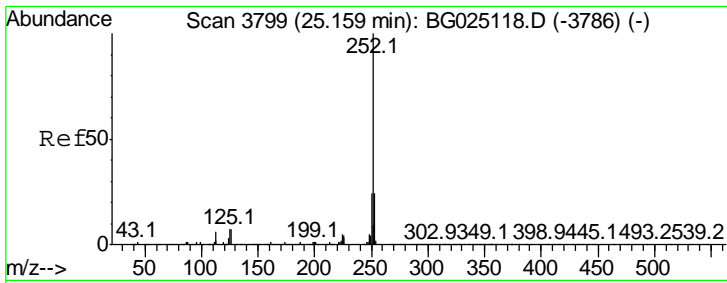


#85  
 Benzo(b)fluoranthene  
 Concen: 2.80 ng/ul  
 RT: 24.22 min Scan# 3640  
 Delta R.T. -0.00 min  
 Lab File: BG025126.D  
 Acq: 12 Dec 2016 22:42

Tgt Ion: 252 Resp: 128052

Ion	Ratio	Lower	Upper
252	100		
253	22.4	17.7	26.5
125	6.2	4.0	6.0#





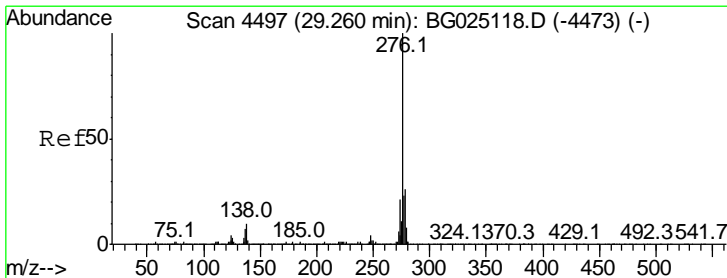
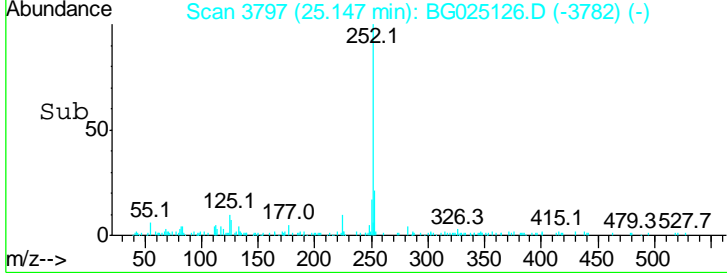
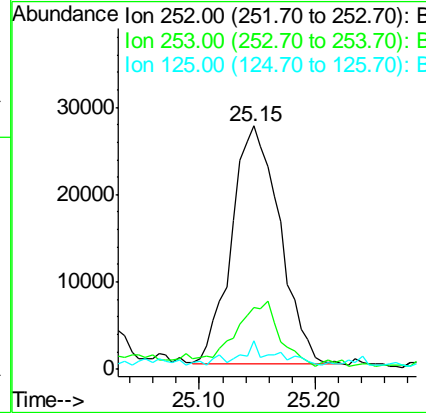
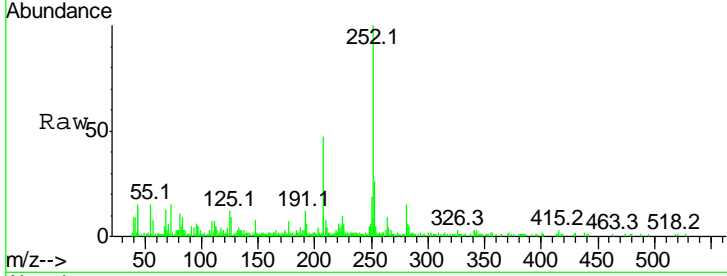
#88  
 Benzo(a)pyrene  
 Concen: 1.78 ng/ul  
 RT: 25.15 min Scan# 3797  
 Delta R.T. -0.01 min  
 Lab File: BG025126.D  
 Acq: 12 Dec 2016 22:42

Instrument :  
 BNA\_G  
 Client Sampled :  
 P006-SS005-0106-04

Tgt Ion	Ratio	Lower	Upper
252	100		
253	25.6	17.8	26.6
125	11.7	5.4	8.0

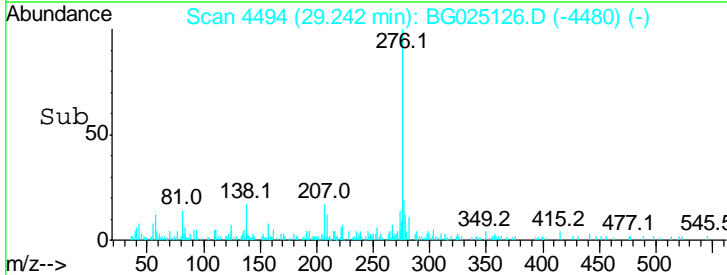
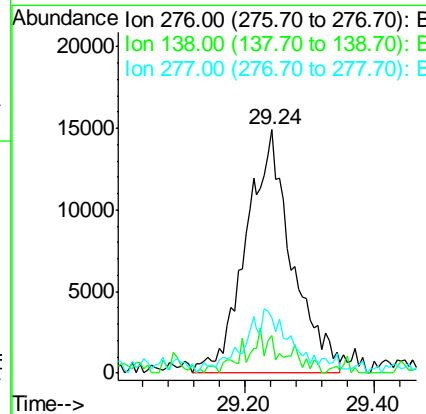
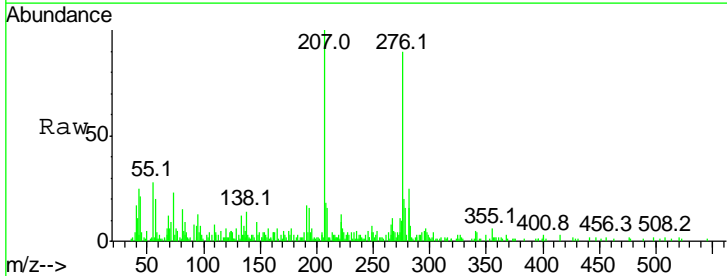
Manual Integrations  
 APPROVED

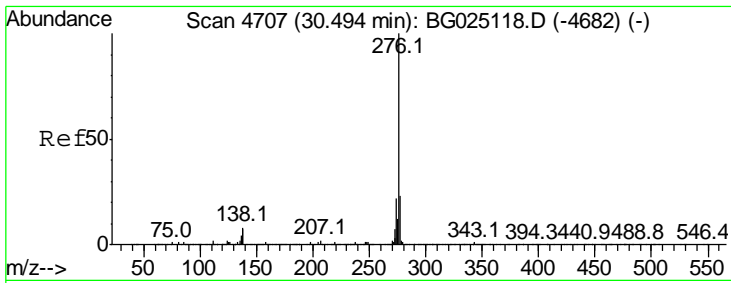
sohil  
 12/13/2016 6:07:06 PM



#89  
 Indeno(1,2,3-cd)pyrene  
 Concen: 1.35 ng/ul m  
 RT: 29.24 min Scan# 4494  
 Delta R.T. -0.02 min  
 Lab File: BG025126.D  
 Acq: 12 Dec 2016 22:42

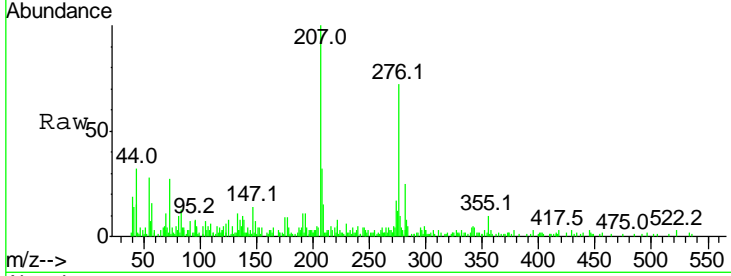
Tgt Ion	Ratio	Lower	Upper
276	100		
138	15.4	8.2	12.4
277	22.6	18.6	28.0





#91  
 Benzo(a,h,i)perylene  
 Concen: 1.49 ng/ul m  
 RT: 30.48 min Scan# 4705  
 Delta R.T. -0.01 min  
 Lab File: BG025126.D  
 Acq: 12 Dec 2016 22:42

**Instrument :**  
 BNA\_G  
**ClientSampled :**  
 P006-SS005-0106-04



Tot Ion: 276 Resp: 67952

Ion	Ratio	Lower	Upper
276	100		
138	10.5	8.6	12.8
277	13.4	17.6	26.4

**Manual Integrations**  
**APPROVED**  
 sohil  
 12/13/2016 6:07:06 PM

