

Data Path : \\74.0.250.170\SVOASRV\HPCHEM1\BNA G\DATA\BG121317\
 Data File : BG031534.D
 Acq On : 13 Dec 2017 19:07
 Operator : SJ/JU
 Sample : I6786-01DL 5X
 Misc :
 ALS Vial : 14 Sample Multiplier: 1

Instrument :
 BNA_G
 ClientSampleId :

Quant Time: Dec 13 19:39:55 2017
 Quant Method : Z:\HPCHEM1\BNA G\METHODS\8270-BG121117.M
 Quant Title : ASP BNA STANDARDS FOR 5 POINT CALIBRATION
 QLast Update : Mon Dec 11 17:25:55 2017
 Response via : Initial Calibration

Internal Standards	R.T.	QIon	Response	Conc	Units	Dev(Min)
1) 1,4-Dichlorobenzene-d4	8.11	152	42008	20.00	ng	0.00
21) Naphthalene-d8	10.92	136	205452	20.00	ng	0.00
38) Acenaphthene-d10	14.73	164	155173	20.00	ng	0.00
63) Phenanthrene-d10	17.47	188	412824	20.00	ng	0.00
75) Chrysene-d12	21.74	240	477112	20.00	ng	0.00
86) Perylene-d12	25.03	264	468325	20.00	ng	0.00

System Monitoring Compounds

5) 2-Fluorophenol	5.68	112	20264	8.55	ng	0.01
7) Phenol-d6	7.29	99	18730	5.69	ng	0.02
23) Nitrobenzene-d5	9.28	82	46102	13.83	ng	0.00
41) 2,4,6-Tribromophenol	16.22	330	29307	16.12	ng	0.00
44) 2-Fluorobiphenyl	13.35	172	163134	15.43	ng	0.00
78) Terphenyl-d14	20.06	244	334444	15.95	ng	0.00

Target Compounds

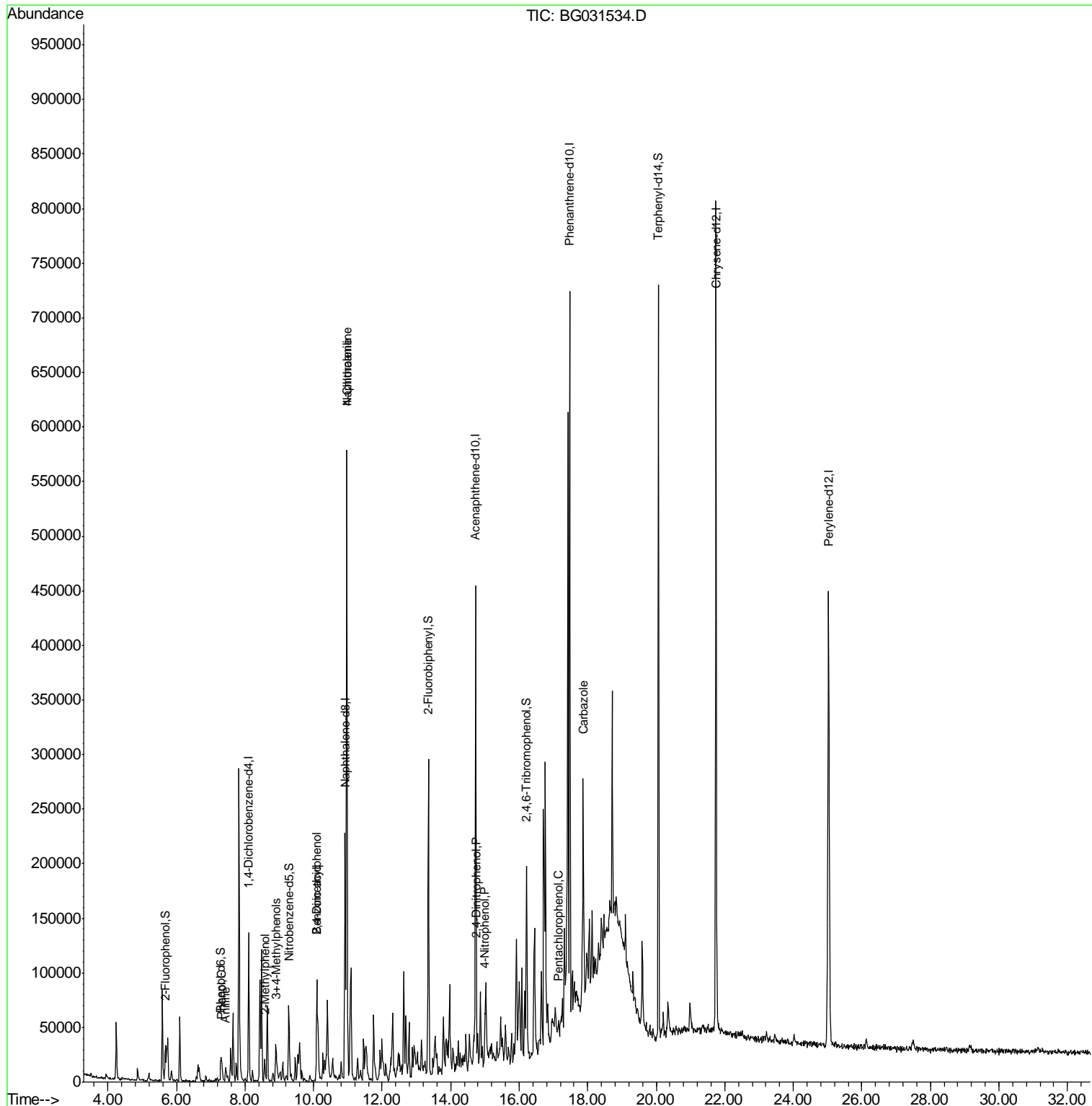
						Qvalue
6) Aniline	7.44	93	9501	2.193	ng	94
10) Phenol	7.34	94	7649	2.263	ng	81
17) 2-Methylphenol	8.58	107	8772	3.807	ng	# 91
20) 3+4-Methylphenols	8.90	107	21449	6.250	ng	96
27) 2,4-Dimethylphenol	10.10	122	35410	13.801	ng	89
31) Naphthalene	10.97	128	509732	50.502	ng	99
32) Benzoic acid	10.10	122	35410	29.478	ng	# 6
33) 4-Chloroaniline	10.97	127	69335	15.821	ng	# 34
53) 2,4-Dinitrophenol	14.76	184	70	9.105	ng	# 1
55) 4-Nitrophenol	15.00	139	2048	4.577	ng	# 36
69) Pentachlorophenol	17.16	266	60	5.685	ng	# 19
72) Carbazole	17.88	167	97603	5.058	ng	98

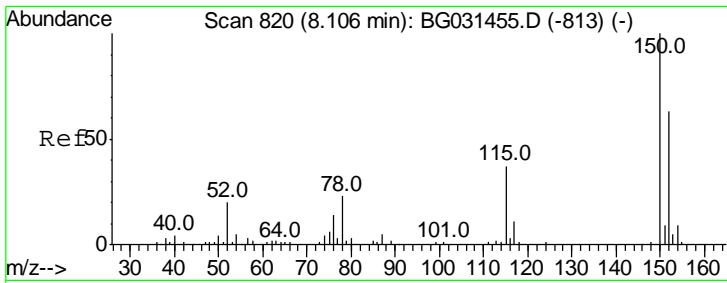
(#) = qualifier out of range (m) = manual integration (+) = signals summed

Data Path : \\74.0.250.170\SVOASRV\HPCHEM1\BNA G\DATA\BG121317\
 Data File : BG031534.D
 Acq On : 13 Dec 2017 19:07
 Operator : SJ/JU
 Sample : I6786-01DL 5X
 Misc :
 ALS Vial : 14 Sample Multiplier: 1

Instrument :
 BNA_G
 ClientSampled :

Quant Time: Dec 13 19:39:55 2017
 Quant Method : Z:\HPCHEM1\BNA G\METHODS\8270-BG121117.M
 Quant Title : ASP BNA STANDARDS FOR 5 POINT CALIBRATION
 QLast Update : Mon Dec 11 17:25:55 2017
 Response via : Initial Calibration



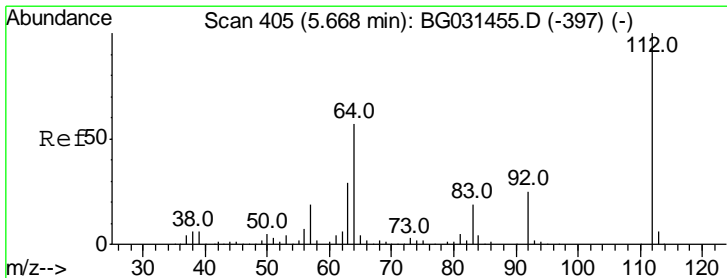
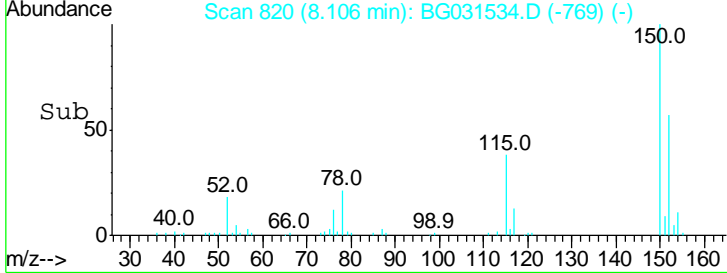
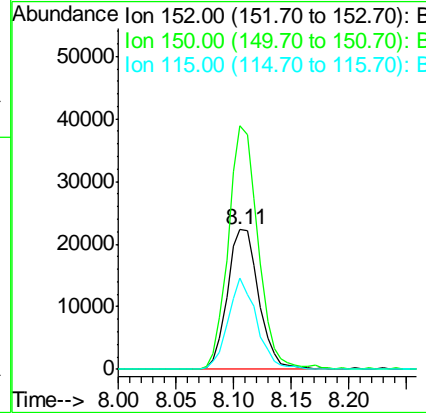
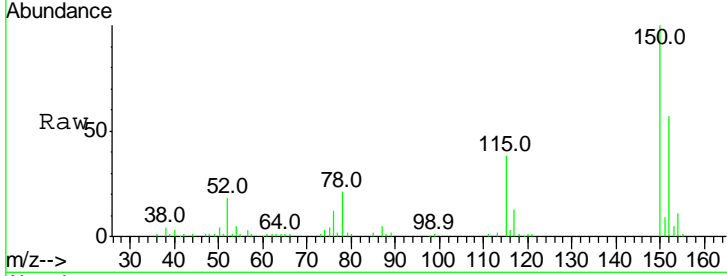


#1
 1,4-Dichlorobenzene-d4
 Concen: 20.000 ng
 RT: 8.11 min Scan# 820
 Delta R.T. -0.00 min
 Lab File: BG031534.D
 Acq: 13 Dec 2017 19:07

Instrument :
 BNA_G
 ClientSampled :

Tot Ion:152 Resp: 42008

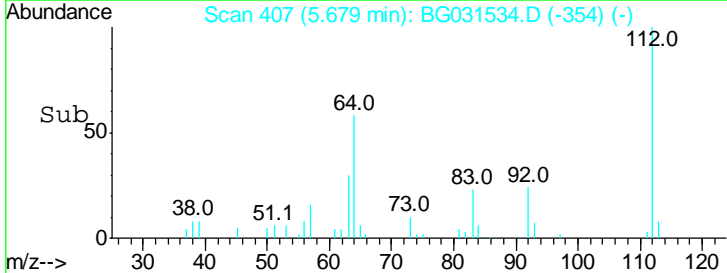
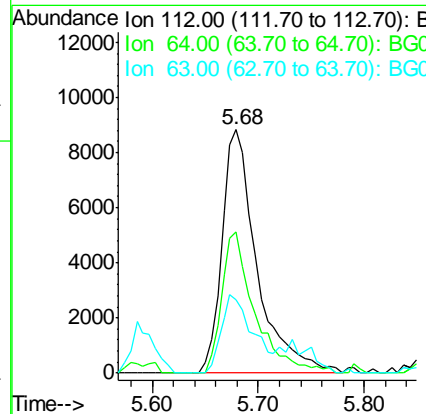
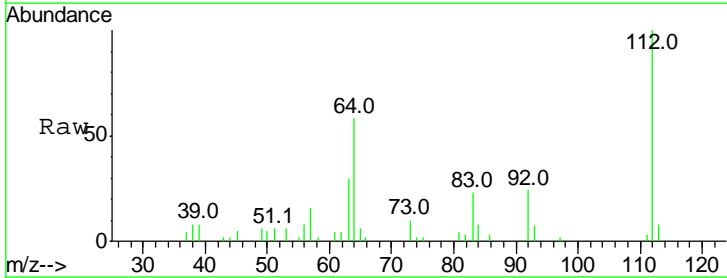
Ion	Ratio	Lower	Upper
152	100		
150	174.8	126.6	189.8
115	65.9	53.0	79.4

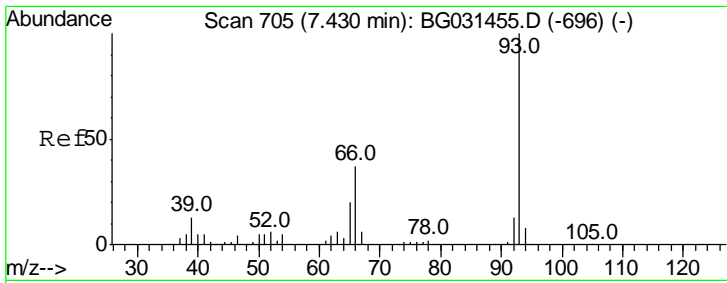


#5
 2-Fluorophenol
 Concen: 8.550 ng
 RT: 5.68 min Scan# 407
 Delta R.T. 0.01 min
 Lab File: BG031534.D
 Acq: 13 Dec 2017 19:07

Tgt Ion:112 Resp: 20264

Ion	Ratio	Lower	Upper
112	100		
64	57.8	56.3	84.5
63	30.1	30.1	45.1

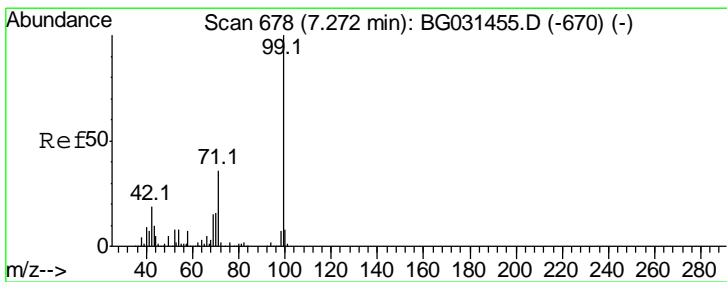
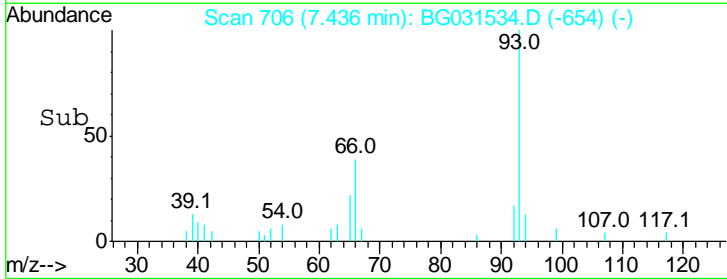
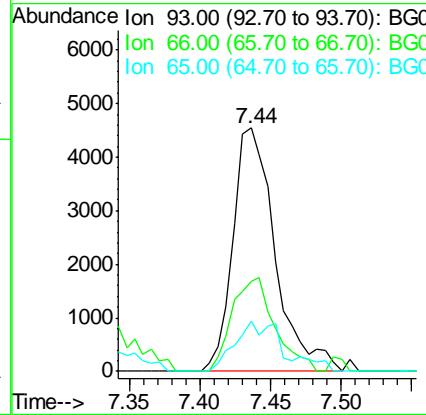
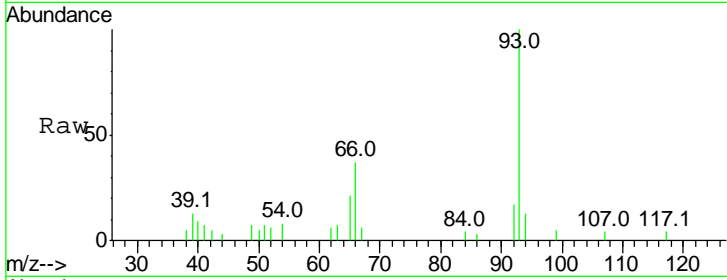




#6
 Aniline
 Concen: 2.193 ng
 RT: 7.44 min Scan# 706
 Delta R.T. 0.01 min
 Lab File: BG031534.D
 Acq: 13 Dec 2017 19:07

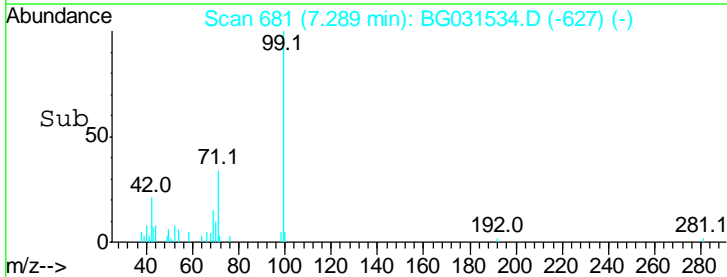
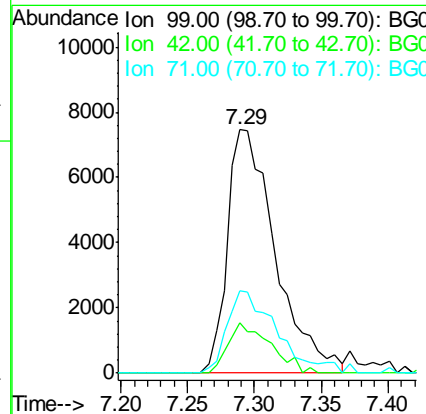
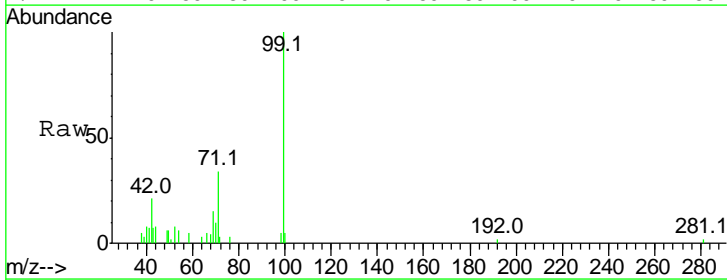
Instrument :
 BNA_G
 ClientSampled :

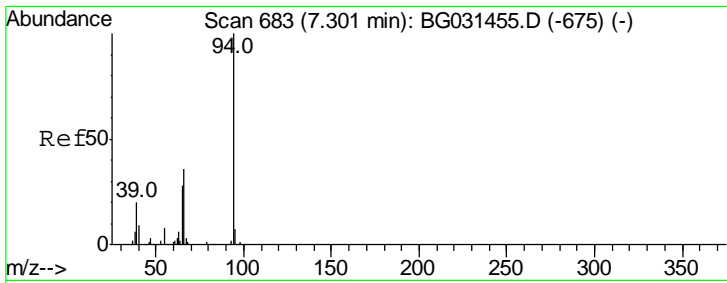
Tgt Ion	Resp	Lower	Upper
93	100		
66	36.9	33.7	50.5
65	20.7	16.1	24.1



#7
 Phenol-d6
 Concen: 5.693 ng
 RT: 7.29 min Scan# 681
 Delta R.T. 0.02 min
 Lab File: BG031534.D
 Acq: 13 Dec 2017 19:07

Tgt Ion	Resp	Lower	Upper
99	100		
42	20.5	14.1	21.1
71	33.9	26.1	39.1

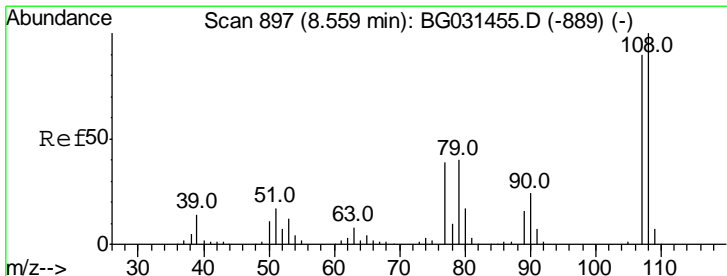
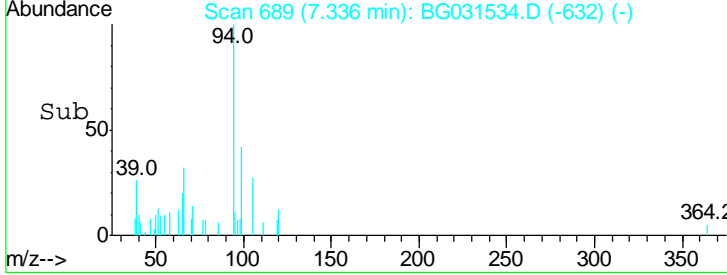
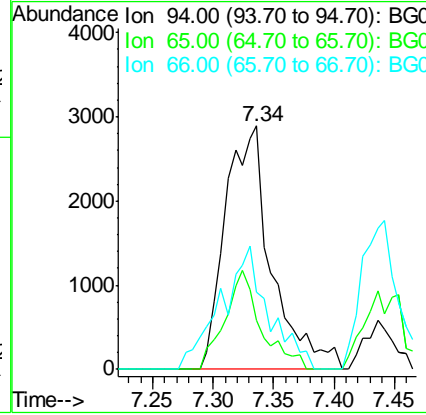
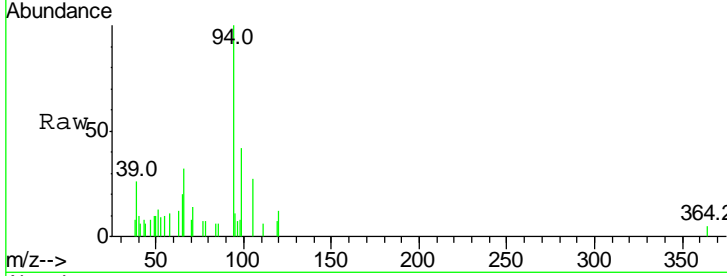




#10
 Phenol
 Concen: 2.263 ng
 RT: 7.34 min Scan# 689
 Delta R.T. 0.03 min
 Lab File: BG031534.D
 Acq: 13 Dec 2017 19:07

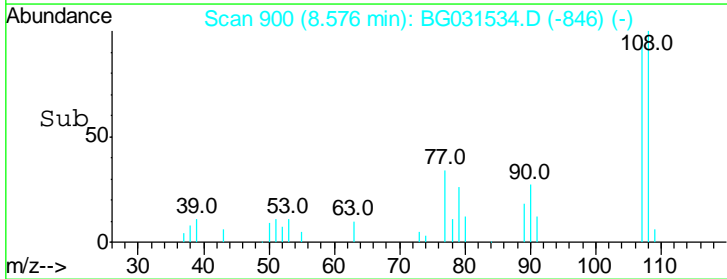
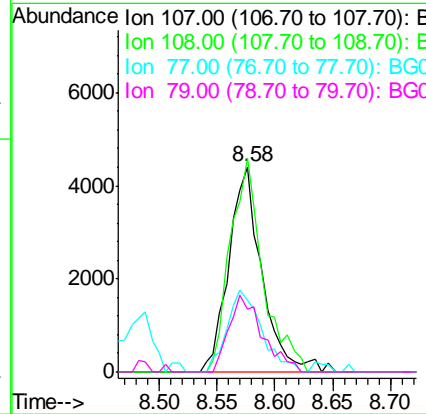
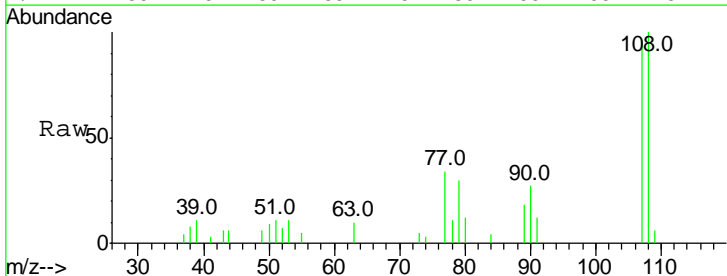
Instrument :
 BNA_G
 ClientSampled :

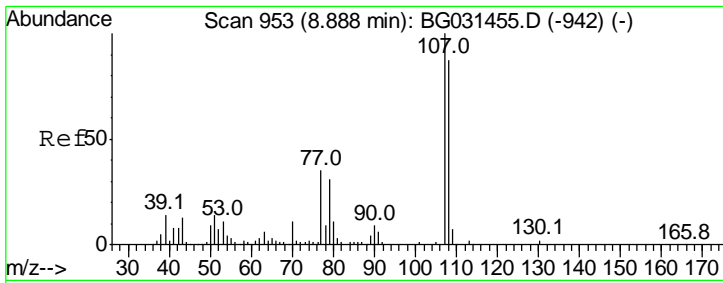
Tgt Ion	Resp	Lower	Upper
94	100		
65	19.9	11.9	51.9
66	31.5	22.2	62.2



#17
 2-Methylphenol
 Concen: 3.807 ng
 RT: 8.58 min Scan# 900
 Delta R.T. 0.02 min
 Lab File: BG031534.D
 Acq: 13 Dec 2017 19:07

Tgt Ion	Resp	Lower	Upper
107	100		
108	104.2	83.9	125.9
77	35.2	37.2	55.8#
79	30.8	36.2	54.2#

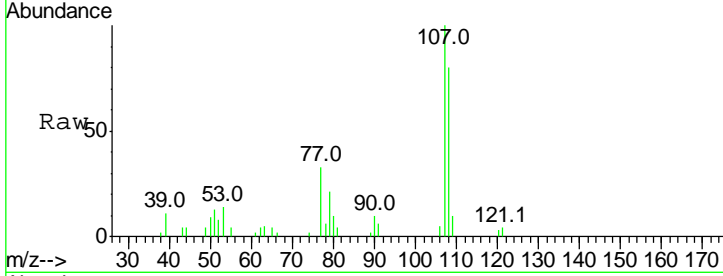




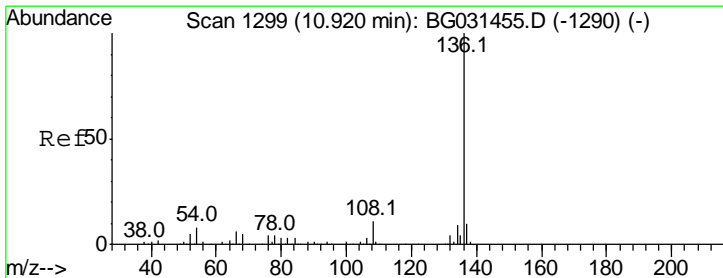
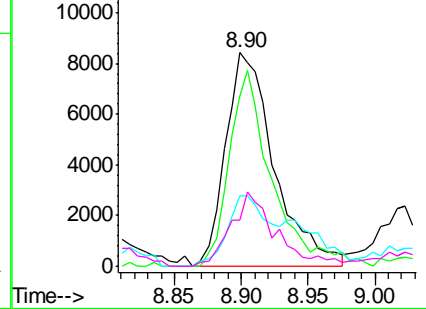
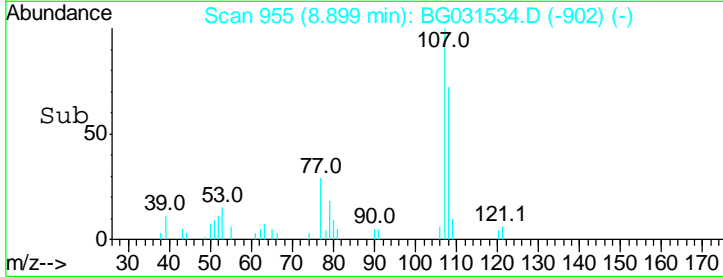
#20
 3+4-Methylphenols
 Concen: 6.250 ng
 RT: 8.90 min Scan# 955
 Delta R.T. 0.01 min
 Lab File: BG031534.D
 Acq: 13 Dec 2017 19:07

Instrument :
 BNA_G
 ClientSampled :

Tgt Ion	Resp	Lower	Upper
107	100		
108	79.8	61.6	101.6
77	32.9	13.9	53.9
79	21.3	8.8	48.8

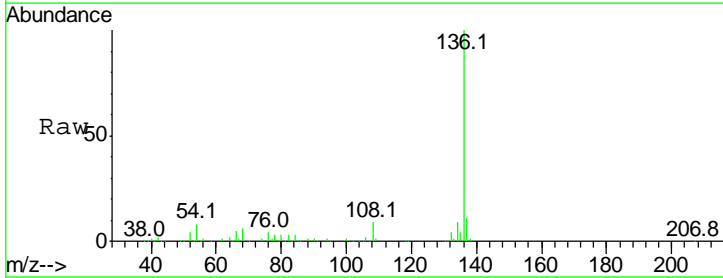


Abundance Ion 107.00 (106.70 to 107.70): E
 Ion 108.00 (107.70 to 108.70): E
 Ion 77.00 (76.70 to 77.70): BGC
 Ion 79.00 (78.70 to 79.70): BGC

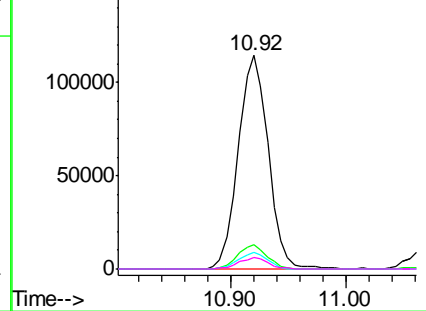
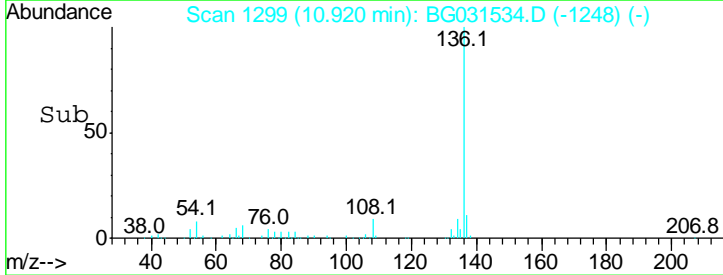


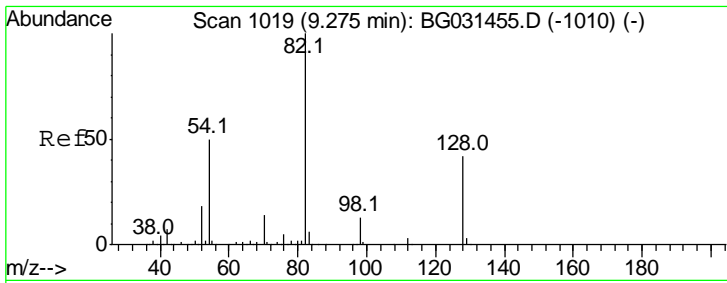
#21
 Naphthalene-d8
 Concen: 20.000 ng
 RT: 10.92 min Scan# 1299
 Delta R.T. -0.00 min
 Lab File: BG031534.D
 Acq: 13 Dec 2017 19:07

Tgt Ion	Resp	Lower	Upper
136	100		
137	11.1	9.2	13.8
54	7.8	10.3	15.5#
68	5.5	4.5	6.7



Abundance Ion 136.00 (135.70 to 136.70): E
 Ion 137.00 (136.70 to 137.70): E
 Ion 54.00 (53.70 to 54.70): BGC
 Ion 68.00 (67.70 to 68.70): BGC

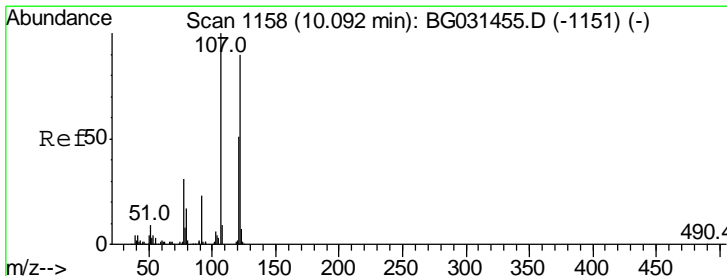
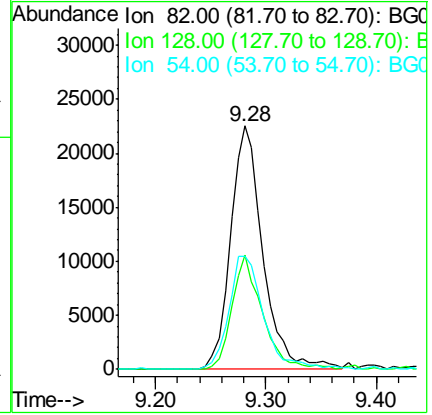
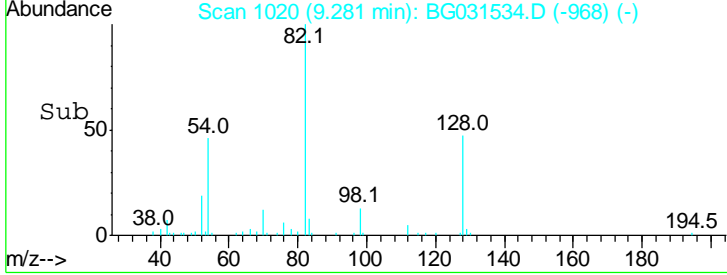
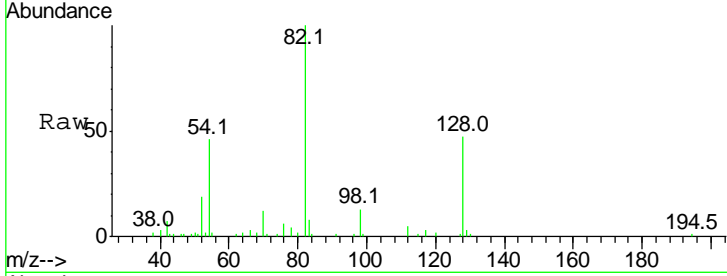




#23
 Nitrobenzene-d5
 Concen: 13.831 ng
 RT: 9.28 min Scan# 1020
 Delta R.T. 0.01 min
 Lab File: BG031534.D
 Acq: 13 Dec 2017 19:07

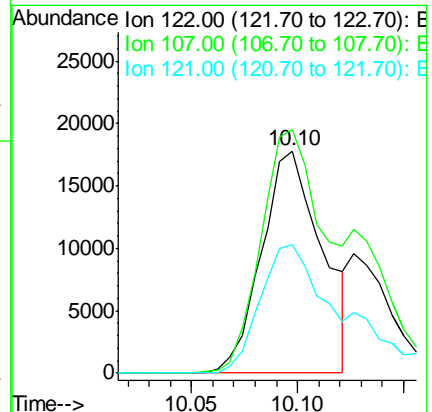
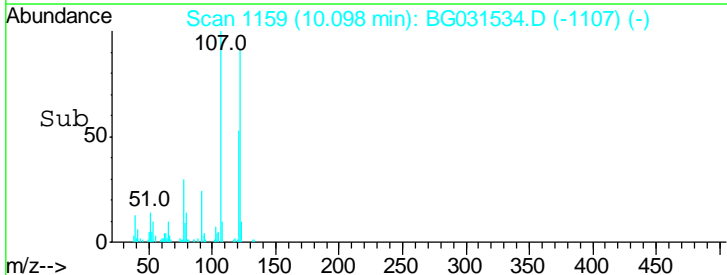
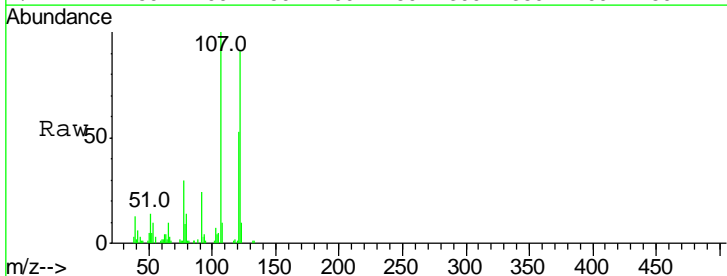
Instrument :
 BNA_G
 ClientSampled :

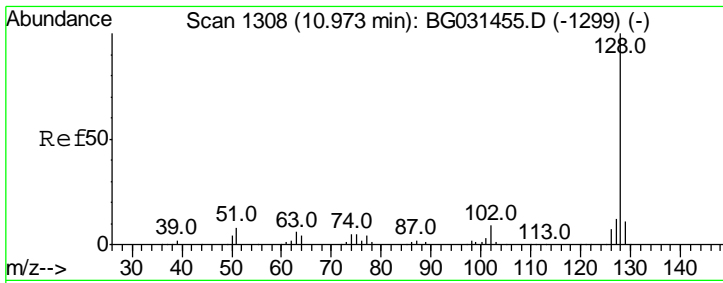
Tgt Ion	Resp	Lower	Upper
82	46102		
82	100		
128	47.2	29.7	44.5#
54	46.4	43.1	64.7



#27
 2,4-Dimethylphenol
 Concen: 13.801 ng
 RT: 10.10 min Scan# 1159
 Delta R.T. 0.01 min
 Lab File: BG031534.D
 Acq: 13 Dec 2017 19:07

Tgt Ion	Resp	Lower	Upper
122	35410		
122	100		
107	109.8	100.2	150.2
121	58.1	44.4	66.6

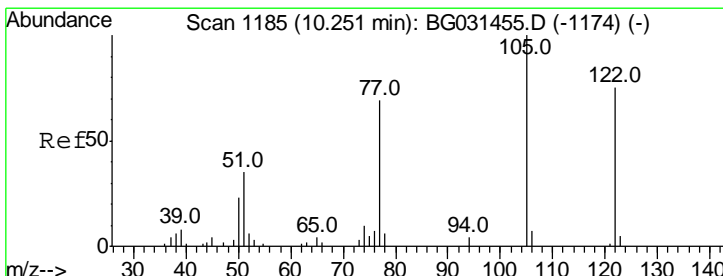
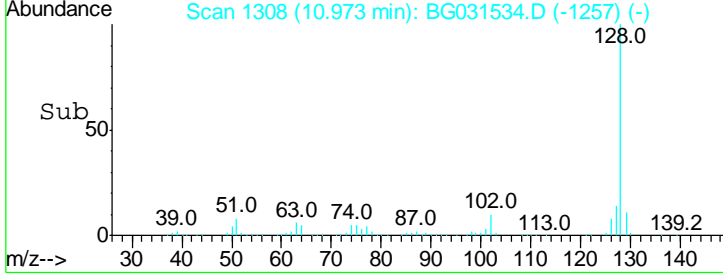
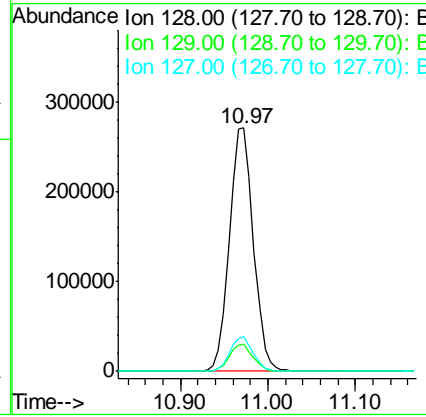
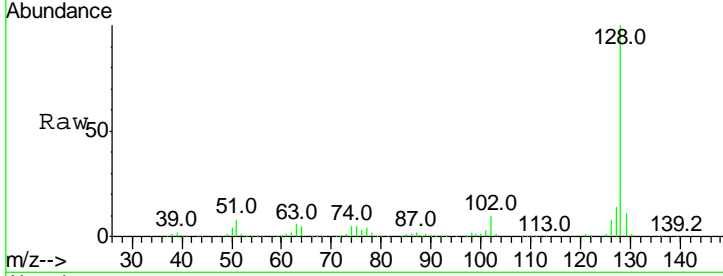




#31
 Naphthalene
 Concen: 50.502 ng
 RT: 10.97 min Scan# 1308
 Delta R.T. -0.00 min
 Lab File: BG031534.D
 Acq: 13 Dec 2017 19:07

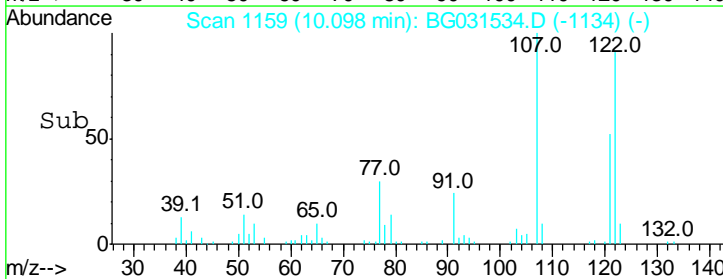
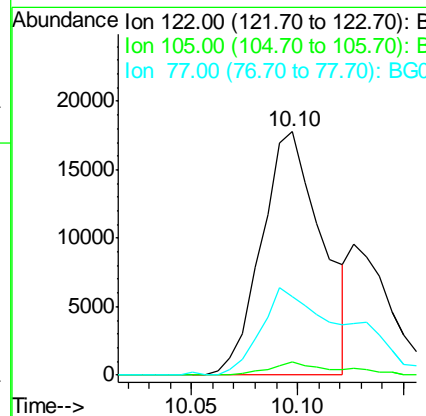
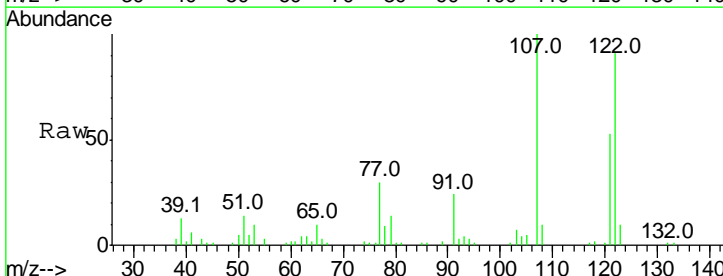
Instrument :
 BNA_G
 ClientSampled :

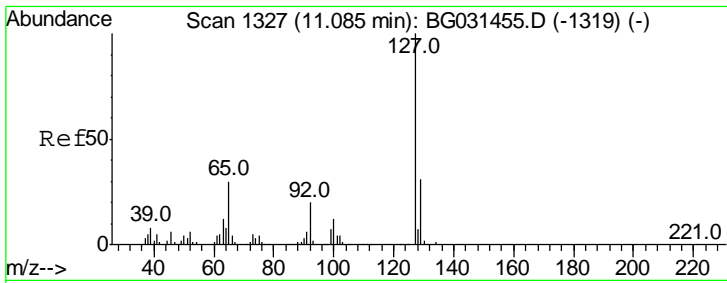
Tgt Ion	Resp	Lower	Upper
128	100		
129	11.2	8.6	12.8
127	14.3	11.6	17.4



#32
 Benzoic acid
 Concen: 29.478 ng
 RT: 10.10 min Scan# 1159
 Delta R.T. -0.15 min
 Lab File: BG031534.D
 Acq: 13 Dec 2017 19:07

Tgt Ion	Resp	Lower	Upper
122	100		
105	5.7	123.5	163.5#
77	32.4	85.7	125.7#

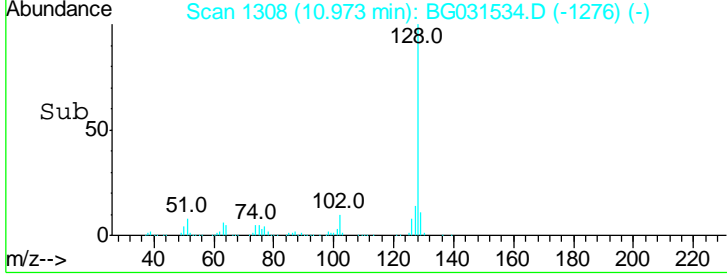
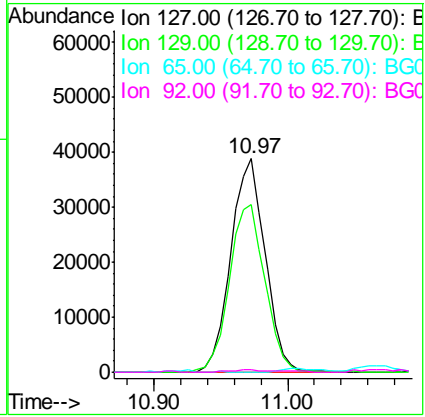
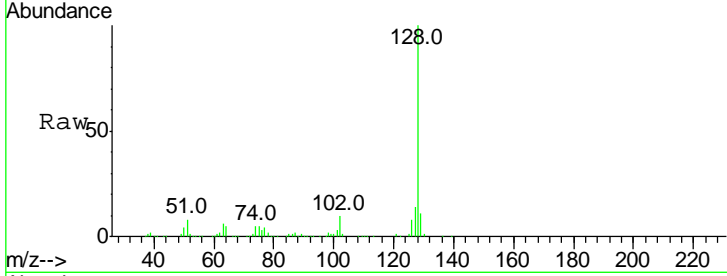




#33
 4-Chloroaniline
 Concen: 15.821 ng
 RT: 10.97 min Scan# 1308
 Delta R.T. -0.11 min
 Lab File: BG031534.D
 Acq: 13 Dec 2017 19:07

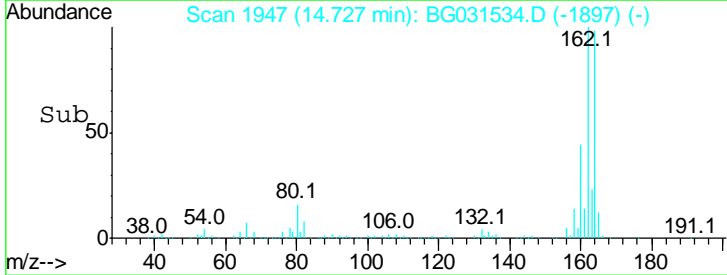
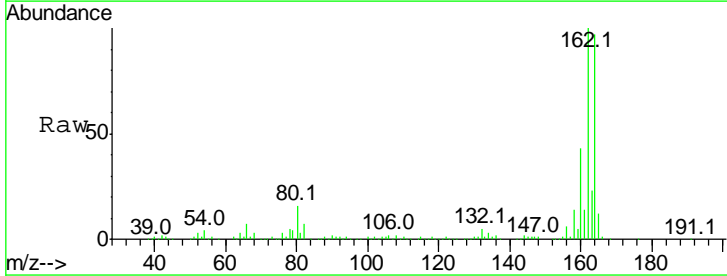
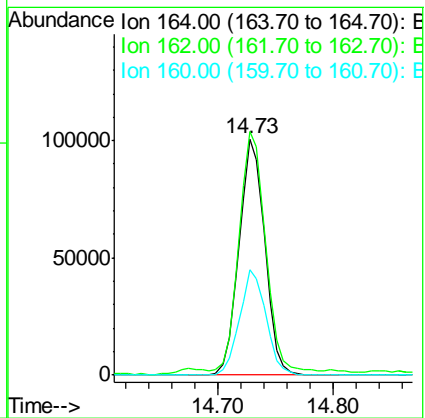
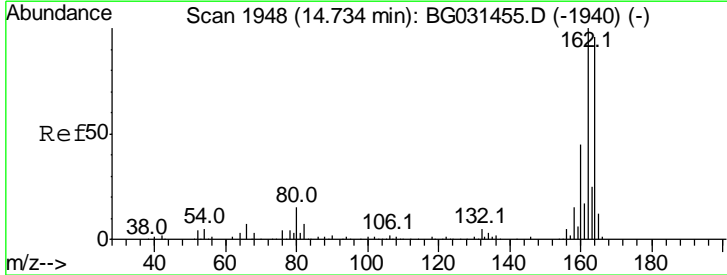
Instrument :
 BNA_G
 ClientSampled :

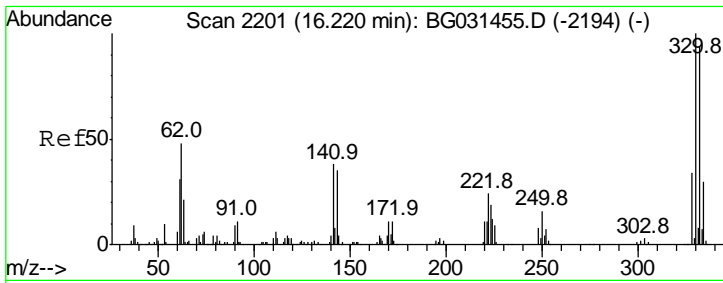
Tgt Ion	Resp	Lower	Upper
127	100		
129	78.5	24.0	36.0#
65	0.0	27.0	40.4#
92	1.1	16.6	25.0#



#38
 Acenaphthene-d10
 Concen: 20.000 ng
 RT: 14.73 min Scan# 1947
 Delta R.T. -0.01 min
 Lab File: BG031534.D
 Acq: 13 Dec 2017 19:07

Tgt Ion	Resp	Lower	Upper
164	100		
162	103.2	78.8	118.2
160	44.7	35.4	53.0

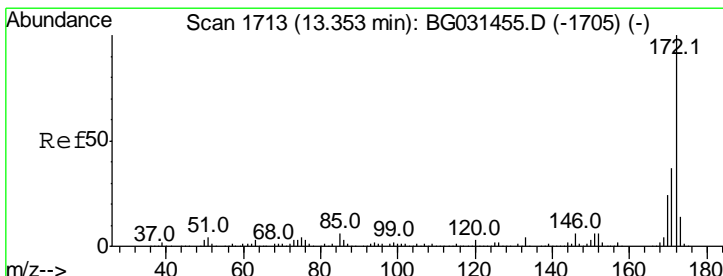
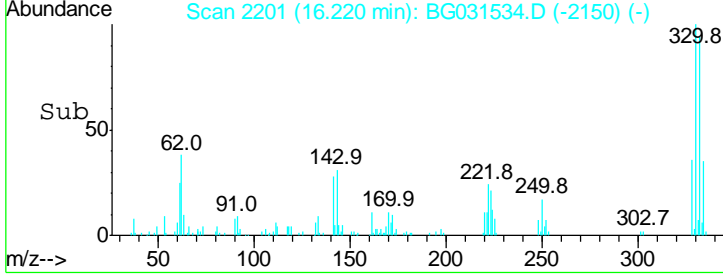
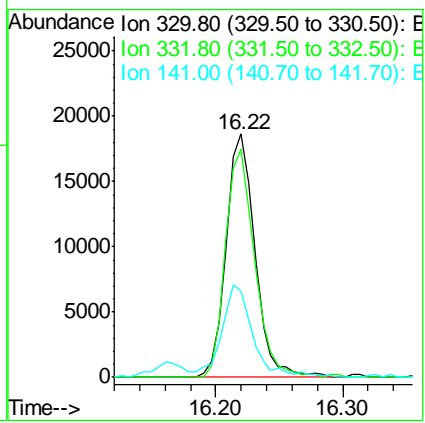
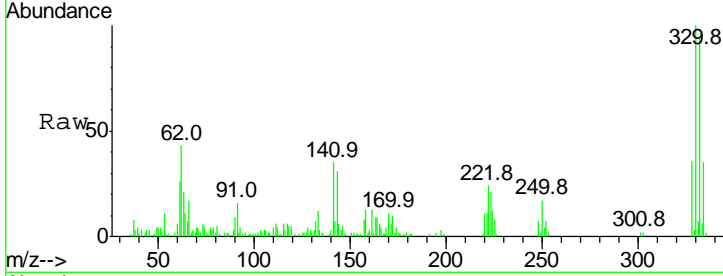




#41
 2,4,6-Tribromophenol
 Concen: 16.121 ng
 RT: 16.22 min Scan# 2201
 Delta R.T. -0.00 min
 Lab File: BG031534.D
 Acq: 13 Dec 2017 19:07

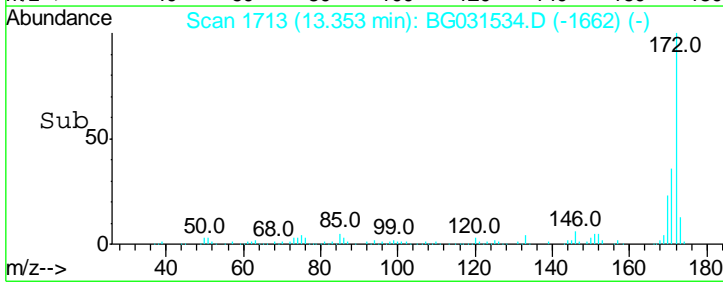
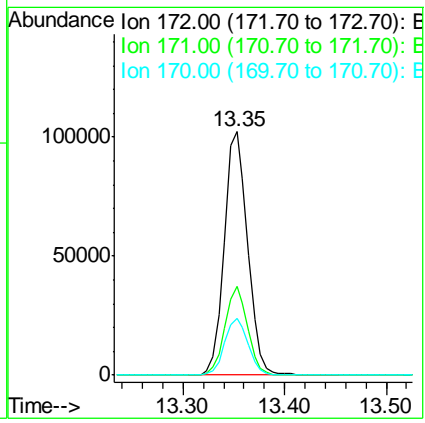
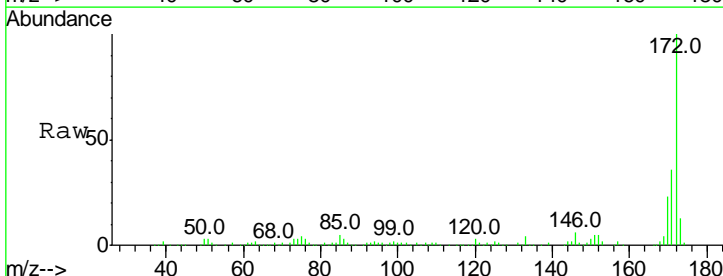
Instrument :
 BNA_G
 ClientSampled :

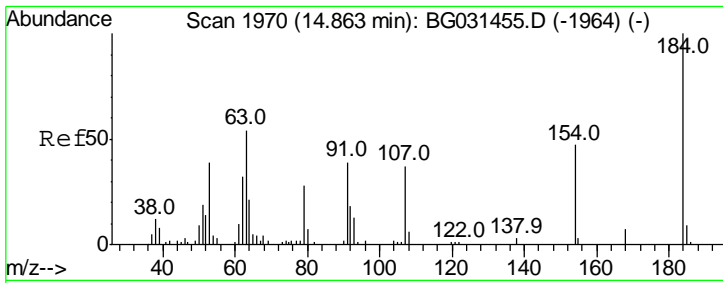
Tgt Ion	Resp	Lower	Upper
330	100		
332	94.4	77.0	115.6
141	40.8	25.2	37.8#



#44
 2-Fluorobiphenyl
 Concen: 15.432 ng
 RT: 13.35 min Scan# 1713
 Delta R.T. -0.00 min
 Lab File: BG031534.D
 Acq: 13 Dec 2017 19:07

Tgt Ion	Resp	Lower	Upper
172	100		
171	36.5	30.0	45.0
170	23.3	19.5	29.3

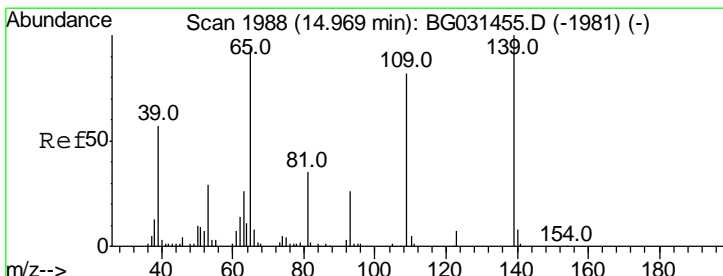
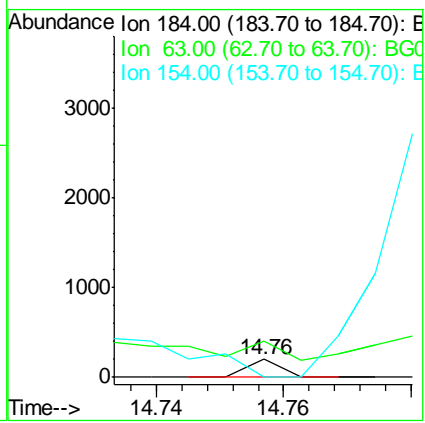
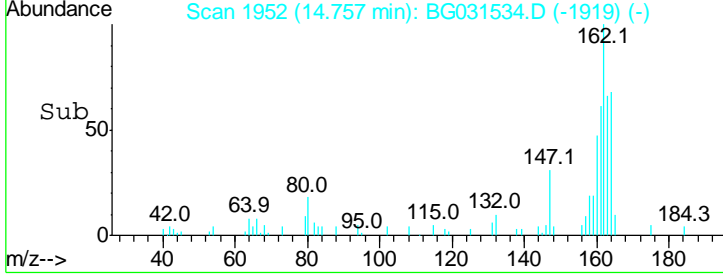
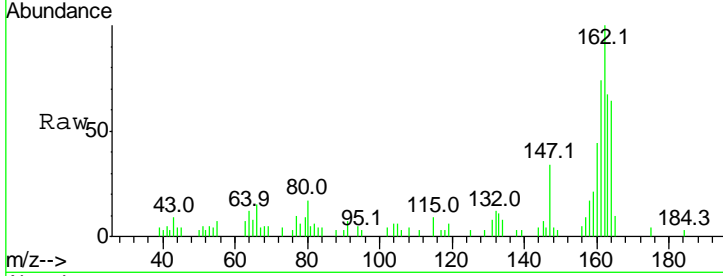




#53
 2,4-Dinitrophenol
 Concen: 9.105 ng
 RT: 14.76 min Scan# 1952
 Delta R.T. -0.11 min
 Lab File: BG031534.D
 Acq: 13 Dec 2017 19:07

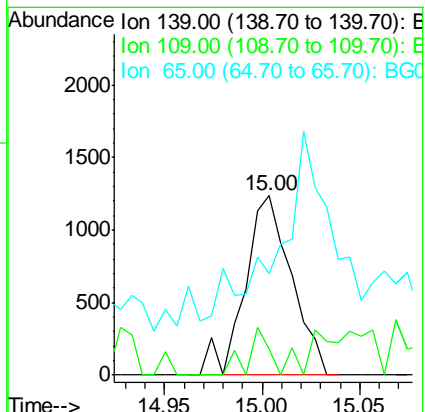
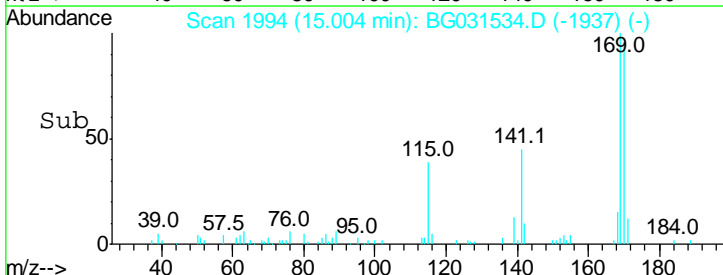
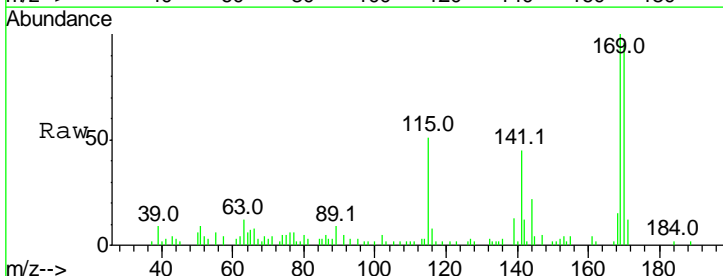
Instrument :
 BNA_G
 ClientSampled :

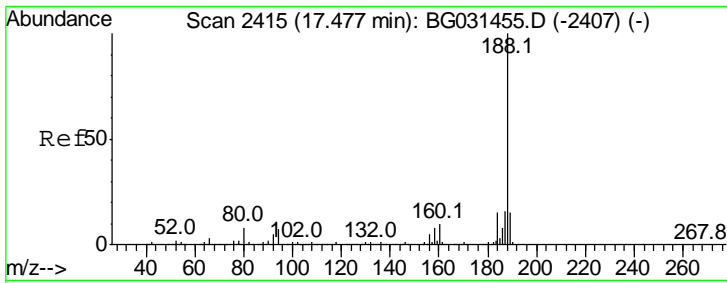
Tgt Ion	Resp	Lower	Upper
184	100		
63	207.6	59.8	89.8#
154	0.0	101.8	152.8#



#55
 4-Nitrophenol
 Concen: 4.577 ng
 RT: 15.00 min Scan# 1994
 Delta R.T. 0.04 min
 Lab File: BG031534.D
 Acq: 13 Dec 2017 19:07

Tgt Ion	Resp	Lower	Upper
139	100		
109	14.6	62.2	102.2#
65	56.5	97.2	137.2#

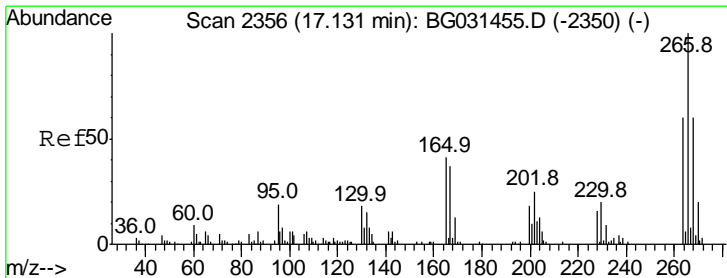
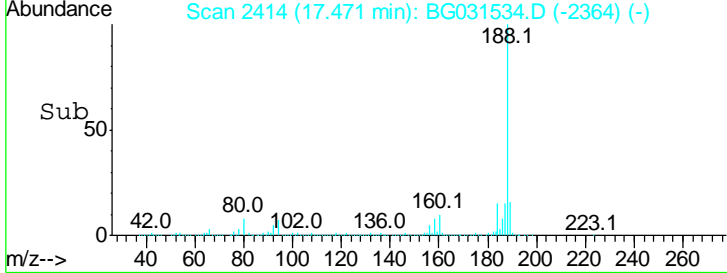
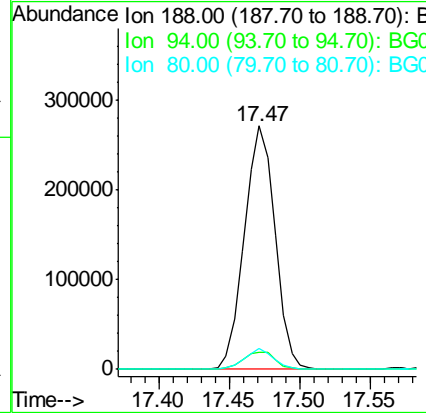
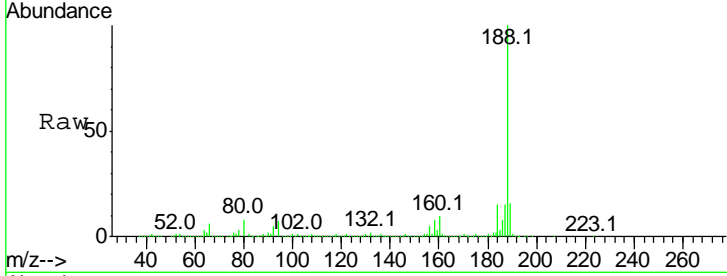




#63
 Phenanthrene-d10
 Concen: 20.000 ng
 RT: 17.47 min Scan# 2414
 Delta R.T. -0.01 min
 Lab File: BG031534.D
 Acq: 13 Dec 2017 19:07

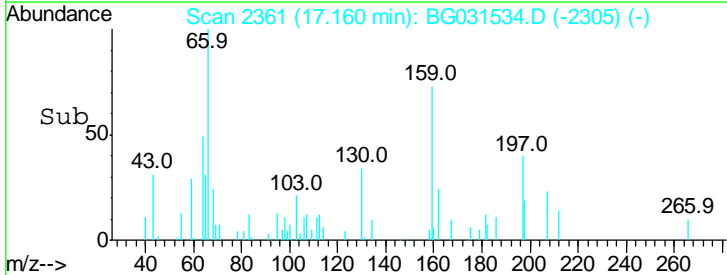
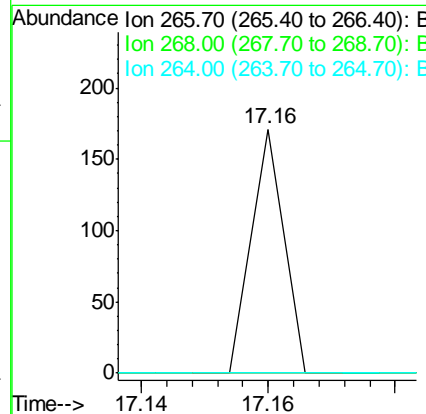
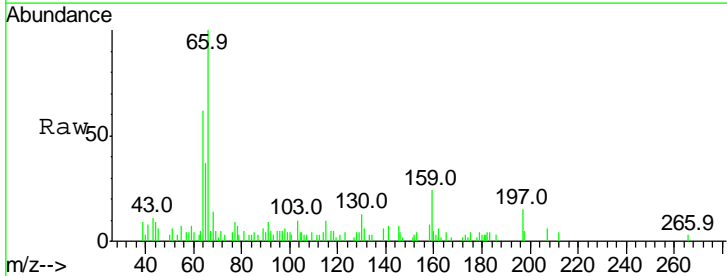
Instrument :
 BNA_G
 ClientSampled :

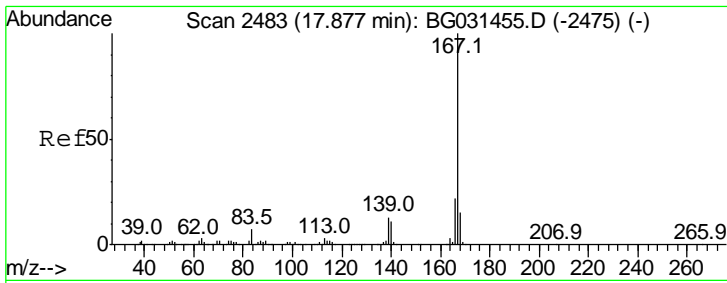
Tgt Ion	Resp	Lower	Upper
188	100		
94	6.8	6.9	10.3#
80	8.5	7.7	11.5



#69
 Pentachlorophenol
 Concen: 5.685 ng
 RT: 17.16 min Scan# 2361
 Delta R.T. 0.03 min
 Lab File: BG031534.D
 Acq: 13 Dec 2017 19:07

Tgt Ion	Resp	Lower	Upper
266	100		
268	0.0	51.1	76.7#
264	0.0	49.6	74.4#

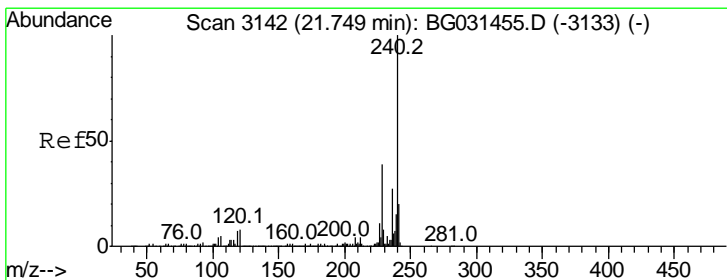
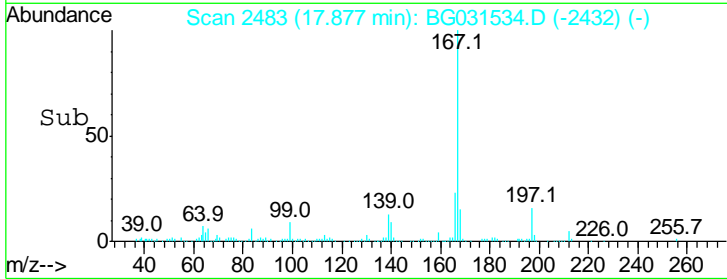
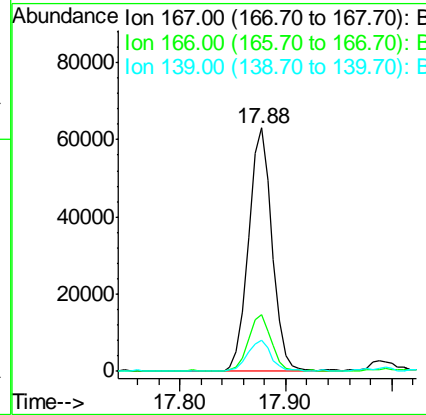
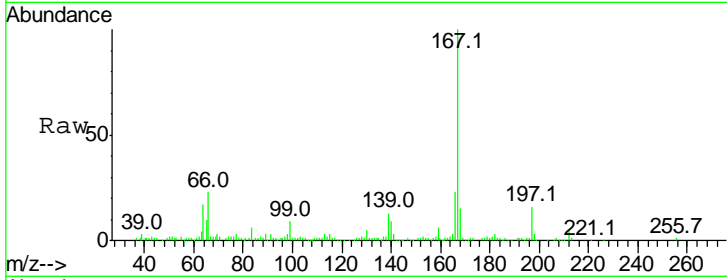




#72
 Carbazole
 Concen: 5.058 ng
 RT: 17.88 min Scan# 2483
 Delta R.T. -0.00 min
 Lab File: BG031534.D
 Acq: 13 Dec 2017 19:07

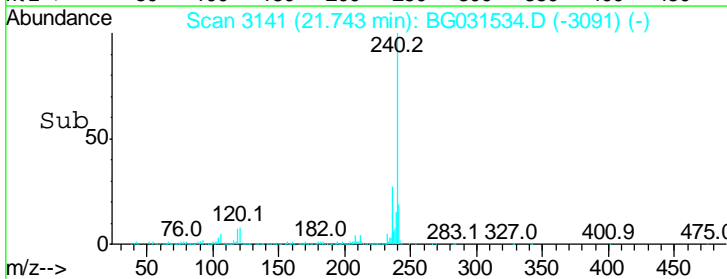
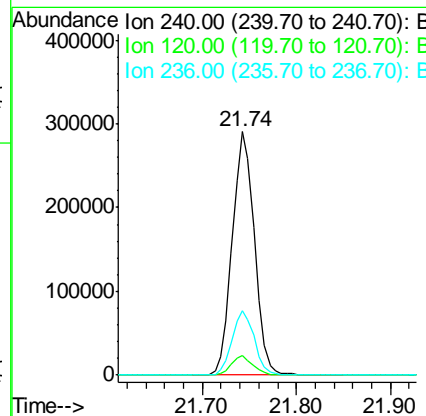
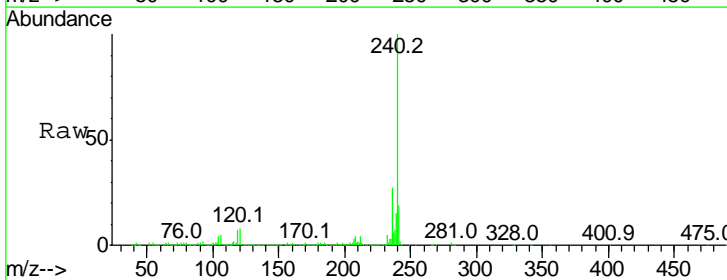
Instrument :
 BNA_G
 ClientSampled :

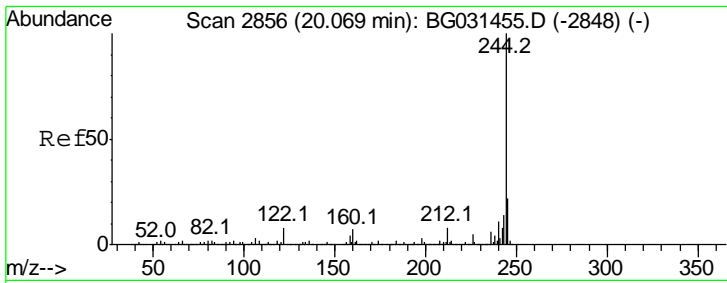
Tgt Ion	Resp	Lower	Upper
167	100		
166	23.3	18.2	27.4
139	12.9	9.4	14.2



#75
 Chrysene-d12
 Concen: 20.000 ng
 RT: 21.74 min Scan# 3141
 Delta R.T. -0.01 min
 Lab File: BG031534.D
 Acq: 13 Dec 2017 19:07

Tgt Ion	Resp	Lower	Upper
240	100		
120	7.9	6.8	10.2
236	26.6	20.9	31.3

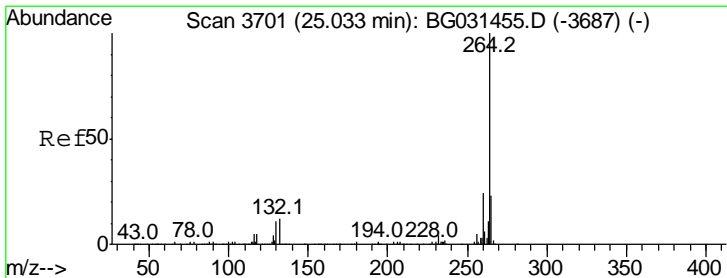
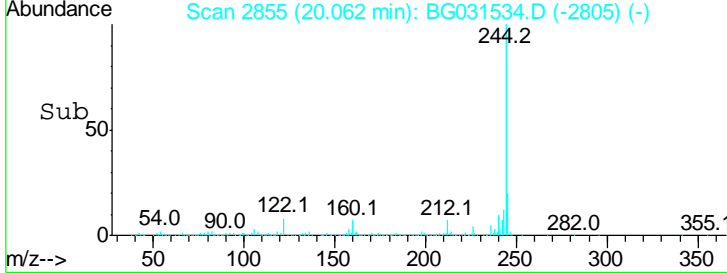
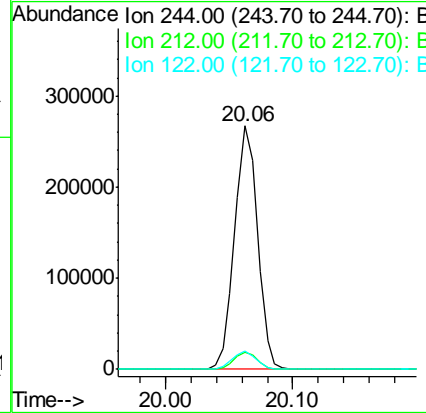
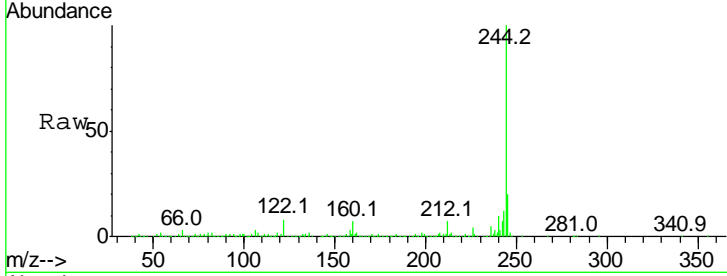




#78
 Terphenyl-d14
 Concen: 15.948 ng
 RT: 20.06 min Scan# 2855
 Delta R.T. -0.01 min
 Lab File: BG031534.D
 Acq: 13 Dec 2017 19:07

Instrument :
 BNA_G
 ClientSampled :

Tgt Ion	Ratio	Lower	Upper
244	100		
212	6.9	5.8	8.8
122	7.6	7.0	10.4



#86
 Perylene-d12
 Concen: 20.000 ng
 RT: 25.03 min Scan# 3700
 Delta R.T. -0.01 min
 Lab File: BG031534.D
 Acq: 13 Dec 2017 19:07

Tgt Ion	Ratio	Lower	Upper
264	100		
260	23.4	17.4	26.0
265	20.7	17.7	26.5

