

Data Path : Z:\svoasrv\HPCHEM1\BNA_G\Data\BG121322\
 Data File : BG055949.D
 Acq On : 13 Dec 2022 19:15
 Operator : CG/JU
 Sample : SSTDICC020
 Misc :
 ALS Vial : 5 Sample Multiplier: 1

Instrument :
 BNA_G
 ClientSampleId :
 SSTDICC020

Quant Time: Dec 14 01:55:11 2022
 Quant Method : Z:\svoasrv\HPCHEM1\BNA_G\Methods\8270-BG121322.M
 Quant Title : ASP BNA STANDARDS FOR 5 POINT CALIBRATION
 QLast Update : Wed Dec 14 01:49:58 2022
 Response via : Initial Calibration

Compound	R.T.	QIon	Response	Conc	Units	Dev(Min)	
Internal Standards							
1) 1,4-Dichlorobenzene-d4	8.372	152	4993	20.000	ng	0.00	
21) Naphthalene-d8	11.204	136	19161	20.000	ng	# 0.00	
39) Acenaphthene-d10	14.976	164	18662	20.000	ng	0.00	
64) Phenanthrene-d10	17.714	188	56939	20.000	ng	0.00	
76) Chrysene-d12	22.021	240	73372	20.000	ng	0.00	
86) Perylene-d12	25.517	264	83848	20.000	ng	0.00	
System Monitoring Compounds							
5) 2-Fluorophenol	5.887	112	8793	31.832	ng	0.00	
7) Phenol-d6	7.491	99	10896	29.632	ng	0.00	
23) Nitrobenzene-d5	9.542	82	10415	28.729	ng	0.00	
42) 2,4,6-Tribromophenol	16.451	330	18536	70.537	ng	0.00	
45) 2-Fluorobiphenyl	13.607	172	54259	43.557	ng	0.00	
79) Terphenyl-d14	20.288	244	167825	45.749	ng	0.00	
Target Compounds							
2) 1,4-Dioxane	3.719	88	1181	10.004	ng	# 85	Qvalue
3) Pyridine	4.136	79	4337	11.976	ng	92	
4) n-Nitrosodimethylamine	4.042	42	3977	20.742	ng	# 98	
6) Aniline	7.685	93	6755	14.626	ng	98	
8) 2-Chlorophenol	7.926	128	5595	17.718	ng	97	
9) Benzaldehyde	7.497	77	3627	14.524	ng	97	
10) Phenol	7.520	94	6023	14.629	ng	98	
11) bis(2-Chloroethyl)ether	7.773	93	3652	11.574	ng	88	
12) 1,3-Dichlorobenzene	8.261	146	7282	19.614	ng	93	
13) 1,4-Dichlorobenzene	8.408	146	7371	19.647	ng	97	
14) 1,2-Dichlorobenzene	8.737	146	7043	19.590	ng	95	
15) Benzyl Alcohol	8.596	79	5852	19.582	ng	87	
16) 2,2'-oxybis(1-Chloropr...	8.901	45	5182	9.072	ng	87	
17) 2-Methylphenol	8.795	107	4729	16.178	ng	# 86	
18) Hexachloroethane	9.477	117	2281	17.665	ng	# 87	
19) n-Nitroso-di-n-propyla...	9.171	70	4168	14.753	ng	97	
20) 3+4-Methylphenols	9.124	107	7099	17.385	ng	95	
22) Acetophenone	9.195	105	9321	18.721	ng	91	
24) Nitrobenzene	9.589	77	5119	13.519	ng	98	
25) Isophorone	10.106	82	11598	16.885	ng	99	
26) 2-Nitrophenol	10.300	139	3187	18.232	ng	89	
27) 2,4-Dimethylphenol	10.341	122	5544	20.839	ng	90	
28) bis(2-Chloroethoxy)met...	10.582	93	5254	14.248	ng	94	
29) 2,4-Dichlorophenol	10.828	162	7588	23.829	ng	99	
30) 1,2,4-Trichlorobenzene	11.063	180	10149	27.434	ng	98	
31) Naphthalene	11.257	128	20063	19.369	ng	99	
32) Benzoic acid	10.417	122	3930	17.955	ng	95	
33) 4-Chloroaniline	11.351	127	8759	20.499	ng	# 94	
34) Hexachlorobutadiene	11.533	225	9649	38.197	ng	91	
35) Caprolactam	12.097	113	2377	21.571	ng	92	
36) 4-Chloro-3-methylphenol	12.432	107	7440	21.258	ng	97	
37) 2-Methylnaphthalene	12.832	142	17439	22.486	ng	98	
38) 1-Methylnaphthalene	13.049	142	17370	23.071	ng	99	
40) 1,2,4,5-Tetrachloroben...	13.190	216	15731	26.824	ng	99	
41) Hexachlorocyclopentadiene	13.173	237	8694	29.413	ng	95	
43) 2,4,6-Trichlorophenol	13.414	196	9232	23.077	ng	97	

Data Path : Z:\svoasrv\HPCHEM1\BNA_G\Data\BG121322\
 Data File : BG055949.D
 Acq On : 13 Dec 2022 19:15
 Operator : CG/JU
 Sample : SSTDICC020
 Misc :
 ALS Vial : 5 Sample Multiplier: 1

Instrument :
 BNA_G
 ClientSampleId :
 SSTDICC020

Quant Time: Dec 14 01:55:11 2022
 Quant Method : Z:\svoasrv\HPCHEM1\BNA_G\Methods\8270-BG121322.M
 Quant Title : ASP BNA STANDARDS FOR 5 POINT CALIBRATION
 QLast Update : Wed Dec 14 01:49:58 2022
 Response via : Initial Calibration

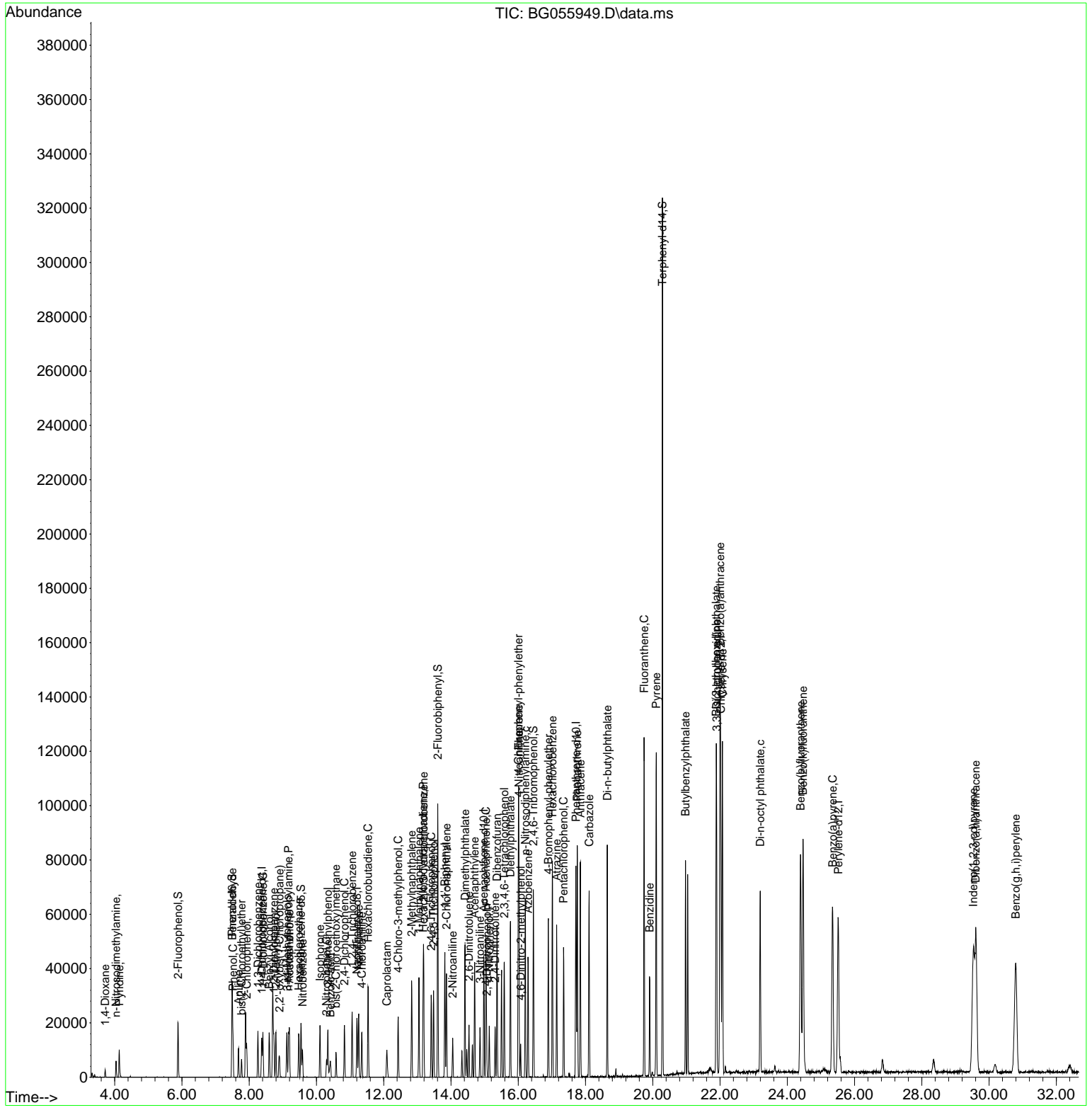
Compound	R.T.	QIon	Response	Conc	Units	Dev(Min)
44) 2,4,5-Trichlorophenol	13.484	196	10834	24.644	ng	96
46) 1,1'-Biphenyl	13.819	154	25916	19.057	ng	99
47) 2-Chloronaphthalene	13.866	162	20820	19.697	ng	95
48) 2-Nitroaniline	14.048	65	3566	10.261	ng	96
49) Acenaphthylene	14.706	152	33770	19.401	ng	99
50) Dimethylphthalate	14.418	163	33900	22.787	ng	98
51) 2,6-Dinitrotoluene	14.536	165	5161	16.967	ng	89
52) Acenaphthene	15.041	154	22547	19.820	ng	96
53) 3-Nitroaniline	14.865	138	5108	15.297	ng	96
54) 2,4-Dinitrophenol	15.065	184	3715	21.242	ng #	75
55) Dibenzofuran	15.370	168	38225	21.781	ng	99
56) 4-Nitrophenol	15.141	139	4295	16.388	ng #	79
57) 2,4-Dinitrotoluene	15.311	165	7490	17.465	ng #	96
58) Fluorene	16.016	166	31435	22.427	ng	96
59) 2,3,4,6-Tetrachlorophenol	15.587	232	12197	28.633	ng #	98
60) Diethylphthalate	15.770	149	33252	22.108	ng	97
61) 4-Chlorophenyl-phenyle...	16.005	204	20939	27.176	ng	99
62) 4-Nitroaniline	16.022	138	5831	16.705	ng #	80
63) Azobenzene	16.293	77	20055	15.273	ng	99
65) 4,6-Dinitro-2-methylph...	16.075	198	5294	16.651	ng	92
66) n-Nitrosodiphenylamine	16.210	169	29796	18.988	ng	97
67) 4-Bromophenyl-phenylether	16.898	248	16897	26.045	ng	91
68) Hexachlorobenzene	17.015	284	20772	28.876	ng	99
69) Atrazine	17.144	200	14859	23.943	ng	95
70) Pentachlorophenol	17.350	266	11938	27.128	ng	95
71) Phenanthrene	17.756	178	59955	19.512	ng	96
72) Anthracene	17.849	178	60057	20.116	ng	98
73) Carbazole	18.108	167	50450	18.797	ng	97
74) Di-n-butylphthalate	18.649	149	59900	17.974	ng	99
75) Fluoranthene	19.741	202	87699	23.461	ng	100
77) Benzidine	19.906	184	24222	14.270	ng	98
78) Pyrene	20.106	202	88333	17.786	ng	98
80) Butylbenzylphthalate	20.975	149	24841	12.777	ng	96
81) Benzo(a)anthracene	22.003	228	104077	20.595	ng	98
82) 3,3'-Dichlorobenzidine	21.898	252	37691	21.226	ng	92
83) Chrysene	22.074	228	96606	20.080	ng	99
84) Bis(2-ethylhexyl)phtha...	21.886	149	36624	13.107	ng	98
85) Di-n-octyl phthalate	23.196	149	64619	13.514	ng	100
87) Indeno(1,2,3-cd)pyrene	29.530	276	135655	19.749	ng #	98
88) Benzo(b)fluoranthene	24.395	252	111127	20.351	ng	99
89) Benzo(k)fluoranthene	24.471	252	108687	19.968	ng	97
90) Benzo(a)pyrene	25.352	252	92732	19.789	ng #	97
91) Dibenzo(a,h)anthracene	29.606	278	114393	20.379	ng	98
92) Benzo(g,h,i)perylene	30.793	276	109155	19.294	ng	94

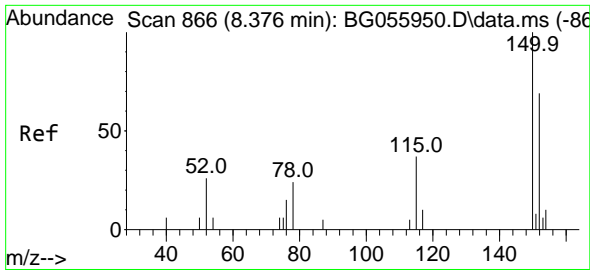
(#) = qualifier out of range (m) = manual integration (+) = signals summed

Data Path : Z:\svoasrv\HPCHEM1\BNA_G\Data\BG121322\
 Data File : BG055949.D
 Acq On : 13 Dec 2022 19:15
 Operator : CG/JU
 Sample : SSTDICC020
 Misc :
 ALS Vial : 5 Sample Multiplier: 1

Instrument :
 BNA_G
 ClientSampleId :
 SSTDICC020

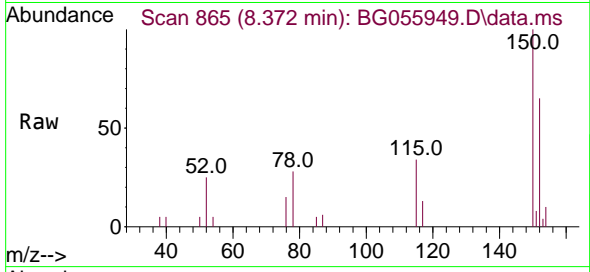
Quant Time: Dec 14 01:55:11 2022
 Quant Method : Z:\svoasrv\HPCHEM1\BNA_G\Methods\8270-BG121322.M
 Quant Title : ASP BNA STANDARDS FOR 5 POINT CALIBRATION
 QLast Update : Wed Dec 14 01:49:58 2022
 Response via : Initial Calibration



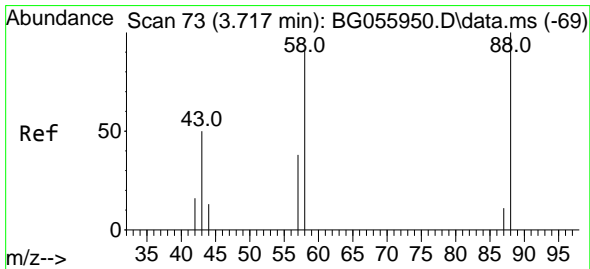
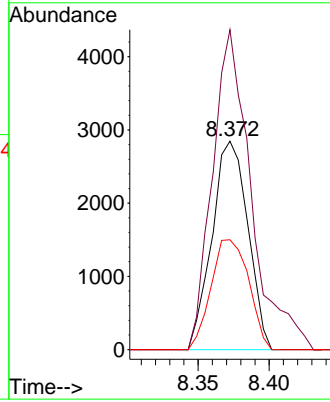
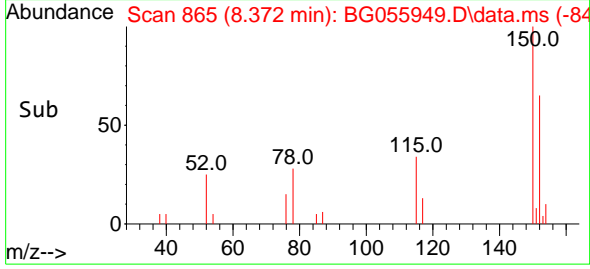


#1
 1,4-Dichlorobenzene-d4
 Concen: 20.000 ng
 RT: 8.372 min Scan# 865
 Delta R.T. -0.004 min
 Lab File: BG055949.D
 Acq: 13 Dec 2022 19:15

Instrument : BNA_G
 ClientSampleId : SSTDICC020

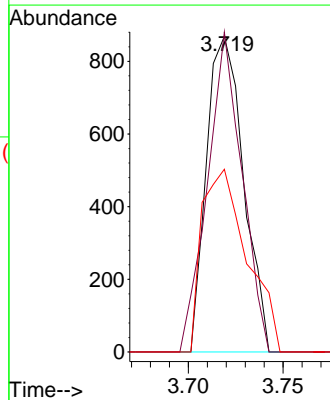
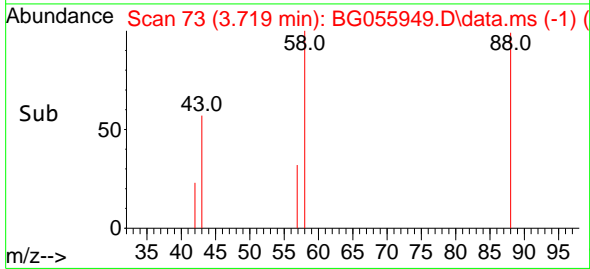
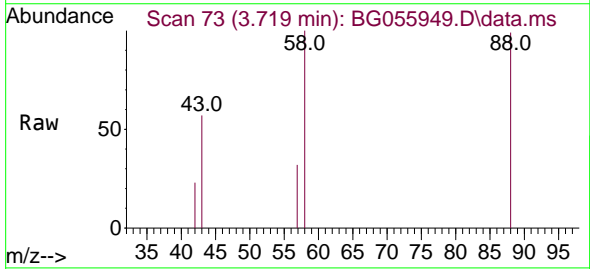


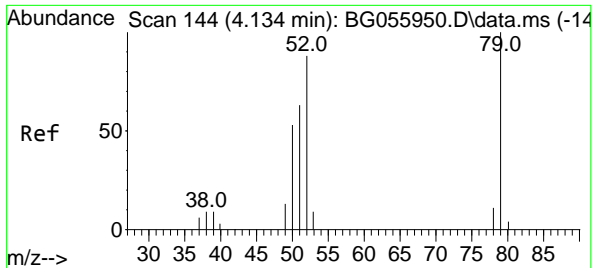
Tgt Ion:152 Resp: 4993
 Ion Ratio Lower Upper
 152 100
 150 153.6 115.7 173.5
 115 52.7 43.0 64.4



#2
 1,4-Dioxane
 Concen: 10.004 ng
 RT: 3.719 min Scan# 73
 Delta R.T. 0.002 min
 Lab File: BG055949.D
 Acq: 13 Dec 2022 19:15

Tgt Ion: 88 Resp: 1181
 Ion Ratio Lower Upper
 88 100
 58 94.5 67.0 100.4
 43 70.6 45.7 68.5#

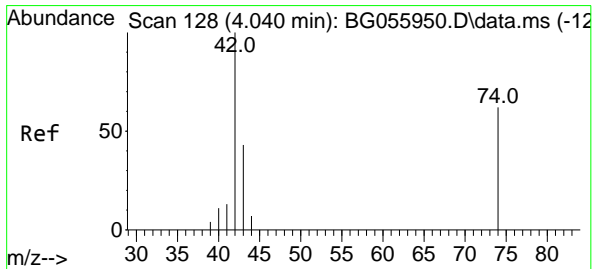
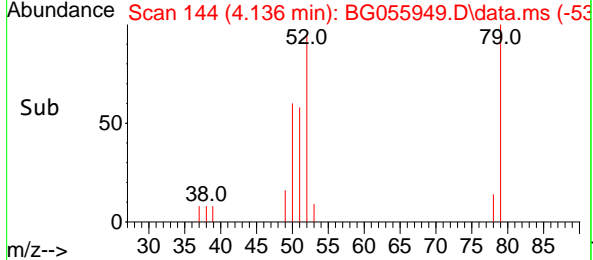
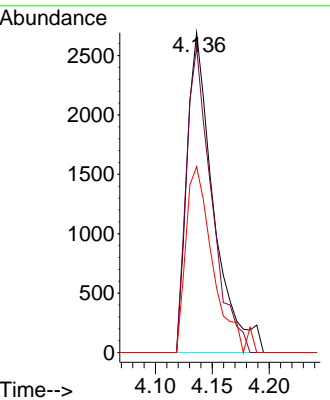
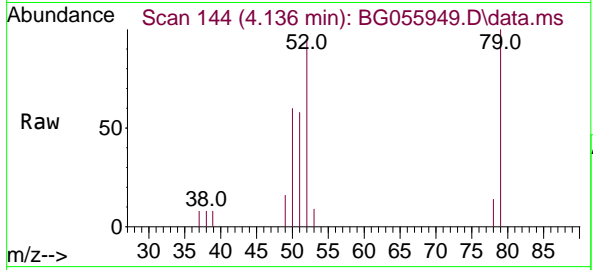




#3
Pyridine
 Concen: 11.976 ng
 RT: 4.136 min Scan# 14
 Delta R.T. 0.002 min
 Lab File: BG055949.D
 Acq: 13 Dec 2022 19:15

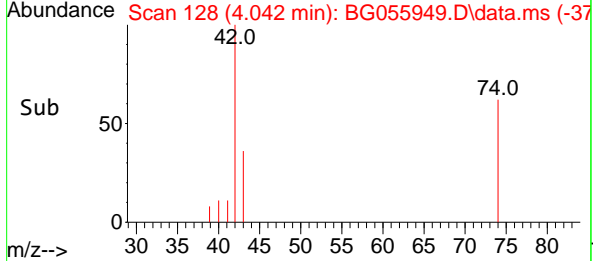
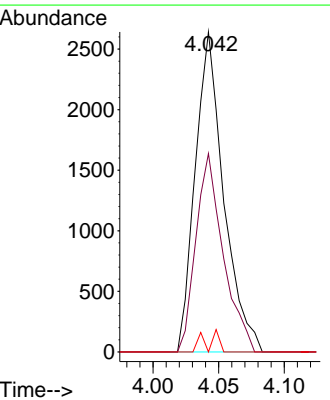
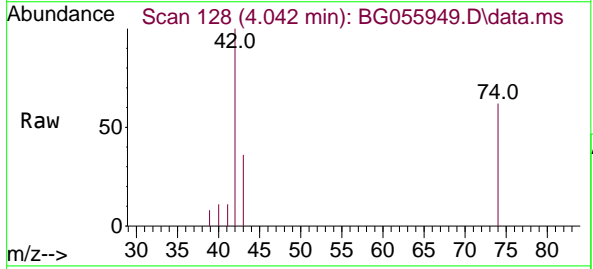
Instrument :
 BNA_G
ClientSampleId :
 SSTDICC020

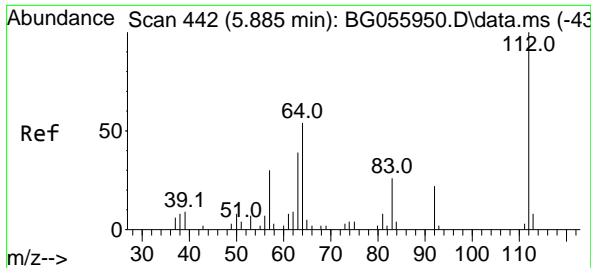
Tgt Ion	Resp	Lower	Upper
79	4337		
79	100		
52	95.4	70.3	105.5
51	58.1	50.6	76.0



#4
n-Nitrosodimethylamine
 Concen: 20.742 ng
 RT: 4.042 min Scan# 128
 Delta R.T. 0.002 min
 Lab File: BG055949.D
 Acq: 13 Dec 2022 19:15

Tgt Ion	Resp	Lower	Upper
42	3977		
42	100		
74	62.0	49.8	74.6
44	0.0	5.2	7.8





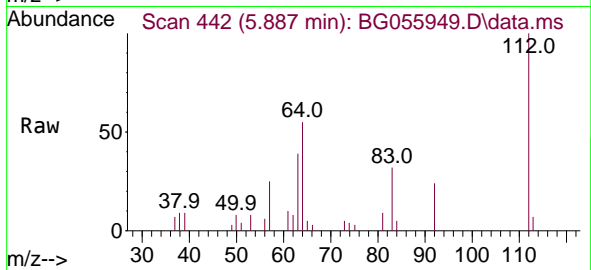
#5
 2-Fluorophenol
 Concen: 31.832 ng
 RT: 5.887 min Scan# 44
 Delta R.T. 0.002 min
 Lab File: BG055949.D
 Acq: 13 Dec 2022 19:15

Instrument :

BNA_G

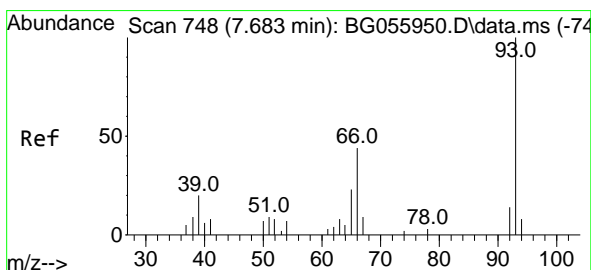
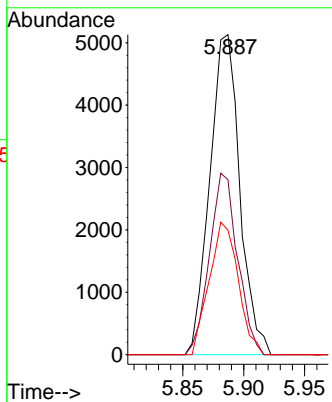
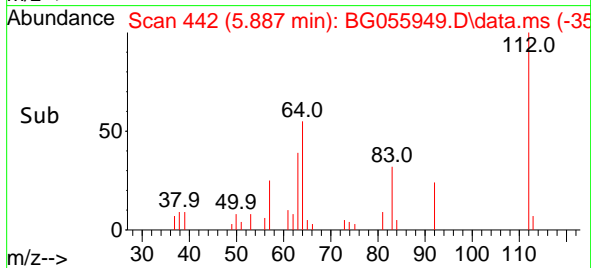
ClientSampleId :

SSTDICC020

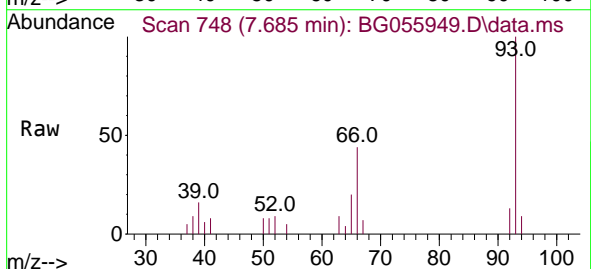


Tgt Ion: 112 Resp: 8793

Ion	Ratio	Lower	Upper
112	100		
64	54.7	43.0	64.4
63	38.9	31.4	47.2

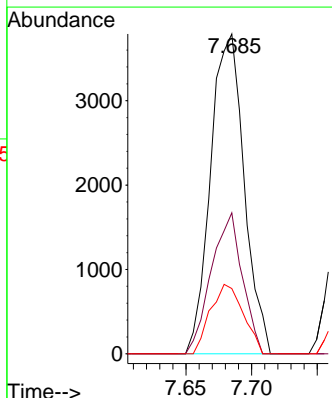
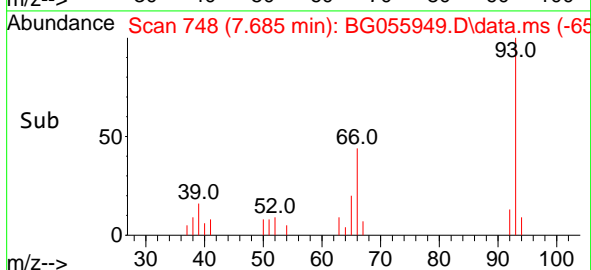


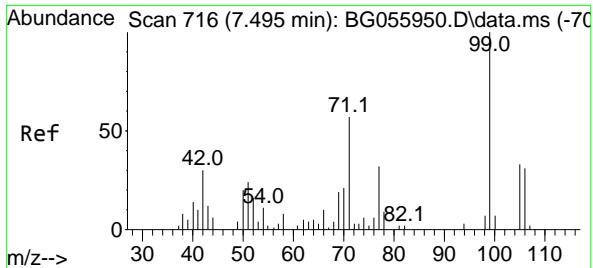
#6
 Aniline
 Concen: 14.626 ng
 RT: 7.685 min Scan# 748
 Delta R.T. 0.002 min
 Lab File: BG055949.D
 Acq: 13 Dec 2022 19:15



Tgt Ion: 93 Resp: 6755

Ion	Ratio	Lower	Upper
93	100		
66	44.1	35.5	53.3
65	20.4	18.2	27.2

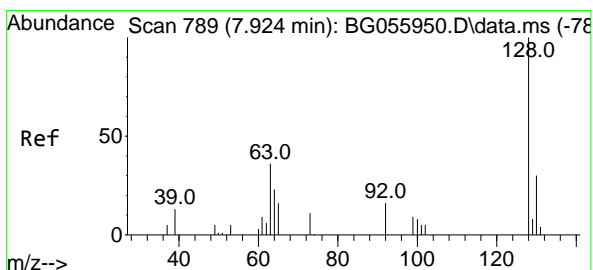
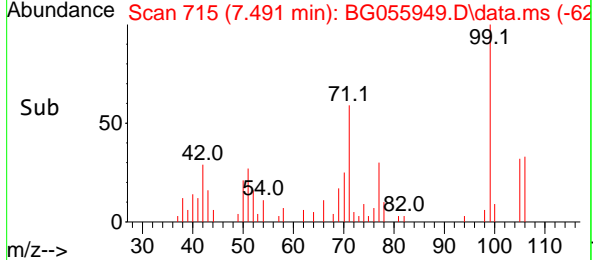
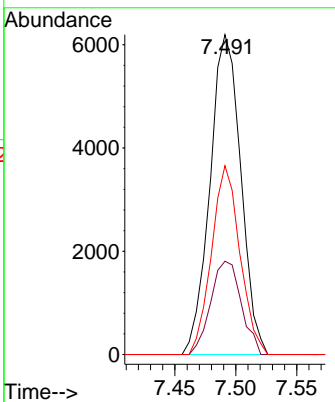
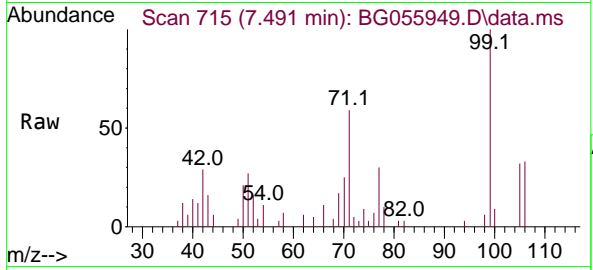




#7
 Phenol-d6
 Concen: 29.632 ng
 RT: 7.491 min Scan# 715
 Delta R.T. -0.004 min
 Lab File: BG055949.D
 Acq: 13 Dec 2022 19:15

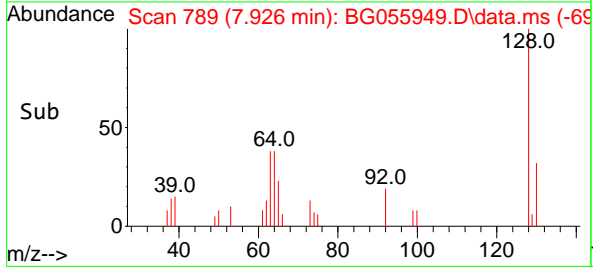
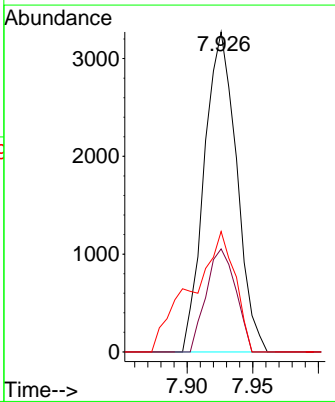
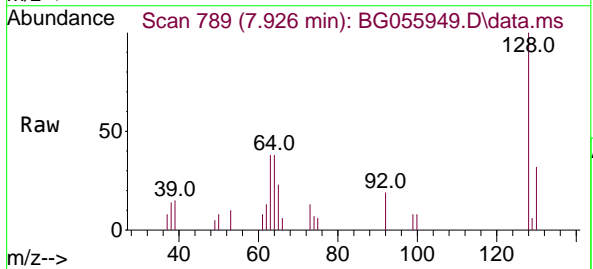
Instrument : BNA_G
 ClientSampleId : SSTDICC020

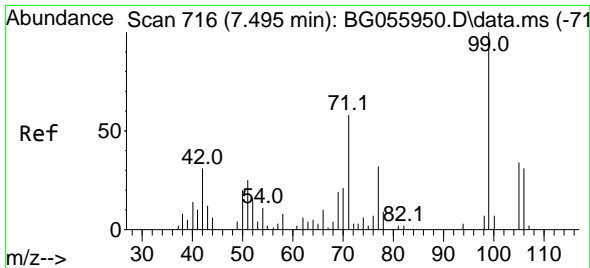
Tgt Ion	Resp	Lower	Upper
99	10896		
42	29.2	24.3	36.5
71	59.0	45.6	68.4



#8
 2-Chlorophenol
 Concen: 17.718 ng
 RT: 7.926 min Scan# 789
 Delta R.T. 0.002 min
 Lab File: BG055949.D
 Acq: 13 Dec 2022 19:15

Tgt Ion	Resp	Lower	Upper
128	5595		
130	32.2	9.9	49.9
64	37.6	16.7	56.7

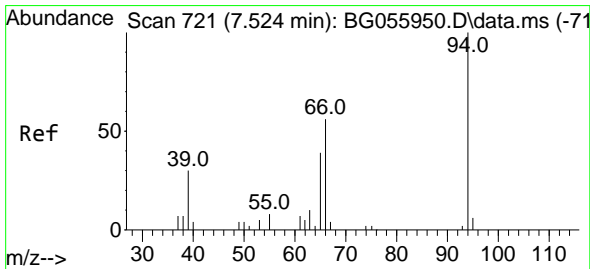
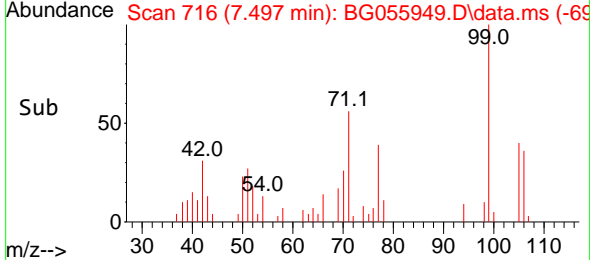
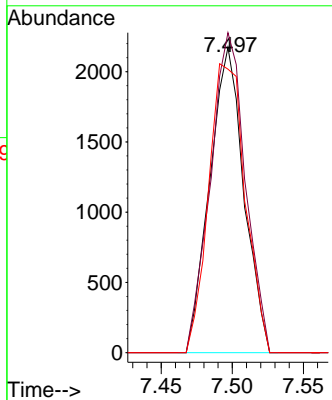
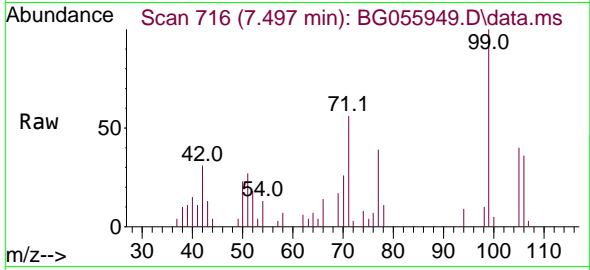




#9
 Benzaldehyde
 Concen: 14.524 ng
 RT: 7.497 min Scan# 71
 Delta R.T. 0.002 min
 Lab File: BG055949.D
 Acq: 13 Dec 2022 19:15

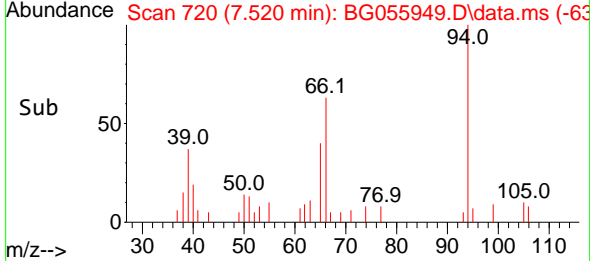
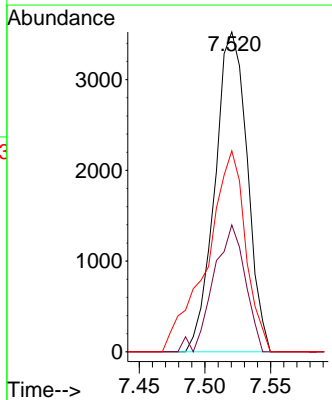
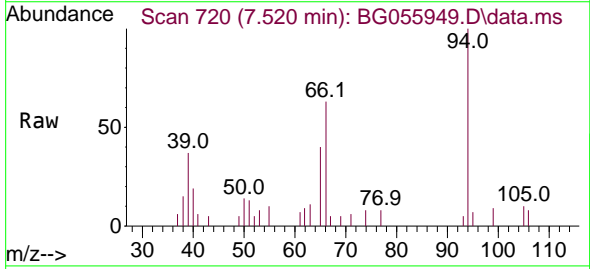
Instrument : BNA_G
 ClientSampleId : SSTDICC020

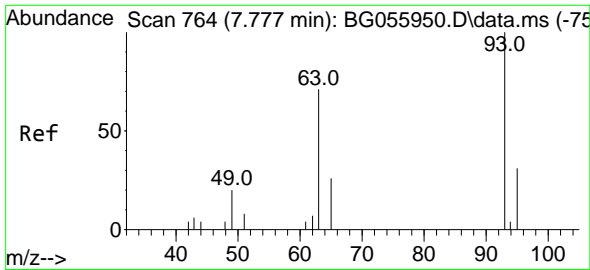
Tgt Ion	Resp	Lower	Upper
77	3627		
77	100		
105	104.8	83.1	123.1
106	92.9	76.3	116.3



#10
 Phenol
 Concen: 14.629 ng
 RT: 7.520 min Scan# 720
 Delta R.T. -0.004 min
 Lab File: BG055949.D
 Acq: 13 Dec 2022 19:15

Tgt Ion	Resp	Lower	Upper
94	6023		
94	100		
65	39.6	18.9	58.9
66	62.8	41.5	81.5





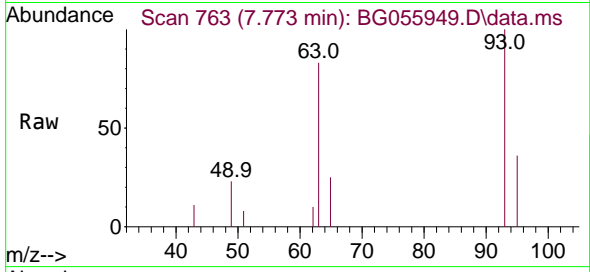
#11
 bis(2-Chloroethyl)ether
 Concen: 11.574 ng
 RT: 7.773 min Scan# 763
 Delta R.T. -0.004 min
 Lab File: BG055949.D
 Acq: 13 Dec 2022 19:15

Instrument :

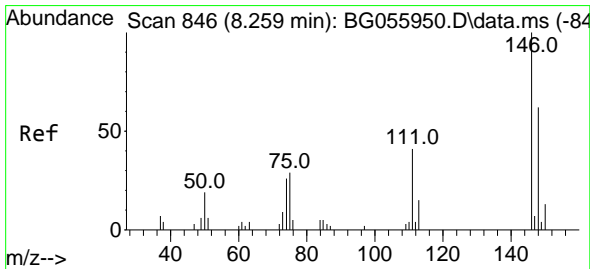
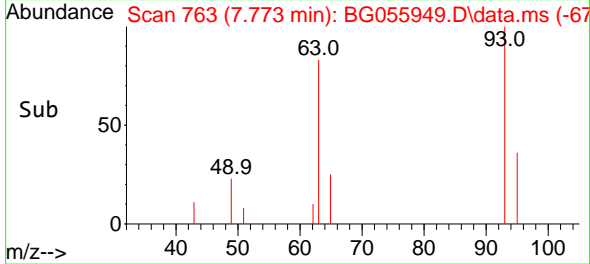
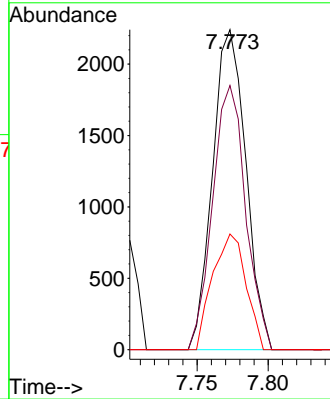
BNA_G

ClientSampleId :

SSTDICC020

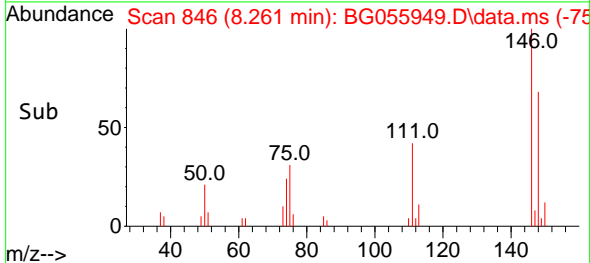
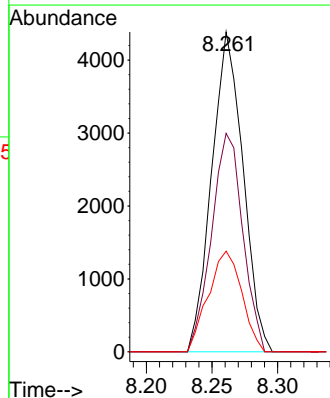
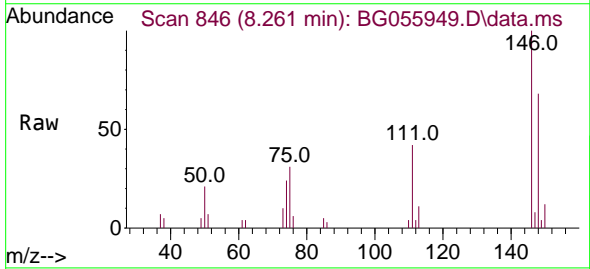


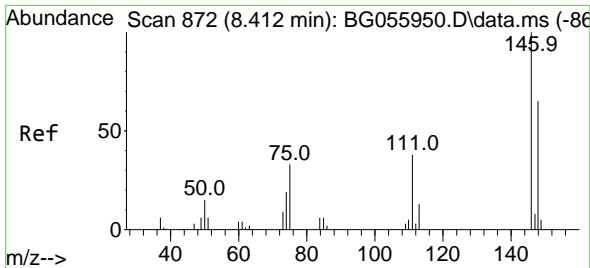
Tgt Ion: 93 Resp: 3652
 Ion Ratio Lower Upper
 93 100
 63 82.5 51.4 91.4
 95 36.1 11.3 51.3



#12
 1,3-Dichlorobenzene
 Concen: 19.614 ng
 RT: 8.261 min Scan# 846
 Delta R.T. 0.002 min
 Lab File: BG055949.D
 Acq: 13 Dec 2022 19:15

Tgt Ion:146 Resp: 7282
 Ion Ratio Lower Upper
 146 100
 148 68.3 49.7 74.5
 75 31.5 22.9 34.3

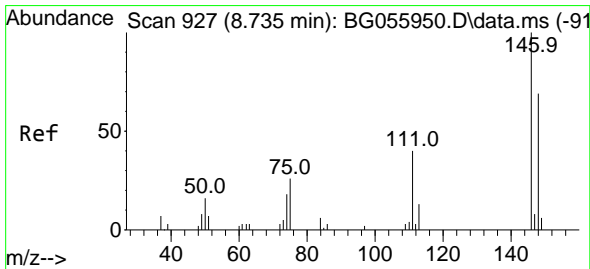
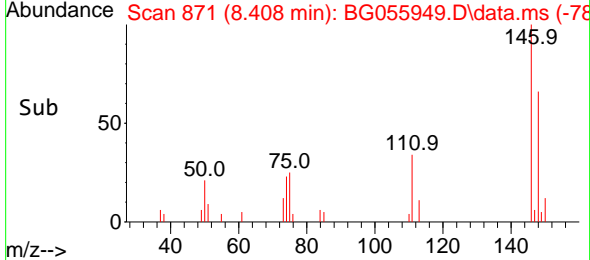
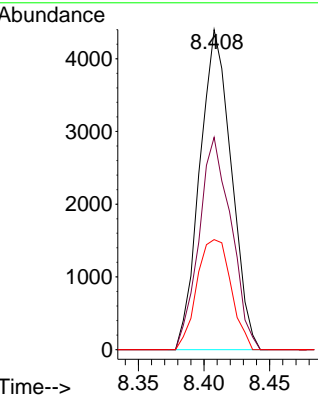
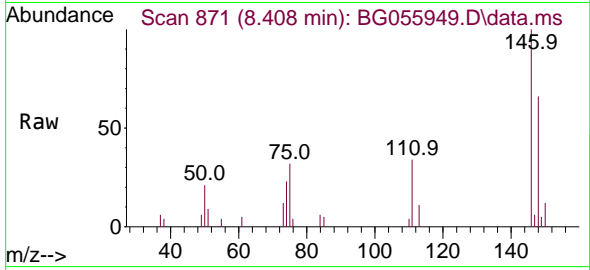




#13
 1,4-Dichlorobenzene
 Concen: 19.647 ng
 RT: 8.408 min Scan# 811
 Delta R.T. -0.004 min
 Lab File: BG055949.D
 Acq: 13 Dec 2022 19:15

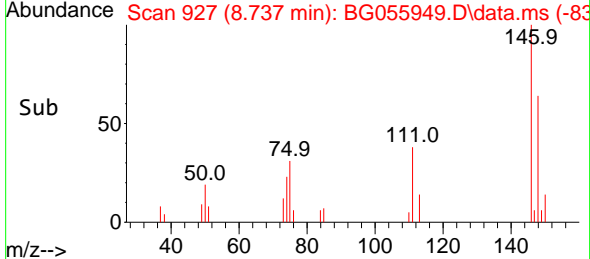
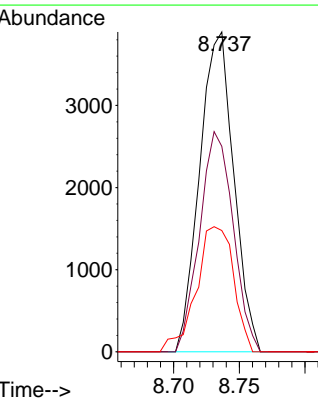
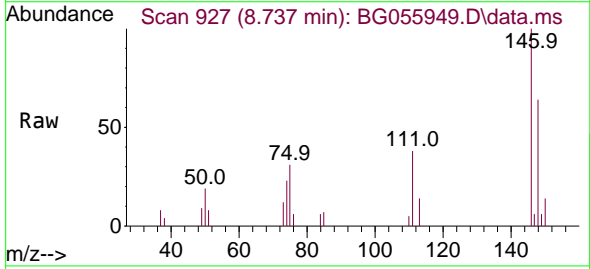
Instrument : BNA_G
 ClientSampleId : SSTDICC020

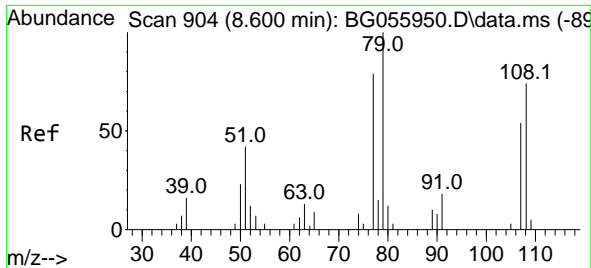
Tgt Ion	Resp	Lower	Upper
146	7371		
148	66.3	52.4	78.6
111	34.4	30.6	46.0



#14
 1,2-Dichlorobenzene
 Concen: 19.590 ng
 RT: 8.737 min Scan# 927
 Delta R.T. 0.002 min
 Lab File: BG055949.D
 Acq: 13 Dec 2022 19:15

Tgt Ion	Resp	Lower	Upper
146	7043		
148	64.2	55.1	82.7
111	37.9	32.4	48.6





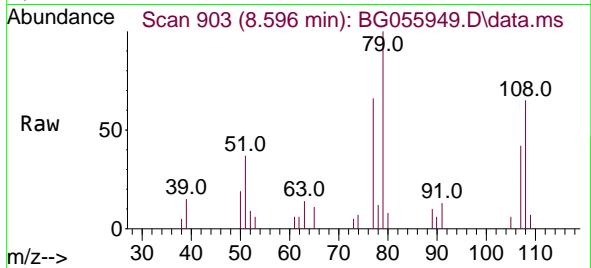
#15
 Benzyl Alcohol
 Concen: 19.582 ng
 RT: 8.596 min Scan# 903
 Delta R.T. -0.004 min
 Lab File: BG055949.D
 Acq: 13 Dec 2022 19:15

Instrument :

BNA_G

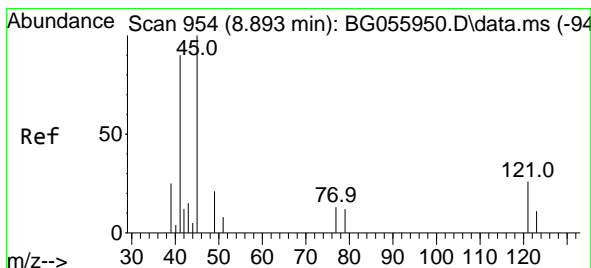
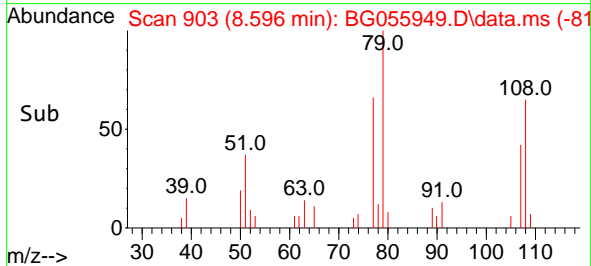
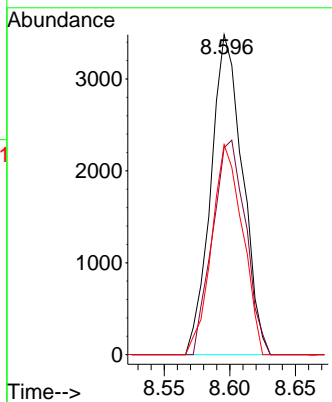
ClientSampleId :

SSTDICC020



Tgt Ion: 79 Resp: 5852

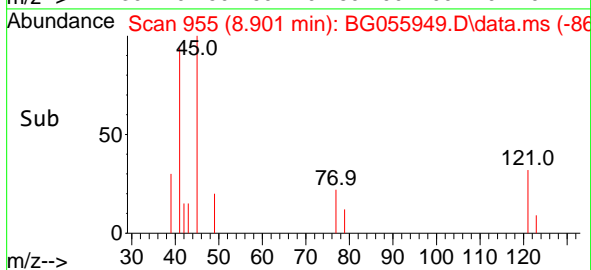
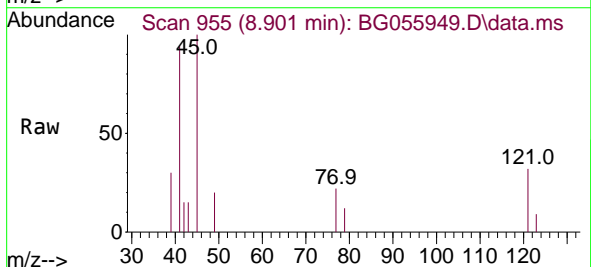
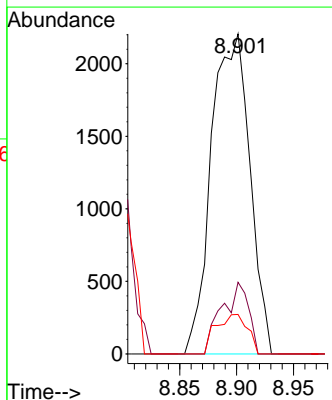
Ion	Ratio	Lower	Upper
79	100		
108	64.7	59.5	89.3
77	65.6	63.0	94.6

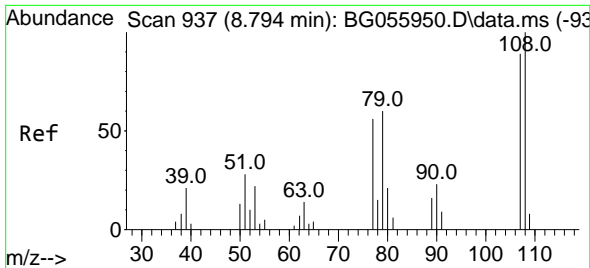


#16
 2,2'-oxybis(1-Chloropropane)
 Concen: 9.072 ng
 RT: 8.901 min Scan# 955
 Delta R.T. 0.008 min
 Lab File: BG055949.D
 Acq: 13 Dec 2022 19:15

Tgt Ion: 45 Resp: 5182

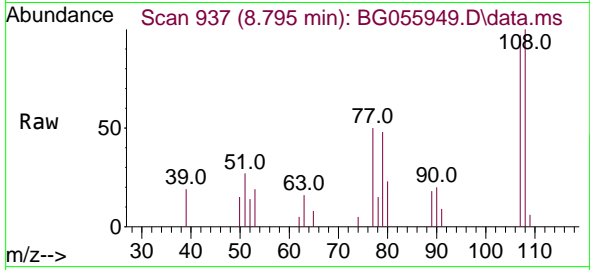
Ion	Ratio	Lower	Upper
45	100		
77	22.4	0.0	33.4
79	12.3	0.0	31.8





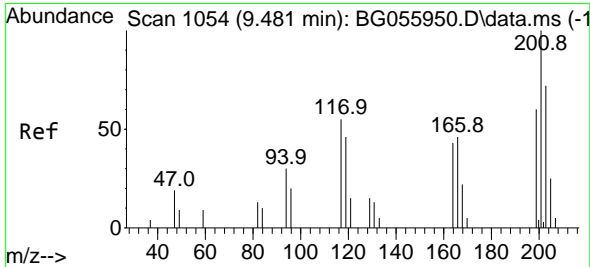
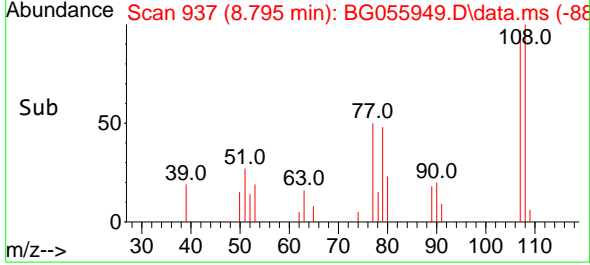
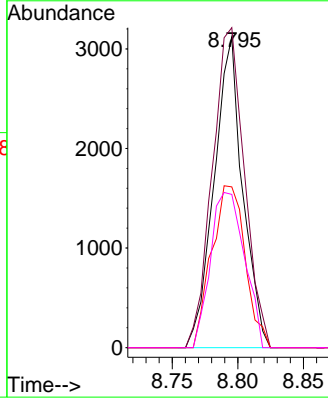
#17
 2-Methylphenol
 Concen: 16.178 ng
 RT: 8.795 min Scan# 91
 Delta R.T. 0.002 min
 Lab File: BG055949.D
 Acq: 13 Dec 2022 19:15

Instrument :
 BNA_G
 ClientSampleId :
 SSTDICC020



Tgt Ion:107 Resp: 4729

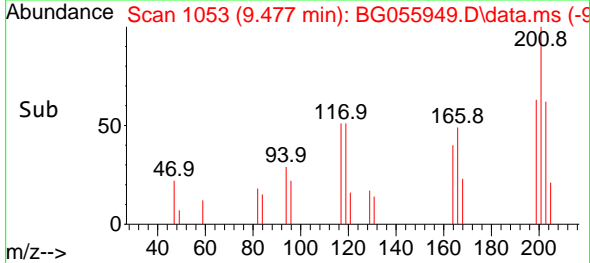
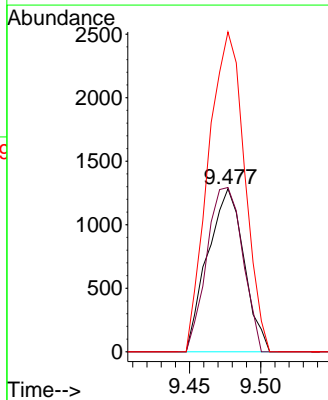
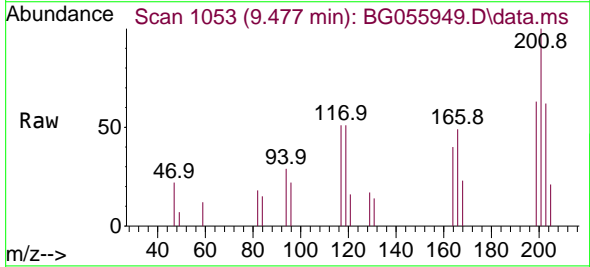
Ion	Ratio	Lower	Upper
107	100		
108	103.0	89.8	134.8
77	51.7	50.2	75.2
79	49.3	53.6	80.4

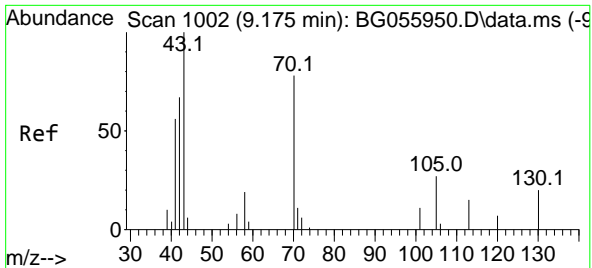


#18
 Hexachloroethane
 Concen: 17.665 ng
 RT: 9.477 min Scan# 1053
 Delta R.T. -0.004 min
 Lab File: BG055949.D
 Acq: 13 Dec 2022 19:15

Tgt Ion:117 Resp: 2281

Ion	Ratio	Lower	Upper
117	100		
119	100.7	66.8	100.2
201	196.1	144.6	217.0





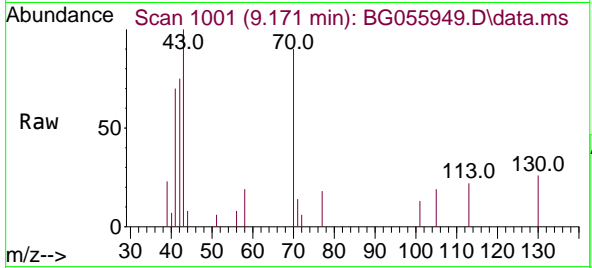
#19
 n-Nitroso-di-n-propylamine
 Concen: 14.753 ng
 RT: 9.171 min Scan# 1001
 Delta R.T. -0.004 min
 Lab File: BG055949.D
 Acq: 13 Dec 2022 19:15

Instrument :

BNA_G

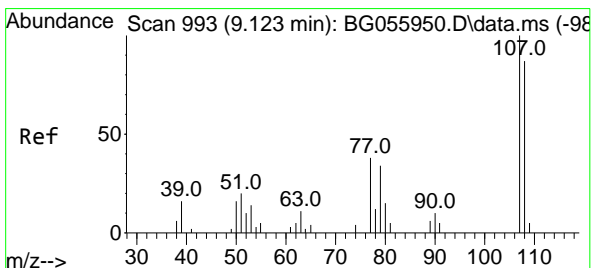
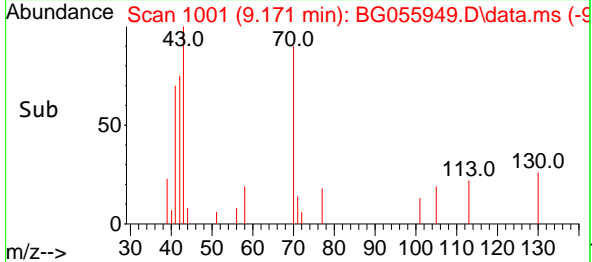
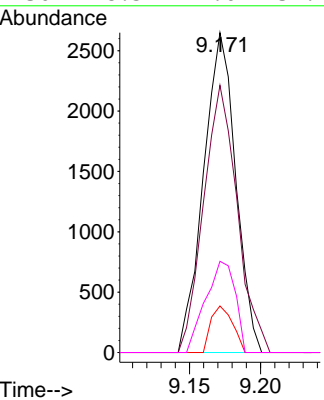
ClientSampleId :

SSTDICC020



Tgt Ion: 70 Resp: 4168

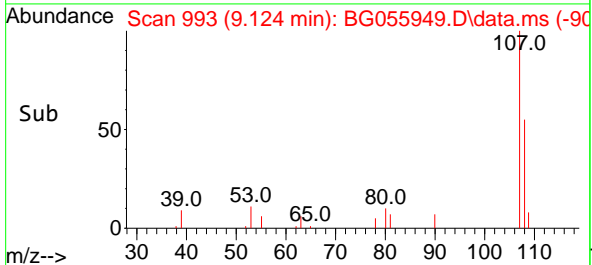
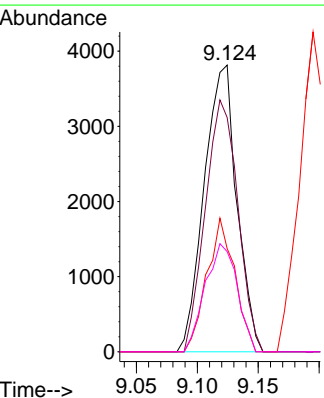
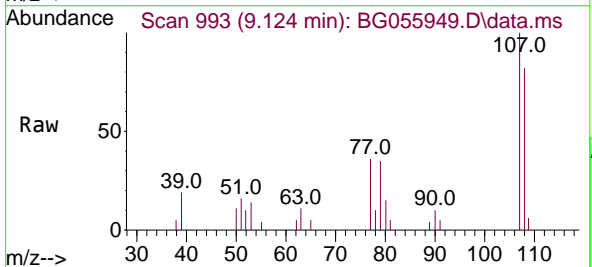
Ion	Ratio	Lower	Upper
70	100		
42	83.5	69.0	103.4
101	14.6	11.8	17.8
130	28.5	21.0	31.4

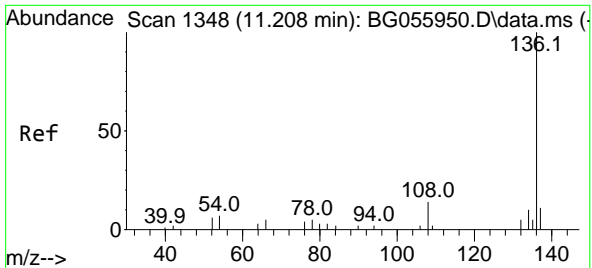


#20
 3+4-Methylphenols
 Concen: 17.385 ng
 RT: 9.124 min Scan# 993
 Delta R.T. 0.002 min
 Lab File: BG055949.D
 Acq: 13 Dec 2022 19:15

Tgt Ion: 107 Resp: 7099

Ion	Ratio	Lower	Upper
107	100		
108	81.7	67.0	107.0
77	36.0	18.3	58.3
79	34.9	13.5	53.5

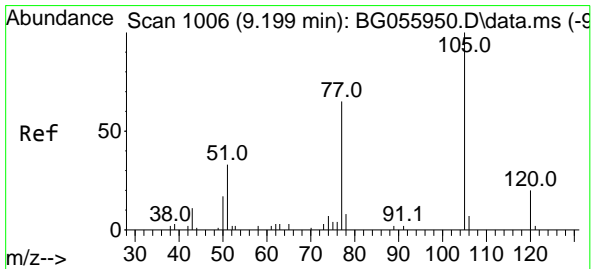
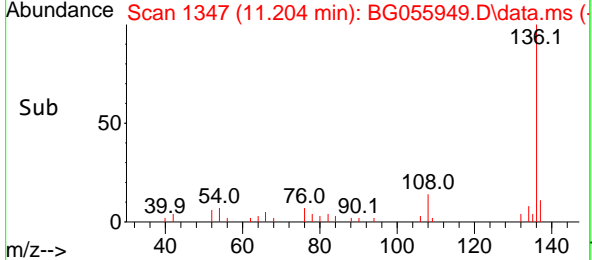
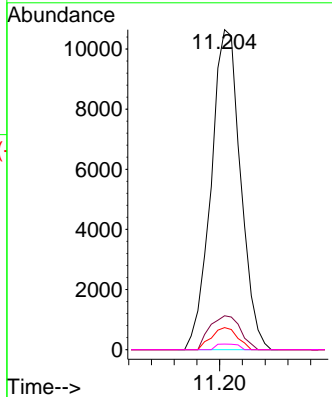
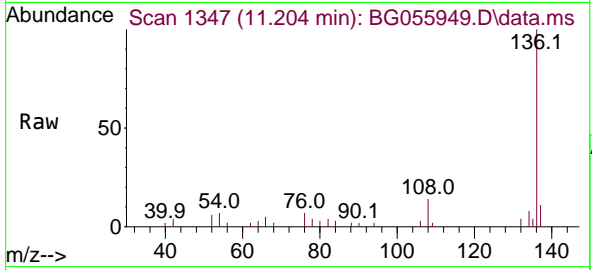




#21
 Naphthalene-d8
 Concen: 20.000 ng
 RT: 11.204 min Scan# 11
 Delta R.T. -0.004 min
 Lab File: BG055949.D
 Acq: 13 Dec 2022 19:15

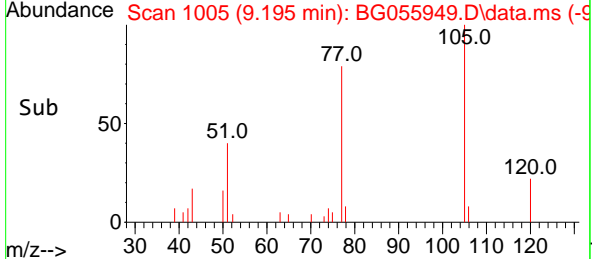
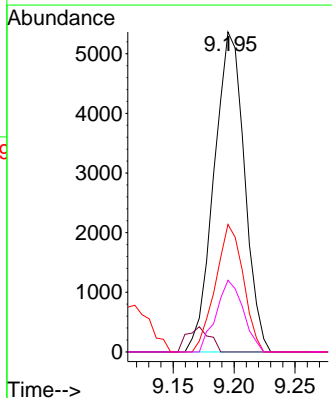
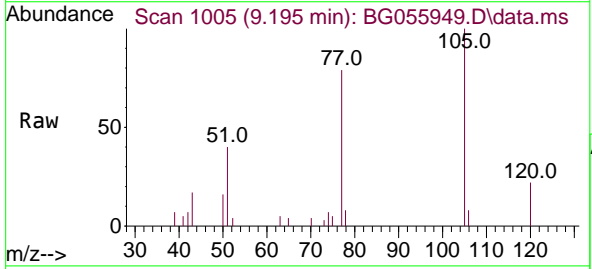
Instrument : BNA_G
 ClientSampleId : SSTDICC020

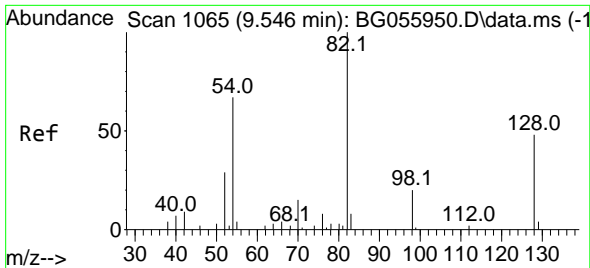
Tgt Ion	Resp	Lower	Upper
136	19161		
137	10.6	9.2	13.8
54	6.9	5.6	8.4
68	1.7	0.0	0.0



#22
 Acetophenone
 Concen: 18.721 ng
 RT: 9.195 min Scan# 1005
 Delta R.T. -0.004 min
 Lab File: BG055949.D
 Acq: 13 Dec 2022 19:15

Tgt Ion	Resp	Lower	Upper
105	9321		
71	0.0	0.0	0.0
51	39.8	26.7	40.1
120	22.4	16.4	24.6





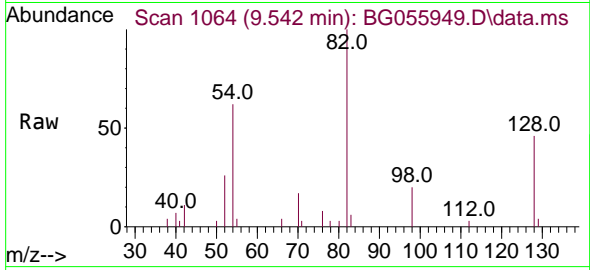
#23
 Nitrobenzene-d5
 Concen: 28.729 ng
 RT: 9.542 min Scan# 1064
 Delta R.T. -0.004 min
 Lab File: BG055949.D
 Acq: 13 Dec 2022 19:15

Instrument :

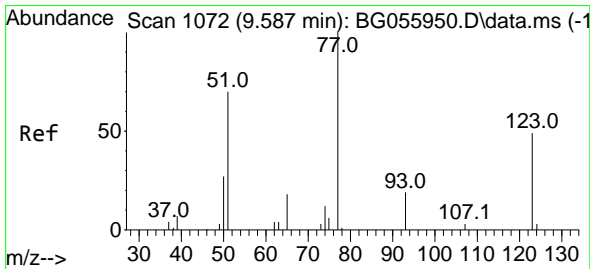
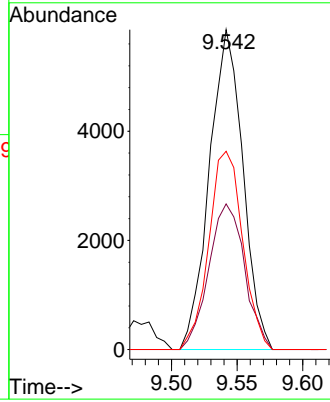
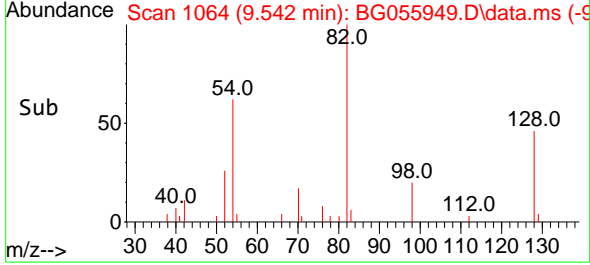
BNA_G

ClientSampleId :

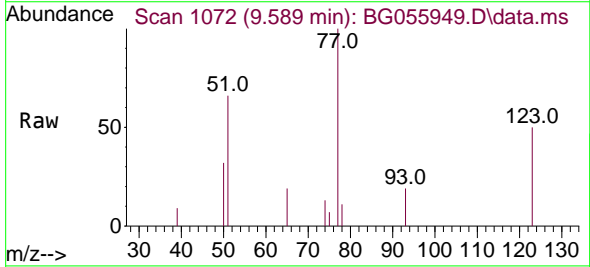
SSTDICC020



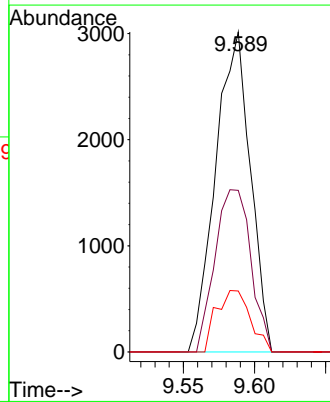
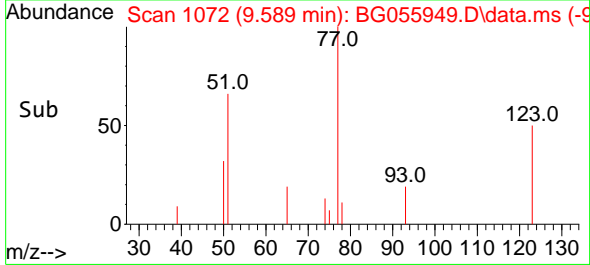
Tgt Ion: 82 Resp: 10415
 Ion Ratio Lower Upper
 82 100
 128 45.5 38.4 57.6
 54 62.0 53.3 79.9

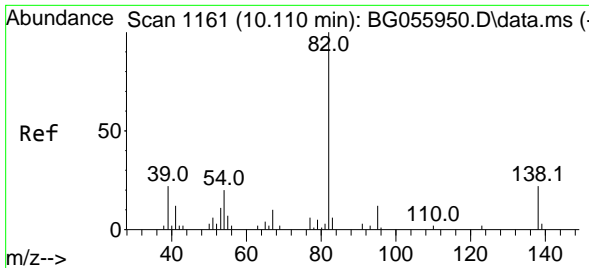


#24
 Nitrobenzene
 Concen: 13.519 ng
 RT: 9.589 min Scan# 1072
 Delta R.T. 0.002 min
 Lab File: BG055949.D
 Acq: 13 Dec 2022 19:15



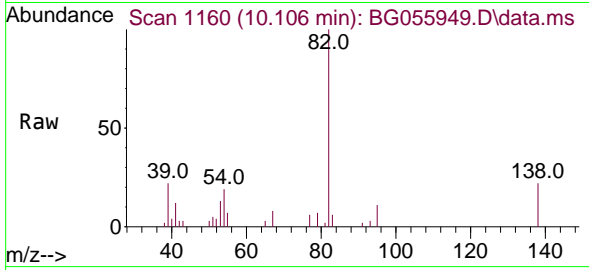
Tgt Ion: 77 Resp: 5119
 Ion Ratio Lower Upper
 77 100
 123 50.5 38.9 58.3
 65 19.0 14.7 22.1





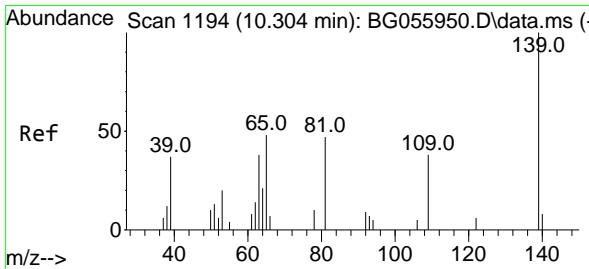
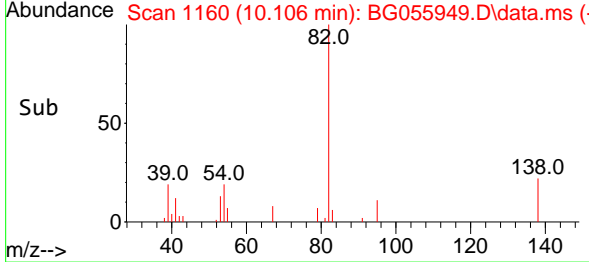
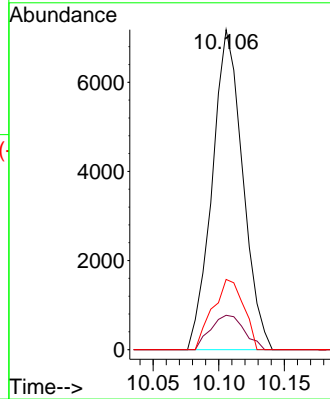
#25
 Isophorone
 Concen: 16.885 ng
 RT: 10.106 min Scan# 1160
 Delta R.T. -0.004 min
 Lab File: BG055949.D
 Acq: 13 Dec 2022 19:15

Instrument : BNA_G
 ClientSampleId : SSTDICC020



Tgt Ion: 82 Resp: 11598

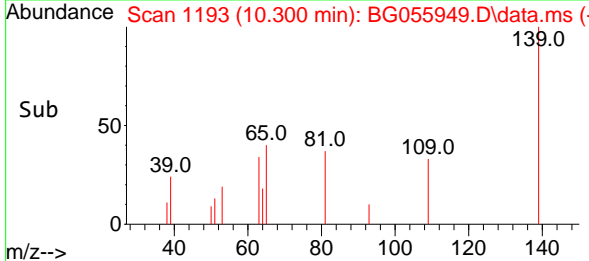
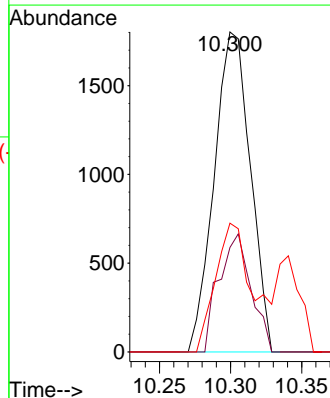
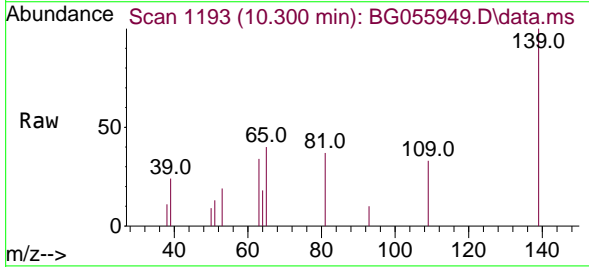
Ion	Ratio	Lower	Upper
82	100		
95	10.7	9.4	14.0
138	21.9	17.7	26.5

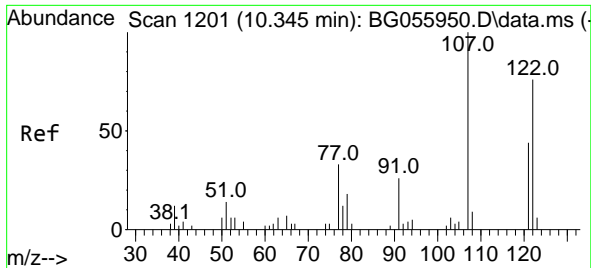


#26
 2-Nitrophenol
 Concen: 18.232 ng
 RT: 10.300 min Scan# 1193
 Delta R.T. -0.004 min
 Lab File: BG055949.D
 Acq: 13 Dec 2022 19:15

Tgt Ion: 139 Resp: 3187

Ion	Ratio	Lower	Upper
139	100		
109	32.6	30.7	46.1
65	40.2	38.8	58.2





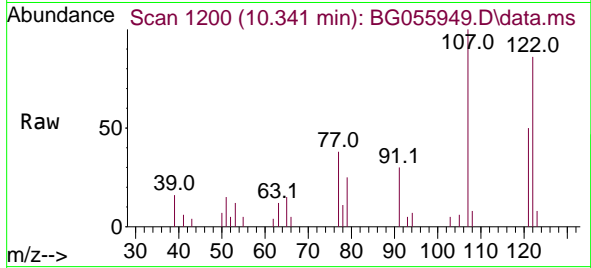
#27
 2,4-Dimethylphenol
 Concen: 20.839 ng
 RT: 10.341 min Scan# 11
 Delta R.T. -0.004 min
 Lab File: BG055949.D
 Acq: 13 Dec 2022 19:15

Instrument :

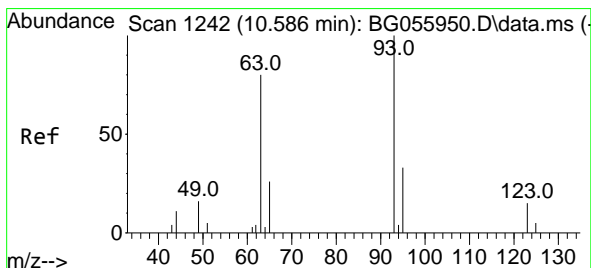
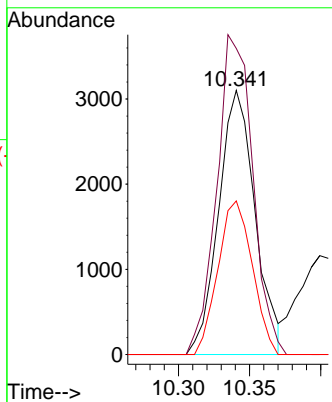
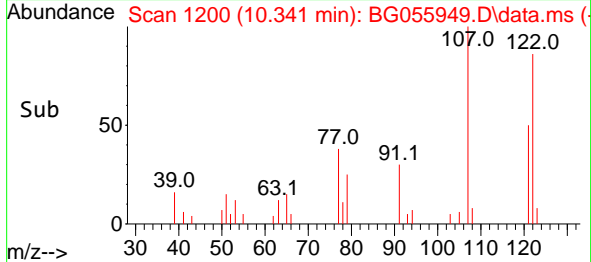
BNA_G

ClientSampleId :

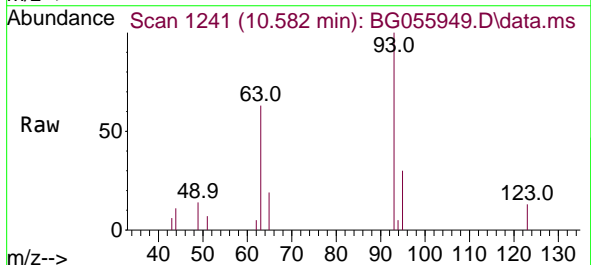
SSTDICC020



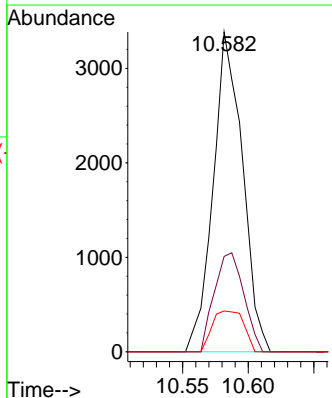
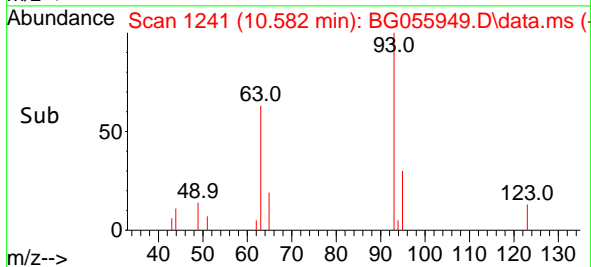
Tgt Ion:122 Resp: 5544
 Ion Ratio Lower Upper
 122 100
 107 115.9 105.9 158.9
 121 58.2 46.1 69.1

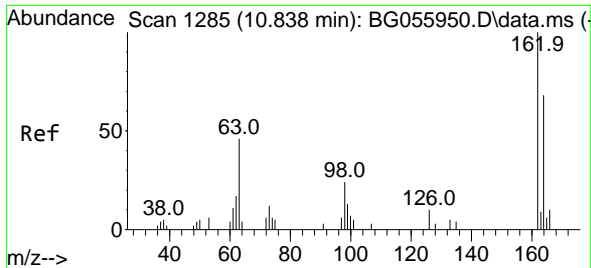


#28
 bis(2-Chloroethoxy)methane
 Concen: 14.248 ng
 RT: 10.582 min Scan# 1241
 Delta R.T. -0.004 min
 Lab File: BG055949.D
 Acq: 13 Dec 2022 19:15



Tgt Ion: 93 Resp: 5254
 Ion Ratio Lower Upper
 93 100
 95 29.8 26.3 39.5
 123 12.8 12.2 18.2





#29
 2,4-Dichlorophenol
 Concen: 23.829 ng
 RT: 10.828 min Scan# 11
 Delta R.T. -0.010 min
 Lab File: BG055949.D
 Acq: 13 Dec 2022 19:15

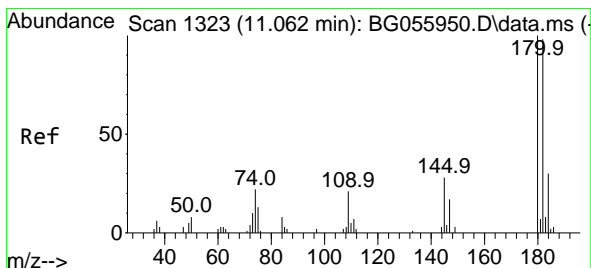
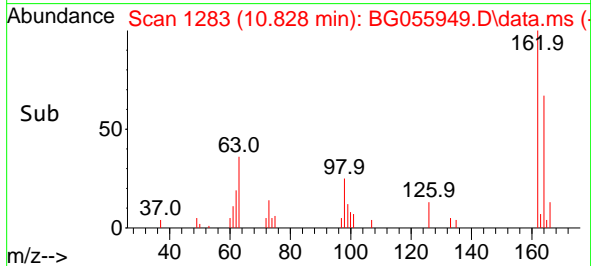
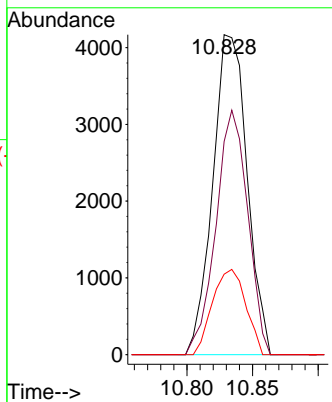
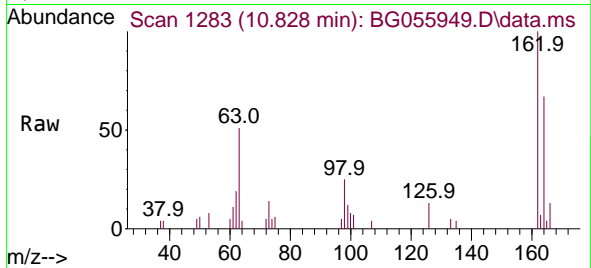
Instrument :

BNA_G

ClientSampleId :

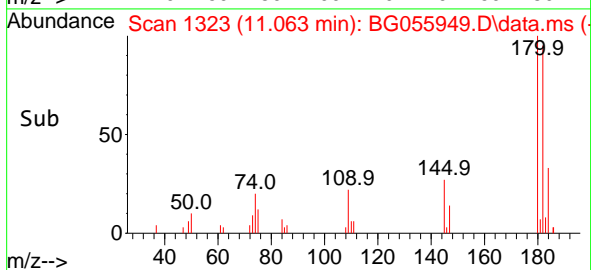
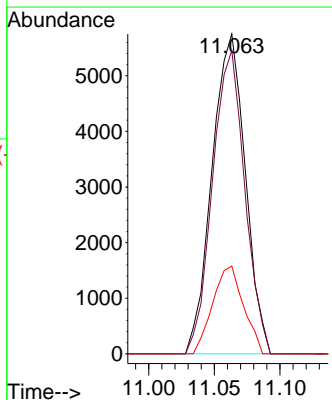
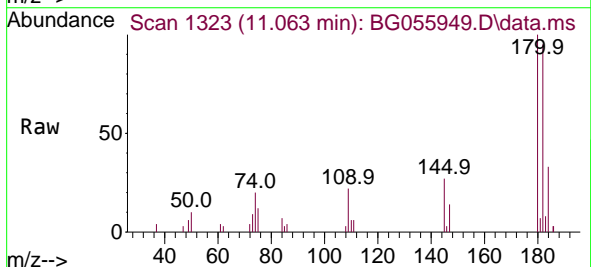
SSTDICC020

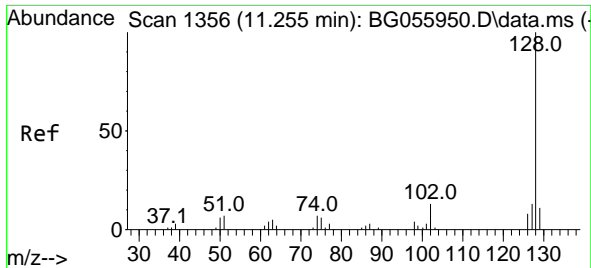
Tgt Ion:162 Resp: 7588
 Ion Ratio Lower Upper
 162 100
 164 66.6 47.5 87.5
 98 25.1 4.3 44.3



#30
 1,2,4-Trichlorobenzene
 Concen: 27.434 ng
 RT: 11.063 min Scan# 1323
 Delta R.T. 0.002 min
 Lab File: BG055949.D
 Acq: 13 Dec 2022 19:15

Tgt Ion:180 Resp: 10149
 Ion Ratio Lower Upper
 180 100
 182 94.8 78.1 117.1
 145 27.4 22.4 33.6





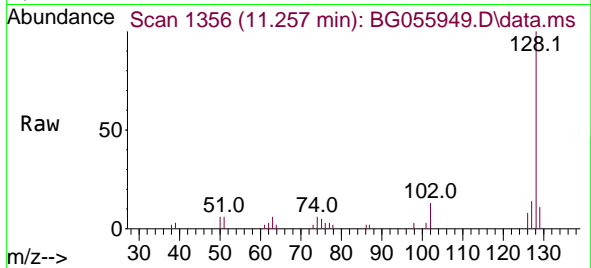
#31
 Naphthalene
 Concen: 19.369 ng
 RT: 11.257 min Scan# 1123
 Delta R.T. 0.002 min
 Lab File: BG055949.D
 Acq: 13 Dec 2022 19:15

Instrument :

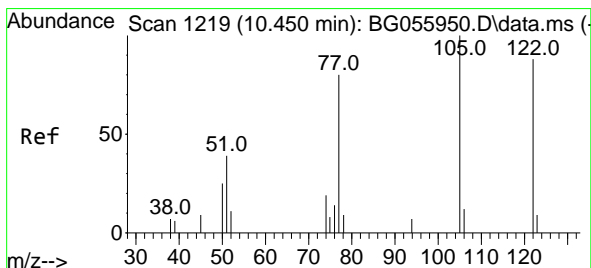
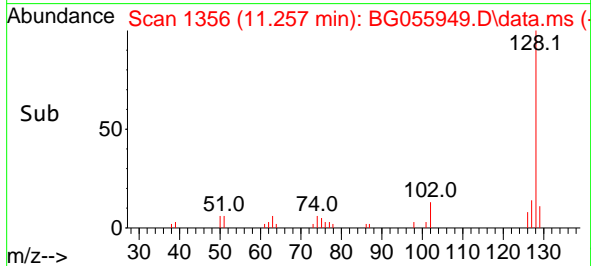
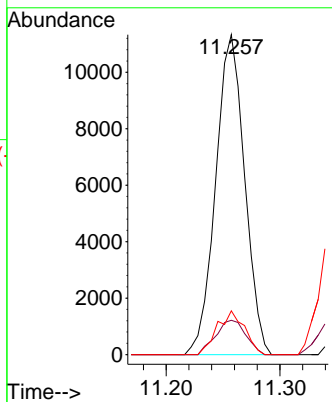
BNA_G

ClientSampleId :

SSTDICC020

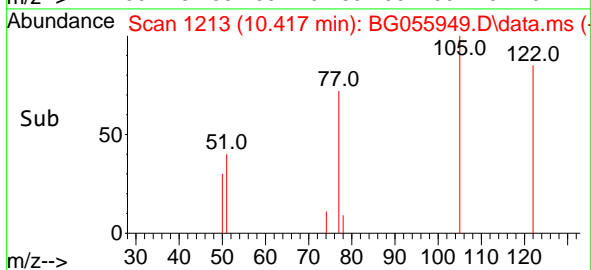
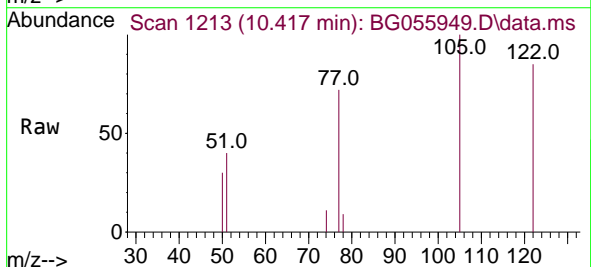
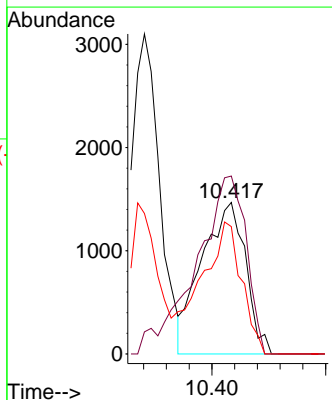


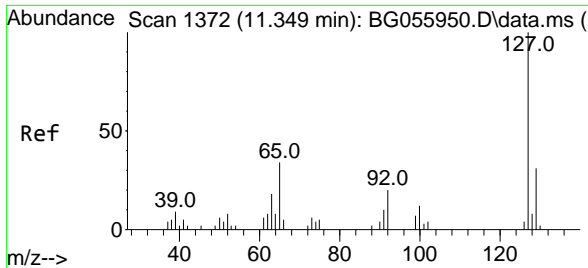
Tgt Ion:128 Resp: 20063
 Ion Ratio Lower Upper
 128 100
 129 10.7 8.7 13.1
 127 13.7 10.3 15.5



#32
 Benzoic acid
 Concen: 17.955 ng
 RT: 10.417 min Scan# 1213
 Delta R.T. -0.033 min
 Lab File: BG055949.D
 Acq: 13 Dec 2022 19:15

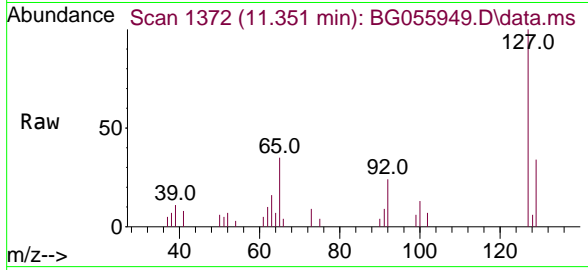
Tgt Ion:122 Resp: 3930
 Ion Ratio Lower Upper
 122 100
 105 117.5 90.6 130.6
 77 84.1 61.0 101.0





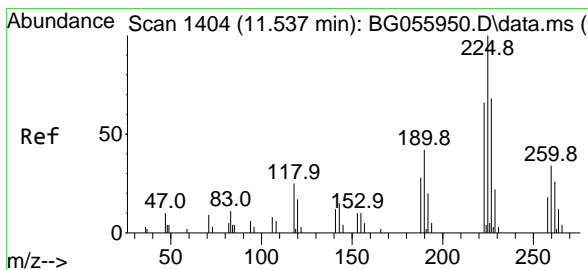
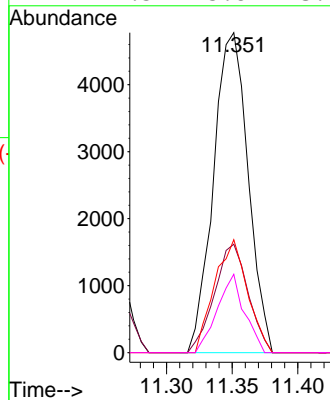
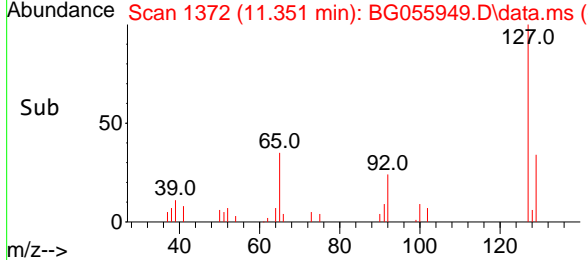
#33
 4-Chloroaniline
 Concen: 20.499 ng
 RT: 11.351 min Scan# 113
 Delta R.T. 0.002 min
 Lab File: BG055949.D
 Acq: 13 Dec 2022 19:15

Instrument :
 BNA_G
 ClientSampleId :
 SSTDICC020

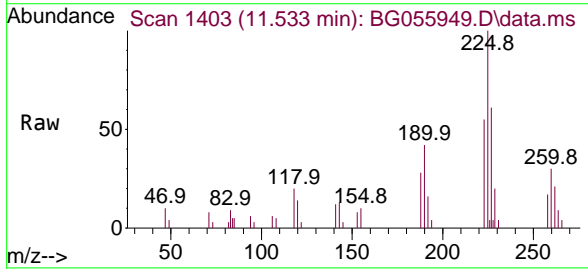


Tgt Ion:127 Resp: 8759

Ion	Ratio	Lower	Upper
127	100		
129	33.9	24.5	36.7
65	35.3	27.1	40.7
92	24.5	15.8	23.8

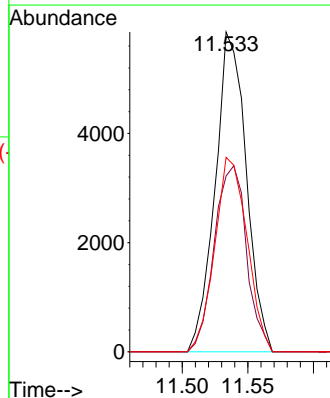
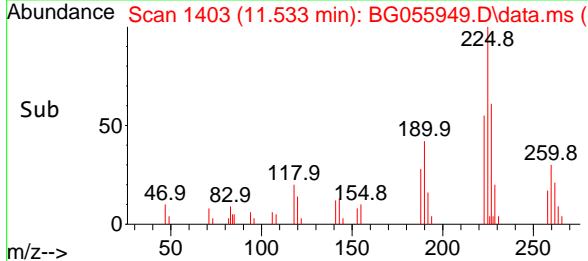


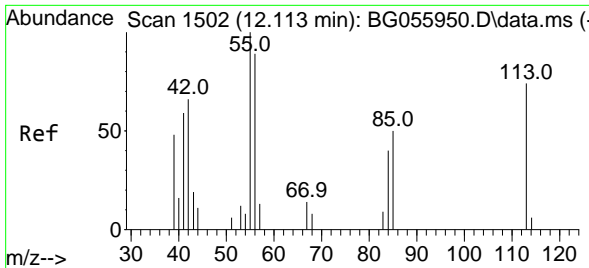
#34
 Hexachlorobutadiene
 Concen: 38.197 ng
 RT: 11.533 min Scan# 1403
 Delta R.T. -0.004 min
 Lab File: BG055949.D
 Acq: 13 Dec 2022 19:15



Tgt Ion:225 Resp: 9649

Ion	Ratio	Lower	Upper
225	100		
223	55.0	53.2	79.8
227	64.8	54.7	82.1



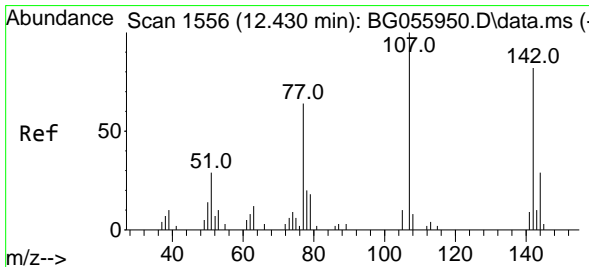
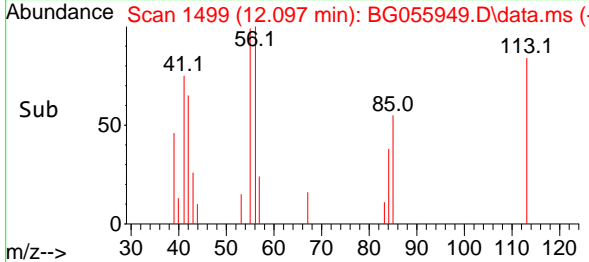
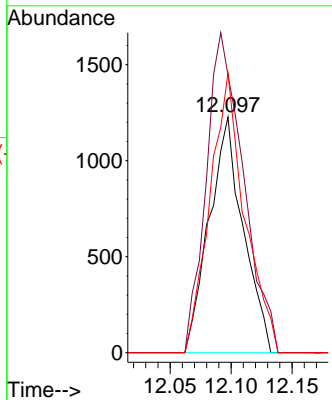
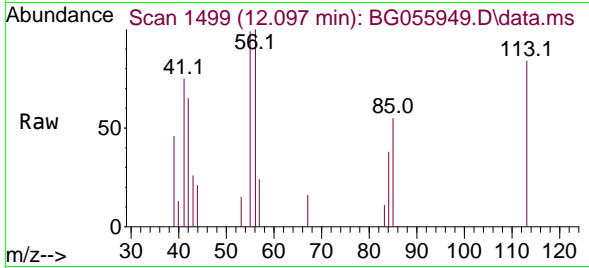


#35
 Caprolactam
 Concen: 21.571 ng
 RT: 12.097 min Scan# 14
 Delta R.T. -0.016 min
 Lab File: BG055949.D
 Acq: 13 Dec 2022 19:15

Instrument : BNA_G
 ClientSampleId : SSTDICC020

Tgt Ion:113 Resp: 2377

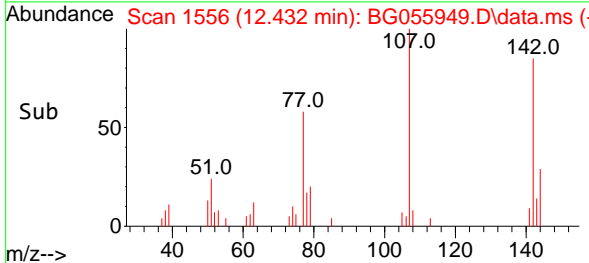
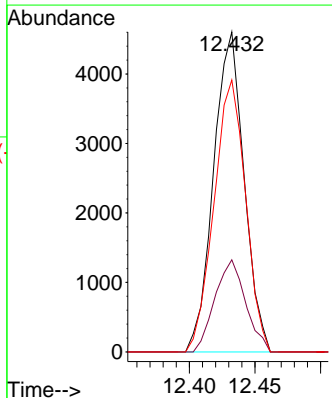
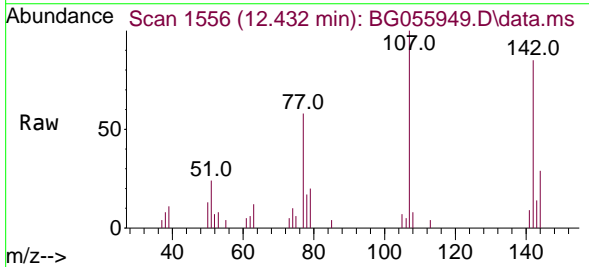
Ion	Ratio	Lower	Upper
113	100		
55	117.8	114.8	154.8
56	118.7	99.8	139.8

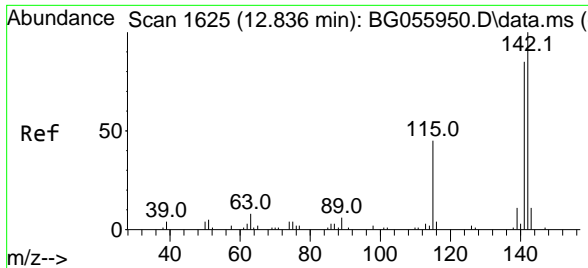


#36
 4-Chloro-3-methylphenol
 Concen: 21.258 ng
 RT: 12.432 min Scan# 1556
 Delta R.T. 0.002 min
 Lab File: BG055949.D
 Acq: 13 Dec 2022 19:15

Tgt Ion:107 Resp: 7440

Ion	Ratio	Lower	Upper
107	100		
144	28.8	23.3	34.9
142	85.0	65.6	98.4



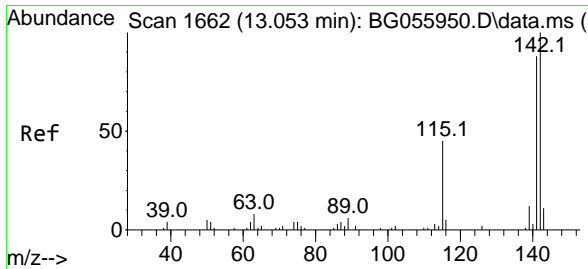
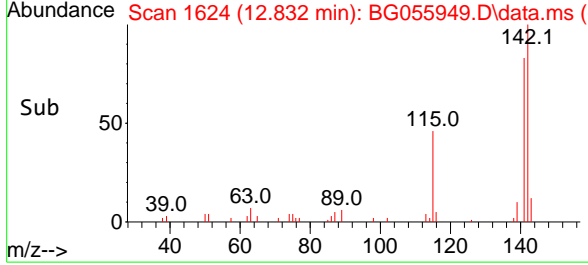
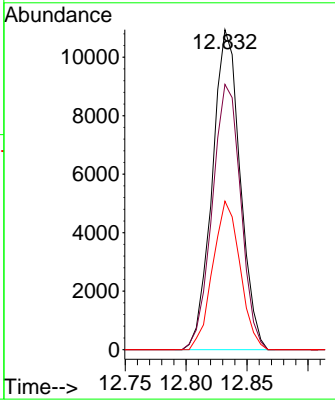
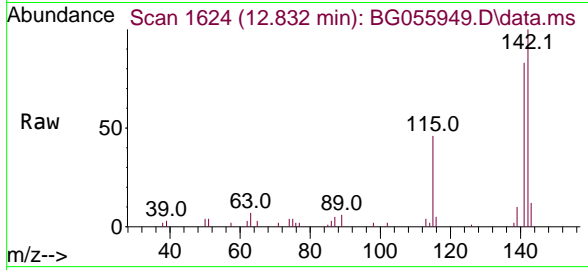


#37
 2-Methylnaphthalene
 Concen: 22.486 ng
 RT: 12.832 min Scan# 1624
 Delta R.T. -0.004 min
 Lab File: BG055949.D
 Acq: 13 Dec 2022 19:15

Instrument : BNA_G
 ClientSampleId : SSTDICC020

Tgt Ion:142 Resp: 17439

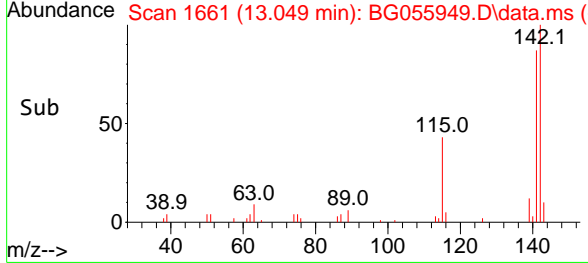
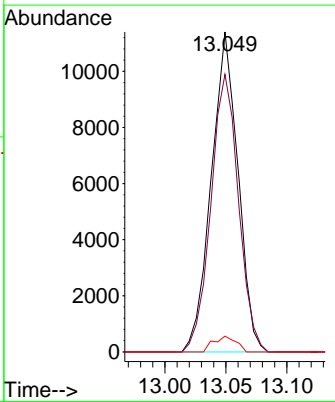
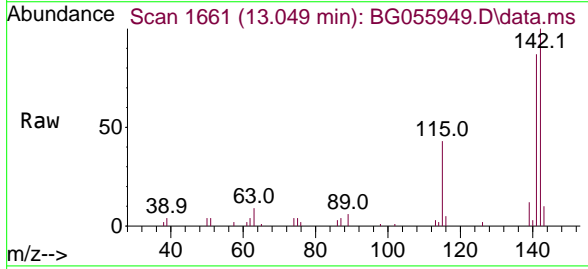
Ion	Ratio	Lower	Upper
142	100		
141	82.9	67.8	101.6
115	46.4	35.7	53.5

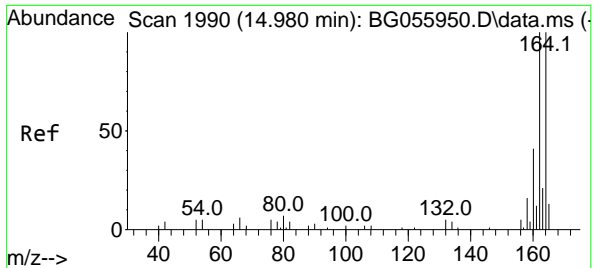


#38
 1-Methylnaphthalene
 Concen: 23.071 ng
 RT: 13.049 min Scan# 1661
 Delta R.T. -0.004 min
 Lab File: BG055949.D
 Acq: 13 Dec 2022 19:15

Tgt Ion:142 Resp: 17370

Ion	Ratio	Lower	Upper
142	100		
141	86.7	70.2	105.2
116	4.9	3.8	5.8



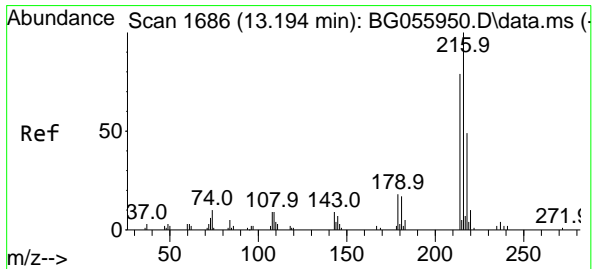
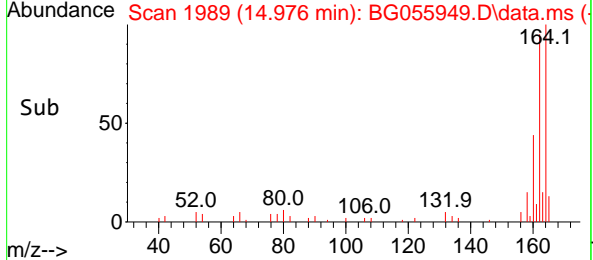
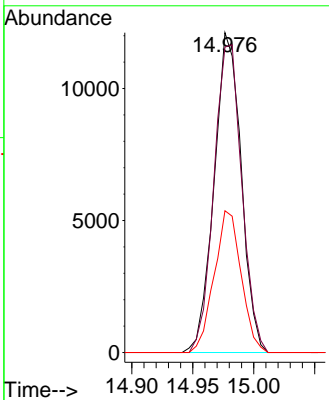
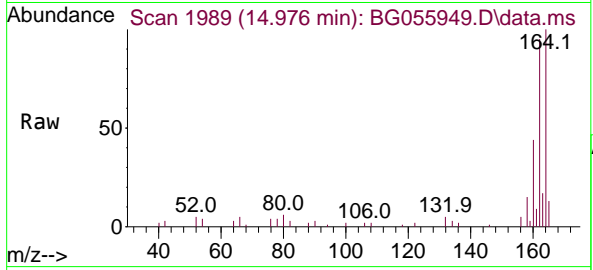


#39
 Acenaphthene-d10
 Concen: 20.000 ng
 RT: 14.976 min Scan# 1990
 Delta R.T. -0.004 min
 Lab File: BG055949.D
 Acq: 13 Dec 2022 19:15

Instrument : BNA_G
 ClientSampleId : SSTDICC020

Tgt Ion:164 Resp: 18662

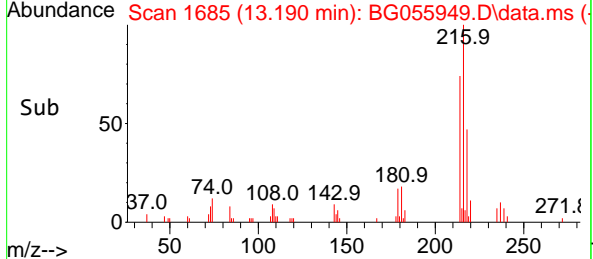
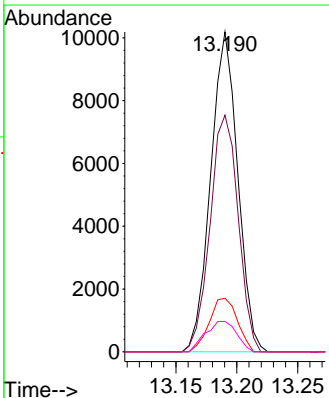
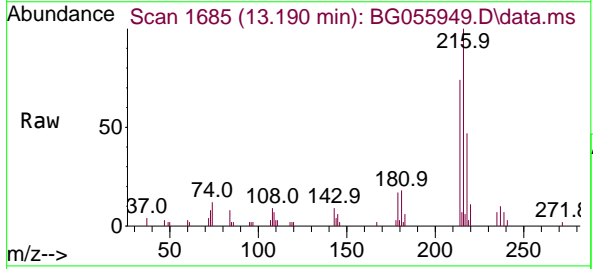
Ion	Ratio	Lower	Upper
164	100		
162	95.5	79.8	119.8
160	44.3	33.0	49.4

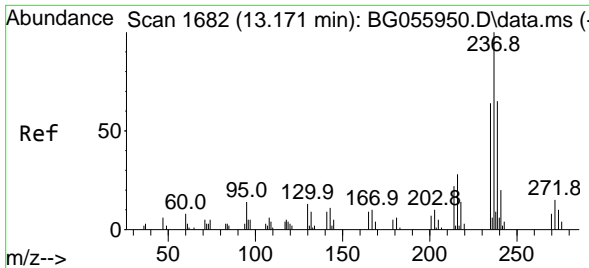


#40
 1,2,4,5-Tetrachlorobenzene
 Concen: 26.824 ng
 RT: 13.190 min Scan# 1685
 Delta R.T. -0.004 min
 Lab File: BG055949.D
 Acq: 13 Dec 2022 19:15

Tgt Ion:216 Resp: 15731

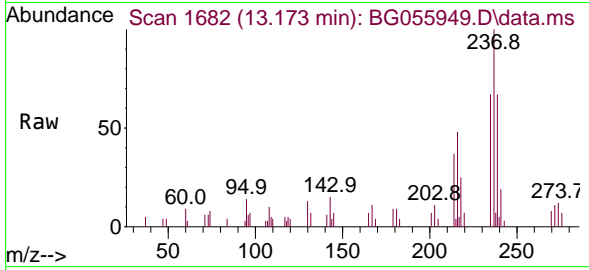
Ion	Ratio	Lower	Upper
216	100		
214	76.7	61.5	92.3
179	17.4	14.6	21.8
108	11.0	8.6	13.0





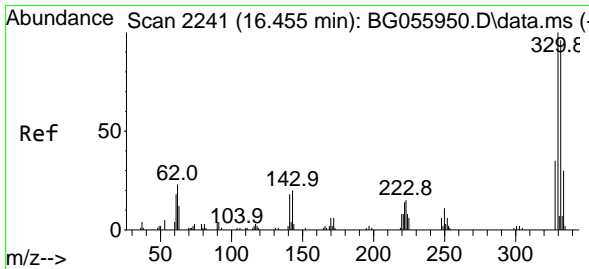
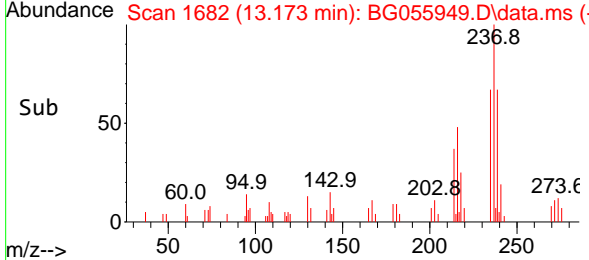
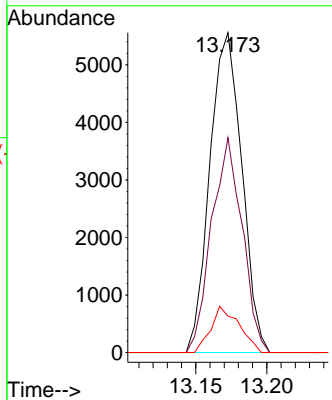
#41
 Hexachlorocyclopentadiene
 Concen: 29.413 ng
 RT: 13.173 min Scan# 1682
 Delta R.T. 0.002 min
 Lab File: BG055949.D
 Acq: 13 Dec 2022 19:15

Instrument :
 BNA_G
 ClientSampleId :
 SSTDICC020



Tgt Ion: 237 Resp: 8694

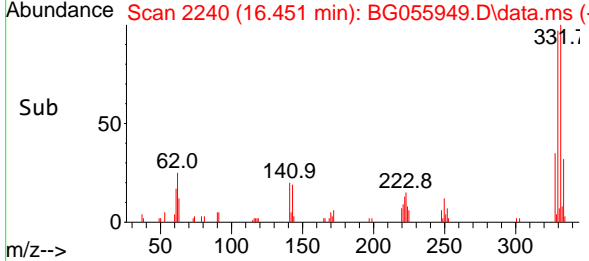
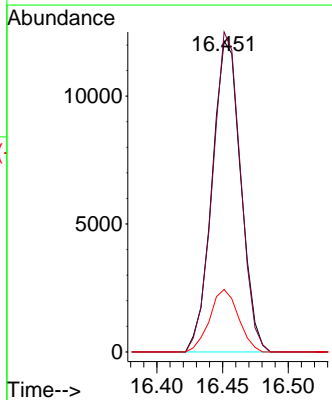
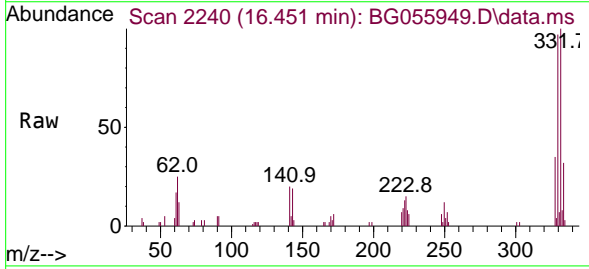
Ion	Ratio	Lower	Upper
237	100		
235	67.1	43.7	83.7
272	11.4	0.0	35.1

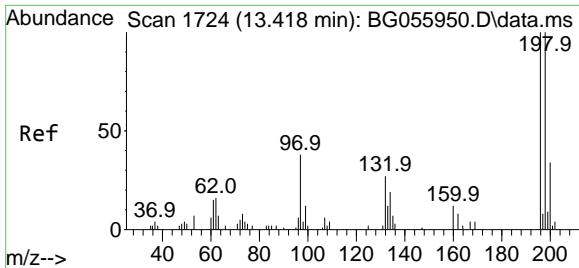


#42
 2,4,6-Tribromophenol
 Concen: 70.537 ng
 RT: 16.451 min Scan# 2240
 Delta R.T. -0.004 min
 Lab File: BG055949.D
 Acq: 13 Dec 2022 19:15

Tgt Ion: 330 Resp: 18536

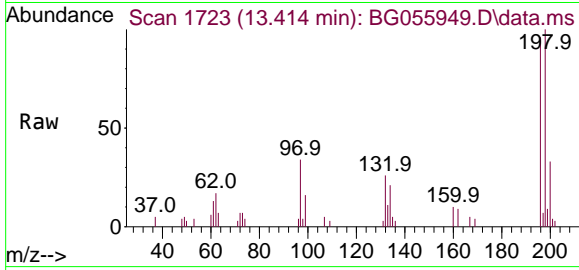
Ion	Ratio	Lower	Upper
330	100		
332	99.8	76.6	114.8
141	20.0	15.0	22.4



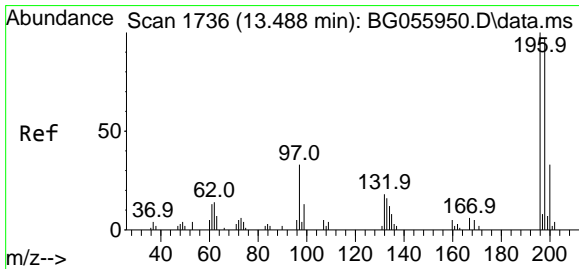
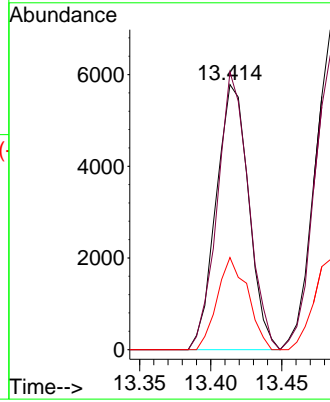
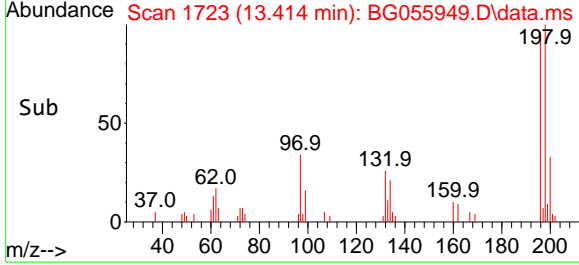


#43
 2,4,6-Trichlorophenol
 Concen: 23.077 ng
 RT: 13.414 min Scan# 1723
 Delta R.T. -0.004 min
 Lab File: BG055949.D
 Acq: 13 Dec 2022 19:15

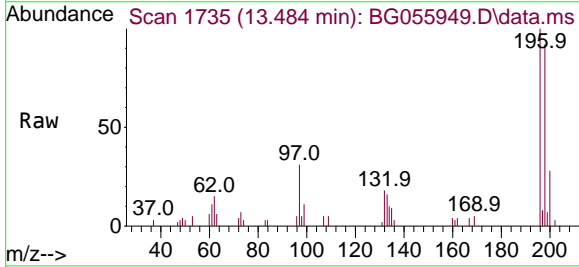
Instrument : BNA_G
 ClientSampleId : SSTDICC020



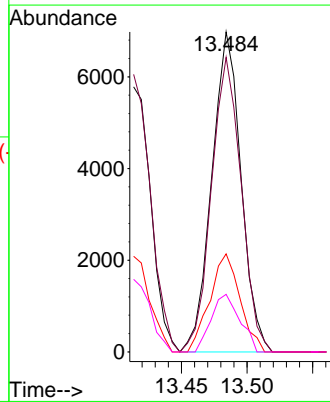
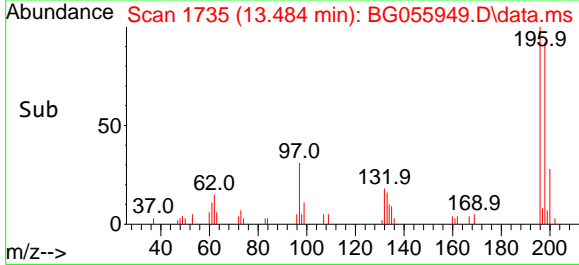
Tgt Ion:196 Resp: 9232
 Ion Ratio Lower Upper
 196 100
 198 104.7 80.2 120.4
 200 34.8 27.6 41.4

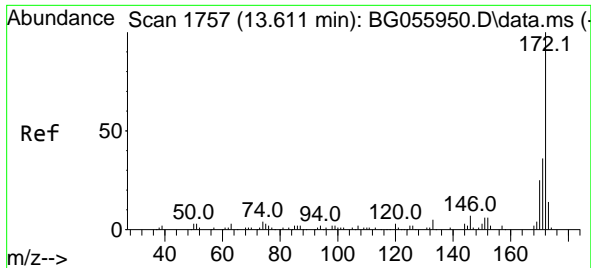


#44
 2,4,5-Trichlorophenol
 Concen: 24.644 ng
 RT: 13.484 min Scan# 1735
 Delta R.T. -0.004 min
 Lab File: BG055949.D
 Acq: 13 Dec 2022 19:15



Tgt Ion:196 Resp: 10834
 Ion Ratio Lower Upper
 196 100
 198 92.0 78.0 117.0
 97 30.6 26.0 39.0
 132 18.0 14.5 21.7





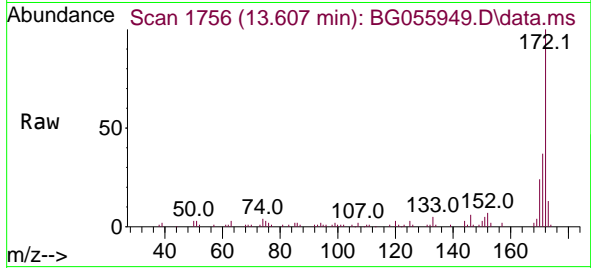
#45
 2-Fluorobiphenyl
 Concen: 43.557 ng
 RT: 13.607 min Scan# 1756
 Delta R.T. -0.004 min
 Lab File: BG055949.D
 Acq: 13 Dec 2022 19:15

Instrument :

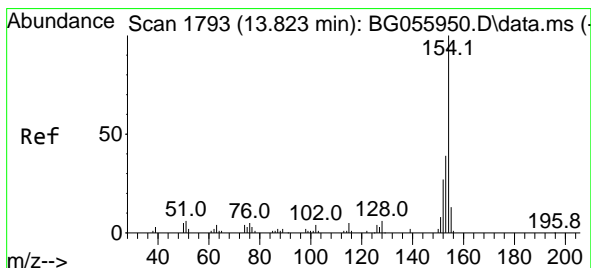
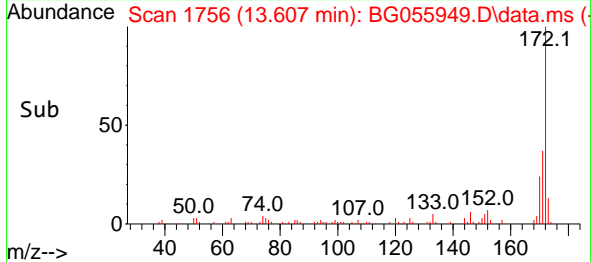
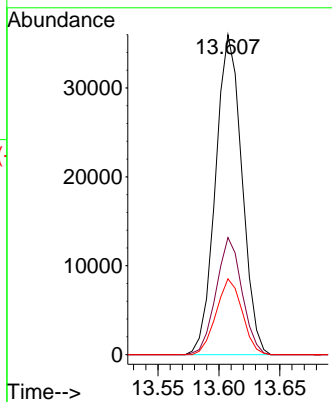
BNA_G

ClientSampleId :

SSTDICC020

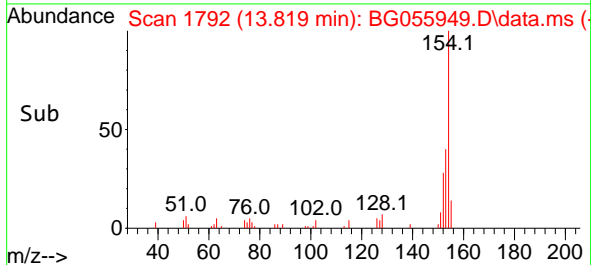
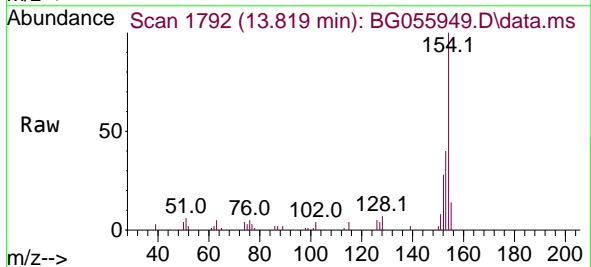
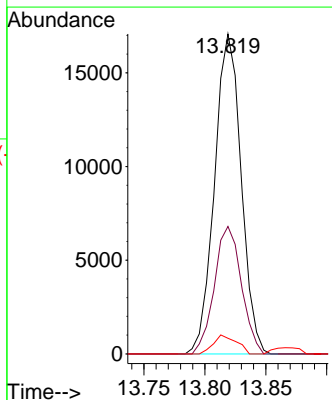


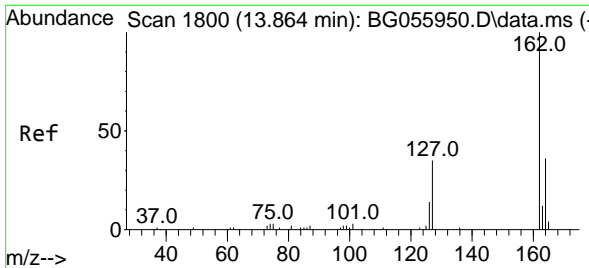
Tgt Ion:172 Resp: 54259
 Ion Ratio Lower Upper
 172 100
 171 36.6 28.6 42.8
 170 23.7 19.9 29.9



#46
 1,1'-Biphenyl
 Concen: 19.057 ng
 RT: 13.819 min Scan# 1792
 Delta R.T. -0.004 min
 Lab File: BG055949.D
 Acq: 13 Dec 2022 19:15

Tgt Ion:154 Resp: 25916
 Ion Ratio Lower Upper
 154 100
 153 39.8 19.5 59.5
 76 4.9 0.0 25.5



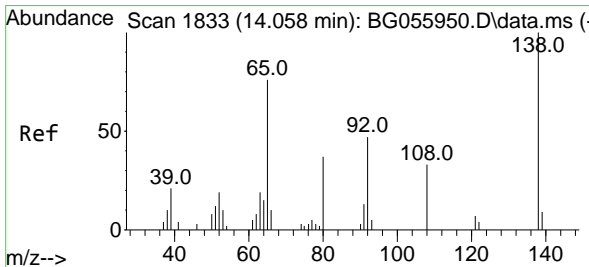
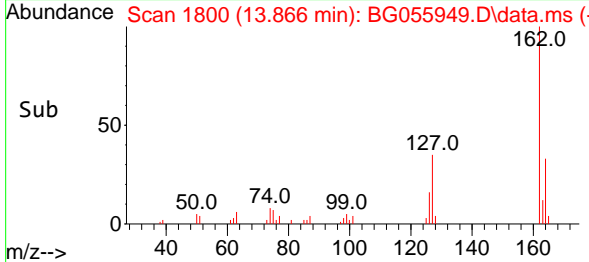
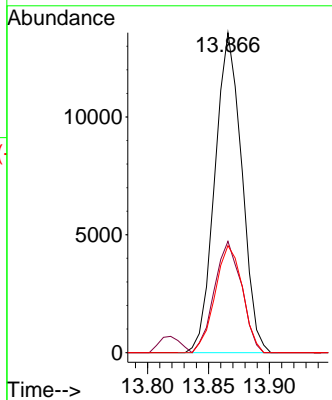
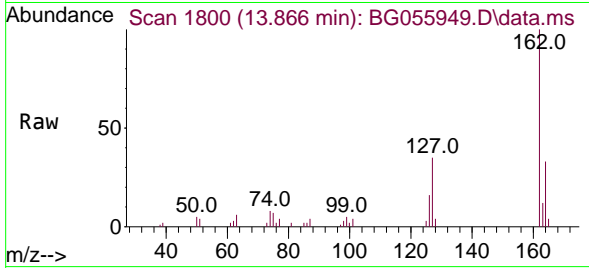


#47
 2-Chloronaphthalene
 Concen: 19.697 ng
 RT: 13.866 min Scan# 1800
 Delta R.T. 0.002 min
 Lab File: BG055949.D
 Acq: 13 Dec 2022 19:15

Instrument : BNA_G
 ClientSampleId : SSTDICC020

Tgt Ion:162 Resp: 20820

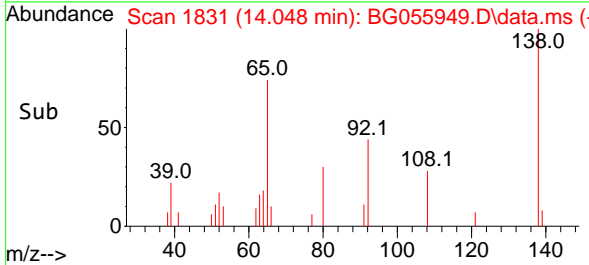
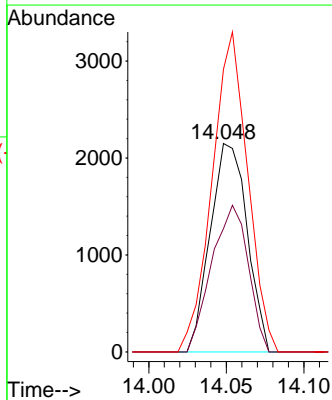
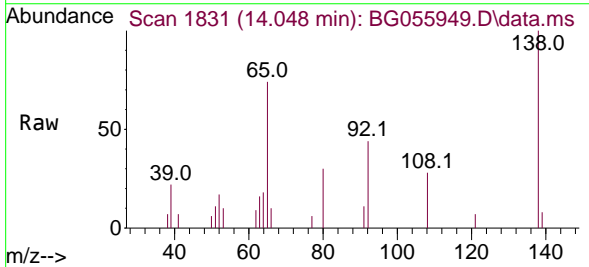
Ion	Ratio	Lower	Upper
162	100		
127	34.8	31.0	46.4
164	33.4	28.6	42.8

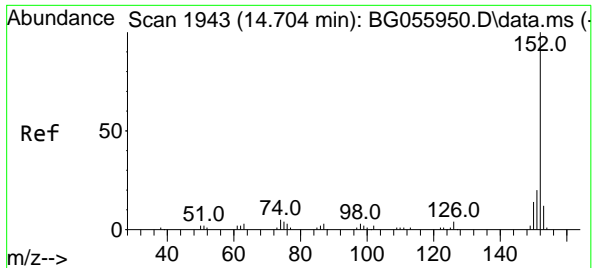


#48
 2-Nitroaniline
 Concen: 10.261 ng
 RT: 14.048 min Scan# 1831
 Delta R.T. -0.010 min
 Lab File: BG055949.D
 Acq: 13 Dec 2022 19:15

Tgt Ion: 65 Resp: 3566

Ion	Ratio	Lower	Upper
65	100		
92	59.1	49.7	74.5
138	135.6	105.0	157.6



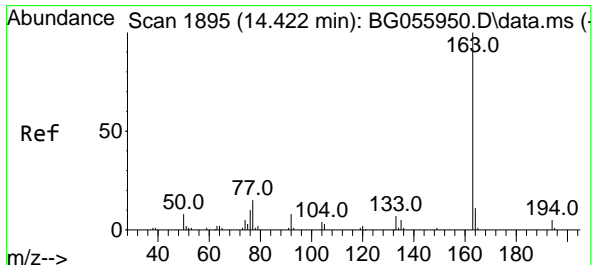
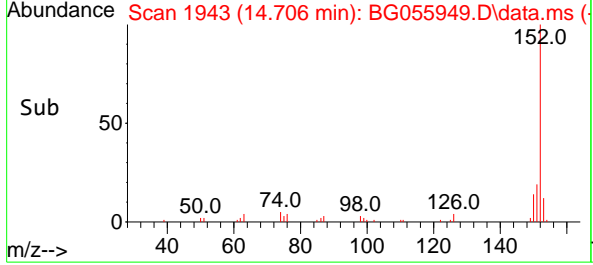
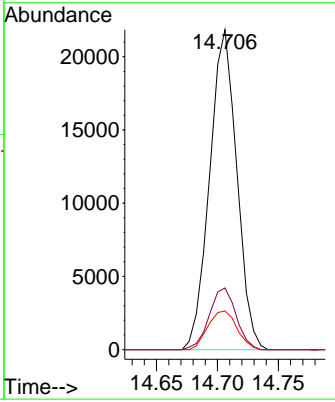
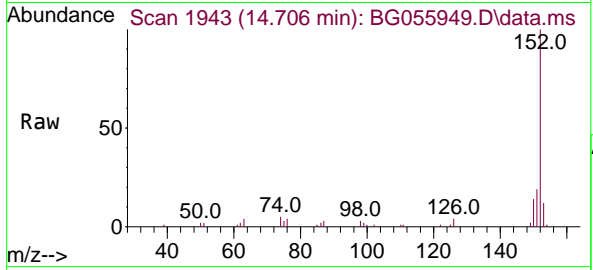


#49
 Acenaphthylene
 Concen: 19.401 ng
 RT: 14.706 min Scan# 1943
 Delta R.T. 0.002 min
 Lab File: BG055949.D
 Acq: 13 Dec 2022 19:15

Instrument : BNA_G
 ClientSampleId : SSTDICC020

Tgt Ion:152 Resp: 33770

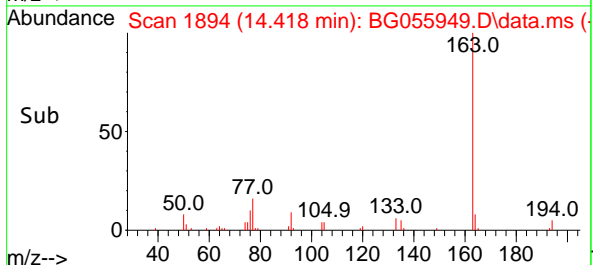
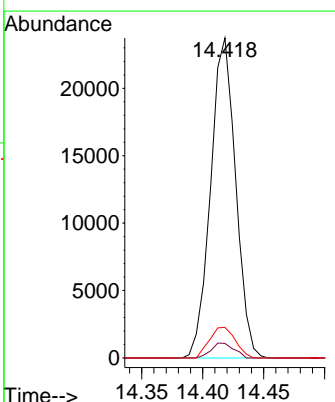
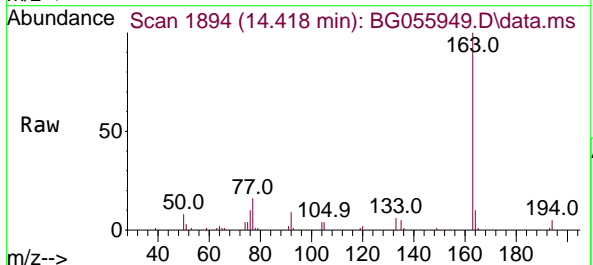
Ion	Ratio	Lower	Upper
152	100		
151	19.3	15.8	23.8
153	12.1	10.0	15.0

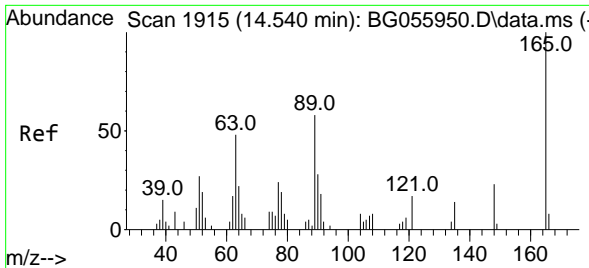


#50
 Dimethylphthalate
 Concen: 22.787 ng
 RT: 14.418 min Scan# 1894
 Delta R.T. -0.004 min
 Lab File: BG055949.D
 Acq: 13 Dec 2022 19:15

Tgt Ion:163 Resp: 33900

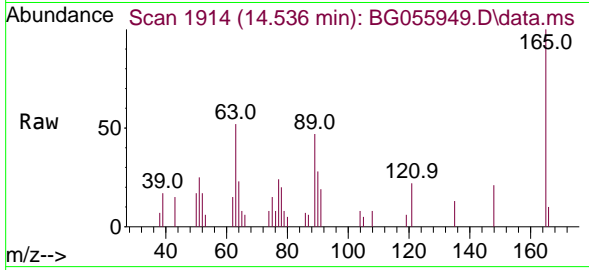
Ion	Ratio	Lower	Upper
163	100		
194	4.5	3.8	5.6
164	9.5	8.6	13.0





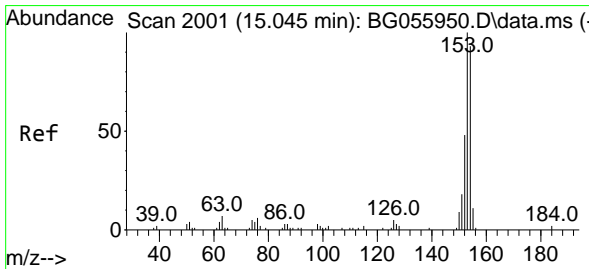
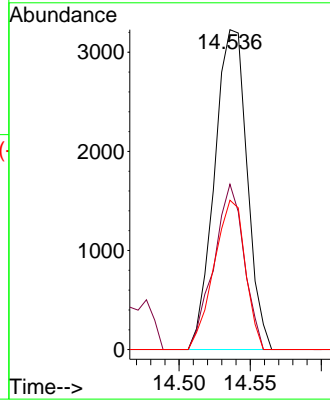
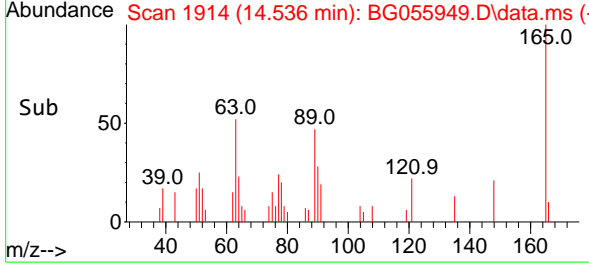
#51
 2,6-Dinitrotoluene
 Concen: 16.967 ng
 RT: 14.536 min Scan# 1915
 Delta R.T. -0.004 min
 Lab File: BG055949.D
 Acq: 13 Dec 2022 19:15

Instrument :
 BNA_G
 ClientSampleId :
 SSTDICC020

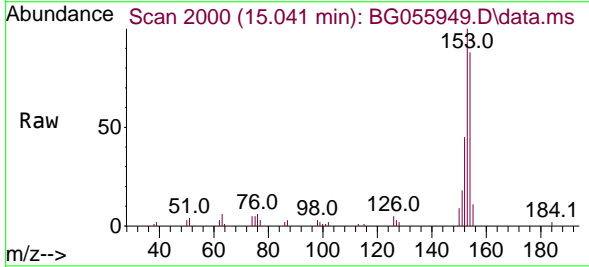


Tgt Ion:165 Resp: 5161

Ion	Ratio	Lower	Upper
165	100		
63	51.7	38.3	57.5
89	46.7	46.3	69.5

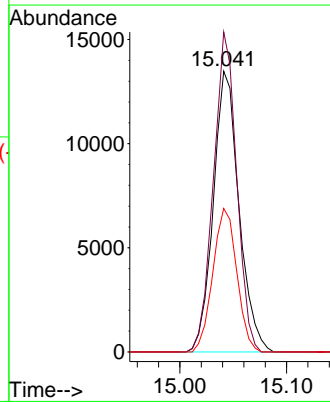
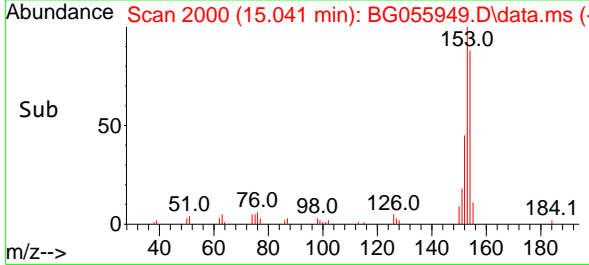


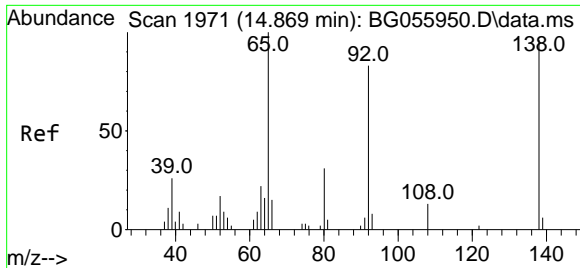
#52
 Acenaphthene
 Concen: 19.820 ng
 RT: 15.041 min Scan# 2000
 Delta R.T. -0.004 min
 Lab File: BG055949.D
 Acq: 13 Dec 2022 19:15



Tgt Ion:154 Resp: 22547

Ion	Ratio	Lower	Upper
154	100		
153	114.0	86.2	129.2
152	51.1	41.4	62.0

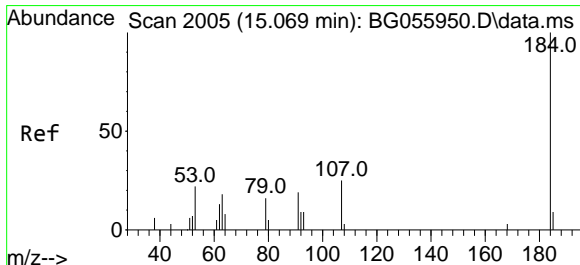
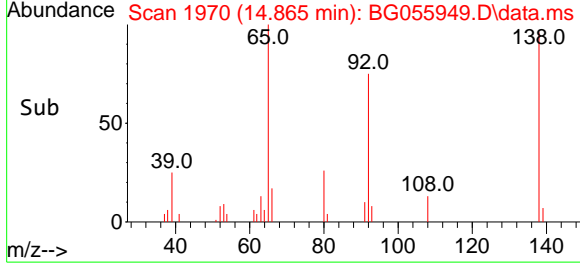
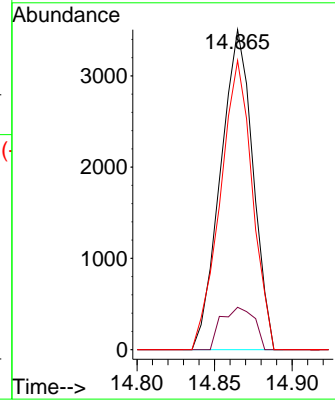
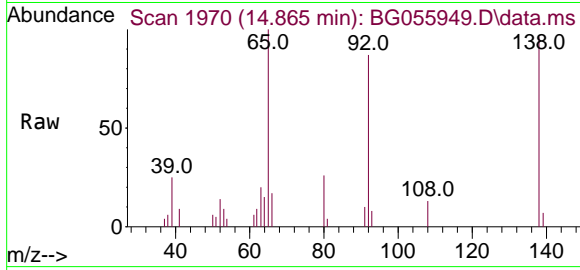




#53
 3-Nitroaniline
 Concen: 15.297 ng
 RT: 14.865 min Scan# 1970
 Delta R.T. -0.004 min
 Lab File: BG055949.D
 Acq: 13 Dec 2022 19:15

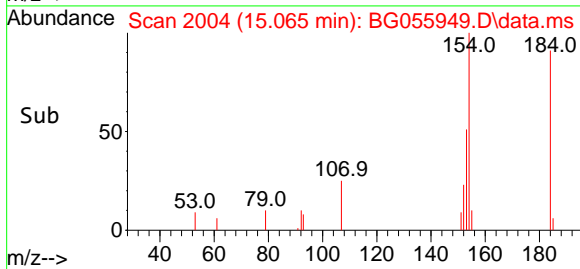
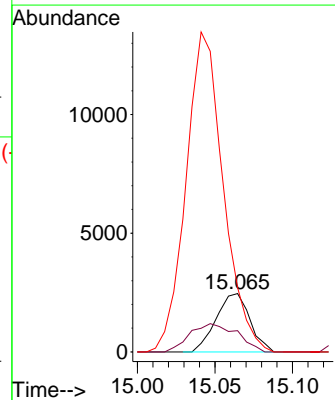
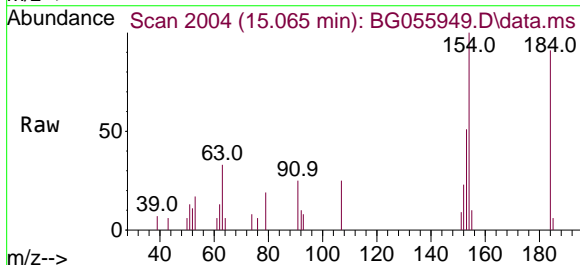
Instrument : BNA_G
 ClientSampleId : SSTDICC020

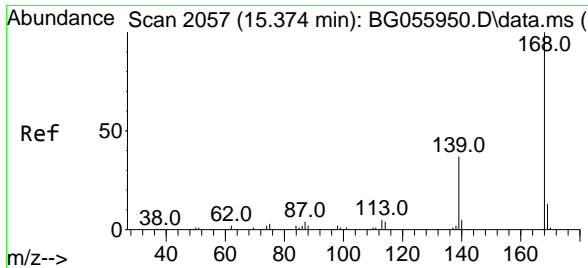
Tgt Ion	Resp	Lower	Upper
138	5108		
108	13.2	10.9	16.3
92	90.3	69.4	104.0



#54
 2,4-Dinitrophenol
 Concen: 21.242 ng
 RT: 15.065 min Scan# 2004
 Delta R.T. -0.004 min
 Lab File: BG055949.D
 Acq: 13 Dec 2022 19:15

Tgt Ion	Resp	Lower	Upper
184	3715		
154	110.0	67.0	100.4#
63	36.2	23.0	34.4#



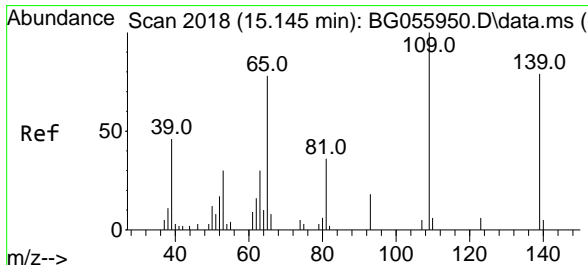
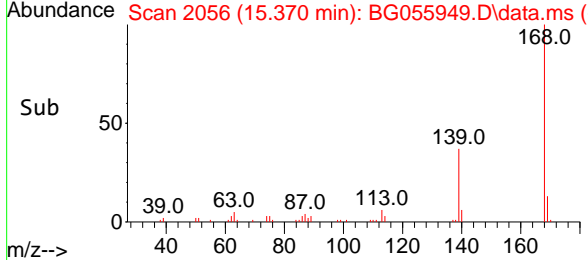
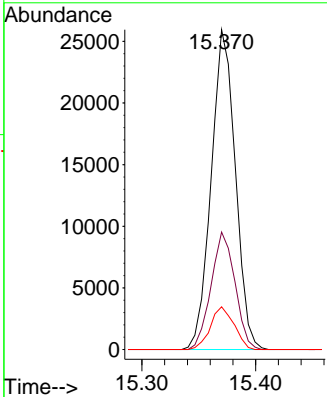
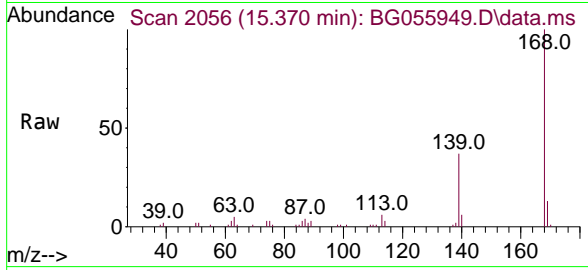


#55
 Dibenzofuran
 Concen: 21.781 ng
 RT: 15.370 min Scan# 2057
 Delta R.T. -0.004 min
 Lab File: BG055949.D
 Acq: 13 Dec 2022 19:15

Instrument : BNA_G
 ClientSampleId : SSTDICC020

Tgt Ion:168 Resp: 38225

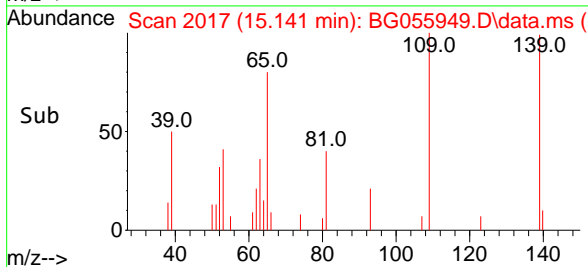
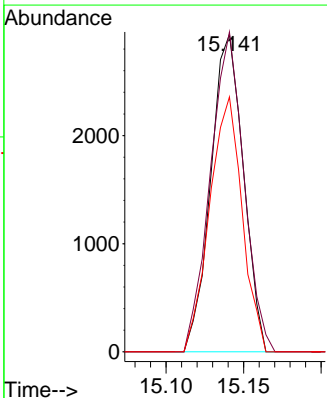
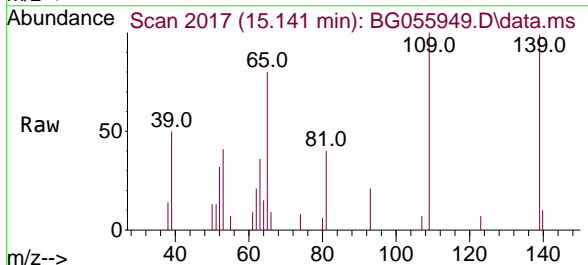
Ion	Ratio	Lower	Upper
168	100		
139	36.7	29.8	44.8
169	13.4	10.6	16.0

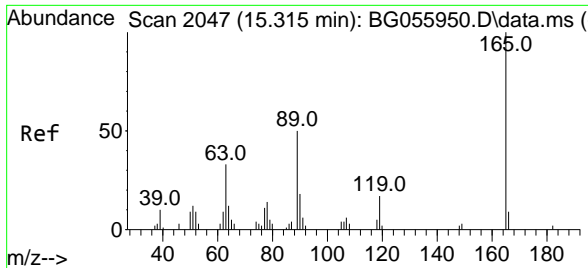


#56
 4-Nitrophenol
 Concen: 16.388 ng
 RT: 15.141 min Scan# 2017
 Delta R.T. -0.004 min
 Lab File: BG055949.D
 Acq: 13 Dec 2022 19:15

Tgt Ion:139 Resp: 4295

Ion	Ratio	Lower	Upper
139	100		
109	100.8	106.7	146.7#
65	80.3	79.2	119.2

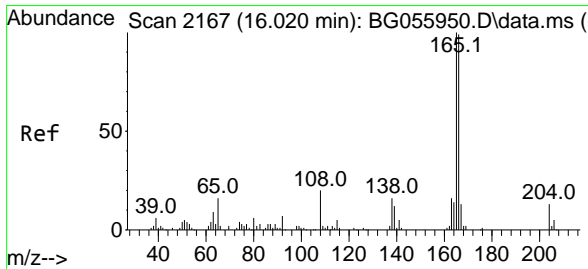
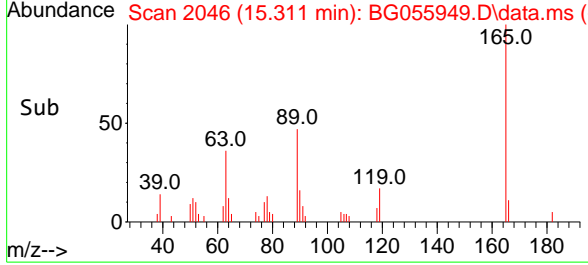
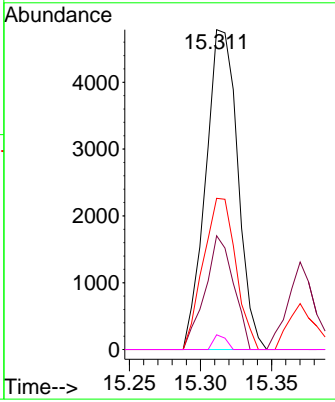
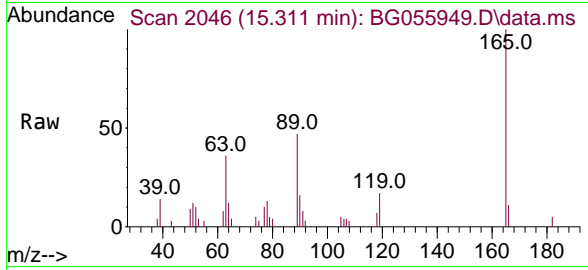




#57
 2,4-Dinitrotoluene
 Concen: 17.465 ng
 RT: 15.311 min Scan# 2047
 Delta R.T. -0.004 min
 Lab File: BG055949.D
 Acq: 13 Dec 2022 19:15

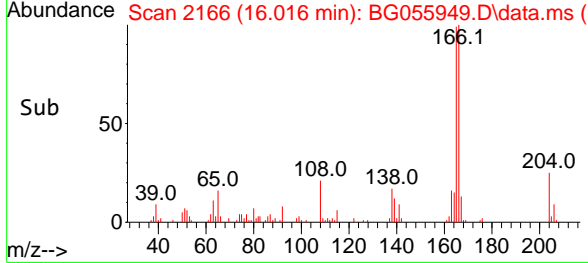
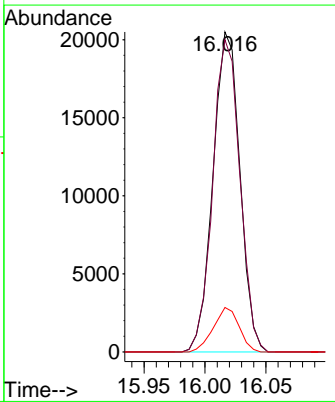
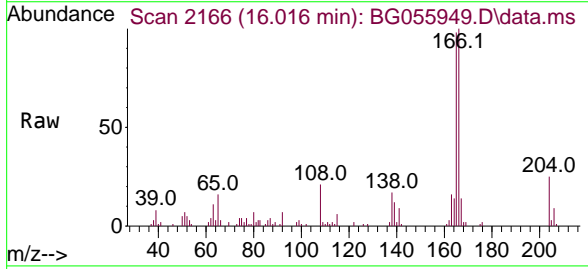
Instrument : BNA_G
 ClientSampleId : SSTDICC020

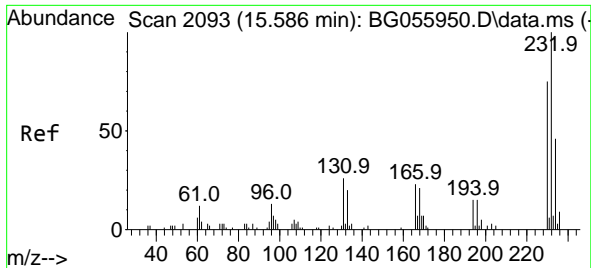
Tgt Ion	Resp	Lower	Upper
165	7490		
165	100		
63	35.6	26.6	39.8
89	47.3	40.1	60.1
182	4.6	1.8	2.6



#58
 Fluorene
 Concen: 22.427 ng
 RT: 16.016 min Scan# 2166
 Delta R.T. -0.004 min
 Lab File: BG055949.D
 Acq: 13 Dec 2022 19:15

Tgt Ion	Resp	Lower	Upper
166	31435		
166	100		
165	97.5	81.1	121.7
167	13.9	10.5	15.7





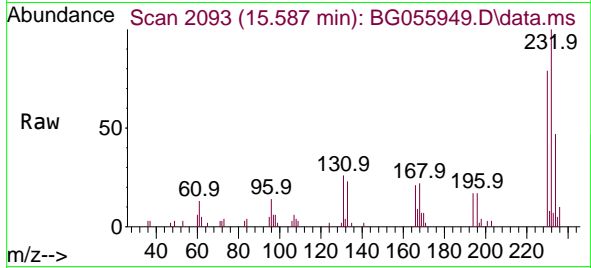
#59
 2,3,4,6-Tetrachlorophenol
 Concen: 28.633 ng
 RT: 15.587 min Scan# 2093
 Delta R.T. 0.002 min
 Lab File: BG055949.D
 Acq: 13 Dec 2022 19:15

Instrument :

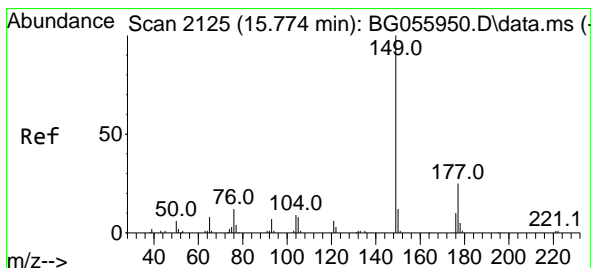
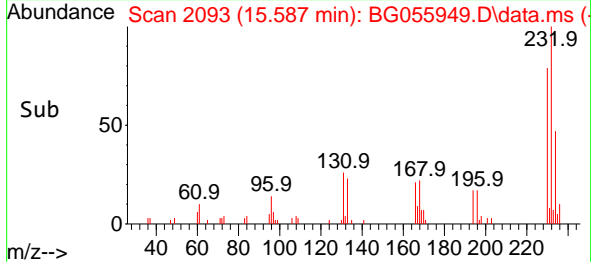
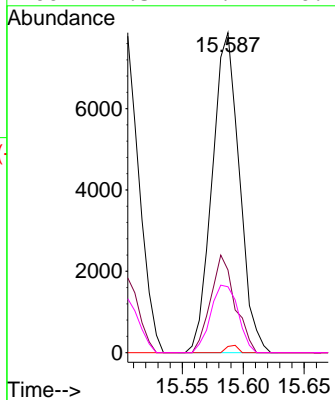
BNA_G

ClientSampleId :

SSTDICC020

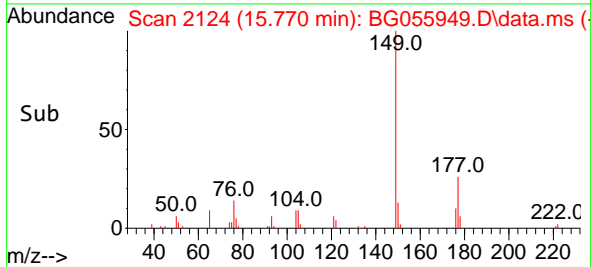
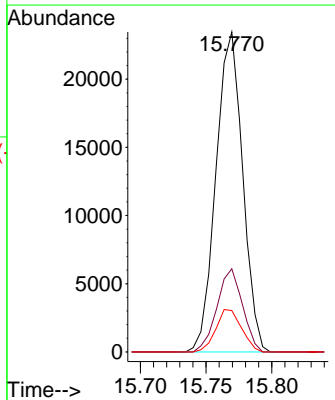
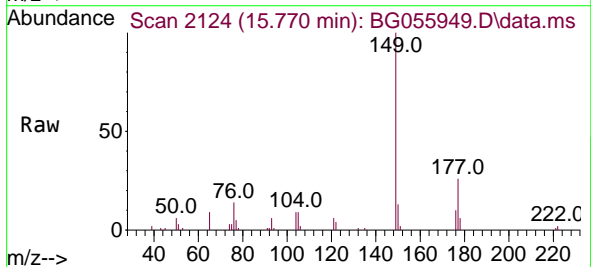


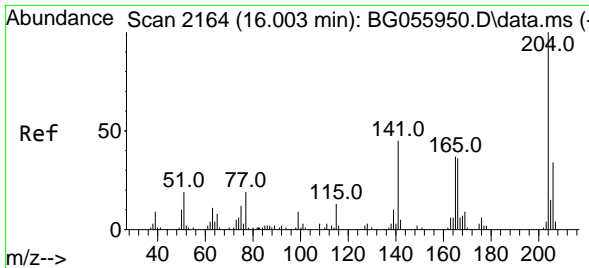
Tgt Ion:232 Resp: 12197
 Ion Ratio Lower Upper
 232 100
 131 27.4 20.7 31.1
 130 1.0 1.2 1.8#
 166 21.3 17.4 26.2



#60
 Diethylphthalate
 Concen: 22.108 ng
 RT: 15.770 min Scan# 2124
 Delta R.T. -0.004 min
 Lab File: BG055949.D
 Acq: 13 Dec 2022 19:15

Tgt Ion:149 Resp: 33252
 Ion Ratio Lower Upper
 149 100
 177 26.0 19.7 29.5
 150 12.9 9.5 14.3

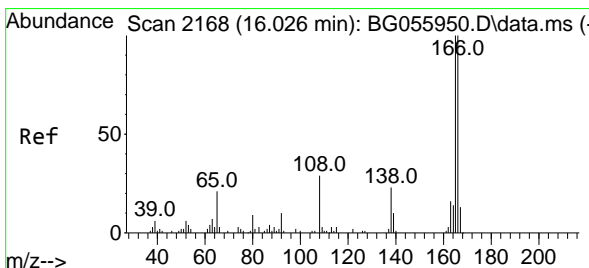
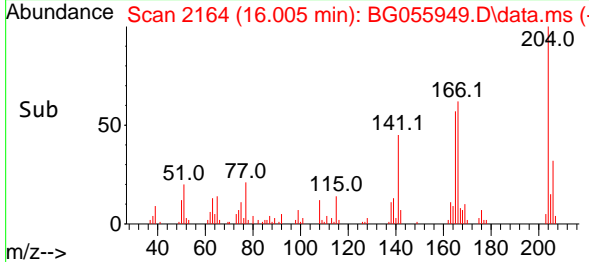
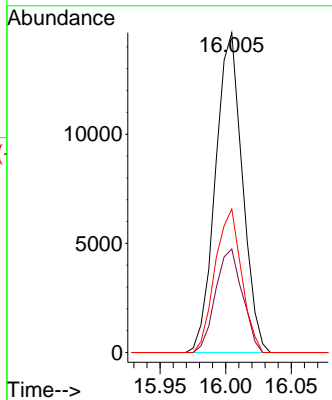
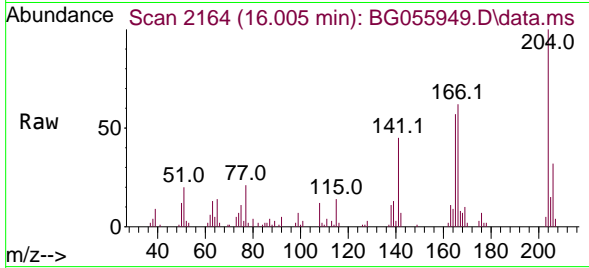




#61
 4-Chlorophenyl-phenylether
 Concen: 27.176 ng
 RT: 16.005 min Scan# 2167
 Delta R.T. 0.002 min
 Lab File: BG055949.D
 Acq: 13 Dec 2022 19:15

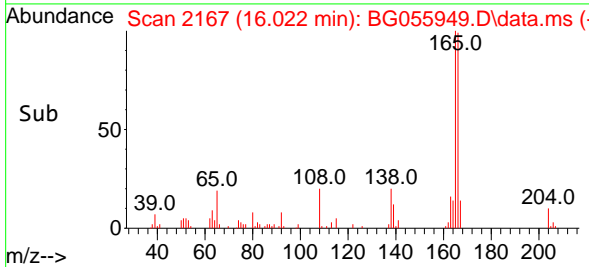
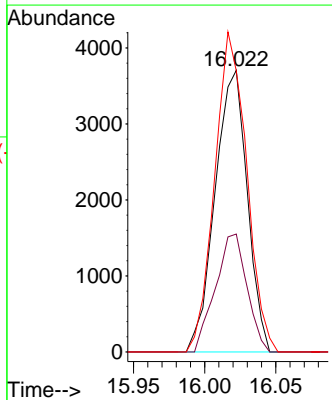
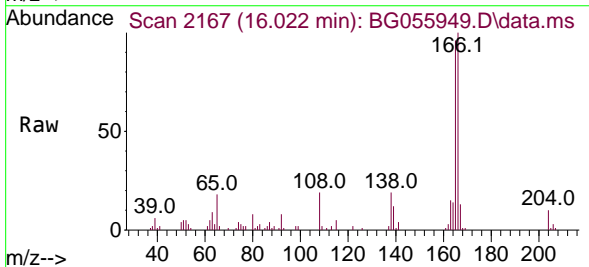
Instrument :
 BNA_G
 ClientSampleId :
 SSTDICC020

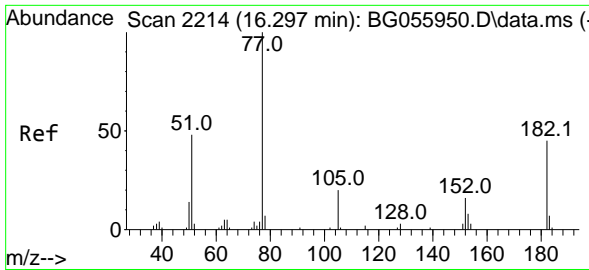
Tgt Ion:204 Resp: 20939
 Ion Ratio Lower Upper
 204 100
 206 32.4 27.0 40.4
 141 44.9 36.3 54.5



#62
 4-Nitroaniline
 Concen: 16.705 ng
 RT: 16.022 min Scan# 2167
 Delta R.T. -0.004 min
 Lab File: BG055949.D
 Acq: 13 Dec 2022 19:15

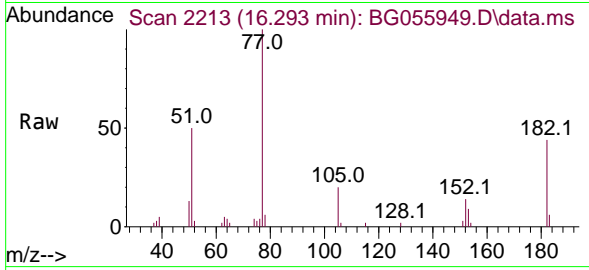
Tgt Ion:138 Resp: 5831
 Ion Ratio Lower Upper
 138 100
 92 41.9 24.4 64.4
 108 99.9 110.1 150.1#





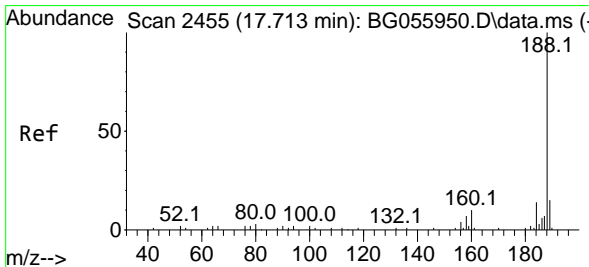
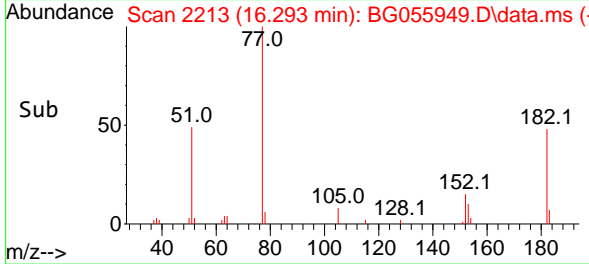
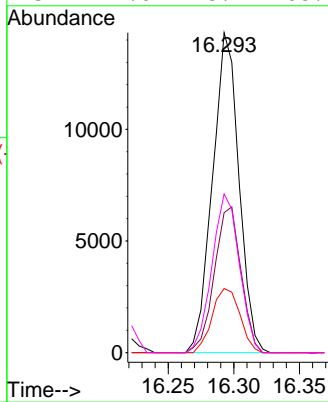
#63
 Azobenzene
 Concen: 15.273 ng
 RT: 16.293 min Scan# 21
 Delta R.T. -0.004 min
 Lab File: BG055949.D
 Acq: 13 Dec 2022 19:15

Instrument : BNA_G
 ClientSampleId : SSTDICC020



Tgt Ion: 77 Resp: 20055

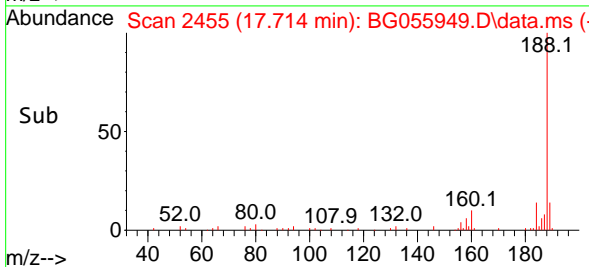
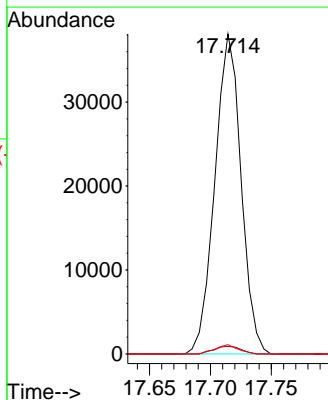
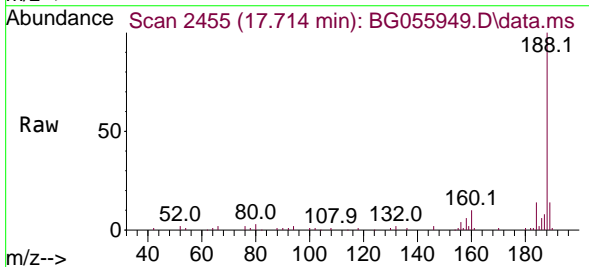
Ion	Ratio	Lower	Upper
77	100		
182	43.7	24.7	64.7
105	20.0	0.3	40.3
51	49.6	28.4	68.4

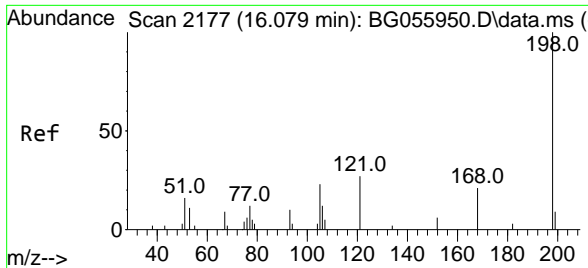


#64
 Phenanthrene-d10
 Concen: 20.000 ng
 RT: 17.714 min Scan# 2455
 Delta R.T. 0.002 min
 Lab File: BG055949.D
 Acq: 13 Dec 2022 19:15

Tgt Ion: 188 Resp: 56939

Ion	Ratio	Lower	Upper
188	100		
94	2.3	1.8	2.8
80	2.9	2.4	3.6





#65
 4,6-Dinitro-2-methylphenol
 Concen: 16.651 ng
 RT: 16.075 min Scan# 2199
 Delta R.T. -0.004 min
 Lab File: BG055949.D
 Acq: 13 Dec 2022 19:15

Instrument :

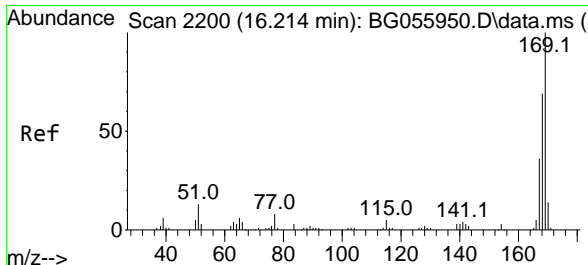
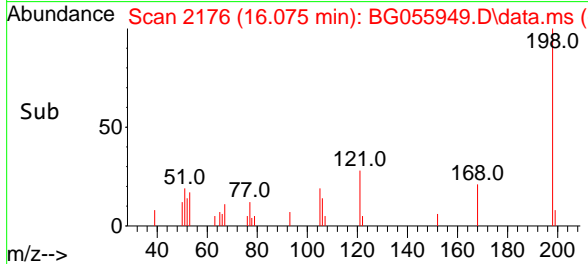
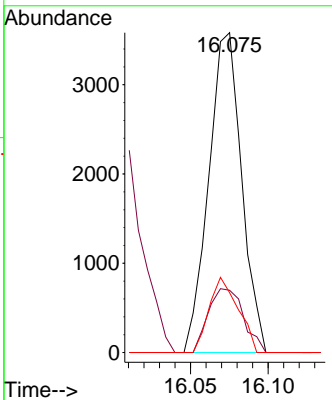
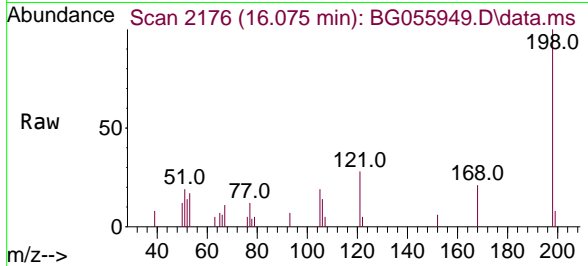
BNA_G

ClientSampleId :

SSTDICC020

Tgt Ion:198 Resp: 5294

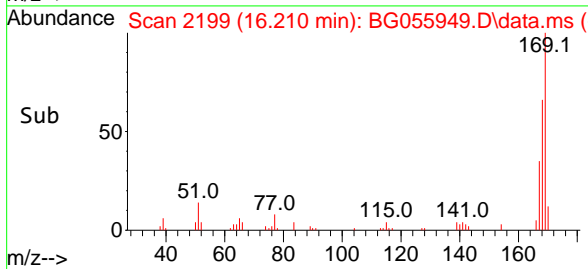
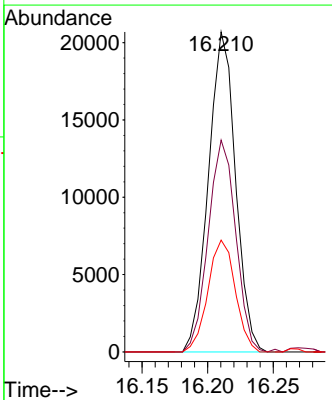
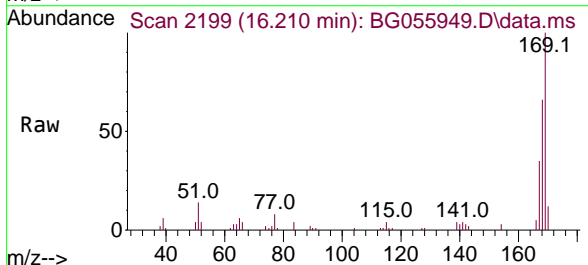
Ion	Ratio	Lower	Upper
198	100		
51	19.4	3.0	43.0
105	18.7	3.3	43.3

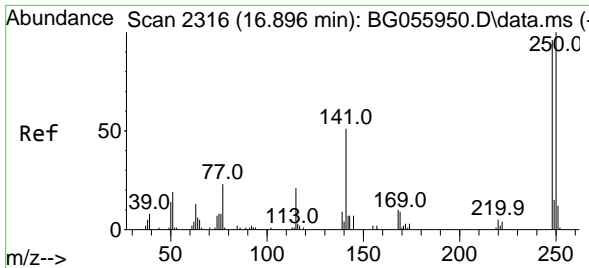


#66
 n-Nitrosodiphenylamine
 Concen: 18.988 ng
 RT: 16.210 min Scan# 2199
 Delta R.T. -0.004 min
 Lab File: BG055949.D
 Acq: 13 Dec 2022 19:15

Tgt Ion:169 Resp: 29796

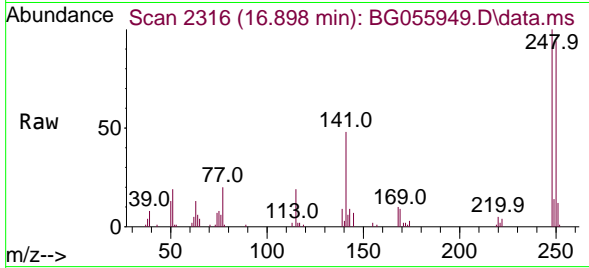
Ion	Ratio	Lower	Upper
169	100		
168	66.2	55.3	82.9
167	34.9	28.9	43.3



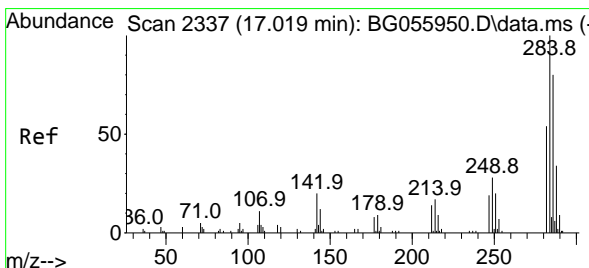
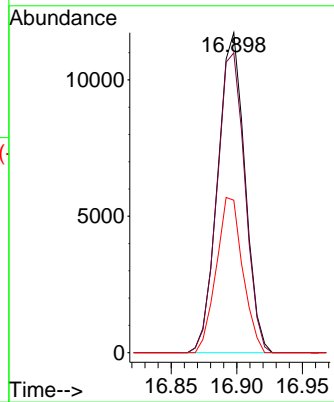
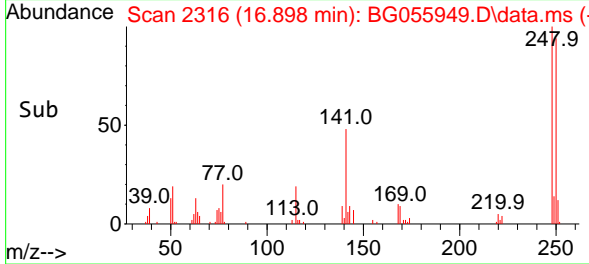


#67
 4-Bromophenyl-phenylether
 Concen: 26.045 ng
 RT: 16.898 min Scan# 2316
 Delta R.T. 0.002 min
 Lab File: BG055949.D
 Acq: 13 Dec 2022 19:15

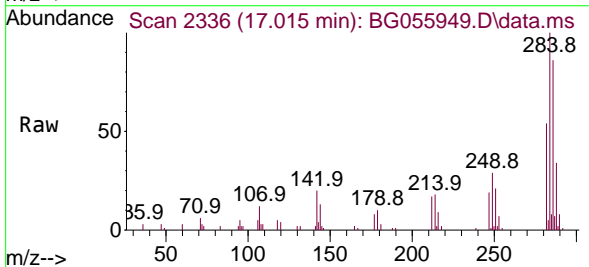
Instrument :
 BNA_G
 ClientSampleId :
 SSTDICC020



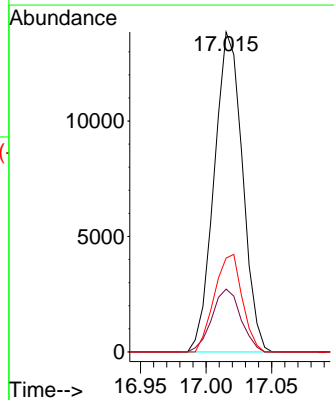
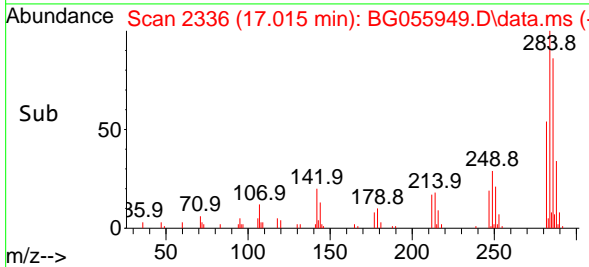
Tgt Ion:248 Resp: 16897
 Ion Ratio Lower Upper
 248 100
 250 93.7 83.0 124.6
 141 47.6 42.6 64.0

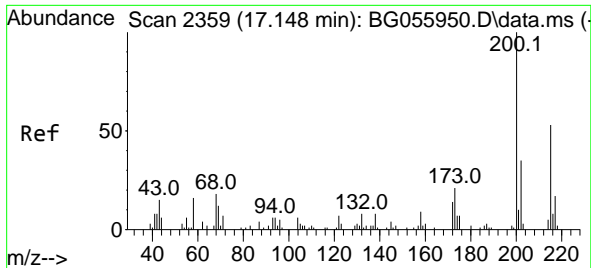


#68
 Hexachlorobenzene
 Concen: 28.876 ng
 RT: 17.015 min Scan# 2336
 Delta R.T. -0.004 min
 Lab File: BG055949.D
 Acq: 13 Dec 2022 19:15



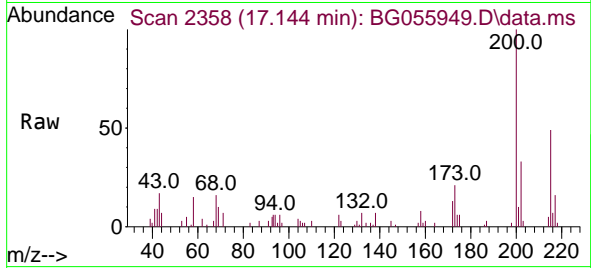
Tgt Ion:284 Resp: 20772
 Ion Ratio Lower Upper
 284 100
 142 19.6 16.2 24.2
 249 29.3 22.8 34.2



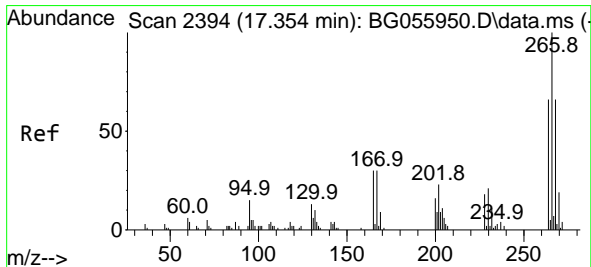
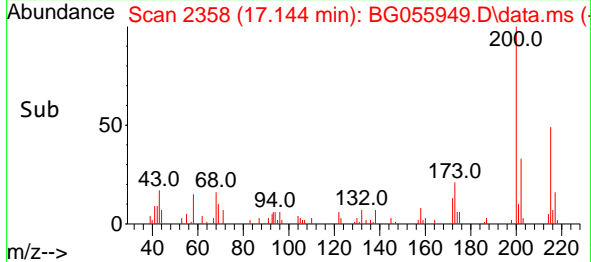
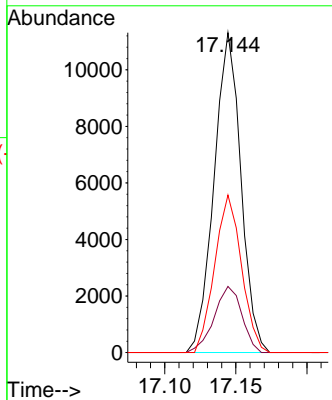


#69
Atrazine
 Concen: 23.943 ng
 RT: 17.144 min Scan# 2358
 Delta R.T. -0.004 min
 Lab File: BG055949.D
 Acq: 13 Dec 2022 19:15

Instrument :
 BNA_G
ClientSampleId :
 SSTDICC020

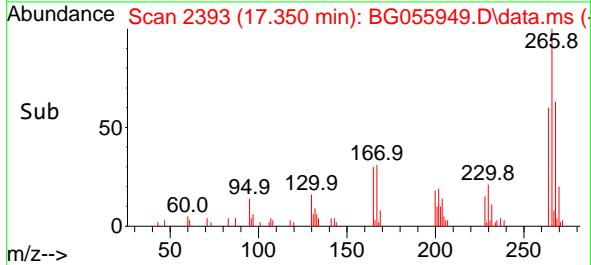
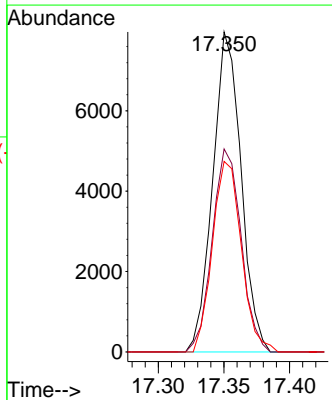
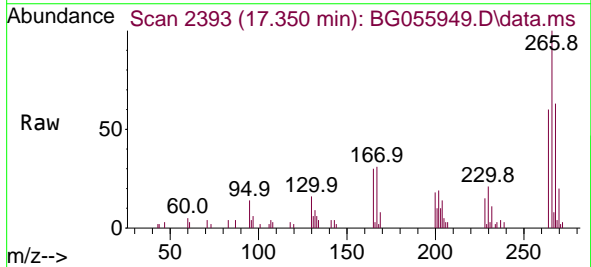


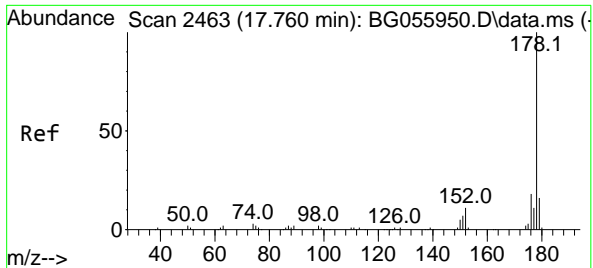
Tgt Ion:200 Resp: 14859
 Ion Ratio Lower Upper
 200 100
 173 20.7 1.4 41.4
 215 49.2 33.3 73.3



#70
Pentachlorophenol
 Concen: 27.128 ng
 RT: 17.350 min Scan# 2393
 Delta R.T. -0.004 min
 Lab File: BG055949.D
 Acq: 13 Dec 2022 19:15

Tgt Ion:266 Resp: 11938
 Ion Ratio Lower Upper
 266 100
 268 67.4 55.5 83.3
 264 59.5 52.6 78.8



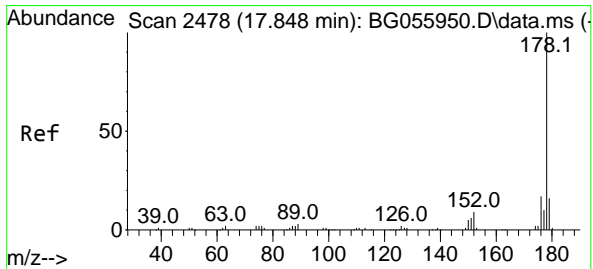
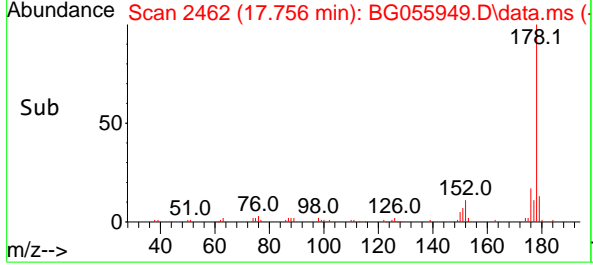
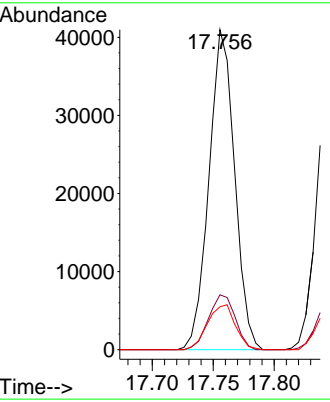
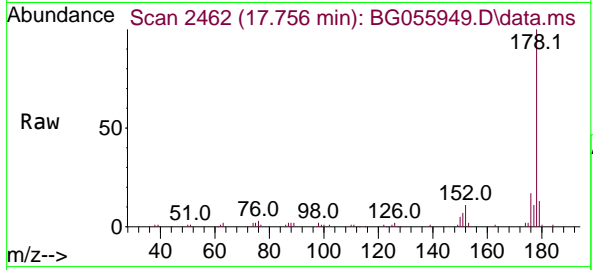


#71
 Phenanthrene
 Concen: 19.512 ng
 RT: 17.756 min Scan# 2462
 Delta R.T. -0.004 min
 Lab File: BG055949.D
 Acq: 13 Dec 2022 19:15

Instrument : BNA_G
 ClientSampleId : SSTDICC020

Tgt Ion:178 Resp: 59955

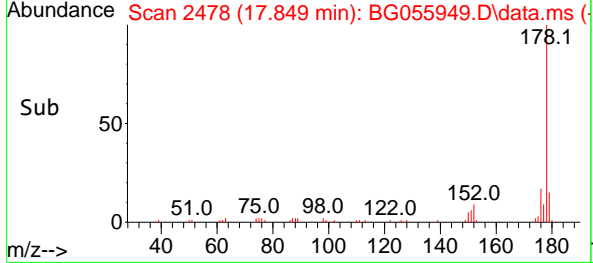
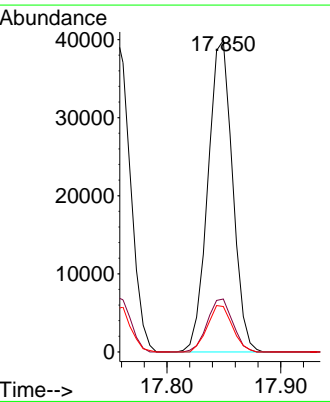
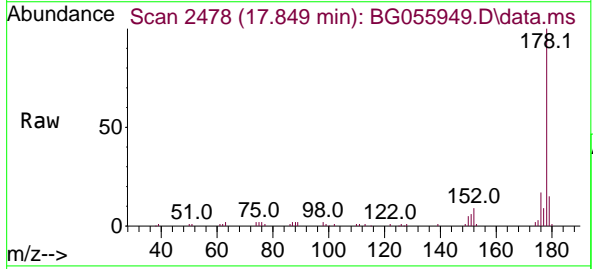
Ion	Ratio	Lower	Upper
178	100		
176	17.2	14.4	21.6
179	13.4	12.7	19.1

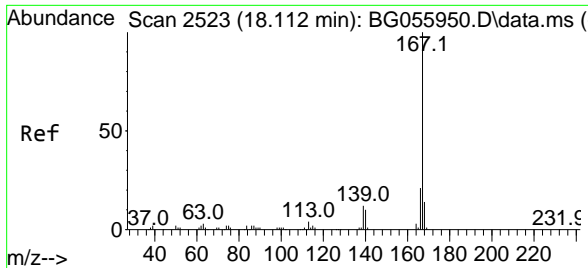


#72
 Anthracene
 Concen: 20.116 ng
 RT: 17.849 min Scan# 2478
 Delta R.T. 0.002 min
 Lab File: BG055949.D
 Acq: 13 Dec 2022 19:15

Tgt Ion:178 Resp: 60057

Ion	Ratio	Lower	Upper
178	100		
176	17.0	13.9	20.9
179	14.6	12.7	19.1

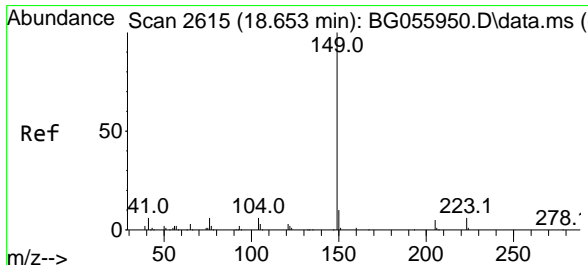
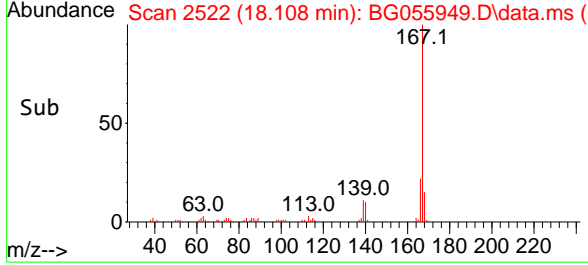
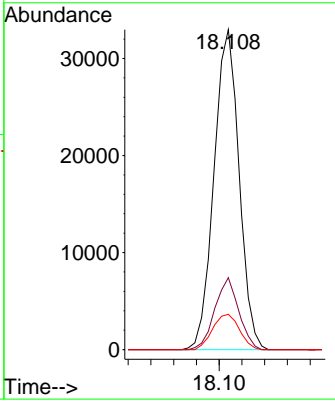
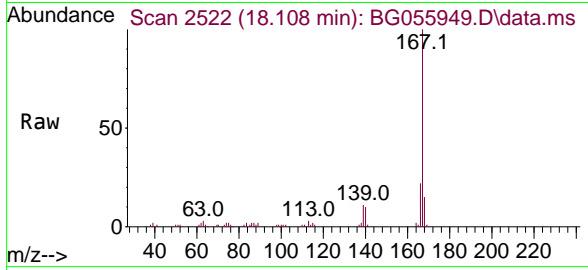




#73
 Carbazole
 Concen: 18.797 ng
 RT: 18.108 min Scan# 2522
 Delta R.T. -0.004 min
 Lab File: BG055949.D
 Acq: 13 Dec 2022 19:15

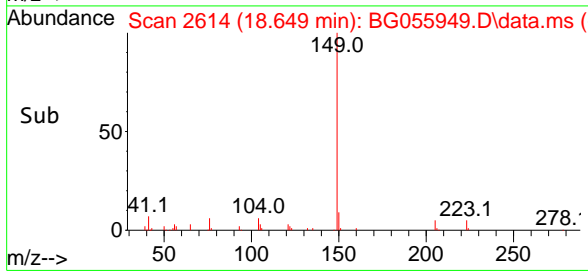
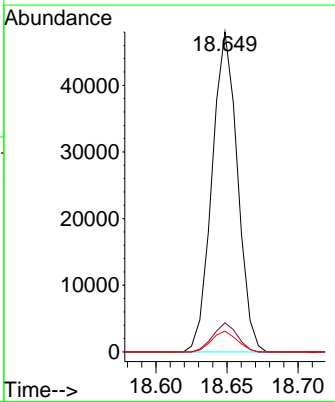
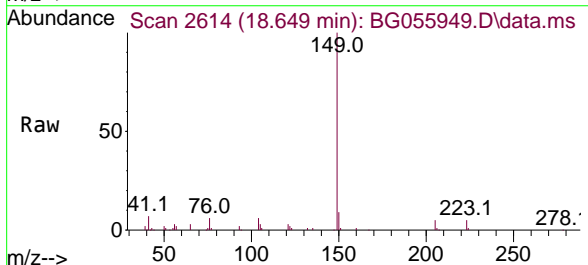
Instrument : BNA_G
 ClientSampleId : SSTDICC020

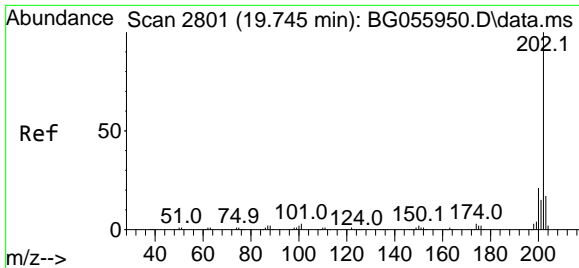
Tgt Ion	Resp	Lower	Upper
167	100		
166	22.5	16.6	25.0
139	11.0	9.7	14.5



#74
 Di-n-butylphthalate
 Concen: 17.974 ng
 RT: 18.649 min Scan# 2614
 Delta R.T. -0.004 min
 Lab File: BG055949.D
 Acq: 13 Dec 2022 19:15

Tgt Ion	Resp	Lower	Upper
149	100		
150	9.1	7.7	11.5
104	6.5	4.8	7.2

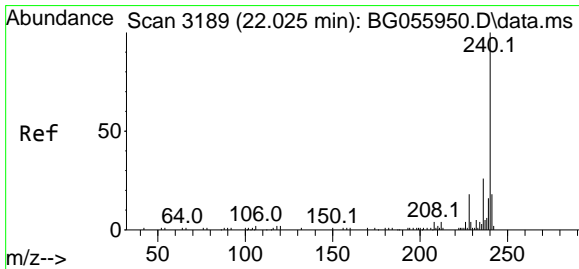
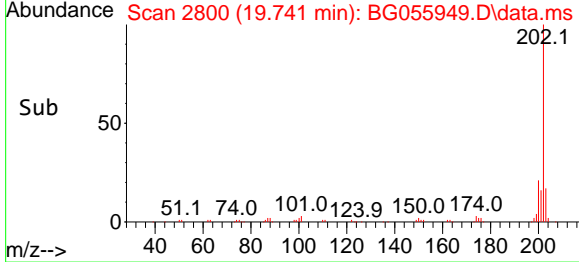
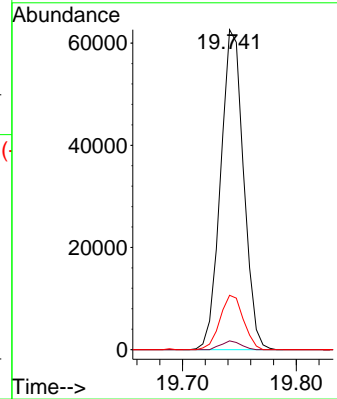
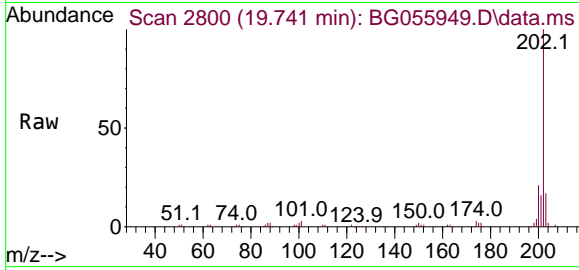




#75
 Fluoranthene
 Concen: 23.461 ng
 RT: 19.741 min Scan# 2800
 Delta R.T. -0.004 min
 Lab File: BG055949.D
 Acq: 13 Dec 2022 19:15

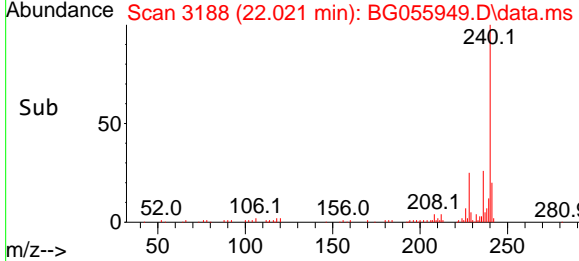
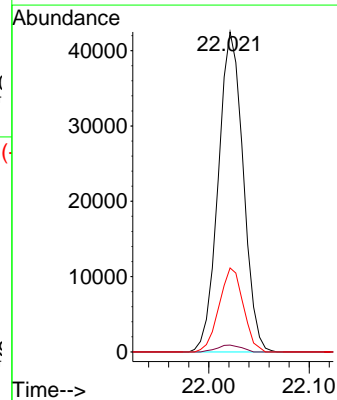
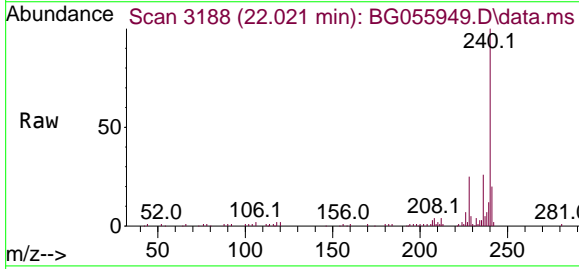
Instrument : BNA_G
 ClientSampleId : SSTDICC020

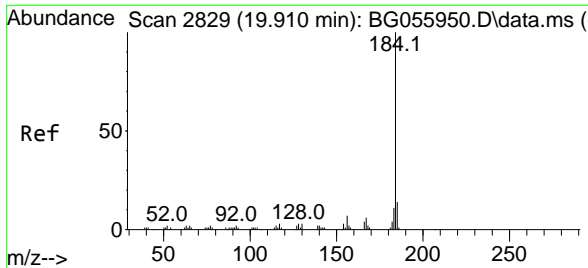
Tgt Ion	Resp	Lower	Upper
202	87699	100	100
101	2.7	0.0	22.6
203	17.0	0.0	37.1



#76
 Chrysene-d12
 Concen: 20.000 ng
 RT: 22.021 min Scan# 3188
 Delta R.T. -0.004 min
 Lab File: BG055949.D
 Acq: 13 Dec 2022 19:15

Tgt Ion	Resp	Lower	Upper
240	73372	100	100
120	2.1	1.7	2.5
236	26.2	21.1	31.7



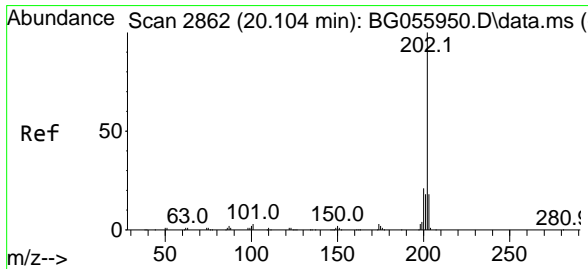
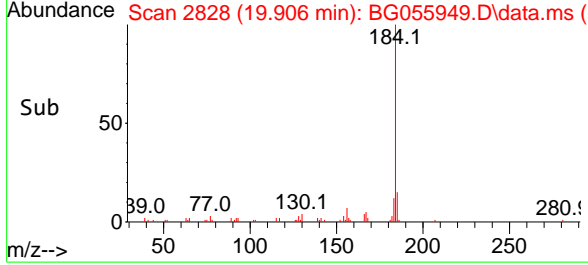
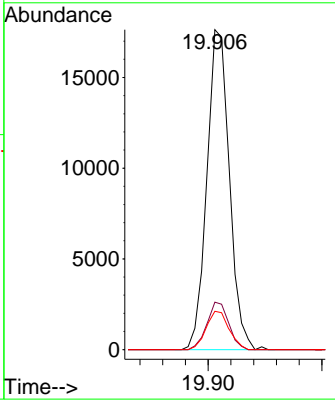
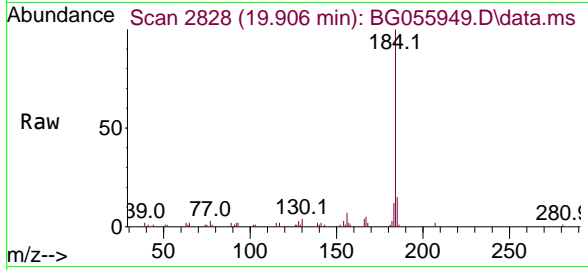


#77
 Benzidine
 Concen: 14.270 ng
 RT: 19.906 min Scan# 2828
 Delta R.T. -0.004 min
 Lab File: BG055949.D
 Acq: 13 Dec 2022 19:15

Instrument : BNA_G
 ClientSampleId : SSTDICC020

Tgt Ion:184 Resp: 24222

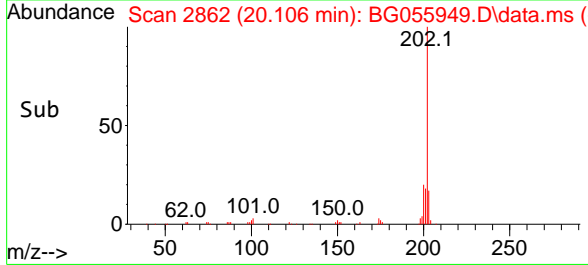
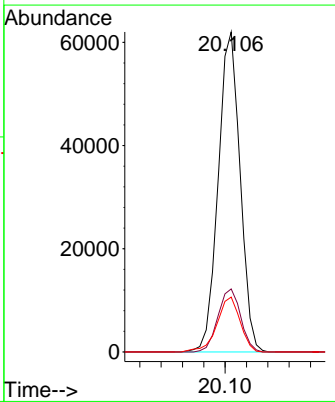
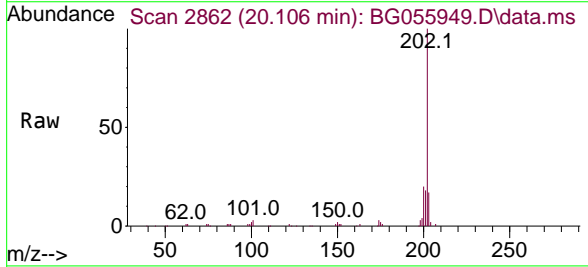
Ion	Ratio	Lower	Upper
184	100		
185	14.8	10.9	16.3
183	12.0	9.2	13.8

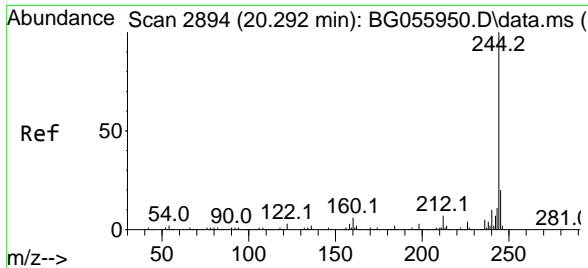


#78
 Pyrene
 Concen: 17.786 ng
 RT: 20.106 min Scan# 2862
 Delta R.T. 0.002 min
 Lab File: BG055949.D
 Acq: 13 Dec 2022 19:15

Tgt Ion:202 Resp: 88333

Ion	Ratio	Lower	Upper
202	100		
200	19.7	16.7	25.1
203	17.1	14.6	21.8



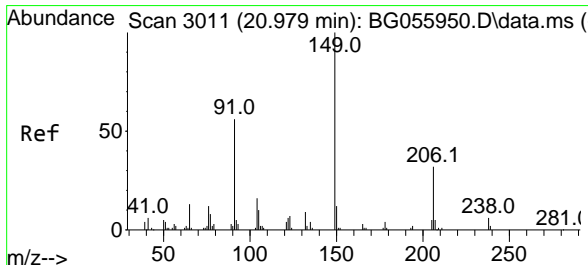
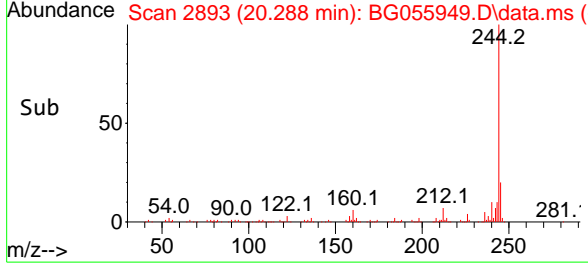
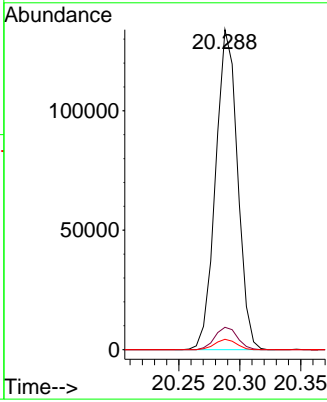
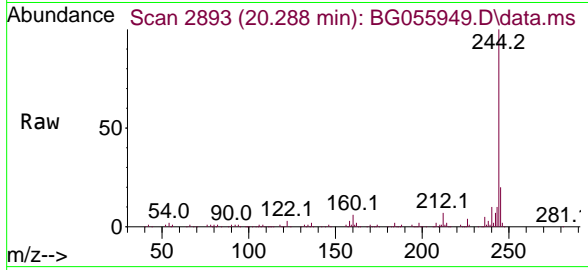


#79
 Terphenyl-d14
 Concen: 45.749 ng
 RT: 20.288 min Scan# 2893
 Delta R.T. -0.004 min
 Lab File: BG055949.D
 Acq: 13 Dec 2022 19:15

Instrument : BNA_G
 ClientSampleId : SSTDICC020

Tgt Ion:244 Resp: 167825

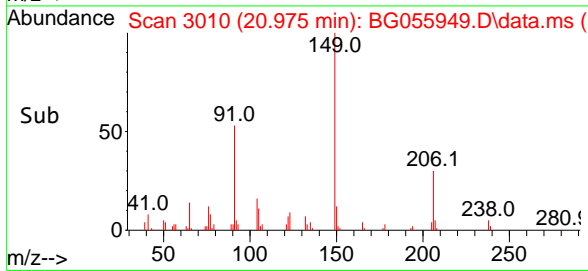
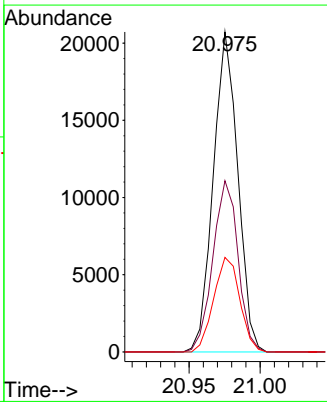
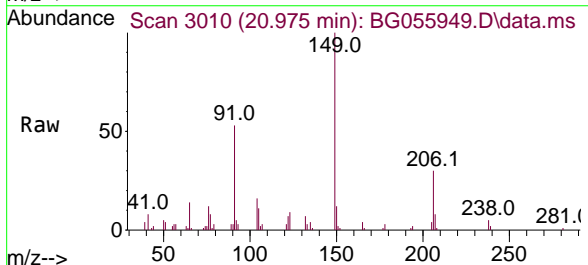
Ion	Ratio	Lower	Upper
244	100		
212	7.0	5.8	8.6
122	3.2	2.5	3.7

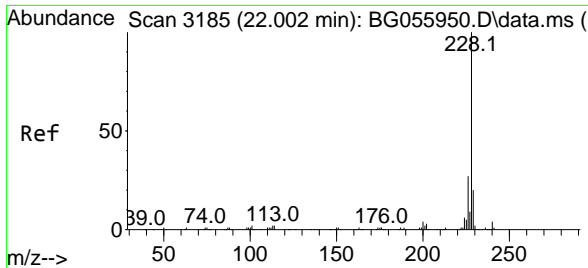


#80
 Butylbenzylphthalate
 Concen: 12.777 ng
 RT: 20.975 min Scan# 3010
 Delta R.T. -0.004 min
 Lab File: BG055949.D
 Acq: 13 Dec 2022 19:15

Tgt Ion:149 Resp: 24841

Ion	Ratio	Lower	Upper
149	100		
91	53.5	44.5	66.7
206	29.5	25.8	38.6



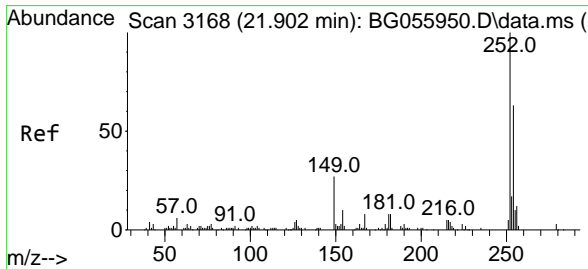
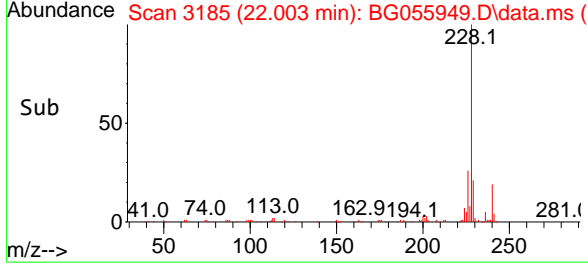
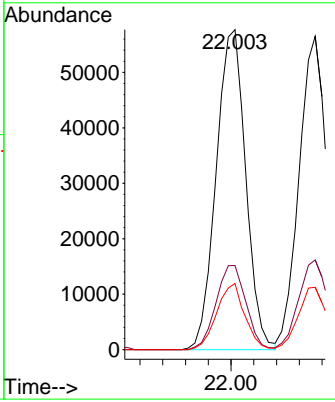
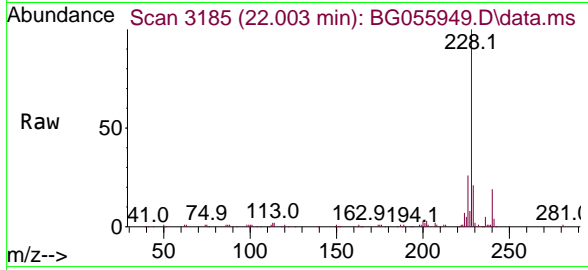


#81
 Benzo(a)anthracene
 Concen: 20.595 ng
 RT: 22.003 min Scan# 3185
 Delta R.T. 0.002 min
 Lab File: BG055949.D
 Acq: 13 Dec 2022 19:15

Instrument : BNA_G
 ClientSampleId : SSTDICC020

Tgt Ion:228 Resp: 104077

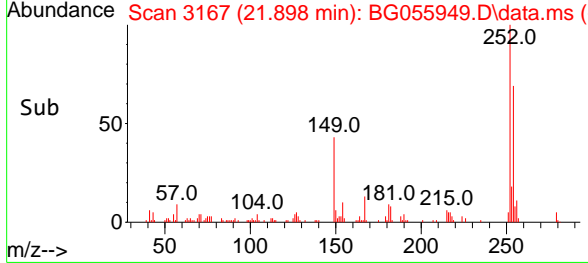
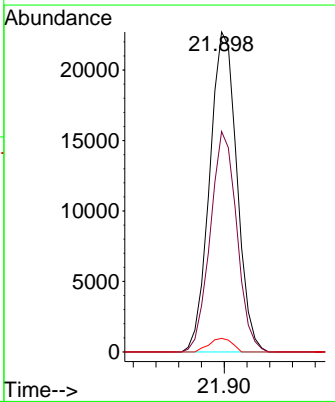
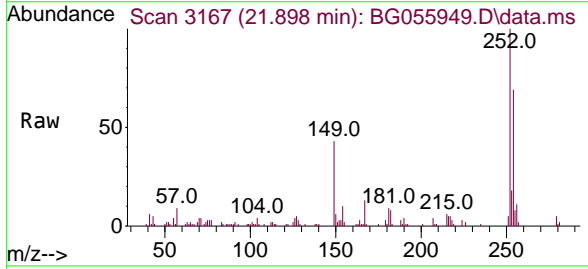
Ion	Ratio	Lower	Upper
228	100		
226	26.3	21.8	32.6
229	20.7	15.9	23.9

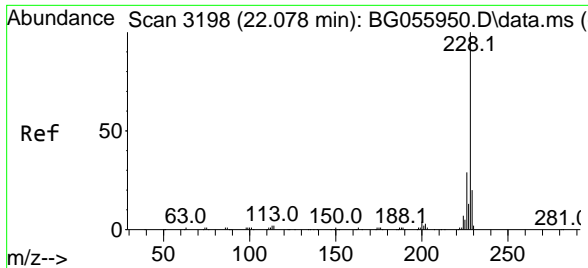


#82
 3,3'-Dichlorobenzidine
 Concen: 21.226 ng
 RT: 21.898 min Scan# 3167
 Delta R.T. -0.004 min
 Lab File: BG055949.D
 Acq: 13 Dec 2022 19:15

Tgt Ion:252 Resp: 37691

Ion	Ratio	Lower	Upper
252	100		
254	68.9	50.2	75.2
126	4.2	3.1	4.7



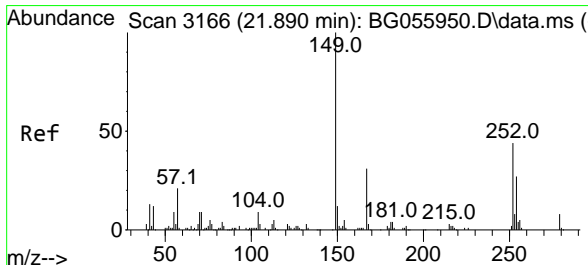
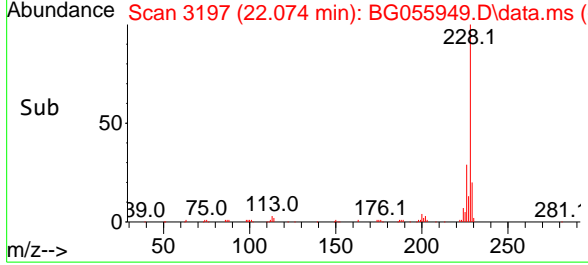
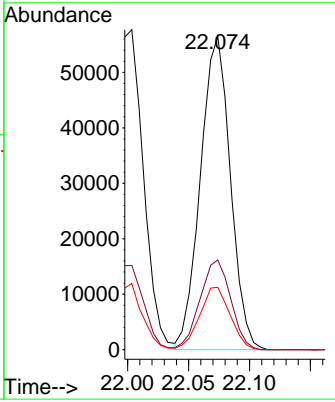
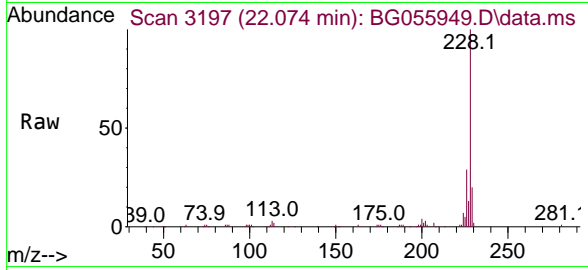


#83
 Chrysene
 Concen: 20.080 ng
 RT: 22.074 min Scan# 3197
 Delta R.T. -0.004 min
 Lab File: BG055949.D
 Acq: 13 Dec 2022 19:15

Instrument : BNA_G
 ClientSampleId : SSTDICC020

Tgt Ion:228 Resp: 96606

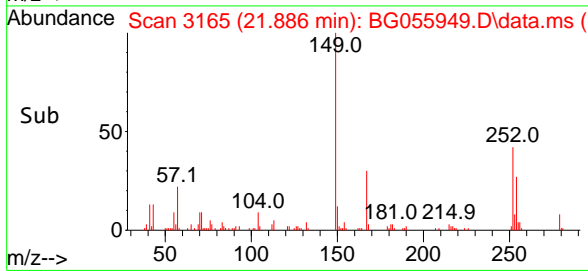
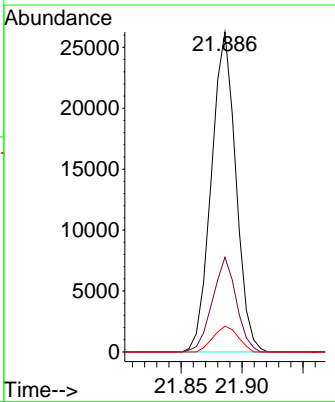
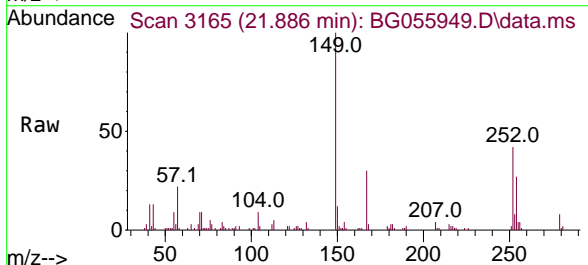
Ion	Ratio	Lower	Upper
228	100		
226	28.6	23.1	34.7
229	19.9	15.7	23.5

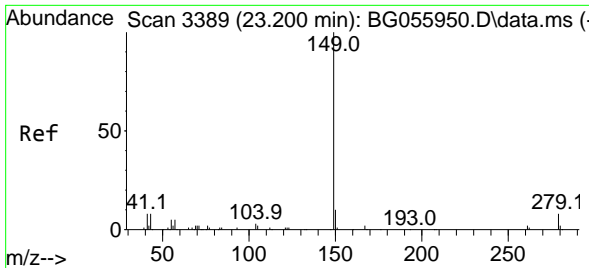


#84
 Bis(2-ethylhexyl)phthalate
 Concen: 13.107 ng
 RT: 21.886 min Scan# 3165
 Delta R.T. -0.004 min
 Lab File: BG055949.D
 Acq: 13 Dec 2022 19:15

Tgt Ion:149 Resp: 36624

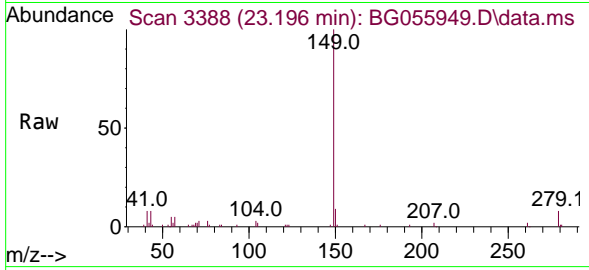
Ion	Ratio	Lower	Upper
149	100		
167	29.6	24.6	36.8
279	8.0	6.3	9.5



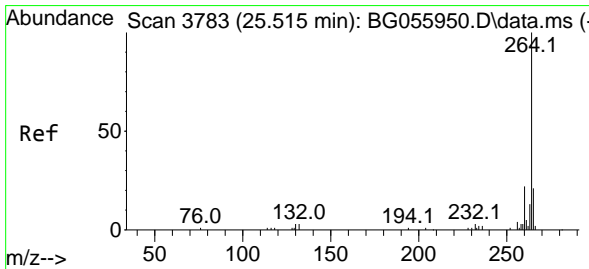
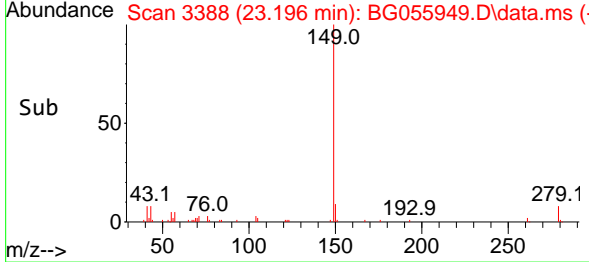
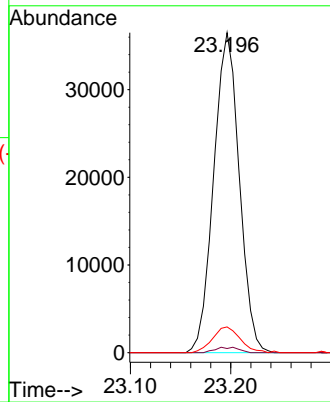


#85
 Di-n-octyl phthalate
 Concen: 13.514 ng
 RT: 23.196 min Scan# 3388
 Delta R.T. -0.004 min
 Lab File: BG055949.D
 Acq: 13 Dec 2022 19:15

Instrument : BNA_G
 ClientSampleId : SSTDICC020

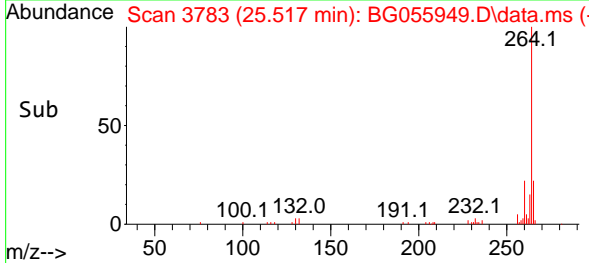
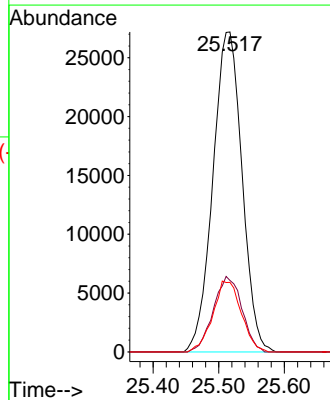
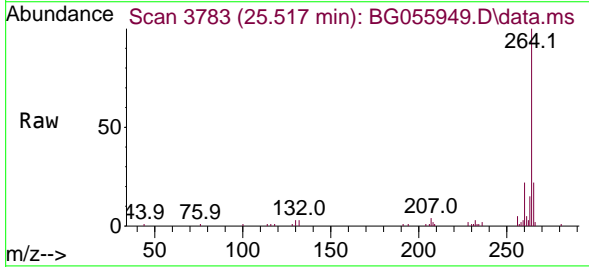


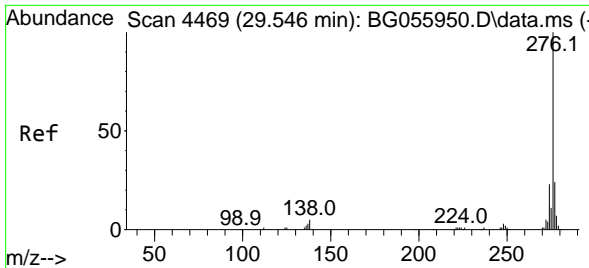
Tgt Ion:149 Resp: 64619
 Ion Ratio Lower Upper
 149 100
 167 1.5 1.4 2.0
 43 8.7 6.9 10.3



#86
 Perylene-d12
 Concen: 20.000 ng
 RT: 25.517 min Scan# 3783
 Delta R.T. 0.002 min
 Lab File: BG055949.D
 Acq: 13 Dec 2022 19:15

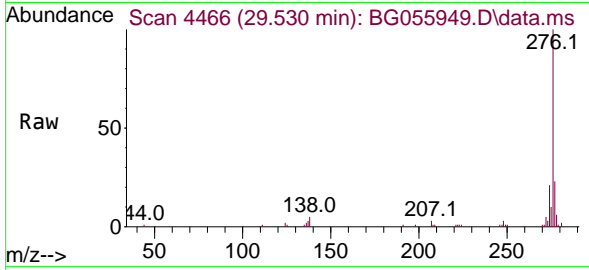
Tgt Ion:264 Resp: 83848
 Ion Ratio Lower Upper
 264 100
 260 22.3 17.8 26.8
 265 21.7 16.6 25.0



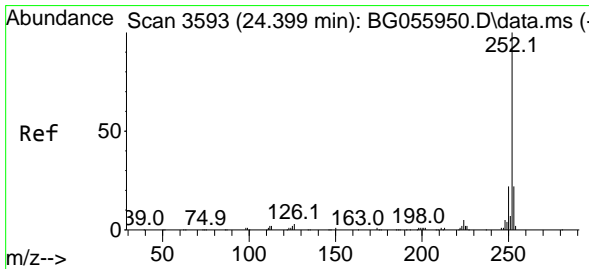
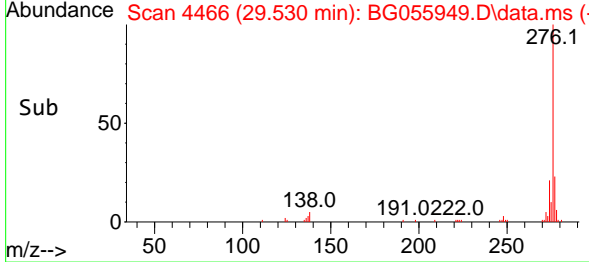
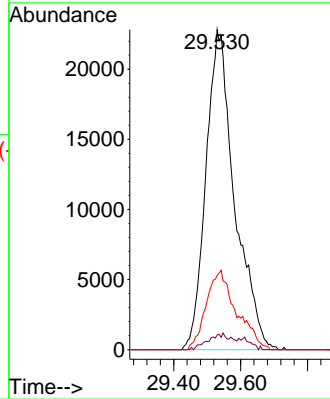


#87
 Indeno(1,2,3-cd)pyrene
 Concen: 19.749 ng
 RT: 29.530 min Scan# 4466
 Delta R.T. -0.016 min
 Lab File: BG055949.D
 Acq: 13 Dec 2022 19:15

Instrument : BNA_G
 ClientSampleId : SSTDICC020

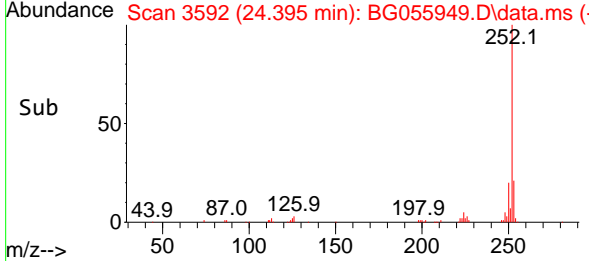
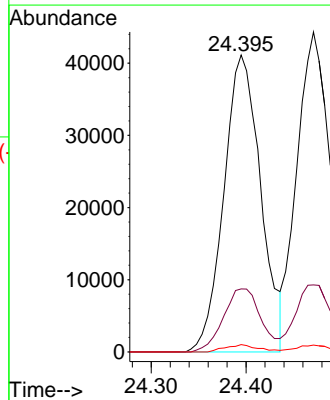
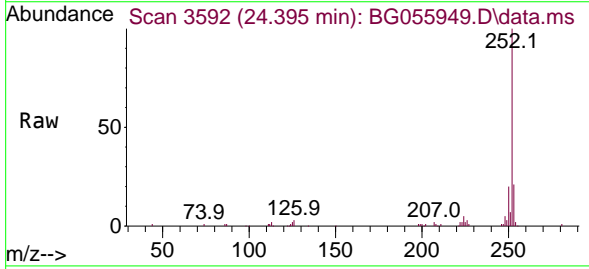


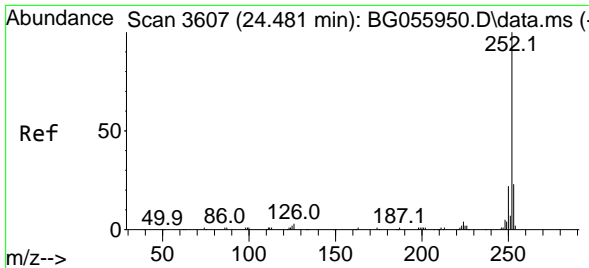
Tgt Ion: 276 Resp: 135655
 Ion Ratio Lower Upper
 276 100
 138 2.4 3.0 4.4#
 277 26.1 20.4 30.6



#88
 Benzo(b)fluoranthene
 Concen: 20.351 ng
 RT: 24.395 min Scan# 3592
 Delta R.T. -0.004 min
 Lab File: BG055949.D
 Acq: 13 Dec 2022 19:15

Tgt Ion: 252 Resp: 111127
 Ion Ratio Lower Upper
 252 100
 253 21.2 17.4 26.0
 125 2.4 1.8 2.8



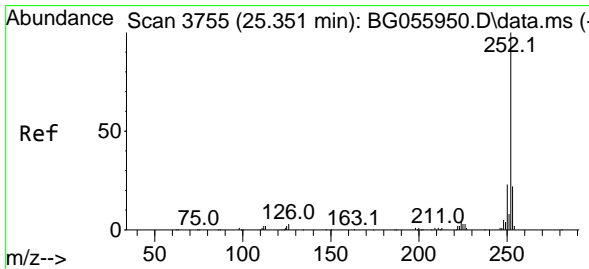
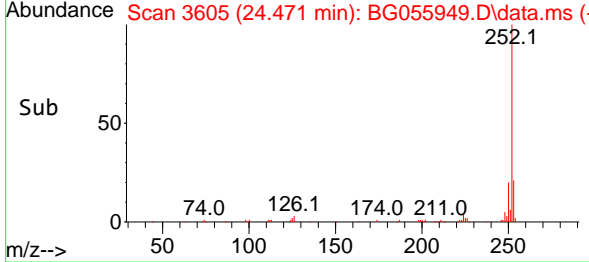
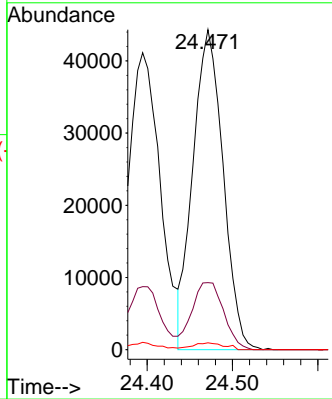
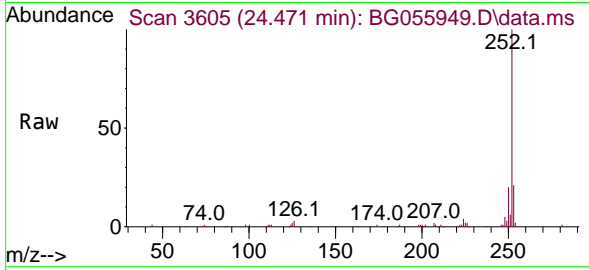


#89
 Benzo(k)fluoranthene
 Concen: 19.968 ng
 RT: 24.471 min Scan# 3605
 Delta R.T. -0.010 min
 Lab File: BG055949.D
 Acq: 13 Dec 2022 19:15

Instrument :
 BNA_G
 ClientSampleId :
 SSTDICC020

Tgt Ion:252 Resp: 108687

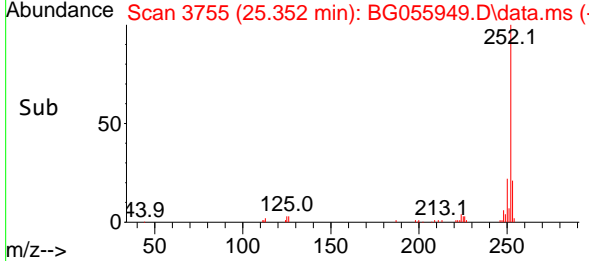
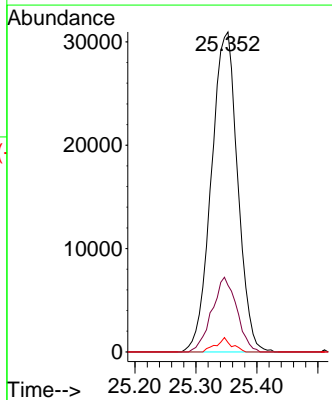
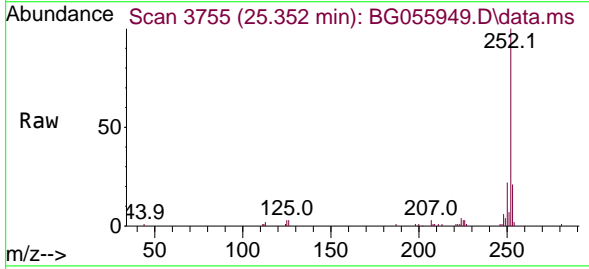
Ion	Ratio	Lower	Upper
252	100		
253	20.9	18.2	27.2
125	2.1	2.0	3.0

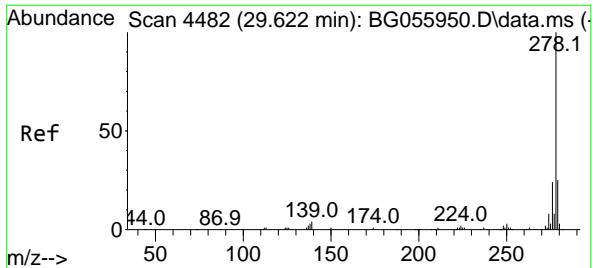


#90
 Benzo(a)pyrene
 Concen: 19.789 ng
 RT: 25.352 min Scan# 3755
 Delta R.T. 0.002 min
 Lab File: BG055949.D
 Acq: 13 Dec 2022 19:15

Tgt Ion:252 Resp: 92732

Ion	Ratio	Lower	Upper
252	100		
253	20.8	17.7	26.5
125	2.9	1.9	2.9



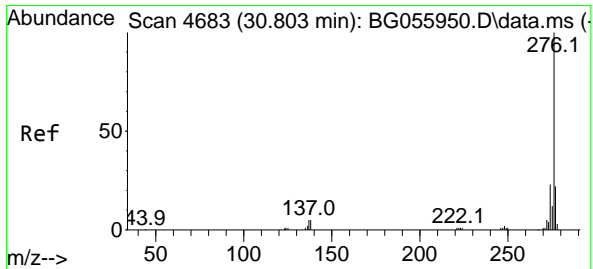
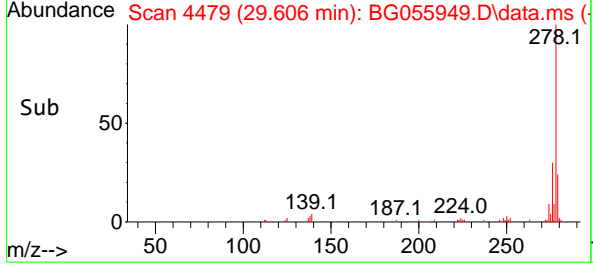
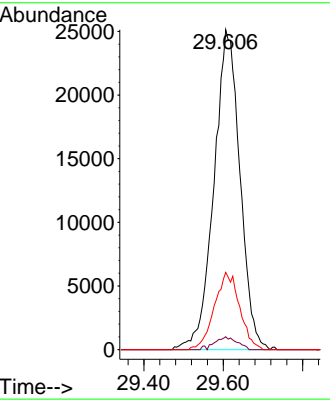
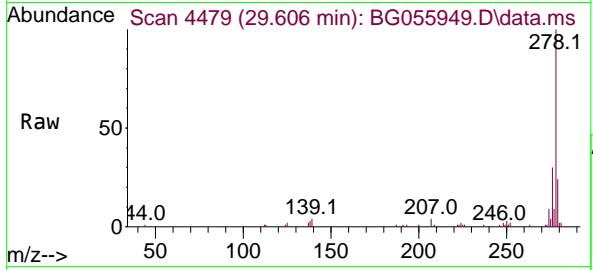


#91
 Dibenzo(a,h)anthracene
 Concen: 20.379 ng
 RT: 29.606 min Scan# 44
 Delta R.T. -0.016 min
 Lab File: BG055949.D
 Acq: 13 Dec 2022 19:15

Instrument : BNA_G
 ClientSampleId : SSTDICC020

Tgt Ion:278 Resp: 114393

Ion	Ratio	Lower	Upper
278	100		
139	4.0	2.9	4.3
279	24.1	20.0	30.0



#92
 Benzo(g,h,i)perylene
 Concen: 19.294 ng
 RT: 30.793 min Scan# 4681
 Delta R.T. -0.010 min
 Lab File: BG055949.D
 Acq: 13 Dec 2022 19:15

Tgt Ion:276 Resp: 109155

Ion	Ratio	Lower	Upper
276	100		
277	25.3	17.8	26.6
138	4.2	3.8	5.6

