

Data Path : Z:\svoasrv\HPCHEM1\BNA_G\Data\BG121421\
 Data File : BG051499.D
 Acq On : 14 Dec 2021 11:28
 Operator : CG/JU
 Sample : SSTD02037
 Misc :
 ALS Vial : 4 Sample Multiplier: 1

Instrument :
 BNA_G
 ClientSampleId :
 SSTD020437

Quant Time: Dec 14 13:34:20 2021
 Quant Method : Z:\svoasrv\HPCHEM1\BNA_G\Methods\SFAM-EPA-BG121421.M
 Quant Title : SVOA CALIBRATION
 QLast Update : Tue Dec 14 13:31:18 2021
 Response via : Initial Calibration

Compound	R.T.	QIon	Response	Conc	Units	Dev(Min)
Internal Standards						
1) 1,4-Dichlorobenzene-d4	8.287	152	29299	20.000	ng/ul	0.00
20) Naphthalene-d8	11.124	136	120663	20.000	ng/ul	# 0.00
38) Acenaphthene-d10	14.919	164	89157	20.000	ng/ul	0.00
64) Phenanthrene-d10	17.662	188	223222	20.000	ng/ul	# 0.00
79) Chrysene-d12	21.986	240	215937	20.000	ng/ul	# 0.00
88) Perylene-d12	25.493	264	211991	20.000	ng/ul	0.00
System Monitoring Compounds						
3) 1,4-Dioxane-d8	3.605	96	5578	7.383	ng/uL	0.00
4) Pyridine-d5	4.045	84	41777	20.066	ng/ul	0.00
7) Phenol-d5	7.417	99	52219	19.535	ng/ul	0.00
9) Bis-(2-Chloroethyl)eth...	7.594	67	32081	20.147	ng/ul	0.00
11) 2-Chlorophenol-d4	7.811	132	36383	19.499	ng/ul	0.00
15) 4-Methylphenol-d8	8.980	113	40266	18.596	ng/ul	0.00
21) Nitrobenzene-d5	9.456	128	17933	20.682	ng/ul	0.00
24) 2-Nitrophenol-d4	10.184	143	19642	22.064	ng/ul	0.00
28) 2,4-Dichlorophenol-d3	10.730	165	44053	19.843	ng/ul	0.00
31) 4-Chloroaniline-d4	11.242	131	56883	19.975	ng/ul	0.00
46) Dimethylphthalate-d6	14.314	166	146681	20.268	ng/ul	0.00
49) Acenaphthylene-d8	14.613	160	186143	20.731	ng/ul	0.00
54) 4-Nitrophenol-d4	15.078	143	23674	22.197	ng/ul	0.00
60) Fluorene-d10	15.906	176	131278	20.672	ng/ul	0.00
65) 4,6-Dinitro-2-methylph...	16.012	200	22115	21.739	ng/ul	0.00
73) Anthracene-d10	17.762	188	222825	20.524	ng/ul	0.00
81) Pyrene-d10	20.041	212	276821	20.447	ng/ul	0.00
92) Benzo(a)pyrene-d12	25.252	264	232409	20.913	ng/ul	0.00
Target Compounds						
2) 1,4-Dioxane	3.652	88	5785	8.013	ng/uL	90
5) Pyridine	4.063	79	44614	20.569	ng/ul	96
6) Benzaldehyde	7.406	77	40451	25.141	ng/ul	93
8) Phenol	7.441	94	52226	19.650	ng/ul#	90
10) Bis(2-Chloroethyl)ether	7.688	93	40271	19.960	ng/ul	93
12) 2-Chlorophenol	7.846	128	37387	18.934	ng/ul	95
13) 2-Methylphenol	8.716	108	40162	19.639	ng/ul	100
14) 2,2'-oxybis(1-Chloropr...	8.815	45	57486	20.648	ng/ul	97
16) Acetophenone	9.115	105	65975	19.534	ng/ul	91
17) N-Nitroso-di-n-propyla...	9.097	70	38805	18.796	ng/ul	90
18) 4-Methylphenol	9.045	108	41023	18.568	ng/ul	96
19) Hexachloroethane	9.391	117	16558	19.708	ng/ul#	82
22) Nitrobenzene	9.497	77	54407	22.290	ng/ul#	96
23) Isophorone	10.031	82	109276	20.107	ng/ul	98
25) 2-Nitrophenol	10.219	139	21117	21.706	ng/ul	95
26) 2,4-Dimethylphenol	10.266	107	50009	18.840	ng/ul	96
27) Bis(2-Chloroethoxy)met...	10.507	93	57208	19.393	ng/ul	95
29) 2,4-Dichlorophenol	10.754	162	40334	19.697	ng/ul	97
30) Naphthalene	11.177	128	134010	20.461	ng/ul	96
32) 4-Chloroaniline	11.271	127	58313	20.246	ng/ul	100
33) Hexachlorobutadiene	11.471	225	36795	21.766	ng/ul	96
34) Caprolactam	12.035	113	3108	5.049	ng/ul	87
35) 4-Chloro-3-methylphenol	12.369	107	47456	19.718	ng/ul	98
36) 2-Methylnaphthalene	12.769	142	97433	20.194	ng/ul	99

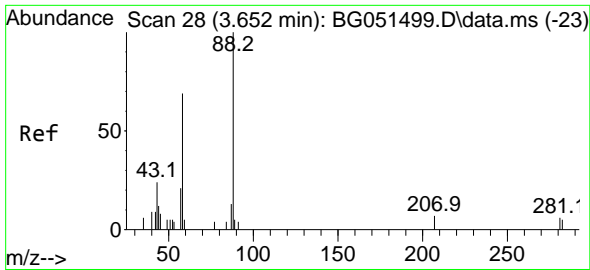
Data Path : Z:\svoasrv\HPCHEM1\BNA_G\Data\BG121421\
 Data File : BG051499.D
 Acq On : 14 Dec 2021 11:28
 Operator : CG/JU
 Sample : SSTD02037
 Misc :
 ALS Vial : 4 Sample Multiplier: 1

Instrument :
 BNA_G
 ClientSampleId :
 SSTD020437

Quant Time: Dec 14 13:34:20 2021
 Quant Method : Z:\svoasrv\HPCHEM1\BNA_G\Methods\SFAM-EPA-BG121421.M
 Quant Title : SVOA CALIBRATION
 QLast Update : Tue Dec 14 13:31:18 2021
 Response via : Initial Calibration

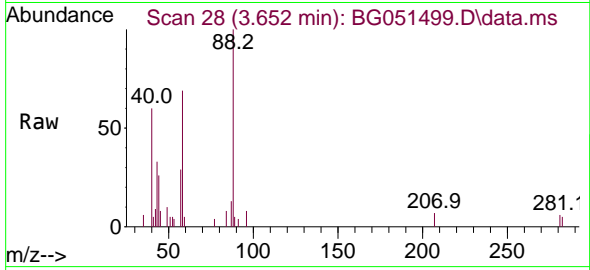
Compound	R.T.	QIon	Response	Conc	Units	Dev(Min)
37) 1-Methylnaphthalene	12.986	142	100123	20.226	ng/ul	94
39) 1,2,4,5-Tetrachloroben...	13.127	216	65129	21.149	ng/ul	96
40) Hexachlorocyclopentadiene	13.115	237	45114	20.613	ng/ul	98
41) 2,4,6-Trichlorophenol	13.356	196	38947	21.037	ng/ul	100
42) 2,4,5-Trichlorophenol	13.427	196	39710	20.261	ng/ul	97
43) 1,1'-Biphenyl	13.756	154	142254	21.097	ng/ul#	94
44) 2-Chloronaphthalene	13.803	162	110478	21.061	ng/ul	98
45) 2-Nitroaniline	13.991	65	33060	22.723	ng/ul#	86
47) Dimethylphthalate	14.361	163	144230	20.432	ng/ul#	99
48) 2,6-Dinitrotoluene	14.472	165	27882	23.787	ng/ul	97
50) Acenaphthylene	14.643	152	177467	20.223	ng/ul	97
51) 3-Nitroaniline	14.801	138	27485	23.673	ng/ul	91
52) Acenaphthene	14.984	153	116638	20.123	ng/ul	92
53) 2,4-Dinitrophenol	15.001	184	13763	21.760	ng/ul#	1
55) 4-Nitrophenol	15.089	109	24791	21.987	ng/ul	85
56) Dibenzofuran	15.318	168	174485	20.707	ng/ul	98
57) 2,4-Dinitrotoluene	15.260	165	39479	24.431	ng/ul	97
58) 2,3,4,6-Tetrachlorophenol	15.536	232	38507	21.034	ng/ul#	86
59) Diethylphthalate	15.718	149	147721	20.125	ng/ul	100
61) Fluorene	15.965	166	141160	20.238	ng/ul	99
62) 4-Chlorophenyl-phenyle...	15.953	204	81214	20.940	ng/ul	94
63) 4-Nitroaniline	15.959	138	28666	24.009	ng/ul	87
66) 4,6-Dinitro-2-methylph...	16.023	198	21620	21.107	ng/ul	100
67) N-Nitrosodiphenylamine	16.158	169	124671	19.909	ng/ul	97
68) 4-Bromophenyl-phenylether	16.846	248	46708	17.768	ng/ul#	89
69) Hexachlorobenzene	16.975	284	59646	20.503	ng/ul#	89
70) Atrazine	17.104	200	55691	19.842	ng/ul	97
71) Pentachlorophenol	17.310	266	34430	19.583	ng/ul	98
72) Phenanthrene	17.709	178	242936	20.961	ng/ul	99
74) Anthracene	17.797	178	241910	20.571	ng/ul	99
75) 1,2,3,4-Tetrachloroben...	13.726	216	71444	20.364	ng/ul	94
76) Pentachlorobenzene	15.236	250	70588	20.704	ng/ul	97
77) Carbazole	18.062	167	220732	20.777	ng/ul	98
78) Di-n-butylphthalate	18.614	149	259298	19.815	ng/ul	99
80) Fluoranthene	19.707	202	318961	20.389	ng/ul#	89
82) Pyrene	20.065	202	314236	20.612	ng/ul#	89
83) Butylbenzylphthalate	20.946	149	103203	19.437	ng/ul#	95
84) 3,3'-Dichlorobenzidine	21.868	252	108500	20.271	ng/ul#	97
85) Benzo(a)anthracene	21.968	228	294369	20.687	ng/ul	98
86) Bis(2-ethylhexyl)phtha...	21.868	149	144728	19.479	ng/ul#	96
87) Chrysene	22.039	228	282505	20.725	ng/ul	98
89) Di-n-octyl phthalate	23.184	149	238370	20.101	ng/ul	100
90) Benzo(b)fluoranthene	24.371	252	293270	20.876	ng/ul#	96
91) Benzo(k)fluoranthene	24.447	252	277298	21.306	ng/ul#	97
93) Benzo(a)pyrene	25.328	252	279055	20.951	ng/ul#	95
94) Indeno(1,2,3-cd)pyrene	29.534	276	257469	17.209	ng/ul#	91
95) Dibenzo(a,h)anthracene	29.605	278	257757	20.267	ng/ul#	93
96) Benzo(g,h,i)perylene	30.792	276	252139	19.643	ng/ul#	86

(#) = qualifier out of range (m) = manual integration (+) = signals summed



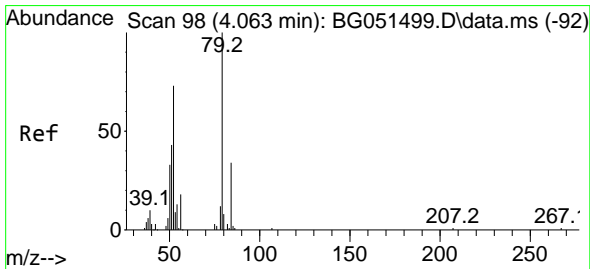
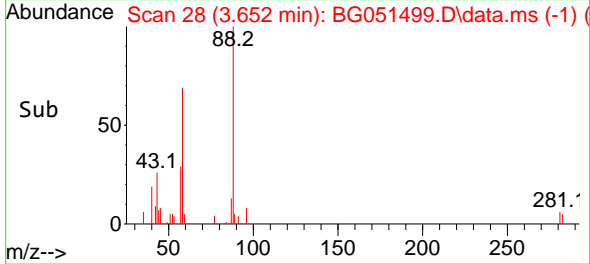
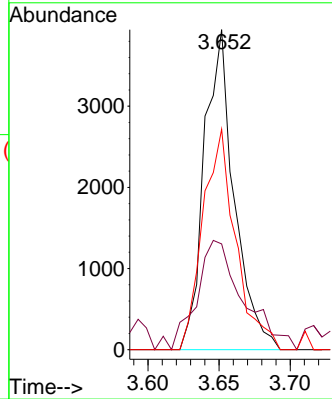
#2
 1,4-Dioxane
 Concen: 8.013 ng/uL
 RT: 3.652 min Scan# 21
 Delta R.T. 0.000 min
 Lab File: BG051499.D
 Acq: 14 Dec 2021 11:28

Instrument :
 BNA_G
 ClientSampleId :
 SSTD020437



Tgt Ion: 88 Resp: 5785

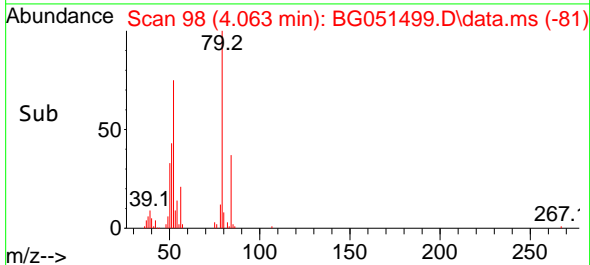
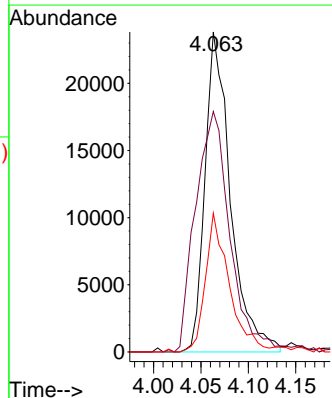
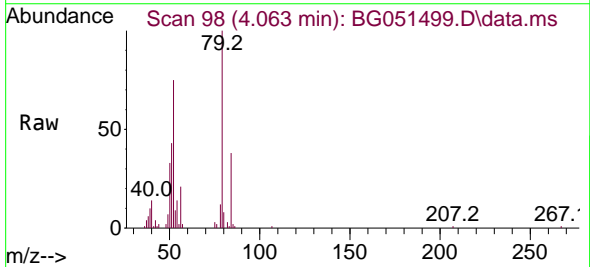
Ion	Ratio	Lower	Upper
88	100		
43	33.0	23.0	34.4
58	68.9	62.4	93.6

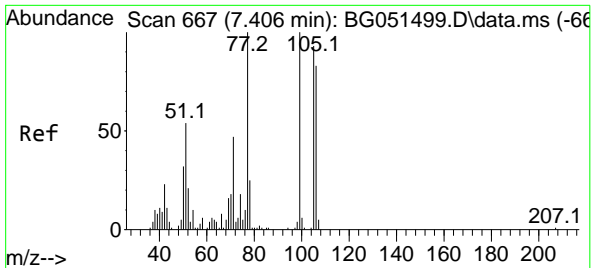


#5
 Pyridine
 Concen: 20.569 ng/uL
 RT: 4.063 min Scan# 98
 Delta R.T. 0.000 min
 Lab File: BG051499.D
 Acq: 14 Dec 2021 11:28

Tgt Ion: 79 Resp: 44614

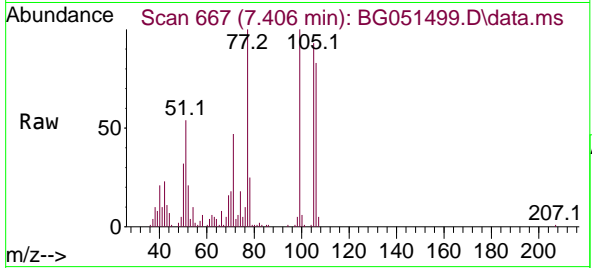
Ion	Ratio	Lower	Upper
79	100		
52	75.2	60.8	91.2
51	43.4	30.5	45.7



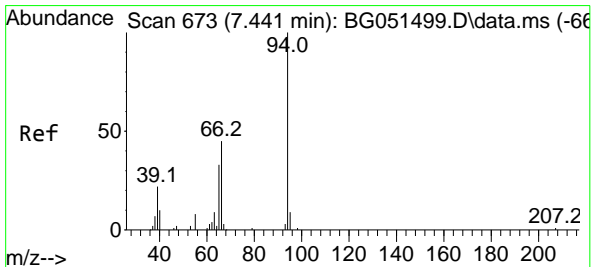
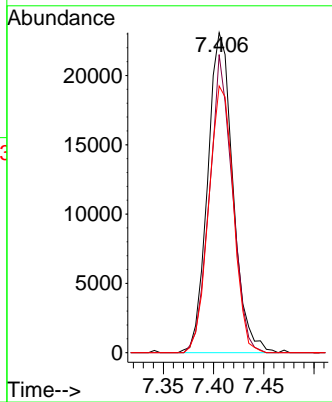
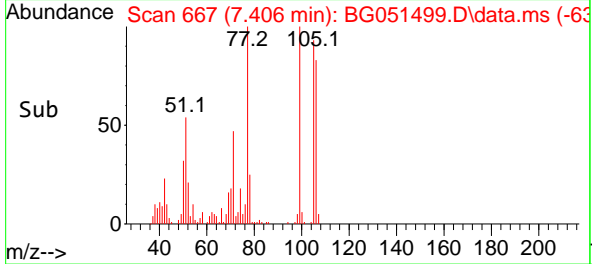


#6
Benzaldehyde
Concen: 25.141 ng/ul
RT: 7.406 min Scan# 667
Delta R.T. 0.000 min
Lab File: BG051499.D
Acq: 14 Dec 2021 11:28

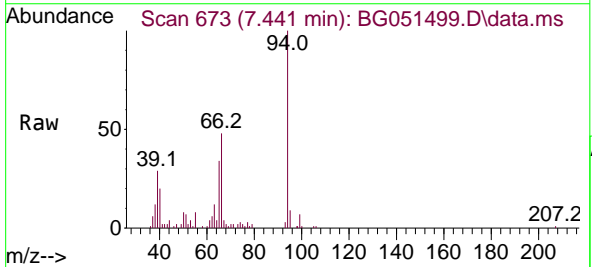
Instrument :
BNA_G
ClientSampleId :
SSTD020437



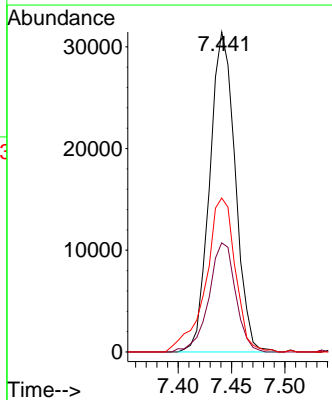
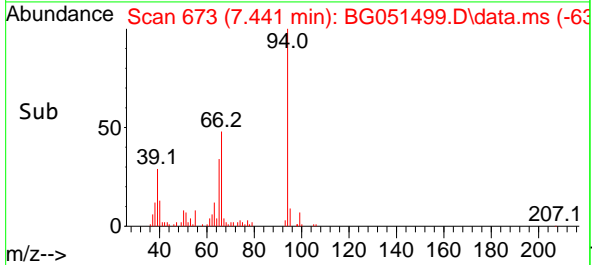
Tgt Ion: 77 Resp: 40451
Ion Ratio Lower Upper
77 100
105 93.1 70.4 105.6
106 83.3 61.2 91.8

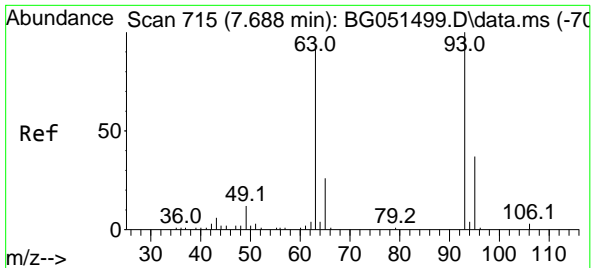


#8
Phenol
Concen: 19.650 ng/ul
RT: 7.441 min Scan# 673
Delta R.T. 0.000 min
Lab File: BG051499.D
Acq: 14 Dec 2021 11:28



Tgt Ion: 94 Resp: 52226
Ion Ratio Lower Upper
94 100
65 34.1 25.1 37.7
66 48.1 31.6 47.4#



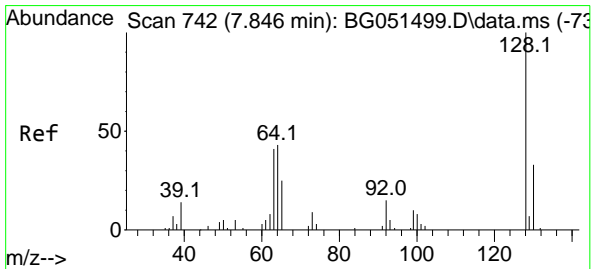
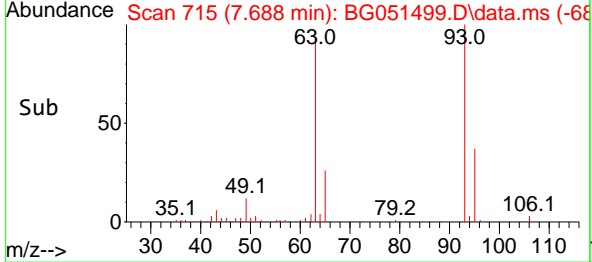
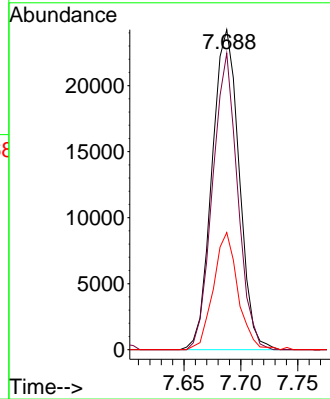
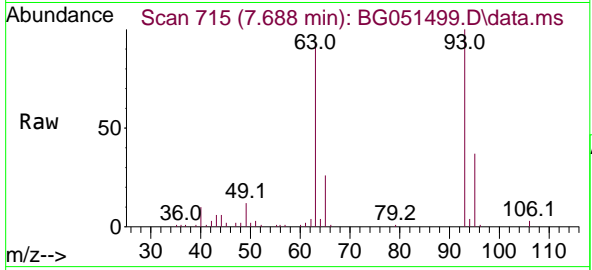


#10
 Bis(2-Chloroethyl)ether
 Concen: 19.960 ng/ul
 RT: 7.688 min Scan# 715
 Delta R.T. 0.000 min
 Lab File: BG051499.D
 Acq: 14 Dec 2021 11:28

Instrument :
 BNA_G
 ClientSampleId :
 SSTD020437

Tgt Ion: 93 Resp: 40271

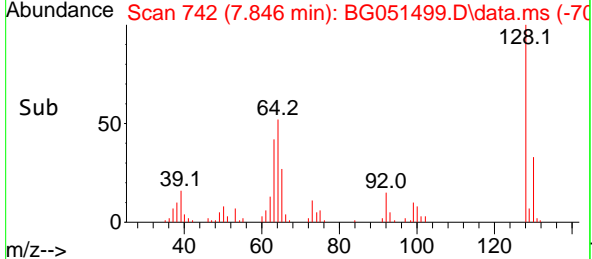
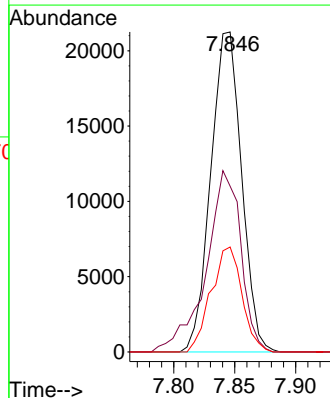
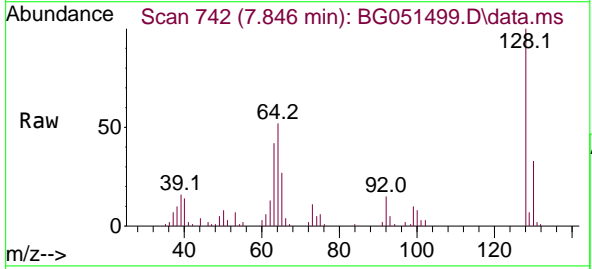
Ion	Ratio	Lower	Upper
93	100		
63	92.6	68.6	103.0
95	36.6	26.1	39.1

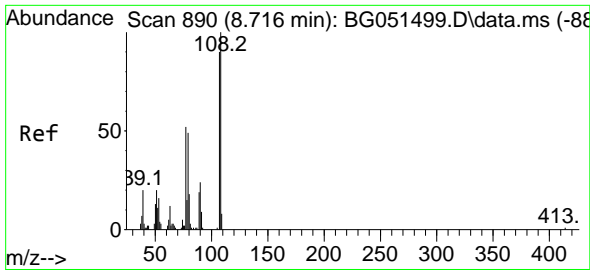


#12
 2-Chlorophenol
 Concen: 18.934 ng/ul
 RT: 7.846 min Scan# 742
 Delta R.T. 0.000 min
 Lab File: BG051499.D
 Acq: 14 Dec 2021 11:28

Tgt Ion: 128 Resp: 37387

Ion	Ratio	Lower	Upper
128	100		
64	51.8	45.3	67.9
130	32.8	27.1	40.7

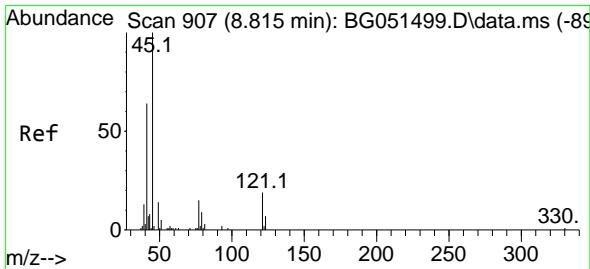
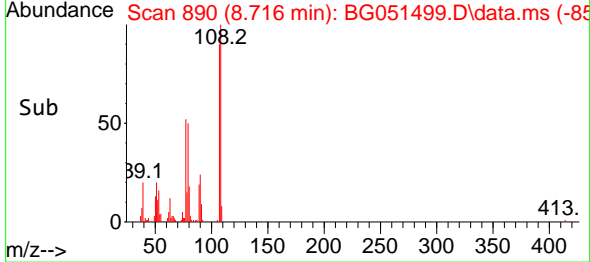
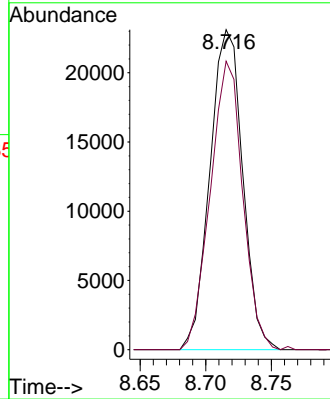
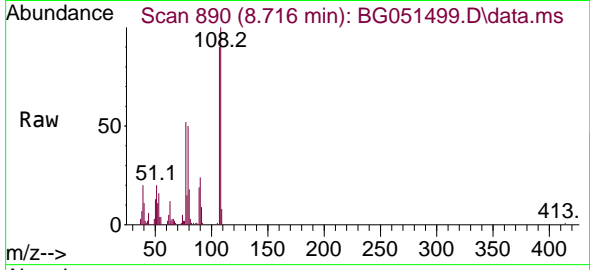




#13
 2-Methylphenol
 Concen: 19.639 ng/ul
 RT: 8.716 min Scan# 890
 Delta R.T. 0.000 min
 Lab File: BG051499.D
 Acq: 14 Dec 2021 11:28

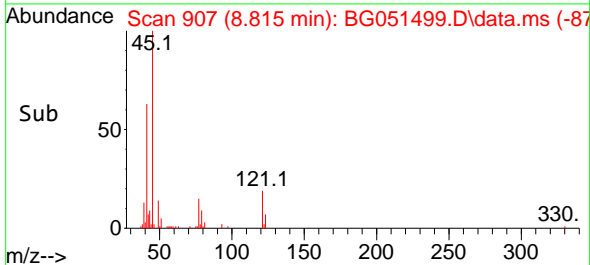
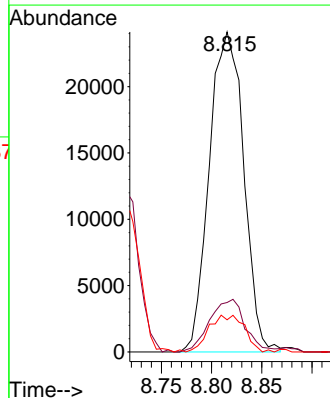
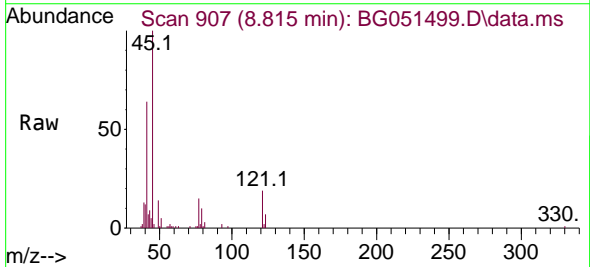
Instrument :
 BNA_G
 ClientSampleId :
 SSTD020437

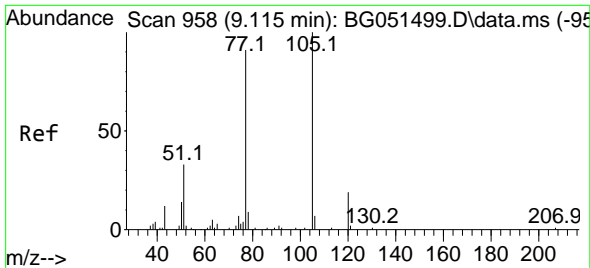
Tgt Ion:108 Resp: 40162
 Ion Ratio Lower Upper
 108 100
 107 90.2 71.8 107.6



#14
 2,2'-oxybis(1-Chloropropane)
 Concen: 20.648 ng/ul
 RT: 8.815 min Scan# 907
 Delta R.T. 0.000 min
 Lab File: BG051499.D
 Acq: 14 Dec 2021 11:28

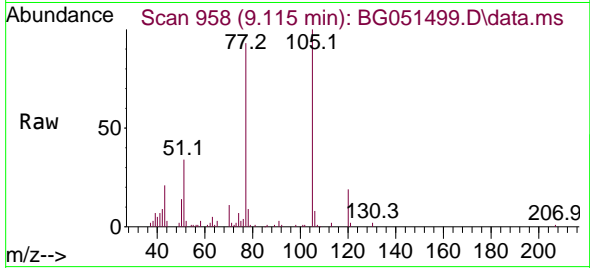
Tgt Ion: 45 Resp: 57486
 Ion Ratio Lower Upper
 45 100
 77 15.4 10.7 16.1
 79 10.1 8.5 12.7





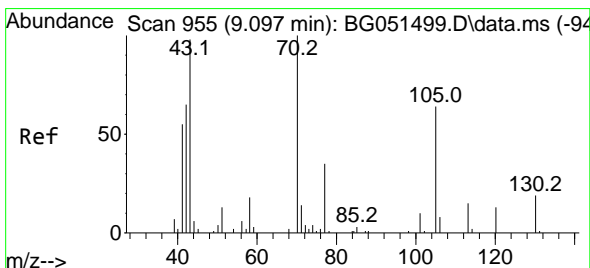
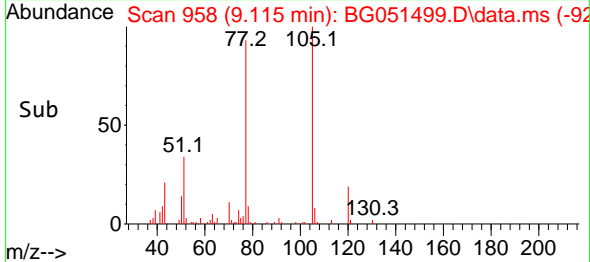
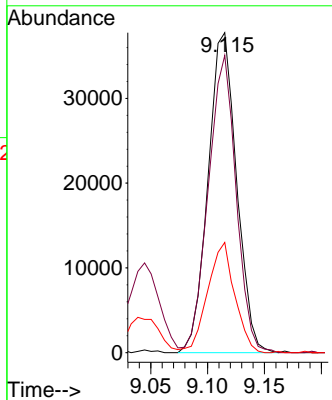
#16
 Acetophenone
 Concen: 19.534 ng/ul
 RT: 9.115 min Scan# 911
 Delta R.T. 0.000 min
 Lab File: BG051499.D
 Acq: 14 Dec 2021 11:28

Instrument :
 BNA_G
 ClientSampleId :
 SSTD020437

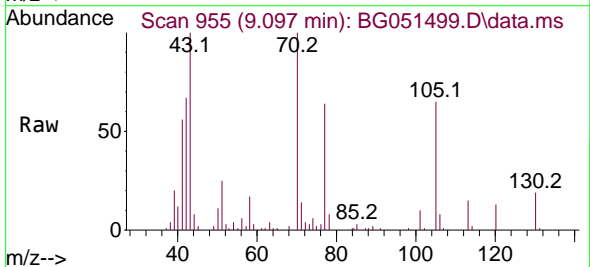


Tgt Ion: 105 Resp: 65975

Ion	Ratio	Lower	Upper
105	100		
77	92.9	67.3	100.9
51	34.4	24.0	36.0

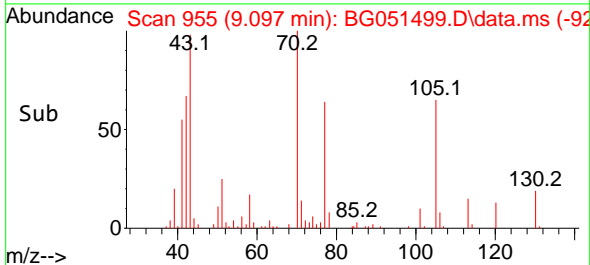
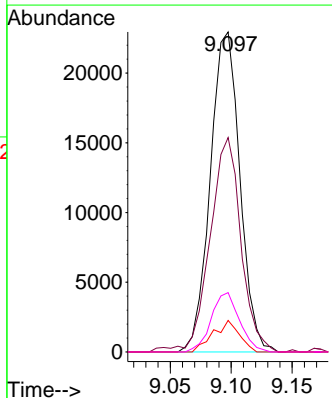


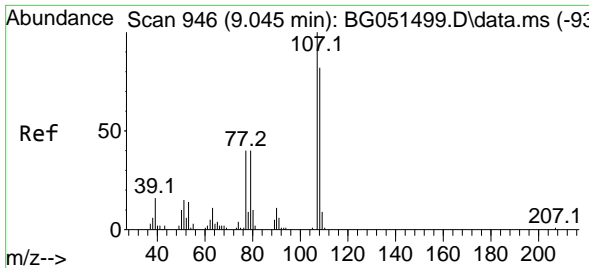
#17
 N-Nitroso-di-n-propylamine
 Concen: 18.796 ng/ul
 RT: 9.097 min Scan# 955
 Delta R.T. 0.000 min
 Lab File: BG051499.D
 Acq: 14 Dec 2021 11:28



Tgt Ion: 70 Resp: 38805

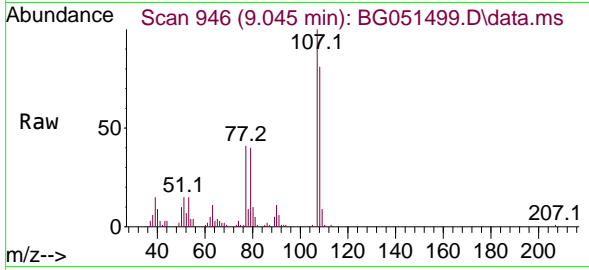
Ion	Ratio	Lower	Upper
70	100		
42	67.0	46.0	69.0
101	9.9	7.0	10.4
130	18.5	13.4	20.2



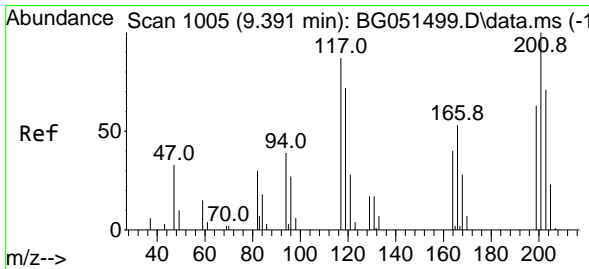
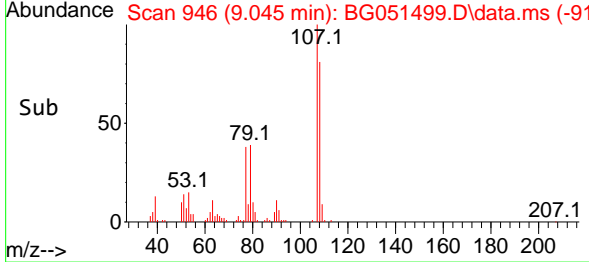
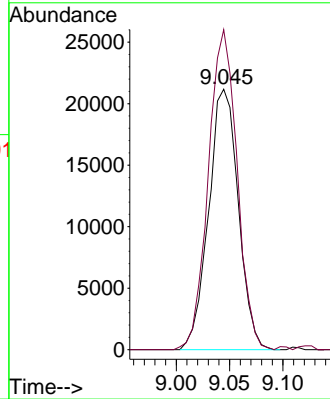


#18
 4-Methylphenol
 Concen: 18.568 ng/ul
 RT: 9.045 min Scan# 946
 Delta R.T. 0.000 min
 Lab File: BG051499.D
 Acq: 14 Dec 2021 11:28

Instrument : BNA_G
 ClientSampleId : SSTD020437

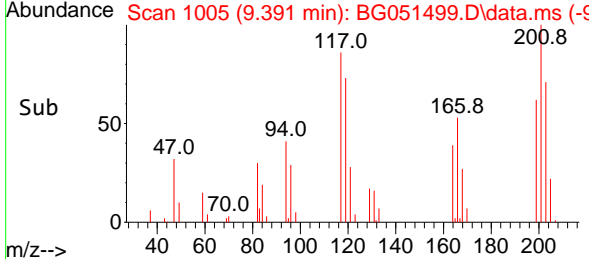
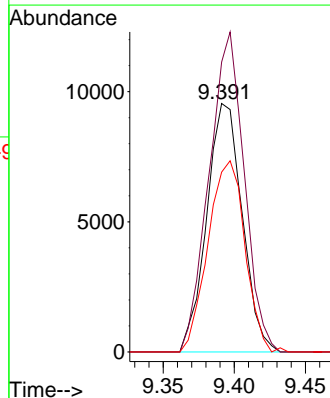
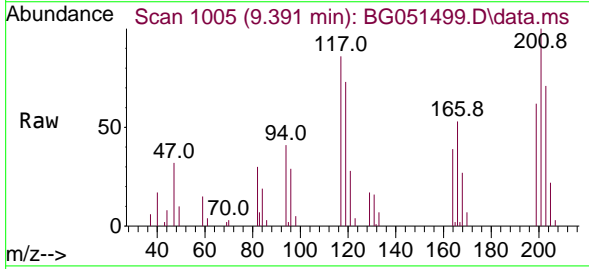


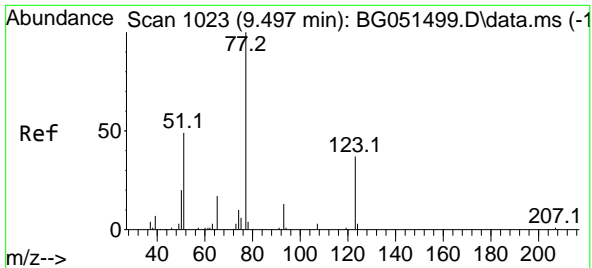
Tgt Ion:108 Resp: 41023
 Ion Ratio Lower Upper
 108 100
 107 122.8 95.0 142.4



#19
 Hexachloroethane
 Concen: 19.708 ng/ul
 RT: 9.391 min Scan# 1005
 Delta R.T. 0.000 min
 Lab File: BG051499.D
 Acq: 14 Dec 2021 11:28

Tgt Ion:117 Resp: 16558
 Ion Ratio Lower Upper
 117 100
 201 116.7 77.2 115.8#
 199 72.4 49.9 74.9





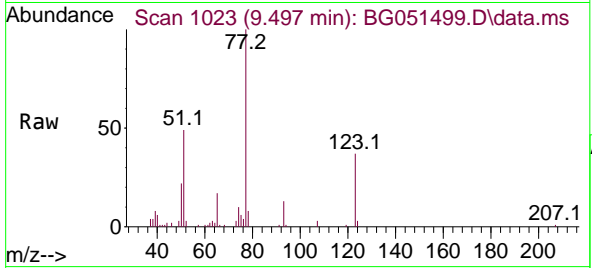
#22
 Nitrobenzene
 Concen: 22.290 ng/u1
 RT: 9.497 min Scan# 1102
 Delta R.T. 0.000 min
 Lab File: BG051499.D
 Acq: 14 Dec 2021 11:28

Instrument :

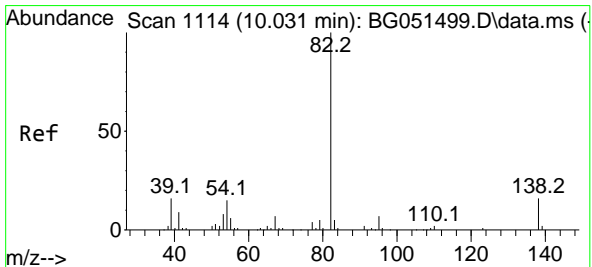
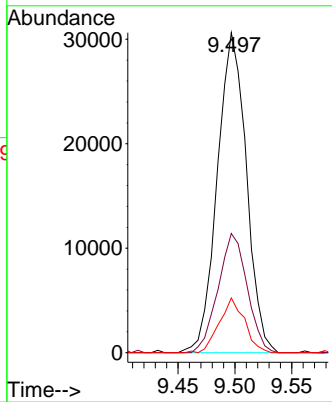
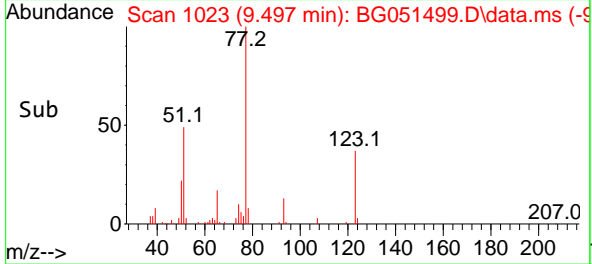
BNA_G

ClientSampleId :

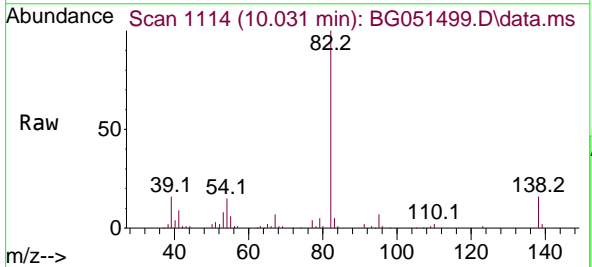
SSTD020437



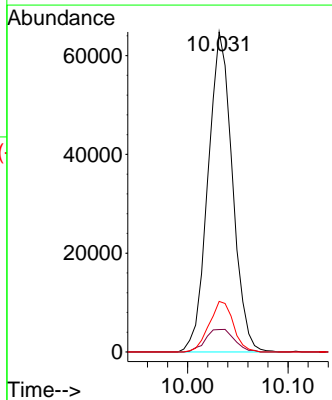
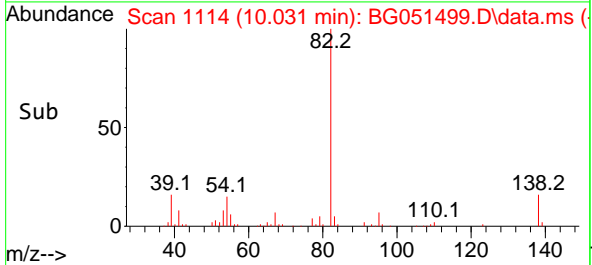
Tgt Ion: 77 Resp: 54407
 Ion Ratio Lower Upper
 77 100
 123 37.3 30.1 45.1
 65 17.1 9.6 14.4#

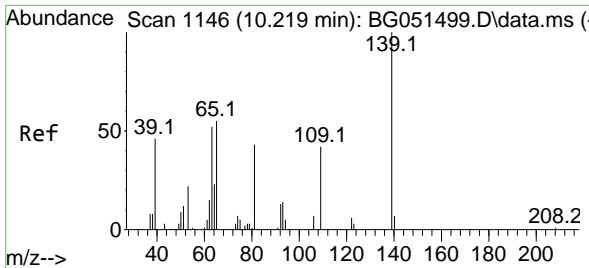


#23
 Isophorone
 Concen: 20.107 ng/u1
 RT: 10.031 min Scan# 1114
 Delta R.T. 0.000 min
 Lab File: BG051499.D
 Acq: 14 Dec 2021 11:28



Tgt Ion: 82 Resp: 109276
 Ion Ratio Lower Upper
 82 100
 95 7.0 5.6 8.4
 138 15.8 11.8 17.8





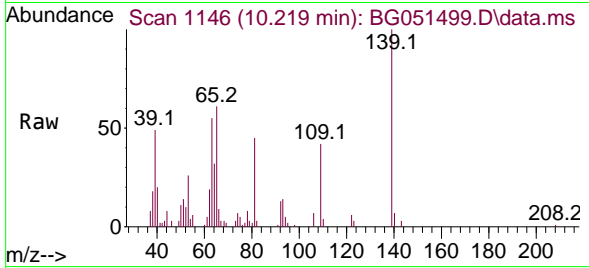
#25
 2-Nitrophenol
 Concen: 21.706 ng/u1
 RT: 10.219 min Scan# 1146
 Delta R.T. 0.000 min
 Lab File: BG051499.D
 Acq: 14 Dec 2021 11:28

Instrument :

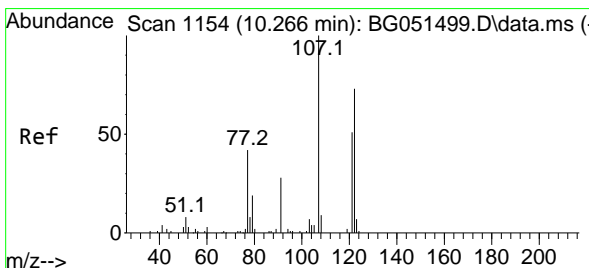
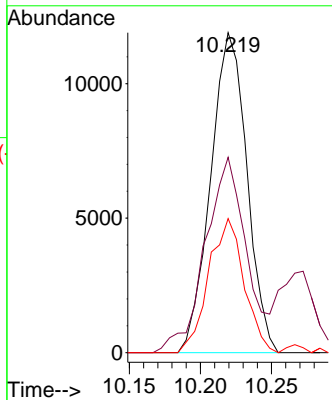
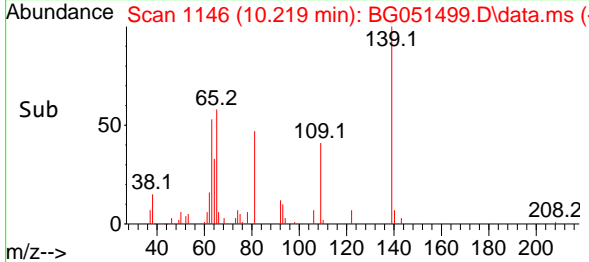
BNA_G

ClientSampleId :

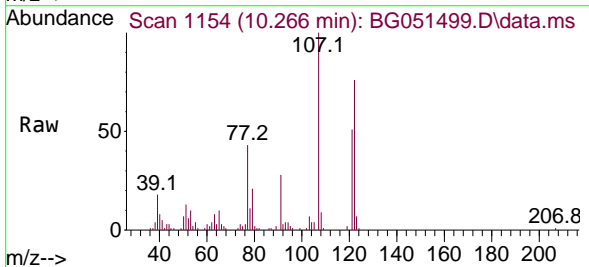
SSTD020437



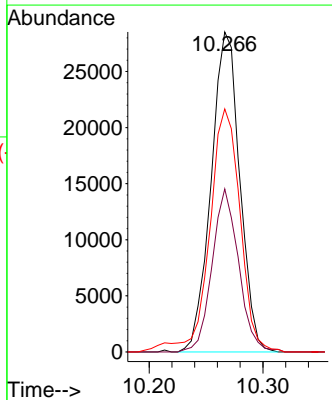
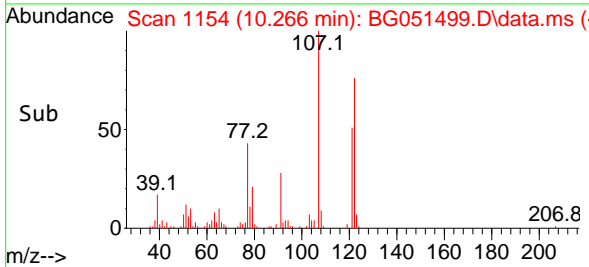
Tgt Ion:139 Resp: 21117
 Ion Ratio Lower Upper
 139 100
 65 61.1 48.0 72.0
 109 41.9 28.6 42.8

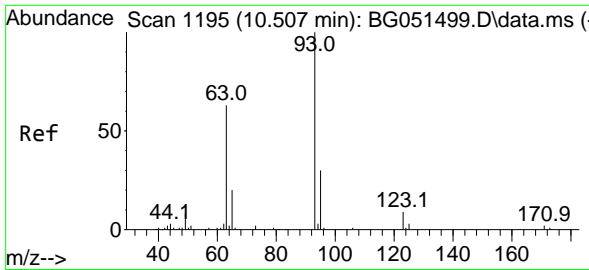


#26
 2,4-Dimethylphenol
 Concen: 18.840 ng/u1
 RT: 10.266 min Scan# 1154
 Delta R.T. 0.000 min
 Lab File: BG051499.D
 Acq: 14 Dec 2021 11:28



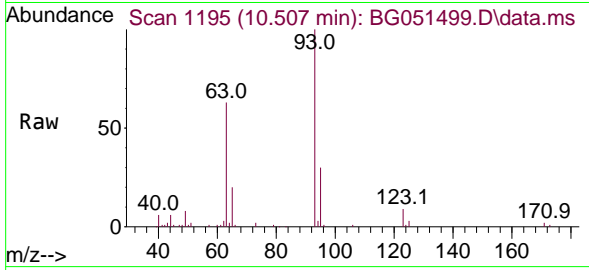
Tgt Ion:107 Resp: 50009
 Ion Ratio Lower Upper
 107 100
 121 50.9 39.3 58.9
 122 75.9 63.7 95.5





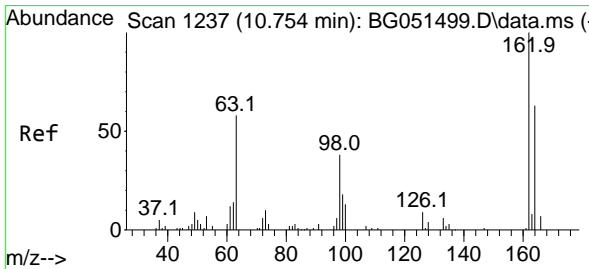
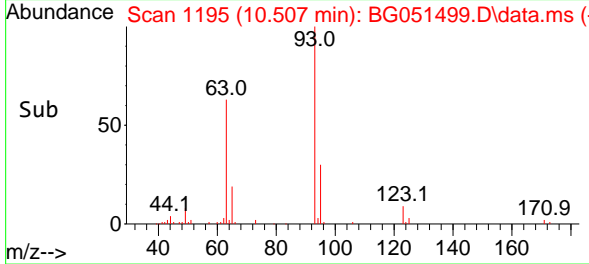
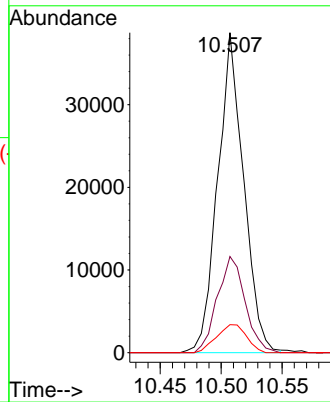
#27
 Bis(2-Chloroethoxy)methane
 Concen: 19.393 ng/ul
 RT: 10.507 min Scan# 1195
 Delta R.T. 0.000 min
 Lab File: BG051499.D
 Acq: 14 Dec 2021 11:28

Instrument : BNA_G
 ClientSampleId : SSTD020437

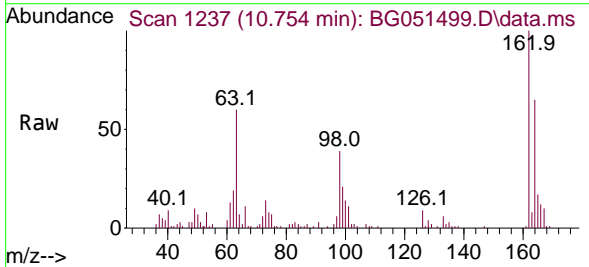


Tgt Ion: 93 Resp: 57208

Ion	Ratio	Lower	Upper
93	100		
95	30.0	26.5	39.7
123	8.8	8.1	12.1

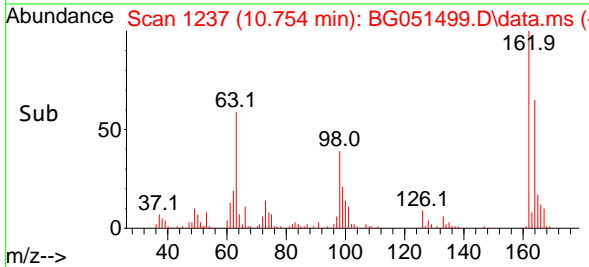
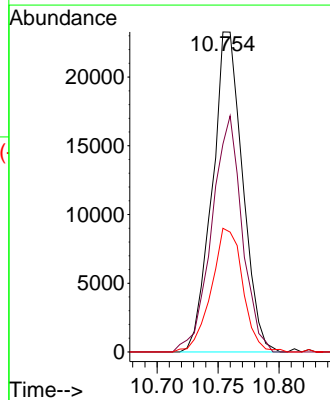


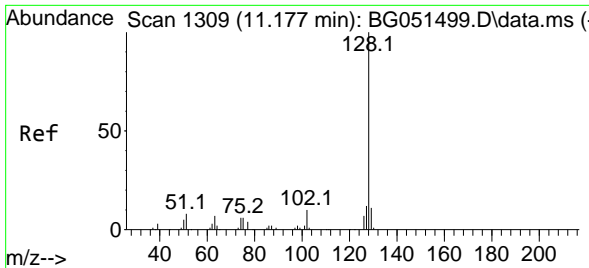
#29
 2,4-Dichlorophenol
 Concen: 19.697 ng/ul
 RT: 10.754 min Scan# 1237
 Delta R.T. 0.000 min
 Lab File: BG051499.D
 Acq: 14 Dec 2021 11:28



Tgt Ion: 162 Resp: 40334

Ion	Ratio	Lower	Upper
162	100		
164	65.0	49.4	74.0
98	38.6	30.4	45.6

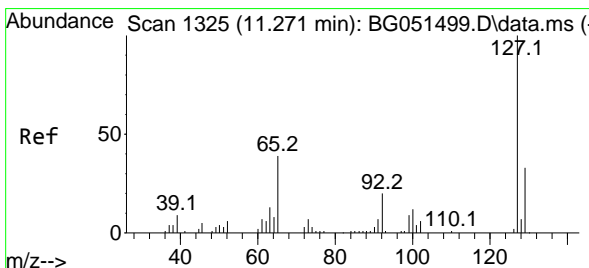
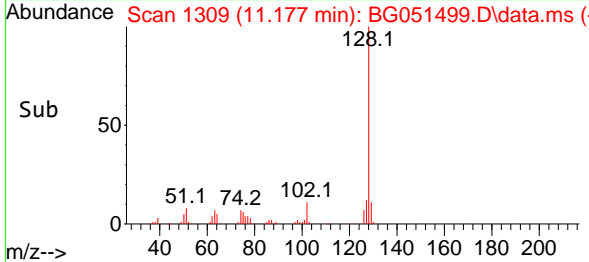
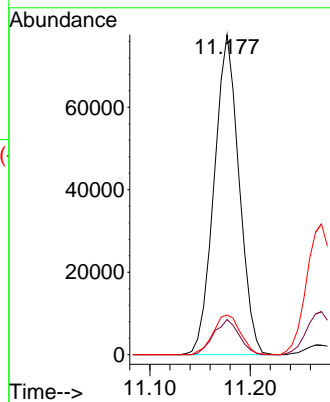
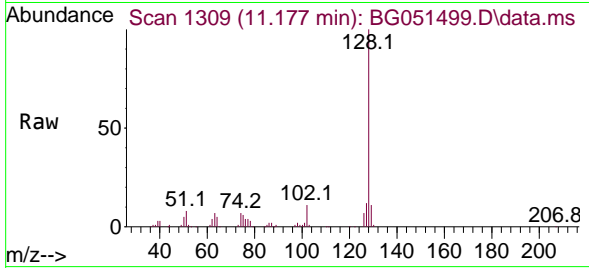




#30
 Naphthalene
 Concen: 20.461 ng/uI
 RT: 11.177 min Scan# 1111
 Delta R.T. 0.000 min
 Lab File: BG051499.D
 Acq: 14 Dec 2021 11:28

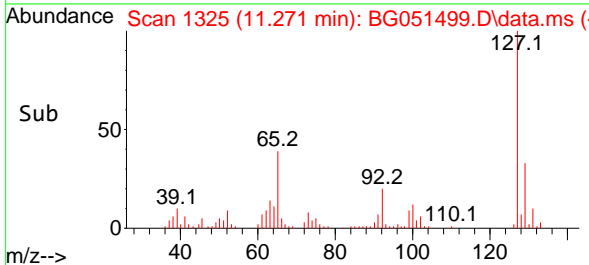
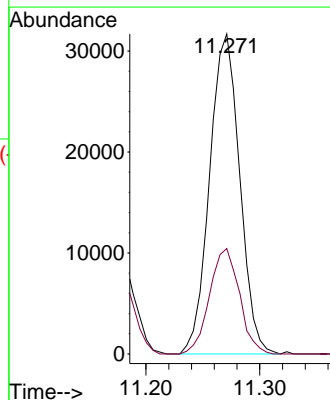
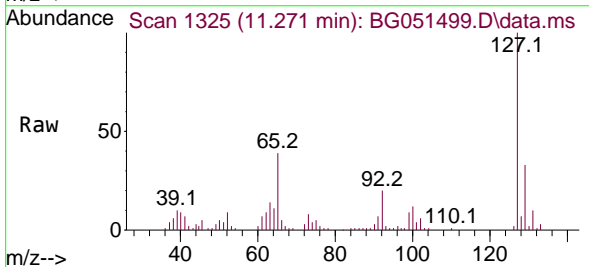
Instrument :
 BNA_G
 ClientSampleId :
 SSTD020437

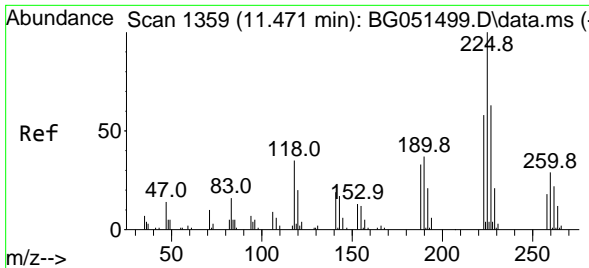
Tgt Ion:128 Resp: 134010
 Ion Ratio Lower Upper
 128 100
 129 11.0 8.5 12.7
 127 12.4 11.8 17.6



#32
 4-Chloroaniline
 Concen: 20.246 ng/uI
 RT: 11.271 min Scan# 1325
 Delta R.T. 0.000 min
 Lab File: BG051499.D
 Acq: 14 Dec 2021 11:28

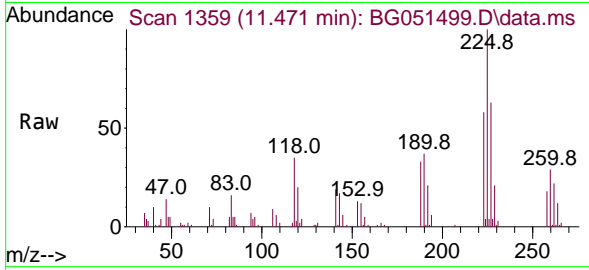
Tgt Ion:127 Resp: 58313
 Ion Ratio Lower Upper
 127 100
 129 32.9 26.2 39.2



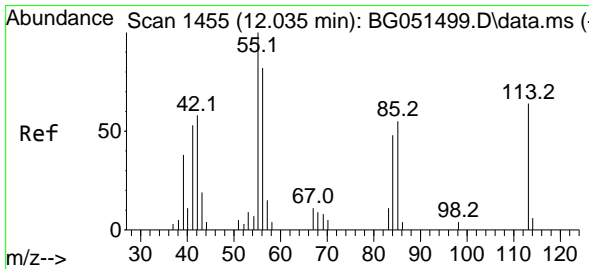
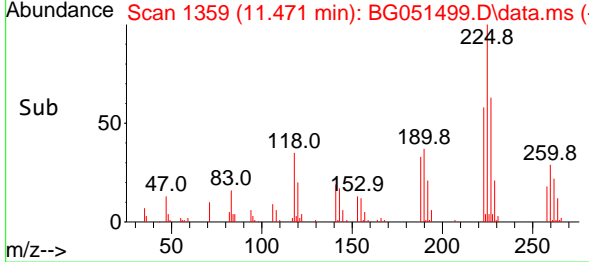
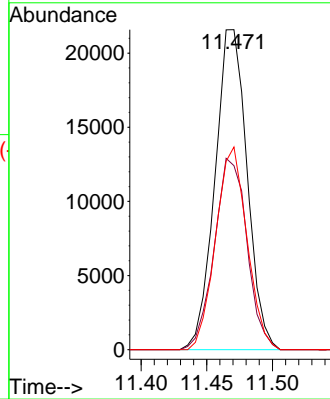


#33
 Hexachlorobutadiene
 Concen: 21.766 ng/u1
 RT: 11.471 min Scan# 11
 Delta R.T. 0.000 min
 Lab File: BG051499.D
 Acq: 14 Dec 2021 11:28

Instrument :
 BNA_G
 ClientSampleId :
 SSTD020437

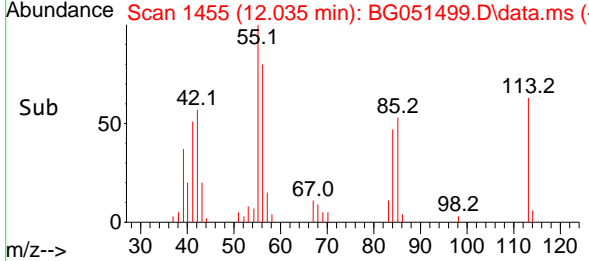
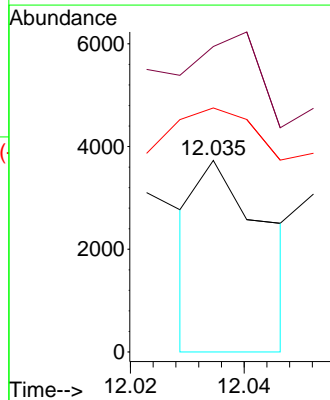
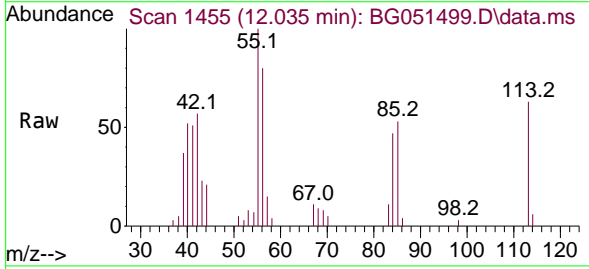


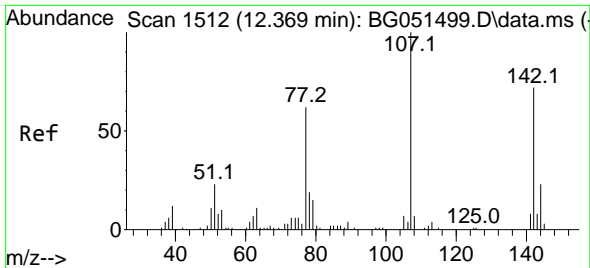
Tgt Ion:225 Resp: 36795
 Ion Ratio Lower Upper
 225 100
 223 57.5 50.6 75.8
 227 63.4 49.8 74.8



#34
 Caprolactam
 Concen: 5.049 ng/u1
 RT: 12.035 min Scan# 1455
 Delta R.T. 0.000 min
 Lab File: BG051499.D
 Acq: 14 Dec 2021 11:28

Tgt Ion:113 Resp: 3108
 Ion Ratio Lower Upper
 113 100
 55 159.4 147.0 220.6
 56 127.4 109.2 163.8





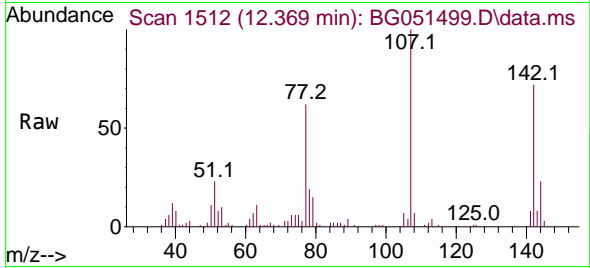
#35
 4-Chloro-3-methylphenol
 Concen: 19.718 ng/ul
 RT: 12.369 min Scan# 1512
 Delta R.T. 0.000 min
 Lab File: BG051499.D
 Acq: 14 Dec 2021 11:28

Instrument :

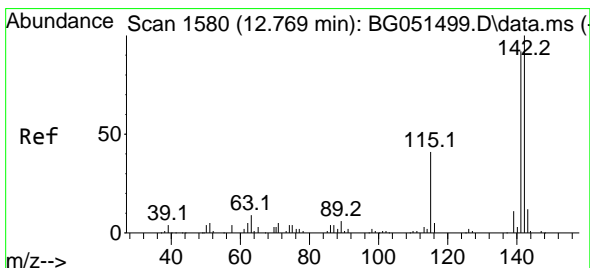
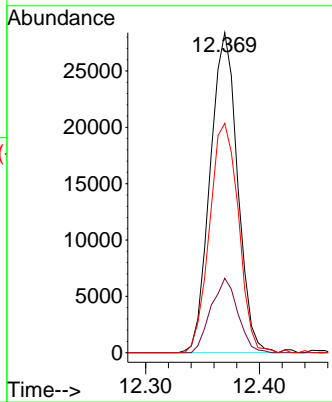
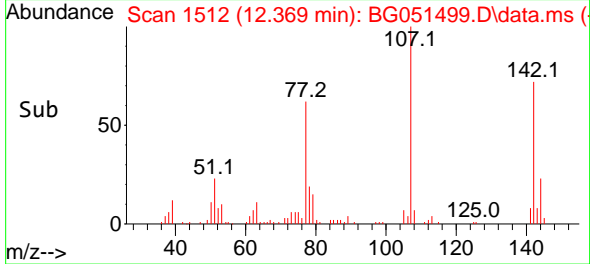
BNA_G

ClientSampleId :

SSTD020437

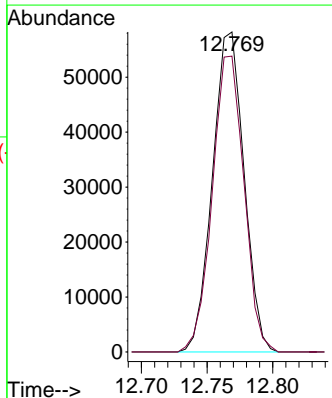
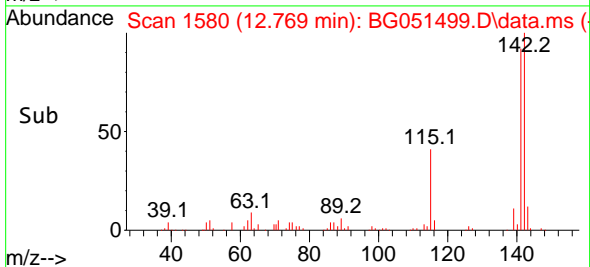
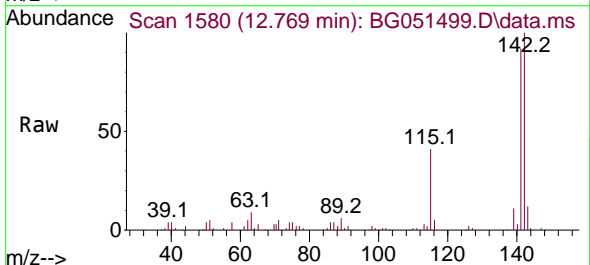


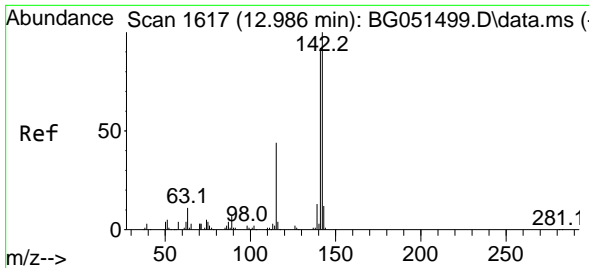
Tgt Ion:107 Resp: 47456
 Ion Ratio Lower Upper
 107 100
 144 23.2 19.8 29.6
 142 71.6 56.2 84.4



#36
 2-Methylnaphthalene
 Concen: 20.194 ng/ul
 RT: 12.769 min Scan# 1580
 Delta R.T. 0.000 min
 Lab File: BG051499.D
 Acq: 14 Dec 2021 11:28

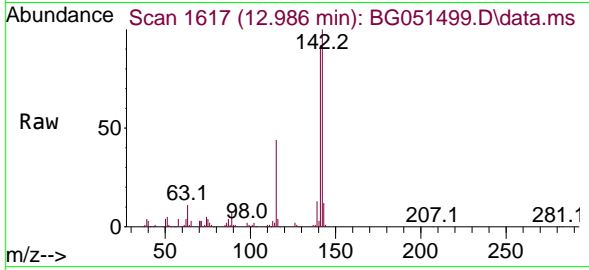
Tgt Ion:142 Resp: 97433
 Ion Ratio Lower Upper
 142 100
 141 92.5 73.3 109.9



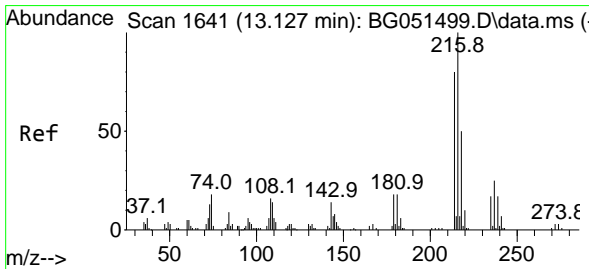
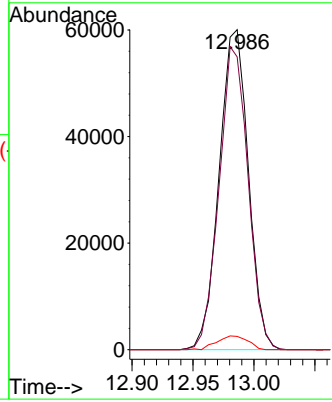
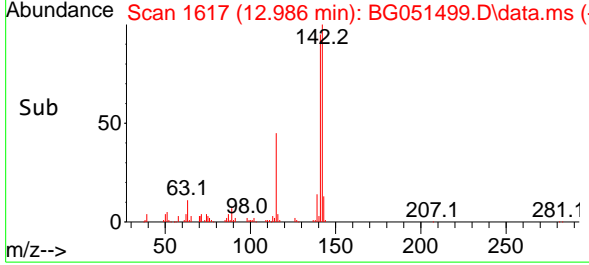


#37
 1-Methylnaphthalene
 Concen: 20.226 ng/ul
 RT: 12.986 min Scan# 1617
 Delta R.T. 0.000 min
 Lab File: BG051499.D
 Acq: 14 Dec 2021 11:28

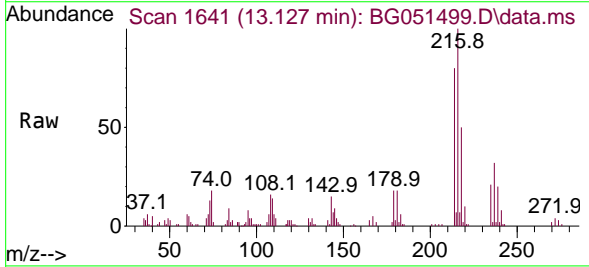
Instrument :
 BNA_G
 ClientSampleId :
 SSTD020437



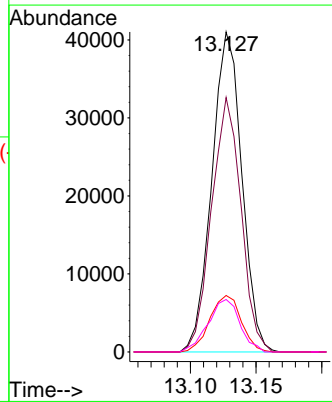
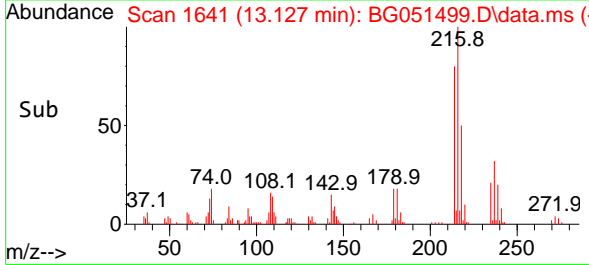
Tgt Ion:142 Resp: 100123
 Ion Ratio Lower Upper
 142 100
 141 91.5 77.8 116.8
 116 4.1 3.3 4.9

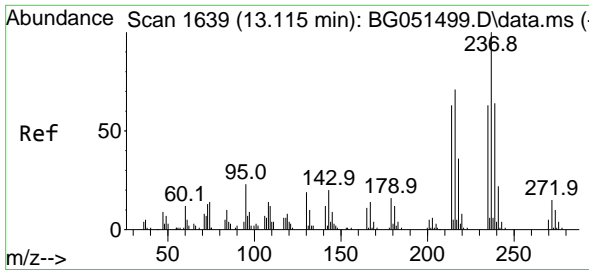


#39
 1,2,4,5-Tetrachlorobenzene
 Concen: 21.149 ng/ul
 RT: 13.127 min Scan# 1641
 Delta R.T. 0.000 min
 Lab File: BG051499.D
 Acq: 14 Dec 2021 11:28



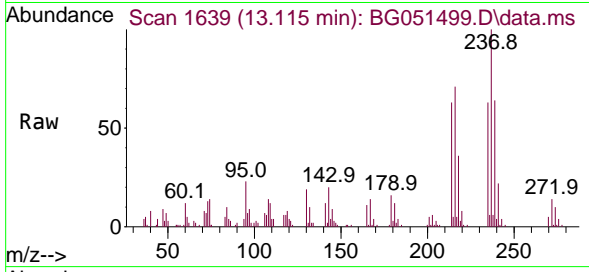
Tgt Ion:216 Resp: 65129
 Ion Ratio Lower Upper
 216 100
 214 79.5 61.0 91.4
 179 17.7 16.2 24.2
 108 16.4 13.1 19.7



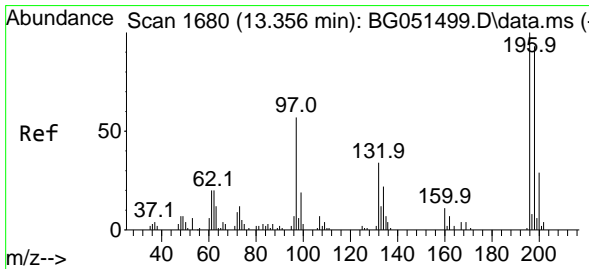
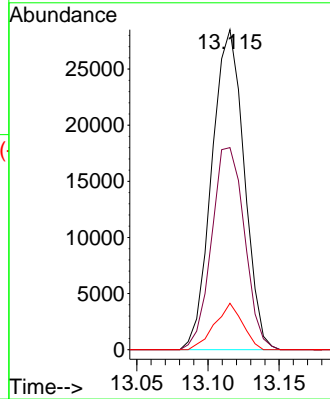
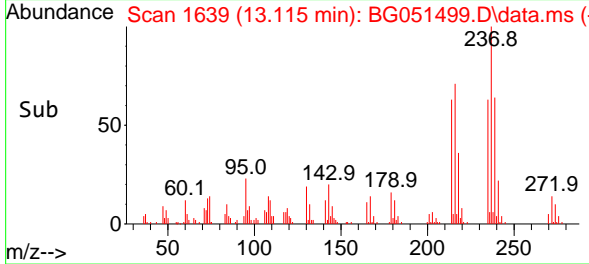


#40
 Hexachlorocyclopentadiene
 Concen: 20.613 ng/ul
 RT: 13.115 min Scan# 1639
 Delta R.T. 0.000 min
 Lab File: BG051499.D
 Acq: 14 Dec 2021 11:28

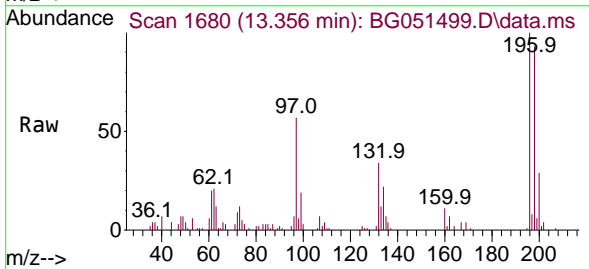
Instrument : BNA_G
 ClientSampleId : SSTD020437



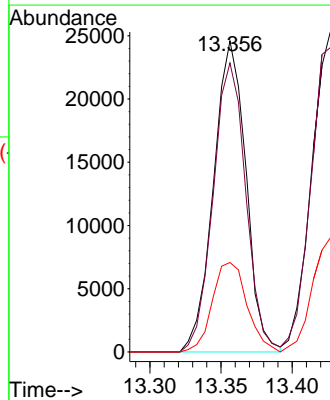
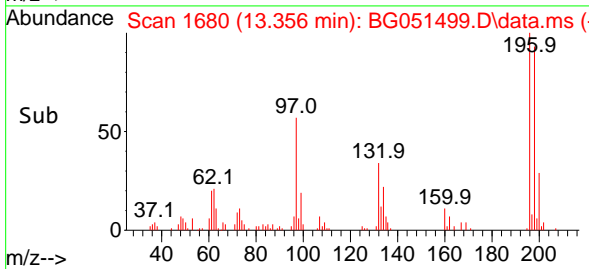
Tgt Ion:237 Resp: 45114
 Ion Ratio Lower Upper
 237 100
 235 63.2 49.4 74.0
 272 14.5 11.1 16.7

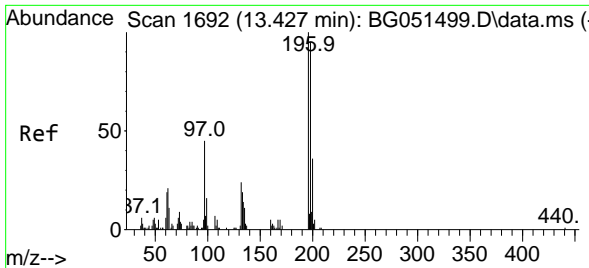


#41
 2,4,6-Trichlorophenol
 Concen: 21.037 ng/ul
 RT: 13.356 min Scan# 1680
 Delta R.T. 0.000 min
 Lab File: BG051499.D
 Acq: 14 Dec 2021 11:28



Tgt Ion:196 Resp: 38947
 Ion Ratio Lower Upper
 196 100
 198 92.9 74.3 111.5
 200 28.7 23.8 35.6

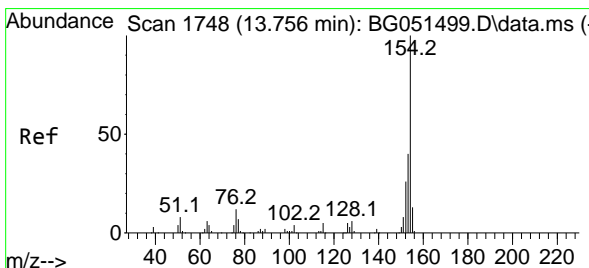
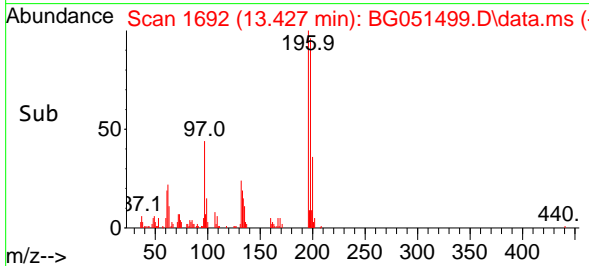
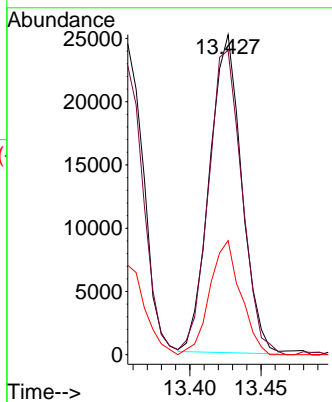
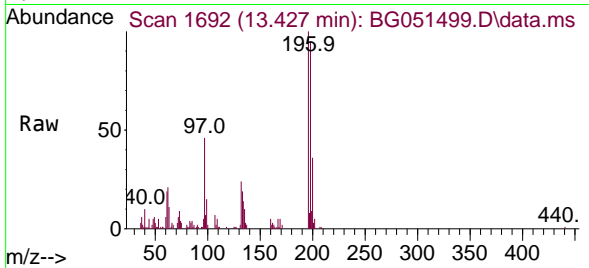




#42
 2,4,5-Trichlorophenol
 Concen: 20.261 ng/ul
 RT: 13.427 min Scan# 1692
 Delta R.T. 0.000 min
 Lab File: BG051499.D
 Acq: 14 Dec 2021 11:28

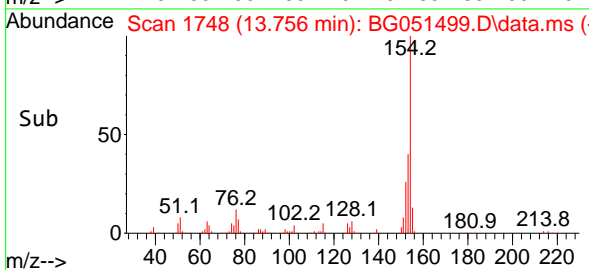
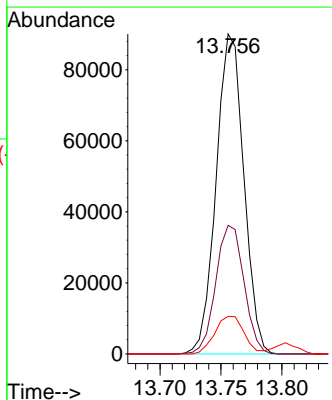
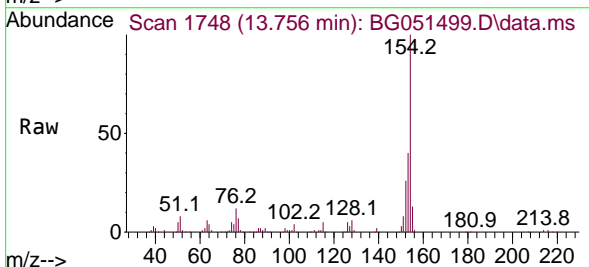
Instrument : BNA_G
 ClientSampleId : SSTD020437

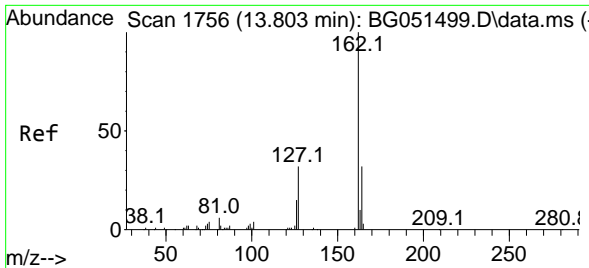
Tgt Ion	Resp	Ion Ratio	Lower	Upper
196	39710	100		
198		95.1	77.0	115.4
200		35.7	25.4	38.2



#43
 1,1'-Biphenyl
 Concen: 21.097 ng/ul
 RT: 13.756 min Scan# 1748
 Delta R.T. 0.000 min
 Lab File: BG051499.D
 Acq: 14 Dec 2021 11:28

Tgt Ion	Resp	Ion Ratio	Lower	Upper
154	142254	100		
153		40.2	34.5	51.7
76		11.7	13.1	19.7#



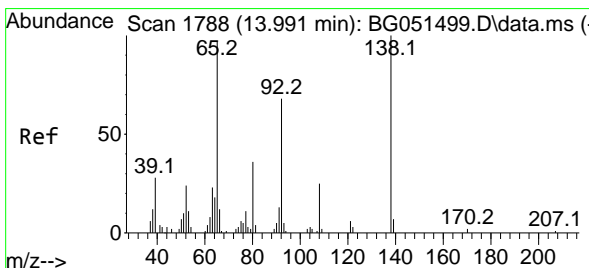
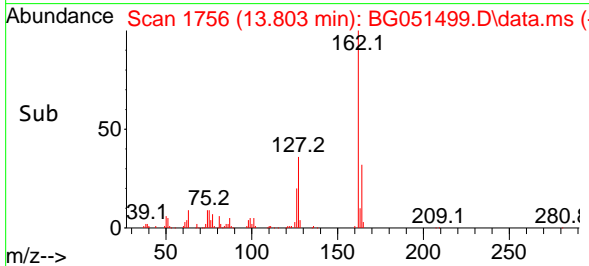
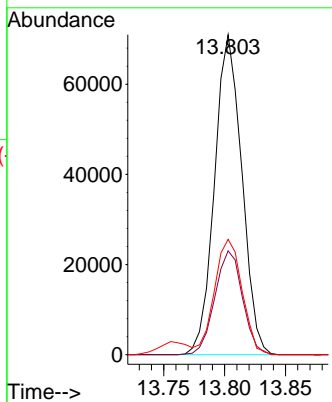
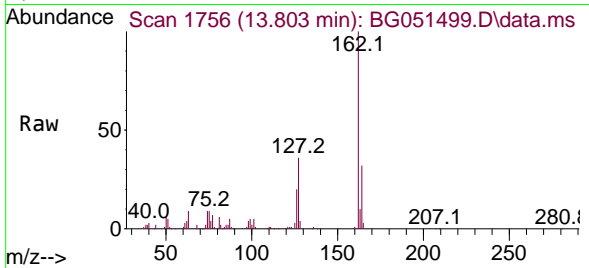


#44
 2-Chloronaphthalene
 Concen: 21.061 ng/uI
 RT: 13.803 min Scan# 1756
 Delta R.T. 0.000 min
 Lab File: BG051499.D
 Acq: 14 Dec 2021 11:28

Instrument : BNA_G
 ClientSampleId : SSTD020437

Tgt Ion:162 Resp: 110478

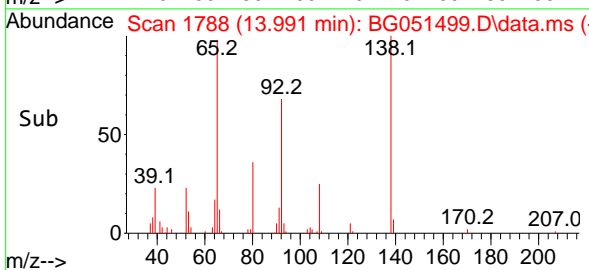
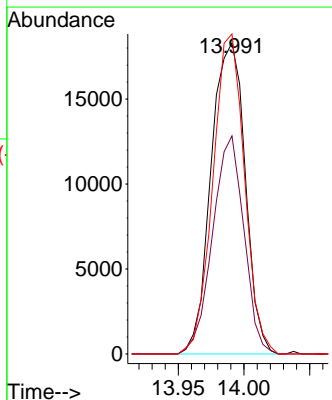
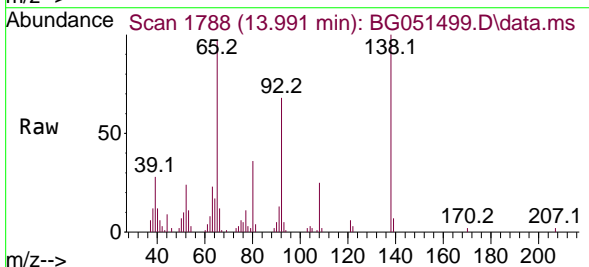
Ion	Ratio	Lower	Upper
162	100		
164	32.4	26.1	39.1
127	36.1	31.0	46.4

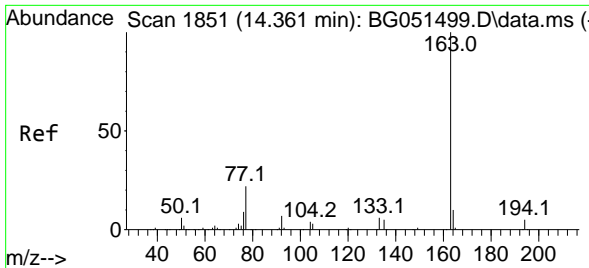


#45
 2-Nitroaniline
 Concen: 22.723 ng/uI
 RT: 13.991 min Scan# 1788
 Delta R.T. 0.000 min
 Lab File: BG051499.D
 Acq: 14 Dec 2021 11:28

Tgt Ion: 65 Resp: 33060

Ion	Ratio	Lower	Upper
65	100		
92	70.1	53.0	79.4
138	102.9	67.4	101.0#



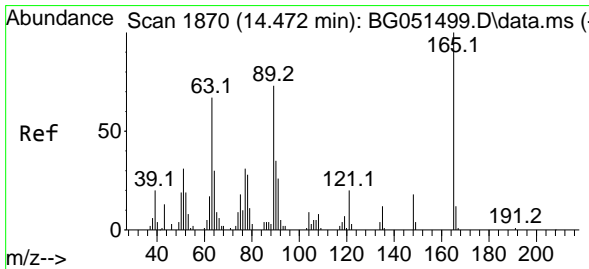
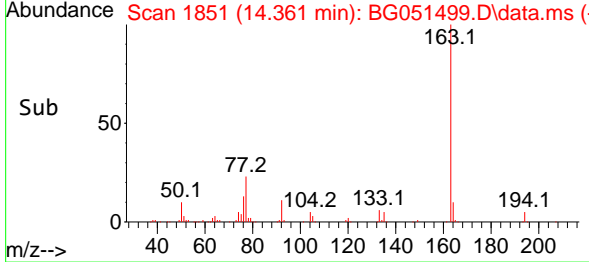
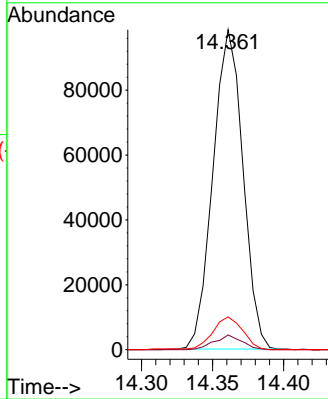
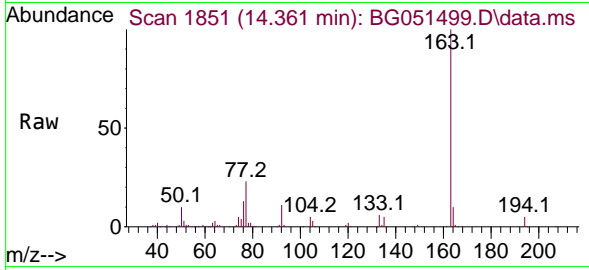


#47
 Dimethylphthalate
 Concen: 20.432 ng/ul
 RT: 14.361 min Scan# 1851
 Delta R.T. 0.000 min
 Lab File: BG051499.D
 Acq: 14 Dec 2021 11:28

Instrument : BNA_G
 ClientSampleId : SSTD020437

Tgt Ion:163 Resp: 144230

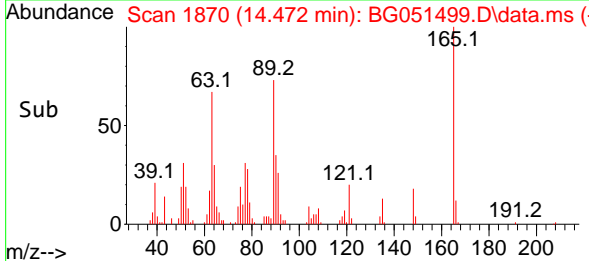
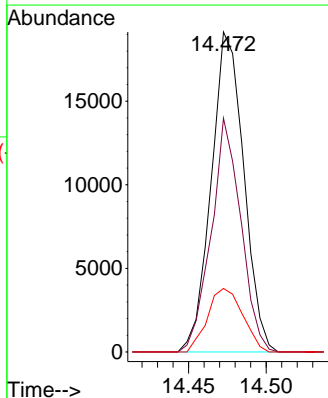
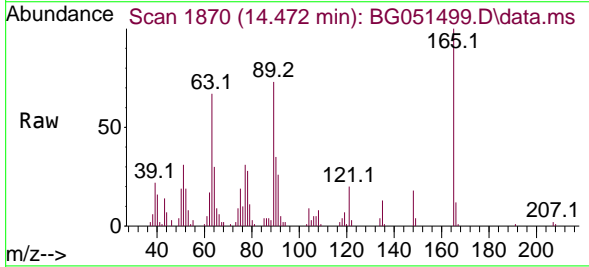
Ion	Ratio	Lower	Upper
163	100		
194	4.6	3.0	4.4#
164	10.3	8.2	12.4

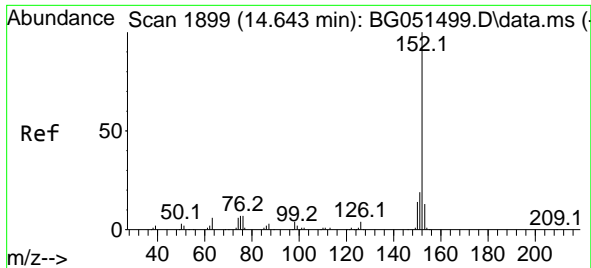


#48
 2,6-Dinitrotoluene
 Concen: 23.787 ng/ul
 RT: 14.472 min Scan# 1870
 Delta R.T. 0.000 min
 Lab File: BG051499.D
 Acq: 14 Dec 2021 11:28

Tgt Ion:165 Resp: 27882

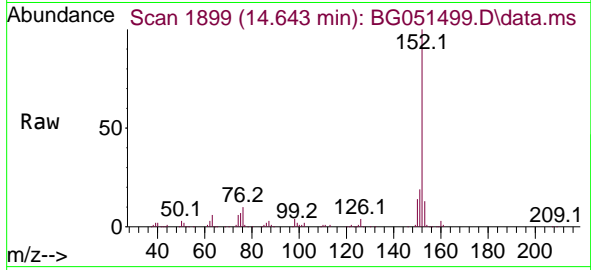
Ion	Ratio	Lower	Upper
165	100		
89	73.0	57.4	86.0
121	19.8	18.8	28.2



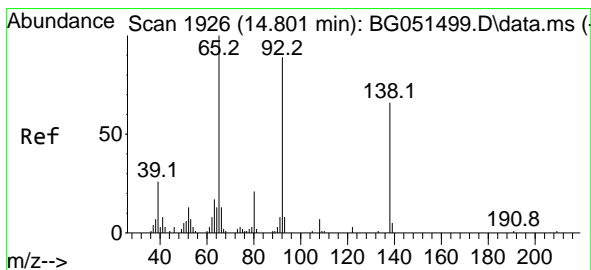
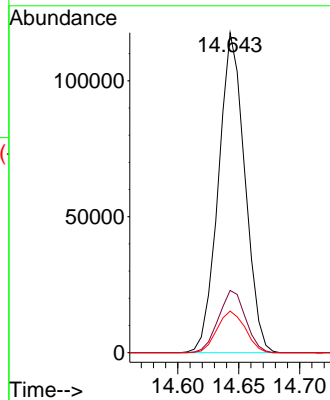
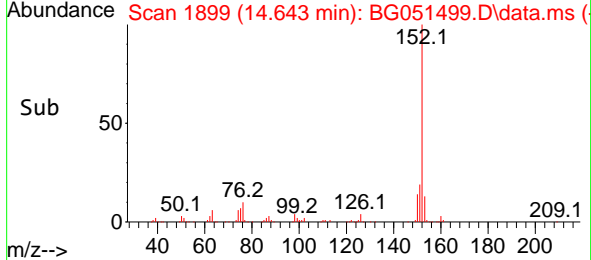


#50
 Acenaphthylene
 Concen: 20.223 ng/uI
 RT: 14.643 min Scan# 1899
 Delta R.T. 0.000 min
 Lab File: BG051499.D
 Acq: 14 Dec 2021 11:28

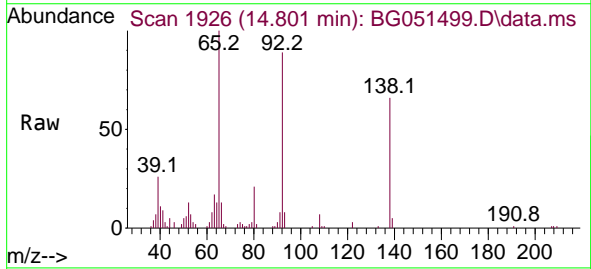
Instrument : BNA_G
 ClientSampleId : SSTD020437



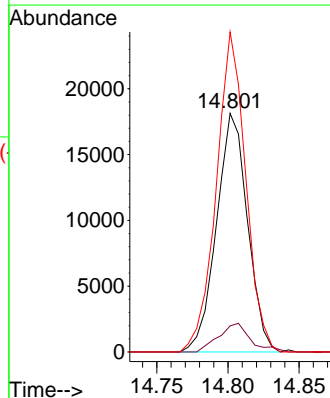
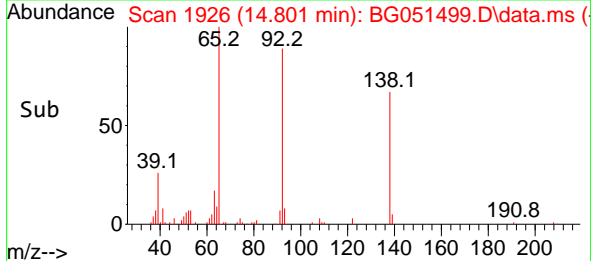
Tgt Ion:152 Resp: 177467
 Ion Ratio Lower Upper
 152 100
 151 19.4 17.4 26.0
 153 13.0 10.3 15.5

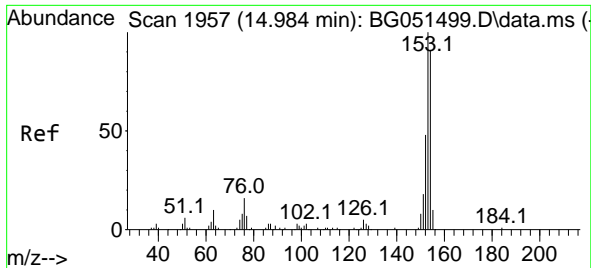


#51
 3-Nitroaniline
 Concen: 23.673 ng/uI
 RT: 14.801 min Scan# 1926
 Delta R.T. 0.000 min
 Lab File: BG051499.D
 Acq: 14 Dec 2021 11:28



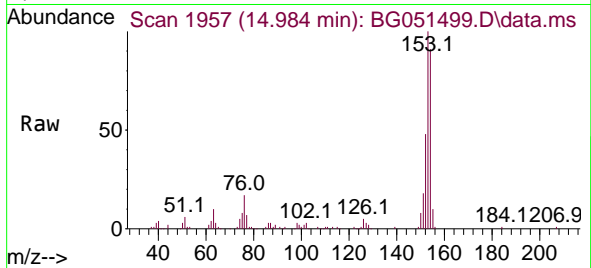
Tgt Ion:138 Resp: 27485
 Ion Ratio Lower Upper
 138 100
 108 10.9 8.8 13.2
 92 134.1 98.0 147.0



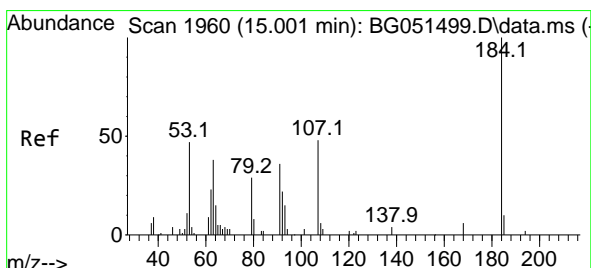
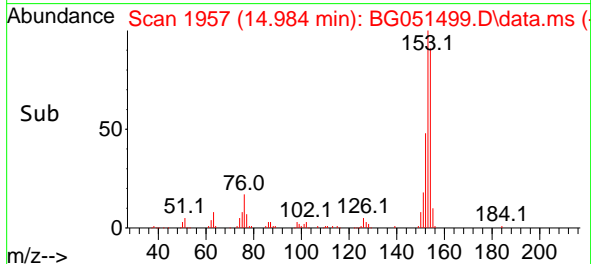
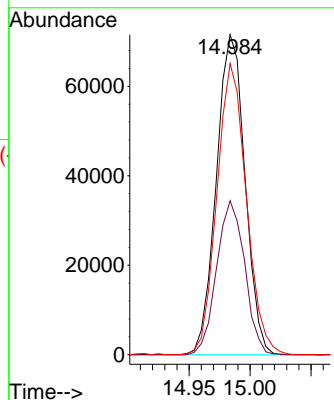


#52
 Acenaphthene
 Concen: 20.123 ng/uI
 RT: 14.984 min Scan# 1957
 Delta R.T. 0.000 min
 Lab File: BG051499.D
 Acq: 14 Dec 2021 11:28

Instrument :
 BNA_G
 ClientSampleId :
 SSTD020437

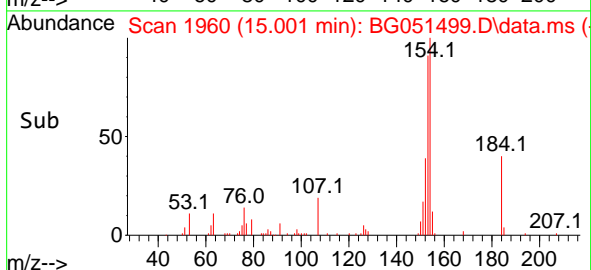
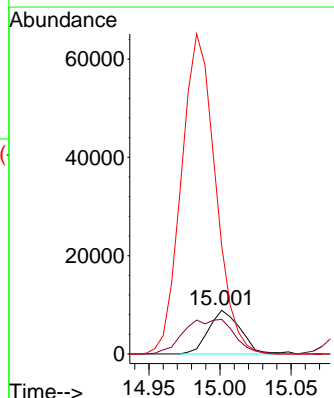
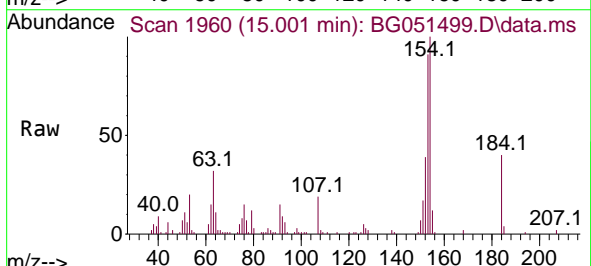


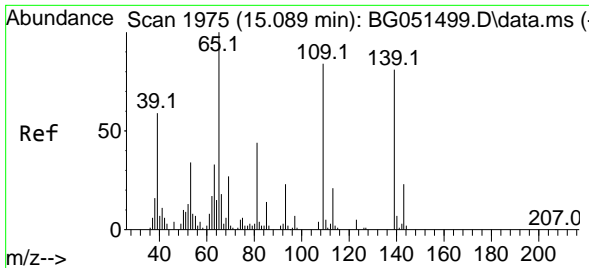
Tgt Ion:153 Resp: 116638
 Ion Ratio Lower Upper
 153 100
 152 48.1 36.5 54.7
 154 91.0 65.8 98.6



#53
 2,4-Dinitrophenol
 Concen: 21.760 ng/uI
 RT: 15.001 min Scan# 1960
 Delta R.T. 0.000 min
 Lab File: BG051499.D
 Acq: 14 Dec 2021 11:28

Tgt Ion:184 Resp: 13763
 Ion Ratio Lower Upper
 184 100
 63 79.2 66.2 99.2
 154 249.1 53.6 80.4#

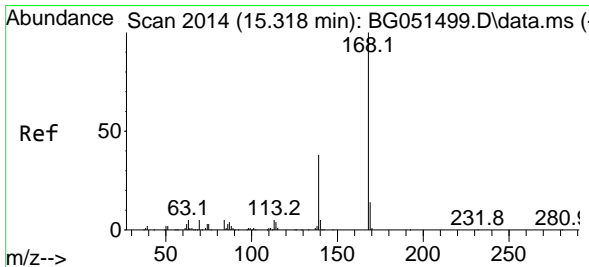
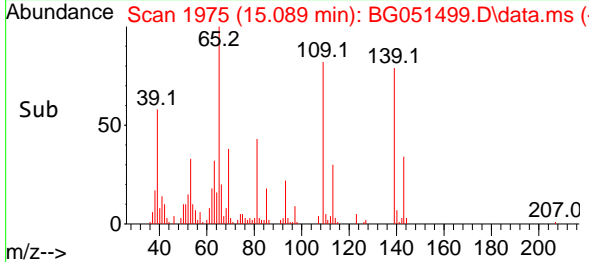
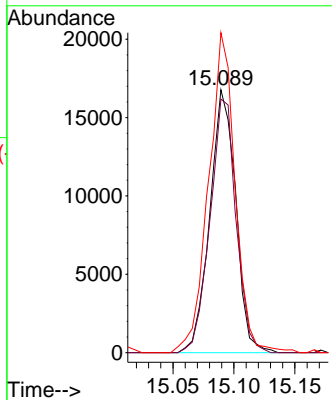
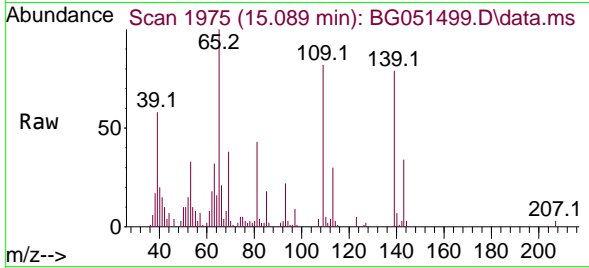




#55
 4-Nitrophenol
 Concen: 21.987 ng/u1
 RT: 15.089 min Scan# 1975
 Delta R.T. 0.000 min
 Lab File: BG051499.D
 Acq: 14 Dec 2021 11:28

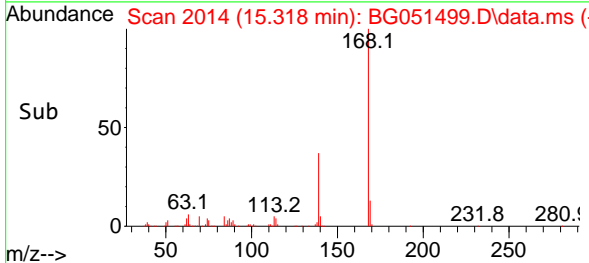
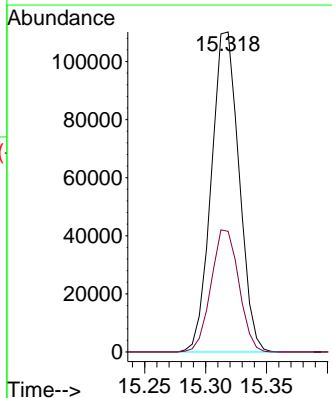
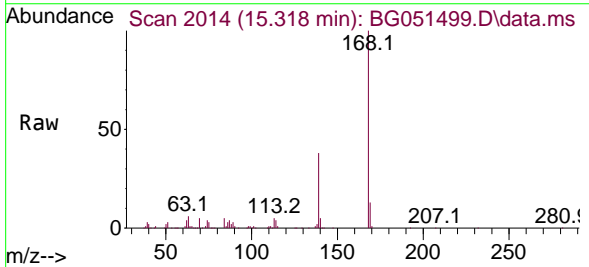
Instrument : BNA_G
 ClientSampleId : SSTD020437

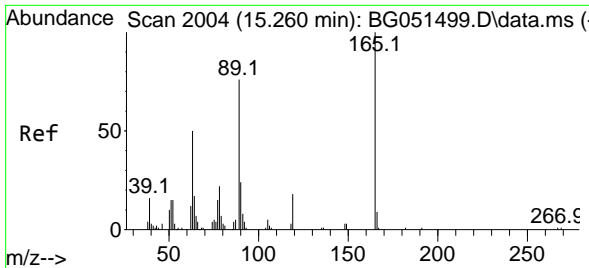
Tgt Ion:109 Resp: 24791
 Ion Ratio Lower Upper
 109 100
 139 96.4 88.7 133.1
 65 121.7 113.6 170.4



#56
 Dibenzofuran
 Concen: 20.707 ng/u1
 RT: 15.318 min Scan# 2014
 Delta R.T. 0.000 min
 Lab File: BG051499.D
 Acq: 14 Dec 2021 11:28

Tgt Ion:168 Resp: 174485
 Ion Ratio Lower Upper
 168 100
 139 37.7 31.2 46.8

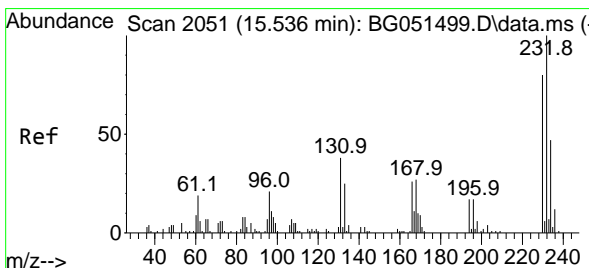
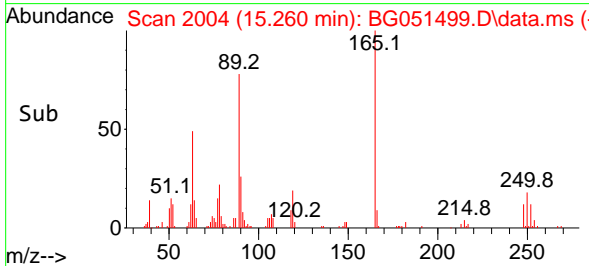
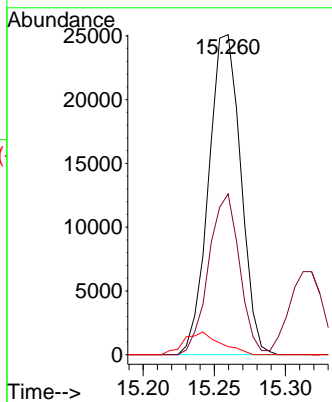
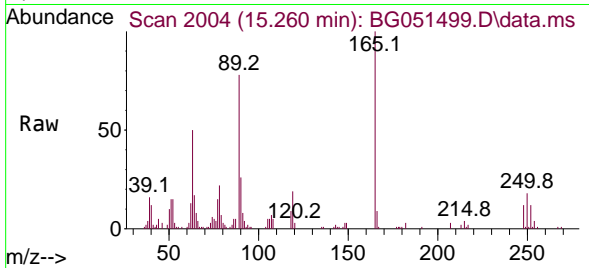




#57
 2,4-Dinitrotoluene
 Concen: 24.431 ng/ul
 RT: 15.260 min Scan# 2004
 Delta R.T. 0.000 min
 Lab File: BG051499.D
 Acq: 14 Dec 2021 11:28

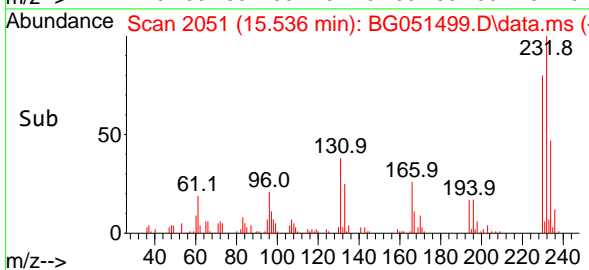
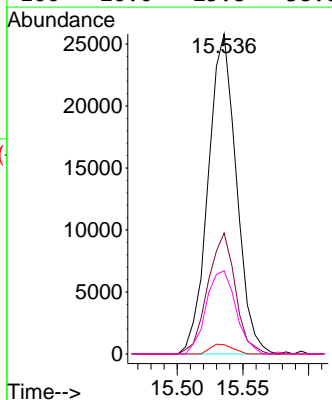
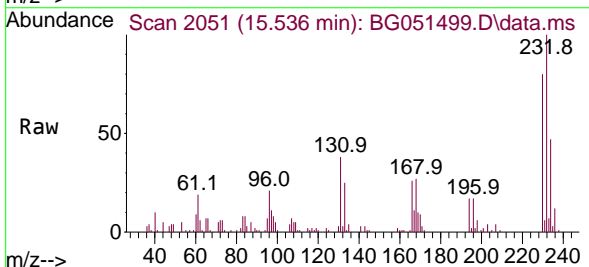
Instrument : BNA_G
 ClientSampleId : SSTD020437

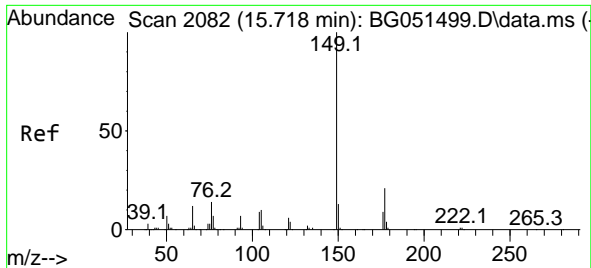
Tgt Ion	Resp	Lower	Upper
165	100		
63	50.2	42.1	63.1
182	2.5	1.8	2.8



#58
 2,3,4,6-Tetrachlorophenol
 Concen: 21.034 ng/ul
 RT: 15.536 min Scan# 2051
 Delta R.T. 0.000 min
 Lab File: BG051499.D
 Acq: 14 Dec 2021 11:28

Tgt Ion	Resp	Lower	Upper
232	100		
131	37.8	38.9	58.3#
130	2.9	2.4	3.6
166	26.0	25.8	38.8





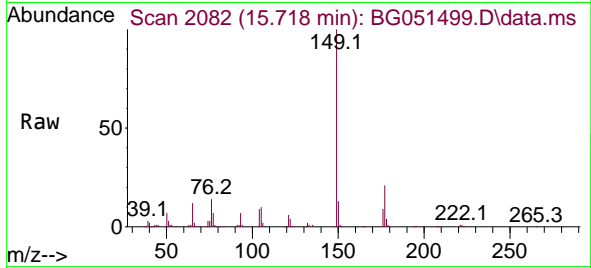
#59
 Diethylphthalate
 Concen: 20.125 ng/uI
 RT: 15.718 min Scan# 2082
 Delta R.T. 0.000 min
 Lab File: BG051499.D
 Acq: 14 Dec 2021 11:28

Instrument :

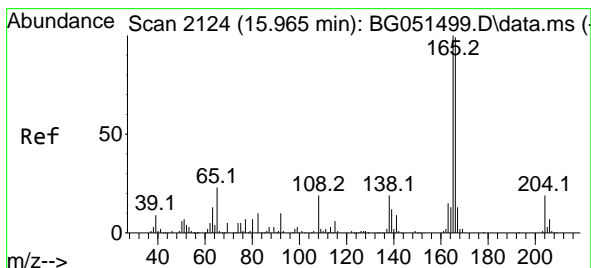
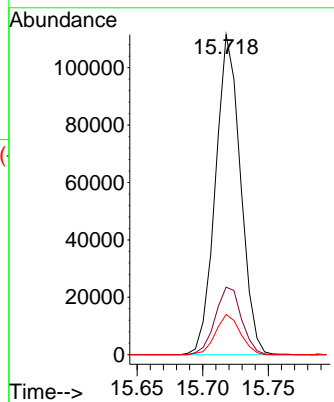
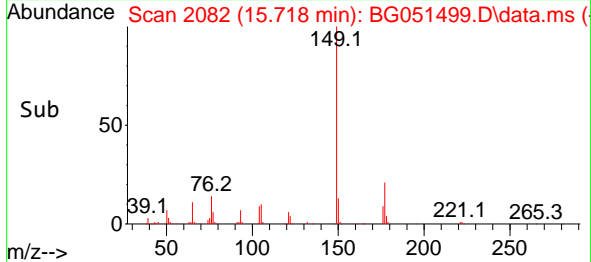
BNA_G

ClientSampleId :

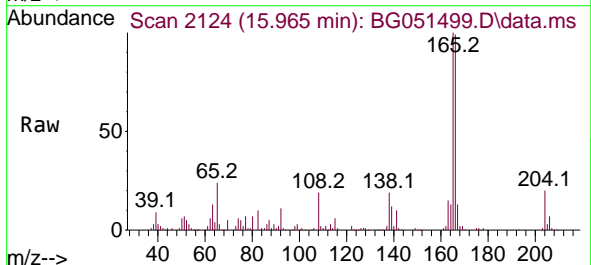
SSTD020437



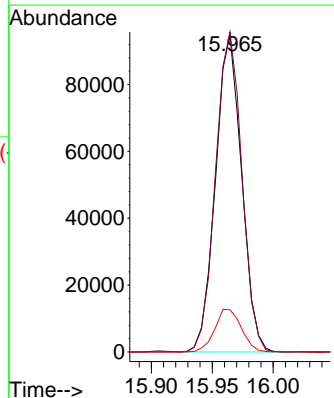
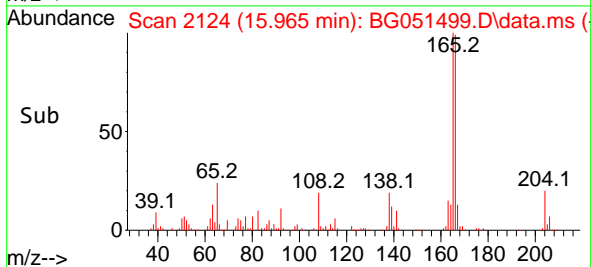
Tgt Ion:149 Resp: 147721
 Ion Ratio Lower Upper
 149 100
 177 21.1 16.8 25.2
 150 12.6 10.1 15.1

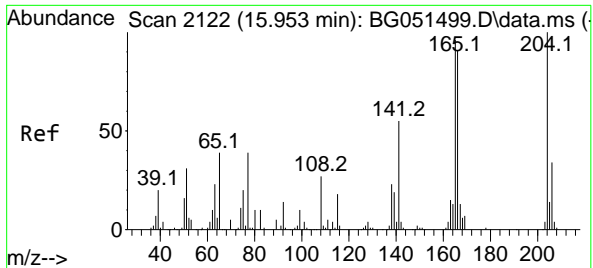


#61
 Fluorene
 Concen: 20.238 ng/uI
 RT: 15.965 min Scan# 2124
 Delta R.T. 0.000 min
 Lab File: BG051499.D
 Acq: 14 Dec 2021 11:28



Tgt Ion:166 Resp: 141160
 Ion Ratio Lower Upper
 166 100
 165 100.8 81.0 121.6
 167 13.3 11.0 16.4

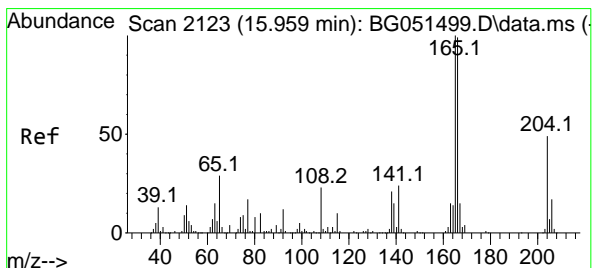
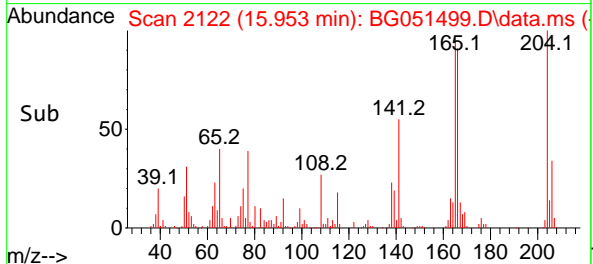
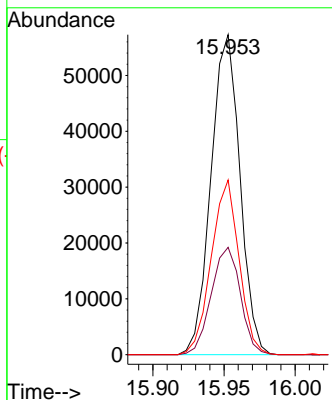
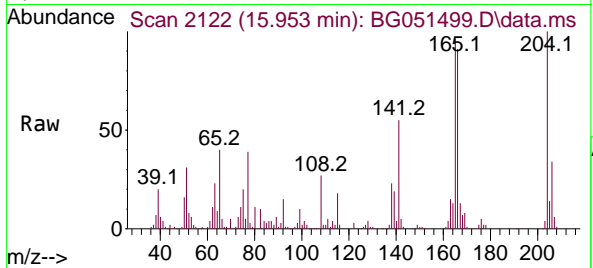




#62
 4-Chlorophenyl-phenylether
 Concen: 20.940 ng/ul
 RT: 15.953 min Scan# 2122
 Delta R.T. 0.000 min
 Lab File: BG051499.D
 Acq: 14 Dec 2021 11:28

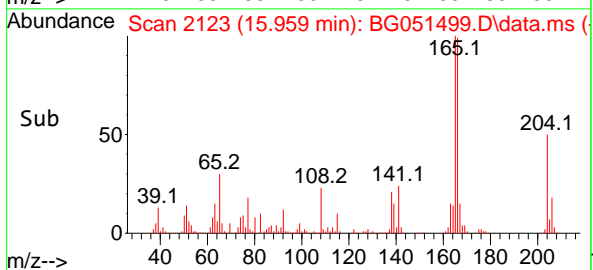
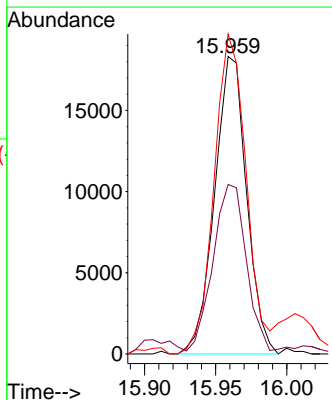
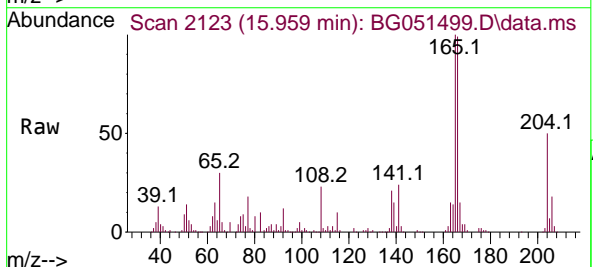
Instrument :
 BNA_G
 ClientSampleId :
 SSTD020437

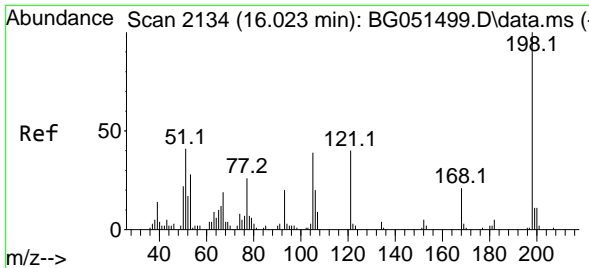
Tgt Ion	Resp	Lower	Upper
204	100		
206	33.6	27.4	41.2
141	54.6	48.6	73.0



#63
 4-Nitroaniline
 Concen: 24.009 ng/ul
 RT: 15.959 min Scan# 2123
 Delta R.T. 0.000 min
 Lab File: BG051499.D
 Acq: 14 Dec 2021 11:28

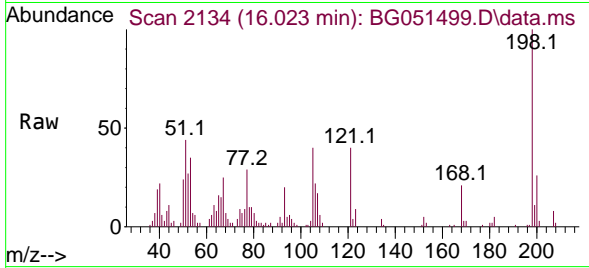
Tgt Ion	Resp	Lower	Upper
138	100		
92	57.0	49.3	73.9
108	107.6	72.6	108.8



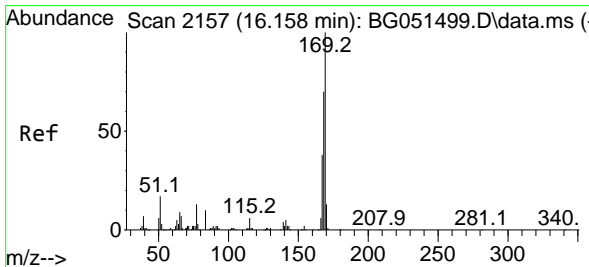
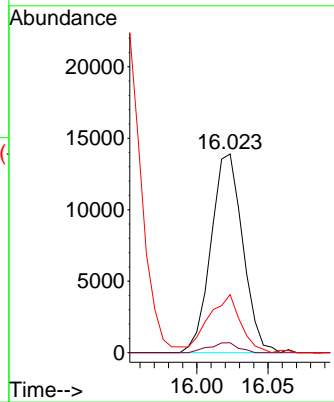
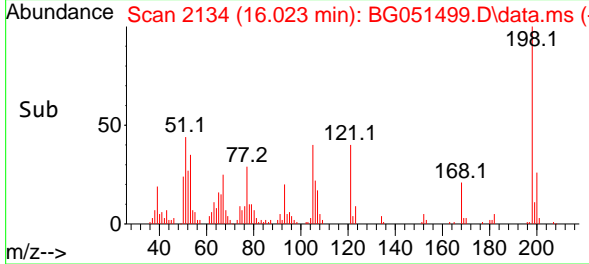


#66
 4,6-Dinitro-2-methylphenol
 Concen: 21.107 ng/ul
 RT: 16.023 min Scan# 2134
 Delta R.T. 0.000 min
 Lab File: BG051499.D
 Acq: 14 Dec 2021 11:28

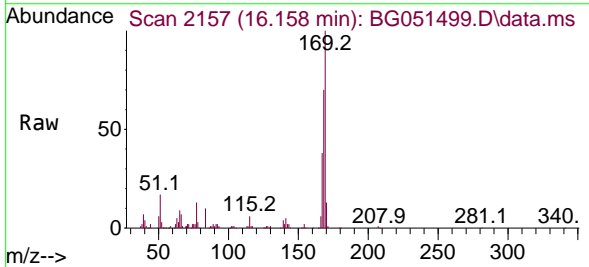
Instrument : BNA_G
 ClientSampleId : SSTD020437



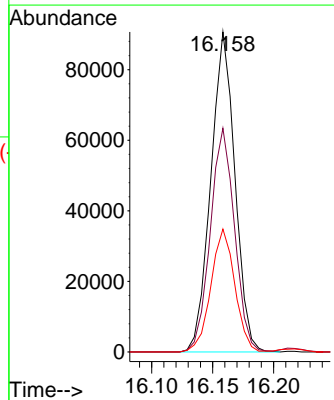
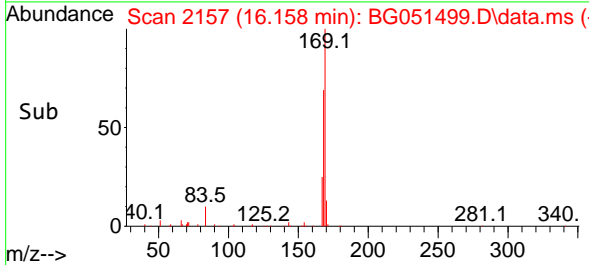
Tgt Ion:198 Resp: 21620
 Ion Ratio Lower Upper
 198 100
 182 5.0 3.8 5.8
 77 29.3 23.2 34.8

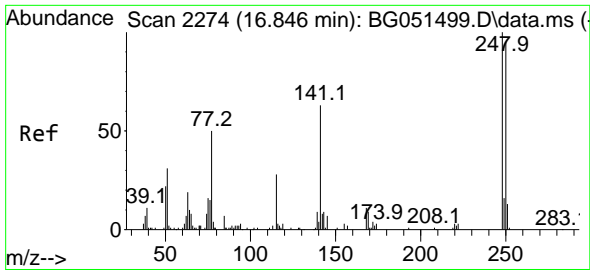


#67
 N-Nitrosodiphenylamine
 Concen: 19.909 ng/ul
 RT: 16.158 min Scan# 2157
 Delta R.T. 0.000 min
 Lab File: BG051499.D
 Acq: 14 Dec 2021 11:28



Tgt Ion:169 Resp: 124671
 Ion Ratio Lower Upper
 169 100
 168 69.9 58.5 87.7
 167 38.4 31.3 46.9

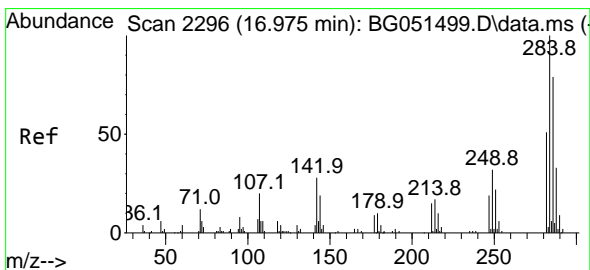
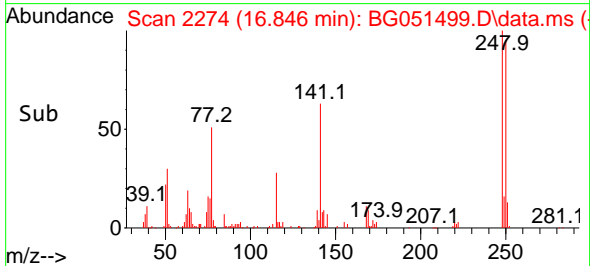
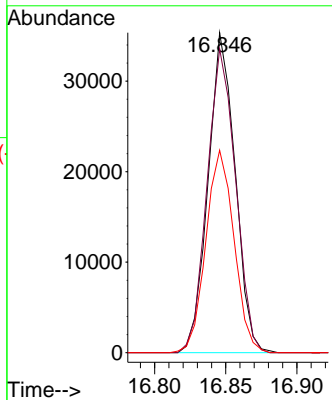
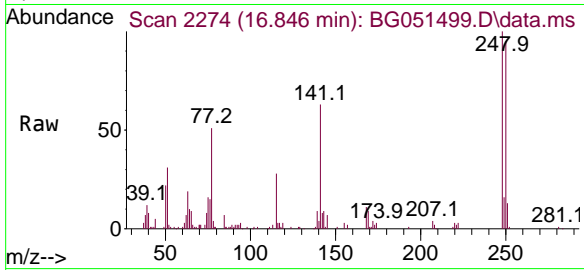




#68
 4-Bromophenyl-phenylether
 Concen: 17.768 ng/ul
 RT: 16.846 min Scan# 21
 Delta R.T. 0.000 min
 Lab File: BG051499.D
 Acq: 14 Dec 2021 11:28

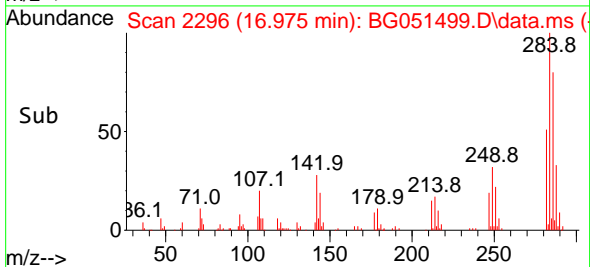
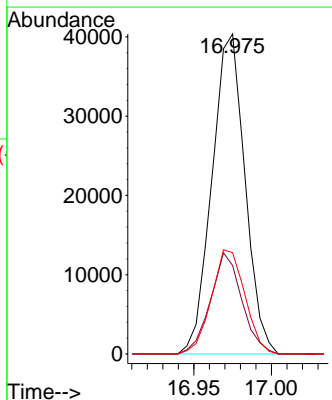
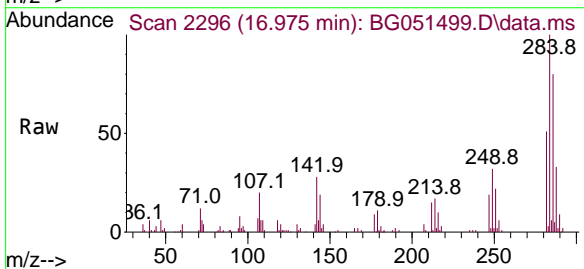
Instrument :
 BNA_G
 ClientSampleId :
 SSTD020437

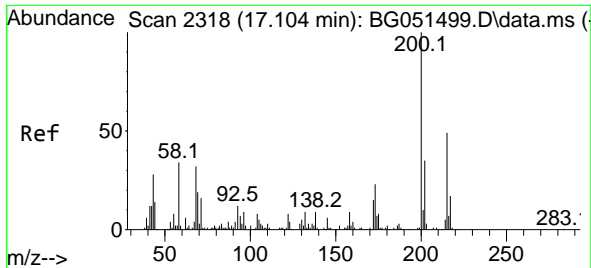
Tgt Ion:248 Resp: 46708
 Ion Ratio Lower Upper
 248 100
 250 95.0 75.5 113.3
 141 63.2 67.6 101.4#



#69
 Hexachlorobenzene
 Concen: 20.503 ng/ul
 RT: 16.975 min Scan# 2296
 Delta R.T. 0.000 min
 Lab File: BG051499.D
 Acq: 14 Dec 2021 11:28

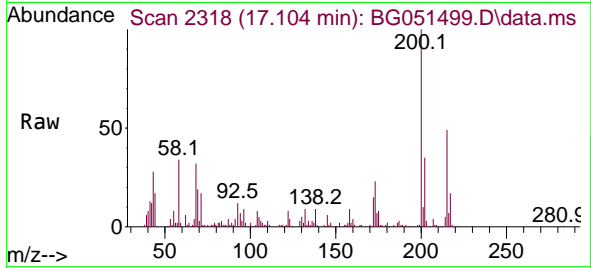
Tgt Ion:284 Resp: 59646
 Ion Ratio Lower Upper
 284 100
 142 27.6 31.9 47.9#
 249 31.7 25.8 38.6



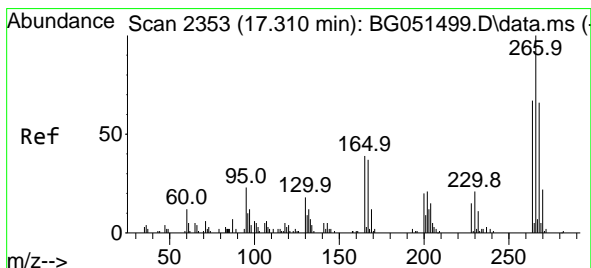
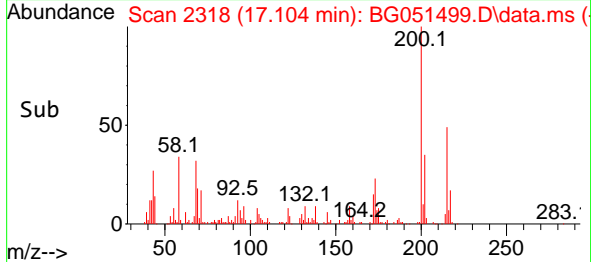
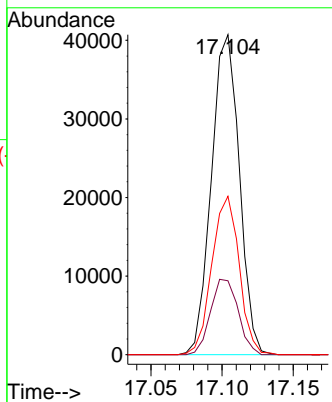


#70
 Atrazine
 Concen: 19.842 ng/uI
 RT: 17.104 min Scan# 21
 Delta R.T. 0.000 min
 Lab File: BG051499.D
 Acq: 14 Dec 2021 11:28

Instrument :
 BNA_G
 ClientSampleId :
 SSTD020437

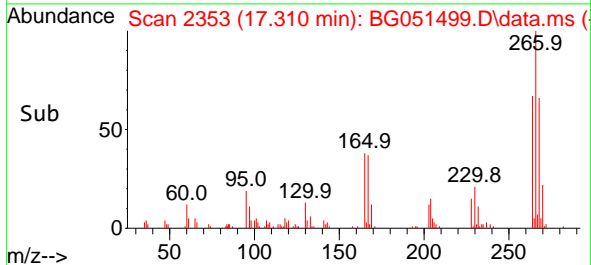
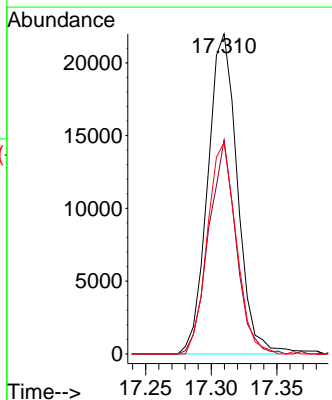
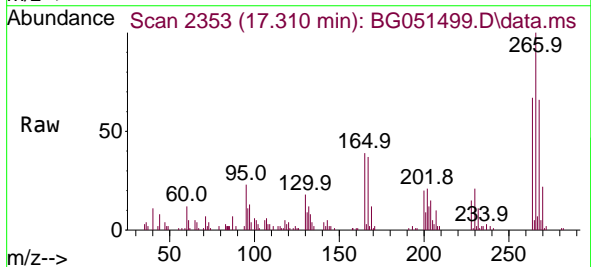


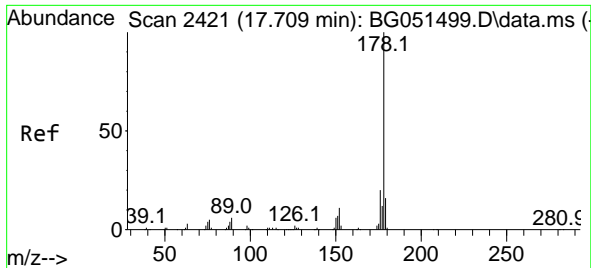
Tgt Ion:200 Resp: 55691
 Ion Ratio Lower Upper
 200 100
 173 23.1 20.2 30.2
 215 49.5 38.1 57.1



#71
 Pentachlorophenol
 Concen: 19.583 ng/uI
 RT: 17.310 min Scan# 2353
 Delta R.T. 0.000 min
 Lab File: BG051499.D
 Acq: 14 Dec 2021 11:28

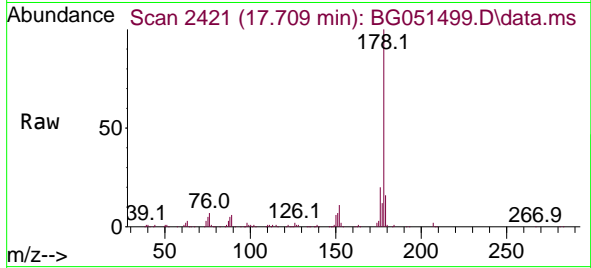
Tgt Ion:266 Resp: 34430
 Ion Ratio Lower Upper
 266 100
 264 66.9 54.3 81.5
 268 66.1 51.0 76.6



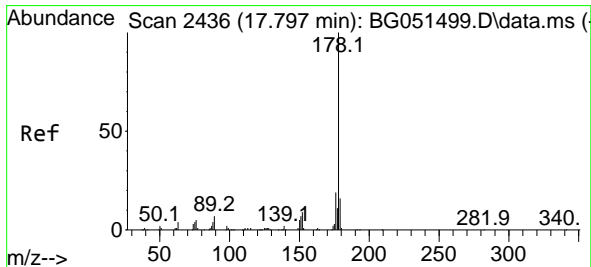
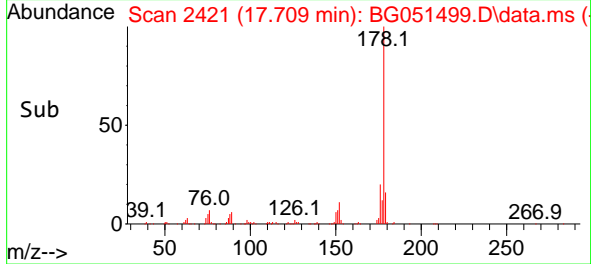
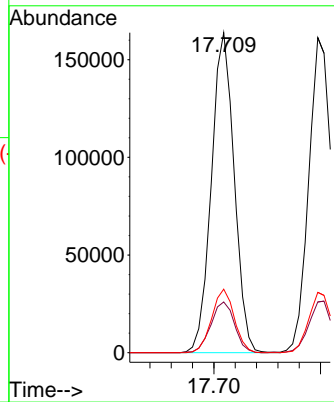


#72
 Phenanthrene
 Concen: 20.961 ng/u1
 RT: 17.709 min Scan# 2421
 Delta R.T. 0.000 min
 Lab File: BG051499.D
 Acq: 14 Dec 2021 11:28

Instrument :
 BNA_G
 ClientSampleId :
 SSTD020437

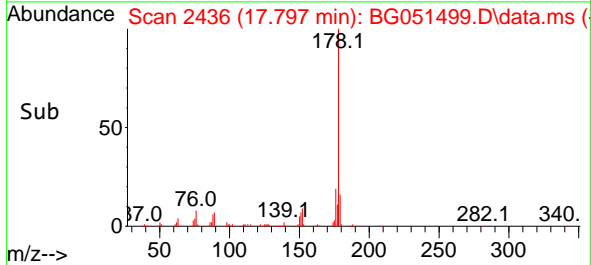
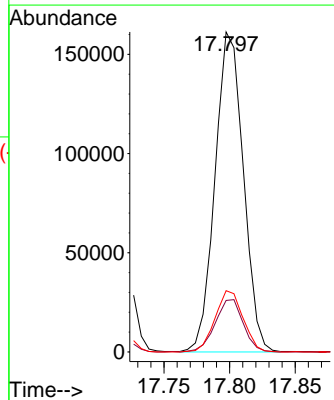
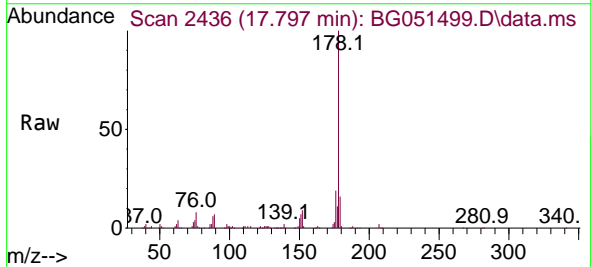


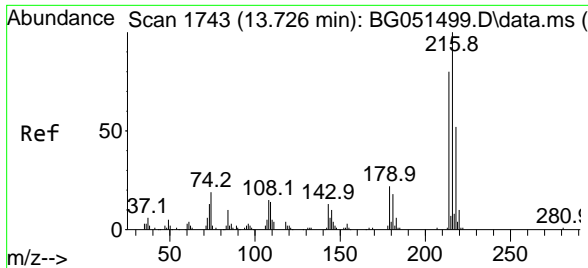
Tgt Ion:178 Resp: 242936
 Ion Ratio Lower Upper
 178 100
 179 15.9 12.3 18.5
 176 19.9 15.5 23.3



#74
 Anthracene
 Concen: 20.571 ng/u1
 RT: 17.797 min Scan# 2436
 Delta R.T. 0.000 min
 Lab File: BG051499.D
 Acq: 14 Dec 2021 11:28

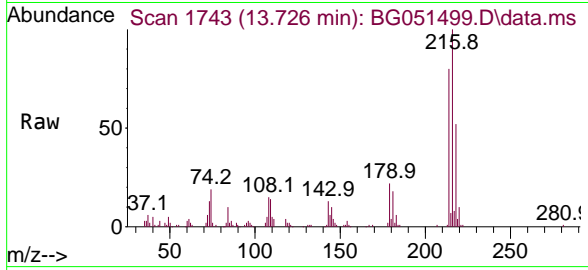
Tgt Ion:178 Resp: 241910
 Ion Ratio Lower Upper
 178 100
 179 16.1 13.0 19.6
 176 19.2 15.6 23.4



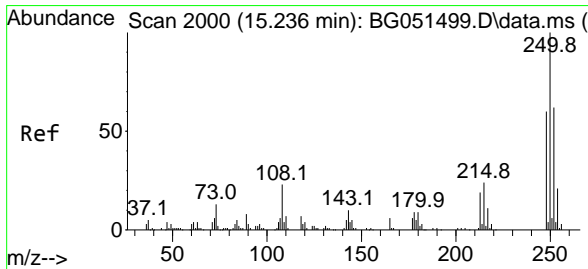
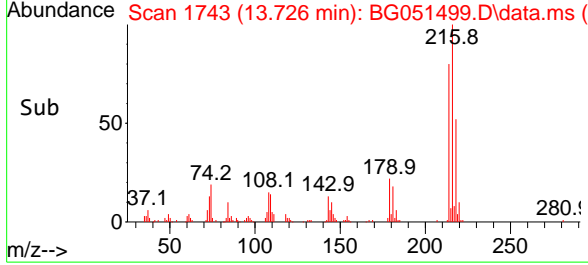
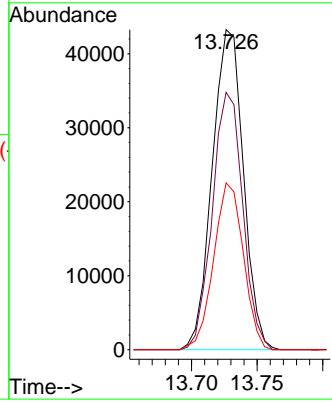


#75
 1,2,3,4-Tetrachlorobenzene
 Concen: 20.364 ng/uL
 RT: 13.726 min Scan# 1743
 Delta R.T. 0.000 min
 Lab File: BG051499.D
 Acq: 14 Dec 2021 11:28

Instrument :
 BNA_G
 ClientSampleId :
 SSTD020437

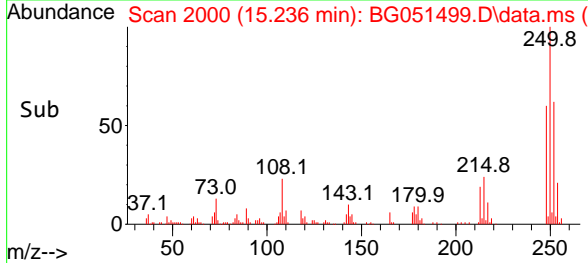
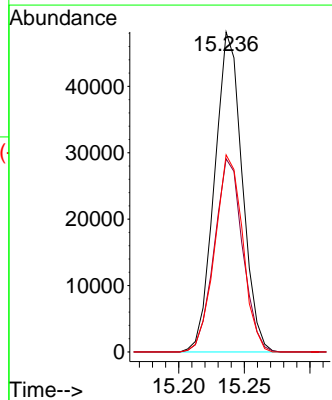
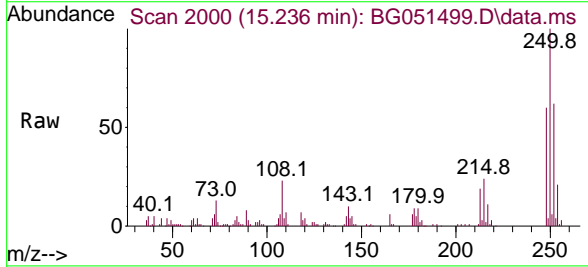


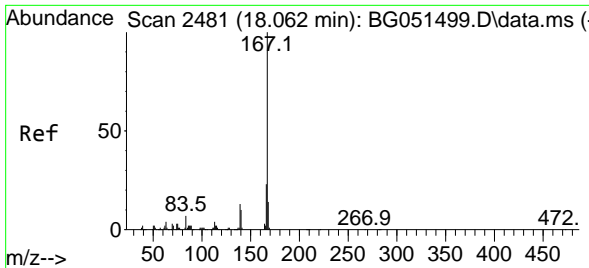
Tgt Ion:216 Resp: 71444
 Ion Ratio Lower Upper
 216 100
 214 80.4 61.3 91.9
 218 52.2 37.0 55.6



#76
 Pentachlorobenzene
 Concen: 20.704 ng/uL
 RT: 15.236 min Scan# 2000
 Delta R.T. 0.000 min
 Lab File: BG051499.D
 Acq: 14 Dec 2021 11:28

Tgt Ion:250 Resp: 70588
 Ion Ratio Lower Upper
 250 100
 248 60.4 50.5 75.7
 252 61.6 51.2 76.8



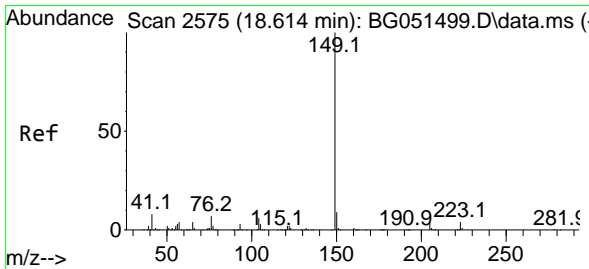
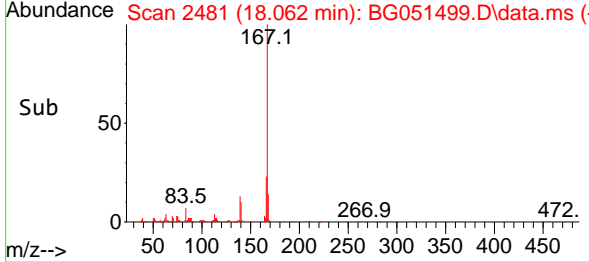
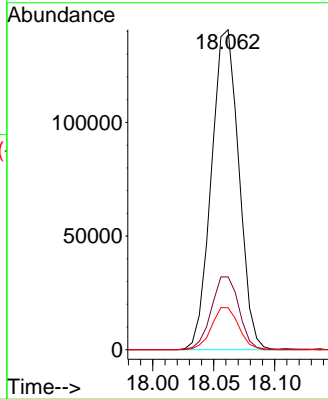
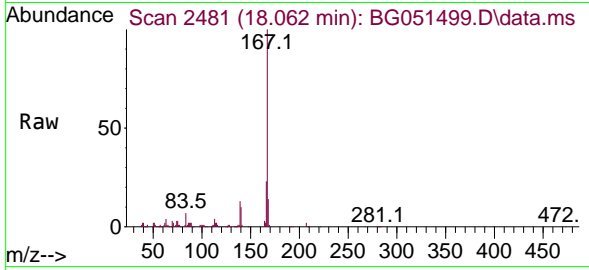


#77
 Carbazole
 Concen: 20.777 ng/ul
 RT: 18.062 min Scan# 2481
 Delta R.T. 0.000 min
 Lab File: BG051499.D
 Acq: 14 Dec 2021 11:28

Instrument : BNA_G
 ClientSampleId : SSTD020437

Tgt Ion:167 Resp: 220732

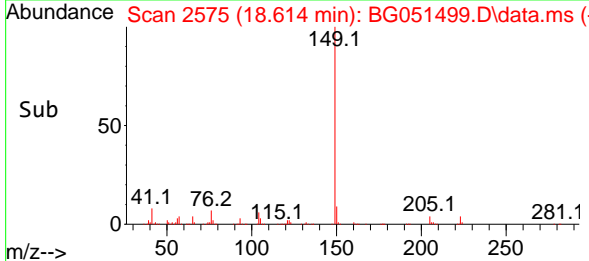
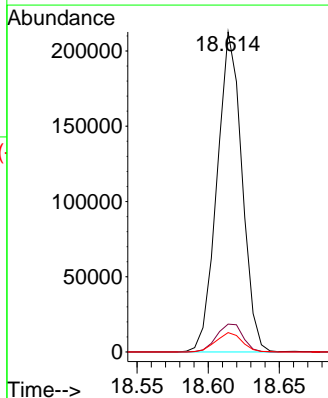
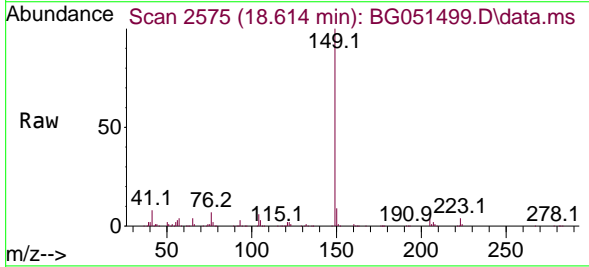
Ion	Ratio	Lower	Upper
167	100		
166	22.7	17.3	25.9
139	13.1	10.6	16.0

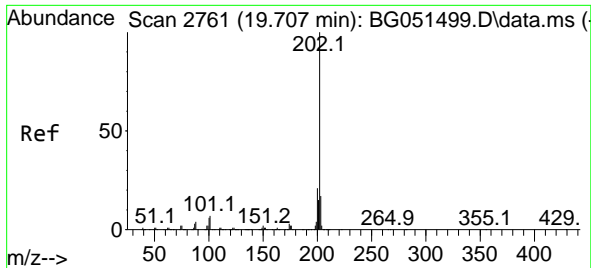


#78
 Di-n-butylphthalate
 Concen: 19.815 ng/ul
 RT: 18.614 min Scan# 2575
 Delta R.T. 0.000 min
 Lab File: BG051499.D
 Acq: 14 Dec 2021 11:28

Tgt Ion:149 Resp: 259298

Ion	Ratio	Lower	Upper
149	100		
150	8.7	7.5	11.3
104	6.1	5.0	7.6



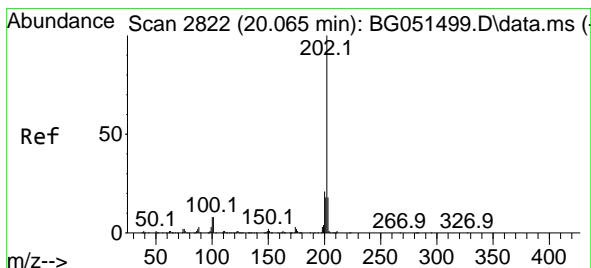
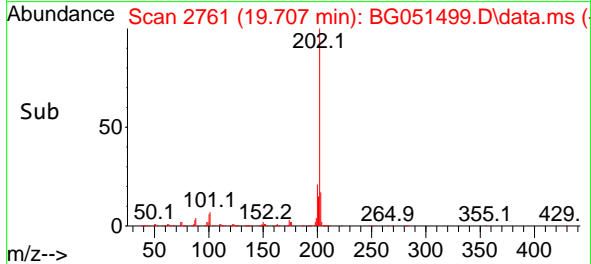
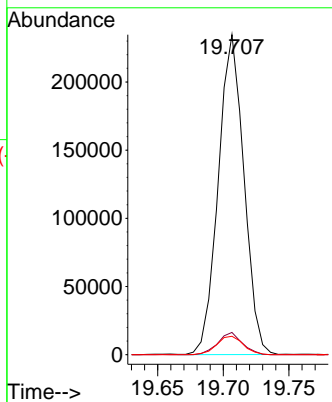
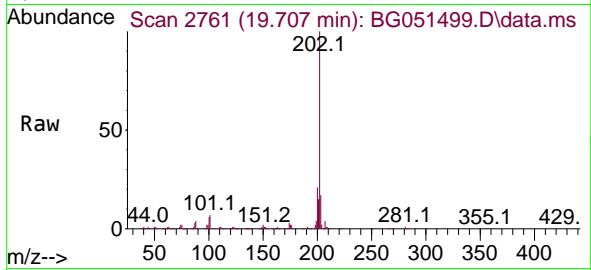


#80
 Fluoranthene
 Concen: 20.389 ng/u1
 RT: 19.707 min Scan# 21
 Delta R.T. 0.000 min
 Lab File: BG051499.D
 Acq: 14 Dec 2021 11:28

Instrument :
 BNA_G
 ClientSampleId :
 SSTD020437

Tgt Ion:202 Resp: 318961

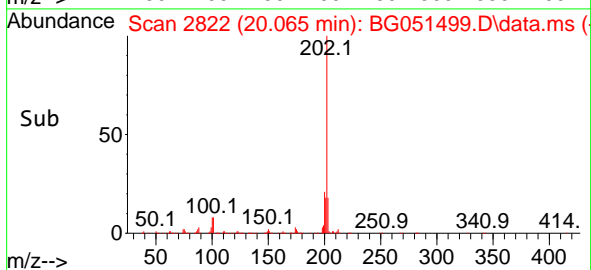
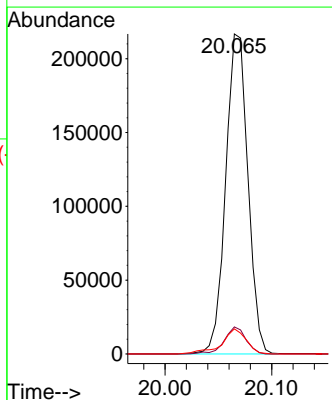
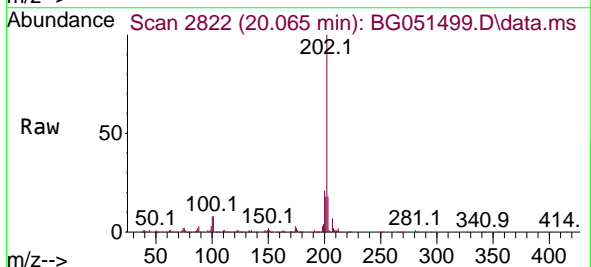
Ion	Ratio	Lower	Upper
202	100		
101	6.9	9.3	13.9#
100	5.7	7.0	10.6#

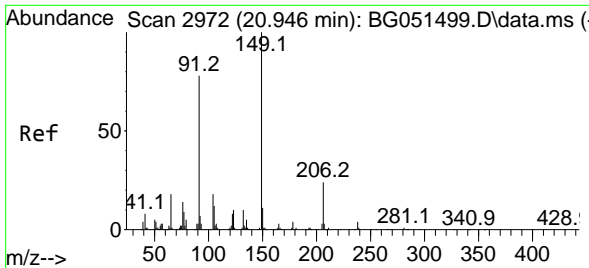


#82
 Pyrene
 Concen: 20.612 ng/u1
 RT: 20.065 min Scan# 2822
 Delta R.T. 0.000 min
 Lab File: BG051499.D
 Acq: 14 Dec 2021 11:28

Tgt Ion:202 Resp: 314236

Ion	Ratio	Lower	Upper
202	100		
101	8.5	10.7	16.1#
100	7.8	9.0	13.6#



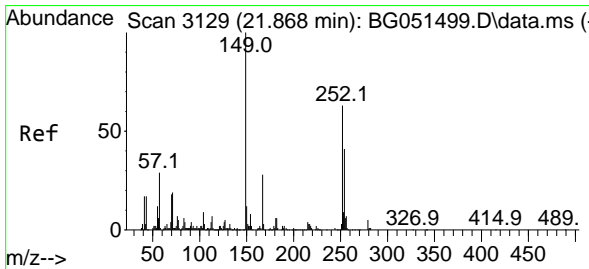
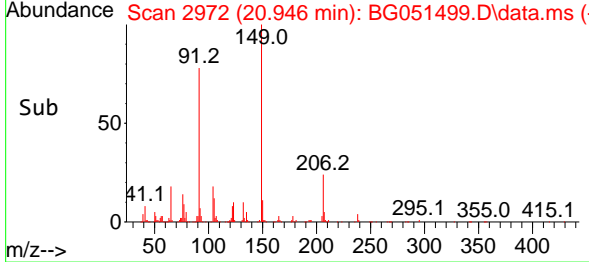
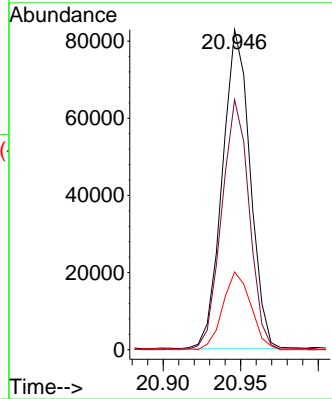
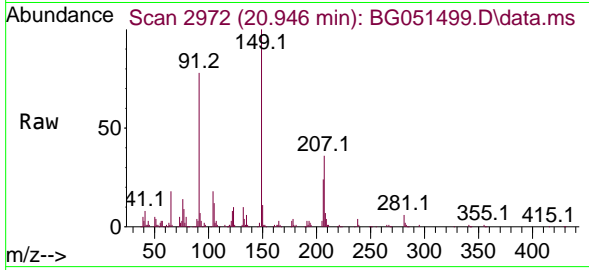


#83
 Butylbenzylphthalate
 Concen: 19.437 ng/ul
 RT: 20.946 min Scan# 2972
 Delta R.T. 0.000 min
 Lab File: BG051499.D
 Acq: 14 Dec 2021 11:28

Instrument : BNA_G
 ClientSampleId : SSTD020437

Tgt Ion:149 Resp: 103203

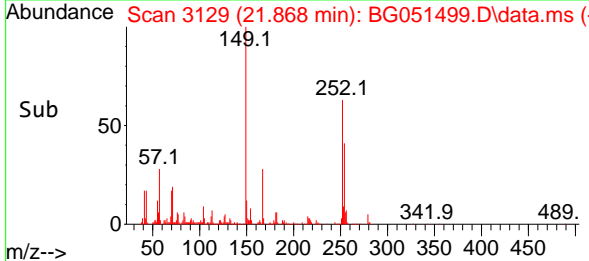
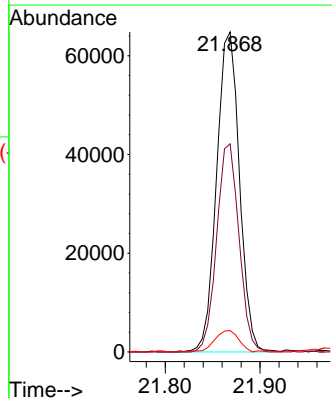
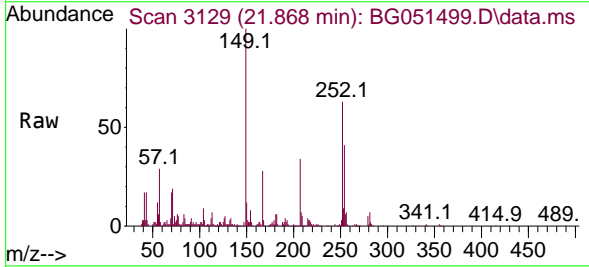
Ion	Ratio	Lower	Upper
149	100		
91	78.1	65.2	97.8
206	24.3	16.2	24.2#

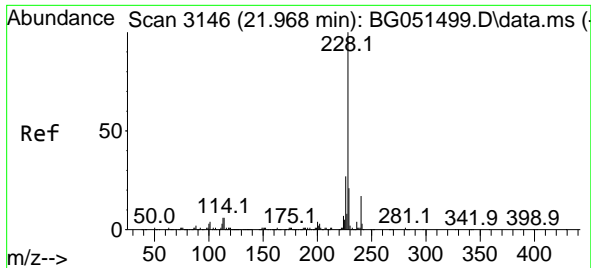


#84
 3,3'-Dichlorobenzidine
 Concen: 20.271 ng/ul
 RT: 21.868 min Scan# 3129
 Delta R.T. 0.000 min
 Lab File: BG051499.D
 Acq: 14 Dec 2021 11:28

Tgt Ion:252 Resp: 108500

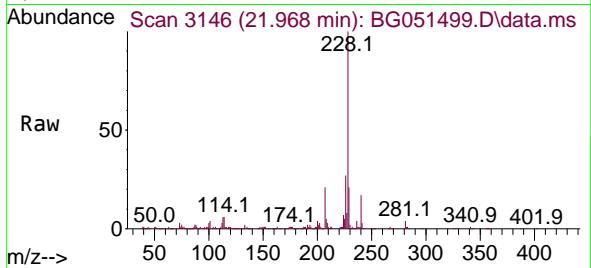
Ion	Ratio	Lower	Upper
252	100		
254	65.0	50.8	76.2
126	6.7	9.0	13.4#



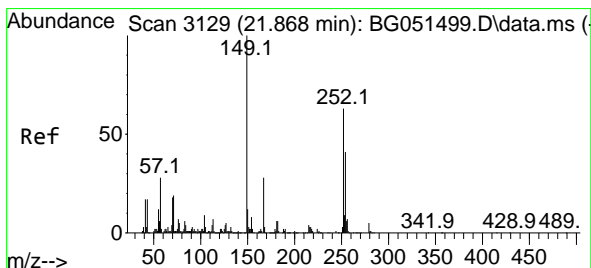
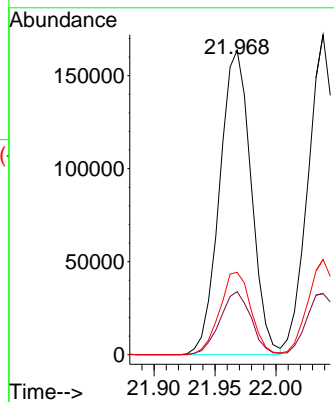
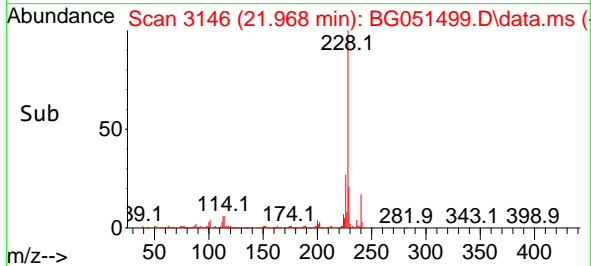


#85
 Benzo(a)anthracene
 Concen: 20.687 ng/ul
 RT: 21.968 min Scan# 3146
 Delta R.T. 0.000 min
 Lab File: BG051499.D
 Acq: 14 Dec 2021 11:28

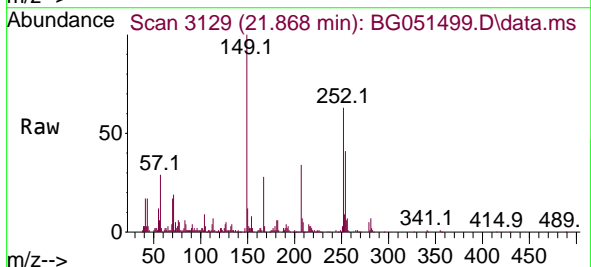
Instrument :
 BNA_G
 ClientSampleId :
 SSTD020437



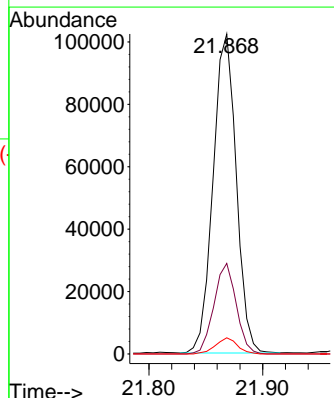
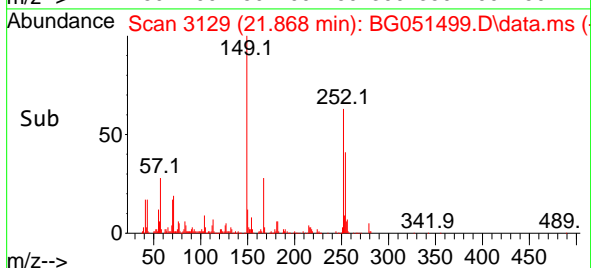
Tgt Ion:228 Resp: 294369
 Ion Ratio Lower Upper
 228 100
 229 20.7 15.7 23.5
 226 27.1 22.3 33.5

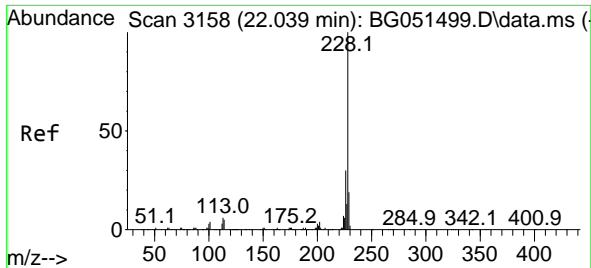


#86
 Bis(2-ethylhexyl)phthalate
 Concen: 19.479 ng/ul
 RT: 21.868 min Scan# 3129
 Delta R.T. 0.000 min
 Lab File: BG051499.D
 Acq: 14 Dec 2021 11:28



Tgt Ion:149 Resp: 144728
 Ion Ratio Lower Upper
 149 100
 167 28.3 21.1 31.7
 279 5.0 2.7 4.1#



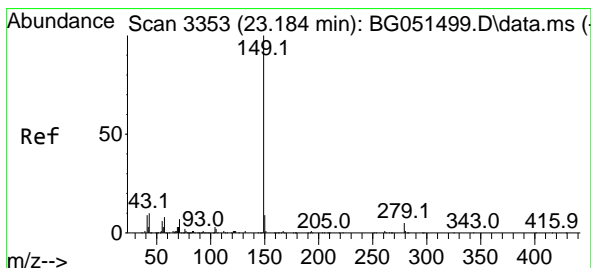
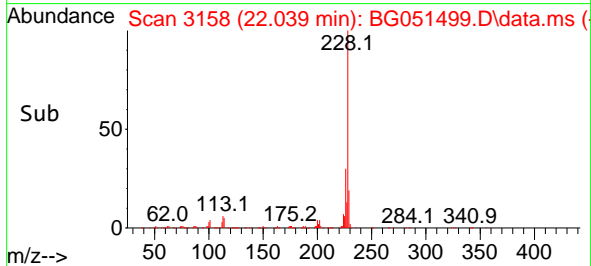
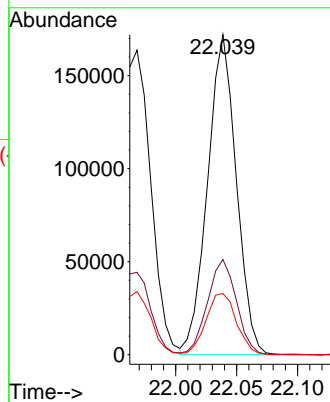
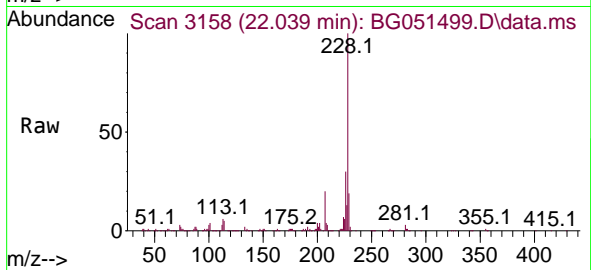


#87
 Chrysene
 Concen: 20.725 ng/u1
 RT: 22.039 min Scan# 3158
 Delta R.T. 0.000 min
 Lab File: BG051499.D
 Acq: 14 Dec 2021 11:28

Instrument :
 BNA_G
 ClientSampleId :
 SSTD020437

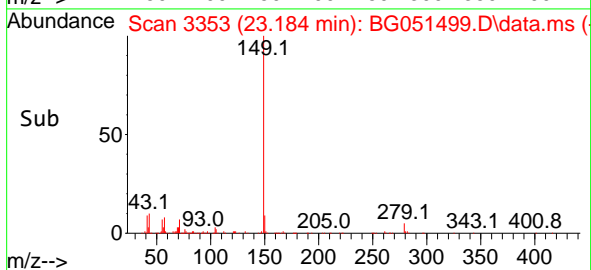
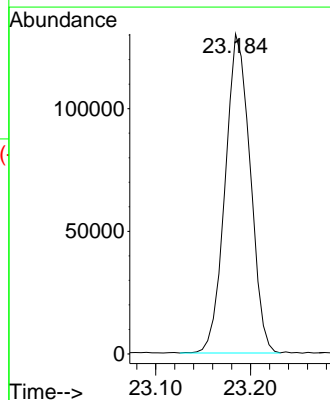
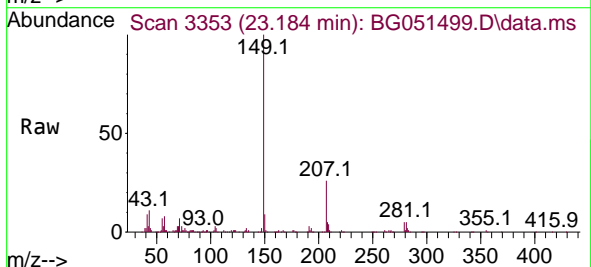
Tgt Ion:228 Resp: 282505

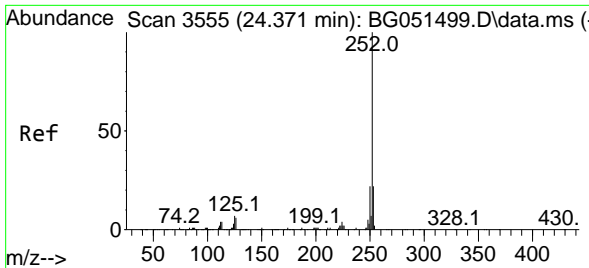
Ion	Ratio	Lower	Upper
228	100		
226	29.8	24.8	37.2
229	19.1	15.8	23.6



#89
 Di-n-octyl phthalate
 Concen: 20.101 ng/u1
 RT: 23.184 min Scan# 3353
 Delta R.T. 0.000 min
 Lab File: BG051499.D
 Acq: 14 Dec 2021 11:28

Tgt Ion:149 Resp: 238370



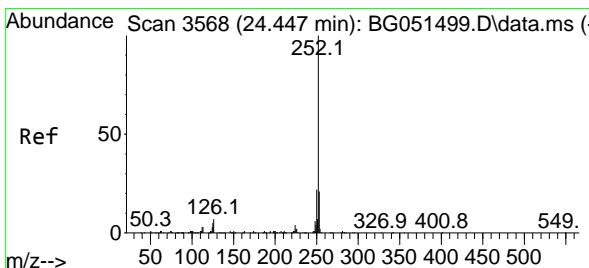
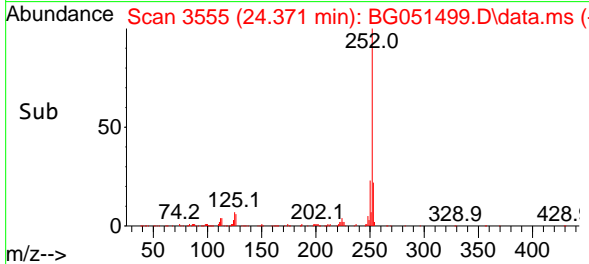
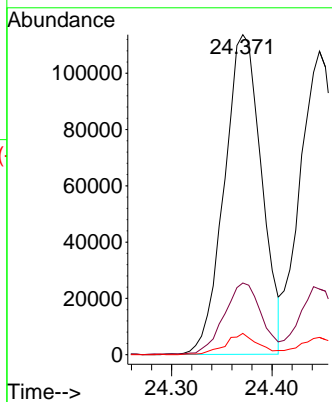
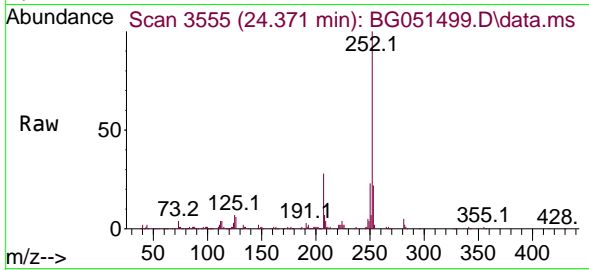


#90
 Benzo(b)fluoranthene
 Concen: 20.876 ng/ul
 RT: 24.371 min Scan# 3555
 Delta R.T. 0.000 min
 Lab File: BG051499.D
 Acq: 14 Dec 2021 11:28

Instrument : BNA_G
 ClientSampleId : SSTD020437

Tgt Ion:252 Resp: 293270

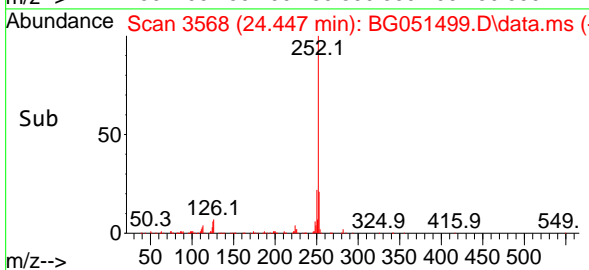
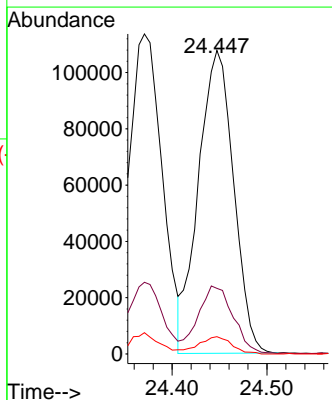
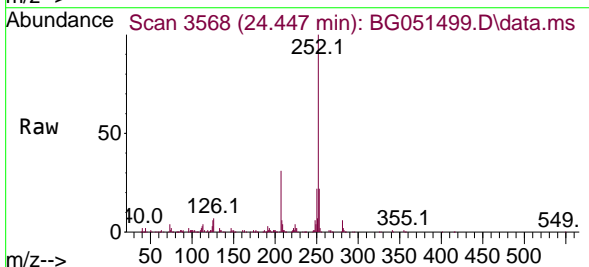
Ion	Ratio	Lower	Upper
252	100		
253	22.4	17.8	26.6
125	6.7	8.5	12.7#

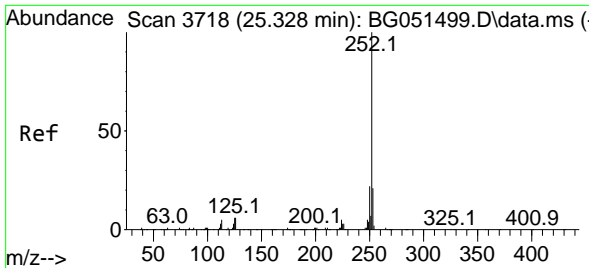


#91
 Benzo(k)fluoranthene
 Concen: 21.306 ng/ul
 RT: 24.447 min Scan# 3568
 Delta R.T. 0.000 min
 Lab File: BG051499.D
 Acq: 14 Dec 2021 11:28

Tgt Ion:252 Resp: 277298

Ion	Ratio	Lower	Upper
252	100		
253	21.6	17.3	25.9
125	5.7	7.8	11.6#



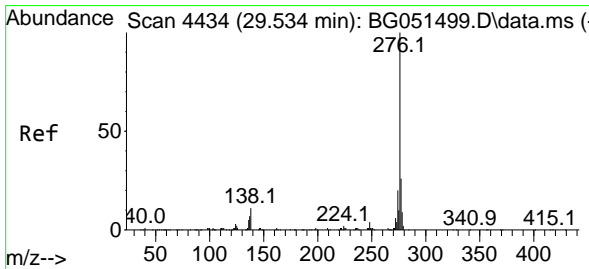
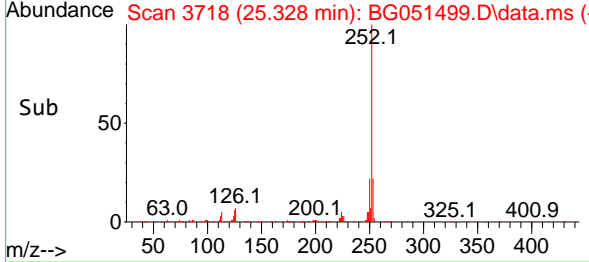
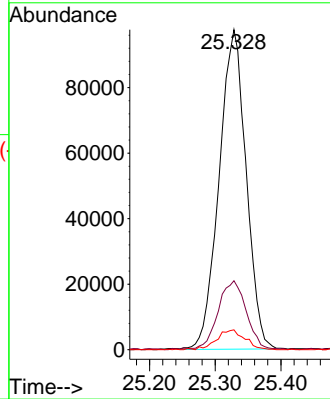
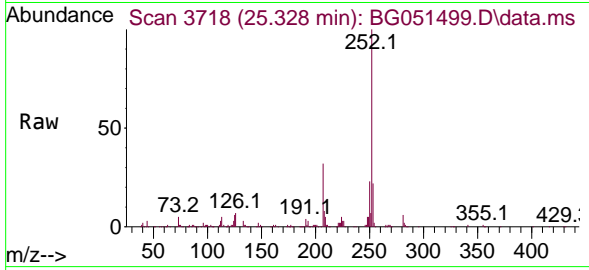


#93
 Benzo(a)pyrene
 Concen: 20.951 ng/u1
 RT: 25.328 min Scan# 31
 Delta R.T. 0.000 min
 Lab File: BG051499.D
 Acq: 14 Dec 2021 11:28

Instrument : BNA_G
 ClientSampleId : SSTD020437

Tgt Ion:252 Resp: 279055

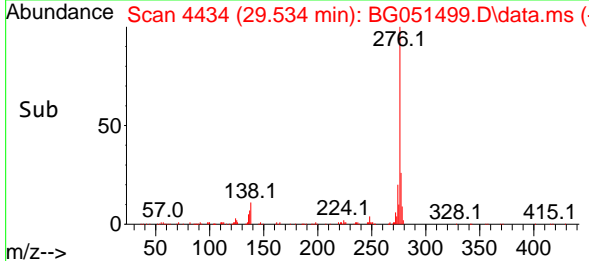
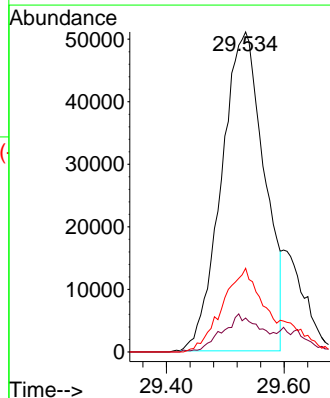
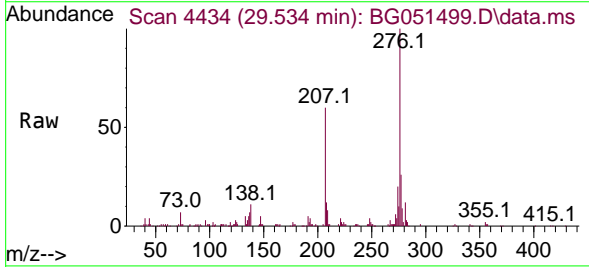
Ion	Ratio	Lower	Upper
252	100		
253	21.5	17.4	26.2
125	6.2	9.1	13.7#

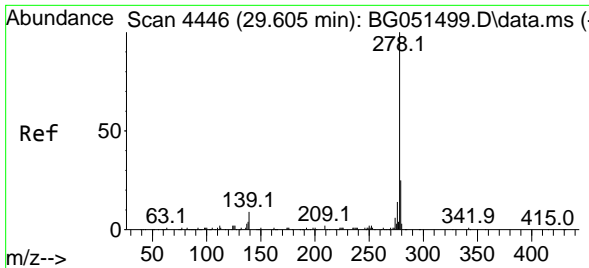


#94
 Indeno(1,2,3-cd)pyrene
 Concen: 17.209 ng/u1
 RT: 29.534 min Scan# 4434
 Delta R.T. 0.000 min
 Lab File: BG051499.D
 Acq: 14 Dec 2021 11:28

Tgt Ion:276 Resp: 257469

Ion	Ratio	Lower	Upper
276	100		
138	10.6	15.5	23.3#
277	26.2	20.5	30.7



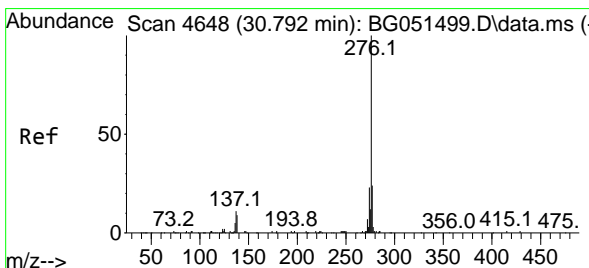
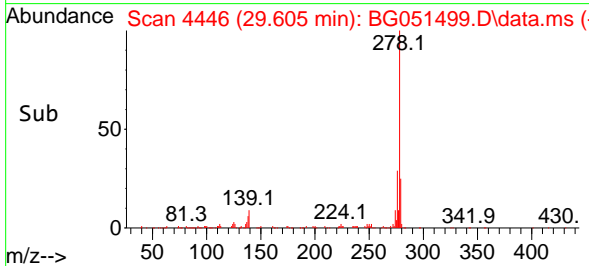
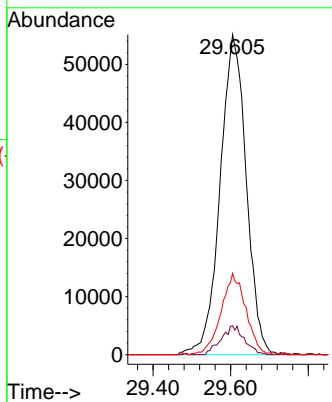
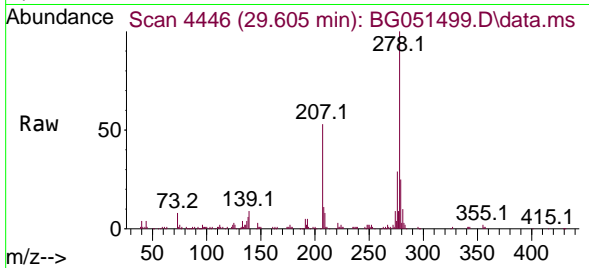


#95
 Dibenzo(a,h)anthracene
 Concen: 20.267 ng/ul
 RT: 29.605 min Scan# 4446
 Delta R.T. 0.000 min
 Lab File: BG051499.D
 Acq: 14 Dec 2021 11:28

Instrument : BNA_G
 ClientSampleId : SSTD020437

Tgt Ion:278 Resp: 257757

Ion	Ratio	Lower	Upper
278	100		
139	9.0	12.2	18.4#
279	25.4	19.5	29.3



#96
 Benzo(g,h,i)perylene
 Concen: 19.643 ng/ul
 RT: 30.792 min Scan# 4648
 Delta R.T. 0.000 min
 Lab File: BG051499.D
 Acq: 14 Dec 2021 11:28

Tgt Ion:276 Resp: 252139

Ion	Ratio	Lower	Upper
276	100		
138	9.3	16.6	24.8#
277	24.3	17.6	26.4

