

Data Path : Z:\HPCHEM1\BNA G\DATA\BG121516\
 Data File : BG025223.D
 Acq On : 15 Dec 2016 22:34
 Operator : UM/SJ
 Sample : H5995-22
 Misc :
 ALS Vial : 15 Sample Multiplier: 1

Instrument :
 BNA_G
 ClientSampleId :
 DA889

Quant Time: Dec 16 05:41:18 2016
 Quant Method : Z:\HPCHEM1\BNA G\METHODS\SOM02.2-EPA-BG113016.M
 Quant Title : SVOA CALIBRATION
 QLast Update : Fri Dec 16 03:23:37 2016
 Response via : Initial Calibration

Internal Standards	R.T.	QIon	Response	Conc	Units	Dev(Min)
1) 1,4-Dichlorobenzene-d4	8.23	152	62506	20.00	ng/ul	0.00
18) Naphthalene-d8	11.06	136	289296	20.00	ng/ul	0.00
35) Acenaphthene-d10	14.86	164	238852	20.00	ng/ul	0.00
61) Phenanthrene-d10	17.60	188	499330	20.00	ng/ul	0.00
75) Chrysene-d12	21.89	240	611023	20.00	ng/ul	0.00
83) Perylene-d12	25.30	264	585671	20.00	ng/ul	-0.02

System Monitoring Compounds

3) 1,4-Dioxane-d8	0.00	96	0d	0.00	ng/uL	
5) Phenol-d5	0.00	99	0d	0.00	ng/ul	
7) Bis-(2-Chloroethyl)ether-d	0.00	67	0d	0.00	ng/ul	
9) 2-Chlorophenol-d4	0.00	132	0d	0.00	ng/ul	
13) 4-Methylphenol-d8	0.00	113	0	0.00	ng/ul	
19) Nitrobenzene-d5	0.00	128	0d	0.00	ng/ul	
22) 2-Nitrophenol-d4	0.00	143	0d	0.00	ng/ul	
26) 2,4-Dichlorophenol-d3	0.00	165	0d	0.00	ng/ul	
29) 4-Chloroaniline-d4	0.00	131	0d	0.00	ng/ul	
43) Dimethylphthalate-d6	0.00	166	0d	0.00	ng/ul	
46) Acenaphthylene-d8	0.00	160	0d	0.00	ng/ul	
51) 4-Nitrophenol-d4	0.00	143	0	0.00	ng/ul	
57) Fluorene-d10	0.00	176	0d	0.00	ng/ul	
62) 4,6-Dinitro-2-methylphenol	0.00	200	0d	0.00	ng/ul	
70) Anthracene-d10	0.00	188	0d	0.00	ng/ul	
76) Pyrene-d10	0.00	212	0d	0.00	ng/ul	
87) Benzo(a)pyrene-d12	0.00	264	0d	0.00	ng/ul	

Target Compounds

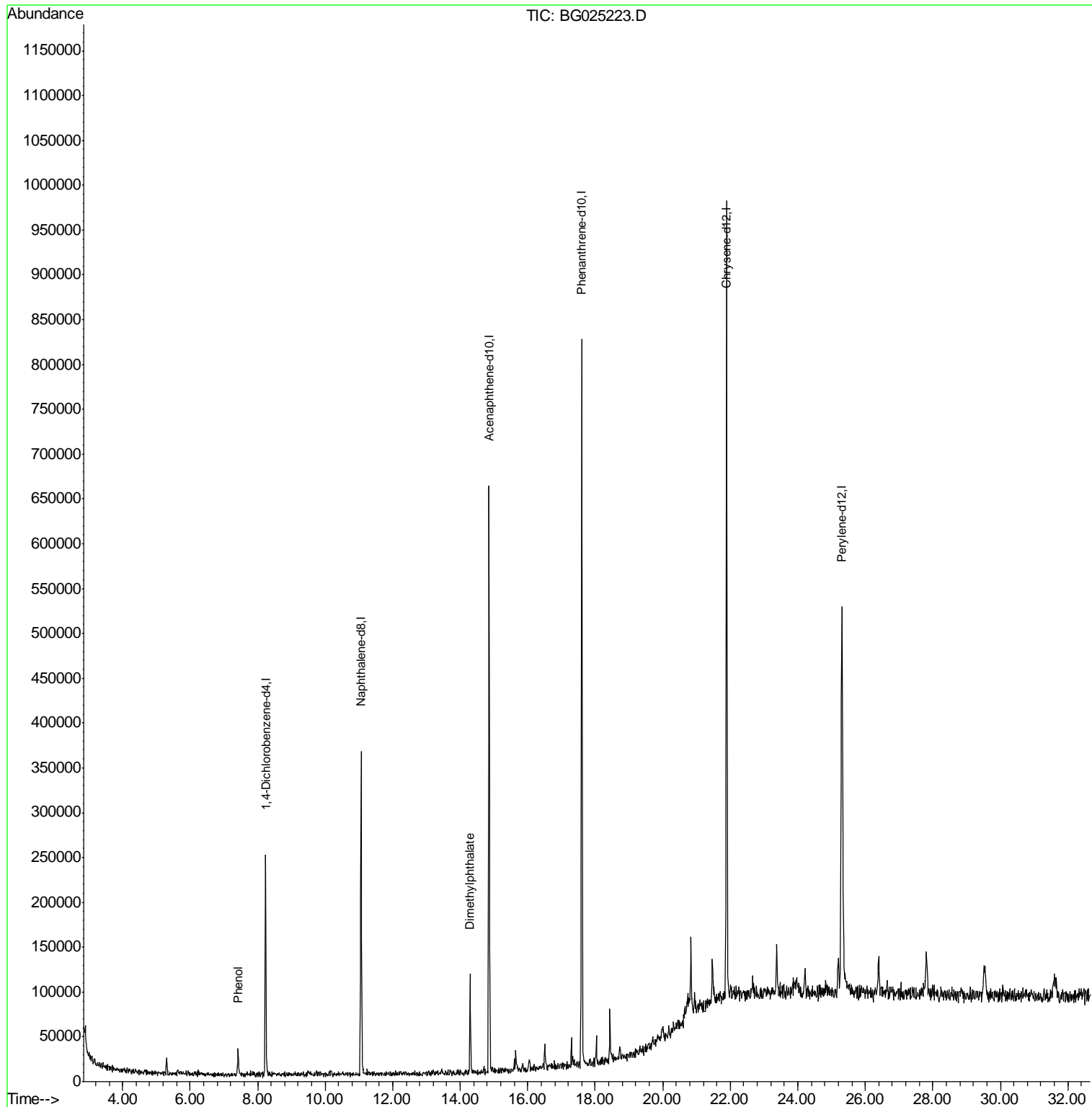
Target Compounds	R.T.	QIon	Response	Conc	Units	Ovalue
6) Phenol	7.42	94	18536	3.35	ng/ul	91
44) Dimethylphthalate	14.30	163	70046	4.34	ng/ul	98

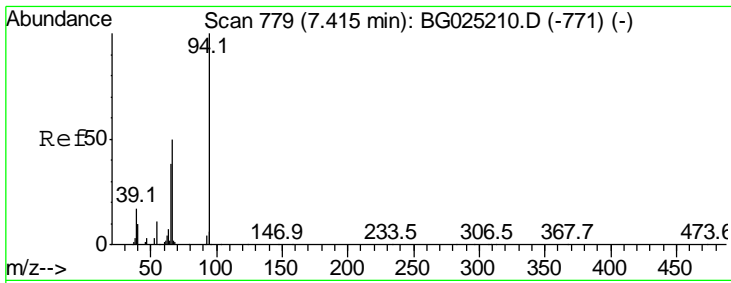
(#) = qualifier out of range (m) = manual integration (+) = signals summed

Data Path : Z:\HPCHEM1\BNA G\DATA\BG121516\
 Data File : BG025223.D
 Acq On : 15 Dec 2016 22:34
 Operator : UM/SJ
 Sample : H5995-22
 Misc :
 ALS Vial : 15 Sample Multiplier: 1

Instrument :
 BNA_G
 ClientSampleId :
 DA889

Quant Time: Dec 16 05:41:18 2016
 Quant Method : Z:\HPCHEM1\BNA G\METHODS\SOM02.2-EPA-BG113016.M
 Quant Title : SVOA CALIBRATION
 QLast Update : Fri Dec 16 03:23:37 2016
 Response via : Initial Calibration

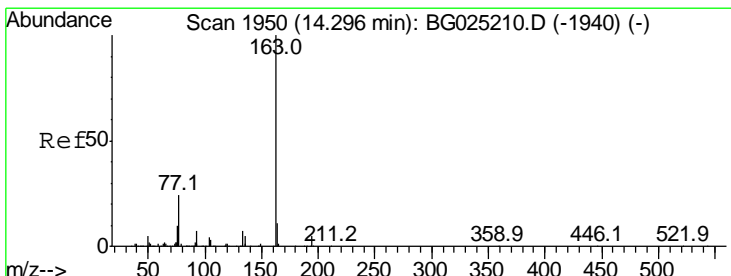
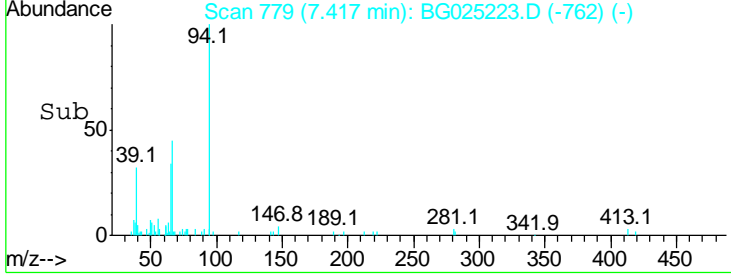
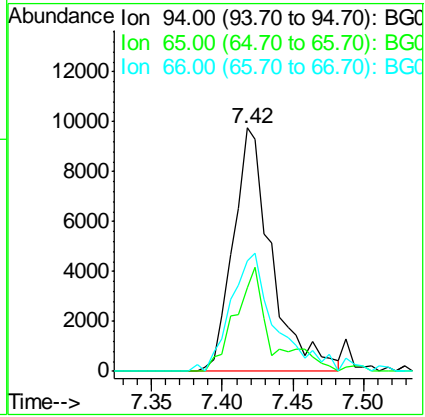
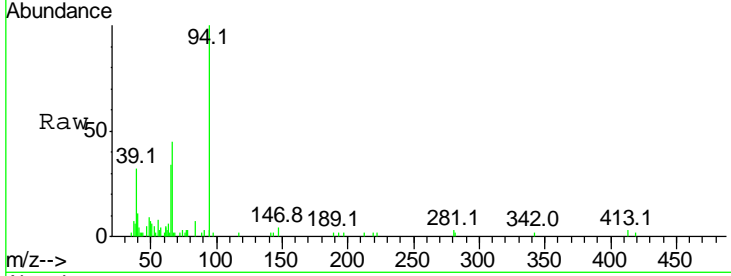




#6
 Phenol
 Concen: 3.35 ng/ul
 RT: 7.42 min Scan# 779
 Delta R.T. 0.00 min
 Lab File: BG025223.D
 Acq: 15 Dec 2016 22:34

Instrument :
 BNA_G
ClientSampled :
 DA889

Tgt Ion	Resp	Lower	Upper
94	18536		
65	34.2	26.8	40.2
66	45.3	44.4	66.6



#44
 Dimethylphthalate
 Concen: 4.34 ng/ul
 RT: 14.30 min Scan# 1950
 Delta R.T. 0.00 min
 Lab File: BG025223.D
 Acq: 15 Dec 2016 22:34

Tgt Ion	Resp	Lower	Upper
163	70046		
194	4.5	3.4	5.0
164	10.3	9.0	13.4

