

Data Path : Z:\svoasrv\HPCHEM1\BNA_G\Data\BG121523\
 Data File : BG060052.D
 Acq On : 16 Dec 2023 2:40
 Operator : MA/JU
 Sample : 05791-09
 Misc :
 ALS Vial : 23 Sample Multiplier: 1

Instrument :
 BNA_G
ClientSampleId :
 MW-1B-SOIL

Manual Integrations
APPROVED
 Reviewed By :Yogesh Patel 12/18/2023
 Supervised By :mohammad ahmed 12/18/2023

Quant Time: Dec 16 03:19:53 2023
 Quant Method : Z:\svoasrv\HPCHEM1\BNA_G\Methods\8270-BG121323.M
 Quant Title : ASP BNA STANDARDS FOR 5 POINT CALIBRATION
 QLast Update : Thu Dec 14 01:47:12 2023
 Response via : Initial Calibration

Compound	R.T.	QIon	Response	Conc	Units	Dev(Min)
Internal Standards						
1) 1,4-Dichlorobenzene-d4	7.953	152	61194	20.000	ng	0.00
21) Naphthalene-d8	10.762	136	243809	20.000	ng	# 0.00
39) Acenaphthene-d10	14.592	164	201100	20.000	ng	0.00
64) Phenanthrene-d10	17.342	188	656225	20.000	ng	0.00
76) Chrysene-d12	21.608	240	844222	20.000	ng	0.00
86) Perylene-d12	24.798	264	938430	20.000	ng	0.00
System Monitoring Compounds						
5) 2-Fluorophenol	5.527	112	451659	126.348	ng	0.00
7) Phenol-d6	7.113	99	596236	118.573	ng	0.00
23) Nitrobenzene-d5	9.116	82	457468	85.201	ng	0.00
42) 2,4,6-Tribromophenol	16.079	330	604556	128.998	ng	0.00
45) 2-Fluorobiphenyl	13.218	172	1374237	83.636	ng	0.00
79) Terphenyl-d14	19.963	244	3873393	83.766	ng	0.00
Target Compounds						Qvalue
32) Benzoic acid	9.974	122	15221m	6.089	ng	

(#) = qualifier out of range (m) = manual integration (+) = signals summed

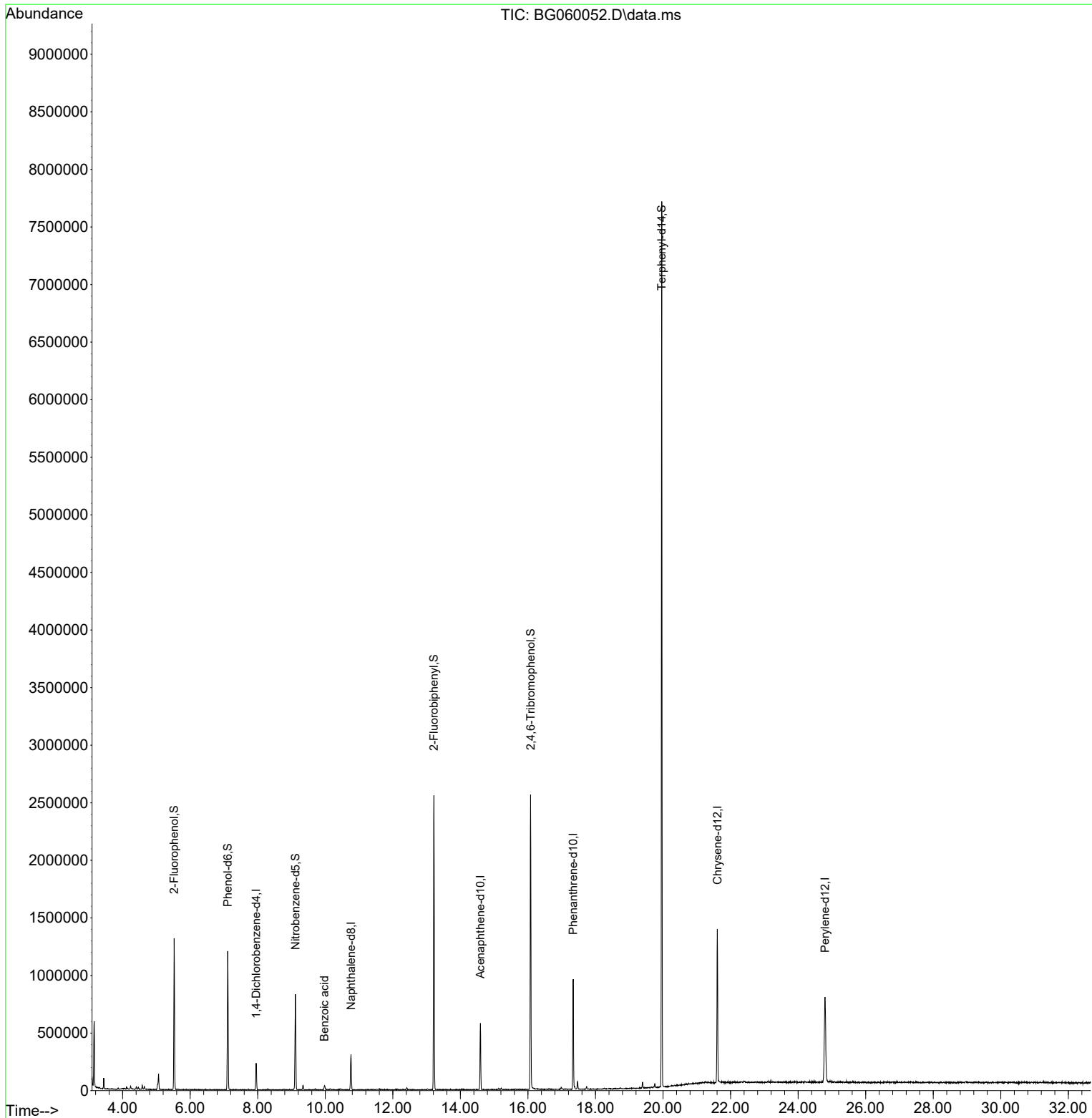
Data Path : Z:\svoasrv\HPCHEM1\BNA_G\Data\BG121523\
 Data File : BG060052.D
 Acq On : 16 Dec 2023 2:40
 Operator : MA/JU
 Sample : 05791-09
 Misc :
 ALS Vial : 23 Sample Multiplier: 1

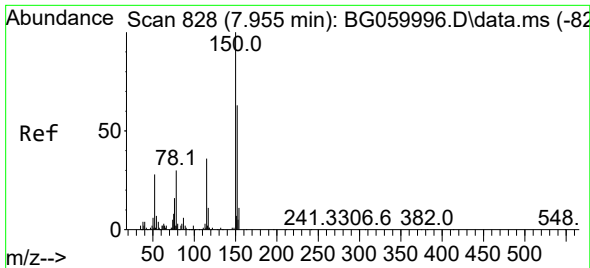
Instrument :
 BNA_G
ClientSampleId :
 MW-1B-SOIL

Manual Integrations
APPROVED

Reviewed By :Yogesh Patel 12/18/2023
 Supervised By :mohammad ahmed 12/18/2023

Quant Time: Dec 16 03:19:53 2023
 Quant Method : Z:\svoasrv\HPCHEM1\BNA_G\Methods\8270-BG121323.M
 Quant Title : ASP BNA STANDARDS FOR 5 POINT CALIBRATION
 QLast Update : Thu Dec 14 01:47:12 2023
 Response via : Initial Calibration





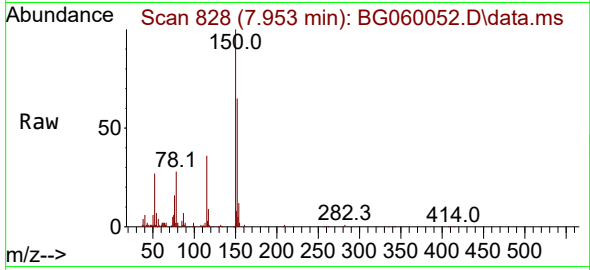
#1
 1,4-Dichlorobenzene-d4
 Concen: 20.000 ng
 RT: 7.953 min Scan# 81
 Delta R.T. -0.002 min
 Lab File: BG060052.D
 Acq: 16 Dec 2023 2:40

Instrument :

BNA_G

ClientSampleId :

MW-1B-SOIL



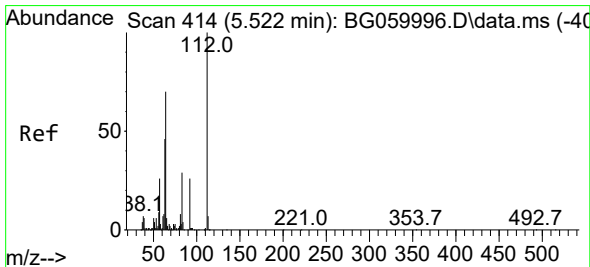
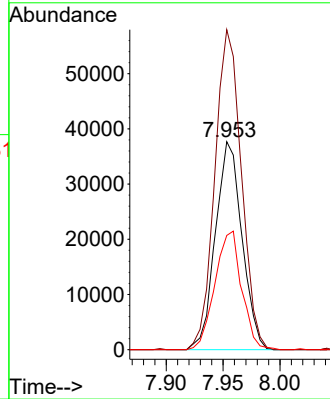
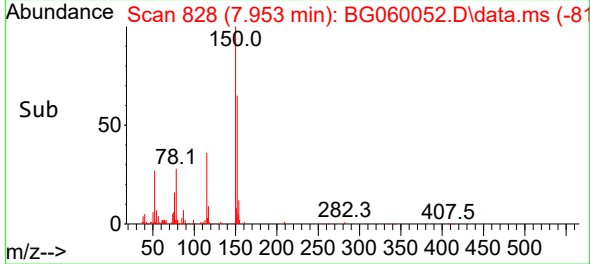
Tgt Ion:152 Resp: 61194
 Ion Ratio Lower Upper
 152 100
 150 153.8 127.0 190.6
 115 54.9 45.7 68.5

Manual Integrations

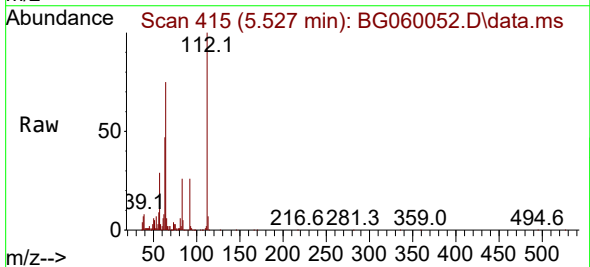
APPROVED

Reviewed By :Yogesh Patel 12/18/2023

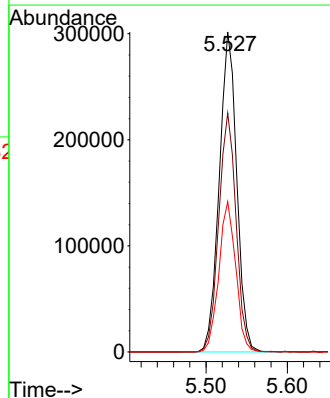
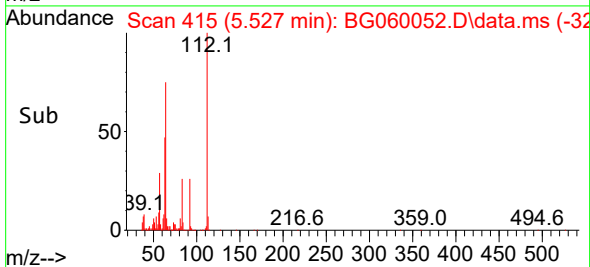
Supervised By :mohammad ahmed 12/18/2023

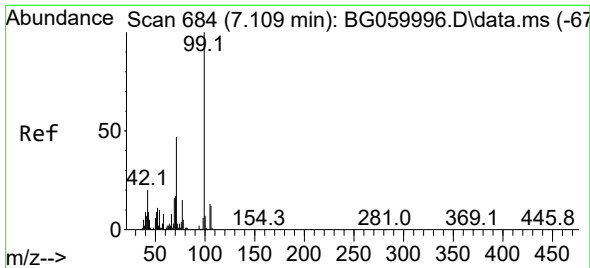


#5
 2-Fluorophenol
 Concen: 126.348 ng
 RT: 5.527 min Scan# 415
 Delta R.T. 0.005 min
 Lab File: BG060052.D
 Acq: 16 Dec 2023 2:40



Tgt Ion:112 Resp: 451659
 Ion Ratio Lower Upper
 112 100
 64 74.7 55.9 83.9
 63 46.9 36.5 54.7





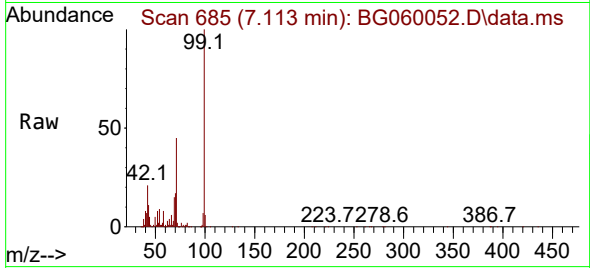
#7
 Phenol-d6
 Concen: 118.573 ng
 RT: 7.113 min Scan# 684
 Delta R.T. 0.004 min
 Lab File: BG060052.D
 Acq: 16 Dec 2023 2:40

Instrument :

BNA_G

ClientSampleId :

MW-1B-SOIL



Tgt Ion: 99 Resp: 596230

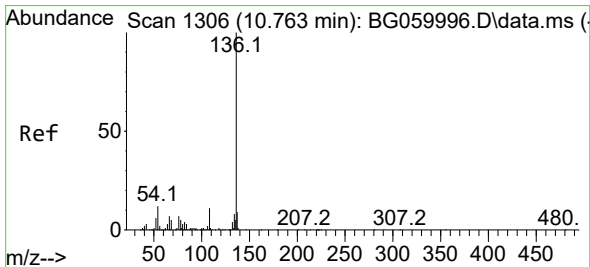
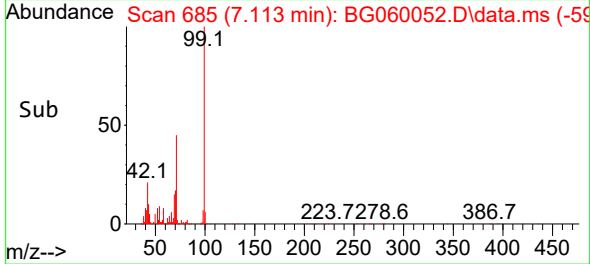
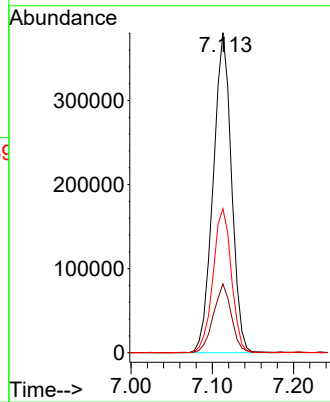
Ion	Ratio	Lower	Upper
99	100		
42	21.5	16.2	24.4
71	45.0	37.6	56.4

Manual Integrations

APPROVED

Reviewed By :Yogesh Patel 12/18/2023

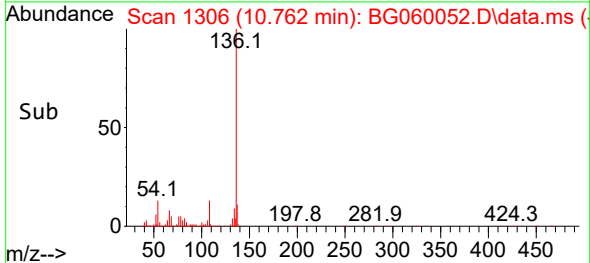
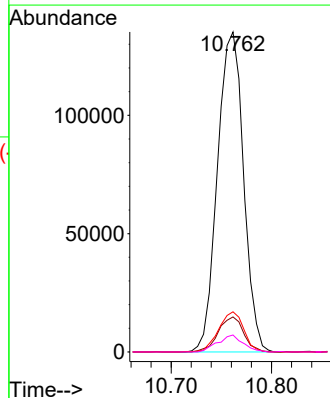
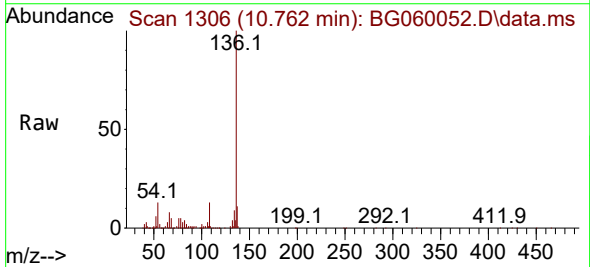
Supervised By :mohammad ahmed 12/18/2023

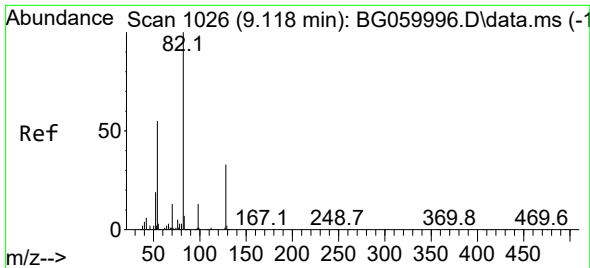


#21
 Naphthalene-d8
 Concen: 20.000 ng
 RT: 10.762 min Scan# 1306
 Delta R.T. -0.002 min
 Lab File: BG060052.D
 Acq: 16 Dec 2023 2:40

Tgt Ion:136 Resp: 243809

Ion	Ratio	Lower	Upper
136	100		
137	11.0	7.3	10.9
54	12.6	9.6	14.4
68	5.3	4.1	6.1





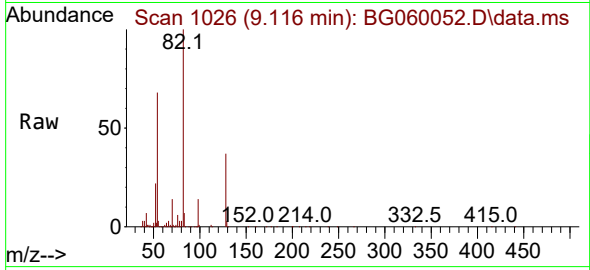
#23
 Nitrobenzene-d5
 Concen: 85.201 ng
 RT: 9.116 min Scan# 10
 Delta R.T. -0.002 min
 Lab File: BG060052.D
 Acq: 16 Dec 2023 2:40

Instrument :

BNA_G

ClientSampleId :

MW-1B-SOIL



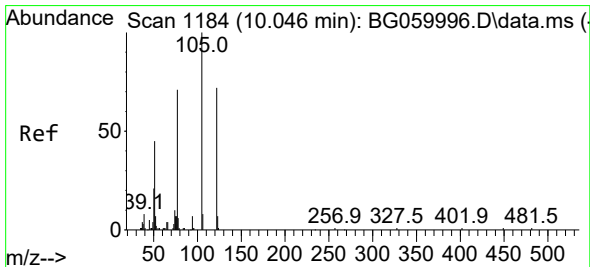
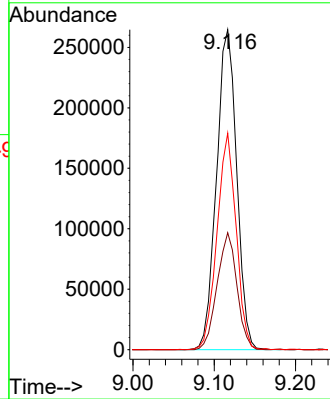
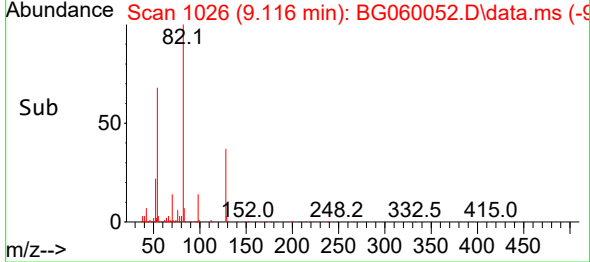
Tgt Ion: 82 Resp: 45746
 Ion Ratio Lower Upper
 82 100
 128 36.6 26.3 39.5
 54 67.6 44.3 66.5

Manual Integrations

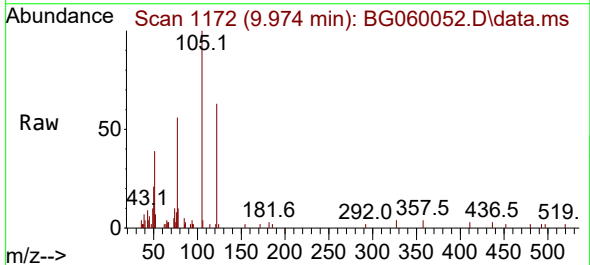
APPROVED

Reviewed By :Yogesh Patel 12/18/2023

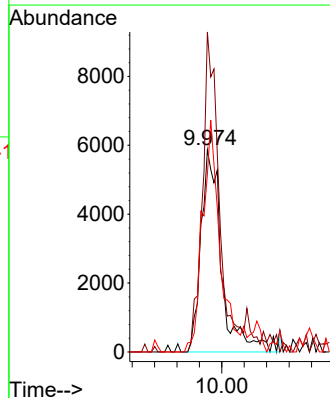
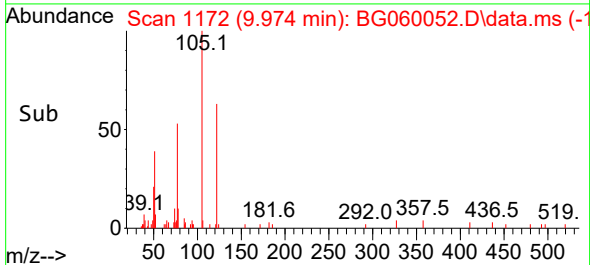
Supervised By :mohammad ahmed 12/18/2023

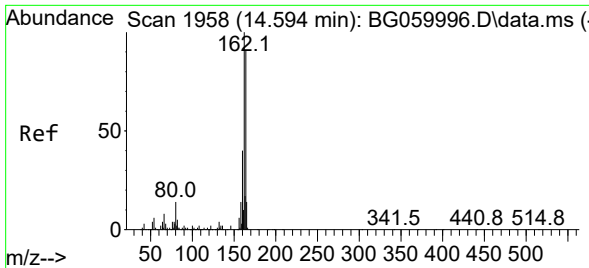


#32
 Benzoic acid
 Concen: 6.089 ng m
 RT: 9.974 min Scan# 1172
 Delta R.T. -0.072 min
 Lab File: BG060052.D
 Acq: 16 Dec 2023 2:40



Tgt Ion:122 Resp: 15221
 Ion Ratio Lower Upper
 122 100
 105 158.3 106.2 146.2#
 77 87.9 80.4 120.4





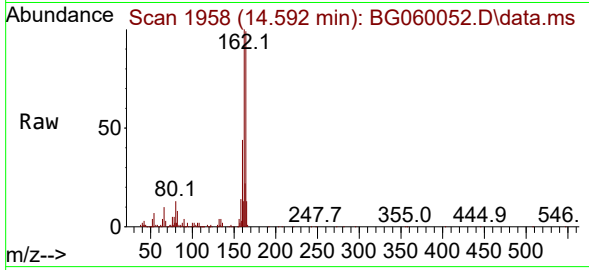
#39
 Acenaphthene-d10
 Concen: 20.000 ng
 RT: 14.592 min Scan# 1958
 Delta R.T. -0.002 min
 Lab File: BG060052.D
 Acq: 16 Dec 2023 2:40

Instrument :

BNA_G

Client Sample Id :

MW-1B-SOIL



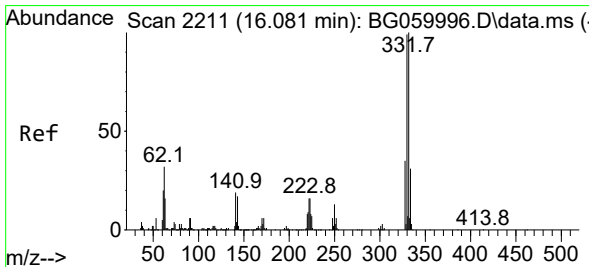
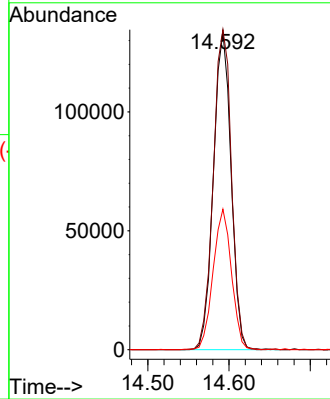
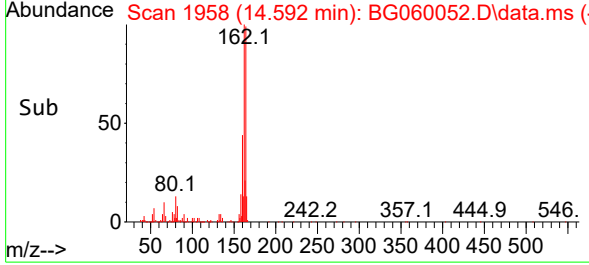
Tgt Ion:164 Resp: 201100
 Ion Ratio Lower Upper
 164 100
 162 100.8 88.1 132.1
 160 44.2 35.4 53.0

Manual Integrations

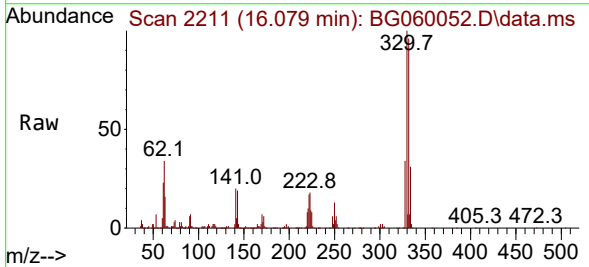
APPROVED

Reviewed By :Yogesh Patel 12/18/2023

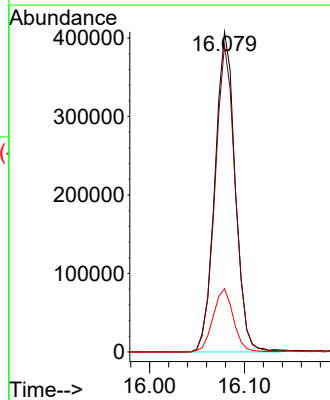
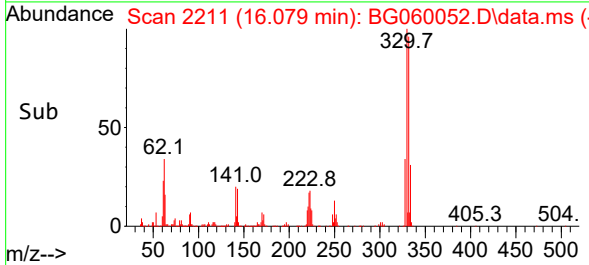
Supervised By :mohammad ahmed 12/18/2023

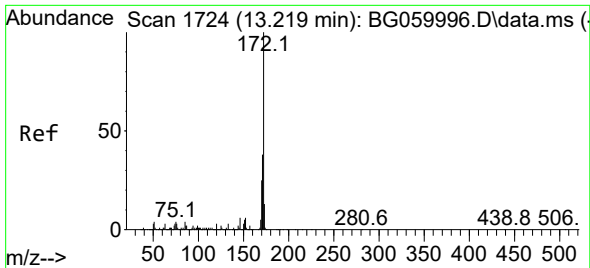


#42
 2,4,6-Tribromophenol
 Concen: 128.998 ng
 RT: 16.079 min Scan# 2211
 Delta R.T. -0.002 min
 Lab File: BG060052.D
 Acq: 16 Dec 2023 2:40



Tgt Ion:330 Resp: 604556
 Ion Ratio Lower Upper
 330 100
 332 95.7 76.2 114.4
 141 19.9 14.3 21.5





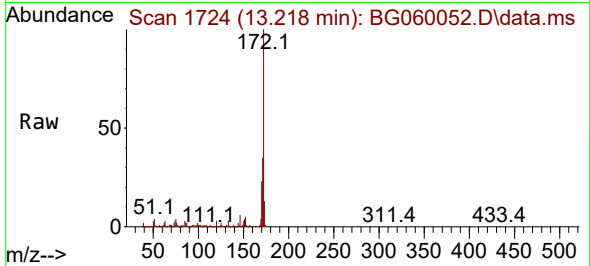
#45
 2-Fluorobiphenyl
 Concen: 83.636 ng
 RT: 13.218 min Scan# 1724
 Delta R.T. -0.002 min
 Lab File: BG060052.D
 Acq: 16 Dec 2023 2:40

Instrument :

BNA_G

ClientSampleId :

MW-1B-SOIL



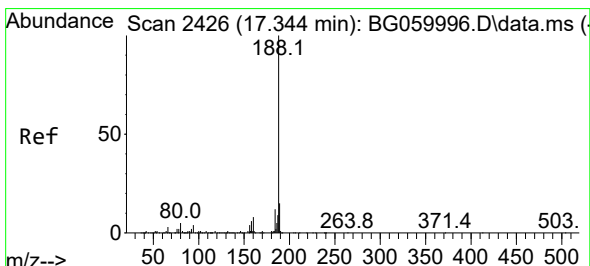
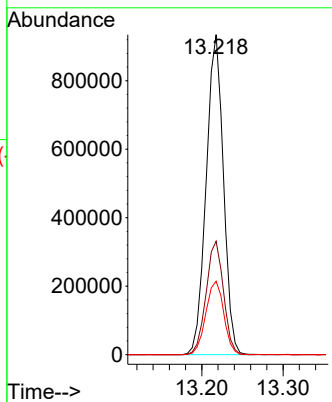
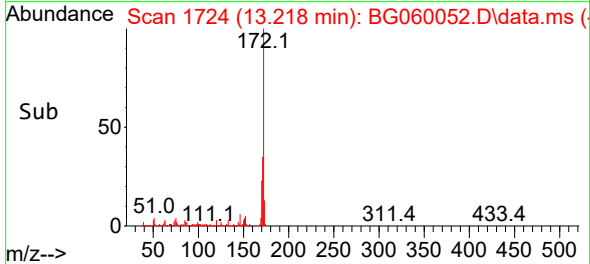
Tgt Ion:172 Resp: 137423
 Ion Ratio Lower Upper
 172 100
 171 35.5 30.1 45.1
 170 23.0 20.0 30.0

Manual Integrations

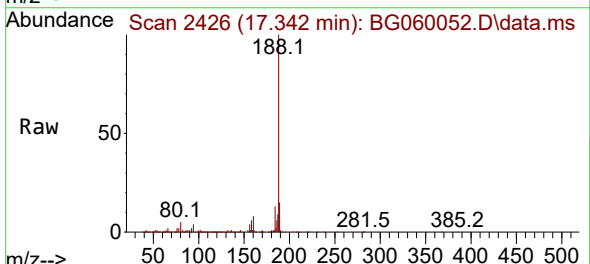
APPROVED

Reviewed By :Yogesh Patel 12/18/2023

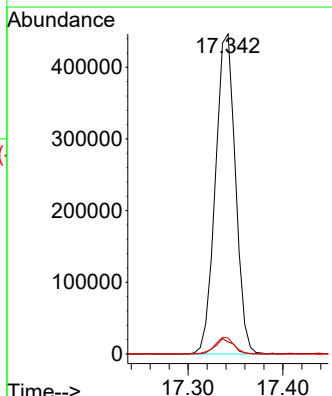
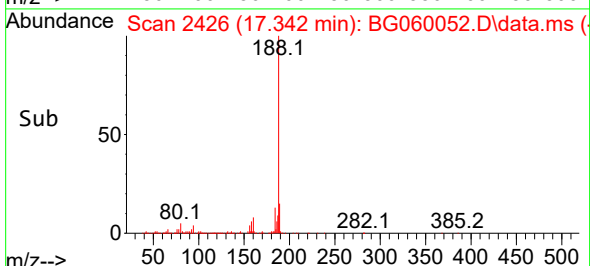
Supervised By :mohammad ahmed 12/18/2023

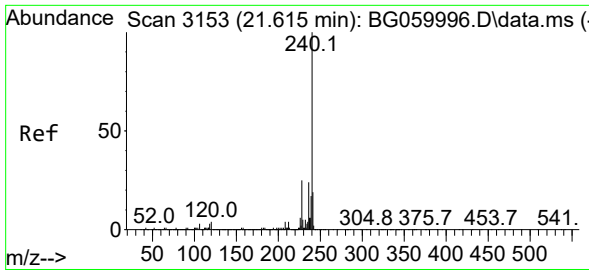


#64
 Phenanthrene-d10
 Concen: 20.000 ng
 RT: 17.342 min Scan# 2426
 Delta R.T. -0.002 min
 Lab File: BG060052.D
 Acq: 16 Dec 2023 2:40



Tgt Ion:188 Resp: 656225
 Ion Ratio Lower Upper
 188 100
 94 3.8 3.0 4.6
 80 5.0 4.0 6.0





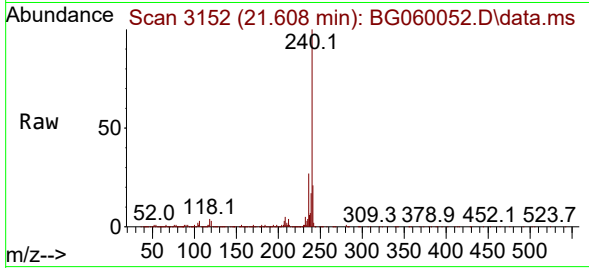
#76
 Chrysene-d12
 Concen: 20.000 ng
 RT: 21.608 min Scan# 3153
 Delta R.T. -0.008 min
 Lab File: BG060052.D
 Acq: 16 Dec 2023 2:40

Instrument :

BNA_G

Client Sample Id :

MW-1B-SOIL



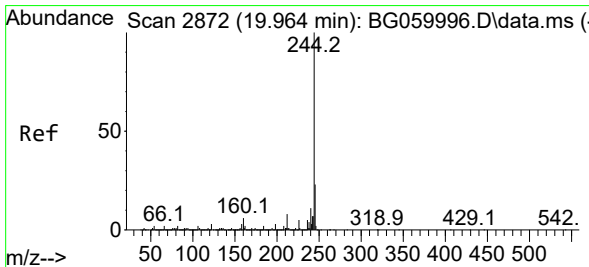
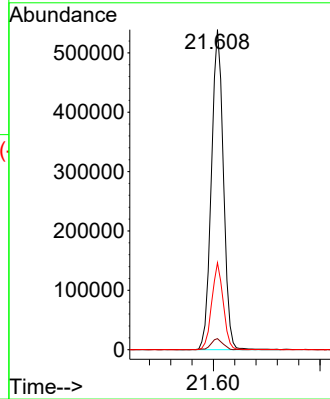
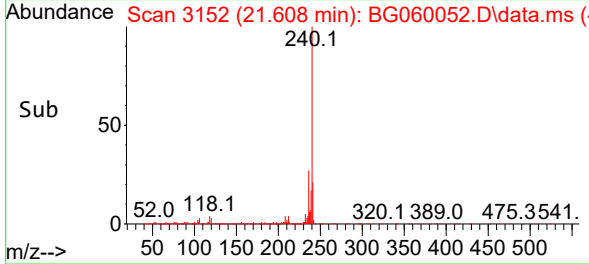
Tgt Ion:240 Resp: 84422
 Ion Ratio Lower Upper
 240 100
 120 3.4 2.9 4.3
 236 27.2 19.4 29.2

Manual Integrations

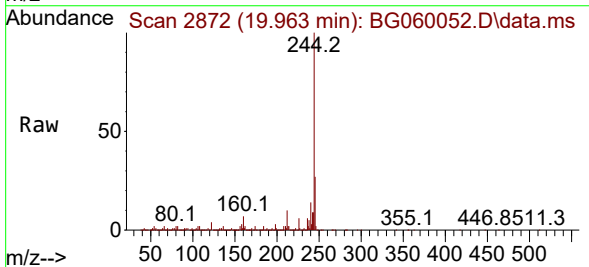
APPROVED

Reviewed By :Yogesh Patel 12/18/2023

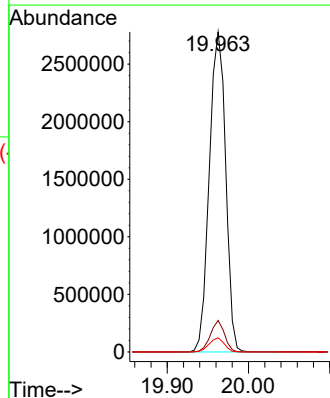
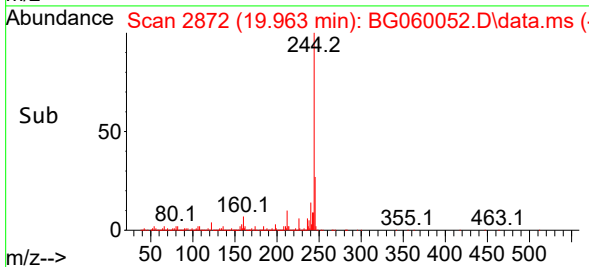
Supervised By :mohammad ahmed 12/18/2023

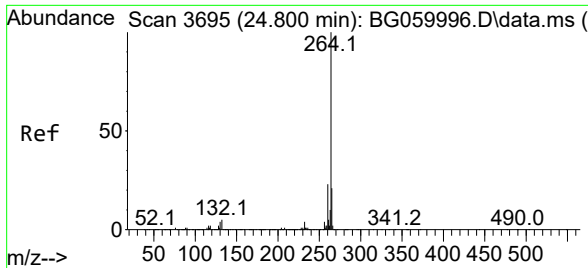


#79
 Terphenyl-d14
 Concen: 83.766 ng
 RT: 19.963 min Scan# 2872
 Delta R.T. -0.002 min
 Lab File: BG060052.D
 Acq: 16 Dec 2023 2:40



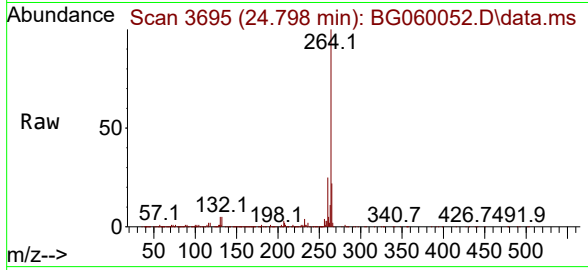
Tgt Ion:244 Resp: 3873393
 Ion Ratio Lower Upper
 244 100
 212 9.8 6.8 10.2
 122 4.4 2.6 3.8





#86
 Perylene-d12
 Concen: 20.000 ng
 RT: 24.798 min Scan# 30
 Delta R.T. -0.002 min
 Lab File: BG060052.D
 Acq: 16 Dec 2023 2:40

Instrument :
 BNA_G
 Client Sample Id :
 MW-1B-SOIL



Tgt Ion: 264 Resp: 938430

Ion	Ratio	Lower	Upper
264	100		
260	25.4	18.5	27.7
265	22.1	17.3	25.9

Manual Integrations
APPROVED
 Reviewed By :Yogesh Patel 12/18/2023
 Supervised By :mohammad ahmed 12/18/2023

