

Data Path : Z:\HPCHEM1\BNA\_G\DATA\BG121615\  
 Data File : BG020207.D  
 Acq On : 16 Dec 2015 2:35  
 Operator : UM/SJ  
 Sample : G4786-18  
 Misc :  
 ALS Vial : 53 Sample Multiplier: 1

Instrument :  
 BNA\_G  
 ClientSampleId :  
 G9C91

Quant Time: Dec 16 03:50:11 2015  
 Quant Method : Z:\HPCHEM1\BNA\_G\METHODS\SOM02.2-EPA-BG121415.M  
 Quant Title : SVOA CALIBRATION  
 QLast Update : Wed Dec 16 03:45:51 2015  
 Response via : Initial Calibration

Internal Standards	R.T.	QIon	Response	Conc	Units	Dev(Min)
1) 1,4-Dichlorobenzene-d4	8.09	152	17785	20.00	ng/ul	0.00
18) Naphthalene-d8	10.91	136	84110	20.00	ng/ul	0.00
36) Acenaphthene-d10	14.73	164	70574	20.00	ng/ul	0.00
62) Phenanthrene-d10	17.47	188	183433	20.00	ng/ul	0.00
78) Chrysene-d12	21.74	240	198825	20.00	ng/ul	0.00
86) Perylene-d12	25.01	264	187458	20.00	ng/ul	0.00

## System Monitoring Compounds

3) 1,4-Dioxane-d8	3.47	96	384	1.19	ng/uL	0.00
5) Phenol-d5	7.24	99	12198	7.78	ng/ul	0.00
7) Bis-(2-Chloroethyl)ether-d	7.41	67	30401	32.49	ng/ul	0.00
9) 2-Chlorophenol-d4	7.62	132	32039	28.09	ng/ul	0.00
13) 4-Methylphenol-d8	8.80	113	24205	18.05	ng/ul	0.00
19) Nitrobenzene-d5	9.26	128	21542	32.86	ng/ul	0.00
22) 2-Nitrophenol-d4	9.99	143	26190	35.90	ng/ul	0.00
26) 2,4-Dichlorophenol-d3	10.53	165	46929	31.76	ng/ul	0.00
29) 4-Chloroaniline-d4	11.04	131	4278	2.58	ng/ul	0.00
44) Dimethylphthalate-d6	14.13	166	186883	32.74	ng/ul	0.00
47) Acenaphthylene-d8	14.42	160	216818	32.64	ng/ul	0.00
52) 4-Nitrophenol-d4	14.91	143	6167	6.02	ng/ul	0.00
58) Fluorene-d10	15.71	176	170150	32.86	ng/ul	0.00
63) 4,6-Dinitro-2-methylphenol	15.83	200	33668	30.96	ng/ul	0.00
71) Anthracene-d10	17.57	188	280216	33.15	ng/ul	0.00
79) Pyrene-d10	19.85	212	310093	33.46	ng/ul	0.00
90) Benzo(a)pyrene-d12	24.79	264	319370	34.16	ng/ul	0.00

## Target Compounds

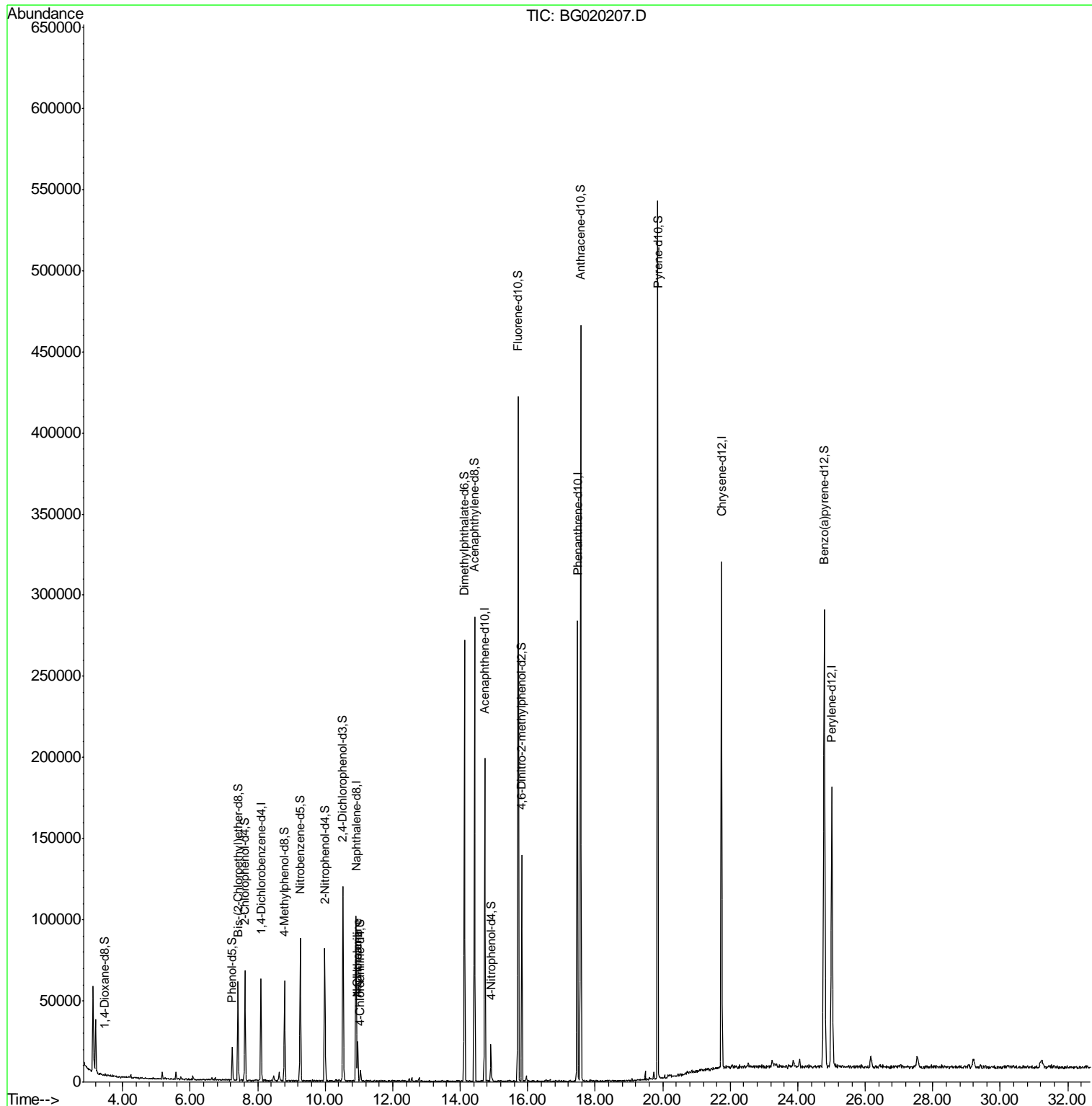
					Qvalue
28) Naphthalene	10.97	128	20366	4.64 ng/ul	98
30) 4-Chloroaniline	10.96	127	2780	1.64 ng/ul#	21

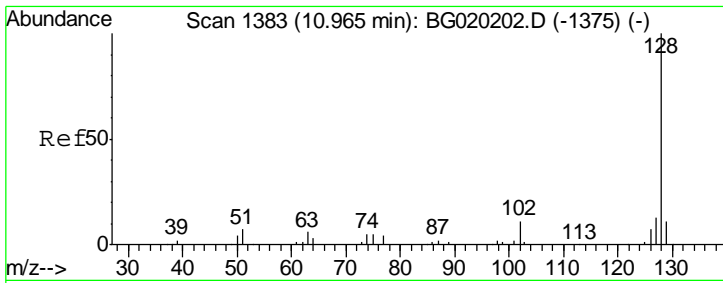
(#) = qualifier out of range (m) = manual integration (+) = signals summed

Data Path : Z:\HPCHEM1\BNA\_G\DATA\BG121615\  
 Data File : BG020207.D  
 Acq On : 16 Dec 2015 2:35  
 Operator : UM/SJ  
 Sample : G4786-18  
 Misc :  
 ALS Vial : 53 Sample Multiplier: 1

Instrument :  
 BNA\_G  
 ClientSampleId :  
 G9C91

Quant Time: Dec 16 03:50:11 2015  
 Quant Method : Z:\HPCHEM1\BNA\_G\METHODS\SOM02.2-EPA-BG121415.M  
 Quant Title : SVOA CALIBRATION  
 QLast Update : Wed Dec 16 03:45:51 2015  
 Response via : Initial Calibration

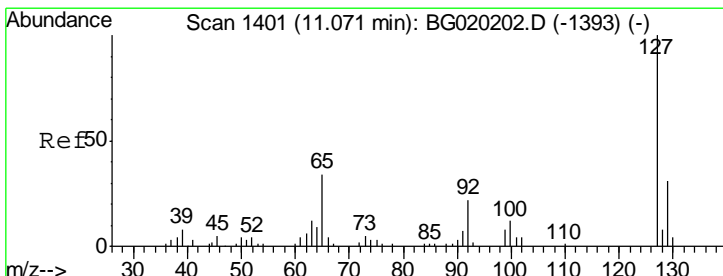
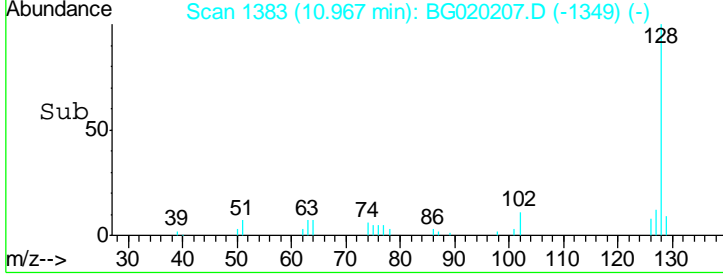
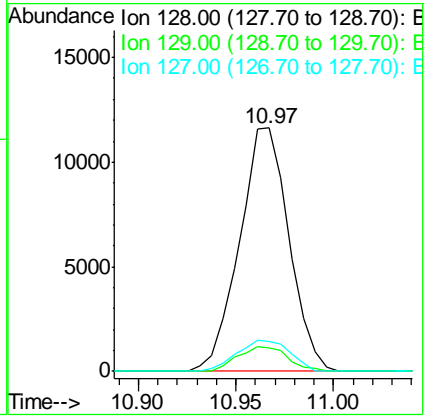
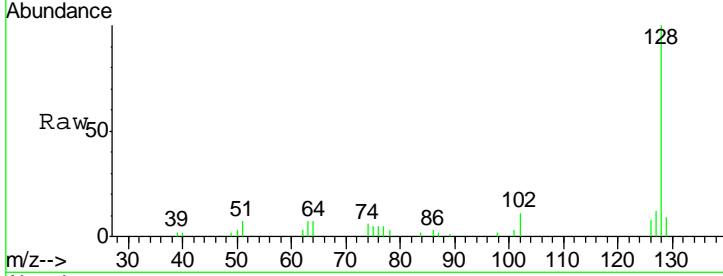




#28  
 Naphthalene  
 Concen: 4.64 ng/ul  
 RT: 10.97 min Scan# 1383  
 Delta R.T. 0.00 min  
 Lab File: BG020207.D  
 Acq: 16 Dec 2015 2:35

**Instrument :**  
 BNA\_G  
**ClientSampled :**  
 G9C91

Tgt Ion	Resp	Lower	Upper
128	100		
129	9.4	8.6	12.8
127	12.3	10.1	15.1



#30  
 4-Chloroaniline  
 Concen: 1.64 ng/ul  
 RT: 10.96 min Scan# 1382  
 Delta R.T. -0.11 min  
 Lab File: BG020207.D  
 Acq: 16 Dec 2015 2:35

Tgt Ion	Resp	Lower	Upper
127	100		
129	76.1	25.7	38.5#

