

Data Path : Z:\HPCHEM1\BNA_G\DATA\BG121715\
 Data File : BG020227.D
 Acq On : 16 Dec 2015 18:17
 Operator : UM/SJ
 Sample : SSTDCCC020
 Misc :
 ALS Vial : 2 Sample Multiplier: 1

Instrument :
 BNA_G
 ClientSampleId :
 SSTD02040

Quant Time: Dec 17 00:44:20 2015
 Quant Method : Z:\HPCHEM1\BNA_G\METHODS\SOM02.2-EPA-BG121415.M
 Quant Title : SVOA CALIBRATION
 QLast Update : Thu Dec 17 00:37:15 2015
 Response via : Initial Calibration

Internal Standards	R.T.	QIon	Response	Conc	Units	Dev(Min)
1) 1,4-Dichlorobenzene-d4	8.10	152	29583	20.00	ng/ul	0.00
18) Naphthalene-d8	10.92	136	133277	20.00	ng/ul	0.00
36) Acenaphthene-d10	14.73	164	99255	20.00	ng/ul	0.00
62) Phenanthrene-d10	17.47	188	258583	20.00	ng/ul	0.00
78) Chrysene-d12	21.74	240	290062	20.00	ng/ul	0.00
86) Perylene-d12	25.01	264	277127	20.00	ng/ul	0.00

System Monitoring Compounds

3) 1,4-Dioxane-d8	3.47	96	4125	7.70	ng/uL	0.00
5) Phenol-d5	7.25	99	52822	20.25	ng/ul	0.00
7) Bis-(2-Chloroethyl)ether-d	7.41	67	31964	20.54	ng/ul	0.00
9) 2-Chlorophenol-d4	7.63	132	41132	21.68	ng/ul	0.00
13) 4-Methylphenol-d8	8.80	113	46615	20.90	ng/ul	0.00
19) Nitrobenzene-d5	9.26	128	22179	21.35	ng/ul	0.00
22) 2-Nitrophenol-d4	9.99	143	25174	21.78	ng/ul	0.00
26) 2,4-Dichlorophenol-d3	10.53	165	50603	21.61	ng/ul	0.00
29) 4-Chloroaniline-d4	11.05	131	59241	22.52	ng/ul	0.00
44) Dimethylphthalate-d6	14.13	166	164610	20.50	ng/ul	0.00
47) Acenaphthylene-d8	14.42	160	192736	20.63	ng/ul	0.00
52) 4-Nitrophenol-d4	14.92	143	28182	19.57	ng/ul	0.00
58) Fluorene-d10	15.72	176	149434	20.52	ng/ul	0.00
63) 4,6-Dinitro-2-methylphenol	15.83	200	31424	20.50	ng/ul	0.00
71) Anthracene-d10	17.57	188	243219	20.41	ng/ul	0.00
79) Pyrene-d10	19.85	212	272536	20.16	ng/ul	0.00
90) Benzo(a)pyrene-d12	24.78	264	283617	20.52	ng/ul	0.00

Target Compounds

Target Compounds	R.T.	QIon	Response	Conc	Units	Qvalue
2) 1,4-Dioxane	3.51	88	5921	7.48	ng/uL	96
4) Benzaldehyde	7.23	77	36767	21.77	ng/ul	96
6) Phenol	7.27	94	57283	20.51	ng/ul	96
8) Bis(2-Chloroethyl)ether	7.51	93	39224	20.47	ng/ul	95
10) 2-Chlorophenol	7.66	128	41993	21.13	ng/ul	96
11) 2-Methylphenol	8.54	108	43748	20.53	ng/ul	91
12) 2,2'-oxybis(1-Chloropropan	8.63	45	53655	19.44	ng/ul	100
14) Acetophenone	8.92	105	71638	20.51	ng/ul	99
15) N-Nitroso-di-n-propylamine	8.91	70	37827	20.46	ng/ul	98
16) 4-Methylphenol	8.87	108	49338	20.92	ng/ul	98
17) Hexachloroethane	9.19	117	17099	20.48	ng/ul	97
20) Nitrobenzene	9.31	77	56322	20.46	ng/ul	98
21) Isophorone	9.83	82	105252	20.03	ng/ul	99
23) 2-Nitrophenol	10.02	139	26687	21.53	ng/ul	95
24) 2,4-Dimethylphenol	10.08	107	59179	21.02	ng/ul	97
25) Bis(2-Chloroethoxy)methane	10.31	93	56733	19.93	ng/ul	98
27) 2,4-Dichlorophenol	10.56	162	51596	21.45	ng/ul	93
28) Naphthalene	10.97	128	145558	20.91	ng/ul	98
30) 4-Chloroaniline	11.07	127	60450	22.51	ng/ul	98
31) Hexachlorobutadiene	11.24	225	36958	20.61	ng/ul	95
32) Caprolactam	11.83	113	14186	16.71	ng/ul	91
33) 4-Chloro-3-methylphenol	12.19	107	59206	20.71	ng/ul	94
34) 2-Methylnaphthalene	12.56	142	109554	20.61	ng/ul	96

Data Path : Z:\HPCHEM1\BNA_G\DATA\BG121715\
 Data File : BG020227.D
 Acq On : 16 Dec 2015 18:17
 Operator : UM/SJ
 Sample : SSTDCCC020
 Misc :
 ALS Vial : 2 Sample Multiplier: 1

Instrument :
 BNA_G
 ClientSampleId :
 SSTD02040

Quant Time: Dec 17 00:44:20 2015
 Quant Method : Z:\HPCHEM1\BNA_G\METHODS\SOM02.2-EPA-BG121415.M
 Quant Title : SVOA CALIBRATION
 QLast Update : Thu Dec 17 00:37:15 2015
 Response via : Initial Calibration

Internal Standards	R.T.	QIon	Response	Conc	Units	Dev(Min)
35) 1-Methylnaphthalene	12.78	142	106230	20.78	ng/ul#	95
37) 1,2,4,5-Tetrachlorobenzene	12.93	216	76918	20.65	ng/ul	99
38) Hexachlorocyclopentadiene	12.91	237	43994	19.11	ng/ul	96
39) 2,4,6-Trichlorophenol	13.17	196	50186	21.00	ng/ul	99
40) 2,4,5-Trichlorophenol	13.24	196	55985	21.08	ng/ul	99
41) 1,1'-Biphenyl	13.56	154	154136	20.58	ng/ul	96
42) 2-Chloronaphthalene	13.61	162	122479	20.43	ng/ul	98
43) 2-Nitroaniline	13.81	65	42276	20.74	ng/ul	98
45) Dimethylphthalate	14.18	163	168284	20.52	ng/ul	99
46) 2,6-Dinitrotoluene	14.30	165	35304	20.81	ng/ul	94
48) Acenaphthylene	14.45	152	203796	20.54	ng/ul	98
49) 3-Nitroaniline	14.63	138	35545	21.59	ng/ul	96
50) Acenaphthene	14.79	153	136964	20.51	ng/ul	99
51) 2,4-Dinitrophenol	14.83	184	18381	19.04	ng/ul	99
53) 4-Nitrophenol	14.93	109	27589	19.92	ng/ul	98
54) Dibenzofuran	15.12	168	205462	20.69	ng/ul	99
55) 2,4-Dinitrotoluene	15.08	165	53652	21.55	ng/ul	98
56) 2,3,4,6-Tetrachlorophenol	15.35	232	54056	21.17	ng/ul#	98
57) Diethylphthalate	15.53	149	173901	20.44	ng/ul	99
59) Fluorene	15.77	166	164577	20.63	ng/ul	98
60) 4-Chlorophenyl-phenylether	15.76	204	93551	20.80	ng/ul	98
61) 4-Nitroaniline	15.79	138	38205	21.46	ng/ul	95
64) 4,6-Dinitro-2-methylphenol	15.85	198	33535	20.38	ng/ul	96
65) N-Nitrosodiphenylamine	15.97	169	149338	20.77	ng/ul	98
66) 4-Bromophenyl-phenylether	16.66	248	64677	21.31	ng/ul	98
67) Hexachlorobenzene	16.77	284	68643	21.06	ng/ul	100
68) Atrazine	16.92	200	64335	20.98	ng/ul	97
69) Pentachlorophenol	17.11	266	39303	20.00	ng/ul	100
70) Phenanthrene	17.51	178	287571	20.33	ng/ul	99
72) Anthracene	17.60	178	292209	20.37	ng/ul	97
73) 1,2,3,4-Tetrachlorobenzene	13.53	216	83856	20.70	ng/uL	95
74) Pentachlorobenzene	15.05	250	78551	20.91	ng/uL	96
75) Carbazole	17.87	167	250313	20.77	ng/ul	100
76) Di-n-butylphthalate	18.42	149	288874	20.62	ng/ul	98
77) Fluoranthene	19.52	202	349711	21.16	ng/ul	98
80) Pyrene	19.88	202	347661	19.80	ng/ul	100
81) Butylbenzylphthalate	20.75	149	125591	20.59	ng/ul	95
82) 3,3'-Dichlorobenzidine	21.63	252	113609	21.44	ng/ul	95
83) Benzo(a)anthracene	21.72	228	349109	20.63	ng/ul	99
84) Bis(2-ethylhexyl)phthalate	21.62	149	176032	20.18	ng/ul	99
85) Chrysene	21.79	228	323888	20.32	ng/ul	99
87) Di-n-octyl phthalate	22.84	149	306350	20.12	ng/ul	100
88) Benzo(b)fluoranthene	23.97	252	335634	20.12	ng/ul	98
89) Benzo(k)fluoranthene	24.04	252	325831	20.36	ng/ul	99
91) Benzo(a)pyrene	24.86	252	323007	20.43	ng/ul	99
92) Indeno(1,2,3-cd)pyrene	28.74	276	382438	20.31	ng/ul	96
93) Dibenzo(a,h)anthracene	28.80	278	319360	20.43	ng/ul	98
94) Benzo(g,h,i)perylene	29.91	276	307939	19.95	ng/ul	97

Data Path : Z:\HPCHEM1\BNA_G\DATA\BG121715\
 Data File : BG020227.D
 Acq On : 16 Dec 2015 18:17
 Operator : UM/SJ
 Sample : SSTDCCC020
 Misc :
 ALS Vial : 2 Sample Multiplier: 1

Instrument :
 BNA_G
ClientSampleId :
 SSTD02040

Quant Time: Dec 17 00:44:20 2015
 Quant Method : Z:\HPCHEM1\BNA_G\METHODS\SOM02.2-EPA-BG121415.M
 Quant Title : SVOA CALIBRATION
 QLast Update : Thu Dec 17 00:37:15 2015
 Response via : Initial Calibration

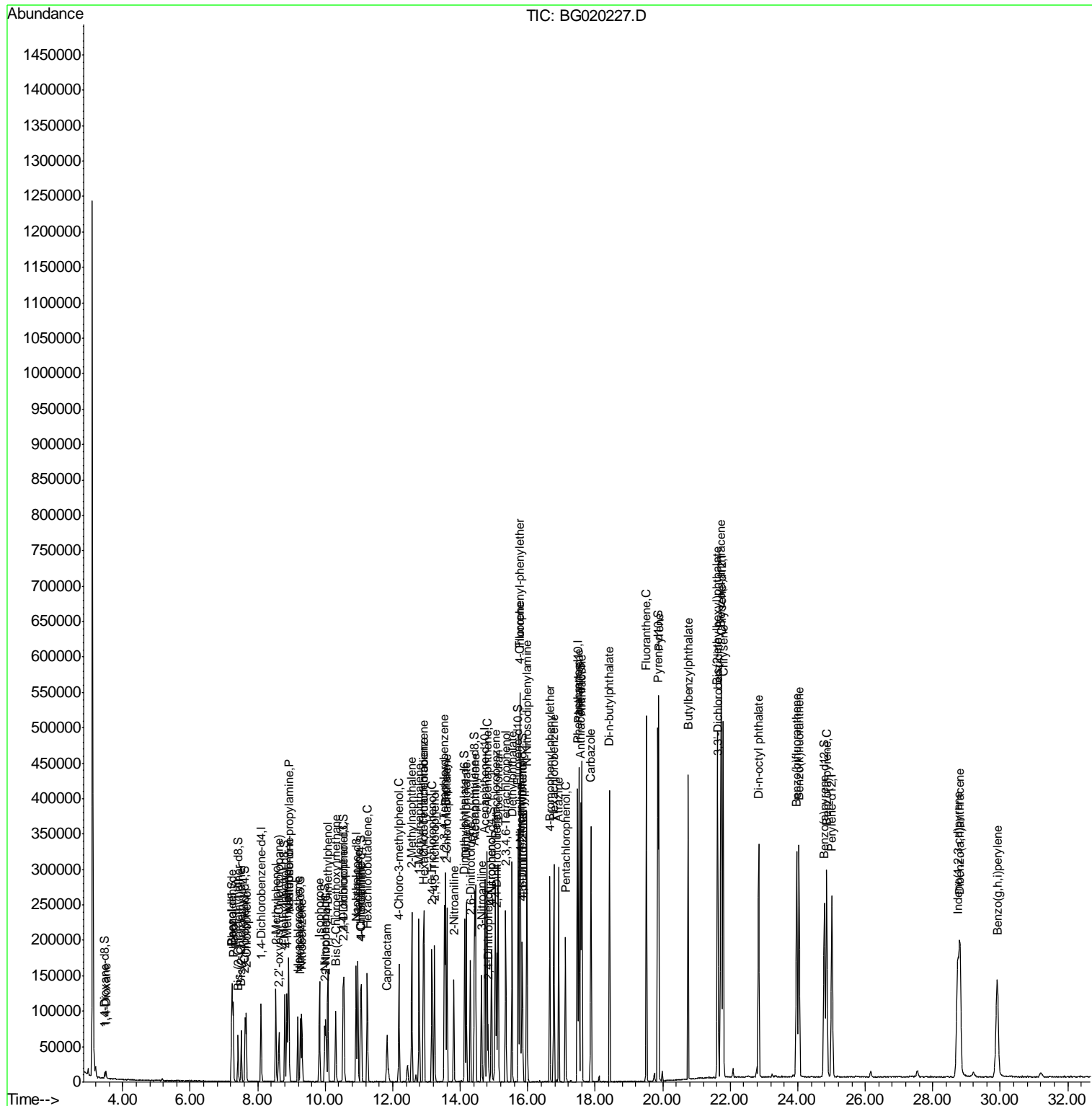
Internal Standards	R.T.	QIon	Response	Conc	Units	Dev(Min)

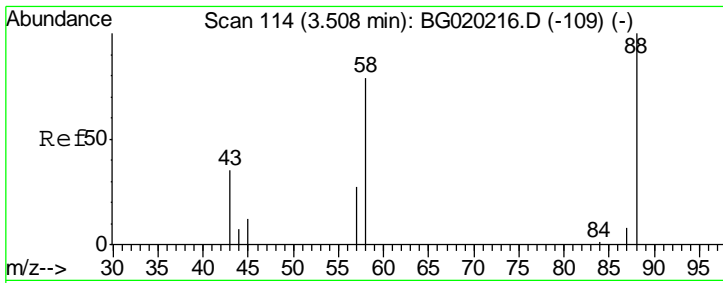
(#) = qualifier out of range (m) = manual integration (+) = signals summed						

Data Path : Z:\HPCHEM1\BNA_G\DATA\BG121715\
 Data File : BG020227.D
 Acq On : 16 Dec 2015 18:17
 Operator : UM/SJ
 Sample : SSTDCCC020
 Misc :
 ALS Vial : 2 Sample Multiplier: 1

Instrument :
 BNA_G
 Client Sampled :
 SSTD02040

Quant Time: Dec 17 00:44:20 2015
 Quant Method : Z:\HPCHEM1\BNA_G\METHODS\SOM02.2-EPA-BG121415.M
 Quant Title : SVOA CALIBRATION
 QLast Update : Thu Dec 17 00:37:15 2015
 Response via : Initial Calibration

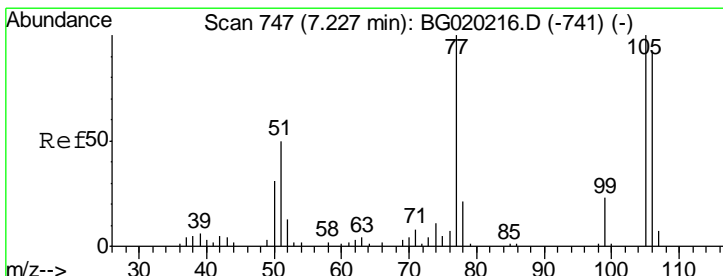
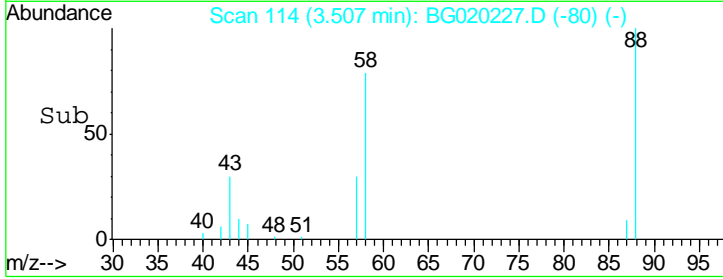
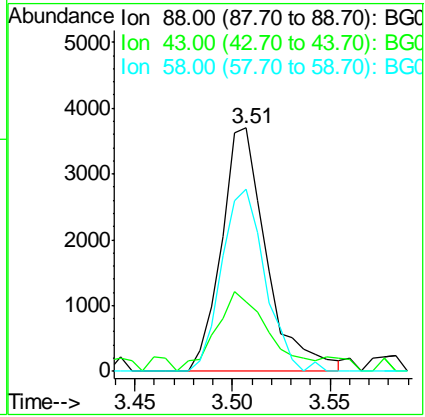
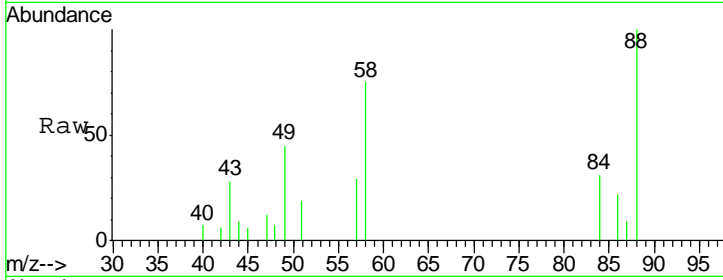




#2
 1,4-Dioxane
 Concen: 7.48 ng/uL
 RT: 3.51 min Scan# 114
 Delta R.T. -0.00 min
 Lab File: BG020227.D
 Acq: 16 Dec 2015 18:17

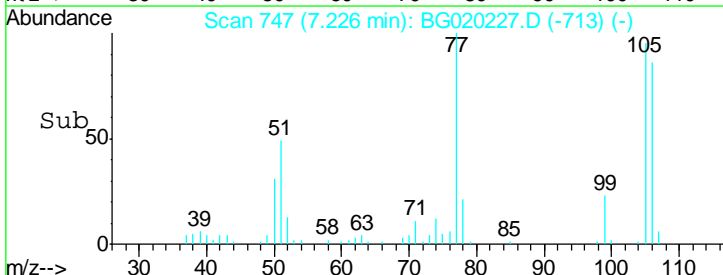
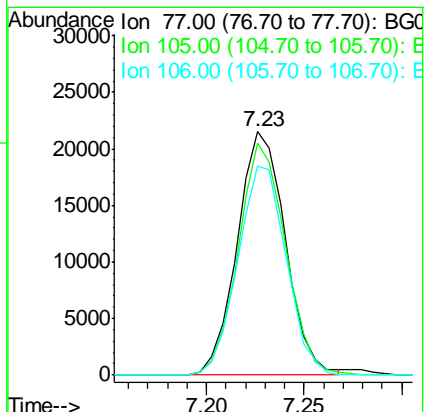
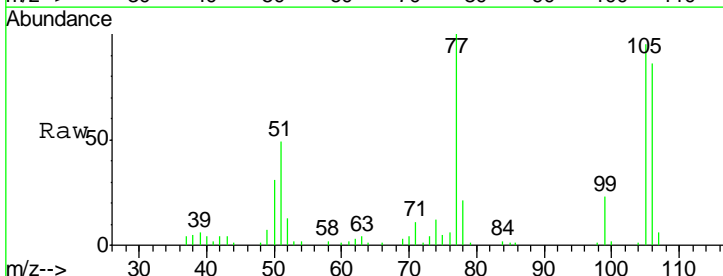
Instrument :
 BNA_G
ClientSampled :
 SST02040

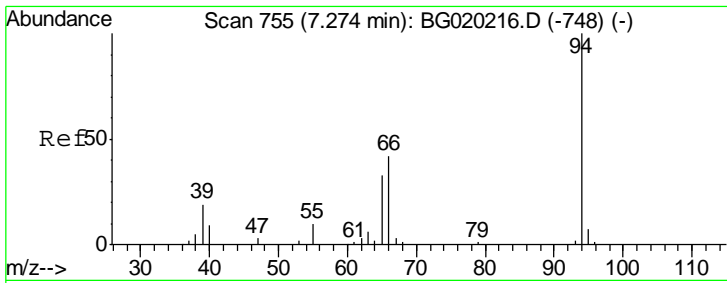
Tgt Ion	Resp	Lower	Upper
88	5921		
88	100		
43	28.4	27.8	41.8
58	75.0	59.9	89.9



#4
 Benzaldehyde
 Concen: 21.77 ng/uL
 RT: 7.23 min Scan# 747
 Delta R.T. -0.00 min
 Lab File: BG020227.D
 Acq: 16 Dec 2015 18:17

Tgt Ion	Resp	Lower	Upper
77	36767		
77	100		
105	95.2	77.8	116.6
106	85.6	72.6	109.0

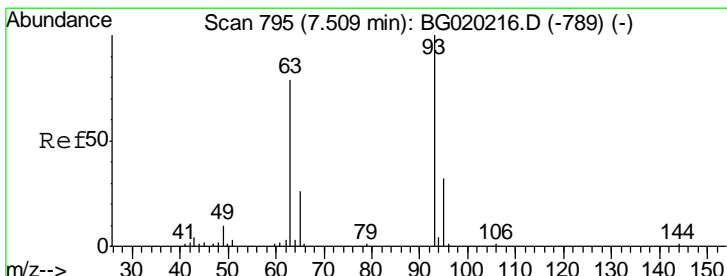
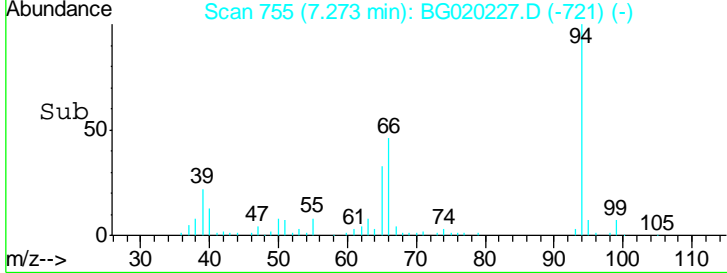
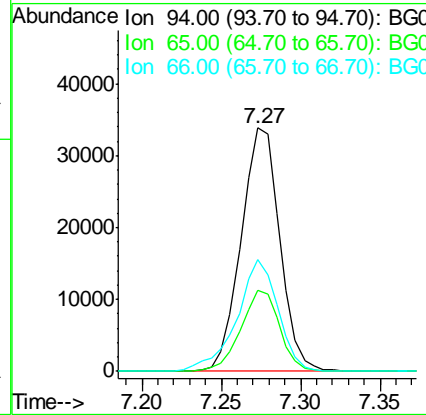
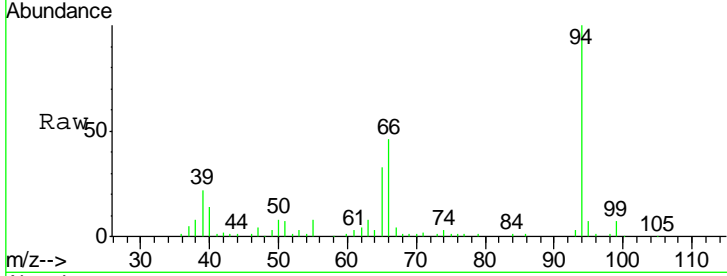




#6
 Phenol
 Concen: 20.51 ng/ul
 RT: 7.27 min Scan# 755
 Delta R.T. -0.00 min
 Lab File: BG020227.D
 Acq: 16 Dec 2015 18:17

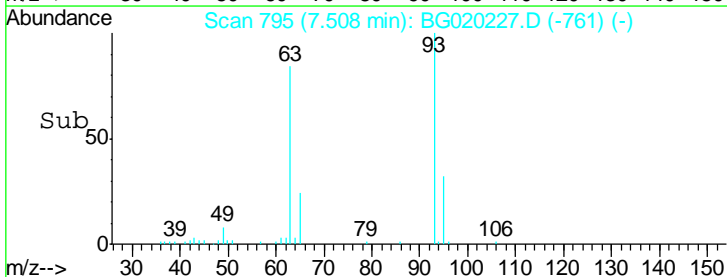
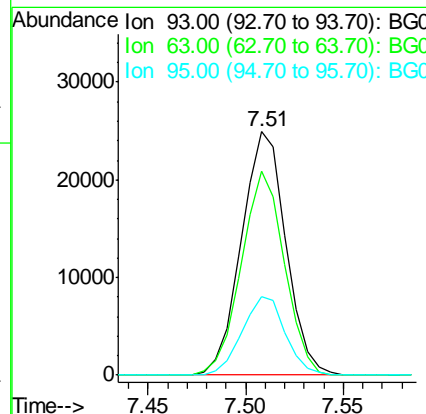
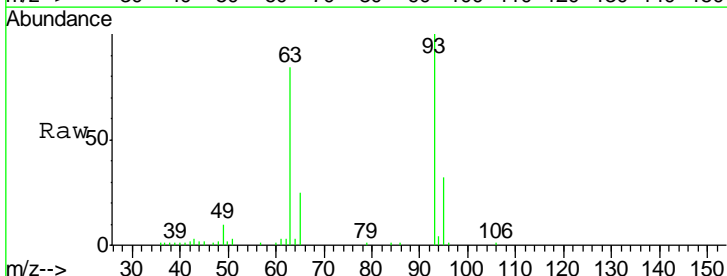
Instrument :
 BNA_G
 ClientSampled :
 SSTD02040

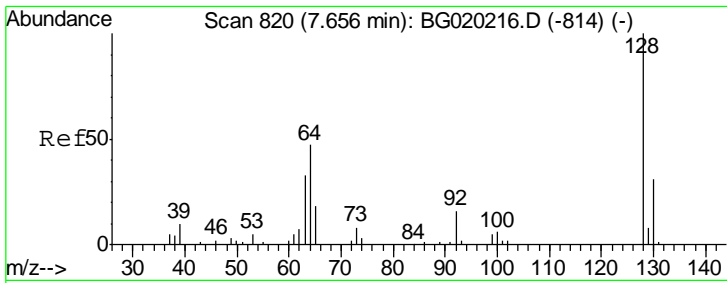
Tgt Ion	Resp	Lower	Upper
94	57283		
65	33.2	26.3	39.5
66	45.9	33.3	49.9



#8
 Bis(2-Chloroethyl)ether
 Concen: 20.47 ng/ul
 RT: 7.51 min Scan# 795
 Delta R.T. -0.00 min
 Lab File: BG020227.D
 Acq: 16 Dec 2015 18:17

Tgt Ion	Resp	Lower	Upper
93	39224		
63	83.7	63.6	95.4
95	32.1	23.7	35.5

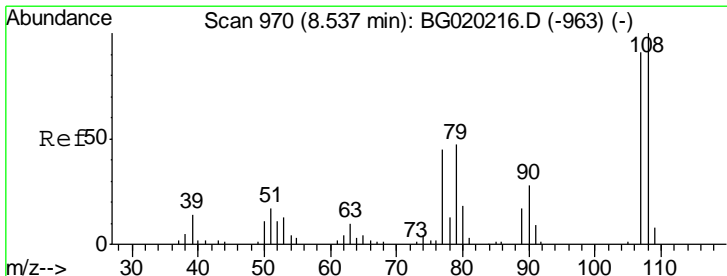
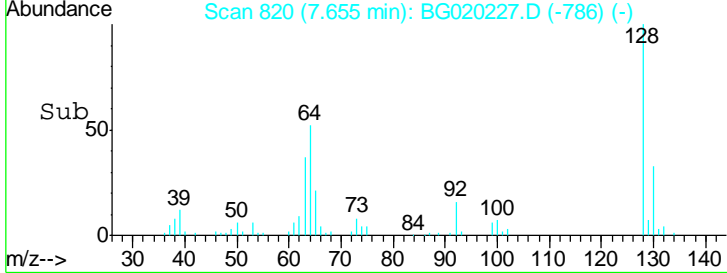
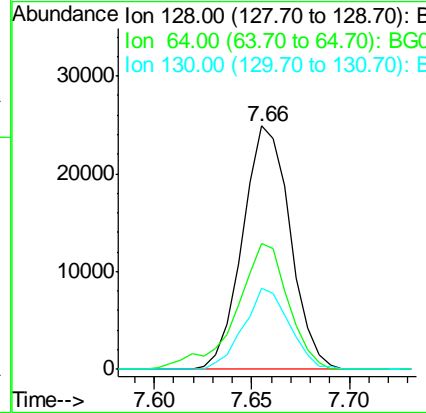
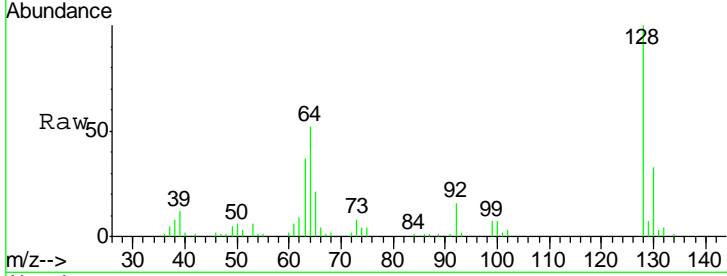




#10
 2-Chlorophenol
 Concen: 21.13 ng/ul
 RT: 7.66 min Scan# 820
 Delta R.T. -0.00 min
 Lab File: BG020227.D
 Acq: 16 Dec 2015 18:17

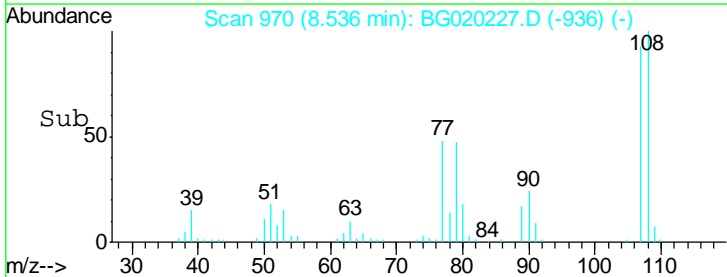
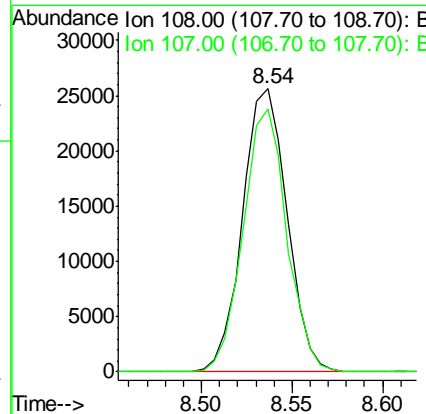
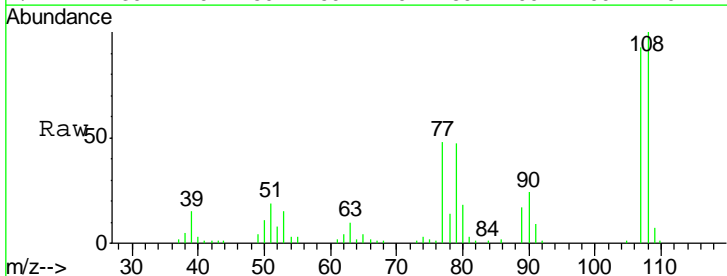
Instrument :
 BNA_G
ClientSampled :
 SSTD02040

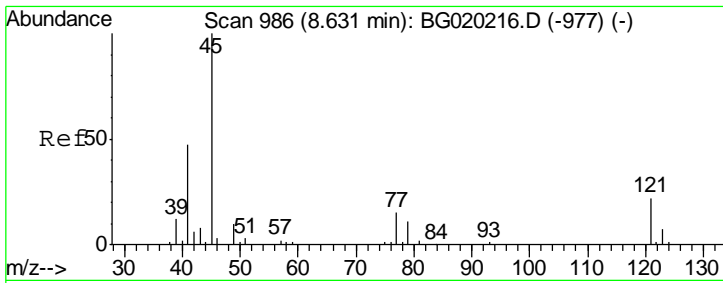
Tgt Ion	Resp	Lower	Upper
128	41993		
64	51.7	39.4	59.0
130	33.3	24.6	36.8



#11
 2-Methylphenol
 Concen: 20.53 ng/ul
 RT: 8.54 min Scan# 970
 Delta R.T. -0.00 min
 Lab File: BG020227.D
 Acq: 16 Dec 2015 18:17

Tgt Ion	Resp	Lower	Upper
108	43748		
107	93.0	67.5	101.3

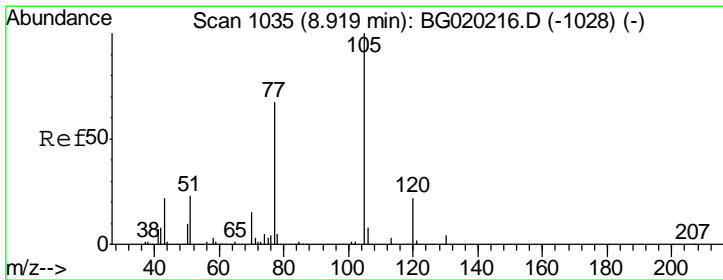
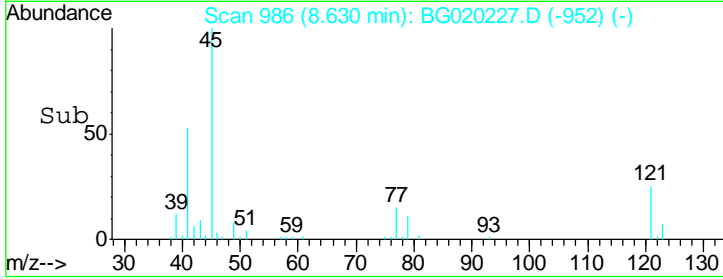
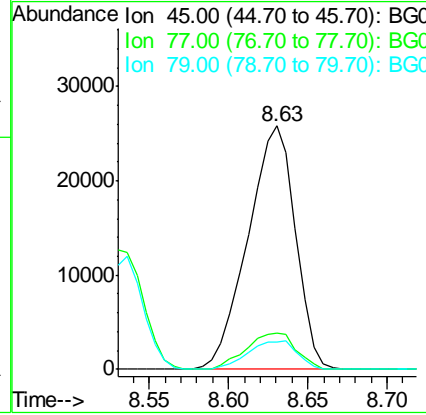
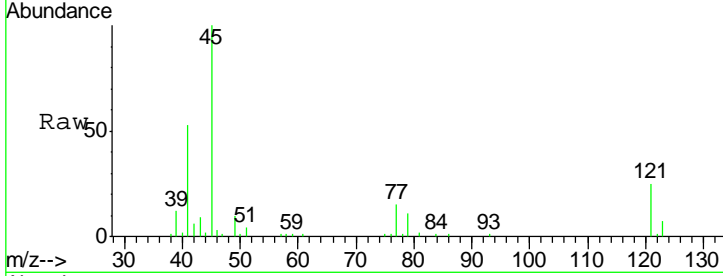




#12
 2,2'-oxybis(1-Chloropropane)
 Concen: 19.44 ng/ul
 RT: 8.63 min Scan# 986
 Delta R.T. -0.00 min
 Lab File: BG020227.D
 Acq: 16 Dec 2015 18:17

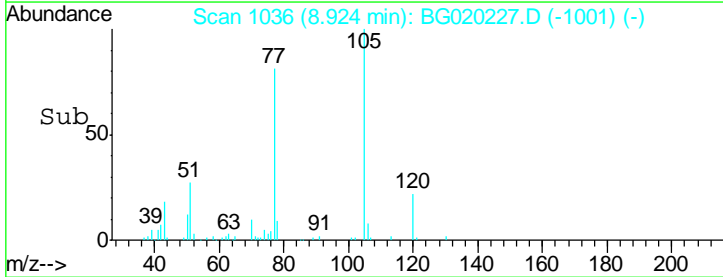
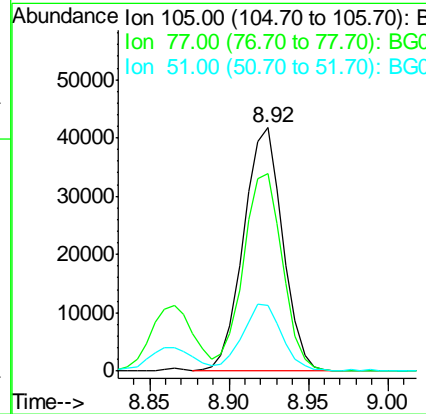
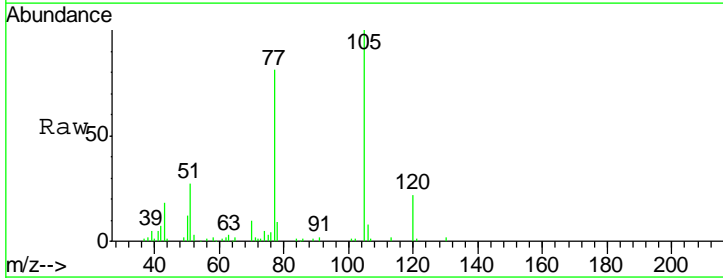
Instrument :
 BNA_G
 ClientSampleId :
 SST02040

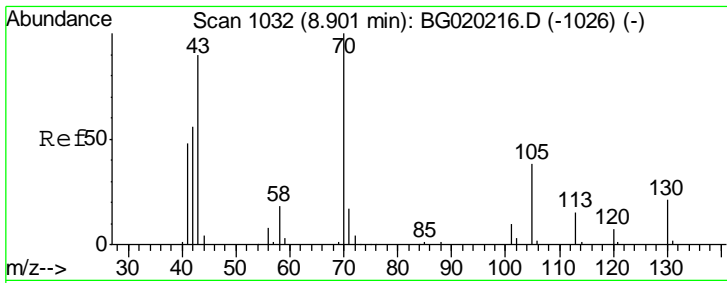
Tgt Ion	Resp	Lower	Upper
45	53655		
77	15.0	12.1	18.1
79	11.2	9.0	13.4



#14
 Acetophenone
 Concen: 20.51 ng/ul
 RT: 8.92 min Scan# 1036
 Delta R.T. 0.01 min
 Lab File: BG020227.D
 Acq: 16 Dec 2015 18:17

Tgt Ion	Resp	Lower	Upper
105	71638		
77	81.1	65.2	97.8
51	27.2	22.6	33.8

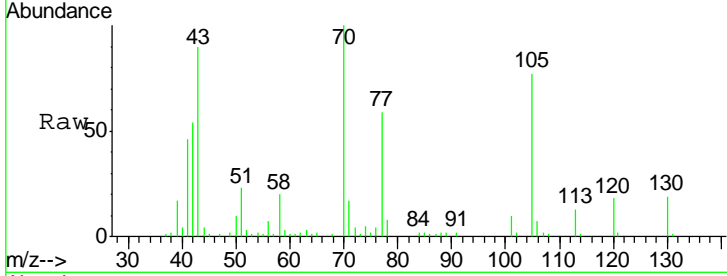




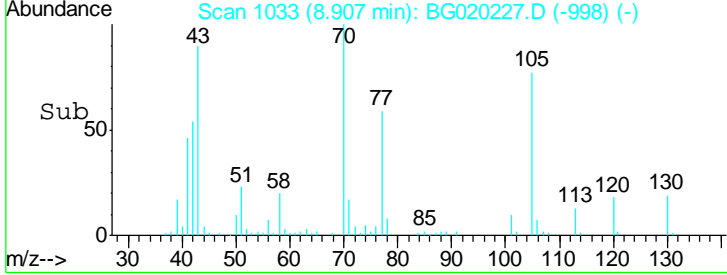
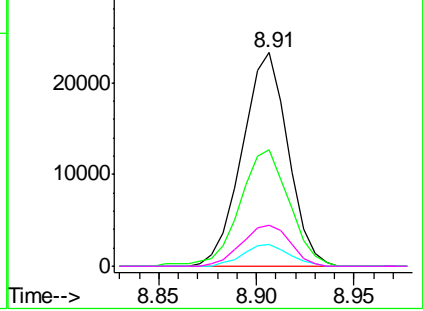
#15
 N-Nitroso-di-n-propylamine
 Concen: 20.46 ng/ul
 RT: 8.91 min Scan# 1033
 Delta R.T. 0.01 min
 Lab File: BG020227.D
 Acq: 16 Dec 2015 18:17

Instrument :
 BNA_G
 ClientSampleId :
 SSTD02040

Tgt Ion	Resp	Lower	Upper
70	100		
42	54.5	44.3	66.5
101	10.2	7.6	11.4
130	19.3	17.0	25.4

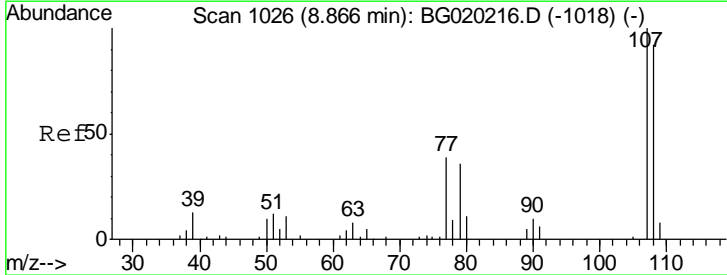


Abundance Ion 70.00 (69.70 to 70.70): BGC
 Ion 42.00 (41.70 to 42.70): BGC
 Ion 101.00 (100.70 to 101.70): BGC
 Ion 130.00 (129.70 to 130.70): BGC

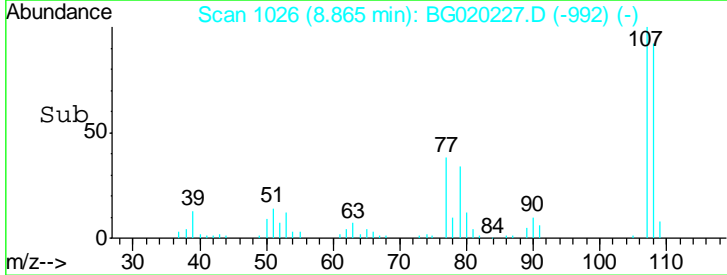
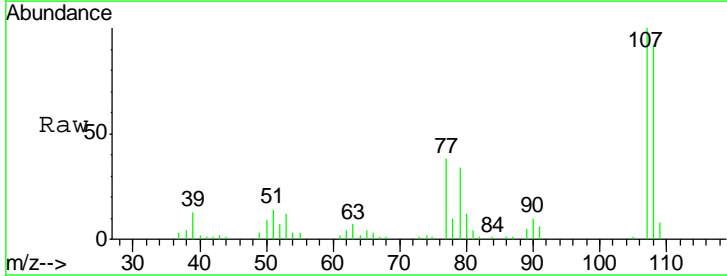
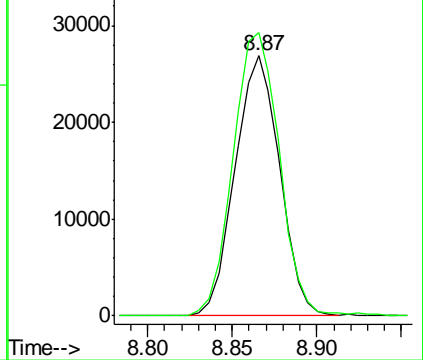


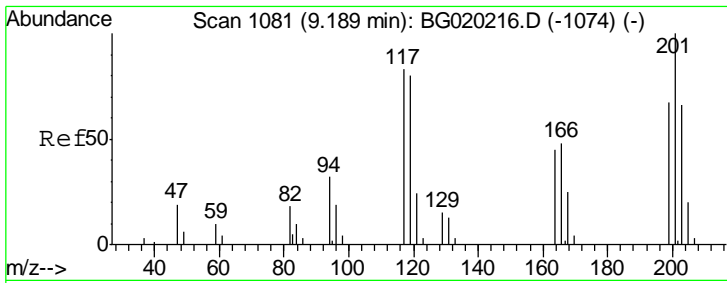
#16
 4-Methylphenol
 Concen: 20.92 ng/ul
 RT: 8.87 min Scan# 1026
 Delta R.T. -0.00 min
 Lab File: BG020227.D
 Acq: 16 Dec 2015 18:17

Tgt Ion	Resp	Lower	Upper
108	100		
107	108.8	88.9	133.3



Abundance Ion 108.00 (107.70 to 108.70): BGC
 Ion 107.00 (106.70 to 107.70): BGC

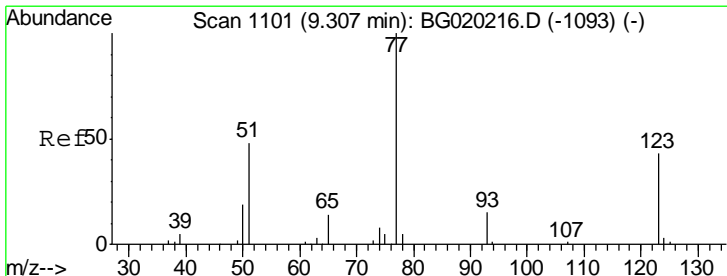
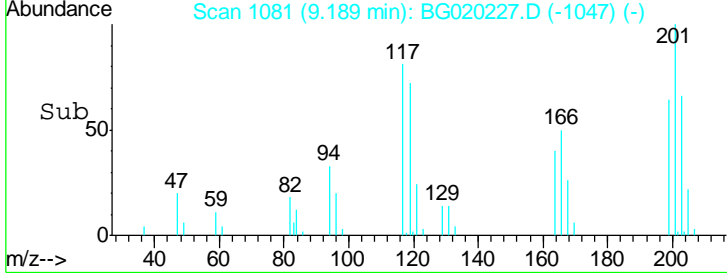
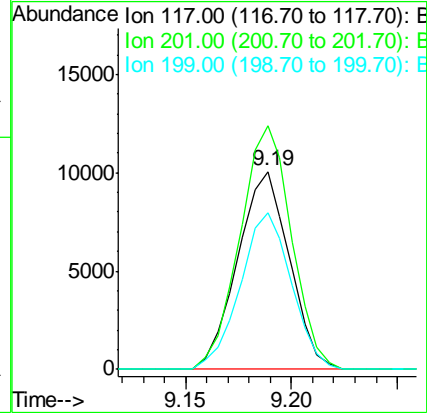
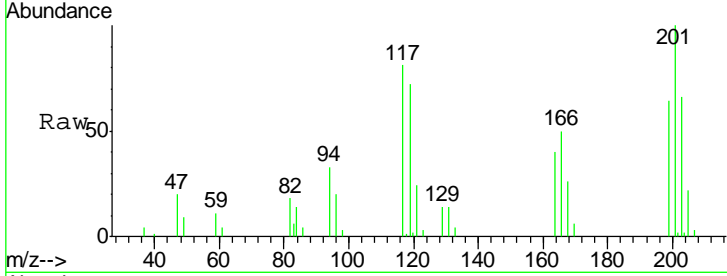




#17
 Hexachloroethane
 Concen: 20.48 ng/ul
 RT: 9.19 min Scan# 1081
 Delta R.T. -0.00 min
 Lab File: BG020227.D
 Acq: 16 Dec 2015 18:17

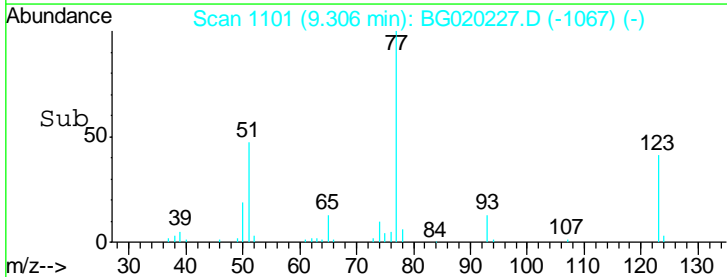
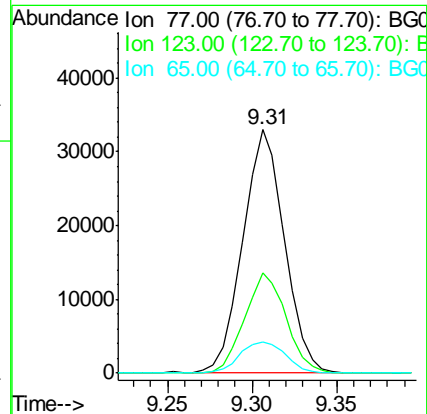
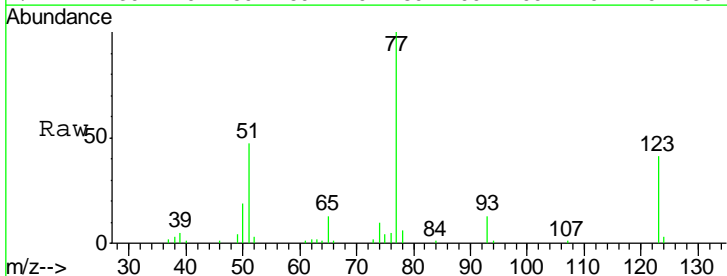
Instrument :
 BNA_G
 ClientSampleID :
 SSTD02040

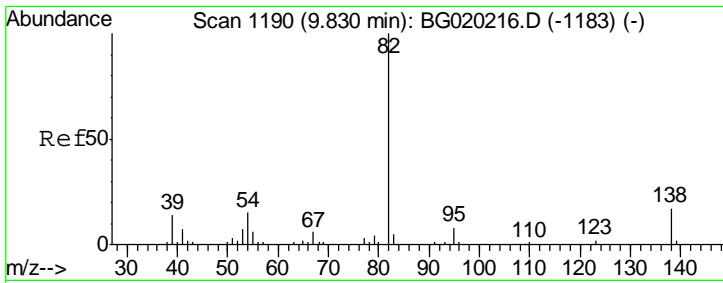
Tgt Ion	Resp	Lower	Upper
117	17099		
201	125.3	102.7	154.1
199	78.9	65.8	98.8



#20
 Nitrobenzene
 Concen: 20.46 ng/ul
 RT: 9.31 min Scan# 1101
 Delta R.T. -0.00 min
 Lab File: BG020227.D
 Acq: 16 Dec 2015 18:17

Tgt Ion	Resp	Lower	Upper
77	56322		
123	41.0	33.4	50.0
65	12.9	11.7	17.5

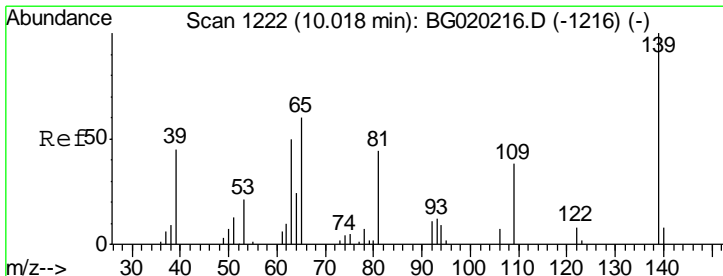
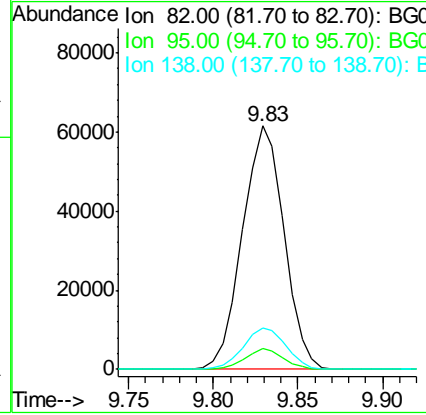
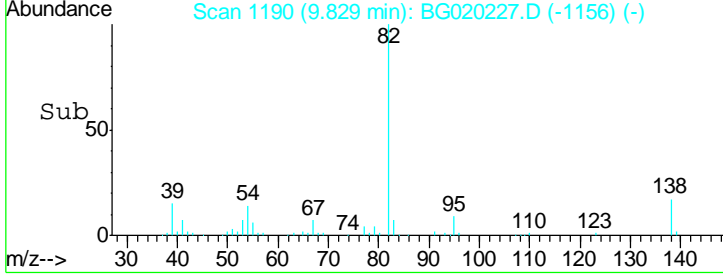
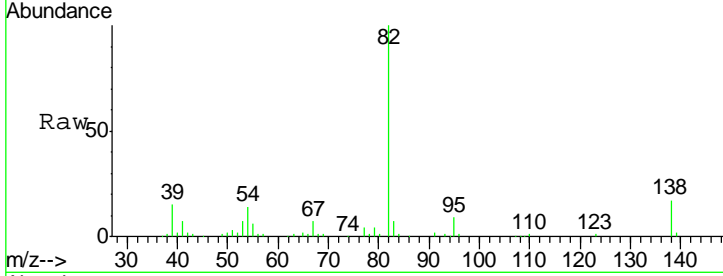




#21
 Isophorone
 Concen: 20.03 ng/ul
 RT: 9.83 min Scan# 1190
 Delta R.T. -0.00 min
 Lab File: BG020227.D
 Acq: 16 Dec 2015 18:17

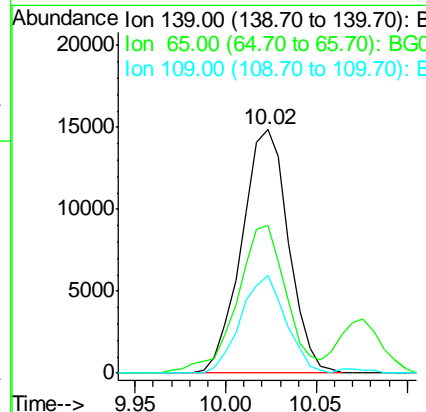
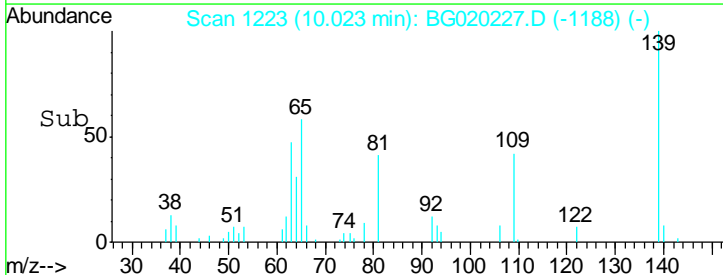
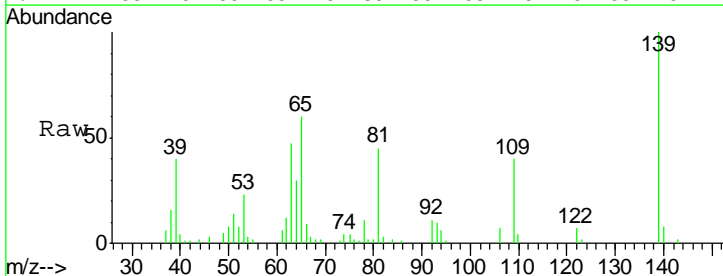
Instrument :
 BNA_G
ClientSampleId :
 SSTD02040

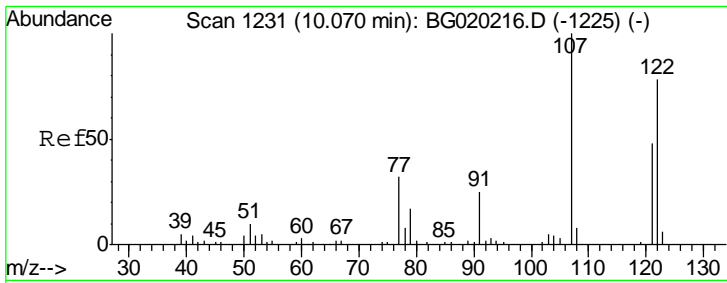
Tgt Ion	Resp	Lower	Upper
82	105252		
95	8.5	6.2	9.2
138	16.9	13.4	20.2



#23
 2-Nitrophenol
 Concen: 21.53 ng/ul
 RT: 10.02 min Scan# 1223
 Delta R.T. 0.01 min
 Lab File: BG020227.D
 Acq: 16 Dec 2015 18:17

Tgt Ion	Resp	Lower	Upper
139	26687		
65	60.4	45.1	67.7
109	40.0	29.6	44.4

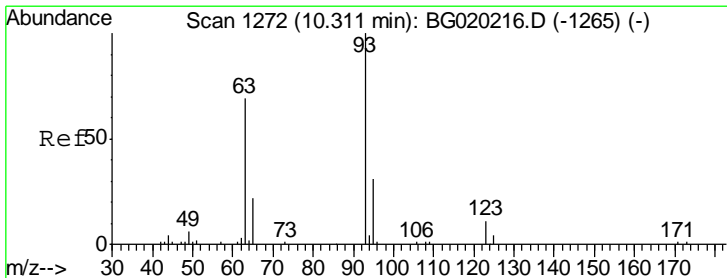
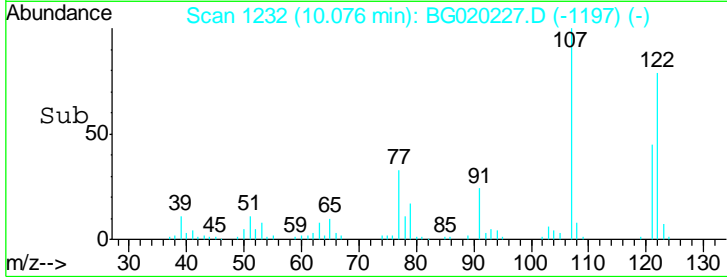
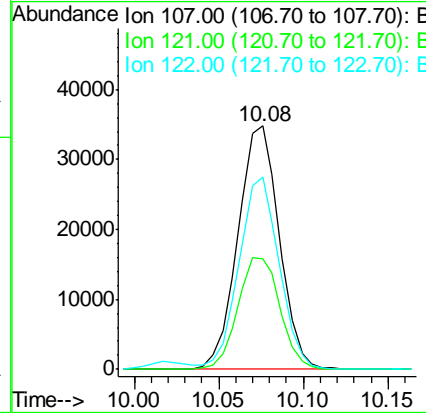
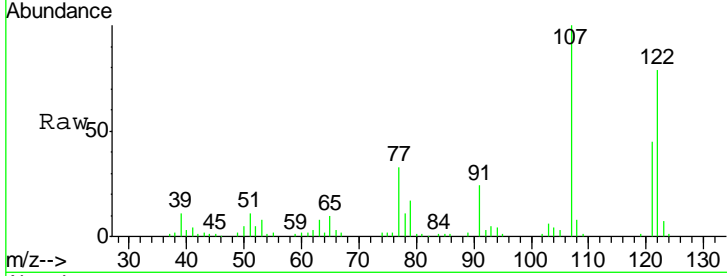




#24
 2,4-Dimethylphenol
 Concen: 21.02 ng/ul
 RT: 10.08 min Scan# 1232
 Delta R.T. 0.01 min
 Lab File: BG020227.D
 Acq: 16 Dec 2015 18:17

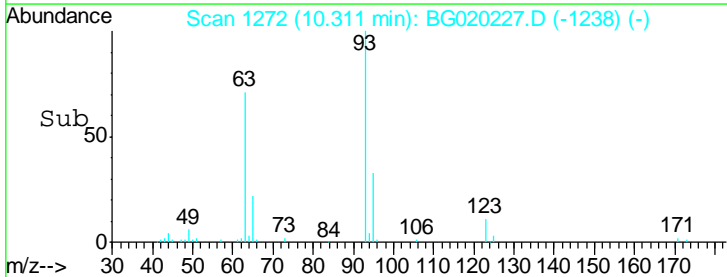
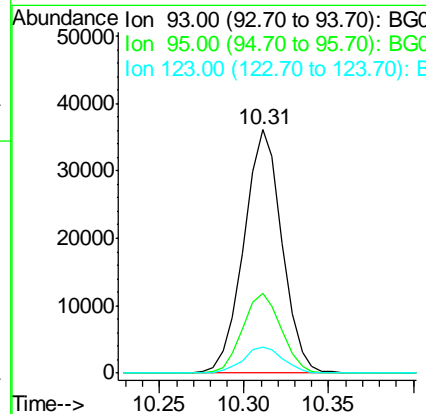
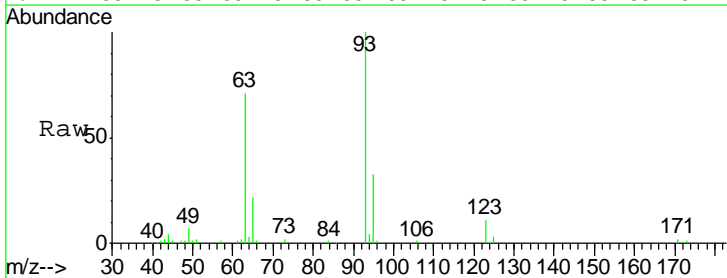
Instrument :
 BNA_G
 ClientSampled :
 SSTD02040

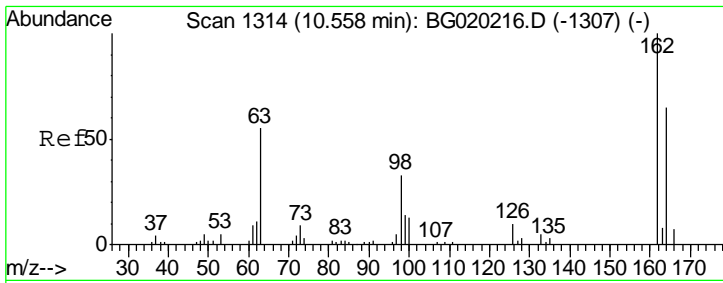
Tgt Ion	Resp	Lower	Upper
107	59179		
121	45.2	39.0	58.4
122	79.3	62.1	93.1



#25
 Bis(2-Chloroethoxy)methane
 Concen: 19.93 ng/ul
 RT: 10.31 min Scan# 1272
 Delta R.T. -0.00 min
 Lab File: BG020227.D
 Acq: 16 Dec 2015 18:17

Tgt Ion	Resp	Lower	Upper
93	56733		
95	32.9	27.4	41.2
123	10.8	9.4	14.0

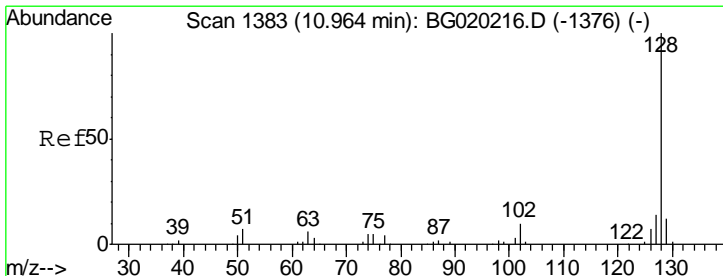
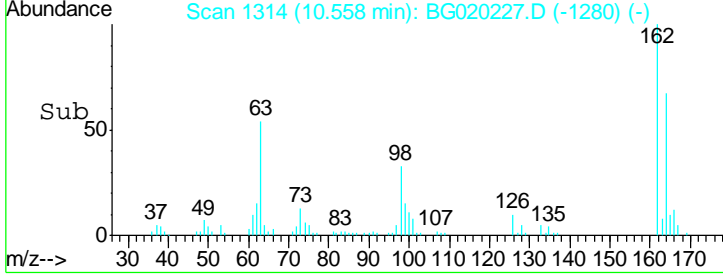
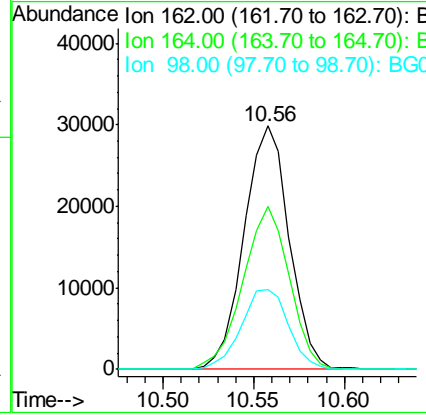
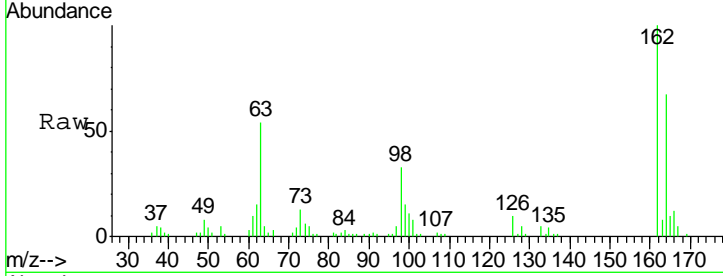




#27
 2,4-Dichlorophenol
 Concen: 21.45 ng/ul
 RT: 10.56 min Scan# 1314
 Delta R.T. -0.00 min
 Lab File: BG020227.D
 Acq: 16 Dec 2015 18:17

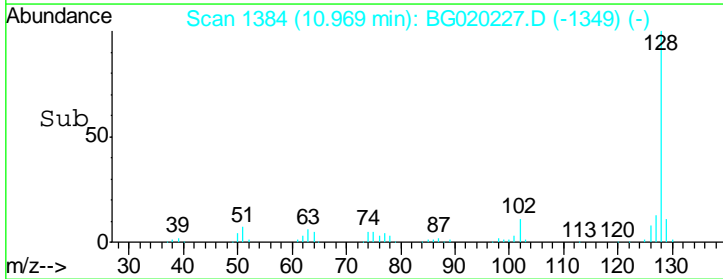
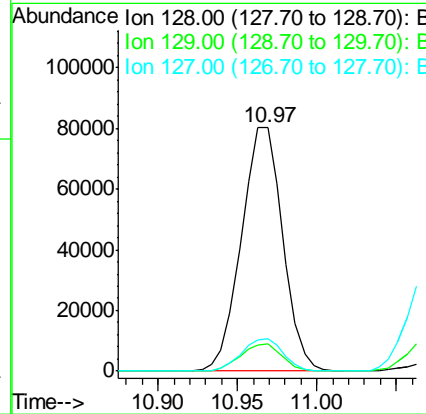
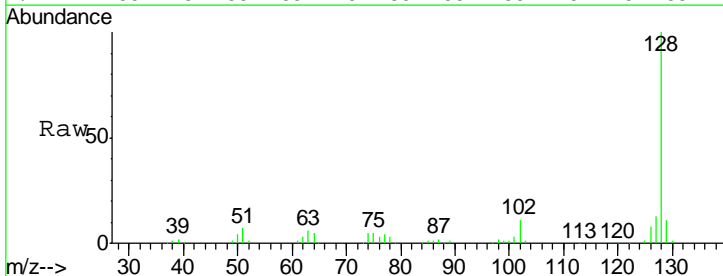
Instrument :
 BNA_G
 ClientSampleID :
 SSTD02040

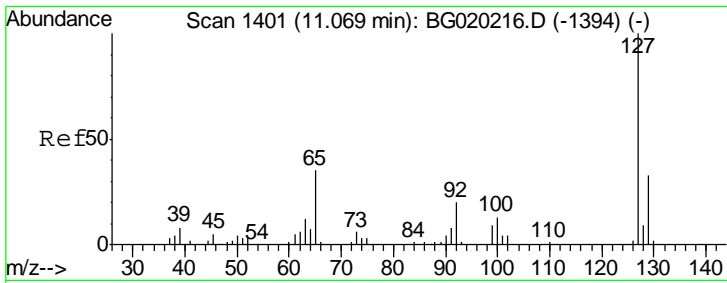
Tgt Ion	Resp	Lower	Upper
162	51596		
164	100	48.2	72.2
98	33.0	27.2	40.8



#28
 Naphthalene
 Concen: 20.91 ng/ul
 RT: 10.97 min Scan# 1384
 Delta R.T. 0.01 min
 Lab File: BG020227.D
 Acq: 16 Dec 2015 18:17

Tgt Ion	Resp	Lower	Upper
128	145558		
129	100	8.6	12.8
127	13.3	10.1	15.1

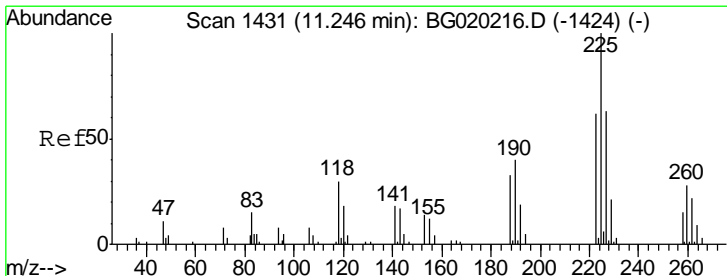
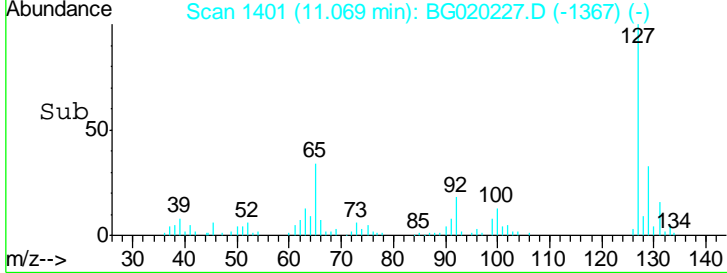
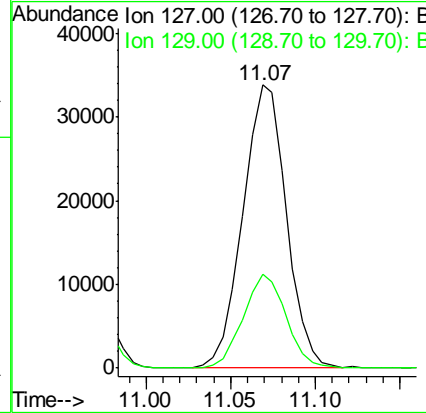
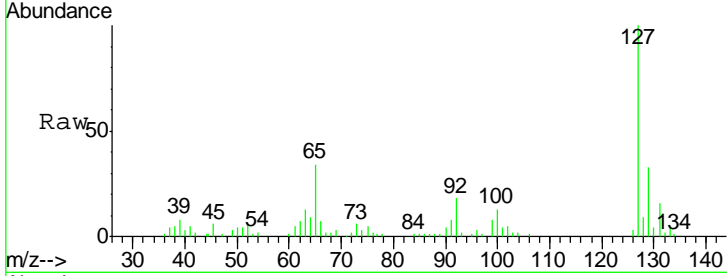




#30
 4-Chloroaniline
 Concen: 22.51 ng/ul
 RT: 11.07 min Scan# 1401
 Delta R.T. -0.00 min
 Lab File: BG020227.D
 Acq: 16 Dec 2015 18:17

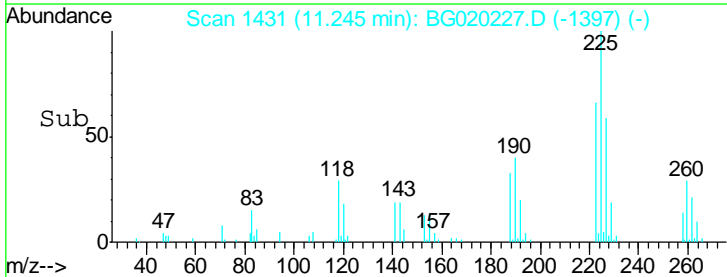
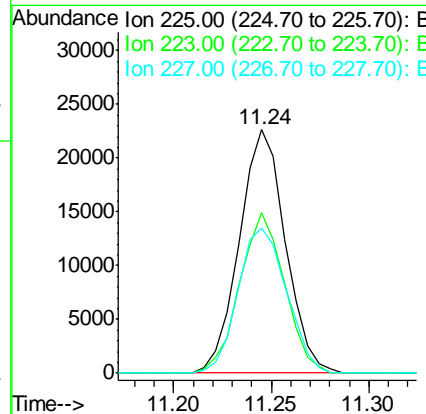
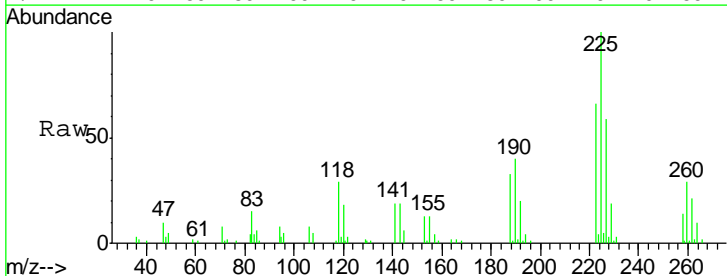
Instrument :
 BNA_G
 ClientSampled :
 SST02040

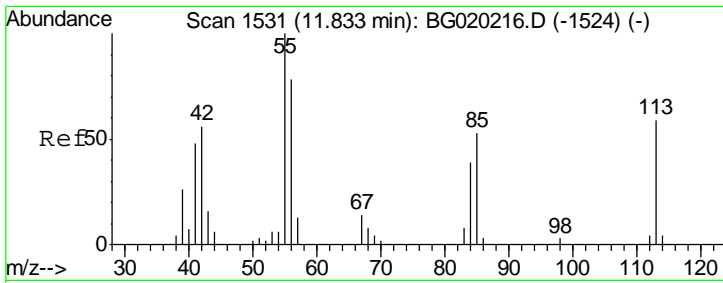
Tgt Ion	Resp	Lower	Upper
127	60450		
129	33.0	25.7	38.5



#31
 Hexachlorobutadiene
 Concen: 20.61 ng/ul
 RT: 11.24 min Scan# 1431
 Delta R.T. -0.00 min
 Lab File: BG020227.D
 Acq: 16 Dec 2015 18:17

Tgt Ion	Resp	Lower	Upper
225	36958		
223	62.8	47.0	70.6
227	59.2	49.7	74.5



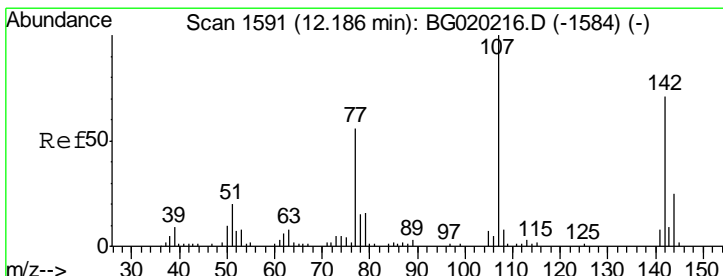
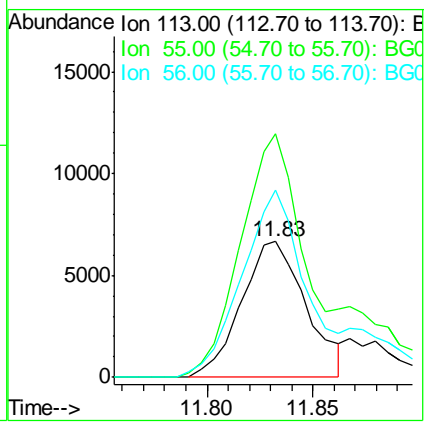
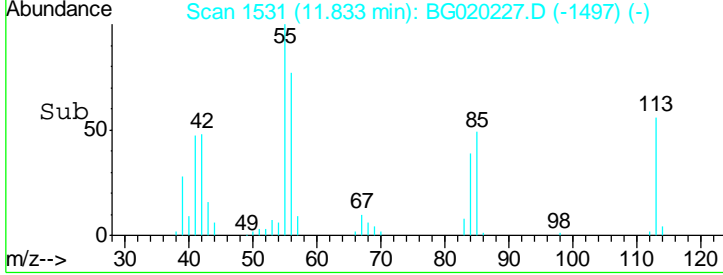
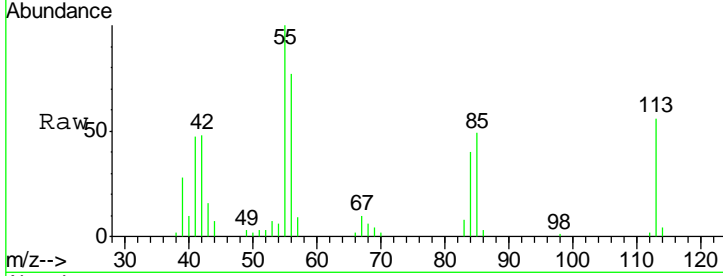


#32
 Caprolactam
 Concen: 16.71 ng/ul
 RT: 11.83 min Scan# 1531
 Delta R.T. -0.00 min
 Lab File: BG020227.D
 Acq: 16 Dec 2015 18:17

Instrument :
 BNA_G
 ClientSampled :
 SSTD02040

Tgt Ion: 113 Resp: 14186

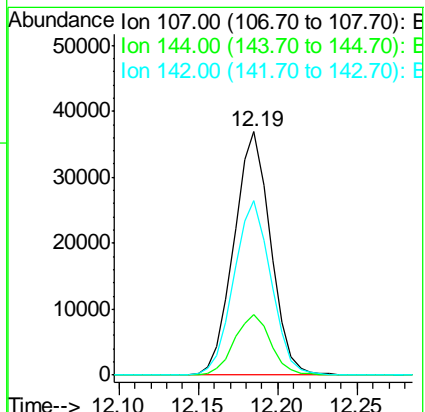
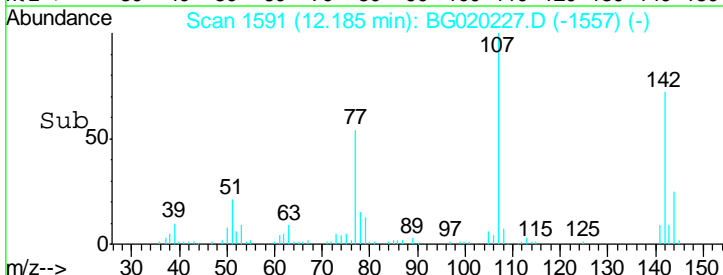
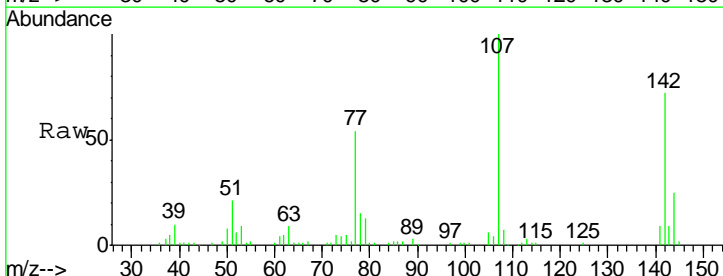
Ion	Ratio	Lower	Upper
113	100		
55	179.4	132.1	198.1
56	137.9	103.3	154.9

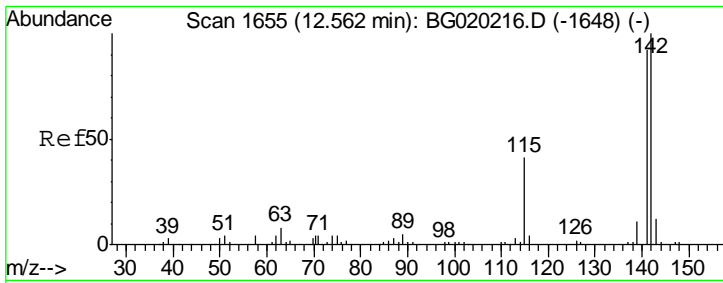


#33
 4-Chloro-3-methylphenol
 Concen: 20.71 ng/ul
 RT: 12.19 min Scan# 1591
 Delta R.T. -0.00 min
 Lab File: BG020227.D
 Acq: 16 Dec 2015 18:17

Tgt Ion: 107 Resp: 59206

Ion	Ratio	Lower	Upper
107	100		
144	24.7	18.7	28.1
142	71.8	52.8	79.2

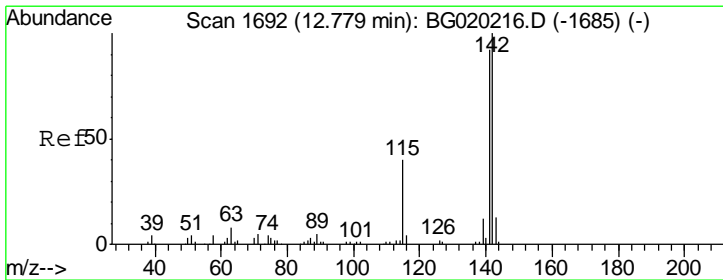
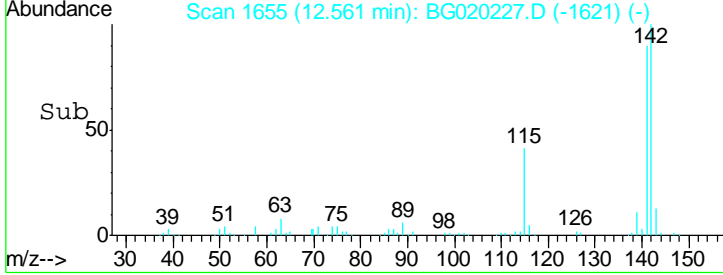
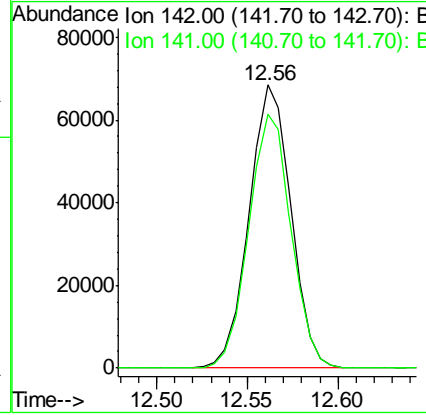
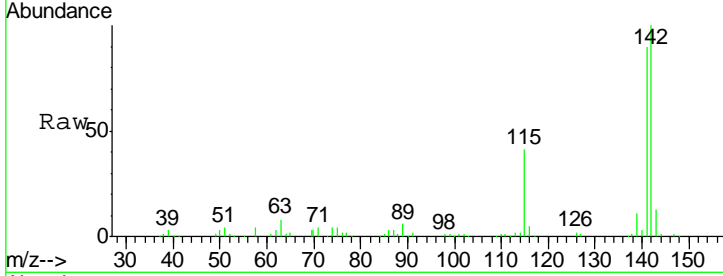




#34
 2-Methylnaphthalene
 Concen: 20.61 ng/ul
 RT: 12.56 min Scan# 1655
 Delta R.T. -0.00 min
 Lab File: BG020227.D
 Acq: 16 Dec 2015 18:17

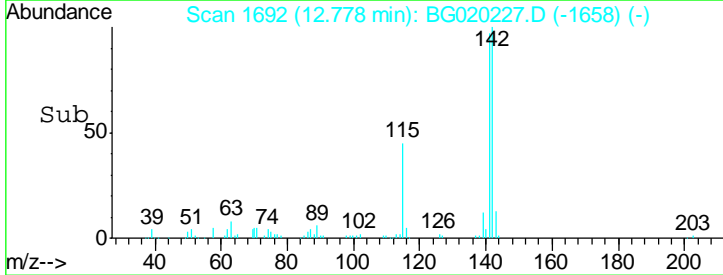
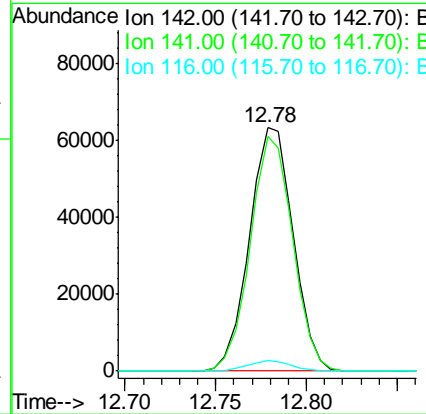
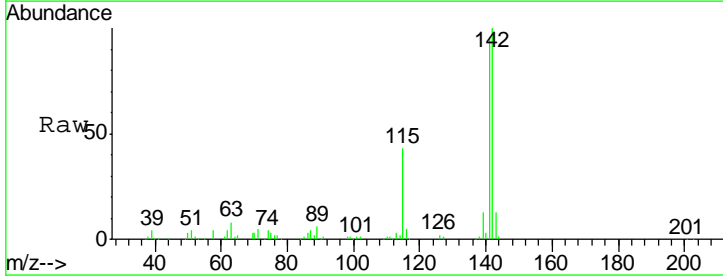
Instrument :
 BNA_G
 ClientSampled :
 SSTD02040

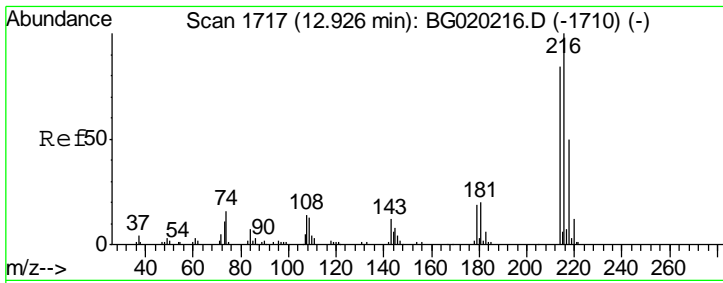
Tgt Ion:142 Resp: 109554
 Ion Ratio Lower Upper
 142 100
 141 89.7 74.9 112.3



#35
 1-Methylnaphthalene
 Concen: 20.78 ng/ul
 RT: 12.78 min Scan# 1692
 Delta R.T. -0.00 min
 Lab File: BG020227.D
 Acq: 16 Dec 2015 18:17

Tgt Ion:142 Resp: 106230
 Ion Ratio Lower Upper
 142 100
 141 96.2 73.0 109.6
 116 4.6 3.0 4.6#



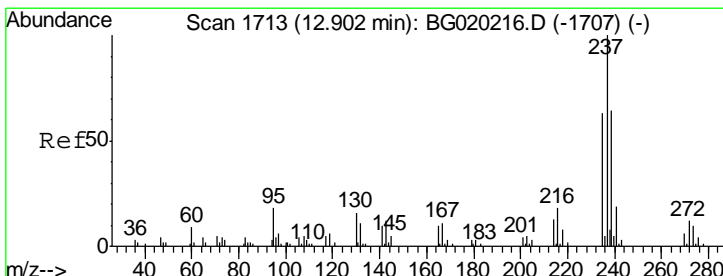
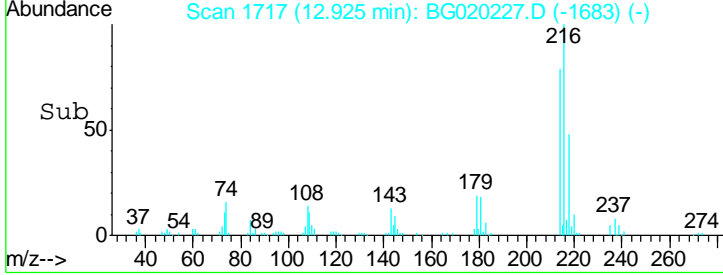
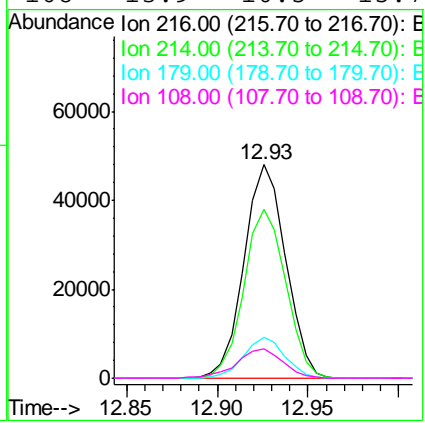
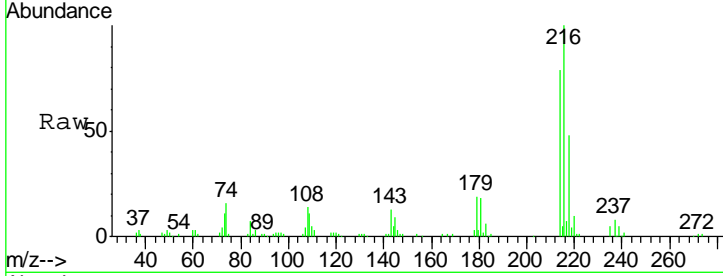


#37
 1,2,4,5-Tetrachlorobenzene
 Concen: 20.65 ng/ul
 RT: 12.93 min Scan# 1717
 Delta R.T. -0.00 min
 Lab File: BG020227.D
 Acq: 16 Dec 2015 18:17

Instrument :
 BNA_G
 ClientSampled :
 SSTD02040

Tgt Ion: 216 Resp: 76918

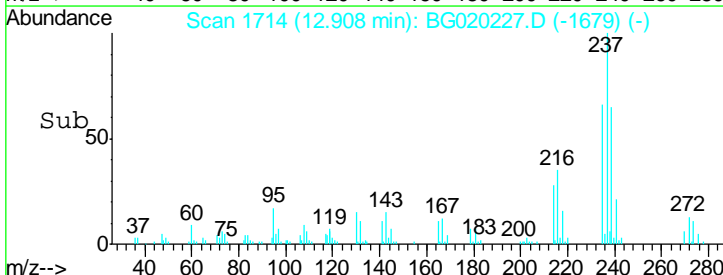
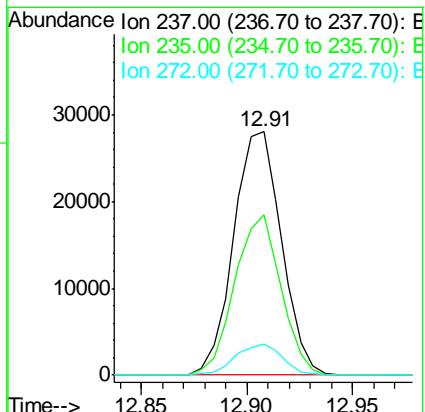
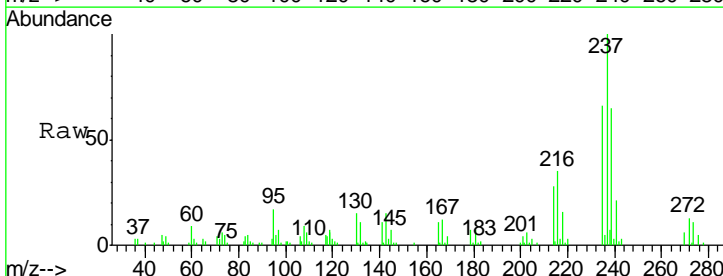
Ion	Ratio	Lower	Upper
216	100		
214	78.9	62.6	93.8
179	19.2	14.7	22.1
108	13.9	10.5	15.7

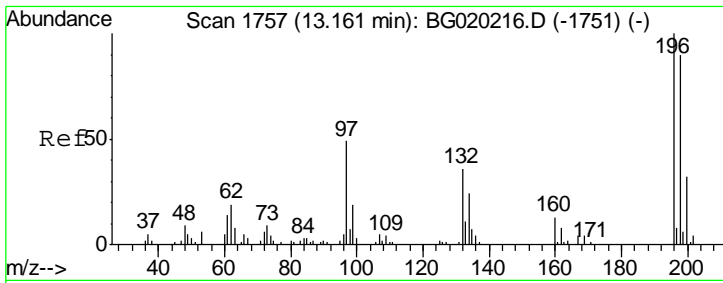


#38
 Hexachlorocyclopentadiene
 Concen: 19.11 ng/ul
 RT: 12.91 min Scan# 1714
 Delta R.T. 0.01 min
 Lab File: BG020227.D
 Acq: 16 Dec 2015 18:17

Tgt Ion: 237 Resp: 43994

Ion	Ratio	Lower	Upper
237	100		
235	66.1	50.2	75.4
272	12.5	10.3	15.5

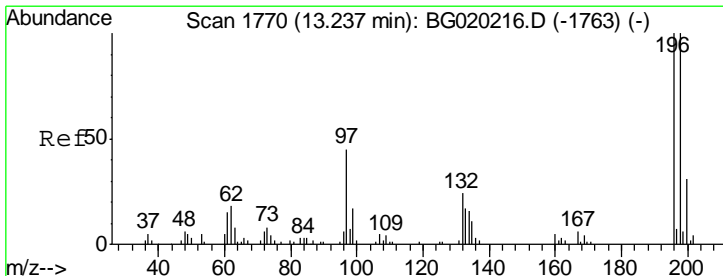
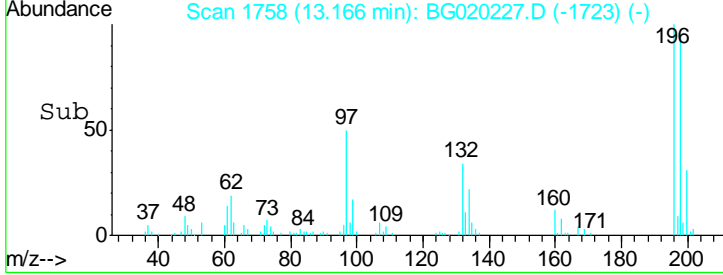
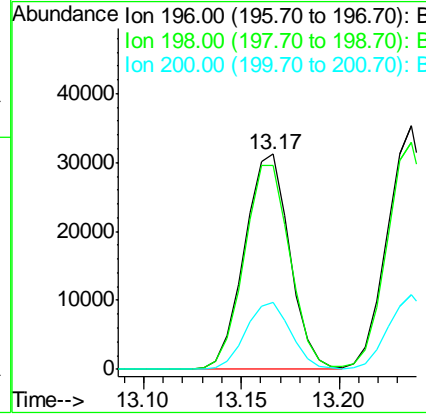
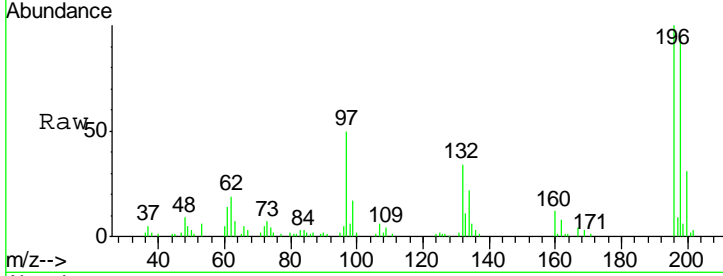




#39
 2,4,6-Trichlorophenol
 Concen: 21.00 ng/ul
 RT: 13.17 min Scan# 1758
 Delta R.T. 0.01 min
 Lab File: BG020227.D
 Acq: 16 Dec 2015 18:17

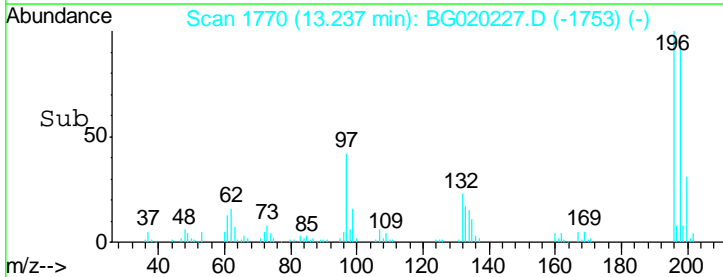
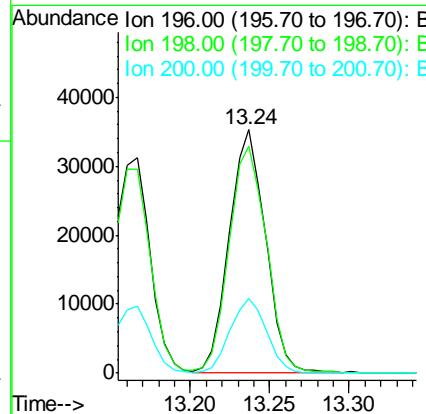
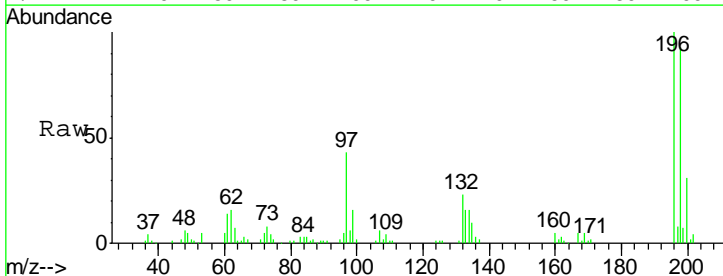
Instrument :
 BNA_G
 ClientSampleID :
 SSTD02040

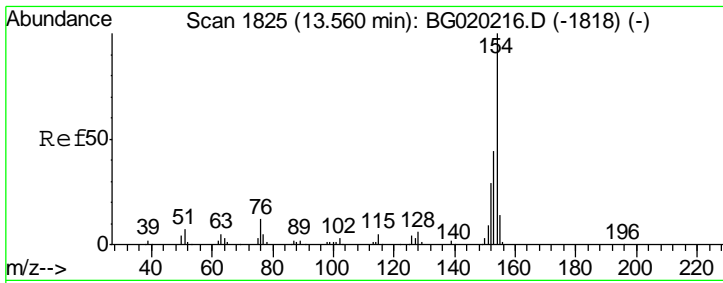
Tgt Ion	Resp	Lower	Upper
196	100		
198	94.7	75.9	113.9
200	31.3	25.8	38.8



#40
 2,4,5-Trichlorophenol
 Concen: 21.08 ng/ul
 RT: 13.24 min Scan# 1770
 Delta R.T. -0.00 min
 Lab File: BG020227.D
 Acq: 16 Dec 2015 18:17

Tgt Ion	Resp	Lower	Upper
196	100		
198	93.4	74.4	111.6
200	30.7	23.8	35.8

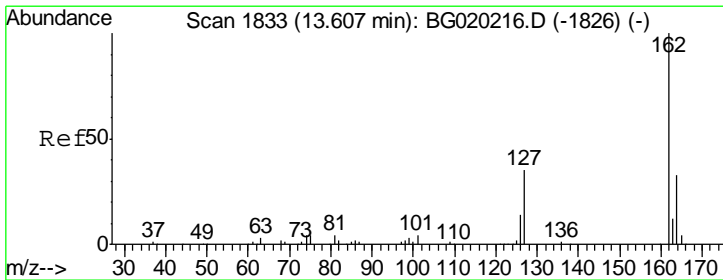
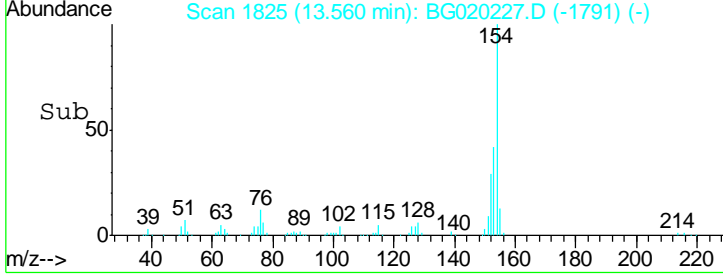
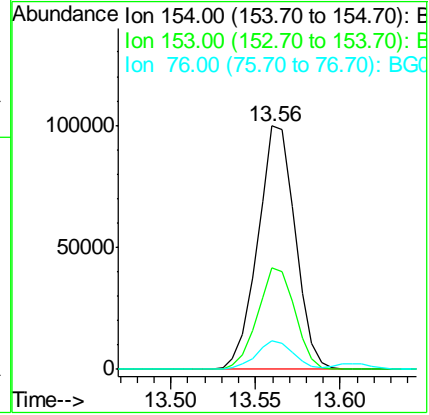
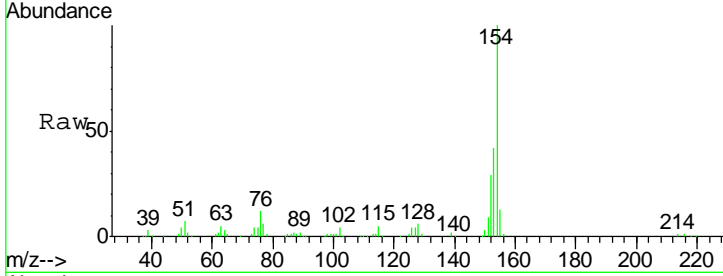




#41
 1,1'-Biphenyl
 Concen: 20.58 ng/ul
 RT: 13.56 min Scan# 1825
 Delta R.T. -0.00 min
 Lab File: BG020227.D
 Acq: 16 Dec 2015 18:17

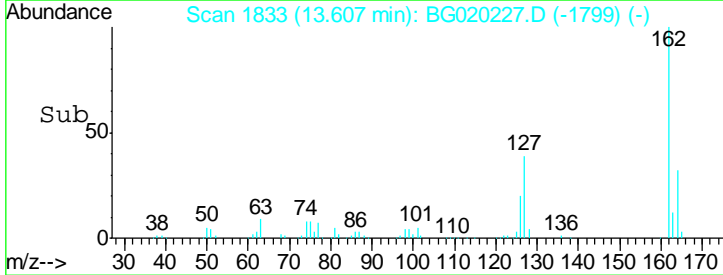
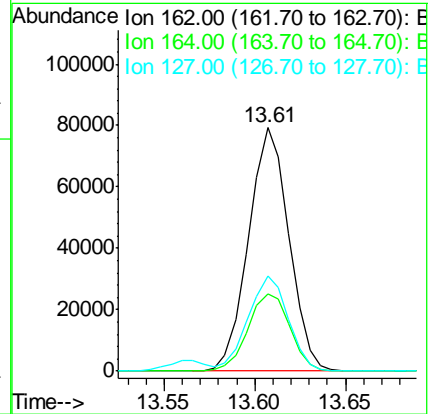
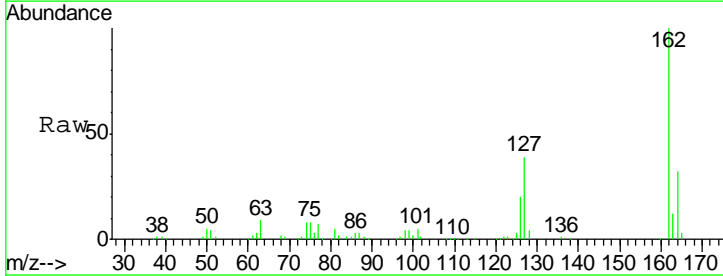
Instrument :
 BNA_G
 ClientSampled :
 SST02040

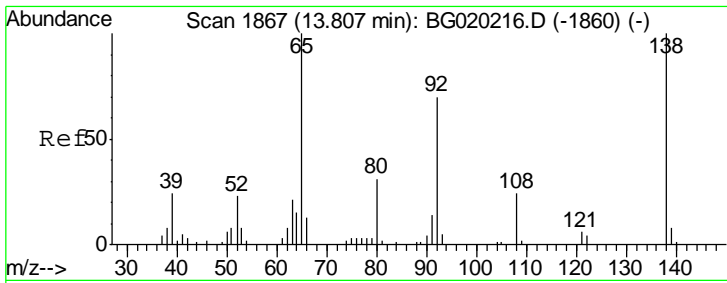
Tgt Ion	Resp	Lower	Upper
154	154136		
153	41.7	35.5	53.3
76	11.6	10.4	15.6



#42
 2-Chloronaphthalene
 Concen: 20.43 ng/ul
 RT: 13.61 min Scan# 1833
 Delta R.T. -0.00 min
 Lab File: BG020227.D
 Acq: 16 Dec 2015 18:17

Tgt Ion	Resp	Lower	Upper
162	122479		
164	31.6	25.0	37.6
127	39.3	29.9	44.9

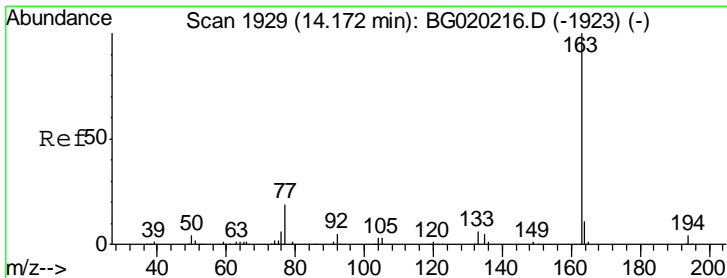
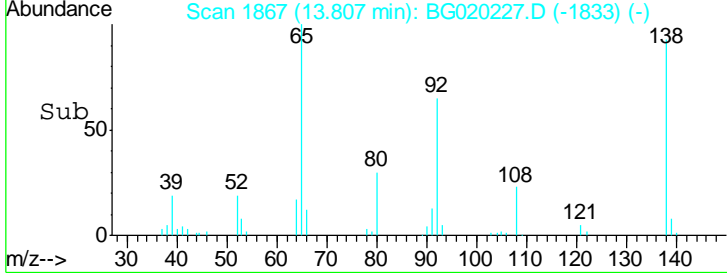
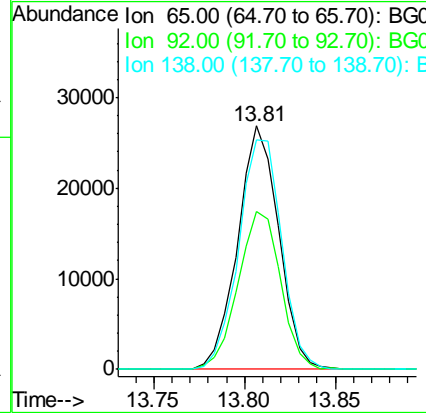
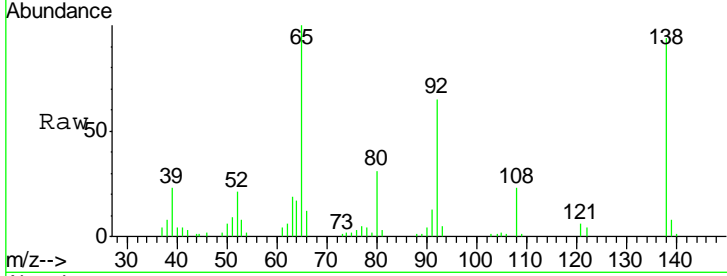




#43
 2-Nitroaniline
 Concen: 20.74 ng/ul
 RT: 13.81 min Scan# 1867
 Delta R.T. -0.00 min
 Lab File: BG020227.D
 Acq: 16 Dec 2015 18:17

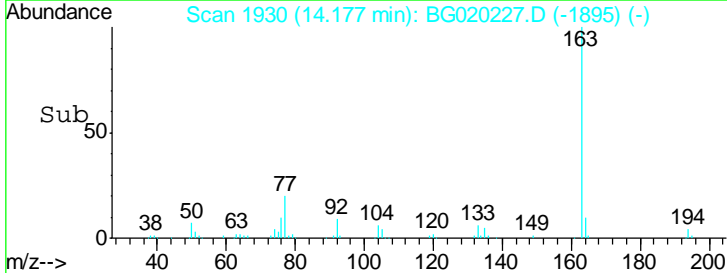
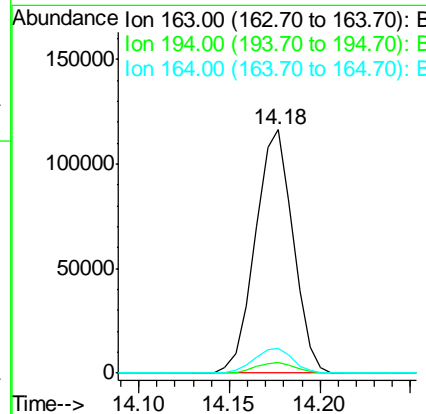
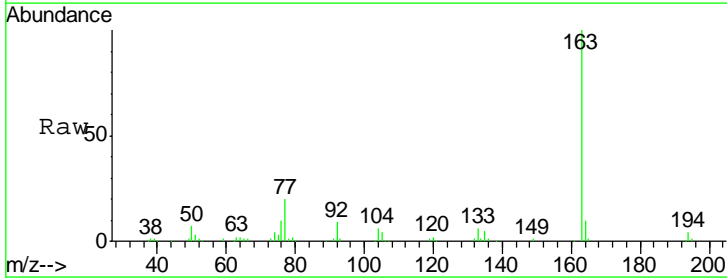
Instrument :
 BNA_G
 ClientSampled :
 SSTD02040

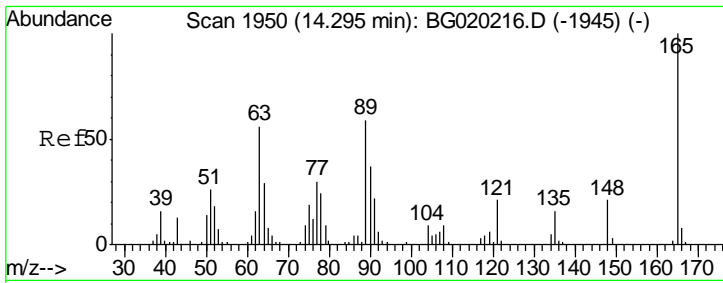
Tgt Ion	Resp	Lower	Upper
65	42276		
92	64.9	53.1	79.7
138	94.0	76.6	114.8



#45
 Dimethylphthalate
 Concen: 20.52 ng/ul
 RT: 14.18 min Scan# 1930
 Delta R.T. 0.01 min
 Lab File: BG020227.D
 Acq: 16 Dec 2015 18:17

Tgt Ion	Resp	Lower	Upper
163	168284		
194	4.4	3.5	5.3
164	10.0	7.7	11.5

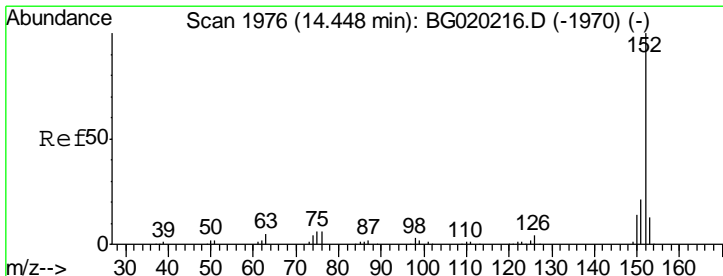
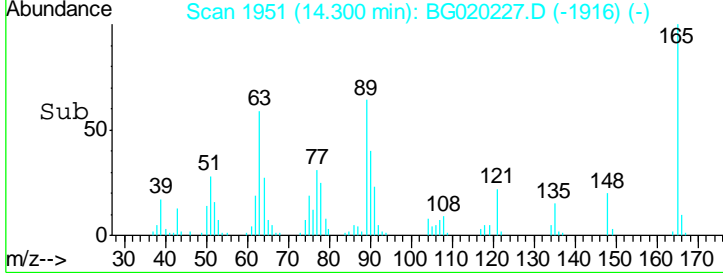
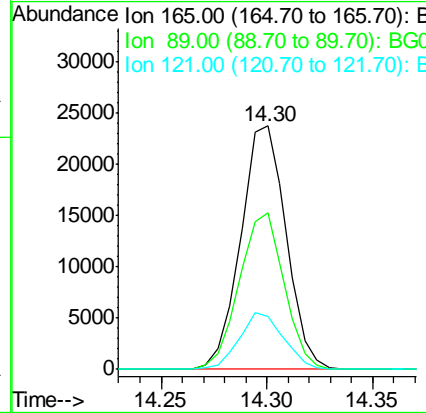
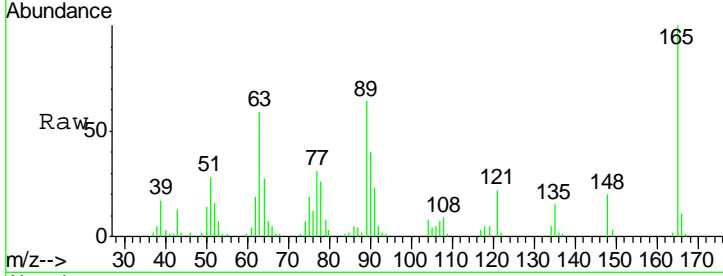




#46
 2,6-Dinitrotoluene
 Concen: 20.81 ng/ul
 RT: 14.30 min Scan# 1951
 Delta R.T. 0.01 min
 Lab File: BG020227.D
 Acq: 16 Dec 2015 18:17

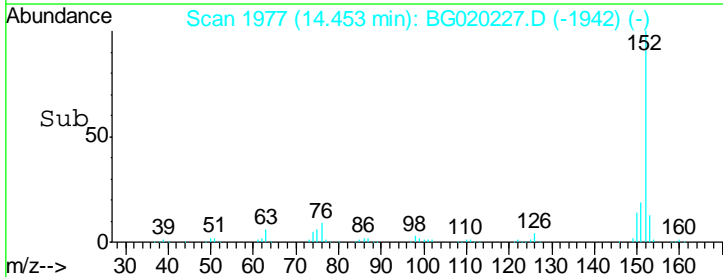
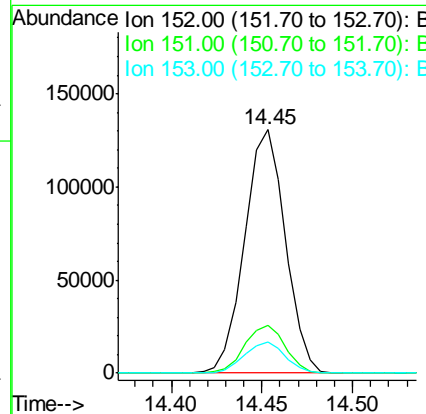
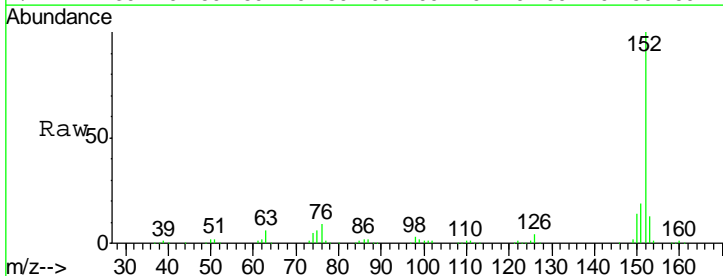
Instrument :
 BNA_G
 ClientSampled :
 SSTD02040

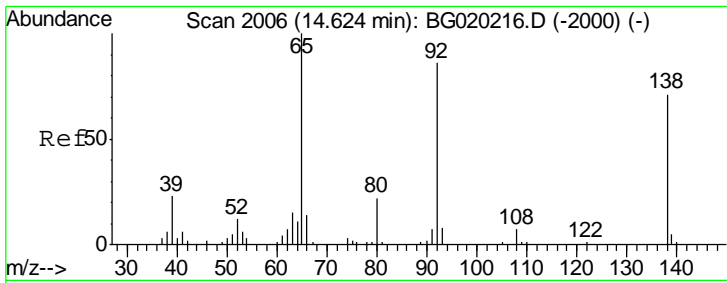
Tgt Ion	Resp	Lower	Upper
165	35304		
89	64.2	47.0	70.4
121	21.8	17.0	25.6



#48
 Acenaphthylene
 Concen: 20.54 ng/ul
 RT: 14.45 min Scan# 1977
 Delta R.T. 0.01 min
 Lab File: BG020227.D
 Acq: 16 Dec 2015 18:17

Tgt Ion	Resp	Lower	Upper
152	203796		
151	19.4	16.4	24.6
153	12.7	10.4	15.6

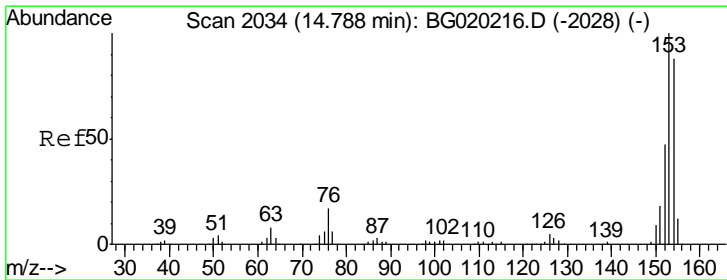
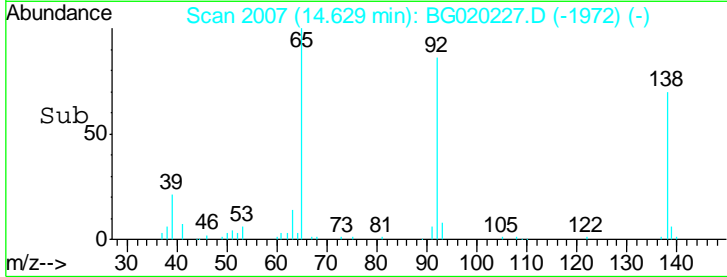
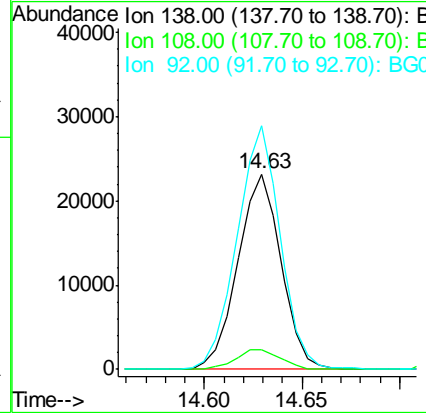
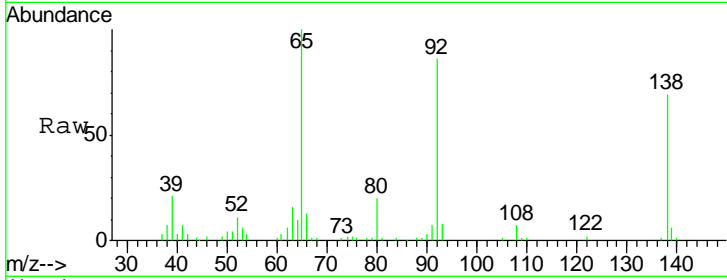




#49
 3-Nitroaniline
 Concen: 21.59 ng/ul
 RT: 14.63 min Scan# 2007
 Delta R.T. 0.01 min
 Lab File: BG020227.D
 Acq: 16 Dec 2015 18:17

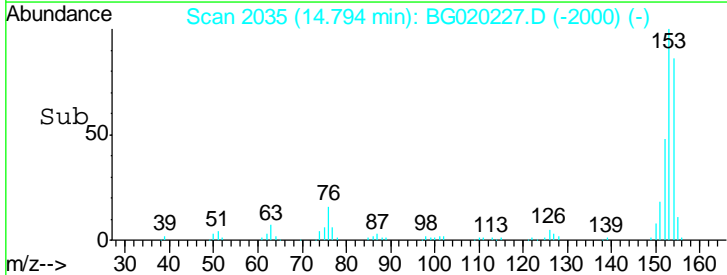
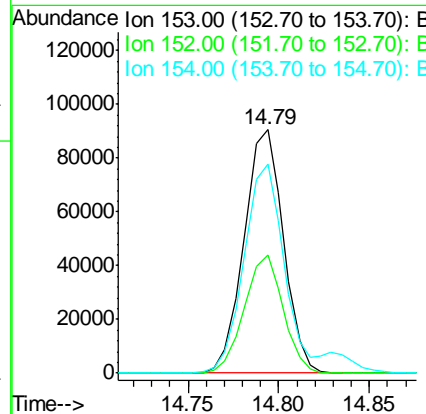
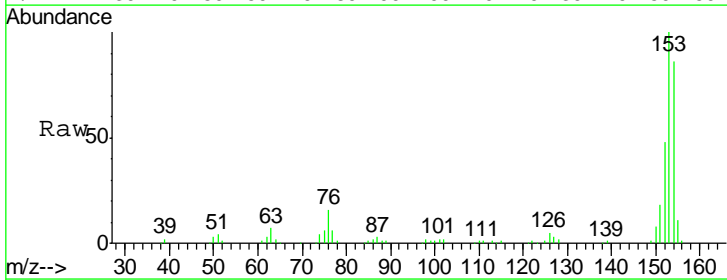
Instrument :
 BNA_G
 ClientSampleID :
 SSTD02040

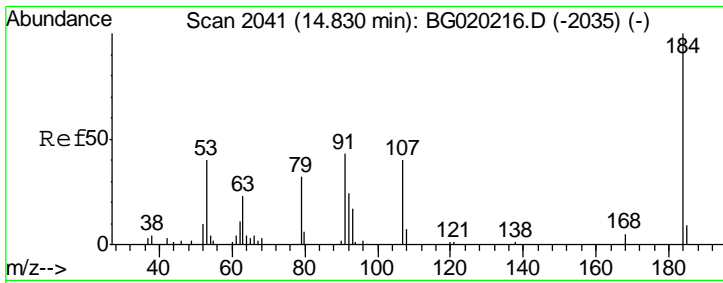
Tgt Ion	Resp	Lower	Upper
138	100		
108	10.0	9.1	13.7
92	124.6	103.2	154.8



#50
 Acenaphthene
 Concen: 20.51 ng/ul
 RT: 14.79 min Scan# 2035
 Delta R.T. 0.01 min
 Lab File: BG020227.D
 Acq: 16 Dec 2015 18:17

Tgt Ion	Resp	Lower	Upper
153	100		
152	48.4	37.6	56.4
154	85.8	67.9	101.9

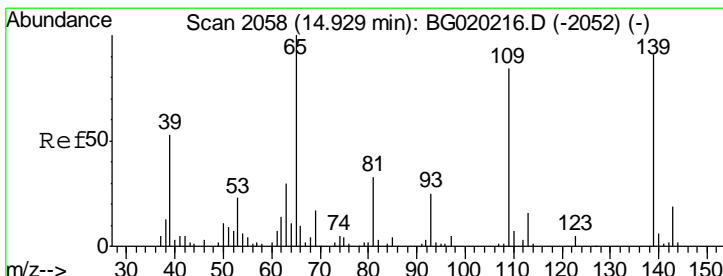
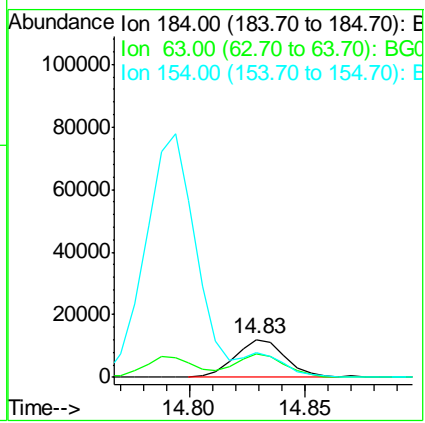
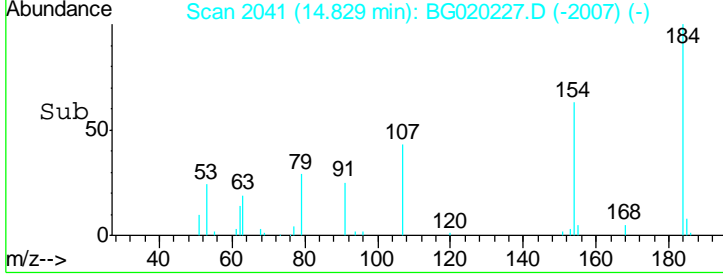
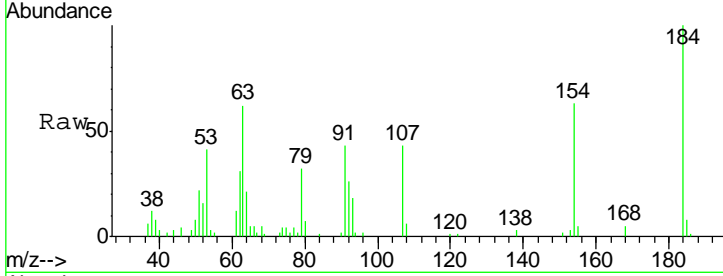




#51
 2,4-Dinitrophenol
 Concen: 19.04 ng/ul
 RT: 14.83 min Scan# 2041
 Delta R.T. -0.00 min
 Lab File: BG020227.D
 Acq: 16 Dec 2015 18:17

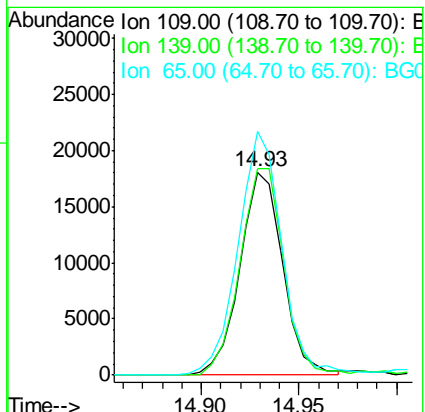
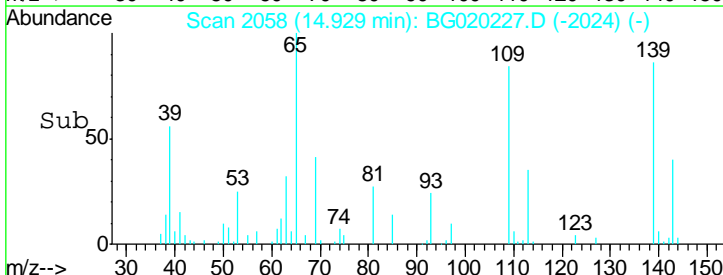
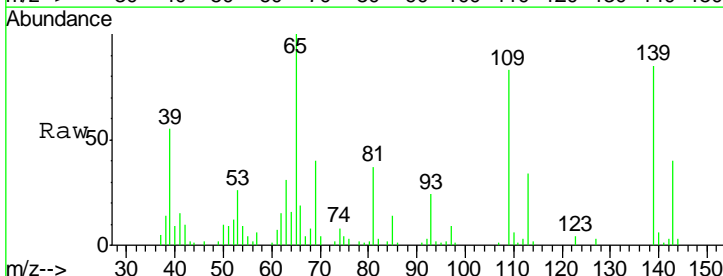
Instrument :
 BNA_G
 ClientSampled :
 SSTD02040

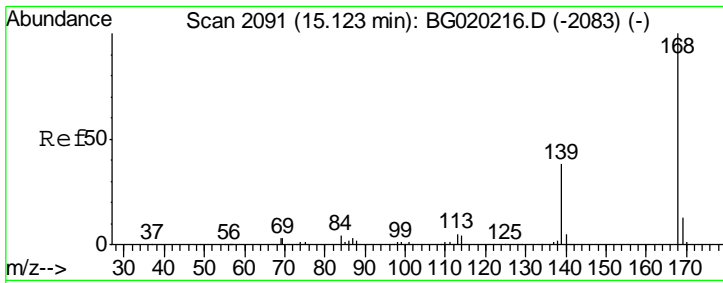
Tgt Ion	Resp	Lower	Upper
184	18381		
63	61.7	49.8	74.6
154	63.3	50.0	75.0



#53
 4-Nitrophenol
 Concen: 19.92 ng/ul
 RT: 14.93 min Scan# 2058
 Delta R.T. -0.00 min
 Lab File: BG020227.D
 Acq: 16 Dec 2015 18:17

Tgt Ion	Resp	Lower	Upper
109	27589		
139	101.6	80.5	120.7
65	120.0	93.4	140.2

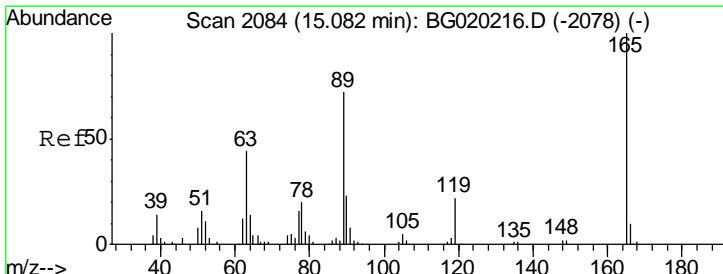
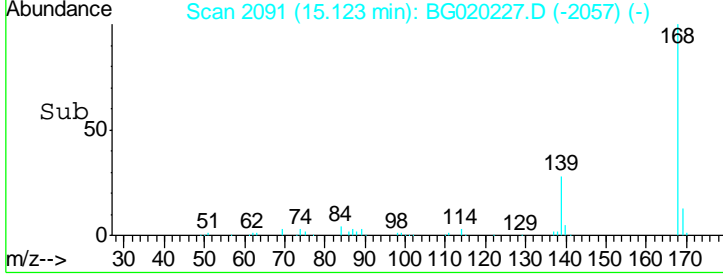
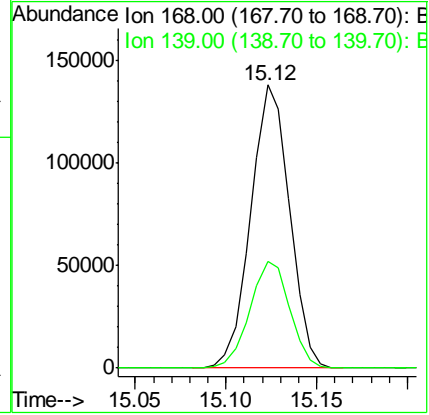
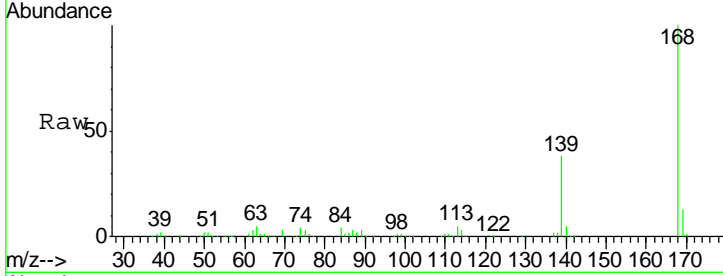




#54
 Dibenzofuran
 Concen: 20.69 ng/ul
 RT: 15.12 min Scan# 2091
 Delta R.T. -0.00 min
 Lab File: BG020227.D
 Acq: 16 Dec 2015 18:17

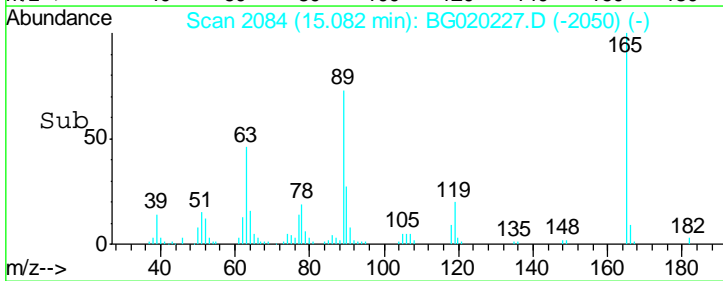
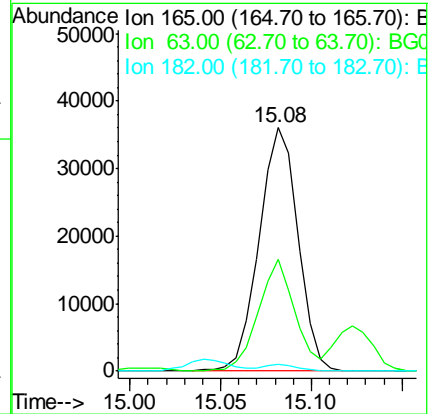
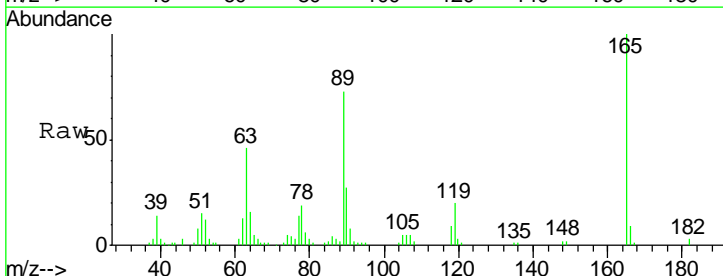
Instrument :
 BNA_G
 ClientSampleID :
 SSTD02040

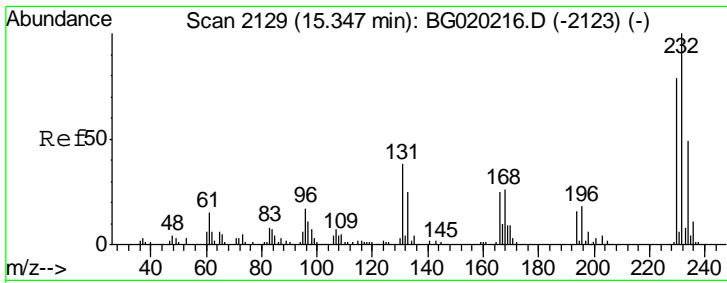
Tgt Ion	Resp	Lower	Upper
168	100		
139	37.6	30.5	45.7



#55
 2,4-Dinitrotoluene
 Concen: 21.55 ng/ul
 RT: 15.08 min Scan# 2084
 Delta R.T. -0.00 min
 Lab File: BG020227.D
 Acq: 16 Dec 2015 18:17

Tgt Ion	Resp	Lower	Upper
165	100		
63	46.0	35.8	53.8
182	3.0	2.2	3.2

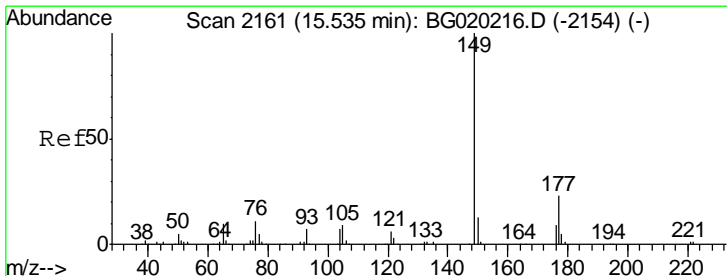
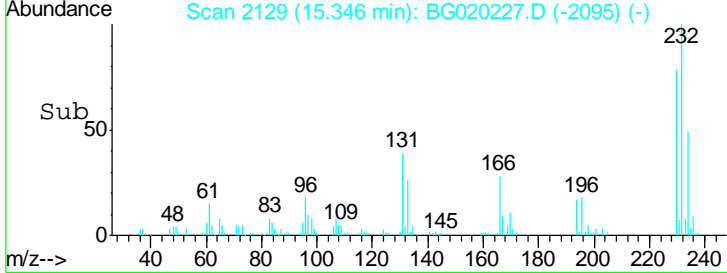
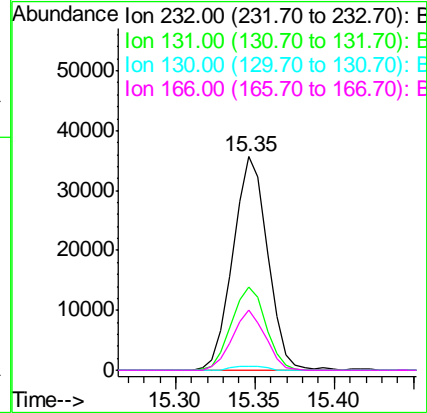
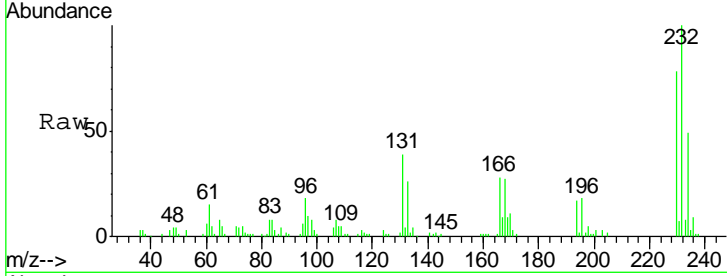




#56
 2,3,4,6-Tetrachlorophenol
 Concen: 21.17 ng/ul
 RT: 15.35 min Scan# 2129
 Delta R.T. -0.00 min
 Lab File: BG020227.D
 Acq: 16 Dec 2015 18:17

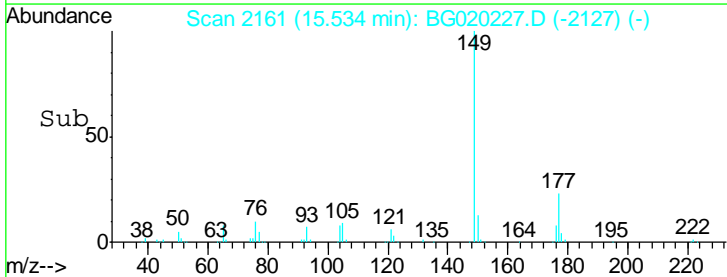
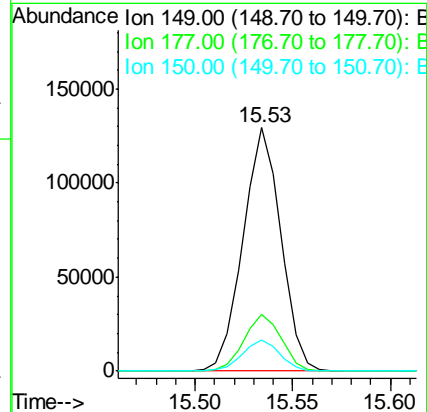
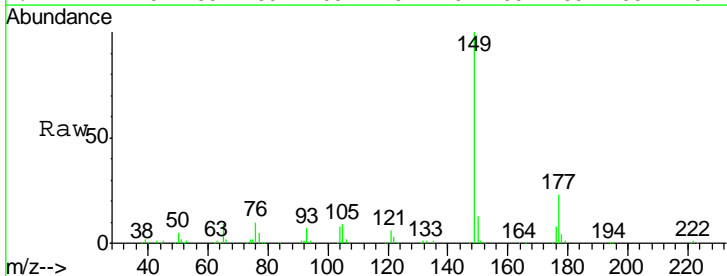
Instrument :
 BNA_G
 ClientSampled :
 SSTD02040

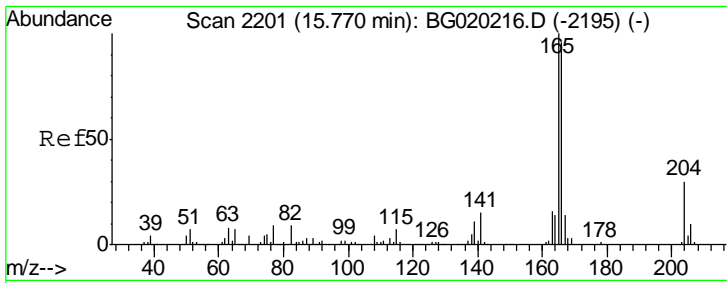
Tgt Ion	Resp	Lower	Upper
232	100		
131	39.0	29.5	44.3
130	1.7	2.1	3.1#
166	27.9	22.0	33.0



#57
 Diethylphthalate
 Concen: 20.44 ng/ul
 RT: 15.53 min Scan# 2161
 Delta R.T. -0.00 min
 Lab File: BG020227.D
 Acq: 16 Dec 2015 18:17

Tgt Ion	Resp	Lower	Upper
149	100		
177	23.3	17.9	26.9
150	12.5	10.2	15.4

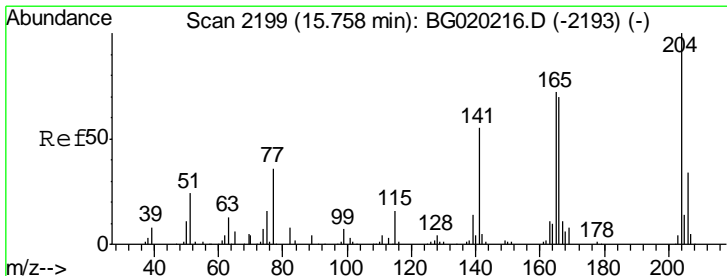
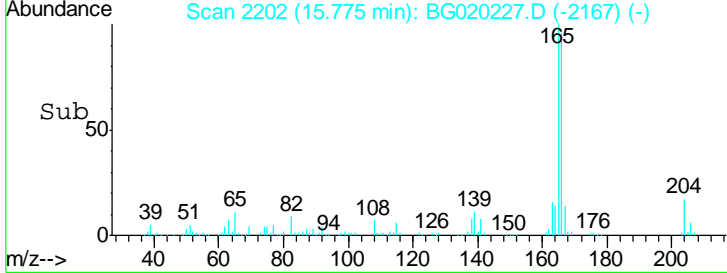
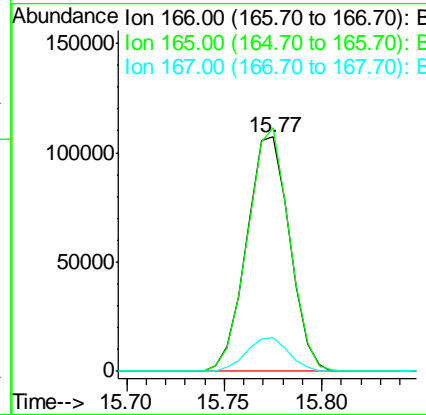
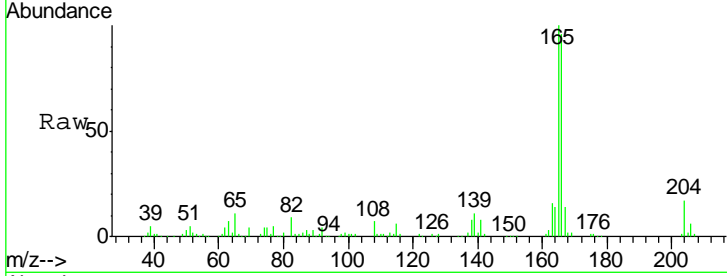




#59
 Fluorene
 Concen: 20.63 ng/ul
 RT: 15.77 min Scan# 2202
 Delta R.T. 0.01 min
 Lab File: BG020227.D
 Acq: 16 Dec 2015 18:17

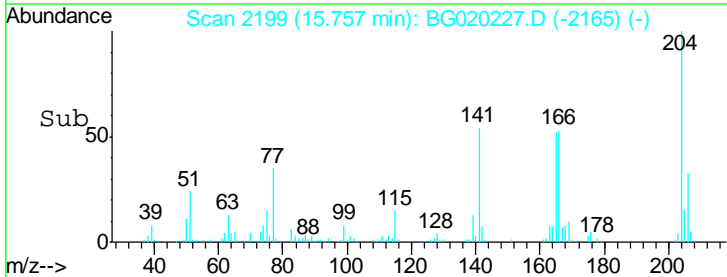
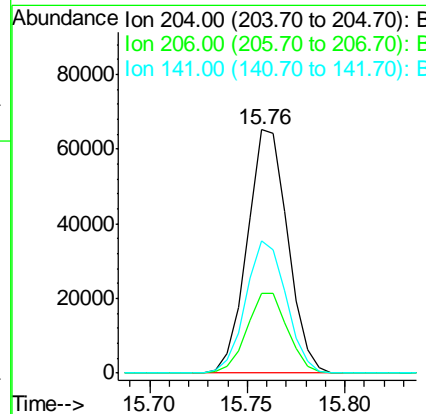
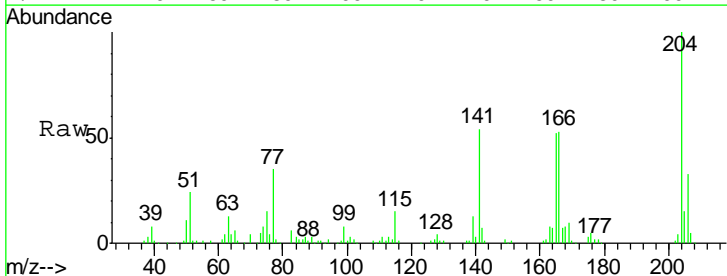
Instrument :
 BNA_G
 ClientSampled :
 SSTD02040

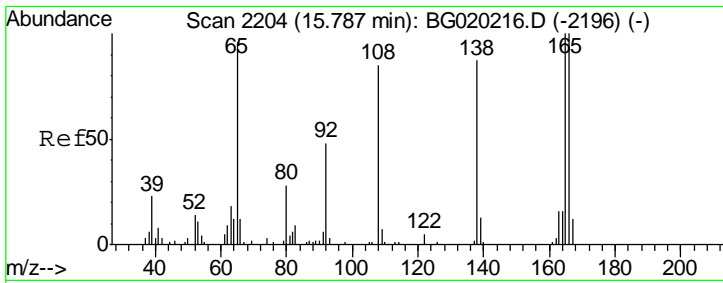
Tgt Ion	Resp	Lower	Upper
166	164577		
166	100		
165	103.9	81.4	122.0
167	14.3	11.2	16.8



#60
 4-Chlorophenyl-phenylether
 Concen: 20.80 ng/ul
 RT: 15.76 min Scan# 2199
 Delta R.T. -0.00 min
 Lab File: BG020227.D
 Acq: 16 Dec 2015 18:17

Tgt Ion	Resp	Lower	Upper
204	93551		
204	100		
206	32.5	25.8	38.6
141	54.4	44.9	67.3

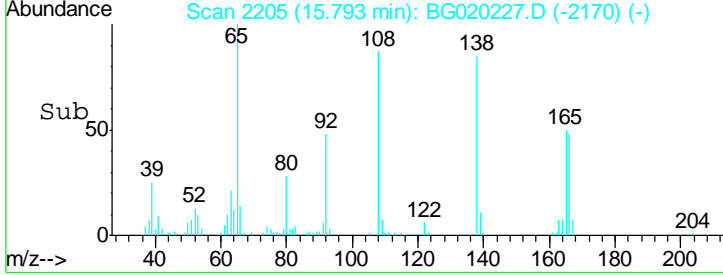
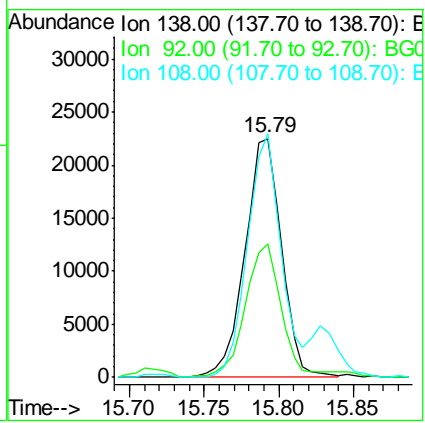
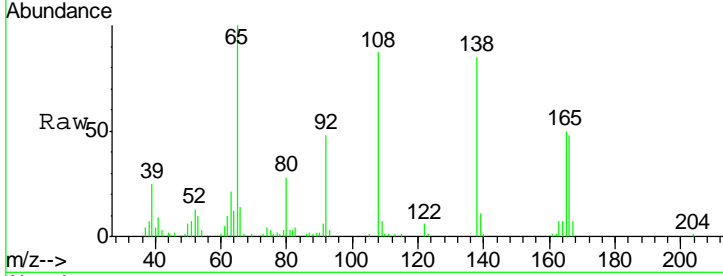




#61
 4-Nitroaniline
 Concen: 21.46 ng/ul
 RT: 15.79 min Scan# 2205
 Delta R.T. 0.01 min
 Lab File: BG020227.D
 Acq: 16 Dec 2015 18:17

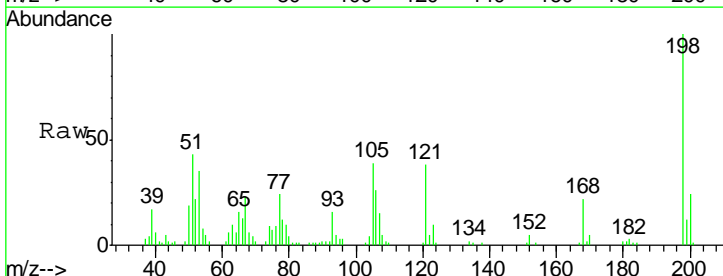
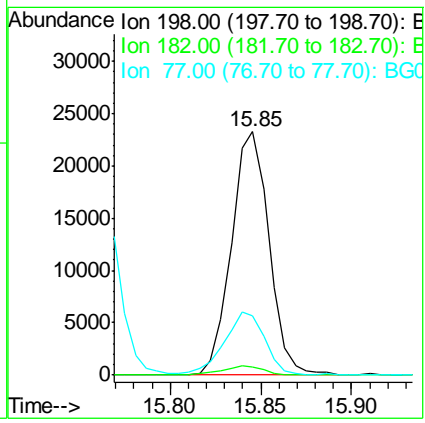
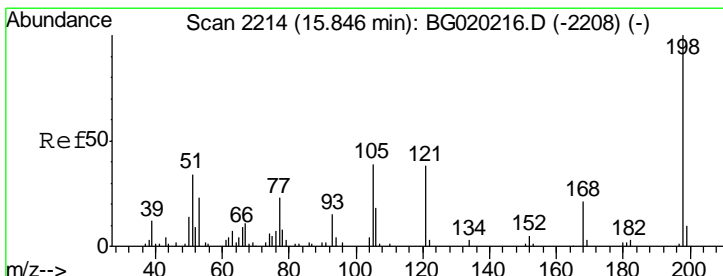
Instrument :
 BNA_G
 ClientSampleID :
 SSTD02040

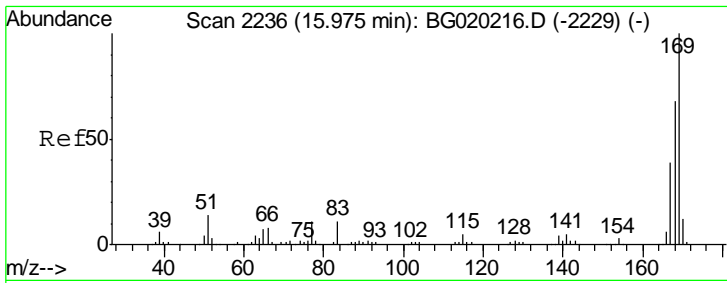
Tgt Ion	Resp	Lower	Upper
138	38205		
92	55.9	45.2	67.8
108	101.9	75.4	113.0



#64
 4,6-Dinitro-2-methylphenol
 Concen: 20.38 ng/ul
 RT: 15.85 min Scan# 2214
 Delta R.T. -0.00 min
 Lab File: BG020227.D
 Acq: 16 Dec 2015 18:17

Tgt Ion	Resp	Lower	Upper
198	33535		
182	3.3	2.5	3.7
77	24.1	17.7	26.5

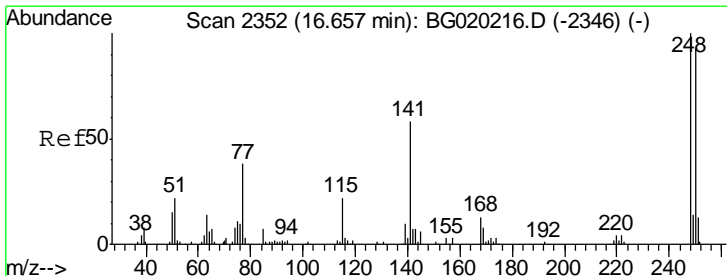
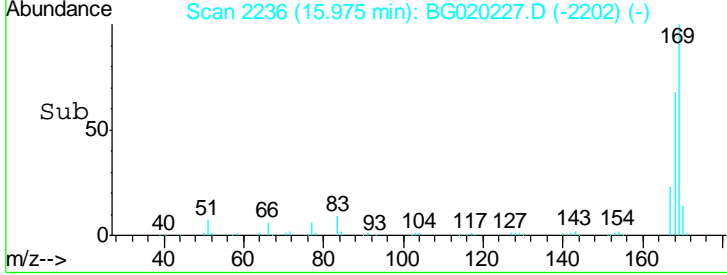
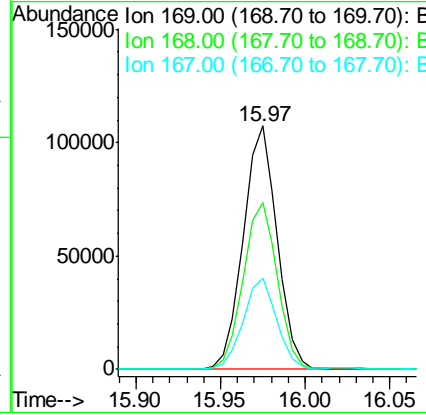
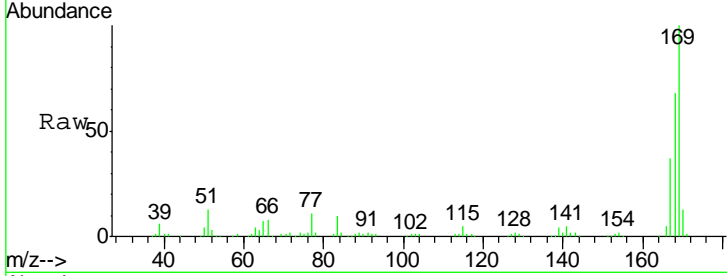




#65
 N-Nitrosodiphenylamine
 Concen: 20.77 ng/ul
 RT: 15.97 min Scan# 2236
 Delta R.T. -0.00 min
 Lab File: BG020227.D
 Acq: 16 Dec 2015 18:17

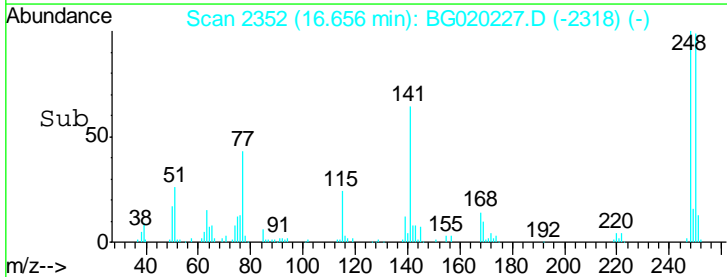
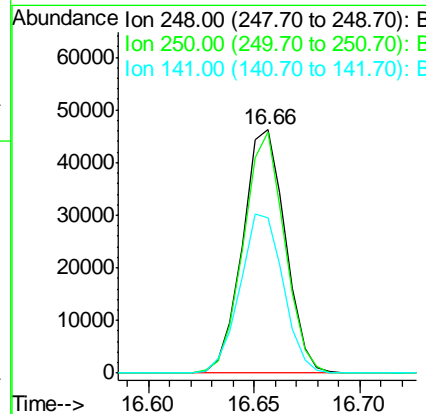
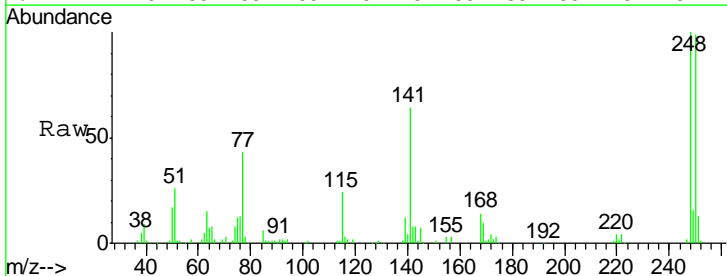
Instrument :
 BNA_G
 ClientSampled :
 SST02040

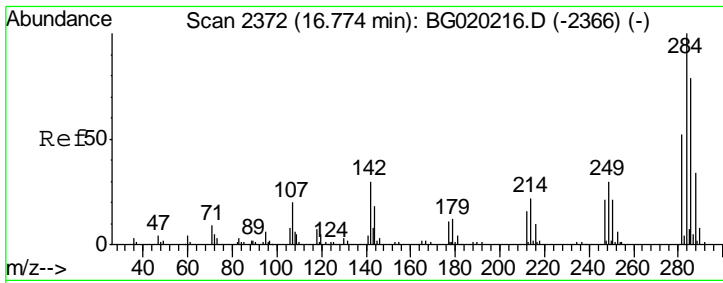
Tgt Ion	Resp	Lower	Upper
169	149338		
168	68.3	54.3	81.5
167	37.4	31.8	47.8



#66
 4-Bromophenyl-phenylether
 Concen: 21.31 ng/ul
 RT: 16.66 min Scan# 2352
 Delta R.T. -0.00 min
 Lab File: BG020227.D
 Acq: 16 Dec 2015 18:17

Tgt Ion	Resp	Lower	Upper
248	64677		
250	99.1	78.2	117.4
141	63.6	49.7	74.5

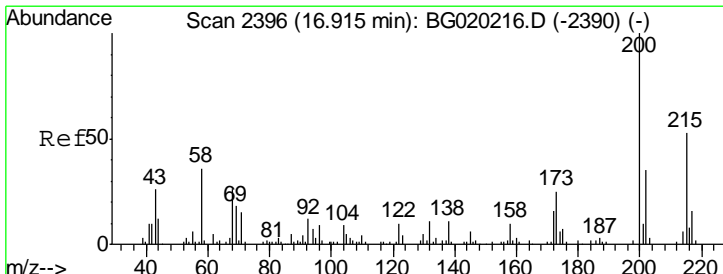
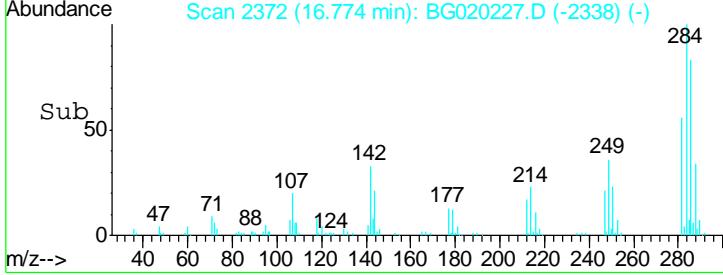
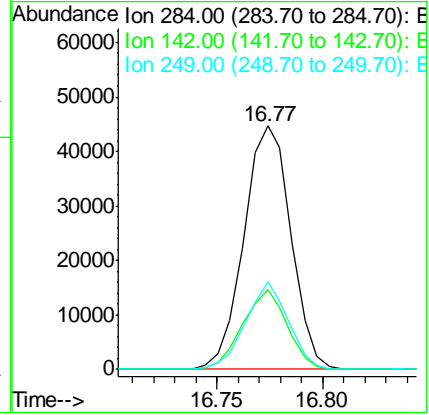
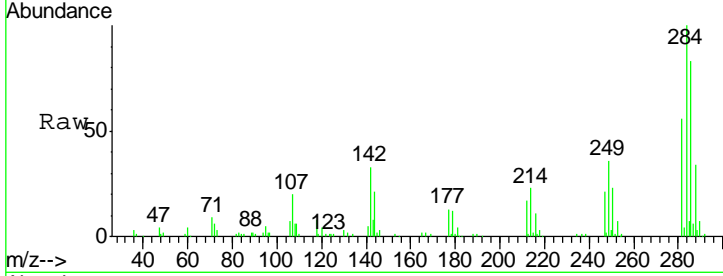




#67
 Hexachlorobenzene
 Concen: 21.06 ng/ul
 RT: 16.77 min Scan# 2372
 Delta R.T. -0.00 min
 Lab File: BG020227.D
 Acq: 16 Dec 2015 18:17

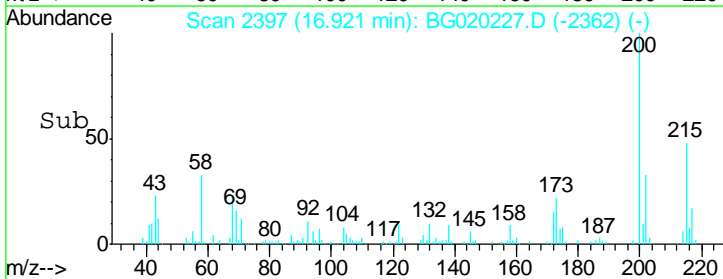
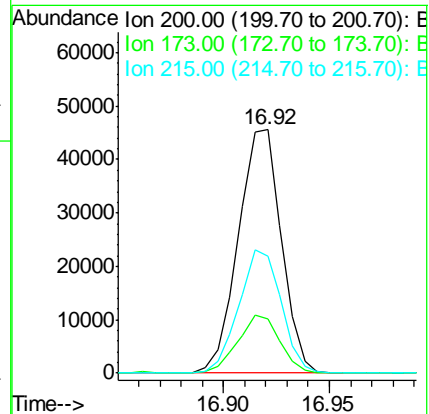
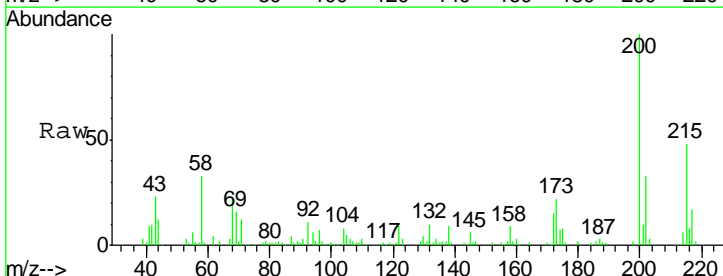
Instrument :
 BNA_G
 ClientSampleId :
 SSTD02040

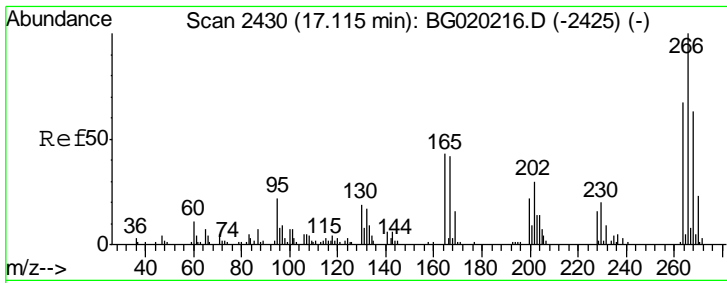
Tgt Ion	Resp	Lower	Upper
284	68643		
142	32.7	25.8	38.8
249	35.8	28.7	43.1



#68
 Atrazine
 Concen: 20.98 ng/ul
 RT: 16.92 min Scan# 2397
 Delta R.T. 0.01 min
 Lab File: BG020227.D
 Acq: 16 Dec 2015 18:17

Tgt Ion	Resp	Lower	Upper
200	64335		
173	22.2	19.6	29.4
215	48.2	40.1	60.1

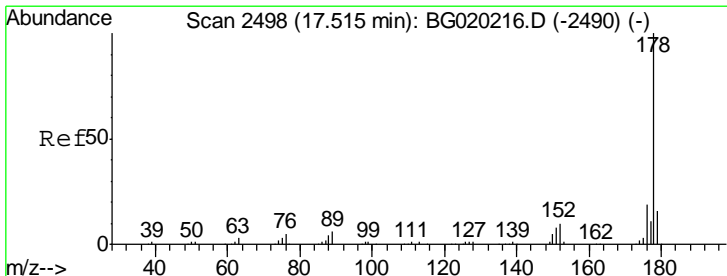
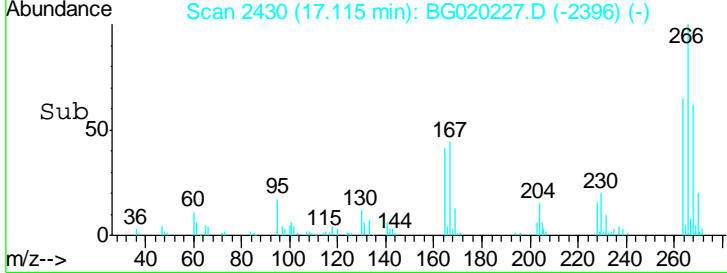
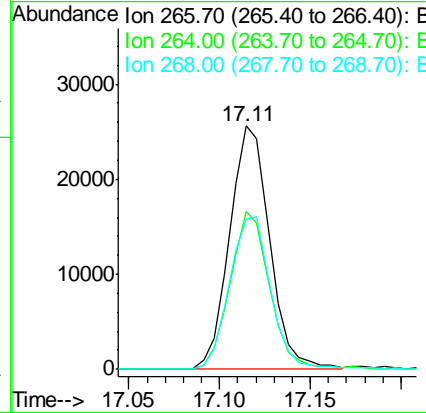
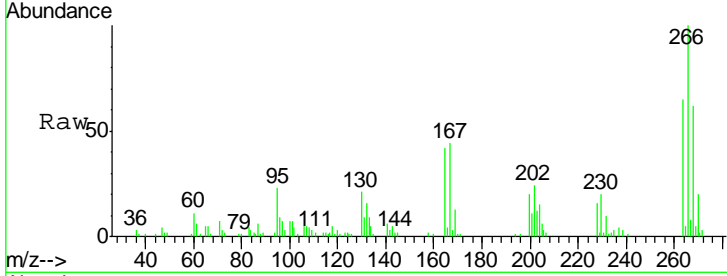




#69
 Pentachlorophenol
 Concen: 20.00 ng/ul
 RT: 17.11 min Scan# 2430
 Delta R.T. -0.00 min
 Lab File: BG020227.D
 Acq: 16 Dec 2015 18:17

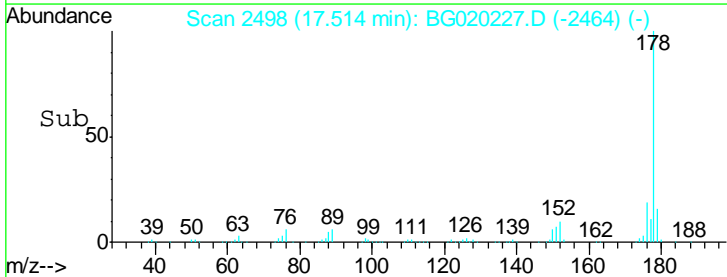
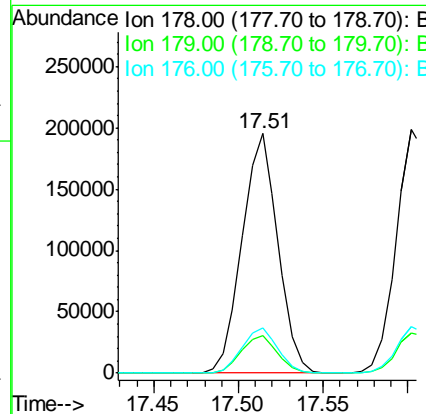
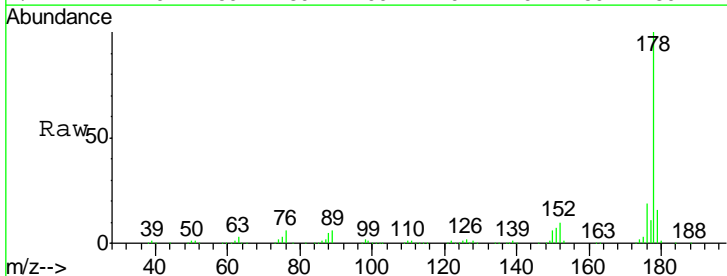
Instrument :
 BNA_G
 ClientSampled :
 SSTD02040

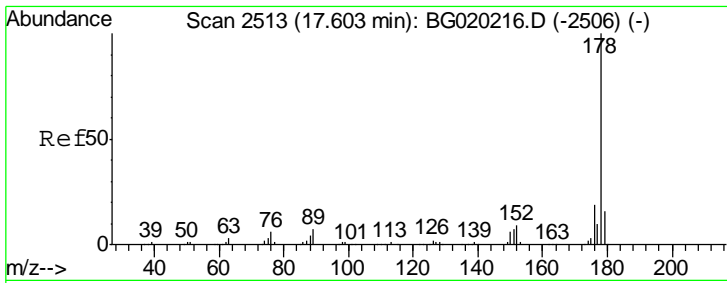
Tgt Ion	Resp	Lower	Upper
266	39303		
264	65.0	52.2	78.2
268	61.8	49.3	73.9



#70
 Phenanthrene
 Concen: 20.33 ng/ul
 RT: 17.51 min Scan# 2498
 Delta R.T. -0.00 min
 Lab File: BG020227.D
 Acq: 16 Dec 2015 18:17

Tgt Ion	Resp	Lower	Upper
178	287571		
179	15.6	12.9	19.3
176	18.8	15.3	22.9

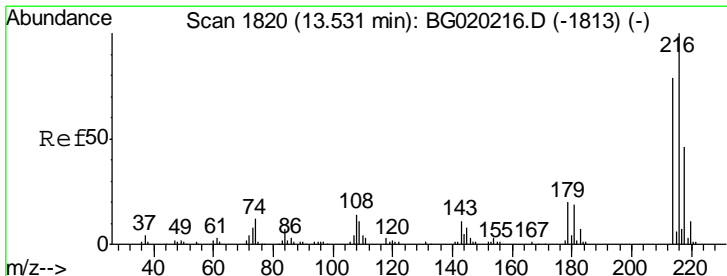
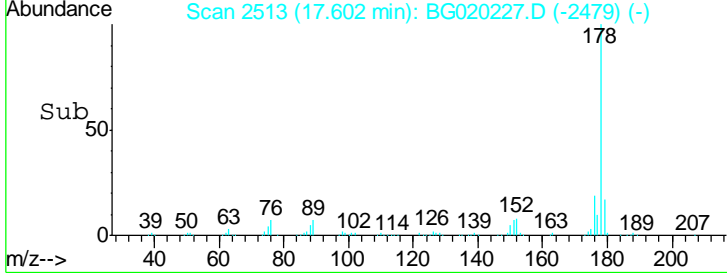
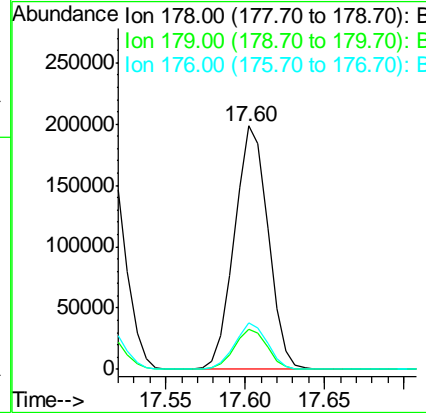
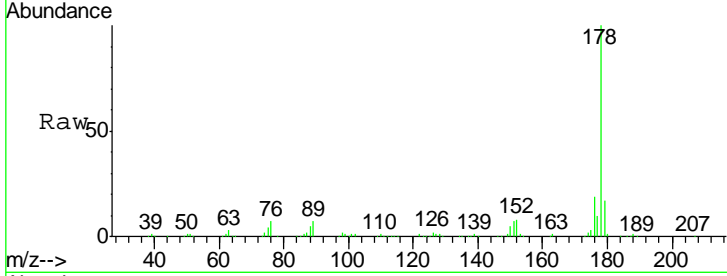




#72
 Anthracene
 Concen: 20.37 ng/ul
 RT: 17.60 min Scan# 2513
 Delta R.T. -0.00 min
 Lab File: BG020227.D
 Acq: 16 Dec 2015 18:17

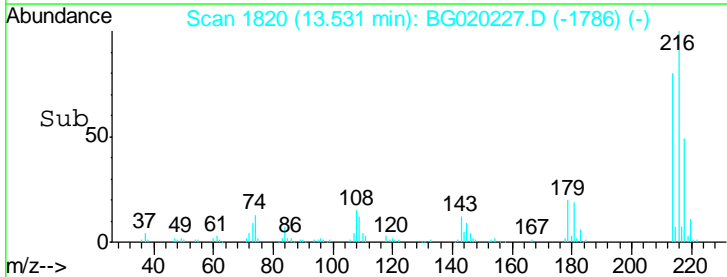
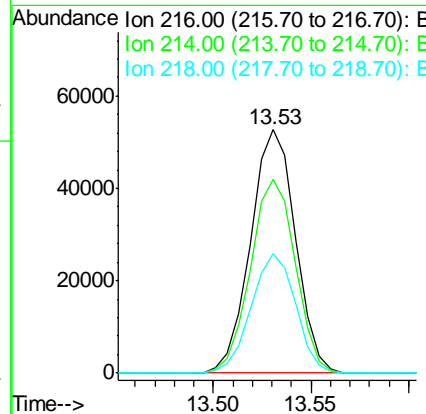
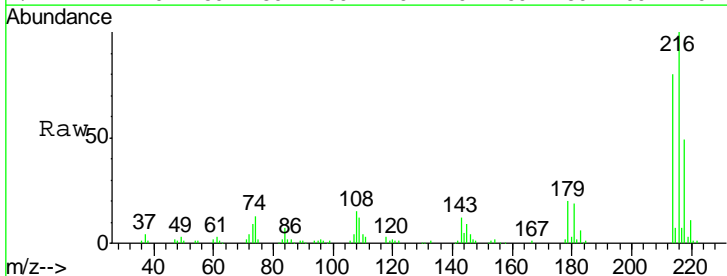
Instrument :
 BNA_G
 ClientSampleID :
 SST02040

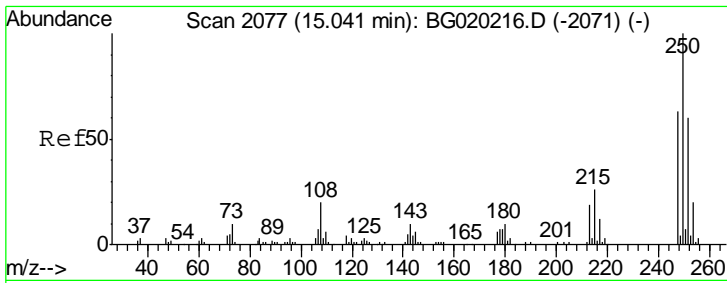
Tgt Ion	Resp	Lower	Upper
178	100		
179	16.5	12.3	18.5
176	19.0	14.3	21.5



#73
 1,2,3,4-Tetrachlorobenzene
 Concen: 20.70 ng/uL
 RT: 13.53 min Scan# 1820
 Delta R.T. -0.00 min
 Lab File: BG020227.D
 Acq: 16 Dec 2015 18:17

Tgt Ion	Resp	Lower	Upper
216	100		
214	79.7	60.7	91.1
218	49.1	36.8	55.2

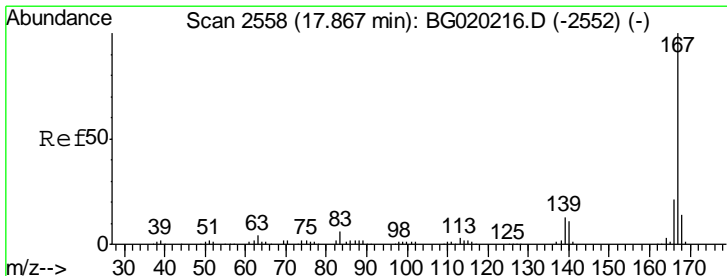
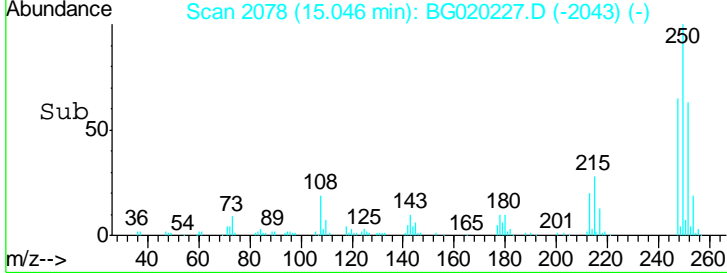
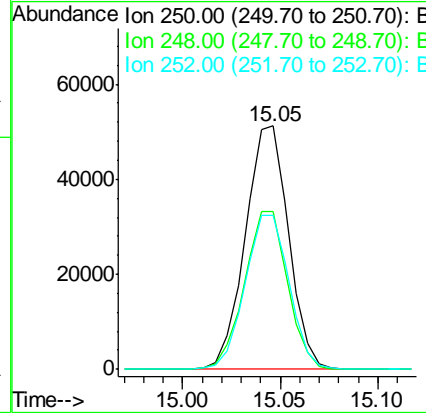
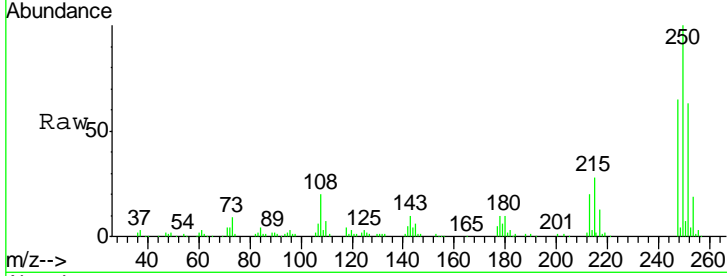




#74
 Pentachlorobenzene
 Concen: 20.91 ng/uL
 RT: 15.05 min Scan# 2078
 Delta R.T. 0.01 min
 Lab File: BG020227.D
 Acq: 16 Dec 2015 18:17

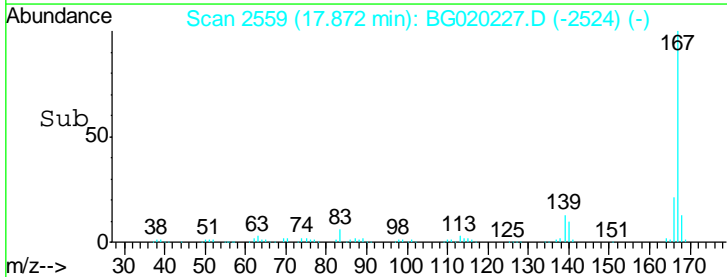
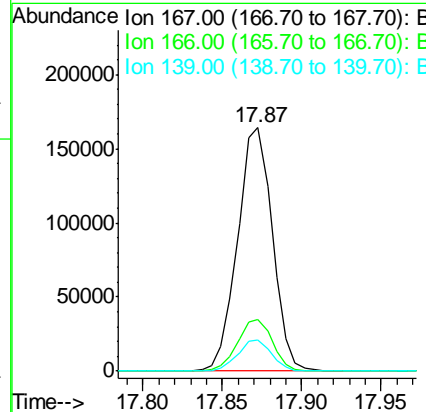
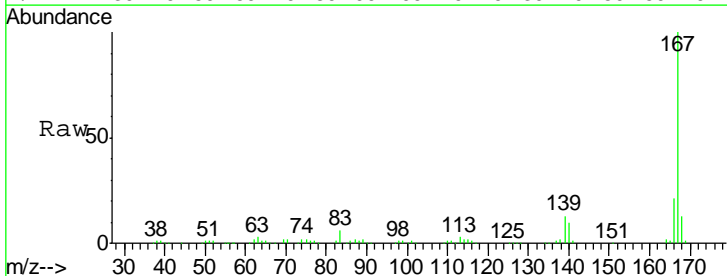
Instrument :
 BNA_G
 ClientSampled :
 SSTD02040

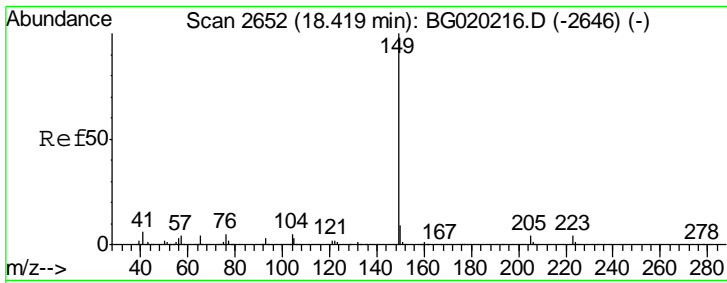
Tgt Ion	Resp	Lower	Upper
250	78551		
248	64.8	49.0	73.6
252	63.0	48.2	72.4



#75
 Carbazole
 Concen: 20.77 ng/uL
 RT: 17.87 min Scan# 2559
 Delta R.T. 0.01 min
 Lab File: BG020227.D
 Acq: 16 Dec 2015 18:17

Tgt Ion	Resp	Lower	Upper
167	250313		
166	21.3	17.0	25.6
139	13.0	10.1	15.1

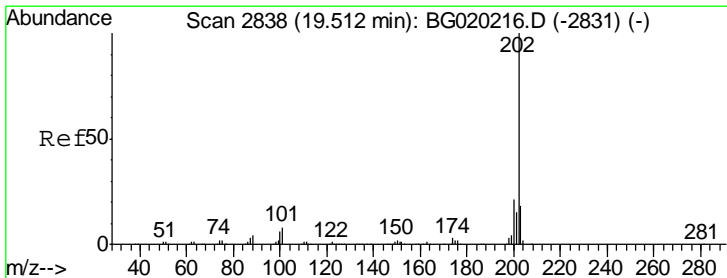
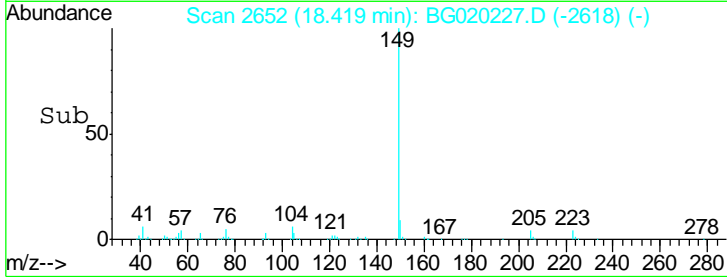
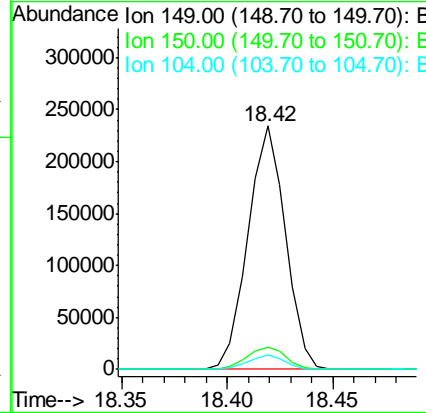
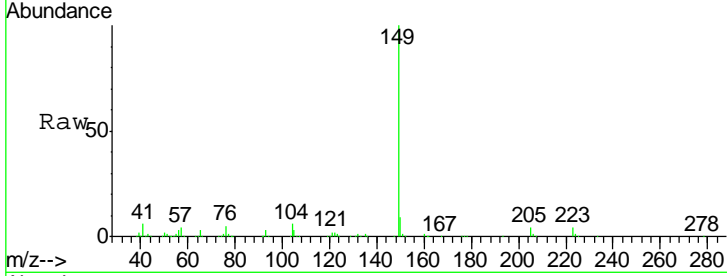




#76
 Di-n-butylphthalate
 Concen: 20.62 ng/ul
 RT: 18.42 min Scan# 2652
 Delta R.T. -0.00 min
 Lab File: BG020227.D
 Acq: 16 Dec 2015 18:17

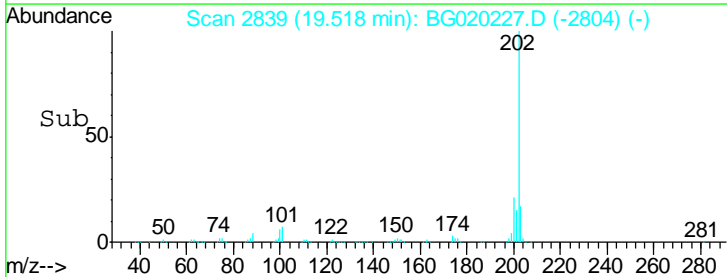
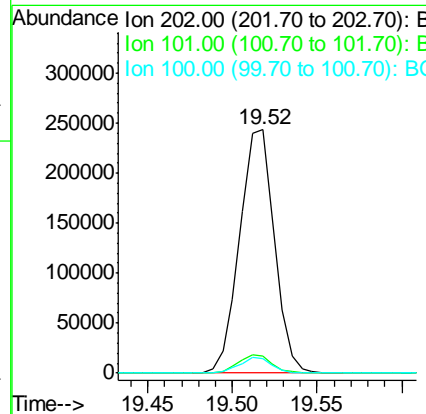
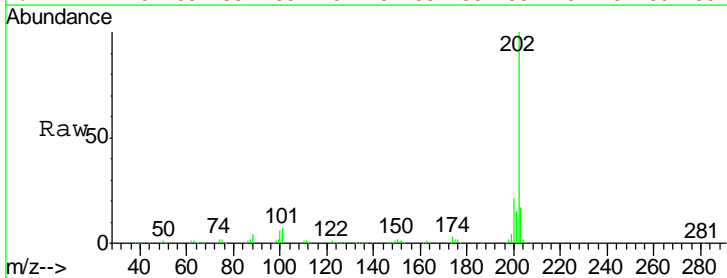
Instrument :
 BNA_G
 ClientSampleID :
 SST02040

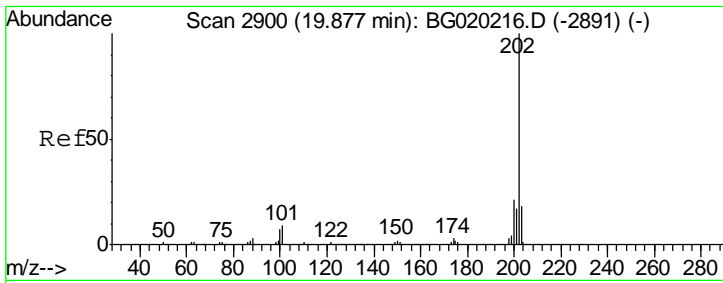
Tgt Ion	Resp	Lower	Upper
149	100		
150	9.0	7.7	11.5
104	6.0	4.2	6.4



#77
 Fluoranthene
 Concen: 21.16 ng/ul
 RT: 19.52 min Scan# 2839
 Delta R.T. 0.01 min
 Lab File: BG020227.D
 Acq: 16 Dec 2015 18:17

Tgt Ion	Resp	Lower	Upper
202	100		
101	7.0	6.2	9.4
100	5.9	5.1	7.7

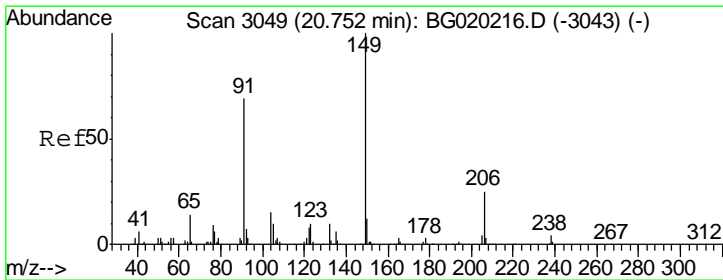
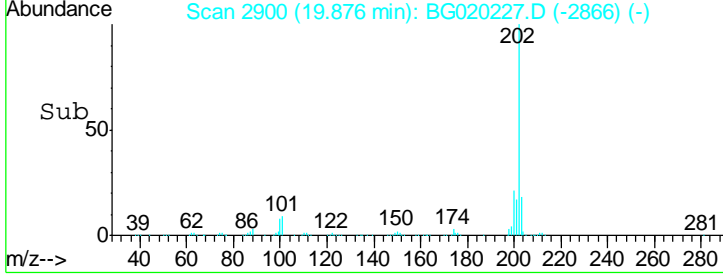
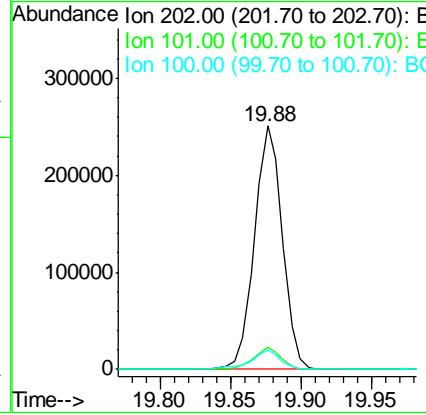
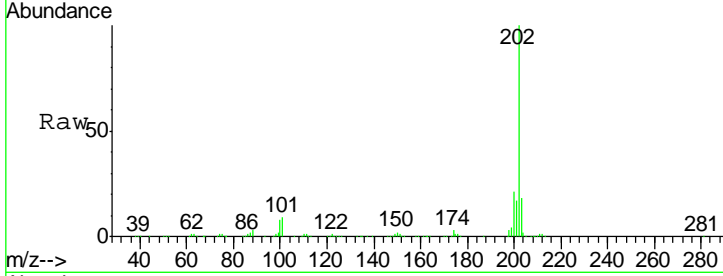




#80
 Pyrene
 Concen: 19.80 ng/ul
 RT: 19.88 min Scan# 2900
 Delta R.T. -0.00 min
 Lab File: BG020227.D
 Acq: 16 Dec 2015 18:17

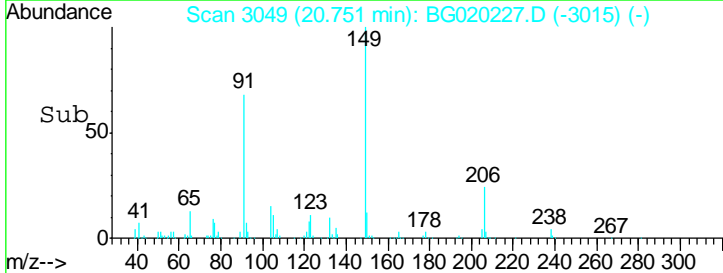
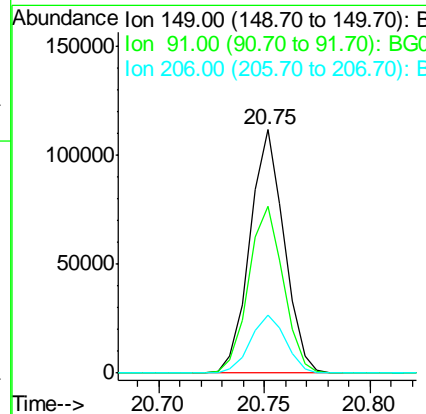
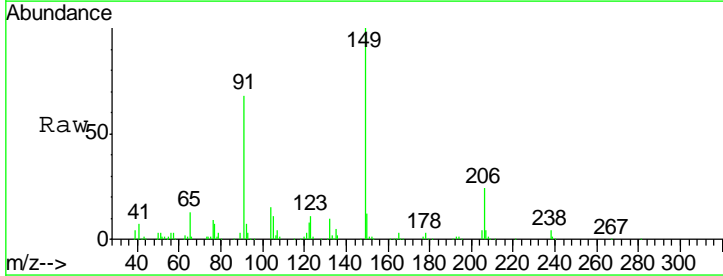
Instrument :
 BNA_G
 ClientSampled :
 SST02040

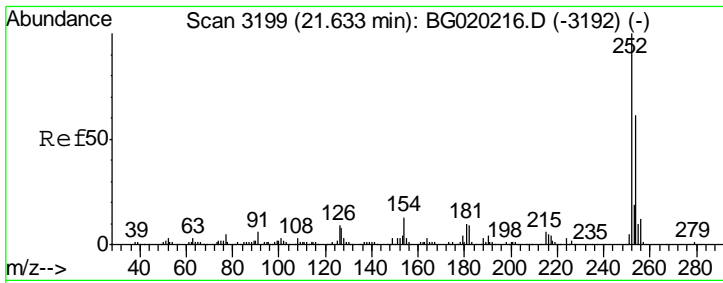
Tgt Ion	Ratio	Lower	Upper
202	100		
101	8.9	7.0	10.4
100	8.1	6.4	9.6



#81
 Butylbenzylphthalate
 Concen: 20.59 ng/ul
 RT: 20.75 min Scan# 3049
 Delta R.T. -0.00 min
 Lab File: BG020227.D
 Acq: 16 Dec 2015 18:17

Tgt Ion	Ratio	Lower	Upper
149	100		
91	68.3	59.1	88.7
206	23.8	19.6	29.4

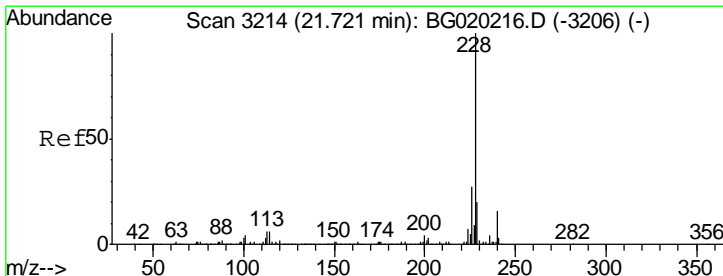
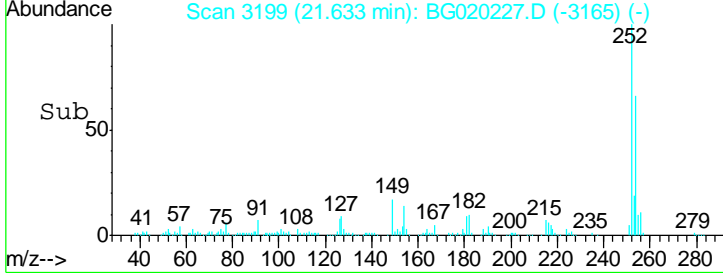
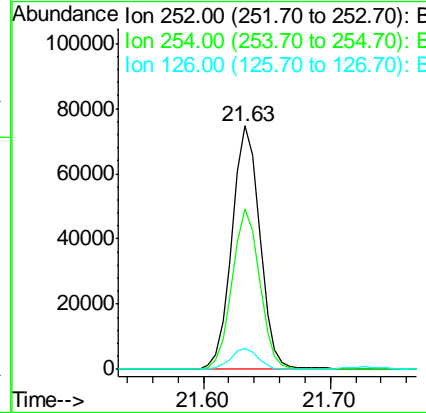
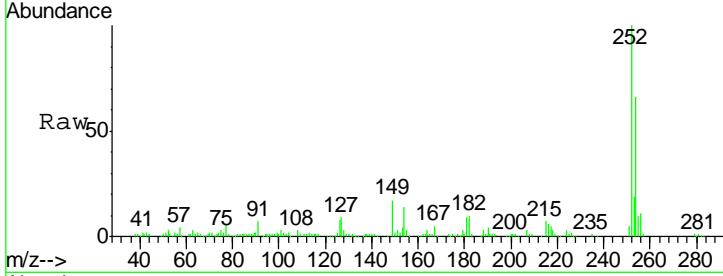




#82
 3,3'-Dichlorobenzidine
 Concen: 21.44 ng/ul
 RT: 21.63 min Scan# 3199
 Delta R.T. -0.00 min
 Lab File: BG020227.D
 Acq: 16 Dec 2015 18:17

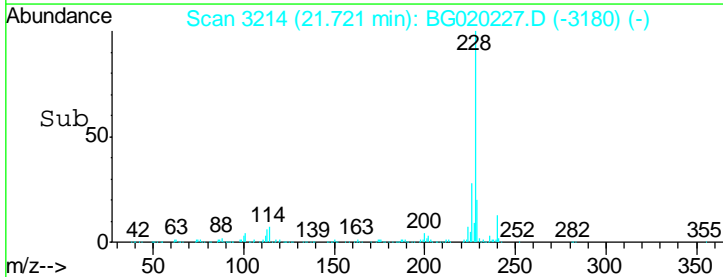
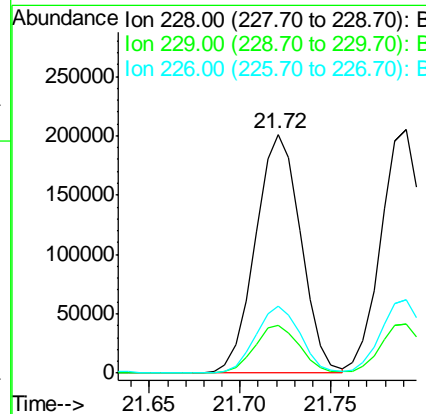
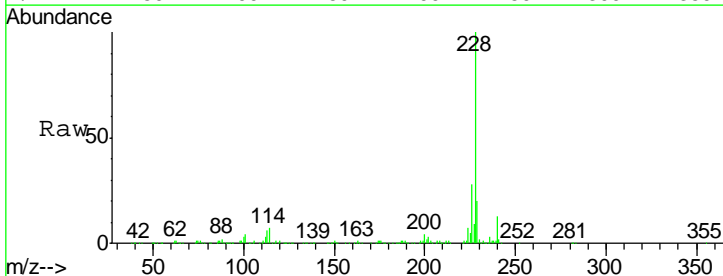
Instrument :
 BNA_G
 ClientSampled :
 SST02040

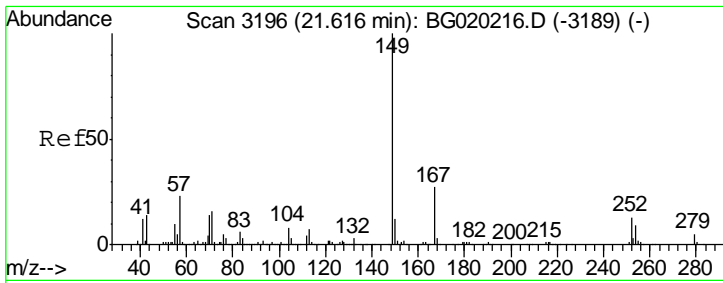
Tgt Ion	Resp	Lower	Upper
252	113609		
254	65.8	49.3	73.9
126	8.5	6.5	9.7



#83
 Benzo(a)anthracene
 Concen: 20.63 ng/ul
 RT: 21.72 min Scan# 3214
 Delta R.T. -0.00 min
 Lab File: BG020227.D
 Acq: 16 Dec 2015 18:17

Tgt Ion	Resp	Lower	Upper
228	349109		
229	19.9	15.8	23.8
226	28.2	21.8	32.6

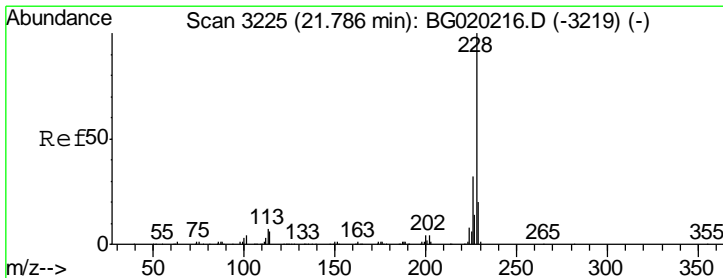
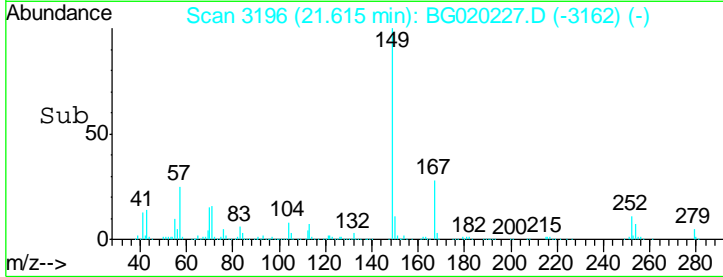
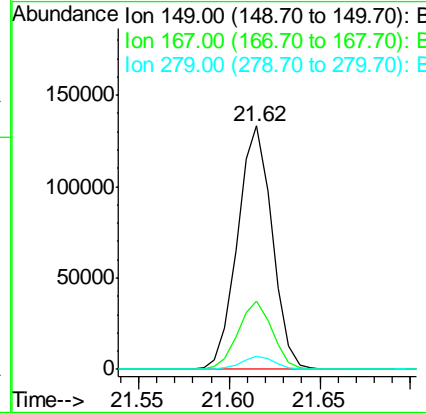
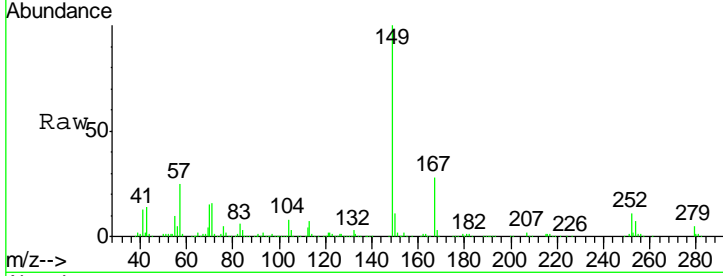




#84
 Bis(2-ethylhexyl)phthalate
 Concen: 20.18 ng/ul
 RT: 21.62 min Scan# 3196
 Delta R.T. -0.00 min
 Lab File: BG020227.D
 Acq: 16 Dec 2015 18:17

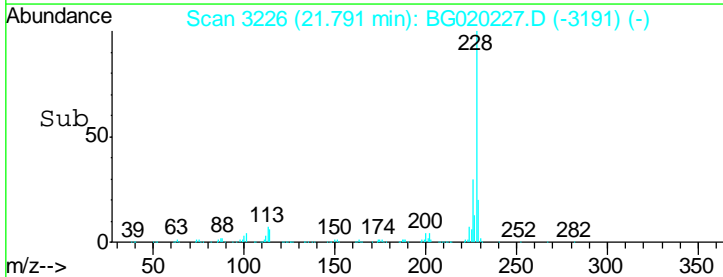
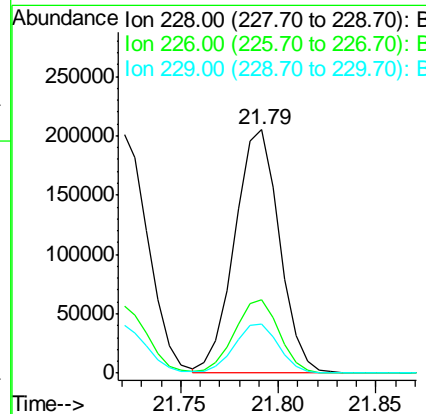
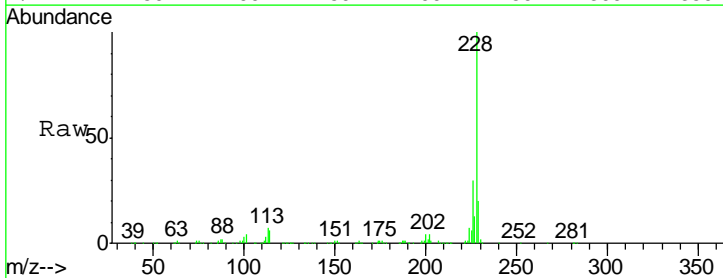
Instrument :
 BNA_G
 ClientSampled :
 SSTD02040

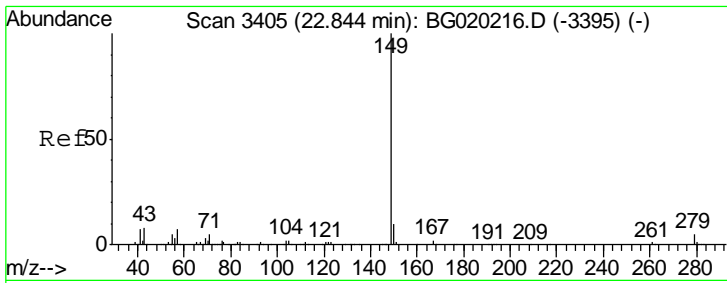
Tgt Ion	Resp	Lower	Upper
149	176032		
167	27.9	22.8	34.2
279	5.3	4.1	6.1



#85
 Chrysene
 Concen: 20.32 ng/ul
 RT: 21.79 min Scan# 3226
 Delta R.T. 0.01 min
 Lab File: BG020227.D
 Acq: 16 Dec 2015 18:17

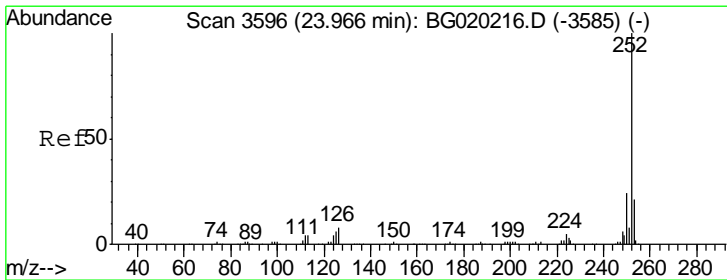
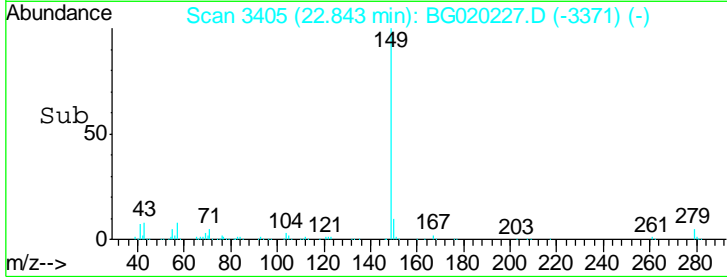
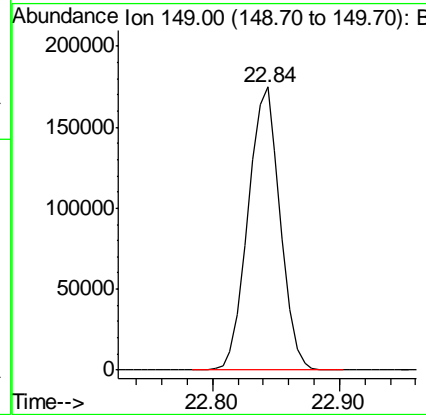
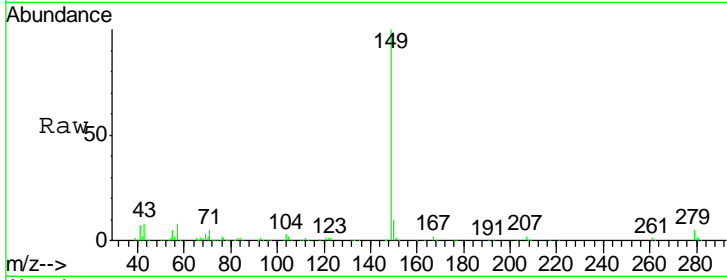
Tgt Ion	Resp	Lower	Upper
228	323888		
226	30.3	23.9	35.9
229	20.4	15.6	23.4





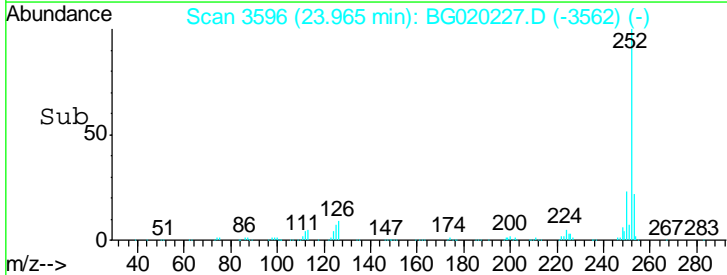
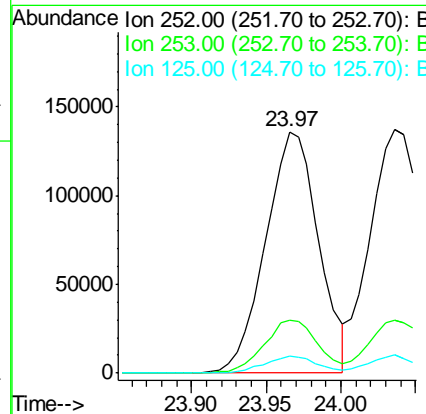
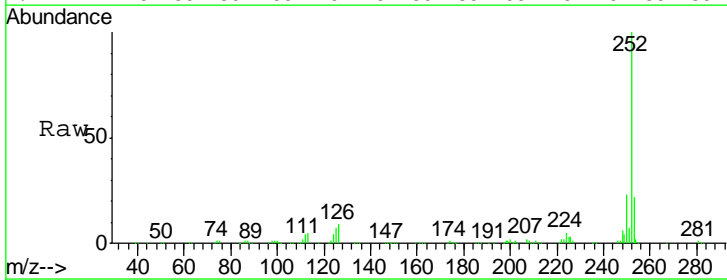
#87
 Di-n-octyl phthalate
 Concen: 20.12 ng/ul
 RT: 22.84 min Scan# 3405
 Delta R.T. -0.00 min
 Lab File: BG020227.D
 Acq: 16 Dec 2015 18:17
 Tgt Ion:149 Resp: 306350

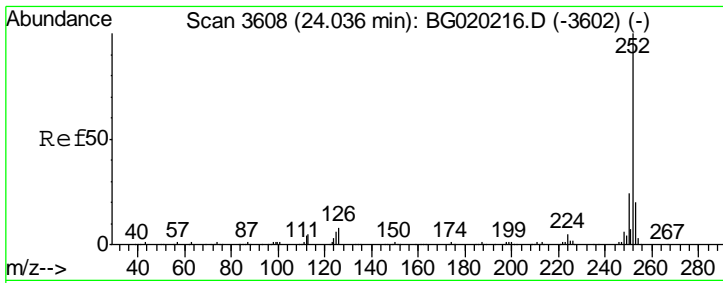
Instrument :
 BNA_G
 ClientSampleId :
 SSTD02040



#88
 Benzo(b)fluoranthene
 Concen: 20.12 ng/ul
 RT: 23.97 min Scan# 3596
 Delta R.T. -0.00 min
 Lab File: BG020227.D
 Acq: 16 Dec 2015 18:17
 Tgt Ion:252 Resp: 335634

Ion	Ratio	Lower	Upper
252	100		
253	21.9	16.7	25.1
125	6.8	6.2	9.2

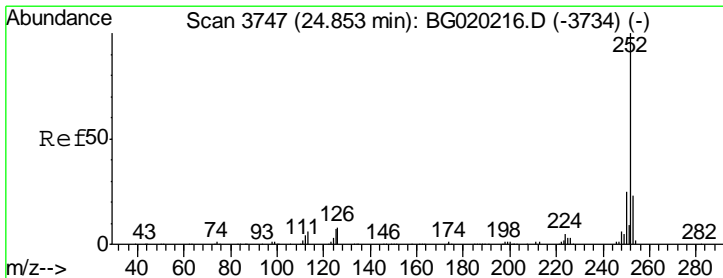
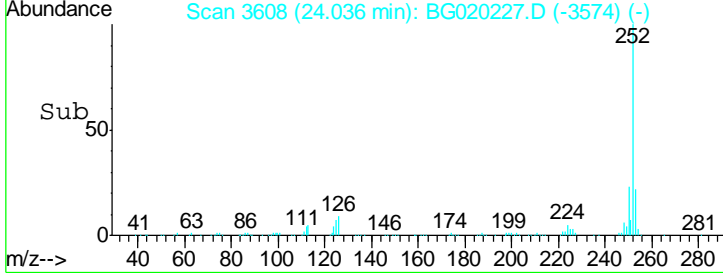
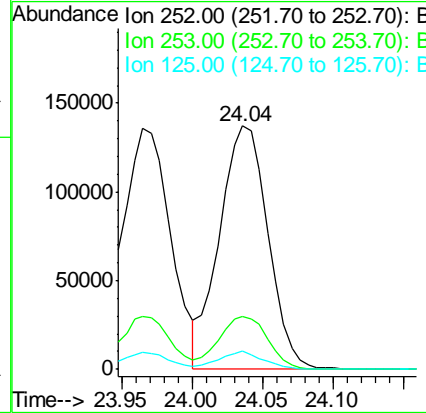
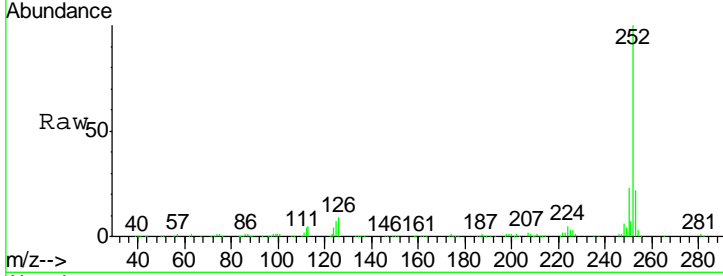




#89
 Benzo(k)fluoranthene
 Concen: 20.36 ng/ul
 RT: 24.04 min Scan# 3608
 Delta R.T. -0.00 min
 Lab File: BG020227.D
 Acq: 16 Dec 2015 18:17

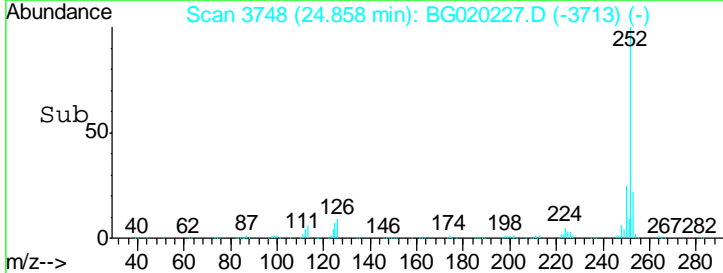
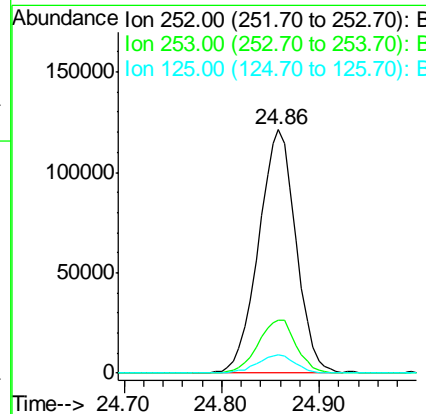
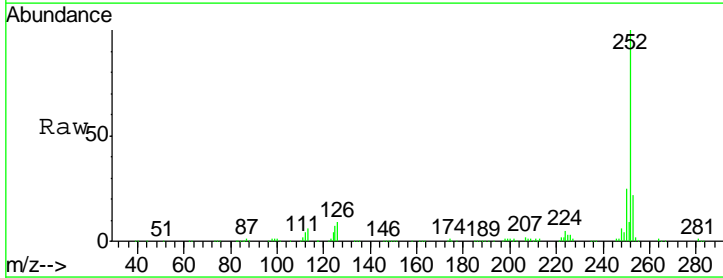
Instrument :
 BNA_G
 ClientSampled :
 SST02040

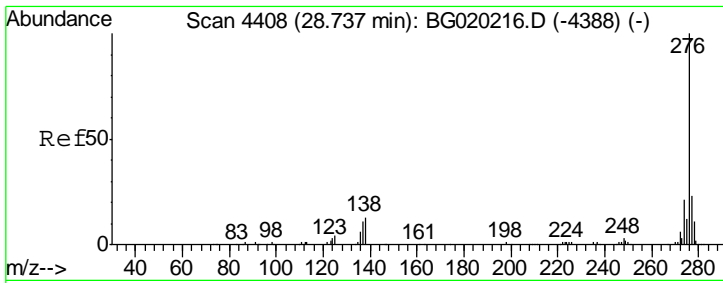
Tgt Ion	Resp	Lower	Upper
252	100		
253	21.7	17.9	26.9
125	7.4	5.8	8.6



#91
 Benzo(a)pyrene
 Concen: 20.43 ng/ul
 RT: 24.86 min Scan# 3748
 Delta R.T. 0.01 min
 Lab File: BG020227.D
 Acq: 16 Dec 2015 18:17

Tgt Ion	Resp	Lower	Upper
252	100		
253	21.6	17.0	25.4
125	7.4	6.2	9.4

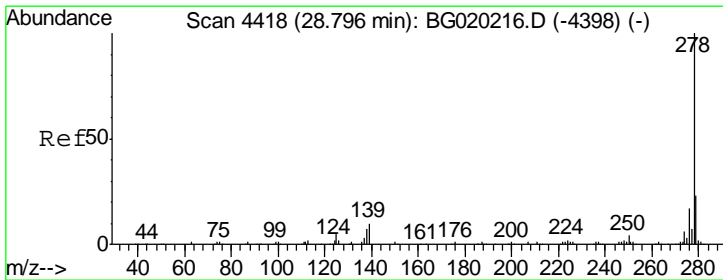
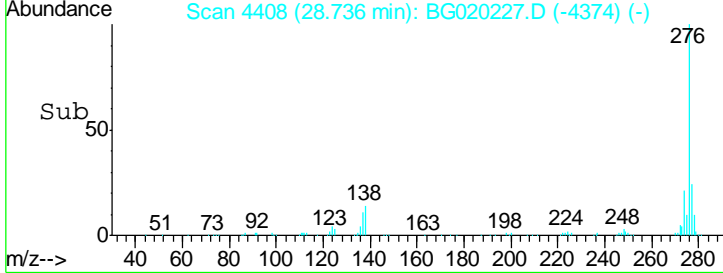
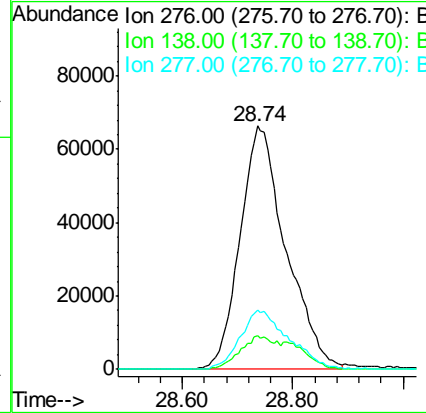
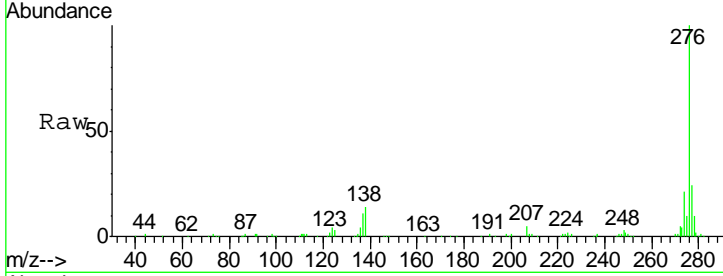




#92
 Indeno(1,2,3-cd)pyrene
 Concen: 20.31 ng/ul
 RT: 28.74 min Scan# 4408
 Delta R.T. -0.00 min
 Lab File: BG020227.D
 Acq: 16 Dec 2015 18:17

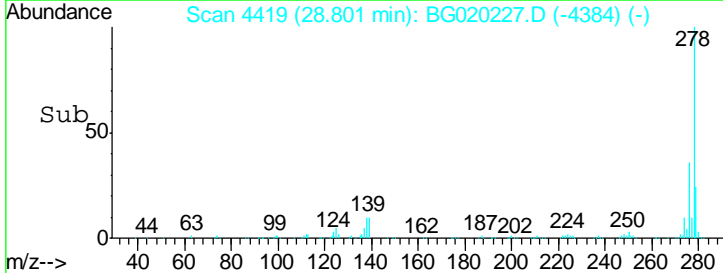
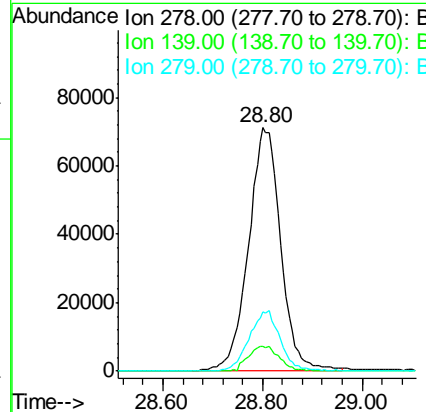
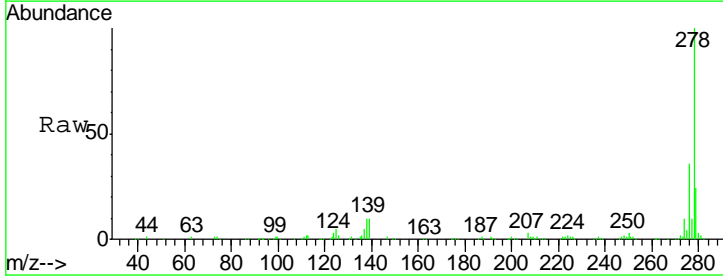
Instrument :
 BNA_G
 ClientSampled :
 SSTD02040

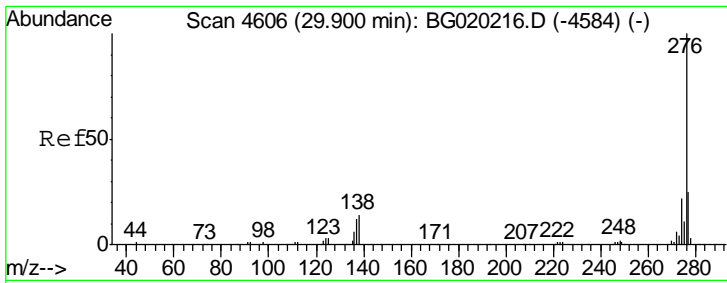
Tgt Ion	Resp	Lower	Upper
276	382438		
138	13.7	11.4	17.0
277	24.5	17.4	26.0



#93
 Dibenzo(a,h)anthracene
 Concen: 20.43 ng/ul
 RT: 28.80 min Scan# 4419
 Delta R.T. 0.01 min
 Lab File: BG020227.D
 Acq: 16 Dec 2015 18:17

Tgt Ion	Resp	Lower	Upper
278	319360		
139	10.0	9.4	14.2
279	24.3	19.4	29.0





#94
 Benzo(g,h,i)perylene
 Concen: 19.95 ng/ul
 RT: 29.91 min Scan# 4608
 Delta R.T. 0.01 min
 Lab File: BG020227.D
 Acq: 16 Dec 2015 18:17

Instrument :
 BNA_G
ClientSampleId :
 SSTD02040

Tgt Ion	Resp	Lower	Upper
276	307939		
276	100		
138	13.9	10.8	16.2
277	22.5	19.9	29.9

