

Data Path : Z:\HPCHEM1\BNA_G\DATA\BG121715\
 Data File : BG020238.D
 Acq On : 17 Dec 2015 2:08
 Operator : UM/SJ
 Sample : G4767-13
 Misc :
 ALS Vial : 24 Sample Multiplier: 1

Instrument :
 BNA_G
 ClientSampleId :
 D9N35

Quant Time: Dec 17 05:52:47 2015
 Quant Method : Z:\HPCHEM1\BNA_G\METHODS\SOM02.2-EPA-BG121415.M
 Quant Title : SVOA CALIBRATION
 QLast Update : Thu Dec 17 03:53:00 2015
 Response via : Initial Calibration

Internal Standards	R.T.	QIon	Response	Conc	Units	Dev(Min)
1) 1,4-Dichlorobenzene-d4	8.10	152	24989	20.00	ng/ul	0.00
18) Naphthalene-d8	10.92	136	108958	20.00	ng/ul	0.00
36) Acenaphthene-d10	14.73	164	82690	20.00	ng/ul	0.00
62) Phenanthrene-d10	17.48	188	163585	20.00	ng/ul	0.00
78) Chrysene-d12	21.75	240	196923	20.00	ng/ul	0.00
86) Perylene-d12	25.01	264	191447	20.00	ng/ul	0.00

System Monitoring Compounds

3) 1,4-Dioxane-d8	3.47	96	950	2.10	ng/uL	0.00
5) Phenol-d5	7.24	99	30037	13.63	ng/ul	0.00
7) Bis-(2-Chloroethyl)ether-d	7.42	67	19043	14.48	ng/ul	0.00
9) 2-Chlorophenol-d4	7.63	132	23162	14.45	ng/ul	0.00
13) 4-Methylphenol-d8	8.80	113	26373	13.99	ng/ul	0.00
19) Nitrobenzene-d5	9.27	128	14628	17.22	ng/ul	0.00
22) 2-Nitrophenol-d4	9.99	143	16354	17.30	ng/ul	0.00
26) 2,4-Dichlorophenol-d3	10.53	165	28969	15.13	ng/ul	0.00
29) 4-Chloroaniline-d4	11.05	131	39842	18.53	ng/ul	0.00
44) Dimethylphthalate-d6	14.14	166	100608	15.04	ng/ul	0.00
47) Acenaphthylene-d8	14.42	160	114464	14.71	ng/ul	0.00
52) 4-Nitrophenol-d4	14.92	143	16146	13.46	ng/ul	0.00
58) Fluorene-d10	15.72	176	90213	14.87	ng/ul	0.00
63) 4,6-Dinitro-2-methylphenol	15.86	200	4789	4.94	ng/ul	0.04
71) Anthracene-d10	17.60	188	124664	16.54	ng/ul	0.04
79) Pyrene-d10	19.86	212	146036	15.91	ng/ul	0.01
90) Benzo(a)pyrene-d12	24.79	264	162867	17.06	ng/ul	0.01

Target Compounds

Target Compounds	R.T.	QIon	Response	Conc	Units	Qvalue
14) Acetophenone	8.93	105	5119	1.73	ng/ul	91
28) Naphthalene	11.00	128	4240888	745.33	ng/ul#	69
34) 2-Methylnaphthalene	12.59	142	2024863	465.89	ng/ul	99
35) 1-Methylnaphthalene	12.80	142	1135464	271.75	ng/ul#	95
41) 1,1'-Biphenyl	13.57	154	837296	134.22	ng/ul	100
45) Dimethylphthalate	14.18	163	40358	5.91	ng/ul	98
48) Acenaphthylene	14.45	152	153185	18.53	ng/ul#	89
50) Acenaphthene	14.82	153	2876998	517.21	ng/ul#	86
54) Dibenzofuran	15.15	168	2807446	339.28	ng/ul#	74
59) Fluorene	15.81	166	2857491	430.03	ng/ul#	97
70) Phenanthrene	17.57	178	6873453	768.17	ng/ul#	39
72) Anthracene	17.63	178	1257103	138.52	ng/ul#	91
75) Carbazole	17.88	167	522882	68.57	ng/ul	97
77) Fluoranthene	19.55	202	4648274	444.49	ng/ul#	60
80) Pyrene	19.91	202	3692123	309.78	ng/ul#	74
83) Benzo(a)anthracene	21.73	228	1377210	119.86	ng/ul#	91
85) Chrysene	21.80	228	1098090	101.47	ng/ul#	91
88) Benzo(b)fluoranthene	23.98	252	648044	56.24	ng/ul	97
89) Benzo(k)fluoranthene	24.04	252	208895	18.89	ng/ul	96
91) Benzo(a)pyrene	24.87	252	346954	31.76	ng/ul	97
92) Indeno(1,2,3-cd)pyrene	28.73	276	104828	8.06	ng/ul	98
93) Dibenzo(a,h)anthracene	28.77	278	33431	3.10	ng/ul#	90
94) Benzo(g,h,i)perylene	29.89	276	70631	6.62	ng/ul	98

Data Path : Z:\HPCHEM1\BNA_G\DATA\BG121715\
 Data File : BG020238.D
 Acq On : 17 Dec 2015 2:08
 Operator : UM/SJ
 Sample : G4767-13
 Misc :
 ALS Vial : 24 Sample Multiplier: 1

Instrument :
 BNA_G
ClientSampleId :
 D9N35

Quant Time: Dec 17 05:52:47 2015
 Quant Method : Z:\HPCHEM1\BNA_G\METHODS\SOM02.2-EPA-BG121415.M
 Quant Title : SVOA CALIBRATION
 QLast Update : Thu Dec 17 03:53:00 2015
 Response via : Initial Calibration

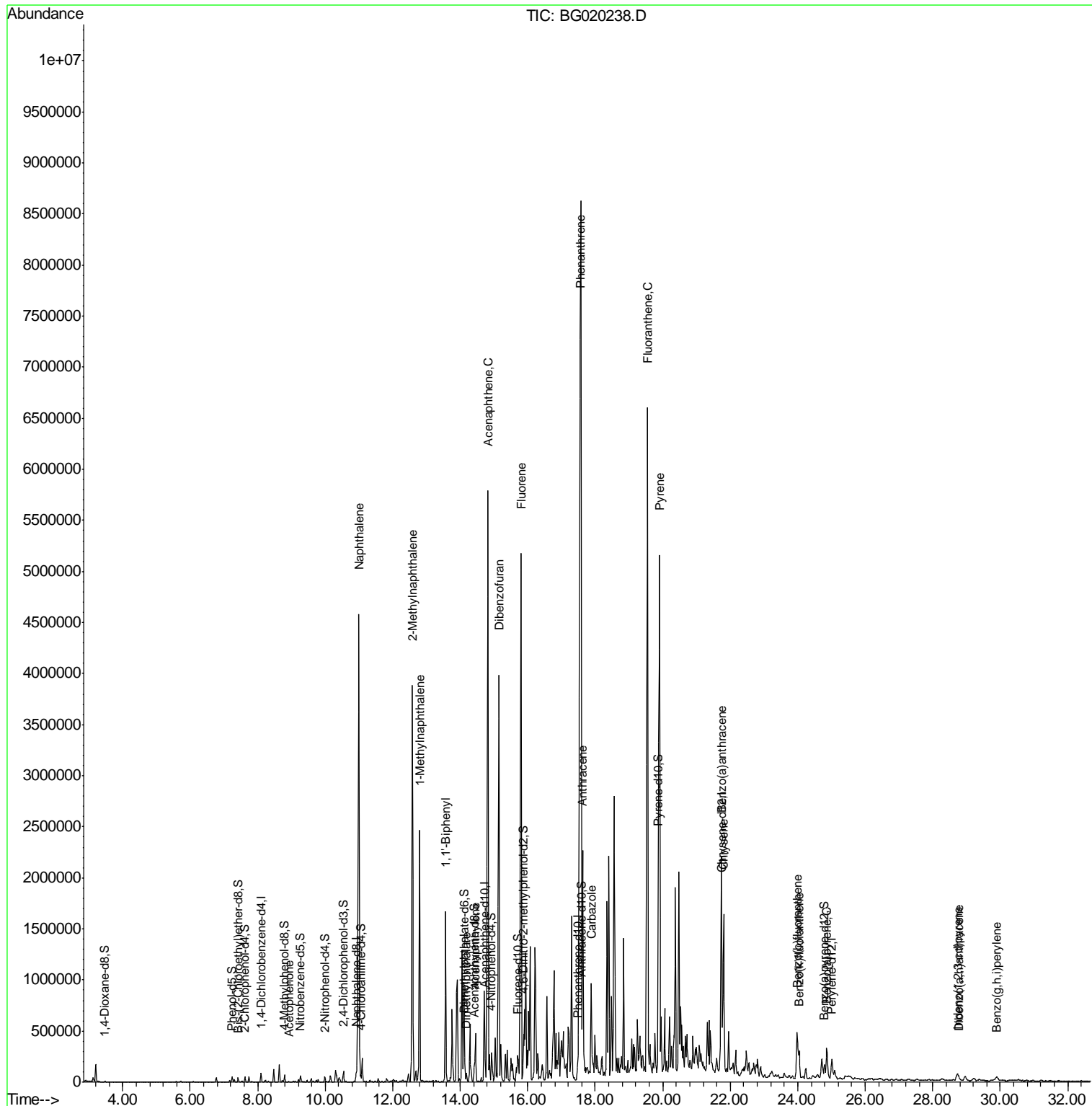
Internal Standards	R.T.	QIon	Response	Conc	Units	Dev(Min)
--------------------	------	------	----------	------	-------	----------

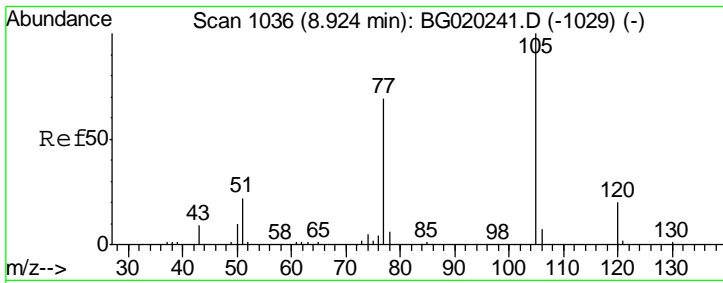
(#) = qualifier out of range (m) = manual integration (+) = signals summed

Data Path : Z:\HPCHEM1\BNA_G\DATA\BG121715\
 Data File : BG020238.D
 Acq On : 17 Dec 2015 2:08
 Operator : UM/SJ
 Sample : G4767-13
 Misc :
 ALS Vial : 24 Sample Multiplier: 1

Instrument :
 BNA_G
 ClientSampled :
 D9N35

Quant Time: Dec 17 05:52:47 2015
 Quant Method : Z:\HPCHEM1\BNA_G\METHODS\SOM02.2-EPA-BG121415.M
 Quant Title : SVOA CALIBRATION
 QLast Update : Thu Dec 17 03:53:00 2015
 Response via : Initial Calibration

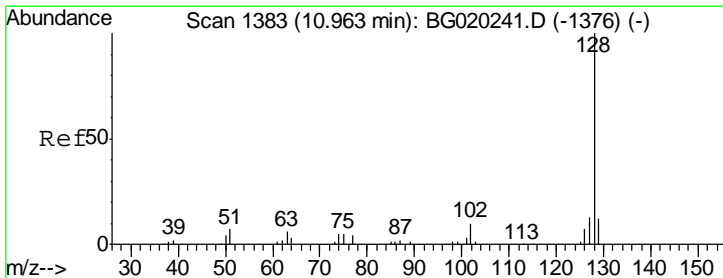
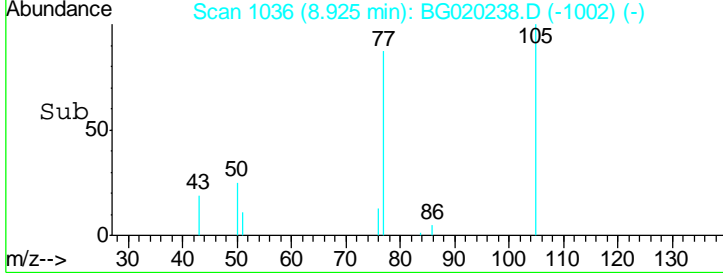
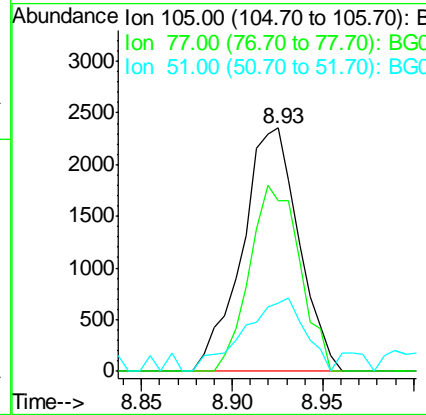
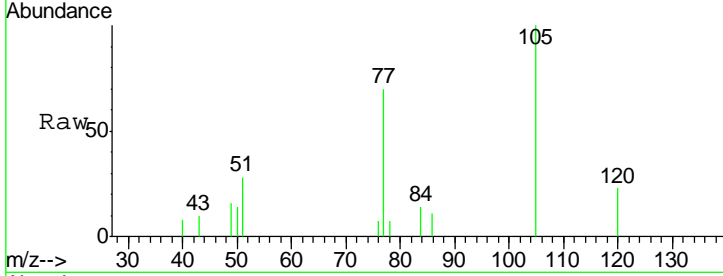




#14
 Acetophenone
 Concen: 1.73 ng/ul
 RT: 8.93 min Scan# 1036
 Delta R.T. 0.00 min
 Lab File: BG020238.D
 Acq: 17 Dec 2015 2:08

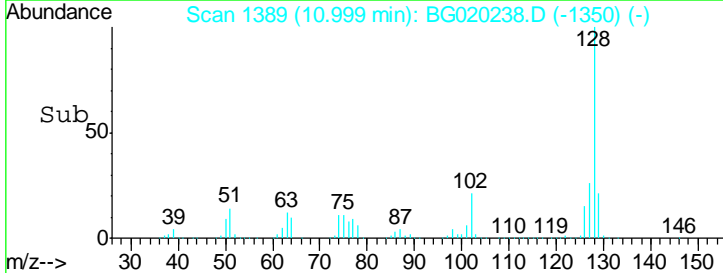
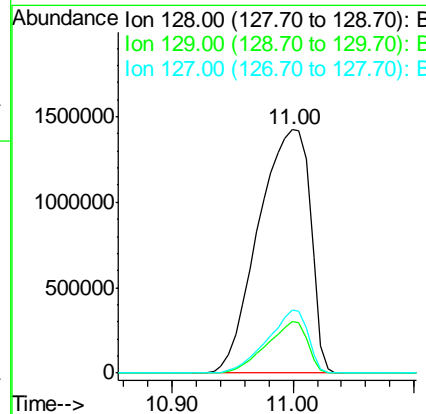
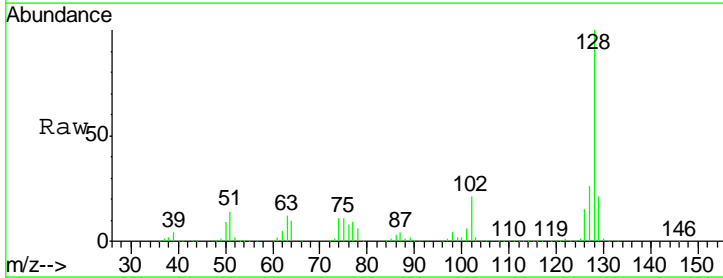
Instrument :
 BNA_G
 ClientSampled :
 D9N35

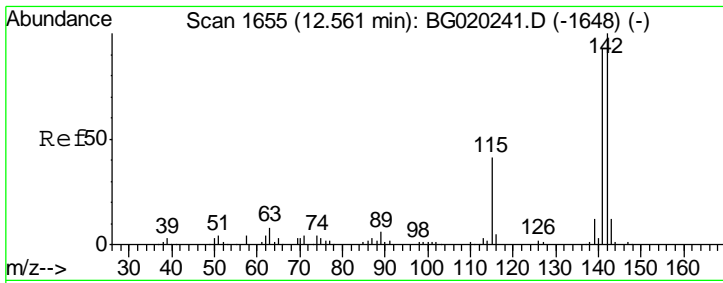
Tgt Ion	Resp	Lower	Upper
105	100		
77	70.3	65.2	97.8
51	27.9	22.6	33.8



#28
 Naphthalene
 Concen: 745.33 ng/ul
 RT: 11.00 min Scan# 1389
 Delta R.T. 0.03 min
 Lab File: BG020238.D
 Acq: 17 Dec 2015 2:08

Tgt Ion	Resp	Lower	Upper
128	100		
129	21.1	8.6	12.8#
127	25.9	10.1	15.1#

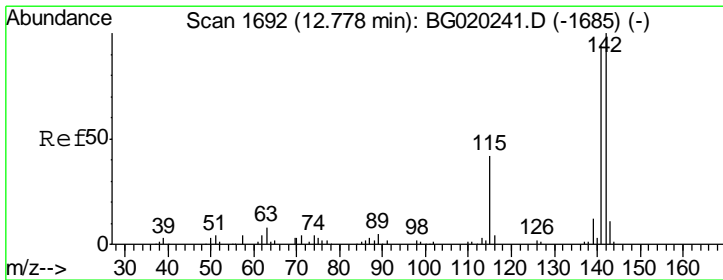
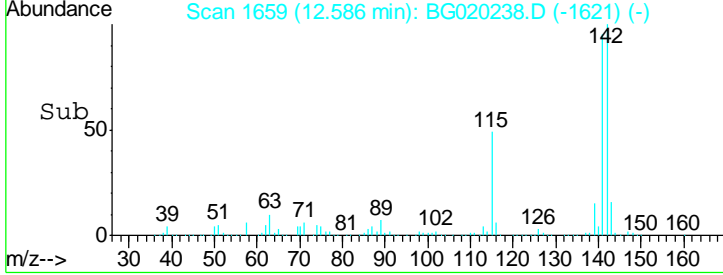
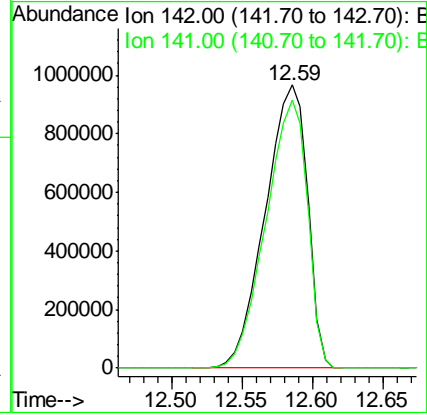
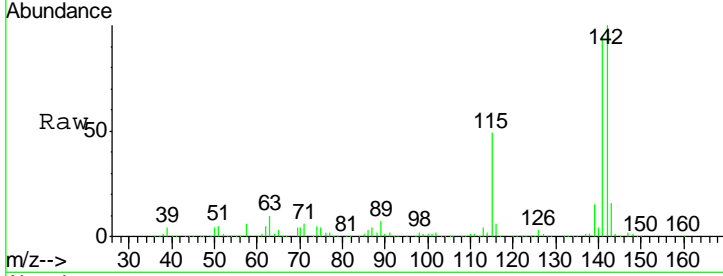




#34
 2-Methylnaphthalene
 Concen: 465.89 ng/ul
 RT: 12.59 min Scan# 1659
 Delta R.T. 0.02 min
 Lab File: BG020238.D
 Acq: 17 Dec 2015 2:08

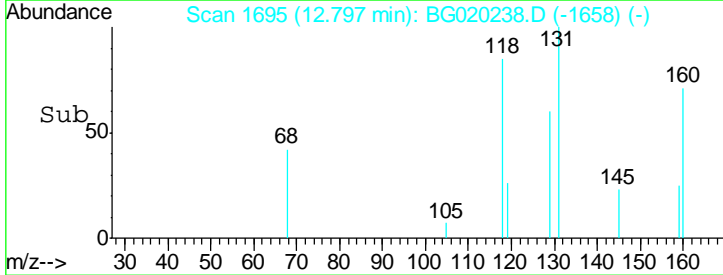
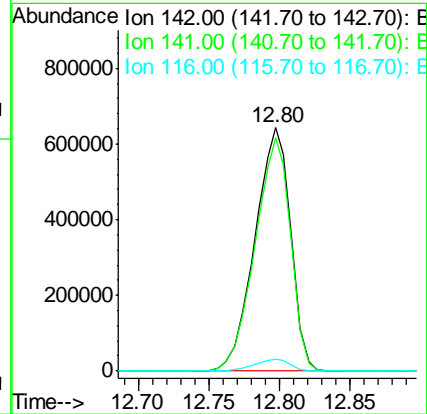
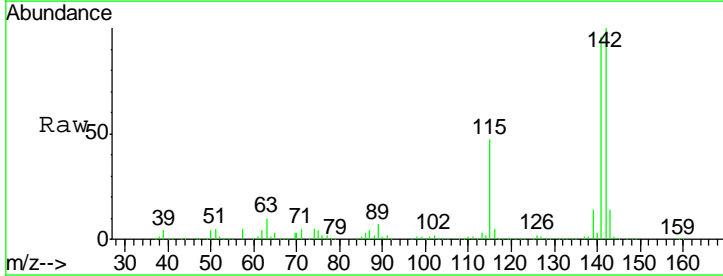
Instrument :
 BNA_G
 ClientSampled :
 D9N35

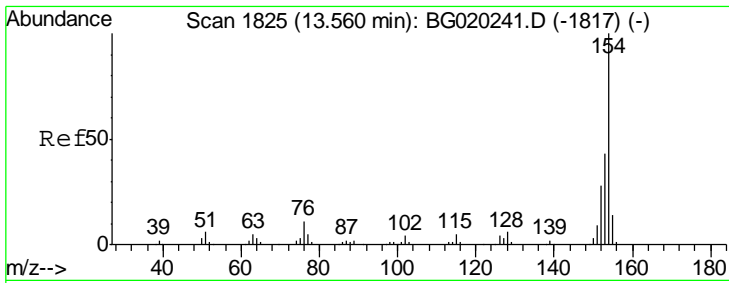
Tgt Ion:142 Resp: 2024863
 Ion Ratio Lower Upper
 142 100
 141 94.5 74.9 112.3



#35
 1-Methylnaphthalene
 Concen: 271.75 ng/ul
 RT: 12.80 min Scan# 1695
 Delta R.T. 0.02 min
 Lab File: BG020238.D
 Acq: 17 Dec 2015 2:08

Tgt Ion:142 Resp: 1135464
 Ion Ratio Lower Upper
 142 100
 141 95.7 73.0 109.6
 116 5.0 3.0 4.6#

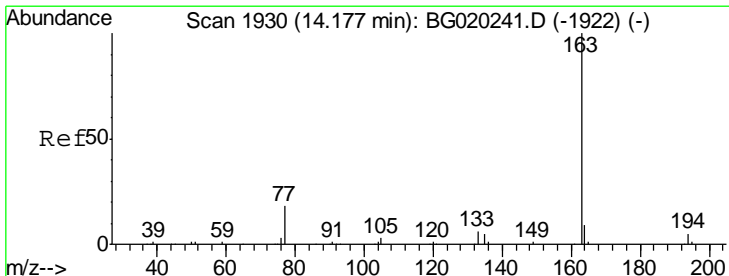
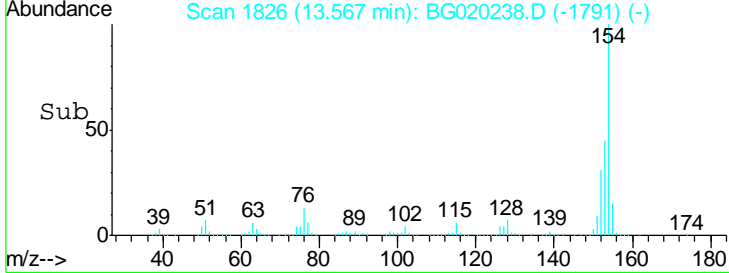
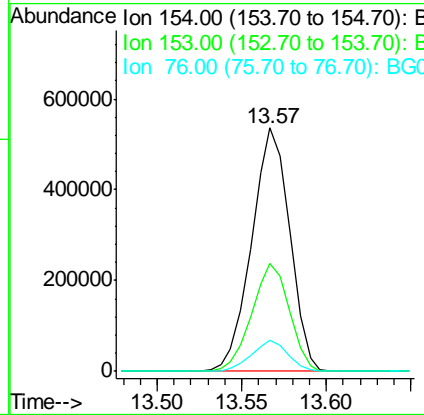
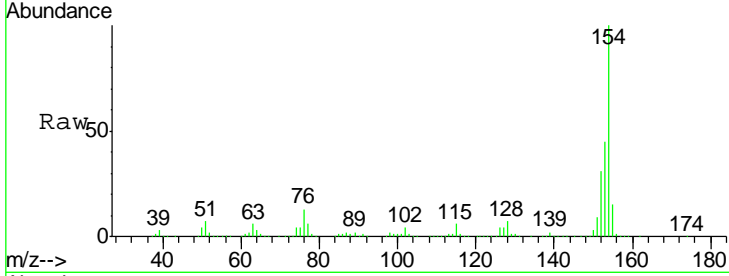




#41
 1,1'-Biphenyl
 Concen: 134.22 ng/ul
 RT: 13.57 min Scan# 1826
 Delta R.T. 0.01 min
 Lab File: BG020238.D
 Acq: 17 Dec 2015 2:08

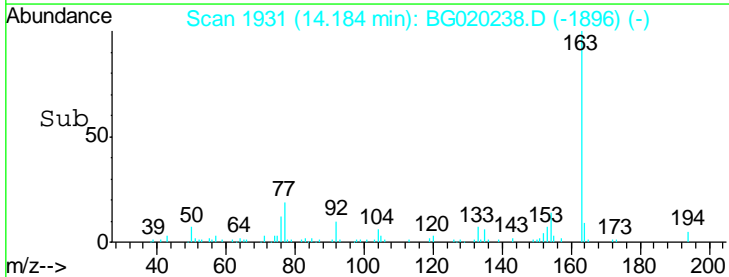
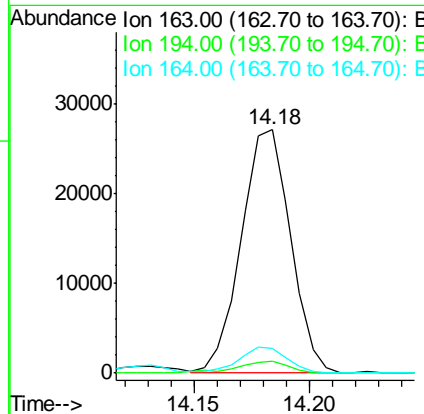
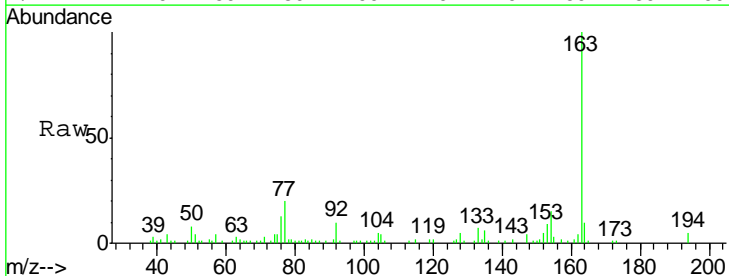
Instrument :
 BNA_G
 ClientSampled :
 D9N35

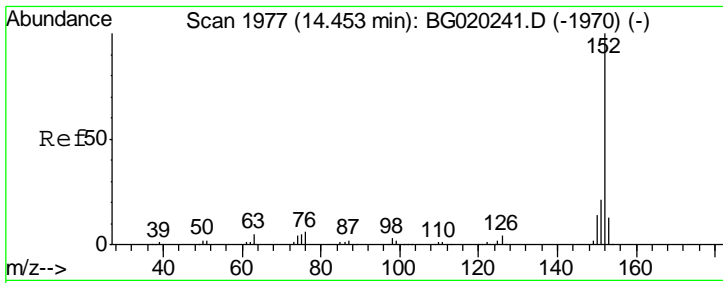
Tgt Ion	Resp	Lower	Upper
154	100		
153	44.5	35.5	53.3
76	12.5	10.4	15.6



#45
 Dimethylphthalate
 Concen: 5.91 ng/ul
 RT: 14.18 min Scan# 1931
 Delta R.T. 0.01 min
 Lab File: BG020238.D
 Acq: 17 Dec 2015 2:08

Tgt Ion	Resp	Lower	Upper
163	100		
194	4.9	3.5	5.3
164	10.2	7.7	11.5

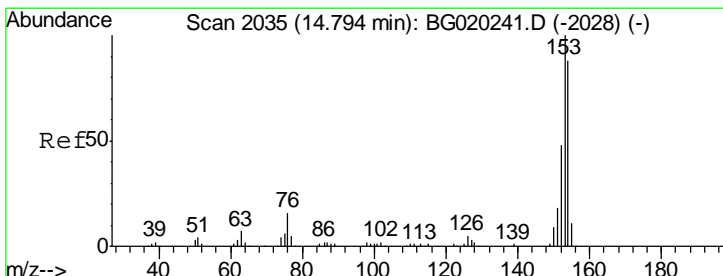
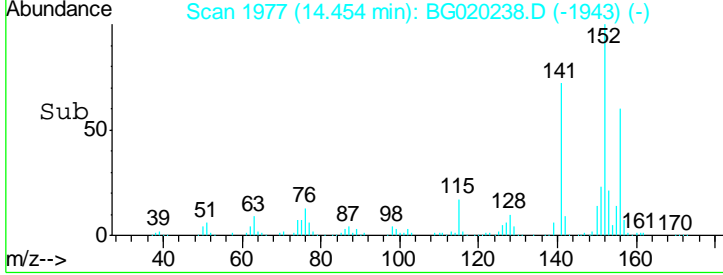
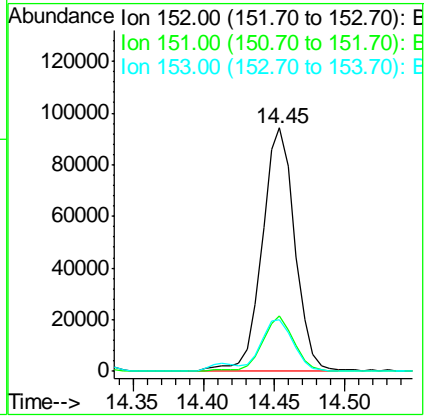
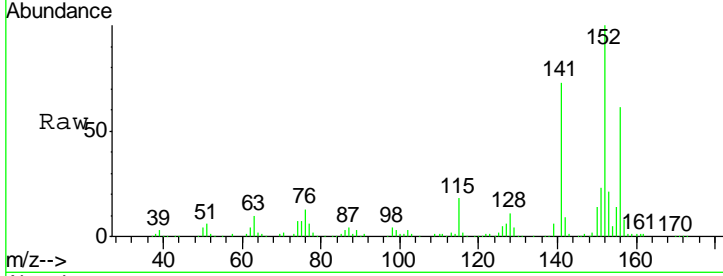




#48
 Acenaphthylene
 Concen: 18.53 ng/ul
 RT: 14.45 min Scan# 1977
 Delta R.T. 0.00 min
 Lab File: BG020238.D
 Acq: 17 Dec 2015 2:08

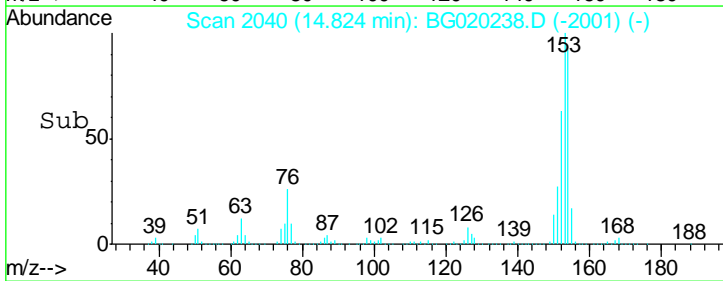
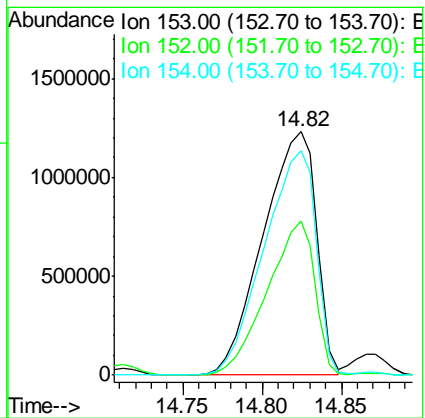
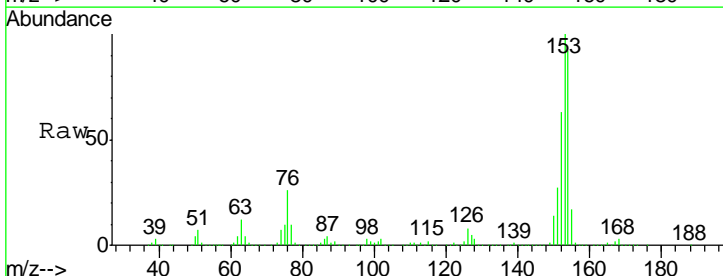
Instrument :
 BNA_G
 ClientSampled :
 D9N35

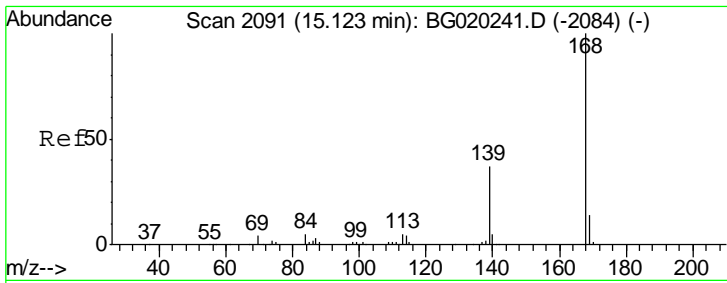
Tgt Ion	Resp	Lower	Upper
152	153185		
151	23.0	16.4	24.6
153	21.1	10.4	15.6#



#50
 Acenaphthene
 Concen: 517.21 ng/ul
 RT: 14.82 min Scan# 2040
 Delta R.T. 0.03 min
 Lab File: BG020238.D
 Acq: 17 Dec 2015 2:08

Tgt Ion	Resp	Lower	Upper
153	2876998		
152	63.3	37.6	56.4#
154	92.4	67.9	101.9

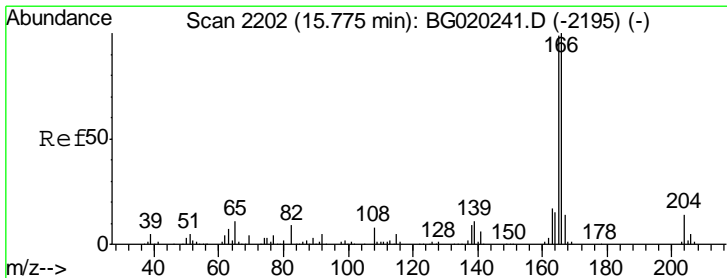
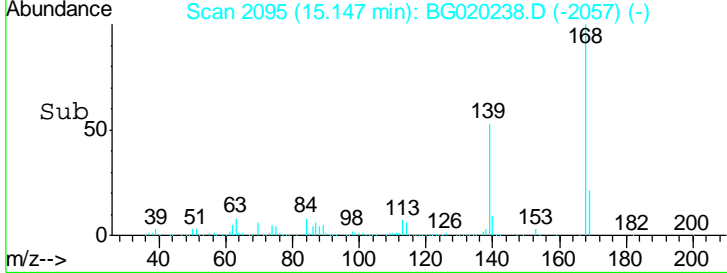
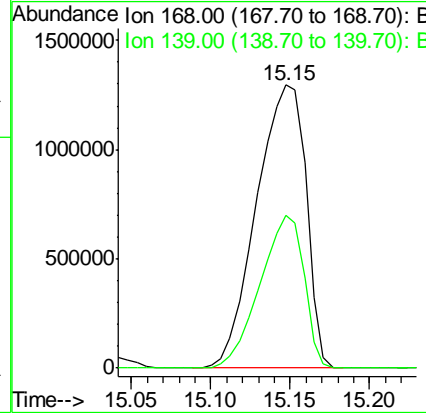
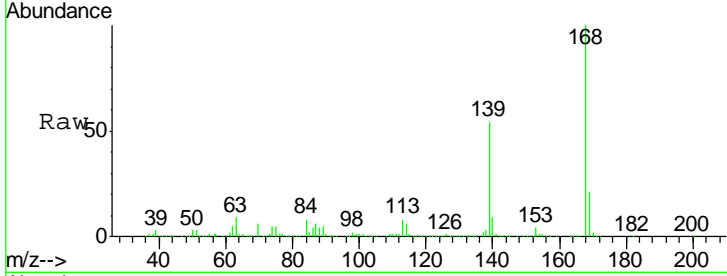




#54
 Dibenzofuran
 Concen: 339.28 ng/ul
 RT: 15.15 min Scan# 2095
 Delta R.T. 0.02 min
 Lab File: BG020238.D
 Acq: 17 Dec 2015 2:08

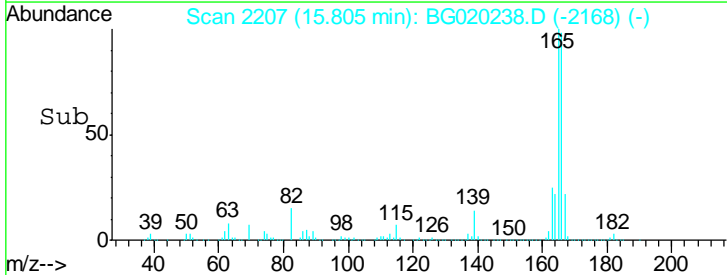
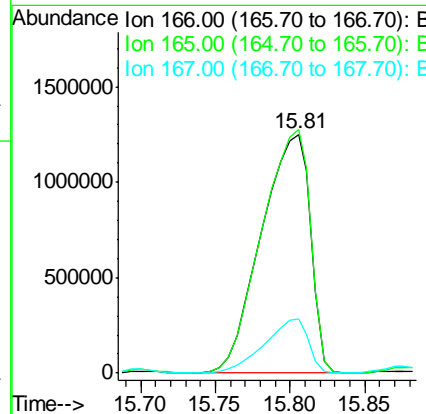
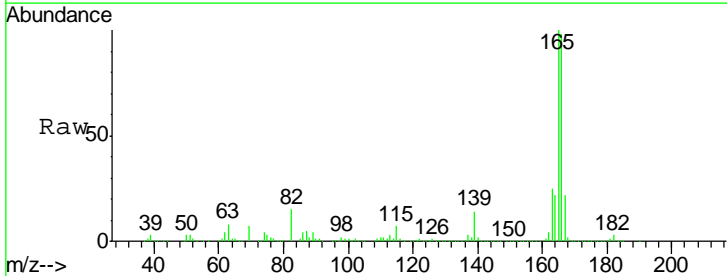
Instrument :
 BNA_G
 ClientSampled :
 D9N35

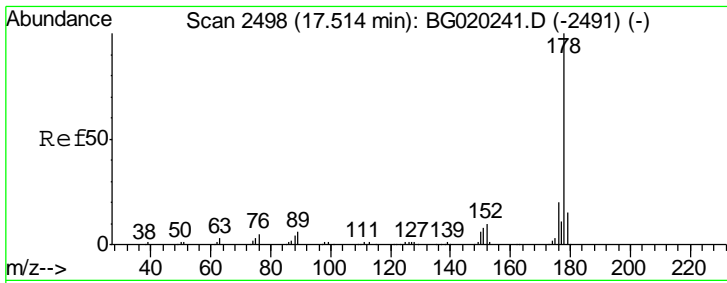
Tgt Ion:168 Resp: 2807446
 Ion Ratio Lower Upper
 168 100
 139 53.8 30.5 45.7#



#59
 Fluorene
 Concen: 430.03 ng/ul
 RT: 15.81 min Scan# 2207
 Delta R.T. 0.03 min
 Lab File: BG020238.D
 Acq: 17 Dec 2015 2:08

Tgt Ion:166 Resp: 2857491
 Ion Ratio Lower Upper
 166 100
 165 101.8 81.4 122.0
 167 22.6 11.2 16.8#

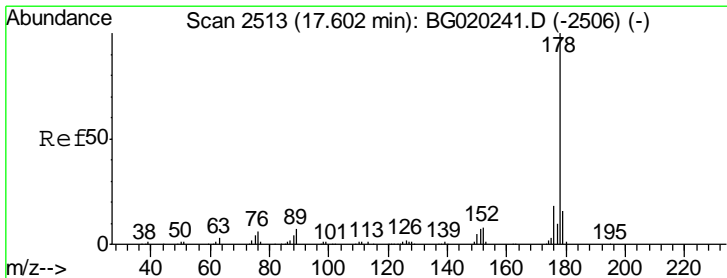
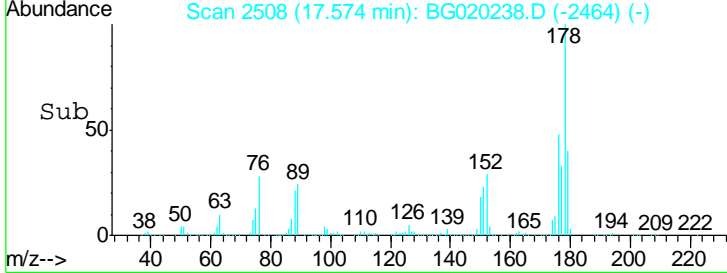
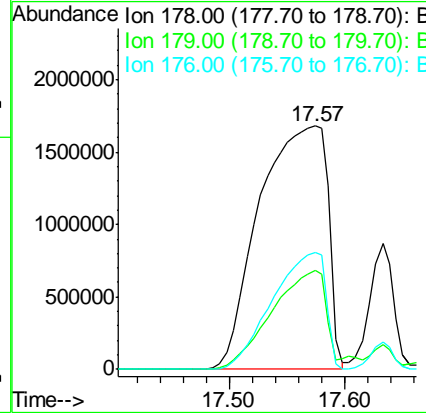
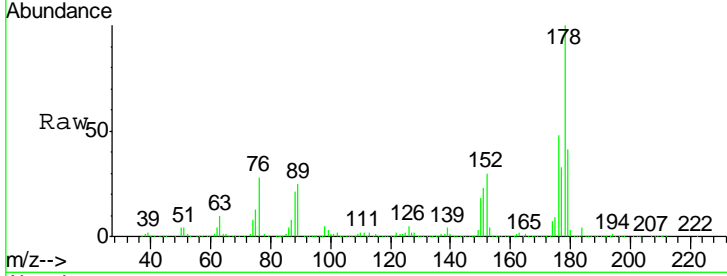




#70
 Phenanthrene
 Concen: 768.17 ng/ul
 RT: 17.57 min Scan# 2508
 Delta R.T. 0.06 min
 Lab File: BG020238.D
 Acq: 17 Dec 2015 2:08

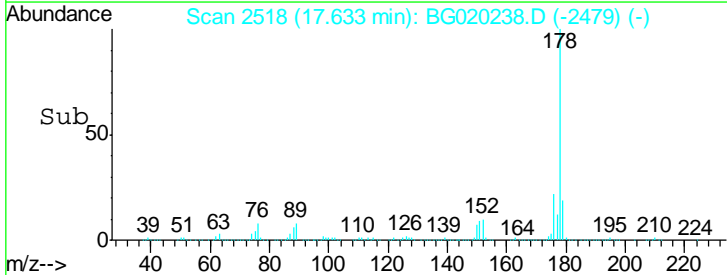
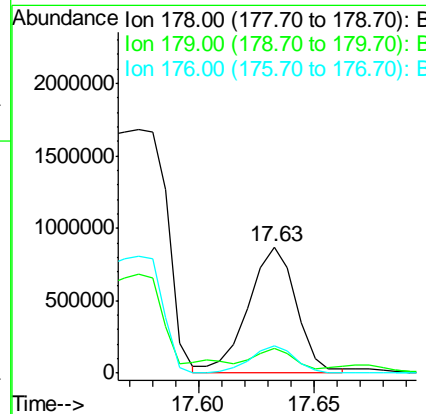
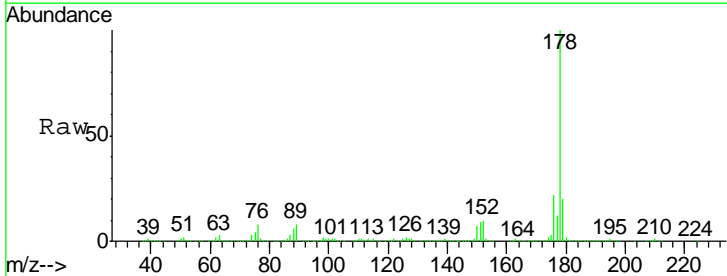
Instrument :
 BNA_G
 ClientSampled :
 D9N35

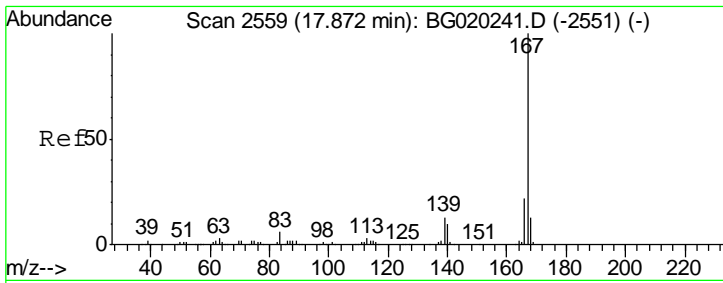
Tgt Ion	Resp	Lower	Upper
178	100		
179	40.5	12.9	19.3#
176	48.2	15.3	22.9#



#72
 Anthracene
 Concen: 138.52 ng/ul
 RT: 17.63 min Scan# 2518
 Delta R.T. 0.03 min
 Lab File: BG020238.D
 Acq: 17 Dec 2015 2:08

Tgt Ion	Resp	Lower	Upper
178	100		
179	19.5	12.3	18.5#
176	21.9	14.3	21.5#



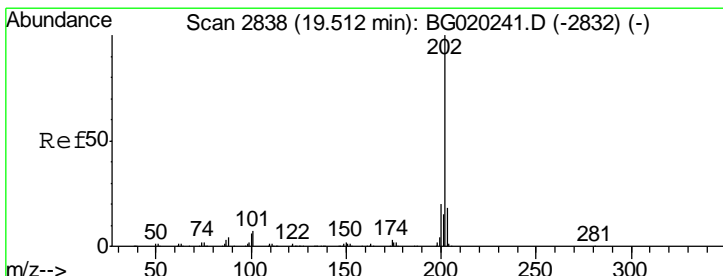
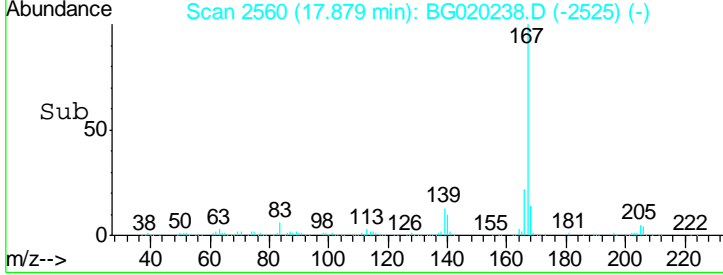
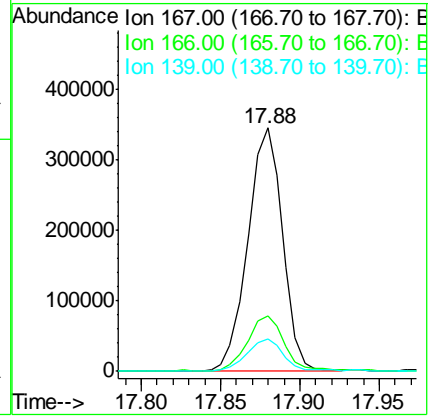
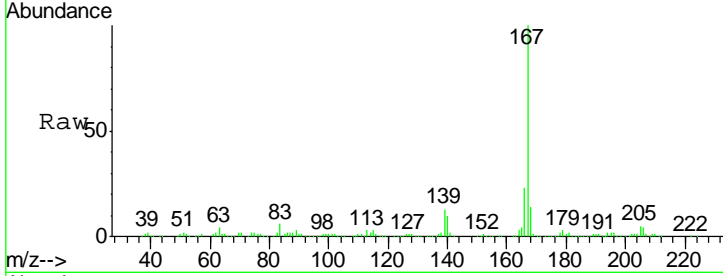


#75
 Carbazole
 Concen: 68.57 ng/ul
 RT: 17.88 min Scan# 2560
 Delta R.T. 0.01 min
 Lab File: BG020238.D
 Acq: 17 Dec 2015 2:08

Instrument :
 BNA_G
 ClientSampled :
 D9N35

Tgt Ion:167 Resp: 522882

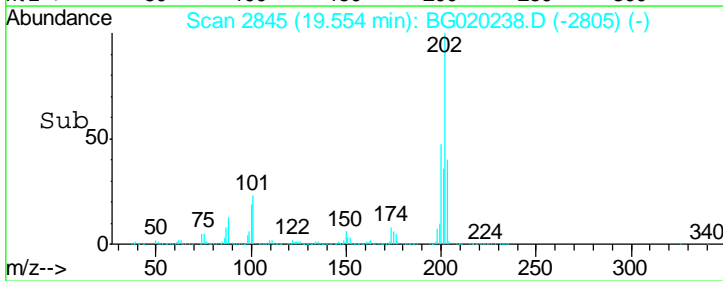
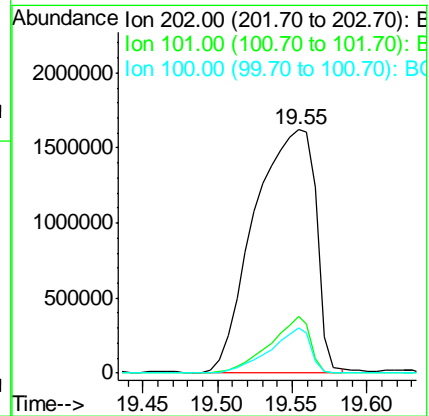
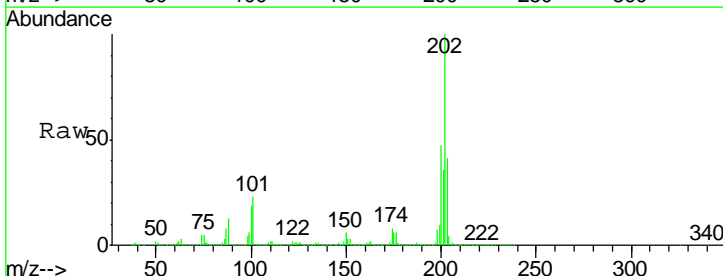
Ion	Ratio	Lower	Upper
167	100		
166	22.8	17.0	25.6
139	13.4	10.1	15.1

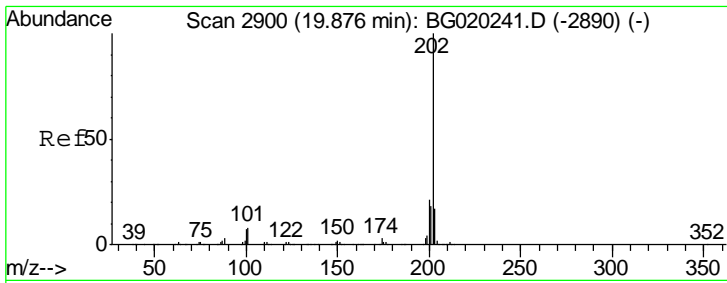


#77
 Fluoranthene
 Concen: 444.49 ng/ul
 RT: 19.55 min Scan# 2845
 Delta R.T. 0.04 min
 Lab File: BG020238.D
 Acq: 17 Dec 2015 2:08

Tgt Ion:202 Resp: 4648274

Ion	Ratio	Lower	Upper
202	100		
101	23.1	6.2	9.4#
100	18.8	5.1	7.7#



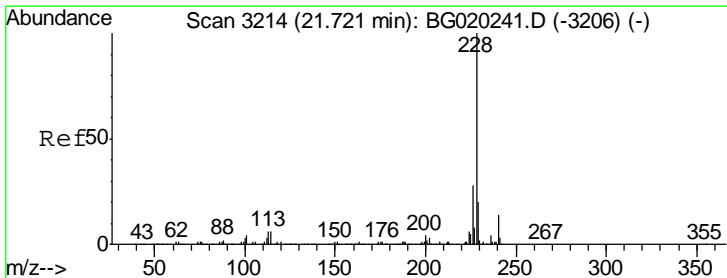
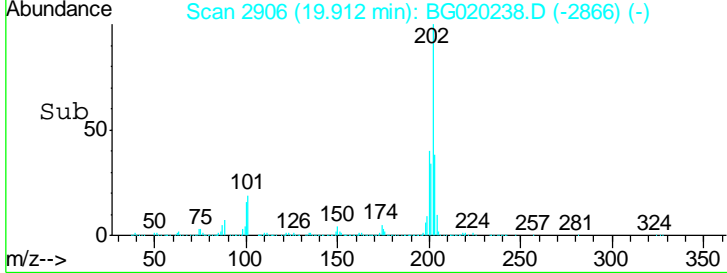
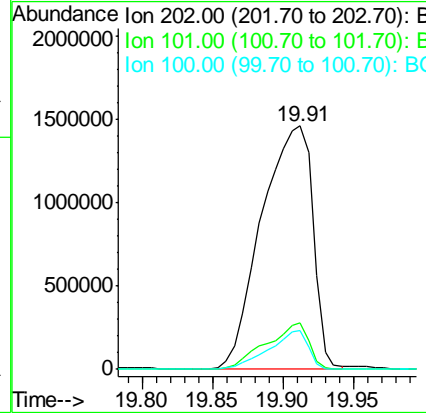
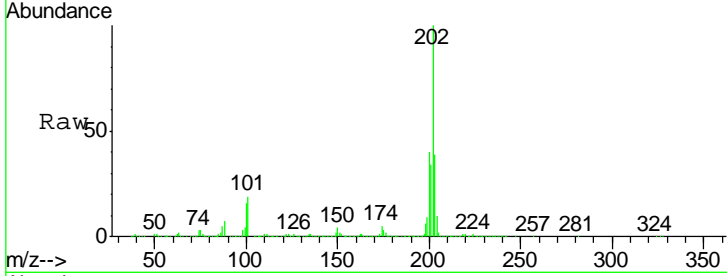


#80
 Pyrene
 Concen: 309.78 ng/ul
 RT: 19.91 min Scan# 2906
 Delta R.T. 0.04 min
 Lab File: BG020238.D
 Acq: 17 Dec 2015 2:08

Instrument : BNA_G
 ClientSampled : D9N35

Tgt Ion: 202 Resp: 3692123

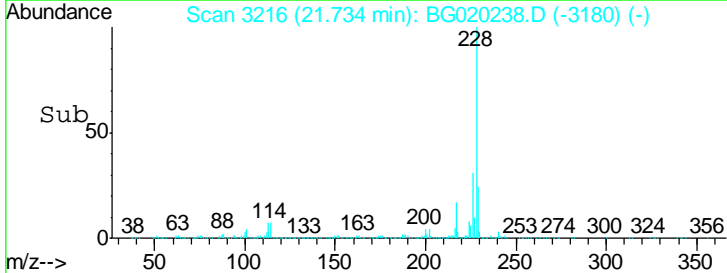
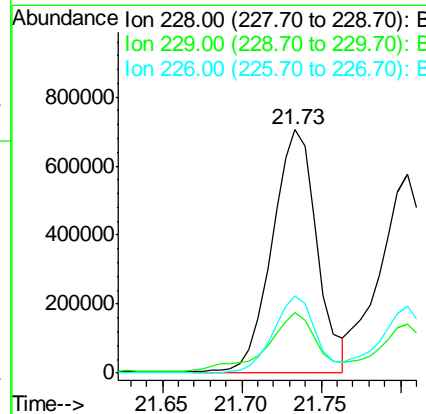
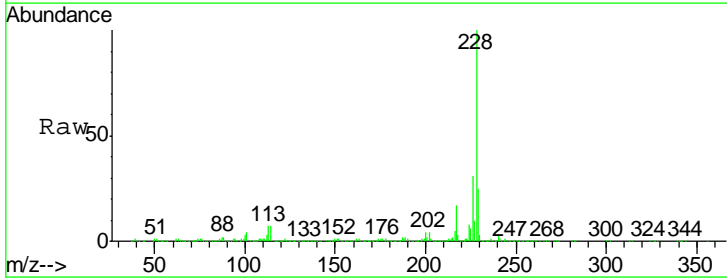
Ion	Ratio	Lower	Upper
202	100		
101	18.9	7.0	10.4#
100	16.0	6.4	9.6#

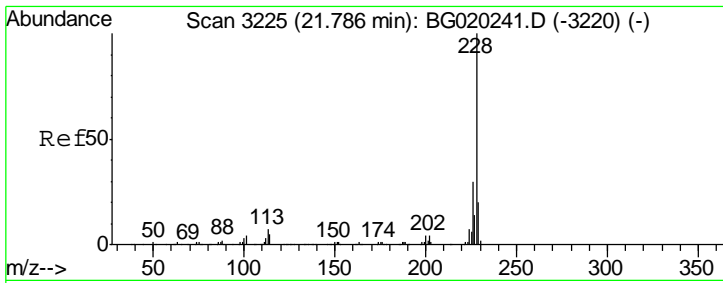


#83
 Benzo(a)anthracene
 Concen: 119.86 ng/ul
 RT: 21.73 min Scan# 3216
 Delta R.T. 0.01 min
 Lab File: BG020238.D
 Acq: 17 Dec 2015 2:08

Tgt Ion: 228 Resp: 1377210

Ion	Ratio	Lower	Upper
228	100		
229	24.6	15.8	23.8#
226	31.5	21.8	32.6

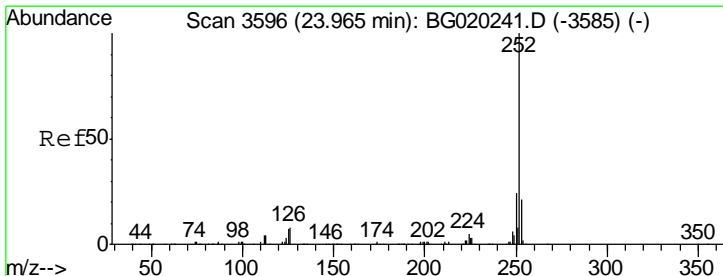
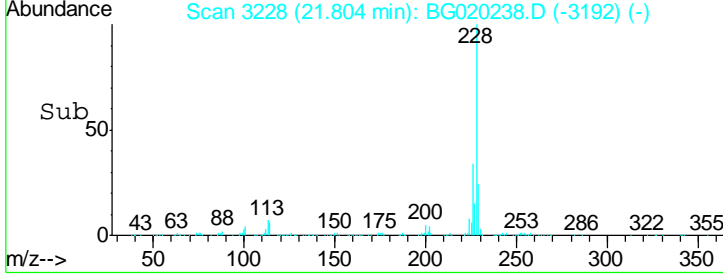
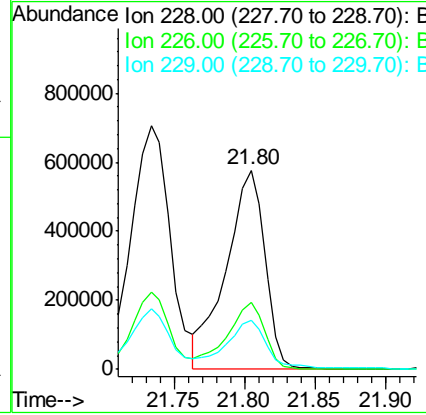
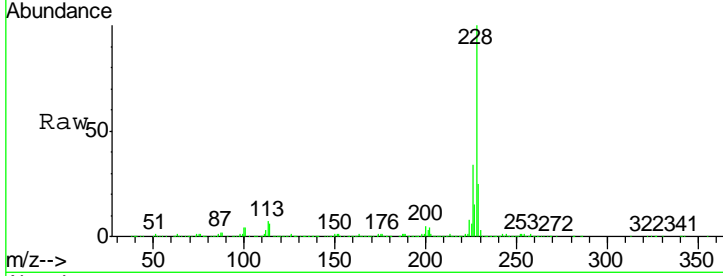




#85
 Chrysene
 Concen: 101.47 ng/ul
 RT: 21.80 min Scan# 3228
 Delta R.T. 0.01 min
 Lab File: BG020238.D
 Acq: 17 Dec 2015 2:08

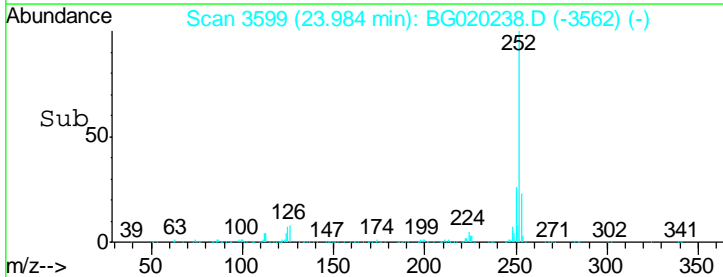
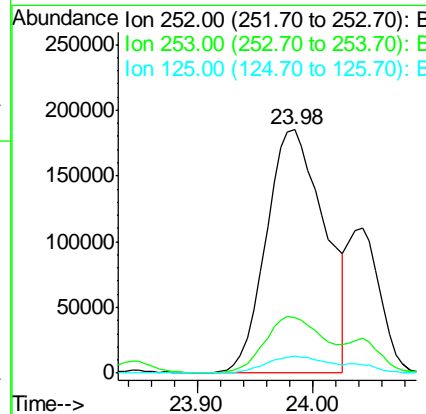
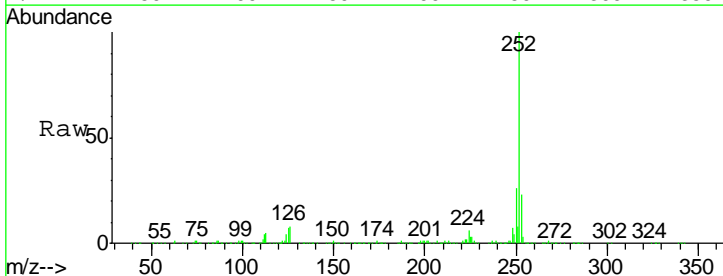
Instrument :
 BNA_G
 ClientSampled :
 D9N35

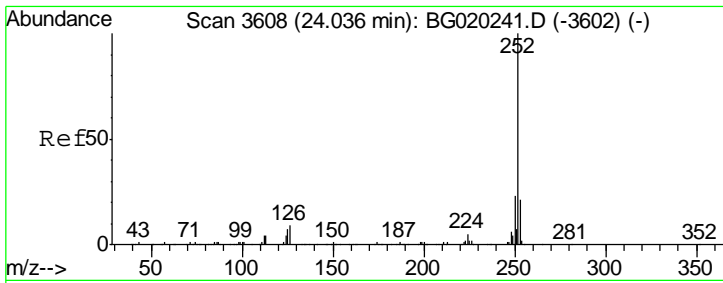
Tgt Ion	Resp	Lower	Upper
228	1098090		
226	33.6	23.9	35.9
229	24.9	15.6	23.4#



#88
 Benzo(b)fluoranthene
 Concen: 56.24 ng/ul
 RT: 23.98 min Scan# 3599
 Delta R.T. 0.02 min
 Lab File: BG020238.D
 Acq: 17 Dec 2015 2:08

Tgt Ion	Resp	Lower	Upper
252	648044		
253	22.8	16.7	25.1
125	7.0	6.2	9.2

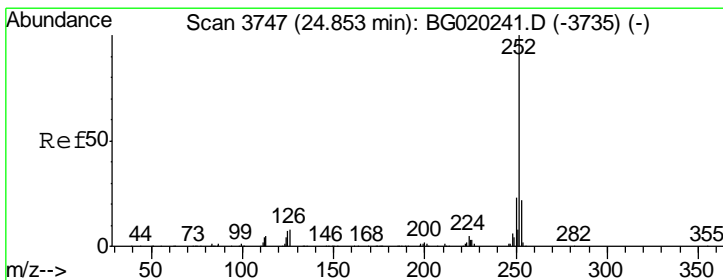
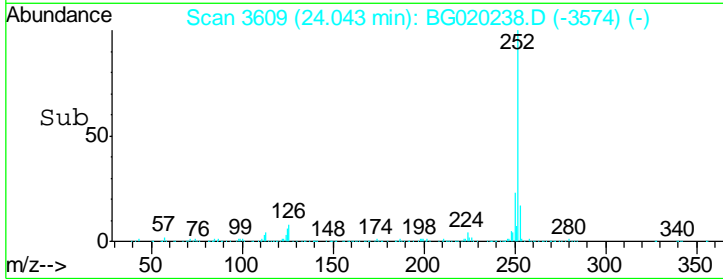
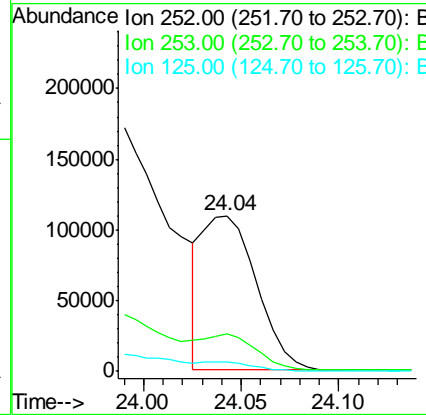
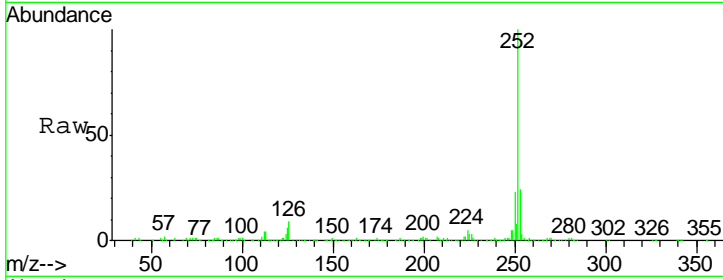




#89
 Benzo(k)fluoranthene
 Concen: 18.89 ng/ul
 RT: 24.04 min Scan# 3609
 Delta R.T. 0.01 min
 Lab File: BG020238.D
 Acq: 17 Dec 2015 2:08

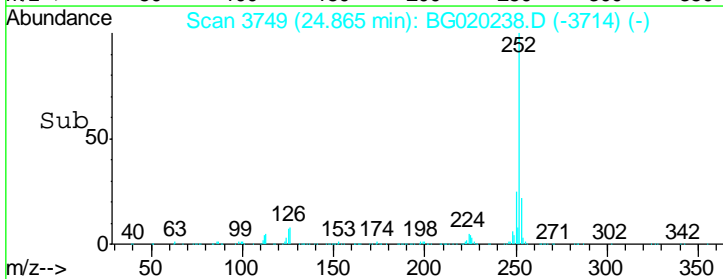
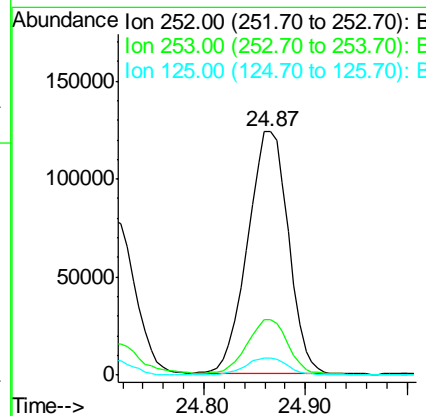
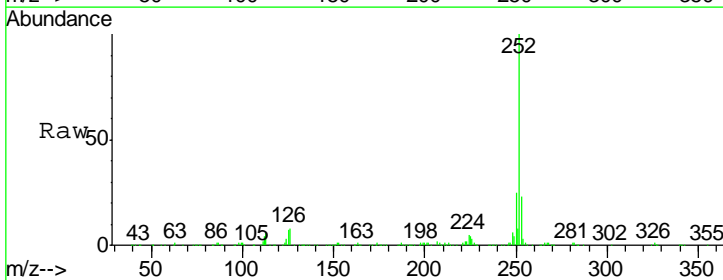
Instrument :
 BNA_G
 ClientSampled :
 D9N35

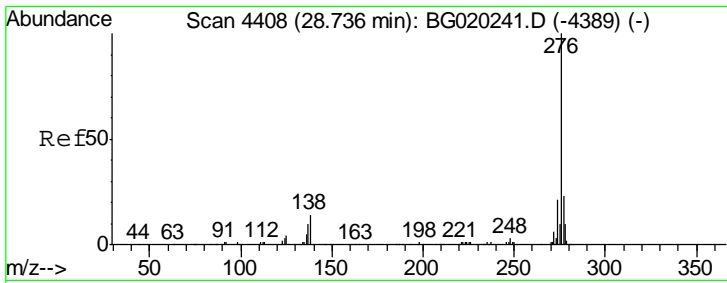
Tgt Ion	Resp	Lower	Upper
252	100		
253	24.5	17.9	26.9
125	5.9	5.8	8.6



#91
 Benzo(a)pyrene
 Concen: 31.76 ng/ul
 RT: 24.87 min Scan# 3749
 Delta R.T. 0.01 min
 Lab File: BG020238.D
 Acq: 17 Dec 2015 2:08

Tgt Ion	Resp	Lower	Upper
252	100		
253	22.9	17.0	25.4
125	7.1	6.2	9.4

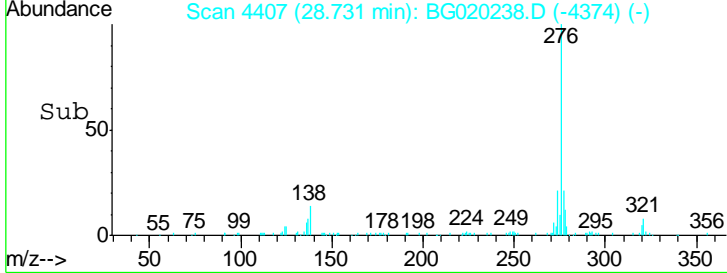
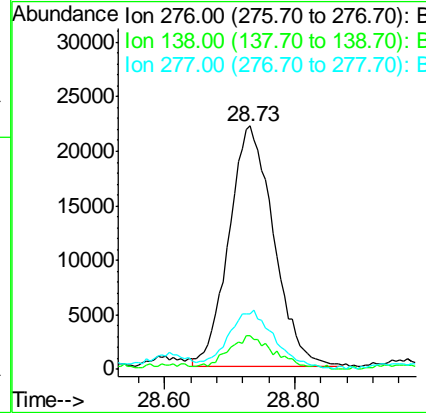
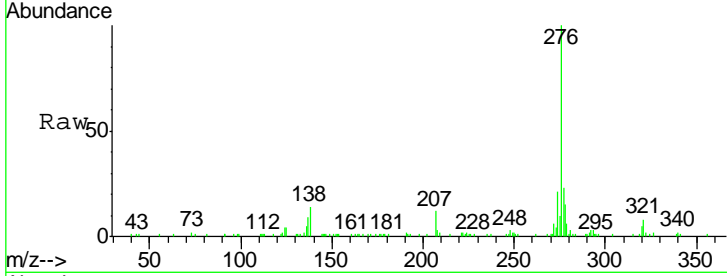




#92
 Indeno(1,2,3-cd)pyrene
 Concen: 8.06 ng/ul
 RT: 28.73 min Scan# 4407
 Delta R.T. -0.00 min
 Lab File: BG020238.D
 Acq: 17 Dec 2015 2:08

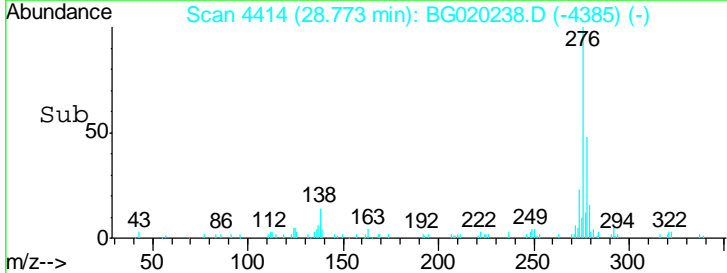
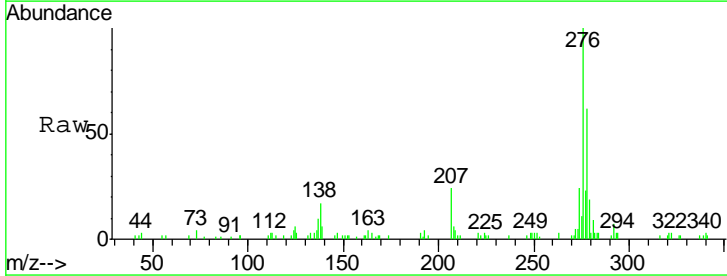
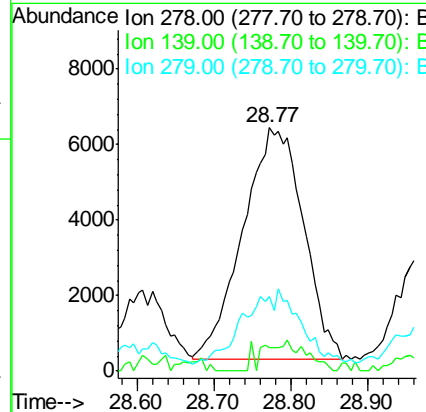
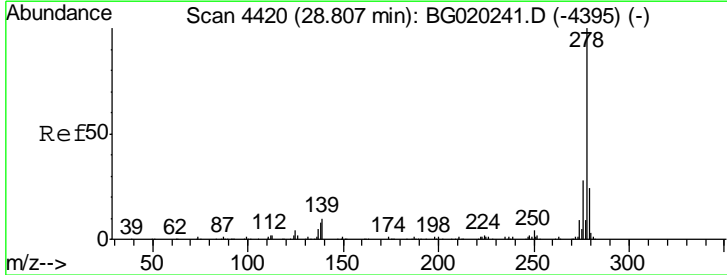
Instrument :
 BNA_G
 ClientSampled :
 D9N35

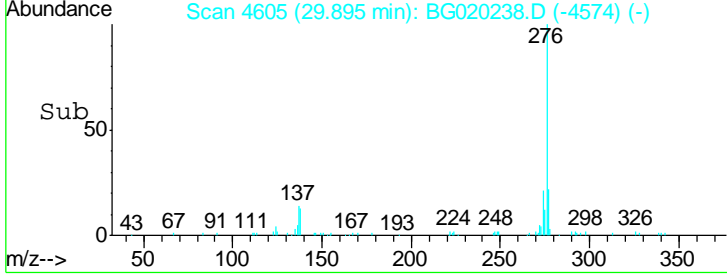
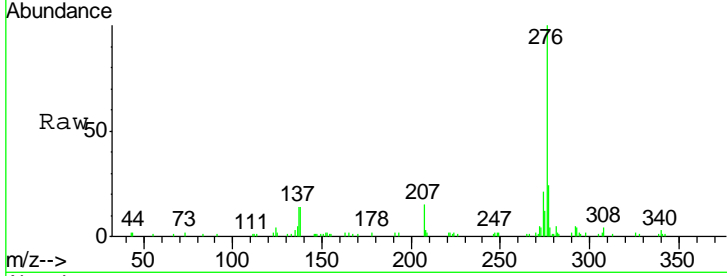
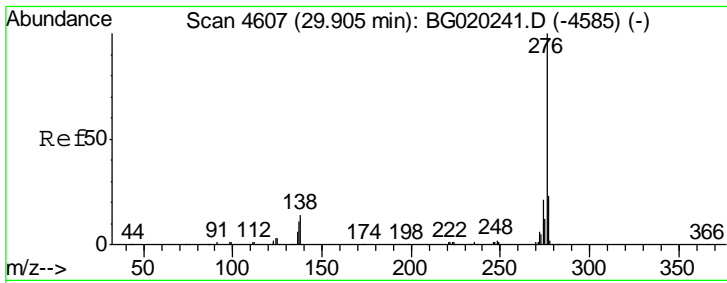
Tgt Ion	Resp	Lower	Upper
276	104828		
138	14.1	11.4	17.0
277	23.0	17.4	26.0



#93
 Dibenzo(a,h)anthracene
 Concen: 3.10 ng/ul
 RT: 28.77 min Scan# 4414
 Delta R.T. -0.03 min
 Lab File: BG020238.D
 Acq: 17 Dec 2015 2:08

Tgt Ion	Resp	Lower	Upper
278	33431		
139	9.9	9.4	14.2
279	30.5	19.4	29.0#





#94
 Benzo(g,h,i)perylene
 Concen: 6.62 ng/ul
 RT: 29.89 min Scan# 4605
 Delta R.T. -0.02 min
 Lab File: BG020238.D
 Acq: 17 Dec 2015 2:08

Instrument :
 BNA_G
 ClientSampled :
 D9N35

Tgt Ion	Resp	Lower	Upper
276	70631		
138	14.2	10.8	16.2
277	23.8	19.9	29.9

