

Data Path : Z:\HPCHEM1\BNA_G\DATA\BG121715\
 Data File : BG020237.D
 Acq On : 17 Dec 2015 1:28
 Operator : UM/SJ
 Sample : G4767-12
 Misc :
 ALS Vial : 23 Sample Multiplier: 1

Instrument :
 BNA_G
 ClientSampleId :
 D9N34

Integration Parameters: LSCINT.P

Integrator: RTE
 Smoothing : OFF
 Sampling : 1
 Start Thrs: 0.2
 Stop Thrs : 0

Filtering: 5
 Min Area: 0.1 % of largest Peak
 Max Peaks: 100
 Peak Location: TOP

If leading or trailing edge < 100 prefer < Baseline drop else tangent >
 Peak separation: 5

Method : Z:\HPCHEM1\BNA_G\METHODS\SOM02.2-EPA-BG121415.M
 Title : SVOA CALIBRATION

Signal : TIC

peak #	R.T. min	first scan	max scan	last scan	PK TY	peak height	corr. area	corr. % max.	% of total
1	3.198	57	61	71	rVB	186255	261757	1.25%	0.169%
2	8.639	981	987	996	rVB	162488	268287	1.28%	0.173%
3	10.308	1264	1271	1283	rBV3	91481	252562	1.20%	0.163%
4	10.537	1303	1310	1319	rVB4	111146	228841	1.09%	0.147%
5	11.001	1377	1389	1394	rVV	4295742	10512360	50.09%	6.773%
6	11.095	1400	1405	1414	rVB	196506	347944	1.66%	0.224%
7	12.581	1644	1658	1668	rBV	3449442	6765460	32.24%	4.359%
8	12.793	1682	1694	1701	rVB	1993066	3488751	16.62%	2.248%
9	13.568	1815	1826	1832	rBV	1263331	2008607	9.57%	1.294%
10	13.762	1852	1859	1870	rVB	526500	1003296	4.78%	0.646%
11	13.897	1870	1882	1883	rBV	727625	1225996	5.84%	0.790%
12	14.056	1900	1909	1913	rVV	968718	1881263	8.96%	1.212%
13	14.109	1913	1918	1926	rVV2	704607	1367858	6.52%	0.881%
14	14.285	1942	1948	1952	rBV	415266	697019	3.32%	0.449%
15	14.426	1965	1972	1973	rBV2	197556	312278	1.49%	0.201%
16	14.450	1973	1976	1985	rVB	381265	574145	2.74%	0.370%
17	14.708	2011	2020	2029	rBV2	641415	1279283	6.10%	0.824%
18	14.820	2029	2039	2043	rVV	4867834	9796666	46.68%	6.312%
19	14.867	2043	2047	2051	rVV	209926	327326	1.56%	0.211%
20	14.932	2051	2058	2068	rVB2	195705	500065	2.38%	0.322%
21	15.037	2068	2076	2081	rBV2	323183	545036	2.60%	0.351%
22	15.143	2086	2094	2099	rVV	3321591	6395172	30.47%	4.120%
23	15.196	2099	2103	2112	rVB	254643	398091	1.90%	0.256%
24	15.337	2118	2127	2132	rBV2	189147	363215	1.73%	0.234%
25	15.390	2132	2136	2147	rVB	209636	340621	1.62%	0.219%
26	15.507	2147	2156	2160	rBV	153253	340628	1.62%	0.219%
27	15.548	2160	2163	2168	rVV3	122017	211892	1.01%	0.137%
28	15.695	2184	2188	2189	rVV3	170375	236113	1.13%	0.152%
29	15.719	2189	2192	2196	rVV2	221060	375117	1.79%	0.242%
30	15.795	2196	2205	2212	rVV	4282235	8418024	40.11%	5.424%
31	15.872	2212	2218	2220	rVV	329630	533073	2.54%	0.343%
32	15.901	2220	2223	2226	rVV	501628	803095	3.83%	0.517%
33	15.942	2226	2230	2234	rVV2	919250	1466684	6.99%	0.945%
34	15.989	2234	2238	2241	rVV2	211347	368826	1.76%	0.238%

Data Path : Z:\HPCHEM1\BNA_G\DATA\BG121715\
 Data File : BG020237.D
 Acq On : 17 Dec 2015 1:28
 Operator : UM/SJ
 Sample : G4767-12
 Misc :
 ALS Vial : 23 Sample Multiplier: 1

Instrument :
 BNA_G
 ClientSampleId :
 D9N34

Integration Parameters: LSCINT.P

Integrator: RTE
 Smoothing : OFF
 Sampling : 1
 Start Thrs: 0.2
 Stop Thrs : 0

Filtering: 5
 Min Area: 0.1 % of largest Peak
 Max Peaks: 100
 Peak Location: TOP

If leading or trailing edge < 100 prefer < Baseline drop else tangent >
 Peak separation: 5

Method : Z:\HPCHEM1\BNA_G\METHODS\SOM02.2-EPA-BG121415.M
 Title : SVOA CALIBRATION

35	16.024	2241	2244	2247	rVV	467289	699727	3.33%	0.451%
36	16.065	2247	2251	2259	rVB	922375	1452469	6.92%	0.936%
37	16.218	2266	2277	2284	rBV	931219	2064798	9.84%	1.330%
38	16.306	2288	2292	2297	rVB	179395	267956	1.28%	0.173%
39	16.565	2326	2336	2342	rBV	623822	1002039	4.77%	0.646%
40	16.776	2360	2372	2376	rBV2	728117	1682035	8.01%	1.084%
41	16.823	2376	2380	2385	rVB2	251652	348441	1.66%	0.224%
42	16.923	2391	2397	2402	rVB3	307338	552197	2.63%	0.356%
43	16.976	2402	2406	2407	rBV	168922	193780	0.92%	0.125%
44	17.000	2407	2410	2413	rVV	165234	218033	1.04%	0.140%
45	17.041	2413	2417	2421	rVB2	223052	294479	1.40%	0.190%
46	17.123	2428	2431	2438	rVB3	105831	208336	0.99%	0.134%
47	17.199	2438	2444	2446	rBV	332339	544557	2.59%	0.351%
48	17.293	2455	2460	2470	rVB	1163636	1879921	8.96%	1.211%
49	17.564	2479	2506	2509	rBV	7506899	20986581	100.00%	13.521%
50	17.593	2509	2511	2513	rVV	376427	438017	2.09%	0.282%
51	17.622	2513	2516	2522	rVB	1258870	1678500	8.00%	1.081%
52	17.875	2553	2559	2568	rBV	637406	1171455	5.58%	0.755%
53	17.987	2574	2578	2585	rBV2	255795	421731	2.01%	0.272%
54	18.057	2585	2590	2598	rVB3	117656	253342	1.21%	0.163%
55	18.192	2608	2613	2622	rVB	133698	297657	1.42%	0.192%
56	18.351	2634	2640	2644	rVV	1212293	1883598	8.98%	1.214%
57	18.398	2644	2648	2654	rVB	1547149	2372760	11.31%	1.529%
58	18.480	2654	2662	2667	rBV	528681	937677	4.47%	0.604%
59	18.557	2667	2675	2684	rVV3	1928473	4261748	20.31%	2.746%
60	18.774	2709	2712	2718	rVV4	108491	203969	0.97%	0.131%
61	18.839	2718	2723	2728	rVV	912157	1282450	6.11%	0.826%
62	19.080	2760	2764	2768	rVB2	206891	268763	1.28%	0.173%
63	19.132	2768	2773	2776	rBV	151355	195324	0.93%	0.126%
64	19.250	2787	2793	2798	rBV2	329480	626890	2.99%	0.404%
65	19.320	2800	2805	2813	rVB2	222805	503917	2.40%	0.325%
66	19.544	2833	2843	2847	rBV	5287430	10877531	51.83%	7.008%
67	19.614	2852	2855	2859	rVB	173623	230029	1.10%	0.148%
68	19.767	2875	2881	2885	rVV	238104	389215	1.85%	0.251%
69	19.902	2890	2904	2909	rBV3	3989323	10325189	49.20%	6.652%
70	19.949	2909	2912	2918	rVB	361212	518595	2.47%	0.334%
71	20.055	2919	2930	2936	rBV	404417	650525	3.10%	0.419%

Data Path : Z:\HPCHEM1\BNA_G\DATA\BG121715\
 Data File : BG020237.D
 Acq On : 17 Dec 2015 1:28
 Operator : UM/SJ
 Sample : G4767-12
 Misc :
 ALS Vial : 23 Sample Multiplier: 1

Instrument :
 BNA_G
 ClientSampleId :
 D9N34

Integration Parameters: LSCINT.P

Integrator: RTE
 Smoothing : OFF
 Sampling : 1
 Start Thrs: 0.2
 Stop Thrs : 0

Filtering: 5
 Min Area: 0.1 % of largest Peak
 Max Peaks: 100
 Peak Location: TOP

If leading or trailing edge < 100 prefer < Baseline drop else tangent >
 Peak separation: 5

Method : Z:\HPCHEM1\BNA_G\METHODS\SOM02.2-EPA-BG121415.M
 Title : SVOA CALIBRATION

72	20.208	2948	2956	2961	rBV2	347665	954697	4.55%	0.615%
73	20.255	2961	2964	2970	rVV	180176	234103	1.12%	0.151%
74	20.331	2971	2977	2978	rVV2	226629	364640	1.74%	0.235%
75	20.372	2979	2984	2989	rVB	1192892	1750293	8.34%	1.128%
76	20.472	2994	3001	3005	rBV	1341181	1988429	9.47%	1.281%
77	20.531	3005	3011	3014	rVV2	358642	701596	3.34%	0.452%
78	20.566	3014	3017	3020	rVV	230000	271825	1.30%	0.175%
79	20.601	3020	3023	3028	rVB2	130098	203843	0.97%	0.131%
80	20.666	3030	3034	3038	rBV	177174	265386	1.26%	0.171%
81	20.713	3038	3042	3045	rVB2	161052	192854	0.92%	0.124%
82	20.895	3068	3073	3076	rBV	204345	291605	1.39%	0.188%
83	21.083	3100	3105	3110	rBV	165234	308750	1.47%	0.199%
84	21.318	3140	3145	3149	rBV	302884	477088	2.27%	0.307%
85	21.359	3149	3152	3157	rVV	324603	516786	2.46%	0.333%
86	21.412	3157	3161	3166	rVV2	260287	461145	2.20%	0.297%
87	21.600	3184	3193	3199	rBV	104114	248846	1.19%	0.160%
88	21.729	3205	3215	3222	rBV3	1465892	3316455	15.80%	2.137%
89	21.800	3222	3227	3239	rVB	1037332	1874022	8.93%	1.207%
90	21.947	3247	3252	3261	rBV	274297	483306	2.30%	0.311%
91	22.152	3281	3287	3294	rBV2	158496	335671	1.60%	0.216%
92	22.482	3335	3343	3348	rVV	130091	311627	1.48%	0.201%
93	22.811	3395	3399	3406	rVB3	118319	228505	1.09%	0.147%
94	22.899	3408	3414	3428	rVB3	74827	193797	0.92%	0.125%
95	23.980	3587	3598	3605	rBV2	293465	1050819	5.01%	0.677%
96	24.708	3714	3722	3728	rBV	124061	327306	1.56%	0.211%
97	24.785	3728	3735	3741	rVV	139943	387758	1.85%	0.250%
98	24.861	3741	3748	3762	rVB2	199154	588727	2.81%	0.379%
99	25.014	3763	3774	3782	rVV2	185350	583171	2.78%	0.376%
100	28.733	4396	4407	4424	rVB3	43712	217334	1.04%	0.140%

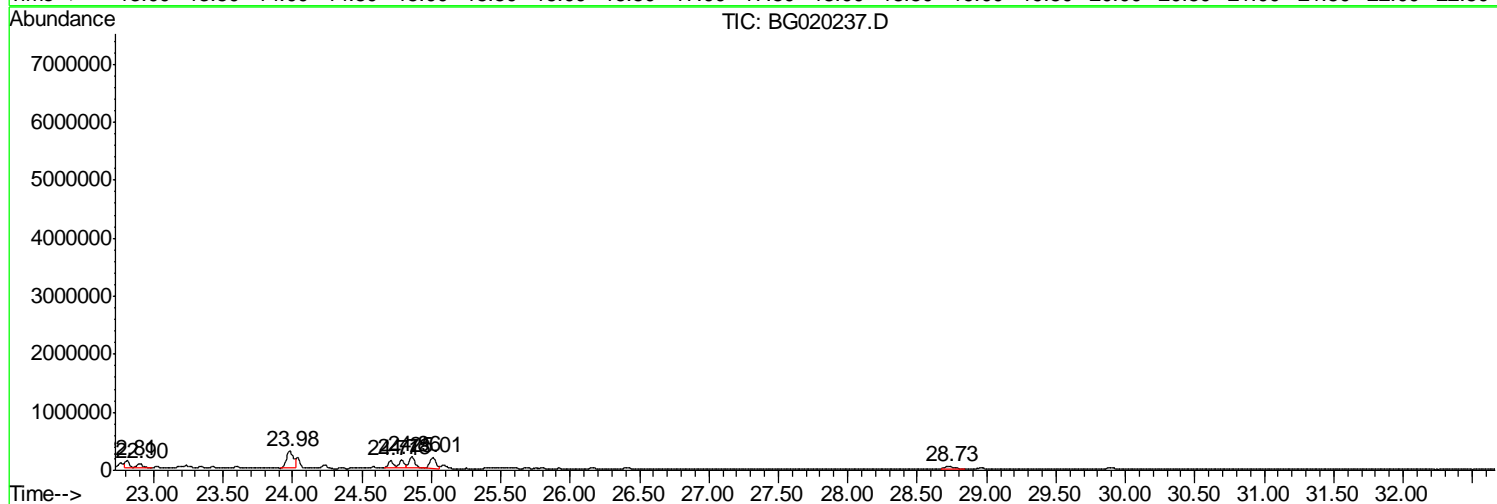
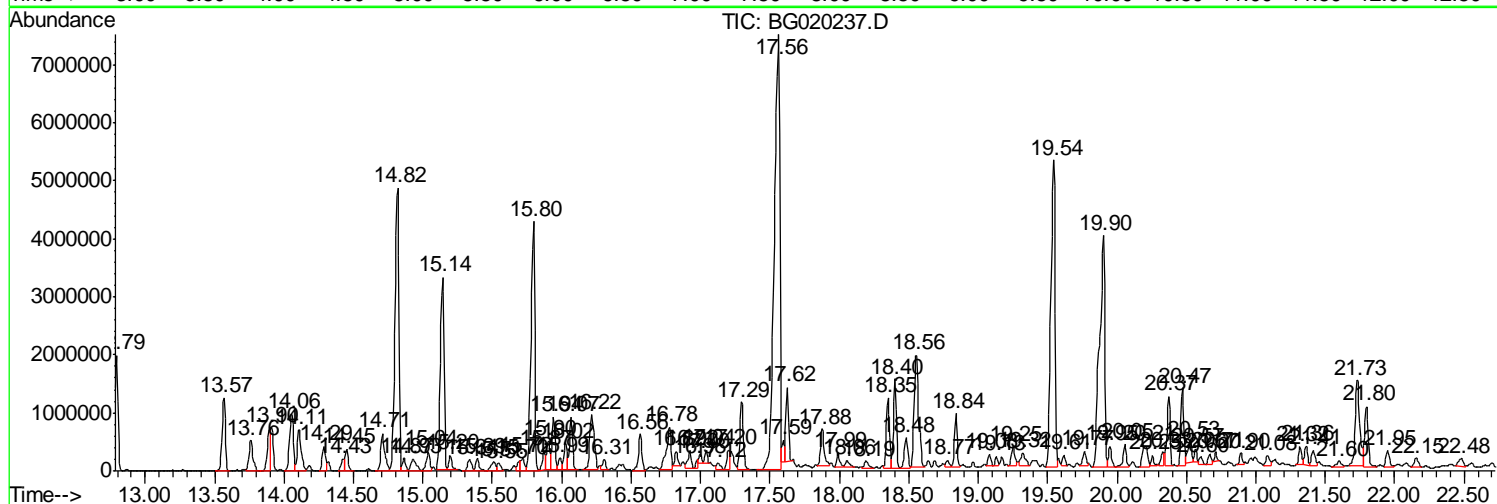
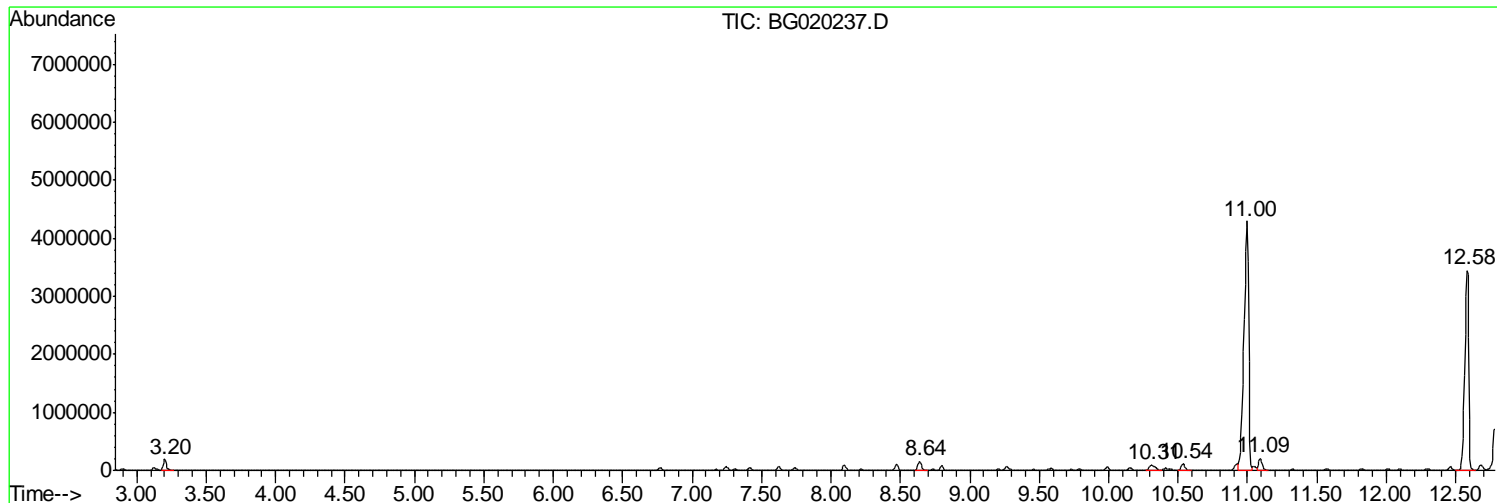
Sum of corrected areas: 155209966

Data Path : Z:\HPCHEM1\BNA_G\DATA\BG121715\
 Data File : BG020237.D
 Acq On : 17 Dec 2015 1:28
 Operator : UM/SJ
 Sample : G4767-12
 Misc :
 ALS Vial : 23 Sample Multiplier: 1

Instrument :
 BNA_G
 ClientSampled :
 D9N34

Quant Method : Z:\HPCHEM1\BNA_G\METHODS\SOM02.2-EPA-BG121415.M
 Quant Title : SVOA CALIBRATION

TIC Library : C:\DATABASE\NIST02.L
 TIC Integration Parameters: LSCINT.P



Data Path : Z:\HPCHEM1\BNA_G\DATA\BG121715\
 Data File : BG020237.D
 Acq On : 17 Dec 2015 1:28
 Operator : UM/SJ
 Sample : G4767-12
 Misc :
 ALS Vial : 23 Sample Multiplier: 1

Instrument :
 BNA_G
 ClientSampled :
 D9N34

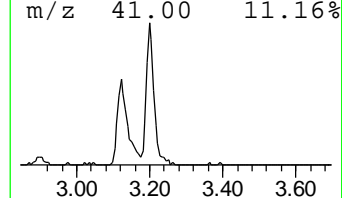
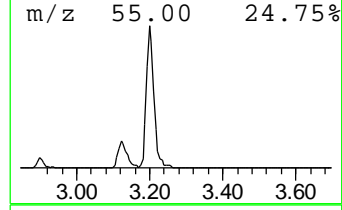
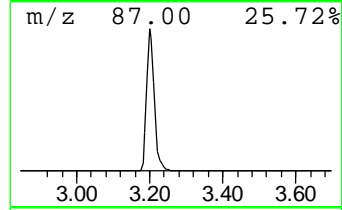
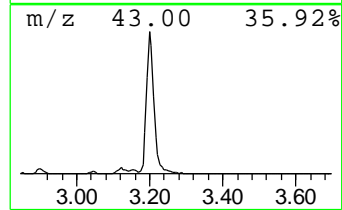
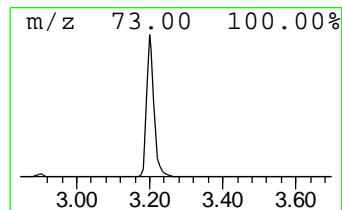
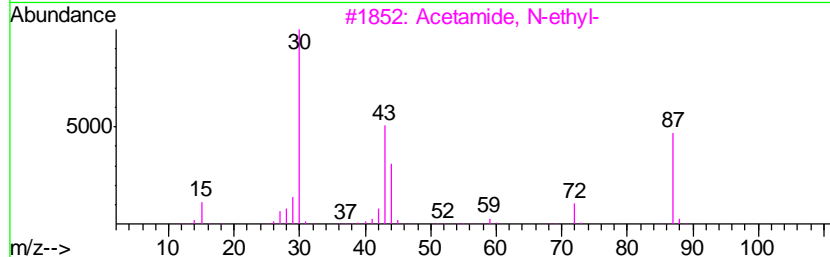
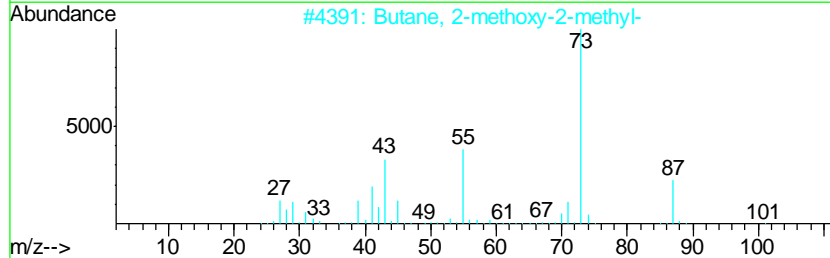
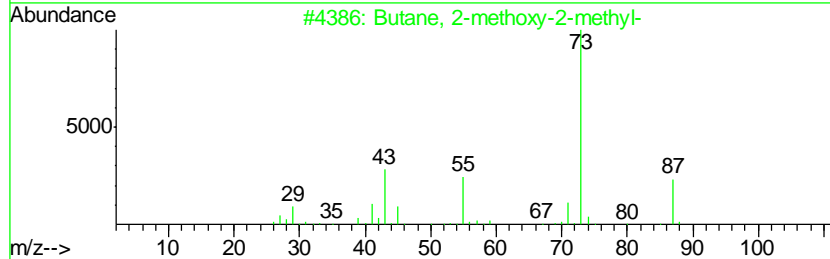
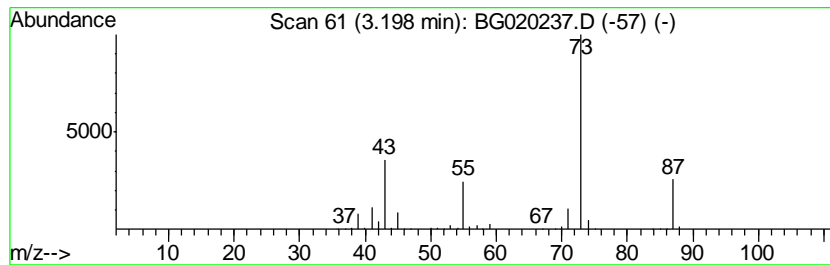
Quant Method : Z:\HPCHEM1\BNA_G\METHODS\SOM02.2-EPA-BG121415.M
 Quant Title : SVOA CALIBRATION

TIC Library : C:\DATABASE\NIST02.L
 TIC Integration Parameters: LSCINT.P

 Peak Number 1 Butane, 2-methoxy-2-methyl- Concentration Rank 5

R.T.	EstConc	Area	Relative to ISTD	R.T.
3.20	19.51 ng/ul	261757	1,4-Dichlorobenzene-d4	8.10

Hit#	of	Tentative ID	MW	MolForm	CAS#	Qual
1	5	Butane, 2-methoxy-2-methyl-	102	C6H14O	000994-05-8	78
2		Butane, 2-methoxy-2-methyl-	102	C6H14O	000994-05-8	78
3		Acetamide, N-ethyl-	87	C4H9NO	000625-50-3	22
4		Pentane, 3-methoxy-	102	C6H14O	036839-67-5	17
5		Silane, tetramethyl-	88	C4H12Si	000075-76-3	9



Data Path : Z:\HPCHEM1\BNA_G\DATA\BG121715\
 Data File : BG020237.D
 Acq On : 17 Dec 2015 1:28
 Operator : UM/SJ
 Sample : G4767-12
 Misc :
 ALS Vial : 23 Sample Multiplier: 1

Instrument :
 BNA_G
 ClientSampleID :
 D9N34

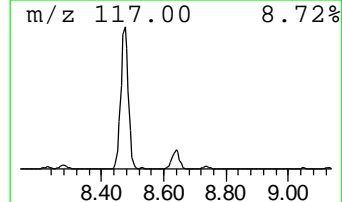
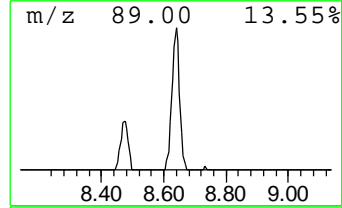
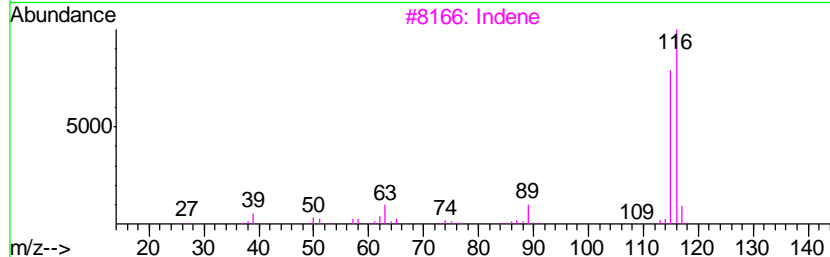
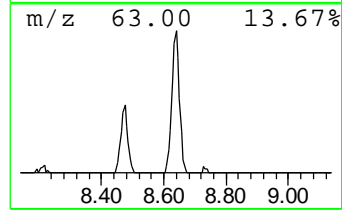
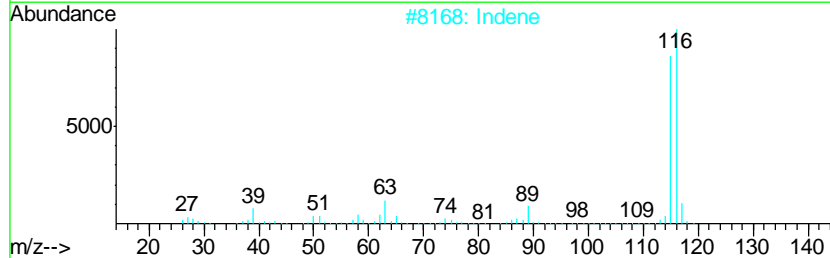
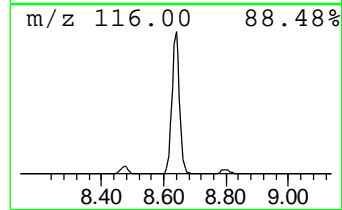
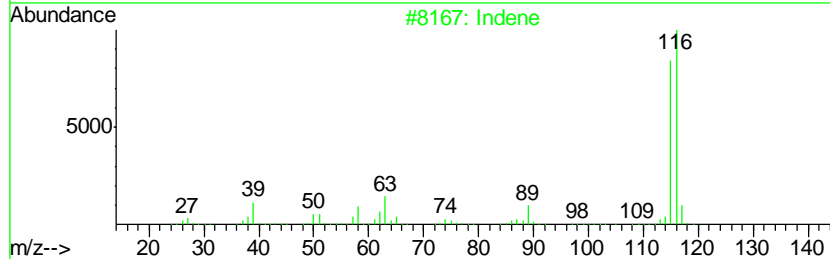
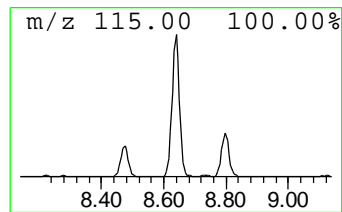
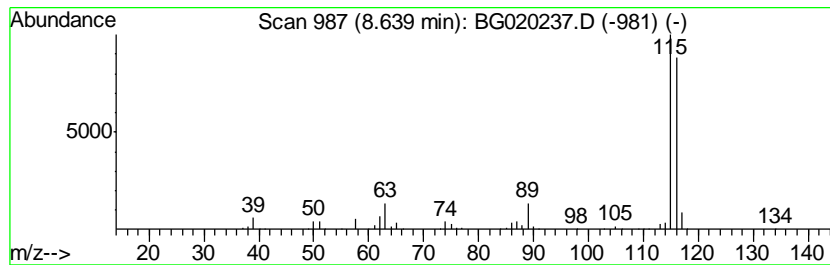
Quant Method : Z:\HPCHEM1\BNA_G\METHODS\SOM02.2-EPA-BG121415.M
 Quant Title : SVOA CALIBRATION

TIC Library : C:\DATABASE\NIST02.L
 TIC Integration Parameters: LSCINT.P

 Peak Number 2 Indene Concentration Rank 4

R.T.	EstConc	Area	Relative to ISTD	R.T.
8.64	20.00 ng/ul	268287	1,4-Dichlorobenzene-d4	8.10

Hit#	of	Tentative ID	MW	MolForm	CAS#	Qual
1	5	Indene	116	C9H8	000095-13-6	95
2		Indene	116	C9H8	000095-13-6	95
3		Indene	116	C9H8	000095-13-6	94
4		Benzene, 1-propynyl-	116	C9H8	000673-32-5	94
5		Benzene, 1,2-propadienyl-	116	C9H8	002327-99-3	91



Data Path : Z:\HPCHEM1\BNA_G\DATA\BG121715\
 Data File : BG020237.D
 Acq On : 17 Dec 2015 1:28
 Operator : UM/SJ
 Sample : G4767-12
 Misc :
 ALS Vial : 23 Sample Multiplier: 1

Instrument :
 BNA_G
 ClientSampleId :
 D9N34

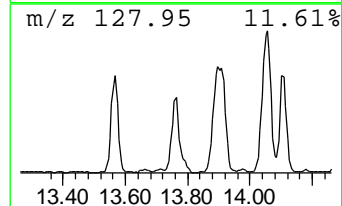
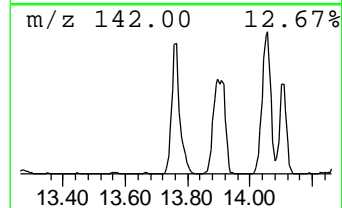
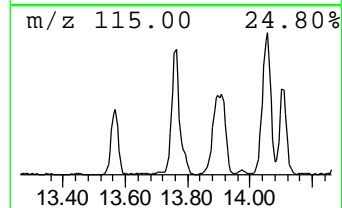
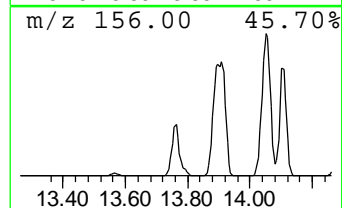
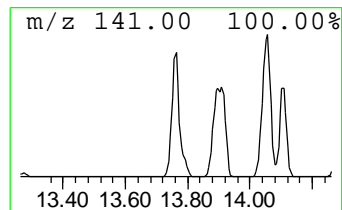
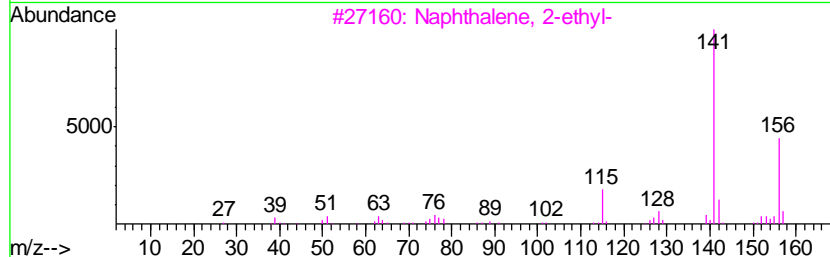
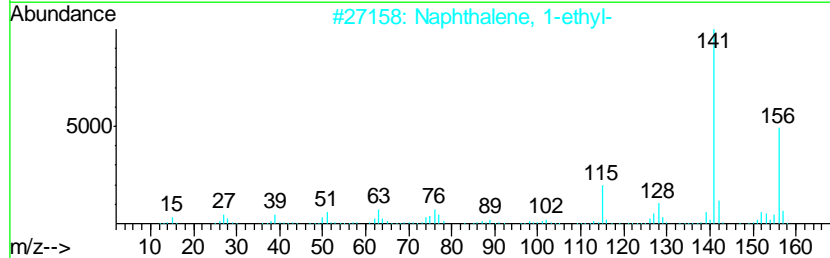
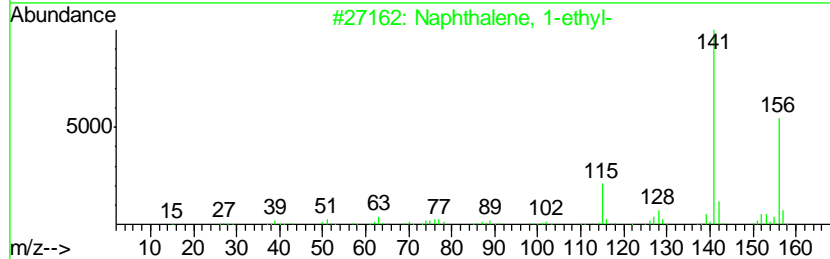
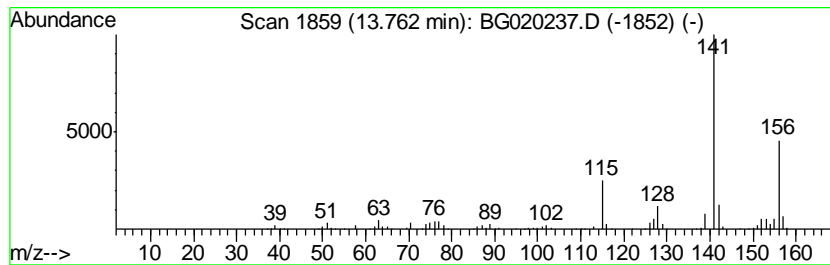
Quant Method : Z:\HPCHEM1\BNA_G\METHODS\SOM02.2-EPA-BG121415.M
 Quant Title : SVOA CALIBRATION

TIC Library : C:\DATABASE\NIST02.L
 TIC Integration Parameters: LSCINT.P

 Peak Number 3 Naphthalene, 1-ethyl- Concentration Rank 7

R.T.	EstConc	Area	Relative to ISTD	R.T.
13.76	15.69 ng/ul	1003300	Acenaphthene-d10	14.73

Hit#	of	Tentative ID	MW	MolForm	CAS#	Qual
1	5	Naphthalene, 1-ethyl-	156	C12H12	001127-76-0	97
2		Naphthalene, 1-ethyl-	156	C12H12	001127-76-0	94
3		Naphthalene, 2-ethyl-	156	C12H12	000939-27-5	93
4		Naphthalene, 1-ethyl-	156	C12H12	001127-76-0	91
5		Naphthalene, 2-ethyl-	156	C12H12	000939-27-5	91



Data Path : Z:\HPCHEM1\BNA_G\DATA\BG121715\
 Data File : BG020237.D
 Acq On : 17 Dec 2015 1:28
 Operator : UM/SJ
 Sample : G4767-12
 Misc :
 ALS Vial : 23 Sample Multiplier: 1

Instrument :
 BNA_G
 ClientSampled :
 D9N34

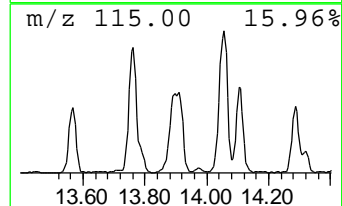
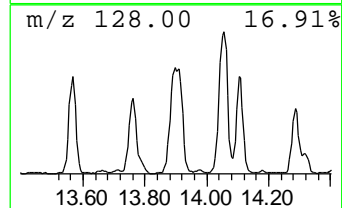
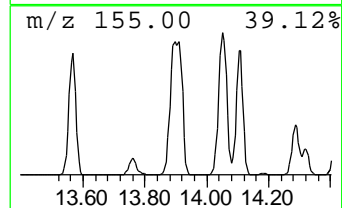
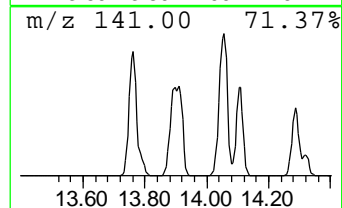
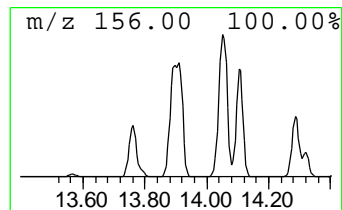
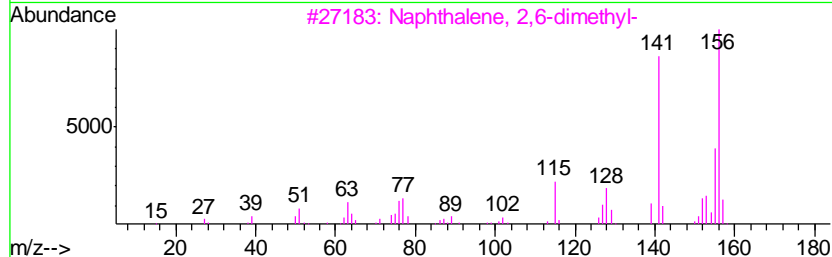
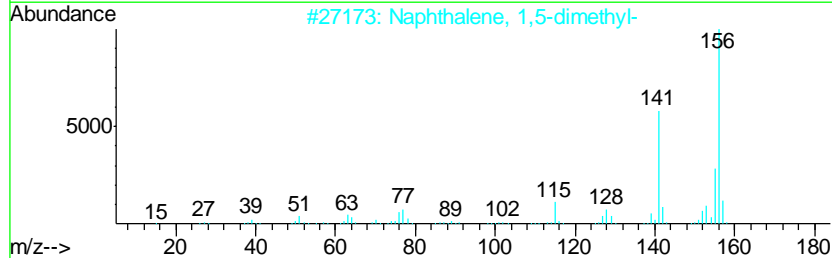
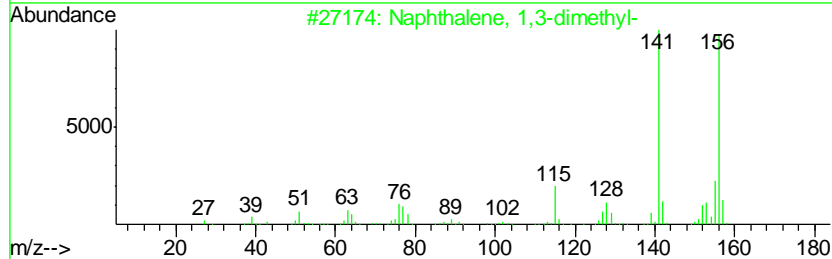
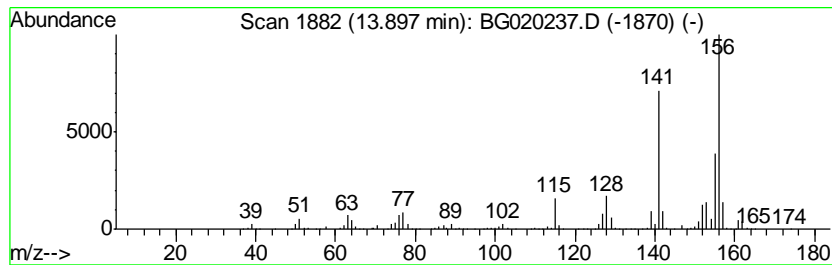
Quant Method : Z:\HPCHEM1\BNA_G\METHODS\SOM02.2-EPA-BG121415.M
 Quant Title : SVOA CALIBRATION

TIC Library : C:\DATABASE\NIST02.L
 TIC Integration Parameters: LSCINT.P

 Peak Number 4 Naphthalene, 1,3-dimethyl- Concentration Rank 6

R.T.	EstConc	Area	Relative to ISTD	R.T.
13.90	19.17 ng/ul	1226000	Acenaphthene-d10	14.73

Hit#	of	Tentative ID	MW	MolForm	CAS#	Qual
1	5	Naphthalene, 1,3-dimethyl-	156	C12H12	000575-41-7	96
2		Naphthalene, 1,5-dimethyl-	156	C12H12	000571-61-9	96
3		Naphthalene, 2,6-dimethyl-	156	C12H12	000581-42-0	96
4		Naphthalene, 2,3-dimethyl-	156	C12H12	000581-40-8	96
5		Naphthalene, 1,6-dimethyl-	156	C12H12	000575-43-9	96



Data Path : Z:\HPCHEM1\BNA_G\DATA\BG121715\
 Data File : BG020237.D
 Acq On : 17 Dec 2015 1:28
 Operator : UM/SJ
 Sample : G4767-12
 Misc :
 ALS Vial : 23 Sample Multiplier: 1

Instrument :
 BNA_G
 ClientSampled :
 D9N34

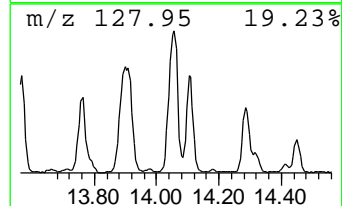
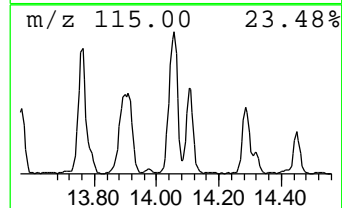
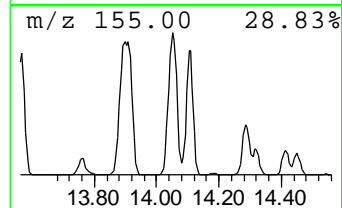
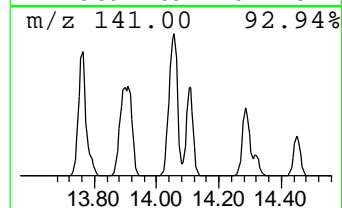
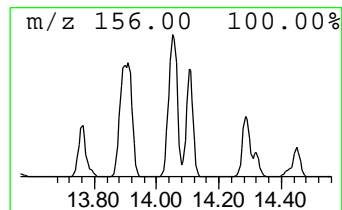
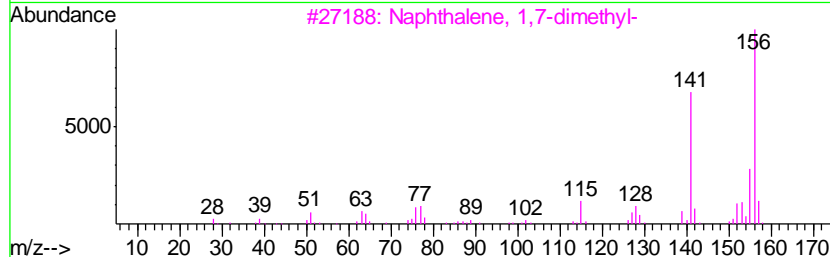
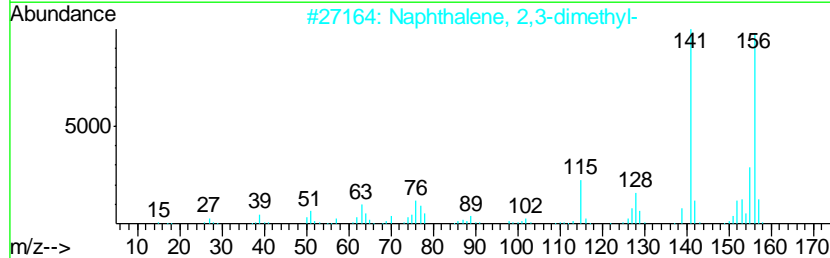
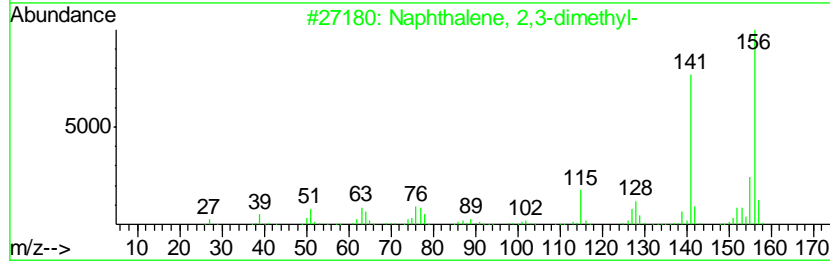
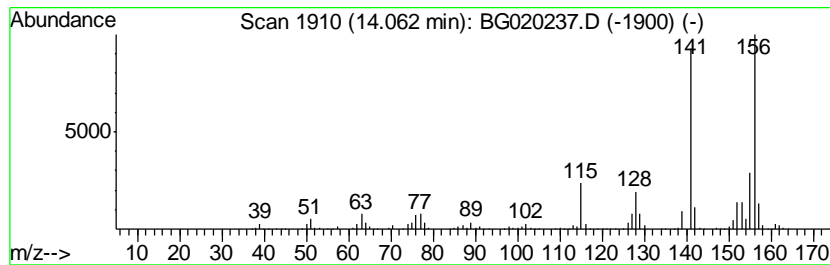
Quant Method : Z:\HPCHEM1\BNA_G\METHODS\SOM02.2-EPA-BG121415.M
 Quant Title : SVOA CALIBRATION

TIC Library : C:\DATABASE\NIST02.L
 TIC Integration Parameters: LSCINT.P

 Peak Number 5 Naphthalene, 2,3-dimethyl- Concentration Rank 1

R.T.	EstConc	Area	Relative to ISTD	R.T.
14.06	29.41 ng/ul	1881260	Acenaphthene-d10	14.73

Hit#	of	Tentative ID	MW	MolForm	CAS#	Qual
1	5	Naphthalene, 2,3-dimethyl-	156	C12H12	000581-40-8	97
2		Naphthalene, 2,3-dimethyl-	156	C12H12	000581-40-8	97
3		Naphthalene, 1,7-dimethyl-	156	C12H12	000575-37-1	97
4		Naphthalene, 1,7-dimethyl-	156	C12H12	000575-37-1	96
5		Naphthalene, 1,6-dimethyl-	156	C12H12	000575-43-9	96



Data Path : Z:\HPCHEM1\BNA_G\DATA\BG121715\
 Data File : BG020237.D
 Acq On : 17 Dec 2015 1:28
 Operator : UM/SJ
 Sample : G4767-12
 Misc :
 ALS Vial : 23 Sample Multiplier: 1

Instrument :
 BNA_G
 ClientSampleID :
 D9N34

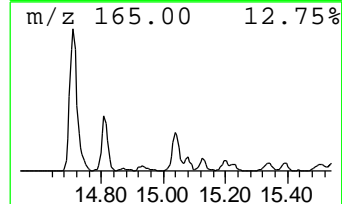
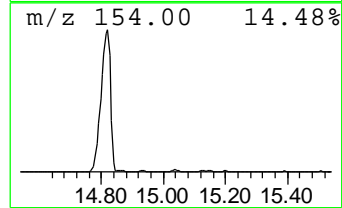
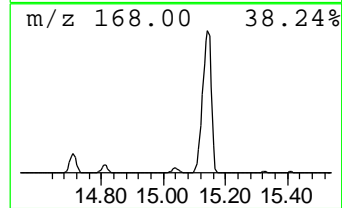
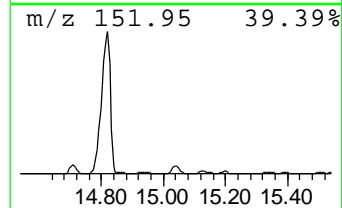
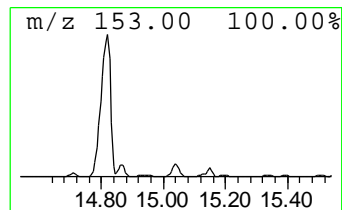
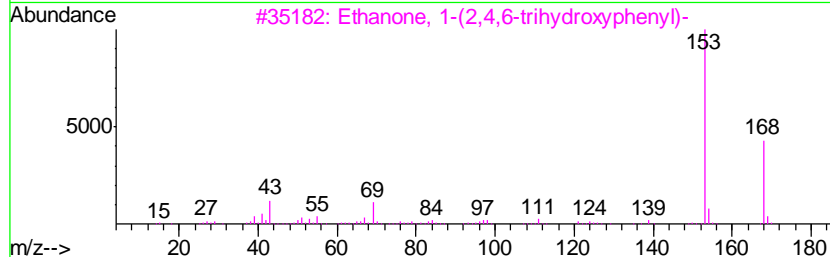
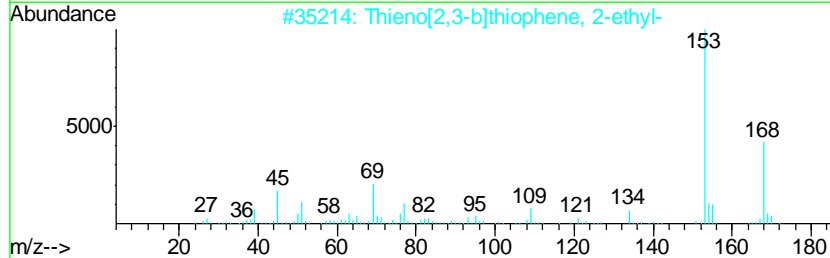
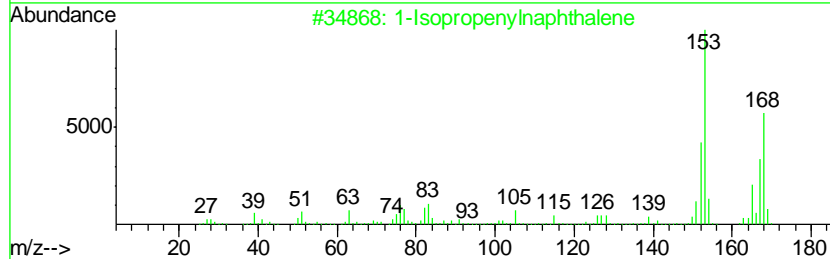
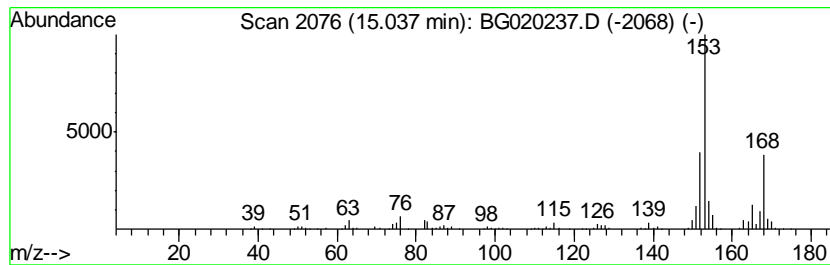
Quant Method : Z:\HPCHEM1\BNA_G\METHODS\SOM02.2-EPA-BG121415.M
 Quant Title : SVOA CALIBRATION

TIC Library : C:\DATABASE\NIST02.L
 TIC Integration Parameters: LSCINT.P

 Peak Number 7 1-Isopropenylnaphthalene Concentration Rank 13

R.T.	EstConc	Area	Relative to ISTD	R.T.
15.04	8.52 ng/ul	545036	Acenaphthene-d10	14.73

Hit#	of	Tentative ID	MW	MolForm	CAS#	Qual
1	5	1-Isopropenylnaphthalene	168	C13H12	001855-47-6	83
2		Thieno[2,3-b]thiophene, 2-ethyl-	168	C8H8S2	005912-01-6	50
3		Ethanone, 1-(2,4,6-trihydroxyphe...	168	C8H8O4	000480-66-0	47
4		Ethanone, 1-(2,3,4-trihydroxyphe...	168	C8H8O4	000528-21-2	47
5		Acetophenone, 3'-fluoro-4'-methoxy-	168	C9H9FO2	000455-91-4	47



Data Path : Z:\HPCHEM1\BNA_G\DATA\BG121715\
 Data File : BG020237.D
 Acq On : 17 Dec 2015 1:28
 Operator : UM/SJ
 Sample : G4767-12
 Misc :
 ALS Vial : 23 Sample Multiplier: 1

Instrument :
 BNA_G
 ClientSampleID :
 D9N34

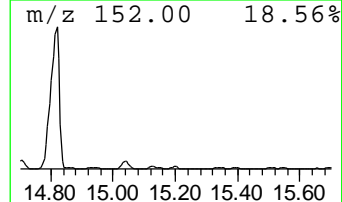
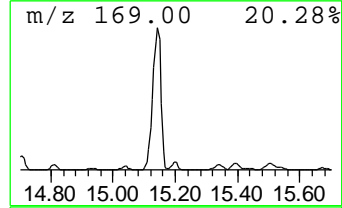
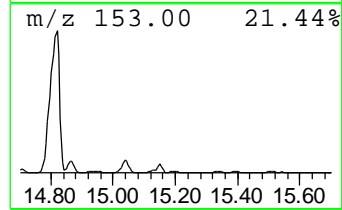
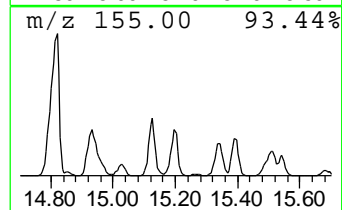
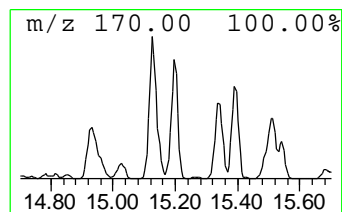
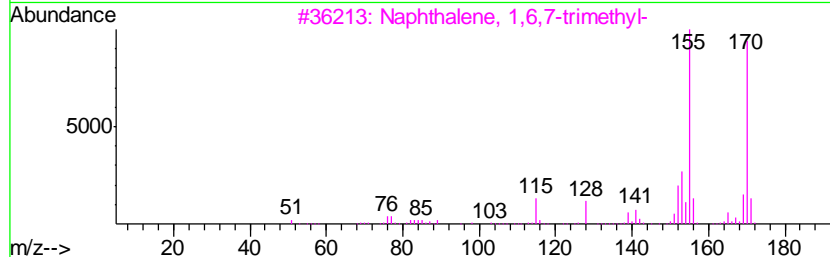
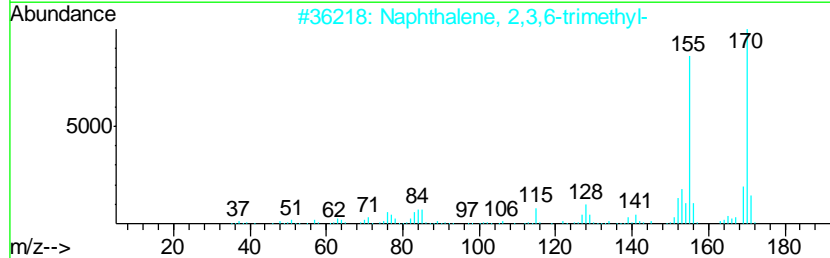
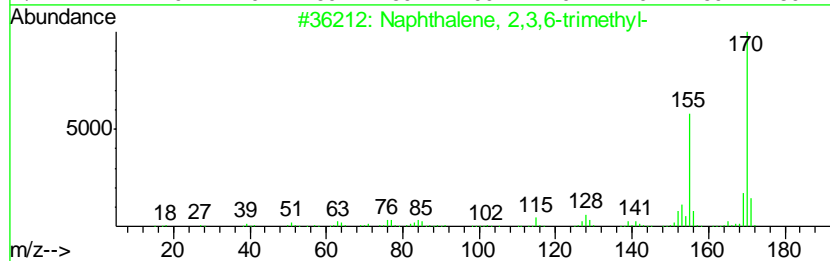
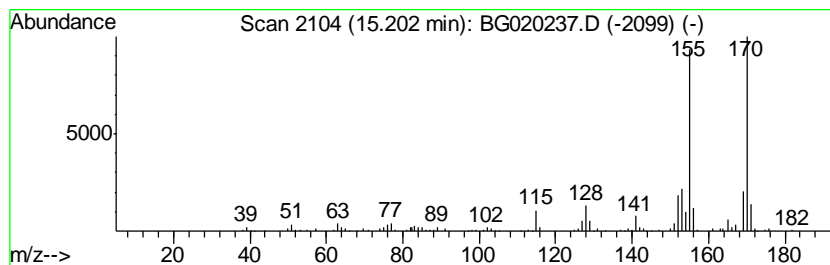
Quant Method : Z:\HPCHEM1\BNA_G\METHODS\SOM02.2-EPA-BG121415.M
 Quant Title : SVOA CALIBRATION

TIC Library : C:\DATABASE\NIST02.L
 TIC Integration Parameters: LSCINT.P

 Peak Number 8 Naphthalene, 2,3,6-trimethyl- Concentration Rank 14

R.T.	EstConc	Area	Relative to ISTD	R.T.
15.20	6.22 ng/ul	398091	Acenaphthene-d10	14.73

Hit#	of	Tentative ID	MW	MolForm	CAS#	Qual
1	5	Naphthalene, 2,3,6-trimethyl-	170	C13H14	000829-26-5	96
2		Naphthalene, 2,3,6-trimethyl-	170	C13H14	000829-26-5	94
3		Naphthalene, 1,6,7-trimethyl-	170	C13H14	002245-38-7	94
4		Naphthalene, 1,6,7-trimethyl-	170	C13H14	002245-38-7	94
5		Naphthalene, 1,6,7-trimethyl-	170	C13H14	002245-38-7	94



Data Path : Z:\HPCHEM1\BNA_G\DATA\BG121715\
 Data File : BG020237.D
 Acq On : 17 Dec 2015 1:28
 Operator : UM/SJ
 Sample : G4767-12
 Misc :
 ALS Vial : 23 Sample Multiplier: 1

Instrument :
 BNA_G
 ClientSampleID :
 D9N34

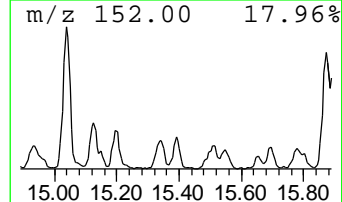
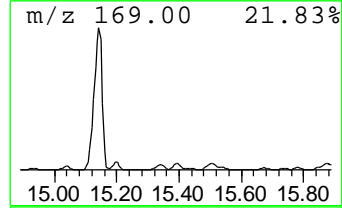
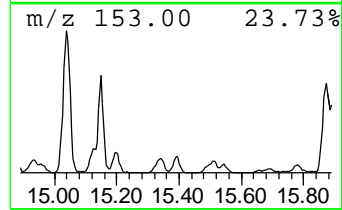
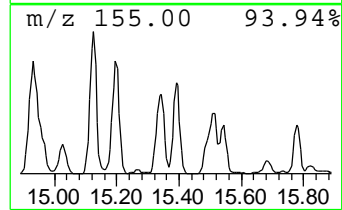
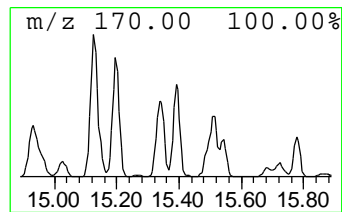
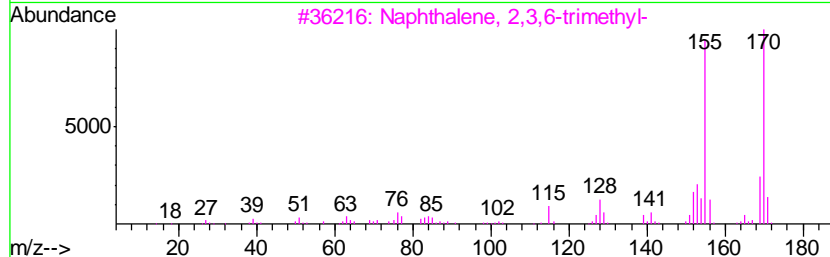
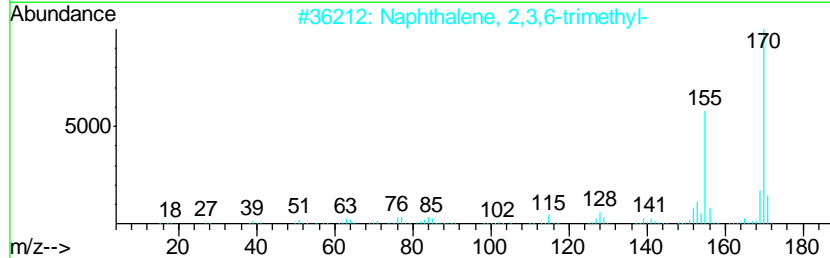
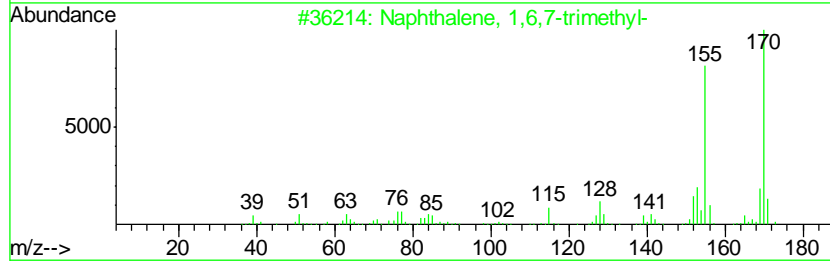
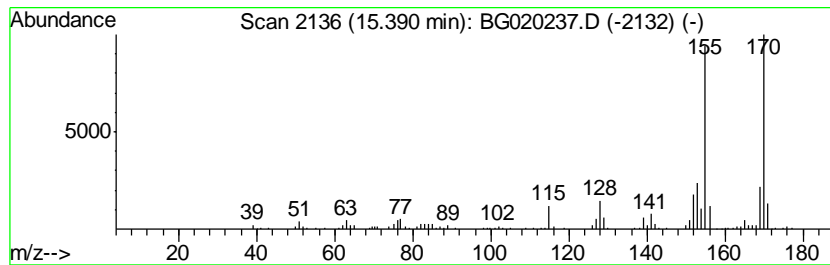
Quant Method : Z:\HPCHEM1\BNA_G\METHODS\SOM02.2-EPA-BG121415.M
 Quant Title : SVOA CALIBRATION

TIC Library : C:\DATABASE\NIST02.L
 TIC Integration Parameters: LSCINT.P

 Peak Number 10 Naphthalene, 1,6,7-trimethyl- Concentration Rank 19

R.T.	EstConc	Area	Relative to ISTD	R.T.
15.39	5.33 ng/ul	340621	Acenaphthene-d10	14.73

Hit#	of	Tentative ID	MW	MolForm	CAS#	Qual
1	5	Naphthalene, 1,6,7-trimethyl-	170	C13H14	002245-38-7	97
2		Naphthalene, 2,3,6-trimethyl-	170	C13H14	000829-26-5	97
3		Naphthalene, 2,3,6-trimethyl-	170	C13H14	000829-26-5	96
4		Naphthalene, 1,4,6-trimethyl-	170	C13H14	002131-42-2	96
5		Naphthalene, 2,3,6-trimethyl-	170	C13H14	000829-26-5	94



Data Path : Z:\HPCHEM1\BNA_G\DATA\BG121715\
 Data File : BG020237.D
 Acq On : 17 Dec 2015 1:28
 Operator : UM/SJ
 Sample : G4767-12
 Misc :
 ALS Vial : 23 Sample Multiplier: 1

Instrument :
 BNA_G
 ClientSampled :
 D9N34

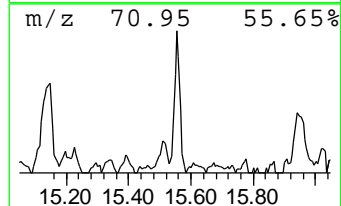
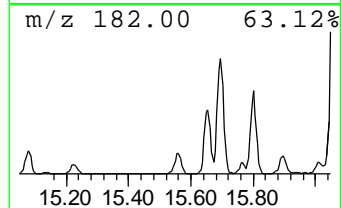
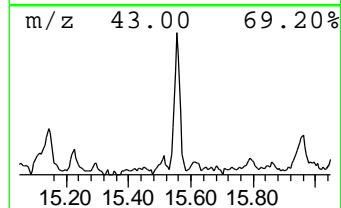
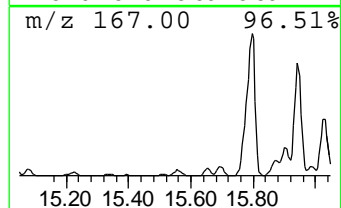
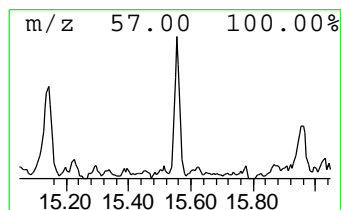
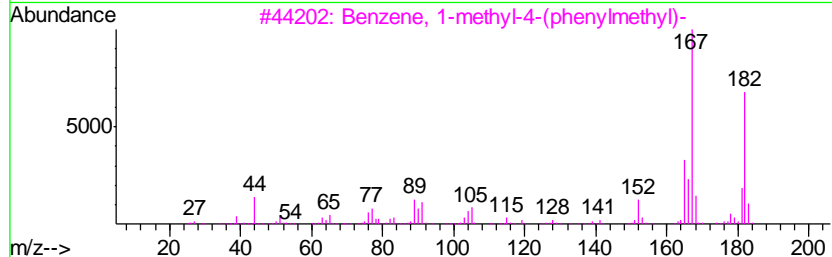
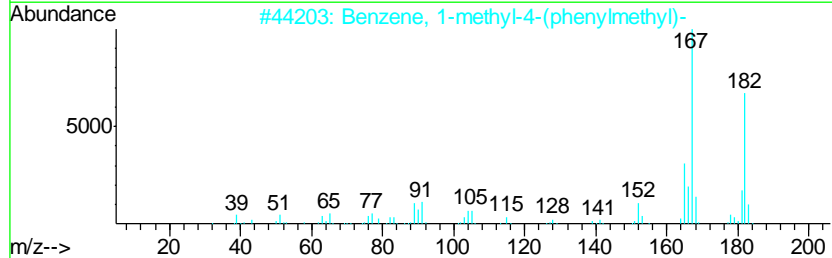
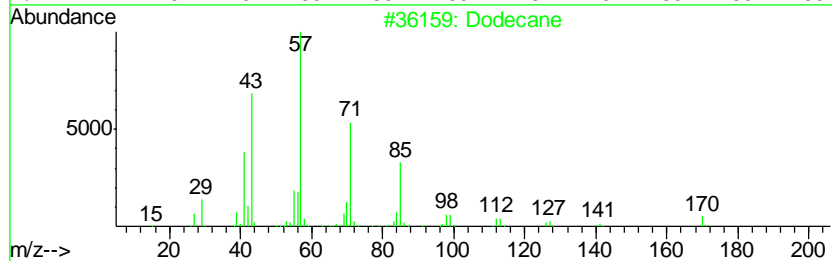
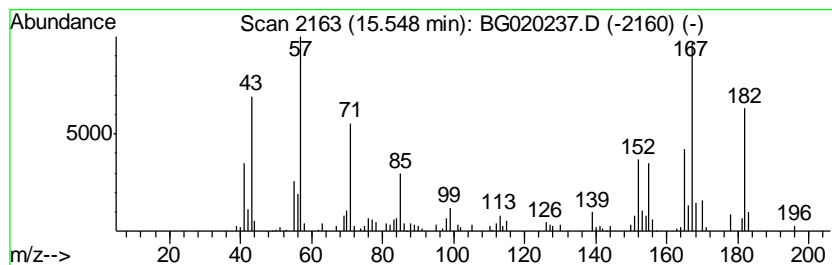
Quant Method : Z:\HPCHEM1\BNA_G\METHODS\SOM02.2-EPA-BG121415.M
 Quant Title : SVOA CALIBRATION

TIC Library : C:\DATABASE\NIST02.L
 TIC Integration Parameters: LSCINT.P

 Peak Number 12 (DEL) Alkane: Straight-Chai... Concentration Rank 23

R.T.	EstConc	Area	Relative to ISTD	R.T.
15.55	3.31 ng/ul	211892	Acenaphthene-d10	14.73

Hit#	of	Tentative ID	MW	MolForm	CAS#	Qual
1	5	Dodecane	170	C12H26	000112-40-3	55
2		Benzene, 1-methyl-4-(phenylmethyl)-	182	C14H14	000620-83-7	52
3		Benzene, 1-methyl-4-(phenylmethyl)-	182	C14H14	000620-83-7	52
4		4-Ethylbiphenyl	182	C14H14	005707-44-8	46
5		1,4-Methanonaphthalene,1,4-dihyd...	182	C14H14	007350-72-3	46



Data Path : Z:\HPCHEM1\BNA_G\DATA\BG121715\
 Data File : BG020237.D
 Acq On : 17 Dec 2015 1:28
 Operator : UM/SJ
 Sample : G4767-12
 Misc :
 ALS Vial : 23 Sample Multiplier: 1

Instrument :
 BNA_G
 ClientSampleID :
 D9N34

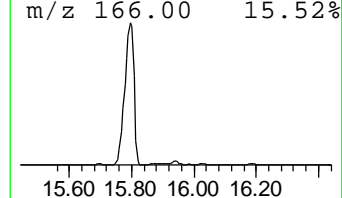
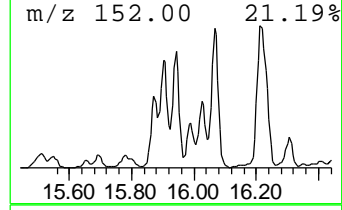
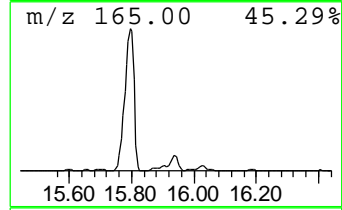
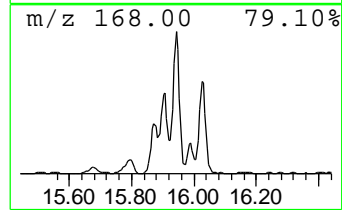
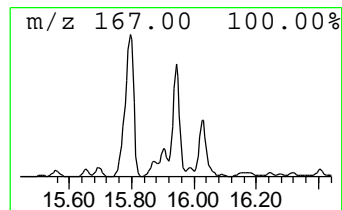
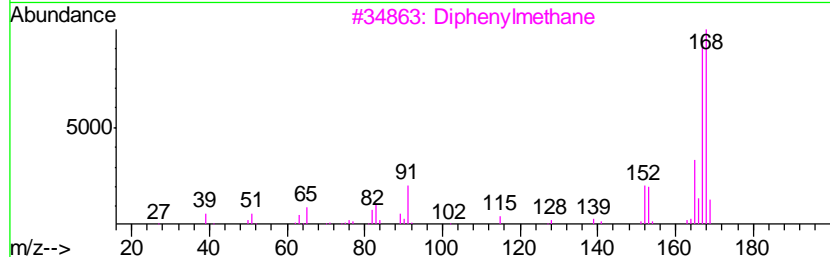
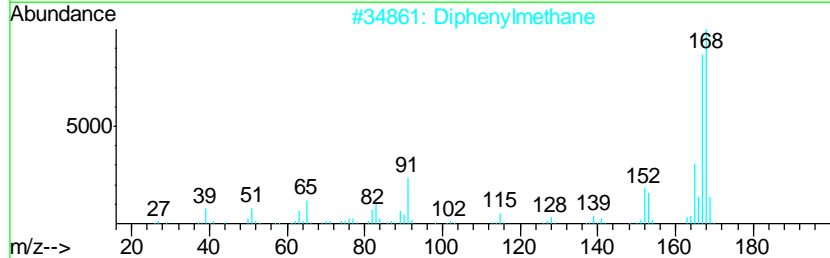
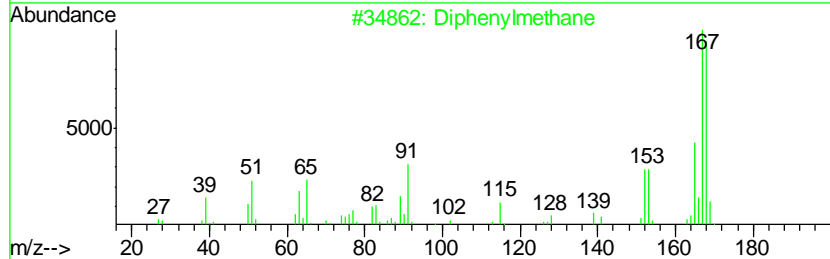
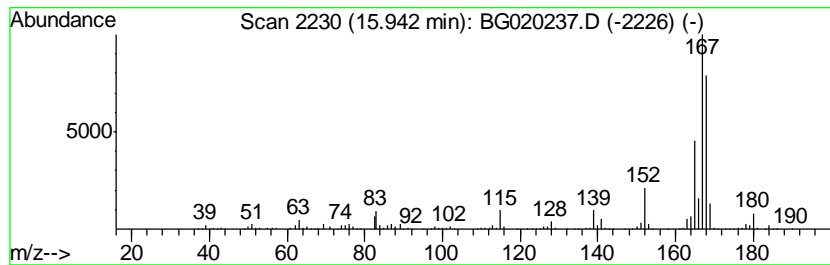
Quant Method : Z:\HPCHEM1\BNA_G\METHODS\SOM02.2-EPA-BG121415.M
 Quant Title : SVOA CALIBRATION

TIC Library : C:\DATABASE\NIST02.L
 TIC Integration Parameters: LSCINT.P

 Peak Number 13 Diphenylmethane Concentration Rank 2

R.T.	EstConc	Area	Relative to ISTD	R.T.
15.94	22.93 ng/ul	1466680	Acenaphthene-d10	14.73

Hit#	of	Tentative ID	MW	MolForm	CAS#	Qual
1	5	Diphenylmethane	168	C13H12	000101-81-5	90
2		Diphenylmethane	168	C13H12	000101-81-5	64
3		Diphenylmethane	168	C13H12	000101-81-5	64
4		Fluorene, 2,4a-dihydro-	168	C13H12	059247-36-8	59
5		Diphenylmethane	168	C13H12	000101-81-5	59



Data Path : Z:\HPCHEM1\BNA_G\DATA\BG121715\
 Data File : BG020237.D
 Acq On : 17 Dec 2015 1:28
 Operator : UM/SJ
 Sample : G4767-12
 Misc :
 ALS Vial : 23 Sample Multiplier: 1

Instrument :
 BNA_G
 ClientSampleID :
 D9N34

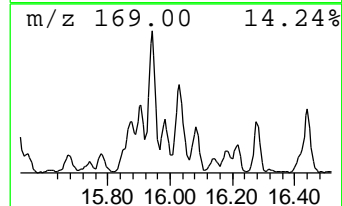
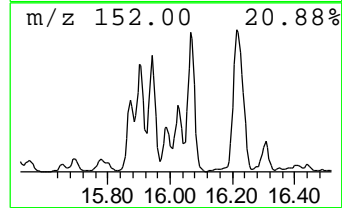
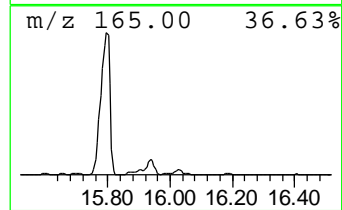
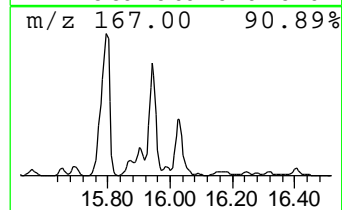
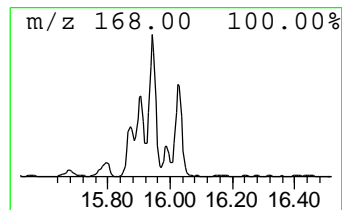
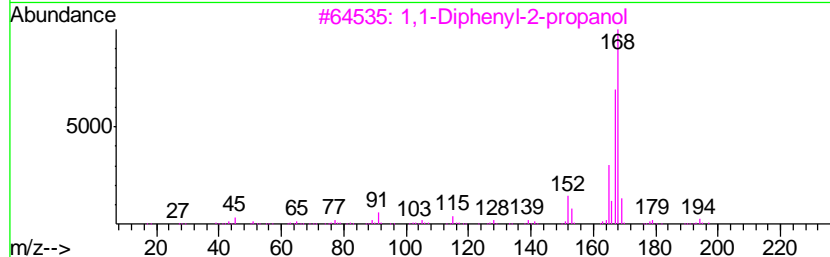
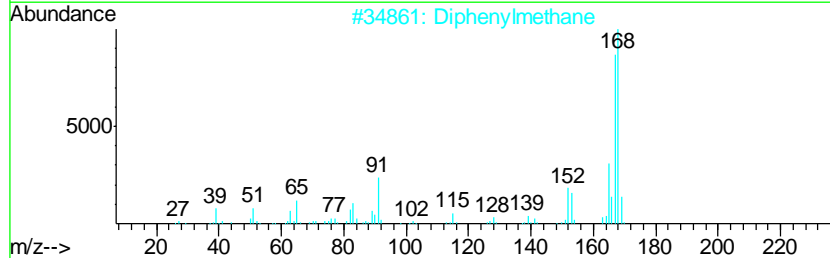
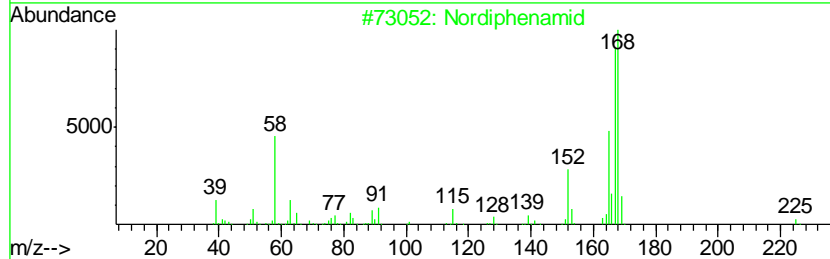
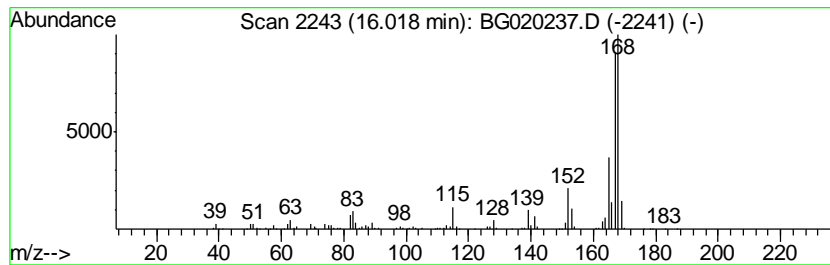
Quant Method : Z:\HPCHEM1\BNA_G\METHODS\SOM02.2-EPA-BG121415.M
 Quant Title : SVOA CALIBRATION

TIC Library : C:\DATABASE\NIST02.L
 TIC Integration Parameters: LSCINT.P

 Peak Number 15 Nordiphenamid Concentration Rank 10

R.T.	EstConc	Area	Relative to ISTD	R.T.
16.02	10.94 ng/ul	699727	Acenaphthene-d10	14.73

Hit#	of	Tentative ID	MW	MolForm	CAS#	Qual
1	5	Nordiphenamid	225	C15H15NO	000954-21-2	90
2		Diphenylmethane	168	C13H12	000101-81-5	87
3		1,1-Diphenyl-2-propanol	212	C15H16O	029338-49-6	83
4		1,1'-Biphenyl, 2-methyl-	168	C13H12	000643-58-3	81
5		1,1'-Biphenyl, 2-methyl-	168	C13H12	000643-58-3	74



Data Path : Z:\HPCHEM1\BNA_G\DATA\BG121715\
 Data File : BG020237.D
 Acq On : 17 Dec 2015 1:28
 Operator : UM/SJ
 Sample : G4767-12
 Misc :
 ALS Vial : 23 Sample Multiplier: 1

Instrument :
 BNA_G
 ClientSampleID :
 D9N34

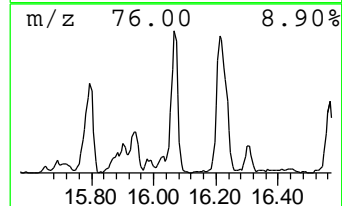
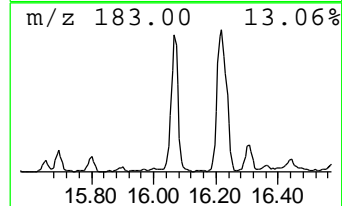
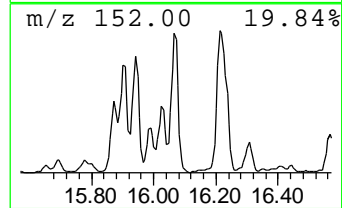
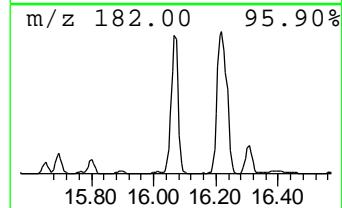
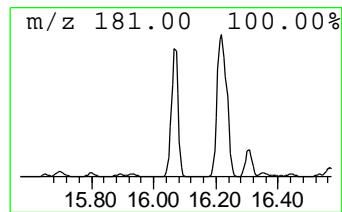
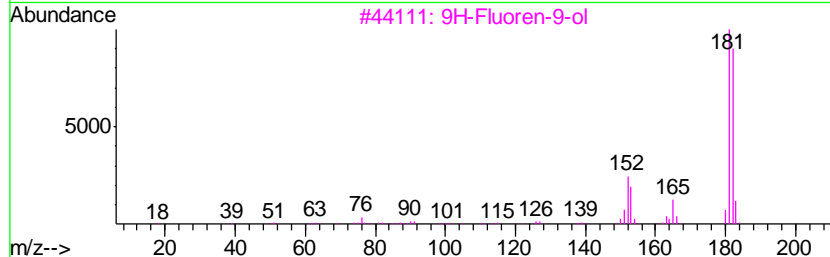
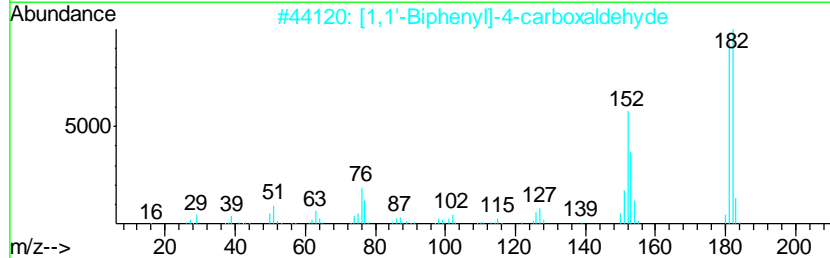
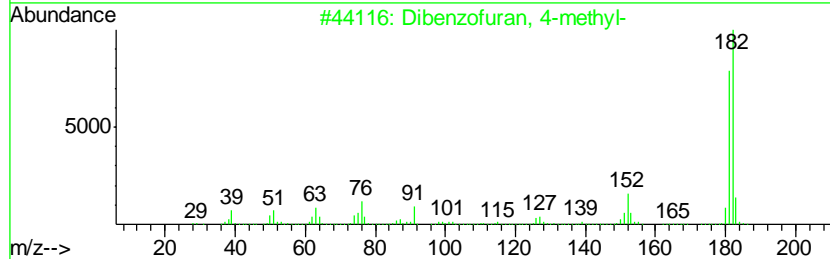
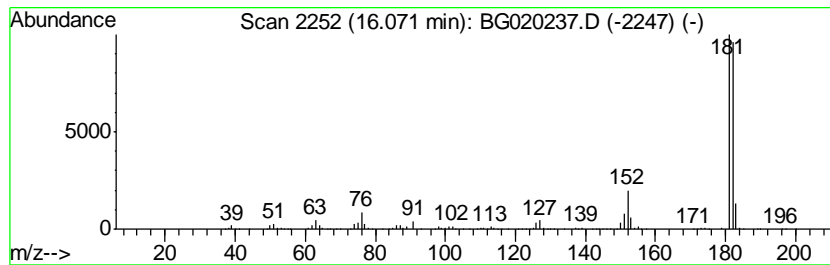
Quant Method : Z:\HPCHEM1\BNA_G\METHODS\SOM02.2-EPA-BG121415.M
 Quant Title : SVOA CALIBRATION

TIC Library : C:\DATABASE\NIST02.L
 TIC Integration Parameters: LSCINT.P

 Peak Number 16 Dibenzofuran, 4-methyl- Concentration Rank 3

R.T.	EstConc	Area	Relative to ISTD	R.T.
16.07	22.71 ng/ul	1452470	Acenaphthene-d10	14.73

Hit#	of	Tentative ID	MW	MolForm	CAS#	Qual
1	5	Dibenzofuran, 4-methyl-	182	C13H10O	007320-53-8	91
2		[1,1'-Biphenyl]-4-carboxaldehyde	182	C13H10O	003218-36-8	78
3		9H-Fluoren-9-ol	182	C13H10O	001689-64-1	78
4		2,4,6-Cycloheptatrien-1-one, 2-p...	182	C13H10O	014562-09-5	78
5		[1,1'-Biphenyl]-4-carboxaldehyde	182	C13H10O	003218-36-8	64



Data Path : Z:\HPCHEM1\BNA_G\DATA\BG121715\
 Data File : BG020237.D
 Acq On : 17 Dec 2015 1:28
 Operator : UM/SJ
 Sample : G4767-12
 Misc :
 ALS Vial : 23 Sample Multiplier: 1

Instrument :
 BNA_G
 ClientSampleID :
 D9N34

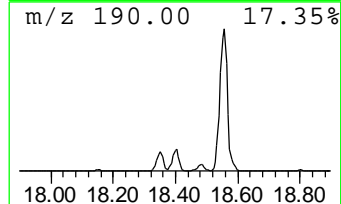
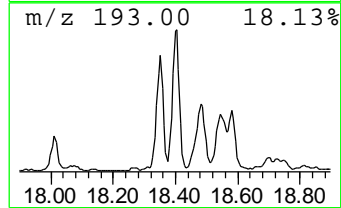
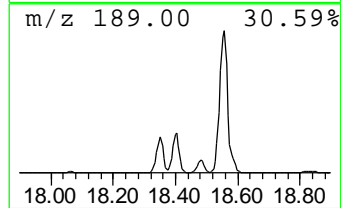
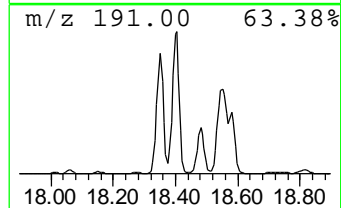
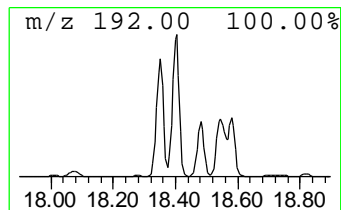
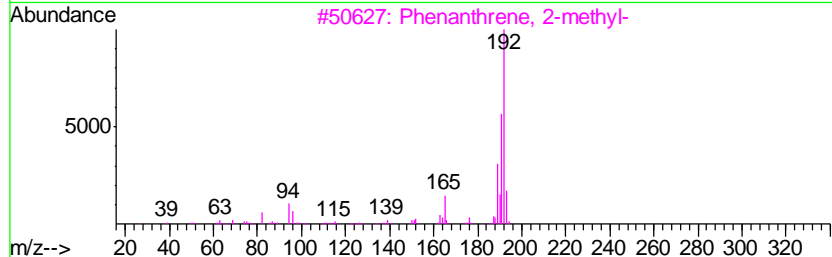
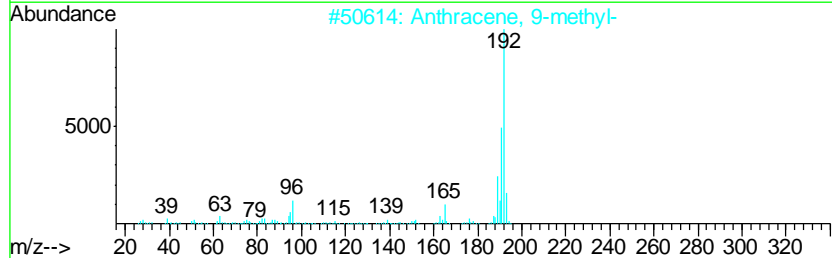
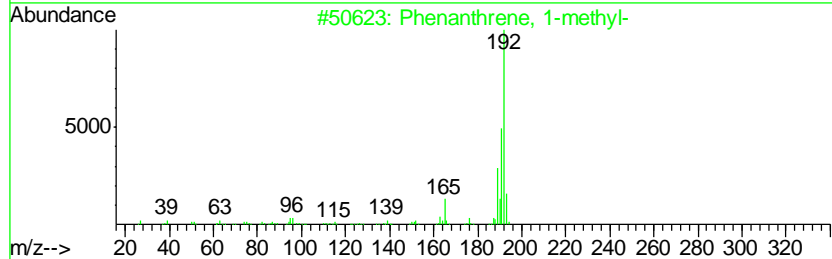
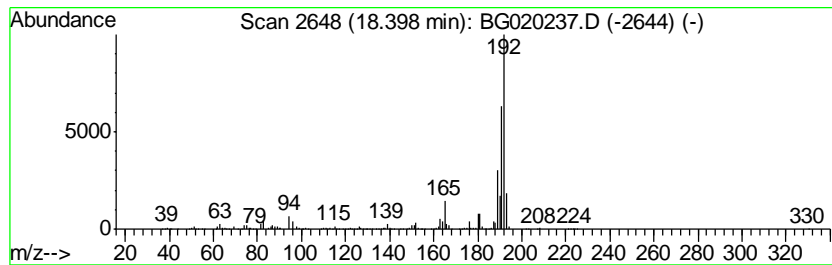
Quant Method : Z:\HPCHEM1\BNA_G\METHODS\SOM02.2-EPA-BG121415.M
 Quant Title : SVOA CALIBRATION

TIC Library : C:\DATABASE\NIST02.L
 TIC Integration Parameters: LSCINT.P

 Peak Number 17 Phenanthrene, 1-methyl- Concentration Rank 29

R.T.	EstConc	Area	Relative to ISTD	R.T.
18.40	2.26 ng/ul	2372760	Phenanthrene-d10	17.48

Hit#	of	Tentative ID	MW	MolForm	CAS#	Qual
1	5	Phenanthrene, 1-methyl-	192	C15H12	000832-69-9	97
2		Anthracene, 9-methyl-	192	C15H12	000779-02-2	96
3		Phenanthrene, 2-methyl-	192	C15H12	002531-84-2	95
4		Phenanthrene, 2-methyl-	192	C15H12	002531-84-2	95
5		Anthracene, 2-methyl-	192	C15H12	000613-12-7	94



Data Path : Z:\HPCHEM1\BNA_G\DATA\BG121715\
 Data File : BG020237.D
 Acq On : 17 Dec 2015 1:28
 Operator : UM/SJ
 Sample : G4767-12
 Misc :
 ALS Vial : 23 Sample Multiplier: 1

Instrument :
 BNA_G
 ClientSampled :
 D9N34

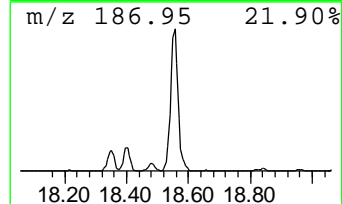
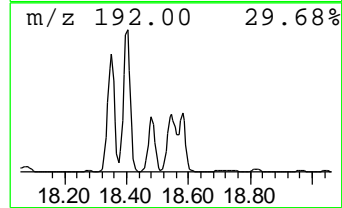
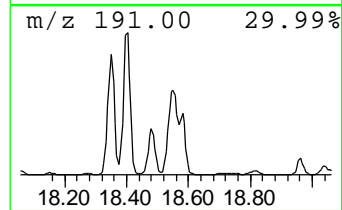
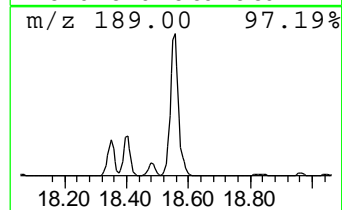
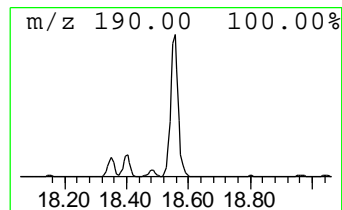
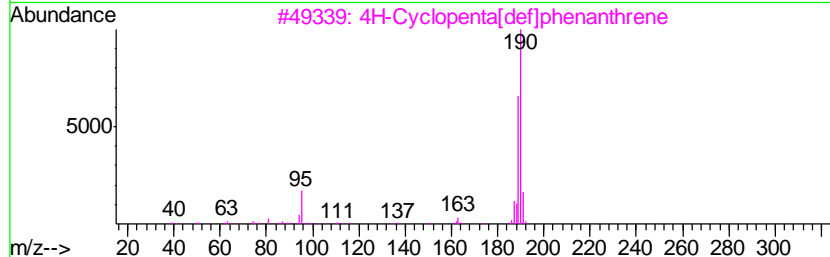
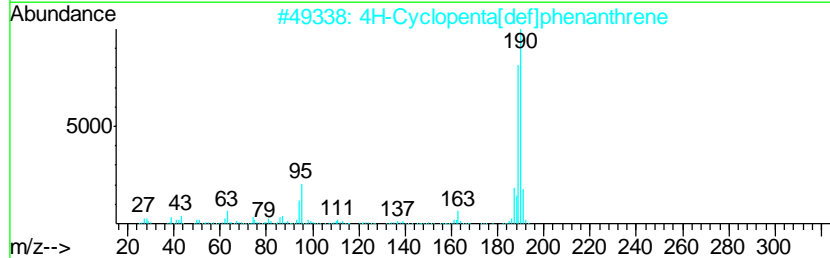
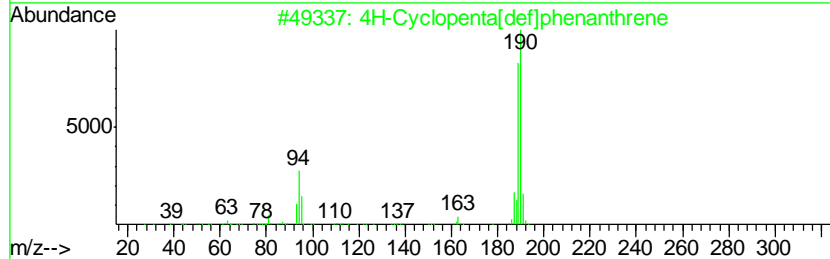
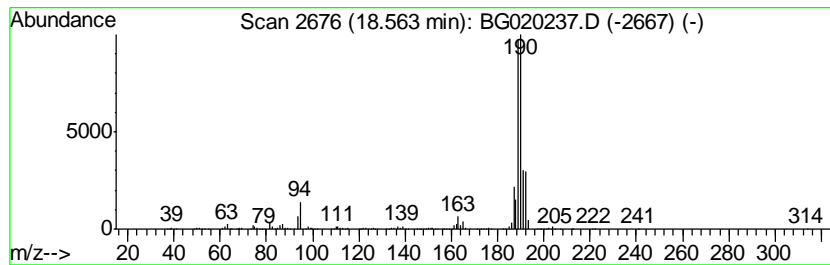
Quant Method : Z:\HPCHEM1\BNA_G\METHODS\SOM02.2-EPA-BG121415.M
 Quant Title : SVOA CALIBRATION

TIC Library : C:\DATABASE\NIST02.L
 TIC Integration Parameters: LSCINT.P

 Peak Number 18 4H-Cyclopenta[def]phenanthrene Concentration Rank 21

R.T.	EstConc	Area	Relative to ISTD	R.T.
18.56	4.06 ng/ul	4261750	Phenanthrene-d10	17.48

Hit#	of	Tentative ID	MW	MolForm	CAS#	Qual
1	5	4H-Cyclopenta[def]phenanthrene	190	C15H10	000203-64-5	83
2		4H-Cyclopenta[def]phenanthrene	190	C15H10	000203-64-5	76
3		4H-Cyclopenta[def]phenanthrene	190	C15H10	000203-64-5	72
4		6H-Cyclobuta[jk]phenanthrene	190	C15H10	083469-43-6	64
5		Thiophene-3-carboxaldehyde, 5-ch...	190	C5H4BClO3S	036155-87-0	52



Data Path : Z:\HPCHEM1\BNA_G\DATA\BG121715\
 Data File : BG020237.D
 Acq On : 17 Dec 2015 1:28
 Operator : UM/SJ
 Sample : G4767-12
 Misc :
 ALS Vial : 23 Sample Multiplier: 1

Instrument :
 BNA_G
 ClientSampled :
 D9N34

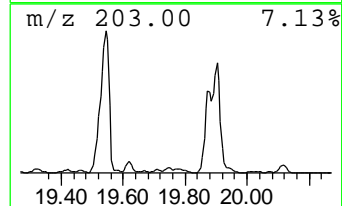
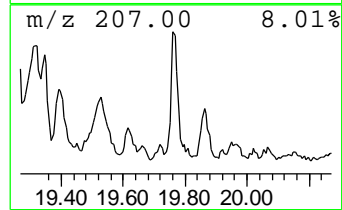
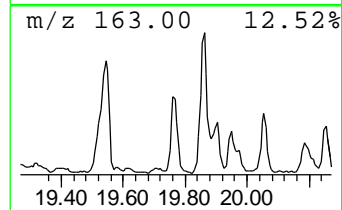
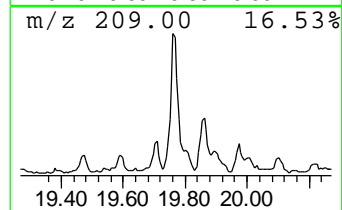
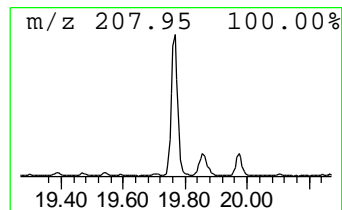
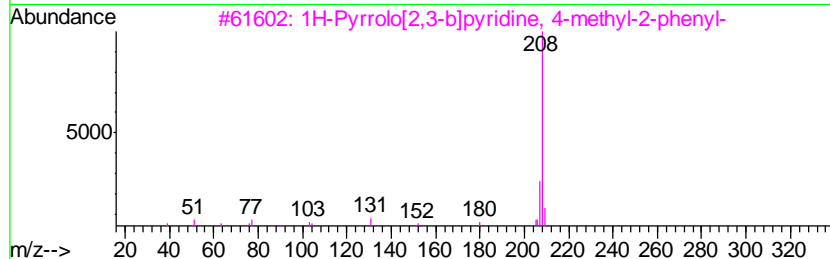
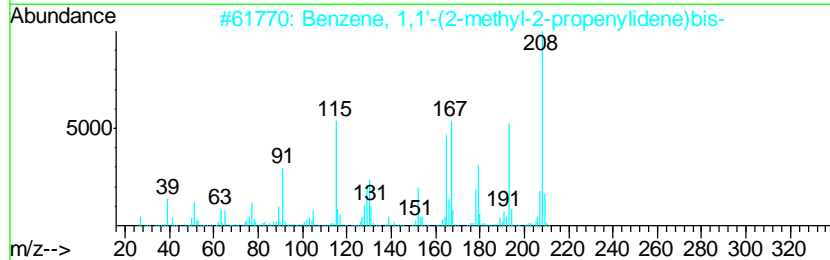
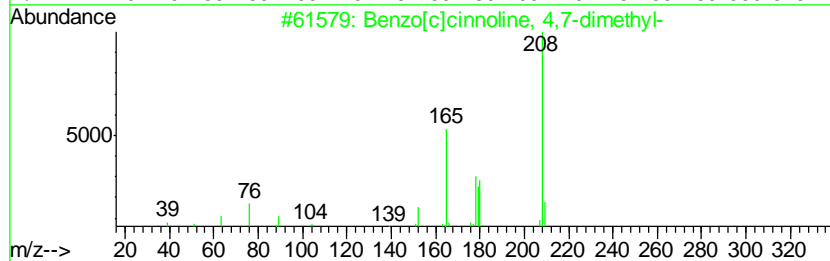
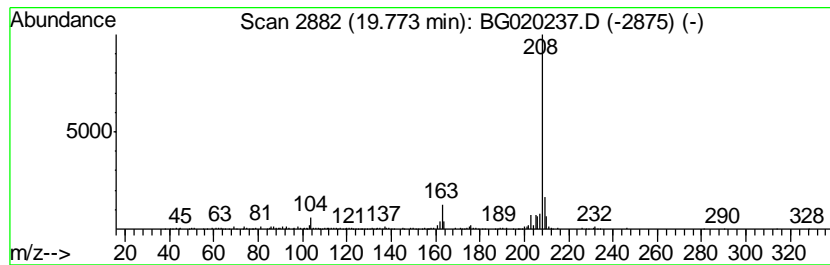
Quant Method : Z:\HPCHEM1\BNA_G\METHODS\SOM02.2-EPA-BG121415.M
 Quant Title : SVOA CALIBRATION

TIC Library : C:\DATABASE\NIST02.L
 TIC Integration Parameters: LSCINT.P

 Peak Number 19 Benzo[c]cinnoline, 4,7-dime... Concentration Rank 28

R.T.	EstConc	Area	Relative to ISTD	R.T.
19.77	2.35 ng/ul	389215	Chrysene-d12	21.75

Hit#	of	Tentative ID	MW	MolForm	CAS#	Qual
1	5	Benzo[c]cinnoline, 4,7-dimethyl-	208	C14H12N2	020684-54-2	59
2		Benzene, 1,1'-(2-methyl-2-propen...	208	C16H16	070813-56-8	59
3		1H-Pyrrolo[2,3-b]pyridine, 4-met...	208	C14H12N2	023688-50-8	59
4		4,7-Dimethyl-1,10-phenanthroline	208	C14H12N2	003248-05-3	59
5		5-Ethyl-2-formylpyridine thiosem...	208	C9H12N4S	031181-48-3	53



Data Path : Z:\HPCHEM1\BNA_G\DATA\BG121715\
 Data File : BG020237.D
 Acq On : 17 Dec 2015 1:28
 Operator : UM/SJ
 Sample : G4767-12
 Misc :
 ALS Vial : 23 Sample Multiplier: 1

Instrument :
 BNA_G
 ClientSampleID :
 D9N34

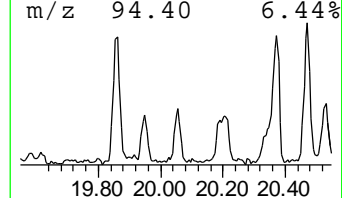
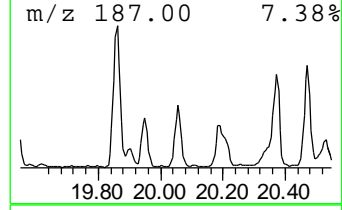
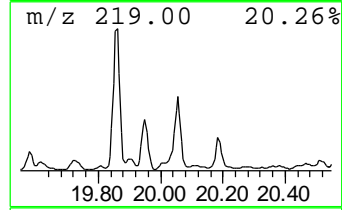
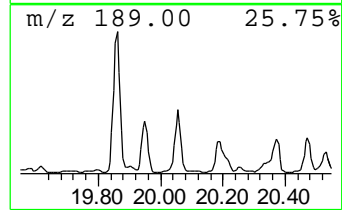
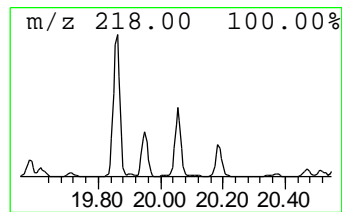
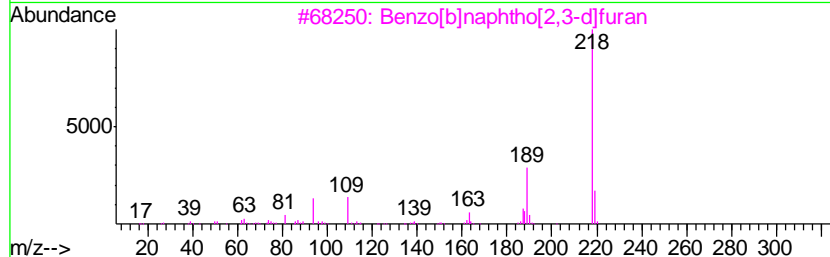
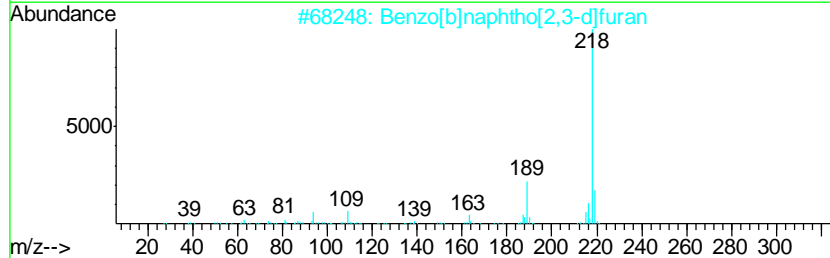
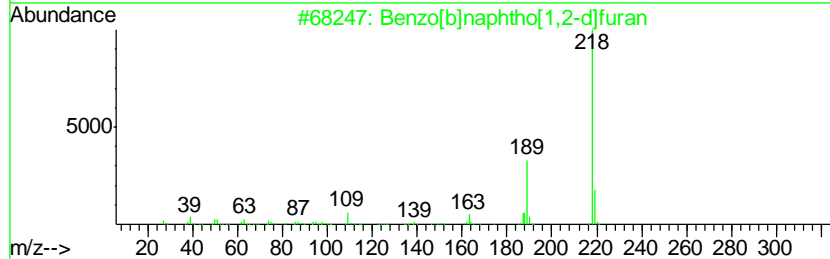
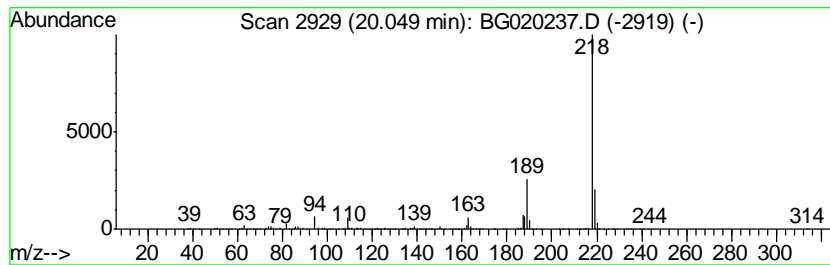
Quant Method : Z:\HPCHEM1\BNA_G\METHODS\SOM02.2-EPA-BG121415.M
 Quant Title : SVOA CALIBRATION

TIC Library : C:\DATABASE\NIST02.L
 TIC Integration Parameters: LSCINT.P

 Peak Number 20 Benzo[b]naphtho[1,2-d]furan Concentration Rank 22

R.T.	EstConc	Area	Relative to ISTD	R.T.
20.05	3.92 ng/ul	650525	Chrysene-d12	21.75

Hit#	of	Tentative ID	MW	MolForm	CAS#	Qual
1	5	Benzo[b]naphtho[1,2-d]furan	218	C16H10O	000239-30-5	97
2		Benzo[b]naphtho[2,3-d]furan	218	C16H10O	000243-42-5	94
3		Benzo[b]naphtho[2,3-d]furan	218	C16H10O	000243-42-5	94
4		Indeno[2,1-b]chromene,	218	C16H10O	000243-24-3	91
5		Benzo[b]naphtho[2,3-d]furan	218	C16H10O	000243-42-5	91



Data Path : Z:\HPCHEM1\BNA_G\DATA\BG121715\
 Data File : BG020237.D
 Acq On : 17 Dec 2015 1:28
 Operator : UM/SJ
 Sample : G4767-12
 Misc :
 ALS Vial : 23 Sample Multiplier: 1

Instrument :
 BNA_G
 ClientSampled :
 D9N34

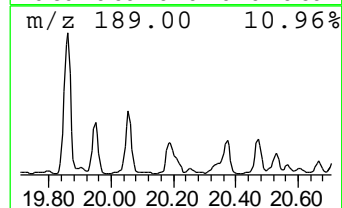
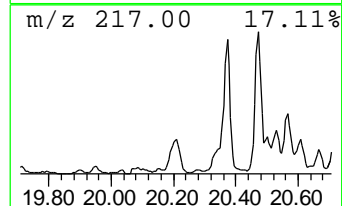
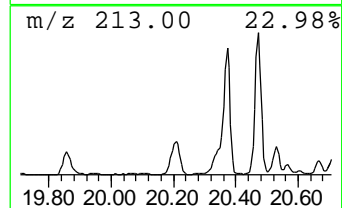
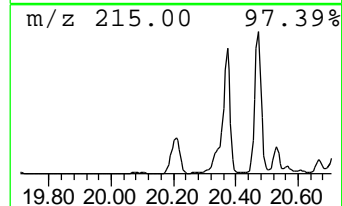
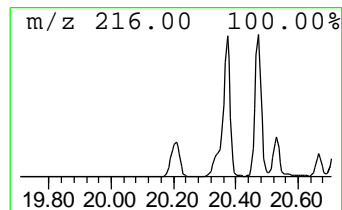
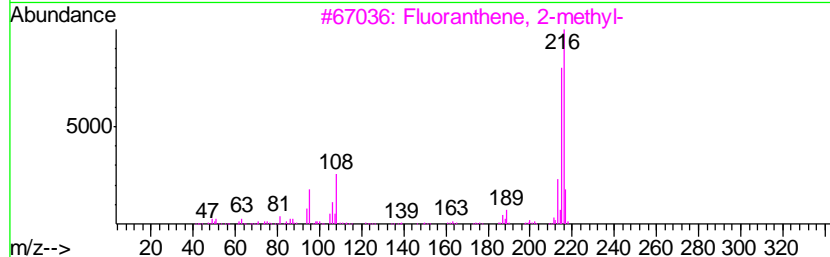
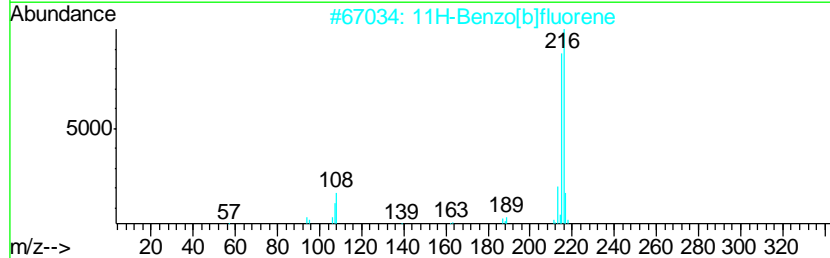
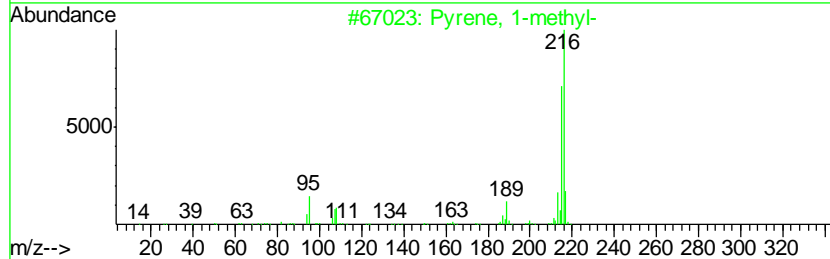
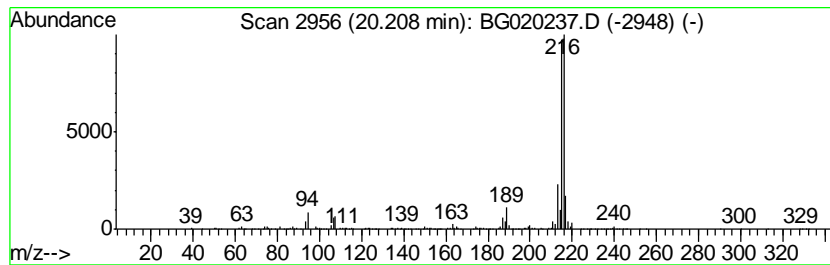
Quant Method : Z:\HPCHEM1\BNA_G\METHODS\SOM02.2-EPA-BG121415.M
 Quant Title : SVOA CALIBRATION

TIC Library : C:\DATABASE\NIST02.L
 TIC Integration Parameters: LSCINT.P

 Peak Number 21 Pyrene, 1-methyl- Concentration Rank 16

R.T.	EstConc	Area	Relative to ISTD	R.T.
20.21	5.76 ng/ul	954697	Chrysene-d12	21.75

Hit#	of	Tentative ID	MW	MolForm	CAS#	Qual
1	5	Pyrene, 1-methyl-	216	C17H12	002381-21-7	95
2		11H-Benzo[b]fluorene	216	C17H12	000243-17-4	91
3		Fluoranthene, 2-methyl-	216	C17H12	033543-31-6	91
4		Pyrene, 1-methyl-	216	C17H12	002381-21-7	89
5		11H-Benzo[a]fluorene	216	C17H12	000238-84-6	87



Data Path : Z:\HPCHEM1\BNA_G\DATA\BG121715\
 Data File : BG020237.D
 Acq On : 17 Dec 2015 1:28
 Operator : UM/SJ
 Sample : G4767-12
 Misc :
 ALS Vial : 23 Sample Multiplier: 1

Instrument :
 BNA_G
 ClientSampled :
 D9N34

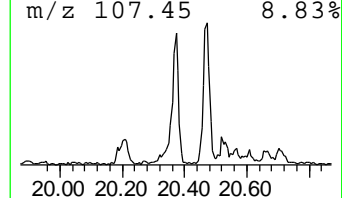
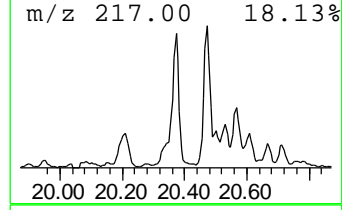
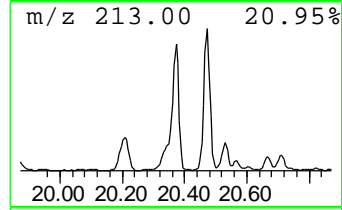
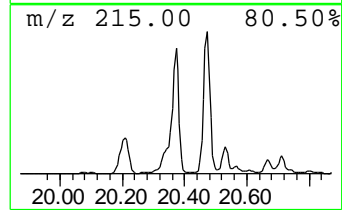
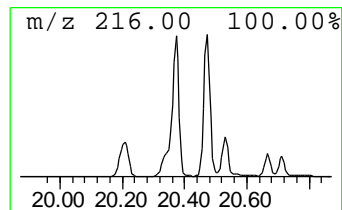
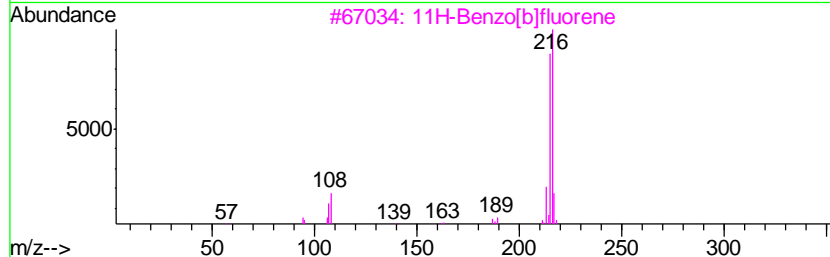
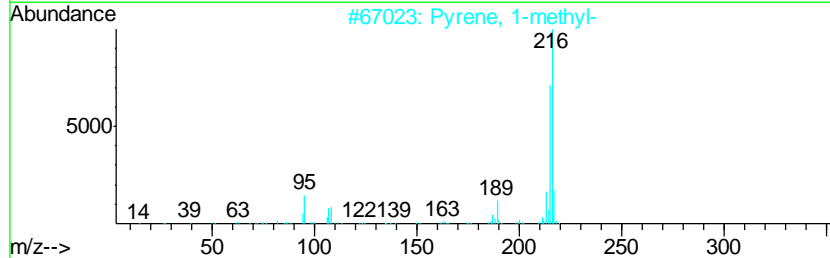
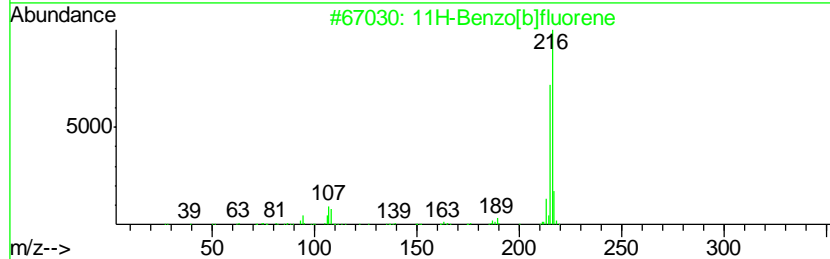
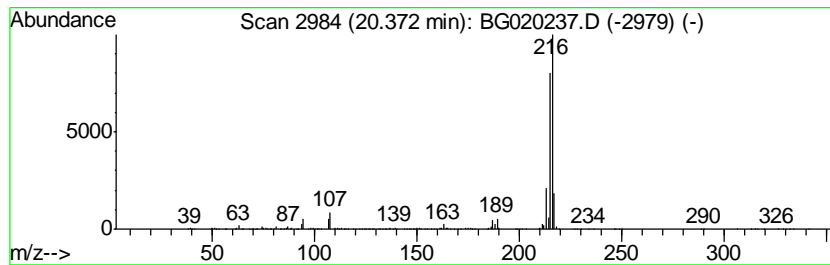
Quant Method : Z:\HPCHEM1\BNA_G\METHODS\SOM02.2-EPA-BG121415.M
 Quant Title : SVOA CALIBRATION

TIC Library : C:\DATABASE\NIST02.L
 TIC Integration Parameters: LSCINT.P

 Peak Number 23 11H-Benzo[b]fluorene Concentration Rank 12

R.T.	EstConc	Area	Relative to ISTD	R.T.
20.37	10.56 ng/ul	1750290	Chrysene-d12	21.75

Hit#	of	Tentative ID	MW	MolForm	CAS#	Qual
1	5	11H-Benzo[b]fluorene	216	C17H12	000243-17-4	94
2		Pyrene, 1-methyl-	216	C17H12	002381-21-7	93
3		11H-Benzo[b]fluorene	216	C17H12	000243-17-4	93
4		11H-Benzo[a]fluorene	216	C17H12	000238-84-6	91
5		Pyrene, 2-methyl-	216	C17H12	003442-78-2	91



Data Path : Z:\HPCHEM1\BNA_G\DATA\BG121715\
 Data File : BG020237.D
 Acq On : 17 Dec 2015 1:28
 Operator : UM/SJ
 Sample : G4767-12
 Misc :
 ALS Vial : 23 Sample Multiplier: 1

Instrument :
 BNA_G
 ClientSampleID :
 D9N34

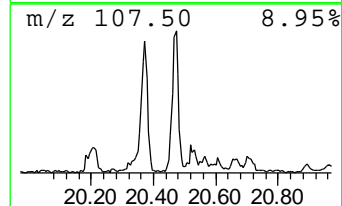
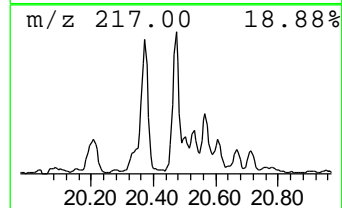
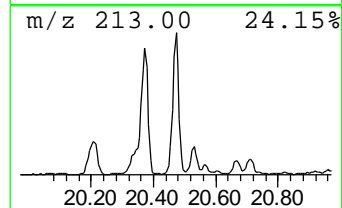
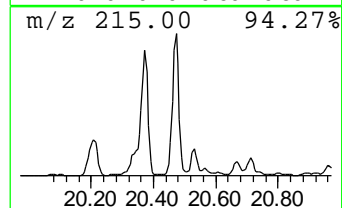
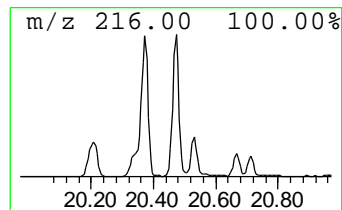
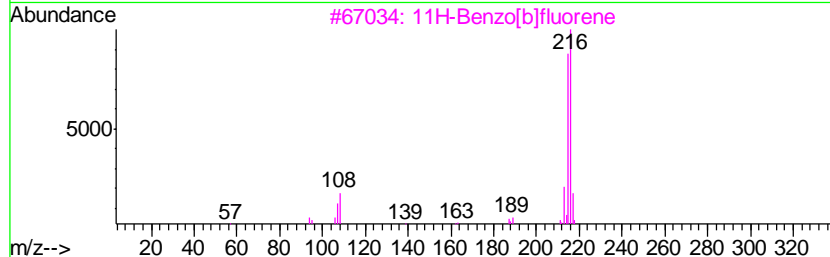
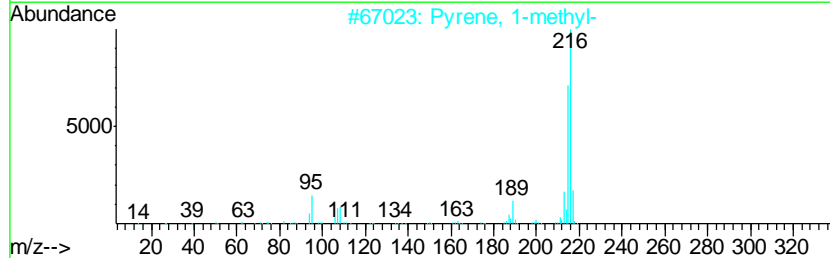
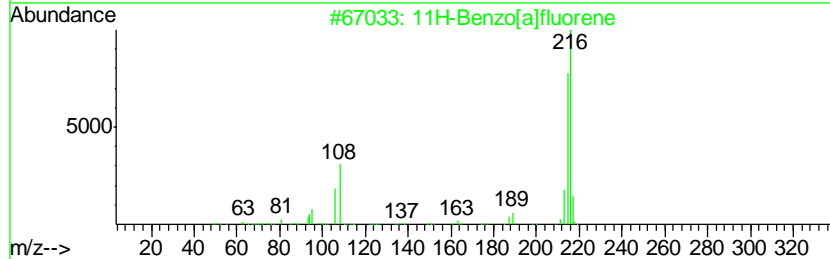
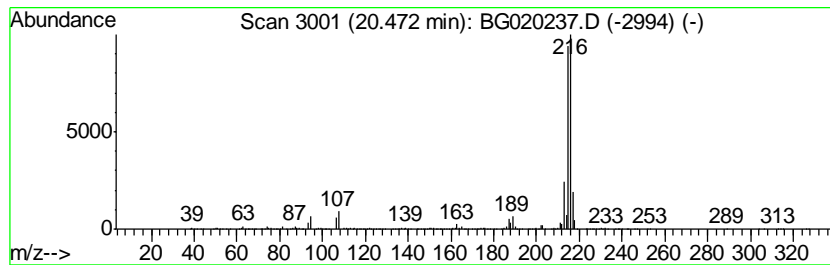
Quant Method : Z:\HPCHEM1\BNA_G\METHODS\SOM02.2-EPA-BG121415.M
 Quant Title : SVOA CALIBRATION

TIC Library : C:\DATABASE\NIST02.L
 TIC Integration Parameters: LSCINT.P

 Peak Number 24 11H-Benzo[a]fluorene Concentration Rank 8

R.T.	EstConc	Area	Relative to ISTD	R.T.
20.47	11.99 ng/ul	1988430	Chrysene-d12	21.75

Hit#	of	Tentative ID	MW	MolForm	CAS#	Qual
1	5	11H-Benzo[a]fluorene	216	C17H12	000238-84-6	94
2		Pyrene, 1-methyl-	216	C17H12	002381-21-7	94
3		11H-Benzo[b]fluorene	216	C17H12	000243-17-4	93
4		Fluoranthene, 2-methyl-	216	C17H12	033543-31-6	93
5		11H-Benzo[b]fluorene	216	C17H12	000243-17-4	90



Data Path : Z:\HPCHEM1\BNA_G\DATA\BG121715\
 Data File : BG020237.D
 Acq On : 17 Dec 2015 1:28
 Operator : UM/SJ
 Sample : G4767-12
 Misc :
 ALS Vial : 23 Sample Multiplier: 1

Instrument :
 BNA_G
 ClientSampleID :
 D9N34

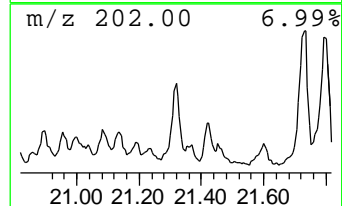
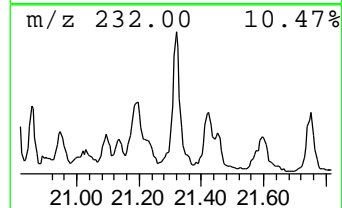
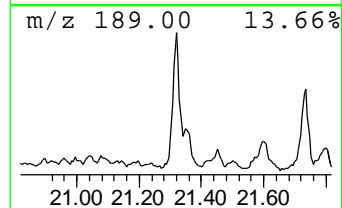
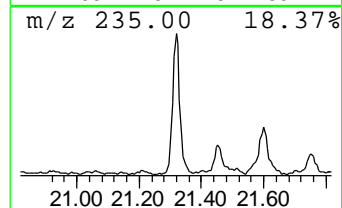
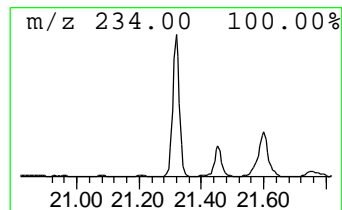
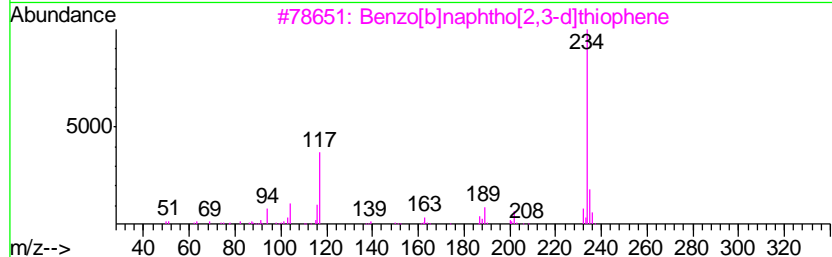
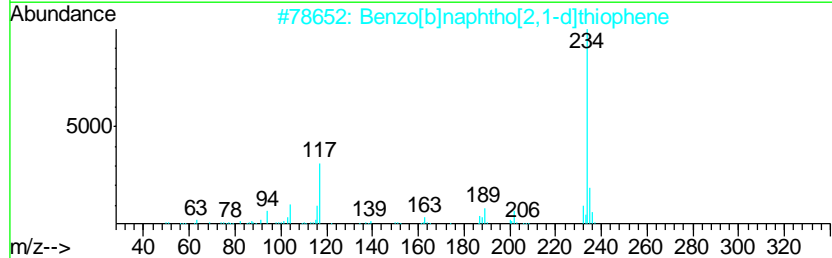
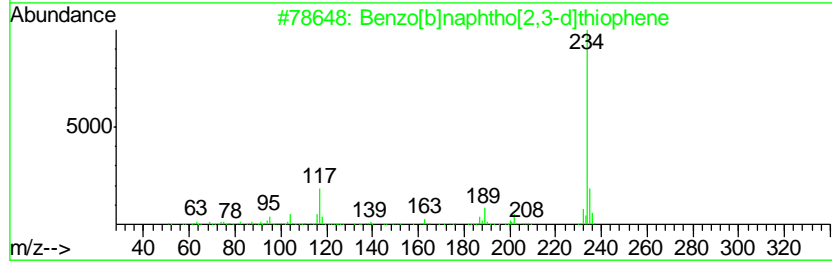
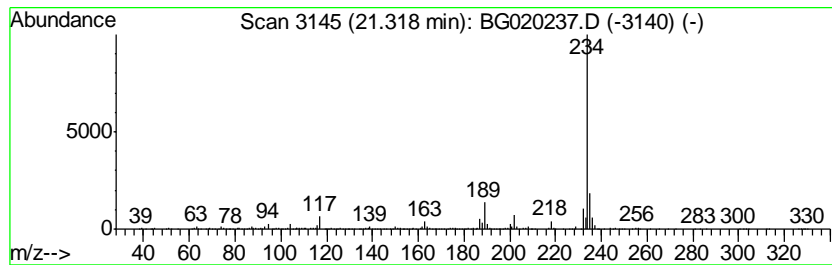
Quant Method : Z:\HPCHEM1\BNA_G\METHODS\SOM02.2-EPA-BG121415.M
 Quant Title : SVOA CALIBRATION

TIC Library : C:\DATABASE\NIST02.L
 TIC Integration Parameters: LSCINT.P

 Peak Number 26 Benzo[b]naphtho[2,3-d]thiop... Concentration Rank 26

R.T.	EstConc	Area	Relative to ISTD	R.T.
21.32	2.88 ng/ul	477088	Chrysene-d12	21.75

Hit#	of	Tentative ID	MW	MolForm	CAS#	Qual
1	5	Benzo[b]naphtho[2,3-d]thiophene	234	C16H10S	000243-46-9	93
2		Benzo[b]naphtho[2,1-d]thiophene	234	C16H10S	000239-35-0	93
3		Benzo[b]naphtho[2,3-d]thiophene	234	C16H10S	000243-46-9	93
4		Benzo[b]naphtho[1,2-d]thiophene	234	C16H10S	000205-43-6	91
5		Benzo[b]naphtho[2,1-d]thiophene	234	C16H10S	000239-35-0	91



Data Path : Z:\HPCHEM1\BNA_G\DATA\BG121715\
 Data File : BG020237.D
 Acq On : 17 Dec 2015 1:28
 Operator : UM/SJ
 Sample : G4767-12
 Misc :
 ALS Vial : 23 Sample Multiplier: 1

Instrument :
 BNA_G
 ClientSampleID :
 D9N34

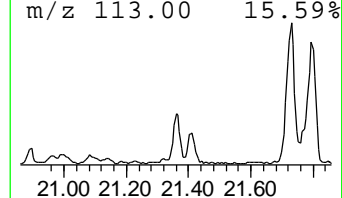
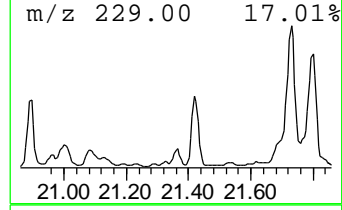
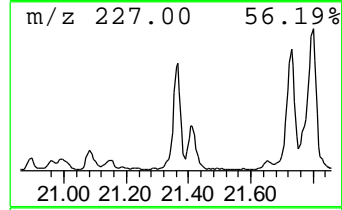
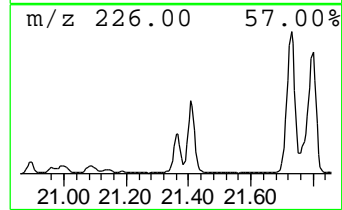
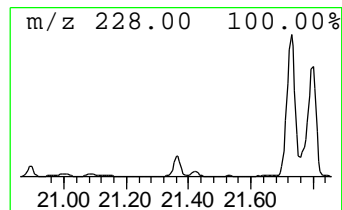
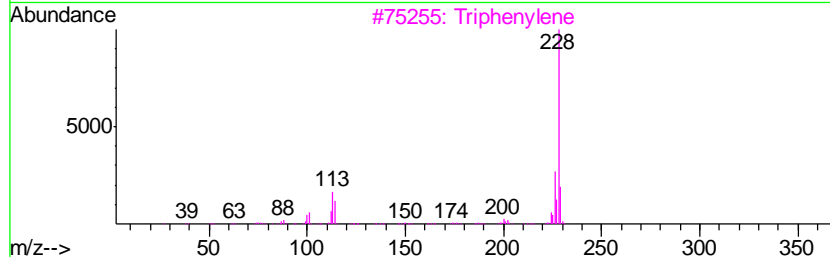
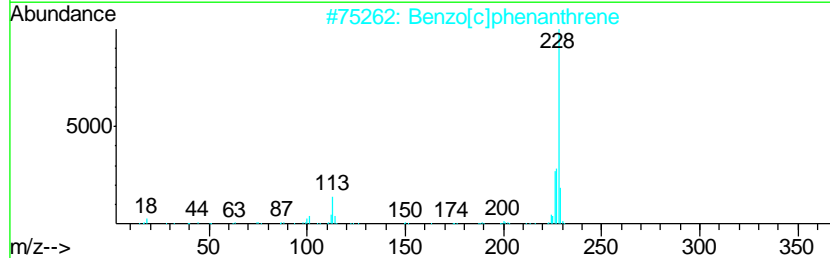
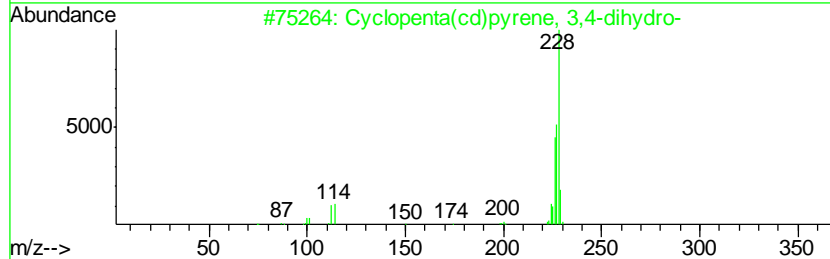
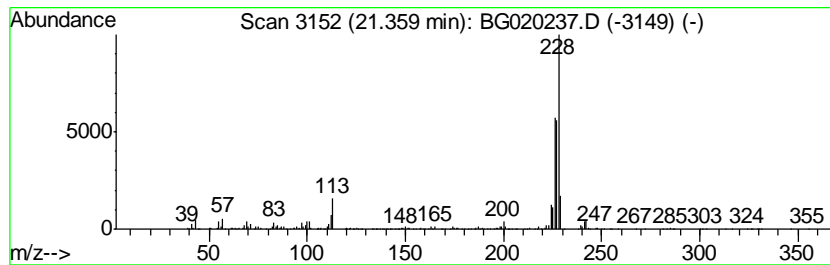
Quant Method : Z:\HPCHEM1\BNA_G\METHODS\SOM02.2-EPA-BG121415.M
 Quant Title : SVOA CALIBRATION

TIC Library : C:\DATABASE\NIST02.L
 TIC Integration Parameters: LSCINT.P

 Peak Number 27 Cyclopenta(cd)pyrene, 3,4-d... Concentration Rank 24

R.T.	EstConc	Area	Relative to ISTD	R.T.
21.36	3.12 ng/ul	516786	Chrysene-d12	21.75

Hit#	of	Tentative ID	MW	MolForm	CAS#	Qual
1	5	Cyclopenta(cd)pyrene, 3,4-dihydro-	228	C18H12	025732-74-5	91
2		Benzo[c]phenanthrene	228	C18H12	000195-19-7	52
3		Triphenylene	228	C18H12	000217-59-4	50
4		Triphenylene	228	C18H12	000217-59-4	49
5		2-Nitrophenyl selenocyanate	228	C7H4N2O2Se	051694-22-5	47



Data Path : Z:\HPCHEM1\BNA_G\DATA\BG121715\
 Data File : BG020237.D
 Acq On : 17 Dec 2015 1:28
 Operator : UM/SJ
 Sample : G4767-12
 Misc :
 ALS Vial : 23 Sample Multiplier: 1

Instrument :
 BNA_G
 ClientSampled :
 D9N34

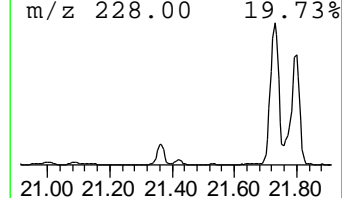
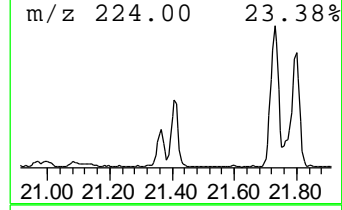
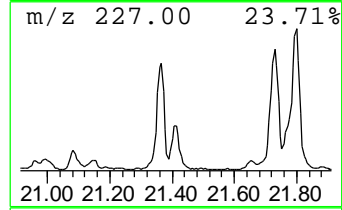
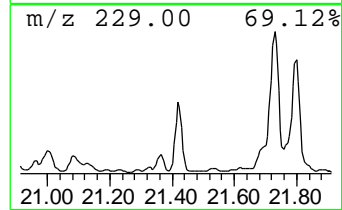
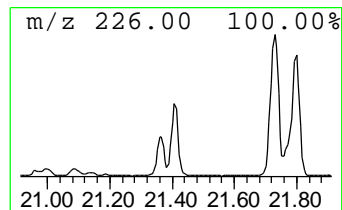
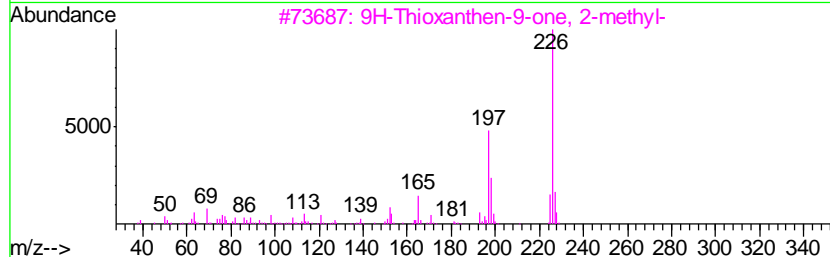
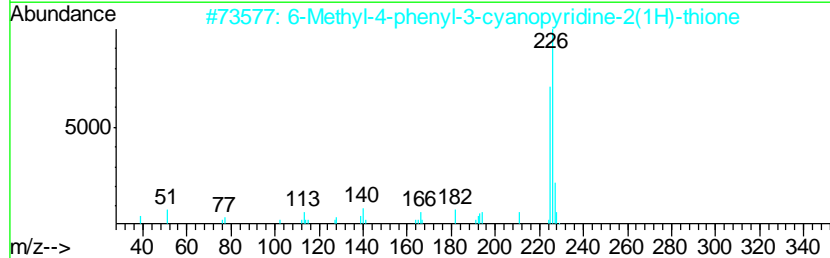
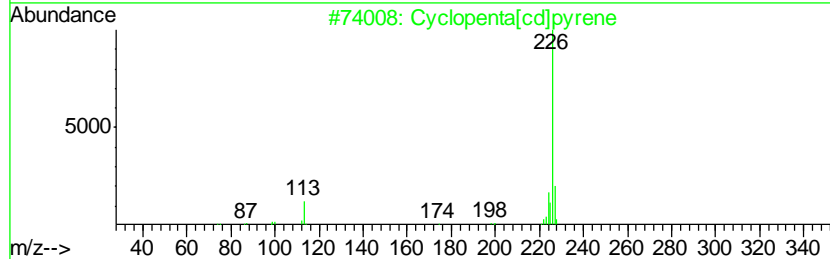
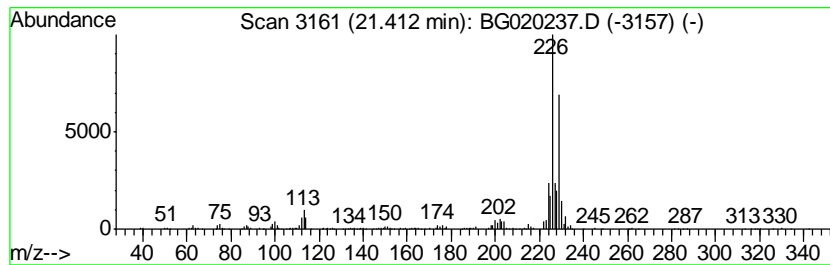
Quant Method : Z:\HPCHEM1\BNA_G\METHODS\SOM02.2-EPA-BG121415.M
 Quant Title : SVOA CALIBRATION

TIC Library : C:\DATABASE\NIST02.L
 TIC Integration Parameters: LSCINT.P

 Peak Number 28 unknown-01 Concentration Rank 27

R.T.	EstConc	Area	Relative to ISTD	R.T.
21.41	2.78 ng/ul	461145	Chrysene-d12	21.75

Hit#	of	Tentative ID	MW	MolForm	CAS#	Qual
1	5	Cyclopenta[cd]pyrene	226	C18H10	027208-37-3	49
2		6-Methyl-4-phenyl-3-cyanopyridin...	226	C13H10N2S	078564-23-5	43
3		9H-Thioxanthen-9-one, 2-methyl-	226	C14H10OS	015774-82-0	43
4		Benzene, [4-(3-ethynylphenyl)-1,...	226	C18H10	1000115-87-3	38
5		N,N-Dimethylindoaniline	226	C14H14N2O	002150-58-5	37



Data Path : Z:\HPCHEM1\BNA_G\DATA\BG121715\
 Data File : BG020237.D
 Acq On : 17 Dec 2015 1:28
 Operator : UM/SJ
 Sample : G4767-12
 Misc :
 ALS Vial : 23 Sample Multiplier: 1

Instrument :
 BNA_G
 ClientSampleId :
 D9N34

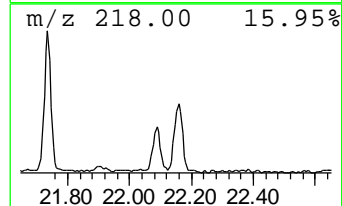
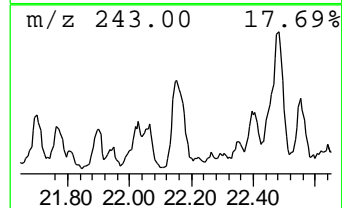
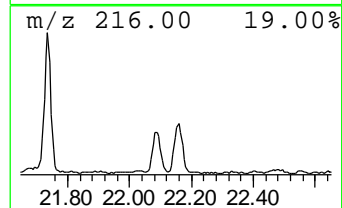
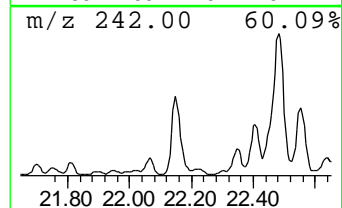
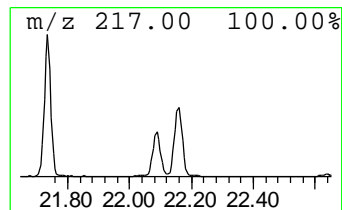
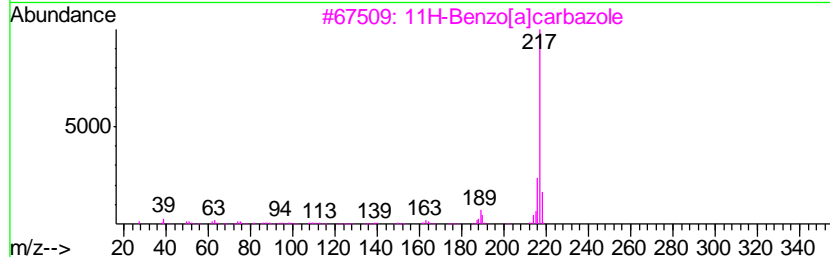
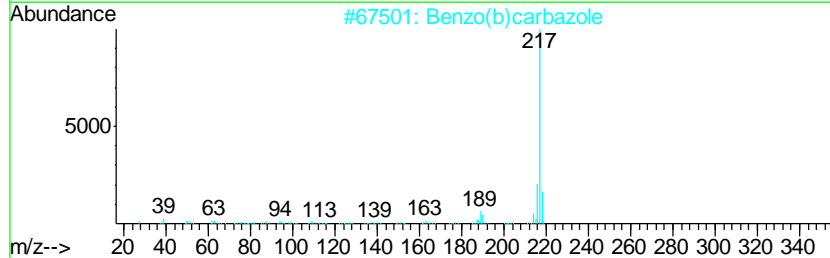
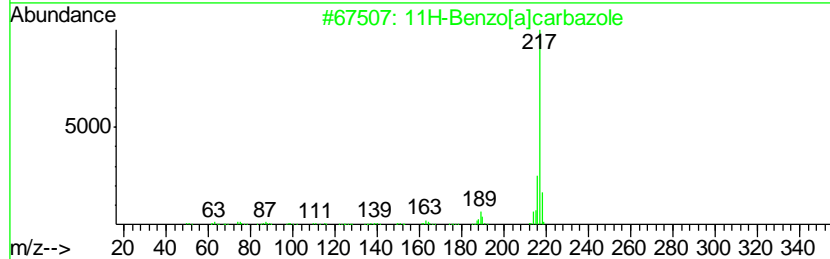
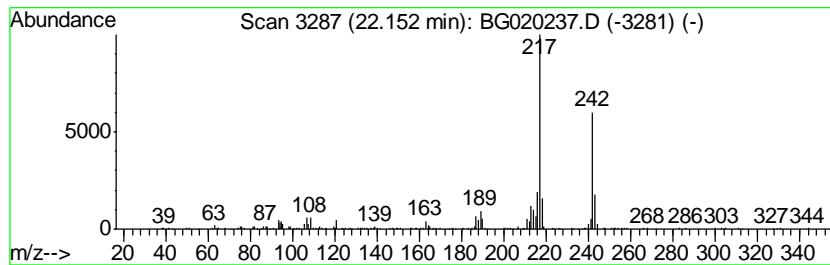
Quant Method : Z:\HPCHEM1\BNA_G\METHODS\SOM02.2-EPA-BG121415.M
 Quant Title : SVOA CALIBRATION

TIC Library : C:\DATABASE\NIST02.L
 TIC Integration Parameters: LSCINT.P

 Peak Number 30 11H-Benzo[a]carbazole Concentration Rank 31

R.T.	EstConc	Area	Relative to ISTD	R.T.
22.15	2.02 ng/ul	335671	Chrysene-d12	21.75

Hit#	of	Tentative ID	MW	MolForm	CAS#	Qual
1	5	11H-Benzo[a]carbazole	217	C16H11N	000239-01-0	91
2		Benzo(b)carbazole	217	C16H11N	000243-28-7	64
3		11H-Benzo[a]carbazole	217	C16H11N	000239-01-0	60
4		7H-Benzo[c]carbazole	217	C16H11N	000205-25-4	52
5		Benzo(b)carbazole	217	C16H11N	000243-28-7	49



Data Path : Z:\HPCHEM1\BNA_G\DATA\BG121715\
 Data File : BG020237.D
 Acq On : 17 Dec 2015 1:28
 Operator : UM/SJ
 Sample : G4767-12
 Misc :
 ALS Vial : 23 Sample Multiplier: 1

Instrument :
 BNA_G
 ClientSampleId :
 D9N34

Quant Method : Z:\HPCHEM1\BNA_G\METHODS\SOM02.2-EPA-BG121415.M
 Quant Title : SVOA CALIBRATION

TIC Library : C:\DATABASE\NIST02.L
 TIC Integration Parameters: LSCINT.P

TIC Top Hit name	RT	EstConc	Units	Response	--Internal Standard--			
					#	RT	Resp	Conc
Butane, 2-methoxy...	3.20	19.5	ng/ul	261757	1	8.10	268287	20.0
Indene	8.64	20.0	ng/ul	268287	1	8.10	268287	20.0
Naphthalene, 1-et...	13.76	15.7	ng/ul	1003300	3	14.73	1279280	20.0
Naphthalene, 1,3-...	13.90	19.2	ng/ul	1226000	3	14.73	1279280	20.0
Naphthalene, 2,3-...	14.06	29.4	ng/ul	1881260	3	14.73	1279280	20.0
1-Isopropenylnaph...	15.04	8.5	ng/ul	545036	3	14.73	1279280	20.0
Naphthalene, 2,3,...	15.20	6.2	ng/ul	398091	3	14.73	1279280	20.0
Naphthalene, 1,6,...	15.39	5.3	ng/ul	340621	3	14.73	1279280	20.0
(DEL) Alkane: Str...	15.55	3.3	ng/ul	211892	3	14.73	1279280	20.0
Diphenylmethane	15.94	22.9	ng/ul	1466680	3	14.73	1279280	20.0
Nordiphenamid	16.02	10.9	ng/ul	699727	3	14.73	1279280	20.0
Dibenzofuran, 4-m...	16.07	22.7	ng/ul	1452470	3	14.73	1279280	20.0
Phenanthrene, 1-m...	18.40	2.3	ng/ul	2372760	4	17.48	20986600	20.0
4H-Cyclopenta[def...	18.56	4.1	ng/ul	4261750	4	17.48	20986600	20.0
Benzo[c]cinnoline...	19.77	2.4	ng/ul	389215	5	21.75	3316460	20.0
Benzo[b]naphtho[1...	20.05	3.9	ng/ul	650525	5	21.75	3316460	20.0
Pyrene, 1-methyl-	20.21	5.8	ng/ul	954697	5	21.75	3316460	20.0
11H-Benzo[b]fluorene	20.37	10.6	ng/ul	1750290	5	21.75	3316460	20.0
11H-Benzo[a]fluorene	20.47	12.0	ng/ul	1988430	5	21.75	3316460	20.0
Benzo[b]naphtho[2...	21.32	2.9	ng/ul	477088	5	21.75	3316460	20.0
Cyclopenta(cd)pyr...	21.36	3.1	ng/ul	516786	5	21.75	3316460	20.0
unknown-01	21.41	2.8	ng/ul	461145	5	21.75	3316460	20.0
11H-Benzo[a]carba...	22.15	2.0	ng/ul	335671	5	21.75	3316460	20.0