

m/z	Abundance
40.00	447.0
42.20	153.0
44.10	1776.0
48.10	222.0
49.00	547.0
55.00	409.0
56.20	442.0
57.30	160.0
67.20	208.0
69.10	258.0
71.20	154.0
73.10	1071.0
73.80	363.0
77.00	628.0
82.10	151.0
84.00	252.0
85.30	305.0
89.80	354.0
91.00	151.0
95.10	484.0
97.10	209.0
101.90	168.0
103.10	155.0
105.10	166.0
106.20	247.0
112.10	230.0
114.90	168.0
125.00	274.0
128.10	236.0
134.80	247.0
147.10	503.0
149.00	321.0
151.30	165.0
152.10	503.0
155.00	207.0
155.80	190.0
159.00	284.0
163.30	345.0
172.10	282.0
186.00	244.0
187.20	167.0
191.00	177.0
193.10	239.0
197.30	153.0
198.70	160.0
207.10	579.0
208.00	602.0
208.90	185.0
209.70	417.0
221.10	603.0
222.00	345.0
222.90	187.0
231.20	314.0
245.20	411.0
266.00	152.0
266.60	181.0
271.90	178.0
276.10	190.0
279.10	454.0
281.10	952.0
361.30	216.0
396.30	251.0
400.30	247.0
409.90	204.0
413.00	204.0
416.70	216.0
458.10	322.0
464.20	235.0
477.70	231.0

Instrument :
BNA_G
ClientSampleId :
DFTPP21

m/z	Abundance
37.10	253.0
38.10	815.0
39.10	2234.0
40.20	358.0
41.00	448.0
42.10	161.0
44.00	2466.0
47.10	199.0
49.00	556.0
50.10	9800.0
51.10	35792.0
52.10	2105.0
55.10	580.0
56.10	1832.0
57.00	2823.0
59.10	170.0
61.10	622.0
62.00	355.0
63.10	1754.0
65.10	970.0
67.80	558.0
69.00	36584.0
69.90	210.0
73.20	732.0
74.10	3410.0
75.00	5953.0
76.20	2229.0
77.10	38464.0
78.10	2000.0
79.00	2256.0
80.00	3146.0
81.00	3875.0
82.10	1441.0
83.10	1151.0
83.90	329.0
84.70	497.0
85.20	297.0
85.90	834.0
87.00	1039.0
91.10	794.0
91.90	669.0
93.00	5799.0
94.10	353.0
95.00	321.0
98.00	4303.0
99.00	1840.0
99.70	218.0
101.00	2018.0
102.90	1133.0
104.00	1082.0
105.10	1218.0
107.00	11269.0
108.00	1735.0
109.00	226.0
110.00	18792.0
111.00	2825.0
112.00	354.0
115.90	986.0
117.00	11101.0
117.90	494.0
119.00	354.0
120.00	425.0
122.00	1186.0
123.00	1206.0
123.90	418.0
125.10	420.0
127.00	34536.0
128.10	2664.0
129.00	14374.0
130.00	963.0
132.10	200.0
134.00	611.0
135.10	1349.0
136.00	626.0
137.10	708.0
137.90	358.0
141.00	2038.0
142.10	715.0
143.10	173.0
144.10	512.0
145.00	390.0
146.10	536.0
147.10	699.0
148.00	3325.0
149.10	804.0
150.00	171.0
151.00	357.0
153.00	782.0
154.10	980.0
155.10	1577.0
156.00	2164.0
156.90	629.0

Instrument :
BNA_G
ClientSampleId :
DFTPP21

157.90	979.0
158.90	517.0
160.00	1075.0
161.00	987.0
161.90	916.0
165.00	923.0
165.90	798.0
167.10	3790.0
168.10	1958.0
169.10	427.0
169.90	331.0
170.80	289.0
172.00	691.0
173.00	360.0
174.10	861.0
175.10	2395.0
176.00	326.0
177.00	1597.0
177.90	174.0
179.00	2937.0
179.90	2165.0
181.00	1166.0
181.80	380.0
184.00	496.0
184.90	1023.0
186.00	12981.0
187.10	3897.0
188.00	276.0
189.00	1254.0
189.80	248.0
192.00	680.0
193.00	2192.0
193.80	340.0
195.20	305.0
196.00	1826.0
198.00	76904.0
199.00	5602.0
199.90	493.0
201.50	501.0
203.10	1245.0
204.00	3766.0
205.00	4953.0
206.00	27464.0
207.10	5067.0
207.90	828.0
209.00	788.0
210.00	269.0
210.80	761.0
212.00	226.0
214.10	302.0
215.30	242.0
216.00	750.0
217.00	7418.0
218.00	984.0
220.00	520.0
221.00	1698.0
221.90	1524.0
223.00	1730.0
224.00	12606.0
225.00	3141.0
226.00	350.0
227.00	7134.0
228.00	1660.0
229.00	2387.0
231.00	682.0
232.00	261.0
234.30	224.0
234.80	412.0
235.90	539.0
237.00	985.0
238.20	178.0
238.90	308.0
241.10	512.0
242.00	927.0
243.00	991.0
244.00	8172.0
245.10	1303.0
246.00	2171.0
246.80	352.0
247.20	152.0
247.70	162.0
249.00	548.0
250.00	232.0
252.00	363.0
253.10	151.0
255.00	53000.0
256.00	10308.0
257.10	746.0
258.00	4918.0
258.90	466.0
260.90	164.0
263.10	236.0
265.00	1906.0
267.00	361.0
270.10	239.0
271.70	311.0

Instrument :
BNA_G
ClientSampleId :
DFTPP21

273.00	1463.0
274.00	5178.0
275.00	22648.0
276.00	3039.0
276.90	2028.0
278.10	302.0
279.10	218.0
279.90	165.0
281.00	490.0
281.80	326.0
283.00	614.0
284.20	484.0
285.00	530.0
292.90	954.0
294.90	257.0
296.00	7725.0
296.90	562.0
302.00	341.0
303.10	852.0
304.10	179.0
313.00	547.0
314.10	427.0
315.00	1034.0
316.00	484.0
320.30	278.0
321.10	315.0
322.10	206.0
323.00	1230.0
324.10	637.0
326.90	357.0
328.00	437.0
332.10	369.0
332.90	152.0
334.10	644.0
335.10	205.0
341.00	168.0
345.90	527.0
347.10	323.0
352.00	501.0
353.00	617.0
354.10	718.0
355.10	329.0
359.00	167.0
365.00	3263.0
365.90	331.0
366.20	360.0
370.00	227.0
371.10	193.0
372.00	1254.0
373.20	329.0
373.80	150.0
382.60	154.0
390.70	350.0
392.10	215.0
401.00	183.0
402.00	1028.0
402.90	887.0
404.00	358.0
420.60	309.0
421.10	307.0
422.00	595.0
423.00	3888.0
423.80	781.0
427.60	272.0
428.20	262.0
439.30	202.0
441.00	8992.0
442.00	52400.0
443.00	12160.0
444.00	708.0
445.40	216.0
531.60	184.0
532.40	188.0

Instrument :
BNA_G
ClientSampleId :
DFTPP21

m/z	Abundance
35.30	247.0
37.00	238.0
38.00	686.0
39.10	4135.0
40.00	569.0
41.10	389.0
42.10	176.0
44.10	2048.0
44.90	293.0
49.00	1229.0
50.10	14450.0
51.10	54944.0
52.10	2764.0
53.00	348.0
53.90	216.0
55.20	236.0
56.00	1792.0
57.00	4574.0
57.90	325.0
61.10	920.0
62.00	531.0
63.10	2263.0
63.90	195.0
64.30	184.0
65.00	825.0
66.90	333.0
69.00	54832.0
70.00	269.0
71.90	169.0
73.00	730.0
74.10	4714.0
75.10	7534.0
76.00	4021.0
77.10	55480.0
78.10	3639.0
79.10	4078.0
80.00	2572.0
81.00	4895.0
82.10	901.0
83.00	679.0
84.00	352.0
85.10	916.0
86.00	1503.0
87.00	556.0
87.90	447.0
89.00	209.0
91.10	878.0
92.10	1397.0
93.00	6588.0
93.90	357.0
95.10	441.0
95.90	318.0
98.00	5495.0
99.00	3935.0
99.90	540.0
101.10	3713.0
103.00	622.0
104.10	1949.0
105.00	2107.0
107.10	21504.0
108.00	4117.0
109.20	1076.0
110.00	28632.0
111.00	4010.0
111.90	759.0
116.00	1277.0
117.10	18296.0
118.00	914.0
118.90	451.0
120.10	571.0
121.20	201.0
122.00	848.0
123.00	1487.0
124.10	1136.0
124.90	628.0
127.00	56840.0
128.00	4327.0
129.00	26784.0
130.10	1845.0
131.10	1034.0
133.00	645.0
134.10	737.0
135.00	2555.0
136.10	943.0
137.00	1323.0
138.00	277.0
140.10	433.0
141.00	3452.0
142.10	1071.0
143.00	1053.0
146.20	641.0
147.00	1507.0

Instrument :
BNA_G
ClientSampleId :
DFTPP21

148.00	4474.0
148.90	736.0
150.00	482.0
151.00	947.0
151.50	676.0
151.90	441.0
152.90	799.0
154.00	657.0
155.00	2558.0
156.10	3993.0
157.20	599.0
157.70	589.0
158.90	521.0
159.90	1330.0
161.00	2106.0
161.80	295.0
162.70	203.0
163.80	157.0
165.00	1412.0
166.00	1170.0
167.00	5244.0
168.00	2152.0
168.90	310.0
169.90	383.0
171.00	418.0
172.00	832.0
172.90	962.0
174.00	976.0
175.00	3208.0
176.20	763.0
176.90	1596.0
177.70	624.0
179.00	5451.0
180.10	2859.0
181.00	1671.0
182.00	162.0
183.80	367.0
185.00	3239.0
186.00	23072.0
187.00	5961.0
188.00	288.0
189.10	1597.0
190.10	416.0
191.00	994.0
191.90	2490.0
193.00	1911.0
194.00	654.0
196.10	3748.0
198.00	133184.0
199.00	8330.0
200.00	1308.0
201.10	815.0
202.90	1798.0
204.00	5600.0
205.00	9881.0
206.00	39720.0
207.00	4415.0
208.00	1938.0
208.90	443.0
210.00	1132.0
211.10	1498.0
211.80	276.0
213.00	265.0
214.10	176.0
215.00	613.0
216.10	1136.0
217.00	12583.0
218.00	1279.0
219.10	224.0
219.60	307.0
221.00	5163.0
221.60	1619.0
223.00	3300.0
224.00	25016.0
225.10	6137.0
226.10	610.0
227.00	11539.0
227.90	1279.0
229.10	2271.0
229.80	505.0
231.00	1387.0
232.00	265.0
232.60	312.0
233.10	383.0
233.90	557.0
235.00	1029.0
236.00	911.0
236.90	798.0
237.10	802.0
238.90	380.0
239.70	271.0
240.00	200.0
241.00	743.0
242.00	1379.0
244.00	14348.0
245.00	1638.0

Instrument :
BNA_G
ClientSampleId :
DFTPP21

245.90	2911.0
247.10	955.0
248.60	431.0
248.90	605.0
250.00	337.0
251.80	210.0
252.30	333.0
252.90	322.0
255.00	91968.0
256.00	16488.0
256.90	940.0
258.00	6515.0
259.00	1507.0
260.10	153.0
265.00	2499.0
266.10	380.0
266.70	331.0
269.20	201.0
270.10	301.0
271.90	196.0
273.00	3088.0
274.00	7916.0
275.00	41472.0
276.00	4368.0
277.00	3728.0
277.80	940.0
278.90	315.0
281.10	431.0
281.80	213.0
282.20	230.0
282.90	435.0
285.00	713.0
288.80	360.0
289.80	216.0
292.10	228.0
293.10	1541.0
293.80	155.0
296.00	10690.0
297.00	2116.0
299.70	394.0
300.90	241.0
301.90	332.0
302.90	1287.0
304.00	402.0
307.80	471.0
309.10	229.0
309.90	205.0
313.00	308.0
313.90	726.0
314.90	1028.0
316.00	832.0
318.20	157.0
320.00	220.0
320.90	340.0
322.10	605.0
322.90	3686.0
324.00	685.0
326.10	241.0
326.90	1026.0
328.00	722.0
331.90	371.0
333.00	492.0
334.00	3585.0
335.00	673.0
341.00	1140.0
342.00	182.0
346.00	1613.0
349.90	312.0
351.20	223.0
351.90	1772.0
353.00	733.0
354.00	1618.0
355.10	570.0
365.00	5645.0
365.70	702.0
372.10	1809.0
373.00	382.0
374.00	250.0
376.40	254.0
383.00	667.0
384.10	365.0
390.10	219.0
390.90	337.0
398.00	245.0
400.90	173.0
402.00	675.0
403.00	1240.0
404.10	521.0
406.60	180.0
409.90	198.0
412.10	246.0
414.60	154.0
421.20	807.0
421.90	860.0
423.00	7007.0
424.00	1660.0

Instrument :
BNA_G
ClientSampleId :
DFTPP21

431.00	428.0
433.60	247.0
436.10	260.0
441.00	17720.0
442.00	106464.0
443.00	20200.0
444.00	1667.0
457.00	442.0
476.40	164.0
520.80	177.0

Instrument :
BNA_G
ClientSampleId :
DFTPP21

m/z	Abundance
38.10	603.0
39.10	4401.0
40.10	543.0
41.10	321.0
42.00	174.0
43.30	365.0
44.00	1037.0
44.90	315.0
48.90	451.0
50.10	10567.0
51.10	46184.0
52.10	2542.0
55.10	250.0
56.10	1626.0
57.00	3715.0
57.90	194.0
61.00	758.0
62.20	886.0
63.00	2536.0
64.00	154.0
65.10	883.0
67.10	205.0
69.00	45504.0
70.90	215.0
73.10	816.0
74.10	6428.0
75.00	7346.0
76.10	2946.0
77.10	47896.0
78.00	2874.0
79.10	3738.0
80.00	3350.0
81.00	3902.0
82.00	718.0
83.10	1086.0
85.00	504.0
86.10	1070.0
87.00	484.0
89.10	384.0
91.10	765.0
91.90	1561.0
93.10	5114.0
93.90	657.0
95.00	304.0
95.80	304.0
98.00	4885.0
99.00	3400.0
100.00	293.0
101.00	2405.0
102.00	332.0
103.10	768.0
104.00	1929.0
105.00	1372.0
107.00	15298.0
108.00	2246.0
109.00	1084.0
110.00	25864.0
111.10	3591.0
112.00	348.0
113.00	288.0
114.40	173.0
117.00	15005.0
118.00	1493.0
119.00	374.0
119.80	166.0
122.10	1369.0
123.10	1238.0
123.80	727.0
124.20	475.0
125.10	965.0
127.00	52728.0
128.00	3063.0
129.00	19824.0
130.00	1103.0
130.90	281.0
131.30	296.0
132.80	160.0
134.00	674.0
135.00	1645.0
135.90	757.0
137.10	851.0
138.10	624.0
141.00	2065.0
142.00	1204.0
143.00	1201.0
143.90	193.0
146.10	383.0
147.00	1925.0
148.00	4100.0
149.10	1159.0
150.00	161.0
150.70	243.0

Instrument :
BNA_G
ClientSampleId :
DFTPP21

153.00	1662.0
153.90	380.0
155.00	1073.0
156.10	1690.0
157.00	620.0
158.00	666.0
158.90	808.0
160.00	771.0
161.00	1734.0
161.90	360.0
164.90	741.0
166.00	1082.0
167.00	5746.0
168.00	2534.0
169.10	881.0
170.00	318.0
171.00	697.0
172.00	903.0
173.10	845.0
174.10	1357.0
175.00	2599.0
176.00	779.0
177.00	1307.0
178.10	625.0
179.00	6028.0
180.00	3278.0
181.00	1671.0
181.90	340.0
183.00	283.0
184.20	808.0
185.00	2506.0
186.10	18080.0
187.10	4235.0
188.00	490.0
189.10	1304.0
190.20	264.0
190.90	892.0
192.00	2777.0
193.00	1841.0
193.80	457.0
195.10	288.0
196.10	3592.0
196.80	1662.0
198.00	123608.0
198.90	6928.0
200.00	1179.0
201.00	460.0
201.80	762.0
203.10	919.0
204.00	6524.0
205.00	9736.0
206.00	40856.0
207.00	6070.0
208.00	1686.0
209.10	645.0
210.20	1080.0
211.00	1506.0
212.70	220.0
213.20	185.0
215.10	535.0
215.90	1539.0
217.00	11438.0
218.00	1738.0
219.80	318.0
221.00	4227.0
222.20	1121.0
223.00	2282.0
224.00	23160.0
225.00	4519.0
226.00	566.0
227.00	12270.0
228.00	1777.0
229.10	2548.0
230.00	724.0
230.90	975.0
231.80	345.0
233.10	312.0
233.80	911.0
234.80	408.0
236.00	543.0
236.80	645.0
237.30	421.0
238.10	293.0
239.00	709.0
239.70	358.0
240.00	289.0
241.00	834.0
242.00	1485.0
243.10	1508.0
244.00	15590.0
245.00	2129.0
246.00	5130.0
246.80	715.0
249.10	804.0
250.00	176.0
250.80	282.0

Instrument :
BNA_G
ClientSampleId :
DFTPP21

251.90	345.0
252.90	540.0
255.00	94928.0
256.00	16408.0
257.00	1379.0
258.00	6376.0
259.00	1261.0
261.00	220.0
264.00	207.0
265.00	3041.0
266.00	692.0
267.00	220.0
269.70	198.0
270.90	215.0
271.30	232.0
272.00	583.0
273.00	2607.0
274.00	7414.0
275.00	36424.0
276.00	5024.0
277.00	4805.0
277.80	647.0
280.40	157.0
281.20	295.0
281.90	150.0
283.00	507.0
285.10	509.0
286.00	202.0
288.00	241.0
290.10	433.0
291.90	482.0
293.00	1265.0
294.20	543.0
295.00	359.0
296.00	16608.0
297.00	1910.0
301.00	166.0
302.00	341.0
303.00	1321.0
304.00	1186.0
308.10	254.0
309.00	573.0
309.90	409.0
314.10	672.0
315.10	1140.0
316.00	649.0
317.30	171.0
320.90	530.0
322.10	236.0
323.10	3848.0
324.10	676.0
325.10	363.0
326.80	814.0
328.10	517.0
331.00	213.0
331.90	279.0
333.10	346.0
334.10	3259.0
335.10	982.0
336.20	359.0
339.00	182.0
339.50	204.0
341.00	642.0
342.90	167.0
346.00	1028.0
346.90	450.0
350.00	387.0
351.00	184.0
352.10	1672.0
353.00	577.0
354.00	1031.0
354.70	228.0
355.90	251.0
358.20	164.0
362.70	167.0
365.00	7259.0
366.00	569.0
369.90	334.0
371.10	553.0
372.00	2460.0
373.00	796.0
374.00	314.0
382.90	451.0
383.80	210.0
391.10	295.0
391.90	418.0
401.00	272.0
401.90	808.0
402.90	636.0
403.90	284.0
405.70	232.0
413.30	168.0
421.10	1019.0
422.00	974.0
423.00	7047.0
424.00	1257.0

Instrument :
BNA_G
ClientSampleId :
DFTPP21

431.50	311.0
436.90	174.0
438.00	367.0
441.00	22752.0
442.00	131392.0
443.00	26264.0
444.10	2726.0
490.40	204.0
509.60	266.0
546.90	175.0

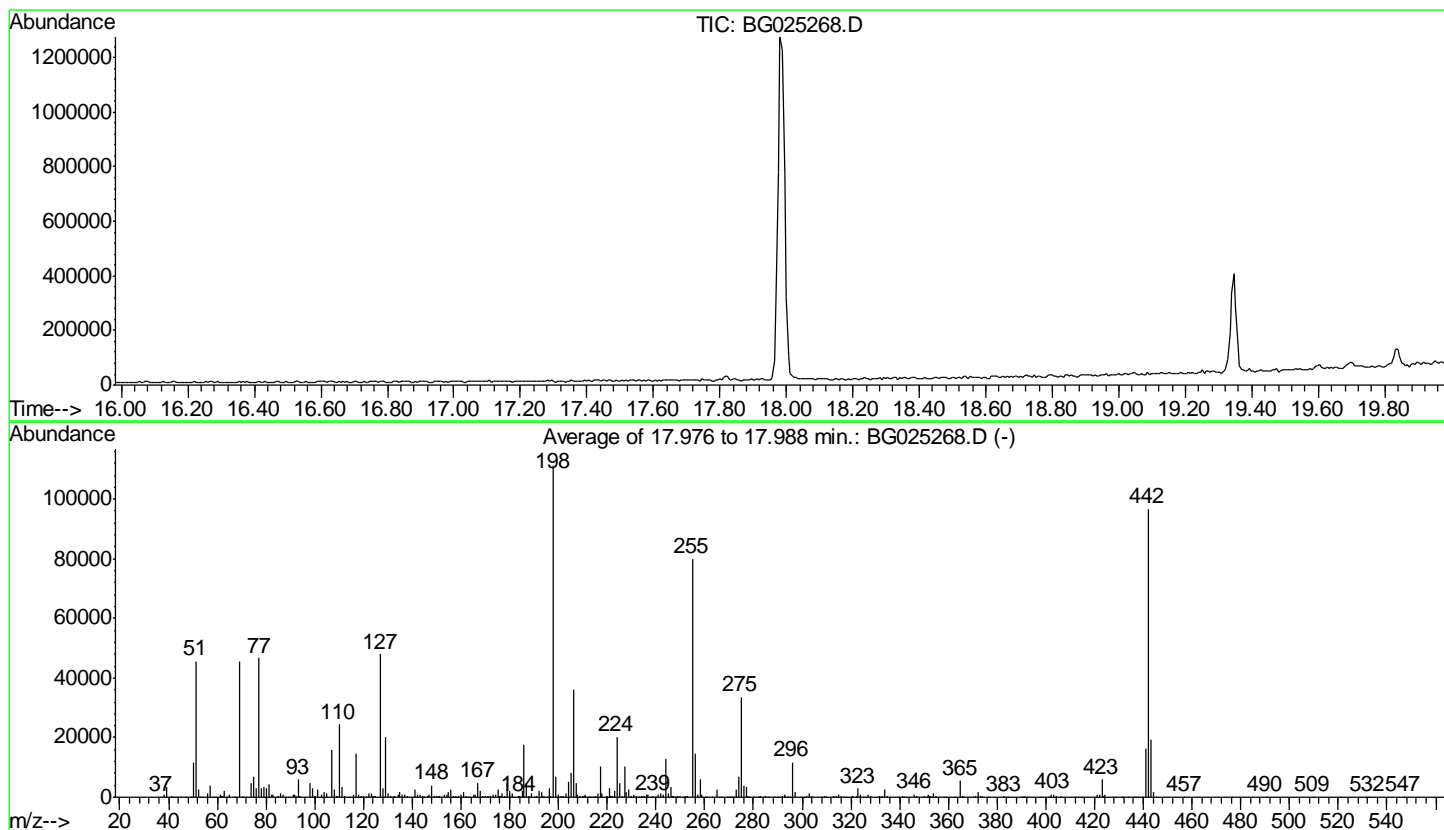
Instrument :
BNA_G
ClientSampleId :
DFTPP21

Data Path : Z:\HPCHEM1\BNA G\DATA\BG121716\
 Data File : BG025268.D
 Acq On : 17 Dec 2016 10:36
 Operator : UM/SJ
 Sample : DFTPP21
 Misc :
 ALS Vial : 1 Sample Multiplier: 1

Instrument :
 BNA_G
 ClientSampleId :
 DFTPP21

Integration File: LSCINT.P

Method : Z:\HPCHEM1\BNA_G\METHODS\SOM02.2-EPA-BG113016.M
 Title : SVOA CALIBRATION
 Last Update : Tue Dec 20 03:02:46 2016



AutoFind: Scans 2576, 2577, 2578; Background Corrected with Scan 2568

Target Mass	Rel. to Mass	Lower Limit%	Upper Limit%	Rel. Abn%	Raw Abn	Result Pass/Fail
51	198	10	80	41.0	45640	PASS
68	69	0.00	2	0.4	186	PASS
69	198	0.00	100	40.8	45382	PASS
70	69	0.00	2	0.4	159	PASS
127	198	10	80	43.2	48034	PASS
197	198	0.00	2	0.5	554	PASS
198	198	100	100	100.0	111232	PASS
199	198	5	9	6.3	6953	PASS
275	198	10	60	30.1	33514	PASS
365	198	1	100	4.8	5389	PASS
441	442	0.01	100	17.0	16488	PASS
442	198	50	100	87.0	96752	PASS
443	442	15	24	20.2	19541	PASS